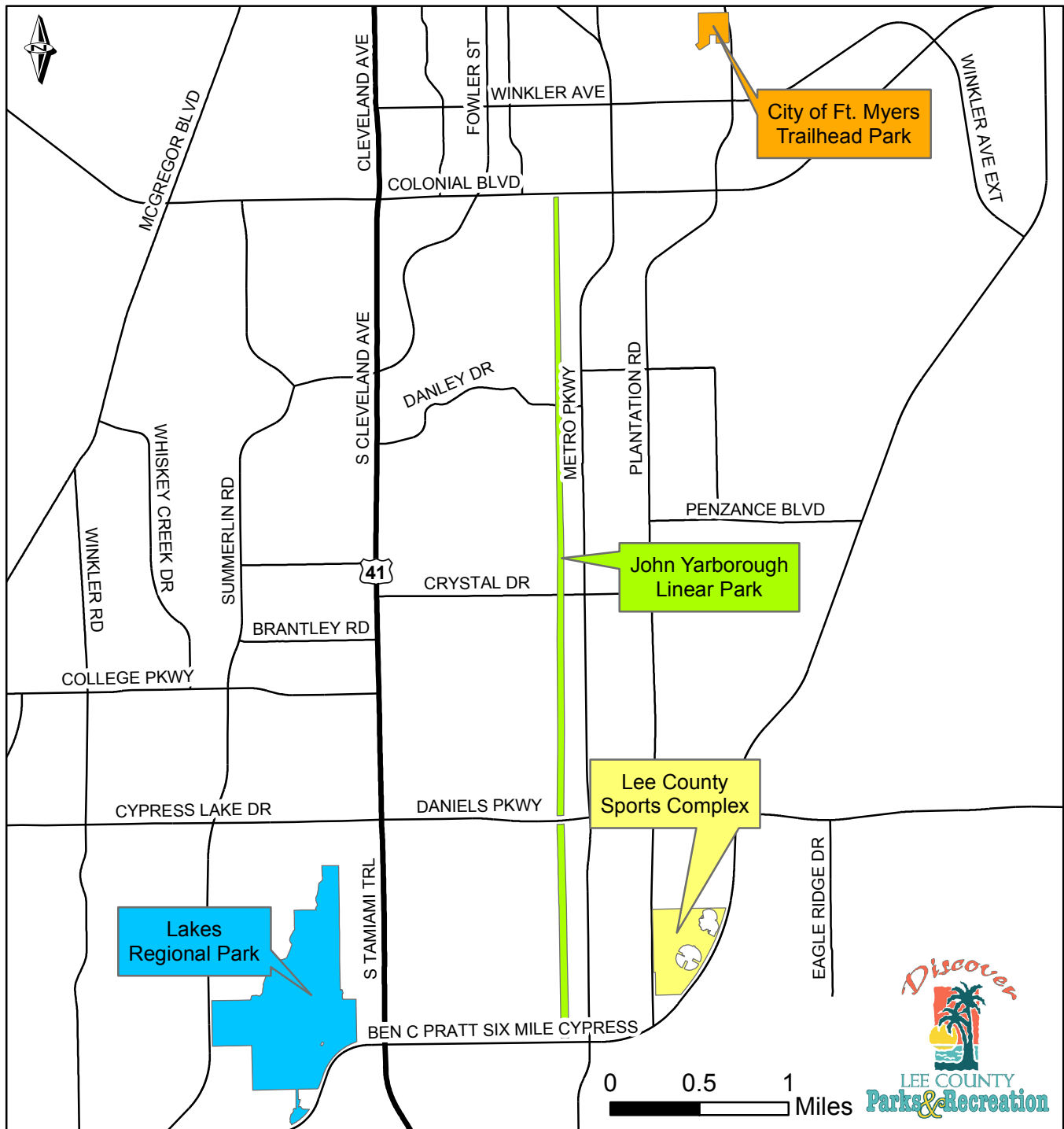


John Yarbrough Linear Park

This park is open from dawn to dusk - seven days a week

John Yarbrough Linear Park Trail is a six mile paved multiple-use north-to-south linear park trail that can be used for walking, hiking, jogging, rollerblading, bicycling, on-leash dog walking, fishing, birding, wildlife viewing, and picnicking.



The trail is well shaded on the southern-most section. The trail can be accessed by sidewalk or paths at: Six Mile Cypress Parkway, Daniels Parkway, Crystal Drive, and Colonial Boulevard.

Public parking is available at several nearby recreational facilities (parking fees may apply): Lakes Regional Park (1.5 mi.), the Lee County Sports Complex (1 mi.), and the City of Fort Myers Neighborhood Trailhead Park (2.1 mi.). John Yarbrough Linear Park is a dog friendly facility where dogs must remain on leash. At the current time there is no parking lot available.