

What is a Mitigation Park?

Environmental mitigation is an attempt to offset the detrimental impacts of development on a certain species or a type of native plant community. The Florida Fish and Wildlife Conservation Commission (FWC) implemented the Mitigation Park Program as an alternative to developers mitigating the impacts of their developments on their own lands. Mitigation Parks are an effective way to protect native plant communities and the plants and animals that rely on them. Hickey Creek Mitigation Park was originally established by the FWC and Lee County to mitigate for gopher tortoise (*Gopherus polyphemus*) habitat destroyed by development in southwest Florida.

About Hickey Creek Mitigation Park

The acquisition of lands to form this park started in 1994. Adding to 10 acres of land already preserved, Lee County's Environmentally Sensitive Lands Program and Florida Communities Trust purchased 770 acres. Five parcels, totaling 82 acres, were acquired through Conservation 20/20. The park was opened to the public on April 20, 2002, making this a natural area for all to enjoy. Hickey Creek Mitigation Park encompasses 862 acres of land consisting of pine flatwoods, scrubby flatwoods, freshwater marshes, cypress swamps, hardwood hammocks and oak-palm forests. The creek flows through the park for over 1 mile and discharges into the Caloosahatchee River.

Wildlife

The terrestrial and aquatic communities within HCMP support a variety of wildlife including gopher tortoises, Florida scrub-jays, Florida panthers, bobcats, eastern indigo snakes, American alligators, river otters and a variety of birds. Hickey Creek is part of The Great Calusa Blueway paddling trail, visit www.calusabueway.com for more information.

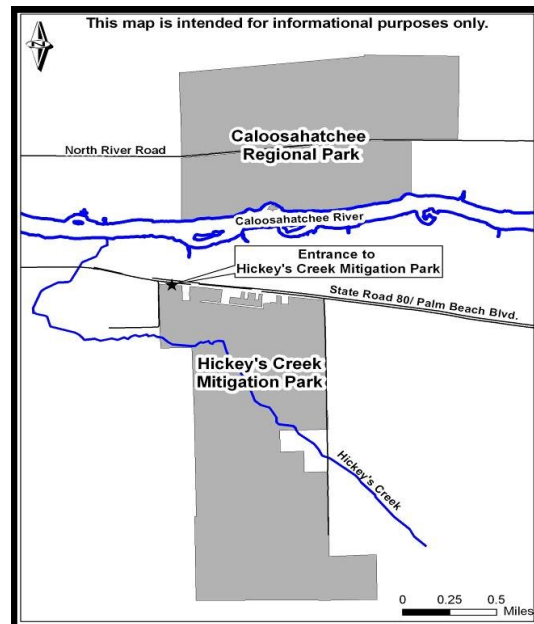


Accessibility

ADA accessibility is available from the parking area to the amphitheater and continues to the fishing pier and creek overlook. The remainder of the trails are primitive and not accessible to strollers. All canoes/kayaks must be portaged approx. 0.4 mile from the parking area to the launch site.

Park Rules and Regulations

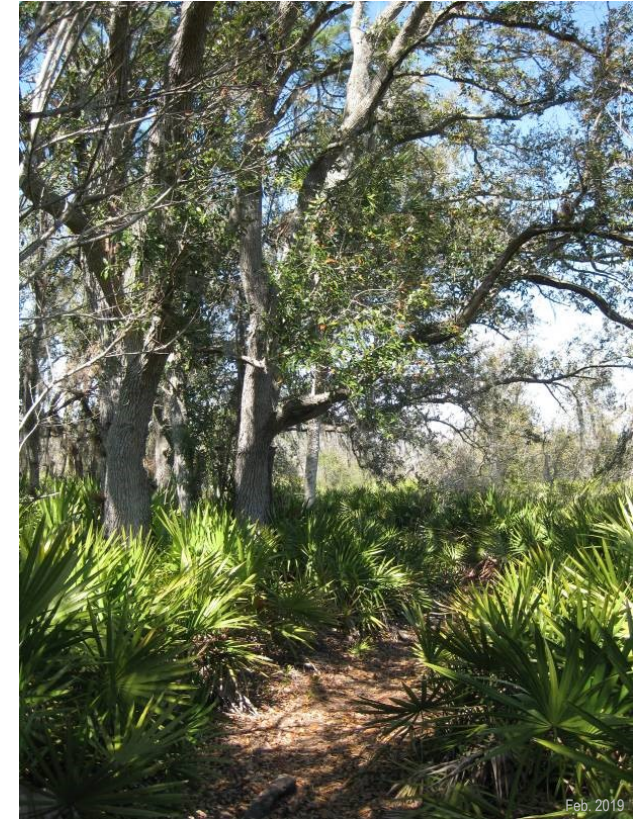
No alcohol, pets, bicycles, camping or collection of any natural or cultural resources is permitted. Fishing is allowed from the fishing pier with the proper license. Lee County Ordinance 18-12 (as amended) is enforced in the park.



Lee County Parks & Recreation

Hickey Creek Mitigation Park

17980 Palm Beach Blvd., Alva, FL 33920



Hours

Open Daily from 7 a.m.-6 p.m.

Fees

Parking

\$1 per hour / \$5 per day all location Please pay for parking by following posted instructions.



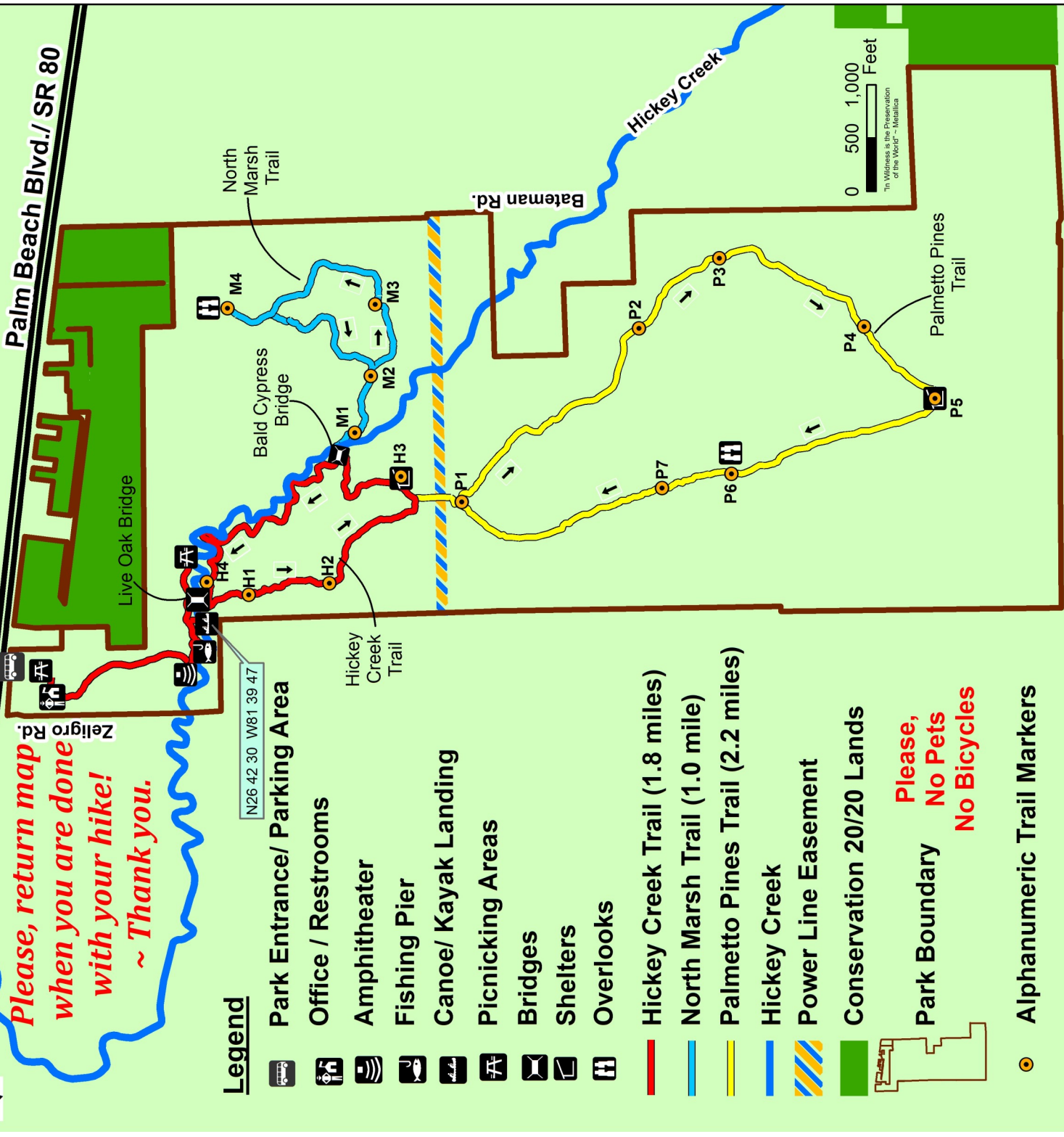
Contact the Park
(239) 694-0398
www.leeparks.org

Trail Map for Hickey Creek Mitigation Park



*Please, return map when you are done with your hike!
~ Thank you.*

All hiking trails are color coded with posts that coordinate with this trail map. Arrows represent the recommended direction of travel.



Legend

- Park Entrance/ Parking Area
 - Office / Restrooms
 - Amphitheater
 - Fishing Pier
 - Canoe/ Kayak Landing
 - Picnicking Areas
 - Bridges
 - Shelters
 - Overlooks
 - Hickey Creek Trail (1.8 miles)
 - North Marsh Trail (1.0 mile)
 - Palmetto Pines Trail (2.2 miles)
 - Hickey Creek
 - Power Line Easement
 - Conservation 20/20 Lands
 - Park Boundary
 - Alphanumeric Trail Markers
- Please, No Pets, No Bicycles**

Hiking Tips: Sturdy boots, sunscreen, appropriate clothing and an ample supply of water are strongly recommended when hiking our trails. Trails run perpendicular to service roads and fire lanes. PLEASE, stay on the marked trails at all times. During the rainy season, trails may be under water – especially the North Marsh Trail. The arrows on the map represent the suggested path of travel - this will ensure that all color coded posts are always on your right as you hike our trails. Additionally, alphanumeric markers that appear on this map correspond to markers on the trail system. We encourage you to take a mobile phone with you while hiking. Thank you for visiting - enjoy your hike!