

GENERAL NOTES

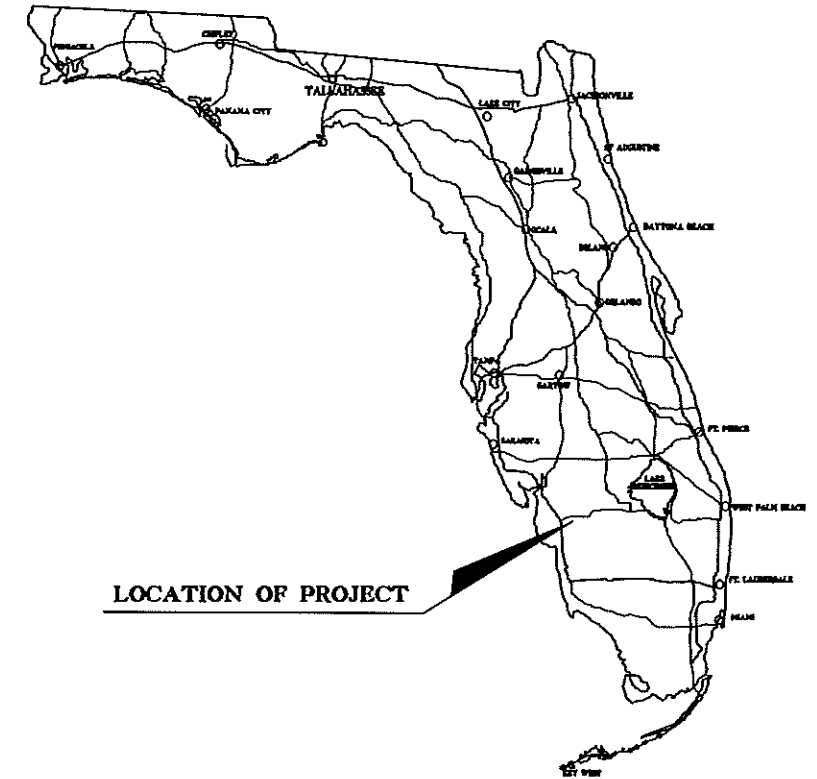
1. THIS RIGHT OF WAY MAP IS SUPPORTED BY A RIGHT OF WAY CONTROL SURVEY DATED AUGUST 21, 2007, PREPARED UNDER THE RESPONSIBLE CHARGE OF MARK J. HOLT, FLORIDA PROFESSIONAL SURVEYOR AND MAPPER NUMBER 6541. CERTIFIED COPIES OF THE RIGHT OF WAY CONTROL SURVEY CAN BE OBTAINED FROM OUR FORT MYERS, FLORIDA OFFICE. (SEE ADDRESS DEPICTED HEREON)
2. BEARINGS SHOWN ON THIS MAP ARE BASED ON THE ABOVE REFERENCE RIGHT OF WAY CONTROL SURVEY, DERIVING A BEARING OF N 45°16'10" W BETWEEN SURVEY BASE LINE P.I. STATION 97-90.36 AND P.I. STATION 152+68.88.
3. PROPERTY BOUNDARIES DETERMINED FROM CERTIFIED SURVEYS, PLATS OF RECORD AND RECORD TITLE. ALL REFERENCED OFFICIAL RECORDS AND PLATS ARE RECORDED IN THE COUNTY OF PROJECT LOCATION, UNLESS OTHERWISE NOTED.
4. ATTENTION IS DIRECTED TO THE FACT THAT THIS MAP MAY HAVE BEEN ALTERED IN SIZE BY REPRODUCTION. THIS MUST BE CONSIDERED WHEN OBTAINING SCALED DATA.
5. THE EFFECTS OF ROUNDING MUST BE CONSIDERED WHEN USING THIS MAP. ALL BEARINGS AND ANGLES HAVE BEEN ROUNDED TO THE NEAREST SECOND WITH DISTANCES BEING ROUNDED TO THE NEAREST HUNDRETH OF A FOOT.
6. ALL DISTANCES ARE FIELD MEASURED UNLESS OTHERWISE NOTED.
7. ONLY FIXED IMPROVEMENTS PERTINENT TO THE PARCELS TO BE ACQUIRED ARE SHOWN. FIXED INTERIOR IMPROVEMENTS AND UNDERGROUND, FOUNDATION ENCROACHMENTS, IF ANY, HAVE NOT BEEN LOCATED.
8. THIS RIGHT OF WAY MAP WAS PREPARED FOR THE PURPOSE OF PREPARING LEGAL LAND DESCRIPTIONS, ACQUISITION DOCUMENTS, MONUMENTATION, PROPERTY MANAGEMENT AND AS AN AID IN THE APPRAISAL OF THE RIGHT OF WAY REQUIRED FOR TRANSPORTATION FACILITIES.

THIS MAP IS NOT A SURVEY

RIGHT-OF-WAY MAP HOMESTEAD ROAD

FROM: SOUTH OF SUNRISE BOULEVARD
TO: NORTH OF ALABAMA ROAD

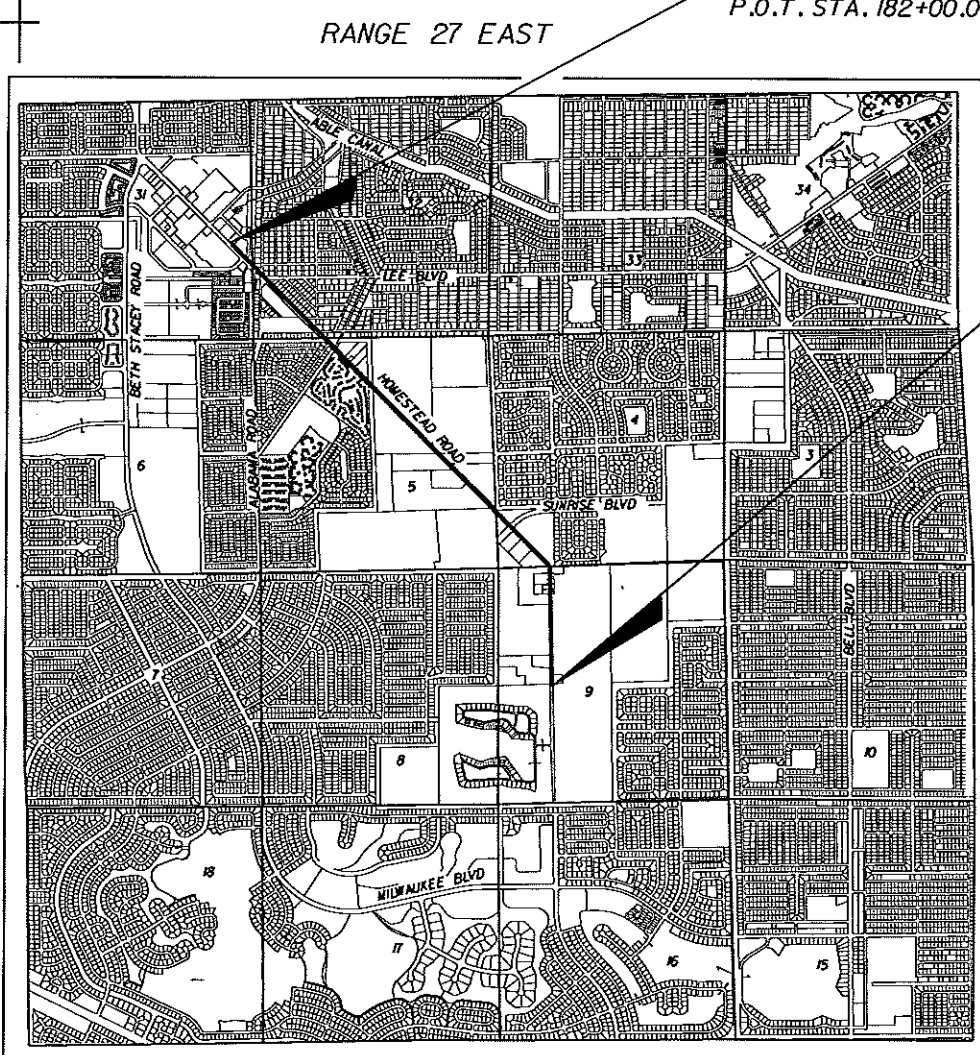
SECTIONS 31 & 32, TOWNSHIP 44 SOUTH, RANGE 27 EAST AND
SECTIONS 4, 5, & 9, TOWNSHIP 45 SOUTH, RANGE 27 EAST
LEE COUNTY, FLORIDA
LEE COUNTY PROJECT NO. CN-06-17
PROJECT LENGTH 2.437 MILES



LEGEND

- | | |
|---|--|
| A.P.P.R.D. = AS PER PUBLIC RECORDS OF | MON. = MONUMENT |
| A.K.A. = ALSO KNOWN AS | N.A.D. = NORTH AMERICAN DATUM |
| AC. = ACRES | N/C. = WITH NO CAP |
| AD. = AHEAD | N.T.S. = NOT TO SCALE |
| AVE. = AVENUE | N.G.S. = NATIONAL GEODETIC SURVEY |
| B.D.S. = BEGINNING OF SURVEY | N/A. = NOT APPLICABLE |
| BK. = BACK | NO. = NUMBER |
| BLDG. = BUILDING | O/A. = OVERALL |
| BLVD. = BOULEVARD | O.R.B. = OFFICIAL RECORD BOOK |
| BUS. = BUSINESS | P.B. = PLAT BOOK |
| CB. = CONDOMINIUM BOOK | P.C. = POINT OF CURVATURE |
| C.B. = CHORD BEARING | P.C.P. = POINT OF COMPOUND CURVATURE |
| CBS. = CONCRETE BLOCK STRUCTURE | PE. = PERPETUAL EASEMENT |
| C.C. = COUNTY COMMISSION | P.I. = POINT OF INTERSECTION |
| C.I.R. = CAPPED IRON ROD | P.K. = PARKER-KALON NAIL |
| C.M. = CONCRETE MONUMENT | PKWY. = PARKWAY |
| C.P. = CONCRETE PIPE | P.L.S. = PROFESSIONAL LAND SURVEYOR |
| C.R. = COUNTY ROAD | P.D.B. = POINT OF BEGINNING |
| CH. = CHAINS | P.D.C. = POINT OF COMMENCEMENT |
| CO. = COUNTY | P.D.L. = POINT ON LINE |
| COMM. = COMMERCIAL | P.D.T. = POINT ON TANGENT |
| CONC. = CONCRETE | P.P. = POWER POLE |
| COR. = CORNER | P.R.C. = POINT OF REVERSE CURVATURE |
| C/P. = CHAIN LINK FENCE | P.R.M. = PERMANENT REFERENCE MONUMENT |
| D. = DEGREE OF CURVATURE | P.T. = POINT OF TANGENCY |
| D.B. = DEED BOOK | RD. = ROAD |
| D.H. = DRILLED HOLE | PL. = PLACE |
| D.E.P. = DEPARTMENT OF ENVIRONMENTAL PROTECTION | PRELIM. = PRELIMINARY |
| D.F.T.C.M. = DEPARTMENT OF TRANSPORTATION WITH F.D.D.T. BRASS DISK | PROJ. = PROJECT |
| DR. = DRIVE | R. = RADUS |
| EOP. = EDGE OF PAVEMENT | R.L.S. = REGISTERED LAND SURVEYOR |
| E.D.S. = END OF SURVEY | RD. = ROAD |
| EQ. = EQUATION | RDWY. = ROADWAY |
| ESMT. = EASEMENT | RES. = RESIDENCE |
| EXIST. = EXISTING | RGE. = RANGE |
| F.A. = FEDERAL AID | R/R. = RAILROAD |
| F.D.D.T. = FEDERAL DEPARTMENT OF TRANSPORTATION | R/R SPK. = RAILROAD SPIKE |
| F.J.R. = FOUND IRON ROD | RT. = RIGHT |
| F.J.P. = FOUND IRON PIPE | R/W. = RIGHT OF WAY |
| FND. = FOUND | R/W. = LEE COUNTY DEPARTMENT OF TRANSPORTATION |
| F.P.K. = FOUND PARKER-KALON NAIL | R/W. = RIGHT OF WAY MAP |
| F.P.L. = FLORIDA POWER & LIGHT | R.W.T. = RIGHT OF WAY TAKE |
| F.C.M. = FOUND 6" X 6" CONCRETE MONUMENT WITH NO CAP UNLESS OTHERWISE NOTED | S.C.M. = SET 4" X 4" CONCRETE MONUMENT WITH DISK |
| G.L.D. = GOVERNMENT LAND OFFICE | S.E. = SLOPE EASEMENT |
| GOVT. = GOVERNMENT | S.F. = SQUARE FEET |
| INC. = INCORPORATED | SHT. = SHEET |
| L. = LENGTH OF CURVE | S.I.R.C. = SET 1/2" IRON ROD W/CAP "1/2" LB 6566" |
| LB. = LAND SURVEYING BUSINESS REGISTRATION NO. | S.P.K.D. = SET 1/2" IRON ROD W/ DISK "1/2" LB 6566" |
| LS. = LAND SURVEYOR REGISTRATION NO. | S.R. = STATE ROAD |
| L.D.D.T. = LEE COUNTY DEPARTMENT OF TRANSPORTATION | S.W. = SIDEWALK |
| L.A. = LICENSE AGREEMENT | SEC. = SECTION |
| LL. = LAND LINE | ST. = STREET |
| L.O.C. = LIMITS OF CONSTRUCTION | STA. = STATION |
| L/A. = LIMITED ACCESS | SUB. = SUBDIVISION |
| LN. = LAKE | STY. = STORY |
| LTM. = LIGHTERWOOD | SWFWD. = SOUTHWEST FLORIDA WATER MANAGEMENT DISTRICT |
| LT. = LEFT | T. = TANGENT LENGTH OF CURVE |
| LTD. = LIMITED | T-C. = TANGENT TO CURVE |
| M.B. = MAP BOOK | TCE. = TEMPORARY CONSTRUCTION EASEMENT |
| M.D.L. = MORE OR LESS | TERR. = TERRACE |
| MAINT. = MAINTAINED | TWP. = TOWNSHIP |
| MAS. = MASONRY | T.J.J.T.F. = TRUSTEES OF THE INTERNAL IMPROVEMENT TRUST FUND |
| MI. = MILE(S) | TYP. = TYPICAL |
| COUNTY LINE | U.E. = UTILITY EASEMENT |
| TOWNSHIP LINE | W.P.I. = WORK PROGRAM ITEM |
| SECTION LINE | W. = WITH |
| UNFENCED PROPERTY | BL. = BASE LINE |
| CITY LINE | CL. = CENTER LINE |
| FENCE LINE | PL. = PROPERTY LINE OF PARENT TRACT |
| RIGHT OF WAY LINE (PROPOSED) | Δ. = DELTA (CENTRAL ANGLE) |
| BASE OR SURVEY LINE | (C) = CALCULATED DATA |
| RAILROADS | (D) = DEED DATA |
| LIMITED ACCESS LINE | (F) = FIELD DATA |
| LIMITS OF CONSTRUCTION | (P) = PLAT DATA |
| UTILITY EASEMENT (PROPOSED) | * = NUMBER |
| TEMPORARY CONSTRUCTION EASEMENT (PROPOSED) | ⊙ = SIGN LOCATION |
| CONTIGUOUS PROPERTY OWNERSHIP | ⊙ = TREE LOCATION |
| | ⊙ = SHRUB LOCATION |

TOWNSHIP 44 SOUTH
TOWNSHIP 45 SOUTH



VICINITY MAP (NOT TO SCALE)

END R/W PROJECT
HOMESTEAD ROAD
P.O.T. STA. 182+00.00

BEGIN R/W PROJECT
P.O.T. STA. 53+31.00



INDEX	
SHEET NO.	SHEET DESCRIPTION
1	COVER SHEET
2 - 4	KEY MAPS
5 - 19	DETAIL SHEETS
20 - 23	TABLE OF OWNERSHIPS

MAPS PREPARED BY:
MCKIM & CREED, P.A.
10970 SOUTH CLEVELAND AVENUE, SUITE 401
FORT MYERS, FLORIDA 33907-2315
PHONE: (239) 275-8875
LB NO. 6566

HOMESTEAD ROAD
FROM: SOUTH OF SUNRISE BOULEVARD
TO: NORTH OF ALABAMA ROAD
THIS MAP IS NOT A SURVEY

DOT Log # 4346

REVISIONS					
DATE	BY	DESCRIPTION	DATE	BY	DESCRIPTION

MCKIM & CREED
10970 South Cleveland Avenue
Fort Myers, FL 33907-2315
Phone: (239) 275-8875
Fax: (239) 275-7029

Licensed Business
No. 6566
www.mckimcreed.com

PUBLIC WORKS
LEE COUNTY
SOUTHWEST
FLORIDA
1500 MONROE STREET
FORT MYERS, FLORIDA 33901
(239) 475-8908 www.lee-county.com/publicworks/dot/11e.htm

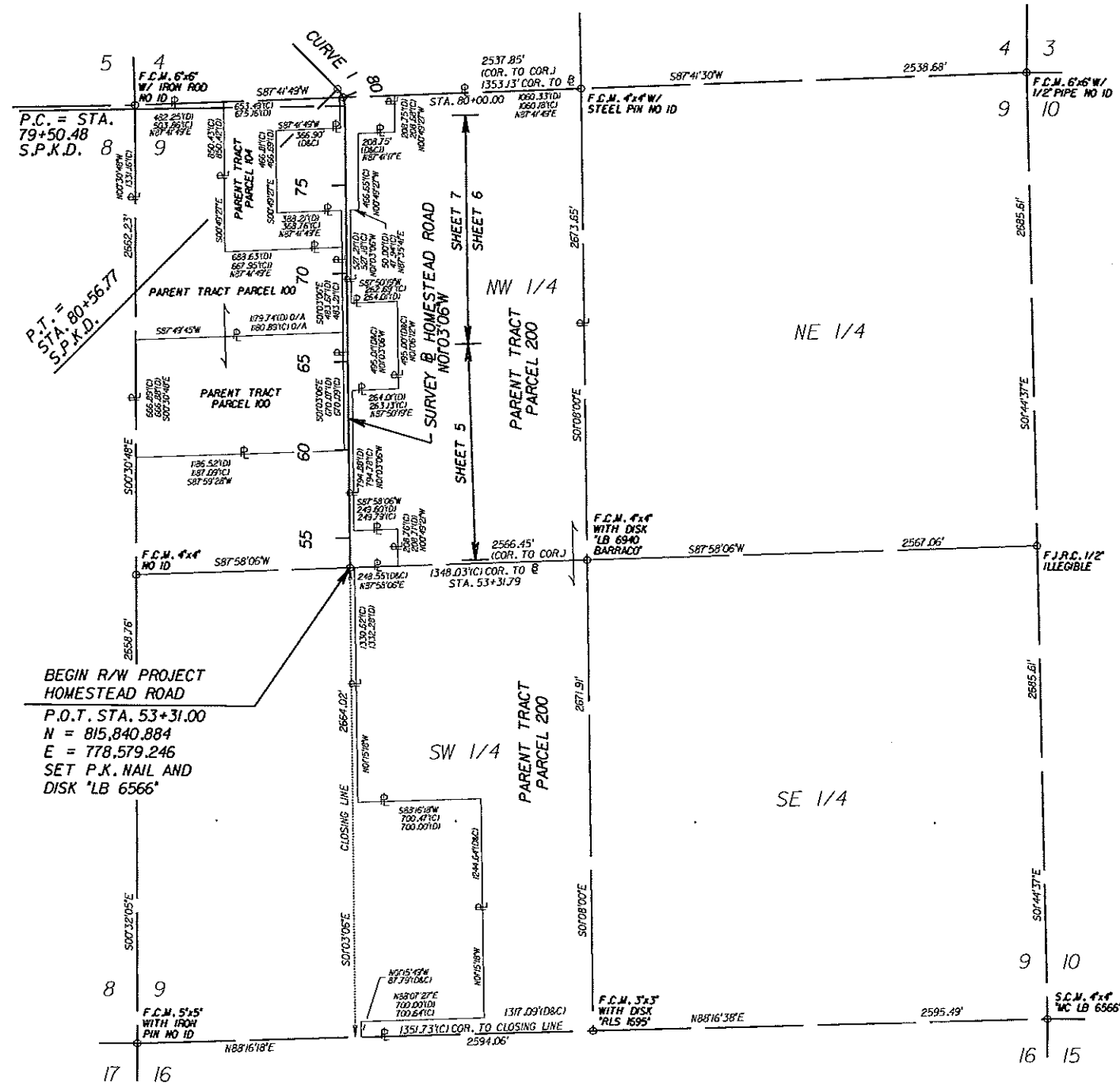
DEPARTMENT
of
TRANSPORTATION

RIGHT OF WAY MAP
COVER SHEET

SHEET
1
of
23
SHEETS

SECTION 9, TOWNSHIP 45 SOUTH, RANGE 27 EAST

SEE SHEET 3



CURVE 1
 P.I. STA. 80+06.43
 SET P.K. NAIL AND
 DISK "LB 6566"
 N = 818,515.860
 E = 778,530.141
 Δ = 44°12'43" (LT.)
 D = 41°35'39"
 T = 55.95'
 L = 106.29'
 R = 137.75'
 P.C. STA. 79+50.48
 P.T. STA. 80+56.77



BEGIN R/W PROJECT
 HOMESTEAD ROAD
 P.O.T. STA. 53+31.00
 N = 815,840.884
 E = 778,579.246
 SET P.K. NAIL AND
 DISK "LB 6566"

HOMESTEAD ROAD
 FROM: SOUTH OF SUNRISE BOULEVARD
 TO: NORTH OF ALABAMA ROAD
 SEE SHEET 1 FOR LEGEND AND GENERAL NOTES
 THIS MAP IS NOT A SURVEY

REVISIONS					
DATE	BY	DESCRIPTION	DATE	BY	DESCRIPTION

MCKIM & CREED
 10370 South Cleveland Avenue
 Fort Myers, FL 33907-2315
 Phone: (239) 275-8875
 Fax: (239) 275-7029
 Licensed Business
 No. 6566
 www.mckimcreed.com

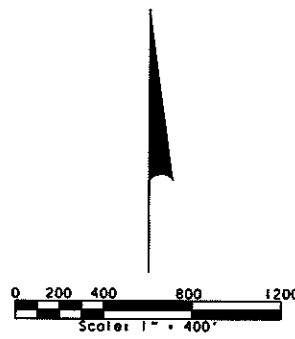
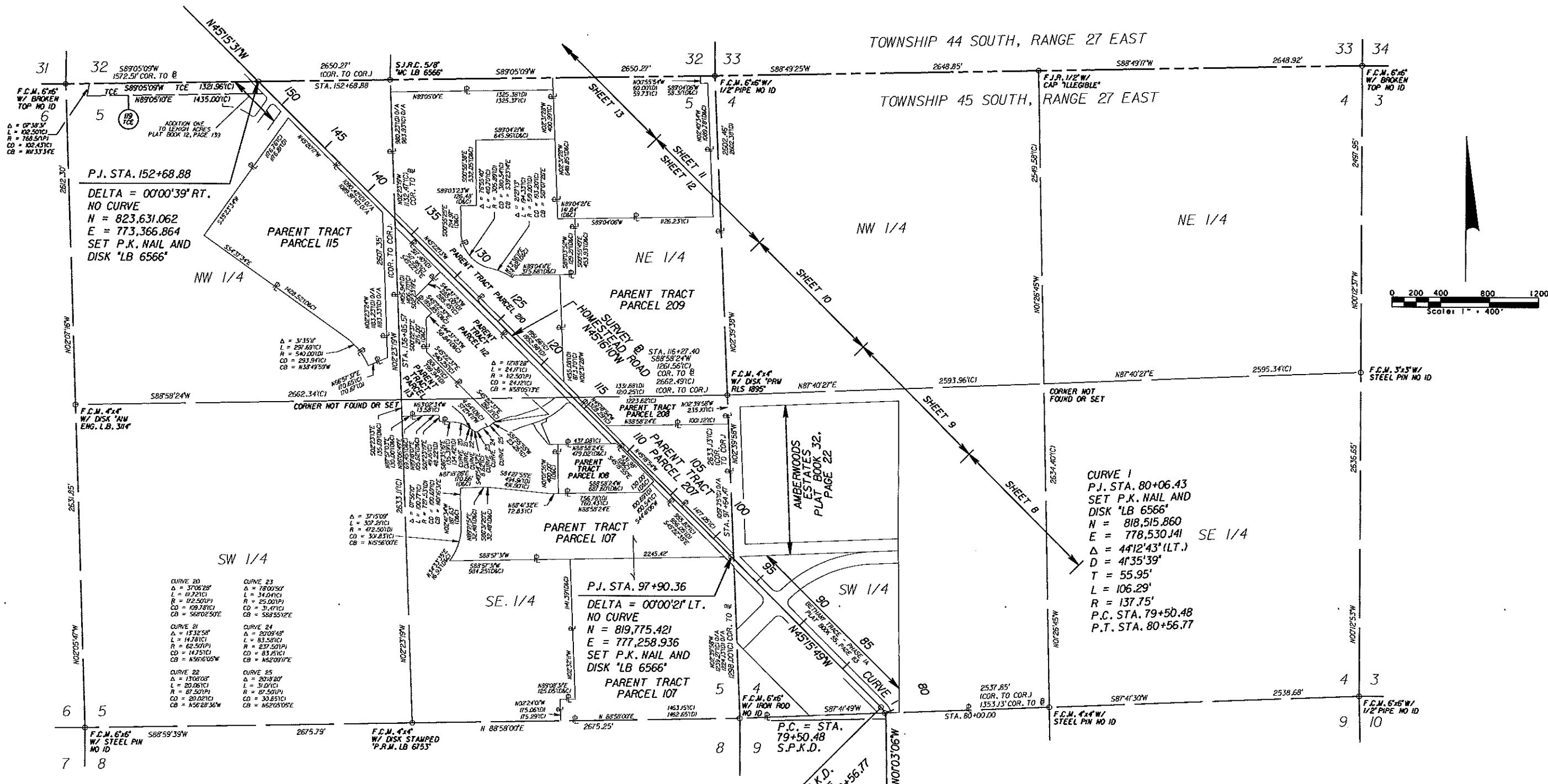
PUBLIC WORKS
 LEE COUNTY
 DEPARTMENT
 of
 SOUTHWEST FLORIDA
 TRANSPORTATION
 1500 MONROE STREET
 FORT MYERS, FLORIDA 33981
 (239) 479-8900 www.lee-county.com/publicworks/default.htm

RIGHT OF WAY MAP
 KEY MAP "A"

SHEET
 2 of
 23
 SHEETS

SECTIONS 4 AND 5, TOWNSHIP 45 SOUTH, RANGE 27 EAST

SEE SHEET 4



SEE SHEET 2

HOMESTEAD ROAD
 FROM: SOUTH OF SUNRISE BOULEVARD
 TO: NORTH OF ALABAMA ROAD
 SEE SHEET 1 FOR LEGEND AND GENERAL NOTES
 THIS MAP IS NOT A SURVEY

REVISIONS					
DATE	BY	DESCRIPTION	DATE	BY	DESCRIPTION

MCKIM & CREED
 10970 South Cleveland Avenue
 Fort Myers, FL 33907-2315
 Phone: (239) 275-8875
 Fax: (239) 275-7029
 Licensed Business No. 6566
 www.mckimcreed.com

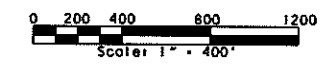
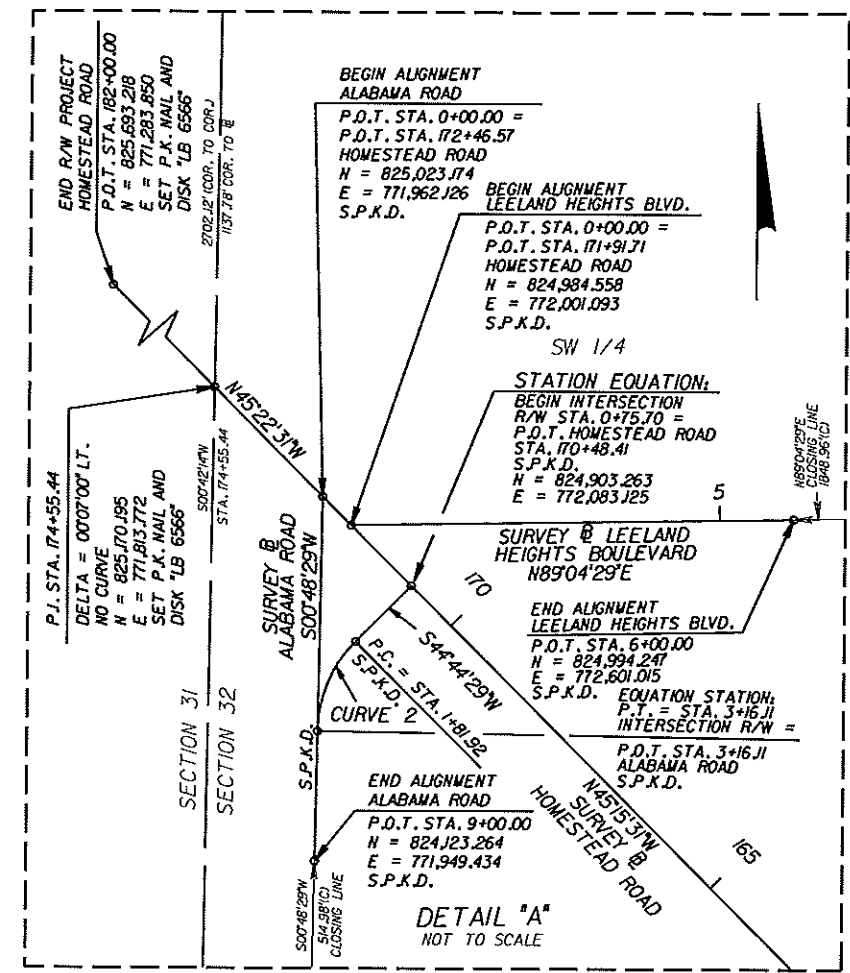
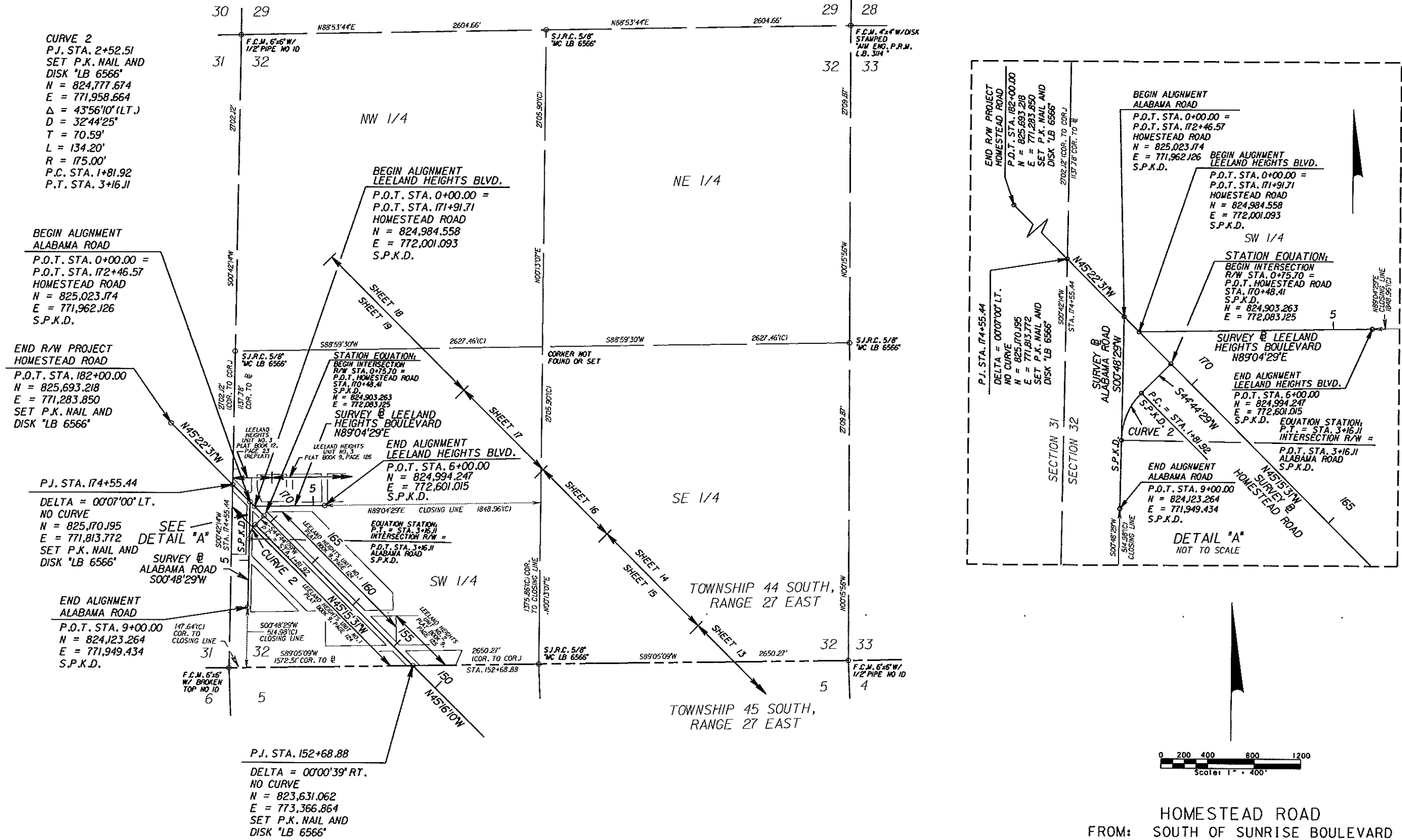
PUBLIC WORKS
 LEE COUNTY
 SOUTHWEST FLORIDA
 1500 MONROE STREET
 (239) 474-8900 www.lee-county.com/publicworks/doctype.htm

DEPARTMENT of TRANSPORTATION
 FORT MYERS, FLORIDA 33901

RIGHT OF WAY MAP
 KEY MAP "B"

SHEET 3 of 23 SHEETS

SECTION 32, TOWNSHIP 44 SOUTH, RANGE 27 EAST



HOMESTEAD ROAD
 FROM: SOUTH OF SUNRISE BOULEVARD
 TO: NORTH OF ALABAMA ROAD

SEE SHEET 1 FOR LEGEND AND GENERAL NOTES
 THIS MAP IS NOT A SURVEY

SEE SHEET 3

REVISIONS					
DATE	BY	DESCRIPTION	DATE	BY	DESCRIPTION

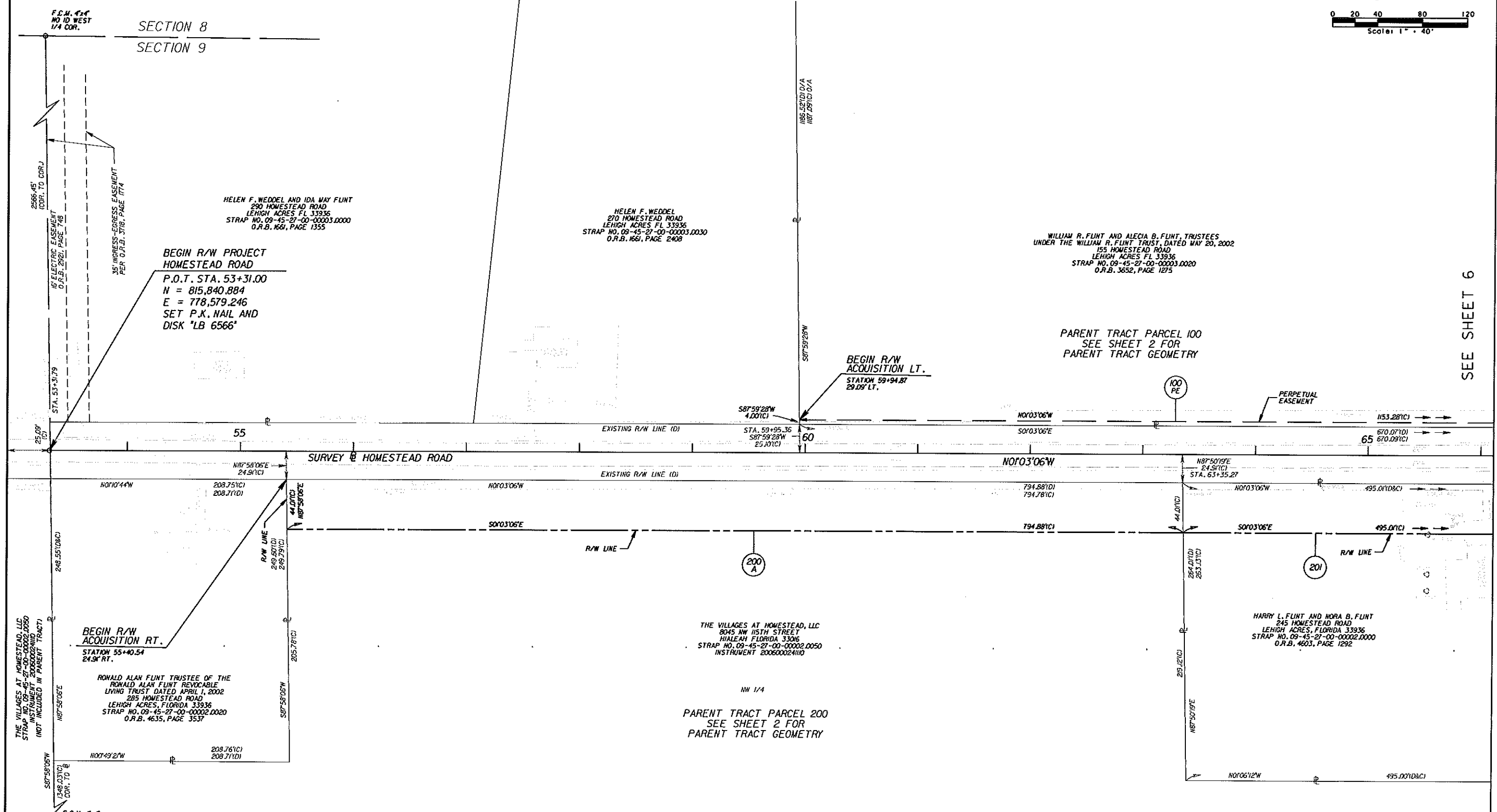
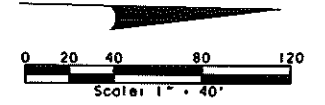
MKIM & CREED
 10970 South Cleveland Avenue
 Fort Myers, FL 33907-2315
 Phone: (239) 275-8875
 Fax: (239) 275-7029
www.mkimcreed.com

PUBLIC WORKS
 LEE COUNTY
 DEPARTMENT
 of
 SOUTHWEST TRANSPORTATION
 FLORIDA
 1500 MONROE STREET
 FORT MYERS, FLORIDA 33981
 (239) 479-8900 www.lee-county.com/publicworks/default.htm

RIGHT OF WAY MAP
 KEY MAP "C"

SHEET
 4 of
 23
 SHEETS

SECTION 9, TOWNSHIP 45 SOUTH, RANGE 27 EAST



SEE SHEET 6

HOMESTEAD ROAD
 FROM: SOUTH OF SUNRISE BOULEVARD
 TO: NORTH OF ALABAMA ROAD
 SEE SHEET 1 FOR LEGEND AND GENERAL NOTES
 THIS MAP IS NOT A SURVEY

REVISIONS					
DATE	BY	DESCRIPTION	DATE	BY	DESCRIPTION

MCKIM & CREED
 10970 South Cleveland Avenue
 Fort Myers, FL 33907-2315
 Phone: (239) 275-8875
 Fax: (239) 275-7029
 Licensed Business No. 6566
 www.mckimcreed.com

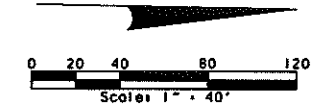
PUBLIC WORKS
 LEE COUNTY
 DEPARTMENT of SOUTHWEST FLORIDA TRANSPORTATION
 1500 MONROE STREET FORT MYERS, FLORIDA 33981
 1235 474-8900 www.lee-county.com/publicworks/dot/leish.htm

RIGHT OF WAY MAP
 DETAIL SHEET

SHEET 5 of 23 SHEETS

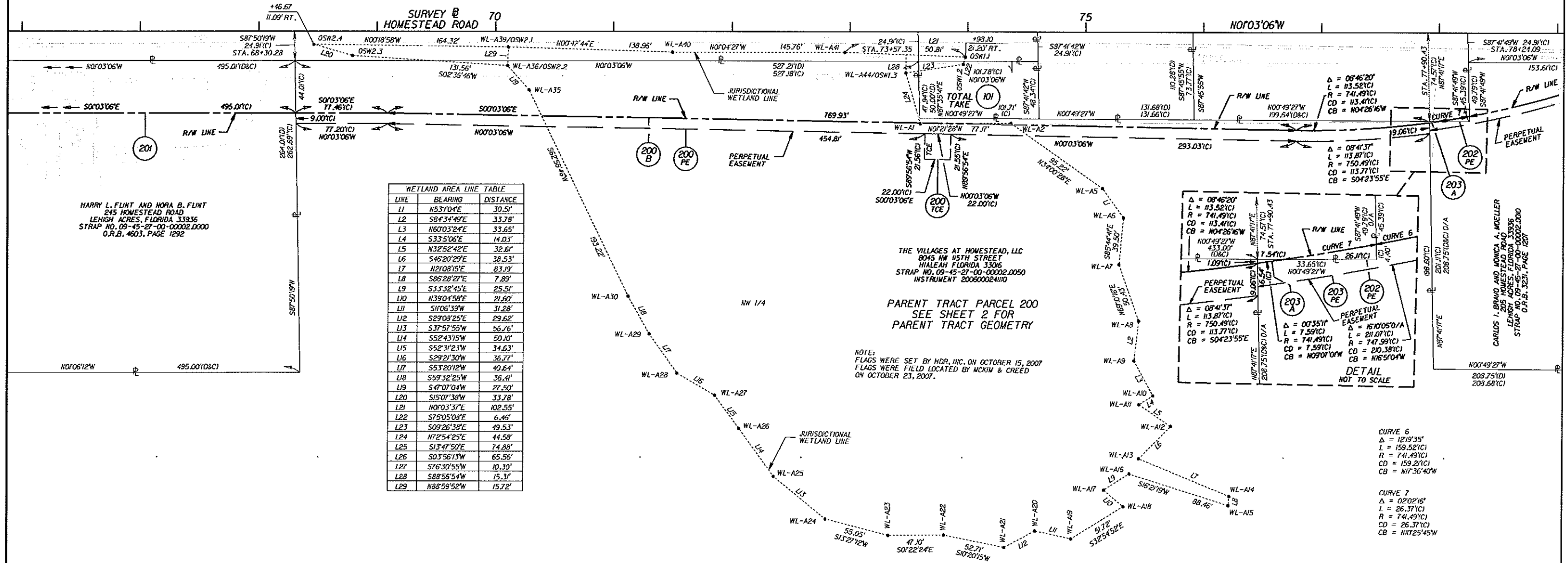
SECTION 9, TOWNSHIP 45 SOUTH, RANGE 27 EAST

SEE SHEET 7



SEE SHEET 5

SEE SHEET 8



WETLAND AREA LINE TABLE

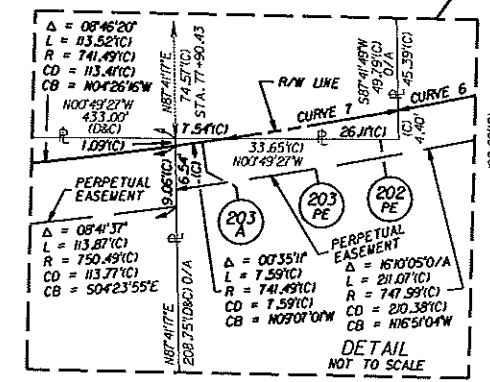
LINE	BEARING	DISTANCE
L1	N53°04'E	30.5'
L2	S84°34'49"E	33.78'
L3	N60°03'24"E	33.65'
L4	S33°50'E	14.03'
L5	N32°52'42"E	32.6'
L6	S46°20'29"E	38.53'
L7	N2°08'15"E	83.19'
L8	S86°28'27"E	7.89'
L9	S33°32'45"E	25.5'
L10	N39°04'58"E	21.60'
L11	S1°06'39"W	31.28'
L12	S29°08'25"E	29.62'
L13	S37°57'55"W	55.76'
L14	S52°43'13"W	50.10'
L15	S52°31'23"W	34.63'
L16	S29°21'30"W	36.77'
L17	S53°20'12"W	40.64'
L18	S59°32'25"W	36.4'
L19	S47°07'04"W	27.50'
L20	S15°07'38"W	33.78'
L21	N0°03'37"E	102.55'
L22	S75°05'08"E	6.46'
L23	S09°26'38"E	49.53'
L24	N72°54'25"E	44.58'
L25	S13°47'50"E	74.88'
L26	S03°56'13"W	65.56'
L27	S76°30'55"W	10.30'
L28	S88°56'54"W	15.31'
L29	N88°59'52"W	15.72'

HARRY L. FLINT AND MORA B. FLINT
245 HOMESTEAD ROAD
LEHIGH ACRES, FLORIDA 33936
STRAP NO. 09-45-27-00-00002.0000
O.R.B. 4603, PAGE 1292

THE VILLAGES AT HOMESTEAD, LLC
8045 NW 15TH STREET
HIALEAH FLORIDA 33006
STRAP NO. 09-45-27-00-00002.0050
INSTRUMENT 200600024110

PARENT TRACT PARCEL 200
SEE SHEET 2 FOR
PARENT TRACT GEOMETRY

NOTE:
FLAGS WERE SET BY HDR, INC. ON OCTOBER 15, 2007
FLAGS WERE FIELD LOCATED BY MCKIM & CREED
ON OCTOBER 23, 2007.



CURVE 6
Δ = 121°35'
L = 159.52(C)
R = 741.49(C)
CD = 159.21(C)
CB = N17°36'40"W

CURVE 7
Δ = 02°02'16"
L = 26.37(C)
R = 741.49(C)
CD = 26.37(C)
CB = N17°25'45"W

HOMESTEAD ROAD
FROM: SOUTH OF SUNRISE BOULEVARD
TO: NORTH OF ALABAMA ROAD
SEE SHEET 1 FOR LEGEND AND GENERAL NOTES
THIS MAP IS NOT A SURVEY

REVISIONS

DATE	BY	DESCRIPTION	DATE	BY	DESCRIPTION

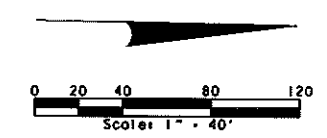
MCKIM & CREED
10970 South Cleveland Avenue
Fort Myers, FL 33907-2315
Phone: (239) 275-8875
Fax: (239) 275-7029
Licensed Business
No. 6566
www.mckimcreed.com

PUBLIC WORKS
LEE COUNTY
SOUTHWEST
FLORIDA
1500 MANROE STREET
FORT MYERS, FLORIDA 33901
DEPARTMENT
of
TRANSPORTATION
FORT MYERS, FLORIDA 33901
www.lee-county.com/publicworks/dot/title.htm

RIGHT OF WAY MAP
DETAIL SHEET

SHEET
6 of
23
SHEETS

SECTION 9, TOWNSHIP 45 SOUTH, RANGE 27 EAST



- CURVE 5**
 $\Delta = 25^{\circ}22'36''$
 $L = 50.87(C)$
 $R = 114.86(C)$
 $CD = 50.46(C)$
 $CB = S13^{\circ}44'24''E$
- CURVE 10**
 $\Delta = 11^{\circ}34'30''$
 $L = 17.73(C)$
 $R = 87.75(C)$
 $CD = 17.70(C)$
 $CB = S39^{\circ}28'34''E$
- CURVE 11**
 $\Delta = 02^{\circ}06'55''$
 $L = 23.76(C)$
 $R = 643.49(P)$
 $CD = 23.75(C)$
 $CB = N13^{\circ}54'40''W$
- CURVE 12**
 $\Delta = 16^{\circ}27'38''$
 $L = 185.44(C)$
 $R = 645.49(C)$
 $CD = 184.81(C)$
 $CB = N27^{\circ}03'03''W$
- CURVE 14**
 $\Delta = 09^{\circ}05'17''$
 $L = 102.54(C)$
 $R = 646.49(C)$
 $CD = 102.44(C)$
 $CB = S33^{\circ}46'48''E$
- CURVE 15**
 $\Delta = 08^{\circ}26'25''$
 $L = 95.38(C)$
 $R = 647.49(C)$
 $CD = 95.30(C)$
 $CB = N33^{\circ}24'40''W$
- CURVE 16**
 $\Delta = 02^{\circ}08'54''$
 $L = 24.20(C)$
 $R = 645.49(C)$
 $CD = 24.20(C)$
 $CB = N13^{\circ}53'41''W$

SEE SHEET 5

SEE SHEET 9

WILLIAM R. FLUNT AND ALECIA B. FLUNT, TRUSTEES
 UNDER THE WILLIAM R. FLUNT TRUST, DATED MAY 20, 2002
 155 HOMESTEAD ROAD
 LEHIGH ACRES, FL 33936
 STRAP NO. 09-45-27-00-00003.0020
 O.R.B. 3652, PAGE 1275

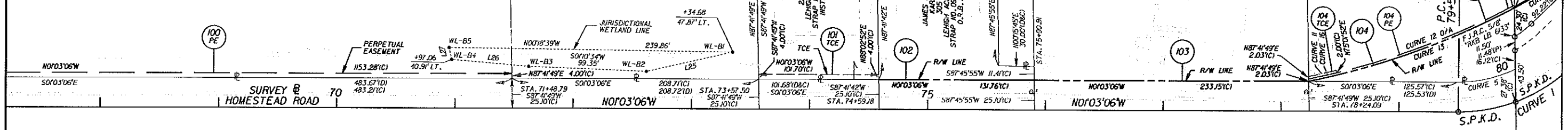
RONALD C. FLUNT
 200 HOMESTEAD ROAD
 LEHIGH ACRES, FLORIDA 33936
 STRAP NO. 09-45-27-00-00001.0000
 O.R.B. 2438, PAGE 745

LINE	BEARING	DISTANCE
L25	S13°47'50"E	74.88'
L26	S03°56'13"W	85.56'
L27	S76°30'55"W	10.30'

CURVE 1
 P.J. STA. 80+06.43
 SET P.K. NAIL AND
 DISK "LB 6566"
 $N = 818,515.860$
 $E = 778,530.141$
 $\Delta = 44^{\circ}12'43''(LT.)$
 $D = 47^{\circ}35'39''$
 $T = 55.95'$
 $L = 106.29'$
 $R = 137.75'$
 P.C. STA. 79+50.48
 P.T. STA. 80+56.77

LEHIGH ACRES LODGE #2266
 LOYAL ORDER OF THE MOOSE, INC
 210 HOMESTEAD ROAD
 LEHIGH ACRES, FLORIDA 33936
 STRAP NO. 09-45-27-00-00001.0001A
 O.R.B. 1105, PAGE 1122

PARENT TRACT PARCEL 100
 SEE SHEET 2 FOR
 PARENT TRACT GEOMETRY



SEE SHEET 6

HOMESTEAD ROAD
 FROM: SOUTH OF SUNRISE BOULEVARD
 TO: NORTH OF ALABAMA ROAD
 SEE SHEET 1 FOR LEGEND AND GENERAL NOTES
 THIS MAP IS NOT A SURVEY

REVISIONS					
DATE	BY	DESCRIPTION	DATE	BY	DESCRIPTION

MCKIM & CREED
 10970 South Cleveland Avenue
 Fort Myers, FL 33907-2315
 Phone: (239) 275-8875
 Fax: (239) 275-7029
 Licensed Business
 No. 6566
 www.mckimcreed.com

PUBLIC WORKS
 LEE COUNTY
 DEPARTMENT
 of
 SOUTHWEST
 TRANSPORTATION
 FLORIDA
 1500 MONROE STREET
 FORT MYERS, FLORIDA 33901
 (239) 479-8908 www.lee-county.com/publicworks/dotfiles.htm

RIGHT OF WAY MAP
 DETAIL SHEET

SHEET
 7 of
 23
 SHEETS

SECTION 4 AND 9, TOWNSHIP 45 SOUTH, RANGE 27 EAST



IGLESIA BAUTISTA EL BIEN PASTOR, INC.
P.O. BOX 505
LEHIGH ACRES, FLORIDA 33970
STRAP NO. 04-45-27-11-0000A.000
O.R.B. 3249, PAGE 4254

FLORIDA CONFERENCE ASSOCIATION OF
THE SEVENTH-DAY ADVENTISTS
P.O. BOX 625
LEHIGH ACRES, FLORIDA 33970
STRAP NO. 04-45-27-11-0000A.000
O.R.B. 2654, PAGE 3564

NOTE:
EASEMENTS ARE HEREBY RESERVED IN PERPETUITY FOR OVERHEAD
AND/OR UNDERGROUND PUBLIC UTILITIES AND ARE 10 FEET WIDE ALONG
THE FRONT ADJACENT TO ROADS, 6 FEET WIDE ALONG THE SIDES AND
8 FEET WIDE IN THE REAR OF EACH LOT AND TRACT UNLESS
OTHERWISE SHOWN (P)

CURVE 1
P.I. STA. 80+06.43
SET P.K. NAIL AND
DISK "LB 6566"
N = 818,515.860
E = 778,530.141
Δ = 441°43' (LT.)
D = 41'35"39"
T = 55.95'
L = 106.29'
R = 137.75'
P.C. STA. 79+50.48
P.T. STA. 80+56.77

SUBJECT TO BLANKET
ELECTRIC EASEMENT PER
O.R.B. 2539, PAGE 282
LOCATION INDETERMINATE

RECIPROCAL AGREEMENT AND
GRANT OF EASEMENT PER
O.R.B. 2654, PAGE 3567

SUBJECT TO BLANKET
ELECTRIC EASEMENT PER
O.R.B. 3168, PAGE 3711
LOCATION INDETERMINATE

SUBJECT TO BLANKET
ELECTRIC EASEMENT PER
O.R.B. 2539, PAGE 282
LOCATION INDETERMINATE

HOMESTEAD ROAD
FROM: SOUTH OF SUNRISE BOULEVARD
TO: NORTH OF ALABAMA ROAD
SEE SHEET 1 FOR LEGEND AND GENERAL NOTES
THIS MAP IS NOT A SURVEY

REVISIONS

DATE	BY	DESCRIPTION	DATE	BY	DESCRIPTION

MKIM & CREED
10970 South Cleveland Avenue
Fort Myers, FL 33907-2315
Phone: (239) 275-8875
Fax: (239) 275-7029

Licensed Business
No. 6566
www.mkimcreed.com

PUBLIC WORKS
LEE COUNTY
SOUTHWEST
FLORIDA

DEPARTMENT
of
TRANSPORTATION

1500 MONROE STREET
FORT MYERS, FLORIDA 33901
239 479-8700 www.lee-county.com/publicworks/detail.htm

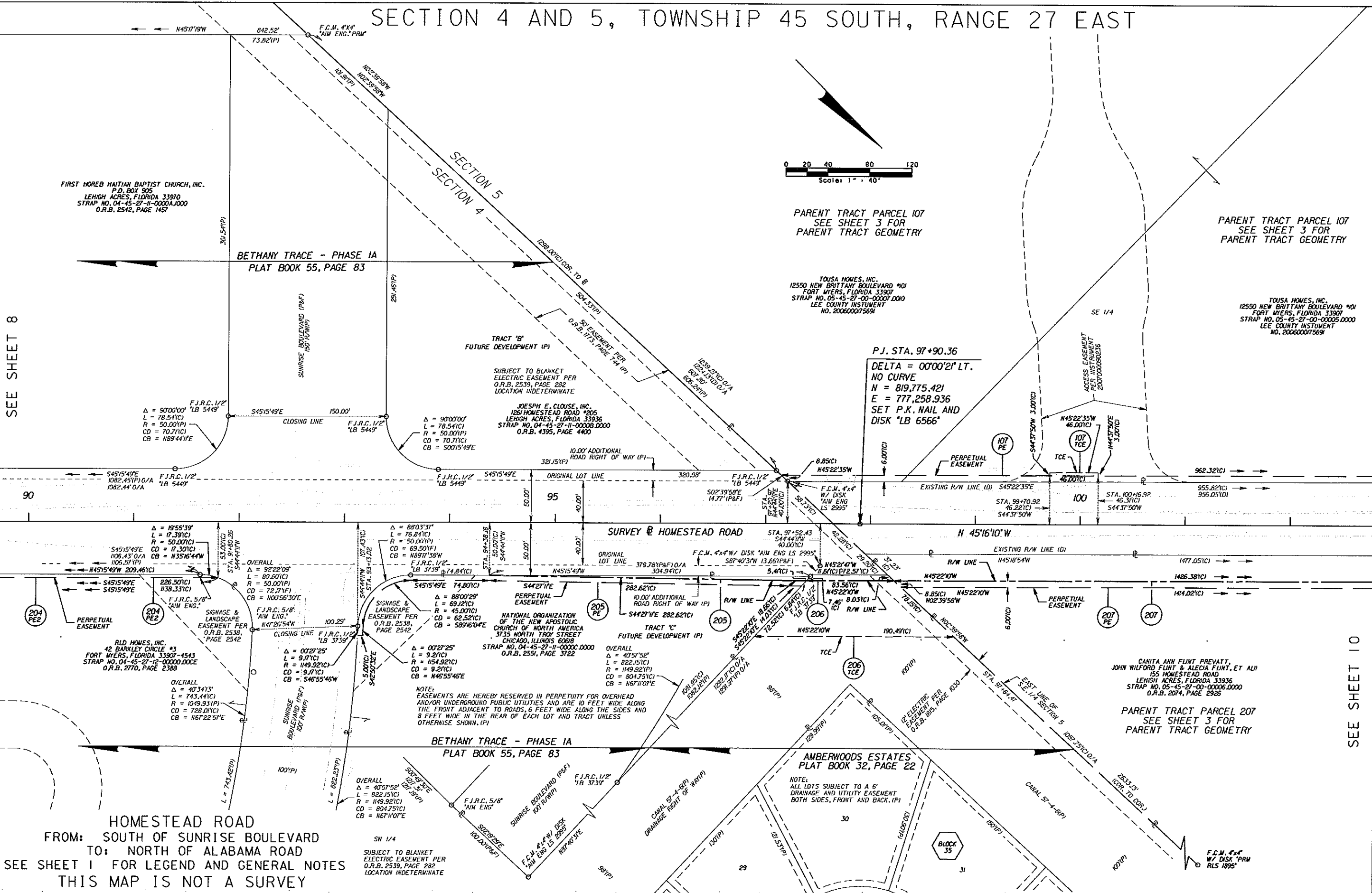
RIGHT OF WAY MAP
DETAIL SHEET

SHEET
8 of
23
SHEETS

SECTION 4 AND 5, TOWNSHIP 45 SOUTH, RANGE 27 EAST

SEE SHEET 8

SEE SHEET 10



HOMESTEAD ROAD
 FROM: SOUTH OF SUNRISE BOULEVARD
 TO: NORTH OF ALABAMA ROAD
 SEE SHEET 1 FOR LEGEND AND GENERAL NOTES
 THIS MAP IS NOT A SURVEY

REVISIONS					
DATE	BY	DESCRIPTION	DATE	BY	DESCRIPTION

MCKIM & CREED
 10370 South Cleveland Avenue
 Fort Myers, FL 33907-2315
 Phone: (239) 275-8875
 Fax: (239) 275-7029
 Licensed Business No. 6566
 www.mckimcreed.com

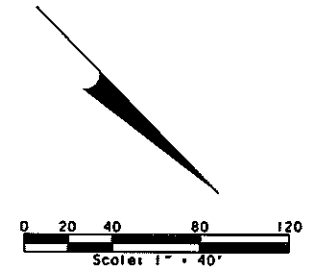
PUBLIC WORKS
 LEE COUNTY
 SOUTHWEST FLORIDA
 1500 MONROE STREET
 FORT MYERS, FLORIDA 33901
 (239) 478-8900 www.lee-county.com/publicworks/default.htm

DEPARTMENT of TRANSPORTATION

RIGHT OF WAY MAP
 DETAIL SHEET

SHEET
 9 of
 23 SHEETS

SECTION 5, TOWNSHIP 45 SOUTH, RANGE 27 EAST



SEE SHEET 9

SEE SHEET 11

PARENT TRACT PARCEL 107
SEE SHEET 3 FOR
PARENT TRACT GEOMETRY

TOUSA HOMES, INC.
12550 NEW BRITANNY BOULEVARD #01
FORT MYERS, FLORIDA 33907
STRAP NO. 05-45-27-00-00025.0000
LEE COUNTY INSTRUMENT
NO. 2006000175631

PARK PLACE II LTD.
4255 52ND PL WEST
BRADENTON, FLORIDA 34210
STRAP NO. 05-45-27-00-00005.0020
O.R.B. 2382, PAGE 399

CALOOSA LAKES, LLC
407 WEST STREET UNIT B
NAPLES, FLORIDA 34108
STRAP NO. 05-45-27-00-00005.0000
O.R.B. 404, PAGE 762

SUBJECT TO
BLANKET ELECTRIC EASEMENT
PER O.R.B. 2455, PAGE 2403
LOCATION INDETERMINATE

SUBJECT TO
UTILITY EASEMENT
PER O.R.B. 3523, PAGE 3704

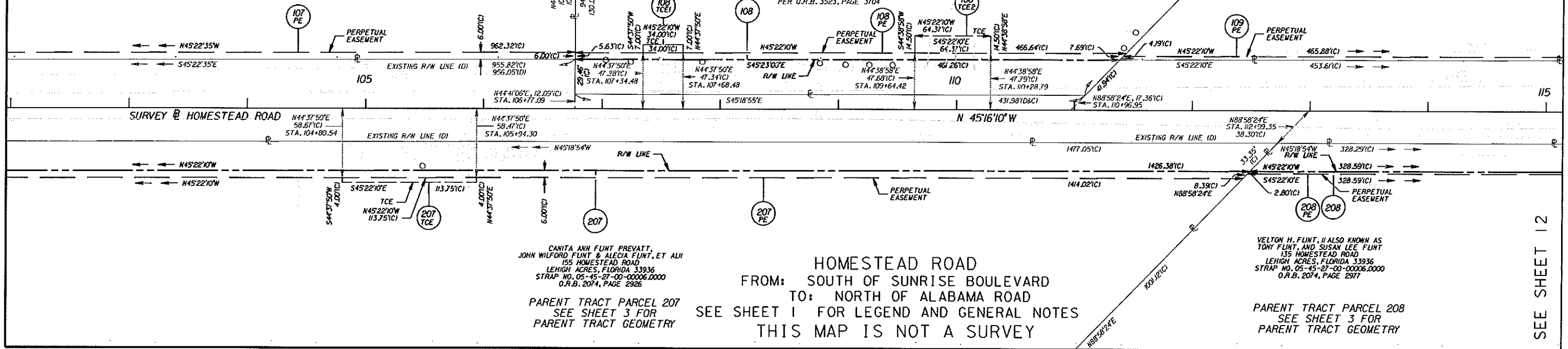
VELTON H. FLINT, II ALSO KNOWN AS
TONY FLINT, AND SUSAN LEE FLINT
135 HOMESTEAD ROAD
LEHIGH ACRES, FLORIDA 33936
STRAP NO. 05-45-27-00-00006.0000
O.R.B. 2074, PAGE 2977

CANITA ANH FLINT PREVATT,
JOHN WILFORD FLINT & ALECIA FLINT, ET ALI
155 HOMESTEAD ROAD
LEHIGH ACRES, FLORIDA 33936
STRAP NO. 05-45-27-00-00006.0000
O.R.B. 2074, PAGE 2926

HOMESTEAD ROAD
FROM: SOUTH OF SUNRISE BOULEVARD
TO: NORTH OF ALABAMA ROAD
SEE SHEET 1 FOR LEGEND AND GENERAL NOTES
THIS MAP IS NOT A SURVEY

PARENT TRACT PARCEL 207
SEE SHEET 3 FOR
PARENT TRACT GEOMETRY

PARENT TRACT PARCEL 208
SEE SHEET 3 FOR
PARENT TRACT GEOMETRY



REVISIONS					
DATE	BY	DESCRIPTION	DATE	BY	DESCRIPTION

MCKIM & CREED
10970 South Cleveland Avenue
Fort Myers, FL 33907-2315
Phone: (239) 275-8875
Fax: (239) 275-7029
Licensed Business
No. 6566
www.mckimcreed.com

PUBLIC WORKS
LEE COUNTY
SOUTHWEST
FLORIDA
1500 MONROE STREET
1239 479-8968 www.lee-county.com/publicworks/department

DEPARTMENT
of
TRANSPORTATION
FORT MYERS, FLORIDA 33981

RIGHT OF WAY MAP
DETAIL SHEET

SHEET
10 of
23
SHEETS

SEE SHEET 12

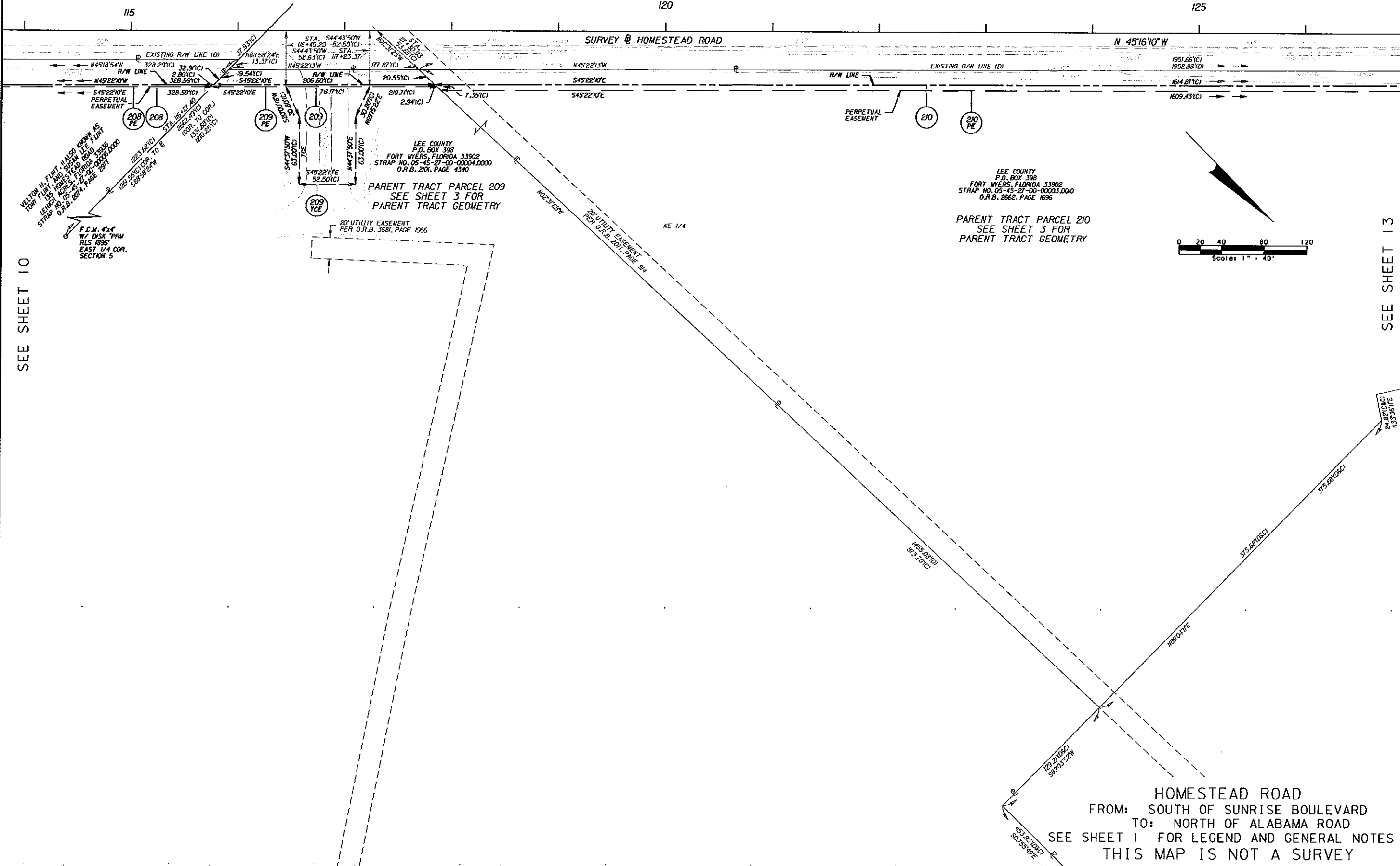
SECTION 5, TOWNSHIP 45 SOUTH, RANGE 27 EAST

120

125

SURVEY @ HOMESTEAD ROAD

N 45°16'10"W



SEE SHEET 10

SEE SHEET 13

LEE COUNTY
P.O. BOX 398
FORT MYERS, FLORIDA 33902
STRAP NO. 05-45-27-00-00003.0000
O.R.B. 2662, PAGE 1696

PARENT TRACT PARCEL 210
SEE SHEET 3 FOR
PARENT TRACT GEOMETRY

LEE COUNTY
P.O. BOX 398
FORT MYERS, FLORIDA 33902
STRAP NO. 05-45-27-00-00004.0000
O.R.B. 2601, PAGE 4340

PARENT TRACT PARCEL 209
SEE SHEET 3 FOR
PARENT TRACT GEOMETRY

HOMESTEAD ROAD
FROM: SOUTH OF SUNRISE BOULEVARD
TO: NORTH OF ALABAMA ROAD
SEE SHEET 1 FOR LEGEND AND GENERAL NOTES
THIS MAP IS NOT A SURVEY

REVISIONS					
DATE	BY	DESCRIPTION	DATE	BY	DESCRIPTION

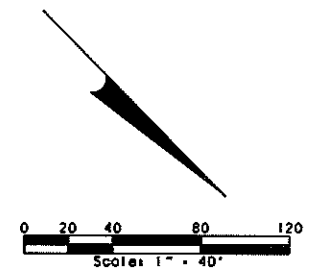
MCKIM & CREED
10970 South Cleveland Avenue
Fort Myers, FL 33907-2315
Phone: (239) 275-8875
Fax: (239) 275-7029
www.mckimcreed.com

PUBLIC WORKS
LEE COUNTY
SOUTHWEST TRANSPORTATION
FLORIDA
1500 MONROE STREET
FORT MYERS, FLORIDA 33901
4230 474-6908 www.lee-county.com/publicworks/dot/le1.htm

RIGHT OF WAY MAP
DETAIL SHEET

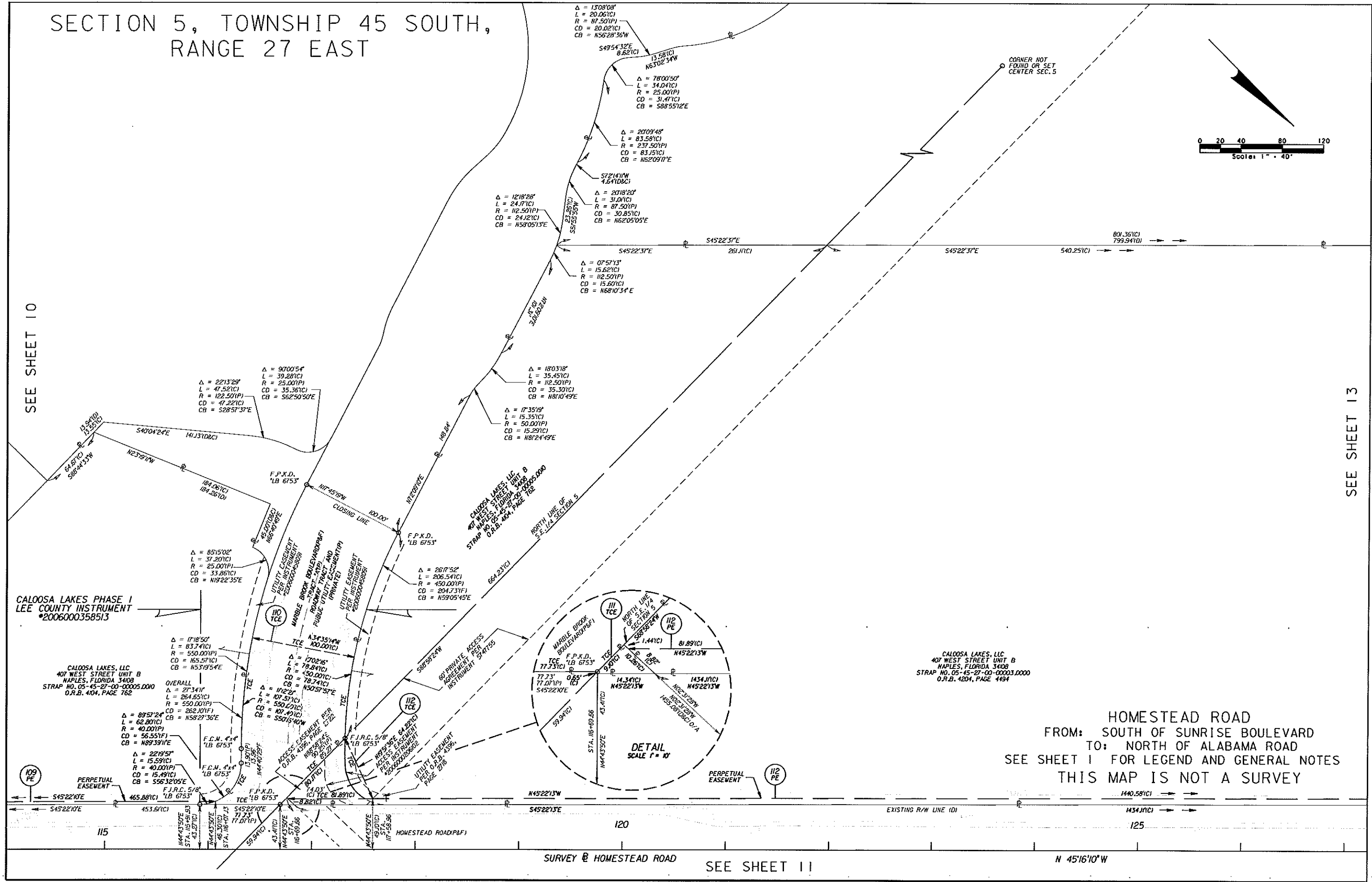
SHEET
11 of
23
SHEETS

SECTION 5, TOWNSHIP 45 SOUTH, RANGE 27 EAST



SEE SHEET 10

SEE SHEET 13



HOMESTEAD ROAD
FROM: SOUTH OF SUNRISE BOULEVARD
TO: NORTH OF ALABAMA ROAD
SEE SHEET 1 FOR LEGEND AND GENERAL NOTES
THIS MAP IS NOT A SURVEY

REVISIONS					
DATE	BY	DESCRIPTION	DATE	BY	DESCRIPTION

MCKIM & CREED
10970 South Cleveland Avenue
Fort Myers, FL 33907-2315
Phone: (239) 275-8875
Fax: (239) 275-7029
Licensed Business
No. 6566
www.mckimcreed.com

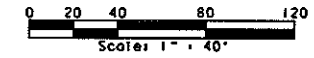
PUBLIC WORKS
LEE COUNTY
SOUTHWEST
FLORIDA
1500 MONROE STREET
FORT MYERS, FLORIDA 33901
1239 474-8900 www.lee-county.com/publicworks/dot/le.htm

DEPARTMENT
of
TRANSPORTATION

RIGHT OF WAY MAP
DETAIL SHEET

SHEET
12 of
23
SHEETS

SECTION 5, TOWNSHIP 45 SOUTH, RANGE 27 EAST



SEE SHEET 12

SEE SHEET 15

SEE SHEET 11

SEE SHEET 14

CALOOSA LAKES, LLC
407 WEST STREET UNIT B
NAPLES, FLORIDA 34108
STRAP NO. 05-45-27-00-00003.0000
O.R.B. 4204, PAGE 4494

TOUSA HOMES, INC.
12550 NEW BRITTANY BOULEVARD #01
FORT MYERS, FLORIDA 33907
STRAP NO. 05-45-27-00-00003.0030
LEE COUNTY INSTRUMENT 200600075691

PARENT TRACT PARCEL 113
SEE SHEET 3 FOR
PARENT TRACT GEOMETRY

PINWOOD CONDOMINIUM ASSOCIATION
15 PINWOOD BOULEVARD
LEHIGH ACRES, FLORIDA 33936
STRAP NO. 05-45-27-21-00000.D00E
O.R.B. 1846, PAGE 3334

LEE COUNTY
P.O. BOX 398
FORT MYERS, FLORIDA 33902
STRAP NO. 05-45-27-00-00003.0010
O.R.B. 2662, PAGE 1696

PARENT TRACT PARCEL 210
SEE SHEET 3 FOR
PARENT TRACT GEOMETRY

SUBJECT TO UTILITY EASEMENTS
PER O.R.B. 1008, PAGE 1024
LOCATION INDETERMINATE

HOMESTEAD ROAD
FROM: SOUTH OF SUNRISE BOULEVARD
TO: NORTH OF ALABAMA ROAD
SEE SHEET 1 FOR LEGEND AND GENERAL NOTES
THIS MAP IS NOT A SURVEY

$\Delta = 76^{\circ}55'40''$
 $L = 40.70(1C)$
 $R = 305.89(1D)$
 $CD = 380.54(1C)$
 $CB = 539.23(1E)$

THE SCHOOL BOARD OF LEE COUNTY
VETERANS PARK ACADEMY FOR ARTS

REVISIONS					
DATE	BY	DESCRIPTION	DATE	BY	DESCRIPTION

MCKIM & CREED
10970 South Cleveland Avenue
Fort Myers, FL 33907-2315
Phone: (239) 275-8875
Fax: (239) 275-7029
www.mckimcreed.com

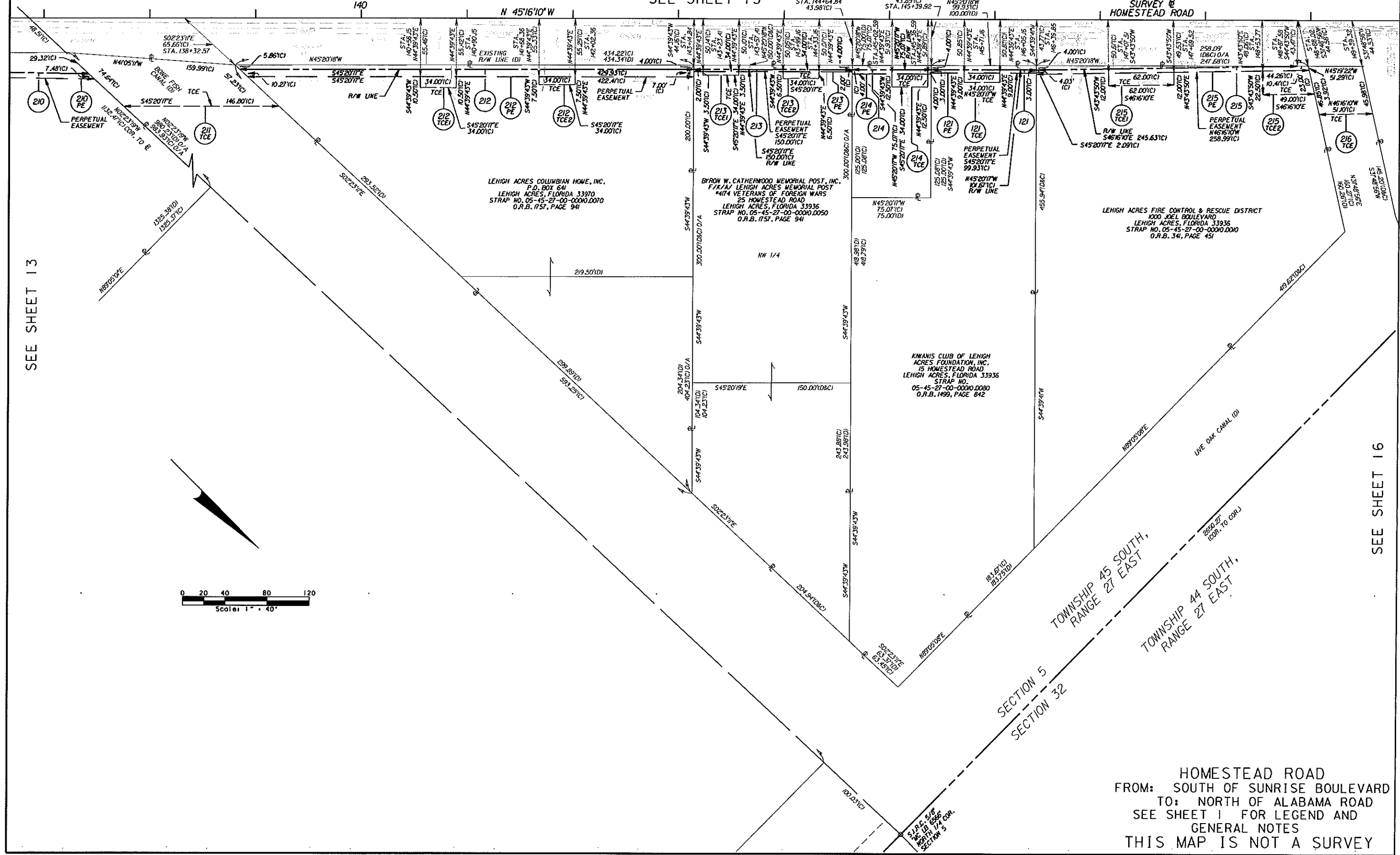
PUBLIC WORKS
LEE COUNTY
SOUTHWEST
FLORIDA
1500 MONROE STREET
FORT MYERS, FLORIDA 33901
1230 479-8908 www.lee-county.com/publicworks/details.htm

DEPARTMENT
of
TRANSPORTATION
RIGHT OF WAY MAP
DETAIL SHEET

SHEET
13 of
23
SHEETS

SECTION 5, TOWNSHIP 45 SOUTH, RANGE 27 EAST

SEE SHEET 15



SEE SHEET 13

SEE SHEET 16

HOMESTEAD ROAD
 FROM: SOUTH OF SUNRISE BOULEVARD
 TO: NORTH OF ALABAMA ROAD
 SEE SHEET 1 FOR LEGEND AND
 GENERAL NOTES
THIS MAP IS NOT A SURVEY

REVISIONS					
DATE	BY	DESCRIPTION	DATE	BY	DESCRIPTION

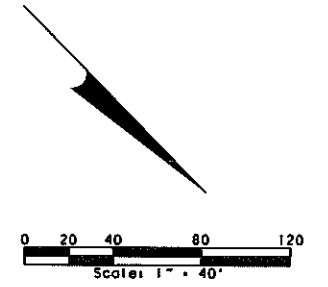
MKIM & CREED
10970 South Cleveland Avenue
 Fort Myers, FL 33907-2315
 Phone: (239) 275-8875
 Fax: (239) 275-7029

PUBLIC WORKS
 LEE COUNTY
 DEPARTMENT
SOUTHWEST
 OF
FLORIDA
1500 MONROE STREET
 FORT MYERS, FLORIDA 33901
 (239) 479-6900 www.lee-county.com/publicworks/060110a.htm

RIGHT OF WAY MAP
DETAIL SHEET

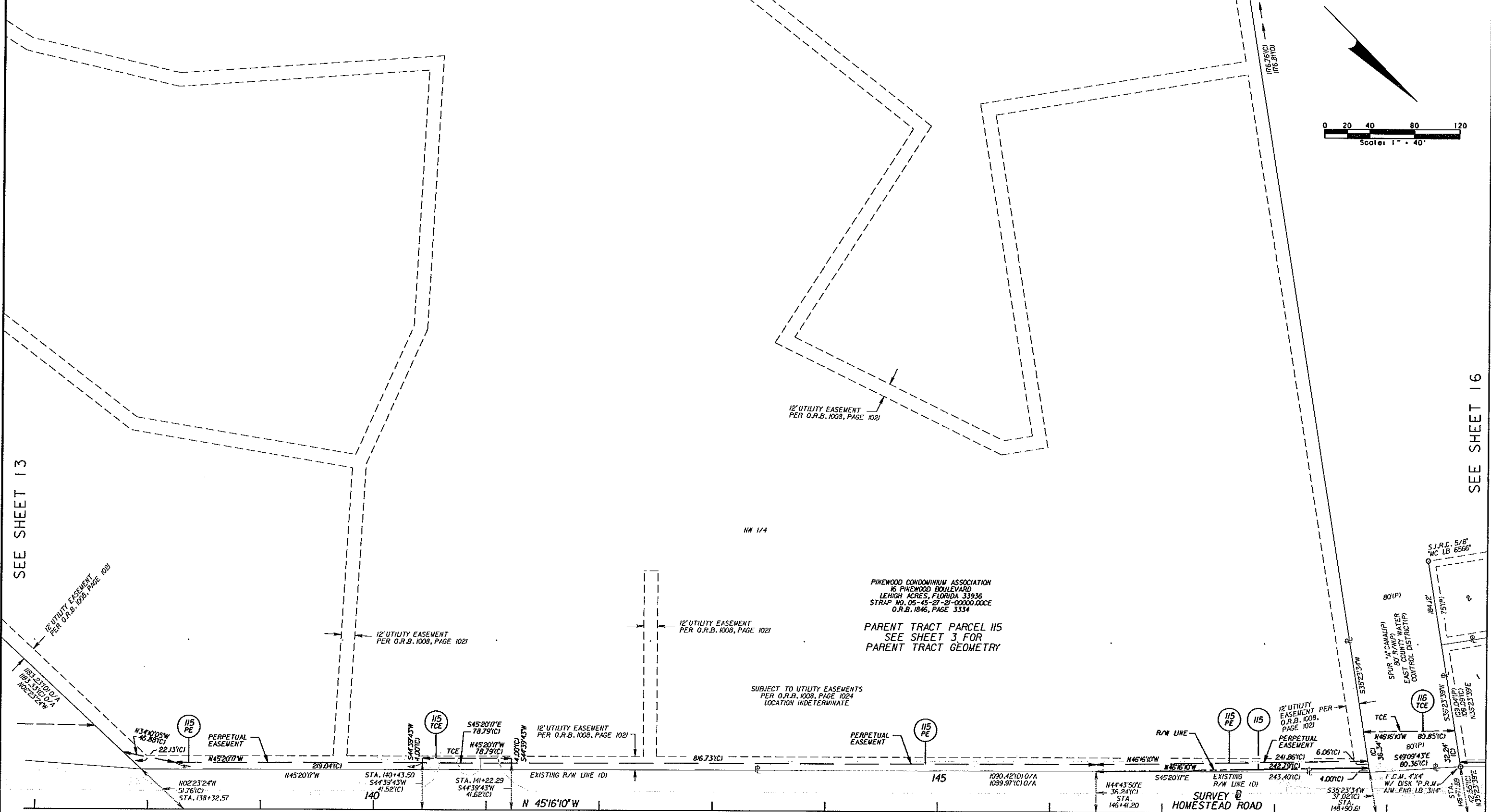
SHEET
 14 of
 23
 SHEETS

SECTION 5, TOWNSHIP 45 SOUTH, RANGE 27 EAST



SEE SHEET 13

SEE SHEET 16



SEE SHEET 14

HOMESTEAD ROAD
 FROM: SOUTH OF SUNRISE BOULEVARD
 TO: NORTH OF ALABAMA ROAD
 SEE SHEET 1 FOR LEGEND AND GENERAL NOTES
 THIS MAP IS NOT A SURVEY

REVISIONS					
DATE	BY	DESCRIPTION	DATE	BY	DESCRIPTION

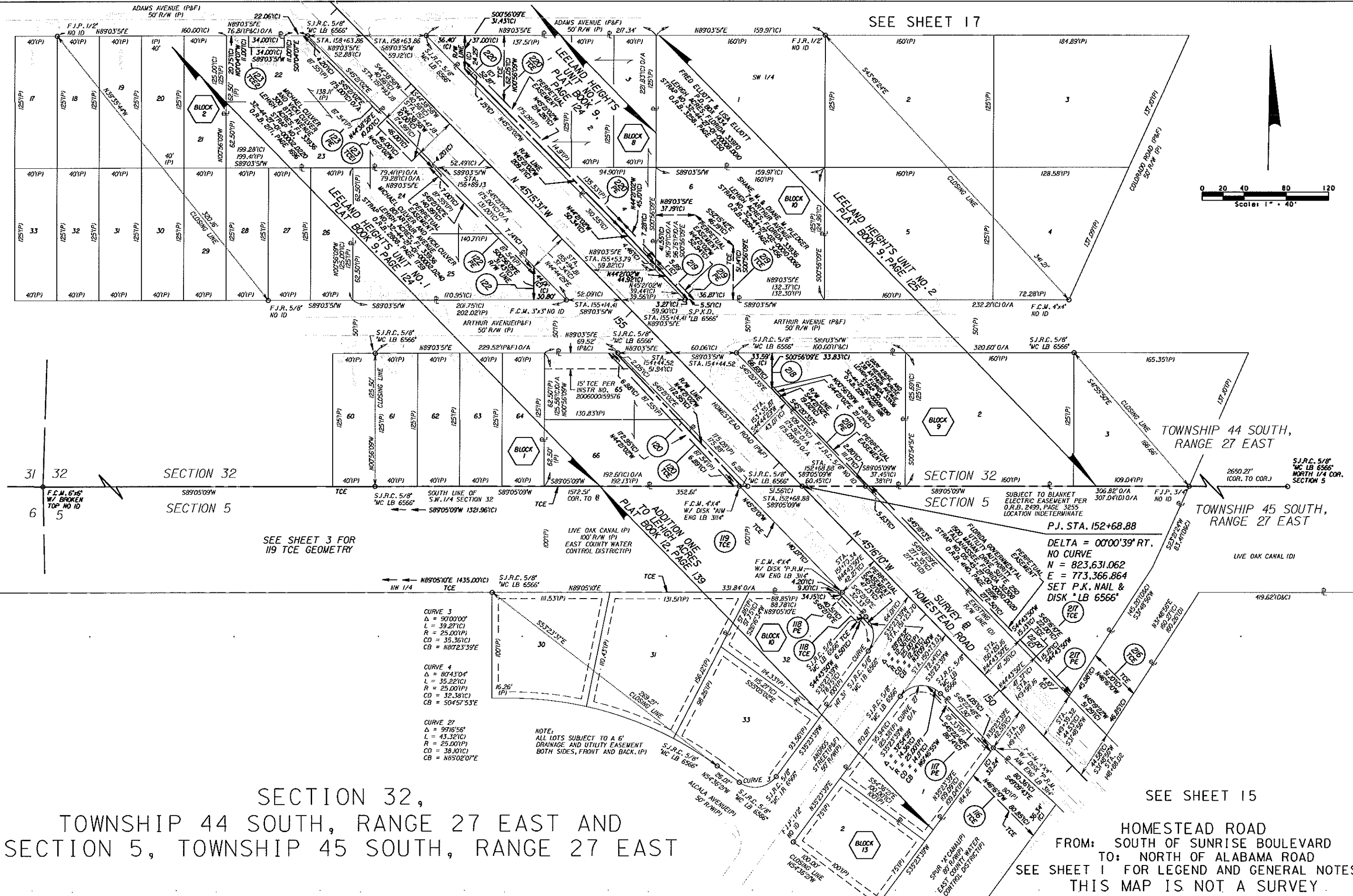
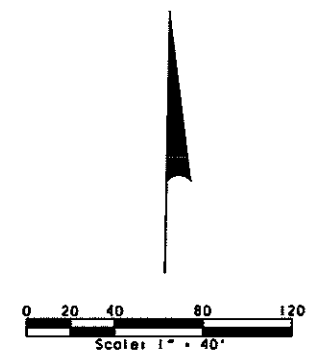
MCKIM & CREED
 10970 South Cleveland Avenue
 Fort Myers, FL 33907-2315
 Phone: (239) 275-8875
 Fax: (239) 275-7029
 Licensed Business No. 6566
 www.mckimcreed.com

PUBLIC WORKS
 LEE COUNTY
 DEPARTMENT of
 SOUTHWEST TRANSPORTATION
 FLORIDA
 1500 MONROE STREET FORT MYERS, FLORIDA 33981
 (239) 471-8900 www.lee-county.com/publicworks/dot1114.htm

RIGHT OF WAY MAP
 DETAIL SHEET

SHEET 15 of 23 SHEETS

SEE SHEET 17



SEE SHEET 3 FOR 119 TCE GEOMETRY

P.J. STA. 152+68.88
 DELTA = 00°00'39" RT.
 NO CURVE
 N = 823,631.062
 E = 773,366.864
 SET P.K. NAIL & DISK *LB 6566*

- CURVE 3
 $\Delta = 90^{\circ}00'00"$
 $L = 39.271(C)$
 $R = 25.001(P)$
 $CD = 35.361(C)$
 $CB = N89^{\circ}23'39"E$
- CURVE 4
 $\Delta = 80^{\circ}43'04"$
 $L = 35.221(C)$
 $R = 25.001(P)$
 $CD = 32.381(C)$
 $CB = S04^{\circ}57'53"E$
- CURVE 27
 $\Delta = 99^{\circ}16'56"$
 $L = 43.321(C)$
 $R = 25.001(P)$
 $CD = 38.101(C)$
 $CB = N85^{\circ}02'01"E$

NOTE:
 ALL LOTS SUBJECT TO A 6'
 DRAINAGE AND UTILITY EASEMENT
 BOTH SIDES, FRONT AND BACK. (P)

SECTION 32,
 TOWNSHIP 44 SOUTH, RANGE 27 EAST AND
 SECTION 5, TOWNSHIP 45 SOUTH, RANGE 27 EAST

SEE SHEET 15
 HOMESTEAD ROAD
 FROM: SOUTH OF SUNRISE BOULEVARD
 TO: NORTH OF ALABAMA ROAD
 SEE SHEET 1 FOR LEGEND AND GENERAL NOTES
 THIS MAP IS NOT A SURVEY.

REVISIONS					
DATE	BY	DESCRIPTION	DATE	BY	DESCRIPTION

MCKIM & CREED
 10970 South Cleveland Avenue
 Fort Myers, FL 33907-2315
 Phone: (239) 275-8875
 Fax: (239) 275-7029
 Licensed Business No. 6566
 www.mckimcreed.com

PUBLIC WORKS
 LEE COUNTY
 DEPARTMENT of SOUTHWEST FLORIDA TRANSPORTATION
 1500 HARBOUR STREET FORT MYERS, FLORIDA 33901
 4239 479-8908 www.lee-county.com/publicworks/dot/leeshm

RIGHT OF WAY MAP
 DETAIL SHEET

SHEET 16 of 23 SHEETS

SECTION 32,
TOWNSHIP 44 SOUTH, RANGE 27 EAST

SEE SHEET 18

SEE SHEET 19

CURVE 17
 $\Delta = 27^{\circ}51'31''$
 $L = 70.761(C)$
 $R = 145.001(C)$
 $CD = 70.081(C)$
 $CB = N23^{\circ}51'46''E$

CURVE 18
 $\Delta = 27^{\circ}41'01''$
 $L = 71.291(C)$
 $R = 147.001(C)$
 $CD = 70.591(C)$
 $CB = N23^{\circ}51'46''E$

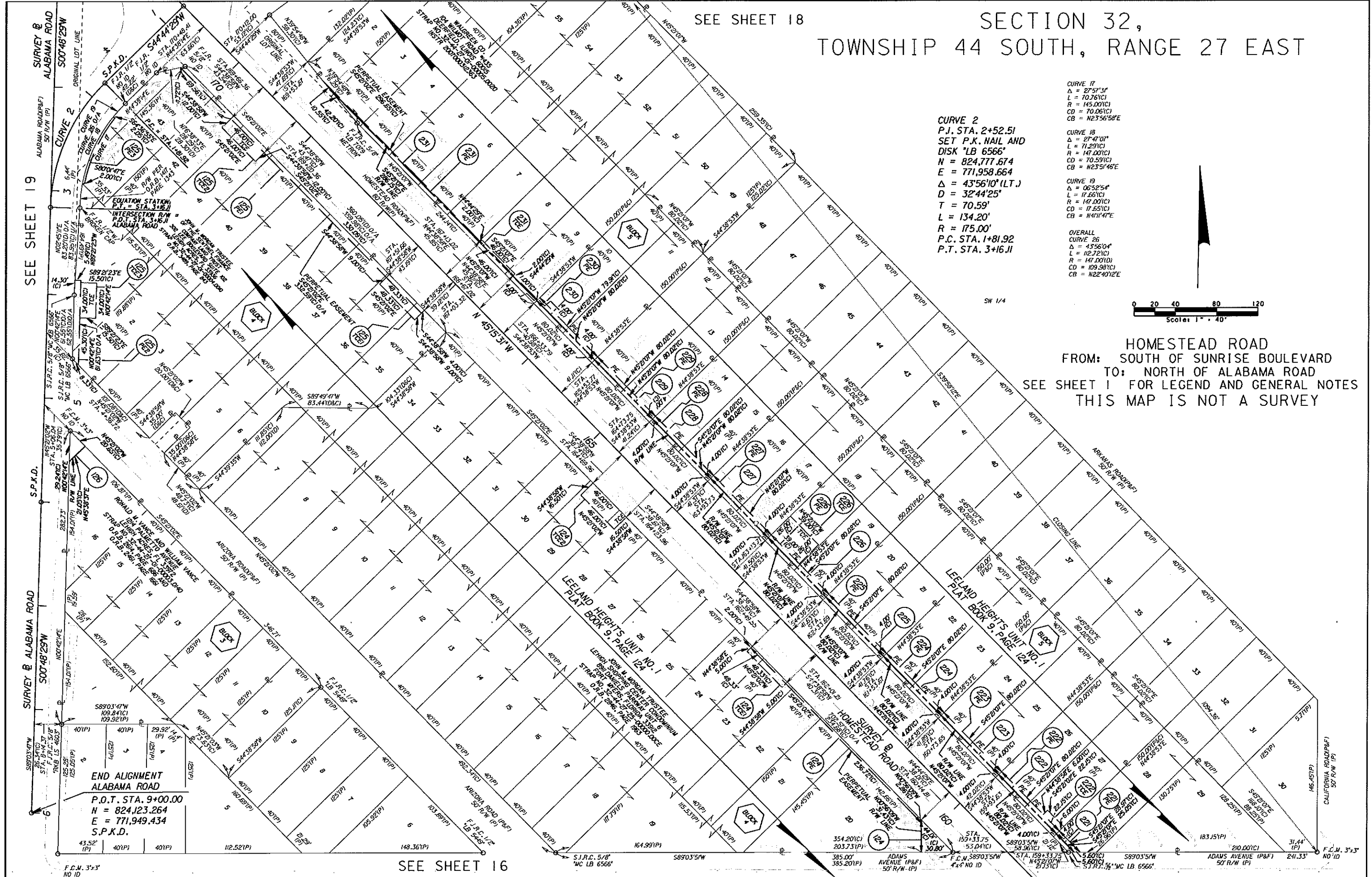
CURVE 19
 $\Delta = 06^{\circ}52'54''$
 $L = 17.661(C)$
 $R = 147.001(C)$
 $CD = 17.651(C)$
 $CB = N41^{\circ}14''E$

OVERALL
 CURVE 26
 $\Delta = 43^{\circ}56'04''$
 $L = 112.721(C)$
 $R = 147.001(C)$
 $CD = 103.281(C)$
 $CB = N22^{\circ}40'12''E$

CURVE 2
 P.J. STA. 2+52.51
 SET P.K. NAIL AND
 DISK "LB 6566"
 $N = 824,777.674$
 $E = 771,958.664$
 $\Delta = 43^{\circ}56'10''(LT.)$
 $D = 32^{\circ}44'25''$
 $T = 70.59'$
 $L = 134.20'$
 $R = 175.00'$
 P.C. STA. 1+81.92
 P.T. STA. 3+16.11



HOMESTEAD ROAD
 FROM: SOUTH OF SUNRISE BOULEVARD
 TO: NORTH OF ALABAMA ROAD
 SEE SHEET 1 FOR LEGEND AND GENERAL NOTES
 THIS MAP IS NOT A SURVEY



REVISIONS					
DATE	BY	DESCRIPTION	DATE	BY	DESCRIPTION

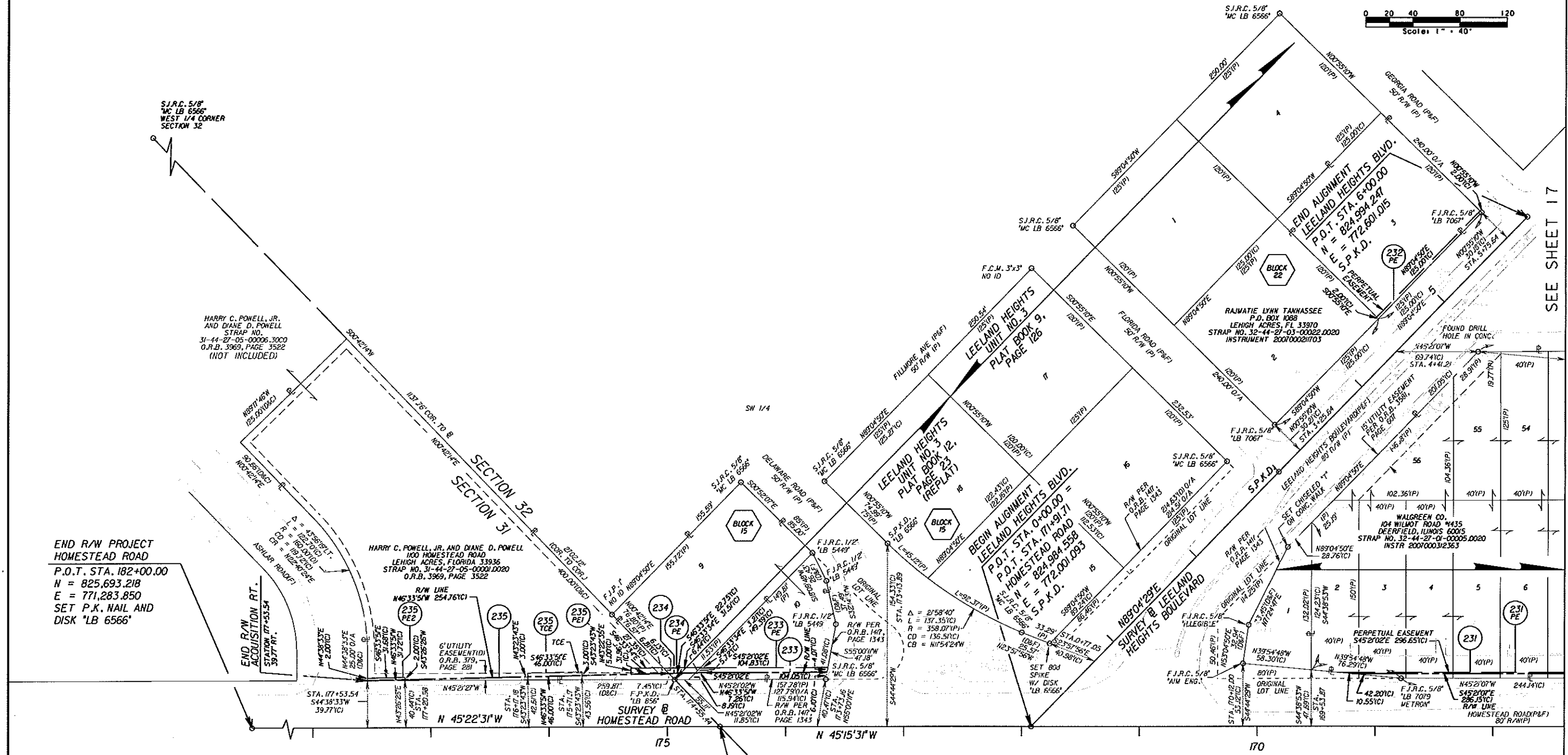
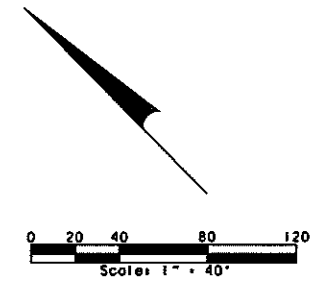
MCKIM & CREED
 10970 South Cleveland Avenue
 Fort Myers, FL 33907-2315
 Phone: (239) 275-8875
 Fax: (239) 275-7029
 Licensed Business No. 6566
 www.mckimcreed.com

PUBLIC WORKS
 LEE COUNTY
 DEPARTMENT of SOUTHWEST FLORIDA
 1508 MONROE STREET
 FORT MYERS, FLORIDA 33901
 (239) 479-6700 www.lee-county.com/publicworks/department.htm

RIGHT OF WAY MAP
 DETAIL SHEET

SHEET 17 of 23 SHEETS

SECTION 31 AND 32, TOWNSHIP 44 SOUTH, RANGE 27 EAST



END R/W PROJECT
HOMESTEAD ROAD
P.O.T. STA. 182+00.00
N = 825,693.218
E = 771,283.850
SET P.K. NAIL AND
DISK 'LB 6566'

HARRY C. POWELL, JR. AND DIANE D. POWELL
100 HOMESTEAD ROAD
LEHIGH ACRES, FLORIDA 33936
STRAP NO. 31-44-27-05-00001.D020
O.R.B. 3969, PAGE 3522

P.J. STA. 174+55.44
DELTA = 00°07'00" LT.
NO CURVE
N = 825,170.995
E = 771,813.772
SET P.K. NAIL AND
DISK 'LB 6566'

HOMESTEAD ROAD
FROM: SOUTH OF SUNRISE BOULEVARD
TO: NORTH OF ALABAMA ROAD
SEE SHEET 1 FOR LEGEND AND GENERAL NOTES
THIS MAP IS NOT A SURVEY

SEE SHEET 19

SEE SHEET 17

REVISIONS					
DATE	BY	DESCRIPTION	DATE	BY	DESCRIPTION

MCKIM & CREED
10970 South Cleveland Avenue
Fort Myers, FL 33907-2315
Phone: (239) 275-8875
Fax: (239) 275-7029
Licensed Business
No. 6566
www.mckimcreed.com

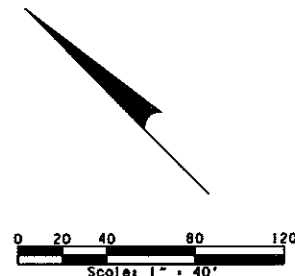
PUBLIC WORKS
LEE COUNTY
SOUTHWEST
FLORIDA
1500 HARROE STREET
FORT MYERS, FLORIDA 33981
1239 475-8988 www.lee-county.com/publicworks/dot/util.htm

DEPARTMENT
of
TRANSPORTATION

RIGHT OF WAY MAP
DETAIL SHEET

SHEET
18 of
23
SHEETS

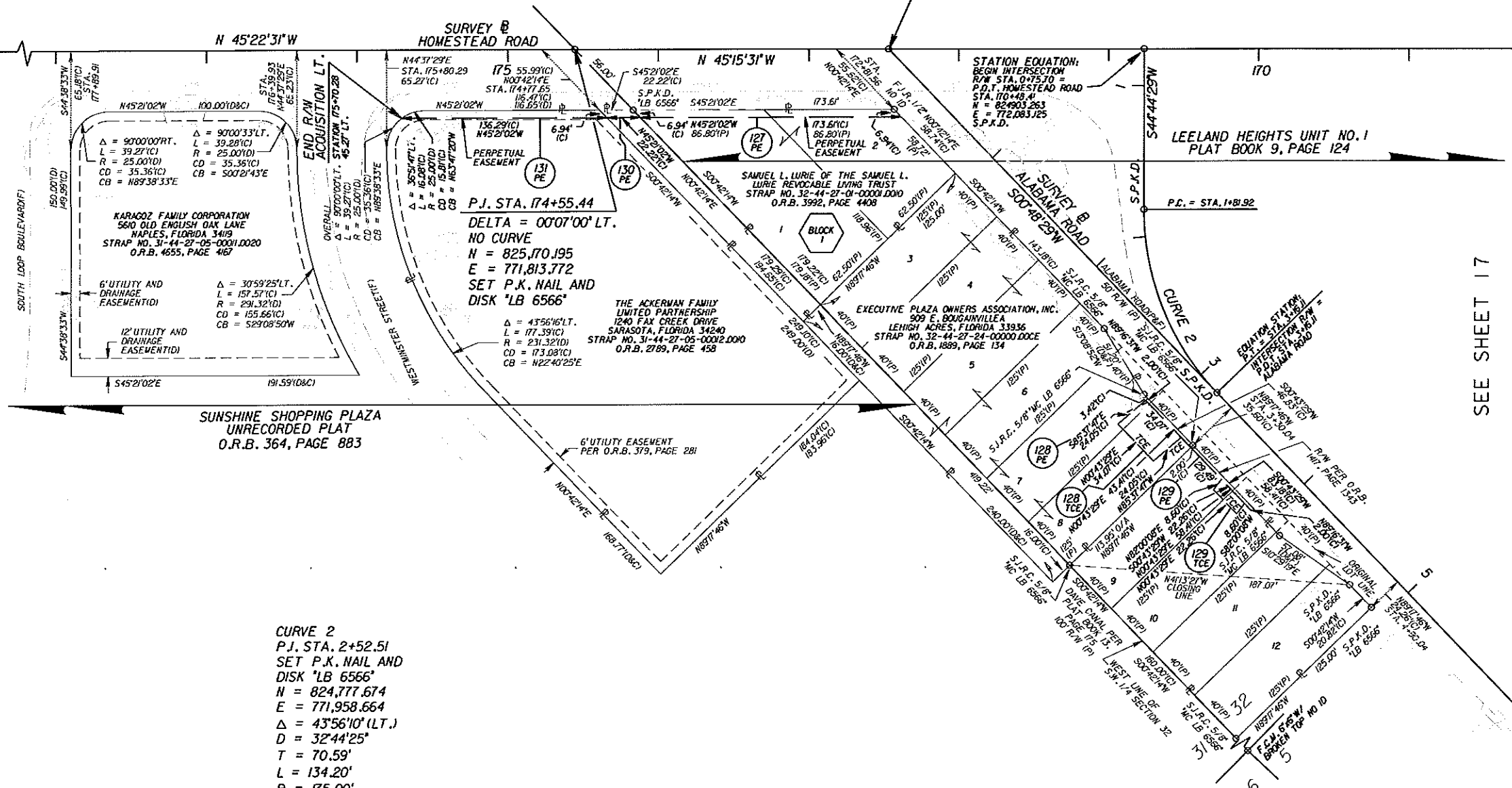
SECTION 31 AND 32, TOWNSHIP 44 SOUTH, RANGE 27 EAST



END R/W PROJECT
HOMESTEAD ROAD
P.O.T. STA. 182+00.00
N = 825,693.218
E = 771,283.850
SET P.K. NAIL AND
DISK 'LB 6566'

SEE SHEET 18

BEGIN ALIGNMENT
ALABAMA ROAD
P.O.T. STA. 0+00.00 =
P.O.T. STA. 172+46.57
HOMESTEAD ROAD
N = 825,023.174
E = 771,962.126
S.P.K.D.



SEE SHEET 17

CURVE 2
P.J. STA. 2+52.51
SET P.K. NAIL AND
DISK 'LB 6566'
N = 824,777.674
E = 771,958.664
 $\Delta = 43^{\circ}56'10''$ (LT.)
D = 32'44"25"
T = 70.59'
L = 134.20'
R = 175.00'
P.C. STA. 1+81.92
P.T. STA. 3+16.11

HOMESTEAD ROAD
FROM: SOUTH OF SUNRISE BOULEVARD
TO: NORTH OF ALABAMA ROAD
SEE SHEET 1 FOR LEGEND AND GENERAL NOTES
THIS MAP IS NOT A SURVEY

REVISIONS					
DATE	BY	DESCRIPTION	DATE	BY	DESCRIPTION

MKIM & CREED
10970 South Cleveland Avenue
Fort Myers, FL 33907-2315
Phone: (239) 275-8875
Fax: (239) 275-7029

Licensed Business
No. 6566
www.mkimcreed.com

PUBLIC WORKS
LEE COUNTY
SOUTHWEST
FLORIDA
1580 HARROE STREET
FORT MYERS, FLORIDA 33901
4230 479-8988 www.lee-county.com/publicworks/doctype.htm

DEPARTMENT
of
TRANSPORTATION

RIGHT OF WAY MAP
DETAIL SHEET

SHEET
19 of
23
SHEETS

TABLE

OF


OWNERSHIPS

PARCEL NO.	SHEET NO.	NAME	AREA TAKEN	REMAINDERS		COMMENTS	RECORDING DATA	REVISIONS		
				LEFT	RIGHT			REVISION	BY	DATE
100 PE	2,5,7	WILLIAM R. FLINT & NORA B. FLINT, TRUSTEES	4,612 S.F.	41.079 AC.						
101	6	OSCARBALL, LLC	4,896 S.F.	17,157 S.F.	0					
101 TCE	7		407 S.F.							
102	7	JAMES J. MOCARSKY AND KAREN MOCARSKY	12,985 S.F.	17,490 S.F.						
103	7	LEHIGH ACRES LODGE •2266 LOYAL ORDER OF THE MOOSE, INC.	23,106 S.F.	1.964 AC.	55 S.F.					
104	2,7,8	RONALD C. FLINT	4,517 S.F.	8.955 AC.						
104 PE	2,7,8		370 S.F.							
104 TCE	2,7		48 S.F.							
105	8	IGLESIA BAUTISTA EL BUEN PASTOR, INC.	968 S.F.	3.264 AC.						
105 PE	8		99 S.F.							
105 TCE	8		91 S.F.							
106 TCE	8	FLORIDA CONFERENCE ASSOCIATION OF THE SEVENTH-DAY ADVENTISTS	86 S.F.	3.267 AC.						
107 PE	3,9,10	TOUSA HOMES, INC.	5,754 S.F.	64.987 AC.						
107 TCE	3,9		138 S.F.							
108	3,10	PARK PLACE II LTD.	13,278 S.F.	5.696 AC.						
108 PE	3,10		2,581 S.F.							
108 TCE1	3,10		238 S.F.							
108 TCE2	3,10		933 S.F.							
109 PE	10 & 12	CALOOSA LAKES, LLC	1,387 S.F.	2.589 AC.						
110 TCE	12	CALOOSA LAKES HOMEOWNERS' ASSOCIATION, INC.	13,568 S.F.	N/A						
111 TCE	12	LEE COUNTY	50 S.F.	N/A						
112 PE	3,12,13	CALOOSA LAKES, LLC	8,624 S.F.	14.793 AC.						
112 TCE	3 & 12		2,445 S.F.							
113 PE	3 & 13	TOUSA HOMES, INC.	3,088 S.F.	11.310 AC.						
114 TCE	13	EAST COUNTY WATER CONTROL DISTRICT	5,035 S.F.	N/A						
115	3 & 15	PINEWOOD CONDOMINIUM ASSOCIATION	481 S.F.	35.933 AC.						
115 PE	3 & 15		6,713 S.F.							
115 TCE	3 & 15		315 S.F.							
116 TCE	15 & 16	EAST COUNTY WATER CONTROL DISTRICT	2,743 S.F.	N/A						
117 PE	16	GARY R. KRUSE	326 S.F.	11,528 S.F.						
118 PE	16	CLIFFORD A. AYERS	125 S.F.	11,119 S.F.						
118 TCE	16		243 S.F.							
119 TCE	3 & 16	EAST COUNTY WATER CONTROL DISTRICT	3,167 AC.	N/A						
120	16	THE LOT GUYS	523 S.F.	15,936 S.F.						
120 TCE	16		865 S.F.							
121	14	KIWANIS CLUB OF LEHIGH ACRES FOUNDATION, INC.	400 S.F.	1.917 AC.						
121 PE	14		300 S.F.							
121 TCE	14		306 S.F.							
122	16	MICHAEL CULVER AND VICKI CULVER	484 S.F.	17,080 S.F.						
122 PE	16		680 S.F.							

REVISIONS					
DATE	BY	DESCRIPTION	DATE	BY	DESCRIPTION



MKIM & CREED
 10970 South Cleveland Avenue
 Fort Myers, FL 33907-2315
 Phone: (239) 275-8875
 Fax: (239) 275-7029
 Licensed Business No. 6566
 www.mkimcreed.com



PUBLIC WORKS
 LEE COUNTY
 DEPARTMENT of
 SOUTHWEST FLORIDA TRANSPORTATION
 1500 HENRIE STREET FORT MYERS, FLORIDA 33901
 (239) 479-8700 www.lee-county.com/publicworks/dot/title.htm

HOMESTEAD ROAD
 RIGHT OF WAY MAP
 TABLE OF OWNERSHIPS

TABLE

OF

OWNERSHIPS

PARCEL NO.	SHEET NO.	NAME	AREA TAKEN	REMAINDERS		COMMENTS	RECORDING DATA	REVISIONS		
				LEFT	RIGHT			REVISION	BY	DATE
123 PE	16	MICHAEL CULVER AND VICKI CULVER	525 S.F.	17,256 S.F.						
123 TCE1	16		460 S.F.							
123 TCE2	16		374 S.F.							
124	17	JOHN M. MORGAN TRUSTEE	484 S.F.	3,766 AC.						
124 PE	17	LEHIGH SHOPPING CENTER CONDOMINIUM	471 S.F.							
124 TCE1	17		242 S.F.							
124 TCE2	17		759 S.F.							
125 PE1	17	JOHN M. MORGAN TRUSTEE OF THE SENTINEL	1,326 S.F.	1,905 AC.						
125 PE2	17	COMPANY LAND TRUST	469 S.F.							
125 PE3	17		142 S.F.							
125 TCE1	17		435 S.F.							
125 TCE2	17		552 S.F.							
125 TCE3	17		527 S.F.							
126	17	RONALD M. VANCE AND WILLIAM VANCE	217 S.F.	41,598 S.F.						
127 PE	19	SAMUEL L. LURIE OF THE SAMUEL LURIE REVOCABLE LIVING TRUST	867 S.F.	14,072 S.F.						
128 PE	19	EXECUTIVE PLAZA OWNERS ASSOCIATION, INC.	87 S.F.	33,047 S.F.						
128 TCE	19	REVOCABLE LIVING TRUST	818 S.F.							
129 PE	19	THE KEY CORPORATION	117 S.F.	18,769 S.F.						
129 TCE	19		189 S.F.							
130 PE	19	EAST COUNTY WATER CONTROL DISTRICT	111 S.F.	N/A						
131 PE	19	THE ACKERMAN FAMILY LIMITED PARTNERSHIP	646 S.F.	1,244 AC.						

REVISIONS					
DATE	BY	DESCRIPTION	DATE	BY	DESCRIPTION



MKIM & CREED
 10970 South Cleveland Avenue
 Fort Myers, FL 33907-2315
 Phone: (239) 275-8875
 Fax: (239) 275-7029
 Licensed Business No. 6566
 www.mckimcreed.com



PUBLIC WORKS
 LEE COUNTY
 SOUTHWEST FLORIDA
 DEPARTMENT of TRANSPORTATION
 1500 MONROE STREET
 FORT MYERS, FLORIDA 33901
 1235 479-8908 www.lee-county.com/publicworks/dot/leeh.htm

HOMESTEAD ROAD
 RIGHT OF WAY MAP
 TABLE OF OWNERSHIPS

SHEET
 21 of
 23
 SHEETS

TABLE

OF


OWNERSHIPS

PARCEL NO.	SHEET NO.	NAME	AREA TAKEN	REMAINDERS		COMMENTS	RECORDING DATA	REVISIONS		
				LEFT	RIGHT			REVISION	BY	DATE
200 A	2 8 5	THE VILLAGES AT HOMESTEAD, LLC	34,974 S.F.		134.464 AC.	ABBREVIATED PARENT TRACT				
200 B	2 8 6		27,607 S.F.							
200 PE	2 8 6		8,651 S.F.							
200 TCE	2 8 6		474 S.F.							
201	5 8 6	HARRY L. FLINT AND NORA B. FLINT	21,781 S.F.		2.487 AC.					
202 PE	6	LEHIGH ACRES LODGE •2266 LOYAL ORDER OF THE MOOSE, INC.	55 S.F.		SEE PARCEL 103					
203 A	6 8 8	CARLOS I. BRAVO AND MONICA A. MOELLER	4 S.F.		1.111 AC.					
203 B	6 8 8		3,940 S.F.							
203 PE	6 8 8		1,260 S.F.							
203 TCE	6 8 8		697 S.F.							
204 PE1	8 8 9	RLD HOMES, INC.	2,201 S.F.		14.819 AC.					
204 PE2	8 8 9		663 S.F.							
205	9	NATIONAL ORGINIZATION OF THE NEW APOSTOLIC CHURCH OF NORTH AMERICA	646 S.F.		2.808 AC.					
205 PE	9		2,279 S.F.							
206	9	EAST COUNTY WATER CONTROL DISTRICT	426 S.F.		N/A					
206 TCE	9		7,262 S.F.							
207	3,9,10	CANITA ANN FLINT PREVATT, JOHN WILFORD	35,642 S.F.		11.332 AC.					
207 PE	3,9,10	FLINT & ALECIA FLINT, ET ALII	8,522 S.F.							
207 TCE	3,9,10		455 S.F.							
208	3,10,11	VELTON H. FLINT, II ALSO KNOWN AS TONY FLINT, AND SUSAN LEE FLINT	7,785 S.F.		5.822 AC.					
208 PE	3,10,11		658 S.F.							
209	3 8 11	LEE COUNTY	2,686 S.F.	50 S.F.	44.372 AC.					
209 PE	3 8 11		417 S.F.							
209 TCE	3 8 11		5,137 S.F.							
210	3,11,13,14	LEE COUNTY	28,302 S.F.		32.965 AC.					
210 PE	3,11,13,14		9,787 S.F.							
210 TCE	3 8 13		3,808 S.F.							
211 TCE	14	EAST COUNTY WATER CONTROL DISTRICT	6,595 S.F.		N/A					
212	14	LEHIGH ACRES COLUMBIAN HOME, INC.	1,728 S.F.		1.975 AC.					
212 PE	14		2,982 S.F.							
212 TCE1	14		357 S.F.							
212 TCE2	14		255 S.F.							
213	14	BYRON W. CATHERWOOD MEMORIAL POST, INC.	600 S.F.		1.619 AC.					
213 PE	14	F/K/A/ LEHIGH ACRES MEMORIAL POST	300 S.F.							
213 TCE1	14	*4174 VETERANS OF FOREIGN WARS	119 S.F.							
213 TCE2	14		221 S.F.							
214	14	DARRY D. GRIEBEL	300 S.F.		9,090 S.F.					
214 PE	14		300 S.F.							
214 TCE	14		425 S.F.							
215	14	LEHIGH ACRES FIRE CONTROL & RESCUE DISTRICT	498 S.F.		1.989 AC.					
215 PE	14		1,034 S.F.							
215 TCE1	14		744 S.F.							
215 TCE2	14		1,049 S.F.							
216 TCE	14 8 16	EAST COUNTY WATER CONTROL DISTRICT	2,321 S.F.		N/A					
217 PE	16	FLORIDA GOVERNMENTAL UTILITY AUTHORITY	1,103 S.F.		31,295 S.F.					
217 TCE	16		333 S.F.							

REVISIONS					
DATE	BY	DESCRIPTION	DATE	BY	DESCRIPTION



MCKIM & CREED
 10970 South Cleveland Avenue
 Fort Myers, FL 33907-2315
 Phone: (239) 275-8875
 Fax: (239) 275-7029
 Licensed Business No. 6566
 www.mckimcreed.com



PUBLIC WORKS DEPARTMENT
 LEE COUNTY of SOUTHWEST FLORIDA
 1500 MONROE STREET FORT MYERS, FLORIDA 33901
 (239) 479-8700 www.lee-county.com/publicworks/dotitle.htm

HOMESTEAD ROAD
 RIGHT OF WAY MAP
 TABLE OF OWNERSHIPS

SHEET 22 of 23 SHEETS

TABLE

OF

OWNERSHIPS

PARCEL NO.	SHEET NO.	NAME	AREA TAKEN	REMAINDERS		COMMENTS	RECORDING DATA	REVISIONS		
				LEFT	RIGHT			REVISION	BY	DATE
218	16	GARY KRUSE AND CATHERINE KRUSE	579 S.F.		11,866 S.F.					
218 PE	16		261 S.F.							
219	16	SHANE M. & DIANE M. PLEDGER	115 S.F.		19,486 S.F.					
219 PE	16		196 S.F.							
219 TCE	16		4,640 S.F.							
220	16	FRED ELLIOTT AND LISA ELLIOTT	1,690 S.F.		22,416 S.F.					
220 PE	16		1,296 S.F.							
220 TCE	16		1,597 S.F.							
221	17	SALVADOR A. BONILLA	91 S.F.		14,101 S.F.					
221 PE	17		108 S.F.							
222	17	NYET Y. WONG & KIM K. WONG	320 S.F.		11,683 S.F.					
222 PE	17		320 S.F.							
222 TCE	17		133 S.F.							
223	17	THIEN TRUNG DO AND KIM HOUK TEH	320 S.F.		11,683 S.F.					
223 PE	17		320 S.F.							
224	17	MARGARET JOAN LUNDGREN	320 S.F.		11,683 S.F.					
224 PE	17		320 S.F.							
225	17	KIM HONG TEH	320 S.F.		11,683 S.F.					
225 PE	17		320 S.F.							
226	17	CHAD J. SINGLETON	320 S.F.		11,683 S.F.					
226 PE	17		320 S.F.							
226 TCE	17		1,014 S.F.							
227	17	MARK F. RICE	320 S.F.		11,683 S.F.					
227 PE	17		320 S.F.							
228	17	JAMES AGNESS AND LUCILLE AGNESS	320 S.F.		11,683 S.F.					
228 PE	17		320 S.F.							
229	17	JAMES AGNESS AND LUCILLE AGNESS	320 S.F.		11,683 S.F.					
229 PE	17		320 S.F.							
230	17	WILLIAM J. AGNESS, ET ALII	320 S.F.		11,683 S.F.					
230 PE	17		320 S.F.							
231	17 & 18	WALGREEN CO.	1,060 S.F.		1.988 AC.					
231 PE	17 & 18		290 S.F.							
231 TCE	17 & 18		92 S.F.							
232 PE	18	RAJMATIE LYNN TANNASSEE	250 S.F.		15,000 S.F.					
233	18	RODOLFO NARANJO JR. AND ROSA NARANJO	681 S.F.		6,340 S.F.					
233 PE	18		439 S.F.							
234	18	RODOLFO NARANJO JR. AND ROSA NARANJO	97 S.F.		13,191 S.F.					
234 PE	18		122 S.F.							
235	18	HARRY C. POWELL, JR. AND DIANE D. POWELL	697 S.F.		1.060 AC.					
235 PE1	18		148 S.F.							
235 PE2	18		63 S.F.							
235 TCE	18		138 S.F.							

REVISIONS					
DATE	BY	DESCRIPTION	DATE	BY	DESCRIPTION



MKIM & CREED
 10970 South Cleveland Avenue
 Fort Myers, FL 33907-2315
 Phone: (239) 275-8875
 Fax: (239) 275-7029
 www.mckimcreed.com



PUBLIC WORKS
 LEE COUNTY
 DEPARTMENT
 of
 SOUTHWEST TRANSPORTATION
 FLORIDA
 1500 HONORE STREET
 FORT MYERS, FLORIDA 33901
 (239) 479-8900 www.lee-county.com/publicworks/dswt.htm

**HOMESTEAD ROAD
 RIGHT OF WAY MAP
 TABLE OF OWNERSHIPS**

SHEET
 23 of
 23
 SHEETS