

**CONTRACT PLANS COMPONENTS**

ROADWAY PLANS  
SIGNING AND PAVEMENT MARKING PLANS  
LIGHTING PLANS

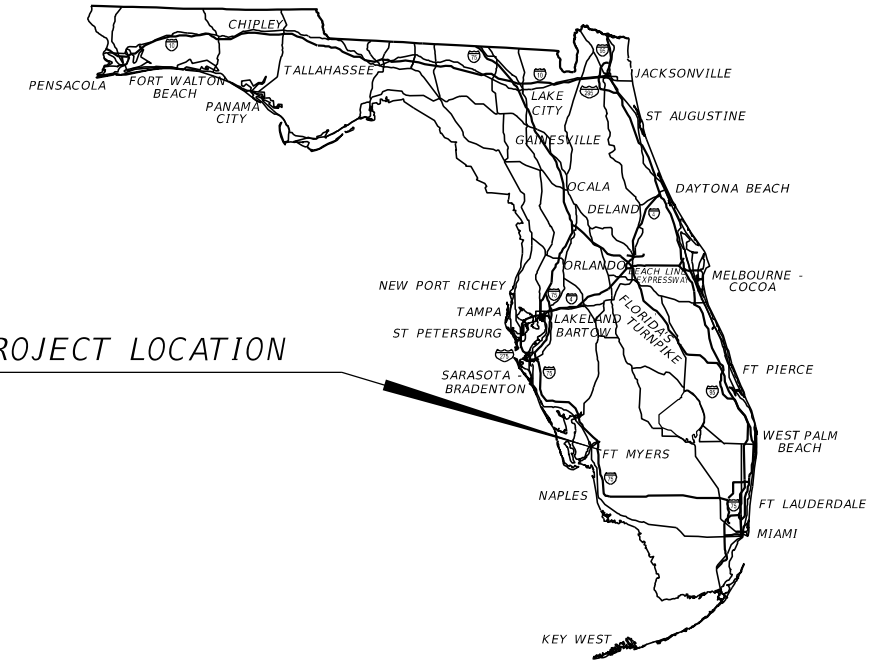
**LEE COUNTY  
DEPARTMENT OF TRANSPORTATION**

**LIGHTING PLANS**

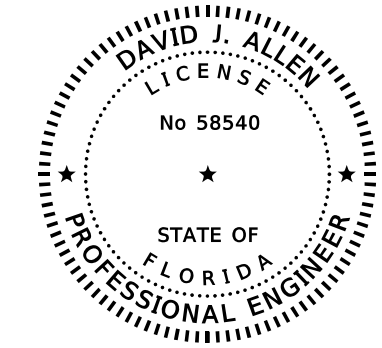
**GATEWAY BOULEVARD AT GRIFFIN DRIVE  
INTERSECTION CONTROL (ROUNDAABOUT)**

**INDEX OF LIGHTING PLANS**

SHEET NO.	SHEET DESCRIPTION
L-1	KEY SHEET
L-2	TABULATION OF QUANTITIES
L-3 THRU L-4	GENERAL NOTES
L-5	LIGHTING DATA TABLE AND LEGEND
L-6 THRU L-10	LIGHTING PLAN
L-11	PANEL SCHEDULE
L-12	STREETLIGHT POLE WIRING DETAIL



PROJECT LOCATION



THIS ITEM HAS BEEN DIGITALLY  
SIGNED AND SEALED BY

ON THE DATE ADJACENT TO THE SEAL  
PRINTED COPIES OF THIS DOCUMENT ARE  
NOT CONSIDERED SIGNED AND SEALED AND  
THE SIGNATURE MUST BE VERIFIED  
ON ANY ELECTRONIC COPIES.

100% PLANS  
DECEMBER 2020  
(NOT FOR CONSTRUCTION)

**LIGHTING PLANS  
ENGINEER OF RECORD:**

DAVID ALLEN, P.E.  
P.E. NO. 58540  
CARDNO, INC.  
3905 CRESCENT PARK DR.  
RIVERVIEW FL. 33578  
(813) 257-0005  
CERTIFICATE OF AUTHORIZATION NO.: 29915

**COUNTY PROJECT MANAGER:**

Alejandro J. Slaibe, P.E.

CIP NO.	FISCAL YEAR	SHEET NO.
200672	20	L-1


THE OFFICIAL RECORD OF THIS SHEET IS THE ELECTRONIC FILE DIGITALLY SIGNED AND SEALED UNDER RULE 61G15-23.004, F.A.C.

**TABULATION OF QUANTITIES**

PAY ITEM NO.	DESCRIPTION	UNIT	SHEET NUMBERS												TOTAL THIS SHEET		GRAND TOTAL		
			L-6		L-7		L-8		L-9		L-10		PLAN	FINAL	PLAN	FINAL			
			PLAN	FINAL	PLAN	FINAL	PLAN	FINAL	PLAN	FINAL	PLAN	FINAL							
630-2-11	CONDUIT, FURNISH & INSTALL, OPEN TRENCH	LF			215											215		215	
630-2-12	CONDUIT, FURNISH & INSTALL, DIRECTIONAL BORE	LF			1470		465		200		435					2570		2570	
635-2-11	PULL & SPLICE BOX, F&I	EA																13	
	LCDOT PULL BOX, 17" X 30" COVER SIZE	EA			8											8			
	GS PULL BOX, 13" X 24" COVER SIZE	EA	1				1		2		1					5			
641-2-12	PRESTRESSED CONCRETE POLE, F&I, TYPE P-II SERVICE POLE (12')	EA			2											2		2	
715-1-12	LIGHTING CONDUCTORS, F&I, INSULATED, NO 8 TO NO 6	LF			7217		1635		696		1401					10949		10949	
715-1-60	LIGHTING CONDUCTORS, REMOVE & DISPOSE, CONTRACTOR OWNS	LF	360		1050		1395				1188					3993		3993	
715-4-12	LIGHT POLE COMPLETE, FURNISH & INSTALL STANDARD POLE STANDARD FOUNDATION, 35' MOUNTING HEIGHT	EA			10		5		1		3					19		19	
715-4-70	LIGHT POLE COMPLETE, REMOVE POLE AND FOUNDATION	EA			3		2		2		1					8		8	
715-7-11	LOAD CENTER, F&I, SECONDARY VOLTAGE	EA			1											1		1	
715-500-1	POLE CABLE DISTRIBUTION SYSTEM, FURNISH AND INSTALL, CONVENTIONAL	EA			10		5		1		3					19		19	

**PAY ITEM FOOTNOTES**

- PAY ITEM 630-2-11:**  
THE CONDUITS SHALL BE FITTED WITH BELL ENDS OR EQUIVALENT FITTINGS PRIOR TO THE PULLING OF ANY WIRE INTO THE CONDUITS. SEE LEE COUNTY SIGNAL AND LIGHTING SPECIFICATIONS FOR ADDITIONAL INFORMATION.
- PAY ITEM 630-2-12:**  
THE CONDUITS SHALL BE FITTED WITH BELL ENDS OR EQUIVALENT FITTINGS PRIOR TO THE PULLING OF ANY WIRE INTO THE CONDUITS. ALL DIRECTIONAL BORES SHALL INCLUDE A SPARE CONDUIT, WHERE SPECIFIED, CONTAINING A PULL WIRE AND SEALED WITH A WATER TIGHT CAP. SEE LEE COUNTY SIGNAL AND LIGHTING SPECIFICATIONS FOR ADDITIONAL INFORMATION.
- PAY ITEM 635-2-11:**  
PULL BOXES DESIGNATED WITH (LCDOT) SHALL BE FOR THE PROPOSED LIGHTING SYSTEM MAINTAINED BY LEE COUNTY. THESE PULL BOXES SHALL FOLLOW LEE COUNTY SIGNAL AND LIGHTING SPECIFICATIONS FOR MATERIAL AND INSTALATION REQUIREMENTS.  
  
PULL BOXES DESIGNATED WITH (GS) SHALL BE FOR THE ADJUSTED GATEWAY SERVICE COMMUNITY DEVELOPMENT DISTRICT EXISTING LIGHT SYSTEM. THESE PULL BOXES SHALL HAVE "GSCD STREET LIGHTING" STAMPED IN RAISED LETTERING ON THE PULL BOX COVERS. THE PULL BOX AND COVER SHALL BE CONCRETE WITH THE SIZE OF 12" X 24" AND 12" DEEP.  
  
SEE POLE DATA AND LEGEND SHEET FOR DESIGNATED PULL BOX SYMBOLS.
- PAY ITEM 641-2-12:**  
CONCRETE SERVICE POLES FOR THE POWER SERVICE/LOAD CENTER ASSEMBLY SHALL BE 12 FEET.
- PAY ITEM 715-1-60:**  
AT LOCATIONS WHERE EXISTING LIGHTING CONDUCTORS ARE TO BE REMOVED, THE CONDUIT SHALL REMAIN BELOW GRADE AND BE FILLED WITH GROUT. ALL CONDUIT REMAINING ABOVE FINAL GRADE SHALL BE CUT BELOW GRADE. THIS IS COVERED UNDER THIS PAY ITEM.
- PAY ITEM 715-4-12:**  
THIS PAY ITEM INCLUDES THE LUMINAIRE OPTIONAL 7 PIN PHOTOCONTROL RECEPTACLE AND THE COST OF FURNISHING AND INSTALLING THE FIELD INSTALLED HOUSESIDE SHIELD (ATB2HS40) AND ROADSIDE SHIELD ACCESSORIES (ATB2SS40) PER EACH LUMINAIRE. THE HOUSE SIDE SHIELDS SHALL BE INSTALLED ON ALL LUMINAIRES. THE CONTRACTOR SHALL INSTALL THE ROADSIDE SHIELDS ONLY ON SPECIFIED LUMINAIRES AS DIRECTED BY THE ENGINEER TO HELP REDUCE GLARE TO LOCAL BUSINESSES AND RESIDENTS. HOWEVER, THE LIGHTING CRITERIA AND UNIFORMITY RATIO MUST STILL BE MET IF USING THE ROADSIDE SHIELDS. ALL SHIELDS NOT FIELD INSTALLED SHALL BE DELIVERED TO THE LOCATION DETERMINED BY LEE COUNTY DEPARTMENT OF TRANSPORTATION. SEE POLE DATA AND LEGEND FOR THE SPECIFICATIONS FOR THE TWO LUMINAIRES.  
  
STREET LIGHT POLE ASSEMBLIES SHALL BE GROUNDED USING A #6 GREEN AWG WIRE FROM GROUND TO THE TRANSFORMER BASE GROUND TERMINAL LUG. ALL STREET LIGHT POLES SHALL HAVE A MINIMUM OF TWO (2), TEN (10) FOOT LENGTH 5/8" COPPER CLAD GROUND ROD SHALL BE INSTALLED, AND HAVE A GROUND RESISTANCE READING OF 15 OHMS OR LESS.  
  
FDOT MAINTENANCE PADS ARE NOT NEEDED FOR THIS PROJECT AND WILL NOT BE INCLUDED UNDER THIS PAY ITEM UNIT COST.
- PAY ITEM 715-4-70:**  
INCLUDES THE REMOVAL OF POLE, BRACKET ARM, LUMINAIRE, TRANSFORMER BASE, FOUNDATION, ASSOCIATED WIRING AND ALL RESTORATION.
- PAY ITEM 715-7-11:**  
THE LOAD CENTER ASSEMBLY SHALL INCLUDE THE POWER SERVICE COMPONENTS. THIS PAY ITEM SHALL INCLUDE BUT NOT LIMITED TO THE COST OF REQUIRED THE POWER SERVICE ASSEMBLY COMPONENTS AND ALL MATERIAL AND HARDWARE FOR A COMPLETE LOAD CENTER. ABOVE GROUND CONDUIT TO THE SERVICE AND LOAD CENTER COMPONENTS SHALL BE INCLUDED UNDER THIS PAY ITEM. THE ABOVE GROUND CONDUIT SHALL BE RIGID GALVANIZED STEEL. THE CONCRETE SERVICE POLES FOR THE ASSEMBLY WILL BE PAID SEPERATELY. SEE LEE COUNTY SPECIFICATIONS REFERED TO IN THE GENERAL NOTES FOR THE MATERIAL AND INSTALLATION SPECIFICATIONS. THE LOAD CENTER SHALL BE A THREE WIRE, SINGLE PHASE 120V/240V POWER SERVICE ASSEMBLY.
- PAY ITEM 715-500-1:**  
ALL LIGHT POLES SHALL HAVE A POLE CABLE DISTRIBUTION SYSTEM. THIS PAY ITEM IS FOR ALL ITEMS SPECIFIED IN THE LEE COUNTY DEPARTMENT OF TRANSPORTATION PLAN SPECIFICATIONS FOR SIGNAL AND STREET LIGHTING.

REVISIONS				DAVID J. ALLEN, PE P.E. NO.: 58540 CARDNO 3905 CRESCENT PARK DRIVE RIVERVIEW, FL 33578 CERTIFICATE OF AUTHORIZATION: 29915		GATEWAY BOULEVARD AT GRIFFIN DRIVE INTERSECTION CONTROL (ROUNDABOUT)	COUNTY PROJECT NO. 200672	SHT. NO. L-2
DATE	DESCRIPTION	DATE	DESCRIPTION					

THE OFFICIAL RECORD OF THIS SHEET IS THE ELECTRONIC FILE DIGITALLY SIGNED AND SEALED UNDER RULE 61G15-23.004, F.A.C.

# ROADWAY LIGHTING GENERAL NOTES

1. ADHERE TO REQUIREMENTS IN THE JANUARY 2021 "LEE COUNTY DEPARTMENT OF TRANSPORTATION PLAN SPECIFICATIONS FOR SIGNAL & STREET LIGHTING". THERE ARE TWO LIGHTING SECTIONS UNDER THE SPECIFICATIONS, THE CONTRACTOR SHALL FOLLOW THE INTERSECTION LIGHTING SECTION. CONTACT LEE COUNTY DEPARTMENT OF TRANSPORTATION (LCDOT) TO OBTAIN THE SPECIFICATIONS AND FOR ANY QUESTIONS REGARDING EQUIPMENT OR INSTALLATION REQUIREMENTS. FOLLOW THE FDOT GOVERNING STANDARDS AND SPECIFICATIONS FOR ALL ITEMS NOT COVERED BY THE LEE COUNTY SPECIFICATIONS.
2. SPARE CONDUIT AT PAVEMENT CROSSINGS SHALL BE CAPPED AT BOTH ENDS.
3. PRIOR TO ANY EQUIPMENT ORDER, THE CONTRACTOR SHALL SUBMIT, FOR APPROVAL, EQUIPMENT SPECIFICATION OR DESIGN DATA FOR ALL MATERIAL PROPOSED FOR THE PROJECT. THE SHOP DRAWINGS AND DESIGN DATA FOR ROADWAY LIGHTING EQUIPMENT SHALL BE SUBMITTED TO THE ENGINEER OF RECORD IN ACCORDANCE WITH THE SPECIFICATIONS.
4. PROVIDE SHOP DRAWINGS OF THE PHOTOMETRIC CALCULATIONS FOR LUMINAIRES OTHER THAN THE BASIS OF DESIGN. THE LUMINAIRE BASIS OF DESIGN IS THE FOLLOWING:
  - AMERICAN ELECTRIC LIGHTING AUTOBAHN ATB2 88 WATT LED LUMINAIRE 4000K COLOR TEMPERATURE WITH TYPE III DISTRIBUTION AND HOUSESIDE SHIELD. PHOTOMETRIC CURVE IS ATB2\_40BLEDE70\_XXXXX\_R3\_HS.
  - AMERICAN ELECTRIC LIGHTING AUTOBAHN ATB2 133 WATT LED LUMINAIRE 4000K COLOR TEMPERATURE WITH TYPE III DISTRIBUTION AND HOUSESIDE SHIELD. PHOTOMETRIC CURVE IS ATB2\_40BLEDE10\_XXXXX\_R3\_HS.
 SEE POLE DATA AND LEGEND SHEET AND PAY ITEM FOOTNOTES FOR ADDITIONAL INFORMATION. MEET ALL PHOTOMETRIC REQUIREMENTS IN THE CONTRACT DOCUMENTS.
5. THE LOCATIONS OF EXISTING UTILITIES, AS SHOWN ON THESE PLANS, ARE APPROXIMATE AND BASED ON THE INFORMATION FURNISHED TO THE ENGINEER BY THE UTILITY OWNER(S) AND ARE SHOWN AS NOTICE TO THE CONTRACTOR THAT UNDERGROUND UTILITIES EXIST. THE CONTRACTOR SHALL NOTIFY THE UTILITY COMPANY OWNER(S) FOR LOCATION AND STAKING OF UNDERGROUND FACILITIES BEFORE EXCAVATING.
6. BEFORE EXCAVATING, IT IS REQUIRED THAT NOTICE BE GIVEN TO SUNSHINE STATE ONE CALL OF FLORIDA, INC. (SSOCOF) AT 1-800-432-4770 A MINIMUM OF TWO (2) FULL BUSINESS DAYS BEFORE WORK BEGINS. NOT ALL UTILITY COMPANIES ARE MEMBERS OF SSOCOF.
7. THE LOCATION OF THE CONDUITS AND JUNCTION BOXES ARE DIAGRAMMATIC ONLY AND MAY BE SHIFTED WITHIN THE RIGHT-OF-WAY BY THE CONTRACTOR WITH APPROVAL FROM THE ENGINEER TO ACCOMMODATE LOCAL CONDITIONS AND EXISTING UTILITY LOCATIONS. LIGHT POLE LOCATIONS CAN BE ADJUSTED WITH AN APPROVAL FROM THE ENGINEER. ALUMINUM POLES, LUMINAIRES AND BASES SHALL BE FABRICATED IN ACCORDANCE WITH AASHTO'S "STANDARD SPECIFICATIONS FOR STRUCTURAL SUPPORTS FOR HIGHWAY SIGNS, LUMINAIRES, AND TRAFFIC SIGNALS", AND SHALL HAVE BEEN TESTED BY FHWA APPROVED METHODS (LATEST EDITION). CERTIFICATION FOR TESTS SHALL BE SUBMITTED WITH THE SHOP DRAWINGS.
8. ALL ELECTRICAL WORK SHALL MEET ALL REQUIREMENTS OF THE LATEST EDITIONS OF THE NATIONAL ELECTRICAL CODE (NEC), THE NATIONAL ELECTRICAL SAFETY CODE (NEC) AND THE STATE OF FLORIDA DEPARTMENT OF TRANSPORTATION STANDARD SPECIFICATIONS FOR ROAD AND BRIDGE CONSTRUCTION. ALL COMPONENTS SHALL BE PROPERLY GROUNDED AND BONDED PER NEC REQUIREMENTS.
9. IN ACCORDANCE WITH NEC, IDENTIFY ALL CIRCUITS AND EQUIPMENT WITH "LAMACOID TAGS". INSTALL SIMILAR TAGS OF STAINLESS STEEL IDENTIFYING THE CIRCUIT FOR EACH LUMINAIRE AT ACCESS HAND HOLE FOR EACH POLE.
10. WIRE PULLING INSTRUCTIONS: CONNECT PULLING DEVICES TO COPPER WIRE AND NOT TO JACKET AND MEET MANUFACTURER'S REQUIREMENTS. USE PULLING COMPOUND PER MANUFACTURER'S REQUIREMENTS. ALL BENDS SHALL NOT BE LESS THAN RECOMMENDED BY THE NEC OR NESC FOR CABLE USED.
11. NO SCREW TYPE BASE FOUNDATIONS SHALL BE USED.
12. AT LOCATIONS WHERE UNDERGROUND UTILITIES ARE WITHIN TWO FEET OF THE LIGHT POLE FOOTER OR CONDUIT RUN, THE CONTRACTOR SHALL HAND DIG THE FIRST FOUR FEET OF THE HOLE FOR THE POLE FOUNDATION AND CONDUIT RUN.
13. THE NEW LIGHTING SYSTEM CONDUIT SHALL GO STRAIGHT TO THE PROPOSED LIGHT POLE FOUNDATION. ALL SPLICES SHALL BE DONE IN THE TRANSFORMER BASES.
14. ALL CONDUIT TRENCHES SHALL BE BACKFILLED COMPLETELY TO PROVIDE SAFE CROSSING BY THE END OF EACH WORKING DAY OR WHENEVER THE WORK ZONE BECOMES INACTIVE. THE CONTRACTOR SHALL NOT OPEN ANY AREA THAT CANNOT BE BACKFILLED IN THE SAME WORK PERIOD.
15. THE LIGHTING SYSTEM WILL BE MAINTAINED BY LEE COUNTY DEPARTMENT OF TRANSPORTATION (LCDOT) UPON FINAL ACCEPTANCE.
16. THE CONTRACTOR SHALL MAINTAIN ACCESS TO ALL SIDE STREETS, PRIVATE AND COMMERCIAL DRIVEWAYS AT ALL TIMES DURING THE CONSTRUCTION OPERATION.
17. UPON PASSING THE FINAL INSPECTION, SEND A WRITTEN REQUEST TO THE FOLLOWING:
 

LEE COUNTY DEPARTMENT OF TRANSPORTATION  
TRAFFIC ENGINEERING DEPARTMENT  
1500 MONROE STREET  
FORT MYERS, FLORIDA 33901  
PHONE: 239-533-8580

AND

LEE COUNTY DEPARTMENT OF TRANSPORTATION  
TRAFFIC ENGINEERING DEPARTMENT  
1500 MONROE STREET  
FORT MYERS, FLORIDA 33901  
PHONE: 239-533-8580
18. WHEN REQUESTING TO TRANSFER MAINTENANCE FROM THE CONTRACTOR TO LCDOT. LCDOT WILL RESPOND WITHIN FIVE (5) WORKING DAYS TO ESTABLISH TIME TABLE FOR THE TRANSFER OF MAINTENANCE RESPONSIBILITY.
19. WHEN CONSTRUCTION IS COMPLETE, A HARD COPY SET OF "AS-BUILT" PLANS IN ADDITION TO AN ELECTRONIC COPY (PDF) IS TO BE SUBMITTED TO BOTH:
 

BILL SHAW  
GATEWAY SERVICE COMMUNITY  
DEVELOPMENT DISTRICT  
13240 GRIFFIN DRIVE  
FORT MYERS, FLORIDA 33913  
PHONE: 239-561-1313


AND

LEE COUNTY DEPARTMENT OF TRANSPORTATION  
TRAFFIC ENGINEERING DEPARTMENT  
1500 MONROE STREET  
FORT MYERS, FLORIDA 33901  
PHONE: 239-533-8580
20. LIGHT POLES AND PULL BOXES SHALL NOT BE LOCATED IN DRAINAGE SWALES, DITCHES, WETLANDS, DRIVEWAYS, SURFACE WATER, PAVED SHOULDERS OR PEDESTRIAN RAMPS.
21. THE CONTRACTOR SHALL BE AWARE THAT NO TEST BORINGS WERE MADE WHERE CONDUIT OR PULL BOXES ARE TO BE INSTALLED. THE CONTRACTOR SHALL BE RESPONSIBLE FOR EXAMINING THE JOB SITE CONDITIONS BEFORE SUBMITTING BID PROPOSALS.
22. ALL EXCESS DIRT AND DEBRIS EXCAVATED FROM POLE FOOTER SHALL BE REMOVED DAILY TO AREAS APPROVED BY THE ENGINEER AND PAID FOR UNDER PAY ITEM 715-4-12.
23. CONTACT GATEWAY SERVICE COMMUNITY DEVELOPMENT DISTRICT A MINIMUM OF TWO (2) WEEKS PRIOR TO ANY WORK ON THE EXISTING LIGHTING SYSTEM. CONTACT INFORMATION IS AS FOLLOWS:
 

BILL SHAW  
GATEWAY SERVICE COMMUNITY DEVELOPMENT DISTRICT  
13240 GRIFFIN DRIVE  
FORT MYERS, FLORIDA 33913  
PHONE: 239-561-1313
24. COORDINATE WITH GATEWAY SERVICE COMMUNITY DEVELOPMENT DISTRICT FOR ACCESS TO THE EXISTING LIGHTING LOAD CENTER WHEN WORKING ON THE EXISTING LIGHTING SYSTEM.
25. THE EXISTING LIGHTING SYSTEM WITHIN PROJECT LIMITS SHALL BE IN COMPLETE WORKING ORDER PRIOR TO FINAL ACCEPTANCE.
26. ALL REMOVED ITEMS INCLUDING BUT NOT LIMITED TO THE LIGHT POLES, LUMINAIRES, PULL BOXES, WIRING AND CONDUCTORS ARE TO BE DISPOSED OF BY THE CONTRACTOR AT A PLACE DETERMINED BY HIM.
27. ALL CONDUIT INSTALLATION NEAR TREES SHALL MEET ANSI A300 STANDARDS.

**PULL BOX LEGEND**  
 LCDOT = LEE COUNTY LIGHTING PULL BOX  
 GS = GATEWAY SERVICE COMMUNITY DEVELOPMENT DISTRICT PULL BOX

**CONDUIT LEGEND**  
 LC = PROPOSED LIGHTING CONDUIT FOR THE NEW LIGHTING SYSTEM  
 FC = FUTURE USE LIGHTING CONDUIT  
 SP = EMPTY SPARE LIGHTING CONDUIT

REVISIONS				DAVID J. ALLEN, PE P.E. NO.: 58540 CARDNO 3905 CRESCENT PARK DRIVE RIVERVIEW, FL 33578 CERTIFICATE OF AUTHORIZATION: 29915		GATEWAY BOULEVARD AT GRIFFIN DRIVE INTERSECTION CONTROL (ROUNDAABOUT)	COUNTY PROJECT NO.	SHT. NO.
DATE	DESCRIPTION	DATE	DESCRIPTION			GENERAL NOTES (1)	200672	L-3


THE OFFICIAL RECORD OF THIS SHEET IS THE ELECTRONIC FILE DIGITALLY SIGNED AND SEALED UNDER RULE 61G15-23.004, F.A.C.

## ROADWAY LIGHTING GENERAL NOTES (CONTINUED)

28. NOTIFY FLORIDA POWER AND LIGHT (FP&L) AT LEAST THREE (3) FULL BUSINESS DAYS PRIOR TO ANY INSTALLATION THAT IS WITHIN THE DISTANCE PER CURRENT OSHA REQUIREMENTS OF ENERGIZED ELECTRICAL CONDUCTORS. FP&L, AT ITS OPTION, WILL ASSIST THE CONTRACTOR TO COVER UP ENERGIZED CONDUCTORS AT INSTALLATION SITES OR TAKE OTHER SAFETY PRECAUTIONS AS NECESSARY. EXTREME CAUTION SHALL BE EXERCISED AT ALL TIMES IN PERFORMANCE OF WORK AROUND THE PRIMARY HIGH VOLTAGE COMPONENTS.
29. OVERHEAD FACILITIES ARE TO REMAIN ENERGIZED AND IN PLACE. TABLE "A", MINIMUM CLEARANCE DISTANCES SPECIFIED IN SUBPART CC OF OSHA RULE 1926 (AS THEY PERTAIN TO CRANE/DERRICK OPERATIONS), AND/OR THOSE MINIMUM DISTANCES SPECIFIED IN 29 CFR 1910.333(c)(3)(i)(A) AND (iii)(A) FOR WORK IN PROXIMITY TO POWER LINES NOT COVERED BY THIS SUBPART CC, ARE TO BE MAINTAINED.
30. AT LOCATIONS WHERE THE PROXIMITY OF THE INSTALLATION IS CLOSE TO THE EXISTING OVERHEAD POWER, AS DETERMINED BY THE ENGINEER, A "LOW PROFILE" RIG SHALL BE REQUIRED TO DRILL THE FOUNDATION AND INSTALL THE LIGHT POLES.
31. POWER SERVICE ASSEMBLY, LOAD CENTER AND SERVICE CONNECTIONS:
  - THE POWER SOURCE IS THE EXISTING FPL PAD MOUNTED TRANSFORMER #353206 AS DEPICTED ON THE PLANS.
  - THE POWER SERVICE ASSEMBLY SHALL HAVE CONDUIT WITH SERVICE WIRE RUNNING TO THE LEFT FRONT CORNER OF THE TRANSFORMER AS SHOWN IN THE PICTURE BELOW. THE FACE OF THE FRONT IS ON THE NORTH SIDE OF THE TRANSFORMER.
  - CONTACT JUAN CRUZ (FP&L) AT PHONE: (941) 423-4842 AND/OR EMAIL: JUAN.CRUIZ@FPL.COM OR THE LOCAL FP&L SERVICE PLANNER A MINIMUM OF FOUR (4) WEEKS PRIOR TO INSTALLING THE METER CAN AND THE TIME NEEDED TO OPEN THE TRANSFORMER BY FP&L TO STUB UP CONDUIT INSIDE THE TRANSFORMER AND PULL THE SERVICE WIRE. THE CONTRACTOR SHALL NOT OPEN OR PUSH THE CABLES INTO THE TRANSFORMER WITHOUT A FP&L CREW PRESENT.
  - FPL& MUST OPEN THE TRANSFORMER AND BE PRESENT DURING ALL WORK WITHIN THE TRANSFORMER.
  - AS AN OPTION, EMPTY CONDUIT CAN BE INSTALLED TO THE OUTSIDE OF THE FRONT LEFT SIDE OF THE TRANSFORMER AND THEN PULL THE WIRES ON AN ADVANCED STAND-BY APPOINTMENT SET-UP WITH FP&L.
  - THE METER-CAN, LOAD CENTER, ETC. SHALL BE INSTALLED A MINIMUM OF 8 FEET FROM THE FPL PAD MOUNTED TRANSFORMER AND 10 FEET FROM THE CLOSEST PART OF THE FPL SWITCH CABINET.
  - THE POWER SERVICE AND CONNECTION SHALL BE INSTALLED TO MEET LOCAL CODES, NESC AND FPL'S STANDARDS.
  - OBTAIN AND FOLLOW FPL'S STANDARDS LOCATED AT WWW.FPL.COM/PARTNER/BUILDERS/SERVICE-STANDARDS.HTML AND WWW.FPL.COM/CONTENT/DAM/FPL/US/PARTNER/PDF/ELECTRIC-SERVICE-STANDARDS.PDF.
  - THE SETS OF TRIPLEX SERVICE CABLES TO THE TRANSFORMER SHALL NOT EXCEED 5-SETS, WITH A MAXIMUM CABLE SIZE OF 4/0. THE 5-SETS OF CABLES IS THE TOTAL BETWEEN THE STREET LIGHTING POWER SERVICE ASSEMBLY AND THE PROPOSED RRFB POWER SERVICE ASSEMBLY AS SHOWN IN THE SIGNING AND MARKING PLANS.

ENTER FPL PAD MOUNTED TRANSFORMER AT THIS LOCATION.



REVISIONS				DAVID J. ALLEN, PE P.E. NO.: 58540 CARDNO 3905 CRESCENT PARK DRIVE RIVERVIEW, FL 33578 CERTIFICATE OF AUTHORIZATION: 29915		GATEWAY BOULEVARD AT GRIFFIN DRIVE INTERSECTION CONTROL (ROUNDAABOUT)	COUNTY PROJECT NO.	SHT. NO.
DATE	DESCRIPTION	DATE	DESCRIPTION			GENERAL NOTES (2)	200672	L-4

**LIGHTING DATA TABLE**

POLE NO.	CIRCUIT	STATION	DIST. OR ARM	LUMINAIRE WATTAGE	MOUNTING HEIGHT	DISTRIBUTION TYPE	POLE SETBACK TO CENTER OF POLE	PAY ITEM
1	A-3	146+26, BL GATEWAY LT	15'	88	35'	III	13' FROM EOP	715-4-12
2	A-1	146+12, BL GATEWAY RT	15'	88	35'	III	15' FROM FOC	715-4-12
3	A-3	147+70, BL GATEWAY LT	15'	88	35'	III	2' FROM FOS	715-4-12
4	A-1	148+06, BL GATEWAY RT	15'	88	35'	III	2' FROM BOS	715-4-12
5	A-3	148+59, BL GATEWAY LT	15'	88	35'	III	2' FROM BOS	715-4-12
6	A-1	148+56, BL GATEWAY RT	15'	88	35'	III	2' FROM BOS	715-4-12
7	A-4	149+97, BL GATEWAY LT	15'	88	35'	III	2' FROM BOS	715-4-12
8	A-2	149+88, BL GATEWAY RT	15'	88	35'	III	8' FROM BOS	715-4-12
9	A-4	150+60, BL GATEWAY LT	15'	133	35'	III	2' FROM BOS	715-4-12
10	A-2	151+75, BL GATEWAY RT	15'	88	35'	III	13' FROM EOP	715-4-12
11	A-4	152+14, BL GATEWAY LT	15'	88	35'	III	15' FROM FOC	715-4-12
12	A-2	153+10, BL GATEWAY RT	15'	88	35'	III	13' FROM EOP	715-4-12
13	A-4	153+48, BL GATEWAY LT	15'	88	35'	III	2' FROM FOS	715-4-12
14	A-3	315+65, BL FAIRWAY LAKES RT	15'	133	35'	III	16.25' FROM FOC	715-4-12
15	A-3	313+67, BL FAIRWAY LAKES RT	15'	133	35'	II	13.5' FROM EOP	715-4-12
16	A-2	318+55, BL GRIFFIN LT	15'	133	35'	III	2' FROM BOS	715-4-12
17	A-1	319+68, BL GRIFFIN RT	15'	88	35'	III	17' FROM FOC	715-4-12
18	A-2	320+72, BL GRIFFIN LT	15'	88	35'	III	14' FROM FOC	715-4-12
19	A-2	322+23, BL GRIFFIN LT	15'	88	35'	III	12' FROM FOC	715-4-12

**AASHTO ROUNDABOUT**

**LIGHTING DESIGN CRITERIA**

- Average Horizontal Initial Intensity 1.3 Foot Candles
- Average Vertical Initial Intensity 1.5 Foot Candles
- Uniformity Ratio Avg./Min. 4:1 Or Less
- Max./Min. 10:1 Or Less
- Veiling Luminance Ratio 0.3:1 Or Less
- Wind Speed 170 MPH

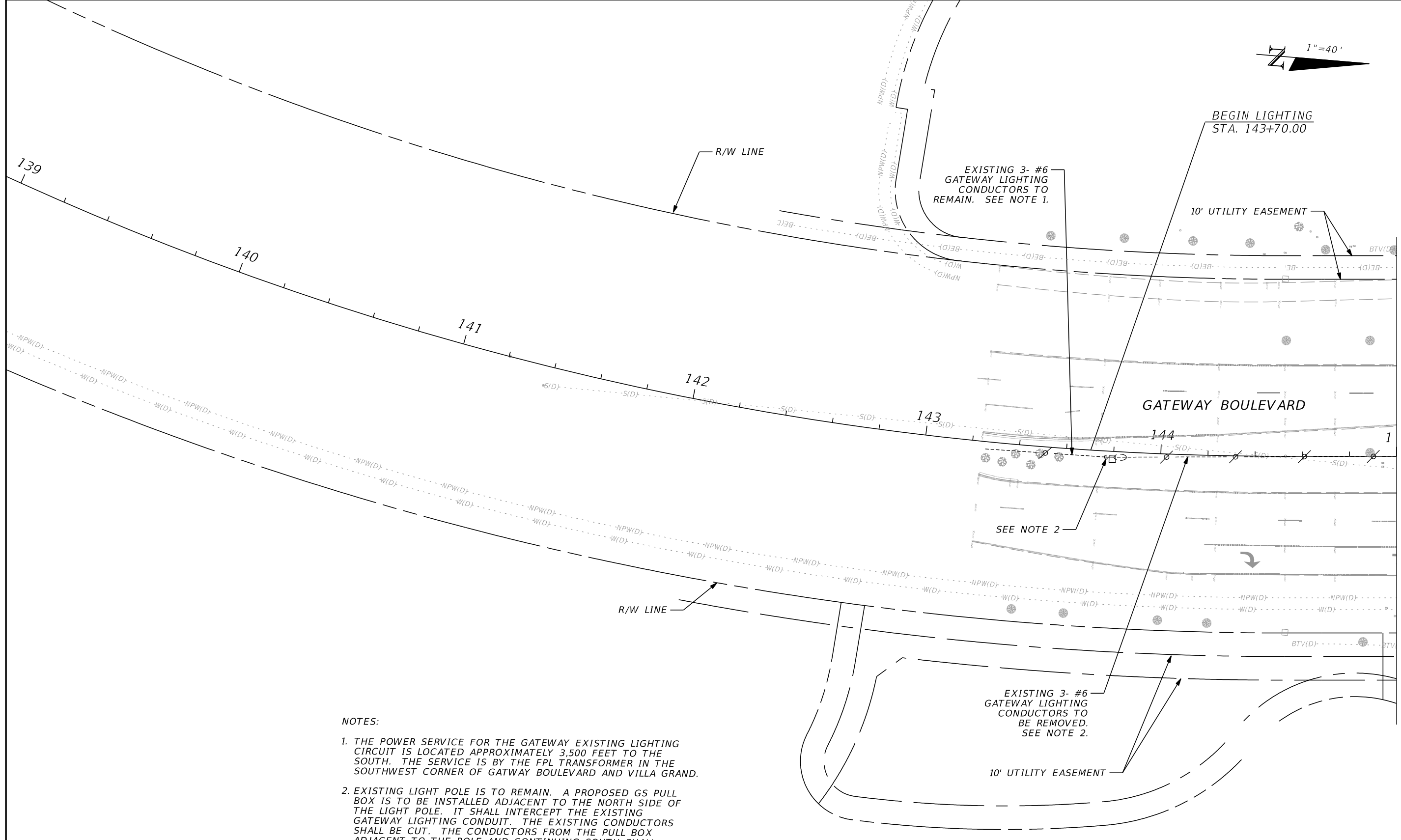
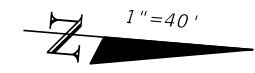
**LEGEND**

SYMBOLS	DESCRIPTION
	Designed for a American Electric Lighting Autobahn ATB2 88 watt LED luminaire with 3000k color temperature, Roadway Type III distribution and houseside shields. See pay item footnotes for additional luminaire information. Luminaire shall be wired for 240 volt operation. Pole mounting height is 35 feet with a 15-foot arm length mounted on a standard light pole. No tilt. Lighting basis of design used AEL Autobahn ATB2 photometric curve number ATB2_40BLEDE70_XXXXX_R3_3k_HSS with output lumens of 11,000.
	Designed for a American Electric Lighting Autobahn ATB2 133 watt LED luminaire with 3000k color temperature and houseside shields. See table for specified distribution type. See pay item footnotes for additional luminaire information. Luminaire shall be wired for 240 volt operation. Pole mounting height is 35 feet with a 15-foot arm length mounted on a standard light pole. No tilt. Lighting basis of design used AEL Autobahn ATB2 photometric curve number ATB2_40BLEDE10_XXXXX_R3_3k_HSS with output lumens of 16,000.
	Existing pole and luminaire to remain.
	Existing pole and luminaire to be removed.
	Existing conduit and conductors to remain unless noted otherwise.
	Proposed open trench conduit with THWN-2 conductors inside (conduit and conductor size as shown on plan sheets). Run one (1) No. 6 AWG (minimum) copper bond conductor (THWN-2 green insulation) inside conduit with other conductors.
	Proposed conduit directional bored with THWN-2 conductors inside (conduit and conductor size as shown on plan sheets). Extend conduit beyond edge of pavement to pull boxes. Run one (1) No. 6 AWG (minimum) copper bond conductor (THWN-2 green insulation) inside conduit with other conductors.
	Pull box with concrete apron for the LCDOT maintained proposed lighting system. See Lee County Specifications for Signal and Street Lighting.
	Pull box for the adjusted Gateway Service Community Development District maintained lighting system. For specifications contact Bill Shaw with Gateway Service Community Development District.
	Proposed 120V/240V Load Center / Power Service Assembly. See Lee County Specifications for Signal and Street Lighting.
	Existing FPL Transformer to be used for power source.

FOC = FACE OF CURB, FOS = FRONT OF SIDEWALK, BOS = BACK OF SIDEWALK, EOP = EDGE OF PAVEMENT

<b>REVISIONS</b>		DAVID J. ALLEN, PE P.E. NO.: 58540 CARDNO 3905 CRESCENT PARK DRIVE RIVERVIEW, FL 33578 CERTIFICATE OF AUTHORIZATION: 29915		GATEWAY BOULEVARD AT GRIFFIN DRIVE INTERSECTION CONTROL (ROUNDABOUT)	COUNTY PROJECT NO.	SHT. NO.
DATE	DESCRIPTION			DATE	DESCRIPTION	<b>LIGHTING DATA TABLE AND LEGEND</b>

THE OFFICIAL RECORD OF THIS SHEET IS THE ELECTRONIC FILE DIGITALLY SIGNED AND SEALED UNDER RULE 61G15-23.004, F.A.C.



MATCHLINE STA. 145+00.00 LIGHTING PLAN SHEET (2)

**NOTES:**

1. THE POWER SERVICE FOR THE GATEWAY EXISTING LIGHTING CIRCUIT IS LOCATED APPROXIMATELY 3,500 FEET TO THE SOUTH. THE SERVICE IS BY THE FPL TRANSFORMER IN THE SOUTHWEST CORNER OF GATWAY BOULEVARD AND VILLA GRAND.
2. EXISTING LIGHT POLE IS TO REMAIN. A PROPOSED GS PULL BOX IS TO BE INSTALLED ADJACENT TO THE NORTH SIDE OF THE LIGHT POLE. IT SHALL INTERCEPT THE EXISTING GATEWAY LIGHTING CONDUIT. THE EXISTING CONDUCTORS SHALL BE CUT. THE CONDUCTORS FROM THE PULL BOX ADJACENT TO THE POLE AND CONTINUING SOUTH SHALL REMAIN. THE CONDUCTORS GOING NORTH FROM THE PROPOSED PULL BOX TO THE END OF THE LIGHTING CIRCUIT AT THE EXISTING LIGHT POLE (APPROXIMATE STATION 148+50) SHALL BE REMOVED.

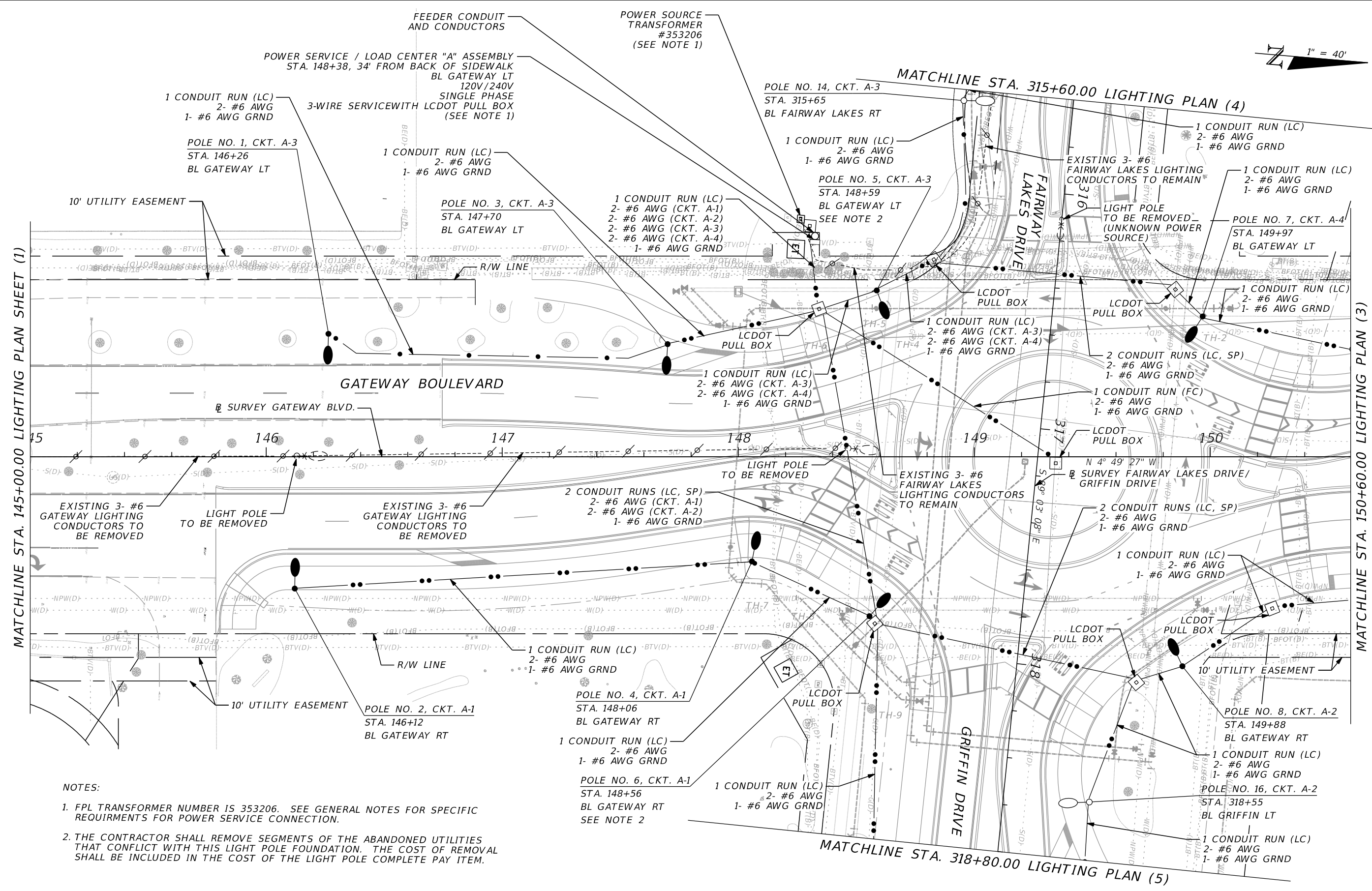
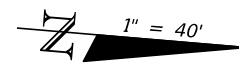
REVISIONS			
DATE	DESCRIPTION	DATE	DESCRIPTION

DAVID J. ALLEN, PE  
 P.E. NO.: 58540  
 CARDNO  
 3905 CRESCENT PARK DRIVE  
 RIVERVIEW, FL 33578  
 CERTIFICATE OF AUTHORIZATION: 29915



GATEWAY BOULEVARD AT GRIFFIN DRIVE  
 INTERSECTION CONTROL (ROUNDAABOUT)  
**LIGHTING PLAN (1)**

COUNTY PROJECT NO.	SHT. NO.
200672	L-6



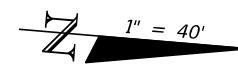
MATCHLINE STA. 145+00.00 LIGHTING PLAN SHEET (1)

MATCHLINE STA. 150+60.00 LIGHTING PLAN (3)

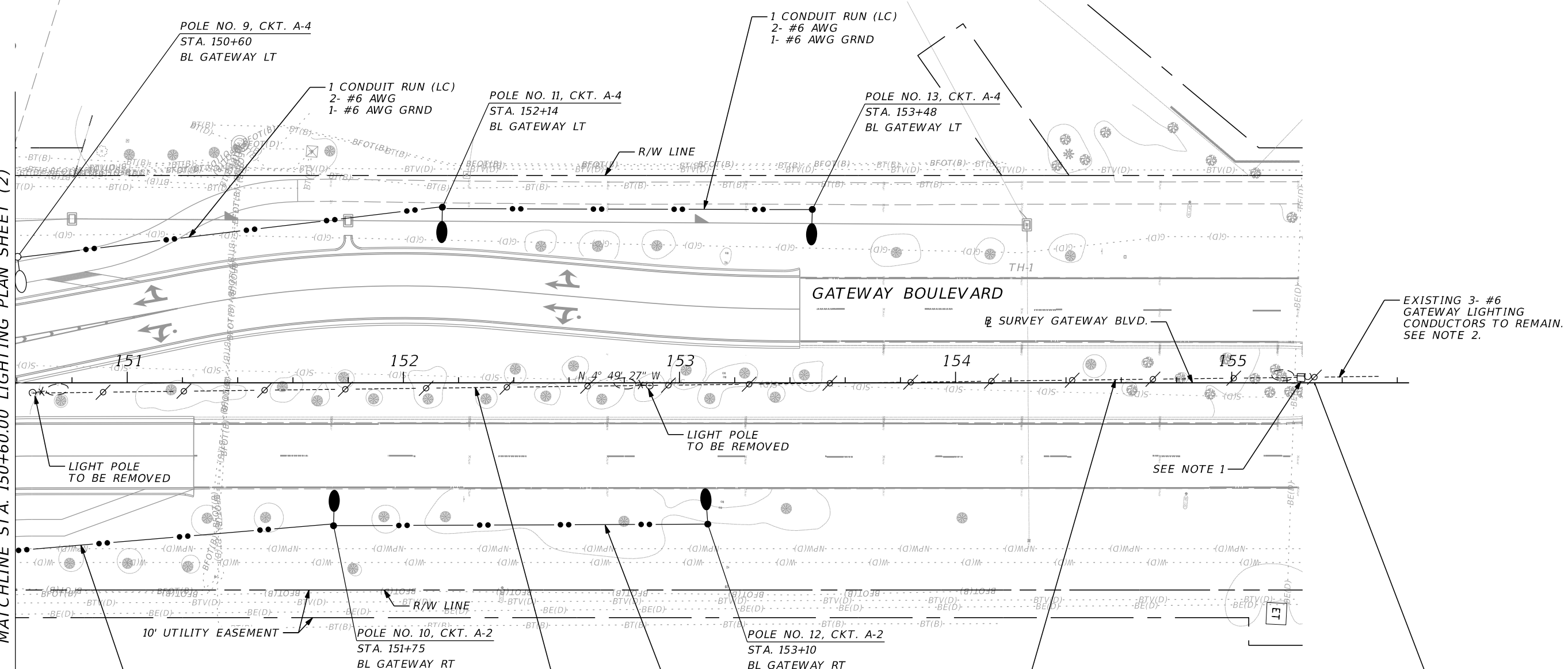
- NOTES:**
1. FPL TRANSFORMER NUMBER IS 353206. SEE GENERAL NOTES FOR SPECIFIC REQUIREMENTS FOR POWER SERVICE CONNECTION.
  2. THE CONTRACTOR SHALL REMOVE SEGMENTS OF THE ABANDONED UTILITIES THAT CONFLICT WITH THIS LIGHT POLE FOUNDATION. THE COST OF REMOVAL SHALL BE INCLUDED IN THE COST OF THE LIGHT POLE COMPLETE PAY ITEM.

REVISIONS				DAVID J. ALLEN, PE P.E. NO.: 58540 CARDNO 3905 CRESCENT PARK DRIVE RIVERVIEW, FL 33578 CERTIFICATE OF AUTHORIZATION: 29915		GATEWAY BOULEVARD AT GRIFFIN DRIVE INTERSECTION CONTROL (ROUNDBOUT)		COUNTY	SHT. NO.
DATE	DESCRIPTION	DATE	DESCRIPTION			LIGHTING PLAN (2)		PROJECT NO.	
						200672			L-7

THE OFFICIAL RECORD OF THIS SHEET IS THE ELECTRONIC FILE DIGITALLY SIGNED AND SEALED UNDER RULE 61G15-23.004, F.A.C.



MATCHLINE STA. 150+60.00 LIGHTING PLAN SHEET (2)



**NOTES:**

1. EXISTING LIGHT POLE IS TO REMAIN. A PROPOSED GS PULL BOX IS TO BE INSTALLED ADJACENT TO THE SOUTH SIDE OF THE LIGHT POLE. IT SHALL INTERCEPT THE EXISTING GATEWAY LIGHTING CONDUIT. THE EXISTING CONDUCTORS SHALL BE CUT. THE CONDUCTORS FROM THE PULL BOX ADJACENT TO THE POLE AND CONTINUING NORTH SHALL REMAIN. THE CONDUCTORS GOING SOUTH FROM THE PROPOSED PULL BOX TO THE END OF THE LIGHTING CIRCUIT AT THE EXISTING LIGHT POLE (APPROXIMATE STATION 150+65) SHALL BE REMOVED.
2. THE POWER SERVICE FOR THE GATEWAY EXISTING LIGHTING CIRCUIT IS LOCATED APPROXIMATELY 1,950 FEET TO THE NORTH. THE SERVICE IS BY THE FPL TRANSFORMER IN THE NORTHEAST CORNER OF GATEWAY BOULEVARD AND GIRL SCOUT LANE/GATEWAY GREENS DRIVE.

EXISTING 3- #6 GATEWAY LIGHTING CONDUCTORS TO REMAIN. SEE NOTE 2.

END LIGHTING STA. 155+30.00

REVISIONS			
DATE	DESCRIPTION	DATE	DESCRIPTION

DAVID J. ALLEN, PE  
 P.E. NO.: 58540  
 CARDNO  
 3905 CRESCENT PARK DRIVE  
 RIVERVIEW, FL 33578  
 CERTIFICATE OF AUTHORIZATION: 29915

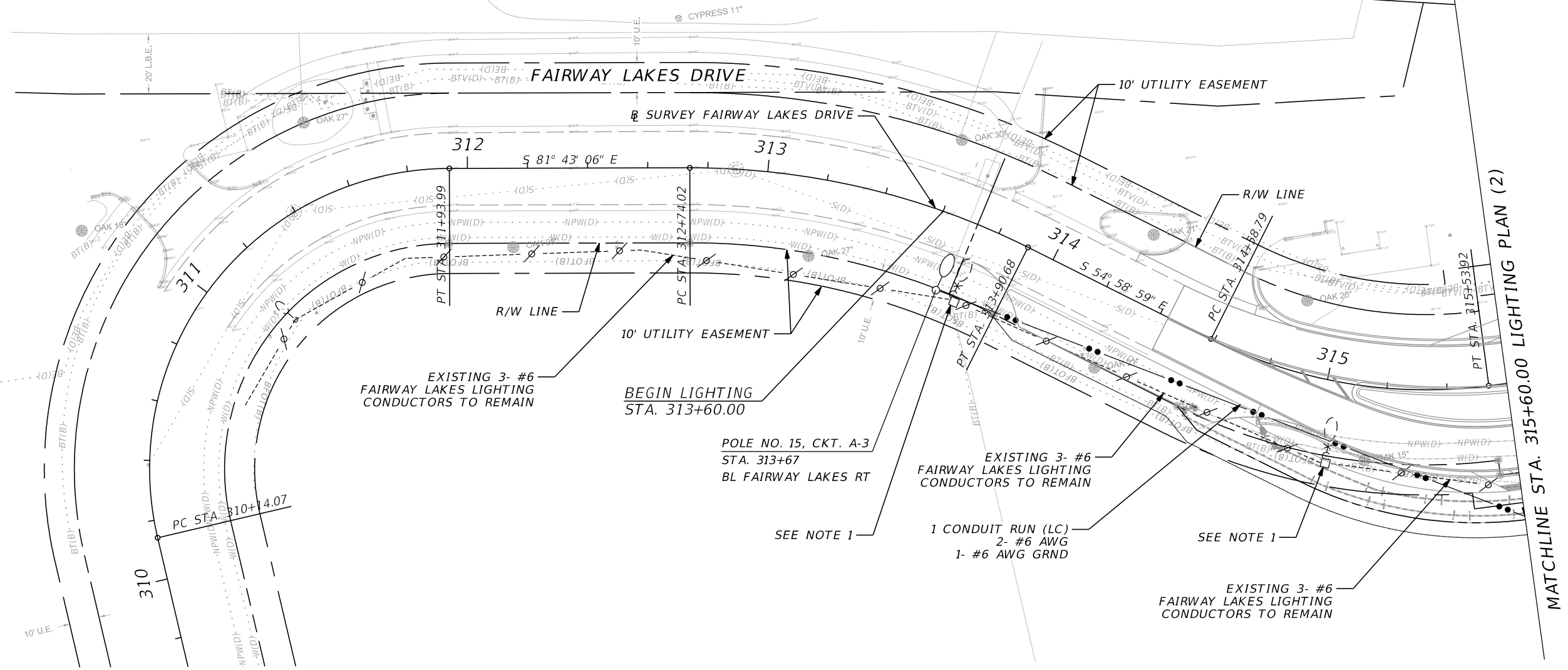


GATEWAY BOULEVARD AT GRIFFIN DRIVE  
 INTERSECTION CONTROL (ROUNDBABOUT)  
**LIGHTING PLAN (3)**

COUNTY PROJECT NO.	SHT. NO.
200672	L-8

THE OFFICIAL RECORD OF THIS SHEET IS THE ELECTRONIC FILE DIGITALLY SIGNED AND SEALED UNDER RULE 61G15-23.004, F.A.C.





**NOTES:**

1. EXISTING LIGHT POLE IS TO BE REMOVED. THE EXISTING PULL BOX SHALL BE REPLACED WITH A PROPOSED GS PULL BOX. THE CONDUCTORS DROP TO THE REMOVED POLE SHALL ALSO BE REMOVED. THE EXISTING FAIRWAY LIGHTING CONDUCTORS FROM BOTH THE WEST AND EAST SHALL REMAIN AND SPLICED TO MAINTAIN POWER TO THE EXISTING DOWNSTREAM LIGHT POLES TO THE WEST.
2. DURING THE LIGHTING DESIGN FOR THIS PROJECT, GATEWAY SERVICE COMMUNITY DISTRICT STATED THE LIGHTING ALONG FAIRWAY LAKES DRIVE IS NOT WORKING.

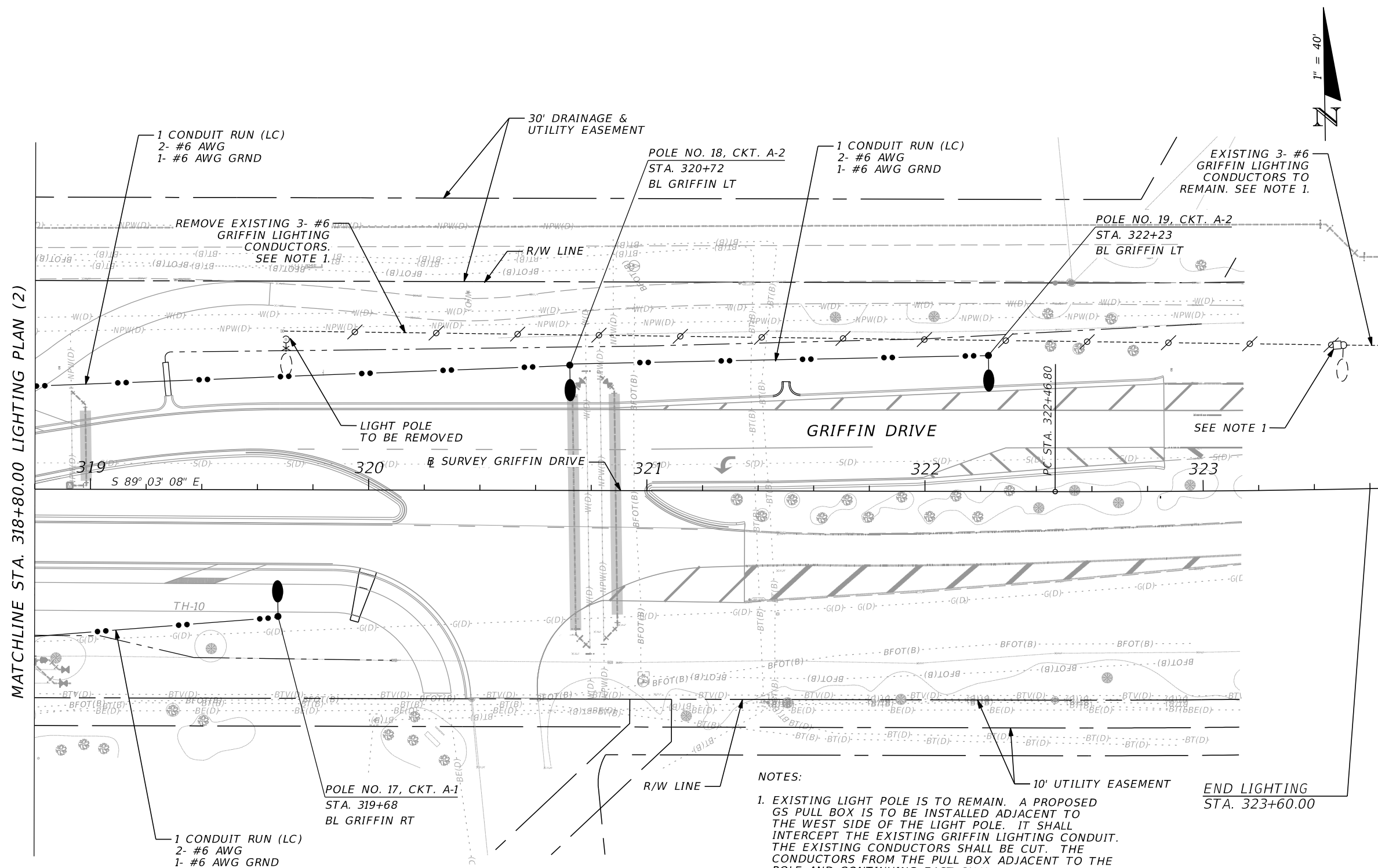
REVISIONS			
DATE	DESCRIPTION	DATE	DESCRIPTION

DAVID J. ALLEN, PE  
 P.E. NO.: 58540  
 CARDNO  
 3905 CRESCENT PARK DRIVE  
 RIVERVIEW, FL 33578  
 CERTIFICATE OF AUTHORIZATION: 29915



GATEWAY BOULEVARD AT GRIFFIN DRIVE  
 INTERSECTION CONTROL (ROUNDAABOUT)  
**LIGHTING PLAN (4)**

COUNTY PROJECT NO. 200672  
 SHT. NO. L-9



**NOTES:**

- EXISTING LIGHT POLE IS TO REMAIN. A PROPOSED GS PULL BOX IS TO BE INSTALLED ADJACENT TO THE WEST SIDE OF THE LIGHT POLE. IT SHALL INTERCEPT THE EXISTING GRIFFIN LIGHTING CONDUIT. THE EXISTING CONDUCTORS SHALL BE CUT. THE CONDUCTORS FROM THE PULL BOX ADJACENT TO THE POLE AND CONTINUING EAST SHALL REMAIN. THE CONDUCTORS GOING WEST FROM THE PROPOSED PULL BOX TO THE END OF THE LIGHTING CIRCUIT AT THE EXISTING LIGHT POLE (APPROXIMATE STATION 319+70) SHALL BE REMOVED.
- THE POWER SERVICE FOR THE GRIFFIN EXISTING LIGHTING CIRCUIT IS LOCATED APPROXIMATELY 2,275 FEET TO THE EAST. THE SERVICE IS NEAR THE FPL TRANSFORMER ON THE SOUTH SIDE OF GRIFFIN DRIVE EAST OF PINWOOD LAKES DRIVE.

10' UTILITY EASEMENT  
END LIGHTING STA. 323+60.00

MATCHLINE STA. 318+80.00 LIGHTING PLAN (2)

REVISIONS			
DATE	DESCRIPTION	DATE	DESCRIPTION

DAVID J. ALLEN, PE  
P.E. NO.: 58540  
CARDNO  
3905 CRESCENT PARK DRIVE  
RIVERVIEW, FL 33578  
CERTIFICATE OF AUTHORIZATION: 29915



GATEWAY BOULEVARD AT GRIFFIN DRIVE  
INTERSECTION CONTROL (ROUNDBABOUT)  
**LIGHTING PLAN (5)**

COUNTY PROJECT NO. 200672  
SHT. NO. L-10

PANEL "A" SCHEDULE


Panel ID: <u>Proposed Load Center "A"</u>	Main Breaker: <u>100 A</u>
Location: <u>Sta. 148+38 BL GATEWAY, 34' LT From BOS</u>	Voltage: <u>120/240 V</u>
Mounting: <u>Pole</u>	Single Phase, 3-wire

Circuit Description		Load (KVA)	Breaker	Pole	Bus	Pole	Breaker	Load (KVA)	Circuit Description	
1	A-1	0.60	20	2	A	2	20	0.90	A-2	2
3	↓	0.60			B			0.90	↓	4
5	A-3	0.75	20	2	A	2	20	0.60	A-4	6
7	↓	0.75			B			0.60	↓	8
9					A					10
11					B					12
13					A					14
15					B					16
17					A					18
19					B					20
21					A					22
23					B					24

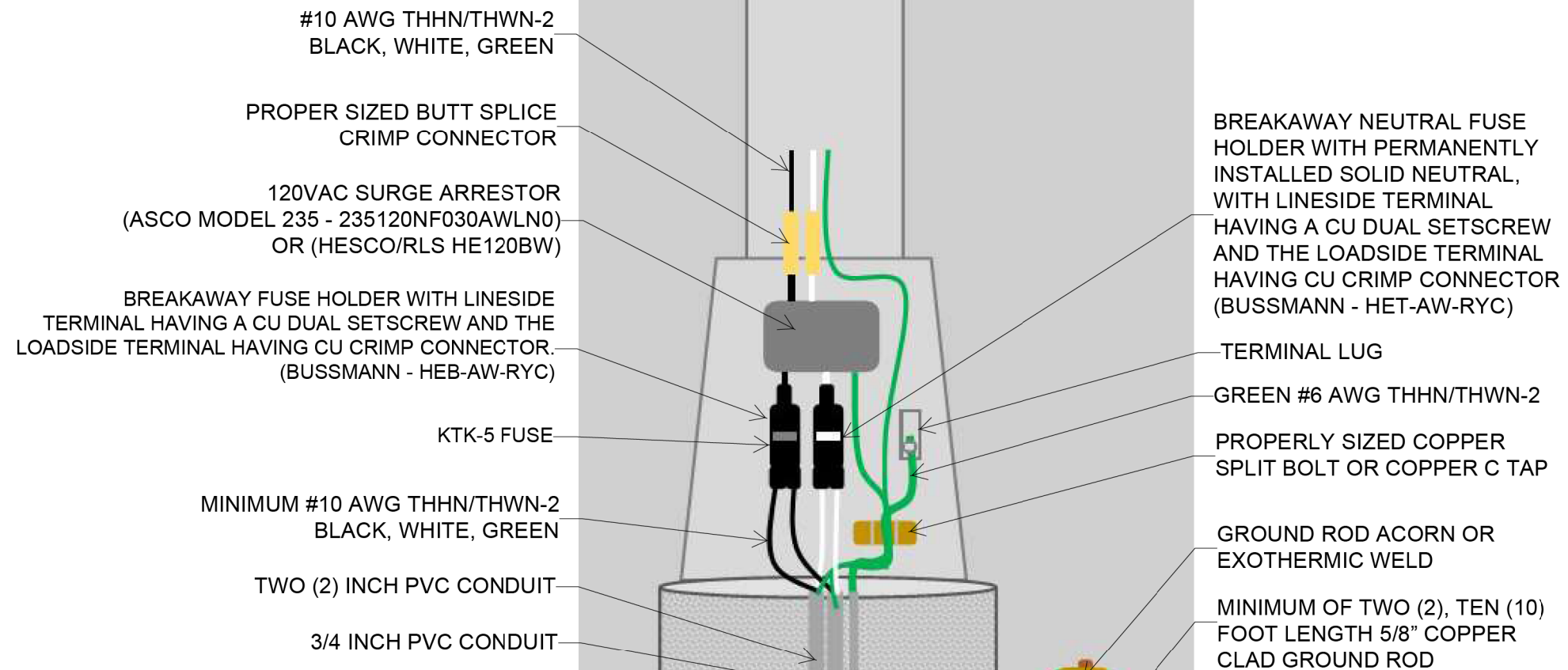
NOTES

1. SAFETY SWITCH - 100 AMP F/A 100 AMP
2. BOS = BACK OF SIDEWALK

TOTAL DEMAND	5.70 KVA
TOTAL DEMAND AMPS	23.75 AMPS
NO. OF POLES	19


REVISIONS				DAVID J. ALLEN, PE P.E. NO.: 58540 CARDNO 3905 CRESCENT PARK DRIVE RIVERVIEW, FL 33578 CERTIFICATE OF AUTHORIZATION: 29915		GATEWAY BOULEVARD AT GRIFFIN DRIVE INTERSECTION CONTROL (ROUNDBOUT)	COUNTY PROJECT NO.	SHT. NO.
DATE	DESCRIPTION	DATE	DESCRIPTION			PANEL SCHEDULE	200672	L-11

THE OFFICIAL RECORD OF THIS SHEET IS THE ELECTRONIC FILE DIGITALLY SIGNED AND SEALED UNDER RULE 61G15-23.004, F.A.C.



**120 VAC**

REVISION 11/13/2020	<b>Streetlight Pole Wiring Detail</b> Streetlight T-Base wiring connections	<b>Lee County Department of Transportation - Traffic</b> DRAWN BY: RYAN KIRSCH	<b>INDEX NO.</b> 21	<b>SHEET NO.</b> 1 of 4
------------------------	--	---	------------------------	----------------------------

REVISIONS				DAVID J. ALLEN, PE P.E. NO.: 58540 CARDNO 3905 CRESCENT PARK DRIVE RIVERVIEW, FL 33578 CERTIFICATE OF AUTHORIZATION: 29915		GATEWAY BOULEVARD AT GRIFFIN DRIVE INTERSECTION CONTROL (ROUNDBOUT)		COUNTY	SHT. NO.
DATE	DESCRIPTION	DATE	DESCRIPTION			PROJECT NO.			
						<b>STREETLIGHT POLE WIRING DETAIL</b>		200672	L-12

THE OFFICIAL RECORD OF THIS SHEET IS THE ELECTRONIC FILE DIGITALLY SIGNED AND SEALED UNDER RULE 61G15-23.004, F.A.C.