

NO.	REVISIONS DESCRIPTION	DATE

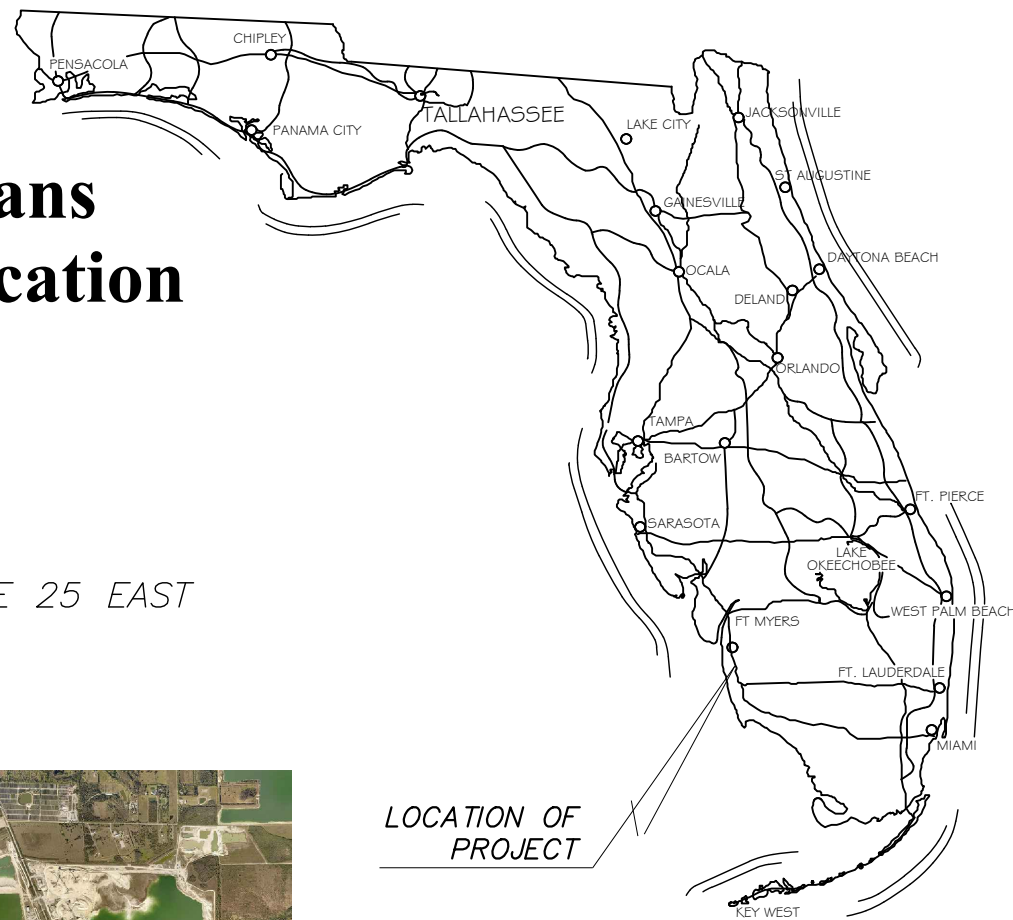
DATE: December 4, 2020
 PROJECT NO. 20192030-000
 FILE NO. 25-46-25
 SCALE: As Shown

Cover
 SHEET NUMBER
 01

Sheet List Table	
Sheet Number	Sheet Title
01	Cover
02	Notes & Legends
03	Key Map and Sequencing Table
04	Overall Improvement Map
Plan & Profile	
05	Sta 632+50 to 639+50
06	Sta 639+50 to 646+50
07	Sta 646+50 to 653+50
08	Sta 653+50 to 660+50
09	Sta 660+50 to 667+50
10	Sta 667+50 to 674+50
11	Sta 674+50 to 681+50
12	Sta 681+50 to 688+50
13	Sta 688+50 to 695+50
14	Sta 695+50 to 702+50
15	Sta 702+50 to 709+50
16	Sta 709+50 to 716+50
17	Sta 716+50 to 723+50
18	Sta 723+50 to 730+50
19	Sta 730+50 to 737+50
20	Sta 737+50 to 744+50
21	Sta 744+50 to 751+50
22	Sta 751+50 to 758+50
23	Sta 758+50 to 765+50
24	Sta 765+50 to 772+50
25	Sta 772+50 to 779+50
26	Sta 779+50 to 786+50
27	Sta 786+50 to 793+50
28	Sta 793+50 to 800+50
29	Cross Sections 1 of 3
30	Cross Sections 2 of 3
31	Cross Sections 3 of 3
32	Plan Detail 1 of 5
33	Plan Detail 2 of 5
34	Plan Detail 3 of 5
35	Plan Detail 4 of 5
36	Plan Detail 5 of 5
37	Pinewoods Flow Configuration Exhibit
Fitting and Valve Tables	
T-01	Force Main Valves
Details	
D-01	Details 1 of 3
D-02	Details 2 of 3
D-03	Details 3 of 3

Final Construction Plans Corkscrew Utilities Relocation (Phase 1)

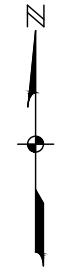
FOR
LEE COUNTY
 LOCATED IN
 SECTIONS 25 TOWNSHIP 46 SOUTH, RANGE 25 EAST
LEE COUNTY, FLORIDA
 December 4, 2020



LOCATION OF PROJECT



LOCATION MAP
 N.T.S.



Final Construction Plans

TRAFFIC CONTROL SHALL COMPLY WITH THE FEDERAL MANUAL ON UNIFORM TRAFFIC CONTROL DEVICES [MUTCD] AND FDOT DESIGN STANDARDS 600 SERIES

FOR INFORMATION REGARDING THIS PROJECT, CONTACT:
DAVID BRICE TROUPEAU, PE

DAVID BRICE TROUPEAU, PE
 FL License No. 69783

DESIGN CONSULTANT

JOHNSON ENGINEERING

2122 JOHNSON STREET
 P.O. BOX 1550
 FORT MYERS, FLORIDA 33902-1550
 PHONE (239) 334-0046
 FAX (239) 334-3661
 E.B. #642 & L.B. #642

PROPOSED IMPROVEMENT LEGEND

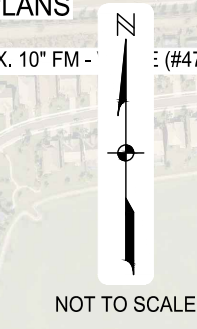
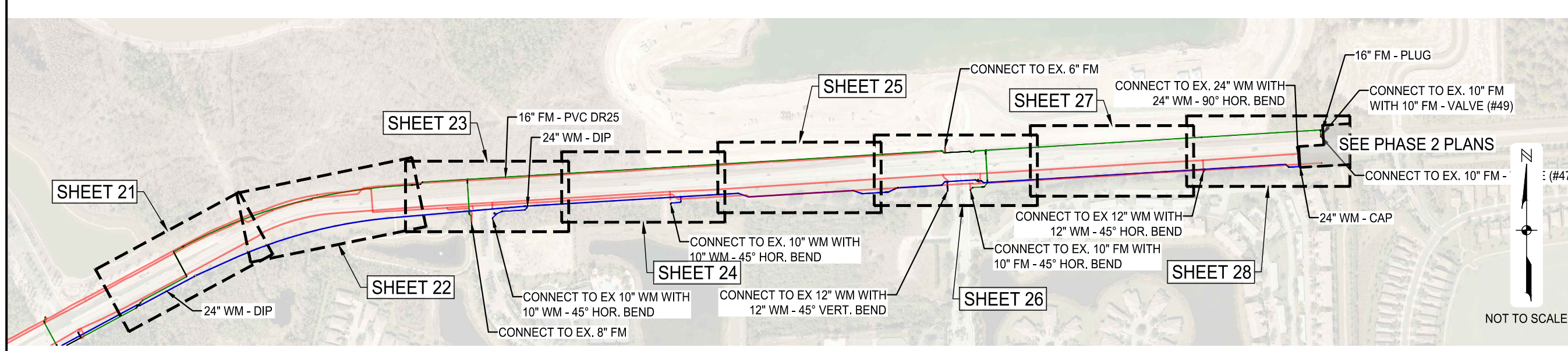
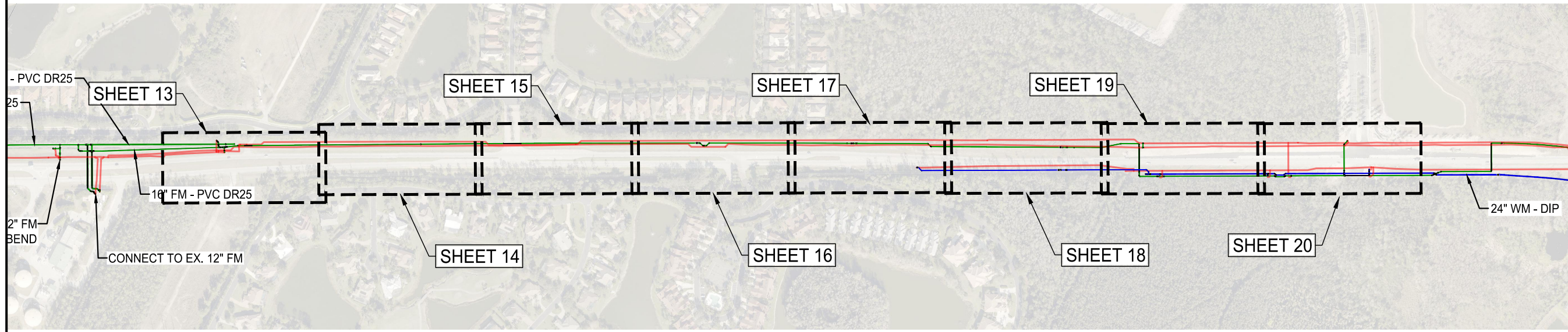
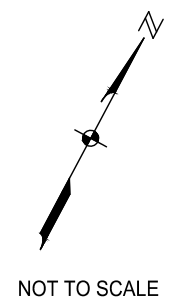
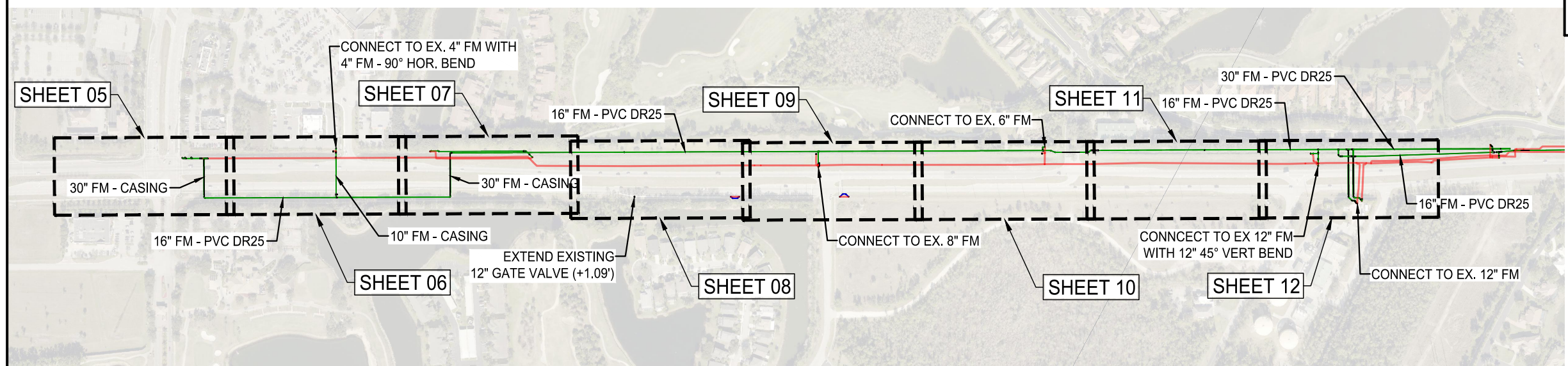
FORCE MAIN	
WATER MAIN	
RAW WATER MAIN	
DEMO - UTILITY	

JOHNSON ENGINEERING
 JOHNSON ENGINEERING, INC.
 2122 JOHNSON STREET
 P.O. BOX 1550
 FORT MYERS, FLORIDA 33902-1550
 PHONE: (239) 334-0046
 FAX: (239) 334-3661
 E.B. #642 & L.B. #642

DAVID BRICE TROUTEAUX, PE
 FL License No. 69783

LEE COUNTY

Corkscrew Utilities Relocation
 (Phase 1)
 LEE COUNTY, FLORIDA



NO.	DATE	DESCRIPTION

DATE: December 4, 2020
 PROJECT NO.: 20192030-000
 FILE NO.: 25-46-25
 SCALE: As Shown

Overall Improvement Map

SHEET NUMBER
 04

DAVID BRICE TROUTEAUD, PE
 FL License No. 69783

LEE COUNTY

Corkscrew Utilities Relocation
 (Phase 1)
 LEE COUNTY, FLORIDA

NO.	DESCRIPTION	DATE

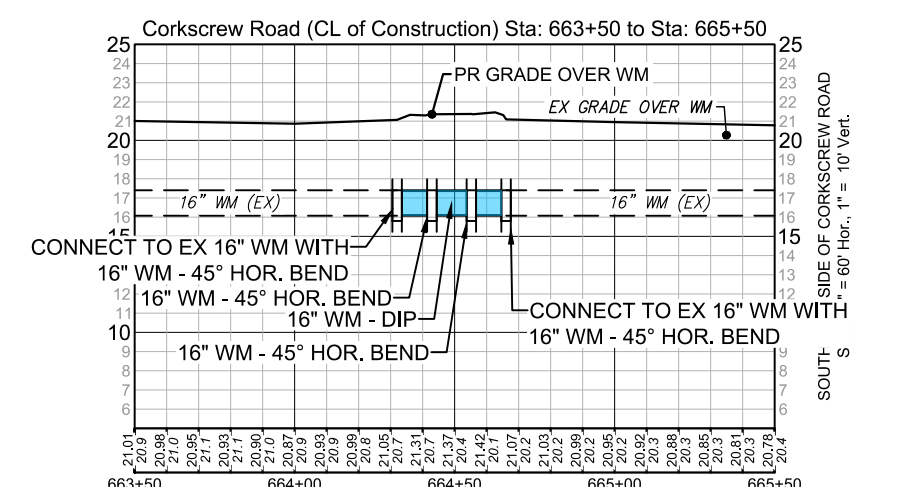
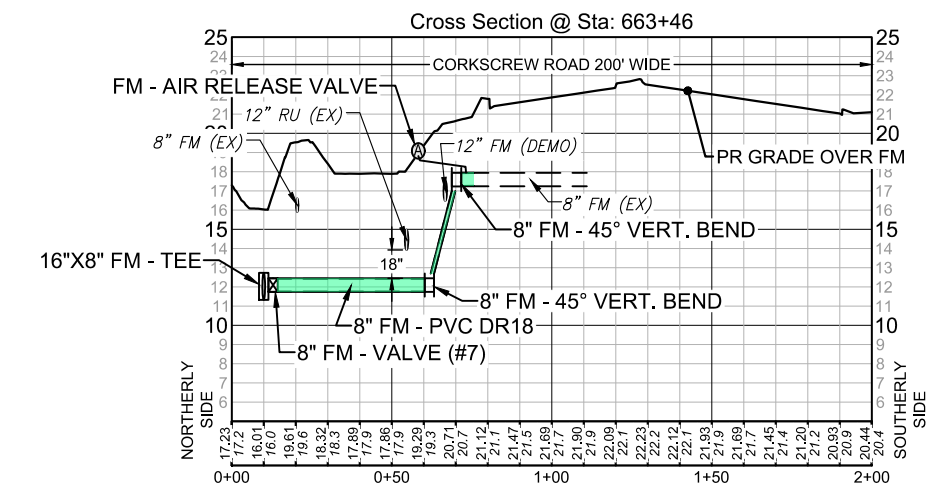
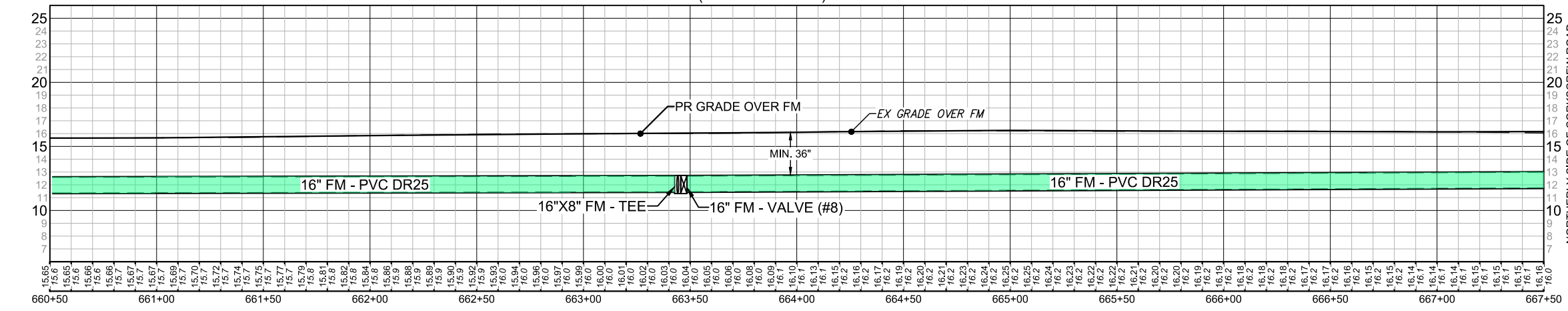
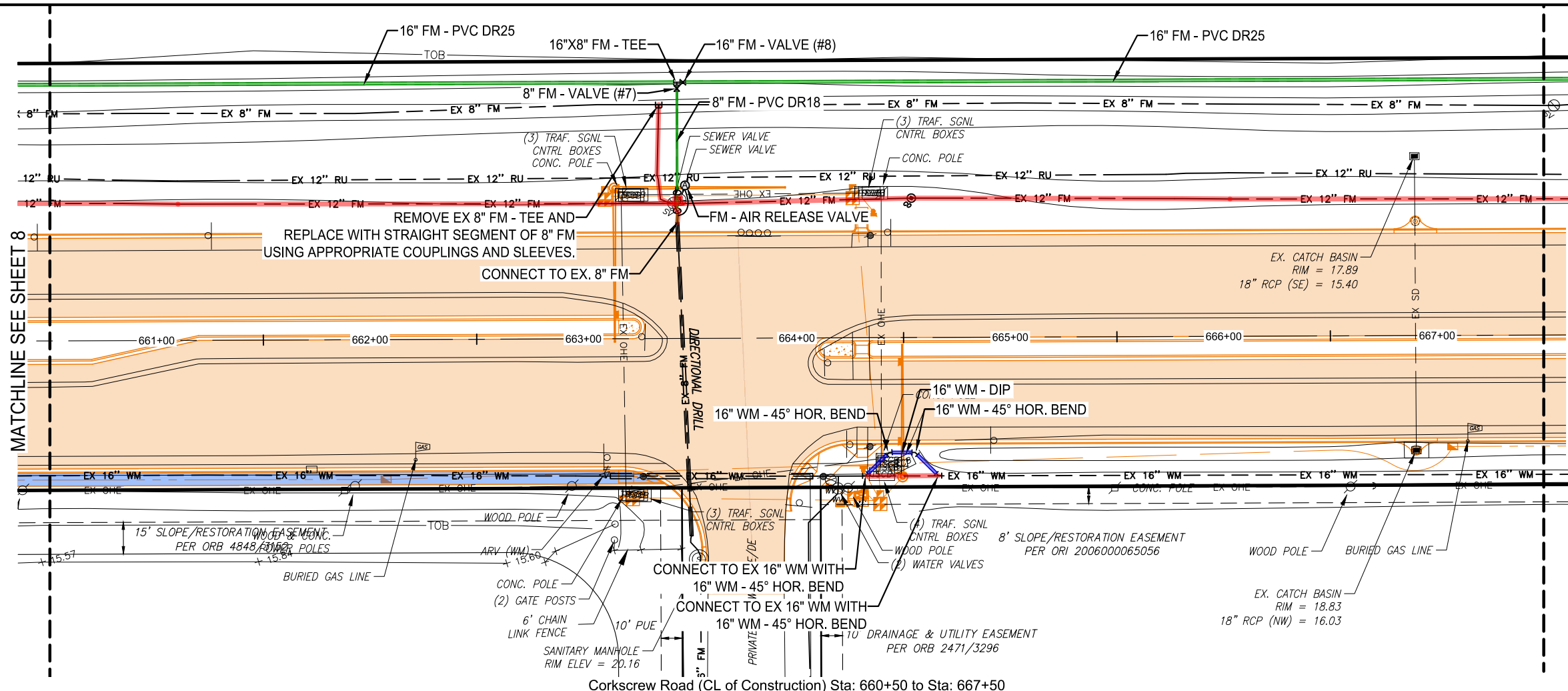
DATE: December 4, 2020
 PROJECT NO.: 20192030-000
 FILE NO.: 25-46-25
 SCALE: As Shown

Sta 660+50 to 667+50

SHEET NUMBER

PROPOSED IMPROVEMENT LEGEND

- FORCE MAIN —
- WATER MAIN —
- RAW WATER MAIN —
- DEMO - UTILITY —
- PR. SIDEWALK (NIC) —
- PR. PAVEMENT (NIC) —



DAVID BRICE TROUTEAUD, PE
 FL License No. 69783

LEE COUNTY

Corkscrew Utilities Relocation
 (Phase 1)
 LEE COUNTY, FLORIDA

NO.	DATE	DESCRIPTION

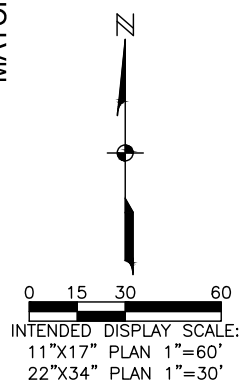
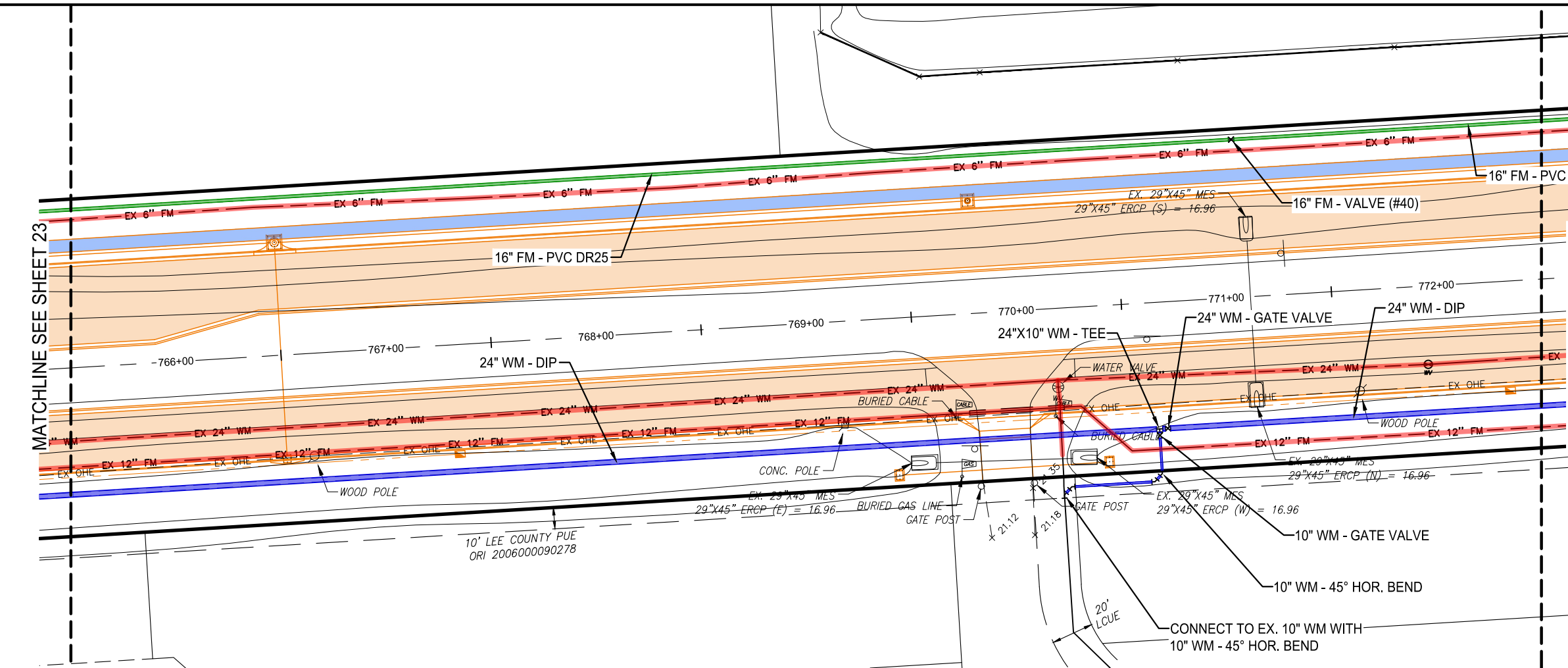
DATE: December 4, 2020
 PROJECT NO.: 20192030-000
 FILE NO.: 25-46-25
 SCALE: As Shown

Sta 765+50 to 772+50

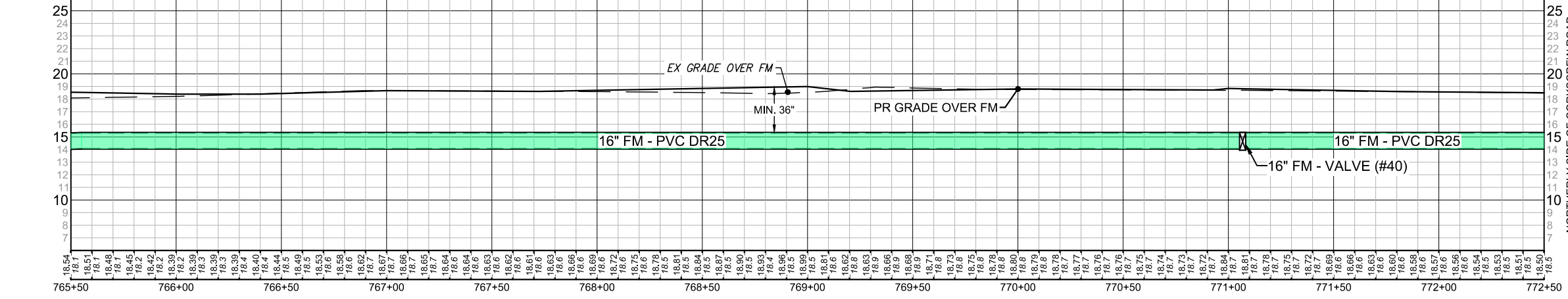
SHEET NUMBER

PROPOSED IMPROVEMENT LEGEND

- FORCE MAIN —
- WATER MAIN —
- RAW WATER MAIN —
- DEMO - UTILITY —
- PR. SIDEWALK (NIC) —
- PR. PAVEMENT (NIC) —

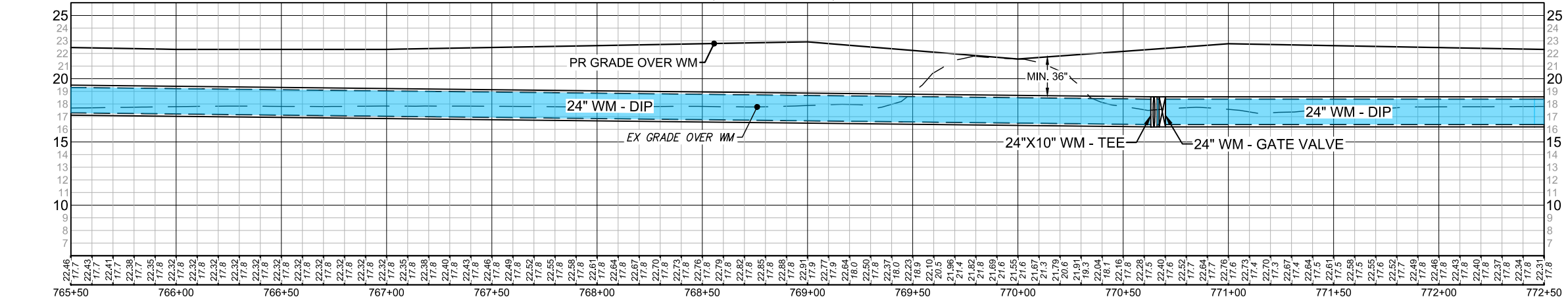


Corkscrew Road (CL of Construction) Sta: 765+50 to Sta: 772+50

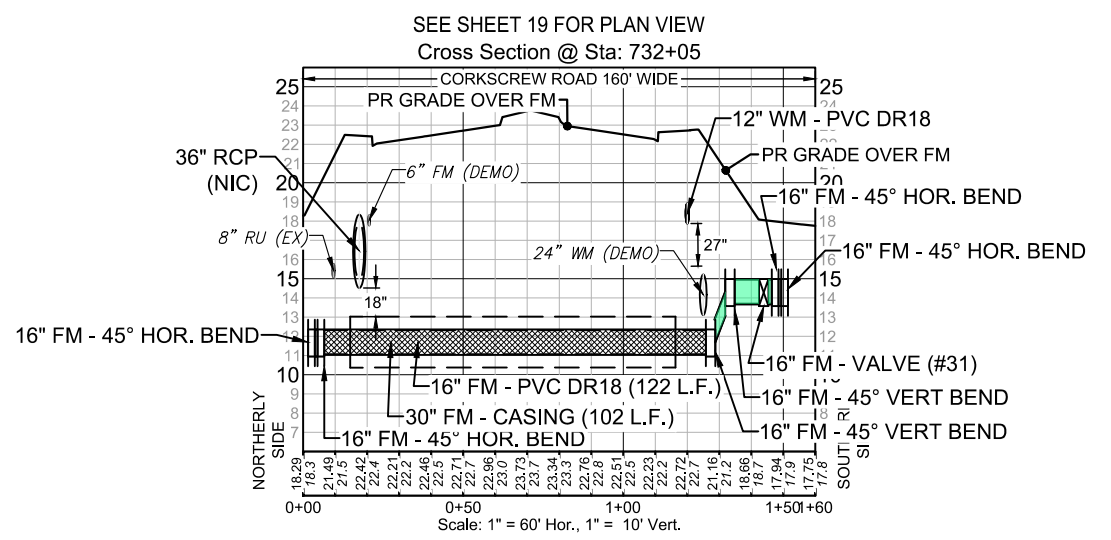
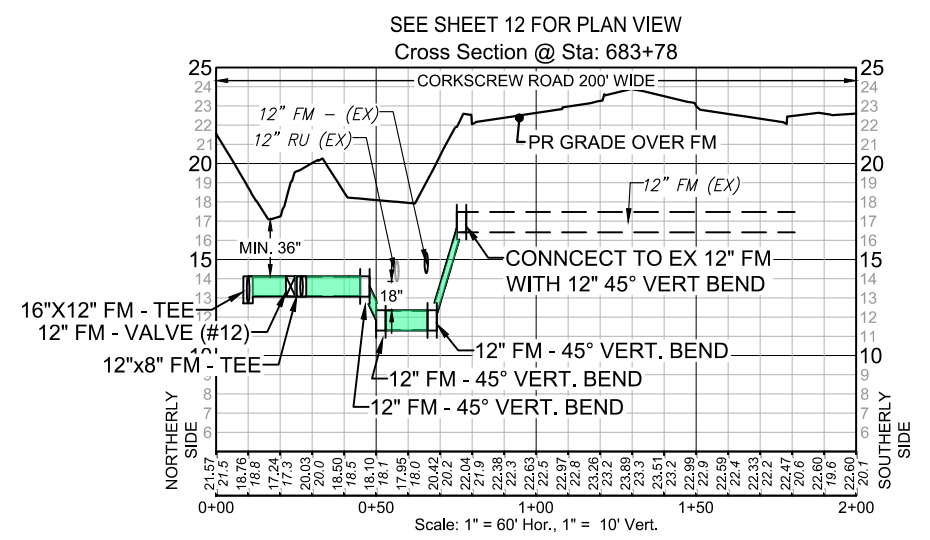
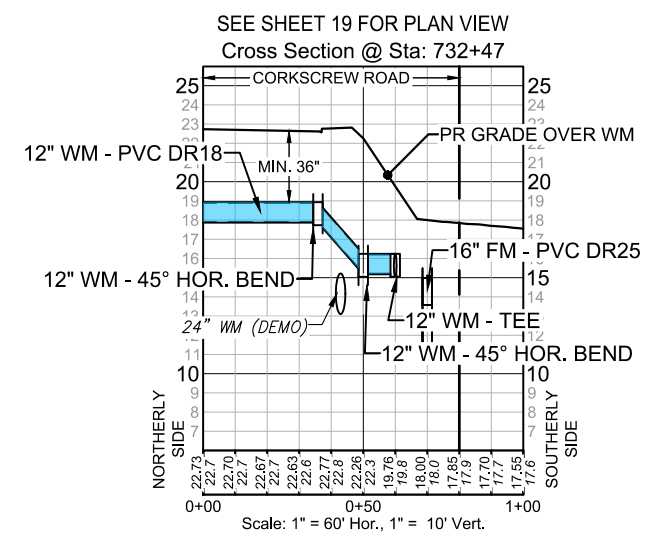
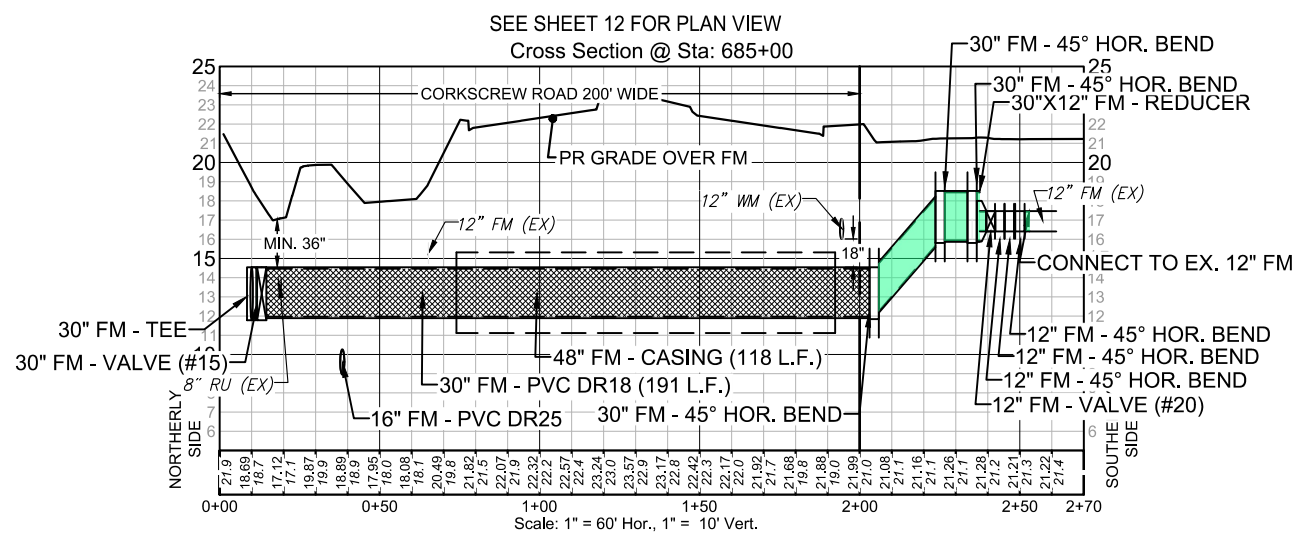
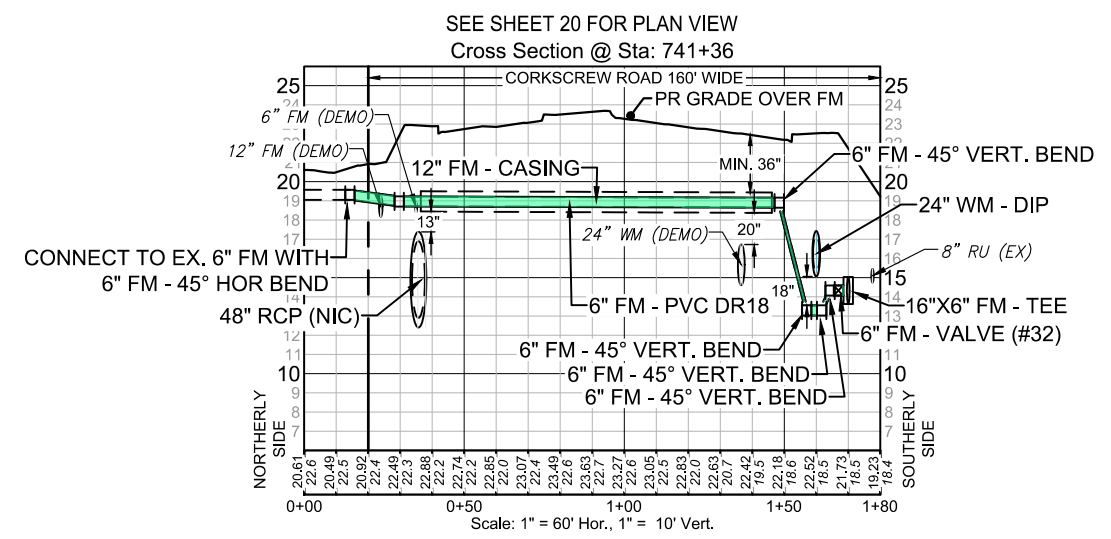
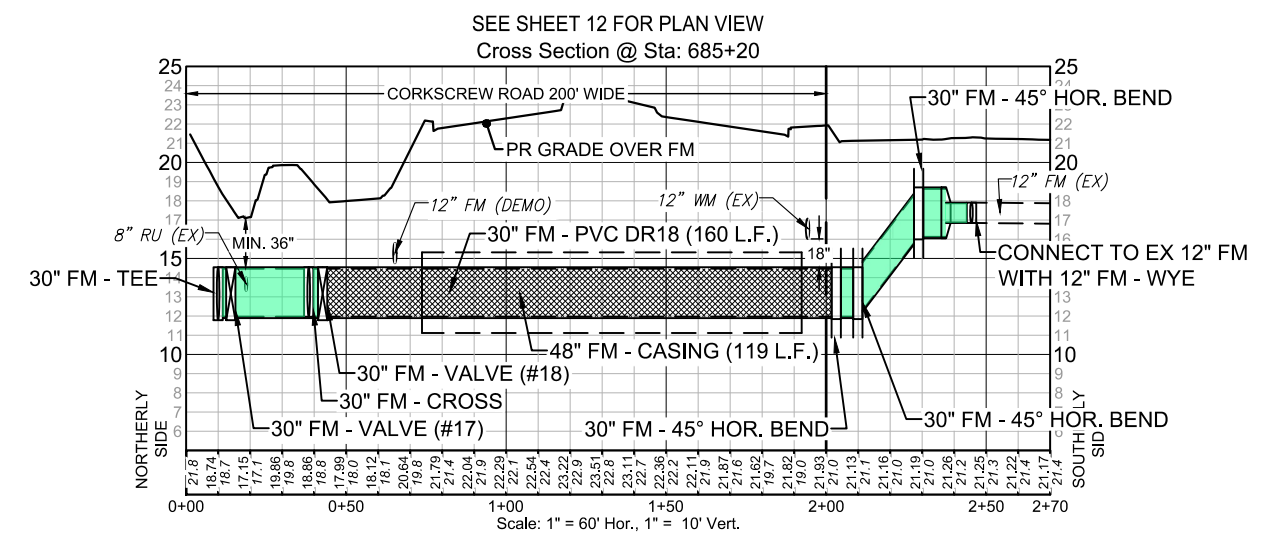


NORTHERLY SIDE OF CORKSCREW ROAD
 Scale: 1" = 60' Hor., 1" = 10' Vert.

Corkscrew Road (CL of Construction) Sta: 765+50 to Sta: 772+50



SOUTHERLY SIDE OF CORKSCREW ROAD
 Scale: 1" = 60' Hor., 1" = 10' Vert.



NO.	REVISIONS DESCRIPTION	DATE

DATE: December 4, 2020
 PROJECT NO.: 20192030-000
 FILE NO.: 25-46-25
 SCALE: As Shown

DAVID BRICE TROUTEAUX, PE
 FL License No. 69783

LEE COUNTY

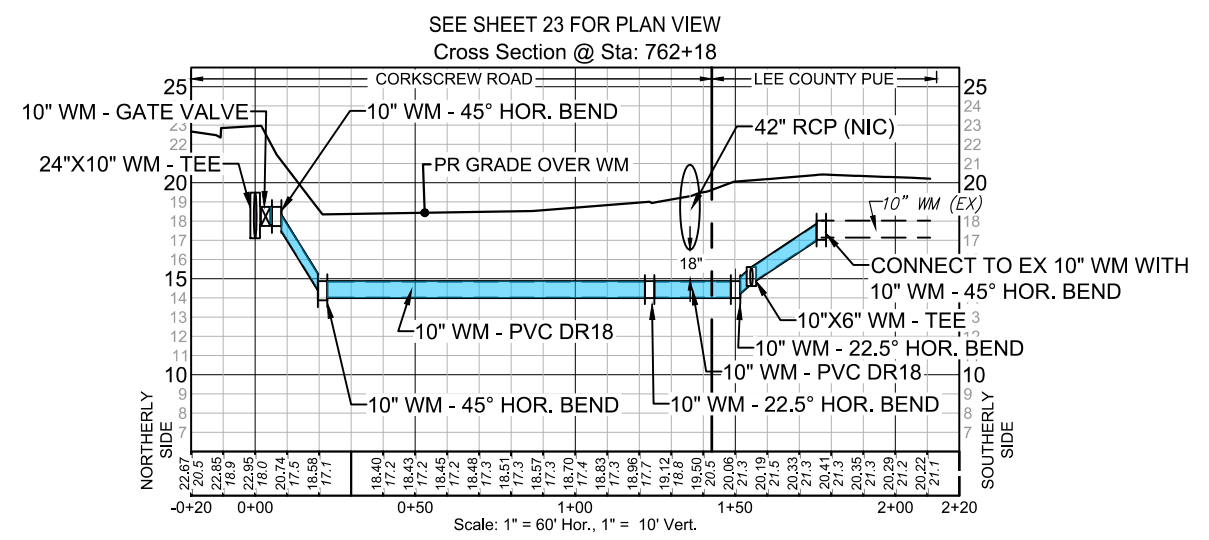
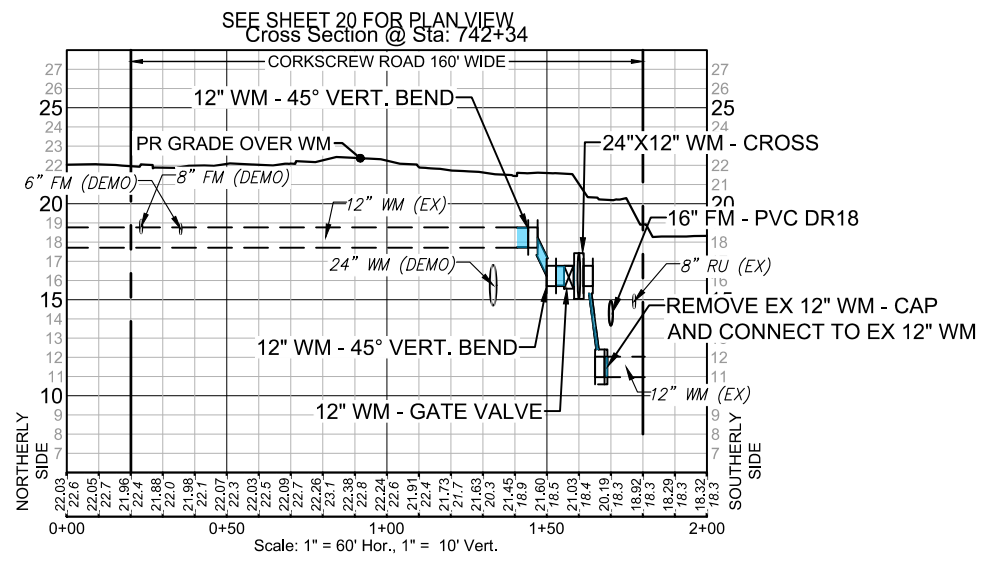
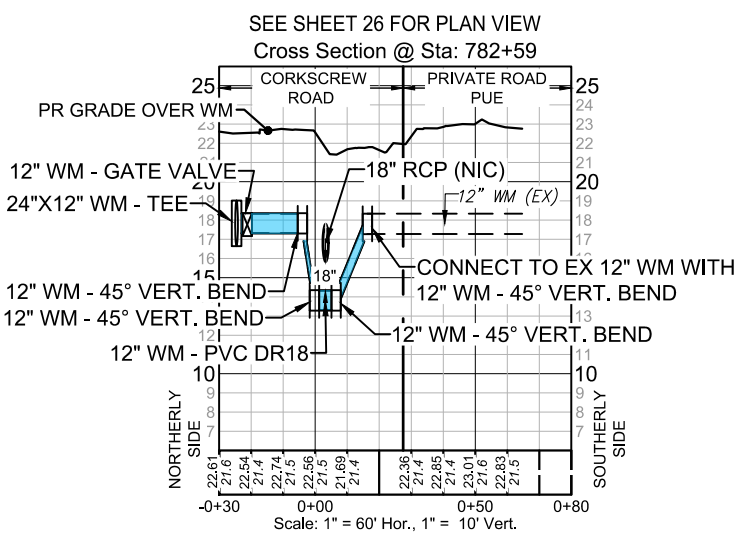
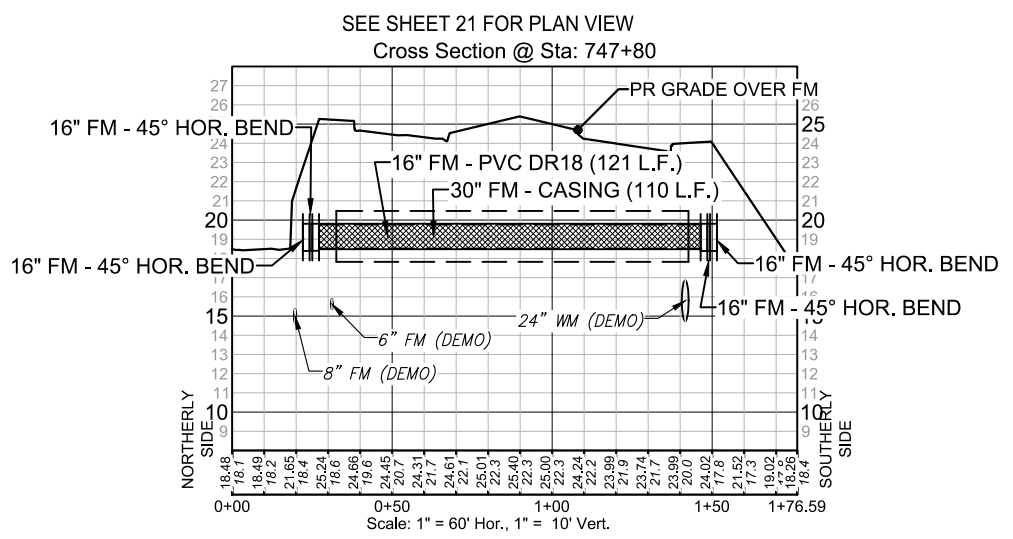
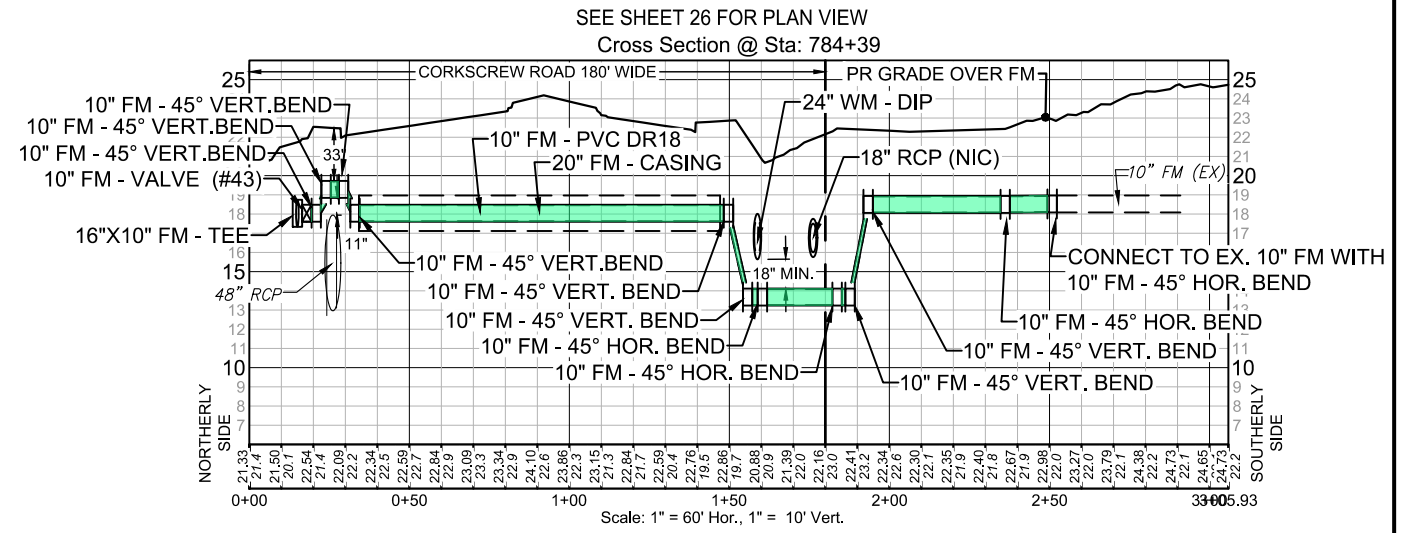
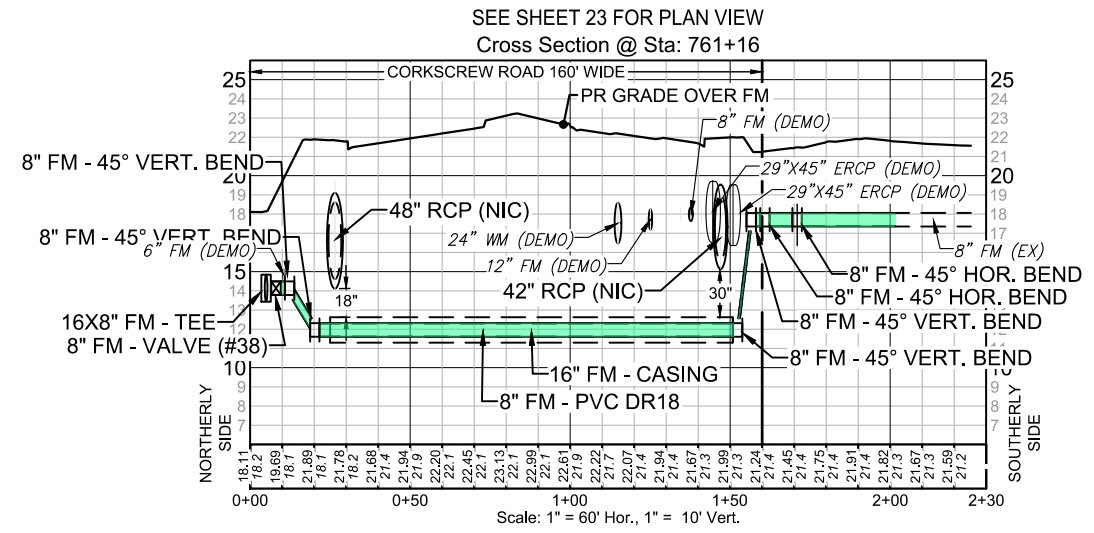
Corkscrew Utilities Relocation (Phase 1)
 LEE COUNTY, FLORIDA

NO.	DESCRIPTION	DATE

DATE: December 4, 2020
 PROJECT NO. 20192030-000
 FILE NO. 25-46-25
 SCALE: As Shown

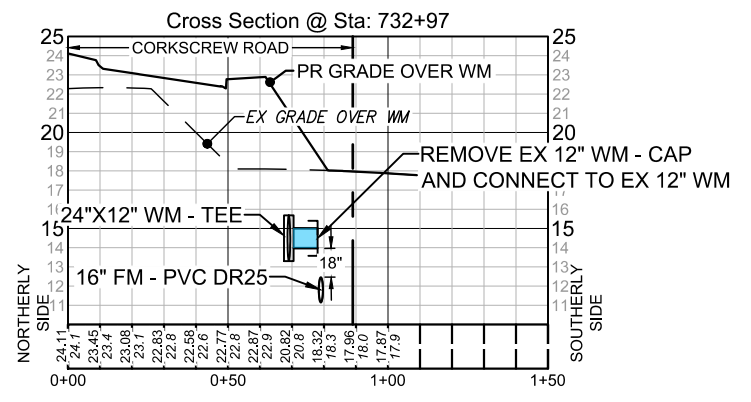
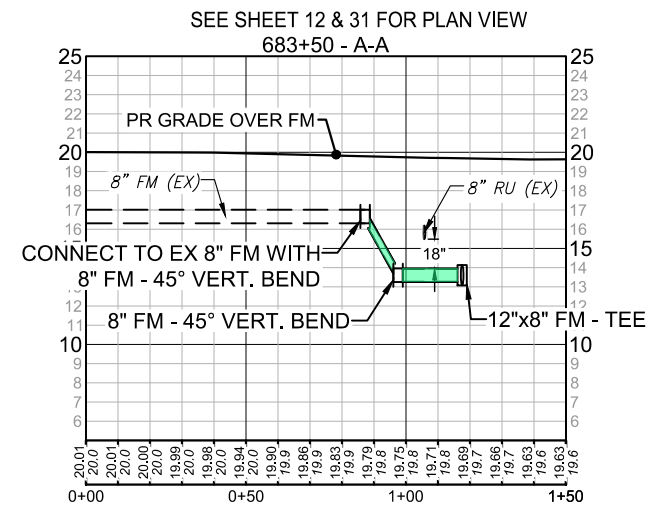
Cross Sections 2 of 3

SHEET NUMBER



REVISIONS	DESCRIPTION	DATE

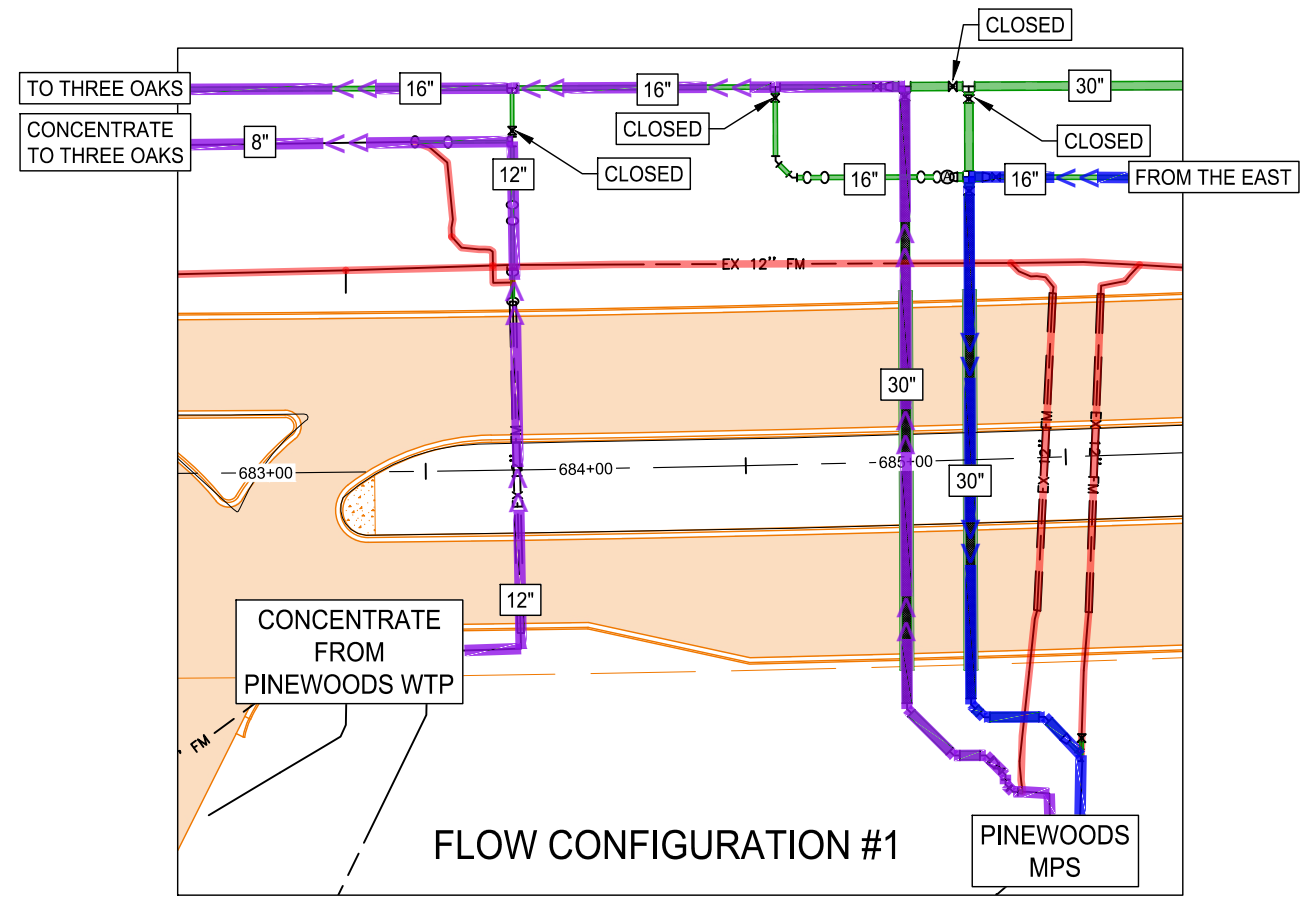
DATE: December 4, 2020
 PROJECT NO. 20192030-000
 FILE NO. 25-46-25
 SCALE: As Shown



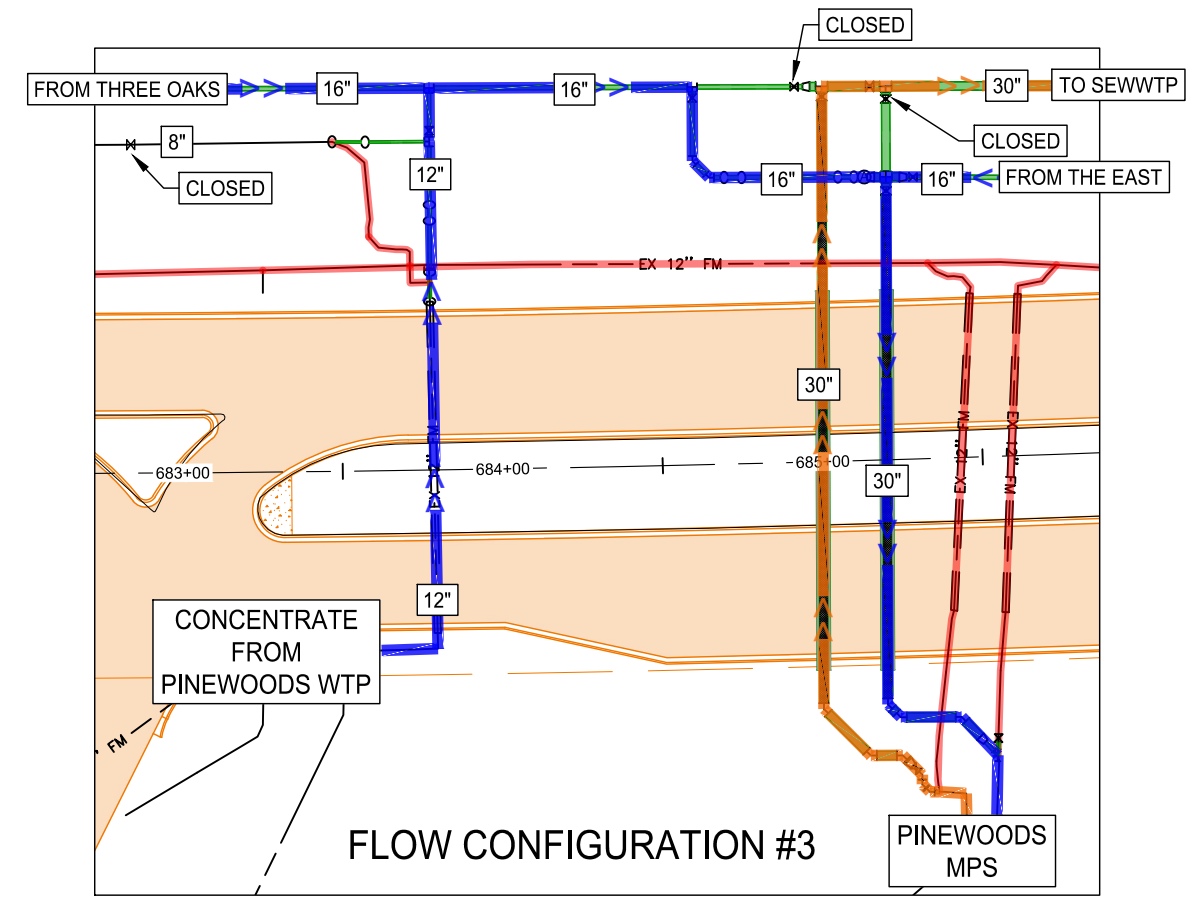
NO.	DATE	REVISIONS DESCRIPTION

DATE: December 4, 2020
 PROJECT NO.: 20192030-000
 FILE NO.: 25-46-25
 SCALE: As Shown

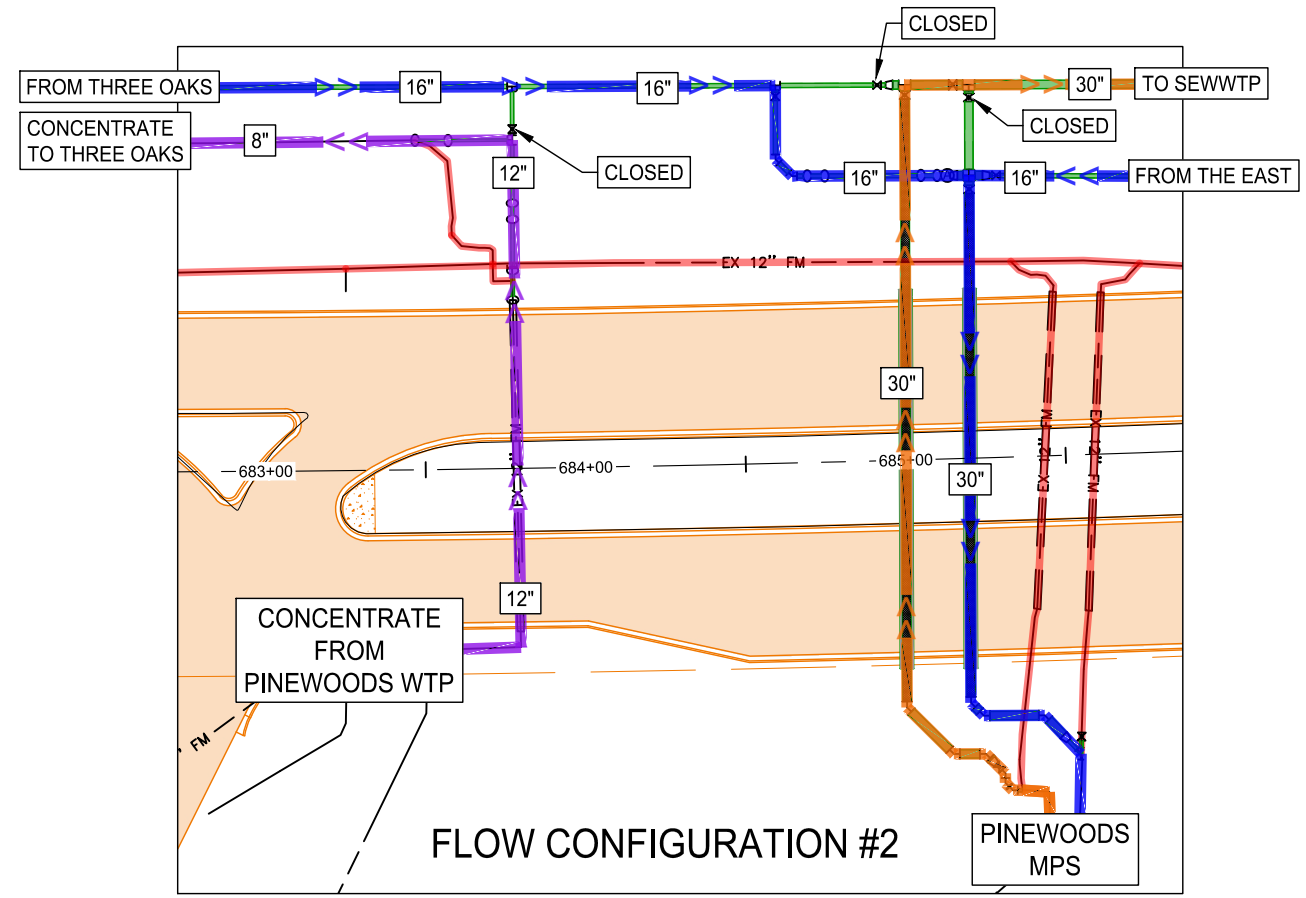
Pinewoods Flow Configuration Exhibit



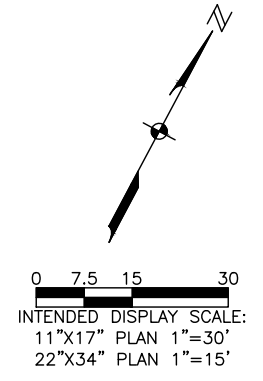
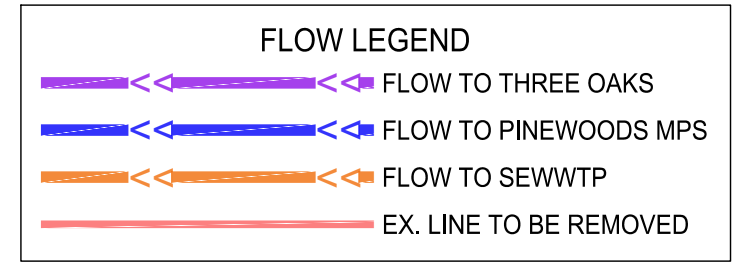
FLOW CONFIGURATION #1



FLOW CONFIGURATION #3



FLOW CONFIGURATION #2



CP-UT-FM (PH1)			
VALVE NUMBER	PLAN DESCRIPTION	STATION / OFFSET	NORTHING EASTING
PV-1	16" FM - VALVE (#1)	637+97.26 -71.39	764403.03 731440.87
PV-2	CONNECT TO EX 12" FM WITH 12" - VALVE (#2)	638+59.96 -71.33	764432.62 731496.14
PV-3	4" FM - VALVE (#3)	643+82.04 75.35	764550.30 732025.52
PV-4	16" FM - VALVE (#4)	643+85.31 90.00	764538.94 732035.33
PV-5	16" FM - VALVE (#5)	648+50.28 -93.88	764918.39 732361.67
PV-6	16" FM - VALVE (#6)	655+52.42 -116.57	765250.44 732980.32
PV-7	8" FM - VALVE (#7)	663+44.21 -117.07	765621.17 733677.19
PV-8	16" FM - VALVE (#8)	663+47.05 -120.00	765625.09 733678.31
PV-9	6" FM - VALVE (#9)	672+56.84 -123.25	766058.22 734478.39
PV-10	16" FM - VALVE (#10)	672+59.92 -120.00	766056.81 734482.64
PV-11	16" FM - VALVE (#11)	679+14.40 -120.00	766366.33 735059.30
PV-12	12" FM - VALVE (#12)	683+78.61 -106.05	766573.58 735473.53
PV-13	16" FM - VALVE (#13)	684+61.92 -114.70	766621.23 735541.30
PV-14	16" FM - VALVE (#14)	684+94.17 -117.39	766639.24 735567.74
PV-15	30" FM - VALVE (#15)	685+02.82 -114.05	766640.55 735576.83
PV-16	30" FM - VALVE (#16)	685+18.07 -116.81	766650.41 735588.56
PV-17	30" FM - VALVE (#17)	685+23.02 -112.71	766649.27 735594.85
PV-18	30" FM - VALVE (#18)	685+22.27 -84.04	766624.00 735608.41
PV-19	16" FM - VALVE (#19)	685+30.90 -88.09	766631.76 735613.83
PV-20	12" FM - VALVE (#20)	685+26.26 96.68	766469.03 735701.45
PV-21	12" FM - VALVE (#21)	685+52.07 87.99	766489.51 735719.74
PV-22	6" FM - VALVE (#22)	690+92.08 -76.26	766911.02 736097.53
PV-23	16" FM - VALVE (#23)	690+94.89 -72.77	766909.52 736101.77
PV-24	30" FM - VALVE (#24)	691+23.33 -85.53	766935.37 736119.55
PV-25	8" FM - VALVE (#25)	691+17.06 -69.03	766918.00 736122.76
PV-26	16" FM - VALVE (#26)	691+20.74 -72.45	766922.85 736124.14

CP-UT-FM (PH1)			
VALVE NUMBER	PLAN DESCRIPTION	STATION / OFFSET	NORTHING EASTING
PV-27	16" FM - VALVE (#27)	699+91.96 -66.72	767345.30 736890.44
PV-28	16" FM - VALVE (#28)	709+28.54 -66.99	767788.37 737715.59
PV-29	16" FM - VALVE (#29)	718+98.71 -63.05	768243.61 738572.33
PV-30	16" FM - VALVE (#30)	729+13.32 -50.50	768704.62 739476.86
PV-31	16" FM - VALVE (#31)	732+04.88 72.91	768731.68 739792.71
PV-32	6" FM - VALVE (#32)	741+21.32 75.93	769162.32 740601.67
PV-33	16" FM - VALVE (#33)	741+24.78 79.00	769161.25 740606.17
PV-36	16" FM - VALVE (#36)	748+22.48 -64.34	769617.60 741154.54
PV-37	16" FM - VALVE (#37)	758+72.38 -65.00	769895.07 742186.53
PV-38	8" FM - VALVE (#38)	761+16.47 -71.91	769916.68 742429.75
PV-39	16" FM - VALVE (#39)	761+19.71 -75.00	769919.96 742432.80
PV-40	16" FM - VALVE (#40)	771+06.77 -75.00	769979.46 743418.07
PV-41	6" FM - VALVE (#41)	782+56.71 -73.59	770041.93 744566.76
PV-42	16" FM - VALVE (#42)	782+59.66 -70.50	770039.00 744569.88
PV-43	10" FM - VALVE (#43)	784+37.93 -68.67	770046.84 744747.98
PV-44	16" FM - VALVE (#44)	784+41.08 -71.60	770049.94 744750.97
PV-45	16" FM - VALVE (#45)	794+06.58 -73.73	770108.09 745714.04
PV-46	10" FM - VALVE (#46)	799+38.84 -68.69	770136.81 746245.54
PV-47	CONNECT TO EX. 10" FM - VALVE (#47)	799+38.52 -43.64	770111.79 746246.81
PV-48	16" FM - VALVE (#48)	799+44.68 -72.05	770140.53 746251.16
PV-49	CONNECT TO EX. 10" FM WITH 10" FM - VALVE (#49)	799+44.96 -50.70	770119.24 746252.79
PV-50	16" FM - VALVE (#50)	637+71.85 -71.42	764391.04 731418.47
PV-51	CONNECT TO EX. 12" FM WITH 12" FM - VALVE (#51)	637+68.24 -75.00	764392.48 731413.59
PV-52	CONNECT TO EX. 12" FM WITH 12" FM - VALVE (#52)	637+93.75 -75.01	764404.56 731436.07

NO.	REVISIONS DESCRIPTION	DATE

DATE: December 4, 2020
 PROJECT NO. 20192030-000
 FILE NO. 25-46-25
 SCALE: As Shown

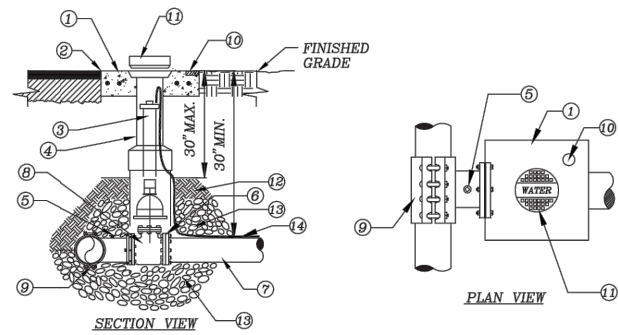
Force Main Valves

SHEET NUMBER

T-01

**STANDARD DETAIL NO. 6.1
LEE COUNTY UTILITIES
TAPPING SLEEVE AND VALVE**

N.T.S.

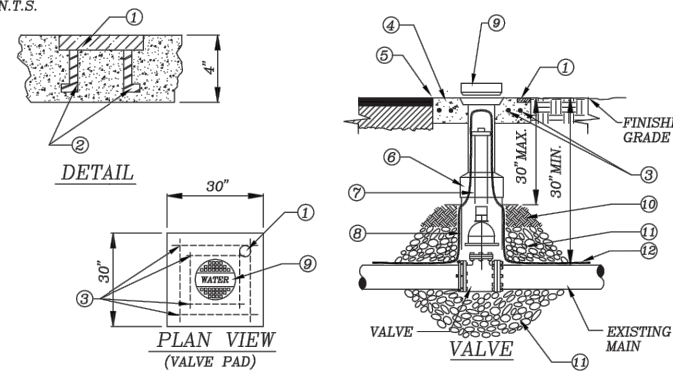


- ① CONCRETE PAD (SEE VALVE INSTALLATION DETAIL)
- ② SET TOP OF BOX FLUSH WITH FINISHED GRADE
- ③ EXTENSION STEM IF TOP OF OPERATING NUT IS MORE THAN 30" BELOW FINISH GRADE
- ④ VALVE BOX (SEE VALVE INSTALLATION DETAIL)
- ⑤ OUTLET FOR TESTING
- ⑥ MJ RESTRAINED
- ⑦ MAIN SIZE VARIES
- ⑧ TAPPING VALVE (SEE VALVE INSTALLATION DETAIL)
- ⑨ LCU APPROVED ALL STAINLESS STEEL PRESSURE RATED TAPPING SLEEVE. FOR SIZE ON SIZE TAPS A FLANGED TAPPING SLEEVE IS REQUIRED. SPRING LOADED TAPPING SLEEVE IS REQUIRED WHEN CONNECTING TO HDPE (SEE APPROVED MATERIAL LIST).
- ⑩ BRASS PLATE (SEE VALVE INSTALLATION DETAIL)
- ⑪ CAST IRON DROP COVER MARKED "WATER", "SEWER", OR "REUSE"
- ⑫ COMPACTED SUITABLE EARTH BACKFILL
- ⑬ 3/4" GRANULAR MATERIAL #57 STONE
- ⑭ 12 GAUGE DOUBLE INSULATED COPPER LOCATING WIRE (SEE LCU STANDARD DETAIL)

REV: 12/10/2015

**STANDARD DETAIL NO. 6.2
LEE COUNTY UTILITIES
VALVE INSTALLATION**

N.T.S.

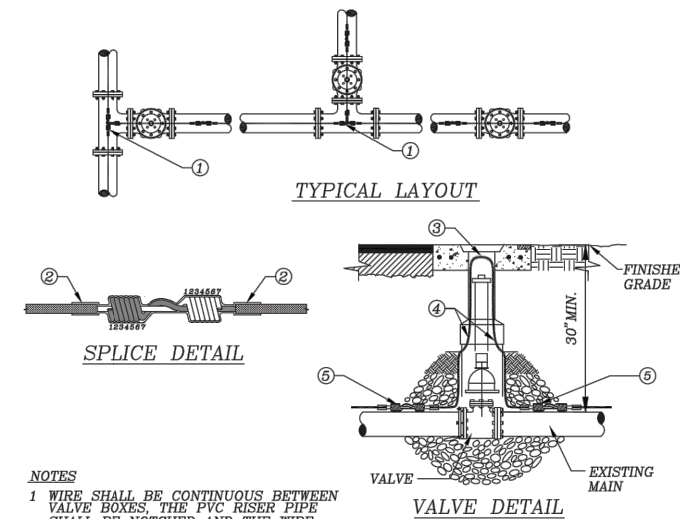


- ① BRASS PLATE: SIZE OF VALVE, VALVE TYPE No. OF TURNS & DIRECTION TO OPEN VALVE M.F.G. & YEAR INSTALL SYSTEM "WATER" OR "SEWER" OR "REUSE" OR "FIRE"
- ② ANCHOR
- ③ EIGHT (8) #4 BARS OVERLAP EACH CORNER BY 2"
- ④ 30" SQ X 4" THK. CONC. PAD SURROUNDING BOX, MIN. 3,000 P.S.I. POURED IN PLACE
- ⑤ SET TOP OF BOX FLUSH WITH FINISHED GRADE
- ⑥ HEAVY DUTY TRAFFIC BEARING CAST IRON VALVE BOX, ADJUSTABLE SCREW TYPE, 5 1/4" DIAMETER SHAFT THAT IS LCU APPROVED
- ⑦ EXTENSION STEM WITH 2" OPERATING NUT AS REQUIRED, IF NUT IS MORE THAN 30" BELOW FINISH GRADE
- ⑧ RISER NOT TO BEAR ON VALVE OR PIPE
- ⑨ CAST IRON DROP COVER MARKED "WATER" OR "SEWER" OR "REUSE" OR "FIRE"
- ⑩ COMPACTED SUITABLE EARTH BACKFILL
- ⑪ 3/4" GRANULAR MATERIAL #57 STONE
- ⑫ 12 GAUGE DOUBLE INSULATED COPPER LOCATING WIRE (SEE LCU STANDARD DETAIL)

REV: 12/10/2015

**STANDARD DETAIL NO. 6.3
LEE COUNTY UTILITIES
LOCATING WIRE FOR PRESSURE MAINS**

N.T.S.



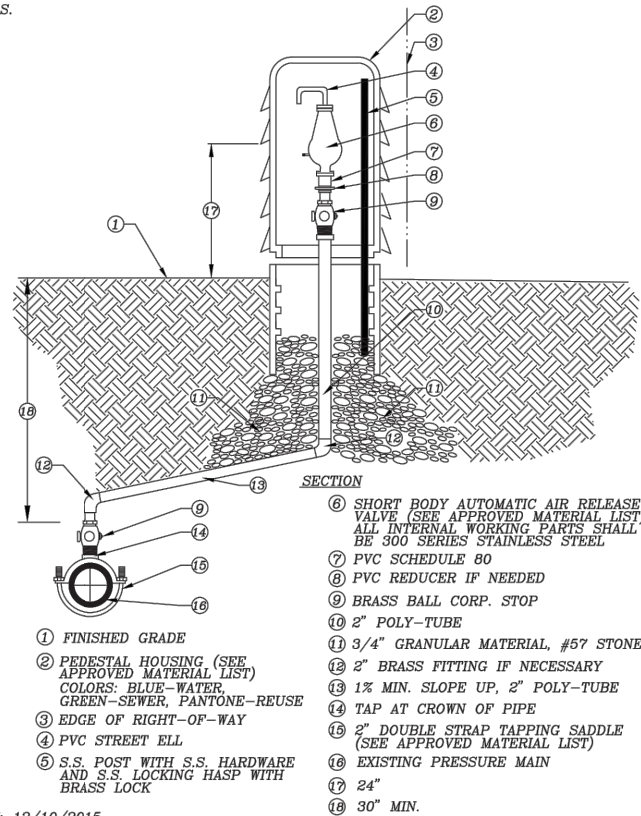
NOTES

- 1 WIRE SHALL BE CONTINUOUS BETWEEN VALVE BOXES. THE PVC RISER PIPE SHALL BE NOTCHED AND THE WIRE ATTACHED TO THE RISER PIPE TO ALLOW FOR THE WIRE TO FIT INSIDE THE CAST IRON VALVE BOX WITHOUT SHEARING THE WIRE.
- 2 LOCATING WIRE SHALL BE LAID ON TOP OF THE MAIN AND SHALL BE TAPED TO IT AT 10' INTERVALS AND TAPED AT ALL FITTINGS. TAPE SHALL BE 10 MIL POLYETHYLENE.
- 3 CONTRACTOR SHALL CONDUCT A CONTINUITY TEST ON ALL LOCATING WIRE SPLICES PRIOR TO SCHEDULING THE OFFICIAL FINAL INSPECTION WITH LCU.
- 4 ALL SPLICES SHALL UTILIZE A DIRECT BURY WATERPROOF SPLICE KIT (SEE APPROVED MATERIAL LIST)
- ① SPLICE RUN TOGETHER, KEEP CLEAR OF FITTING, TYPICAL
- ② COVER SPLICE WITH 2 WRAPS OF 10 MIL POLYETHYLENE TAPE
- ③ 6" LOOP OF BARE WIRE, 9" MAX. DEPTH TO TOP OF BARE WIRE
- ④ 12 GAUGE DOUBLE INSULATED COPPER LOCATING WIRE
- ⑤ SPLICE (SEE DETAIL THIS SHEET)

REV: 12/10/2015

**STANDARD DETAIL NO. 6.4
LEE COUNTY UTILITIES
AUTOMATIC AIR RELEASE VALVE**

N.T.S.

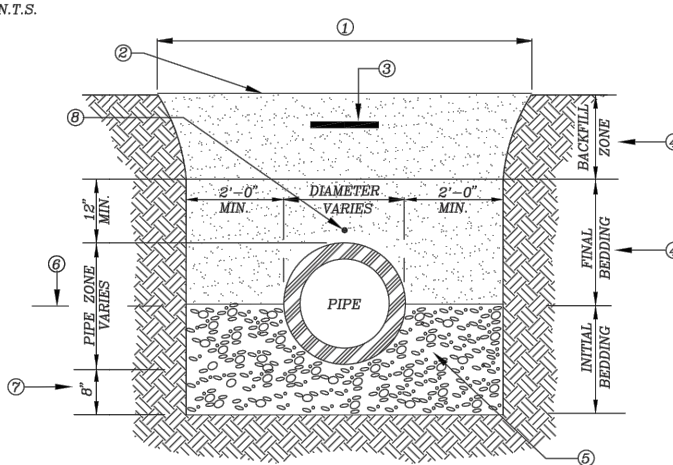


- ⑥ SHORT BODY AUTOMATIC AIR RELEASE VALVE (SEE APPROVED MATERIAL LIST) ALL INTERNAL WORKING PARTS SHALL BE 300 SERIES STAINLESS STEEL
- ⑦ PVC SCHEDULE 80
- ⑧ PVC REDUCER IF NEEDED
- ⑨ BRASS BALL CORP. STOP
- ⑩ 2" POLY-TUBE
- ⑪ 3/4" GRANULAR MATERIAL, #57 STONE
- ⑫ 2" BRASS FITTING IF NECESSARY
- ⑬ 1% MIN. SLOPE UP, 2" POLY-TUBE
- ⑭ TAP AT CROWN OF PIPE
- ⑮ 2" DOUBLE STRAP TAPPING SADDLE (SEE APPROVED MATERIAL LIST)
- ⑯ EXISTING PRESSURE MAIN
- ⑰ 24"
- ⑱ 30" MIN.

REV: 12/10/2015

**STANDARD DETAIL NO. 6.5
LEE COUNTY UTILITIES
TRENCH CROSS SECTION**

N.T.S.

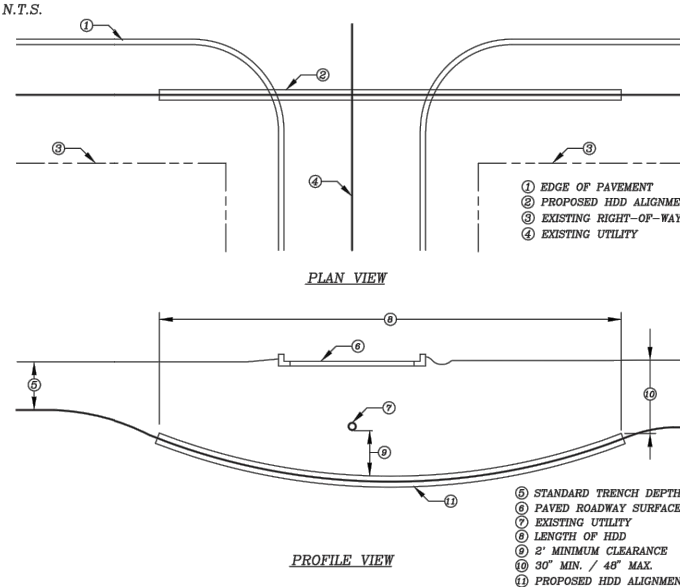


- ① EXCAVATED TRENCH
- ② FINISHED GRADE
- ③ MARKING TAPE 12" DEPTH MAX.
- ④ MATERIALS CLEAN DRY SAND, FINE LIME ROCK OR PIT SHELL MECHANICALLY COMPACTED IN 6" LIFTS TO AT LEAST 95% OF MAX. DENSITY, OR 98% IF UNDER PAVED AREA OF ROADWAY.
- ⑤ #57 STONE LOCATED UNDER PIPE OR EXISTING UNDISTURBED SUITABLE MATERIAL
- ⑥ SPRING LINE
- ⑦ STANDARD 8" MIN TRENCH UNDERCUT AND BACKFILL WITH #57 STONE COMPACTED IN 6" LIFTS
- ⑧ ADDITIONAL UNDERCUT AND CRUSHED ROCK BEDDING FOUNDATION WHEN DIRECTED BY L.C.U. THE CONTRACTOR IS TO REMOVE UNSTABLE MATERIAL FROM THE TRENCH FOUNDATION. THEN INSTALL STABILIZED CRUSHED ROCK BACKFILL WITH #57 STONE COMPACTED IN 6" LIFTS
- ⑨ LOCATING WIRE IS REQUIRED FOR ALL PRESSURIZED PIPELINES.

REV: 12/10/2015

**STANDARD DETAIL NO. 6.7
LEE COUNTY UTILITIES
HORIZONTAL DIRECTIONAL DRILL UNDER A ROADWAY**

N.T.S.



HDD INSTALLATION NOTES:

- 1. ALL WORK SHALL BE IN ACCORDANCE WITH THE LEE COUNTY UTILITIES DESIGN MANUAL.
- 2. THE CONTRACTOR SHALL BE RESPONSIBLE FOR NOTIFICATION OF AFFECTED AGENCIES AND COORDINATION WITH ALL UTILITIES PRIOR TO CONSTRUCTION.
- 3. ALL CONSTRUCTION MATERIALS, INCLUDING DRILLING FLUID, SHALL BE REMOVED FROM THE SITE PRIOR TO RESTORATION OF DISTURBED AREAS.
- 4. ALL RESTORATION WORK SHALL BE IN ACCORDANCE WITH THE LCU DESIGN MANUAL.
- 5. CASING DIAMETER SHALL BE IN ACCORDANCE WITH THE LCU DESIGN MANUAL.
- 6. NO CASING SPACERS REQUIRED.
- 7. WHEN CASING IS REQUIRED INSTALL 1" HDPE PIPE ATTACHED TO THE CARRIER PIPE WITH 12 GAUGE DOUBLE INSULATED COPPER WIRE INSIDE THE HDPE PIPE.

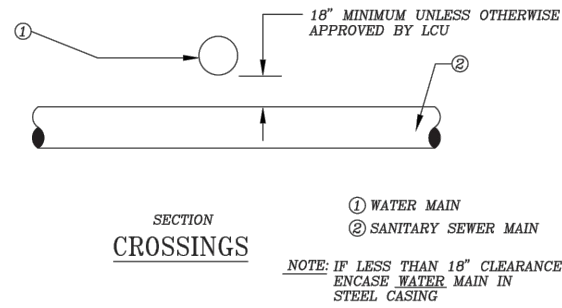
REV: 12/10/2015

NO.	DATE	DESCRIPTION

DATE: December 4, 2020
PROJECT NO. 20192030-000
FILE NO. 25-46-25
SCALE: As Shown

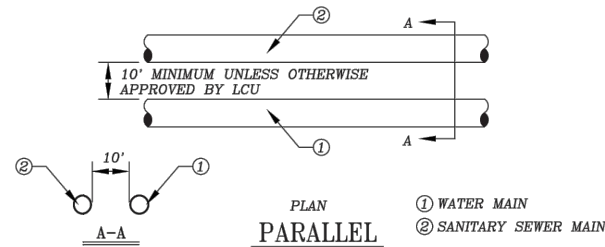
**STANDARD DETAIL NO. 6.8
LEE COUNTY UTILITIES
WATER AND SEWER CROSSING DETAIL**

N.T.S.



① WATER MAIN
② SANITARY SEWER MAIN
NOTE: IF LESS THAN 18" CLEARANCE ENCASE WATER MAIN IN STEEL CASING

N.T.S.

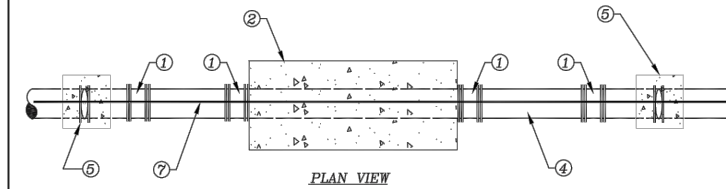
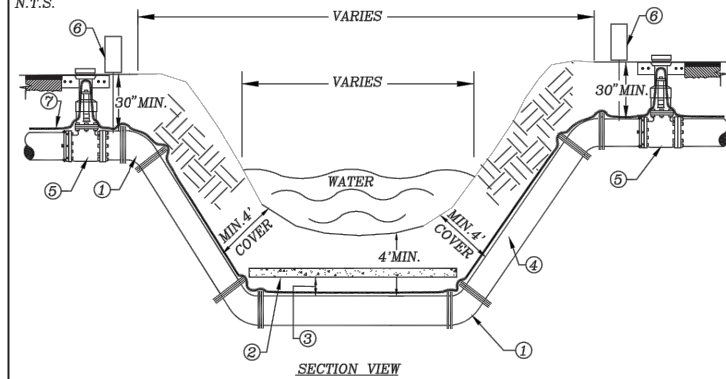


① WATER MAIN
② SANITARY SEWER MAIN
NOTE: IF LESS THAN 10' CLEARANCE ENCASE WATER MAIN IN STEEL CASING

REV: 12/10/2015

**STANDARD DETAIL NO. 6.9
LEE COUNTY UTILITIES
SUBAQUEOUS CROSSING**

N.T.S.

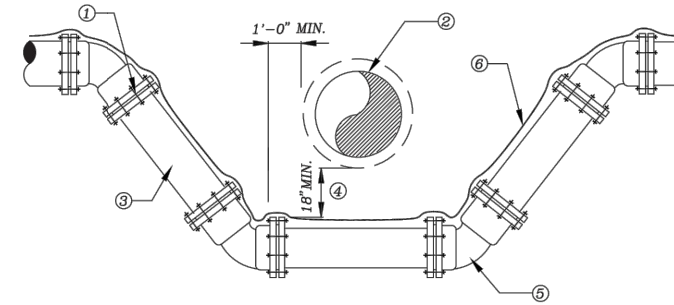


- ① 45° M.J. ELBOW RESTRAINED
- ② 2,500 MIN. P.S.I. CONCRETE PROTECTIVE PAD 4" WIDE MIN. X 4" THICK X OVERALL LENGTH OF PIPELINE CROSSING
- ③ 6" MIN. COMPACTED MATERIAL OR #57 STONE
- ④ USE PVC C-900 DR 14 MIN. FOR ALL SEWAGE FORCE MAINS. USE PRESSURE CLASS 350 DIP FOR ALL WATER MAINS
- ⑤ GATE VALVE OR PLUG VALVE INSTALLATION PER LCU STANDARD DETAIL
- ⑥ AIR RELEASE VALVE (SEE APPROVED MATERIAL LIST)
- ⑦ 12 GAUGE DOUBLE INSULATED COPPER LOCATING WIRE (SEE LCU STANDARD DETAIL)

REV: 12/10/2015

**STANDARD DETAIL NO. 6.10
LEE COUNTY UTILITIES
WATER PRESSURE LINE VERTICAL OFFSET
W/ DUCTILE IRON MJ FITTINGS & PIPE**

N.T.S.

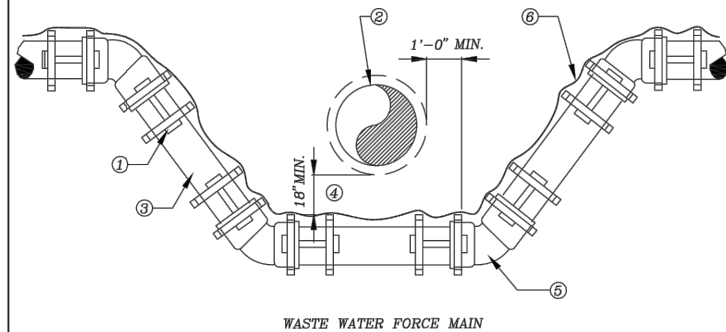


- ① LCU APPROVED JOINT RESTRAINT FOR D.I. M.J. PIPE AND FITTINGS PLACED IN ACCORDANCE WITH JOINT RESTRAINT SCHEDULE. (SEE DETAIL 6.12)
- ② CONFLICT PIPE
- ③ LCU APPROVED DUCTILE IRON PIPING PRESSURE CLASS 350
- ④ 18" MIN. UNLESS OTHERWISE APPROVED BY LCU
- ⑤ 45° MECHANICAL JOINT FITTING, TYPICAL
- ⑥ 12 GAUGE DOUBLE INSULATED COPPER WIRE (SEE LCU STANDARD DETAIL)

REV: 12/10/2015

**STANDARD DETAIL NO. 6.11
LEE COUNTY UTILITIES
WASTE WATER FORCE MAIN VERTICAL OFFSET
WITH FITTINGS. (P.V.C.)**

N.T.S.



- ① LCU APPROVED JOINT RESTRAINT FOR P.V.C., M.J. PIPE AND FITTINGS PLACED IN ACCORDANCE WITH JOINT RESTRAINT SCHEDULE. (SEE DETAIL 6.12)
- ② CONFLICT PIPE
- ③ LCU APPROVED C-900 PVC DR 14
- ④ 18" MIN. UNLESS OTHERWISE APPROVED BY LCU
- ⑤ 45° MECHANICAL JOINT FITTING, TYPICAL
- ⑥ 12 GAUGE DOUBLE INSULATED COPPER WIRE (SEE LCU STANDARD DETAIL)

REV: 12/10/2015

**STANDARD DETAIL NO. 6.12
LEE COUNTY UTILITIES
RESTRAINED LENGTH SCHEDULE**

N.T.S.

DUCTILE IRON PIPE

PIPE SIZE (Inches)	MINIMUM RESTRAINED PIPE LENGTH (FEET)					HORIZONTAL TEE
	90°	45°	22-1/2'	11-1/4'	DEAD END	
4	17	7	4	2	29	6
6	23	10	5	2	40	17
8	29	12	6	3	53	29
10	35	14	7	4	63	38
12	41	17	8	4	74	49
16	51	21	11	5	94	68
24	69	29	14	7	131	105
30	81	34	17	8	156	129

PVC PIPE

PIPE SIZE (Inches)	MINIMUM RESTRAINED PIPE LENGTH (FEET)					HORIZONTAL TEE
	90°	45°	22-1/2'	11-1/4'	DEAD END	
4	20	8	4	2	45	8
6	29	12	6	3	63	25
8	36	15	6	4	83	43
10	44	18	9	5	99	58
12	51	21	11	5	116	74
16	63	26	13	7	149	103
24	87	36	18	9	208	158
30	102	42	21	10	248	194

A COMPLETE JOINT RESTRAINING SCHEDULE FOR ALL ENCOUNTERED VERTICAL & HORIZONTAL BENDS, VERTICAL OFFSETS, TEES, AND DEAD ENDS SHALL BE THE RESPONSIBILITY OF THE DESIGN ENGINEER.

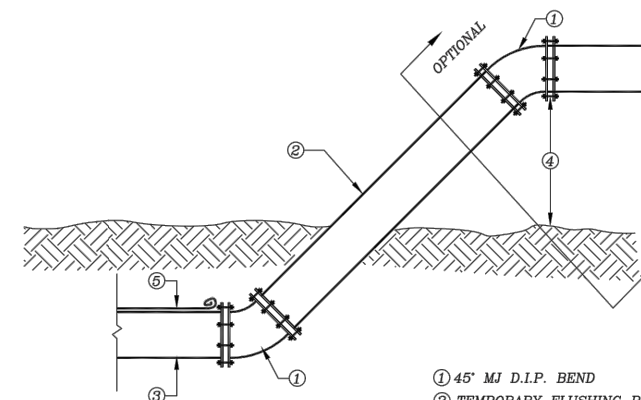
LENGTH FIGURES BASED ON FOLLOWING:

Pressure = 150 psi, FS = 1.5, trench type = 3, 30" cover on Bare pipe, Soil type = GP & SP

REV: 12/10/2015

**STANDARD DETAIL NO. 6.13
LEE COUNTY UTILITIES
WATER MAIN FLUSHING DETAIL**

N.T.S.



- ① 45° M.J. D.I.P. BEND
- ② TEMPORARY FLUSHING PIPE
- ③ END OF WATER MAIN
- ④ 24" MIN.

NOTES:

1. FLUSHING DETAIL TO BE USED ON WATER LINES 8" DIAMETER OR GREATER.
2. FLUSHING PIPE SHALL BE THE SAME DIAMETER AS WATER MAIN.
3. CONTRACTOR SHALL PROVIDE ADEQUATE DRAINAGE FOR FLUSHED WATER.
4. PROVIDE M.J. CAP IF ASSEMBLY IS LEFT IN PLACE UNATTENDED.
5. 12 GAUGE DOUBLE INSULATED COPPER LOCATING WIRE (SEE LCU STANDARD DETAIL)

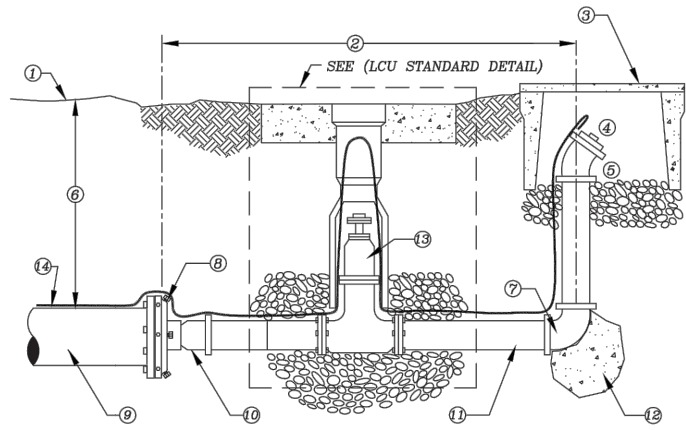
REV: 12/10/2015

NO.	DATE	DESCRIPTION

DATE: December 4, 2020
PROJECT NO. 20192030-000
FILE NO. 25-46-25
SCALE: As Shown

**STANDARD DETAIL NO. 6.14
LEE COUNTY UTILITIES
BLOW OFF DETAIL**

N.T.S.



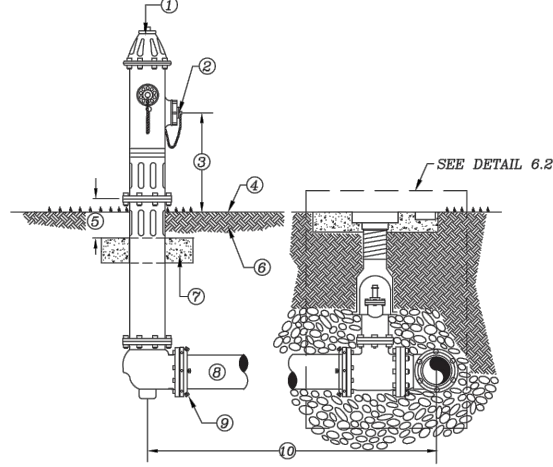
- ① FINISHED GRADE
- ② 5'-0" MAX.
- ③ WATER METER BOX W/ GRAVEL BOTTOM (SEE APPROVED MATERIAL LIST)
- ④ 2" THREADED PLUG
- ⑤ 2"-45° BEND
- ⑥ 30" MIN.
- ⑦ 2"-90° BEND
- ⑧ M.J. CAP WITH 2" TAP
- ⑨ END OF WATER MAIN, R.J. PER SCHEDULE
- ⑩ 2" THREADED
- ⑪ 2" P.V.C. (SCH 80) C. MALE ADAPTER
- ⑫ POURED IN PLACE THRUST BLOCKING (SEE DETAIL 9.20)
- ⑬ 2" DIAMETER GATE VALVE
- ⑭ 12 GAUGE DOUBLE INSULATED COPPER LOCATING WIRE (SEE LCU STANDARD DETAIL)

NOTE:
ALL PIPING TO BE 2" P.V.C. (SCH 80) THREADED FITTINGS OR SOLVENT WELDED FITTINGS

REV: 12/10/2015

**STANDARD DETAIL NO. 6.24
LEE COUNTY UTILITIES
FIRE HYDRANT ASSEMBLY**

N.T.S.

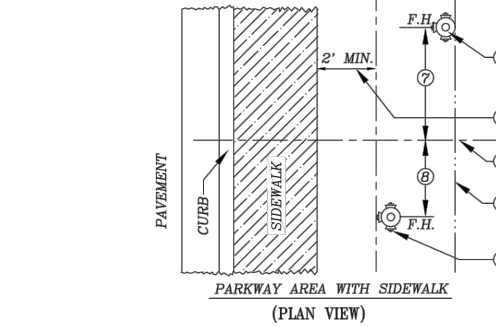


- ① FIRE HYDRANT: STANDARD A.W.W.A. SAFETY YELLOW (SEE APPROVED MATERIAL LIST)
- ② PUMPER CONNECTION FACING AS PER FIRE DISTRICT RECOMMENDATION
- ③ 18" MIN. - 24" MAX.
- ④ FINISHED GRADE
- ⑤ 6" MIN. CLEARANCE
- ⑥ COMPACTED FILL
- ⑦ 30" X 30" X 4" CONCRETE BREAK AWAY CONCRETE PAD, 3000 P.S.I.
- ⑧ PIPE TO BE D.I.P., PRESSURE CLASS 350
- ⑨ RESTRAINED JOINTS, FROM HYDRANT TO WATER MAIN
- ⑩ VARIABLE DISTANCE, IF GREATER THAN 100' A VALVE SHALL BE INSTALLED AT HYDRANT BASE

REV: 12/10/2015

**STANDARD DETAIL NO. 6.25
LEE COUNTY UTILITIES
FIRE HYDRANT LOCATIONS/CLEARANCE**

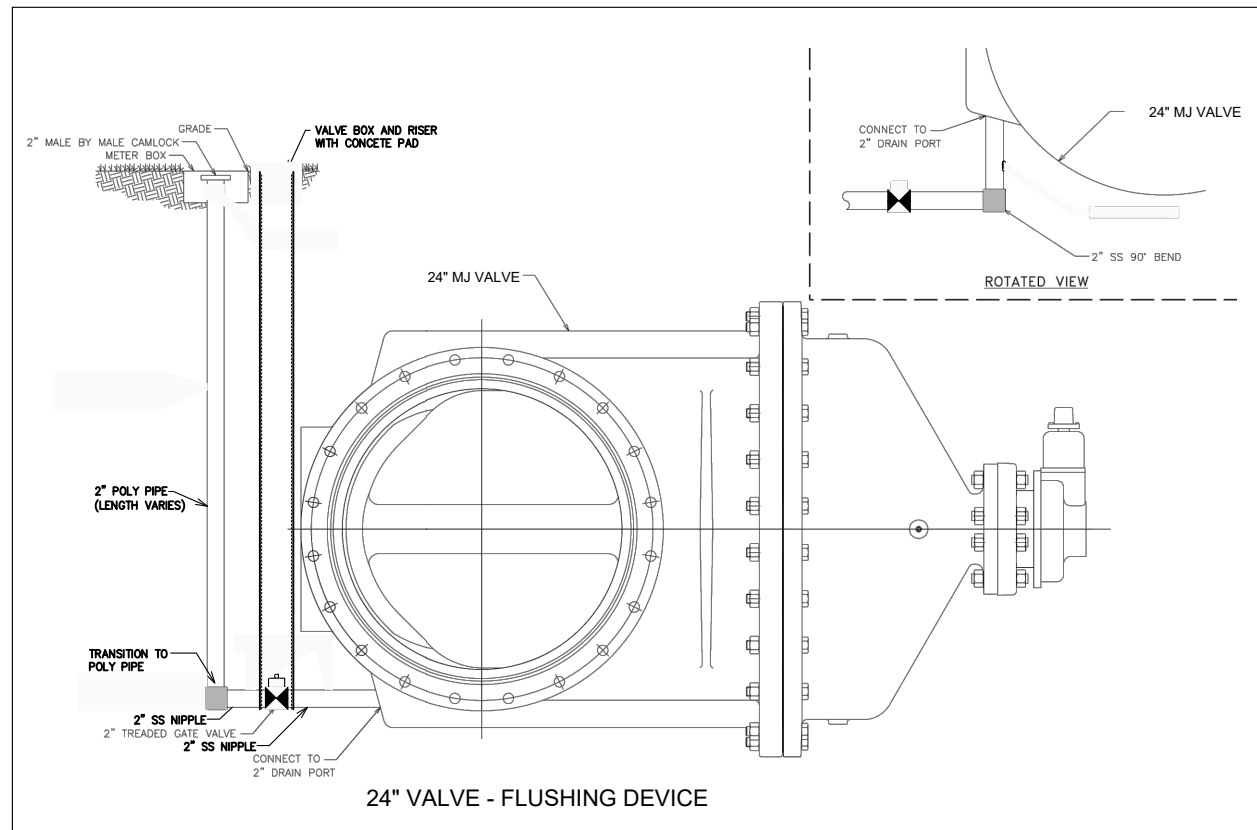
N.T.S.



- ① PREFERRED LOCATION
- ② F.H. TO BE LOCATED 2' MINIMUM FROM EDGE OF SIDEWALK
- ③ P.T. OR P.C. OF CURB RETURN
- ④ PROPERTY LINE RIGHT-OF-WAY OR LIMIT OF EASEMENT
- ⑤ ACCEPTABLE LOCATION WITH CURB RADIUS OF 20' OR MORE
- ⑥ BETWEEN 2'-0" MIN. AND 6'-0" MAX.
- ⑦ 6'-0"
- ⑧ 4'-0"

NOTES
1. OBSTRUCTIONS SUCH AS UTILITY POLES, STREET SIGNS, IRRIGATION BOXES, FENCES, ETC. SHALL NOT BE PLACED BETWEEN CURB AND HYDRANT.
2. SOME LOCATIONS APPLY AT EITHER END OF CURB RETURNS.
3. DIMENSION SHOWN ON CONSTRUCTION DRAWINGS SUPERCEDE LOCATIONS SHOWN HERE.

REV: 12/10/2015



24" VALVE - FLUSHING DEVICE

NO.	REVISIONS DESCRIPTION	DATE

DATE: December 4, 2020
PROJECT NO. 20192030-000
FILE NO. 25-46-25
SCALE: As Shown