

*LEE COUNTY PUBLIC WORKS
DEPARTMENT OF TRANSPORTATION*

CORKSCREW ROAD WIDENING - PHASE 2

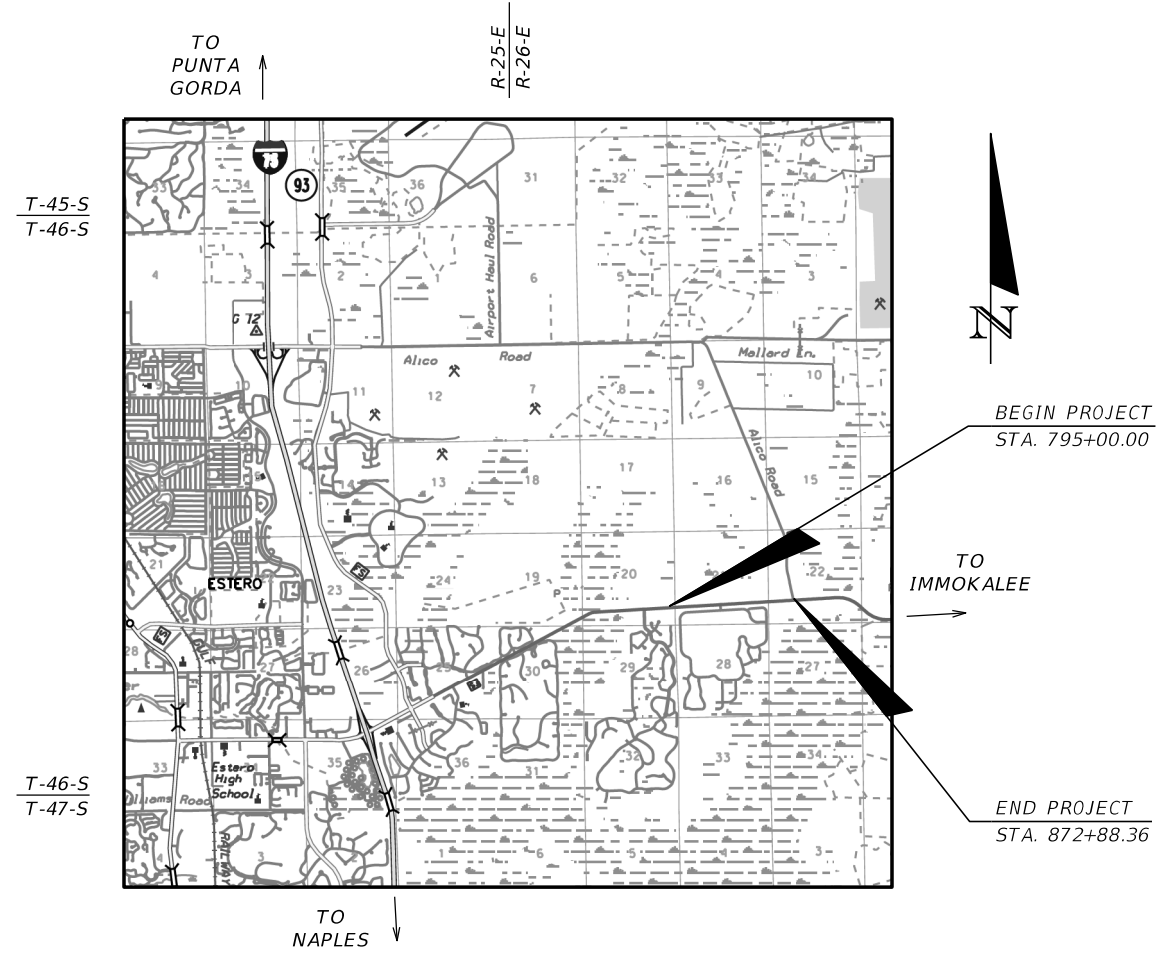
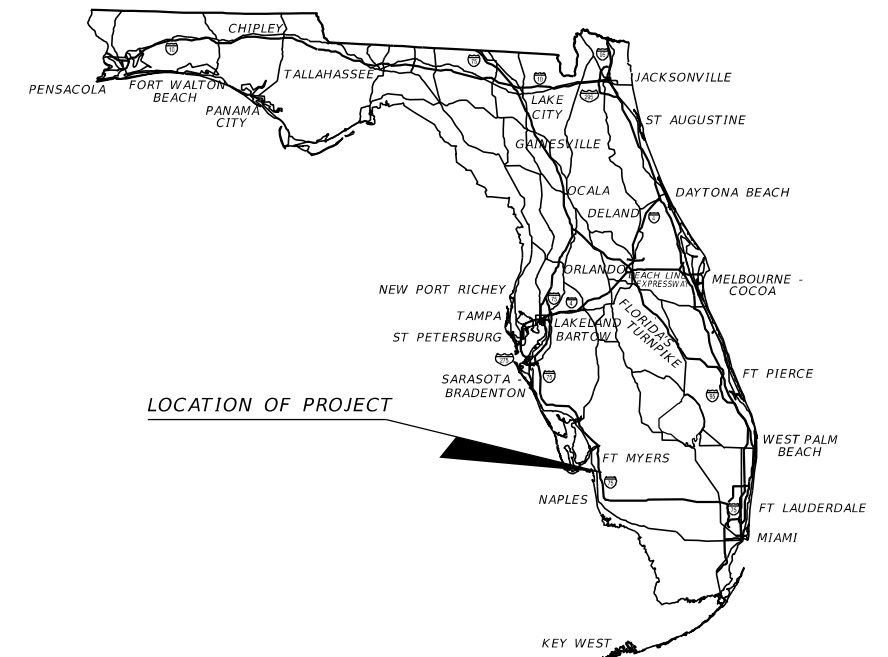
BELLA TERRA BOULEVARD TO ALICO ROAD

LEE COUNTY

LIGHTING PLANS

INDEX OF LIGHTING PLANS

| SHEET NO. | SHEET DESCRIPTION |
|-------------|----------------------------|
| L-1 | KEY SHEET |
| L-2 | SIGNATURE SHEET |
| L-3 - L-4 | TABULATION OF QUANTITIES |
| L-5 | GENERAL NOTES |
| L-6 | PAY ITEM NOTES AND DETAILS |
| L-7 - L-8 | POLE DATA AND LEGEND SHEET |
| L-9 | SERVICE POINT DETAILS |
| L-10 - L-22 | LIGHTING PLAN SHEETS |



GOVERNING STANDARD PLANS:

Florida Department of Transportation, FY2019-20 Standard Plans for Road and Bridge Construction and applicable Interim Revisions (IRs).

Standard Plans for Road Construction and associated IRs are available at the following website: <http://www.fdot.gov/design/standardplans>

Standard Plans for Bridge Construction are included in the Structures Plans Component

GOVERNING STANDARD SPECIFICATIONS:

Florida Department of Transportation, July 2019 Standard Specifications for Road and Bridge Construction at the following website: <http://www.fdot.gov/programmanagement/Implemented/SpecBooks>



**LIGHTING PLANS
ENGINEER OF RECORD:**

LEAH M. HOLMES, P.E.
P.E. NO.: 85359
JOHNSON ENGINEERING, INC.
2122 JOHNSON STREET
FORT MYERS, FLORIDA 33901
CERTIFICATE OF AUTHORIZATION NO.: 642

LEE COUNTY PROJECT MANAGER:
THOMAS MARQUARDT, P.E.

**60% SUBMITTAL
OCTOBER 2020**

| CONSTRUCTION CONTRACT NO. | FISCAL YEAR | SHEET NO. |
|---------------------------|-------------|-----------|
| | 20 | L-1 |

THE OFFICIAL RECORD OF THIS SHEET IS THE ELECTRONIC FILE DIGITALLY SIGNED AND SEALED UNDER RULE 61G15-23.004, F.A.C.

THIS ITEM HAS BEEN DIGITALLY
SIGNED AND SEALED BY:

PRINTED COPIES OF THIS DOCUMENT ARE
NOT CONSIDERED SIGNED AND SEALED.
THE SIGNATURE MUST BE VERIFIED
IN THE ELECTRONIC DOCUMENTS

JOHNSON ENGINEERING
2122 JOHNSON STREET
FORT MYERS, FLORIDA 33901
CERTIFICATE OF AUTHORIZATION: 00642
LEAH M. HOLMES, P.E. NO. 85359

THE ABOVE NAMES PROFESSIONAL ENGINEER SHALL BE RESPONSIBLE FOR THE
FOLLOWING SHEETS IN ACCORDANCE WITH RULE 61G15-23.004, F.A.C.

| <u>SHEET NO.</u> | <u>SHEET DESCRIPTION</u> |
|------------------|----------------------------|
| L-1 | KEY SHEET |
| L-2 | SIGNATURE SHEET |
| L-3 - L-4 | TABULATION OF QUANTITIES |
| L-5 | GENERAL NOTES |
| L-6 | PAY ITEM NOTES |
| L-7 - L-8 | POLE DATA AND LEGEND SHEET |
| L-10 - L-22 | LIGHTING PLAN SHEETS |


THIS ITEM HAS BEEN DIGITALLY
SIGNED AND SEALED BY:

PRINTED COPIES OF THIS DOCUMENT ARE
NOT CONSIDERED SIGNED AND SEALED.
THE SIGNATURE MUST BE VERIFIED
IN THE ELECTRONIC DOCUMENTS

JOHNSON ENGINEERING
2122 JOHNSON STREET
FORT MYERS, FLORIDA 33901
CERTIFICATE OF AUTHORIZATION: 00642
WAYNE W. WRIGHT, P.E. NO. 58220

THE ABOVE NAMES PROFESSIONAL ENGINEER SHALL BE RESPONSIBLE FOR THE
FOLLOWING SHEETS IN ACCORDANCE WITH RULE 61G15-23.004, F.A.C.

| <u>SHEET NO.</u> | <u>SHEET DESCRIPTION</u> |
|------------------|--------------------------|
| L-2 | SIGNATURE SHEET |
| L-9 | SERVICE POINT DETAILS |

| REVISIONS | | | |  LEAH M. HOLMES • P.E. LICENSE NO. 85359 JOHNSON ENGINEERING, INC. 2122 JOHNSON STREET • FORT MYERS, FL 33902 CERTIFICATE OF AUTHORIZATION NO. 642 | LEE COUNTY PUBLIC WORKS DEPARTMENT OF TRANSPORTATION | | | SHEET NO. L-2 |
|-----------|-------------|------|-------------|---|---|--------|----------------|-------------------------|
| DATE | DESCRIPTION | DATE | DESCRIPTION | | ROAD NO. | COUNTY | JEI PROJECT ID | |
| | | | | | C.R. 850 | LEE | 20192030-000 | |

TABULATION OF QUANTITIES

| PAY ITEM NO. | DESCRIPTION | UNIT | SHEET NUMBERS | | | | | | | | | | | | TOTAL THIS SHEET | | GRAND TOTAL | | | |
|--------------|---|------|---------------|-------|------|-------|------|-------|------|-------|------|-------|------|-------|------------------|--|-------------|-------|-------|-------|
| | | | L-10 | | L-11 | | L-12 | | L-13 | | L-14 | | L-15 | | L-16 | | PLAN | FINAL | PLAN | FINAL |
| | | | PLAN | FINAL | PLAN | FINAL | PLAN | FINAL | PLAN | FINAL | PLAN | FINAL | PLAN | FINAL | | | | | | |
| 630 2 11 | CONDUIT, FURNISH & INSTALL, OPEN TRENCH | LF | | | 1033 | | 1235 | | 1400 | | 1420 | | 1274 | | 1400 | | 7762 | | 14313 | |
| 630 2 11A | CONDUIT, FURNISH & INSTALL, INTERCONNECT | LF | 44 | | 700 | | 700 | | 700 | | 720 | | 700 | | 700 | | 4264 | | 7672 | |
| 630 2 12 | CONDUIT, FURNISH & INSTALL, DIRECTIONAL BORE | LF | | | | | 165 | | | | | | 126 | | | | 291 | | 420 | |
| 633-1-124 | FIBER OPTIC CABLE, F&I, UNDERGROUND, 97-144 FIBERS | LF | 144 | | 800 | | 800 | | 800 | | 820 | | 800 | | 800 | | 4964 | | 8872 | |
| 635 2 11A | PULL & SPLICE BOX, F&I, 17" X 30" COVER SIZE | EA | | | | | 4 | | | | | | 2 | | | | 6 | | 7 | |
| 635 2 12 | PULL & SPLICE BOX, F&I, 24" X 36" COVER SIZE | EA | | | 1 | | 1 | | 2 | | 9 | | 2 | | 1 | | 16 | | 32 | |
| 715 1 11 | LIGHTING CONDUCTORS, F&I, INSULATED, NO. 10 OR < (#10 AWG STRANDED TRACER/LOCATE WIRE) INTERCONNECT | LF | 44 | | 700 | | 700 | | 700 | | 720 | | 700 | | 700 | | 4264 | | 7672 | |
| 715 1 12 | LIGHTING CONDUCTORS, F&I, INSULATED, NO. 8-6 (NO. 6) | LF | | | 3114 | | 4304 | | 4240 | | 4293 | | 4272 | | 4240 | | 24462 | | 44704 | |
| 715 4 14 | LIGHT POLE COMPLETE, FURNISH & INSTALL STANDARD POLE STANDARD FOUNDATION, 42' MOUNTING HEIGHT | EA | | | 2 | | 5 | | 5 | | 4 | | 5 | | 5 | | 26 | | 49 | |
| 715 500 1 | POLE CABLE DISTRIBUTION SYSTEM, CONVENTIONAL | EA | | | 2 | | 5 | | 5 | | 4 | | 5 | | 5 | | 26 | | 49 | |

| REVISIONS | | | |
|-----------|-------------|------|-------------|
| DATE | DESCRIPTION | DATE | DESCRIPTION |
| | | | |

JOHNSON ENGINEERING
 LEAH M. HOLMES • P.E. LICENSE NO. 85359
 JOHNSON ENGINEERING, INC.
 2122 JOHNSON STREET • FORT MYERS, FL 33902
 CERTIFICATE OF AUTHORIZATION NO. 642

LEE COUNTY PUBLIC WORKS
 DEPARTMENT OF TRANSPORTATION

| | | |
|----------|--------|----------------|
| ROAD NO. | COUNTY | JEI PROJECT ID |
| C.R. 850 | LEE | 20192030-000 |

TABULATION OF QUANTITIES

SHEET NO.
L-3

THE OFFICIAL RECORD OF THIS SHEET IS THE ELECTRONIC FILE DIGITALLY SIGNED AND SEALED UNDER RULE 61G15-23.004, F.A.C.

TABULATION OF QUANTITIES

| PAY ITEM NO. | DESCRIPTION | UNIT | SHEET NUMBERS | | | | | | | | | | | | | | TOTAL THIS SHEET | | GRAND TOTAL | |
|--------------|---|------|---------------|-------|------|-------|------|-------|------|-------|------|-------|------|-------|------|-------|------------------|-------|-------------|--|
| | | | L-17 | | L-18 | | L-19 | | L-20 | | L-21 | | L-22 | | PLAN | FINAL | PLAN | FINAL | | |
| | | | PLAN | FINAL | PLAN | FINAL | PLAN | FINAL | PLAN | FINAL | PLAN | FINAL | PLAN | FINAL | | | | | | |
| 630 2 11 | CONDUIT, FURNISH & INSTALL, OPEN TRENCH | LF | 1423 | | 1400 | | 1400 | | 1400 | | 928 | | | | | | 6551 | 14313 | | |
| 630 2 11A | CONDUIT, FURNISH & INSTALL, INTERCONNECT | LF | 721 | | 700 | | 700 | | 700 | | 587 | | | | | | 3409 | 7672 | | |
| 630 2 12 | CONDUIT, FURNISH & INSTALL, DIRECTIONAL BORE | LF | | | | | | | | | 130 | | | | | | 130 | 420 | | |
| 633-1-124 | FIBER OPTIC CABLE, F&I, UNDERGROUND, 97-144 FIBERS | LF | 821 | | 800 | | 800 | | 800 | | 687 | | | | | | 3909 | 8872 | | |
| 635 2 11A | PULL & SPLICE BOX, F&I, 17" X 30" COVER SIZE | EA | | | | | | | | | 1 | | | | | | 1 | 7 | | |
| 635 2 12 | PULL & SPLICE BOX, F&I, 24" X 36" COVER SIZE | EA | 9 | | 2 | | 1 | | 2 | | 2 | | | | | | 16 | 32 | | |
| 715 1 11 | LIGHTING CONDUCTORS, F&I, INSULATED, NO. 10 OR < (#10 AWG STRANDED TRACER/LOCATE WIRE) INTERCONNECT | LF | 721 | | 700 | | 700 | | 700 | | 587 | | | | | | 3409 | 7672 | | |
| 715 1 12 | LIGHTING CONDUCTORS, F&I, INSULATED, NO. 8-6 (NO. 6) | LF | 4300 | | 4240 | | 4241 | | 4232 | | 3229 | | | | | | 20242 | 44704 | | |
| 715 4 14 | LIGHT POLE COMPLETE, FURNISH & INSTALL STANDARD POLE STANDARD FOUNDATION, 42' MOUNTING HEIGHT | EA | 4 | | 5 | | 5 | | 4 | | 5 | | | | | | 23 | 49 | | |
| 715 500 1 | POLE CABLE DISTRIBUTION SYSTEM, CONVENTIONAL | EA | 4 | | 5 | | 5 | | 4 | | 5 | | | | | | 23 | 49 | | |

| REVISIONS | | | |
|-----------|-------------|------|-------------|
| DATE | DESCRIPTION | DATE | DESCRIPTION |
| | | | |

JOHNSON ENGINEERING
 LEAH M. HOLMES • P.E. LICENSE NO. 85359
 JOHNSON ENGINEERING, INC.
 2122 JOHNSON STREET • FORT MYERS, FL 33902
 CERTIFICATE OF AUTHORIZATION NO. 642

LEE COUNTY PUBLIC WORKS
 DEPARTMENT OF TRANSPORTATION

| | | |
|----------|--------|----------------|
| ROAD NO. | COUNTY | JEI PROJECT ID |
| C.R. 850 | LEE | 20192030-000 |

TABULATION OF QUANTITIES

SHEET NO.
L-4

THE OFFICIAL RECORD OF THIS SHEET IS THE ELECTRONIC FILE DIGITALLY SIGNED AND SEALED UNDER RULE 61G15-23.004, F.A.C.

LIGHTING GENERAL NOTES:

1. PRIOR TO ANY EQUIPMENT ORDER, THE CONTRACTOR SHALL SUBMIT FOR APPROVAL EQUIPMENT SPECIFICATION OR DESIGN DATA FOR ALL MATERIAL PROPOSED FOR THE PROJECT. THESE MUST SPECIFICALLY INCLUDE:
 - A. LUMINAIRE PHOTOMETRICS.
 - B. POLE STRENGTH CALCULATIONS AND POLE SHOP DRAWINGS FOR PAY ITEM NO. 715-4-14
 - C. POLE FRANGIBILITY TEST
 - D. ANCHOR BOLT DESIGN CALCULATIONS AND SHOP DRAWINGS
 - E. DISTRIBUTION POINT ELECTRICAL EQUIPMENT
2. THE LOCATIONS OF EXISTING UTILITIES, AS SHOWN ON THESE PLANS, ARE APPROXIMATE AND BASED ON THE INFORMATION FURNISHED TO THE ENGINEER BY THE UTILITY OWNER(S) AND ARE SHOWN AS NOTICE TO THE CONTRACTOR THAT UNDERGROUND UTILITIES EXIST. THE CONTRACTOR SHALL NOTIFY THE UTILITY COMPANY OWNER(S) FOR LOCATION AND STAKING OF UNDERGROUND FACILITIES BEFORE EXCAVATING.
3. STATE OF FLORIDA STATUTE 556 (2008) REQUIRES THAT BEFORE EXCAVATING, NOTICE BE GIVEN TO THE SUNSHINE STATE ONE CALL OF FLORIDA, INC. (SSOCOF) A MINIMUM OF TWO (2) FULL BUSINESS DAYS AT 1-800-432-4770. NOT ALL UTILITY COMPANIES ARE MEMBERS OF SSOCOF.
4. THE LOCATION OF THE POLES, CONDUCTORS, CONDUITS, JUNCTION BOXES AND SERVICE POLES ARE DIAGRAMMATIC ONLY AND MAY BE SHIFTED BY THE ENGINEER TO ACCOMMODATE LOCAL CONDITIONS AND EXISTING UTILITY LOCATIONS.
5. ALUMINUM POLES, LUMINAIRES AND BASES SHALL BE FABRICATED IN ACCORDANCE WITH AASHTO'S "STANDARD SPECIFICATIONS FOR STRUCTURAL SUPPORTS FOR HIGHWAY SIGNS, LUMINAIRES AND TRAFFIC SIGNALS" AND SHALL HAVE BEEN TESTED BY FHWA APPROVED METHODS (LATEST EDITION). CERTIFICATION FOR TESTS SHALL BE SUBMITTED WITH THE SHOP DRAWINGS.
6. SHOP DRAWING SUBMITTAL DATA SHALL INCLUDE COMPUTER PRINTOUT SHOWING HORIZONTAL FOOT CANDLE LEVELS TO BE OBTAINED USING SUBMITTED LUMINAIRES ON THIS PROJECT. AT FINAL INSPECTION THE CONTRACTOR SHALL VERIFY THE HORIZONTAL FOOT CANDLE LEVELS ON THE ROADWAY WITH AN APPROVED CURRENTLY CALIBRATED LIGHT METER AND SUBMIT REPORT FOR APPROVAL.
7. ALL ELECTRICAL WORK SHALL MEET ALL REQUIREMENTS OF THE LATEST EDITIONS OF THE NATIONAL ELECTRICAL CODE (NEC), THE NATIONAL ELECTRICAL SAFETY CODE (NEC) AND THE STATE OF FLORIDA DEPARTMENT OF TRANSPORTATION (FDOT) STANDARDS SPECIFICATIONS FOR ROAD AND BRIDGE CONSTRUCTION. ALL COMPONENTS SHALL BE PROPERLY GROUNDED AND BONDED PER N.E.C. REQUIREMENTS.
8. INSTALL LIGHTING ARRESTORS, PROPERLY GROUNDED, IN POWER (SECONDARY) ENTRANCES ON OUTSIDE OF ENCLOSURE.
9. IN ACCORDANCE WITH N.E.C., IDENTIFY ALL CIRCUITS AND EQUIPMENT WITH "LAMACOID TAGS". INSTALL SIMILAR TAGS OF STAINLESS STEEL IDENTIFYING CIRCUIT FOR EACH LUMINAIRE AT ACCESS HANDHOLE FOR EACH POLE.
10. THE CONTRACTOR SHALL NOTIFY LCEC AT LEAST 48 HOURS PRIOR TO ANY INSTALLATION THAT IS WITHIN 20 FEET OF ENERGIZED ELECTRICAL CONDUCTORS. EXTREME CAUTION SHALL BE EXERCISED AT ALL TIMES IN PERFORMANCE OF WORK AROUND THE PRIMARY HIGH VOLTAGE COMPONENTS.
11. PULLING INSTRUCTIONS: CONNECT PULLING DEVICES TO COPPER WIRE AND NOT TO THE JACKET AND MEET THE MANUFACTURER'S REQUIREMENTS. USE PULLING COMPOUND PER MANUFACTURER'S REQUIREMENTS. ALL BENDS SHALL NOT BE LESS THAN RECOMMENDED BY THE NEC OR NECS FOR THE CABLE USED.
12. CONTRACTOR SHALL FURNISH AND INSTALL AN ALUMINUM IDENTIFICATION TAG ON EACH ROADWAY LIGHTING STANDARD. TAGS SHALL BE 2 INCHES X 8 INCHES IN SIZE WITH WHITE LETTERS ON BLUE BACKGROUND, ATTACHED WITH RIVETS (NO SCREWS). NUMBERS SHALL BE PER THE POLE IDENTIFICATION TAG DETAIL. COST OF TAGS SHALL BE INCLUDED IN THE BID ITEMS FOR LIGHT POLE COMPLETE. BOTTOM OF TAG SHALL BE INSTALLED 5 FEET ABOVE FINISHED GRADE. COORDINATE THE POLE NUMBER WITH LEE COUNTY MAINTENANCE.
13. THE CONTRACTOR SHALL STAKE ALL POLE LOCATIONS AND REQUEST UTILITY COMPANIES TO LOCATE AND STAKE UNDERGROUND UTILITIES PRIOR TO EXCAVATING.
14. ALL CONDUITS UNDER ROADWAY (AND/OR SIDEWALK) SHALL BE INSTALLED PRIOR TO THE INSTALLATION OF ROADWAY BASE AND SURFACE (OR CONCRETE), EXCEPT WHERE OTHERWISE INDICATED IN THE PLANS.
15. DIRECTIONAL BORE OPERATIONS, IF USED, SHALL MEET THE REQUIREMENTS OF THE LEE COUNTY DEPARTMENT OF TRANSPORTATION PLAN SPECIFICATIONS FOR SIGNAL AND STREET LIGHTING.
16. AT LOCATIONS WHERE UNDERGROUND UTILITIES ARE WITHIN TWO FEET OF THE LIGHT POLE FOUNDATIONS OR CONDUIT RUNS, AS DETERMINED BY THE ENGINEER, THE CONTRACTOR WILL HAND DIG THE FIRST FOUR FEET OF THE HOLE FOR THE POLE FOUNDATION AND CONDUIT RUN.
17. ALL CONDUIT TRENCHES SHALL BE BACKFILLED COMPLETELY TO PROVED SAFE CROSSING BY THE END OF EACH WORKING DAY OR WHENEVER THE WORK ZONE BECOMES INACTIVE. THE CONTRACTOR SHALL NOT OPEN ANY AREA THAT CANNOT BE BACKFILLED IN THE SAME WORK PERIOD.

18. ALL EXCESS DIRT AND DEBRIS EXCAVATED FROM POLE FOUNDATIONS SHALL BE REMOVED DAILY TO AREAS APPROVED BY THE ENGINEER AND PAID FOR UNDER PAY ITEM 715-4-14.
19. THE CONTRACTOR SHALL MAINTAIN ACCESS TO ALL SIDE STREETS, PRIVATE AND COMMERCIAL DRIVEWAYS AT ALL TIMES DURING THE CONSTRUCTION OPERATION.
20. THE LIGHTING SYSTEM WILL BE MAINTAINED BY LEE COUNTY UPON FINAL ACCEPTANCE. THE CONTRACTOR SHALL SUBMIT "AS-BUILT" PLANS TO THE ENGINEER PRIOR TO FINAL ACCEPTANCE.
21. CONTRACTOR SHALL SUBMIT TO THE ENGINEER OF RECORD SHOP DRAWINGS DETAILING THE LAYOUT OF THE ELECTRICAL EQUIPMENT INSIDE THE DISTRIBUTION POINT LIGHTING ELECTRICAL ENCLOSURE.
22. ALL CONDUCTORS SHALL HAVE THWN-2 600 VOLT INSULATION. ALL CONDUCTORS TO BE XLP/USE. ALL CONDUCTORS SHALL BE CONTINUOUS IN COLOR FROM THE LOAD CENTER TO EACH STREET LIGHT POLE. PHASE TAPE SHALL NOT BE USED TO IDENTIFY A CONDUCTOR.
23. CONDUIT LOCATIONS AS SHOWN ON THE PLANS ARE DIAGRAMMATIC. CONDUITS MUST BE PLACED WITHIN THE ROADWAY LIMITS, BUT CAN BE ADJUSTED TO FIT AROUND EXISTING AND PROPOSED UTILITIES. WHERE PLANNED LOCATION OF LIGHTING CONDUIT RUNS 36" UNDER PAVEMENT IS FOUND TO CONFLICT WITH UNDERGROUND UTILITIES, THE LIGHTING CONDUIT POSITION SHALL BE ALTERED VERTICALLY OR HORIZONTALLY TO AVOID THE CONFLICT AS RECOMMENDED BY THE CONTRACTOR AND APPROVED BY THE ENGINEER. A 24" ABSOLUTE MINIMUM DEPTH SHALL BE MAINTAINED WHERE LIGHTING CONDUITS ARE RELOCATED CLOSER THAN 36" BELOW THE GROUND SURFACE AND SHALL BE PLACED IN AN ADDITIONAL 3" PVC SLEEVE OR BACKFILLED WITH A MINIMUM OF 4" x 4" OF CONCRETE. COST OF SUCH TREATMENT WILL BE INCIDENTAL TO PAY ITEMS PROVIDED.
24. CONTRACTOR SHALL PREPARE ACCURATELY DIMENSIONED "AS-BUILT" PLANS OF FINAL POLE, CONTROLLER, AND CONDUIT LOCATIONS. "AS-BUILT" PLANS SHALL BE REVIEWED AND APPROVED BY THE ENGINEER PRIOR TO FINAL ACCEPTANCE. AFTER THE "AS-BUILT" PLANS ARE APPROVED, THE CONTRACTOR SHALL SUBMIT TWO COPIES TO THE RESIDENT ENGINEER AND ONE COPY TO THE LEE COUNTY MAINTENANCE. COST OF SUCH PREPARATION SHALL BE INCIDENTAL TO THE PAY ITEMS PROVIDED.
25. SPLICES AND CONNECTIONS MADE IN PULL BOXES SHALL BE LIMITED TO THE SERVICE POINT AND CONDUIT JUNCTION WITH MULTI-DIRECTIONAL CONDUITS AS INDICATED ON THE PLANS. THE SPLICES AND CONNECTION MADE AT THESE POINTS SHOULD BE PROPERLY TAPED, PROVIDED WITH HEAT SHRINK TUBES OR CAPS TO WATERPROOF THESE CONNECTIONS. SPLICES SHALL BE ENCAPSULATED. USE ILSCO USPA INLINE SPLICE-WATERPROOF.
26. ALL CONDUITS SHALL BE MANDREL TESTED AND CLEANED. CONDUIT PLACED FOR FUTURE USE SHALL HAVE 1/4" POLYESTER CORD PULLED IN PLACE AND CAPPED, WITH NOTATION INSIDE CONDUIT AS TO LOCATION OF OPPOSITE END. PLACE PULL BOXES TO MARK ENDS OF EMPTY CONDUITS.
27. THE CONTRACTOR SHALL CONTACT THE POWER COMPANY TO DETERMINE IF A SERVICE PROCESSING FEE IS REQUIRED. THE FEE SHALL BE INCLUDED AS PART OF PAYMENT FOR THE LOAD CENTER.
28. CONTRACTOR SHALL USE THE CONCRETE FOUNDATION PER FDOT STANDARD PLAN INDEX 715-002 (SCREW TYPE FOUNDATION IS NOT ALLOWED).
29. ALL POLE FOUNDATIONS SHOULD BE 2" ABOVE GRADE AT ALL LOCATIONS. IF ADJUSTMENTS ARE NECESSARY PLEASE NOTIFY ENGINEER.

| REVISIONS | | | |  LEAH M. HOLMES • P.E. LICENSE NO. 85359 JOHNSON ENGINEERING, INC. 2122 JOHNSON STREET • FORT MYERS, FL 33902 CERTIFICATE OF AUTHORIZATION NO. 642 | LEE COUNTY PUBLIC WORKS DEPARTMENT OF TRANSPORTATION | | | SHEET NO. GENERAL NOTES L-5 |
|-----------|-------------|------|-------------|---|---|--------|----------------|---|
| DATE | DESCRIPTION | DATE | DESCRIPTION | | ROAD NO. | COUNTY | JEI PROJECT ID | |
| | | | | | C.R. 850 | LEE | 20192030-000 | |

PAY ITEM FOOTNOTES:

PAY ITEM NO. 630-2-11 AND 630-2-12:

THE CONTRACT UNIT PRICE PER FOOT OF CONDUIT, FURNISHED AND INSTALLED WILL INCLUDE FURNISHING ALL HARDWARE AND MATERIALS AS SPECIFIED ON THE TABULATION SHEET (L-3 AND L-4). ALL LABOR, TRENCHING, BACK FILLING, AND RESTORATION MATERIALS NECESSARY FOR A COMPLETE AND ACCEPTED INSTALLATION. CONSIDER THE LOCATIONS OF CONDUIT AS SHOWN ON THE PLANS AS APPROXIMATE. CONSTRUCT CONDUIT RUNS AS STRAIGHT AS POSSIBLE AND OBTAIN THE ENGINEER'S APPROVAL OF ALL MAJOR DEVIATIONS IN CONDUIT LOCATIONS FROM THOSE SHOWN ON THE PLANS. UNDERGROUND CONDUITS ARE TO BE ADJUSTED TO AVOID UNDERGROUND UTILITIES AND SIDEWALKS. INCLUDES CONDUIT FOR MULTIPLE RUNS IN ONE TRENCH. LINEAR FOOTAGE SHOWN ON PLANS ARE FOR LENGTH OF TRENCH ONLY.

PAY ITEM NO. 635-2-11A:

INCLUDES 17"x30" POLYMER CONCRETE BOX AND COVER, WITH "STREET LIGHTING" ON COVER. ALL PULL BOXES TO HAVE MOW PAD INSTALLED PER CURRENT LEE COUNTY SPECIFICATIONS.

PAY ITEM NO. 715-1-12:

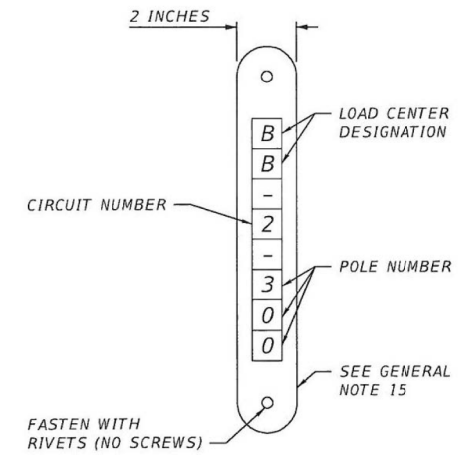
SHALL INCLUDE CONDUCTORS AS INDICATED IN THE PLANS AND THE STANDARD PLANS. PAYMENT SHALL BE MADE ON LINEAR FOOT OF SINGLE CONDUCTOR. CONDUCTOR INSULATION SHALL BE THWN-2. USE NIGHTMASTER PART #D8903-SQH63-V06 AND REFER TO LEE COUNTY SPECIFICATIONS.

PAY ITEM NO. 715-7-11:

INCLUDES NEMA 4X SST INDIVIDUALLY MOUNTED ENCLOSED CIRCUIT BREAKER ON LOAD SIDE OF METER AT THE PEDESTAL POLE, METER BASE, CONTROL POWER TRANSFORMERS, ENCLOSURES, PANEL BOARDS, BREAKERS, FUSES, LIGHTING CONTACTOR, LIGHTING PROTECTOR, PHOTO-ELECTRIC ASSEMBLY, CONDUIT & FEEDER CONDUCTORS FROM POWER COMPANY POINT OF SERVICE TO LIGHTING CONTROL CABINET, PULL BOX AND ALL MISCELLANEOUS HARDWARE FOR A COMPLETE INSTALLATION AS PER PLANS AND FDOT STANDARD PLANS INDEX 639-001 DETAIL "B". THE DISTRIBUTION POINT LIGHTING CONTROL ENCLOSURE SHALL BE NEMA 4X STAINLESS STEEL BASE MOUNTED CABINET AND INSTALLED PER FDOT STANDARD PLANS INDEX 639-002 FIGURE "E" AND INDEX 676-010 'BASE MOUNTED DETAIL'. INCLUDES THE COST OF FURNISHING AND INSTALLING TYPE P-II CONCRETE PEDESTAL POLE, GROUND MOUNTED CABINET, COORDINATION OF WORK WITH FP&L AND ALL SERVICE FEES.

PAY ITEM NO. 715-500-1:

INCLUDES THE SURGE ARRESTOR, TEO-POLE BREAK-AWAY FUSE HOLDERS WITH FUSES, WATERPROOF CONNECTORS AND WATERPROOF WIRING CONNECTION TO THE LUMINAIRE AND STRAIN RELIEF PER FDOT STANDARD PLANS INDEX 715-001, EXCEPT AS NOTED. USE #10 STRANDED WIRE TO FEED STREET LIGHT HEAD FROM BREAKAWAY BASE FOR POLE AND REFER TO LEE COUNTY SPECIFICATIONS.




POLE IDENTIFICATION TAG DETAIL
N.T.S.

| REVISIONS | | | |  LEAH M. HOLMES • P.E. LICENSE NO. 85359 JOHNSON ENGINEERING, INC. 2122 JOHNSON STREET • FORT MYERS, FL 33902 CERTIFICATE OF AUTHORIZATION NO. 642 | LEE COUNTY PUBLIC WORKS DEPARTMENT OF TRANSPORTATION | | | PAY ITEM NOTES AND DETAILS | SHEET NO. |
|-----------|-------------|------|-------------|---|---|--------|----------------|-------------------------------|-----------|
| DATE | DESCRIPTION | DATE | DESCRIPTION | | ROAD NO. | COUNTY | JEI PROJECT ID | | |
| | | | | | C.R. 850 | LEE | 20192030-000 | | L-6 |

POLE DATA

| POLE NO. | CIRCUIT | STATION | DIST. OR ARM | LUMINAIRE WATTAGE | MOUNTING HEIGHT | POLE SETBACK | PAY ITEM |
|----------|---------|-----------|--------------|-------------------|-----------------|--------------|----------|
| 100 | | 796+53.98 | 0 | 255 | 42' | 58.83' | 715-4-14 |
| 101 | | 798+04.00 | 0 | 255 | 42' | 57.72' | 715-4-14 |
| 102 | | 799+54.00 | 0 | 255 | 42' | 54.60' | 715-4-14 |
| 103 | | 801+04.00 | 0 | 255 | 42' | 65.49' | 715-4-14 |
| 104 | | 802+40.00 | 0 | 255 | 42' | 50.57' | 715-4-14 |
| 105 | | 804+04.00 | 0 | 255 | 42' | 64.00' | 715-4-14 |
| 106 | | 805+54.00 | 0 | 255 | 42' | 50.00' | 715-4-14 |
| 107 | | 807+04.00 | 0 | 255 | 42' | 64.00' | 715-4-14 |
| 108 | | 808+54.00 | 0 | 255 | 42' | 50.00' | 715-4-14 |
| 109 | | 810+04.00 | 0 | 255 | 42' | 64.00' | 715-4-14 |
| 110 | | 811+54.00 | 0 | 255 | 42' | 50.00' | 715-4-14 |
| 111 | | 813+04.00 | 0 | 255 | 42' | 64.00' | 715-4-14 |
| 112 | | 814+54.00 | 0 | 255 | 42' | 50.00' | 715-4-14 |
| 113 | | 816+04.00 | 0 | 255 | 42' | 64.00' | 715-4-14 |
| 114 | | 817+54.00 | 0 | 255 | 42' | 50.00' | 715-4-14 |
| 115 | | 818+71.34 | 0 | 255 | 42' | 64.00' | 715-4-14 |
| 116 | | 820+54.00 | 0 | 255 | 42' | 50.00' | 715-4-14 |
| 117 | | 822+04.00 | 0 | 255 | 42' | 63.00' | 715-4-14 |
| 118 | | 823+54.00 | 0 | 255 | 42' | 50.00' | 715-4-14 |
| 119 | | 825+04.00 | 0 | 255 | 42' | 63.00' | 715-4-14 |
| 120 | | 826+39.00 | 0 | 255 | 42' | 50.00' | 715-4-14 |
| 121 | | 828+04.00 | 0 | 255 | 42' | 64.00' | 715-4-14 |
| 122 | | 829+54.00 | 0 | 255 | 42' | 50.00' | 715-4-14 |
| 123 | | 831+04.00 | 0 | 255 | 42' | 64.00' | 715-4-14 |
| 124 | | 832+54.00 | 0 | 255 | 42' | 50.00' | 715-4-14 |
| 125 | | 834+04.00 | 0 | 255 | 42' | 64.00' | 715-4-14 |
| 126 | | 835+54.00 | 0 | 255 | 42' | 50.00' | 715-4-14 |
| 127 | | 837+04.00 | 0 | 255 | 42' | 64.00' | 715-4-14 |
| 128 | | 838+54.00 | 0 | 255 | 42' | 50.00' | 715-4-14 |
| 129 | | 840+04.00 | 0 | 255 | 42' | 64.00' | 715-4-14 |
| 130 | | 841+54.00 | 0 | 255 | 42' | 50.00' | 715-4-14 |
| 131 | | 843+04.00 | 0 | 255 | 42' | 64.00' | 715-4-14 |
| 132 | | 844+54.00 | 0 | 255 | 42' | 50.00' | 715-4-14 |
| 133 | | 846+04.00 | 0 | 255 | 42' | 64.00' | 715-4-14 |
| 134 | | 847+54.00 | 0 | 255 | 42' | 50.00' | 715-4-14 |
| 135 | | 849+04.00 | 0 | 255 | 42' | 64.00' | 715-4-14 |
| 136 | | 850+54.00 | 0 | 255 | 42' | 51.50' | 715-4-14 |
| 137 | | 852+04.00 | 0 | 255 | 42' | 64.00' | 715-4-14 |
| 138 | | 853+54.00 | 0 | 255 | 42' | 51.50' | 715-4-14 |
| 139 | | 855+04.00 | 0 | 255 | 42' | 54.00' | 715-4-14 |
| 140 | | 856+54.00 | 0 | 255 | 42' | 51.50' | 715-4-14 |
| 141 | | 858+04.00 | 0 | 255 | 42' | 54.00' | 715-4-14 |
| 142 | | 859+54.00 | 0 | 255 | 42' | 51.50' | 715-4-14 |
| 143 | | 861+04.00 | 0 | 255 | 42' | 54.00' | 715-4-14 |
| 144 | | 862+54.00 | 0 | 255 | 42' | 51.50' | 715-4-14 |
| 145 | | 864+04.00 | 0 | 255 | 42' | 54.00' | 715-4-14 |
| 146 | | 865+54.00 | 0 | 255 | 42' | 51.50' | 715-4-14 |
| 147 | | 867+04.00 | 0 | 255 | 42' | 54.00' | 715-4-14 |
| 148 | | 868+54.00 | 0 | 255 | 42' | 50.00' | 715-4-14 |
| | | | | | | | |
| | | | | | | | |

| <table border="1"> <thead> <tr> <th colspan="2">REVISIONS</th> </tr> <tr> <th>DATE</th> <th>DESCRIPTION</th> </tr> </thead> <tbody> <tr> <td> </td> <td> </td> </tr> </tbody> </table> | | | | REVISIONS | | DATE | DESCRIPTION | | |  <p>LEAH M. HOLMES • P.E. LICENSE NO. 85359 JOHNSON ENGINEERING, INC. 2122 JOHNSON STREET • FORT MYERS, FL 33902 CERTIFICATE OF AUTHORIZATION NO. 642</p> | <p>LEE COUNTY PUBLIC WORKS DEPARTMENT OF TRANSPORTATION</p> <table border="1"> <tr> <th>ROAD NO.</th> <th>COUNTY</th> <th>JEI PROJECT ID</th> </tr> <tr> <td>C.R. 850</td> <td>LEE</td> <td>20192030-000</td> </tr> </table> | | | ROAD NO. | COUNTY | JEI PROJECT ID | C.R. 850 | LEE | 20192030-000 | <p>POLE DATA</p> | | <p>SHEET NO.</p> <p>L-7</p> |
|--|-------------|----------------|--|--|--|------|-------------|--|--|--|--|--|--|----------|--------|----------------|----------|-----|--------------|-------------------------|--|-----------------------------|
| REVISIONS | | | | | | | | | | | | | | | | | | | | | | |
| DATE | DESCRIPTION | | | | | | | | | | | | | | | | | | | | | |
| | | | | | | | | | | | | | | | | | | | | | | |
| ROAD NO. | COUNTY | JEI PROJECT ID | | | | | | | | | | | | | | | | | | | | |
| C.R. 850 | LEE | 20192030-000 | | | | | | | | | | | | | | | | | | | | |
| <p>10/13/2020 4:45:21 PM Default</p> | | | | <p>U:\Projects\20192030-000_Phase2\lighting\PLDTLT01.dgn</p> | | | | | | | | | | | | | | | | | | |

THE OFFICIAL RECORD OF THIS SHEET IS THE ELECTRONIC FILE DIGITALLY SIGNED AND SEALED UNDER RULE 61G15-23.004, F.A.C.

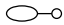
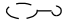
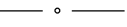
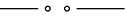
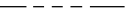


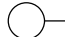
**CONVENTIONAL
LIGHTING DESIGN CRITERIA**


| | |
|----------------------------|--------------|
| Average Initial Intensity | Foot Candles |
| Uniformity Ratio Avg./Min. | 3:1 Or Less |
| Max./Min. | 10:1 Or Less |

LEGEND

SYMBOLS

DESCRIPTION

- 
Single arm Tenon Mount Autobahn Series ATB2 60B LED E15 R2 4K luminaire, 480 voltage. Designed for Type II distribution. Pole mounting height 42 ft.
- 
Existing pole and luminaire.
- 
Schedule 40 PVC conduit with THW or THWN conductors inside (conduit and conductor size as shown on plan sheets). Run one (1) 6 AWG copper bond conductor (TW green insulation) inside conduit with other conductors.
- 
Schedule 40 PVC conduit directional bored with THW or THWN conductors inside (conduit and conductor size as shown on plan sheets). Run one (1) 6 AWG copper bond conductor (TW green insulation) inside conduit with other conductors.
- 
1-1/4" SDR 13.5 poly conduit, 4 runs:
1-BLUE
1-Orange w/ locate wire
1 Green spare
1-Yellow
- 
Pull box. For specifications see Section 635-001 of Standard Specifications For Road And Bridge Construction.
- 
Distribution point. For requirements see Index No. 639-001 of Design Standards.
- 
Under deck lighting, Top Tier LED fixture TT-A2-LED-E1-WQ-CG.


| REVISIONS | | | |  <small>LEAH M. HOLMES • P.E. LICENSE NO. 85359 JOHNSON ENGINEERING, INC. 2122 JOHNSON STREET • FORT MYERS, FL 33902 CERTIFICATE OF AUTHORIZATION NO. 642</small> | LEE COUNTY PUBLIC WORKS DEPARTMENT OF TRANSPORTATION | | | POLE DATA AND LEGEND | SHEET NO. |
|-----------|-------------|------|-------------|---|---|--------|----------------|----------------------|-----------|
| DATE | DESCRIPTION | DATE | DESCRIPTION | | ROAD NO. | COUNTY | JEI PROJECT ID | | L-8 |
| | | | | | C.R. 850 | LEE | 20192030-000 | | |

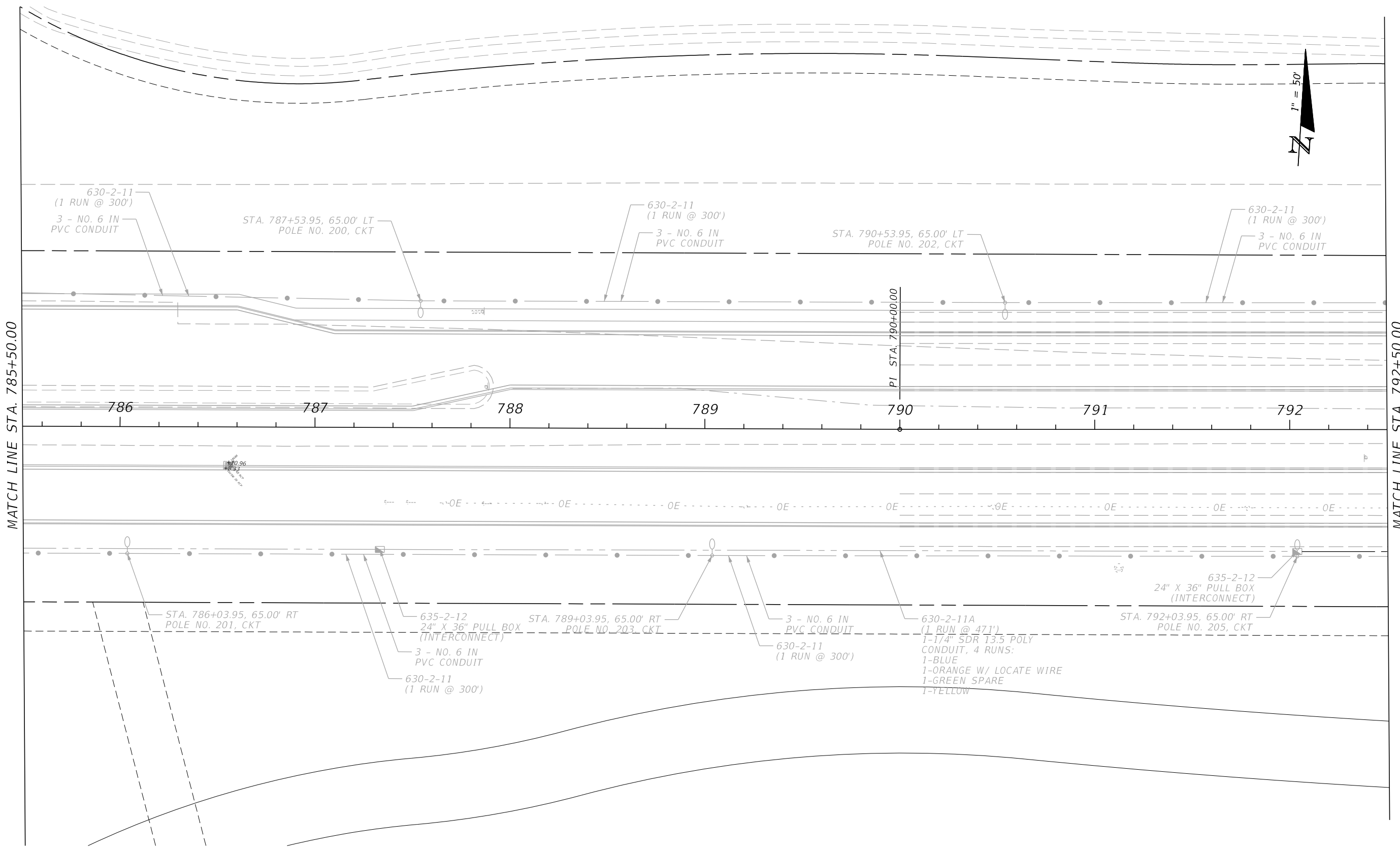
| CIRCUIT DATA | | | | | | | |
|--------------|---------|------------------------|-------|---------------------|-------------------|-------------------|-------------------|
| LOAD CENTER | CIRCUIT | OUTPUT VOLTAGE (VOLTS) | PHASE | BRANCH BREAKER SIZE | MAIN BREAKER SIZE | DEMAND LOAD (KVA) | DESIGN LOAD (KVA) |
| | | | | | | | |
| | | | | | | | |
| | | | | | | | |
| | | | | | | | |
| | | | | | | | |
| | | | | | | | |
| | | | | | | | |
| TOTAL | | | | | | 0.0 | 0.0 |

LOAD CENTER DETAIL NOTES

1. LIGHTING LOAD CENTER SHALL BE INSTALLED ON TYP P-II POLE, 26 FT HEIGHT. SEE STANDARD INDEX 641-000.
2. ELECTRICAL SERVICE CONDUCTORS SHALL BE #2 AWG WITH CONTINUOUS BLACK AND WHITE THHN/THWN INSULATION. MIN. SIZE FROM MAIN BREAKER TO CONTACTOR SHALL BE #6 AWG STRANDED.

THE OFFICIAL RECORD OF THIS SHEET IS THE ELECTRONIC FILE DIGITALLY SIGNED AND SEALED UNDER RULE 61G15-23.004, F.A.C.

| REVISIONS | | | |  <small>WAYNE W. WRIGHT • P.E. LICENSE NO. 58220 JOHNSON ENGINEERING, INC. 2122 JOHNSON STREET • FORT MYERS, FL 33902 CERTIFICATE OF AUTHORIZATION NO. 642</small> | <small>LEE COUNTY PUBLIC WORKS DEPARTMENT OF TRANSPORTATION</small> | | | <h2>SERVICE POINT DETAILS</h2> | SHEET NO. |
|-----------|-------------|------|-------------|--|---|--------|----------------|--------------------------------|-----------|
| DATE | DESCRIPTION | DATE | DESCRIPTION | | ROAD NO. | COUNTY | JEI PROJECT ID | | L-9 |
| | | | | | C.R. 850 | LEE | 20192030-000 | | |



| REVISIONS | | | |
|-----------|-------------|------|-------------|
| DATE | DESCRIPTION | DATE | DESCRIPTION |
| | | | |

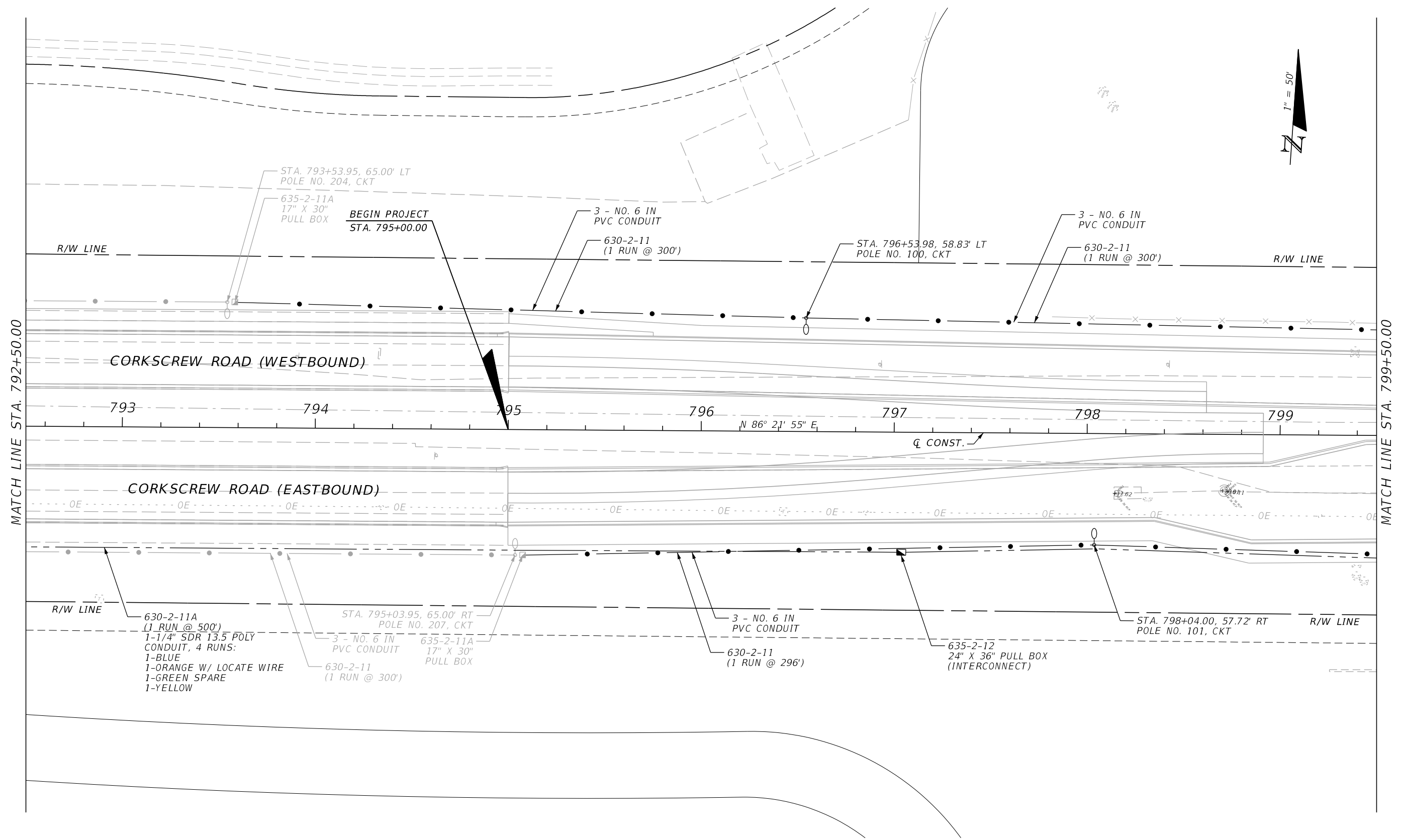
JOHNSON ENGINEERING
 LEAH M. HOLMES • P.E. LICENSE NO. 85359
 JOHNSON ENGINEERING, INC.
 2122 JOHNSON STREET • FORT MYERS, FL 33902
 CERTIFICATE OF AUTHORIZATION NO. 642

| | | |
|---|--------|----------------|
| LEE COUNTY PUBLIC WORKS DEPARTMENT OF TRANSPORTATION | | |
| ROAD NO. | COUNTY | JEI PROJECT ID |
| C.R. 850 | LEE | 20192030-000 |

LIGHTING PLAN
CORKSCREW ROAD
STA. 785+50.00 TO STA. 792+50.00

SHEET NO.
L-10

THE OFFICIAL RECORD OF THIS SHEET IS THE ELECTRONIC FILE DIGITALLY SIGNED AND SEALED UNDER RULE 61G15-23.004, F.A.C.



MATCH LINE STA. 792+50.00

MATCH LINE STA. 799+50.00

| REVISIONS | | | |
|-----------|-------------|------|-------------|
| DATE | DESCRIPTION | DATE | DESCRIPTION |
| | | | |

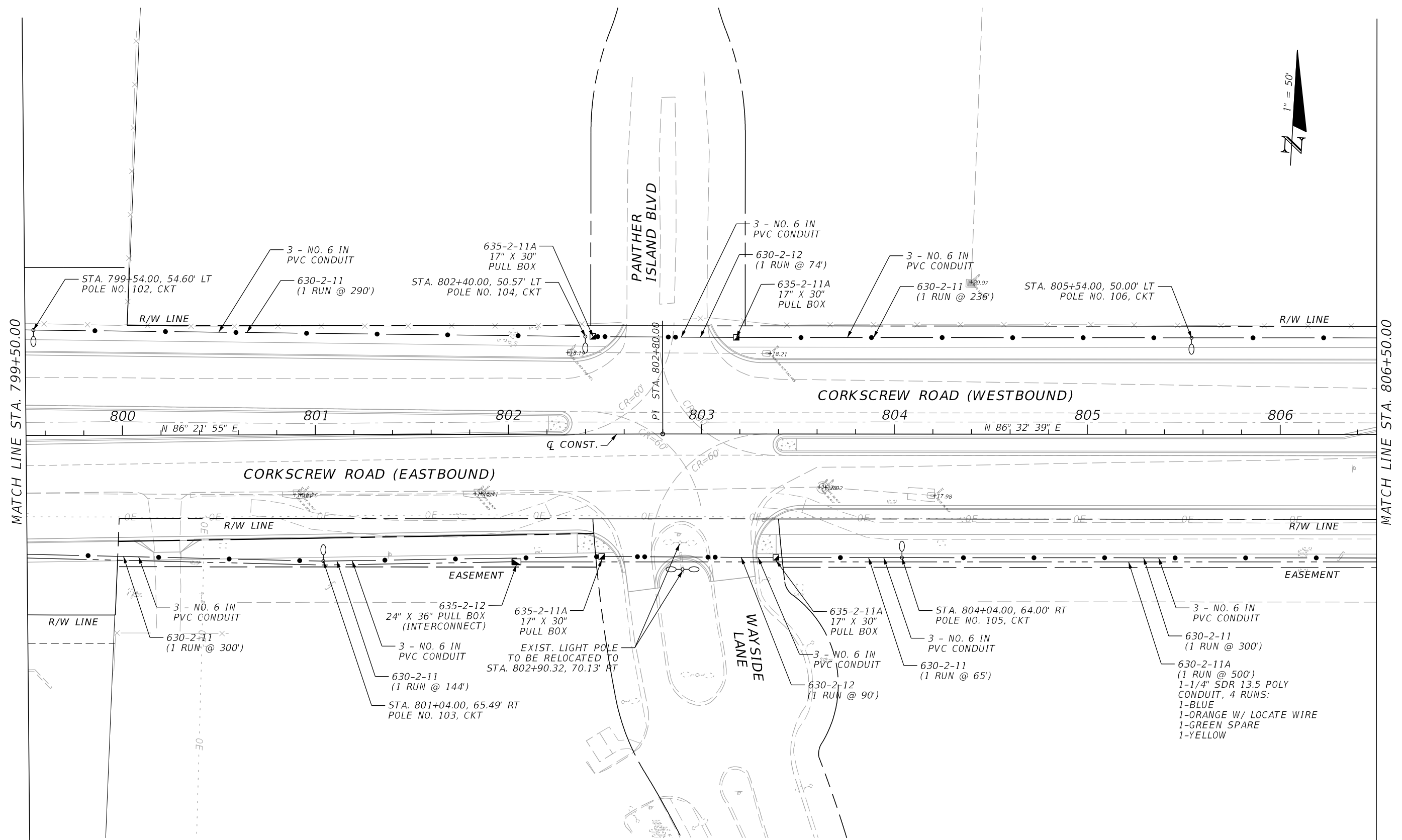
JOHNSON ENGINEERING
 LEAH M. HOLMES • P.E. LICENSE NO. 85359
 JOHNSON ENGINEERING, INC.
 2122 JOHNSON STREET • FORT MYERS, FL 33902
 CERTIFICATE OF AUTHORIZATION NO. 642

| | | |
|---|--------|----------------|
| LEE COUNTY PUBLIC WORKS DEPARTMENT OF TRANSPORTATION | | |
| ROAD NO. | COUNTY | JEI PROJECT ID |
| C.R. 850 | LEE | 20192030-000 |

LIGHTING PLAN
CORKSCREW ROAD
STA. 792+50.00 TO STA. 799+50.00

SHEET NO.
L-11

THE OFFICIAL RECORD OF THIS SHEET IS THE ELECTRONIC FILE DIGITALLY SIGNED AND SEALED UNDER RULE 61G15-23.004, F.A.C.



MATCH LINE STA. 799+50.00

MATCH LINE STA. 806+50.00

| REVISIONS | | | |
|-----------|-------------|------|-------------|
| DATE | DESCRIPTION | DATE | DESCRIPTION |
| | | | |

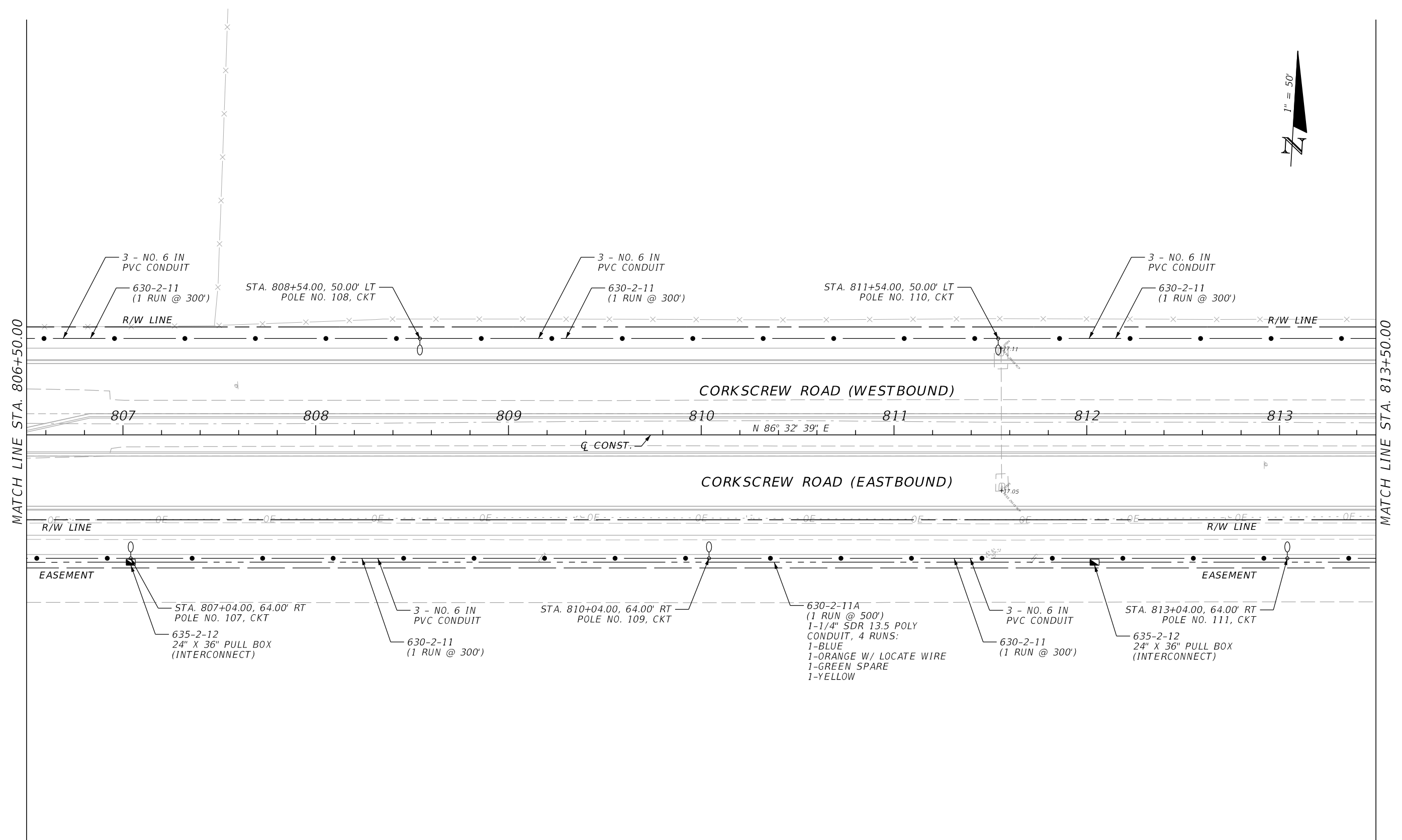
JOHNSON ENGINEERING
 LEAH M. HOLMES • P.E. LICENSE NO. 85359
 JOHNSON ENGINEERING, INC.
 2122 JOHNSON STREET • FORT MYERS, FL 33902
 CERTIFICATE OF AUTHORIZATION NO. 642

| LEE COUNTY PUBLIC WORKS DEPARTMENT OF TRANSPORTATION | | |
|---|--------|----------------|
| ROAD NO. | COUNTY | JEI PROJECT ID |
| C.R. 850 | LEE | 20192030-000 |

LIGHTING PLAN
CORKSCREW ROAD
STA. 799+50.00 TO STA. 806+50.00

| |
|-----------|
| SHEET NO. |
| L-12 |

THE OFFICIAL RECORD OF THIS SHEET IS THE ELECTRONIC FILE DIGITALLY SIGNED AND SEALED UNDER RULE 61G15-23.004, F.A.C.



MATCH LINE STA. 806+50.00

MATCH LINE STA. 813+50.00

| REVISIONS | | | |
|-----------|-------------|------|-------------|
| DATE | DESCRIPTION | DATE | DESCRIPTION |
| | | | |

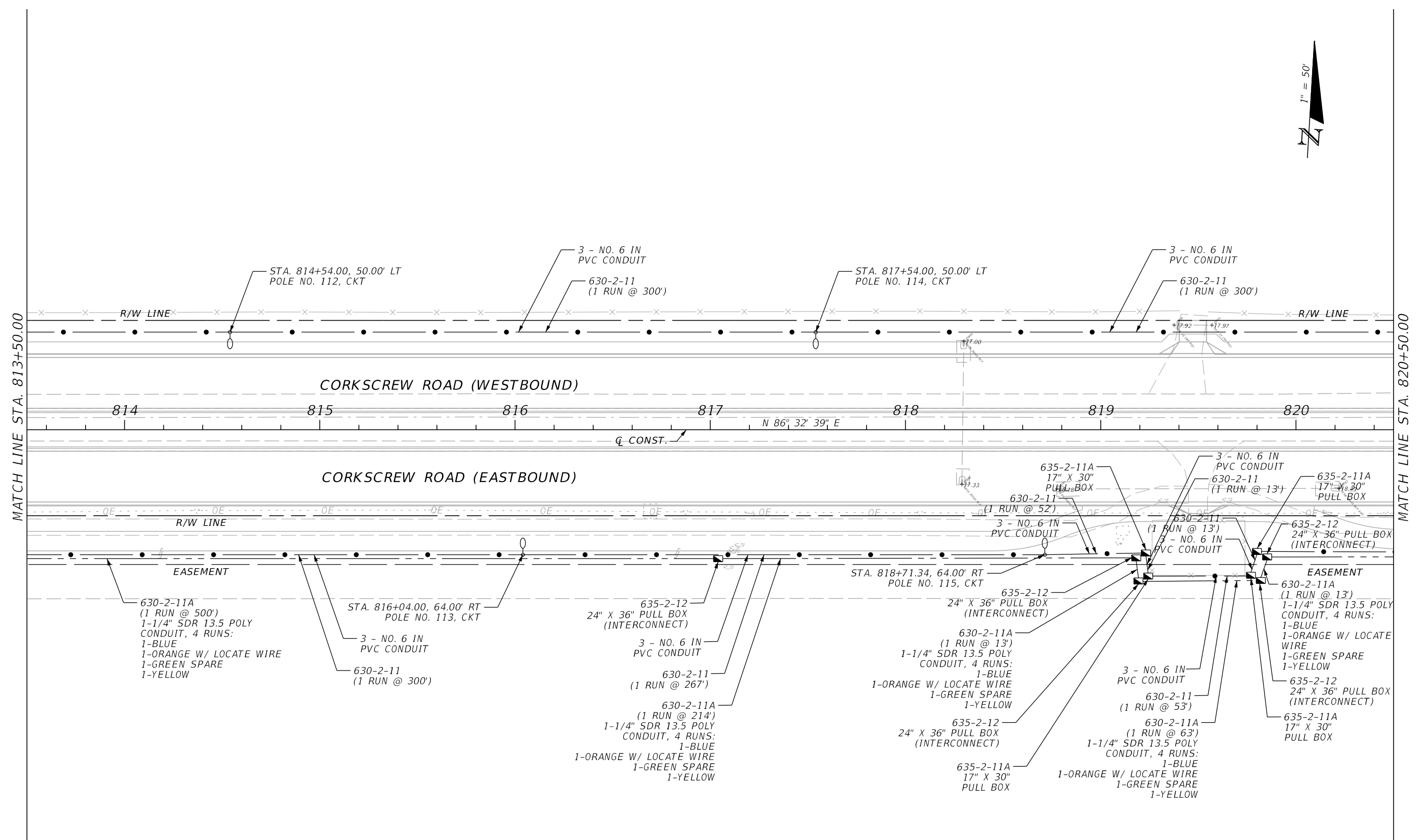
JOHNSON ENGINEERING
 LEAH M. HOLMES • P.E. LICENSE NO. 85359
 JOHNSON ENGINEERING, INC.
 2122 JOHNSON STREET • FORT MYERS, FL 33902
 CERTIFICATE OF AUTHORIZATION NO. 642

| | | |
|---|--------|----------------|
| LEE COUNTY PUBLIC WORKS DEPARTMENT OF TRANSPORTATION | | |
| ROAD NO. | COUNTY | JEI PROJECT ID |
| C.R. 850 | LEE | 20192030-000 |

LIGHTING PLAN
CORKSCREW ROAD
STA. 806+50.00 TO STA. 813+50.00

SHEET NO.
L-13

THE OFFICIAL RECORD OF THIS SHEET IS THE ELECTRONIC FILE DIGITALLY SIGNED AND SEALED UNDER RULE 61G15-23.004, F.A.C.



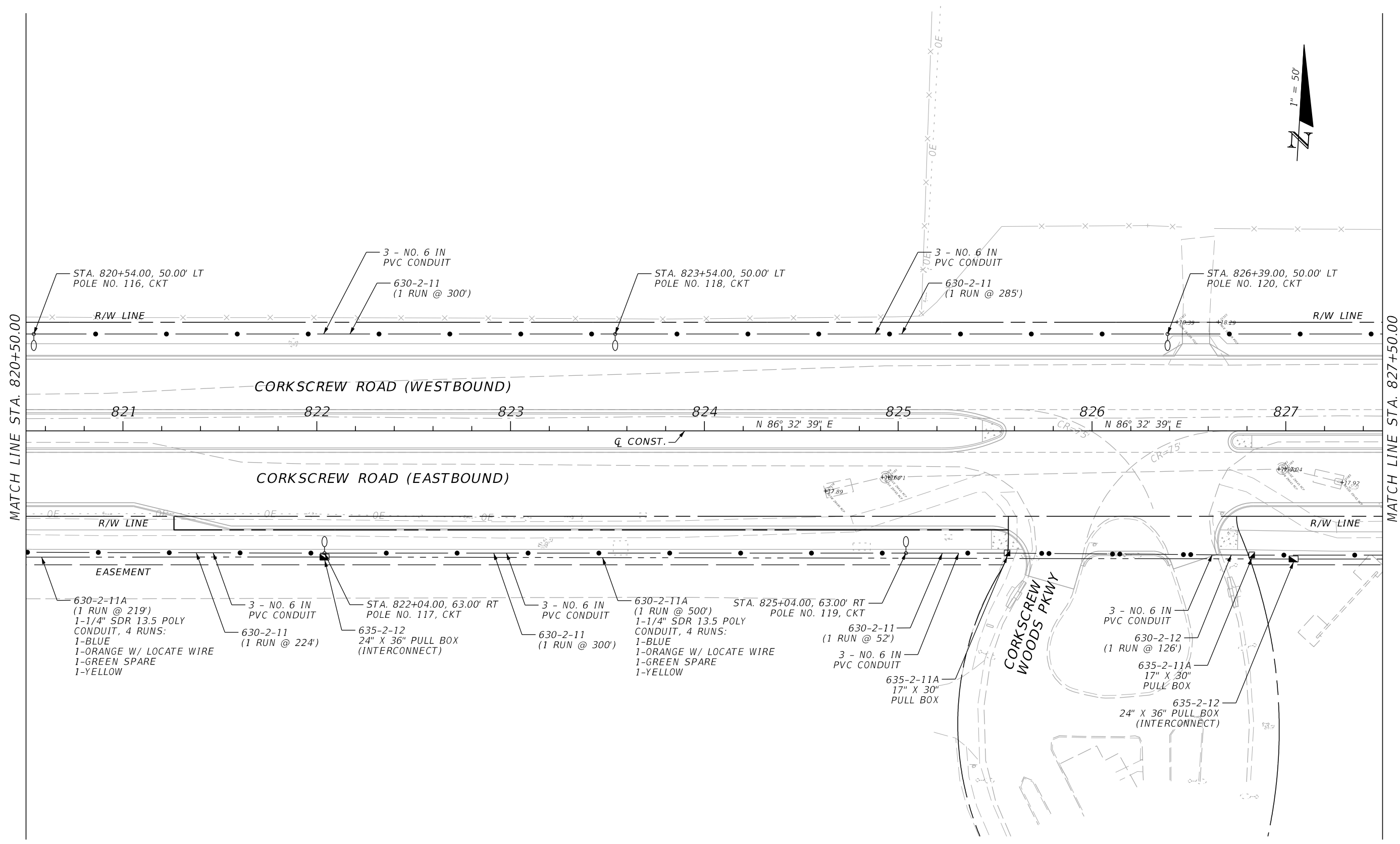
| REVISIONS | | | |
|-----------|-------------|------|-------------|
| DATE | DESCRIPTION | DATE | DESCRIPTION |
| | | | |

JOHNSON ENGINEERING
LEAH M. HOLMES • P.E. LICENSE NO. 85359
 JOHNSON ENGINEERING, INC.
 2122 JOHNSON STREET • FORT MYERS, FL 33902
 CERTIFICATE OF AUTHORIZATION NO. 642

| | | |
|---|--------|----------------|
| LEE COUNTY PUBLIC WORKS DEPARTMENT OF TRANSPORTATION | | |
| ROAD NO. | COUNTY | JEI PROJECT ID |
| C.R. 850 | LEE | 20192030-000 |

LIGHTING PLAN
CORKSCREW ROAD
STA. 813+50.00 TO STA. 820+50.00

| |
|-----------|
| SHEET NO. |
| L-14 |



MATCH LINE STA. 820+50.00

MATCH LINE STA. 827+50.00



| REVISIONS | | | |
|-----------|-------------|------|-------------|
| DATE | DESCRIPTION | DATE | DESCRIPTION |
| | | | |

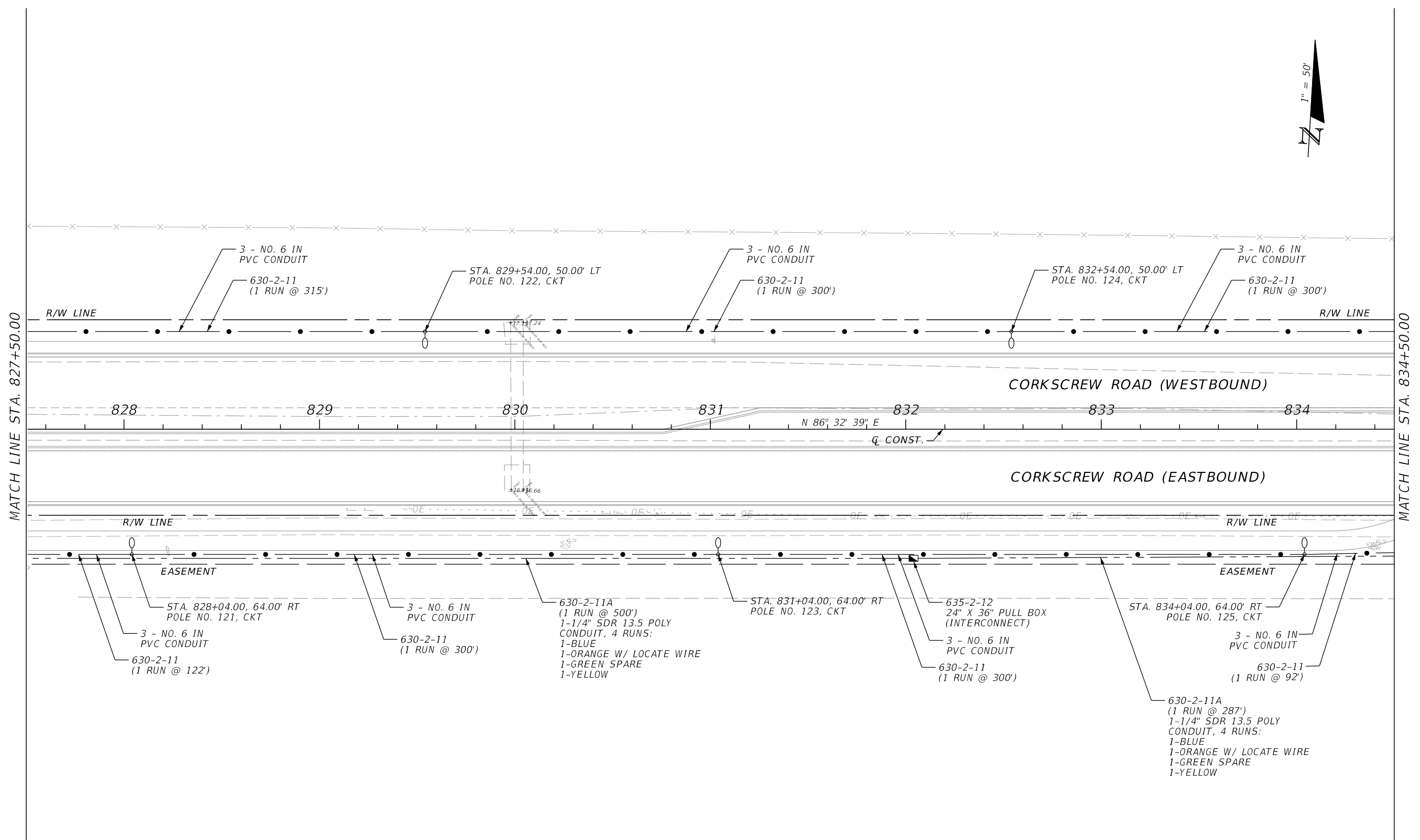
JOHNSON ENGINEERING
 LEAH M. HOLMES • P.E. LICENSE NO. 85359
 JOHNSON ENGINEERING, INC.
 2122 JOHNSON STREET • FORT MYERS, FL 33902
 CERTIFICATE OF AUTHORIZATION NO. 642

| | | |
|---|--------|----------------|
| LEE COUNTY PUBLIC WORKS DEPARTMENT OF TRANSPORTATION | | |
| ROAD NO. | COUNTY | JEI PROJECT ID |
| C.R. 850 | LEE | 20192030-000 |

LIGHTING PLAN
CORKSCREW ROAD
STA. 820+50.00 TO STA. 827+50.00

SHEET NO.
L-15

THE OFFICIAL RECORD OF THIS SHEET IS THE ELECTRONIC FILE DIGITALLY SIGNED AND SEALED UNDER RULE 61G15-23.004, F.A.C.



MATCH LINE STA. 827+50.00

MATCH LINE STA. 834+50.00

| REVISIONS | | | |
|-----------|-------------|------|-------------|
| DATE | DESCRIPTION | DATE | DESCRIPTION |
| | | | |

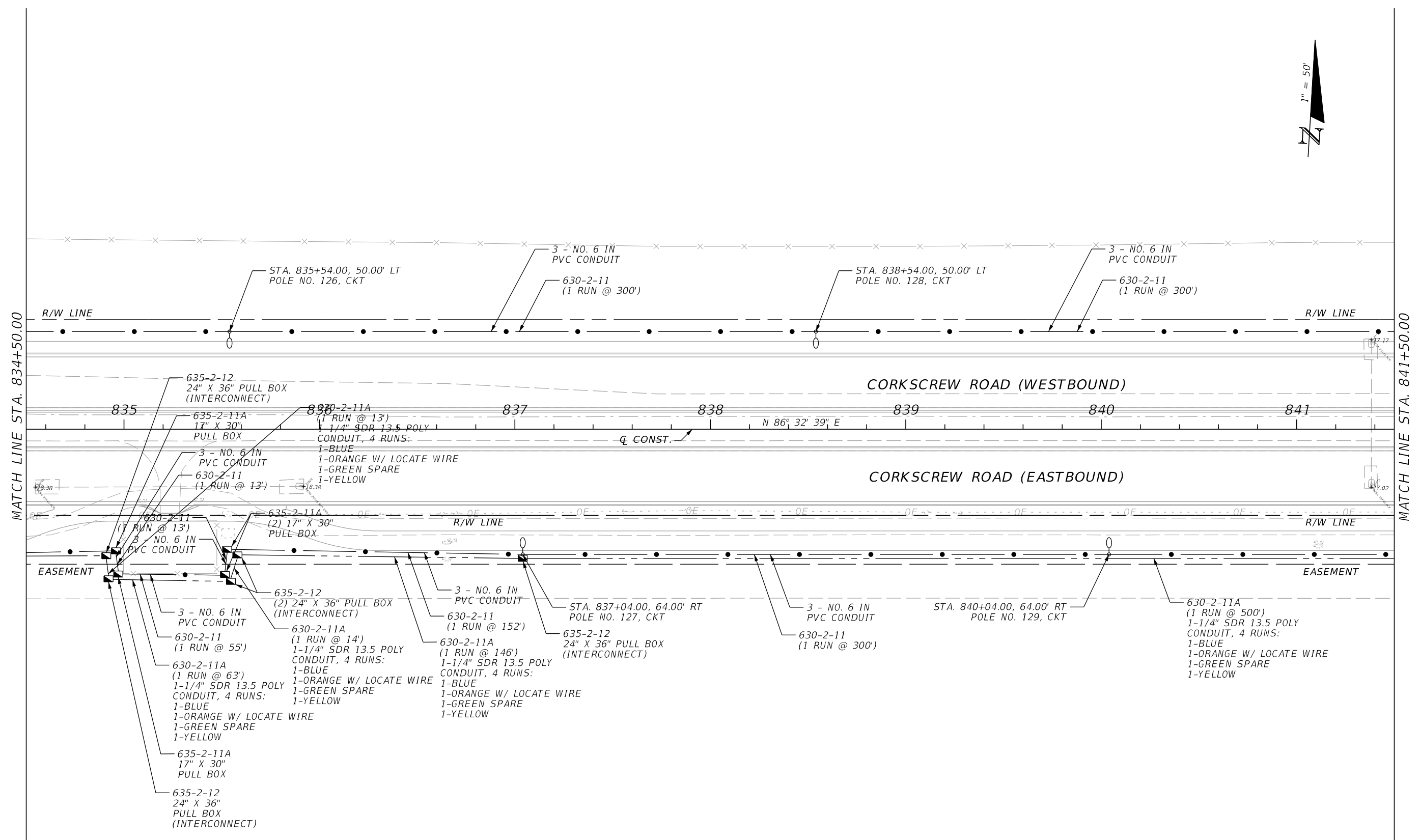
JOHNSON ENGINEERING
 LEAH M. HOLMES • P.E. LICENSE NO. 85359
 JOHNSON ENGINEERING, INC.
 2122 JOHNSON STREET • FORT MYERS, FL 33902
 CERTIFICATE OF AUTHORIZATION NO. 642

| | | |
|---|--------|----------------|
| LEE COUNTY PUBLIC WORKS DEPARTMENT OF TRANSPORTATION | | |
| ROAD NO. | COUNTY | JEI PROJECT ID |
| C.R. 850 | LEE | 20192030-000 |

LIGHTING PLAN
CORKSCREW ROAD
STA. 827+50.00 TO STA. 834+50.00

SHEET NO.
L-16

THE OFFICIAL RECORD OF THIS SHEET IS THE ELECTRONIC FILE DIGITALLY SIGNED AND SEALED UNDER RULE 61G15-23.004, F.A.C.



MATCH LINE STA. 834+50.00

MATCH LINE STA. 841+50.00

| REVISIONS | | | |
|-----------|-------------|------|-------------|
| DATE | DESCRIPTION | DATE | DESCRIPTION |
| | | | |

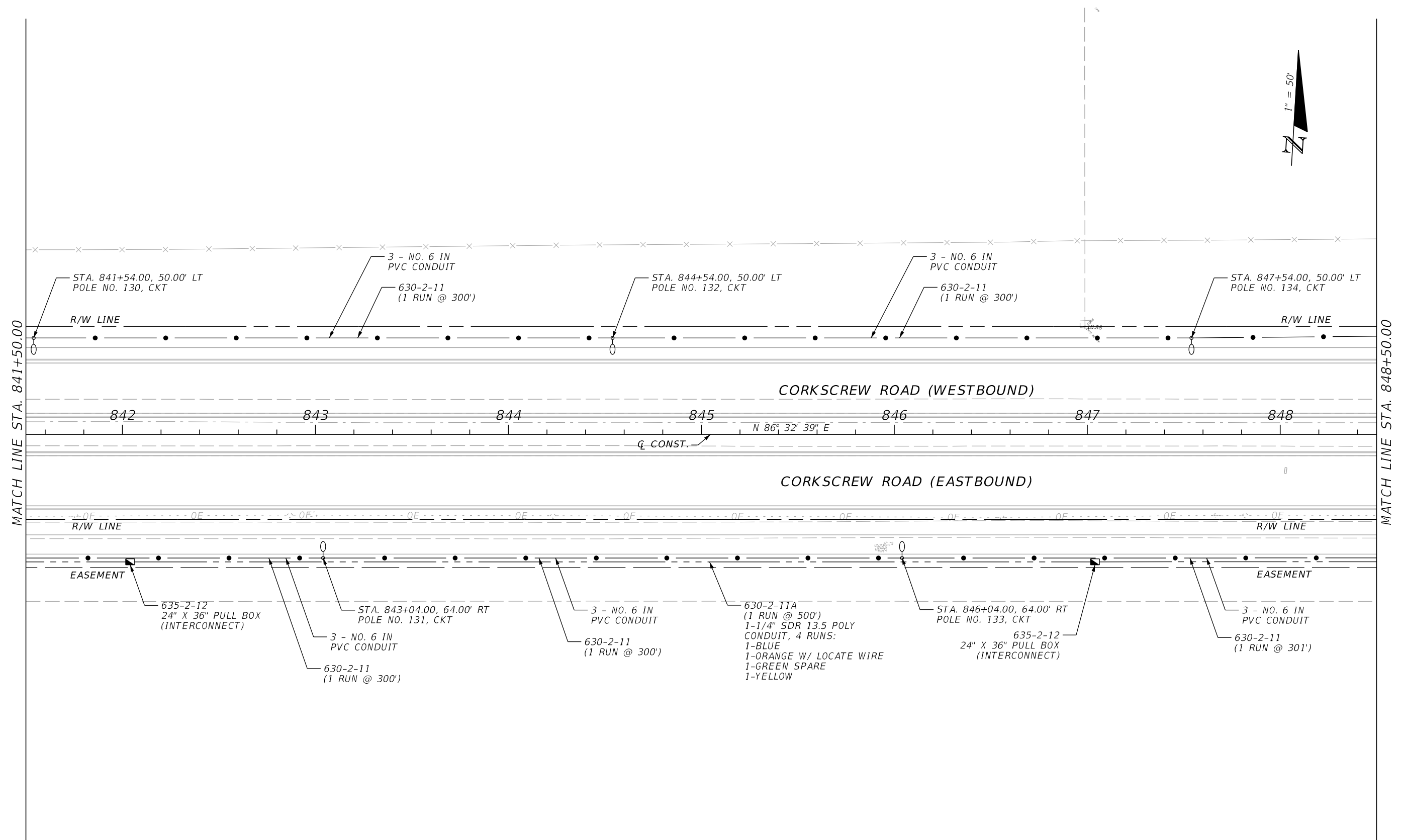
JOHNSON ENGINEERING
 LEAH M. HOLMES • P.E. LICENSE NO. 85359
 JOHNSON ENGINEERING, INC.
 2122 JOHNSON STREET • FORT MYERS, FL 33902
 CERTIFICATE OF AUTHORIZATION NO. 642

| | | |
|---|--------|----------------|
| LEE COUNTY PUBLIC WORKS DEPARTMENT OF TRANSPORTATION | | |
| ROAD NO. | COUNTY | JEI PROJECT ID |
| C.R. 850 | LEE | 20192030-000 |

LIGHTING PLAN
CORKSCREW ROAD
STA. 834+50.00 TO STA. 841+50.00

| |
|-----------|
| SHEET NO. |
| L-17 |

THE OFFICIAL RECORD OF THIS SHEET IS THE ELECTRONIC FILE DIGITALLY SIGNED AND SEALED UNDER RULE 61G15-23.004, F.A.C.



MATCH LINE STA. 841+50.00

MATCH LINE STA. 848+50.00

CORKSCREW ROAD (WESTBOUND)

CORKSCREW ROAD (EASTBOUND)

842 843 844 845 846 847 848

N 86° 32' 39" E

Q CONST.

R/W LINE

R/W LINE

EASEMENT

EASEMENT

635-2-12
24" X 36" PULL BOX
(INTERCONNECT)

STA. 843+04.00, 64.00' RT
POLE NO. 131, CKT

3 - NO. 6 IN
PVC CONDUIT

630-2-11A
(1 RUN @ 500')
1-1/4" SDR 13.5 POLY
CONDUIT, 4 RUNS:
1-BLUE
1-ORANGE W/ LOCATE WIRE
1-GREEN SPARE
1-YELLOW

STA. 846+04.00, 64.00' RT
POLE NO. 133, CKT

635-2-12
24" X 36" PULL BOX
(INTERCONNECT)

3 - NO. 6 IN
PVC CONDUIT

630-2-11
(1 RUN @ 301')

3 - NO. 6 IN
PVC CONDUIT

630-2-11
(1 RUN @ 300')

630-2-11
(1 RUN @ 300')

| REVISIONS | | | |
|-----------|-------------|------|-------------|
| DATE | DESCRIPTION | DATE | DESCRIPTION |
| | | | |

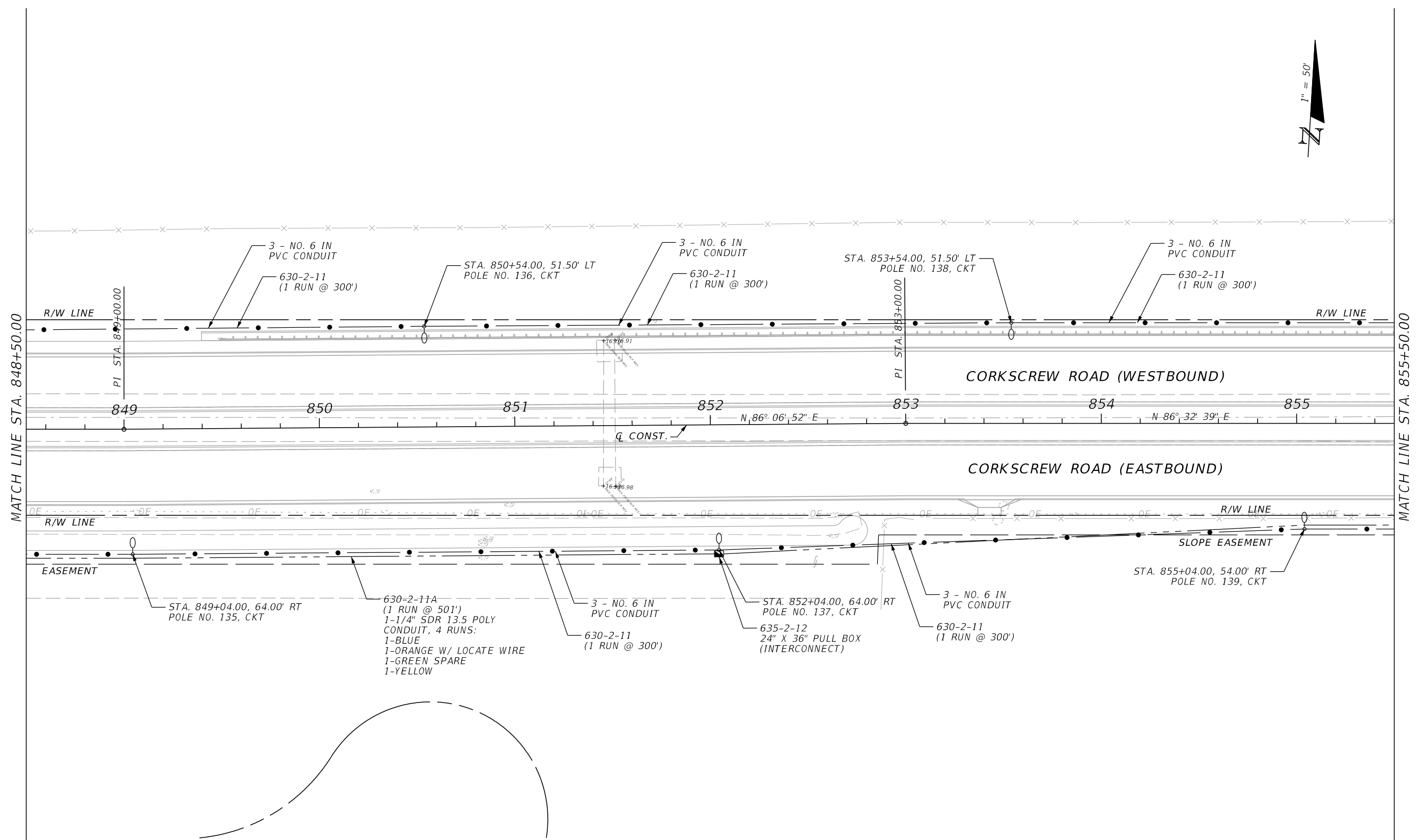
JOHNSON ENGINEERING
 LEAH M. HOLMES • P.E. LICENSE NO. 85359
 JOHNSON ENGINEERING, INC.
 2122 JOHNSON STREET • FORT MYERS, FL 33902
 CERTIFICATE OF AUTHORIZATION NO. 642

| | | |
|---|--------|----------------|
| LEE COUNTY PUBLIC WORKS DEPARTMENT OF TRANSPORTATION | | |
| ROAD NO. | COUNTY | JEI PROJECT ID |
| C.R. 850 | LEE | 20192030-000 |

LIGHTING PLAN
CORKSCREW ROAD
STA. 841+50.00 TO STA. 848+50.00

SHEET NO.
L-18

THE OFFICIAL RECORD OF THIS SHEET IS THE ELECTRONIC FILE DIGITALLY SIGNED AND SEALED UNDER RULE 61G15-23.004, F.A.C.



MATCH LINE STA. 848+50.00

MATCH LINE STA. 855+50.00

| REVISIONS | | | |
|-----------|-------------|------|-------------|
| DATE | DESCRIPTION | DATE | DESCRIPTION |
| | | | |

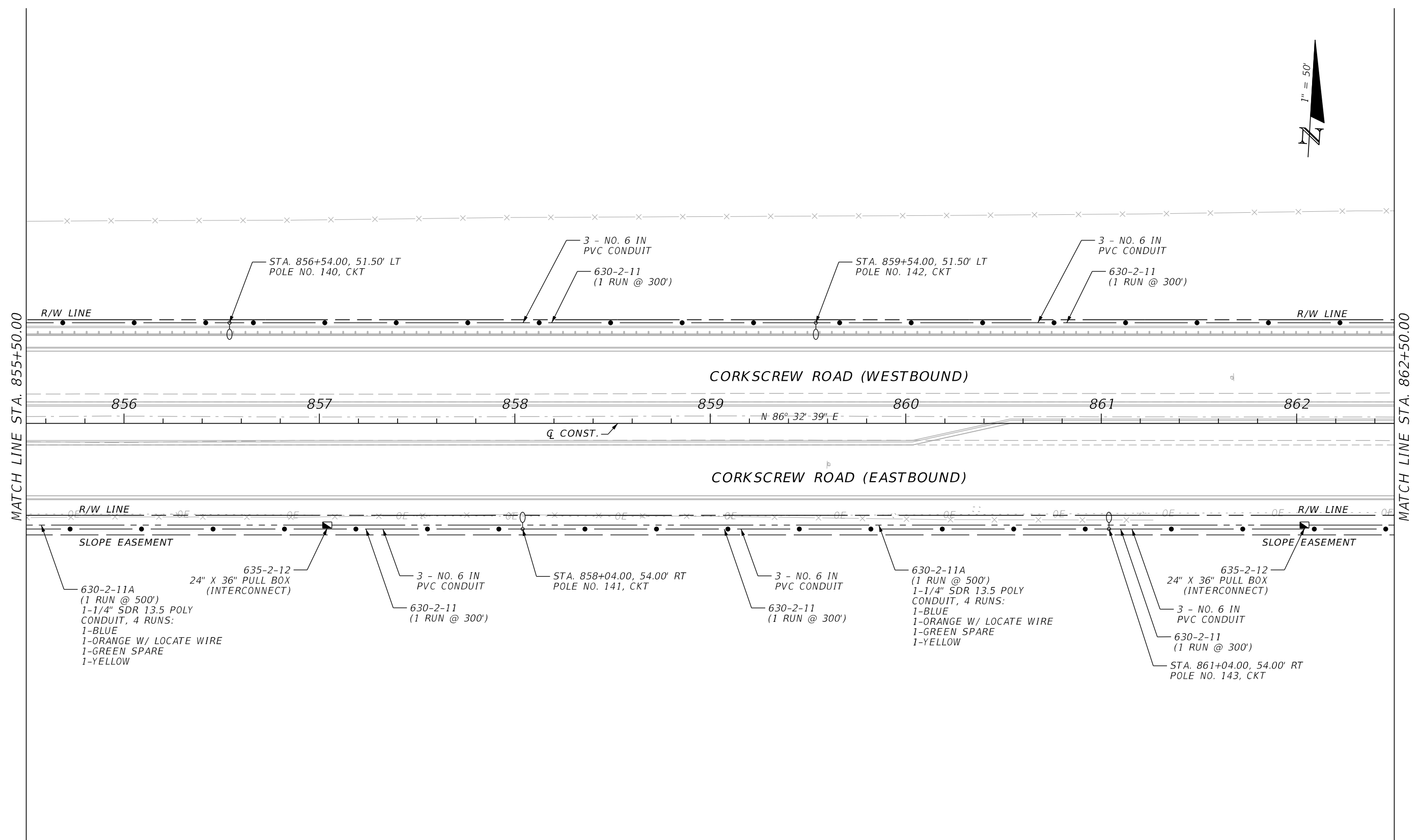
JOHNSON ENGINEERING
 LEAH M. HOLMES • P.E. LICENSE NO. 85359
 JOHNSON ENGINEERING, INC.
 2122 JOHNSON STREET • FORT MYERS, FL 33902
 CERTIFICATE OF AUTHORIZATION NO. 642

| | | |
|---|--------|----------------|
| LEE COUNTY PUBLIC WORKS DEPARTMENT OF TRANSPORTATION | | |
| ROAD NO. | COUNTY | JEI PROJECT ID |
| C.R. 850 | LEE | 20192030-000 |

LIGHTING PLAN
CORKSCREW ROAD
STA. 848+50.00 TO STA. 855+50.00

SHEET NO.
L-19

THE OFFICIAL RECORD OF THIS SHEET IS THE ELECTRONIC FILE DIGITALLY SIGNED AND SEALED UNDER RULE 61G15-23.004, F.A.C.



MATCH LINE STA. 855+50.00

MATCH LINE STA. 862+50.00

| REVISIONS | | | |
|-----------|-------------|------|-------------|
| DATE | DESCRIPTION | DATE | DESCRIPTION |
| | | | |

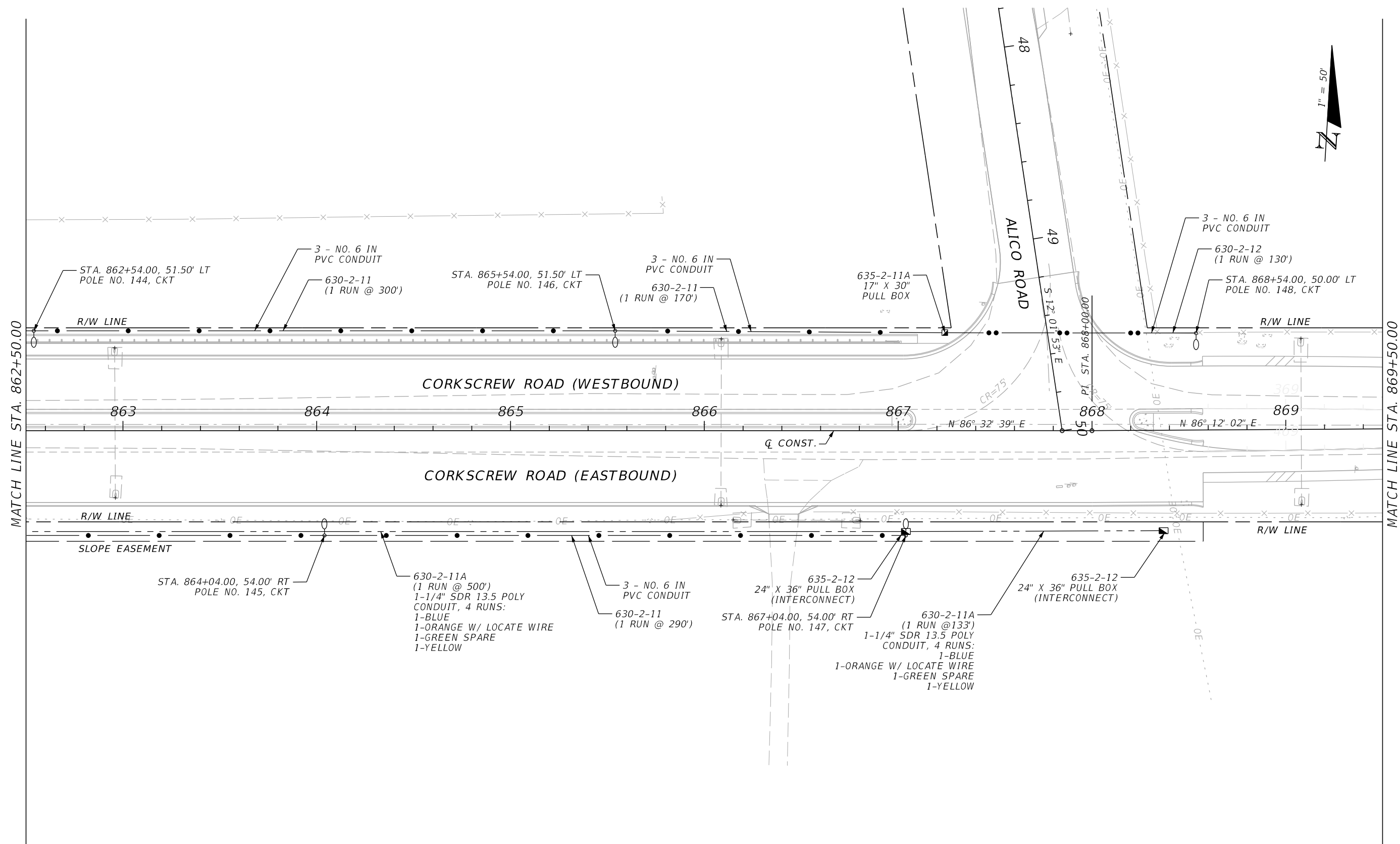
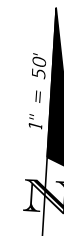
JOHNSON ENGINEERING
 LEAH M. HOLMES • P.E. LICENSE NO. 85359
 JOHNSON ENGINEERING, INC.
 2122 JOHNSON STREET • FORT MYERS, FL 33902
 CERTIFICATE OF AUTHORIZATION NO. 642

| | | |
|---|--------|----------------|
| LEE COUNTY PUBLIC WORKS DEPARTMENT OF TRANSPORTATION | | |
| ROAD NO. | COUNTY | JEI PROJECT ID |
| C.R. 850 | LEE | 20192030-000 |

LIGHTING PLAN
CORKSCREW ROAD
STA. 855+50.00 TO STA. 862+50.00

SHEET NO.
L-20

THE OFFICIAL RECORD OF THIS SHEET IS THE ELECTRONIC FILE DIGITALLY SIGNED AND SEALED UNDER RULE 61G15-23.004, F.A.C.



MATCH LINE STA. 862+50.00

MATCH LINE STA. 869+50.00

| REVISIONS | | | |
|-----------|-------------|------|-------------|
| DATE | DESCRIPTION | DATE | DESCRIPTION |
| | | | |

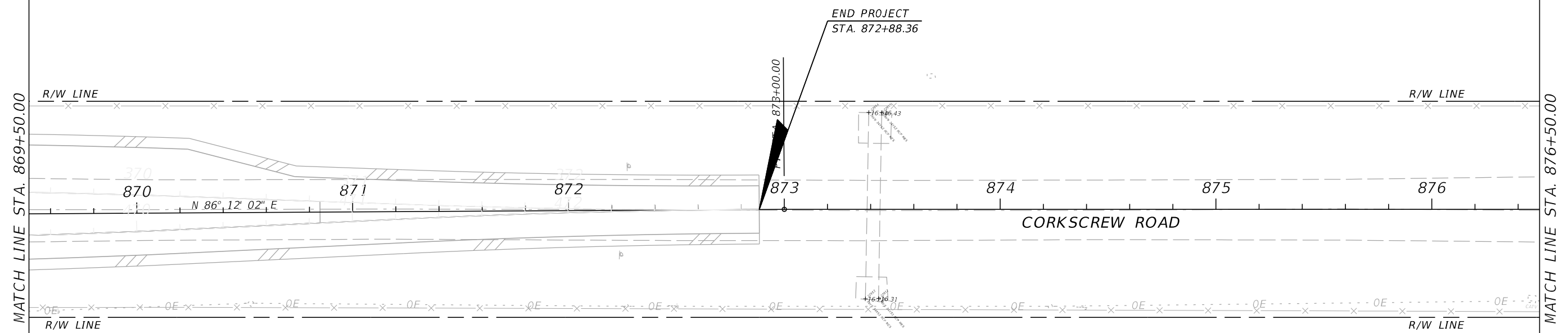
JOHNSON ENGINEERING
 LEAH M. HOLMES • P.E. LICENSE NO. 85359
 JOHNSON ENGINEERING, INC.
 2122 JOHNSON STREET • FORT MYERS, FL 33902
 CERTIFICATE OF AUTHORIZATION NO. 642

| | | |
|---|--------|----------------|
| LEE COUNTY PUBLIC WORKS DEPARTMENT OF TRANSPORTATION | | |
| ROAD NO. | COUNTY | JEI PROJECT ID |
| C.R. 850 | LEE | 20192030-000 |

LIGHTING PLAN
CORKSCREW ROAD
STA. 862+50.00 TO STA. 869+50.00

SHEET NO.
L-21

THE OFFICIAL RECORD OF THIS SHEET IS THE ELECTRONIC FILE DIGITALLY SIGNED AND SEALED UNDER RULE 61G15-23.004, F.A.C.



MATCH LINE STA. 869+50.00

MATCH LINE STA. 876+50.00

| REVISIONS | | | |
|-----------|-------------|------|-------------|
| DATE | DESCRIPTION | DATE | DESCRIPTION |
| | | | |

JOHNSON ENGINEERING
 LEAH M. HOLMES • P.E. LICENSE NO. 85359
 JOHNSON ENGINEERING, INC.
 2122 JOHNSON STREET • FORT MYERS, FL 33902
 CERTIFICATE OF AUTHORIZATION NO. 642

| LEE COUNTY PUBLIC WORKS DEPARTMENT OF TRANSPORTATION | | |
|---|--------|----------------|
| ROAD NO. | COUNTY | JEI PROJECT ID |
| C.R. 850 | LEE | 20192030-000 |

LIGHTING PLAN
CORKSCREW ROAD
STA. 869+50.00 TO STA. 876+50.00

SHEET NO.
L-22

THE OFFICIAL RECORD OF THIS SHEET IS THE ELECTRONIC FILE DIGITALLY SIGNED AND SEALED UNDER RULE 61G15-23.004, F.A.C.