

CARRYOVER #1

Lee County Board Of County Commissioners Agenda Item Summary

Blue Sheet No. 20060390

1. ACTION REQUESTED/PURPOSE: Approve Construction Manager Addendum under RFQ-05-07 COUNTY-WIDE CONTRACT FOR CONSTRUCTION MANAGEMENT, to The Chris-Tel Company of southwest Florida, Inc., for the Terry Park Batter's Cage Building project, for a Guaranteed Maximum Price (GMP) of \$114,987.00 (includes CM Fee of \$10,454.00). Also, approve the alternate in the amount of \$10,450.00. The total project completion time is 90 days. Also request the Board approve waiving of the formal process (if needed) and authorize the use of the Direct Material Purchase Orders as provided for in the CM agreement with Lee County, which allows the County to purchase directly from suppliers of equipment and/or materials as a cost/time saving measure. Also, authorize the Chairwoman to execute Addendum upon receipt. Also approve budget transfer in the amount of \$150,000.00 from Capital Improvement Fund Reserves to the Terry Park Batter's Cage Building project and amend FY 05/06-09/10 CIP accordingly.

2. WHAT ACTION ACCOMPLISHES: Provides Lee County with a Construction Manager to provide concrete, steel, electrical work, painting and site repairs for construction of the Batter's Cage Building at Terry Park. An alternate of galvanized steel in lieu of paint was also provided.

3. MANAGEMENT RECOMMENDATION: Approval recommended.

4. Departmental Category: 02		CO #1	5. Meeting Date: 05-02-2006	
6. Agenda:		7. Requirement/Purpose: (specify)		8. Request Initiated:
<input checked="" type="checkbox"/> Consent		Statute		Commissioner
<input type="checkbox"/> Administrative		Ordinance		Department: Construction & Design
<input type="checkbox"/> Appeals		<input checked="" type="checkbox"/> Admin. Code AC-4-4		Division
<input type="checkbox"/> Public		Other		By: Jim Lavender, Director
<input type="checkbox"/> Walk-On				

9. Background:

On May 3, 2005, the Board of County Commissioners approved the award of RFQ-05-07 COUNTY-WIDE CONTINUING CONTRACT FOR CONSTRUCTION MANAGEMENT with a total of twelve (12) firms. As approved under that blue sheet, each projects' Guaranteed Maximum Price (GMP) will be brought back for Board approval.

It is being recommended that the Board approve the Construction Manager Agreement under RFQ-05-07 for the project known as TERRY PARK BATTER'S CAGE BUILDING for a total Guaranteed Maximum Price of \$114,987.00 (includes CM fee of \$10,454.00), plus the alternate in the amount of \$10,450.00.

Funds will be available in the following account: 20206730100.506540

Attachments: (1) Price Proposal from The Chris-Tel Company of Southwest Florida, Inc.
(2) Budget Transfer for Execution

10. Review for Scheduling:

Department Director	Purchasing or Contracts	Human Resources	Other	County Attorney	Budget Services				County Manager/P.W. Director
					Analyst	Risk	Grants	Mgr.	
<i>J. Shumaker</i> 4-11-06	<i>Shirley</i> 4-11-06	N/A	<i>AP 4/11</i>	<i>WBE</i> 4/12/06	<i>4-12-06</i>	<i>4/12/06</i>	<i>4/12-06</i>	<i>4/13/06</i>	<i>J. Shumaker</i> 4-11-06

11. Commission Action:

Approved *ON 4-25-06*
 Deferred *1 WK to 5-2-06*
 Denied *JIA*
 Other

RECEIVED BY
COUNTY ADMIN: *fm*

4-12-06

3:22

COUNTY ADMIN
FORWARDED TO: *1-*

4-13-06

2:30

Rec. by CoAtty

Date: *4/12/06*

Time: *2:23pm*

Forwarded To: *Batter's Cage Building at*

4/12/06

LEE COUNTY
RECEIVED

06 MAR -6 PM 3:47

COMMUNITY SERVICES CENTER
FOURTH FLOOR

LEE COUNTY

LEE COUNTY
BOARD OF COUNTY COMMISSIONERS

GUARANTEED MAXIMUM PRICE PROPOSAL

For

TERRY PARK

BATTER'S CAGE BUILDING

January 17, 2006

THE CHRIS-TEL COMPANY OF SOUTHWEST FLORIDA, INC.

GUARANTEED MAXIMUM PRICE PROPOSAL

Terry Park – Batter’s Cage Building

January 17, 2006

TABLE OF CONTENTS

SECTION I	SUMMARY OF WORK
SECTION II	LIST OF DRAWINGS AND SPECIFICATIONS
SECTION III	CLARIFICATIONS/ASSUMPTIONS/QUALIFICATIONS
SECTION IV	GMP COST SUMMARY
SECTION V	ALTERNATES
SECTION VI	PROJECT SCHEDULE
SECTION VII	SAFETY PROGRAM

THE CHRIS-TEL COMPANY OF SOUTHWEST FLORIDA, INC.

SECTION I

SUMMARY OF WORK

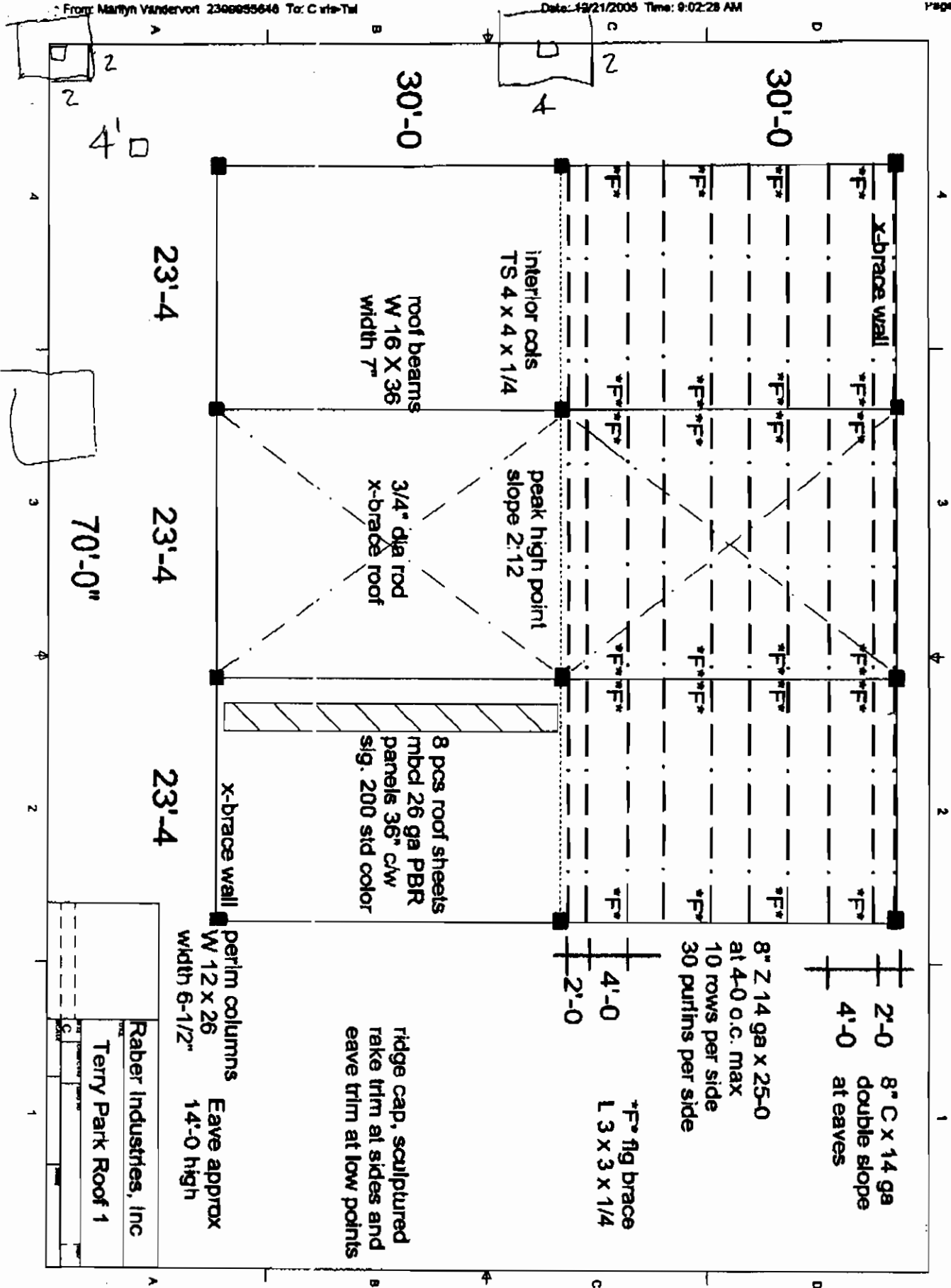
SUMMARY OF WORK:

- 1) Provide 60'-0" x 70'-0" metal roof structure with 14'-0" +/- eave per attached drawing.
- 2) Provide (12) 4'x4'x4' foundations cut into existing slab.
- 3) Provide lighting per attached specification sheet.
- 4) Provide (1) double duplex outlet.
- 5) Provide structure if galvanized alternate is not selected.

DRAWING AND SPECIFICATIONS

The following Construction Documents for "Terry Park"

DRAWING NUMBER	PREPARED BY	TITLE	ISSUE DATE
	Raber Industries		
	Current Electric	Hubbell Cut Sheets	



perim columns
W 12 x 26
width 6-1/2" Eave approx
14'-0" high

ridge cap, sculptured
rake trim at sides and
eave trim at low points

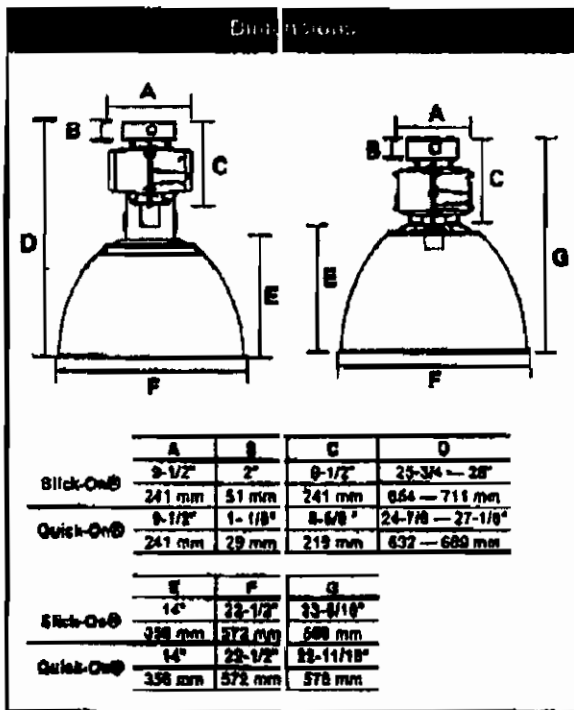
8" Z 14 ga x 25-0
at 4-0 o.c. max
10 rows per side
30 purlins per side

8" C x 14 ga
double slope
at eaves

F* flg brace
L 3 x 3 x 1/4

Raber Industries, Inc
Terry Park Roof 1

JOB **TERRY PARK** Type



Ordering Information

series	voltage	source	voltage	optics	color	options	options
BL	170	H	4	WA22		WA22	

SERIES	SOURCE	OPTICS
BL Superbay I Series	H ¹ Metal Halide	WA22 22" wide acrylic reflector
	E High Pressure Sodium	
	W Pulse Start Metal Halide	
WATTAGE	VOLTAGE	COLOR
150 150 watt HPS	S 480 volt	WH White (standard)
175 175 watt MH	S Tri-Tap® 120/277/347 volt	GR Grey (optional)
250 250 watt MH or HPS	S Quad-Tap® 120/208/240/277 volt	
325 320 watt Pulse Start MH		
350 350 watt Pulse Start MH		
400 400 watt MH, HPS or Pulse Start MH		

Note: Options must be added as suffix to catalog number. See Options. Accessories must be ordered separately. See Accessories.

Comments See back for Photometrics

Photometrics													
Catalog No.	BL-400HX-WA			Lamp	Lamp p			Input Watts	460		Spacing Criteria	1.7	Report No.
Lens				Lumens	36000			Ballast Factor (BF)	1.00		Spacing Criteria L	1.7	HS-04548
LSR	72.00			Ballast				Total Luminaire Efficiency	91.87%		Spacing Criteria	1.7 BTWN 4	
COEFFICIENTS OF UTILIZATION						CANDELA DISTRIBUTION							
ptc	30%				20%				0				
DGC	70	80	90	10	70	80	90	10	80	90	10	0	<p>Beam diameter: 2000 Candela</p>
pcw	70	80	90	10	70	80	90	10	80	90	10	0	
RCR													
0	185	156	135	105	191	161	141	111	82	63	49	38	
1	87	84	80	80	83	80	80	80	83	80	78	65	
2	94	83	78	73	86	78	71	67	74	70	67	67	
3	83	78	68	63	88	78	62	57	67	63	59	51	
4	77	68	61	56	74	68	64	61	61	59	55	45	
5	71	61	54	48	68	62	57	52	55	50	48	40	
6	66	56	48	43	64	58	52	47	51	48	45	38	
7	61	50	43	38	60	54	48	43	48	45	42	35	
8	57	46	38	33	56	50	44	39	44	41	38	31	
9	53	41	34	29	52	46	40	35	40	37	34	28	
10	48	37	30	25	48	42	36	31	36	33	30	24	
ZONAL LUMENS													
Zone	Lumens	% Lamp	% Fixt.										
0-30	8000	22.1	17.4										
0-40	17148	47.6	22.0										
0-60	23616	65.6	21.8										
0-80	27288	75.8	21.7										
0-100	36000	91.7	11.0										



Lighting, Inc.

Hubbell Lighting, Inc., 2000 Esplanade Way, Charlottesville, Virginia 24073, (940) 382-8111 - Fax (940) 382-1828 - <http://www.hubbell-lig.com/>
 Hubbell Canada, Inc., 670 Brock Road South, Pickering, Ontario L1W1Z8, (905) 839-1138 - Fax (905) 839-8108 - <http://www.hubbell-canada.com/>

SUPERBAY I WA SERIES

SUNBOND 4000 44 inch
Prismatic Acrylic Reflector

BL-WAZZ

OPTIONS — Factory installed. Order with fixture by adding suffix.

Suffix	Description
-CXHL	Cord and Hook/Loop with Quick-On® Hanger - 80 cord wired thru hook (specify cord length - see section notes.)
-CXHLP (X ₁)	Cord, Hook/Loop and 20A Plug with Quick-On® Hanger - 80 cord with plug ¹ wired thru hook (specify voltage) ¹ (specify cord length - see notes.)
-CXHLP1-15A	Cord, Hook/Loop and 15A 120 Volt Plug With Quick-On® Hanger - 80 cord with plug ¹ wired thru hook (specify cord length - see notes.)
-CXHLP4-15A	Cord, Hook/Loop and 15A 277 Volt Plug With Quick-On® Hanger - 80 cord with plug ¹ wired thru hook (specify cord length - see notes.)
-CXHLP80 (X ₁)	Cord, Hook/Loop and 20A Plug With Stick-On® Hanger - 80 cord with plug ¹ wired thru hook (specify voltage) ¹ (specify cord length - see notes.)
-CXHLP80-15A	Cord, Hook/Loop and 15A 120 Volt Plug With Stick-On® Hanger - 80 cord with plug ¹ wired thru hook (specify cord length - see notes.)
-CXHLP80-15A	Cord, Hook/Loop and 15A 277 Volt Plug With Stick-On® Hanger - 80 cord with plug ¹ wired thru hook (specify cord length - see notes.)
-CXHLP80F (X ₂)	Cord, Hook/Loop and 20A Plug with Stick-On® Hanger - single fuse (included) 80 cord with plug ¹ wired thru hook (specify voltage) ² (specify cord length - see notes.)
-CXHLP80FF (X ₂)	Cord, Hook/Loop and 20A Plug with Stick-On® Hanger - double fuse (included) 80 cord with plug ¹ wired thru hook (specify voltage) ² (specify cord length - see notes.)
-CXHL80	Cord and Hook/Loop with Stick-On® Hanger - 80 cord wired thru hook (specify cord length - see notes.)
-CXHL80F (X ₂)	Cord and Hook/Loop with Stick-On® Hanger - single fuse (included) 80 cord wired thru hook (specify voltage) ² (specify cord length - see notes.)
-CXHL80FF (X ₂)	Cord and Hook/Loop with Stick-On® Hanger - double fuse (included) 80 cord wired thru hook (specify voltage) ² (specify cord length - see notes.)
-DFP (X ₁)	Dead Front Disconnect - Includes cord, loop and dead front disconnect plug with Quick-On® hanger - 15" 80 cord factory wired to the fixture. Order with PHS-XXXL (see mounting accessories) (specify voltage) ¹
-DFPF (X ₁)	Dead Front Disconnect with Single Fuse - Includes cord, loop and dead front disconnect plug plus single fuse block (fuse included) with Quick-On® hanger. 15" 80 cord factory wired to fixture. Order with PHS-XXXL (see mounting accessories) (specify voltage) ²
-DFPFF (X ₁)	Dead Front Disconnect with Double Fuse - Includes cord, loop and dead front disconnect plug plus a double fuse block (fuses included) with Quick-On® hanger. 15" 80 cord factory wired to fixture. Order with PHS-XXXL (see mounting accessories) (specify voltage) ²
-DFP80 (X ₁)	Dead Front Disconnect - Includes cord, loop and dead front disconnect plug with Stick-On® hanger. 15" 80 cord factory wired to fixture. Order with PHS-XXXL (see mounting accessories) (specify voltage) ¹
-DFP80F (X ₂)	Dead Front Disconnect with Single Fuse - Includes cord, loop and dead front disconnect plug plus a single fuse block (fuse included) with Stick-On® hanger. 15" 80 cord factory wired to fixture. Order with PHS-XXXL (see mounting accessories) (specify voltage) ²
-DFP80FF (X ₂)	Dead Front Disconnect with Double Fuse - Includes cord, loop and dead front disconnect plug plus a double fuse block (fuses included) with Stick-On® hanger. 15" 80 cord factory wired to fixture. Order with PHS-XXXL (see mounting accessories) (specify voltage) ²
-EM	Emergency Circuit Complete with Stick-On® Hanger - D.C. bayonet base 120V quartz socket. For connection by customer to separate power supply.
-FCX ₁ X ₂	Flexible Wire System Fixture Cord. Replace X ₁ with 3'-0" or 6'-0" for cord length. Replace X ₂ with required voltage: 1=120V; 2=208V; 3=240V; 4=277V; 5=480V; 6=347V
-GR	Gray Lektrocoat® Finish on housing. Replaces WH in catalog number.
-JP	Job Pack. Me: for carton packaging of ballast housing to reduce corrugated waste disposal. For shipment to jobsite only.
-LRJ ²	Lower Luminaire Retainer - A snap-in cable on housing secures reflector to ballast housing.
-MM	No Mounting Method - Neither Stick-On® nor Quick-On® provided with luminaire. Mounting method must be ordered as an accessory. Option used for applications requiring mounting method supplied in advance of luminaire.
-OSS	Quartz Standby System - On when power is restored. Off when HID lamp restrikes. Wattage of quartz lamp (not included) may not exceed wattage of HID lamp. (250W max. recommended). Uses 120V DC bayonet base lamp. Factory wired.



Hubbell Lighting, Inc.

Hubbell Lighting, Inc., 2000 Electric Way, Charlottesville, Virginia 24073, (540) 382-8111 • Fax (540) 382-1526 • <http://www.hubbell-lig.com/>
 Hubbell Canada, Inc., 870 Brook Road South, Pickering, Ontario L1W1Z8, (905) 839-1136 • Fax (905) 839-8108 • <http://www.hubbell-canada.com/>

SECTION II

LIST OF DRAWINGS AND SPECIFICATIONS

SUPERBAY I WA SERIESStandard Grade 4' Iron
Prismatic Acrylic Reflector**BL-WAZZ**

OPTIONS — Factory installed. Order with fixture by adding suffix.

Suffix	Description
-QST	Quartz standby with time delay - On when power is restored, Off when HID lamp re-ignites and has warmed up. Wattage not to exceed wattage of HID lamp (250 watt max recommended) uses 120 volt DC bayonet base lamp. Factory wired.
-SLD-1	Switch Level (flaming with 120V control). ⁸
-SLD-2	Switch Level (flaming with 24V control). ⁸
-SLD-3	Switch Level (flaming with 277V control). ⁸
-SO	Stick-On® Thru Wire Outlet Box for 3/4" pendant or side entry conduit
-SOF (X ₁)	Stick-On® Thru Wire Outlet Box, single fuse (included) for 3/4" pendant or side entry conduit (specify voltage) ⁸
-SOFF (X ₂)	Stick-On® Thru Wire Outlet Box, double fuse (included) for 3/4" pendant or side entry conduit (specify voltage) ⁸
-TRR(X ₃) ^{2,7}	Top Luminaire Retainer - Chain secures ballast housing to structure when additional safety precautions are required. Shipped in housing carton. Specify length. Recommended maximum slack - 3'.

Note: To specify core length substitute "C" as follows: 2-2 Ft., 4-4 Ft., 6-6 Ft., 8-8 Ft., 10-10 Ft., 12-12 Ft.

1. To specify voltage substitute "X₁" as follows: 1-120V, 2-208V, 3-240V, 4-277V, 5-480V, 6-547V

2. Luminaire retainers reduce risk of equipment falling.

3. To specify voltage substitute "X₂" as follows: 1-120V, 4-277V, 6-347V

4. To specify voltage substitute "X₃" as follows: 3-208V, 3-240V, 5-480V

5. For Motion Sensor and Switch Level let surface Panel accessories see Controls on page 35d

6. Twist-Lock plug.

7. To specify length, substitute (X₃) as follows: 6-6', 10-10', 12-12', 16-16'.

ACCESSORIES — Must be ordered separately

Catalog Number	Description
B-LLR ¹	Lower Luminaire Retainer - 2' cable secures reflector to ballast housing
B-TLR(X ₁) ^{1,8}	Top luminaire retainer - Chain secures ballast housing to structure when additional safety precautions are required. Specify length.
BL-FLUSH-MT-KIT	Adapter bracket for mounting CH-WA22/WA22 reflector flush to the bottom of the Superbay ballast housing.
BL-QO	Quick-On® 3/4" pendant mount.
BL-SO	Stick-On® thru wire outlet box for 3/4" pendant or side entry conduit.
BL-SOF	Stick-On® single fusing (fuse not included) thru wire outlet box for 3/4" pendant or side entry conduit mount with single fuse holder.
BL-SOFF	Stick-On® double fusing (fuses not included) thru wire outlet box for 3/4" pendant or side entry conduit mount with two fuse holder.
X WAZ-ENC	22" Flat Acrylic lens - 1/8" acrylic lens for "WA" acrylic reflector. (40°C maximum operating temperature with lens in place in reflector) <i>Bottom Enclosure</i>
WA22-CDL	22" Conical Acrylic - Conical drop lens for "WA" acrylic reflector (40°C maximum operating temperature with lens in place in reflector)
WA22-DLR	Dropped lowbay reflector lens for 22" WA acrylic reflector (40°C maximum with lens in place in reflector)
WG-23	23" Wireguard - corrosion resistant, welded steel with center lamp access.



Hubbell Lighting, Inc.

Hubbell Lighting, Inc., 2000 Electric Way, Christiansburg, Virginia 24073, (540) 382-8111 • Fax (540) 382-1828 • <http://www.hubbell-lt.com>
 Hubbell Canada, Inc., 870 Brock Road South, Pickering, Ontario L1W 1Z8, (905) 836-1138 • Fax (905) 836-8108 • <http://www.hubbell-canada.com>

290 0300860

GE SUPPLY

SUPERBAT I TIA SERIES

Prismatic Acrylic Reflector

10:21:30 P.M.

01-13-2006

8/5

DL-WALL

ACCESSORIES — Must be ordered separately

Catalog Number	Description
MOUNTING ACCESSORIES	
FHE-XXX⁴	Die Cast Aluminum Power Hook with 20A Twist-Lock® Receptacle - ceiling or 3/4" pendant mount, with 3/4" side entry for thru wiring. Cord, Hook/Loop and plug (20 amp) included.
FHE-XXX-L^{5,6}	As above, except cord, Hook/Loop, and plug not included.
SY3-XXX-2⁴	Rugged Steel Power Hook with 20A Twist-Lock® Receptacle - pendant or surface mount, 3/4" thru wiring capability. Cord, Hook/Loop and plug (20 amp) included.
SY3-XXX-L^{5,6}	As above, except cord, Hook/Loop and plug not included.

1. Luminaire recessed/safety cables reduce risk of equipment falling.
2. Cord, Hook/Loop, and Plug must be added to fixture as option, example: "CBLHP"
3. Cord, Hook/Loop, and Dead Front Plug must be added to fixture as option, example: "DFP"
4. To specify voltage, replace "XXX" with 120, 208, 240, 277, 307, 480.
5. To specify length, substitute "L," as follows: 5-5', 10-10', 12-12', 16-16'.

NEMA CONFIGURATIONS

Voltage	Description	Plugs ¹		Receptacles
		NEMA 6	Plug P	NEMA 6
20 Amp Twist-Lock Plugs and Receptacles				
120		LS-20P	2311	LS-20R
208		LS-20P	2321	LS-20R
240	2 pole, 3 wire grounding	LB-20P	2321	LB-20R
277		L7-20P	2331	L7-20R
480		LS-20P	2341	LS-20R
15 Amp Twist-Lock Plugs and Receptacles				
120		LS-15P	4780C	LS-15R
208	2 pole, 3 wire grounding	LB-15P	4570C	LB-15R
240		LS-15P	4570C	LS-15R
277		L7-15P	4770C	L7-15R

Note: All plugs used are manufactured by Hubbell Wiring Device-Kelleys.
 1. CSA certified.



Hubbell Lighting, Inc., 2000 Electric Way, Christiansburg, Virginia 24073, (540) 362-4111 • Fax (540) 362-1528 • <http://www.hubbell-lt.com/>
 Hubbell Canada, Inc., 670 Brock Road South, Pickering, Ontario L1W1Z8, (905) 830-1134 • Fax (905) 830-8108 • <http://www.hubbell-canada.com/>

SECTION III

CLARIFICATIONS/ASSUMPTIONS/ QUALIFICATIONS

CLARIFICATIONS/ASSUMPTIONS/QUALIFICATIONS

- 1) Permit not required.**

SECTION IV

GMP COST SUMMARY

Cost of the Work:	\$ 104,533.00
C.M. Fee:	\$ 10,454.00
Total GMP for this Project:	\$ 114,987.00

Alternate:

Provide galvanized structure in lieu of painted structure.

Add:	\$ 10,450.00
------	--------------

TERRY PARK

CONCRETE	\$	11,636.00
STEEL	\$	57,857.00
ELECTRICAL	\$	20,300.00
PAINTING	\$	6,500.00
SITE REPAIRS	\$	1,000.00
GENERAL CONDITIONS	\$	7,240.00
C.M.FEE	\$	10,454.00
TOTAL	\$	114,987.00

ALTERNATE**PROVIDE GALVANIZED IN LIEU OF PAINT**

STEEL	\$	16,000.00
PAINTING	\$	(6,500.00)
C.M. FEE	\$	950.00
TOTAL ADD	\$	10,450.00

PROJECT: LEE CO. TERRY PARK**ADMINISTRATIVE/GENERAL CONDITIONS BREAK DOWN**

<u>ITEM</u>	<u>QUANTITY</u>	<u>UNIT</u>	<u>MULTIPLIER</u>	<u>BID</u>
PROJECT SUPERVISOR	4	\$ 2,500.00	0.1	\$ 1,000 00
PROJECT MANAGER	4	\$ 2,850.00	0.1	\$ 1,140 00
PROJECT ADMINISTRATOR				\$..
LABOR CLEAN UP	4	\$ 400.00	1	\$ 1,600 00
TOOLS/EQUIPMENT				\$..
INITIAL TRAILER SET UP & REMOVAL		\$ 630.00		
TRAILER		\$ 314.00	1	\$..
PORTABLE TOILET		\$ 69.00	1	\$..
TEMP. WATER/ BY OWNER				\$..
TEMP. POWER		\$ 145.00	1	\$..
TEMP. TELEPHONE		\$ 60.00	1	\$..
DUMPSTER	2	\$ 500.00	1	\$ 1,000 00
HAZARDOUS WASTE REMOVAL		\$ 5,700.00	1	\$..
BLDG. PERMIT/ BY OWNER				\$..
PLAN REVIEW				\$..
IMPACT FEE/ BY OWNER				\$..
NIGHT/WEEKEND PREMIUM				\$..
EQUIPMENT RENTAL				\$..
FIRE PROTECTION				\$..
TRUCK	0	\$ 450.00	1	\$..
GAS	0	\$ 50.00	1	\$..
SIGNAGE/BARRICADES	1	\$ 500.00	1	\$ 500.00
LIABILITY INSURANCE		\$ 1,200.00	1	\$..
TESTING/SURVEYING		\$ 7,500.00	1	\$..
BUILDERS RISK INSURANCE				\$..
PLANS	0	\$ 35.00	1	\$..
FINAL CLEAN	1	\$ 2,000.00	1	\$ 2,000.00
PROJECT TOTAL				\$ 7,240.00

PROPOSALS

STRUCTURE

**RABER INDUSTRIES, INC., 2190 SEBASTIAN CT, ALVA, FL 33920
PHONE 239-728-5527 - FAX 239-728-5526 - TOM RABER CELL. 239-229-2957**

TO: CHRIS-TEL DATE: 12/21/2005
FAX: REVISION #1
ATTN: HOWARD

PROJECT: TERRY PARK BATTING CAGE ROOF LOCATION: FORT MYERS, FL

BUDGET PRICE TO FURNISH & INSTALL

- 1 COLUMNS & BEAMS FOR METAL BUILDING 60 X 70
- BEAM FRAMES SPAN 60-0 DIRECTION
- ROOF PURLINS AND FRAMES ARE PRIME PAINTED ONLY
- ROOF SHEETS ARE STANDARD MBCI SIGNATURE 200 COLOR
- X-BRACING 2 PLACES IN ROOF AND 2 PLACES IN WALLS AS REQUIRED
- NO WALL FRAMING IS INCLUDED
- WE INCLUDE SEALED DRAWINGS FOR ABOVE ITEMS
- EAVE HEIGHT APPROXIMATELY 14'-0"; ROOF SLOPE APPROX. 2": 12"

EXCLUSIONS:

- 1 CONCRETE SLAB (EXISTING) OR ANY NEW CONCRETE FOOTERS OR GRADE BEAMS
- 2 ANY GALVANIZING OR ANY FINISH PAINTING OF ANY ITEMS
- 3 PERMIT, SURVEY, INSPECTION OR TESTING FEES, BONDS
- 4 ANY ITEMS NOT SPECIFICALLY LISTED ABOVE

BID QUALIFICATIONS:

- 1 OTHERS ARE RESPONSIBLE FOR CONCRETE SLAB & FOOTER DESIGN AND INSTALLATION. OTHERS ARE TO PROVIDE ADEQUATE CRANE ACCESS ADJACENT TO OUR WORK. ALL SCHEDULES DEPEND ON ENGINEER'S AND SUPPLIERS' LEAD TIMES.

PRICE IS VALID A MAXIMUM OF 30 DAYS FROM DATE

SCHEDULES TO BE MUTUALLY AGREED UPON. DELIVERIES ARE SUBJECT TO SUPPLIER'S AND OUR SCHEDULES. PAGE 1 OF 1

PRICE: \$57,857.00
STRUCT: GRAY
JOIST:
RAILS:
SALES TAX INCLUDED - YES
TERMS: NET 30 DAYS

THOMAS E. RABER, JR., PRESIDENT

ACCEPTED DATE: _____

BY: _____

**RABER INDUSTRIES, INC., 2190 SEBASTIAN CT, ALVA, FL 33920
PHONE 239-728-5527 - FAX 239-728-5526 - TOM RABER CELL 239-229-2957**

TO: CHRIS-TEL DATE: 12/21/2005
FAX: REVISION #1
ATTN: HOWARD

PROJECT: TERRY PARK BATTING CAGE ROOF LOCATION: FORT MEYERS, FL

BUDGET PRICE TO FURNISH & INSTALL

- 1 COLUMNS & BEAMS FOR METAL BUILDING 60 X 70
- BEAM FRAMES SPAN 60-0 DIRECTION
- ROOF PURLINS AND FRAMES ARE PRIME PAINTED ONLY
- ROOF SHEETS ARE STANDARD MBCI SIGNATURE 200 COLOR
- X-BRACING 2 PLACES IN ROOF AND 2 PLACES IN WALLS AS REQUIRED
- NO WALL FRAMING IS INCLUDED
- WE INCLUDE SEALED DRAWINGS FOR ABOVE ITEMS
- EAVE HEIGHT APPROXIMATELY 14'-0"; ROOF SLOPE APPROX. 2": 12"

**** NOW REVISED TO GALVANIZED STEEL FRAME, PURLINS, AND GALVALUME SHEETS ****

EXCLUSIONS:

- 1 CONCRETE SLAB (EXISTING) OR ANY NEW CONCRETE FOOTERS OR GRADE BEAMS
- 2 ANY GALVANIZING OR ANY FINISH PAINTING OF ANY ITEMS
- 3 PERMIT, SURVEY, INSPECTION OR TESTING FEES, BONDS
- 4 ANY ITEMS NOT SPECIFICALLY LISTED ABOVE

BID QUALIFICATIONS:

- 1 OTHERS ARE RESPONSIBLE FOR CONCRETE SLAB & FOOTER DESIGN AND INSTALLATION. OTHERS ARE TO PROVIDE ADEQUATE CRANE ACCESS ADJACENT TO OUR WORK. ALL SCHEDULES DEPEND ON ENGINEER'S AND SUPPLIERS' LEAD TIMES.
- 2 GALVANIZING IS A LONG LEAD TIME ITEM.

PRICE IS VALID A MAXIMUM OF ** 30 ** DAYS FROM DATE

SCHEDULES TO BE MUTUALLY AGREED UPON. DELIVERIES ARE SUBJECT TO SUPPLIER'S AND OUR SCHEDULES. PAGE 1 OF 1

PRICE: \$73,857.00
STRUCT: GALV
JOIST:
RAILS:
SALES TAX INCLUDED - YES
TERMS: NET 30 DAYS

THOMAS E. RABER, JR., PRESIDENT

ACCEPTED DATE: _____

BY: _____

CONCRETE

O.B.C. Ogden Brothers Construction, Inc.

1141 Sun Century Road Suite 100
Naples, FL 34110

(239) 289-5798
Fax: (239) 592-7649

PROPOSAL

Date: December 29, 2005
Job Name: Terry Park - Column Footers

The following is a breakdown of our proposal for 12 4'x4'x4' concrete footers cut into existing 4" slab for Terry Park. Work includes cutting existing slab, excavation of footer, steel, concrete, setting in-beds if necessary, place concrete, finish, clean-up.

Labor	\$ 5,850
Concrete	\$ 3,911
Steel	\$ 1,250
Materials	\$ 625
Total	\$11,636

Exclusions:
Does not include permit/inspection fees
Dumpster for material removal provided by others on-site.

Please send contract if in agreement with the above pricing information.

Rob Ogden
OBC - President
Company - Title

Howard Wheeler
Chris-Tel Company -- President
Company - Title

Date

Date

PAINT

NANCE PAINTING

Commercial — Residential — Industrial _____

January 10, 2006

**The Chris-Tel Company
RE: Terry Park Building**

Painting of structural steel building

Price: \$8,500.00

Bill Nance

ELECTRIC



Current Electric Service, Inc.

5701 DIVISION DRIVE SUITE #
FORT MYERS, FL 33905
(239) 494-0030
FAX (239) 444-0331

The ChrisTel Co.
2546 Edison Ave.
Ft. Myers, FL 33901

1/13/06

Reference: Terry Park / Batting Cages Lighting

We hereby propose to furnish all labor and material necessary to provide a complete electrical installation in accordance with the provided drawings, specifications, and the following scope of work as detailed by Current Electric Service, Inc.

- 1) Provide and install (24) low bay light fixtures.
- 2) Provide and install (1) double duplex receptacle.
- 3) Utilize existing service for power requirements.

Base Bid.....	Litbonia Package.....	\$21,000.00
Base Bid Alternate #1.....	Hubbell Package.....	\$20,300.00
Base Bid Alternate #2.....	Musco Package.....	\$52,400.00

Musco package does not include separate switching of each bay.

Payable on the following terms: Invoiced as per contract draw
This proposal is void if not accepted in writing within 30 days.

Accepted by: _____ Date: _____
Authorized Representative

Sincerely,
Current Electric Service, Inc.,

Duane Chamberlain II, Project Manager

SECTION VI

PROJECT SCHEDULE

TO BE DETERMINED

SECTION VII

SAFETY PROGRAM

SAFETY PROGRAM

- A. Provide access to building at all times.
 - 1) To coordinate with personnel and schedules.
 - 2) Fence - cones, signage or barricades. Fence for blockage.
 - 3) Advise security and staff of work areas and times.

- B. Safety Equipment
 - 1) Maintain integrity of alarm system for all buildings:
 - (a) Cover alarm sensors with plastic and tape; no false alarms due to dust.
 - 2) Verify location of all fire extinguishers and blankets. Check charge and accesses.
 - 3) Maintain clear egress at all times (i.e. Construction material ladders, debris, etc.)
 - 4) Maintain ventilation and lighting (emergency lighting) for construction.
 - 5) First aid and emergency phone numbers on hand.
 - 6) All visitors must report to field office and will be advised to use eye protection and hard-hats.
 - 7) Construction personnel to use hard-hats.

- C. Use of lifts, scaffold and trash chute.
 - 1) Plan and location of trash chute and dumpsters.
 - 2) Barricade of chute area - signage and fence.
 - (a) Fence dumpster staging area.
 - 3) Protect railing at second floor - gate for trash chute.

- D. Regular safety meetings with subcontractors and personnel.
 - 1) Shirts with sleeves, appropriate dress for appearance and safety, no smoking or eating except in designated areas, loud noise or inappropriate language prohibited.
 - 2) Authorized personnel only to operate lifts and other machinery, use of spotter on the ground to insure safe placement and movement of lifts, etc.

E. Protection from fumes, etc.

- 1) Any use of paint, solvents, cleaning agents, etc. will be coordinated to be used at times of least occupancy of building or at such times the fumes can disperse over the weekend to minimize discomfort to occupants.
- 2) MSDS Sheets are available upon request and a copy is in company vehicles.

F. Provide detail of isolation of areas.

- 1) Post signage for both pedestrians and construction personnel to avoid intrusion of unauthorized personnel in construction area and to keep construction personnel away from egress areas and office personnel.
- 2) Provide passive gate at isolation areas to allow for emergency egress for construction personnel.

This agreement entered into as of the day and year first above written.

SUBMITTED BY:

THE CHRIS-TEL COMPANY

ACCEPTED BY:

**LEE COUNTY BOARD OF
COMMISSIONERS**

Howard L. Wheeler Jr., President
