

**Lee County Board Of County Commissioners
Agenda Item Summary**

Blue Sheet No. 20021328

1. REQUESTED MOTION:

ACTION REQUESTED: Hold first public hearing on resolution designating Veterans Pkwy. and a portion of the Midpoint Memorial Bridge Corridor as a limited access facility and establish connection points; direct to second public hearing at 5:00 p.m. January 28, 2003.

WHY ACTION IS NECESSARY: The designation as a limited access facility will preserve the capacity of the road and enhance future safety.

WHAT ACTION ACCOMPLISHES: Establishes the connection points on Veterans Pkwy. Corridor from the Caloosahatchee River to Pine Island Road (SR 78).

2. DEPARTMENTAL CATEGORY:
COMMISSION DISTRICT # 01,
04

5:00 #4

3. MEETING DATE:

01-14-2003

4. AGENDA:

CONSENT

ADMINISTRATIVE
APPEALS

PUBLIC
WALK ON

TIME REQUIRED:

5. REQUIREMENT/PURPOSE:
(Specify)

<input checked="" type="checkbox"/> STATUTE	Ch. 338 and 125
<input type="checkbox"/> ORDINANCE	
<input type="checkbox"/> ADMIN. CODE	
<input type="checkbox"/> OTHER	

6. REQUESTOR OF INFORMATION:

A. COMMISSIONER

B. DEPARTMENT Transportation

C. DIVISION Administration

BY: Scott Gilbertson, Director

7. BACKGROUND: On August 11, 1998, the Board adopted Resolution 98-08-20 designating Veterans Parkway and a portion of the Midpoint Memorial Bridge as an expressway with established access points. In adopting the Resolution, the Board recognized that the Midpoint Memorial Bridge Corridor and Veterans Parkway, from Del Prado to Santa Barbara Boulevard had been constructed to operate as an expressway allowing for the safe and relatively unimpeded movement of large volumes of through traffic. Since 1998, an extension of Veterans Parkway from Santa Barbara Boulevard to Pine Island Road has been designed and is under construction. This extension is also designed for safe and relatively unimpeded movement of large traffic volumes.

CONTINUED ON PAGE 2

8. MANAGEMENT RECOMMENDATIONS:

9. RECOMMENDED APPROVAL:

A Department Director	B Purchasing or Contracts	C Human Resources	D Other	E County Attorney	F Budget Services				G County Manager
<i>11/14/02</i> <i>[Signature]</i>	NA	NA		<i>[Signature]</i> 11-22-02	OA <i>RK</i> 11/22	OM <i>[Signature]</i> 11/25/02	Risk <i>[Signature]</i> 11/25/02	GC <i>[Signature]</i> 11-22-02	<i>[Signature]</i> 11-20-02

10. COMMISSION ACTION:

APPROVED
 DENIED
 DEFERRED
 OTHER

Rec. by CoAtty
Date: <i>11/21/02</i>
Time: <i>11:45 am</i>
Forwarded To:

RECEIVED BY COUNTY ADMIN. <i>RK</i>
<i>11-22 11:10</i>
FORWARDED TO: <i>[Signature]</i>

Blue Sheet #: 20021328

Page No.: 2

Subject: Veterans Parkway Limited Access Resolution

Lee County DOT is now seeking to designate Veterans Parkway from Santa Barbara to Pine Island Road and the Midpoint Memorial Bridge Corridor as a limited access facility in accordance with F.S. §338.01. Designation as a limited access facility will serve to maintain the integrity of the facility as an expressway. In accordance with F.S. §338.01, the attached resolution will serve to establish fixed access points and strictly limit the creation of any additional access points to only those necessary to serve the public interest. Additionally, any amendment to the resolution will require action by a super majority of the Board.

County staff recommends adoption of the resolution as a necessary step to preserve the public safety and traffic capacity provided by Veterans Parkway as designed and constructed.

Attachments: Resolution

S:\DOCUMENT\Blue Sheet\2002\Veterans Pkwy-Midpoint limited access.doc

LEE COUNTY RESOLUTION NO. _____

A RESOLUTION OF THE BOARD OF COUNTY COMMISSIONERS OF LEE COUNTY, FLORIDA DESIGNATING AND ESTABLISHING MIDPOINT MEMORIAL BRIDGE AND VETERANS PARKWAY AS A LIMITED ACCESS FACILITY IN ACCORDANCE WITH F.S. CHAPTER 338; SETTING PERMANENT ACCESS POINTS; REQUIRING A SUPER MAJORITY VOTE TO AMEND THIS RESOLUTION; AND REPEALING RESOLUTION 98-08-20.

WHEREAS, the Board of County Commissioners is considered the transportation authority in Lee County by virtue of the power granted in F.S. §125.01(m) to provide and regulate roads; and

WHEREAS, the Board, as the transportation authority, has the power to establish, designate and regulate limited access facilities in accordance with F.S. §338.01; and

WHEREAS, the Midpoint Memorial Bridge from the Caloosahatchee River to Del Prado Boulevard and Veterans Parkway from Del Prado Boulevard to Santa Barbara Boulevard has been constructed as a limited access facility with established permanent access points; and

WHEREAS, the approved design and construction plans for Veterans Parkway from Santa Barbara Boulevard to Pine Island Road (State Road 78) are consistent with the limited access facility requirements; and

WHEREAS, the design and access plans for the limited access facility were approved in conceptual form by both the Lee County Board of County Commissioners and the Cape Coral City Council prior to proceeding with construction; and

WHEREAS, the Board desires to officially designate and establish the Midpoint Bridge from the Caloosahatchee River to Del Prado Boulevard and Veterans Parkway from Del Prado Boulevard to Pine Island Road (State Road 78) as a limited access facility with fixed access points in accordance with F.S. §338.01; and

WHEREAS, the Board finds establishing the Midpoint Bridge and Veterans Parkway as a limited access facility is in the best interests of the public; and

WHEREAS, the Board has provided appropriate notice in accordance with F.S. §338.01(3) of the Board's intent to establish a limited access facility with designated access points as indicated in the attached Exhibit A.

NOW, THEREFORE, BE IT RESOLVED BY THE BOARD OF COUNTY COMMISSIONERS that:

1. The Midpoint Bridge from Caloosahatchee River to Del Prado Boulevard and Veterans Parkway from Del Prado Boulevard to Pine Island Road (State Road 78), as continuous segments of the same facility, are hereby designated and established as a limited access facility in accordance with F.S. §338.01. Attached Exhibit A sets forth the alignment and permanent access points.

2. Permanent access points on the designated Veterans Parkway Corridor are restricted to those locations identified on attached Exhibit A.

3. No public or private road, driveway or other type of access may be connected to the limited access facility without the prior approval of the Lee County Board of County Commissioners. Approval may be granted by amendment of this resolution only if the public interest will be served.

4. Amendment of this resolution requires a super majority (four affirmative votes) of the Board of county Commissioners.

5. Resolution 98-08-20 is hereby repealed and of no further force and effect.

The foregoing resolution was adopted by the Lee County Board of Commissioners by a motion by Commissioner _____, and seconded by Commissioner _____ and, when put to a vote, the result was as follows:

ROBERT P. JANES	_____
DOUGLAS R. ST. CERNY	_____
RAY JUDAH	_____
ANDREW W. COY	_____
JOHN E. ALBION	_____

DULY PASSED AND ADOPTED this _____ day of _____, 2002.

ATTEST:
CHARLIE GREEN

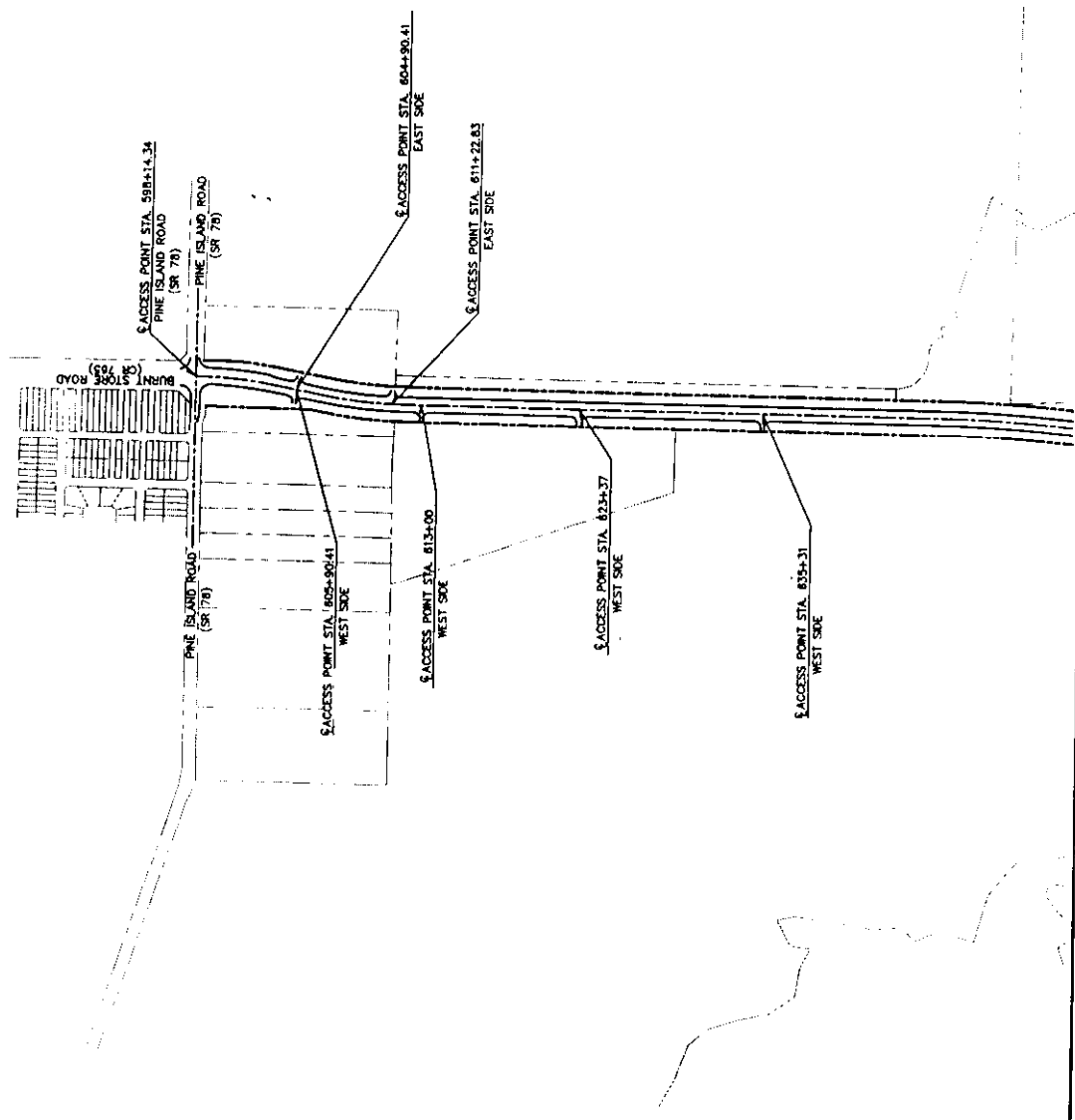
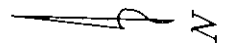
BOARD OF COUNTY COMMISSIONERS
OF LEE COUNTY, FLORIDA

BY: _____
Deputy Clerk

BY: _____
Chairman

APPROVED AS TO FORM:

BY: _____
County Attorney's Office



P:\CAD\2001\01-373\Veterans-access.dwg, Layout1, 08:45:28 AM



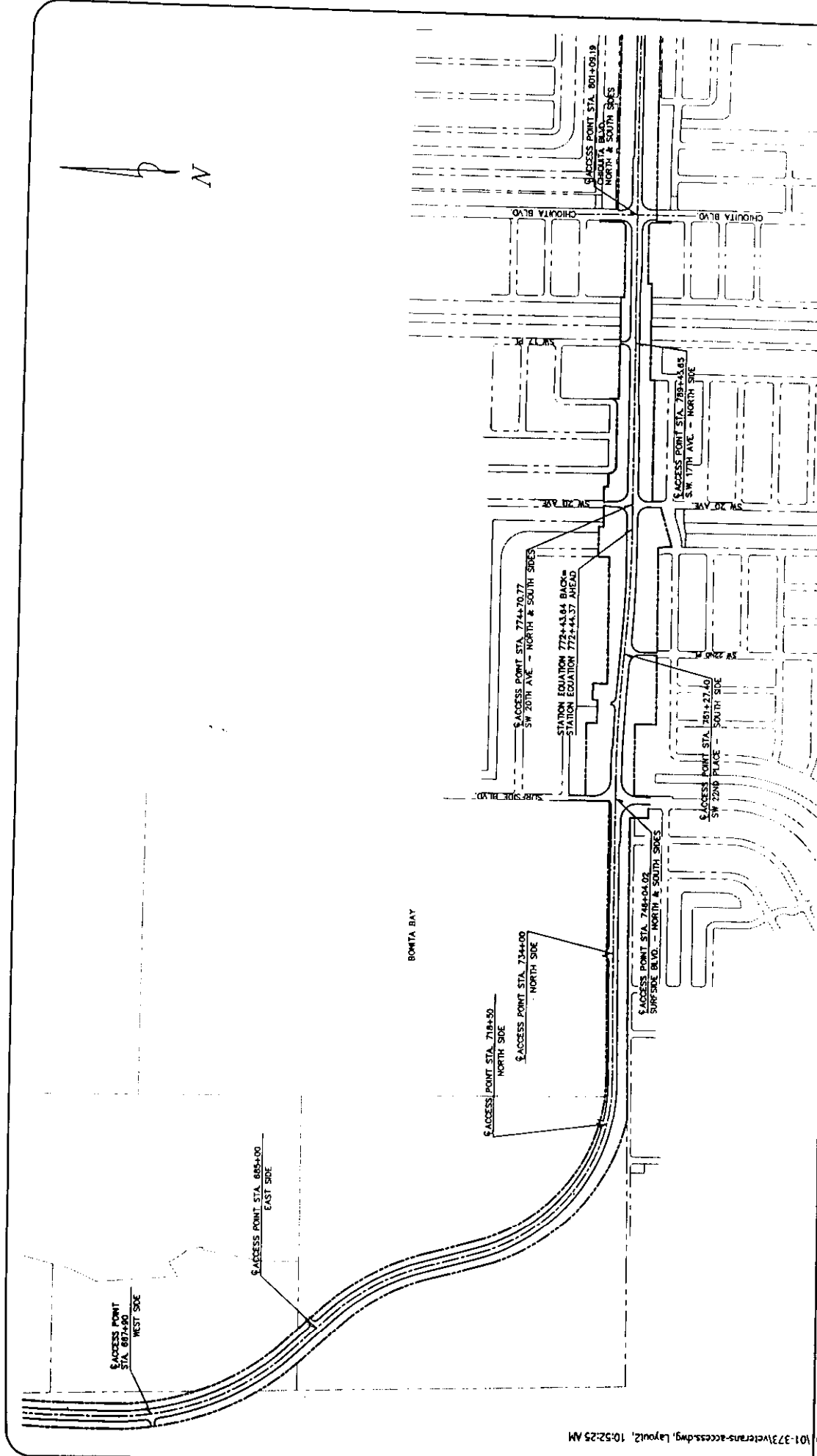
AVALON ENGINEERING, INC.
1628 CAPE CORAL PARKWAY E.
CAPE CORAL, FLORIDA
(941) 548-8556
PDP# 23128



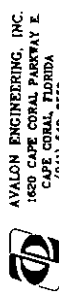
LEE COUNTY DEPARTMENT
OF TRANSPORTATION
Scott Gibbons, Acting Director
Don Hester, District Manager
(941) 335-2225

VETERANS PARKWAY
From Burnt Store Road / Pine Island Road (SR 78)
to the Caloosahatchee River
CONTROLLED ACCESS PLAN

EXHIBIT "A"
June 2002



P:\CAD\2001-373\Veterans-access.dwg, Layout2, 10:52:25 AM



AVALON ENGINEERING, INC.
1620 CAPE CORAL PARKWAY E.
CAPE CORAL, FLORIDA
(941) 549-8559
FDPE #3128

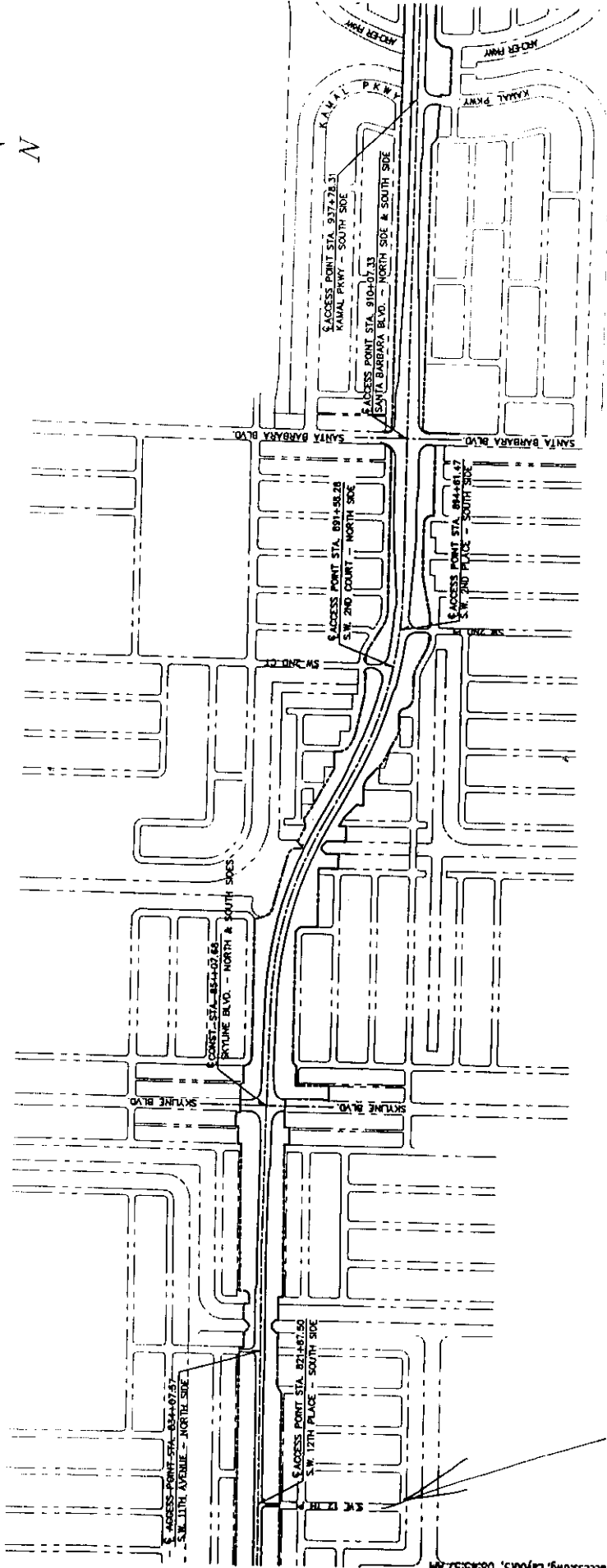
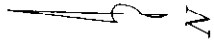


LEE COUNTY DEPARTMENT OF TRANSPORTATION
Scott Robertson, Acting Director
Don C. Johnson, Manager
(841) 337-2220

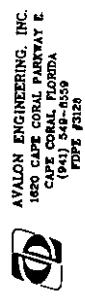
VETERANS PARKWAY
From Burnt Store Road / Pine Island Road (SR 78)
to the Caloosahatchee River
CONTROLLED ACCESS PLAN

EXHIBIT "A"
June 2002

SHEET 2 of 4



P:\CAD\200\101-373\vetrans-access.dwg, Layout3, 08:45:57 AM



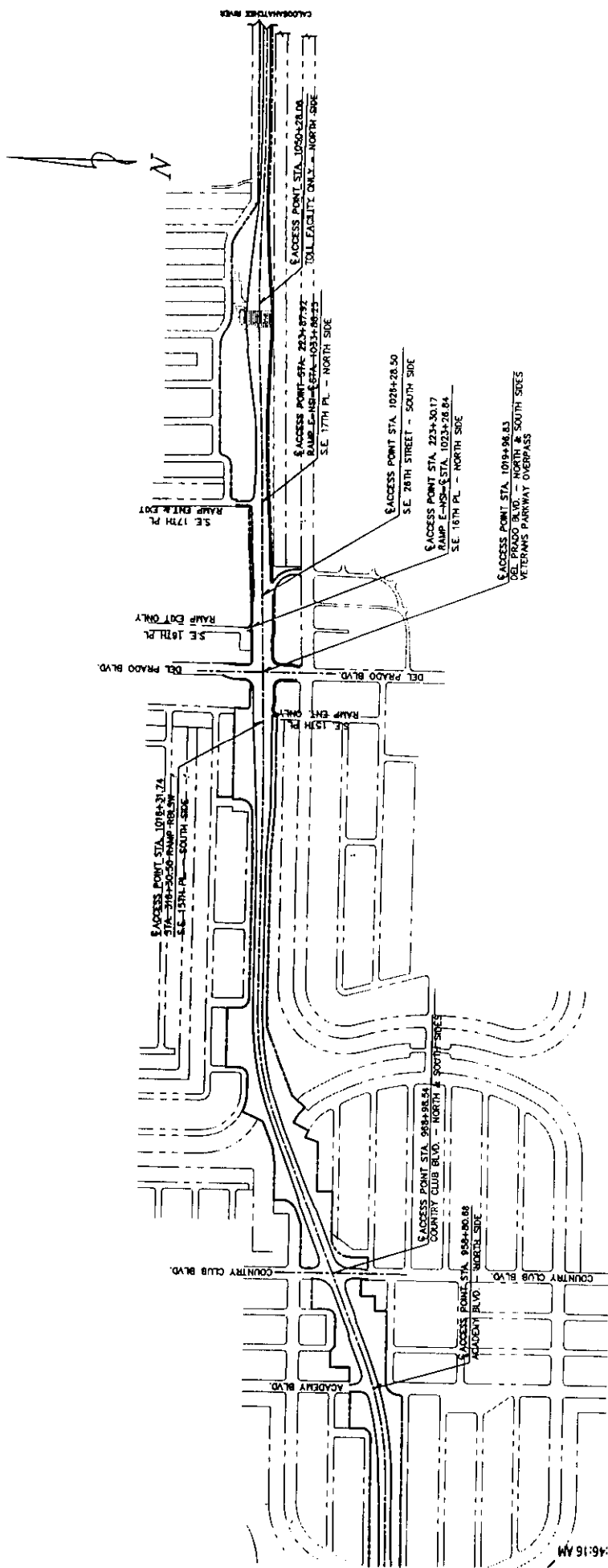
AVALON ENGINEERING, INC.
 1820 CAPE CORAL PARKWAY E.
 CAPE CORAL, FLORIDA
 (941) 548-6559
 PDP# 75128



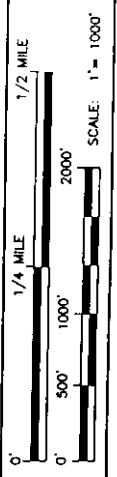
LEE COUNTY DEPARTMENT OF TRANSPORTATION
 Scott Gibberty, Acting Director
 Don Deberry, Project Manager
 (941) 353-2220

VETERANS PARKWAY
 From Burnt Store Road / Pine Island Road (SR 78)
 To the Caloosahatchee River
CONTROLLED ACCESS PLAN

EXHIBIT "A"
 June 2002



P:\CVD\200101-37\vetrans-access.dwg, Layout4, 08:46:16 AM



AVALON ENGINEERING, INC.
1820 CAPE CORAL PARKWAY E.
CAPE CORAL, FLORIDA
(941) 549-5559
FOPE #128



LEE COUNTY DEPARTMENT
OF TRANSPORTATION
Scott Gilbertson, Acting Director
Don Deberry, Project Manager
(941) 335-2520

VETERANS PARKWAY
From Burnt Store Road / Pine Island Road (SR 78)
to the Caloosahatchee River
CONTROLLED ACCESS PLAN

EXHIBIT "A"
June 2002