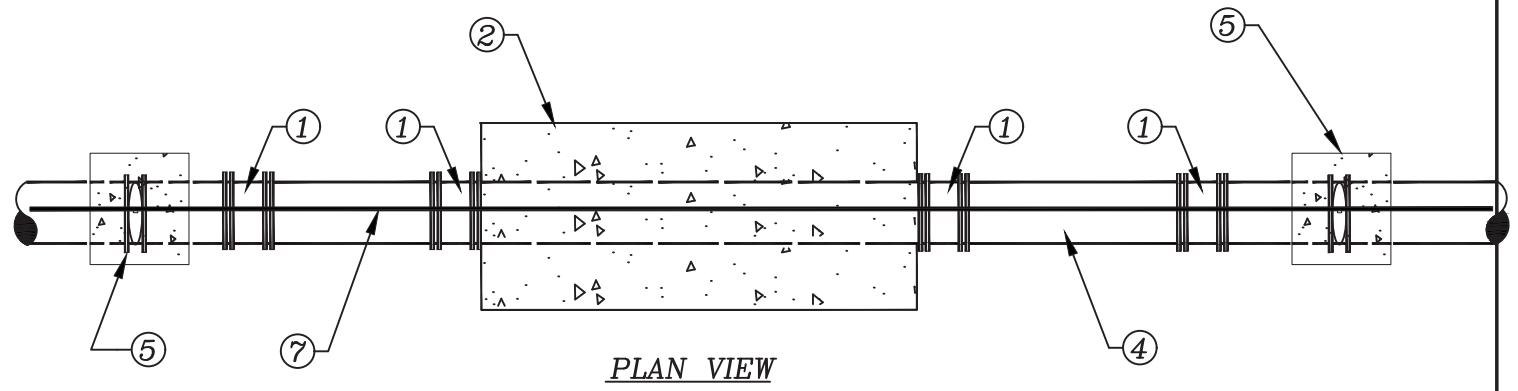
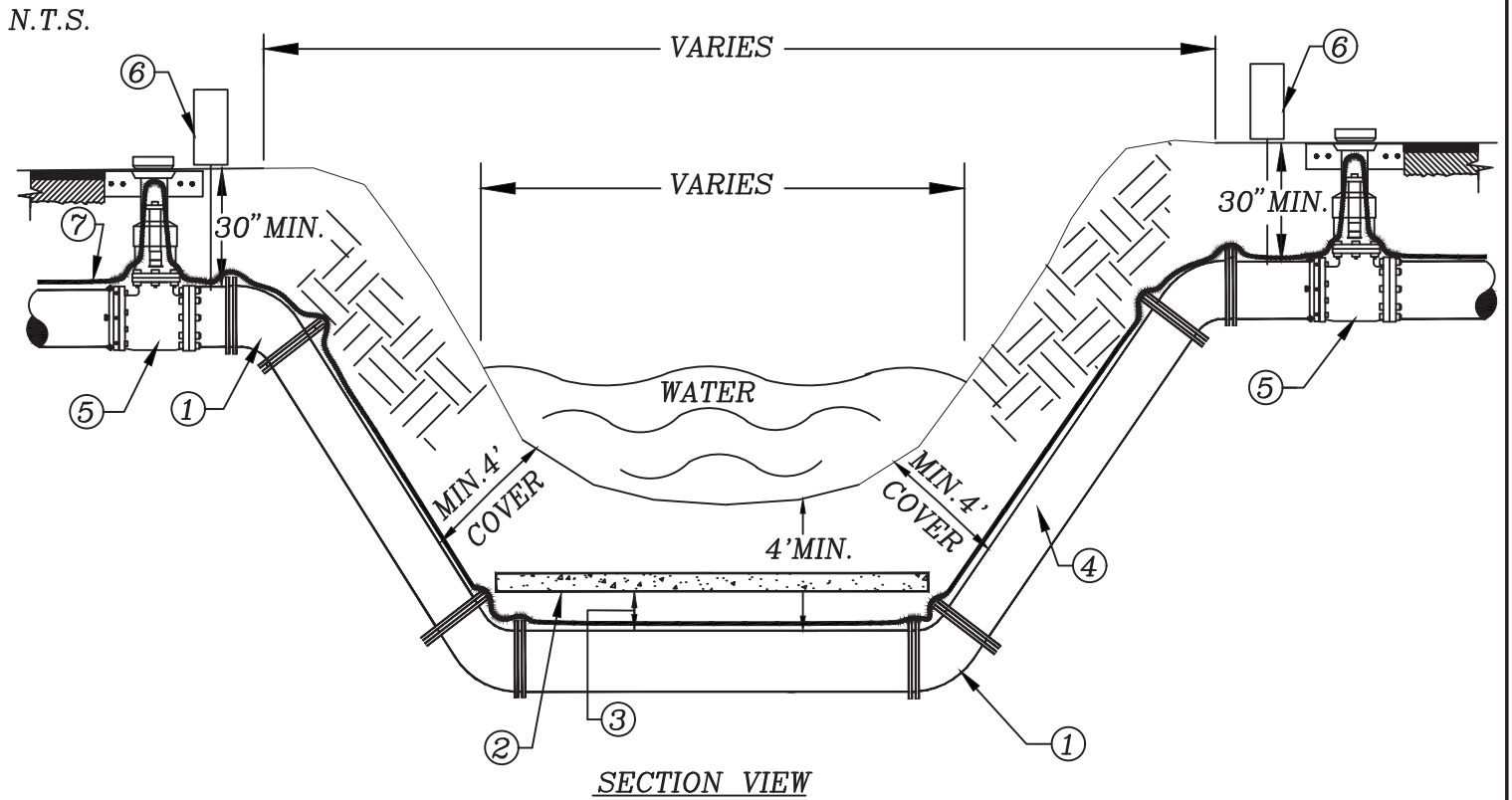


STANDARD DETAIL NO. 6.9

LEE COUNTY UTILITIES

SUBAQUEOUS CROSSING



- | | |
|--|---|
| <ul style="list-style-type: none"> ① 45° M.J. ELBOW RESTRAINED ② 2,500 MIN. P.S.I. CONCRETE PROTECTIVE PAD 4' WIDE MIN. X 4" THICK X OVERALL LENGTH OF PIPELINE CROSSING ③ 6" MIN. COMPACTED MATERIAL OR #57 STONE ④ USE PVC C-900 DR 14 MIN. FOR ALL SEWAGE FORCE MAINS. USE PRESSURE CLASS 350 DIP FOR ALL WATER MAINS | <ul style="list-style-type: none"> ⑤ GATE VALVE OR PLUG VALVE INSTALLATION PER LCU STANDARD DETAIL ⑥ AIR RELEASE VALVE (SEE APPROVED MATERIAL LIST) ⑦ 12 GAUGE DOUBLE INSULATED COPPER LOCATING WIRE (SEE LCU STANDARD DETAIL) |
|--|---|