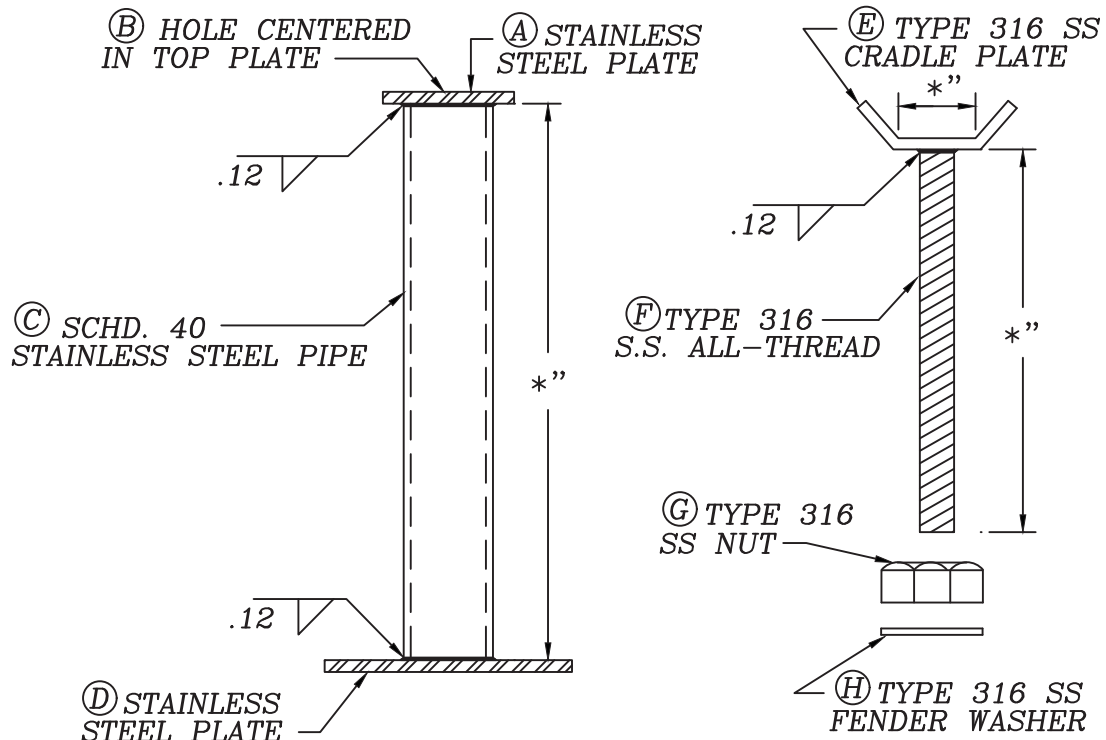


STANDARD DETAIL NO. 6.22

LEE COUNTY UTILITIES

PIPING SUPPORT



*\" LENGTH VARIES DEPENDING ON OBJECT BEING SUPPORTED
SEE TABLE THIS SHEET FOR DIMENSIONS A THRU H

PIPING SUPPORT

PIPING SUPPORT DIMENSIONS			
	FOR 3/4" & 1"	FOR 1-1/2" TO 3"	FOR 4" & LARGER
(A)	1/4" x 3" x 3"	1/4" x 3-1/4" x 3-1/4"	1/4" x 5" x 5"
(B)	1.0"	1.0"	1-1/2"
(C)	2.0"	2-1/2"	4"
(D)	1/4" x 6" x 6"	1/4" x 8" x 8"	1/4" x 10" x 10"
(E)	1/4" x 2" X 4"	1/2" x 2" X 4"	1/2" x 4" x 6"
(F)	3/4"	7/8"	1-1/4"
(G)	3/4"	7/8"	1-1/4"
(H)	1.0"	1.0"	1-1/2"

NOTE: 1. HOT DIPPED GALVANIZED STEEL MAY BE USED IN PLACE OF STAINLESS STEEL.