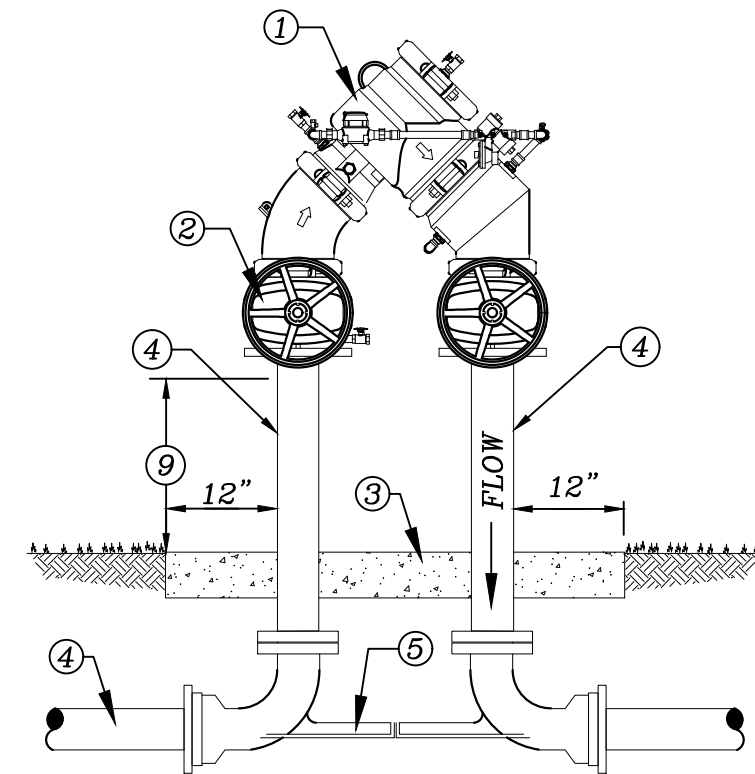
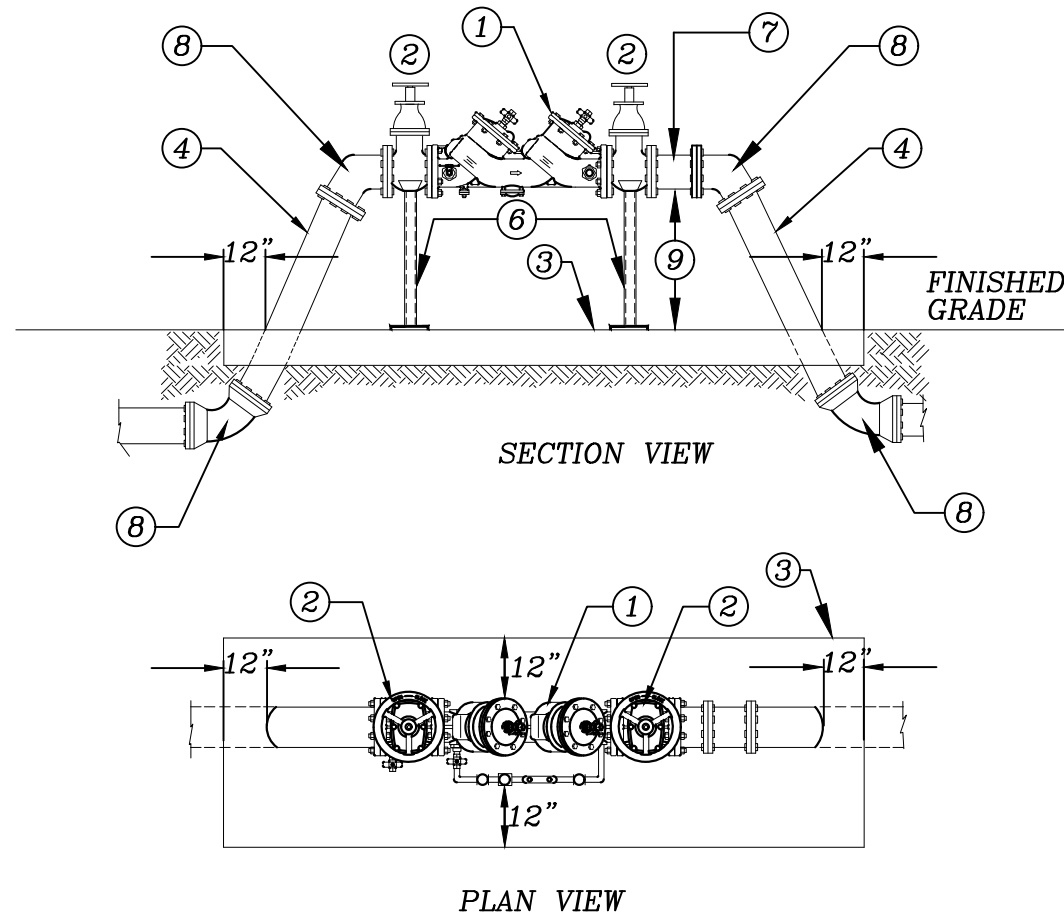
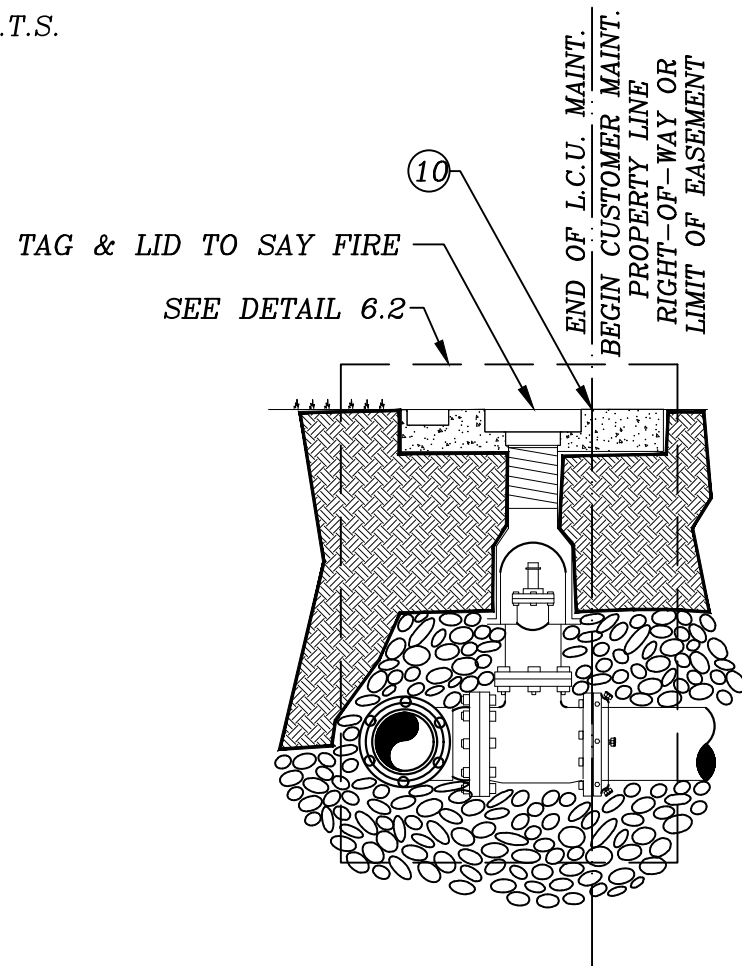


STANDARD DETAIL NO. 6.21 LEE COUNTY UTILITIES

CROSS CONNECTION & COMPACT CROSS CONNECTION CONTROL ASSEMBLIES FOR FIRE LINE

N.T.S.



- ① DOUBLE CHECK DETECTOR BACKFLOW PREVENTOR ASSEMBLY UL/FM APPROVED FOR FIRE SERVICE INSTALLATION WITH LOW FLOW BYPASS INDICATOR METER. (LEAD FREE)
(SEE APPROVED MATERIAL LIST)
- ② FLANGED GATE VALVE WITH RISING STEM AND RESILIENT SEAT (TYPICAL)
- ③ CONCRETE FOUNDATION 3,000 P.S.I. (TYPICAL) TO BE EXTEND 12" ON ALL SIDES FROM ABOVE GROUND PIPE, 4" THICK. REINFORCED 6 X 6 10/10 WELDED WIRE MESH MINIMUM
- ④ D.I.P. TO POINT OF CONNECTION
- ⑤ EPOXY COATED D.I.P. VALVE SETTER ASSEMBLY

- ⑥ HOT DIPPED GALVANIZED OR S.S. ADJUSTABLE PIPE STANDS
(SEE LCU STANDARD DETAIL #6.22)
- ⑦ 24" LONG FLANGE X PLAIN END SPOOL PIECE W/ UNIFLANGE ON PLAIN END LINE UP
- ⑧ 45° OR 90° ELBOW M.J. W/ RETAINER GLANDS ABOVE GROUND FITTINGS TO BE FLANGED
- ⑨ 18" MIN. TO 24" MAX. FROM FINISH GRADE TO LOWEST POINT ALL FITTINGS
- ⑩ GATE VALVE @ PROPERTY LINE. END OF LCU OWNERSHIP AND MAINTENANCE.

NOTES:

- A. ALL PAINTING TO BE IN ACCORDANCE WITH LCU STANDARDS.
(SEE GENERAL CONDITIONS SECTION)
- B. A REDUCED PRESSURE DETECTOR BACKFLOW ASSEMBLY SHALL BE USED WHEN HIGH HAZARDS, AS DEFINED BY AWWA M-14 (e.g. RISK OF CHEMICAL ADDITION, MEDICAL FACILITIES, INDUSTRIAL FACILITIES, PROPERTIES USING RECLAIMED WATER, ETC.) EXIST.
- C. ALL ABOVE GROUND PIPE WILL HAVE FLANGED END DUCTILE IRON PIPE, PRESSURE CLASS 350. ALL NUTS AND BOLTS SHALL BE STAINLESS STEEL.
- D. ALL PLANTING SHALL BE A MINIMUM OF 1.5' FROM THE EDGE OF SLAB, AND SHALL PROVIDE A 3' ACCESS OPENING.

REV: 04/13/2023

