

GENERAL SHEET NOTES

- MOTORIZED VALVE.
- OWNER PROVIDED VALVE. CONTRACTOR TO COORDINATE WITH VALVE MANUFACTURER AND ACTUATOR MANUFACTURER TO TEST AND CERTIFY CONDITION AND OPERATION OF THIS VALVING EQUIPMENT. REFER TO SECTION 16102 FOR MORE INFORMATION. THIS CERTIFICATION MUST BE COMPLETED BEFORE THE VALVING EQUIPMENT IS INSTALLED IN THE PIPING.

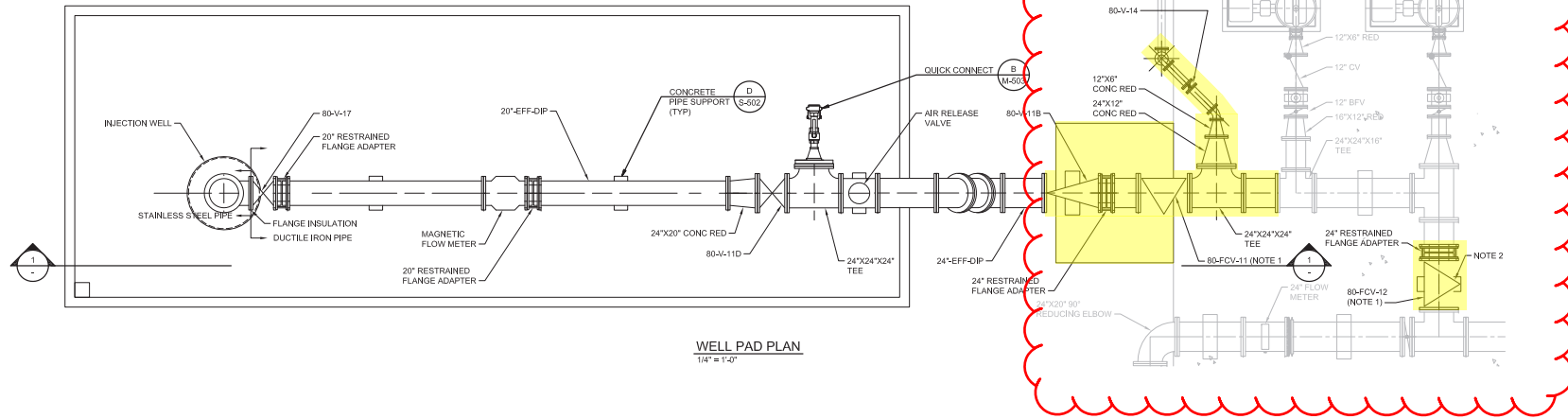


Black & Veatch Corporation
 4415 Metro Parkway, Suite 200
 Fort Myers, Florida 33916



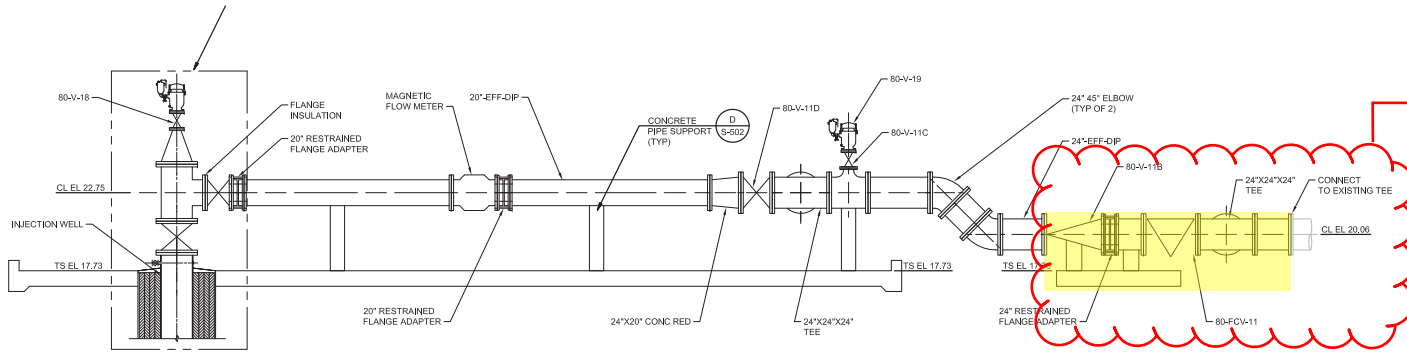
Digitally signed by
 Martin, Mark E.
 Date: 2023.12.19
 11:48:14 -05'00'

**TO BE
 CONSTRUCTED BY
 OTHERS**



WELL PAD PLAN
 1/4" = 1'-0"

**TO BE
 CONSTRUCTED BY
 OTHERS**



SECTION
 1/4" = 1'-0"

LEE COUNTY
 UTILITIES

THREE OAKS WATER
 RECLAMATION FACILITY
 DEEP INJECTION
 WELL IW-2

ISSUED FOR BID
 - NOT FOR
 CONSTRUCTION

REVISIONS AND RECORD OF ISSUE	
DESIGNED:	JP
DETAILED:	RSF
CHECKED:	PC
APPROVED:	MEM
DATE:	SEPTEMBER 2023
PROJECT NO.:	414567

PROCESS MECHANICAL

WELL PAD PLAN AND
 SECTION

M-103

OF



(SCALE BAR IS 4" AT FULL SCALE)

PLASTER: 11/2023 12:04:04 PM
 FILE: C:\DWG\AUTOCAD\BVA_A\BVA\DWG\20140709\WELL_PAD.DWG
 0/11/2023 12:04:04 PM