

# LEE COUNTY BOARD OF COUNTY COMMISSIONERS

## PUBLIC WORKS ADMINISTRATION - DEPARTMENT OF TRANSPORTATION

### PLANS OF PROPOSED

# SUMMERLIN ROAD & CYPRESS LAKE DRIVE INTERSECTION IMPROVEMENTS

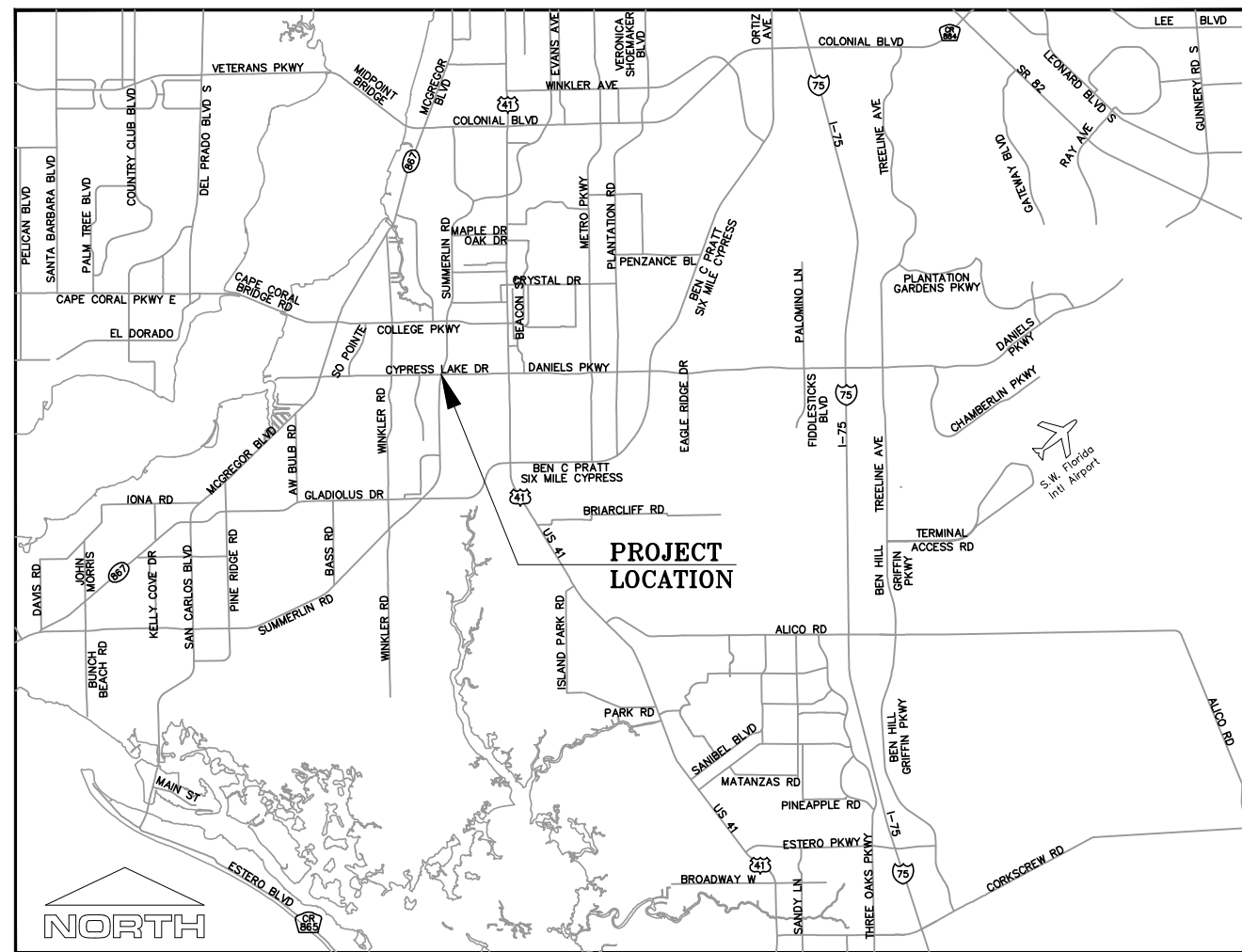
COMPONENTS OF CONTRACT PLANS SET  
 CONSTRUCTION PLANS  
 SIGNING & MARKING PLAN  
 SIGNAL MODIFICATION PLAN

## CONSTRUCTION PLANS

PROJECT NO. 6713

### INDEX OF ROADWAY PLANS

- 1) . . . . .COVER SHEET
- 2) . . . . .SUMMARY OF PAY ITEMS
- 3) . . . . .TYPICAL SECTION
- 4-7) . . . . .MILLING & RESURFACING PLANS
- 8-10) . . . . .CONSTRUCTION PLANS
- 11-14) . . . . .SIGNING & MARKING PLANS
- 15) . . . . .SIGNAL MODIFICATION PLAN



LOCATION MAP

LEE COUNTY, FLORIDA  
 PROJECT MANAGER: LEE WERST

ATTENTION IS DIRECTED TO THE FACT THAT THESE PLANS MAY HAVE BEEN REDUCED IN SIZE DURING REPRODUCTION. THIS MUST BE CONSIDERED WHEN OBTAINING SCALED DATA.

GOVERNING STANDARDS AND SPECIFICATIONS:  
 FLORIDA DEPARTMENT OF TRANSPORTATION, 2017-18 DESIGN STANDARDS AND REVISED INDEX DRAWINGS AS APPENDED HEREIN, AND JANUARY 2018 STANDARD SPECIFICATIONS FOR ROAD AND BRIDGE CONSTRUCTION, AS AMENDED BY CONTRACT DOCUMENTS.

FOR DESIGN STANDARDS GO TO THE FOLLOWING WEB SITE:  
<http://www.fdot.gov/roadway/>  
 FOR THE STANDARD SPECIFICATIONS FOR ROAD AND BRIDGE CONSTRUCTION CLICK ON THE "STANDARD SPECIFICATIONS" LINK AT THE FOLLOWING WEB SITE:  
<http://www.fdot.gov/programmanagement/>

THIS IS TO CERTIFY THAT THESE PLANS AND THE ASSOCIATED CONSTRUCTION PROJECT ARE IN SUBSTANTIAL COMPLIANCE WITH THE LEE COUNTY LAND DEVELOPMENT CODE WITH THE EXCEPTION OF THE FOLLOWING DEVIATIONS WHICH HAVE BEEN APPROVED BY THE DIRECTOR OF PUBLIC WORKS:

LIST OF DEVIATIONS

ROADWAY PLANS  
 ENGINEER OF RECORD

DEVELOPMENT ORDER APPROVED:  
 LEE COUNTY PUBLIC WORKS ADMINISTRATION

ROBERT KIMBALL PHELAN, P.E.  
 FLORIDA P.E. NO. 60391

DOUGLAS L. MEURER, P.E.  
 ASSISTANT COUNTY MANAGER, PUBLIC WORKS

L:\Design Projects\2015\150350201.dwg, 3/19/2018 1:13:34 PM

**CONSTRUCTION ITEMS**

ITEM NO	ITEM DESCRIPTION	UNIT	QUANTITY
101-1	Mobilization	LS	1
102-1	Maintenance of Traffic	LS	1
104-10-3	Sediment Barrier	LF	1080
104-18	Inlet Protection System	EA	5
110-1-1	Clearing & Grubbing	LS	1.00
110-4-10	Removal of Existing Concrete Pavement	SY	650
120-1	Roadway Excavation	CY	22.1
120-6	Embankment	CY	10.4
160-4	Type "B" Stabilization	SY	313
285-709	Optional Base Group 9	SY	223
327-70-1	Milling Existing Asphalt Pavement, 1"	SY	29752
334-1-13	S-I Asphalt Pavement, 2.5"	TN	28.3
334-1-13	S-III Asphalt Pavement, 1"	TN	2049.4
425-5	Adjust Manhole Top	EA	1
425-6	Adjust Valve	EA	2
520-1-10	Concrete Curb & Gutter, Type F	LF	648
520-2-1	Concrete Curb, Type A	LF	130
522-2	Concrete Sidewalk & Driveways, 6"	SY	439
527-2	Detectable Warning	SF	77
570-1-2	Performance Turf, Sod	SY	1224

**SIGNING & MARKING ITEMS**

ITEM NO	ITEM DESCRIPTION	UNIT	QUANTITY
700-1-50	Single Post Sign, Relocate	AS	2
710-90	Painted Pavement Markings, Final Surface	LS	
*	Retro-Reflective Pavement Markers, RPM's	EA	420
*	Painted Pavement Markings, Standard, White, Solid, 6"	GM	2.174
*	Painted Pavement Markings, Standard, White, Solid, 12"	LF	868
*	Painted Pavement Markings, Standard, White, Solid, 18"	LF	97
*	Painted Pavement Markings, Standard, White, Solid, 24"	LF	228
*	Painted Pavement Markings, Standard, White, Skip, 10'/30', 6"	GM	1.455
*	Painted Pavement Markings, Standard, White, 2/4' Dotted Guideline, 6"	GM	0.088
*	Painted Pavement Markings, Standard, White, Message	EA	2
*	Painted Pavement Markings, Standard, White, Arrows	EA	43
*	Painted Pavement Markings, Standard, Yellow, Solid, 6"	GM	1.363
*	Painted Pavement Markings, Standard, Yellow, 2/4' Dotted Guideline, 6"	GM	0.019
*	Painted Pavement Markings, Standard, Yellow, 6'/10' Dotted Extension, 6"	GM	0.045
711-11-101	Thermoplastic, Standard, White, Solid, 6"	GM	2.174
711-11-103	Thermoplastic, Standard, White, Solid, 12"	LF	868
711-11-224	Thermoplastic, Standard, White, Solid, 18"	LF	97
711-11-105	Thermoplastic, Standard, White, Solid, 24"	LF	228
711-11-131	Thermoplastic, Standard, White, Skip, 10'/30', 6"	GM	1.455
711-11-141	Thermoplastic, Standard, White, 2/4' Dotted Guideline, 6"	GM	0.088
711-11-160	Thermoplastic, Standard, White, Message	EA	2
711-11-170	Thermoplastic, Standard, White, Arrows	EA	43
711-11-201	Thermoplastic, Standard, Yellow, Solid, 6"	GM	1.363
711-11-241	Thermoplastic, Standard, Yellow, 2/4' Dotted Guideline, 6"	GM	0.019
711-11-241	Thermoplastic, Standard, Yellow, 6'/10' Dotted Extension, 6"	GM	0.045

\*These quantities are paid for under Painted Pavement Markings (Final Surface), Lump Sum - Item No. 710-90. These quantities are for one application; see Specification 710 for the number of applications required.

**SIGNAL ITEMS**

ITEM NO	ITEM DESCRIPTION	UNIT	QUANTITY
630-2-11	Conduit, Install, Open Trench	LF	45
632-7-1	Signal Cable, Install	PI	1
635-2-30	Pull & Splice Box, Install	EA	3
635-2-32	Pull & Splice Box, Install, 24"x36"	EA	1
646-1-30	Aluminum Signals Pole, Install	EA	4
646-1-60	Aluminum Signals Pole, Ped Detector Post, Remove	EA	4
650-1-14	Traffic Signal, Install Aluminum, 3 Section, 1 Way	AS	1
650-1-60	Traffic Signal, Remove	AS	1
650-1-70	Traffic Signal, Relocate	AS	1
653-1-31	Pedestrian Signal, Install, LED Countdown, 1 Way	AS	3
653-1-32	Pedestrian Signal, Install, LED Countdown, 2 Way	AS	1
653-1-60	Pedestrian Signal, Remove	AS	2
665-1-30	Pedestrian Detector, Install	EA	3
662-1-32	Pedestrian Detector, Install, Audible	EA	1

NO.	DATE	BY	REVISIONS - DESCRIPTION

DESIGNED: LLC      PROJ: 6713  
 DRAWN: LLC      DATE: 3/18  
 CHECKED: RKP      SCALE: N/A  
 FILE: 150350201

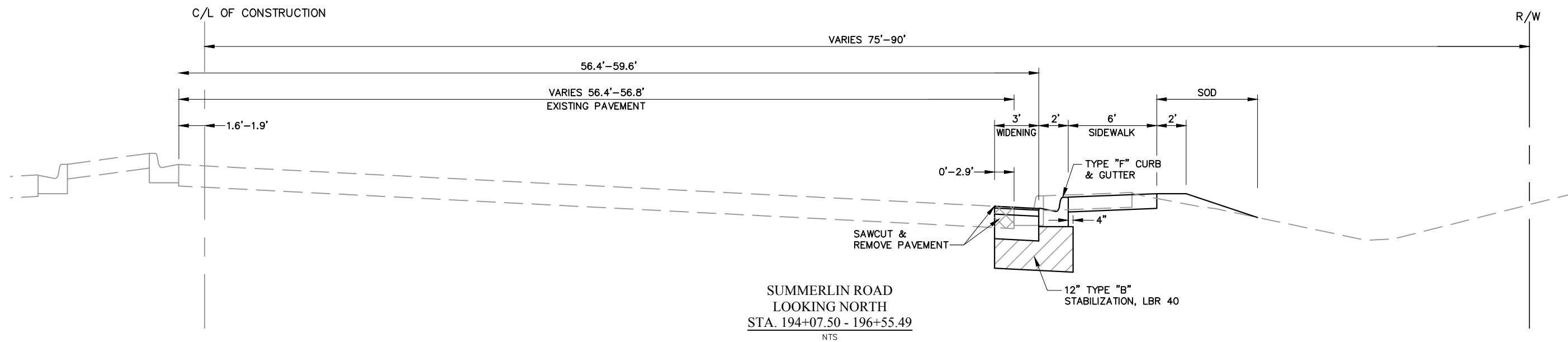
APPROVED BY:  
 PROFESSIONAL ENGINEER  
 FLORIDA PE NO. \_\_\_\_\_  
 DATE: \_\_\_\_\_



SUMMERLIN ROAD & CYPRESS LAKE DRIVE  
 INTERSECTION IMPROVEMENTS  
 SUMMARY OF PAY ITEMS

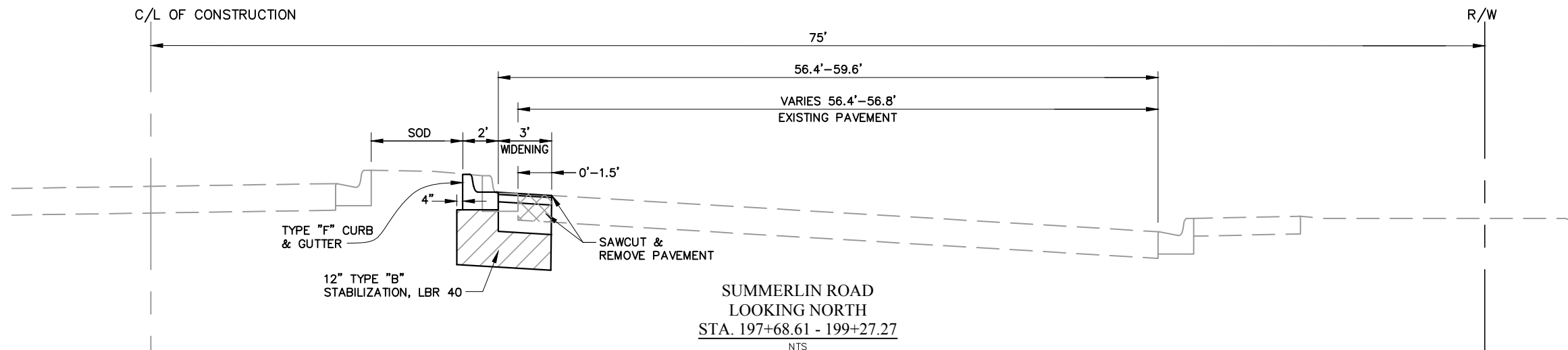
SHEET  
 2  
 of  
 15  
 SHEETS

L:\Design Projects\2015\150350401.dwg, 3/19/2018 8:44:02 AM



SUMMERLIN ROAD  
LOOKING NORTH  
STA. 194+07.50 - 196+55.49  
NTS

**PAVEMENT WIDENING**  
1" ASPHALTIC CONCRETE TYPE S-III  
2 1/2" ASPHALTIC CONCRETE TYPE S-I  
OPTIONAL BASE GROUP 9  
12" TYPE "B" STABILIZATION, LBR 40



SUMMERLIN ROAD  
LOOKING NORTH  
STA. 197+68.61 - 199+27.27  
NTS

**PAVEMENT WIDENING**  
1" ASPHALTIC CONCRETE TYPE S-III  
2 1/2" ASPHALTIC CONCRETE TYPE S-I  
OPTIONAL BASE GROUP 9  
12" TYPE "B" STABILIZATION, LBR 40

NO.	DATE	BY	REVISIONS - DESCRIPTION

DESIGNED: LLC      PROJ: 6713  
DRAWN: LLC      DATE: 3/18  
CHECKED: RKP      SCALE: NTS  
FILE: 150350401.DWG

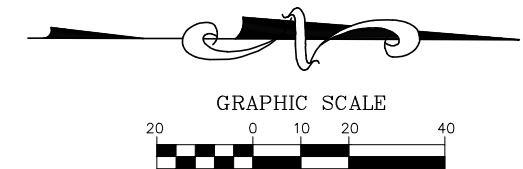
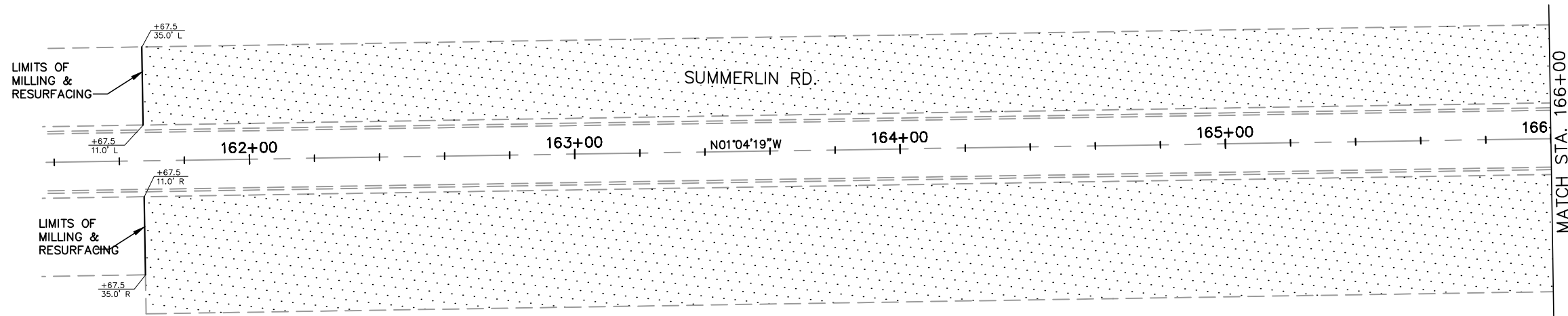
APPROVED BY:  
PROFESSIONAL ENGINEER  
FLORIDA PE NO. \_\_\_\_\_  
DATE: \_\_\_\_\_

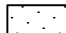


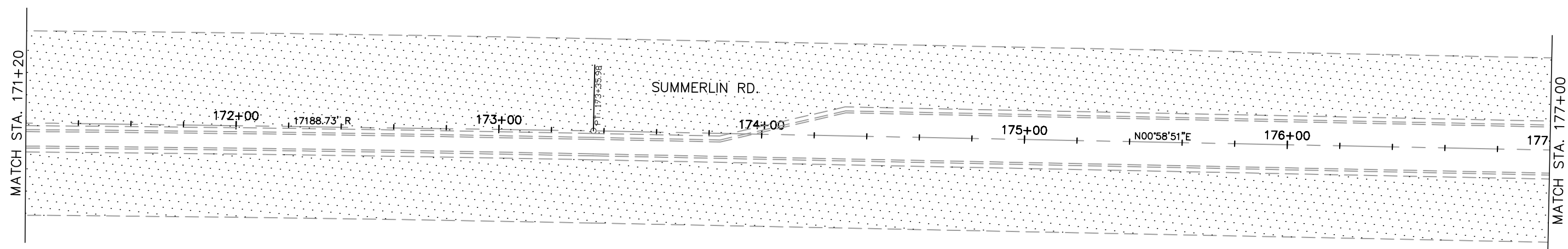
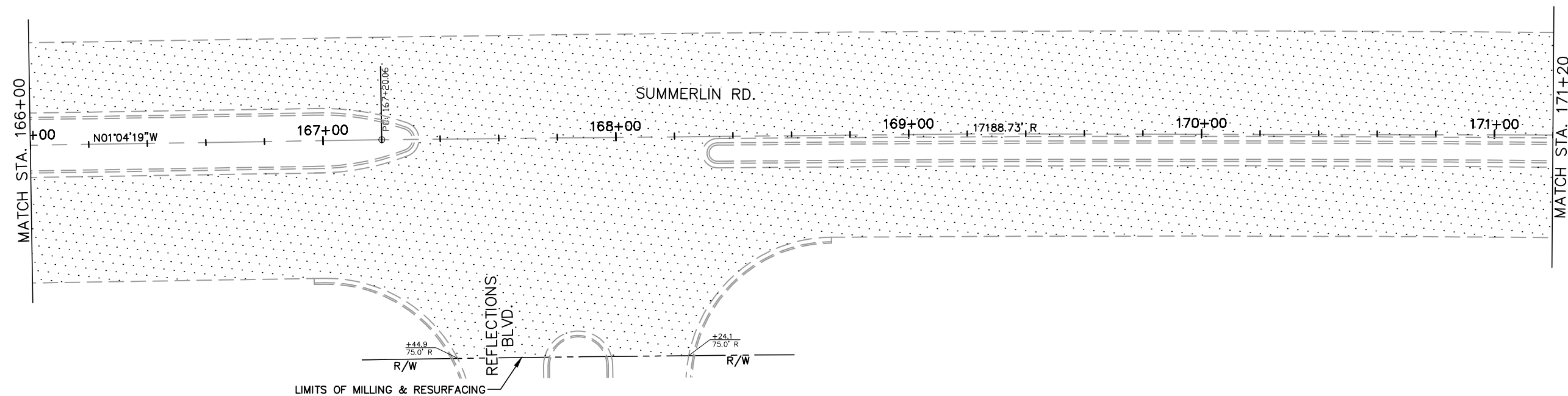
SUMMERLIN ROAD & CYPRESS LAKE DRIVE  
INTERSECTION IMPROVEMENTS  
TYPICAL SECTIONS

SHEET  
3  
of  
15  
SHEETS

L:\Design Projects\2015\150350806.dwg, 3/19/2018 8:52:32 AM



**LEGEND**  
 MILL & RESURFACE WITH  
 1" ASPHALTIC CONCRETE TYPE S-III



NO.	DATE	BY	REVISIONS - DESCRIPTION

DESIGNED: LLC    PROJ: 6713  
 DRAWN: LLC    DATE: 3/18  
 CHECKED:    SCALE: 1"=40'  
 FILE: 150350806

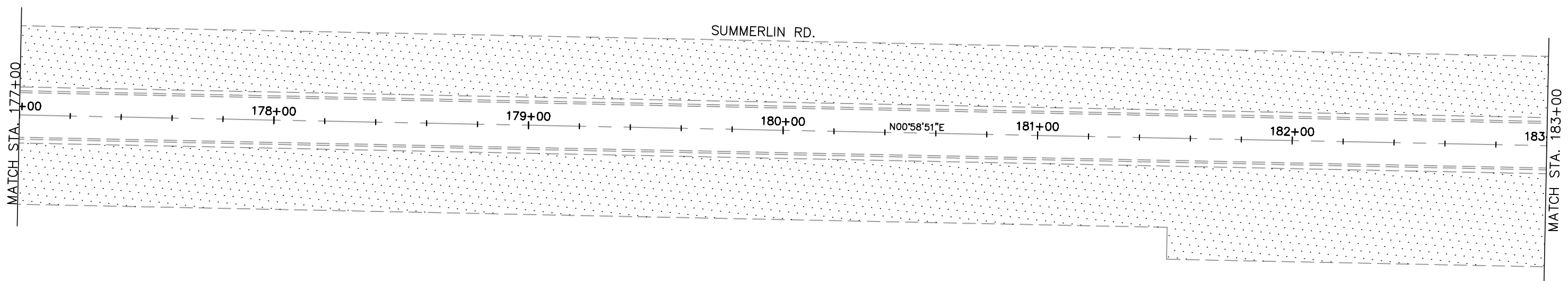
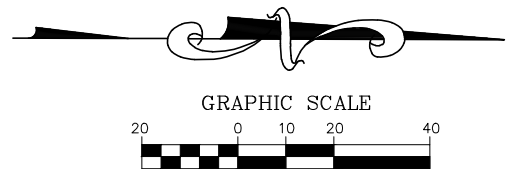
APPROVED BY: \_\_\_\_\_  
 PROFESSIONAL ENGINEER  
 FLORIDA PE NO. \_\_\_\_\_  
 DATE: \_\_\_\_\_



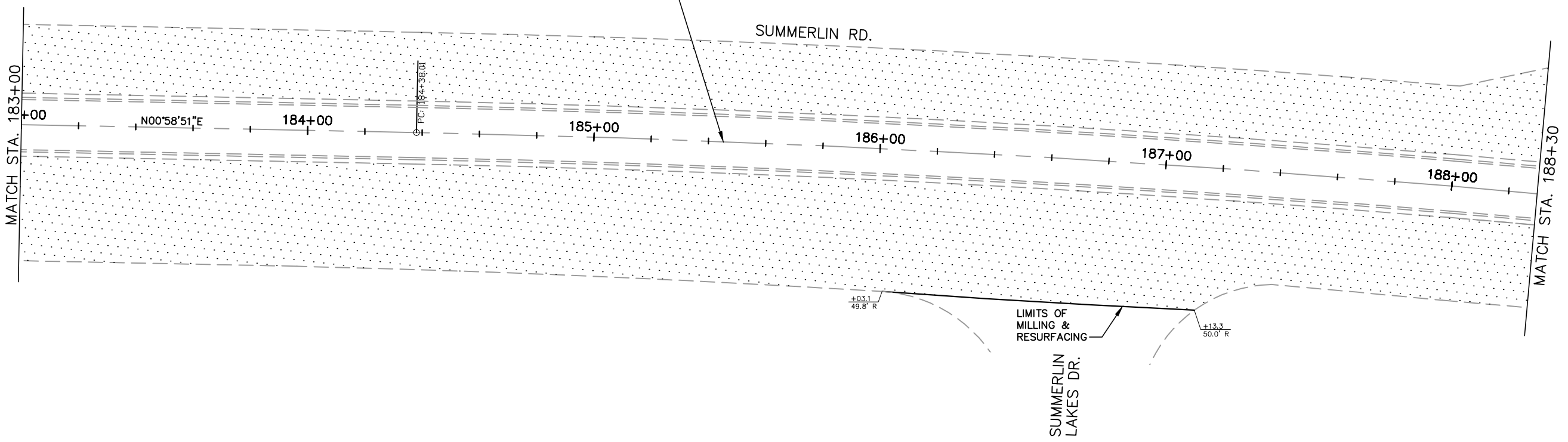
**Department of Transportation**  
**Lee County**  
 Southwest Florida  
 1500 MONROE STREET FORT MYERS, FL 33901  
 239-533-8900 www.lee.gov/dot

**SUMMERLIN ROAD & CYPRESS LAKE DRIVE**  
**INTERSECTION IMPROVEMENTS**  
 MILLING & RESURFACING LIMITS

SHEET  
 4  
 of  
 15  
 SHEETS



C/L OF R/W & CONST. LINE  
 R=5729.58'  
 L=1200.00'  
 D=11°59'59.98"  
 CHORD BEARING=N10°35'55"E  
 CHORD=1197.81'



+03.1  
49.8' R

LIMITS OF MILLING & RESURFACING

+13.3  
50.0' R

SUMMERLIN LAKES DR.

L:\Design Projects\2015\150350807.dwg, 3/19/2018 8:55:21 AM

NO.	DATE	BY	REVISIONS - DESCRIPTION

DESIGNED: LLC      PROJ: 6713  
 DRAWN: LLC        DATE: 3/18  
 CHECKED:         SCALE: 1"=40'  
 FILE: 150350807

APPROVED BY:  
 PROFESSIONAL ENGINEER  
 FLORIDA PE NO. \_\_\_\_\_  
 DATE: \_\_\_\_\_

**Department of Transportation**  
**Lee County**  
*Southwest Florida*  
 1500 MONROE STREET FORT MYERS, FL 33901  
 239-533-8900 www.lee.gov/dot

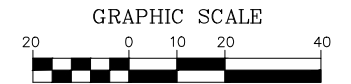
SUMMERLIN ROAD & CYPRESS LAKE DRIVE  
 INTERSECTION IMPROVEMENTS

---

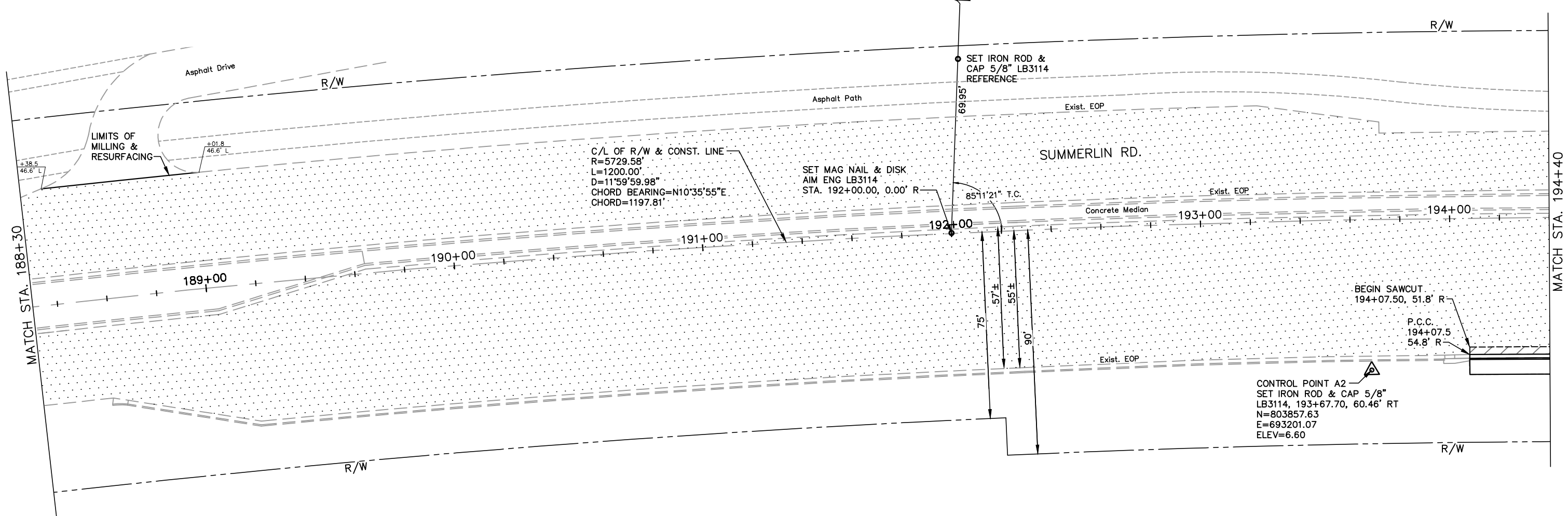
MILLING & RESURFACING LIMITS

SHEET  
 5  
 of  
 15  
 SHEETS

L:\Design Projects\2015\15035\150350803.dwg, 3/19/2018 8:48:37 AM



- LEGEND**
- MILL & RESURFACE WITH  
1" ASPHALTIC CONCRETE TYPE S-III
  - PROPOSED PAVEMENT  
1" ASPHALTIC CONCRETE TYPE S-III  
2 1/2" ASPHALTIC CONCRETE TYPE S-I  
OPTIONAL BASE GROUP 9  
12" TYPE "B" STABILIZATION, LBR 40



NO.	DATE	BY	REVISIONS - DESCRIPTION

DESIGNED: LLC      PROJ: 6713  
 DRAWN: LLC      DATE: 3/18  
 CHECKED: RKP      SCALE: 1"=40'  
 FILE: 150350803

APPROVED BY: \_\_\_\_\_  
 PROFESSIONAL ENGINEER  
 FLORIDA PE NO. \_\_\_\_\_  
 DATE: \_\_\_\_\_

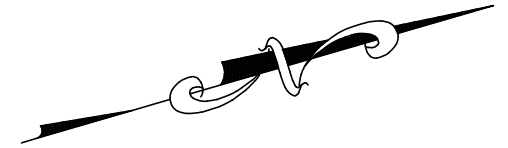
**Department of Transportation**  
**Lee County**  
 Southwest Florida  
 1500 MONROE STREET FORT MYERS, FL 33901  
 239-533-8900 www.lee.gov/dot

**SUMMERLIN ROAD & CYPRESS LAKE DRIVE**  
**INTERSECTION IMPROVEMENTS**  


---

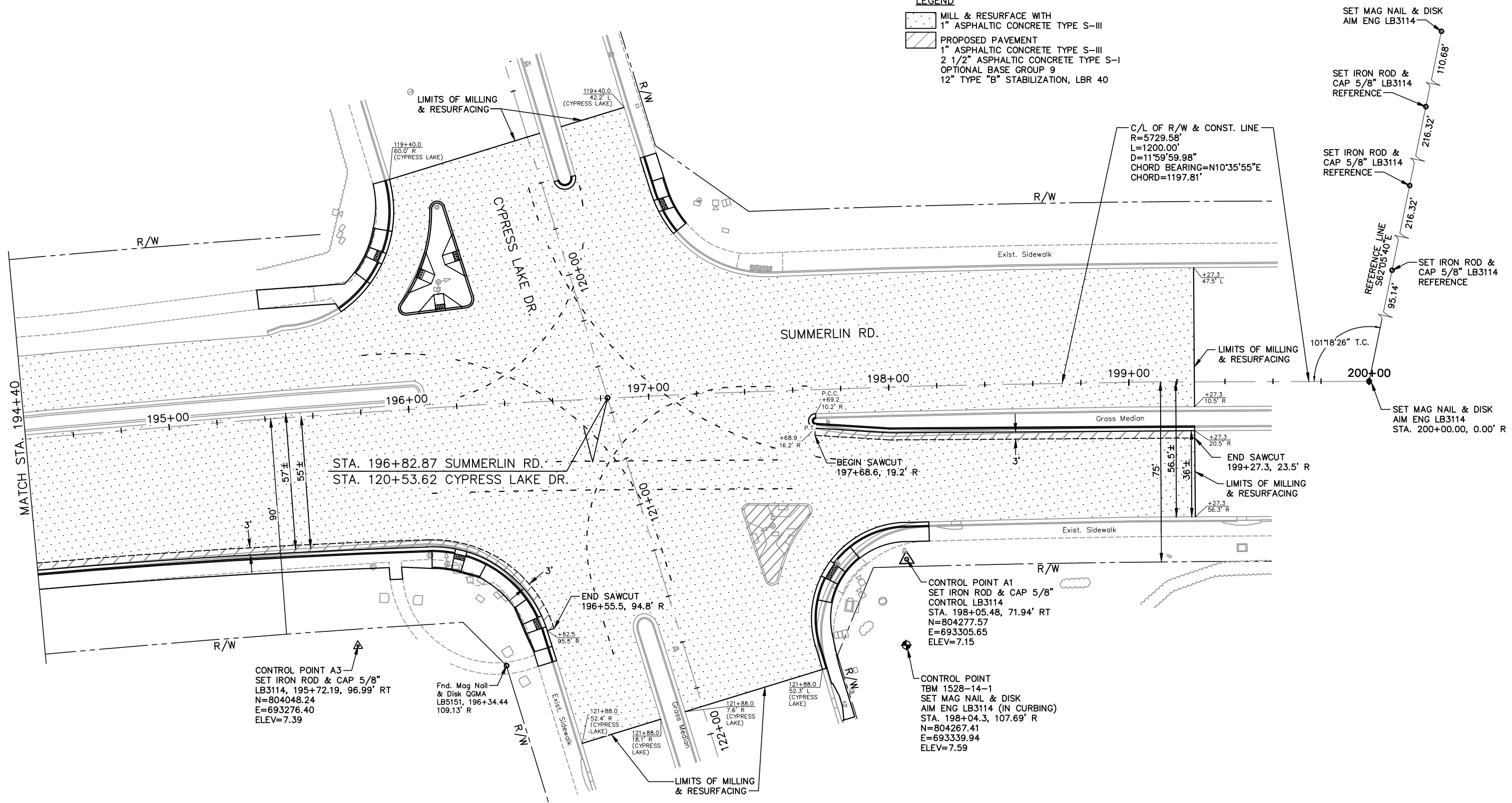
**MILLING & RESURFACING LIMITS**

L:\Design Projects\2015\15035\150350804.dwg, 3/19/2018 8:43:14 AM



**LEGEND**

- MILL & RESURFACE WITH  
1" ASPHALTIC CONCRETE TYPE S-III
- PROPOSED PAVEMENT  
1" ASPHALTIC CONCRETE TYPE S-III  
2 1/2" ASPHALTIC CONCRETE TYPE S-I  
OPTIONAL BASE GROUP 9  
12" TYPE "B" STABILIZATION, LBR 40



NO.	DATE	BY	REVISIONS - DESCRIPTION

DESIGNED: LLC      PROJ: 6713  
 DRAWN: LLC        DATE: 3/18  
 CHECKED: RKP     SCALE: 1"=40'  
 FILE: 150350804

APPROVED BY: \_\_\_\_\_  
 PROFESSIONAL ENGINEER  
 FLORIDA PE NO. \_\_\_\_\_  
 DATE: \_\_\_\_\_

**Department of Transportation**  
**Lee County**  
 Southwest Florida

1500 MONROE STREET FORT MYERS, FL 33901  
 239-533-8900 www.lee.gov/dot

**SUMMERLIN ROAD & CYPRESS LAKE DRIVE**  
**INTERSECTION IMPROVEMENTS**

---

MILLING & RESURFACING LIMITS

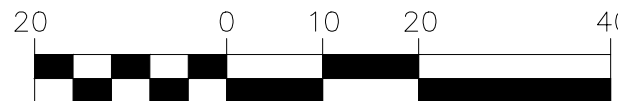
SHEET  
**7**  
 of  
**15**  
 SHEETS

L:\Design Projects\2015\150350801.dwg, 3/19/2018 8:46:35 AM

**LEGEND**

- PROPOSED PAVEMENT
- 1" ASPHALTIC CONCRETE TYPE S-III
- 2 1/2" ASPHALTIC CONCRETE TYPE S-I
- OPTIONAL BASE GROUP 9
- 12" TYPE "B" STABILIZATION, LBR 40

**GRAPHIC SCALE**

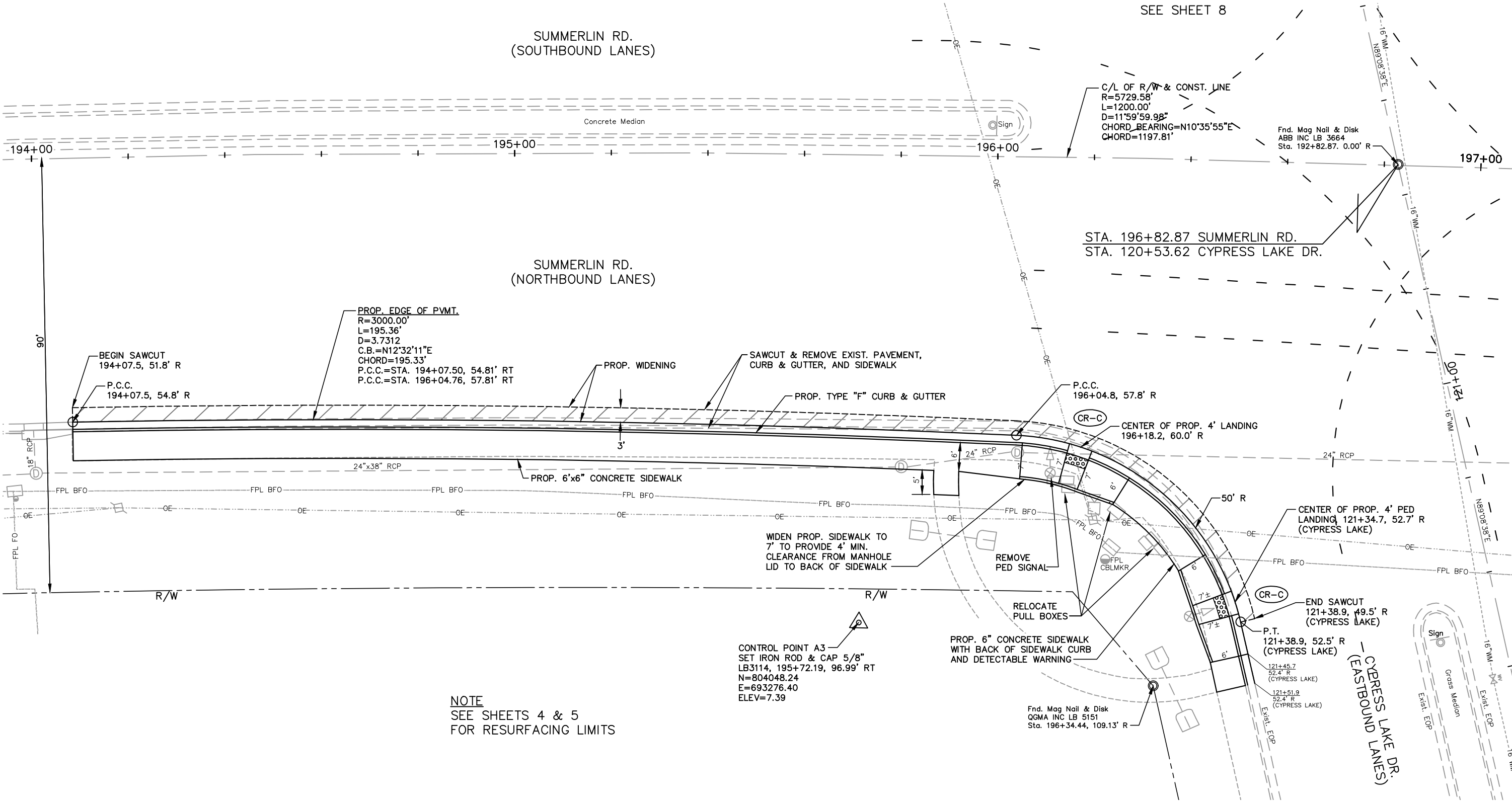


SEE SHEET 8

SUMMERLIN RD.  
(SOUTHBOUND LANES)

SUMMERLIN RD.  
(NORTHBOUND LANES)

Concrete Median



**NOTE**  
SEE SHEETS 4 & 5  
FOR RESURFACING LIMITS

CONTROL POINT A3  
SET IRON ROD & CAP 5/8"  
LB3114, 195+72.19, 96.99' RT  
N=804048.24  
E=693276.40  
ELEV=7.39

Fnd. Mag Nail & Disk  
QGMA INC LB 5151  
Sta. 196+34.44, 109.13' R

NO.	DATE	BY	REVISIONS - DESCRIPTION

DESIGNED:	PROJ: 6713
DRAWN: LLC	DATE: 3/18
CHECKED: RKP	SCALE: 1"=20'
FILE: 150350801	

APPROVED BY:	
PROFESSIONAL ENGINEER	
FLORIDA PE NO.	
DATE:	

1500 MONROE STREET FORT MYERS, FL 33901  
239-533-8900 www.leegov.com/dot

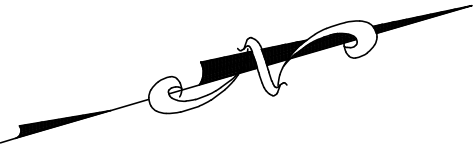
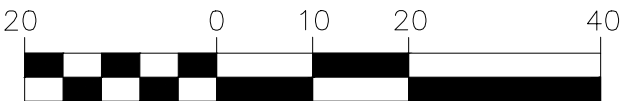
**SUMMERLIN ROAD & CYPRESS LAKE DRIVE  
INTERSECTION IMPROVEMENTS**

---

CONSTRUCTION PLAN - SOUTHEAST CORNER



GRAPHIC SCALE



LEGEND

- PROPOSED PAVEMENT
- 1" ASPHALTIC CONCRETE TYPE S-III
- 2 1/2" ASPHALTIC CONCRETE TYPE S-I
- OPTIONAL BASE GROUP 9
- 12" TYPE "B" STABILIZATION, LBR 40

SEE SHEET 8

SEE SHEET 6

SUMMERLIN RD.  
(SOUTHBOUND LANES)

SUMMERLIN RD.  
(NORTHBOUND LANES)

C/L OF R/W & CONST. LINE  
R=5729.58'  
L=1200.00'  
D=11°59'59.98"  
CHORD BEARING=N10°35'55"E  
CHORD=1197.81'

Fnd. Mag Nail  
& Disk ABB INC LB 3664  
Sta. 192+82.87, 0.00' R

STA. 196+82.87 SUMMERLIN RD.  
STA. 120+53.62 CYPRESS LAKE DR.

REMOVE EXIST. CONCRETE  
ISLAND & REPLACE WITH  
FULL DEPTH PAVEMENT

REMOVE PED SIGNAL

SAWCUT & REMOVE EXIST. PAVEMENT  
TO CREATE A 40' RADIUS - REMOVE  
EXIST. SIDEWALK AND CURB & GUTTER

PROP. TYPE "F" CURB & GUTTER

P.C.  
121+77.9, 52.3' L  
(CYPRESS LAKE)

121+88.0  
52.3' L  
(CYPRESS LAKE)

MATCH EXIST.  
CURB & GUTTER

REMOVE & REPLACE  
SIDEWALK ONLY

CYPRESS LAKE DR.  
(WESTBOUND LANES)

CYPRESS LAKE DR.  
(EASTBOUND LANES)

P.C.C.  
197+69.2, 10.21' R

198+00

199+00

3' R

P.T.  
197+68.9  
16.21' R

BEGIN SAWCUT  
197+68.6, 19.2' R

RELOCATE SIGN

PROP. EDGE OF PVMT.  
N19°47'04"E - 31.14'

SAWCUT & REMOVE EXIST.  
PAVEMENT AND CURB & GUTTER

PROP. TYPE "F" CURB & GUTTER

P.I.  
198+00.0, 19.1' R

PROP. EDGE OF PVMT.  
N15°52'17"E - 126.84'

PROP. WIDENING

PROP. TYPE "F" CURB & GUTTER

P.C.  
199+27.3, 20.5' R

END SAWCUT  
199+27.3, 23.5' R

PROP. 6'x6" CONCRETE SIDEWALK  
ADD BACK OF SIDEWALK CURB  
AND DETECTABLE WARNING

CENTER OF PROP. 6'  
LANDING, 197+71.2,  
74.7' R

ADJUST  
SEWER VALVE

P.T.  
198+05.2, 56.6' R

MATCH EXIST. CURB & SIDEWALK

+15.2  
56.6' R

CONTROL POINT A1  
SET IRON ROD & CAP 5/8"  
CONTROL LB3114  
STA. 198+05.48, 71.94' RT  
N=804277.57  
E=693305.65  
ELEV=7.15

CONTROL POINT  
TBM 1528-14-1  
SET MAG NAIL & DISK  
AIM ENG LB3114 (IN CURBING)  
STA. 198+04.3, 107.69' R  
N=804267.41  
E=693339.94  
ELEV=7.59

NOTE  
SEE SHEETS 4 & 5  
FOR RESURFACING LIMITS

NOTE  
ALL STATIONS & OFFSETS ARE FROM  
THE C/L OF R/W OF SUMMERLIN RD.  
UNLESS OTHERWISE NOTED.

CONTROL POINTS NOT SHOWN ON PLAN

- |   |  |
|---|--|
| BM 17-1<br>SET CONCRETE MONUMENT<br>4"x4" W/ALUMINUM DISK<br>STAMPED BM 17-1<br>N=804279.55<br>E=693869.87<br>ELEV=7.48 | BM 1<br>FOUND CONCRETE MONUMENT<br>4"x4" AIM ENG LB3114<br>N=804256.48<br>E=692895.69<br>ELEV=5.60 |
|---|--|

**CAUTION!!**  
4" GAS LINE IN AREA  
CONTACT MARILYN ALOI AT  
TECO PEOPLES GAS BEFORE  
DIGGING NEAR GAS LINE.  
239-690-5517, OFFICE  
239-896-0812, CELL  
mdaloi@tecoenergy.com

L:\Design Projects\2015\150350802.dwg, 3/19/2018 8:47:38 AM

NO.	DATE	BY	REVISIONS - DESCRIPTION

DESIGNED: LLC      PROJ: 6713  
DRAWN: LLC      DATE: 2/18  
CHECKED: RKP      SCALE: 1"=20'  
FILE: 150350802

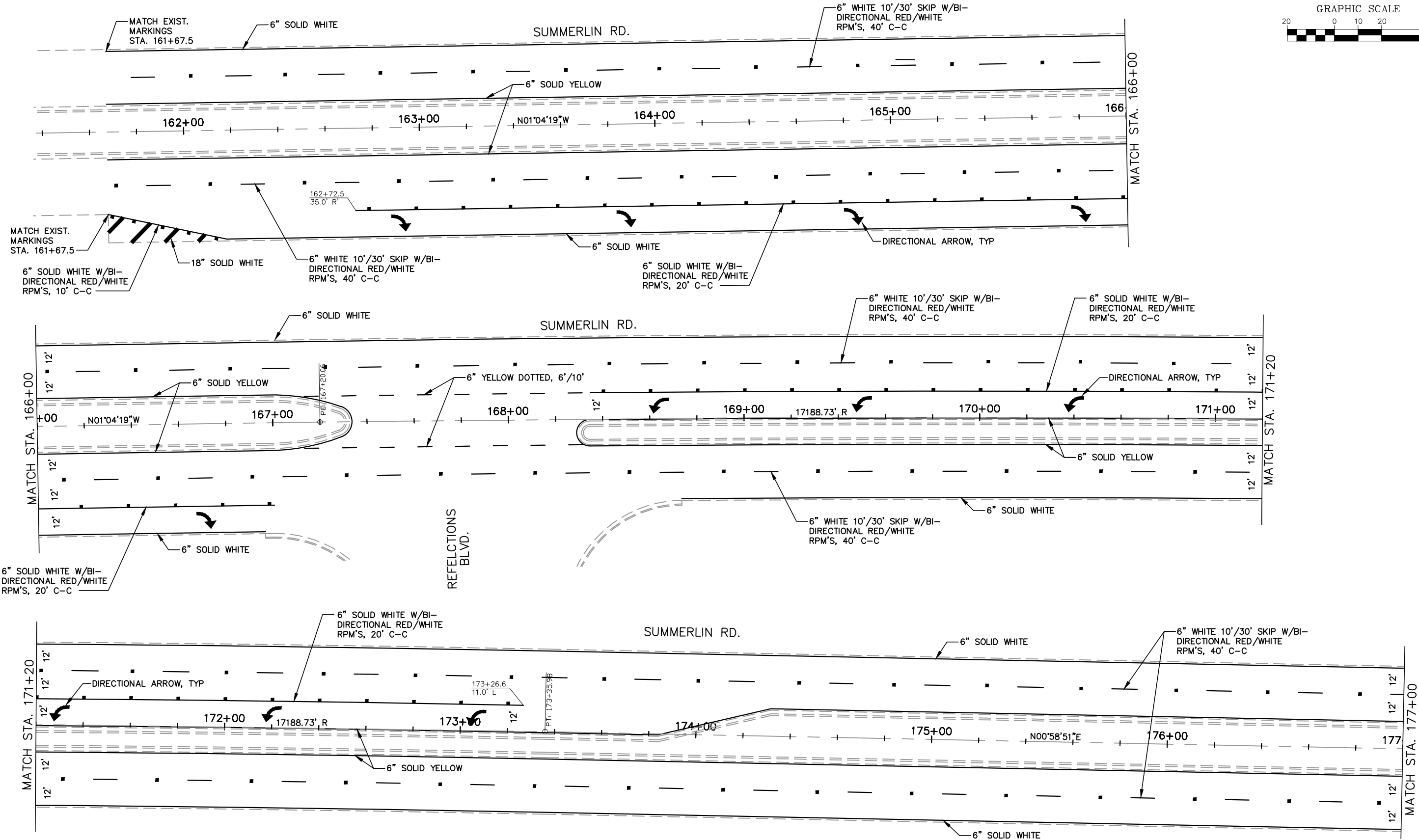
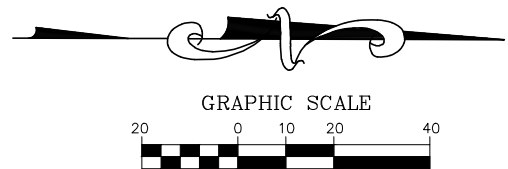
APPROVED BY:  
PROFESSIONAL ENGINEER  
FLORIDA PE NO. \_\_\_\_\_  
DATE: \_\_\_\_\_

1500 MONROE STREET FORT MYERS, FL 33901  
239-533-8900 www.leegov.com/dot

SUMMERLIN ROAD & CYPRESS LAKE DRIVE  
INTERSECTION IMPROVEMENTS  
CONSTRUCTION PLAN - NORTHEAST CORNER

SHEET  
9  
of  
15  
SHEETS





L:\Design Projects\2015\150352103.dwg, 3/19/2018 8:59:16 AM

NO.	DATE	BY	REVISIONS - DESCRIPTION

DESIGNED: LLC      PROJ: 6713  
 DRAWN: LLC      DATE: 3/18  
 CHECKED:      SCALE: 1"=40'  
 FILE: 150352103

APPROVED BY: \_\_\_\_\_  
 PROFESSIONAL ENGINEER  
 FLORIDA PE NO. \_\_\_\_\_  
 DATE: \_\_\_\_\_

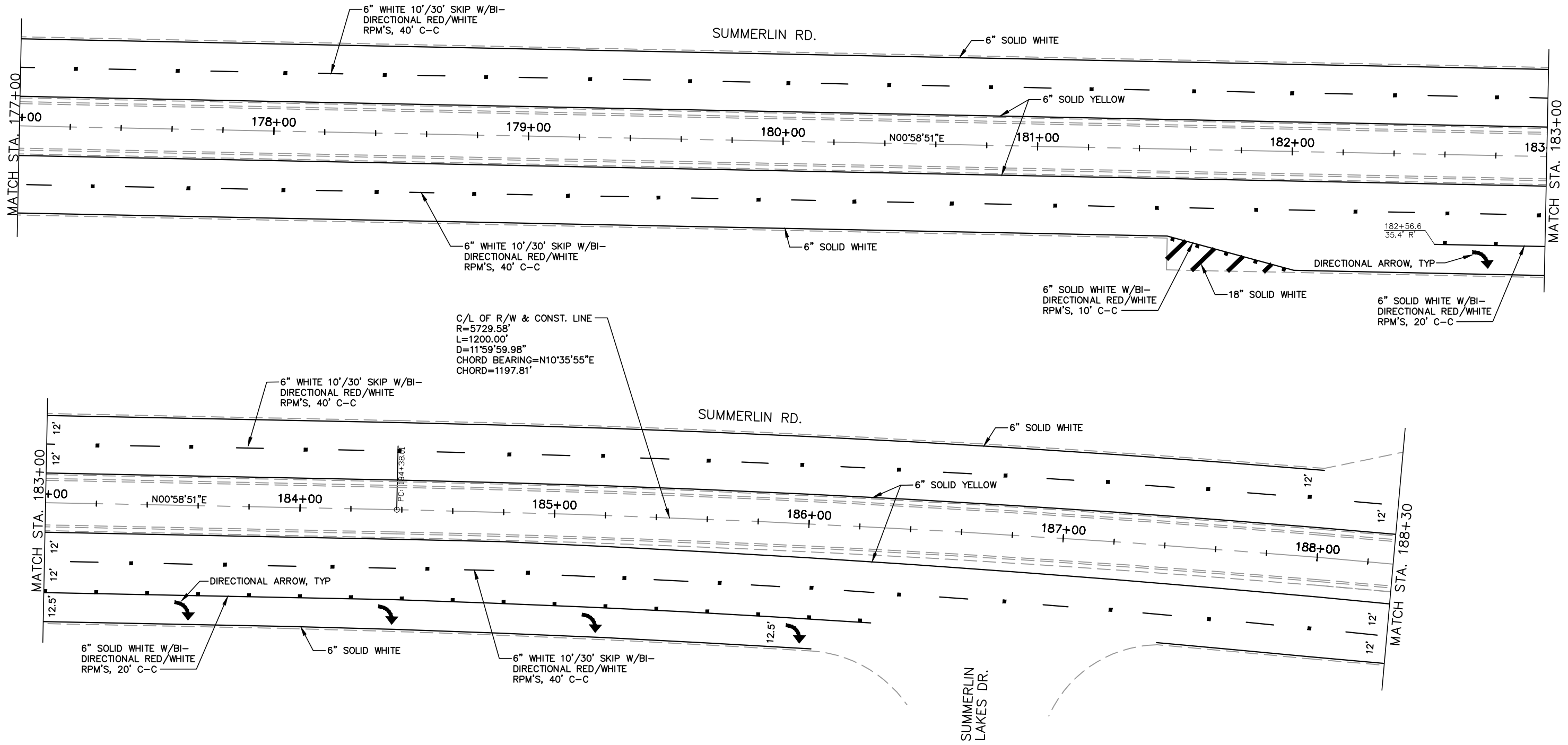
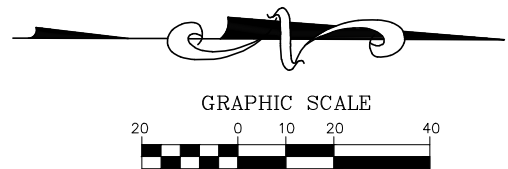


**SUMMERLIN ROAD & CYPRESS LAKE DRIVE  
 INTERSECTION IMPROVEMENTS**

---

SIGNING & MARKING PLAN

SHEET  
 11  
 of  
 15  
 SHEETS



L:\Design Projects\2015\150352104.dwg, 3/19/2018 9:00:28 AM

NO.	DATE	BY	REVISIONS - DESCRIPTION

DESIGNED: LLC      PROJ: 6713  
 DRAWN: LLC      DATE: 3/18  
 CHECKED:      SCALE: 1"=40'  
 FILE: 150352104

APPROVED BY: \_\_\_\_\_  
 PROFESSIONAL ENGINEER  
 FLORIDA PE NO. \_\_\_\_\_  
 DATE: \_\_\_\_\_

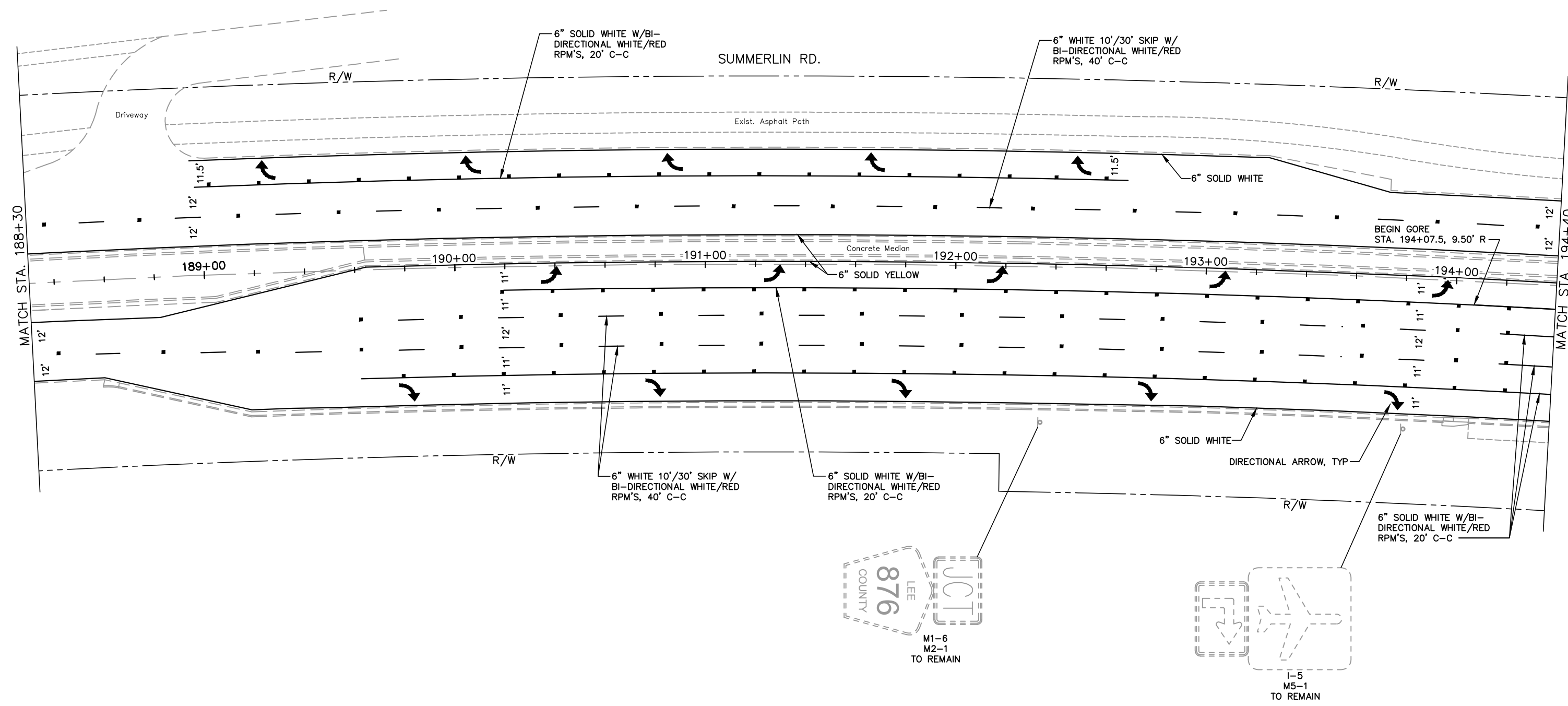
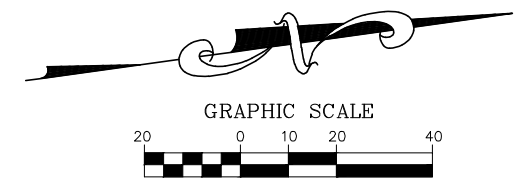
**Department of Transportation**  
**Lee County**  
 Southwest Florida  
 1500 MONROE STREET FORT MYERS, FL 33901  
 239-533-8900 www.lee.gov/dot

**SUMMERLIN ROAD & CYPRESS LAKE DRIVE**  
**INTERSECTION IMPROVEMENTS**

---

SIGNING & MARKING PLAN

SHEET  
 12  
 of  
 15  
 SHEETS



L:\Design Projects\2015\150352101.dwg, 3/19/2018 8:56:43 AM

NO.	DATE	BY	REVISIONS - DESCRIPTION

DESIGNED: LLC      PROJ: 6713  
 DRAWN: LLC      DATE: 3/18  
 CHECKED: RKP      SCALE: 1"=40'  
 FILE: 150352101

APPROVED BY: \_\_\_\_\_  
 PROFESSIONAL ENGINEER  
 FLORIDA PE NO. \_\_\_\_\_  
 DATE: \_\_\_\_\_

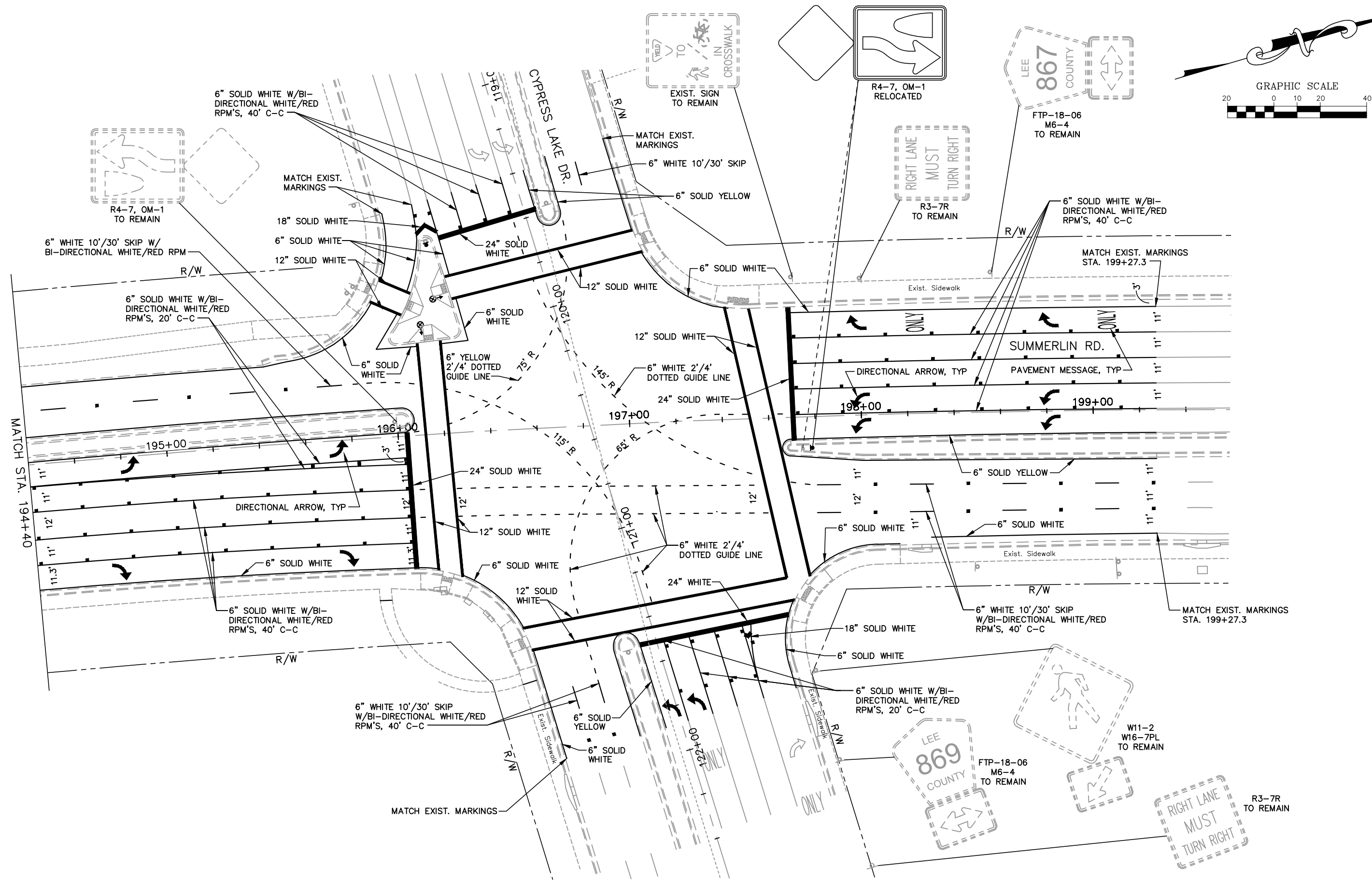
Department of Transportation  
**Lee County**  
 Southwest Florida  
 1500 MONROE STREET FORT MYERS, FL 33901  
 239-533-8900 www.leegov.com/dot

**SUMMERLIN ROAD & CYPRESS LAKE DRIVE  
 INTERSECTION IMPROVEMENTS**

---

SIGNING & MARKING PLAN

L:\Design Projects\2015\150352102.dwg, 3/19/2018 8:58:04 AM



NO.	DATE	BY	REVISIONS - DESCRIPTION

DESIGNED: LLC      PROJ: 6713  
 DRAWN: LLC      DATE: 3/18  
 CHECKED: RKP      SCALE: 1"=40'  
 FILE: 150352102

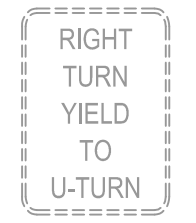
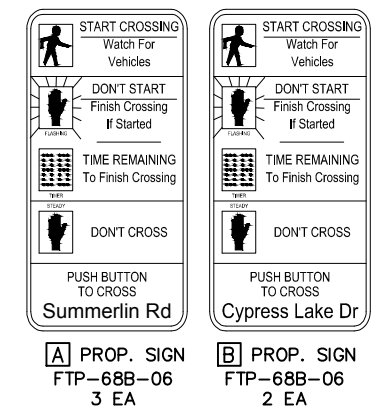
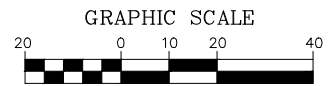
APPROVED BY: \_\_\_\_\_  
 PROFESSIONAL ENGINEER  
 FLORIDA PE NO. \_\_\_\_\_  
 DATE: \_\_\_\_\_


**Department of Transportation**  
**Lee County**  
*Southwest Florida*  
 1500 MONROE STREET FORT MYERS, FL 33901  
 239-533-8900 www.lee.gov/dot

**SUMMERLIN ROAD & CYPRESS LAKE DRIVE**  
**INTERSECTION IMPROVEMENTS**  

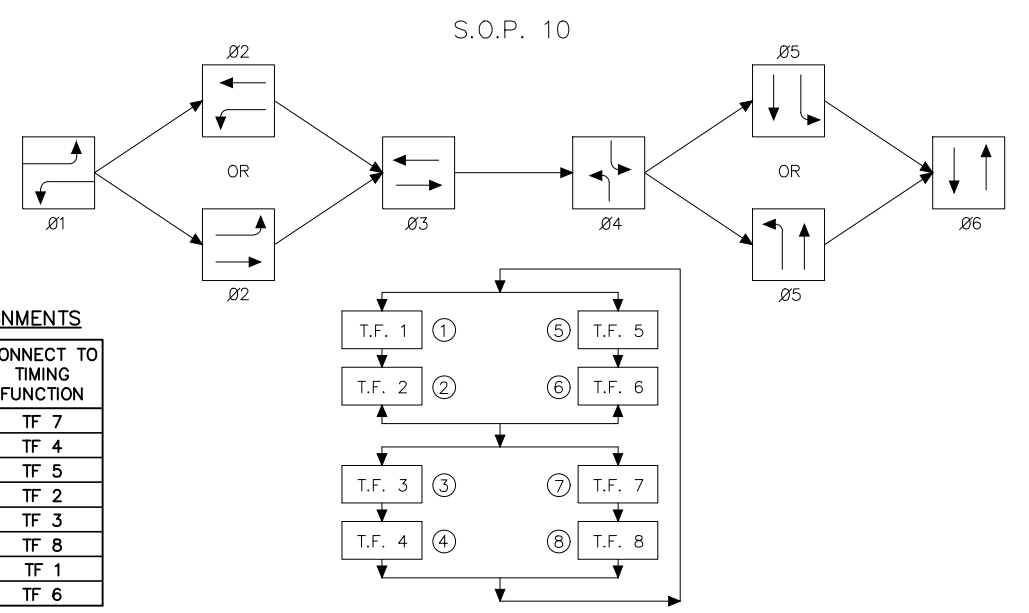
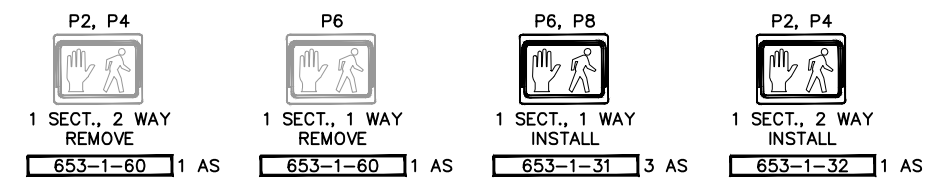
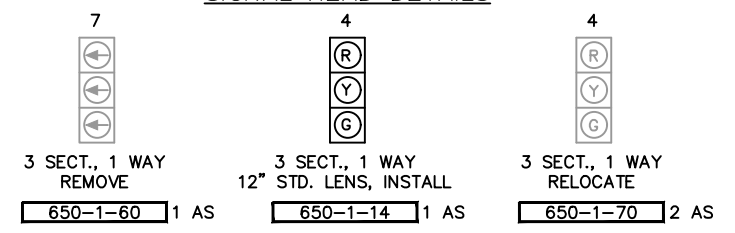

---

**SIGNING & MARKING PLAN**



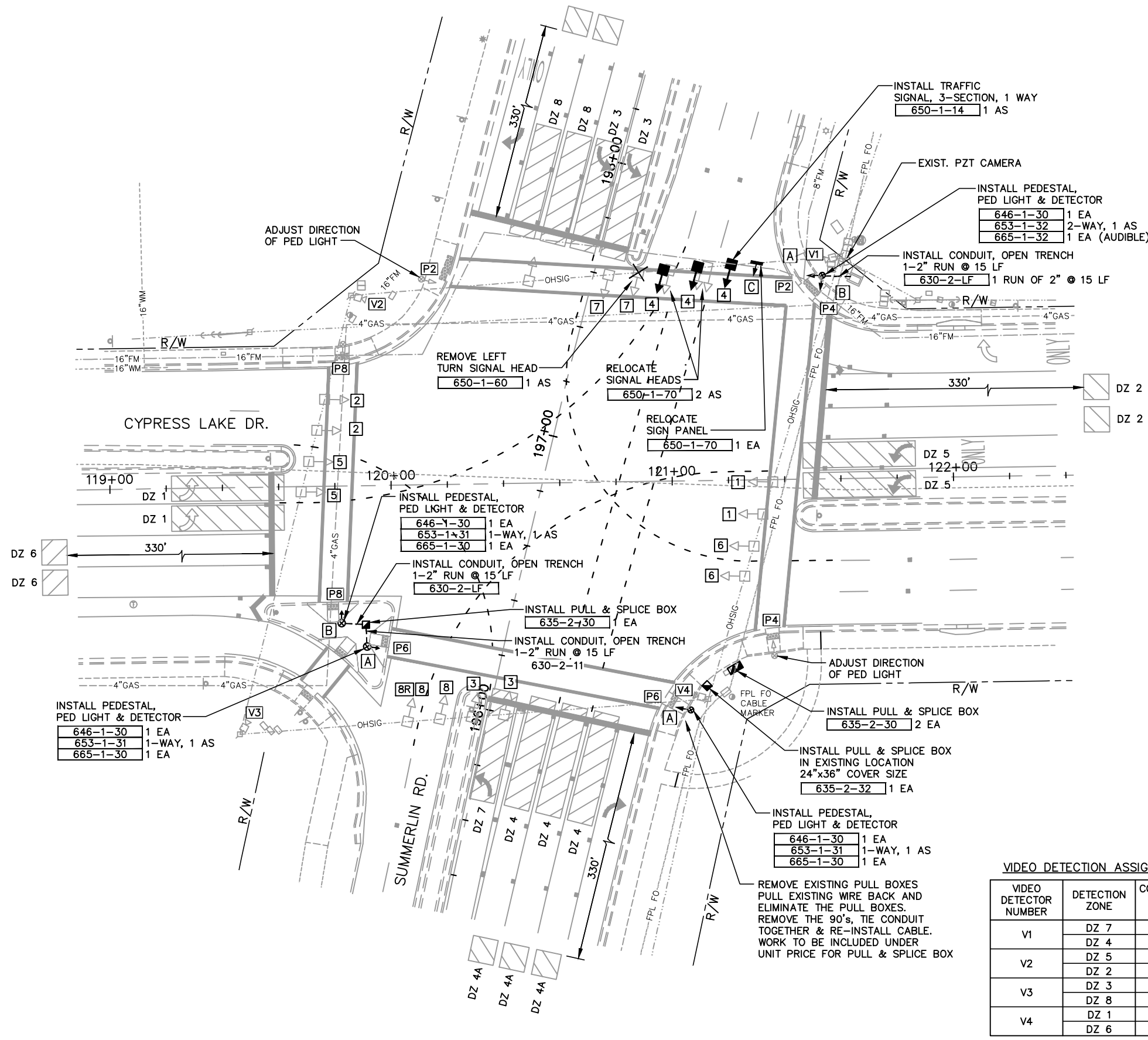
**A** PROP. SIGN FTP-68B-06 3 EA  
**B** PROP. SIGN FTP-68B-06 2 EA  
**C** EXIST. SIGN OVERHEAD, RELOCATE 1 EA

**SIGNAL HEAD DETAILS**



**VIDEO DETECTION ASSIGNMENTS**

VIDEO DETECTOR NUMBER	DETECTION ZONE	CONNECT TO TIMING FUNCTION
V1	DZ 7	TF 7
	DZ 4	TF 4
V2	DZ 5	TF 5
	DZ 2	TF 2
V3	DZ 3	TF 3
	DZ 8	TF 8
V4	DZ 1	TF 1
	DZ 6	TF 6



L:\Design Projects\2015\150352201.dwg, 3/19/2018 9:04:31 AM

NO.	DATE	BY	REVISIONS - DESCRIPTION

DESIGNED: LLC PROJ: 6713  
 DRAWN: LLC DATE: 3/18  
 CHECKED: RKP SCALE: 1"=40'  
 FILE: 150352201

APPROVED BY:  
 PROFESSIONAL ENGINEER  
 FLORIDA PE NO. \_\_\_\_\_  
 DATE: \_\_\_\_\_

1500 MONROE STREET FORT MYERS, FL 33901  
 239-533-8900 www.lee.gov/dot

**SUMMERLIN ROAD & CYPRESS LAKE DRIVE INTERSECTION IMPROVEMENTS**

**SIGNAL MODIFICATION PLAN**

SHEET 15 of 15 SHEETS