



UTILITIES PROVIDING SERVICE:

WATER AND SEWER:

LEE COUNTY UTILITIES
1500 MONROE ST
FORT MYERS, FLORIDA 33901
PHONE: (239) 533-8181

WATER AND SEWER:

CITY OF FORT MYERS UTILITIES
2925 DR. MARTIN LUTHER KING, JR. BOULEVARD
FORT MYERS, FLORIDA 33916
PHONE: (239) 321-8100

TELEPHONE:

CENTURYLINK
1520 LEE STREET
FORT MYERS, FLORIDA 33901
PHONE: (239) 336-2030

CABLE:

CENTURYLINK
1520 LEE STREET
FORT MYERS, FLORIDA 33901
PHONE: (239) 336-2030

ELECTRIC:

FLORIDA POWER & LIGHT COMPANY
15834 WINKLER ROAD
FORT MYERS, FLORIDA 33908
PHONE: (239) 415-1326

GARBAGE COLLECTION:

WASTE PRO
13110 RICKENBACKER PARKWAY
FORT MYERS, FLORIDA 33913
PHONE: (239) 337-0800
FAX: (239) 225-2758

FIRE CONTROL DISTRICT:

TICE FIRE DISTRICT
93511 WORKMEN WAY
FORT MYERS, FLORIDA 33905
PHONE: (239) 694-2380

GAS:

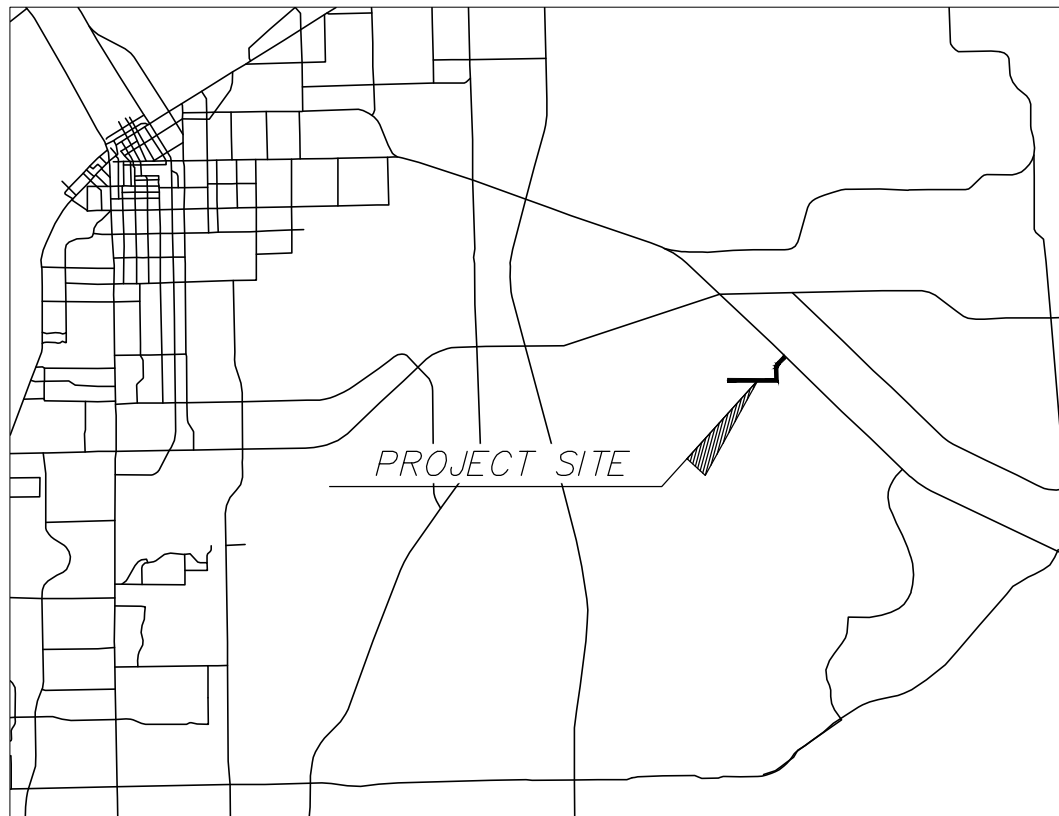
TECO PEOPLES GAS
5901 ENTERPRISE PKWY
FORT MYERS, FLORIDA 33905
PHONE: (877) 832-6747

Sheet List Table

Sheet Title	Sheet Number
Cover	01
Notes & Legends	02
Key Map	03
Plan & Profile	
Sta 0+00 to 5+00	04
Sta 5+00 to 10+00	05
Sta 10+00 to 15+00	06
Sta 14+00 to 19+50	07
Sta 19+50 to 25+00	08
Sta 25+00 to 30+50	09
Sta 30+50 to 36+00	10
Sta 36+00 to 41+50	11
Utility Details	
1 of 3 (General)	D-01
2 of 3 (Water)	D-02
3 of 3 (Sewer)	D-03

CONSTRUCTION PLANS
UTILITY MAIN IMPROVEMENTS
ALONG ACCESS DRIVE TO
MATERIAL RECOVERY FACILITY

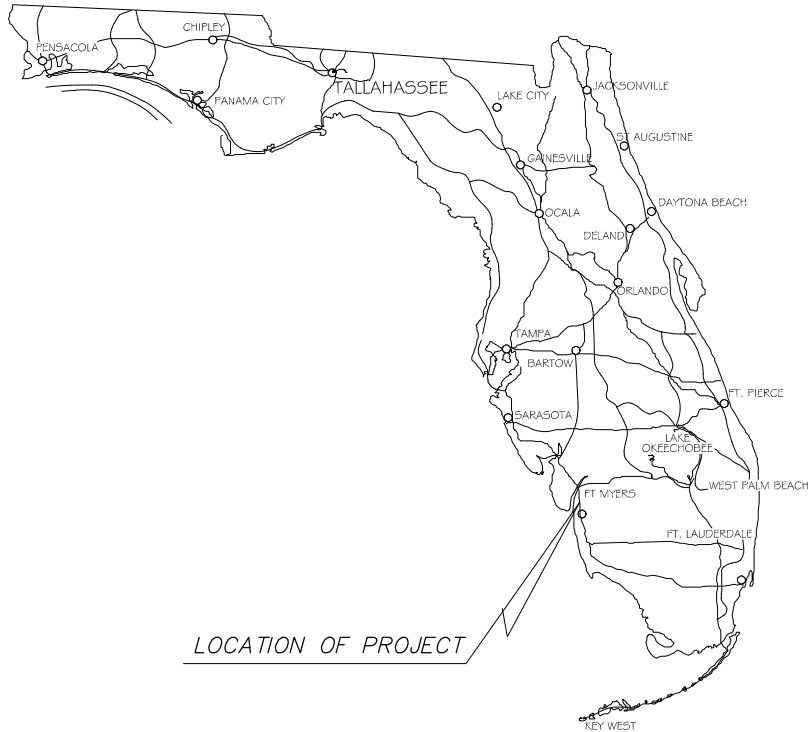
FOR
LEE COUNTY UTILITIES
LOCATED IN
SECTION 36; TOWNSHIP 44 SOUTH; RANGE 25 EAST
LEE COUNTY, FLORIDA
MARCH 31, 2025



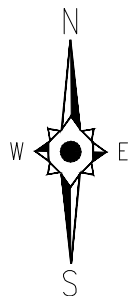
LOCATION MAP

N.T.S.

For Information Regarding
This Project, Contact:
DAVID BRICE TROUTEAUD, PE



LOCATION OF PROJECT



DESIGN CONSULTANT

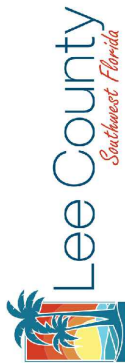


2122 JOHNSON STREET
P.O. BOX 1550
FORT MYERS, FLORIDA 33902-1550
PHONE (239) 334-0046
E.B. #642 & L.B. #642

JOHNSON
ENGINEERING

An Apex Company

JOHNSON ENGINEERING, LLC.
2122 JOHNSON STREET
FORT MYERS, FLORIDA 33902-1550
PHONE: (239) 334-0046
E.B. #642 & L.B. #642



Utility Main Improvements
Along Access Drive to
Material Recovery Facility
Lee County, Florida

REVISIONS

NO.	DESCRIPTION	DATE

DATE: MARCH 31, 2025
PROJECT NO. 20236121-000
FILE NO. 36-44-25
SCALE: AS SHOWN

Construction Plans
Cover

SHEET NUMBER

01

\\fms01\Drawings\2023\20236121-000\Utilities\Drawings\20236121-000_Cover.dwg (Notes & Legends) Michael Tison Mar. 31, 2025 - 3:27pm

ABBREVIATIONS

AC	ACRE
ALT	ALTERNATE
APPROX.	APPROXIMATE
ASB	ASBESTOS
BM	BENCH MARK
BLDG	BUILDING
BOT	BOTTOM
CB	CATCH BASIN
CF	CUBIC FEET
CFM	CUBIC FEET PER MINUTE
CI	CAST IRON
CIP	CAST IRON PIPE
CJ	CONSTRUCTION JOINT
CMF	CORRUGATED METAL PIPE
CO	CLEANOUT
CV	CHECK VALVE
CF	CUBIC FOOT
CY	CUBIC YARD
C	CENTER LINE
CLKG	CAULKING
CLF	CHAIN LINK FENCE
COL	COLUMN, COLOR
CONC	CONCRETE
CONST	CONSTRUCTION
CONT	CONTINUOUS
CONTR	CONTRACTOR
CTRS	CENTERS
CU	COPPER
CU. IN.	CUBIC INCH
DIA. Ø	DIAMETER
DIAG	DIAGONAL
DIM	DIMENSION
DIST.	DISTANCE
DIP	DUCTILE IRON PIPE
DE	DRAINAGE EASEMENT
DWG	DRAWING
E	EAST
EL/ELEV	ELEVATION
EQUIP	EQUIPMENT
ERCP	ENHANCED REINFORCED CONCRETE PIPE
ESMT	EASEMENT
EX	EXISTING
FF	FINISHED FLOOR
FFE	FINISHED FLOOR ELEVATION
FM	FORCE MAIN
FDC	FIRE DEPARTMENT CONNECTION
FDN	FOUNDATION
FIN	FINISH
FRP	FIBERGLASS REINFORCED PLASTIC
FT	FEET
G	NATURAL GAS
GC	GENERAL CONTRACTOR
GI	GALVANIZED IRON
GPM	GALLONS PER MINUTE
GV	GATE VALVE
GA	GAUGE
GAL	GALLON
GALV	GALVANIZED
GR	GRADE
HDPE	HIGH DENSITY POLYETHYLENE
HOR	HORIZONTAL
HYD	HYDRANT
ID	INSIDE DIAMETER
INV	INVERT
IRR	IRRIGATION
LAE	LAKE ACCESS EASEMENT
LF	LINEAL FEET
LME	LAKE MAINTENANCE EASEMENT
LMT	LAKE MAINTENANCE TRACT
MSD	MILLION GALLONS PER DAY
MH	MANHOLE
MJ	MECHANICAL JOINT
MAX	MAXIMUM
MECH	MECHANICAL
MES	MITERED END SECTION
MFR	MANUFACTURER
MIN	MINIMUM
MISC	MISCELLANEOUS
N	NORTH
NE	NORTHEAST
NW	NORTHWEST
NFW	NON POTABLE WATER
NTS	NOT TO SCALE
NUM/#	NUMBER
NOM	NOMINAL
NG	NATURAL GAS
OC	ON CENTERS
OCEW	ON CENTER EACH WAY
OD	OUTSIDE DIAMETER
PCF	POUNDS PER CUBIC FOOT
PSF	POUNDS PER SQUARE FOOT
PV	PLUG VALVE
PSI	POUNDS PER SQUARE INCH
PVC	POLYVINYL CHLORIDE
POLY. PE.	POLYETHYLENE
PAVT	PAVEMENT
PC	POINT OF CURVATURE
PGL	PROPOSED GRADE LINE
P	PROPERTY LINE
PLBG	PLUMBING
PLWD	PLYWOOD
PW	POTABLE WATER
PT	POINT OF TANGENCY
PUE	PUBLIC UTILITY EASEMENT
PVI	POINT OF VERTICAL INTERSECTION
QUAN	QUANTITY
R	RADIUS
RD	ROAD
RCP	REINFORCED CONCRETE PIPE
REQ'D	REQUIRED
ROW	RIGHT OF WAY
RU	REUSE LINE
R/W	RIGHT OF WAY
S	SOUTH
SE	SOUTHEAST
SW	SOUTHWEST
SS	SANITARY SEWER
SAN	SANITARY
SCH	SCHEDULE
SECT	SECTION
SH	SEWER
SPEC	SPECIFICATION
SQ	SQUARE
ST	STREET
STA	STATION
STL	STEEL
STD	STANDARD
SUR	SURFACE
SYM	SYMMETRICAL
TOE	TOE OF SLOPE
TOB	TOP OF BANK
THK	THICK
TEL	TELEPHONE
TEMP	TEMPERATURE
TRANS	TRANSFORMER
TYP	TYPICAL
UE	UTILITY EASEMENT
VERT	VERTICAL
W	WATER
WM	WATER MAIN
W/	WITH
W/O	WITHOUT
WD	WOOD
WT	WEIGHT
WV	WATER VALVE
WH	WALL HYDRANT

UTILITY LINETYPES

	EXISTING	PROPOSED
WATER MAIN	— EX WM —	WM
WATER MAIN WITH SIZE	— EX 6" WM —	PR. 8" WM
WATER SERVICE	— EX WS —	
FORCE MAIN	— EX FM —	FM
FORCE MAIN WITH SIZE	— EX 6" FM —	PR. 8" FM
IRRIGATION MAIN	— EX IRR —	IRR
IRRIGATION MAIN WITH SIZE	— EX 6" IRR —	PR. 8" IRR
REUSE MAIN	— EX RU —	RU
REUSE MAIN WITH SIZE	— EX 6" RU —	PR. 8" RU
IQ MAIN	— EX IQ —	IQ
IQ MAIN WITH SIZE	— EX 6" IQ —	PR. 8" IQ
RAW WATER MAIN	— EX RW —	RW
RAW WATER MAIN WITH SIZE	— EX 6" RW —	PR. 8" RW
SANITARY SEWER	— EX SS —	SS
SANITARY SEWER WITH SIZE	— EX 6" SS —	PR. 8" SS
CABLE TELEVISION	— EX TV —	
CLOSED CIRCUIT TELEVISION	— EX CCTV —	
MISC. COMMUNICATION	— EX COMM —	
ELECTRIC	— EX ELEC —	
OVERHEAD ELECTRIC	— EX O/H-ELEC —	
UNDERGROUND ELECTRIC	— EX UHE —	
GAS MAIN	— EX GAS —	
GAS MAIN WITH SIZE	— EX 6" GAS —	
FIRE MAIN	— EX FIRE —	
DRAINAGE	— EX SD —	
DRAINAGE WITH SIZE	— EX 6" DR —	
STORM WATER	— EX STM —	
TELEPHONE	— EX TEL —	
UNDERGROUND TELEPHONE	— EX UGT —	

SYMBOLS

	GATE VALVE
	TEE ASSEMBLY
	REDUCER
	BLOW OFF
	FIRE HYDRANT
	FIRE HYDRANT ASSEMBLY W/ GATE VALVE
	MITERED END SECTION
	MANHOLE W/ NUMBER
	PLUG VALVE
	AIR RELEASE VALVE
	11.25° BEND
	22.5° BEND
	45° BEND
	90° BEND
	VERTICAL DEFLECTION
	WYE
	WATER SERVICE (DOUBLE)
	WATER SERVICE (SINGLE)
	IRRIGATION SERVICE (DOUBLE)
	IRRIGATION SERVICE (SINGLE)
	SEWER SERVICE (DOUBLE)
	SEWER SERVICE (SINGLE)
	HEADWALL
	DRAINAGE INLET (SEE PLAN FOR TYPES)
	THROAT INLET
	FLARED END SECTION

PRINTING AND PLOTTING NOTE:

PRINTING FULL SIZE OR 22"X34" PLANS:

- 22"X34" PLANS ARE MEANT TO BE PLOTTED AT 20 SCALE.
(SEE INDIVIDUAL SCALE BARS ON EACH SHEET FOR DEVIATIONS)
- WHEN PRINTING FULL SIZE PLANS (22"X34") MAKE SURE THE PROPER SIZE PAPER IS USED, FAILURE TO DO SO WILL RESULT IN PLANS THAT ARE NOT TO SCALE.
- WHEN PRINTING 22"X34" PDF'S FROM ADOBE SELECT "ACTUAL SIZE" & "CHOOSE PAPER SOURCE BY PDF PAGE SIZE"

PRINTING 1/2 SIZE OR 11"X17" PLANS:

- 11"X17" PLANS ARE MEANT TO BE PLOTTED AT 40 SCALE.
(SEE INDIVIDUAL SCALE BARS ON EACH SHEET FOR DEVIATIONS)
- WHEN PRINTING 1/2 SIZE PLANS (11"X17") MAKE SURE THE PROPER SIZE PAPER IS USED, FAILURE TO DO SO WILL RESULT IN PLANS THAT ARE NOT TO SCALE.
- WHEN PRINTING 11"X17" PDF'S FROM ADOBE SELECT "ACTUAL SIZE" & "CHOOSE PAPER SOURCE BY PDF PAGE SIZE"

GENERAL NOTES:

1. ALL CONSTRUCTION SHALL CONFORM TO THE REQUIREMENTS OF CITY OF FORT MYERS AND LEE COUNTY UTILITIES, WHICHEVER IS MORE STRINGENT. ANY UTILITY INSTALLED BELOW THE SURFACE OF THE NATURAL GROUND, STREAM BOTTOMS, PAVEMENT, OR DRAINAGE CANALS AND DITCHES MUST BE PLACED SO THAT THE DISTANCE, AS MEASURED FROM THE LOWER OF THE DESIGN GRADE OR THE NATURAL GROUND TO THE UPPERMOST PART OF THE UTILITY, IS NOT LESS THAN THIRTY-SIX INCHES (36").
2. CONTRACTOR SHALL NOT EXCEED 75% OF THE MANUFACTURERS RECOMMENDED MAXIMUM DEFLECTION WHEN DEFLECTING PIPE. ENGINEER WILL DETERMINE MAXIMUM DEFLECTION AFTER PIPE MANUFACTURER IS SELECTED.
3. THE CONTRACTOR SHALL KEEP A RECORD OF ALL CHANGES AND MAINTAIN AN AS-BUILT PLAN. PRIOR TO FINAL ACCEPTANCE, THIS PLAN WILL BE FURNISHED TO THE ENGINEER. THE CONTRACTOR SHALL ALSO FURNISH THE ENGINEER WITH A STATEMENT THAT THE AS-BUILT PLAN REPRESENTS ALL CHANGES MADE AND THAT THE LOCATION OF FORCEMAINS SHOWN ARE WITHIN 2'.
4. CONTRACTOR TO MAINTAIN EXISTING TRAFFIC/ACCESS, EXISTING DRAINAGE & EXISTING UTILITIES DURING CONSTRUCTION.
5. ALL FINAL FITTING AND VALVE LOCATIONS TO BE APPROVED IN THE FIELD BY THE OWNER/ENGINEER.
6. THE LOCATION OF EXISTING UTILITIES HAS BEEN PREPARED FROM THE MOST RELIABLE INFORMATION AVAILABLE TO THE ENGINEER. THE INFORMATION IS NOT GUARANTEED. THEREFORE THE CONTRACTOR SHALL VERIFY THE LOCATION AND ELEVATION OF ALL UTILITIES IN THE FIELD PRIOR TO THE START OF ANY CONSTRUCTION ACTIVITIES.
7. THE CONTRACTOR SHALL NOTIFY ALL UTILITY COMPANIES IN THE AREA 48 HOURS MINIMUM PRIOR TO START OF CONSTRUCTION, AND SHALL HAVE ALL SERVICE LINES (UTS, FPL, WATER, CABLE AT&T, SANITARY SEWER, IRRIGATION, FORCE MAIN & ANY OTHERS) LOCATED AND FLAGGED PRIOR TO ANY EXCAVATION.
8. THE CONTRACTOR IS RESPONSIBLE FOR REPAIRING ALL UTILITY LINES AND SERVICES DAMAGED DURING CONSTRUCTION, INCLUDING IRRIGATION LINES AND SERVICES. THE APPROPRIATE UTILITY SHALL BE NOTIFIED OF ALL DAMAGED LINES PRIOR TO REPAIR. ALL NECESSARY REPAIRS SHALL BE PERFORMED IMMEDIATELY UPON DAMAGE OF LINE.
9. ALL DRIVEWAYS, LANDSCAPING, SIGNS, GRASS, FENCING, ETC. SHALL BE RESTORED TO A CONDITION EQUIVALENT TO PRECONSTRUCTION CONDITION UNLESS OTHERWISE APPROVED BY THE ENGINEER AND OWNER.
10. ALL ELEVATIONS REFER TO NORTH AMERICA VERTICAL DATUM OF 1988 (NAVD88). CONVERSION FROM NAVD88 TO NATIONAL GEODETIC VERTICAL DATUM OF 1929 (NGVD29) IS AS FOLLOWS:
NAVD88 + 1.14 = NGVD29.
11. THE CONTRACTOR IS REQUIRED TO OBTAIN WRITTEN APPROVAL FROM THE ENGINEER FOR ANY DEVIATIONS FROM THE PLANS AND/OR SPECIFICATIONS.
12. THE CONTRACTOR SHALL FIELD VERIFY ALL DIMENSIONS AND ELEVATIONS PRIOR TO COMMENCEMENT OF CONSTRUCTION AND NOTIFY THE ENGINEER IMMEDIATELY OF ANY REQUIRED PLAN DEVIATIONS.
13. THE CONTRACTOR SHALL BE RESPONSIBLE FOR MAINTAINING TRAFFIC AND USAGE OF THE EXISTING STREETS ADJACENT TO THE PROJECT AREA. ALL TRAFFIC MAINTENANCE CONTROL SHALL BE IN ACCORDANCE WITH THE FLORIDA DEPARTMENT OF TRANSPORTATION ROADWAY AND TRAFFIC DESIGN STANDARDS, INDEX 600 SERIES. CONTRACTOR SHALL SUBMIT MAINTENANCE OF TRAFFIC PLAN TO OWNER/ENGINEER PRIOR TO CONSTRUCTION.
14. ALL UTILITY CONNECTIONS SHALL CONFORM TO THE STANDARDS AND REQUIREMENTS OF THE AGENCY HAVING JURISDICTION OF EACH INDIVIDUAL UTILITY LINE.
15. THE UNDERGROUND CONTRACTOR SHALL MINIMIZE THE WORK AREA AND WIDTH OF TRENCHES TO AVOID DISTURBANCES OF NATURAL VEGETATION, SPOIL FROM TRENCHES SHALL BE PLACED ONLY ON PREVIOUSLY CLEARED AREAS, EXISTING RIGHT-OF-WAY OR APPROVED EASEMENT. THE CONTRACTOR SHALL NOT REMOVE OR DISTURB ANY TREES OR SHRUBS WITHOUT PRIOR APPROVAL FROM THE ENGINEER.
16. THE 36" MINIMUM COVER REQUIREMENT FOR THE PROPOSED WATER MAIN SHALL BE MEASURED FROM FINISHED GRADES. IT IS THE CONTRACTOR'S RESPONSIBILITY TO ENSURE MINIMUM COVER REGARDLESS OF EXISTING GRADE PERIODIC CHECKS (MIN. EVERY 100 FT.) FOR MINIMUM COVER SHALL BE MADE BY THE CONTRACTOR AND RECORDED ON THE RECORDS DRAWINGS.
17. ALL FITTINGS SHALL BE RESTRAINED WITH MEGALUG OR APPROVED EQUAL.
18. ALL IN LINE VALVES SHALL BE MAIN SIZE MECHANICAL JOINT AND RESTRAINED WITH MOLDED FLANGE ADAPTOR WITH STEEL RETAINING RING AS SUPPLIED BY PIPE MANUFACTURER.
19. THE CONTRACTOR SHALL NOTIFY RESIDENCES AND BUSINESS AT LEAST 48 HOURS IN ADVANCE OF ANY DISRUPTION IN SERVICE, INCLUDING DRIVEWAY CUTS.
20. WATER MAINS SHALL BE SUBJECT TO FLUSHING AND BACTERIOLOGICAL SAMPLING.
21. CONTRACTOR IS ADVISED TO VISIT CONSTRUCTION SITE PRIOR TO BIDDING PROJECT. BID IS FINAL AND ACKNOWLEDGES THAT CONTRACTOR IS FAMILIAR WITH EXISTING SITE CONDITIONS.
22. RESTRAINING OF PIPELINE SHALL BE IN ACCORDANCE WITH STANDARD SPECIFICATIONS. NO THRUST BLOCKS SHALL BE ALLOWED, UNLESS OTHERWISE SPECIFIED.
23. WHEN A CONFLICT ARISES BETWEEN INVERT ELEVATIONS SHOWN IN PLAN AND PROFILE VIEWS, PROFILE ELEVATIONS SHALL TAKE PRECEDENT.
24. CONTRACTORS SHALL PROVIDE COMPLETE LIST OF 24 HR EMERGENCY PHONE NUMBERS.

RESTORATION LEGEND	
ASPHALT DRIVE	ASPH. SIDEWALK
CONCRETE DRIVE PAINTED OR STAMPED	BRICK SIDEWALK
CONCRETE DRIVE	CONC. SIDEWALK
BRICK DRIVE	ROADWAY
GRAVEL/DIRT DRIVE	ROADWAY TRENCH



NOTICE TO ALL CONTRACTORS

IT'S THE LAW IN FLORIDA
2 BUSINESS DAYS BEFORE YOU DIG
CALL SUNSHINE 1-800-432-4770

STATE, COUNTIES & CITIES ARE "NOT"
PART OF THE ONE CALL SYSTEM.
THEY MUST BE CALLED INDIVIDUALLY.

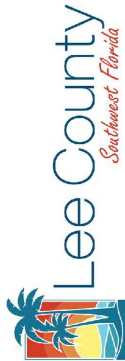
STATE OF FLORIDA DOT
ALL INTERSTATE RIGHT-OF-WAY
HIGHMAST LIGHTING
7-DAY NOTICE REQUIRED
239-656-7811
239-656-7742 FAX

JOHNSON
ENGINEERING

— An Apex Company —

JOHNSON ENGINEERING, LLC.
2122 JOHNSON STREET
FORT MYERS, FLORIDA 33902-1550
PHONE: (239) 334-0046
E.R. #642 & L.B. #642

DAVID BRICE TROUTEAUD, PE
FL License No. 69783



Utility Main Improvements
Along Access Drive to
Material Recovery Facility
Lee County, Florida

REVISIONS

NO.	DESCRIPTION	DATE

DATE: MARCH 31, 2025
PROJECT NO. 20236121-000
FILE NO. 36-44-25
SCALE: AS SHOWN

Construction Plans
Notes & Legends

SHEET NUMBER

02

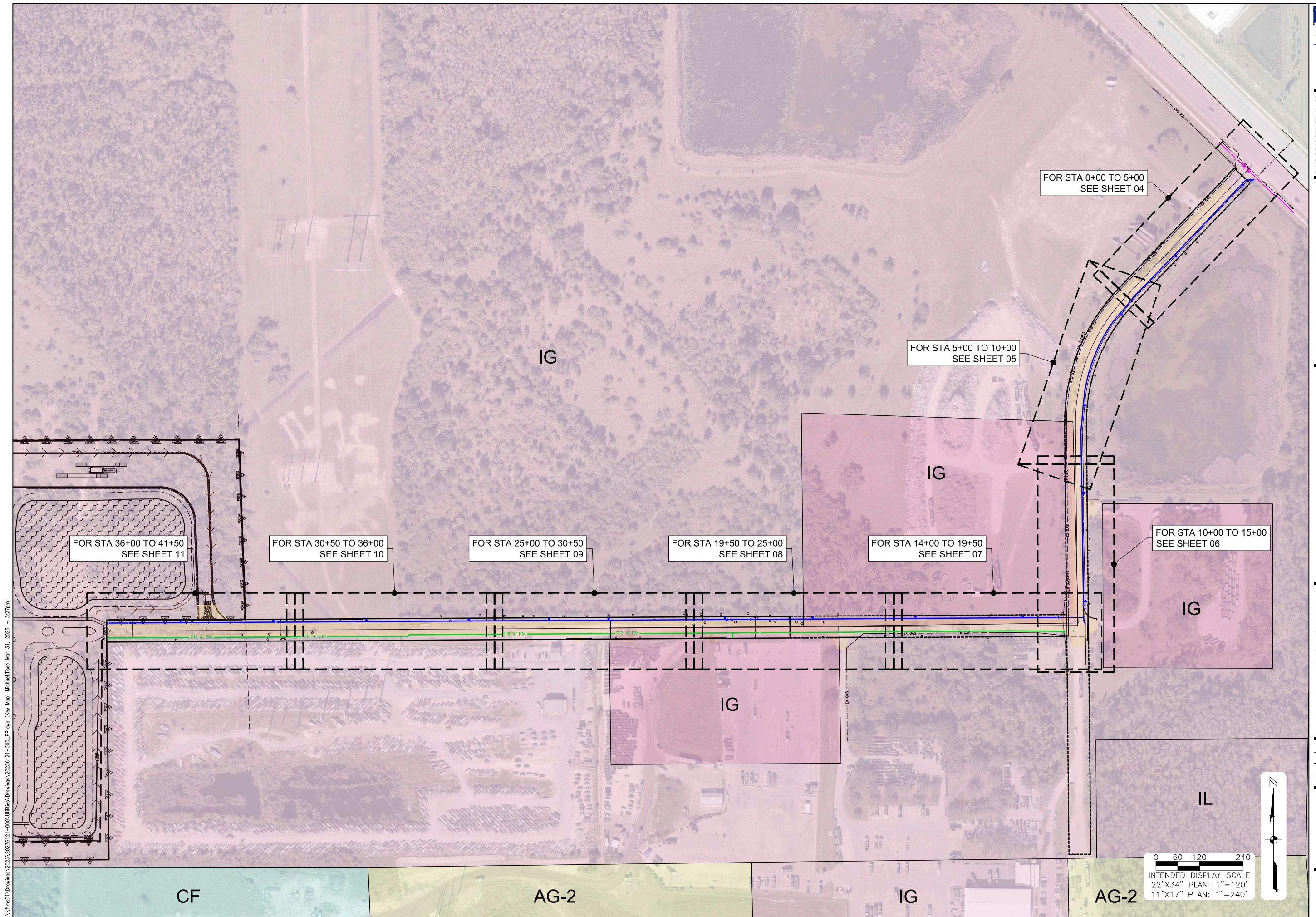
Utility Main Improvements Along Access Drive to Material Recovery Facility Lee County, Florida

[illegible]

Construction Plans
Key Map

SHEET NUMBER

03

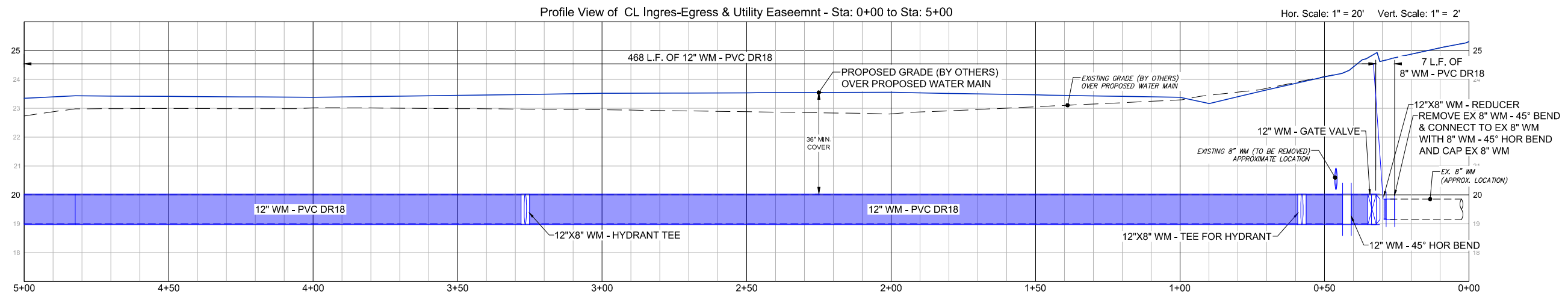
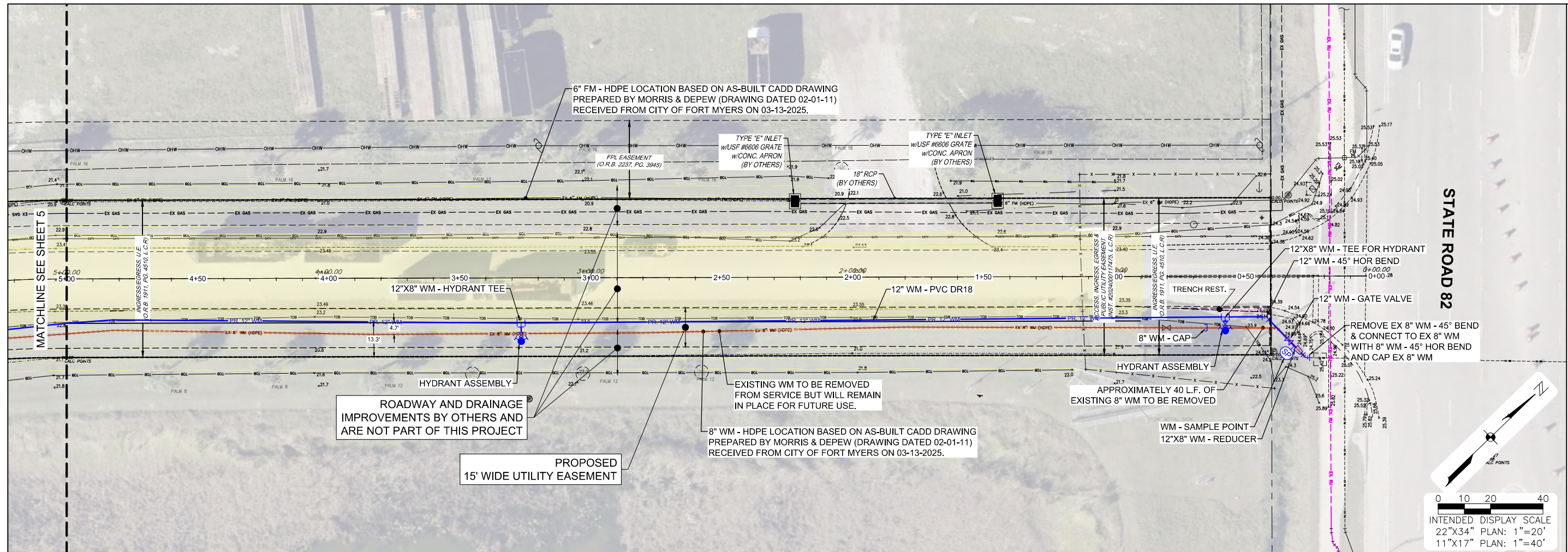


[illegible]

Construction Plans
Plan & Profile
Sta 0+00 to 5+00

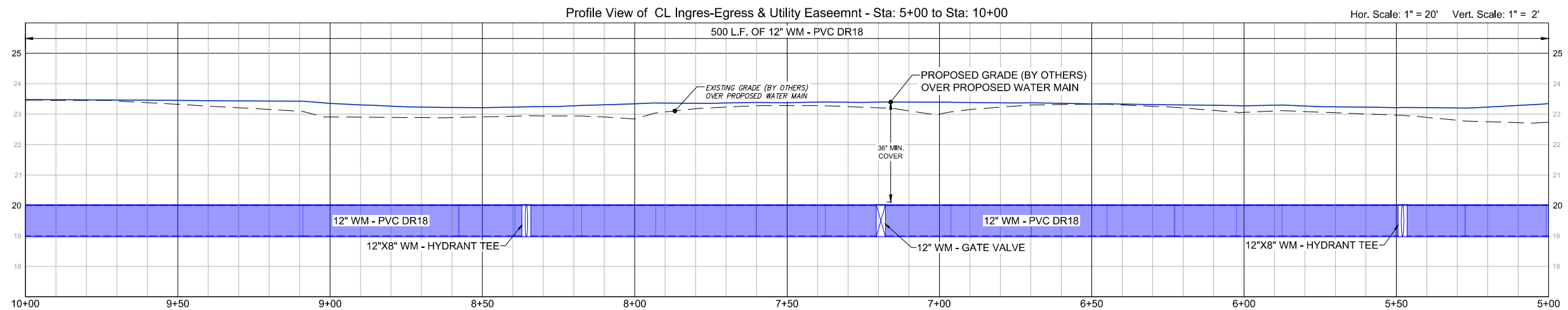
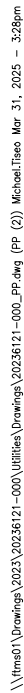
SHEET NUMBER

04

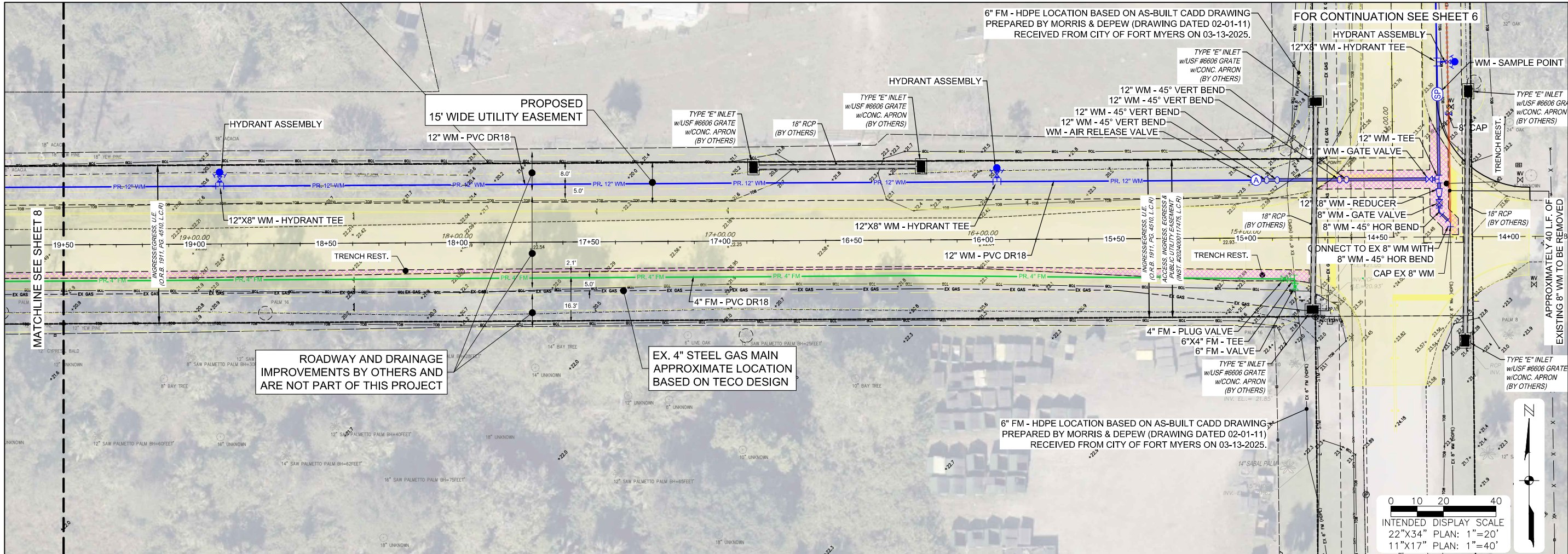


\\\\ftms01\\Drawings\\2023\\20236121-000\\Utilities\\Drawings\\20236121-000_PP.dwg (PP (1)) Michael.Tiseo Mar 31, 2025 - 3:28pm

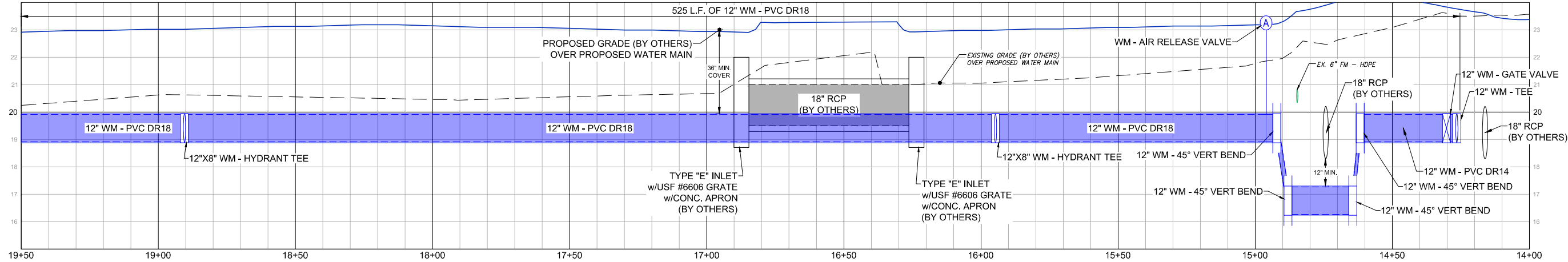
Construction Plans
Plan & Profile
Sta 5+00 to 10+00



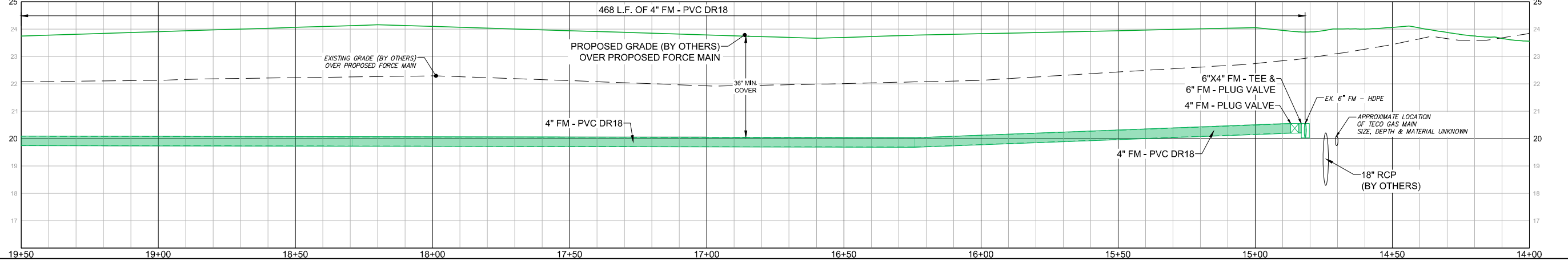
\\fms01\Drawings\2023\20236121-000\Utilities\Drawings\20236121-000_PP.dwg (PP (4)) Michael Tisco Mar 31, 2025 - 3:25pm



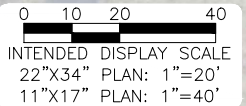
Profile View of CL Ingres-Egress & Utility Easemnt (2) - Sta: 14+00 to Sta: 19+50



Profile View of CL Ingres-Egress & Utility Easemnt (2) - Sta: 14+00 to Sta: 19+50

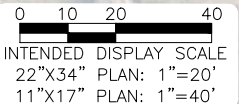


Construction Plans
Plan & Profile
Sta 19+50 to 25+00

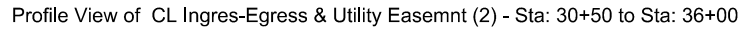
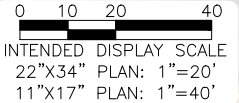


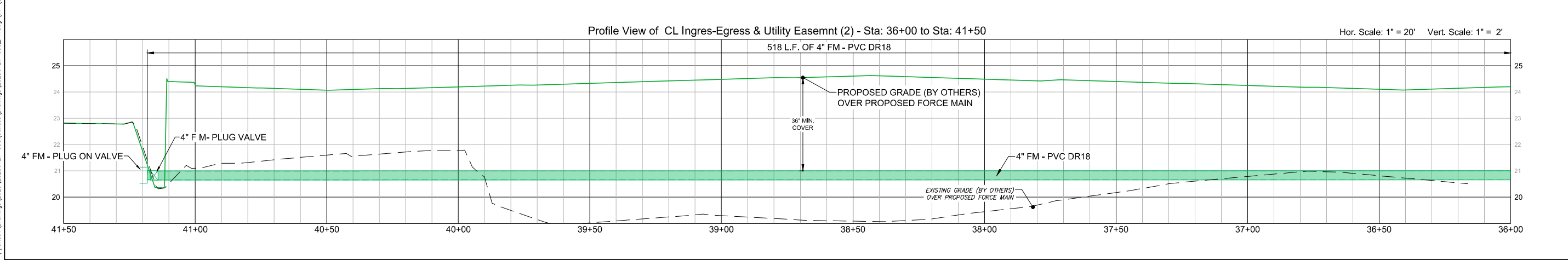
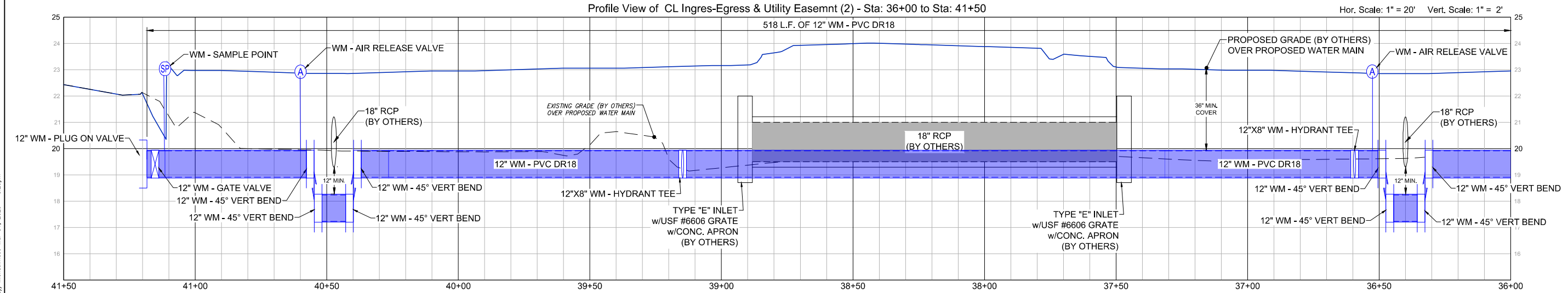
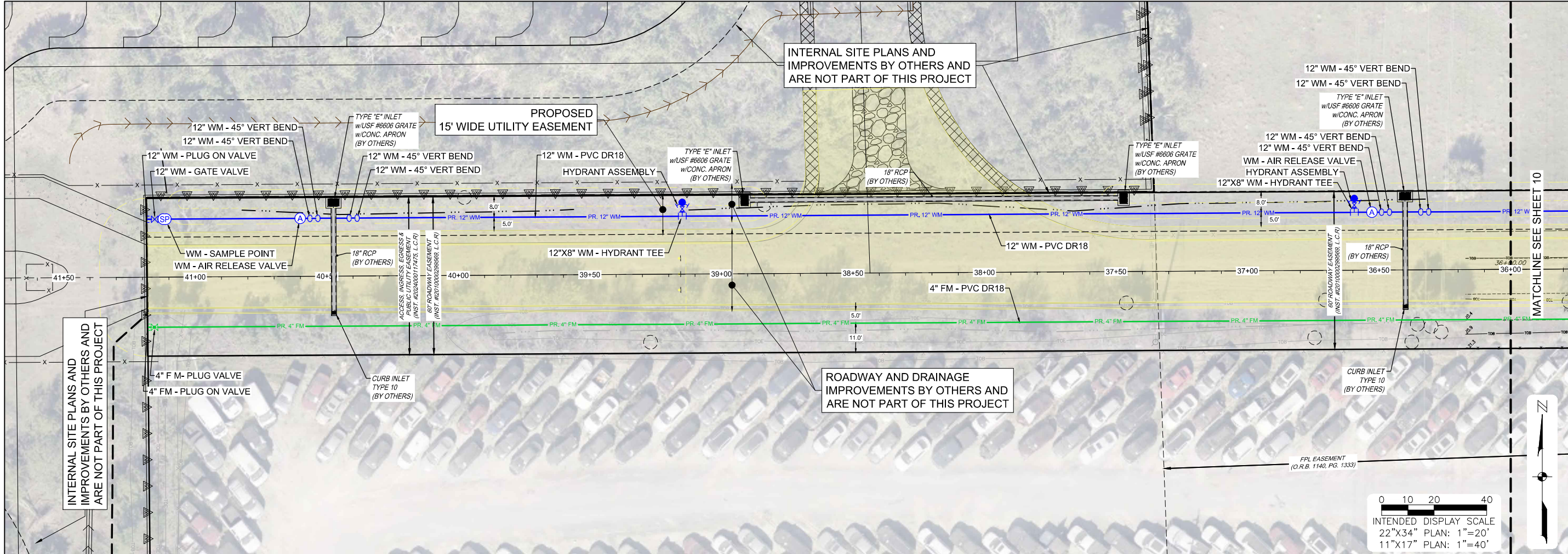
[illegible]

SHEET NUMBER



Construction Plans
Plan & Profile
Sta 30+50 to 36+00





DATE	
REVISIONS	
DESCRIPTION	
NO.	

DATE:	MARCH 31, 2025
PROJECT NO.	20236121-000
FILE NO.	36-44-25
SCALE:	AS SHOWN

Construction Plans
Plan & Profile
Sta 36+00 to 41+50

\\fms01\Drawings\2023\20236121-000\Utilities\Drawings\20236121-000_Cover.dwg (Detail: (1)) Michael Tison Mar. 31, 2025 - 3:30pm

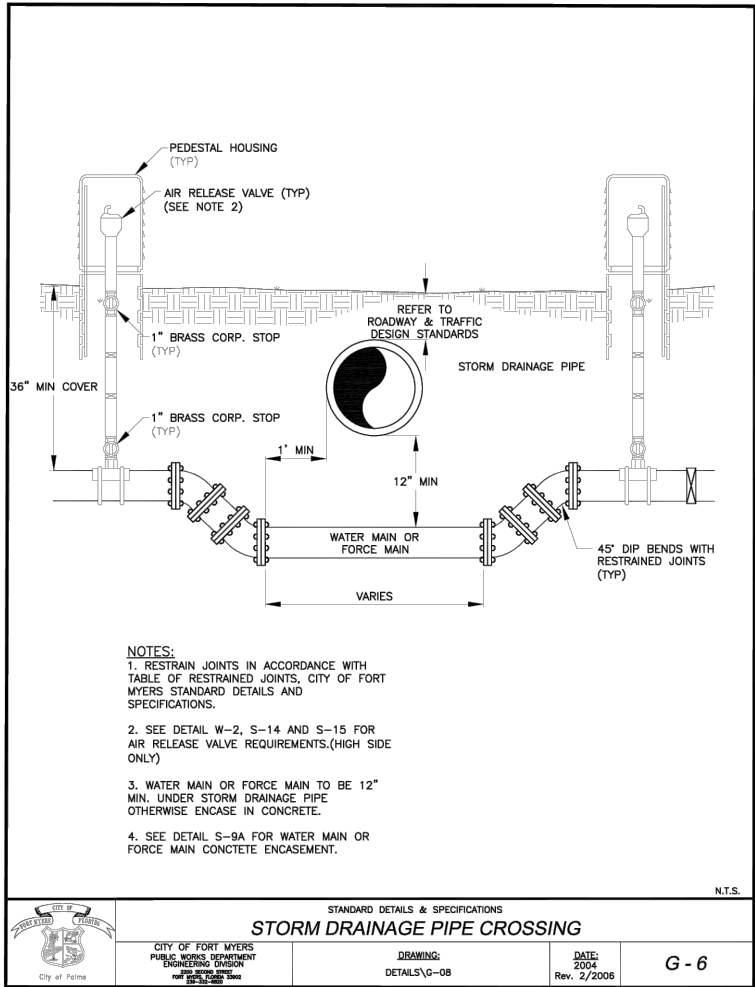
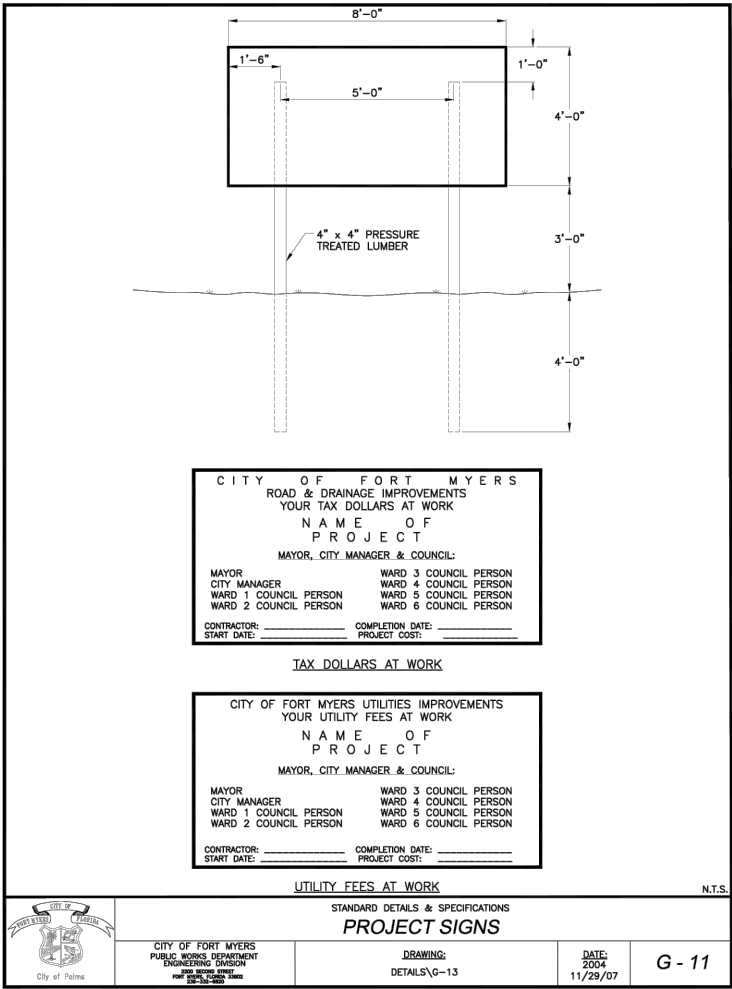
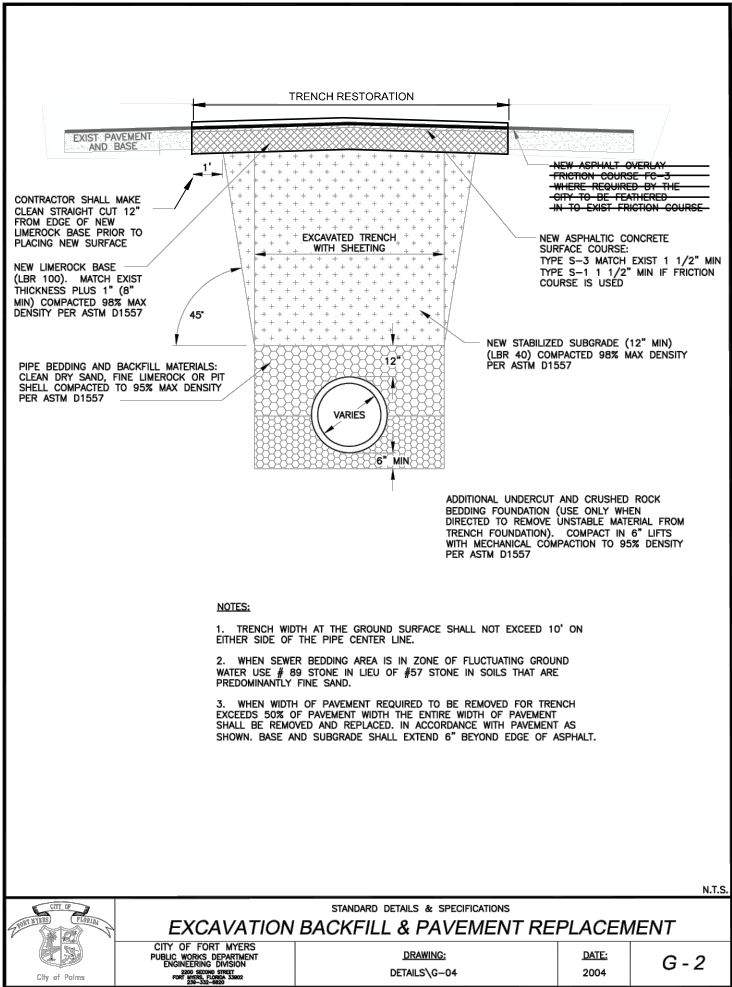
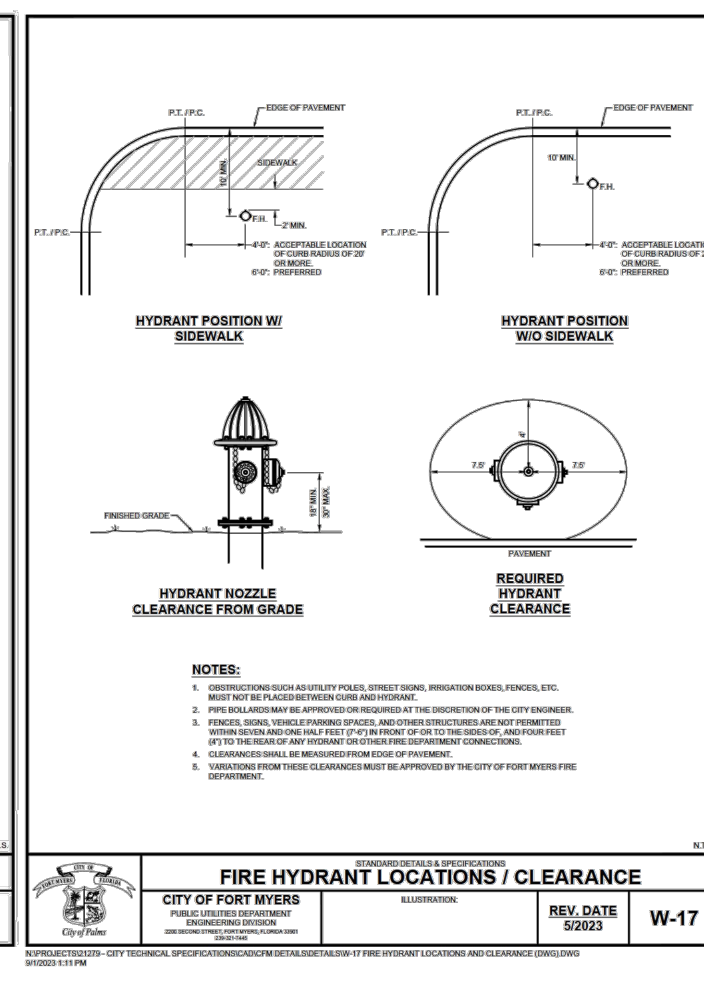
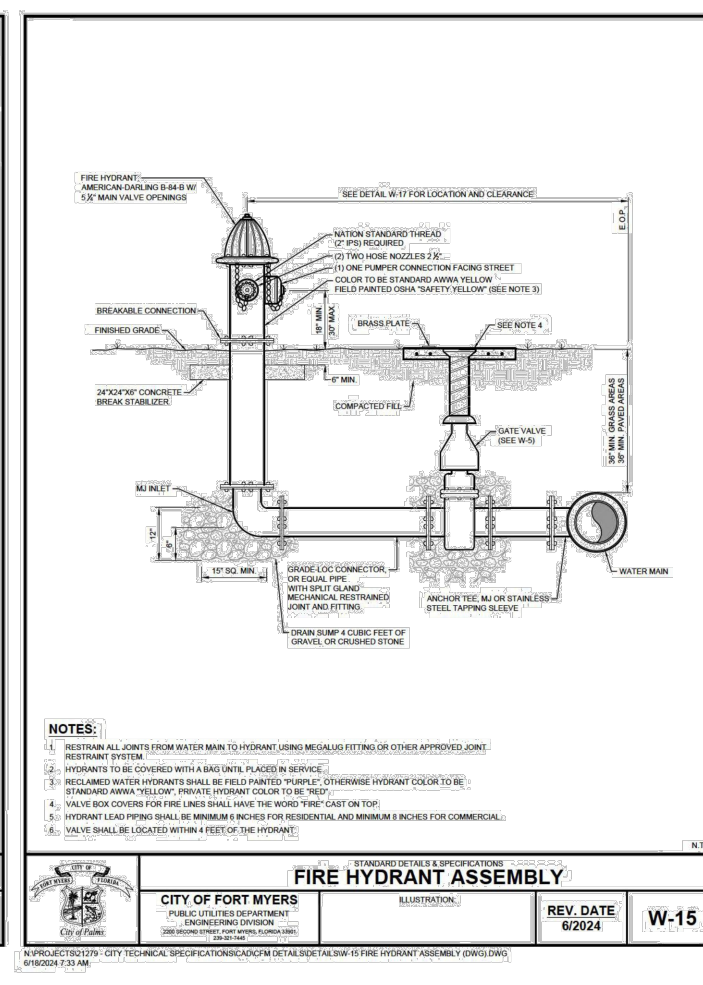
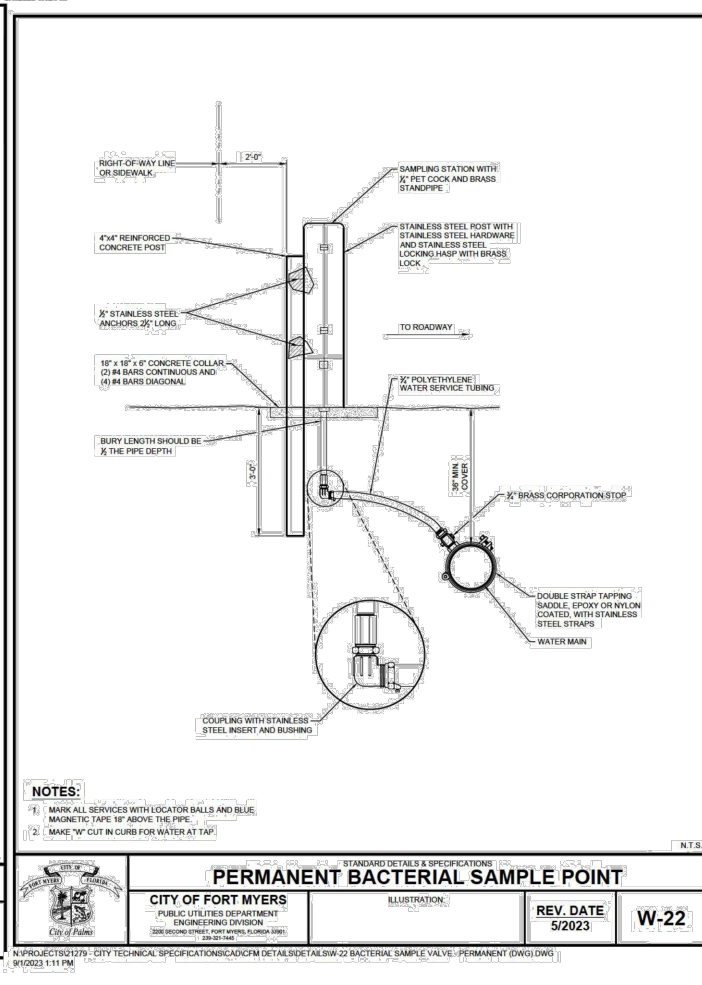
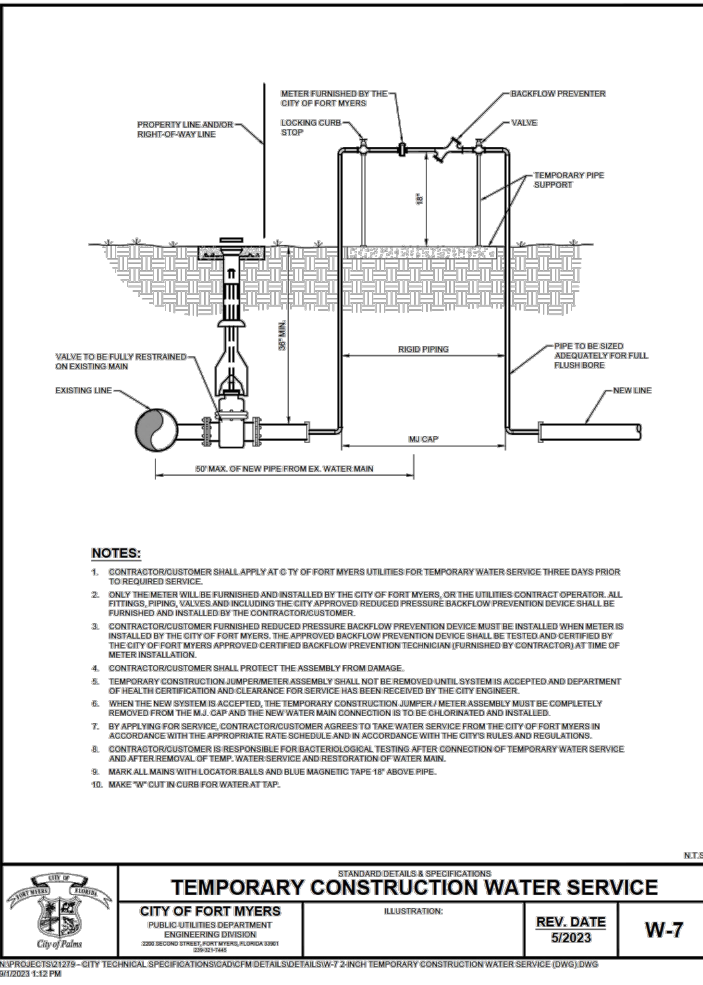
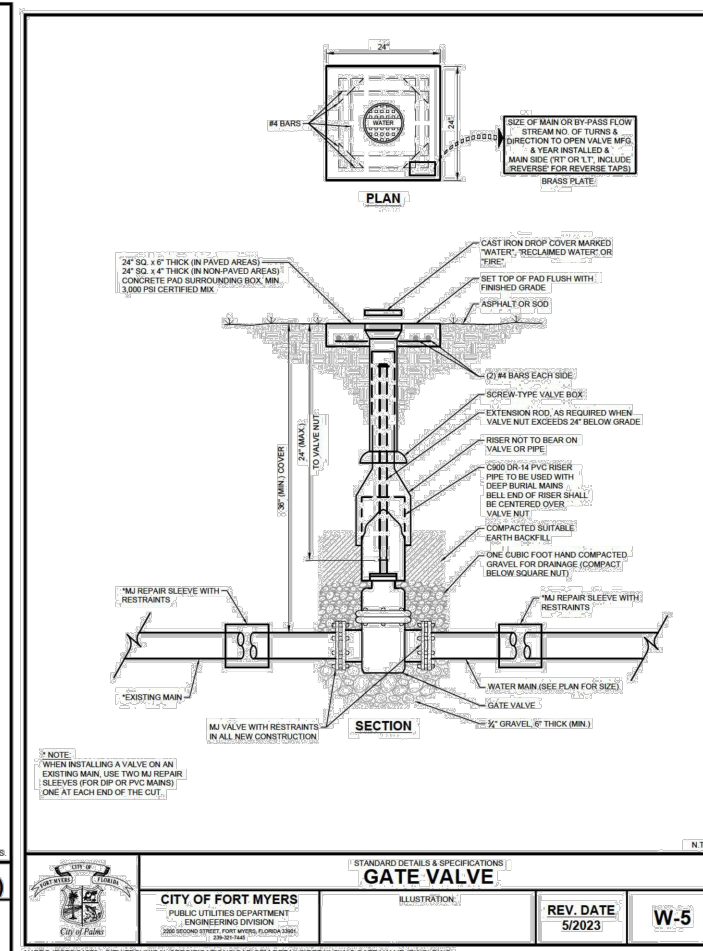
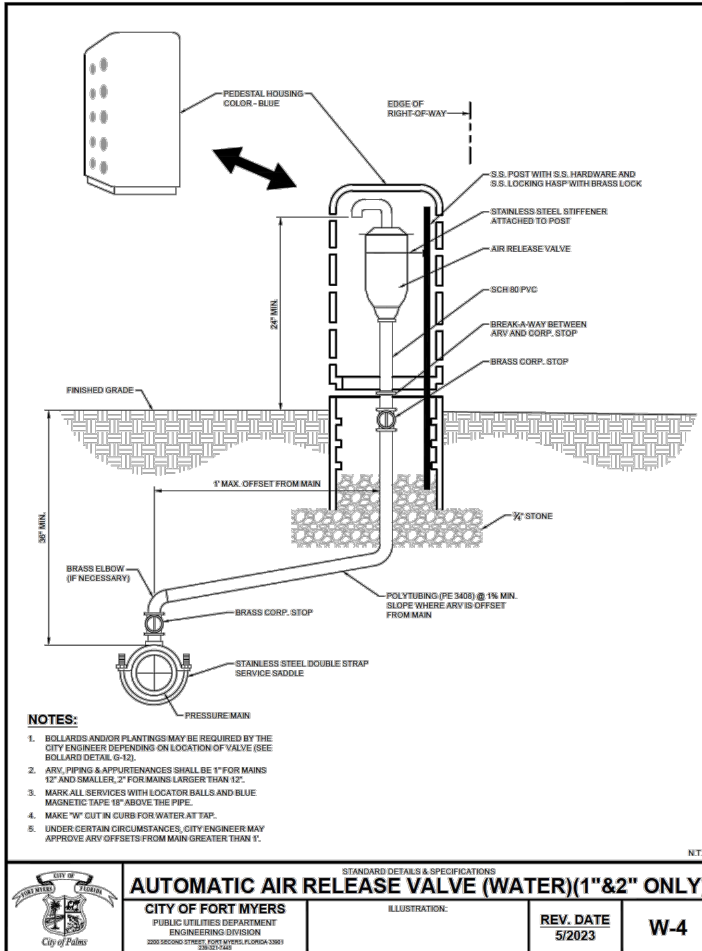
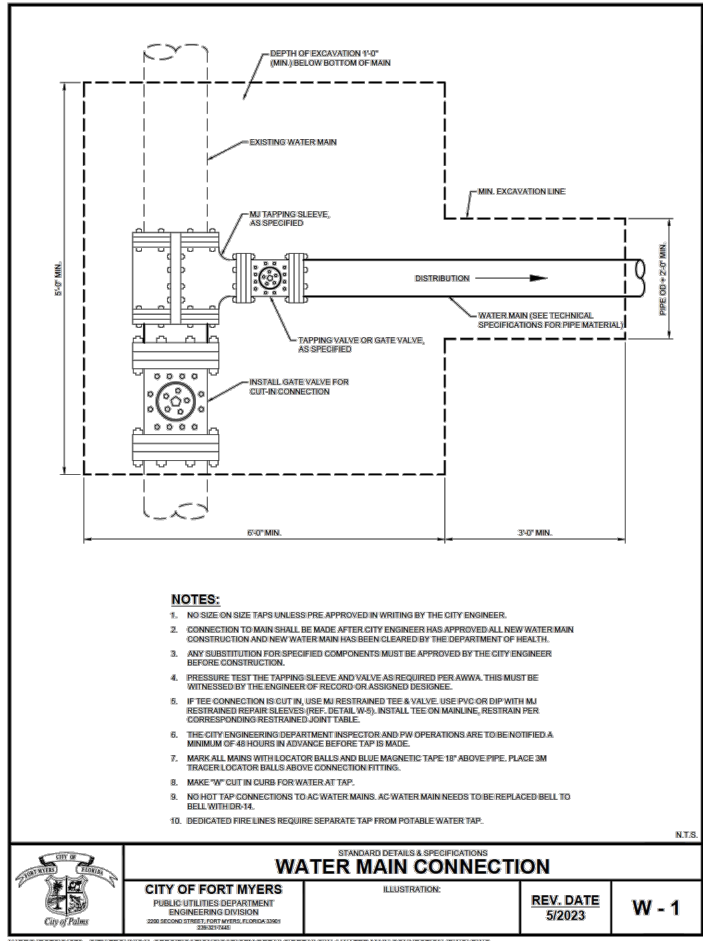


TABLE OF RESTRAINED JOINTS FOR MEG-A-LUG TYPE JOINT RESTRAINTS PVC PIPE RESTRAINTS		
FITTING TYPE	PIPE SIZE INCHES	RESTRAINED LENGH FT.
90 DEG. HORIZONTAL BEND	4	12
	6	19
	8	25
	10	27
	12	35
	16	40
45 DEG. HORIZONTAL BEND	4	5
	6	8
	8	10
	10	11
	12	14
	16	16
22.5 DEG. HORIZONTAL BEND	4	2
	6	4
	8	5
	10	5
	12	7
	16	8
11.25 DEG. HORIZONTAL BEND	4	1
	6	2
	8	2
	10	3
	12	3
	16	4
45 DEG. VERTICAL BEND	4	LHS 16, LLS 3
	6	LHS 22, LLS 5
	8	LHS 29, LLS 6
	10	LHS 34, LLS 7
	12	LHS 41, LLS 9
	16	LHS 52, LLS 11
22.5 DEG. VERTICAL BEND	4	LHS 7, LLS 2
	6	LHS 11, LLS 2
	8	LHS 14, LLS 3
	10	LHS 17, LLS 3
	12	LHS 20, LLS 4
	16	LHS 25, LLS 5
11.25 DEG. VERTICAL BEND	4	LHS 4, LLS 1
	6	LHS 5, LLS 1
	8	LHS 7, LLS 1
	10	LHS 8, LLS 2
	12	LHS 10, LLS 2
	16	LHS 12, LLS 3
TEE W/6" BRANCH	6	20 RUN E.W., 1' BRANCH*
	8	20 RUN E.W., 1' BRANCH*
	10	20 RUN E.W., 1' BRANCH*
	12	20 RUN E.W., 1' BRANCH*
	16	20 RUN E.W., 1' BRANCH*
TEE W/8" BRANCH	8	20 RUN E.W., 1' BRANCH*
	10	20 RUN E.W., 1' BRANCH*
	12	20 RUN E.W., 1' BRANCH*
	16	20 RUN E.W., 1' BRANCH*
TEE W/12" BRANCH	12	20 RUN E.W., 1' BRANCH*
	16	20 RUN E.W., 1' BRANCH*
TEE W/ 16" BRANCH	16	20 RUN E.W., 1' BRANCH*
DEAD END CAP	4	38
	6	53
	8	69
	10	83
	12	98LR**
	16	126LR**
REDUCER 8" TO 6"	8	29' 8" PIPE
REDUCER 10" TO 8"	10	28' 10" PIPE
NOTES:	3 FT. PIPE COVER MIN, TEST PRES. 150 PSI, *RESTRAINED FITTING ONLY, **ALTERNATELY RESTRAIN BACK TO TEE AT BEGINNING OF BRANCH, # UNOBSTRUCTED LENGTH ON THE SMALLER SIDE OF REDUCER, LHS = LENGTH OF HIGH SIDE OF FITTING, LLS = LENGTH ON LOW SIDE OF FITTING, LR = LENGTH OF RUN, E.W. = EACH WAY FROM FITTING, FACTOR OF SAFETY = 1.5.	

\\fms01\Drawings\2023\4121-000\Utilities\Drawings\2023\4121-000_Cover.dwg (Detail) (2) Michael Tene Mar 31, 2025 - 3:30pm



DATE	DESCRIPTION
NO.	
DATE	MARCH 31, 2025
PROJECT NO.	20236121-000
FILE NO.	36-44-25
SCALE:	AS SHOWN

N:\PROJECTS\121279 - CITY TECHNICAL SPECIFICATIONS\CAD\CFM DETAILS\DETAILS\3-SANITARY SEWER-FORCE MAIN-WATER MAIN MINIMUM CLEARANCE (DWG).DWG
9/1/2023 1:09 PM

