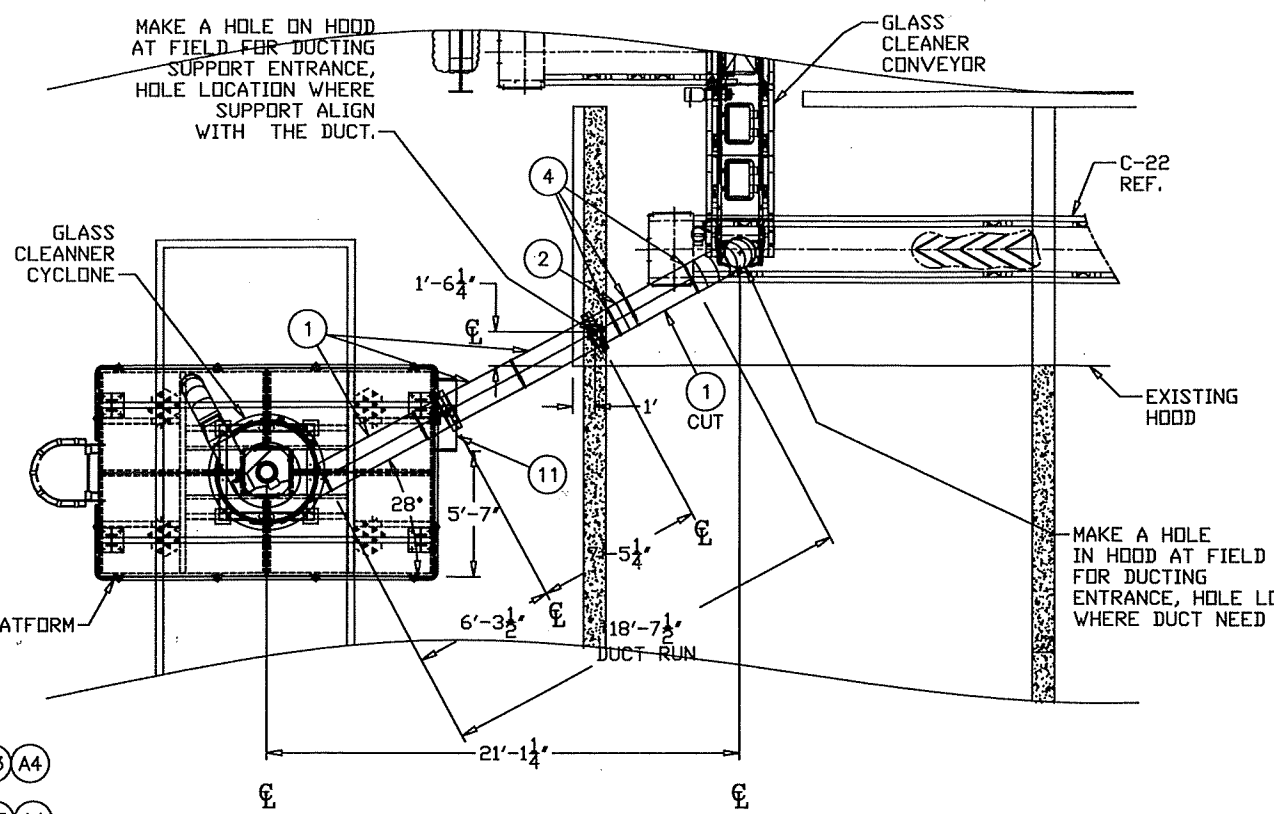
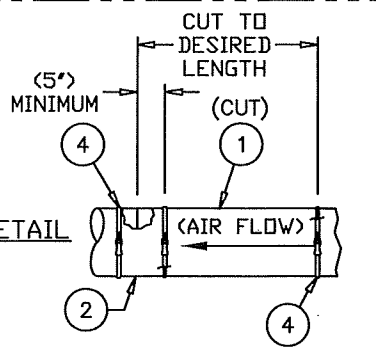


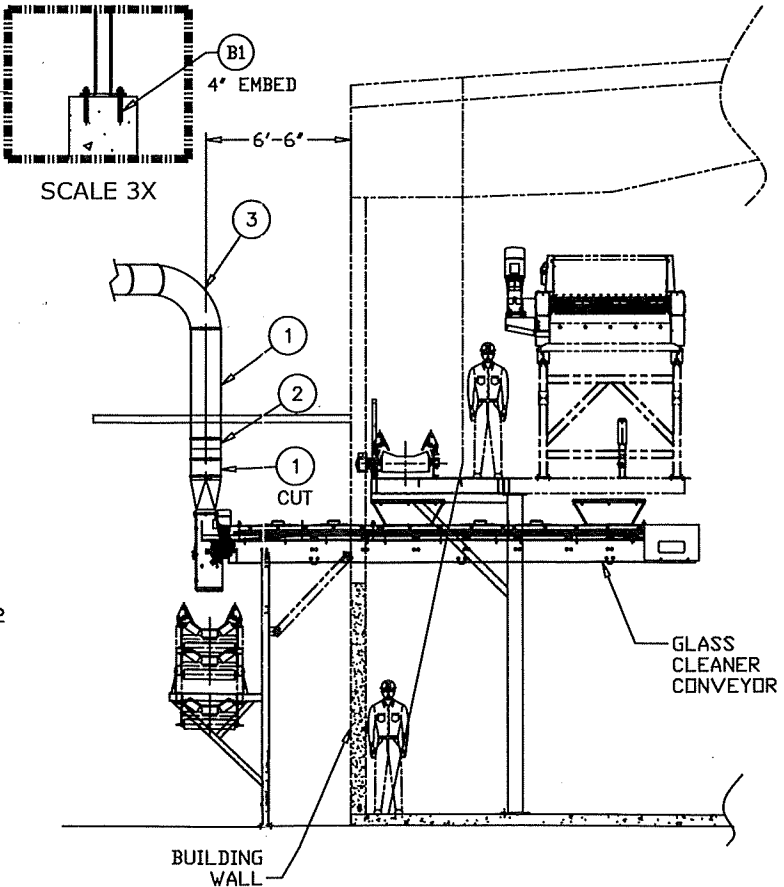
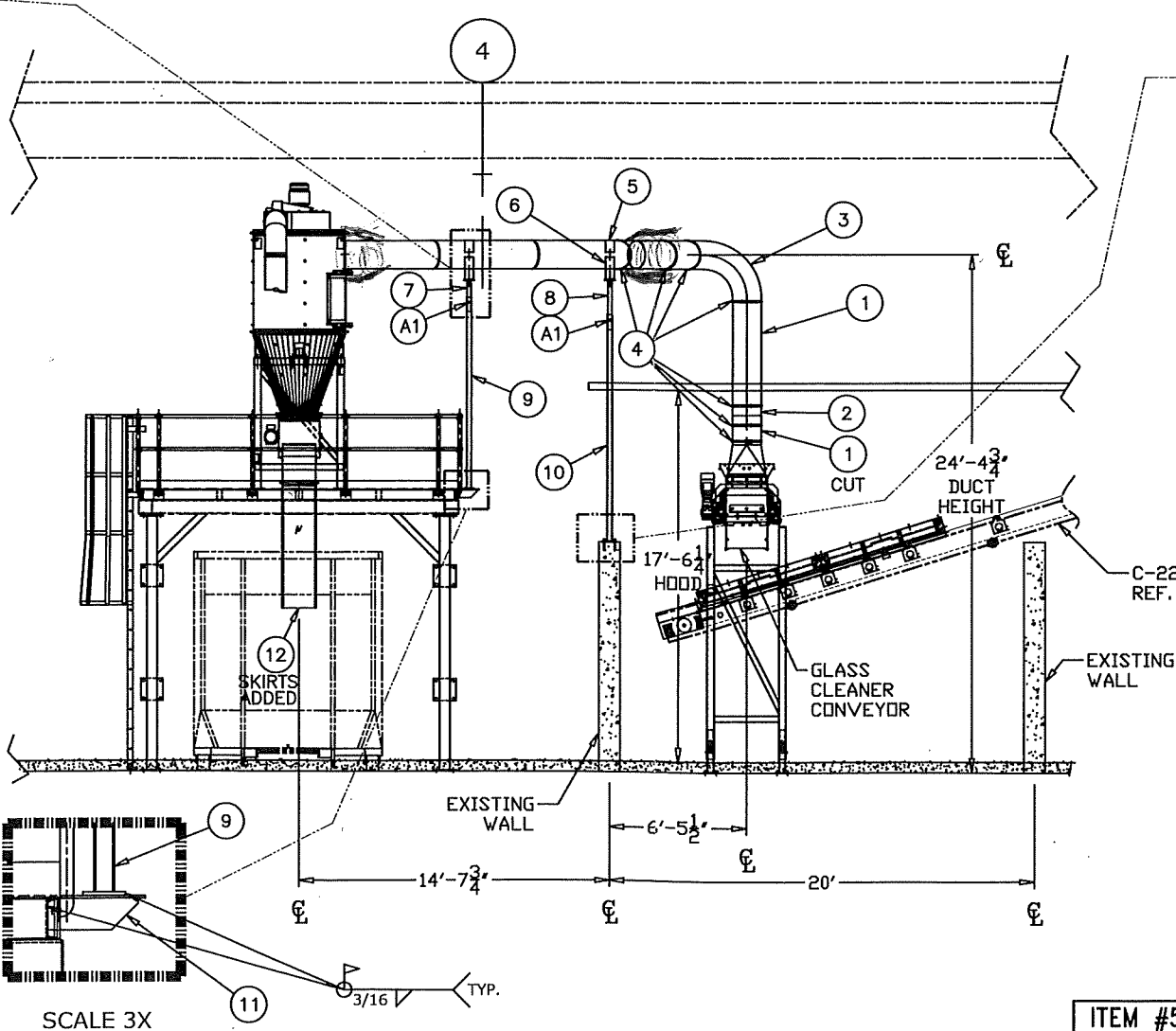
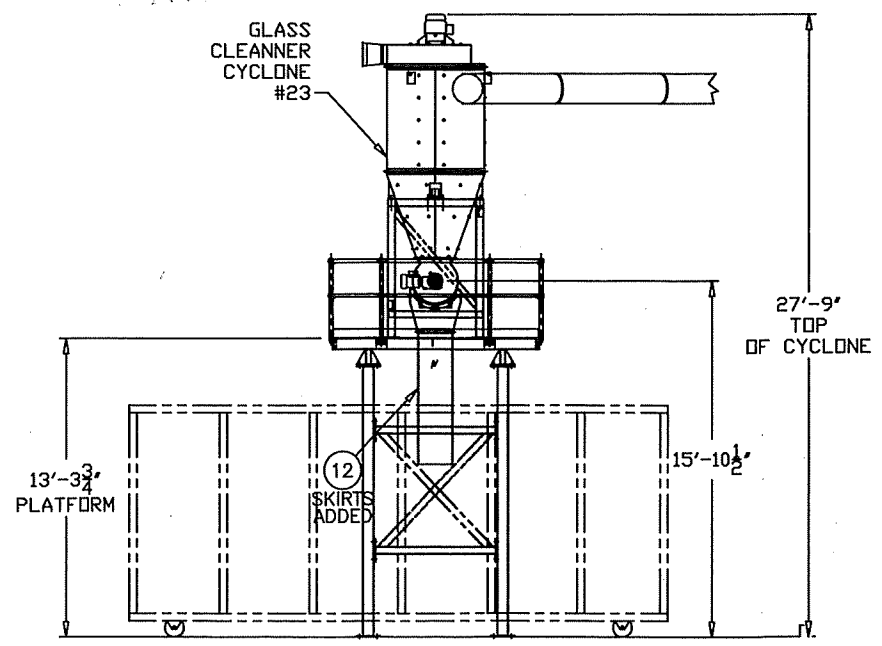
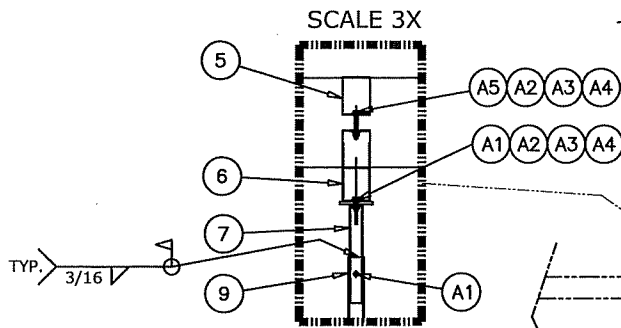
ASSEMBLY INSTRUCTIONS:

USE STANDARD SECTION P/N 5-463161 (ITEM 1) AND CUT TO DESIRED LENGTH.
BE SURE THAT CUT SECTION OF PIPE IS PLACED INTO THE IN THE DIRECTION OF AIR FLOW AS SHOWN.
FIT ASSEMBLY TO THE PROPER LENGTH REQUIRED FOR GAP TO BE CLOSED.
CLAMP INCORPORATES RUBBER O-RING AND ROLLED END FROM THE ADJ. NIPPLE FOR SEALING PURPOSES.



REV	DESCRIPTION	DATE	BY
1	P/N 3-463254 (ITEM 6) WAS 3-463243,	04/27/10	CB

ITEM	PART NUMBER	DESCRIPTION	LENGTH	WIDTH	QTY	NOTES
1	5-463161	#16 PIPE X 18 GA. GALVANIZED STL.	-	-	6	-
2	5-463163	#16 ADJUSTABLE NIPPLE W/ RUBBER O-RING	-	-	2	-
3	5-463162	#16 90° ELBOW, PIPE	-	-	1	-
4	5-463165	#16 CLAMP	-	-	10	-
5	4-463243	#16 CLAMP ROLL	-	-	2	-
6	3-463254	WELD, BASE CLAMP	-	-	2	-
7	3-463460	WELD, DUCT SUPPORT	-	-	1	-
8	3-3680-523-02	WELD, DUCT SUPPORT	-	-	1	-
9	3-1508-185	WELD, SUPPORT DUCT	-	-	1	-
10	3-3680-523-03	WELD, SUPPORT DUCT	-	-	1	-
11	3-3680-523-04	WELD, SUPPORT	-	-	1	-
12	3-3580-523-05	ASSEMBLY, SKIRTS, CYCLONE 23	-	-	1	-
A1	5-038105	5/8-11 X 1 3/4	-	-	6	HARDWARE
A2	5-001457	5/8 F/W	-	-	16	HARDWARE
A3	5-001538	5/8 S/W	-	-	8	HARDWARE
A4	5-001619	5/8-11 NUT	-	-	8	HARDWARE
A5	5-042516	5/8-11 x 5 HD8	-	-	4	HARDWARE
B1	5-038792	BOLT 5/8-11 X 4 1/4 ANCHOR	-	-	4	HARDWARE

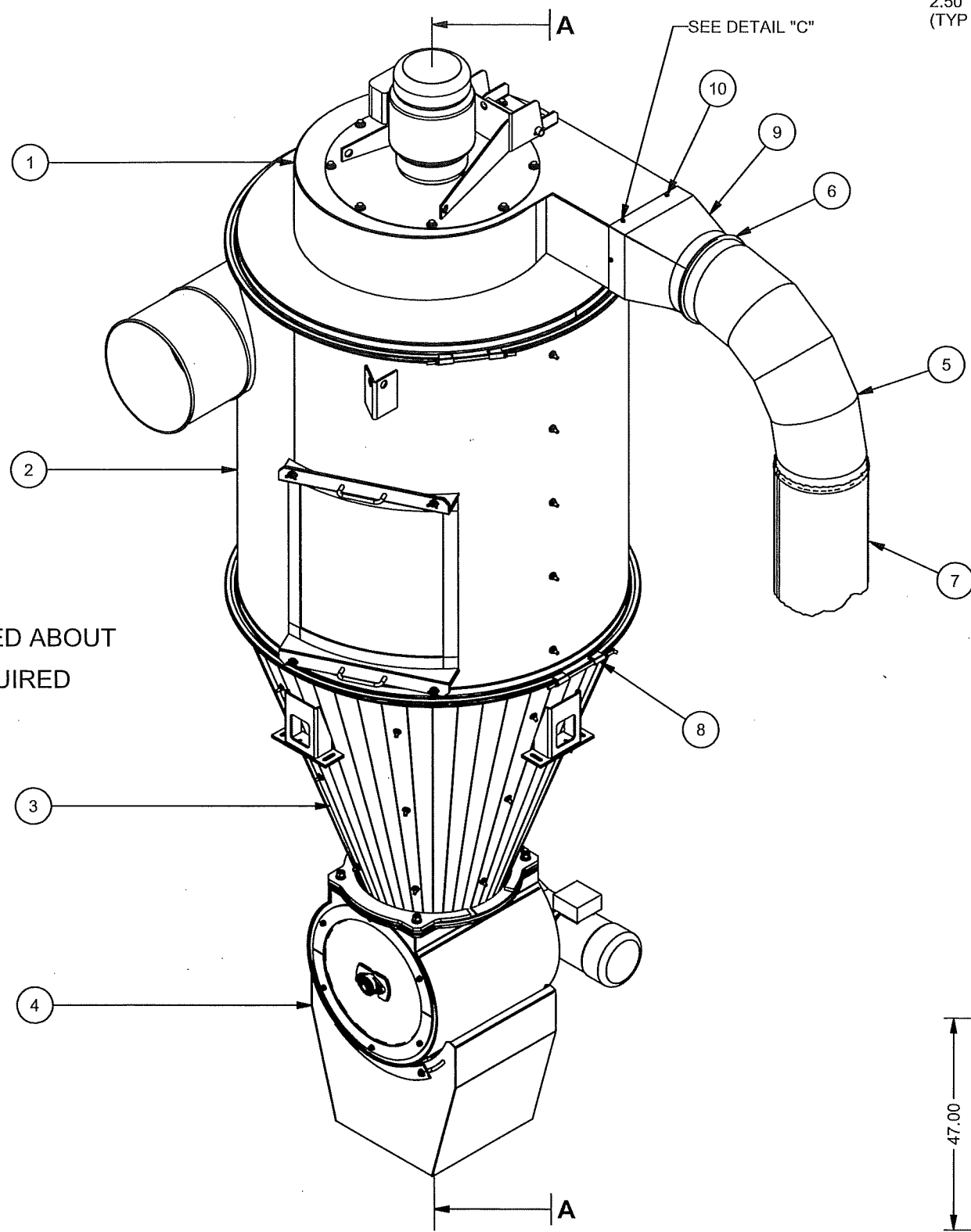


- NOTES:
1. ALL FILLET WELDS ARE 3/16" UNLESS SPECIFIED.
 2. SEE TYPICAL CUT SECTION DETAIL FOR INSTALLATION NOTES.

ITEM #523

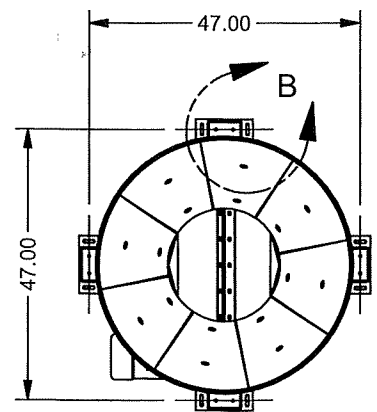
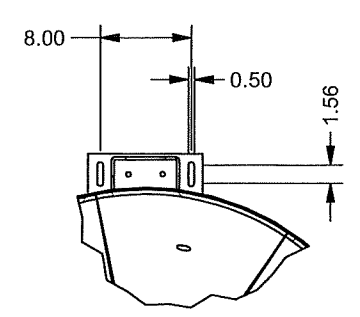
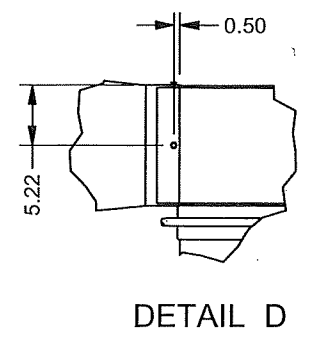
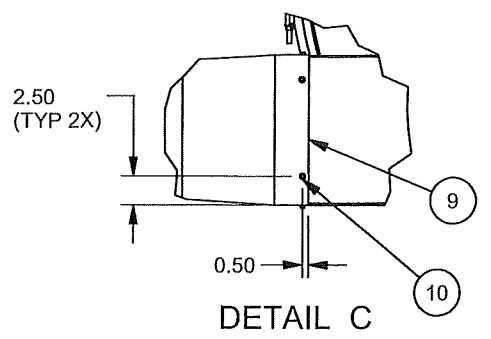
DRAWN: CB	03/26/10	CP MANUFACTURING INC. 1300 Wilson Avenue National City, CA 91950 U.S.A www.cpmfg.com Tel: (619) 477-3175 Fax: (619) 477-2215
APPROVED:		
<small>NOTES & TOLERANCES (UNLESS OTHERWISE SPECIFIED)</small> - SHEAR AND BRAKE DIMENSIONS ARE O.D. - BREAK ALL SHARP EDGES, REMOVE BURRS. FRACTION 0 X 0.0X 0.00X 0" 0 X ±1/16 ±0.1 ±0.03 ±0.001 ±1" ±0.5"		DESC: INSTALL, DUCTING, GLASS CLEANER #23
MATERIAL: SEE BOM	SIZE: B	PART NO: 3-3680-523-01
<small>STAMP: JUL 16, 2010 10:33 AM</small> <small>6 X W X 2 X M</small>		REV: 1

H:\Engineer\Active Projects\Dwgs\3680Mech\523\3-3680-523-01.dwg



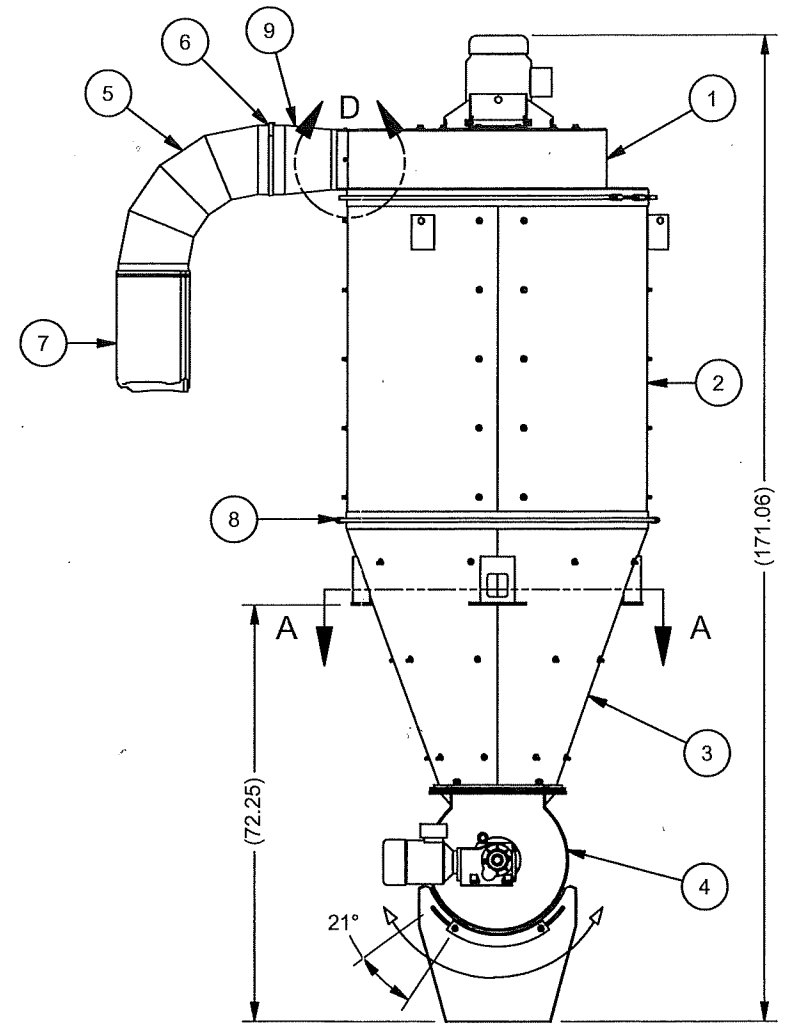
ITEMS 1, 2, 3, 4
MAY BE ROTATED ABOUT
"A" 360° AS REQUIRED

APPROXIMATE WEIGHT - 2,200 LBS



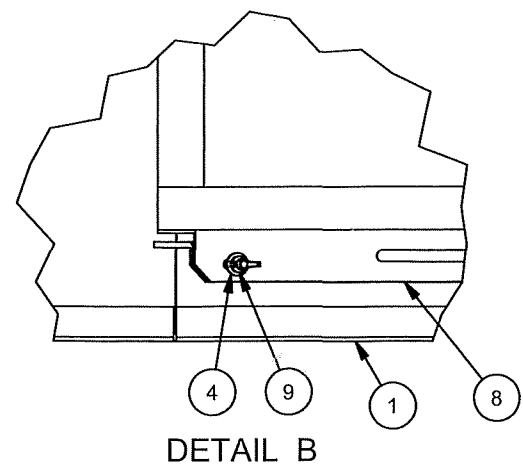
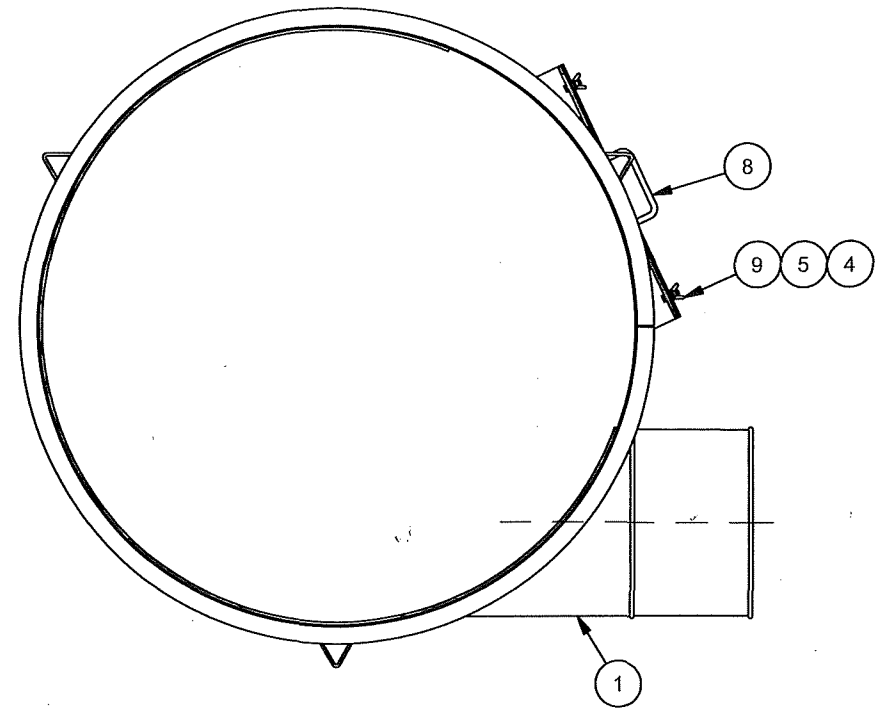
SECTION A-A

CP Parts List			
ITEM	QTY	PART NUMBER	DESCRIPTION
1	1	3-6528077	Extract Blower Assy
2	1	3-9010147	Assy, Barrel 52 Dia, Intake 16 Dia
3	1	3-9005050	Assy, Cone 52
4	1	3-9005001	Assy, Rotary Valve 24
5	1	552307	12 Inch Elbow - 90, 21012 90
6	1	5-552308	12" Clamp 26012
7	1	410213-1061	Net, 38 X 140
8	2	6463024	Ring Assembly
9	1	552305	SQ-RND Adapter, 12 Dia
10	4	5-022810	1-4x3-4 Hextek

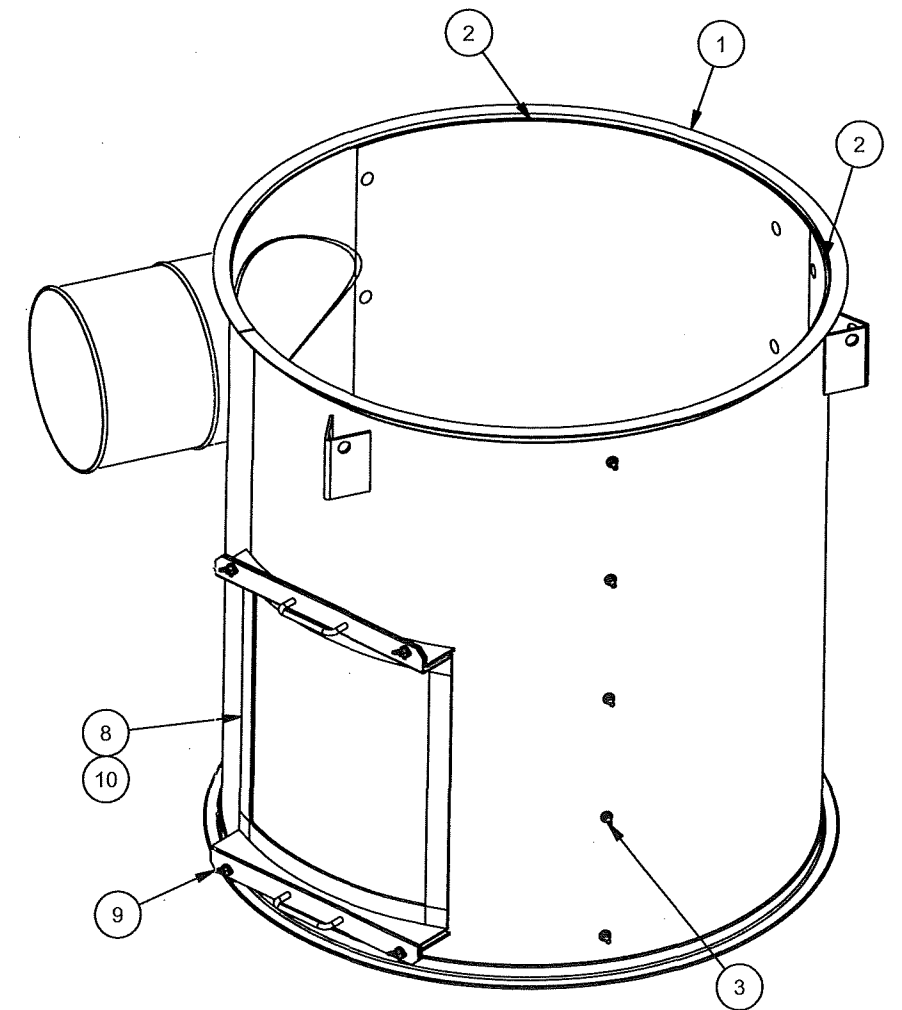
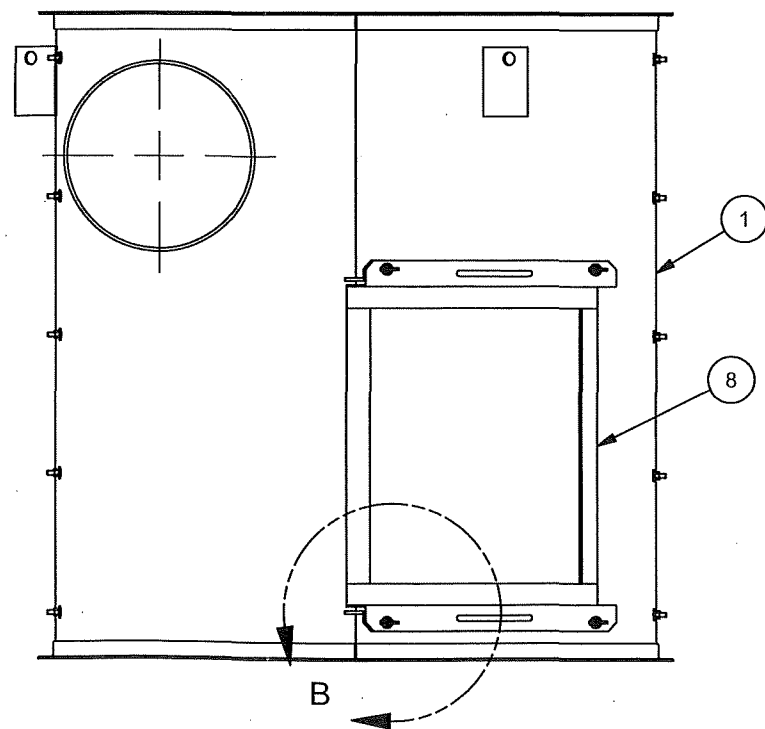
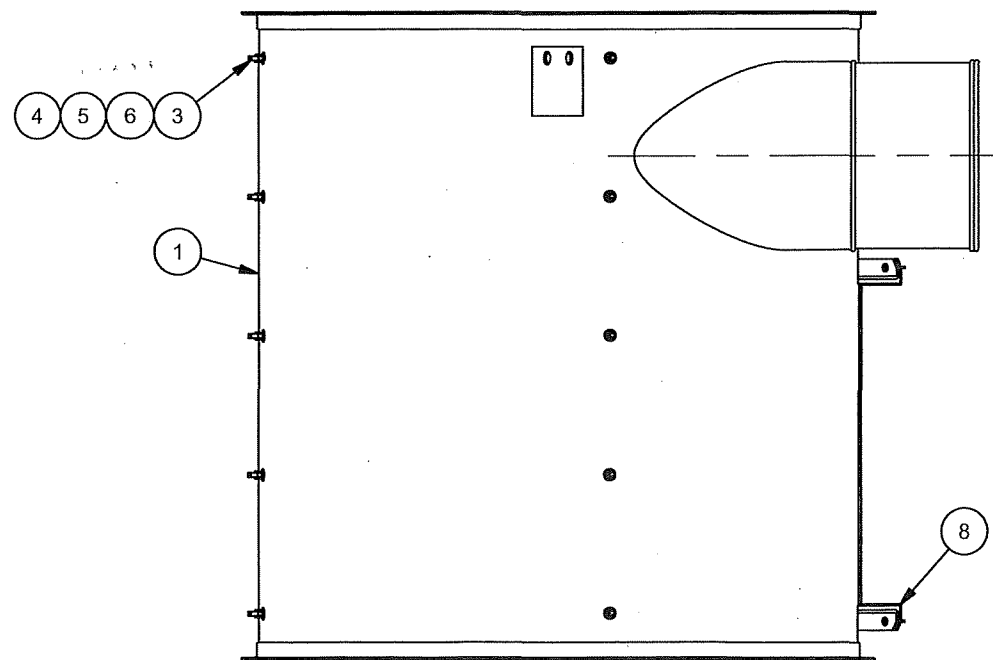


DRAWN	JimW	7/5/2005	CP MANUFACTURING INC. 1300 Wilson Avenue National City, CA 91950 U.S.A www.cpmfg.com Tel: (619) 477-3175 Fax: (619) 477-2215
APPROVED			
NOTES & TOLERANCES (UNLESS OTHERWISE SPECIFIED)			DESC Assy, Cyclone 52 Dia, Intake 16 Dia & Valve 24 Dia
- SHEAR AND BRAKE DIMENSIONS ARE O.D. - BREAK ALL SHARP EDGES, REMOVE BURRS.			
FRACTION 0.X 0.0X 0.00X 0' 0.X'			SIZE B
MATERIAL			PART NO 3-9010148
S W F M			REV

H:\Engineer\RD 2\Machines 2\Glass Cleaner 2\9010\Inventor\Glass Cleaner Upgrade\3-9010148.dwg



CP Parts List				
ITEM	QTY	PART NUMBER	DESCRIPTION	
1	1	3-9010146	Weld, Barre 52 Dial, LH, Intake	
2	2	9010071	Panel, Anti-Wear	
3	20	5-001089	Elevator Bolt, 3_8 X 1-1_2	
4	28	5-001422	Flat Washer - 3/8	
5	24	5-001503	Slotted Washer - 3_8	
6	20	5-001570	Hex Nut - 3/8 - 16	
7	1	5-050801	Construction Adhesive	
8	1	3-9010140	Weld, Door, Cyclone 52	
9	4	5-001708	Nut, Wing - 3_8 - 16.ipt	
10	1	5-050816	Soft Adhesive Strip 1/2" Thk x 1" Width, Cut to 8'-8"Lg (Mc Master #93625K69, 50Ft)	



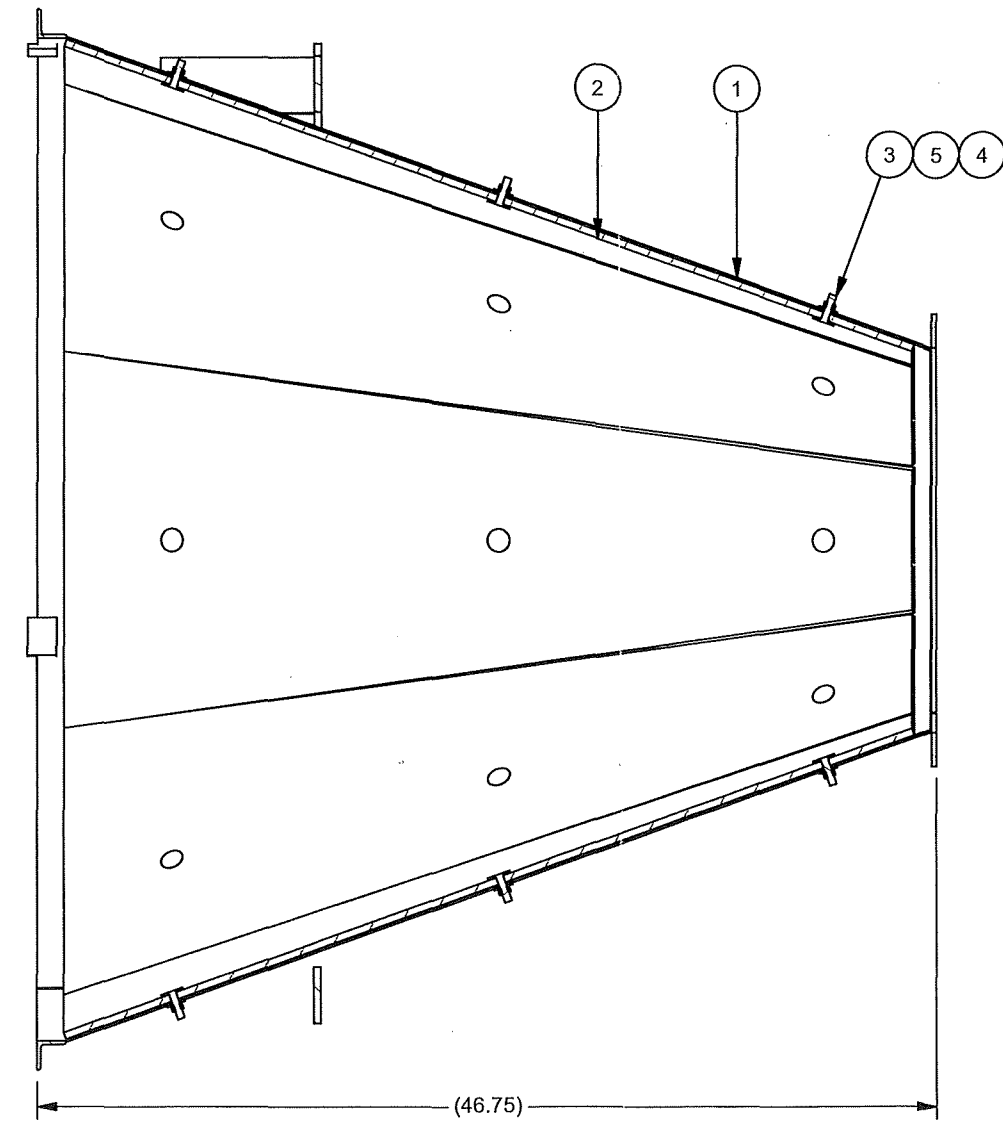
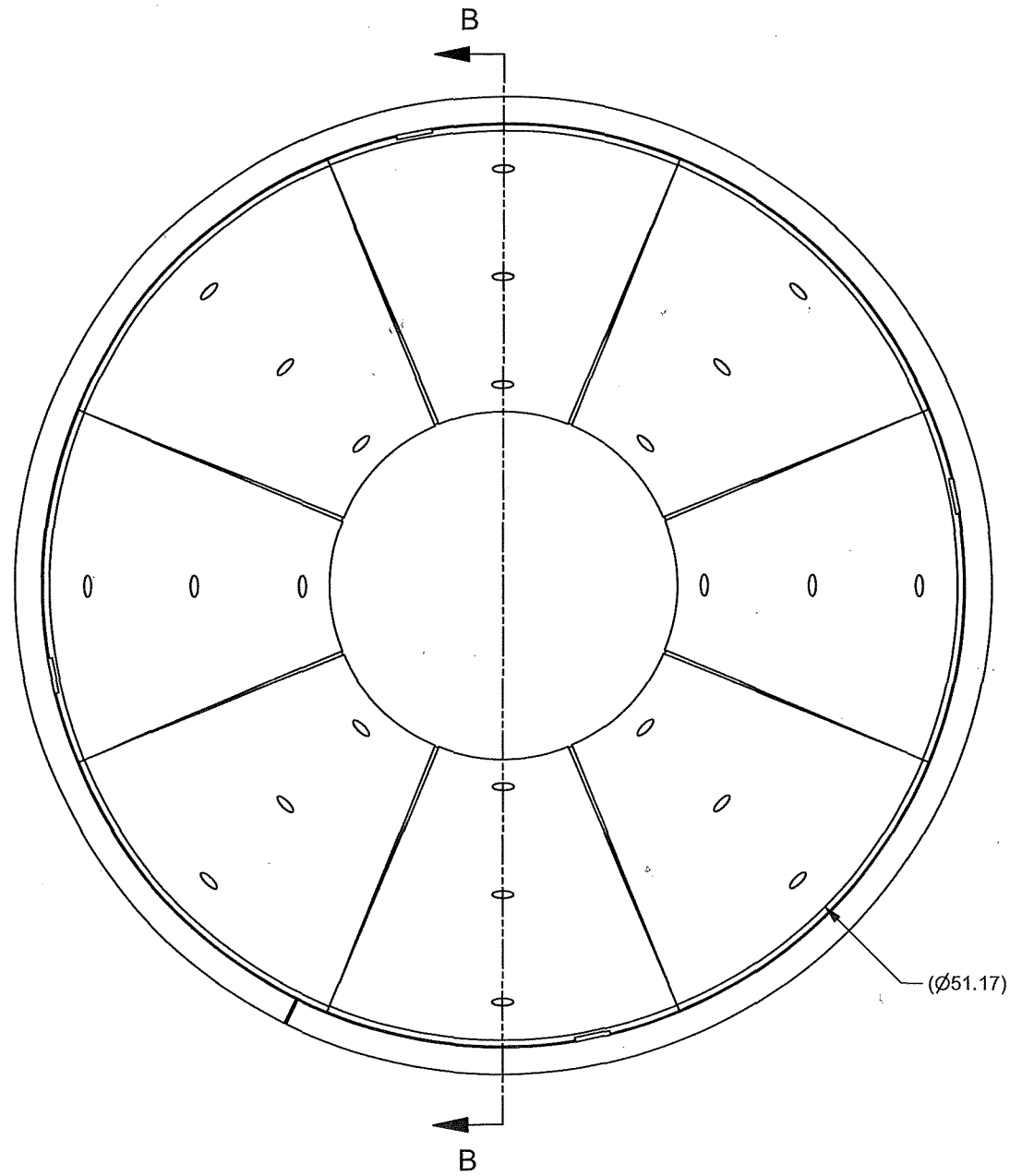
Weight - N/A

The technical and other information disclosed herein is confidential and proprietary to CP Manufacturing, Inc. Reproduction of this document and/or disclosure of the information and/or use of the information is strictly prohibited without the prior written consent of an authorized agent of CP Manufacturing, Inc.

DRAWN	JimW	6/9/2008	CP MANUFACTURING INC.	
APPROVED			1300 Wilson Avenue National City, CA 91950 U.S.A	
NOTES & TOLERANCES (UNLESS OTHERWISE SPECIFIED)			www.cpmfg.com Tel: (619) 477-3175 Fax: (619) 477-2215	
- SHEAR AND BRAKE DIMENSIONS ARE O.D.			DESC	
- BREAK ALL SHARP EDGES, REMOVE BURRS.			Assy, Barrel 52 Dia, Intake 16 Dia	
FRACTION 0.X 0.0X 0.00X 0' 0.X'			SIZE	SHT
±0.06 ±0.1 ±0.03 ±0.01 ±1' ±0.5'			B	1 of 1
MATERIAL			PART NO	REV
MATERIAL No			3-9010147	
S W P M			H:\Engineer\R&D 2\Machines 2\Glass Cleaner 2\9010\Inventor\Glass Cleaner Upgrade\3-9010147.dwg	

REV	DESCRIPTION	DATE	BY
1	CHANGED PICTORIALY	2/21/06	ME

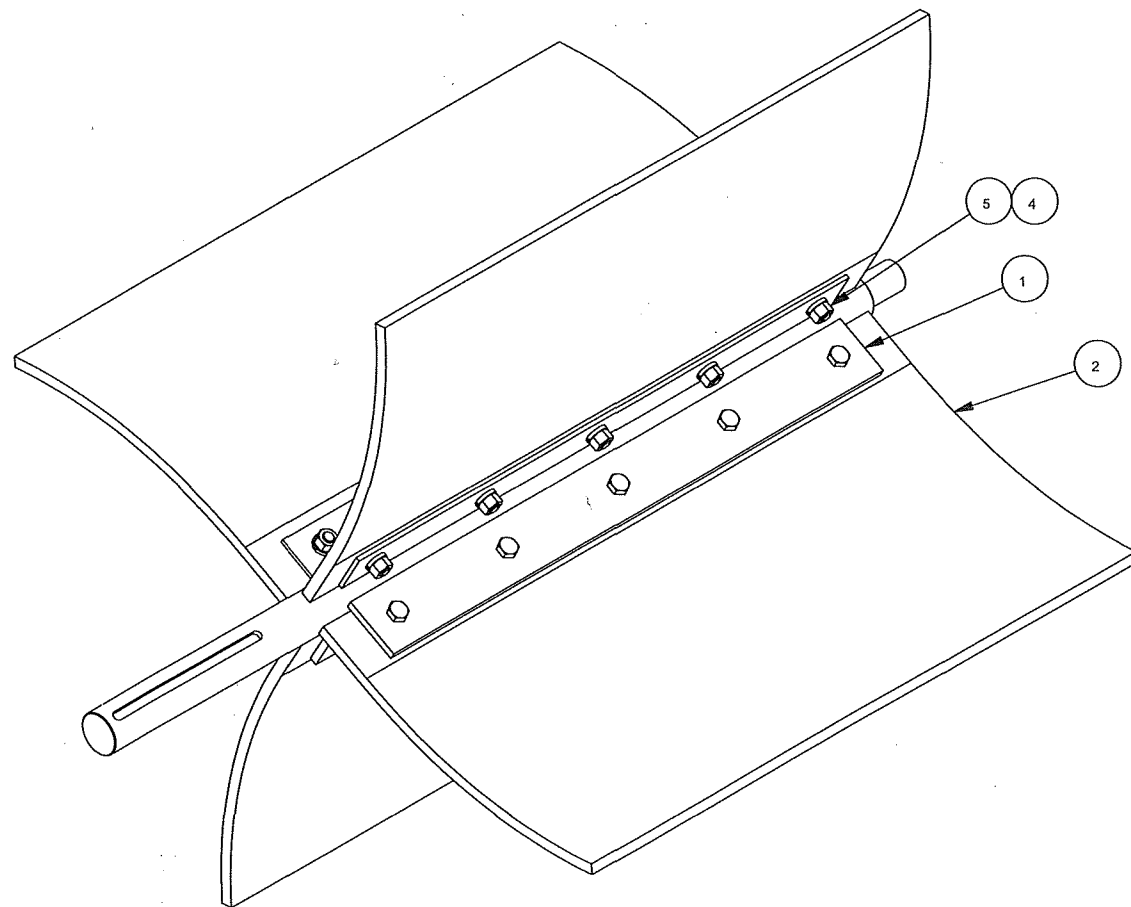
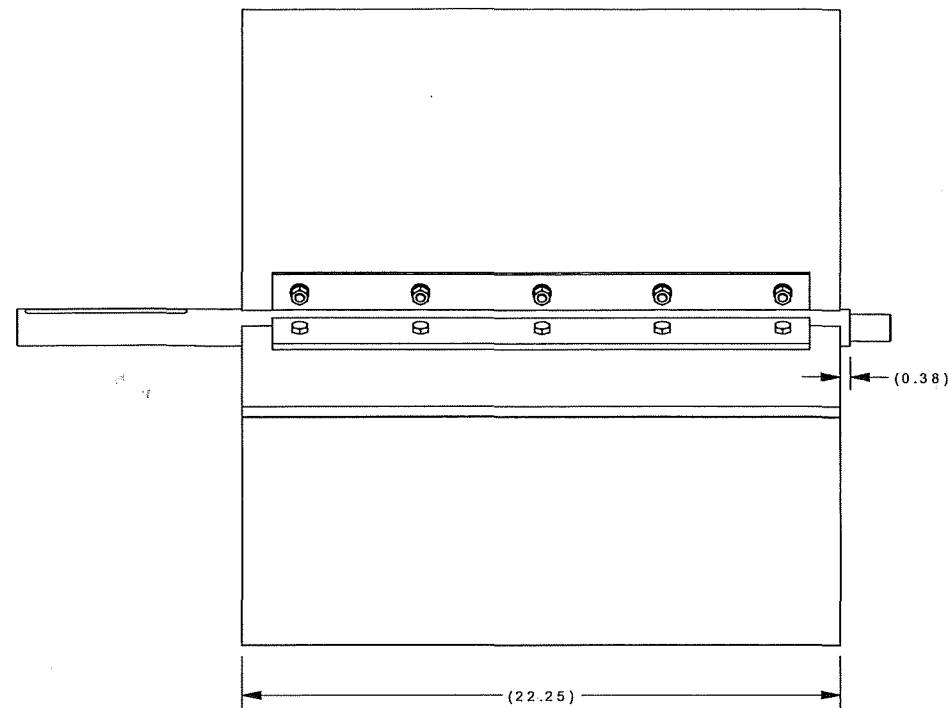
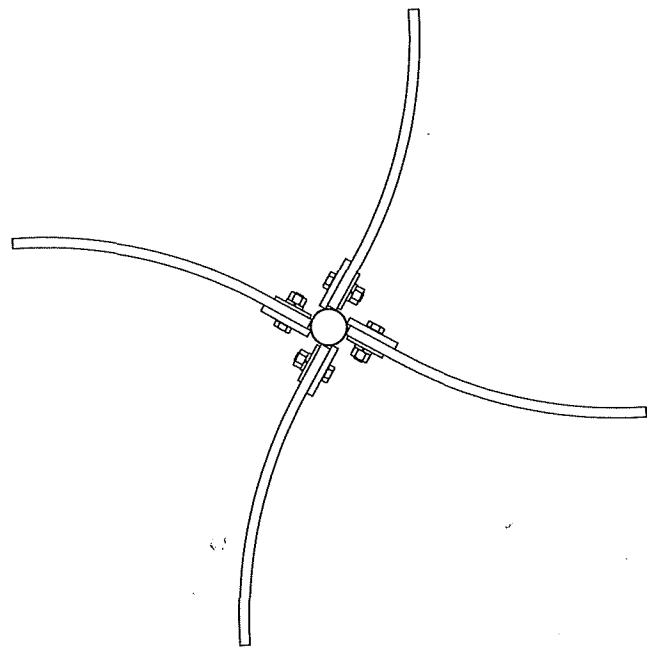
CP Parts List			
ITEM	QTY	PART NUMBER	DESCRIPTION
1	1	3-9005054	Weld, Cone
2	8	9005061	Panel, Hardliner
3	24	5-001165	Elevator Bolt, 3/8-16 X 1 1/2
4	24	5-001570	Hex Nut - 3/8 - 16
5	24	5-001422	Flat Washer - 3/8



SECTION B-B

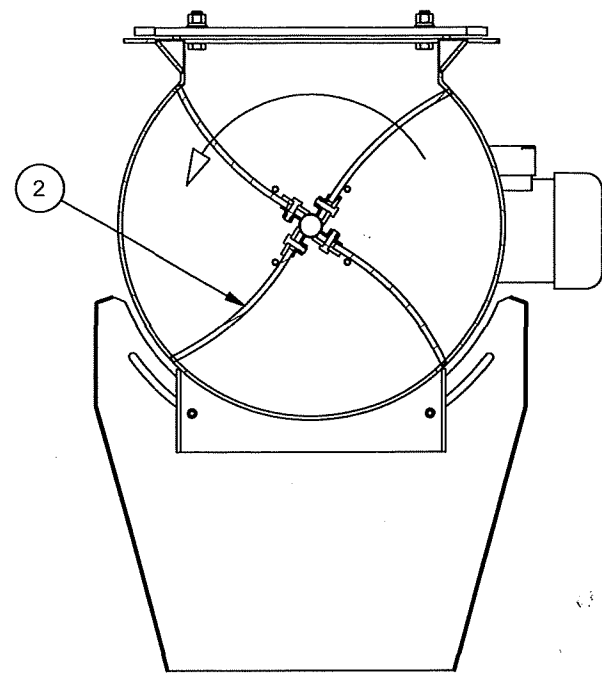
APPROX 320 LBS US

DRAWN	Jim W	3/15/2005	CP MANUFACTURING INC. 1300 Wilson Avenue National City, CA 91950 U.S.A www.cpmfg.com Tel: (619) 477-3175 Fax: (619) 477-2215
APPROVED			
NOTES & TOLERANCES (UNLESS OTHERWISE SPECIFIED) - SHEAR AND BRAKE DIMENSIONS ARE O.D. - BREAK ALL SHARP EDGES, REMOVE BURRS.			DESC
FRACTION 0.X 0.0X 0.00X 0' 0.X' ±0.06 ±0.1 ±0.03 ±0.01 ±1' ±0.5'			Assy, Cone 52 SIZE B PART NO 3-9005050 REV 1
MATERIAL			H:\Engineer\R&D 2\Machines 2\Glass Cleaner 2\9005\9005\Inventor\9005050.dwg

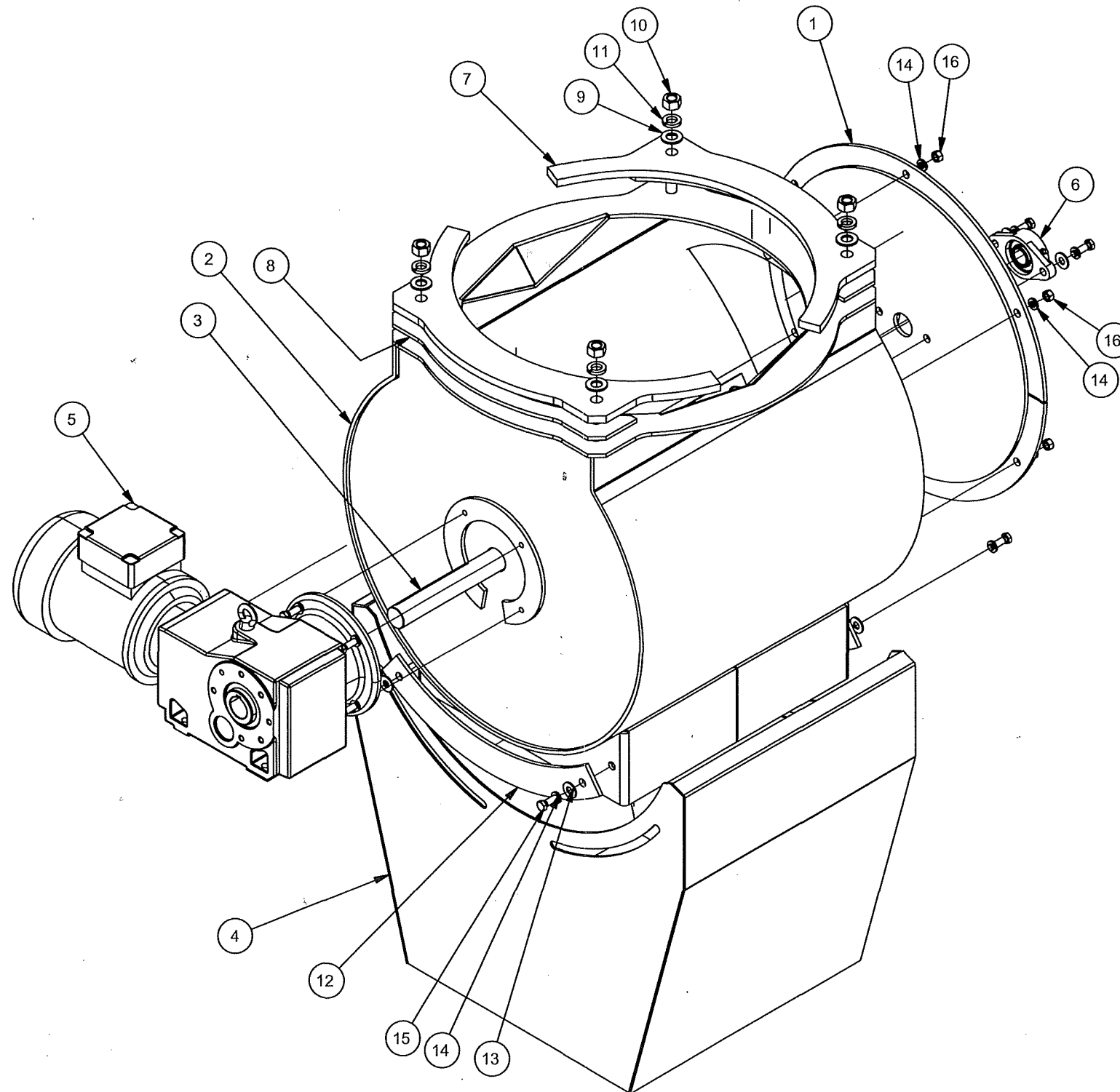
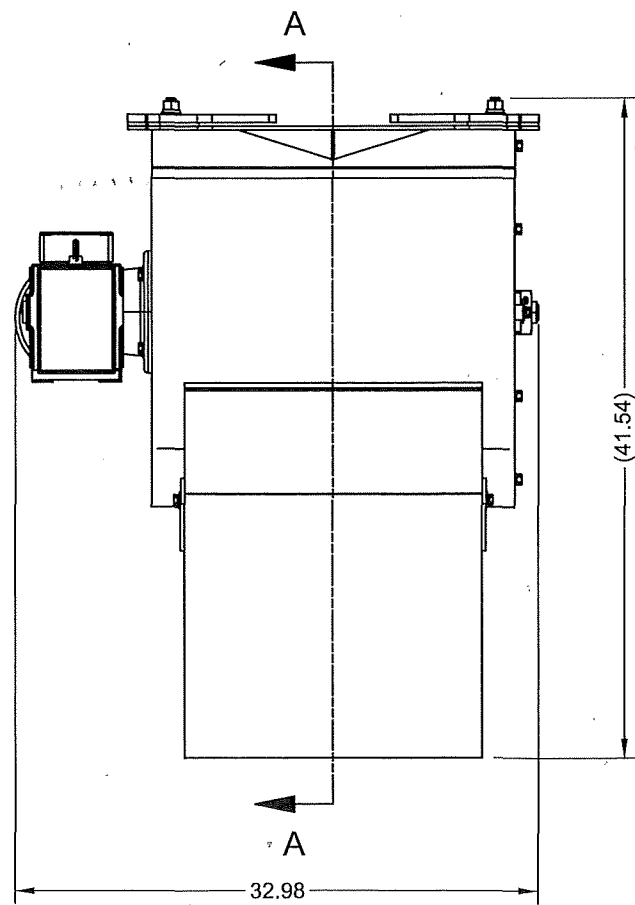


CP Parts List			
ITEM	QTY	PART NUMBER	DESCRIPTION
1	1	9005012	Weld, Rotor 24
2	4	9005035	Plate, Vane
3	4	9005014	Panel, Clamp
4	20	5-001503	Slotted Washer - 3_8
5	20	5-001570	Hex Nut - 3/8 - 16

DRAWN Jim W : 2/16/2005 APPROVED NOTES & TOLERANCES UNLESS OTHERWISE SPECIFIED: - SHEAR AND BRAKE DIMENSIONS ARE O.D. - BREAK ALL SHARP EDGES, REMOVE BURRS. FRACTION 0.X 0.0X 0.00X 0" 0.X" DECIMAL ±0.1 ±0.03 ±0.01 ±1' ±0.01'	CP MANUFACTURING INC. 1300 Wilson Avenue National City, CA 91950 U.S.A www.cpmfg.com Tel: (619) 477-3175 Fax: (619) 477-2215
MATERIAL S W P M	SIZE B PART NO 9005013 REV H:\Engineering\RD 2\Mech\35 2\G1544 Cleaner 2\Rotor Valve_Cylinder\9005013\9005013.dwg



SECTION A-A

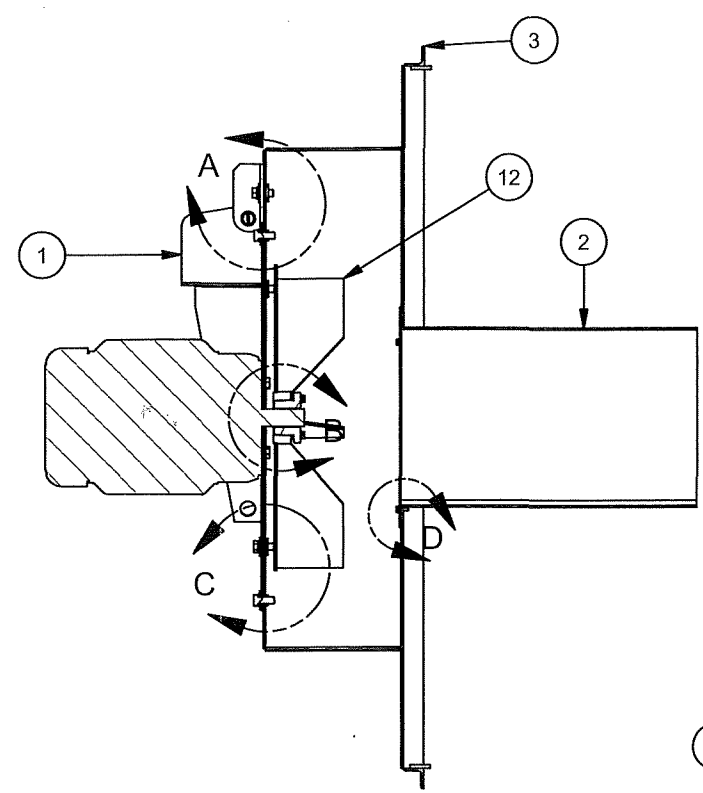
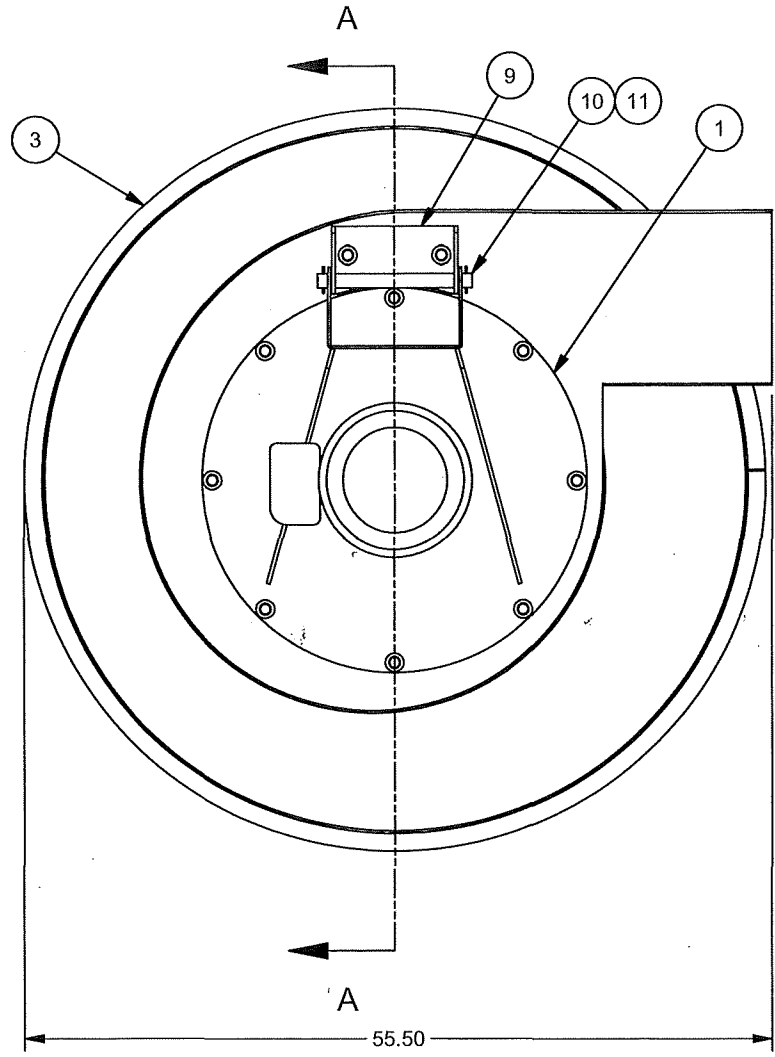


CP Parts List

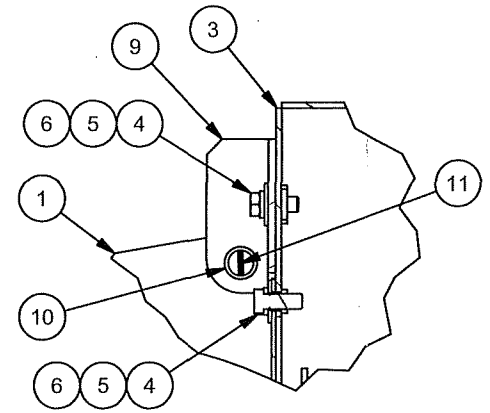
ITEM	QTY	PART NUMBER	DESCRIPTION
1	1	9005032	Weld, Door
2	1	9005011	Weld, Valve 24
3	1	9005013	Assy, Rotor
4	1	9005018	Weld, Guard, Discharge
5	1	551476	Gear Motor 1.5 HP
6	1	5-010332	2 Bolt Flange Bearing X 1
7	2	9005025	Plate, Clamp
8	2	9005024	Panel, Shim
9	4	5-001457	Flat Washer - 5_8
10	4	5-001619	Hex Nut - 5_8-11
11	4	5-001538	Slotted Washer - 5_8
12	2	9005019	Panel, Swing
13	6	5-001422	Flat Washer - 3/8
14	16	5-001503	Slotted Washer - 3_8
15	10	5-001155	Hex Head Bolt - 3/8 - 16 - 1 1/4
16	6	5-001570	Hex Nut - 3/8 - 16

APPROXIMATE WEIGHT 275 LBS (125 KG)
 1.5 HP - NO VFD
 APROX TRANSFER CAPACITY - 18,225 CUBIC FEET (674 CUBIC YARDS)/ MIN.

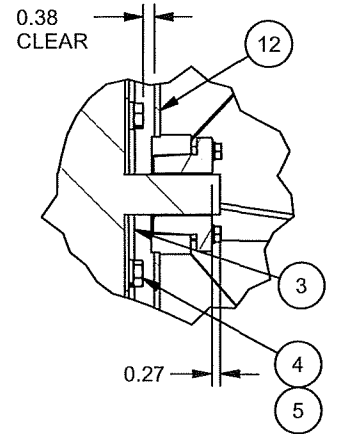
DRAWN	Jim W	2/19/2005	CP MANUFACTURING INC. 1300 Wilson Avenue National City, CA 91950 U.S.A www.cpmfg.com Tel: (619) 477-3175 Fax: (619) 477-2215	
APPROVED				
NOTES & TOLERANCES (UNLESS OTHERWISE SPECIFIED)			DESC	
- SHEAR AND BRAKE DIMENSIONS ARE O.D.			Assy, Rotary Valve 24	
- BREAK ALL SHARP EDGES, REMOVE BURRS.				
FRACTION 0.X 0.0X 0.00X 0' 0.X'				
±0.06 ±0.1 ±0.03 ±0.01 ±1' ±0.5			MATERIAL	
SIZE B			PART NO 9005001	
S W P M			REV	
H:\Engineer\R&D 2\Machines 2\Glass Cleaner 2\Rotary Valve_Cyclone\9005\Auto Cad\Layout\9005001.dwg				



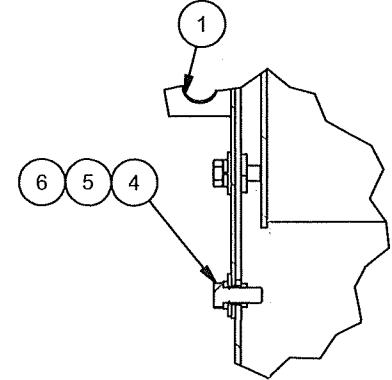
SECTION A-A



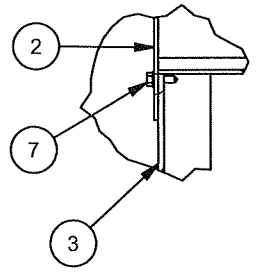
DETAIL A



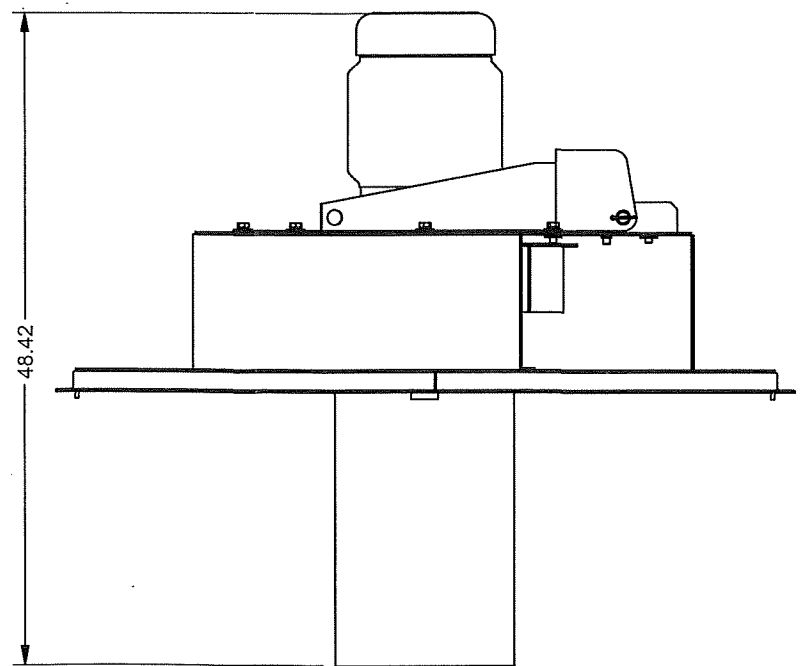
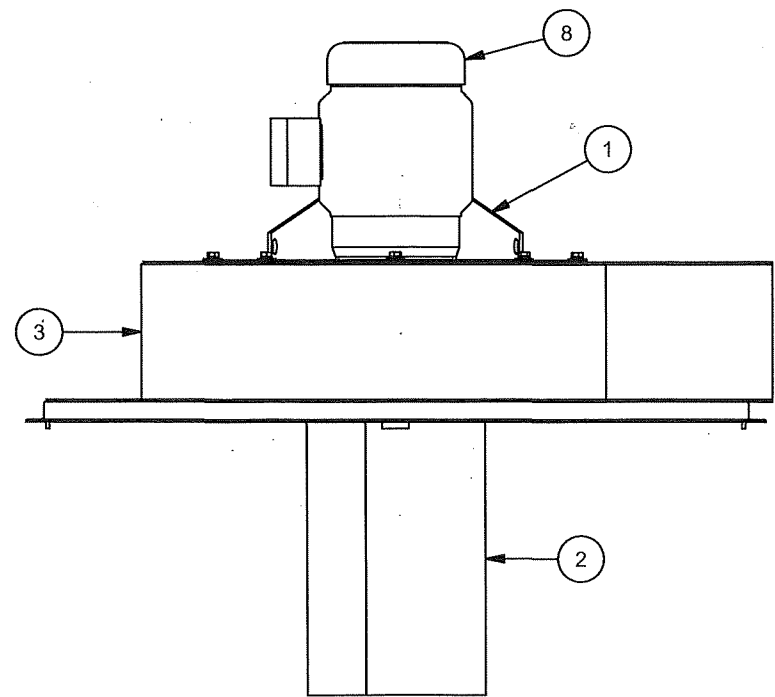
DETAIL B



DETAIL C



DETAIL D



REV	DESCRIPTION	DATE	BY
A	PART # 5-050650 WAS 5-030285, SHT SIZE WAS "A"	3/8/05	JW
2	ITEM P/N 4-9010084 WAS P/N 6528070 & ADDED ITEM P/N's 4-9010085 & 5-001784	2/22/06	ME
3	ITEM P/N 7-6528094 WAS 3-6528068	7/06/07	ME

CP Parts List			
ITEM	QTY	PART NUMBER	DESCRIPTION
1	1	6528073	Weld, Motor Base, Blower
2	1	6528057	Weld Tube, Intake
3	1	3-6528064	Weldment, Cyclone, Top
4	14	5-044699	Hex Head Bolt - 1_2 - 13 - 1_1_4
5	14	5-001511	Slotted Washer - 1/2
6	10	5-001430	Flat Washer - 1/2
7	3	5-022810	1-4x3-4 Hextek
8	1	5-050650	10 HP Prem Eff Motor - C-Face, 460 VOLT
9	1	4-9010084	Bracket
10	1	4-9010085	Pipe, Hinge
11	2	5-001784	CotterPin, Straight, 0.156x1.5
12	1	7-6528094	Blade, Balance

DRAWN	Marceloe	1/24/2004	CP MANUFACTURING INC!	
APPROVED			1300 Wilson Avenue	
NOTES & TOLERANCES (UNLESS OTHERWISE SPECIFIED)			National City, CA 91950 U.S.A	
- SHEAR AND BRAKE DIMENSIONS ARE O.D.			www.cpmfg.com Tel: (619) 477-3175 Fax: (619) 477-2215	
- BREAK ALL SHARP EDGES, REMOVE BURRS.			DESC	
FRACTION 0.X 0.X' 0.00X 0' 0.X'			Extract Blower Assy	
±0.06 ±0.1 ±0.03 ±0.01 ±1' ±0.5'			SIZE B PART NO	
MATERIAL			3-6528077	
S	W	P	M	REV 3
H:\Engineer\R&D\Machines\Glass Cleaner\Cyclone\6528070\Inventor\6528077.dwg				