



**Procurement Management Department**  
**2115 Second Street, 1<sup>st</sup> Floor**  
**Fort Myers, FL 33901**  
**Main Line: (239) 533-8881**  
**Fax Line: (239) 485-8383**  
[www.leegov.com/procurement](http://www.leegov.com/procurement)

**Posted Date:** June 8, 2023

**Solicitation No.:** RFP230341JJB

**Solicitation Name:** Glass Recovery Cyclone Retrofit

**Subject:** Addendum Number 1

The following represents clarification, additions, deletions, and/or modifications to the above referenced bid. This addendum shall hereafter be regarded as part of the solicitation. Items not referenced herein remain unchanged, including the response date. Words, phrases or sentences with a strikethrough represent deletions to the original solicitation. Underlined words and bolded, phrases or sentences represent additions to the original solicitation.

**1. ATTACHMENT: Drawings of the fines trommel**

**2. QUESTIONS/ANSWERS**

1.	<p>Are there any drawings of the fines trommel after the cyclone that can be shared?</p> <p>Just wanted to clarify on my below request: we aren't needing internal schematics of the trommel, just general profile drawings of the installation for that retrofit</p>
<b>Answer</b>	<b>Please see the attached drawings.</b>

**BIDDER/PROPOSER IS ADVISED, YOU ARE REQUIRED TO ACKNOWLEDGE RECEIPT OF THIS ADDENDUM WHEN SUBMITTING A BID/PROPOSAL. FAILURE TO COMPLY WITH THIS REQUIREMENT MAY RESULT IN THE BIDDER/PROPOSER BEING CONSIDERED NON-RESPONSIVE.**

**ALL OTHER TERMS AND CONDITIONS OF THE SOLICITATION DOCUMENTS ARE AND SHALL REMAIN THE SAME.**

*Jake Bond*

Jake Bond  
 Procurement Analyst Direct Line: 239-533-8898  
 Lee County Procurement Management

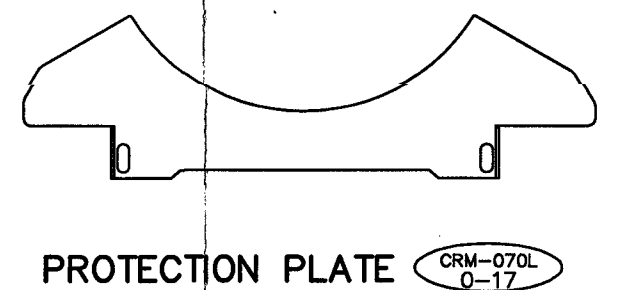
24426  
CRM-070L  
T-1

ID No	QTY	DESCRIPTION	PRODUCT CODE	WT LBS	REV
0-16	1	CHUTE D'ALIMENTATION A SODEG	CRM-617D-16	436	0
0-18	1	SUPPORT POUR TROMMEL	CRM-510D-2	109	0
0-17	1	GARDE PROTECTION DES ROUES	CRM-508D-2	76	0
0-18	1	SYSTEME DE HUIPAGE	CRM-098D-17	3	0
0-19	1	ENSEMBLE DE TRANSPORT	CRM-644D-1	32	0
ENS-2	1	COMPLETE TROMMEL			
ENS-3	1	OILERS ASSEMBLY			

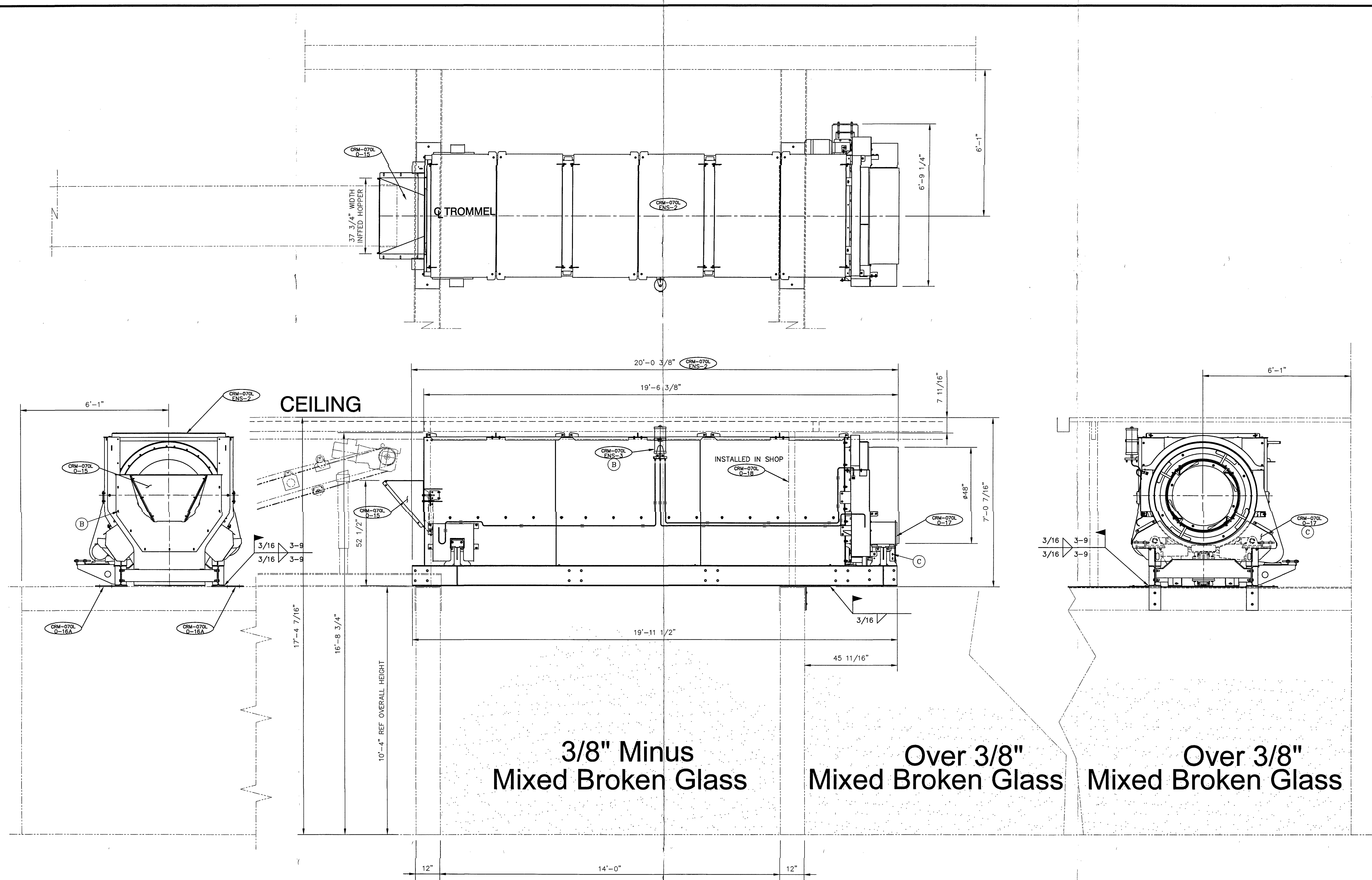
24426  
SUP-166L

ID No	QTY	DESCRIPTION	PRODUCT CODE	WT LBS	REV
0-7	1	BOULONS D'INSTALLATION	SUP-B-INST-00027B		0

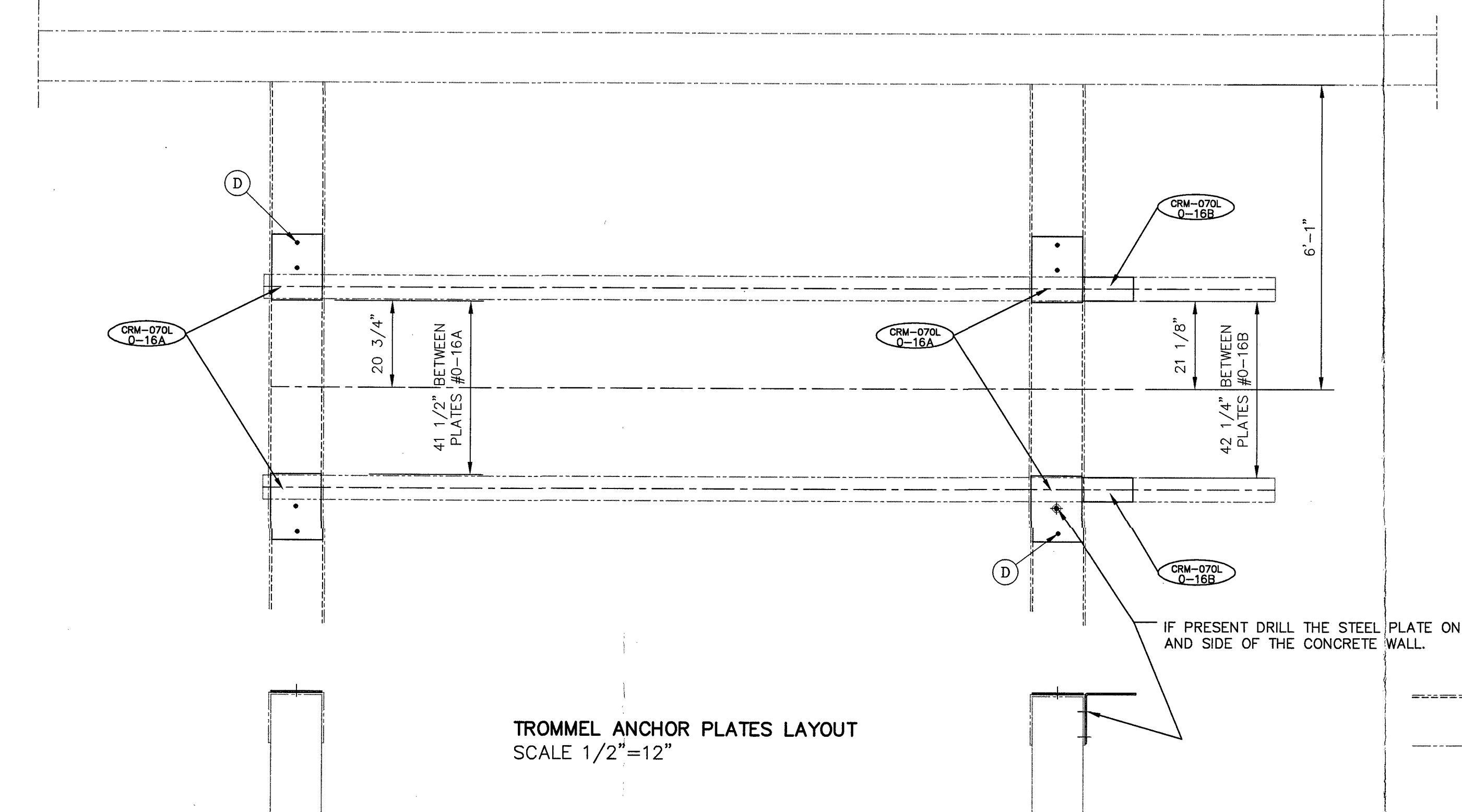
INSTALL IN SHOP



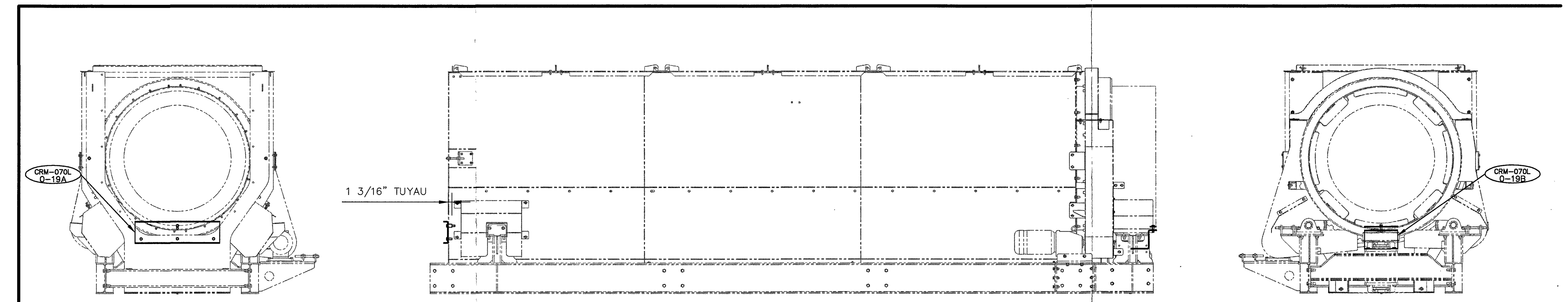
PROTECTION PLATE CRM-07L  
0-17



3/8" Minus Mixed Broken Glass  
Over 3/8" Mixed Broken Glass  
Over 3/8" Mixed Broken Glass



TROMMEL ANCHOR PLATES LAYOUT  
SCALE 1/2"=12"



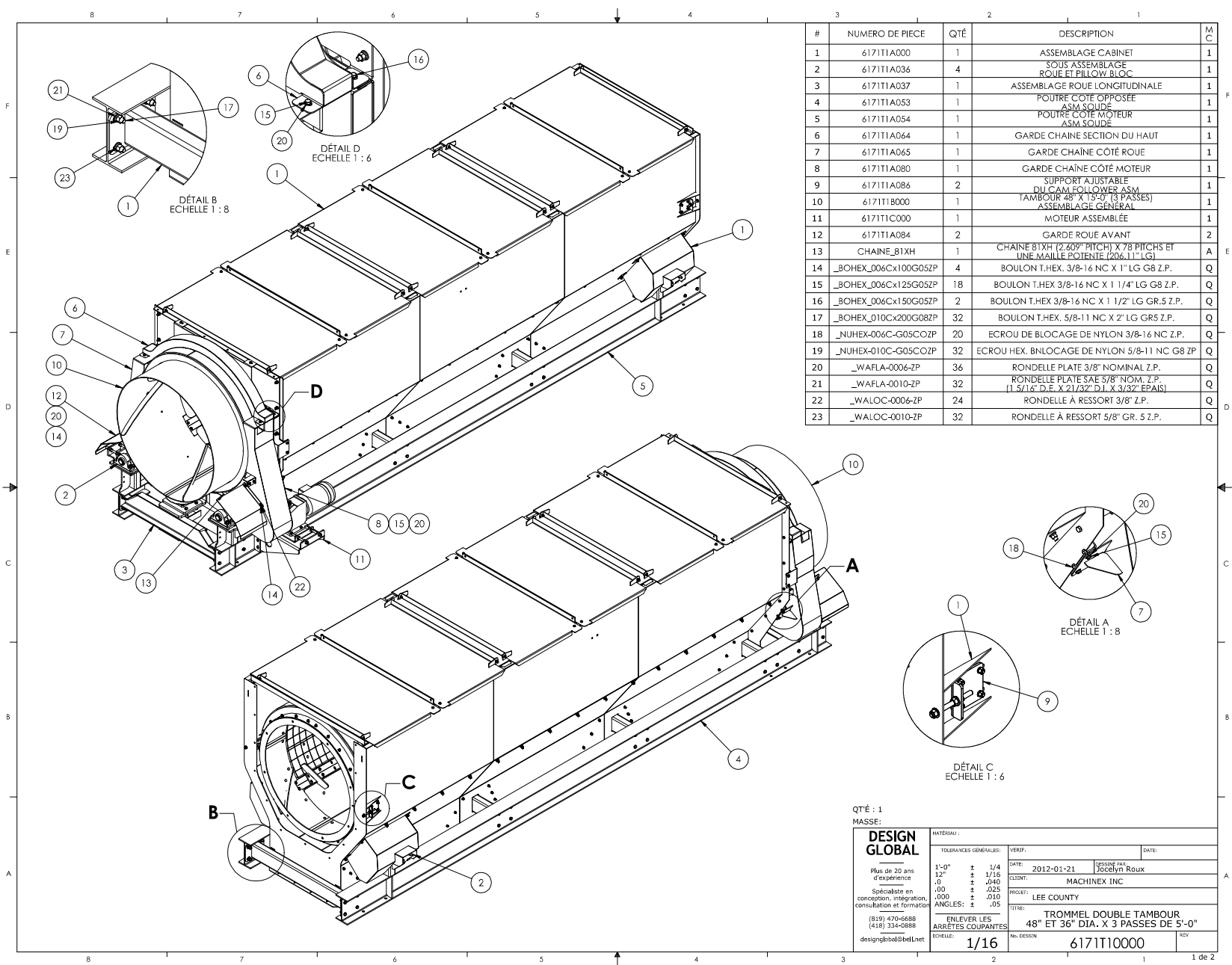
SHIPPING BRACKETS INSTALLATION  
TO BE INSTALLED IN SHOP  
SCALE 1/2"=12"

REMOVE THESE BRACKETS IN FIELD AFTER INSTALLATION  
OF THE TROMMEL IN HIS FINAL POSITION

24426  
SUP-166L  
INSTALLATION BOLTS  
0-7

D	12	ANCHOR BOLT, 5/8"-11 NC X 4 1/4" LG.	BORWA-010C404-RH-TR
C	4	HEX BOLT 7/16-14NC X 1 1/2"	BOHEX-007C108-G05
B	19	HEX BOLT 3/8-16NC X 1 1/4" ZP	BOHEX-006C104-G05ZP
A	2	HEX BOLT 3/8-16NC X 1" ZP	BOHEX-006C100-G05ZP

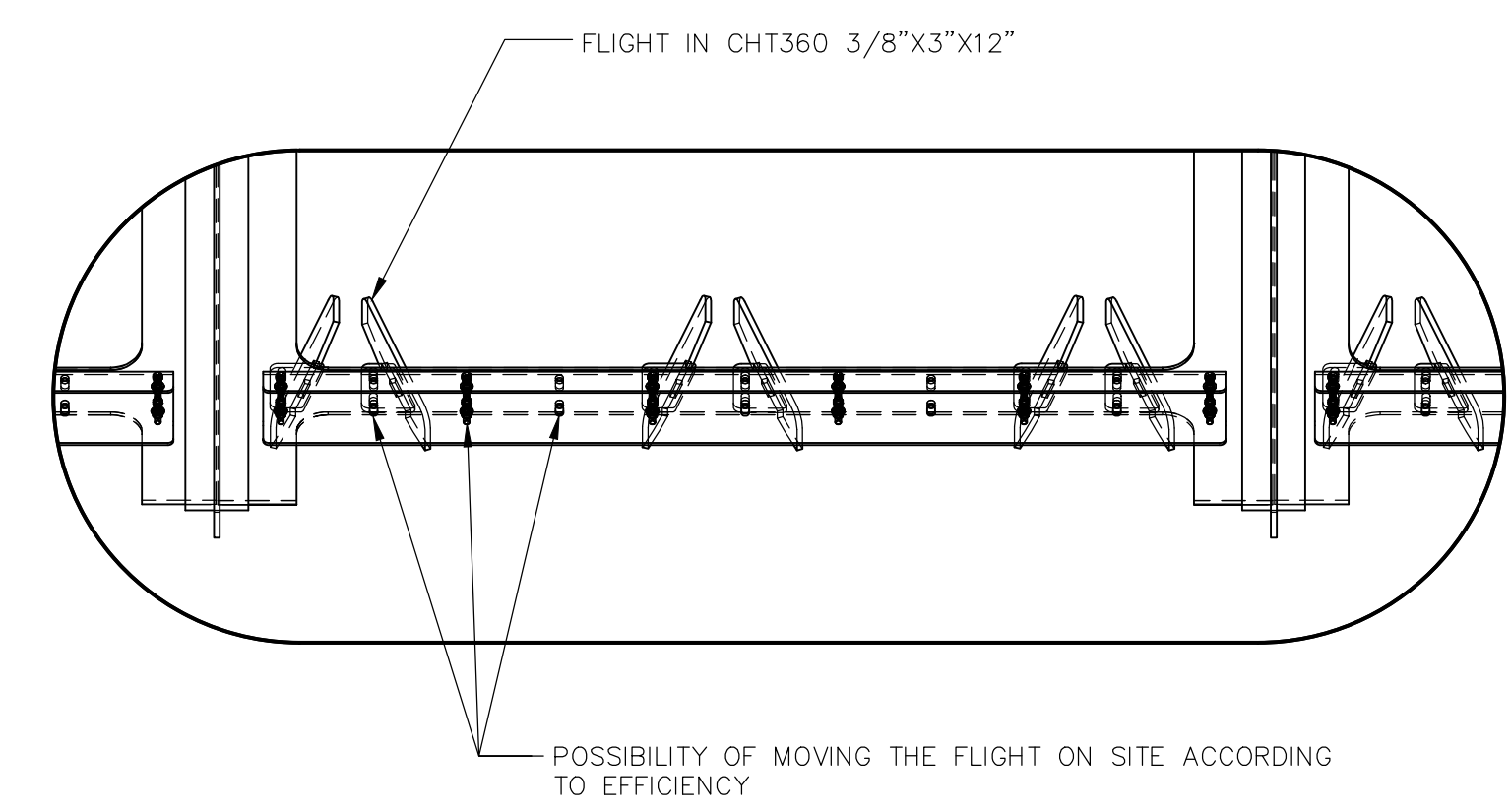
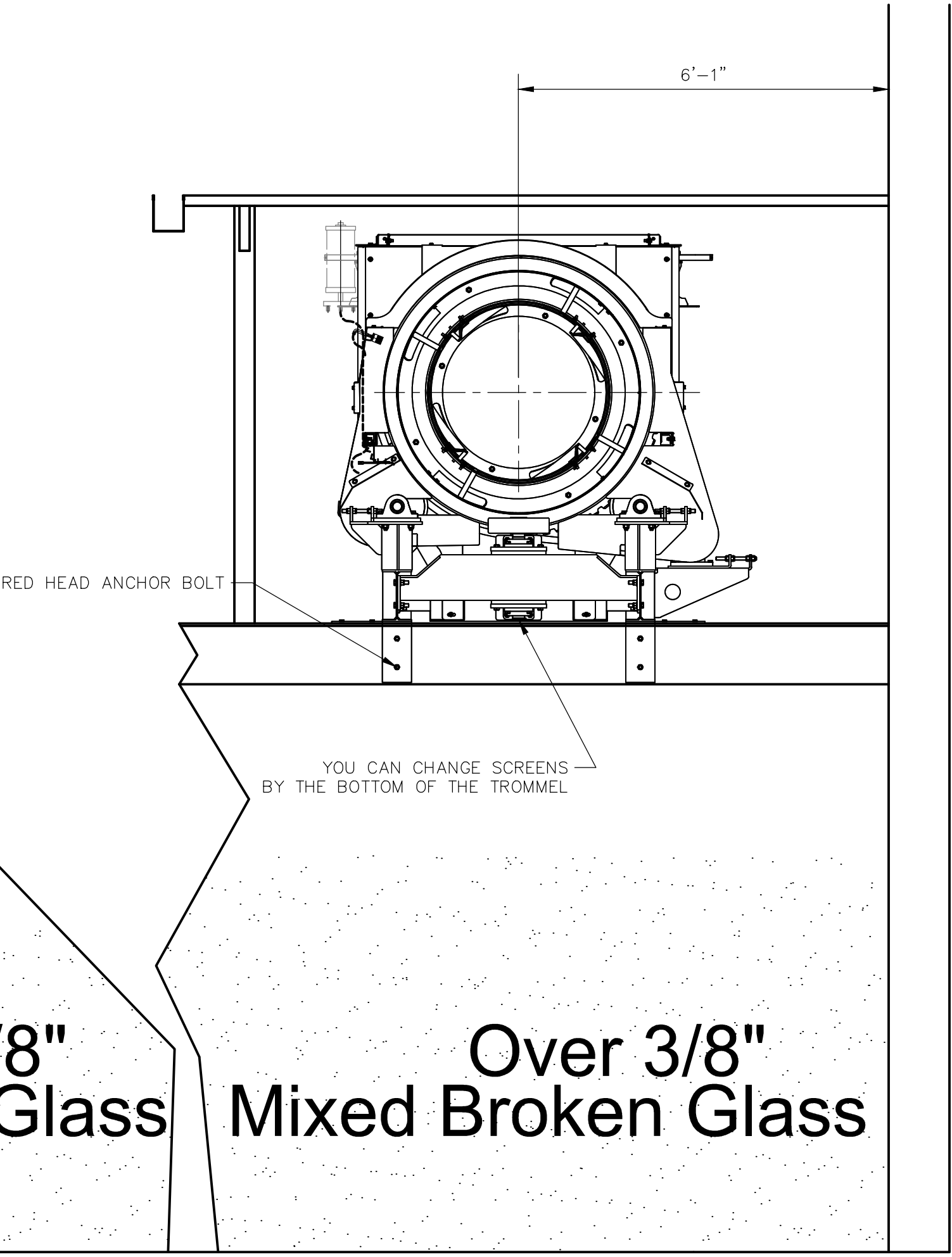
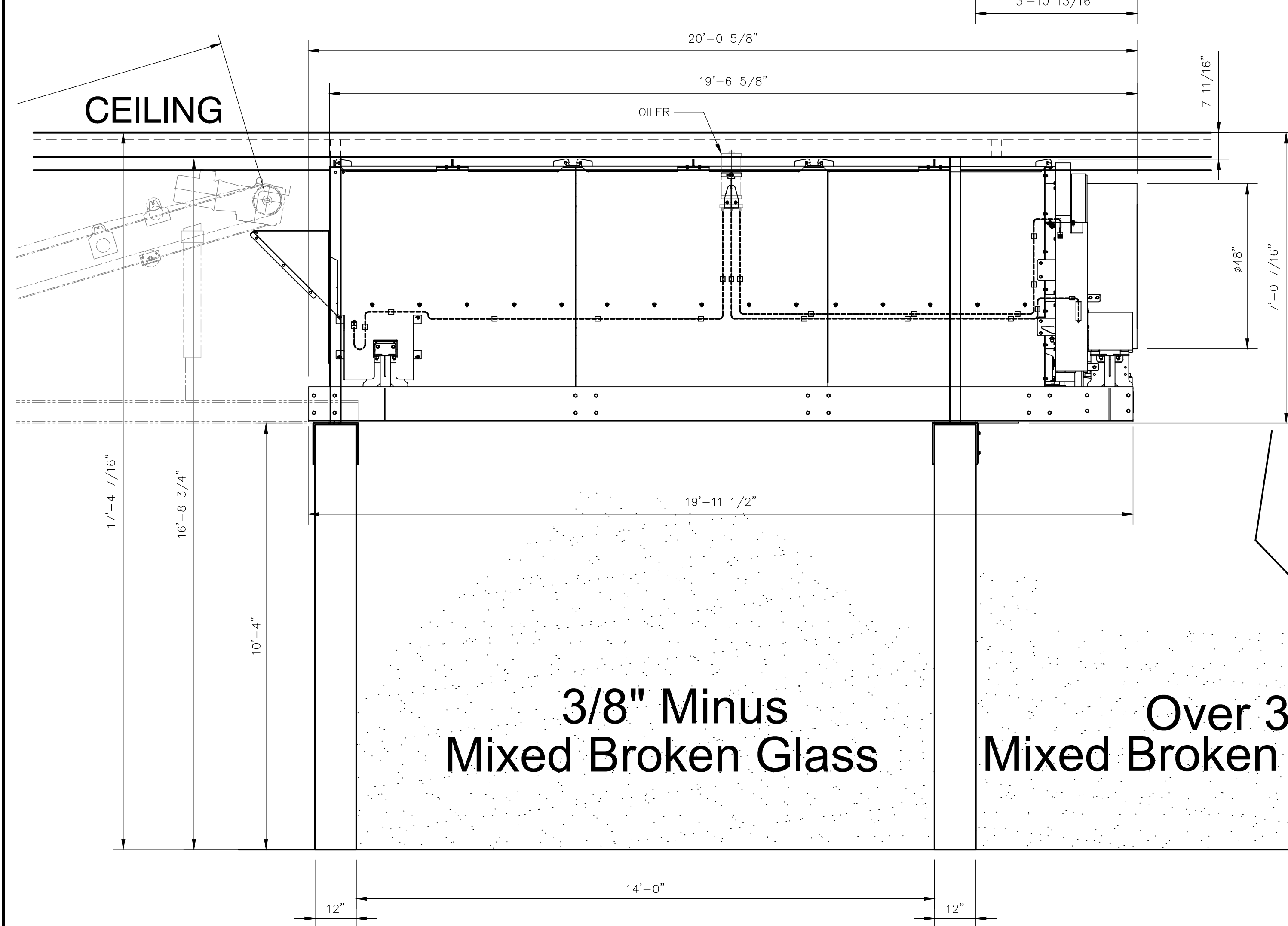
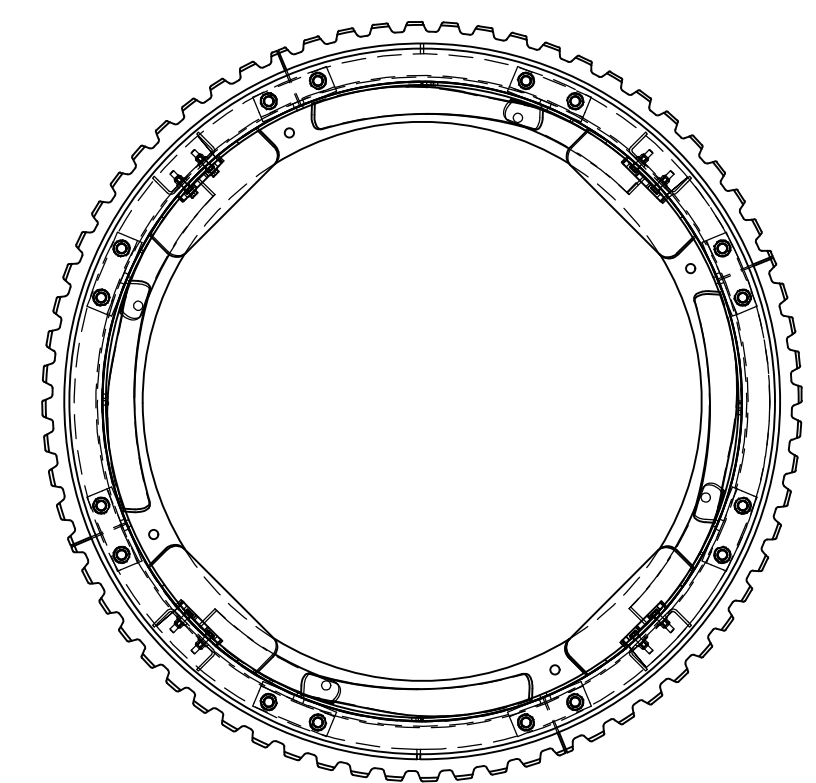
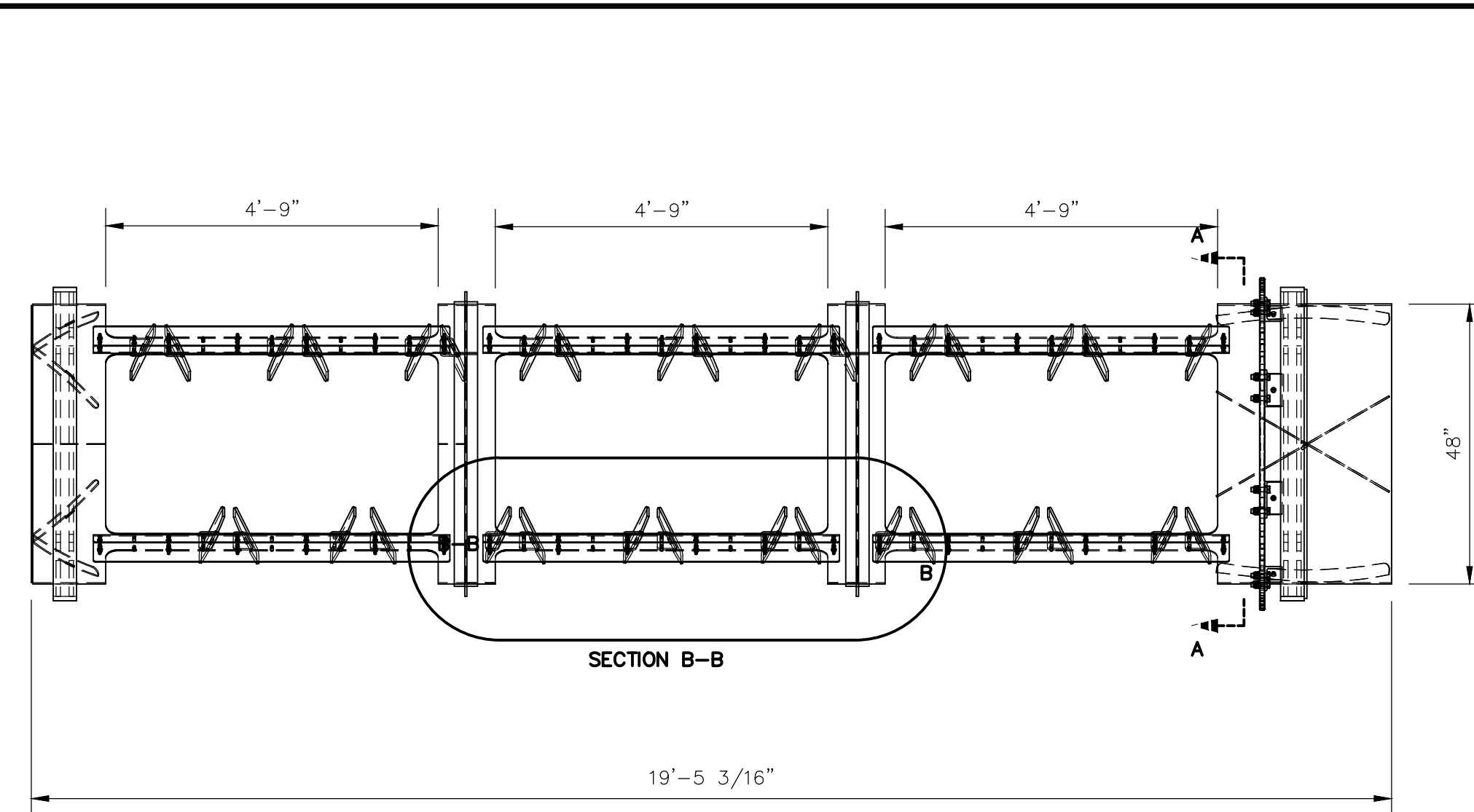
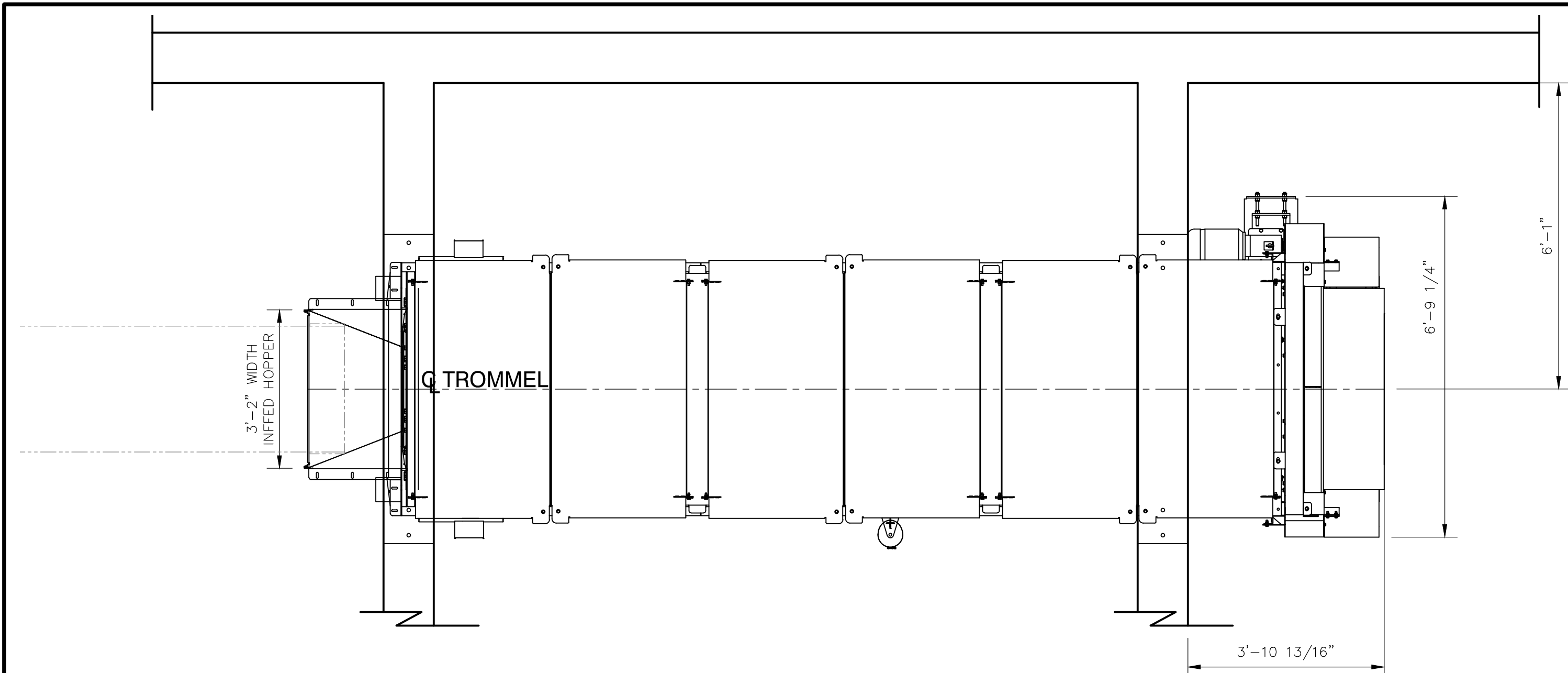
Title		Reference	
INSTALLATION DRAWING		MR-2871A R1	
FINES SCREENING TROMMEL #T-1		Date 12/02/08	
LEE-COUNTY		Scale/Echelle 1/2"=12"	
		Drawing No./Dessin No. CRM-070L	
<small>TOLERANCES UNLESS OTHERWISE SPECIFIED DECIMAL DIMENSIONS FRACTIONS DECIMAL DIMENSIONS MILLIMETERS DECIMAL DIMENSIONS ALL DIMENSIONS ARE IN INCHES UNLESS OTHERWISE SPECIFIED</small>		Revision 0	



#	NUMERO DE PIECE	QTÉ	DESCRIPTION	M
1	61711A000	1	ASSEMBLAGE CABINET	1
2	61711A036	4	SOUS ASSEMBLAGE ROUE ET PILLOW BLOC	1
3	61711A037	1	ASSEMBLAGE ROUE LONGITUDINALE	1
4	61711A053	1	POUTRE CÔTÉ OPPOSÉE ASM SOLDE	1
5	61711A054	1	POUTRE CÔTÉ MOTEUR ASM SOLDE	1
6	61711A064	1	GARDE CHAÎNE SECTION DU HAUT	1
7	61711A065	1	GARDE CHAÎNE CÔTÉ ROUE	1
8	61711A080	1	GARDE CHAÎNE CÔTÉ MOTEUR	1
9	61711A086	2	SUPPORT AJUSTABLE DULCAM FOLLOWER ASM	1
10	61711B000	1	TAMBOUR 48" X 15'-0" (3 PASSES) ASSEMBLAGE GÉNÉRAL	1
11	61711C000	1	MOTEUR ASSEMBLÉE	1
12	61711A084	2	GARDE ROUE AVANT	2
13	CHAÎNE_81XH	1	CHAÎNE 81XH (2.609" PITCH) X 78 PITCHS ET UNE MAILLE POINTÉ (206.11" LG)	A
14	_BOHEX_006Cx100G05ZP	4	BOULON T.HEX. 3/8-16 NC X 1" LG G8 Z.P.	Q
15	_BOHEX_006Cx125G05ZP	18	BOULON T.HEX 3/8-16 NC X 1 1/4" LG G8 Z.P.	Q
16	_BOHEX_006Cx150G05ZP	2	BOULON T.HEX 3/8-16 NC X 1 1/2" LG GR.5 Z.P.	Q
17	_BOHEX_010Cx200G08ZP	32	BOULON T.HEX. 5/8-11 NC X 2" LG GR5 Z.P.	Q
18	_NUHEX-006C-G05COZP	20	ECROU DE BLOCAGE DE NYLON 3/8-16 NC Z.P.	Q
19	_NUHEX-010C-G05COZP	32	ECROU HEX. BNLOCAGE DE NYLON 5/8-11 NC G8 ZP	Q
20	_WAFLA-0006-ZP	36	RONDELLE PLATE 3/8" NOMINAL Z.P.	Q
21	_WAFLA-0010-ZP	32	RONDELLE PLATE SAE 5/8" NOM. Z.P. (1.5/16" D.E. X 21/32" D.I. X 3/32" EPAIS)	Q
22	_WALOC-0006-ZP	24	RONDELLE À RESSORT 3/8" Z.P.	Q
23	_WALOC-0010-ZP	32	RONDELLE À RESSORT 5/8" GR. 5 Z.P.	Q

QTÉ : 1  
 MASSE:

<b>DESIGN GLOBAL</b> Plus de 20 ans d'expérience Spécialiste en conception, intégration, consultation et formation (819) 470-6688 (418) 334-8888 designglobal@bief.net	MATERIAL:		VERIF.	DATE:
	TOLERANCES GÉNÉRALES:		DATE: 2012-01-21	SECTION / AN: JORDY RHOX
	1"-0" ± 1/4	12" ± 1/16	CLIENT: MACHINEX INC	PROJET: LEE COUNTY
	.0 ± .040	.00 ± .025	TITRE: TROMMEL DOUBLE TAMBOUR 48" ET 36" DIA. X 3 PASSES DE 5'-0"	
ENLEVER LES ARRÊTES COUPANTES		ECHELLE: 1/16	No. DESSIN: 61711I0000	REV



3/8" Minus  
Mixed Broken Glass

Over 3/8"  
Mixed Broken Glass

Over 3/8"  
Mixed Broken Glass

EQUIPMENT LIST								
EQUIP No	LINE No	DESCRIPTION	MODEL	DIMENSION	POWER	POWER SUPPLY	SPEED	NO. MFT
T-1	GLASS	TROMMEL	MACHINEX	ø4'-0" x 19'-0" LG	5 HP	460/3/60	64 RPM	CRM-070L

DWG. No.	TITLE	No.	DESCRIPTION	DATE	BY
	REFERENCE DRAWINGS				
	REVISIONS				

SCALE : 1/2" = 12"

DESIGNED BY : MACHINEX INDUSTRIES INC.  
2121, Olivier Street  
Plessisville, Quebec, Canada, G6L 3G9  
Phone: (819) 362-3281  
Fax: (819) 362-2280 E-Mail sales@machinex.ca

DESIGNED : CES DATE : 2011-10-29

DRAWN : CES DATE : 2011-10-29

CHECKED : DATE :

APPROVED : DATE :

**MACHINEX**

CLIENT : ReCOMMUNITY  
FORT MYERS, FL

TROMMEL ASSEMBLY

CLIENT MACHINEX

PROJECT NO : DRAWING NO : PROJECT NO : DRAWING NO :

2211116 MR-2871A

5 REV. 1

**M**

DWG ISSUED ON : 12/01/13

DWG ISSUED BY : CHARLES-ETIENNE SIMARD PROJECT DIR.

APPROVED

NOT APPROVED

APPROVED WITH MODIFICATION

FIRM : \_\_\_\_\_

SIGNATURE : \_\_\_\_\_

DATE : \_\_\_\_\_

THIS DRAWING IS THE PROPERTY OF MACHINEX INDUSTRIES INC. IT MAY NOT BE COPIED, REPRODUCED OR TRANSMITTED/RENDERED ACCESSIBLE TO A THIRD PARTY IN ANY WAY WITHOUT WRITTEN CONSENT OF MACHINEX INDUSTRIES INC. EQUIPMENT SHOWN ON THIS DRAWING HAS BEEN RELEASED FOR MANUFACTURING. ANY CHANGE WILL RESULT IN A PRICE ADJUSTMENT AND DELIVERY RE-SCHEDULING.