



LeeTran Transfer Stations

Fort Myers Beach Park and Ride
Cape Coral Transfer Station
Rosa Parks Transportation Center
Edison Mall Transfer Station

February 2022

Prepared by



Table of Contents

Section 1 Introduction and Location Overview	1
Introduction	1
Location Overview	2
Section 2 Deficiencies and Solutions	4
Assessment Process	4
General	4
Parking	5
Accessible Parking	5
Accessible Routes.....	6
Interior and Exterior Accessible Routes	6
Curb Ramps.....	8
Crosswalks.....	9
Ramps.....	9
Handrails	10
Doors and Doorways.....	10
Amenities.....	12
Reach Range.....	12
Benches	14
Drinking Fountains.....	14
Restrooms	15
Toilet Compartments.....	15
Toilet Paper Dispenser.....	16
Grab Bars.....	17
Sink, Mirror, and Shelf.....	18
Room Signage	19
Section 3 Prioritization.....	20
Section 4 Implementation and Financial Plan.....	21
Development of Costs.....	21
Implementation Plan.....	22

List of Figures

Figure 1.1 LeeTran Transfer Centers	3
Figure 2.1 Accessible Parking Spaces.....	6
Figure 2.2 Accessible Route Standards Diagram	7
Figure 2.3 Protruding Objects.....	7
Figure 2.5 Curb Ramp Landing	8
Figure 2.6 Accessible Crosswalk	9
Figure 2.4 Handrails	10
Figure 2.5 Accessible Maneuvering Clearance at Doorway	11
Figure 2.6 Accessible Garbage Can Located Adjacent to Paved Trail	12
Figure 2.7 Unobstructed Reach Range	13
Figure 2.8 Obstructed Reach Range	13
Figure 2.9 Bench Back Support.....	14
Figure 2.10 Drinking Fountain Location	15
Figure 2.11 Drinking Fountain Height.....	15
Figure 2.12 Toilet Location	16
Figure 2.13 Toilet Paper Dispenser.....	16
Figure 2.14 Grab Bars	17
Figure 2.15 Restroom Sinks and Mirror	18
Figure 2.16 Room Signage	19

List of Tables

Table 1 Total Ridership (2019)	2
Table 2 Minimum Accessible Parking Requirements.....	5
Table 3 Prioritization Designations	20
Table 4 Cost Estimate Summary	22

Appendices (provided under separate cover)

Appendix A, B, C and D: Barriers to Accessibility Assessment Report

SECTION 1 INTRODUCTION AND LOCATION OVERVIEW

INTRODUCTION

The Americans with Disabilities Act (ADA) of 1990 is a civil rights statute that prohibits discrimination against people with disabilities. The ADA states that by designing and constructing facilities for public use that are not accessible to people with disabilities could constitute discrimination. The ADA applies to all facilities, including those built before and after 1990, and local governments are required to perform a self-evaluation of their infrastructure and identify all barriers to accessibility. An ADA Transition Plan shall then be developed to address all ADA related deficiencies.

The ADA Transition Plan is intended to achieve the following:

- Identify physical barriers that limit the accessibility of the facility to individuals with disabilities,
- Describe the methods to be used to make the facility accessible,
- Provide a schedule for removing the barriers to accessibility, and
- Identify the name of the official responsible for the plan's implementation.

In an effort to improve access, safety, and accessibility of citizens with disabilities, LeeTran is conducting an ADA Assessment and developing an ADA Transition Plan for bus stops, transfer centers, parking, and other amenities available at each station. To ensure that LeeTran facilities are accessible for persons with disabilities, Benesch's review covers facility entrances and exits, accessible routes, curb ramps, handrails, existing indoor and outdoor facilities, doors, restrooms, signage, as well as other amenities.

This assessment includes a comprehensive inventory of the conditions of the LeeTran facilities and identifies and prioritizes improvements to address deficiencies. Information relating to the accessibility of each facility has been collected. The purpose of these data is to improve LeeTran staff understanding of accessibility issues pertaining to the ADA and Florida Building Code/Florida Accessibility Code (FBC/FAC) requirements—specifically, how the ADA and FBC/FAC relate to individual facilities and how to identify elements and facilities that are in compliance with the ADA and those that are not. This document serves as the ADA Transition Plan's summary report outlining the development of the facility inventory and database of the barriers to accessibility and the prioritization/phasing plan of the improvements. Separate appendices have been prepared that include detailed summary of each violation and recommendation.

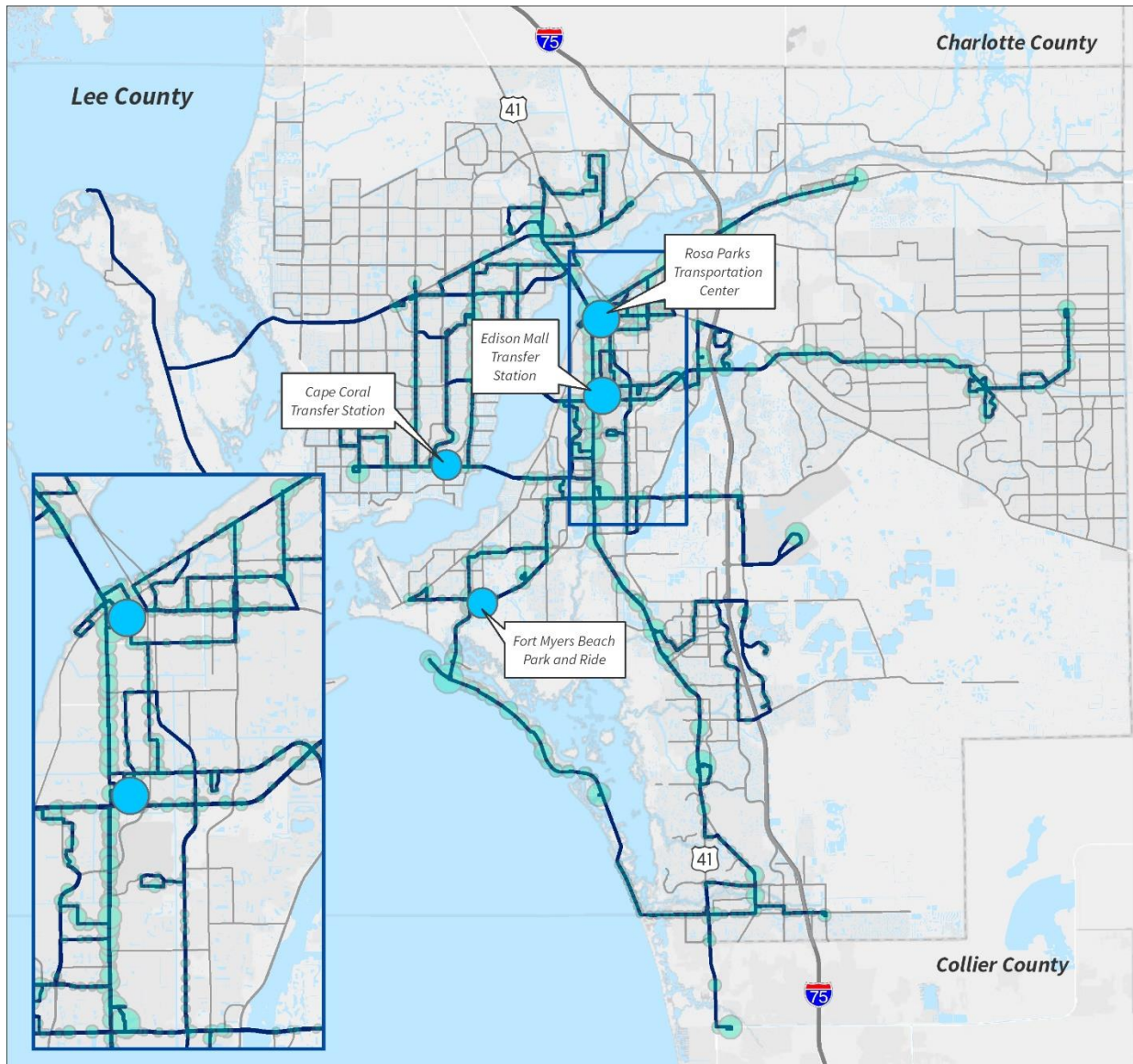
LOCATION OVERVIEW

The assessed LeeTran transfer stations are Fort Myers Beach Park and Ride, Cape Coral Transfer Center, Edison Mall Transfer Station, and Rosa Parks Transportation Center. The map below shows where each transfer station is located and the 2019 total ridership (boarding and alighting).

- **Fort Myers Beach Park and Ride** is located at 11101 Summerlin Square Dr. This facility offers 125 parking spaces, restrooms, free WiFi, security and a bus kiosk. Patrons can park at this location and take the 490 Trolley to Times Square.
- **Cape Coral Transfer Center** is a one-story building located on 820 SE 47th Terrace. The Transfer Center is located between Del Prado and Coronado boulevards. It was officially opened in 2002 by the Lee County Board of County Commissioners.
- **The Edison Mall Transfer Station** is located at 4125 Cleveland Avenue. The Transfer Station is located between Colonial Boulevard and Winkler Avenue.
- **The Rosa Parks Transportation Center** was built in 2000 is located at 2250 Widman Way. The station is situated nearby Fort Myers Fire Department Station 11 at the South West corner of Jackson Street and Widman Way.

Table 1 Total Ridership (2019)

Transfer Station	Bus Stop ID	Total 2019 Ridership
Fort Myers Beach Park and Ride	12094	123,461
Cape Coral Transfer Station	10215	114,912
Edison Mall Transfer Station	10006	490,100
Rosa Parks Transportation Center	10047	313,366



LeeTran Stop Activity FY 2019

Bus Stop Activity

- 0 - 1,000
- 1,001 - 5,000
- 5,001 - 20,000
- 20,001 - 50,000
- 50,001 - 213,700

Transfer Center Activity

- 114,912 - 213,700
- 213,701 - 490,100

- Bus Routes
- ▭ High Activity Inset

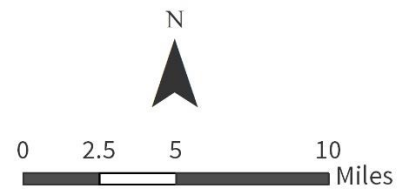


Figure 1.1 LeeTran Transfer Centers

SECTION 2 DEFICIENCIES AND SOLUTIONS

ASSESSMENT PROCESS

A walk-thru and assessment of building elements for compliance with applicable accessibility standards was conducted on October 14, 2021, by Benesch staff certified as Accessibility Inspectors.

The facility survey addressed each accessible element and space within and external to the facility and included applicable elements such as facility entrances/exits, parking, sidewalks, accessible routes, curb ramps, handrails, signage, existing indoor and outdoor facilities, doors, restrooms, and all other elements covered by the Americans with Disabilities Act Accessibility Guidelines (ADAAG) and FBC/FAC.

The survey included physical measurements and counts for components or systems. Survey findings were collected and recorded on Benesch's custom Android-based ADA compliance checklist application. Photos were taken with the tablet of each area of the facility for familiarization and were later referenced to illustrate deficiency findings. A smart-level measuring wheel and a tape measure were used to evaluate physical features.

The digital data and photos were then uploaded to a database on Benesch's secure servers for backup. Where appropriate, photos are included in this Accessibility Assessment Report (AAR), as shown in the appendices, to illustrate issues or deficiencies. The facility survey consisted of non-intrusive visual observations, which allowed for a readily-accessible and easily-visible components and systems assessment of the facility, which included measurements of space and clearance dimensions, slope, walkway widths, reach ranges, maneuverability measurements, etc.

GENERAL

The use and occupancy of the transfer stations dictates egress and accessible route requirements consistent with ADAAG regulations. Because the general public regularly accesses the facility, and in the interest of establishing an accessibility compliance baseline condition report of the facility, a full accessibility assessment was conducted. Where deficiencies in compliance with ADAAG or FBC/FAC exist, descriptions of the deficiency, regulatory requirement(s) pertinent to the deficiency, a photo showing the deficient element, and recommendations for remediation of the deficiency are shown in the appendices.

The following sections generally describe and illustrate common barriers to accessibility found throughout the building.

PARKING

Accessible Parking

Accessible parking is vital in allowing visitors access to any facility. The FBC/FAC is more stringent than the ADAAG related to parking. However, it should be noted that parking spaces are not required by the FBC/FAC or ADA. Nonetheless, if parking is provided, accessible parking also must be provided and must meet the following requirements and guidelines as outlined in the ADA and FBC/FAC.

Standards:

- Accessible parking spaces shall be at least 144” wide.
- Accessible parking spaces shall have an adjacent access aisle that is 60” wide minimum.
- The access aisle shall connect to an accessible route.
- Accessible parking spaces and access aisles shall have a running slope and a cross slope no greater than 2%.
- The accessible parking and access aisle shall be made from a surface that is firm, stable, and slip resistant (wet or dry).
- Accessible parking spaces shall be located on the closet accessible route to the facility’s entrance.
- Accessible parking spaces shall have signs identifying them.
 - The sign shall be approved by FDOT and placed on a pole at least 60” above the ground.
 - The sign shall say “PARKING BY DISABLED PERMIT ONLY.”
 - The signage shall include the International Symbol of Accessibility.
 - The sign shall indicate the penalty for illegal use and list the Florida Statute.
- At least one space for every 6 or fraction of 6 accessible spaces must be van accessible.
- The minimum number of accessible parking spaces are based upon the total number of parking spaces, as summarized in Table 2.1.

Table 2 Minimum Accessible Parking Requirements

Total Parking Spaces	Minimum Accessible Parking
1 – 25	1
26 – 50	2
51 – 75	3
76 – 100	4

Figure 2.1 illustrates the standards mentioned above.

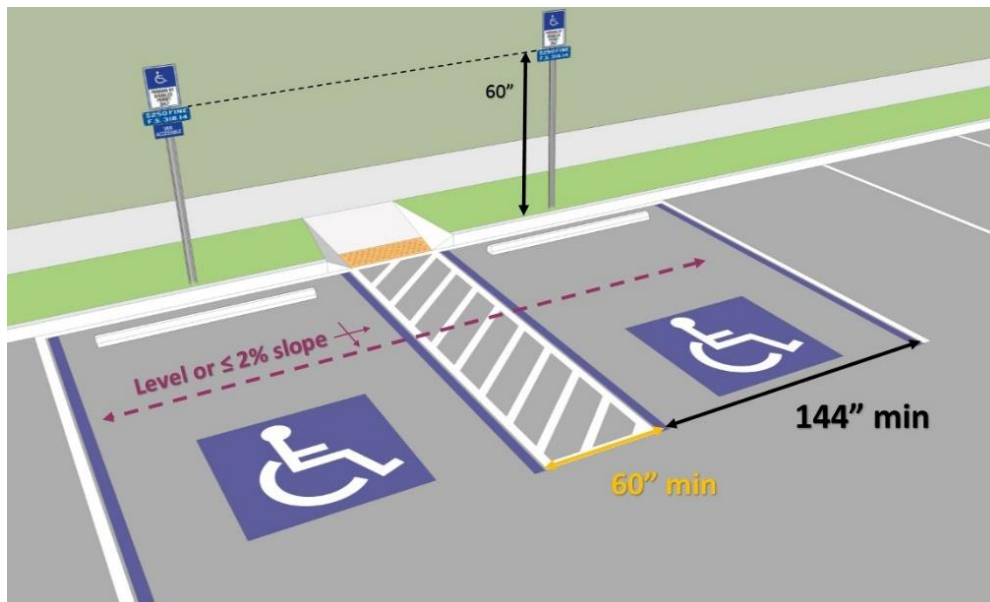


Figure 2.1 Accessible Parking Spaces

ACCESSIBLE ROUTES

Interior and Exterior Accessible Routes

Sidewalks and routes that connect to the pedestrian arrival points must be accessible. In addition, the requirements listed below also apply to all internal accessible routes used by the public as they navigate the internal corridors of the building, as described in sections §301 and §401 of the 2010 ADA Standards for Accessible Design.

Standards:

- The surface must be firm, stable, and slip resistant (wet or dry).
- Shall be a 36" minimum wide continuous unobstructed path.
 - FDOT requires a wider width for sidewalks and shared-use paths depending on the type of adjacent roadway.
 - The accessible route is allowed to decrease to a width of 32" for a maximum distance of 24", as shown in Figure 2.2.
- Shall have 60" by 60" passing spaces at 200' intervals minimum.
- The running slope (parallel to direction of travel) must be equal to or less than 5% (>5% = ramp) for an accessible route. However, a sidewalk is permitted to have a running slope greater than 5% if it follows the slope of the adjacent roadway.
- The cross slope (perpendicular to direction of travel) must be less than or equal to 2%.
- Changes in level between 0.25" and 0.5" must be beveled at 1:2 slope.
- Changes in level greater than 0.5" are not allowed or must be ramped.
- Gaps in gratings must be no greater than 0.5" wide and openings must be aligned perpendicular to travel.
- Objects with edges between 27" and 80" above the floor can be considered protruding objects, as shown in Figure 2.3, if their edges protrude more than 4" horizontally into the circulation path.

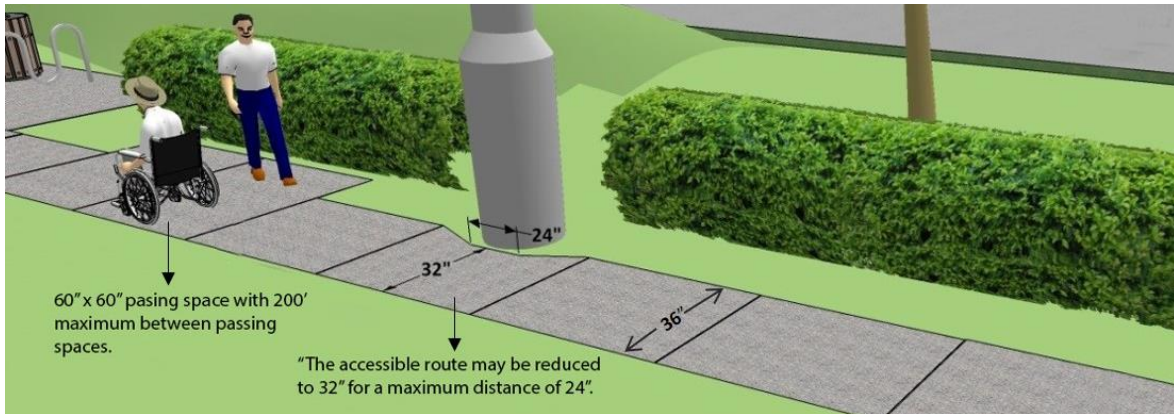


Figure 2.2 Accessible Route Standards Diagram

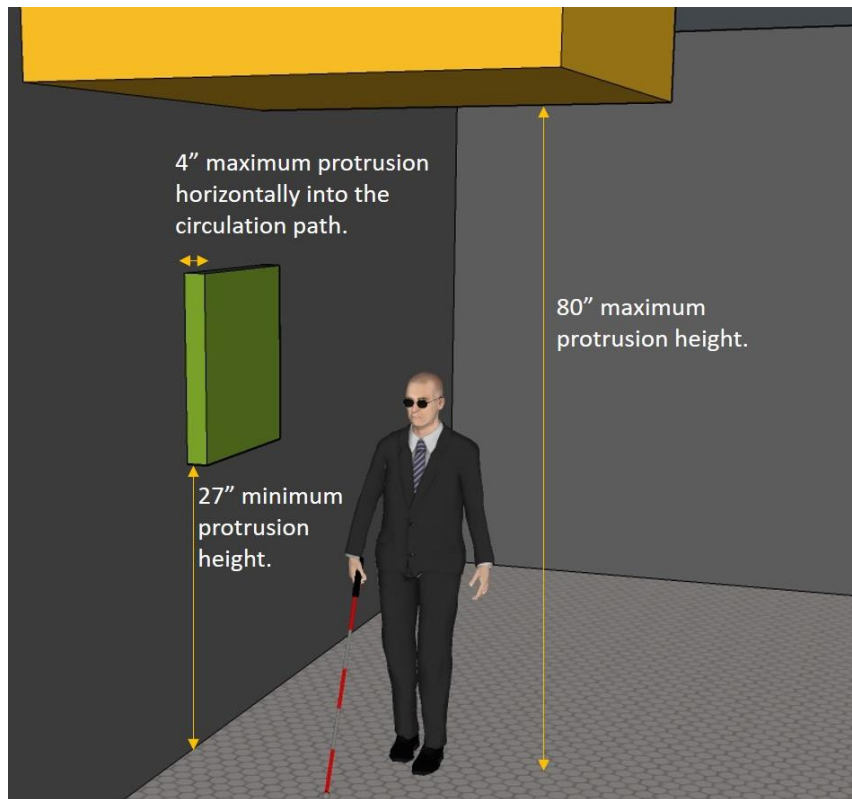


Figure 2.3 Protruding Objects

Curb Ramps

According to sections §405 and §705 of the 2010 ADA Standards for Accessible Design, curb ramps are required to meet the criteria listed below and shown in Figure 2-1.

Standards:

- Shall have a minimum of a 36" wide continuous unobstructed path.
- The running slope (parallel to direction of travel) must not be steeper than 8.3%.
- Curb ramp flares shall have a running slope not steeper than 10%.
- The cross slope (perpendicular to direction of travel) must be 2% or less.
- The rise shall be 30" maximum.
- Curb ramps must have detectable warnings 24" wide and shall extend the full length of the curb ramp.
- Detectable warning surfaces shall contrast visually with adjacent walking surfaces either light-on-dark, or dark-on-light.
- Detectable warnings shall consist of raised truncated domes with a height of 0.2".
 - A base diameter of 0.9" minimum and 1.4" maximum, and a top diameter of 50% minimum to 65% maximum of the base diameter.
- Landings must be located at the top of all curb ramps and must be a minimum of 36" long and at least the width of the ramp.
 - Curb ramps that do not have level landings at changes in direction can create a compound slope. Curvilinear ramps continually change direction and cannot, by their nature, meet the requirements for accessible routes.

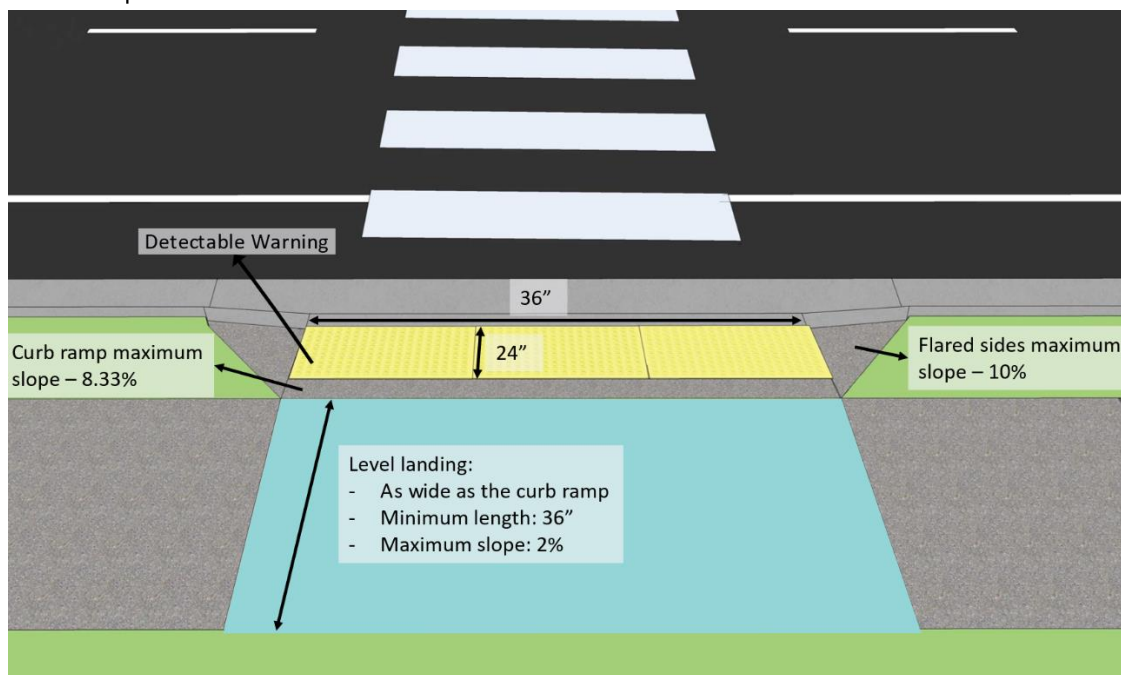


Figure 2.4 Curb Ramp Landing

Crosswalks

A crosswalk extends the sidewalk network across a street at an intersection or midblock location. Crosswalk markings are important because they provide guidance for pedestrians who are crossing roadways by defining paths on approaches to and within signalized and unsignalized intersections. At non-intersection locations, crosswalk markings legally establish the crosswalk (MUTCD Section 3B.18).

Standards:

- Be clearly marked through appropriate pavement markings to inform the pedestrian where to cross and to alert motorists of where crossing pedestrians should be expected.
- Crosswalk pavement markings should be smooth and slip-resistant and are detailed in the MUTCD (Section 3B.18).
 - Crosswalk lines shall consist of solid white lines and shall not be less than 6" or greater than 24" in width.
 - Crosswalk lines shall extend across the full width of pavement or to the edge of the intersecting crosswalk to discourage diagonal parking between crosswalks.
 - The curb ramp shall be within the extension of the crosswalk markings.
- Perpendicular to the roadway to create the shortest exposure time and distance for the crossing pedestrian.

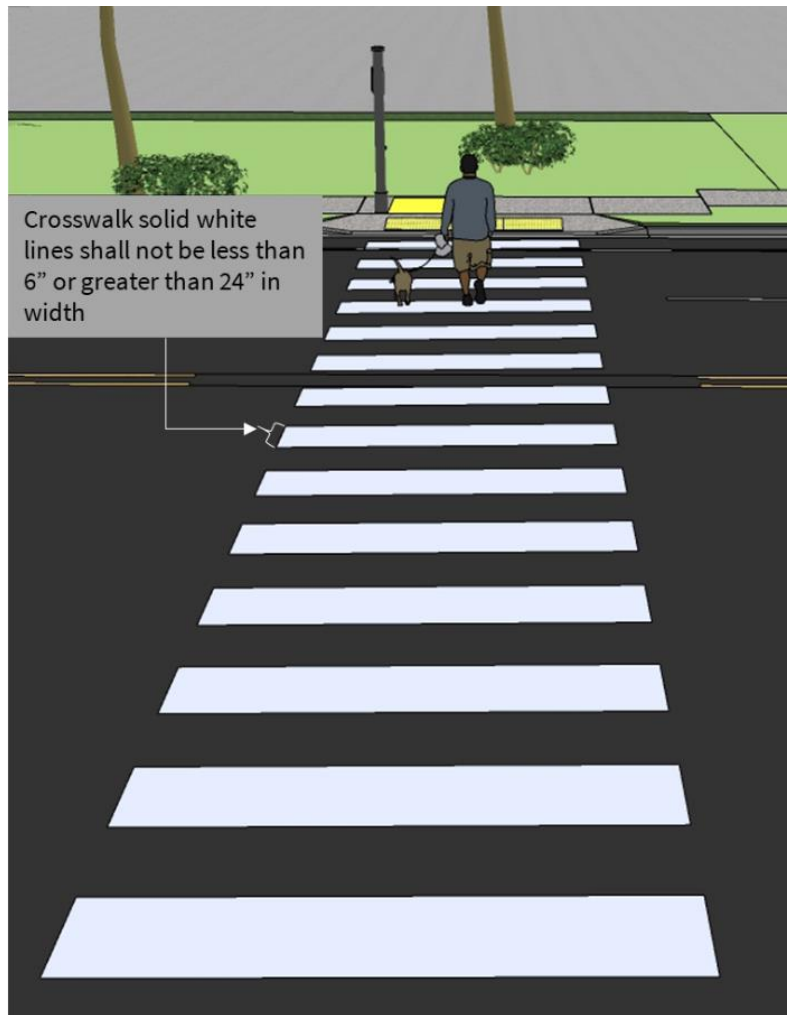


Figure 2.5 Accessible Crosswalk

Ramps

The requirements for a ramp are more stringent than those of an accessible route, as listed in §405 of the 2010 ADA Standards for Accessible Design and described below.

Standards:

- Shall have a minimum of a 36" wide continuous unobstructed path.
- The running slope (parallel to direction of travel) must not be steeper than 8.3%.
- The cross slope (perpendicular to direction of travel) must be 2% or less.
- The rise shall be 30" maximum.
- Landings must be located at the top and bottom of all ramp runs and must be a minimum of 60" long and at least the width of the ramp.
 - Ramps that do not have level landings at changes in direction can create a compound slope. Curvilinear ramps continually change direction and cannot, by their nature, meet the requirements for accessible routes.
- Ramp runs with a rise greater than 6" shall have handrails and edge protection.

Handrails

Handrails along ramps and stairs shall comply with §405.8 and §505 of the 2010 ADA Standards for Accessible Design.

Standards:

- Handrails must be provided along ramps and stairs. Where handrails are required, they must be installed on both sides of the ramp or stairs.
- Handrail gripping surfaces shall be installed at a height of 34" minimum and 38" maximum above the walking surface, stair nosing, and ramp surface.
- The clearance between handrail and adjacent surface shall be 1.5" minimum.
- Ramp handrails shall extend 12" minimum beyond the top and bottom of ramp runs. Extensions shall be continuous and return to a wall or be continuous to the handrail of an adjacent ramp run.
- At the top of the stairs, handrails shall extend horizontally 12" minimum directly above the stair riser and shall return to the wall or guard, as shown in Figure 2.5.
- At the bottom of the stairs, handrails shall extend a distance at least equal to one tread depth beyond the last riser and return to the wall or guard, as shown in Figure 2.5.

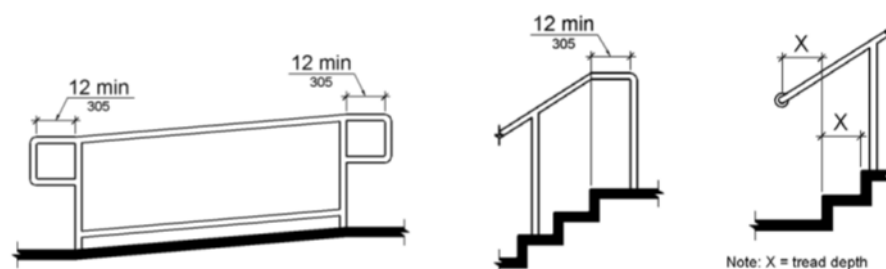


Figure 2.6 Handrails

Doors and Doorways

Doors and doorways that are part of accessible routes and shall comply with §404 of the 2010 ADA Standards for Accessible Design.

Standards:

- Sixty percent (60%) of all public entrances shall be accessible. Directional signs shall be provided to guide users to the nearest accessible means of egress.
- Accessible doors shall have a clear width of 32" minimum measured between the face of the door and the stop.
- If thresholds are provided, they shall be 0.5" high maximum.
- The distance between two doors in series shall be 48" minimum plus the width of the door swinging into the space.
- The maneuvering clearance varies depending on type of door and direction of approach. The most used door with a front approach, requiring the user to pull to it, shall have a 60" maneuvering clearance perpendicular to doorway and 18" parallel to doorway, as shown in Figure 2.6.
- Operable parts such as door handles, pulls, latches and locks shall be located 34" minimum and 48" maximum above the floor.
- The door closing speed from a 90-degree open position to 12 degrees shall be 5 seconds minimum.

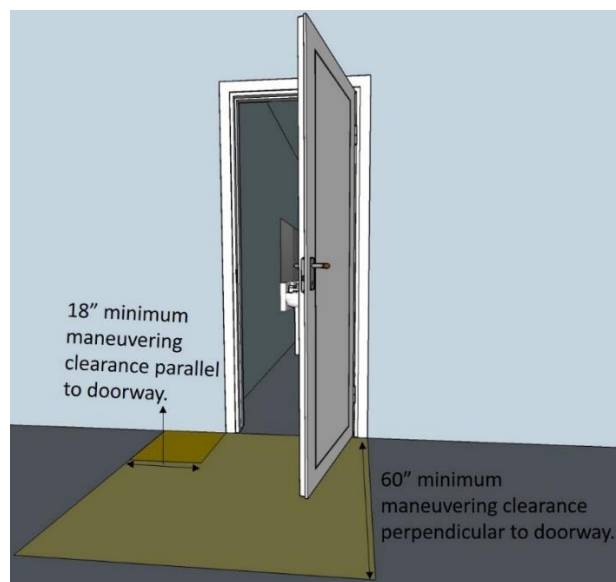


Figure 2.7 Accessible Maneuvering Clearance at Doorway

AMENITIES

Reach Range

Care should always be taken when designing or improving an accessible route within a building to keep the path free of obstructions. Amenities such as benches, garbage cans, and drinking fountains must be placed to not interfere with the accessible path but, at the same time, must be located on an accessible route, within reach range, and not act as a protruding object. Not only can these obstructions prevent visitors from accessing and using the amenities, they can also present a potential safety concern.

It should be stressed that amenities that are located off the accessible path are considered inaccessible. For items to be accessible, they must be located on, adjacent to, or within reach of a firm, stable, and slip-resistant surface, as shown in Figure 2.7.

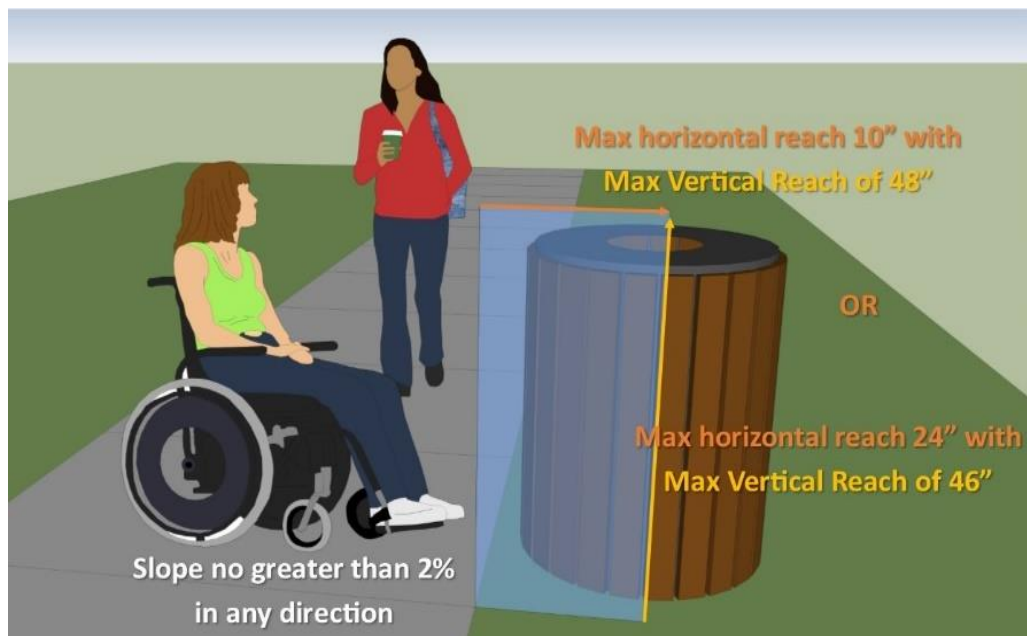


Figure 2.8 Accessible Garbage Can Located Adjacent to Paved Trail

To help clear existing accessible paths from obstructions and to identify those features that are currently inaccessible, data on infrastructure were collected in the field to determine if they present an obstruction or are inaccessible. Based on the data collected, the difficulty level of remediating a barrier to accessibility could range from moving a bench to an accessible location to designing and installing a new accessible route to an amenity.

Reach range standards, as described below and shown in §308 of the 2010 ADA Standards for Accessible Design, were used to determine if an amenity can be accessed by a person in a wheelchair.

Standards:

- The unobstructed minimum vertical reach range is 15" and maximum is 48" above the floor if the horizontal depth is 10" maximum, as shown in Figure 2.8.

- The obstructed reach range is 48” maximum above the floor if the horizontal obstruction depth is 20” maximum, and 44” maximum if the horizontal depth is between 20”–25”, as shown in Figure 2.9.
- A level, 30”x48”, firm, stable, and slip-resistant clear floor space must be present adjacent to the amenity.

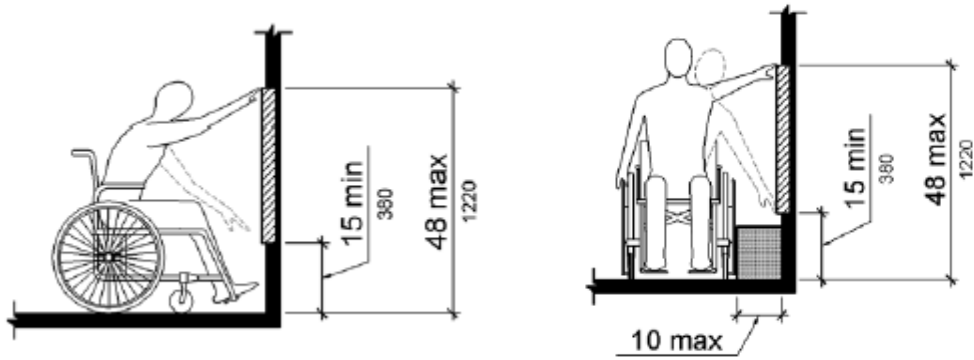


Figure 2.9 Unobstructed Reach Range

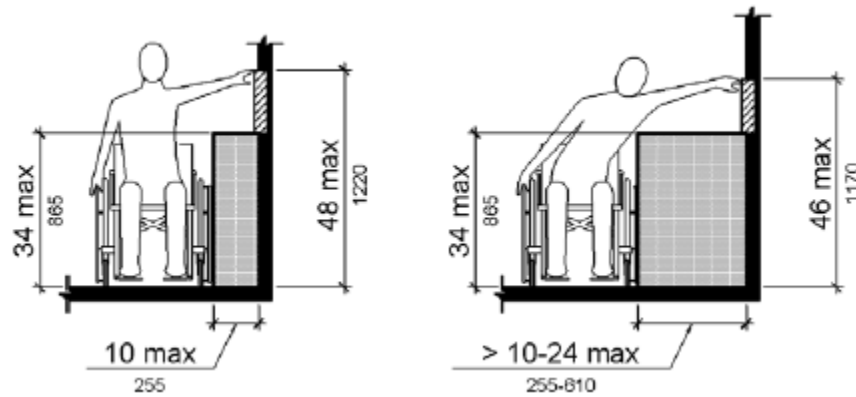


Figure 2.10 Obstructed Reach Range

Benches

Benches had not been installed when the facility was assessed. When installed, benches shall comply with §903 of the 2010 ADA Standards for Accessible Design.

Standards:

- Benches shall have seats that are 42" long minimum, 20" deep minimum and 24" deep maximum.
- A back support shall be provided or affixed to a wall.
- Back support shall be 42" long minimum and shall extend from a point 2" maximum above the seat surface to a point 18" minimum above the seat surface.
- Back support shall be 2½" maximum from the rear edge of the seat measured horizontally.
- The top of the bench seat surface shall be 17" minimum and 19" maximum above the floor.
- Allowable stresses shall not be exceeded for materials used when a vertical or horizontal force of 250 pounds is applied at any point on the seat, fastener, mounting device, or supporting structure.

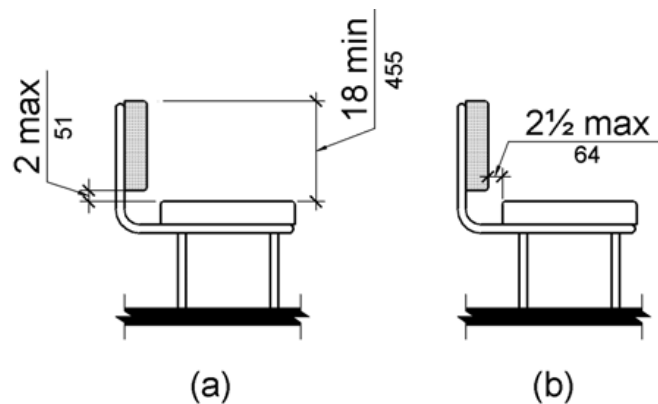


Figure 2.11 Bench Back Support

Drinking Fountains

Drinking fountains, like all amenities, must be accessible, as described in §602 of the 2010 ADA Standards for Accessible Design.

Standards:

- Drinking fountains shall be connected to an accessible route.
- The clear floor space, positioned for a forward approach, adjacent to the drinking fountain shall:
 - Be a minimum of 30"x48" in size.
 - Not have any slope greater than 2%.
 - Have a firm, stable, and slip resistant surface.
- Where drinking fountains are provided, there shall be at least two.
 - For a low fountain, the water spout height shall be 36" maximum above the floor.
 - For standing persons, the water spout height shall be 38" minimum and 43" maximum above the floor.
- The spout shall provide a flow of water 4" high minimum and shall be located 5" maximum from the front of the unit.

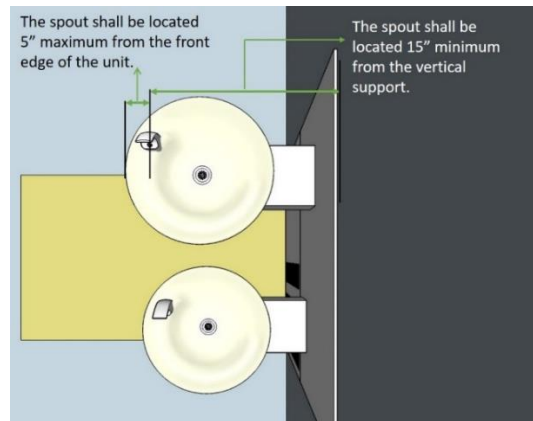


Figure 2.12 Drinking Fountain Location

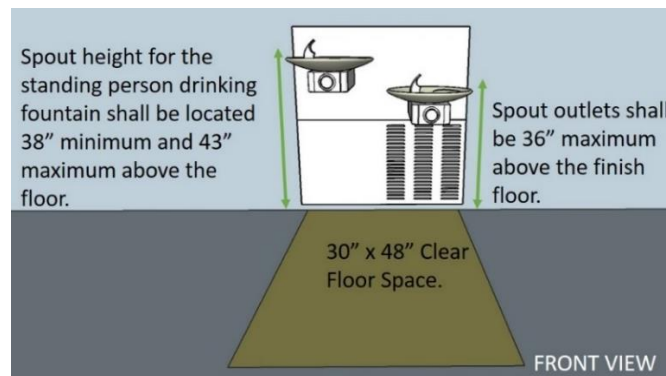


Figure 2.13 Drinking Fountain Height

RESTROOMS

Toilet Compartments

Restrooms are not required by the ADA. However, if provided, then accessible restrooms must also be available per §604 of the 2010 ADA Standards for Accessible Design.

Standards:

- Toilet compartment:
 - The toilet compartment shall be 56" minimum measured from the back wall and 60" minimum measured from the side wall for wall hung water closets.
 - The toilet shall be located 16" minimum to 18" maximum from the sidewall for wheelchair accessible stalls, as shown in Figure 2.15.
 - Seat heights shall be 17" minimum to 19" maximum above the floor.
 - A 60" wide turning space shall be provided within the room. Turning space, clear floor space, and clearance at fixtures shall be permitted to overlap. Doors shall be permitted to swing into the turning space but shall not swing into the clear floor space or clearance at fixtures.
 - Flush controls shall be hand-operated or automatic. Flush controls shall be located on the open side of the toilet.

- Urinals shall be installed at a maximum height of 17” above the floor and a minimum depth of 13.5” measured from the outer surface of the urinal to the back wall.

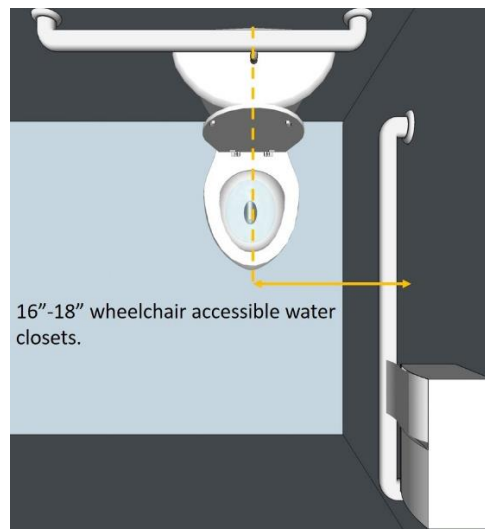


Figure 2.14 Toilet Location

Toilet Paper Dispenser

Issues with the placement of the toilet paper dispensers, not in compliance with §604.7 of the 2010 ADA Standards for Accessible Design, are described below:

Standards:

- Dispensers shall be installed at a height of 7” minimum to 9” maximum in front of the toilet measured to the centerline of the dispenser.
- The outlet shall be within the reach range of 15” minimum and 48” maximum above the floor.
- The toilet paper dispenser shall not be located behind grab bars.
- There shall be a 1.5” minimum clearance below the grab bar. Dispensers shall not be the type that controls delivery or that does not allow continuous paper flow.



Figure 2.15 Toilet Paper Dispenser

Grab Bars

Grab bars in restrooms must comply with §604.5 of the 2010 ADA Standards for Accessible Design.

Standards:

- Toilet compartment:
 - The sidewall grab bar shall be 42" long minimum, installed at 12" maximum from the back wall.
 - The back wall grab bar shall be 36" long minimum and extend 12" minimum from the centerline of the toilet on one side and 24" minimum on the other side.
 - The top gripping surface of the grab bars must be 33" minimum and 36" maximum above the floor.

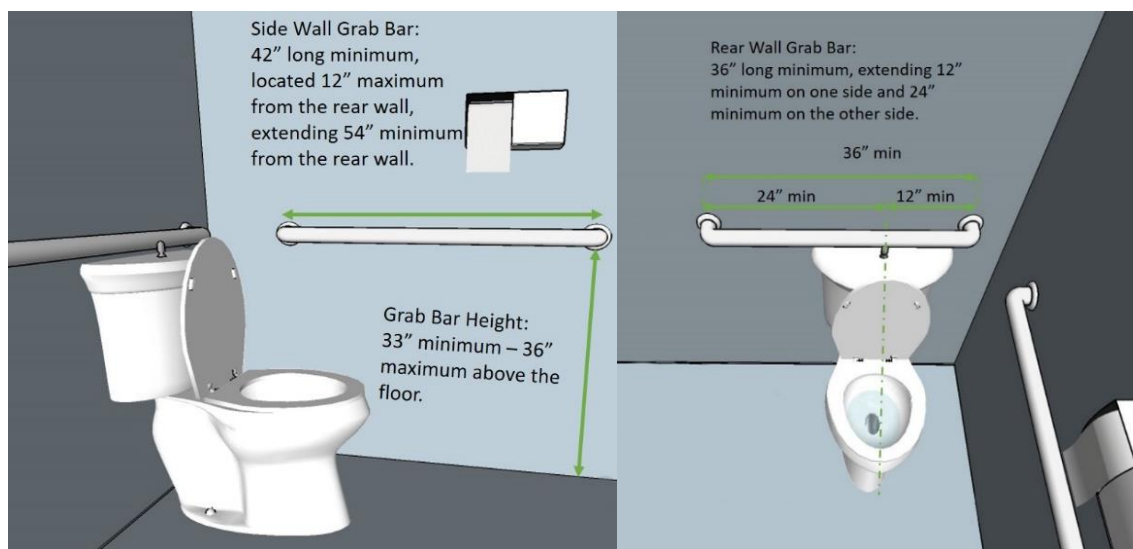


Figure 2.16 Grab Bars

Sink, Mirror, and Shelf

Standards:

- Sinks shall be installed at a maximum height of 34" above the floor.
 - Pipes shall be insulated and configured to prevent contact.
- Mirrors located above sinks shall be installed at a maximum height of 40" above the floor, measured at the bottom of the reflecting surface.
- Coat hooks and shelves shall be located at a minimum reach range of 15" and maximum 48" above the floor.
 - Shelves shall be located 40" minimum and 48" maximum above the floor.

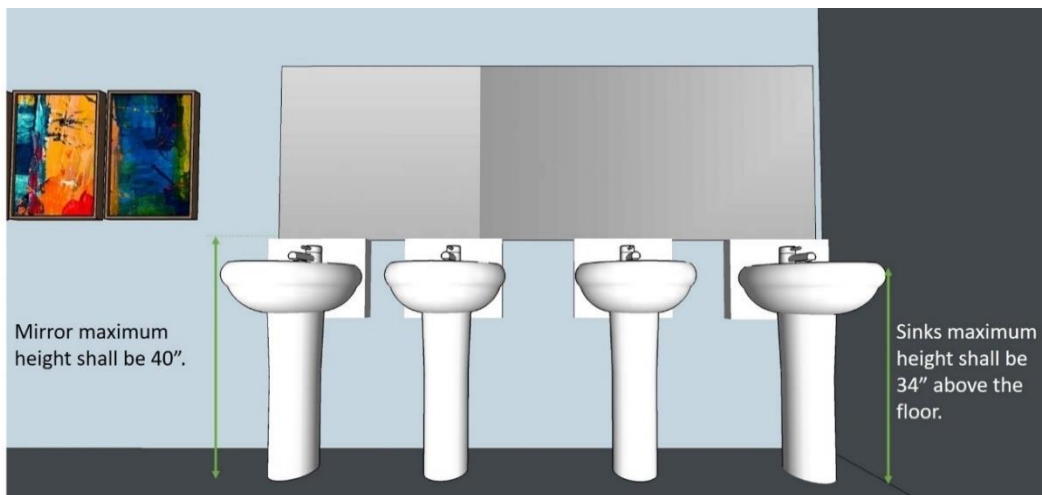


Figure 2.17 Restroom Sinks and Mirror

ROOM SIGNAGE

Signs are required to designate permanent rooms and places, per §701 of the 2010 ADA Standards for Accessible Design. In addition, exit doors must be identified by tactile (raised characters and Braille) signs.

Standards:

- Where a tactile sign is provided at a door, the sign shall be located alongside the door at the latch side.
- Signs containing tactile characters shall be located so that a clear floor space of 18" by 18" minimum, centered on the tactile characters, is provided beyond the arc of any door swing.
- Signs shall be installed 48" minimum above the floor, measured from the lowest character, and 60" maximum above the floor measured from the highest character.
- Signage characters and their background shall have a non-glare finish. The characters shall be high contrast compared to their background.

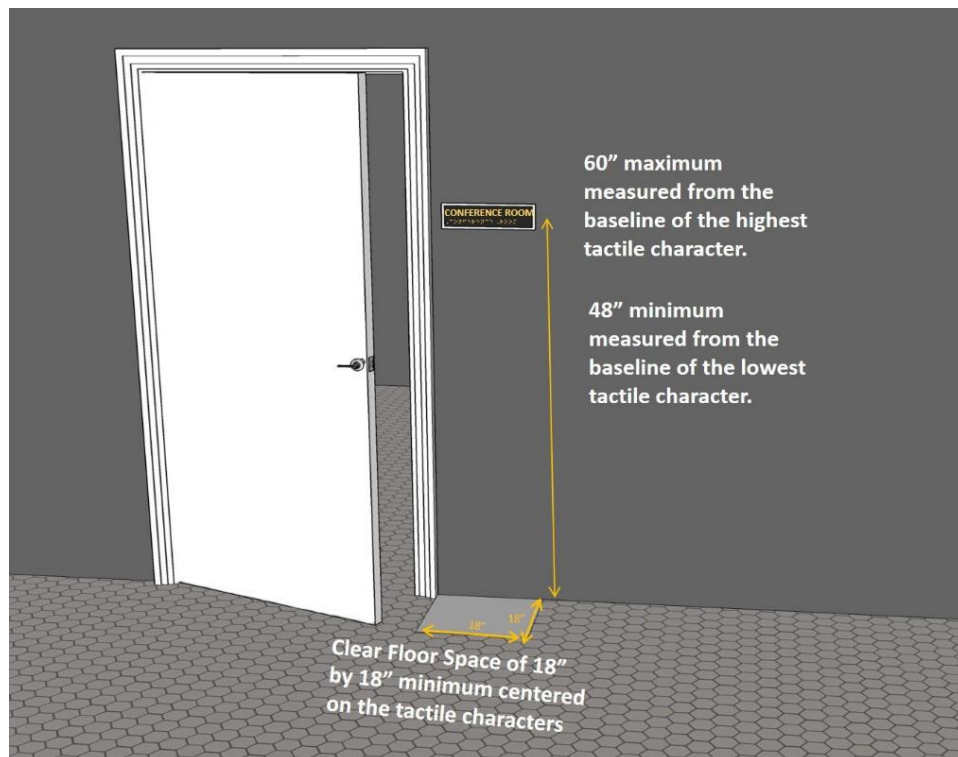


Figure 2.18 Room Signage

SECTION 3 PRIORITIZATION

The barriers to accessibility were prioritized on a 10-point scale, as defined in Table 3.1. This prioritization methodology has been developed by Benesch to assist the LeeTran in determining how the barriers to accessibility can be prioritized based on the severity of the non-compliant item, the existing level of accessibility, and the basic level of accessibility each remediated item will provide.

Priority	Criteria
High	1 <ul style="list-style-type: none"> Major safety issues (dangerously steep slopes, large protruding objects, etc.)
	2 <ul style="list-style-type: none"> New construction built out of compliance Older construction severely out of compliance (accessible routes, ramps, etc.) Alterations that did not bring required elements into compliance
	3 <ul style="list-style-type: none"> Non-compliant accessible route from parking to building entrances (bad slopes, gravel surface, etc.) No accessible route to adjacent sidewalk system, when provided No accessible restroom stalls No accessible parking, insufficient number of spaces, or severely non-compliant parking (bad slopes, gravel surface, extremely narrow, etc.) Severely non-compliant accessible route (structural solution) No tactile signage identifying exits and permanent rooms
	4 <ul style="list-style-type: none"> Non-compliant parking (structural solution) Non-compliant counter heights (break room, multipurpose rooms) No directional signage provided to accessible amenity (interior and exterior) No detectable warnings present at curb ramps
Medium	5 <ul style="list-style-type: none"> Non-compliant exterior or interior door clearances (width issues, protruding objects) Protruding objects obstructing clear pathway (fire extinguishers, AED units) Non-compliant restroom amenities (sink, water closet, urinal, mirror) Non-compliant public access spaces (conference rooms, classrooms)
	6 <ul style="list-style-type: none"> No accessible drinking fountains (missing a high or low fountain) Non-compliant door hardware (doorknob that requires twisting or pinching) Non-compliant showers/changing areas (locker rooms)
	7 <ul style="list-style-type: none"> Non-compliant amenities (picnic tables, benches, vending machines, etc.) Accessible route with moderate access issues (level changes that can be ground down) Non-compliant detectable warnings at curb ramps (high contrast, inadequate length)
Low	8 <ul style="list-style-type: none"> Non-compliant reach ranges (vending machines, garbage cans, AED units) Non-compliant tactile signage at doorways or elevators (height, placement) Accessible seating is not integrated, on a minor sloped area, or inaccessible
	9 <ul style="list-style-type: none"> Non-compliant parking (faded striping, signage)
	10 <ul style="list-style-type: none"> Minor level changes, gaps, or cracks in accessible route Non-compliant drinking fountains

Table 3 Prioritization Designations

SECTION 4 IMPLEMENTATION AND FINANCIAL PLAN

In the previous sections, improvements required to bring facilities into full ADA compliance were identified. The next step in the process is the development of an Implementation and Financial Plan for improvements. This was undertaken through the following efforts:

- Preparing cost estimates for the required improvements
- Reviewing the specific improvements in more detail and categorizing them into two separate groups:
 - Short-term (quick fix) improvements
 - Long-term improvements that require more time, effort, and/or funding

DEVELOPMENT OF COSTS

For the Implementation and Financial Plan, unit costs for each type of improvement were developed. These unit costs were based on local and state data, recent experiences with other agencies and, when available, standard industry costs when local data were not available. It is important to note that the unit costs include across-the-board assumptions that will need to be reviewed prior to the actual improvement being completed.

Table 4.1 provides a summary of the total improvement costs, based on their associated priority, as well as the total estimate of probable cost by improvement type.

Note that the costs included in the table are planning-level estimates; once the projects progress through design, the actual construction opinions of cost will become more refined. Also, as the LeeTran does not have the funding available to make all these improvements at once, which would offer the most economies of scale, cost estimates are reflective of multiple smaller phases that will be more conducive to the funding available.

It should be noted that the estimates are intended to reflect the order-of-magnitude costs for LeeTran’s overall facility improvement needs over the timeframe of the plan; for specific projects nearing implementation, it may be necessary for the LeeTran to conduct a more detailed cost assessment.

Category	Estimate of Cost
Fort Myers Beach Park and Ride	
High	\$9,400
Medium	\$9,900
Low	\$4,100
Total	\$23,400
Quick-Fixes	\$900
Cape Coral Transfer Station	
High	\$9,000
Medium	\$3,500
Low	\$100
Total	\$12,600
Quick-Fixes	\$100

Rosa Parks Transportation Center	
High	\$5,900
Medium	\$22,700
Low	\$10,200
Total	\$38,800
Quick-Fixes	\$3,300
Edison Mall Transfer Station	
High	\$1,100
Medium	\$6,800
Low	\$600
Total	\$8,500
Quick-Fixes	\$2,500
TOTAL COST ESTIMATE	\$83,300

Table 4 Cost Estimate Summary

IMPLEMENTATION PLAN

The Implementation and Financial Plan was developed to identify when the improvements should occur based on the relative priority of the improvements and anticipated level of funding that will be available to address them.

It would be ideal if the LeeTran could take advantage of “piggybacking” needed improvements with other planned facility improvement and renovation projects. This would permit LeeTran to benefit either because the project directly addresses some or all the needed accessibility improvements or the project allows the LeeTran to reduce its improvement costs due to concurrent construction activities. The amount of implementation costs that could potentially be saved by completing the improvements concurrent with planned projects is not known at this time. Therefore, potential cost savings through fund leveraging are not included in the Implementation and Financial Plan at this time. In the future, should the LeeTran desire to estimate the amount of costs that could be reduced through fund leveraging, the cost of the improvements for those impacted improvements may be adjusted.

To develop the initial plan, as listed in the appendices, the list of improvements was sorted by priority. Quick-fix items were assumed to be completed within the current year. High priority items were generally planned to be completed the following year, followed by Medium and Low priority items.

It should be stressed that the Implementation and Financial Plan serves as a general guide for the planning of improvements and that several factors will influence the timing for implementation of specific improvements and the overall cost of the program, including:

- Opportunities for partnering with other agencies or organizations on implementing improvements.

- Specific site conditions at individual locations, including landscaping, utilities, drainage, which can have a significant impact on the type of improvements required and the associated cost.
- Contracting opportunities, including awarding a unit price contract for the implementation of improvements at multiple locations.
- Additional opportunities to relocate or consolidate individual amenities.

On an annual basis, the LeeTran ADA Coordinating Team will supervise the revisions to the ADA Transition Plan and the list of needed improvements will be reviewed against the funding that is available that year to develop a specific work program. As previously mentioned, this will involve development of more detailed cost estimates based on a review of site conditions at individual locations.

The appendices present an example of the phased implementation plan by listing the improvements and their proposed priority and associated probable costs. It should be stressed that the costs are good faith estimates of probable cost, with the ultimate costs dependent upon how the work is undertaken, site conditions at individual locations, and material and labor prices in future years. The number of items that are consolidated, modified, relocated, or removed will also be an important variable, as will be the amount of work that will be the responsibility of other entities.

Due to the unknown level of funding currently available for accessibility improvements, current renovation schedule, and the completion of the quick-fix improvement list, the items recommended for improvement for each year of the program are not necessarily the highest-ranking items on the priority list. However, as the improvement program progresses, high-ranking items that were not initially improved should be included in future years.

It should be noted that the prioritization rankings/implementation plan is just a guide. The number of items improved each year and the specific locations chosen for improvement may vary due to factors such as actual costs of the improvement. As such, the improvements will need to be reviewed and a work program developed specifying the improvements that will be undertaken on an annual basis. The improvements would be undertaken through task orders. It is envisioned that the effort could focus on implementation of improvements within specific sections of the building or would occur with groups of similar improvements, both of which could enable improvements to be implemented more quickly.

It should be stressed that this plan is presented as an overall guide to the implementation of improvements. LeeTran staff will need to review the needed improvements and the available funding on an annual basis to develop the annual improvement program.

LeeTran



Fort Myers Beach Park and Ride

Appendix A: Barriers to Accessibility Assessment Report

February 2022

Prepared by





ID: 7931 **Facility:** Fort Myers Beach Park and Ride

Priority Score 8



Quick Fix No
Built before ADANo

Location: Audio Button

Schedule: 2023

Estimated Cost \$1,000.00

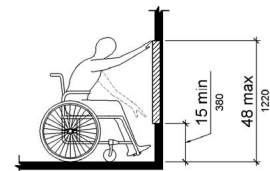
VIOLATIONS

2010 ADA Standards for Accessible Design Codes: §308.2.1

The pedestrian push button is outside of the unobstructed forward reach range at 48.5" above the floor.

RECOMMENDATIONS

Lower the pedestrian push button by 0.5" to meet the acceptable reach range of 48" maximum above the floor.





ID:
7898

Facility:
Fort Myers Beach Park and Ride

Priority Score 5



Quick FixNo
Built before ADANo

Location: Benches

Schedule: 2023

Estimated Cost \$2,500.00

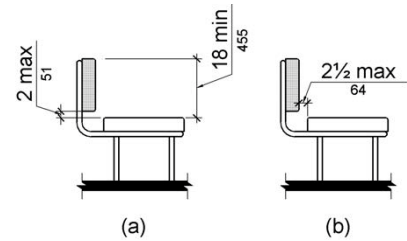
VIOLATIONS

2010 ADA Standards for Accessible Design Codes: §903.4

The benches and stools do not have backs.

RECOMMENDATIONS

Ensure that a minimum of 5% of the seating in each area and of each type are accessible, which entails having back support that is 42" long minimum extending from a point 2" maximum above the seat surface to a point 18" minimum above the seat surface. Install a table that has wheelchair accessible seating with a clear floor space of 30" x 48" with a slope not steeper than 2% and that the tables have sufficient knee and toe clearance.





ID: 7954 **Facility:** Fort Myers Beach Park and Ride

Priority Score 7



Quick FixNo
Built before ADANo

Location: Crosswalks

Schedule: 2023

Estimated Cost \$2,000.00

VIOLATIONS

2010 ADA Standards for Accessible Design Codes: §705

The four crosswalks do not have detectable warnings.

RECOMMENDATIONS

Install detectable warnings that contrast visually with the adjacent surface with either light-on-dark, or dark-on-light. Ensure that the detectable warnings are fully contained within the marked crossings.





ID:
7880

Facility:
Fort Myers Beach Park and Ride

Priority Score 6



Quick FixNo
Built before ADANo

Location: Drinking Fountains

Schedule: 2023

Estimated Cost \$1,000.00

VIOLATIONS

2010 ADA Standards for Accessible Design Codes: §602.4, §602.7

The spout heights of the drinking fountains are 35" and 30" above the floor.

RECOMMENDATIONS

Raise the tall drinking fountain to a minimum spout height of 38" and maximum spout height of 43" above the ground.





ID:
7946

Facility:
Fort Myers Beach Park and Ride

Priority Score 3



Quick Fix Yes
Built before ADA No

Location: Employee Door

Schedule: 2022

Estimated Cost \$100.00

VIOLATIONS

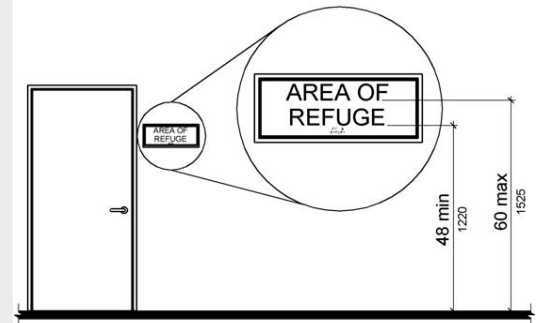
2010 ADA Standards for Accessible Design Codes: §216.2, §703

There are no tactile signs identifying the permanent rooms.

RECOMMENDATIONS

Install tactile signage on the latch side of the doorway at a height of 48" minimum to 60" maximum above the floor, identifying room by name or room number.

Signs shall be Braille with raised lettering and should be placed on the wall in the center of an 18"x18" clear floor space.





ID: 7963 **Facility:** Fort Myers Beach Park and Ride

Priority Score 3



Quick Fix Yes
Built before ADA No

Location: Employee Door

Schedule: 2022

Estimated Cost \$100.00

VIOLATIONS

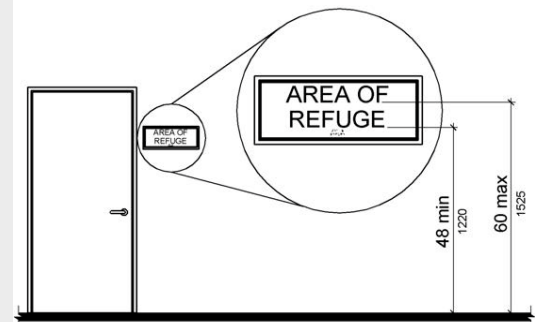
2010 ADA Standards for Accessible Design Codes: §216.2, §703

There are no tactile signs identifying the permanent rooms.

RECOMMENDATIONS

Install tactile signage on the latch side of the doorway at a height of 48" minimum to 60" maximum above the floor, identifying room by name or room number.

Signs shall be Braille with raised lettering and should be placed on the wall in the center of an 18"x18" clear floor space.





ID:
7894

Facility:
Fort Myers Beach Park and Ride

Priority Score 8



Quick Fix Yes
Built before ADA No

Location: Fare Pass Machine

Schedule: 2022

Estimated Cost \$100.00

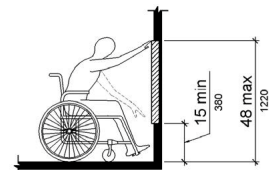
VIOLATIONS

2010 ADA Standards for Accessible Design Codes: §308.2.1

The Braille instructions on the fare pass machine is located at 52" above the floor.

RECOMMENDATIONS

Lower the Braille instructions or install supplementary instructions at an accessible height of 48" maximum above the floor.





ID: 7956 **Facility:** Fort Myers Beach Park and Ride

Priority Score 3



Quick Fix Yes
Built before ADA No

Location: Men's Restroom

Schedule: 2022

Estimated Cost \$100.00

VIOLATIONS

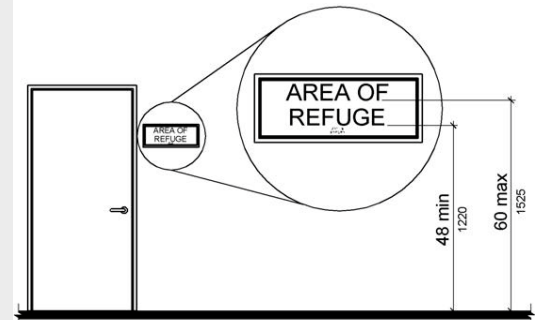
2010 ADA Standards for Accessible Design Codes: §216.4, §703

Doors serving as exits are not marked by tactile signage.

RECOMMENDATIONS

Place a tactile exit sign on the latch side of the doors, that complies with §703.1, §703.2 and §703.5, identifying the exit doors.

Install missing signage at 48" minimum above the floor measured from the baseline of the lowest character and 60" maximum measured from the baseline of the highest character.





ID:
7923

Facility:
Fort Myers Beach Park and Ride

Priority Score 5



Quick Fix Yes
Built before ADA No

Location: Men's Restroom

Schedule: 2022

Estimated Cost \$100.00

VIOLATIONS

2010 ADA Standards for Accessible Design Codes: §604.8.1.2

The door to the accessible water closet is not self closing. Either self-closing hinges are not installed on the door or if installed, they are defective.

RECOMMENDATIONS

Install or reinstall self-closing hinges on the door to ensure that the door is self-closing per the ADA requirements.





ID:
7901

Facility:
Fort Myers Beach Park and Ride

Priority Score 5



Quick FixNo
Built before ADANo

Location: Men's Restroom

Schedule: 2022

Estimated Cost \$1,000.00

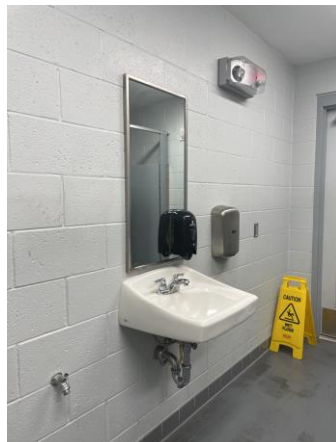
VIOLATIONS

2010 ADA Standards for Accessible Design Codes: §606.3

The sink is 37" above the floor.

RECOMMENDATIONS

Lower the sink to ensure that the higher of the rim is a maximum of 34" above the floor.





ID: 7952 **Facility:** Fort Myers Beach Park and Ride

Priority Score 5



Quick FixNo
Built before ADANo

Location: Men's Restroom

Schedule: 2023

Estimated Cost \$1,000.00

VIOLATIONS

2010 ADA Standards for Accessible Design Codes: §606.3

The sink is 37" above the floor.

RECOMMENDATIONS

Lower the sink to ensure that the higher of the rim is a maximum of 34" above the floor.





ID:
7900

Facility:
Fort Myers Beach Park and Ride

Priority Score 7



Quick Fix Yes
Built before ADA No

Location: Men's Restroom

Schedule: 2022

Estimated Cost \$100.00

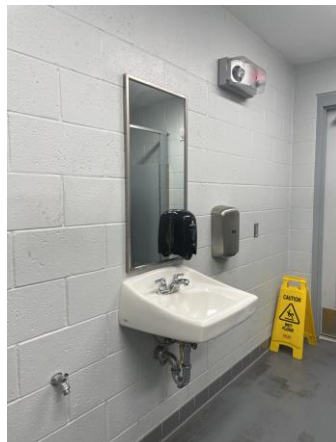
VIOLATIONS

2010 ADA Standards for Accessible Design Codes: §606.5

The pipes under the sink are not insulated from being touched by a person using a wheelchair.

RECOMMENDATIONS

Wrap the pipes beneath the sink with soft protective wrap or plastic.





ID:
7889

Facility:
Fort Myers Beach Park and Ride

Priority Score 3



Quick FixNo
Built before ADANo

Location: Parking

Schedule: 2022

Estimated Cost \$1,000.00

VIOLATIONS

2010 ADA Standards for Accessible Design Codes:FAC/FBC 502.2

The accessible parking spaces are not of sufficient width at 138" wide.

RECOMMENDATIONS

Restripe the accessible parking spaces to a minimum of 144" wide. Ensure that the adjacent access aisles are a minimum of 60" wide. The slope for both accessible parking space and access aisle shall not exceed 2% in every direction.





ID:
7893

Facility:
Fort Myers Beach Park and Ride

Priority Score 3



Quick FixNo
Built before ADANo

Location: Parking

Schedule: 2022

Estimated Cost \$1,000.00

VIOLATIONS

2010 ADA Standards for Accessible Design Codes: FAC/FBC 502.2

The accessible parking spaces are not of sufficient width at 138" wide.

RECOMMENDATIONS

Restripe the accessible parking spaces to a minimum of 144" wide. Ensure that the adjacent access aisles are a minimum of 60" wide. The slope for both accessible parking space and access aisle shall not exceed 2% in every direction.





ID:
7908

Facility:
Fort Myers Beach Park and Ride

Priority Score 3



Quick FixNo
Built before ADANo

Location: Parking

Schedule: 2022

Estimated Cost \$1,000.00

VIOLATIONS

2010 ADA Standards for Accessible Design Codes: §502.4

The accessible parking space has a 3.5% slope.

RECOMMENDATIONS

Resurface the parking space to reduce the slope to a maximum of 2% in all directions.





ID:
7927

Facility:
Fort Myers Beach Park and Ride

Priority Score 3



Quick FixNo
Built before ADANo

Location: Parking

Schedule: 2022

Estimated Cost \$1,000.00

VIOLATIONS

2010 ADA Standards for Accessible Design Codes: §502.4

The accessible parking space has a 3.1% slope.

RECOMMENDATIONS

Resurface the parking space to reduce the slope to a maximum of 2% in all directions.





ID: 7930 **Facility:** Fort Myers Beach Park and Ride

Priority Score 3



Quick FixNo
Built before ADANo

Location: Parking

Schedule: 2022

Estimated Cost \$5,000.00

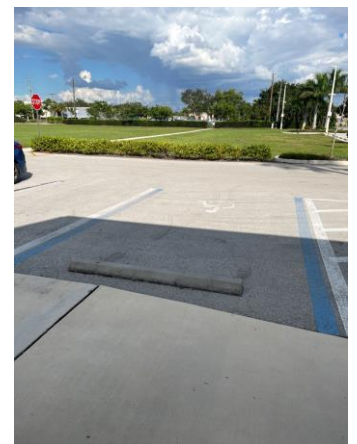
VIOLATIONS

2010 ADA Standards for Accessible Design Codes: §502.4, FAC/FBC 502.2

The accessible parking spaces are not of sufficient width at 139" wide.
The access aisles have running slopes ranging from 2.4% to 3.5%.

RECOMMENDATIONS

Restripe the accessible parking spaces to a minimum of 144" wide adjacent to a 60" wide access aisle. Ensure that the adjacent access aisles are a minimum of 60" wide.
Resurface the access aisles to reduce the slope to a maximum of 2% in all directions.





ID:
7940

Facility:
Fort Myers Beach Park and Ride

Priority Score 8



Quick Fix No
Built before ADANo

Location: Vending Machine

Schedule: 2023

Estimated Cost \$3,000.00

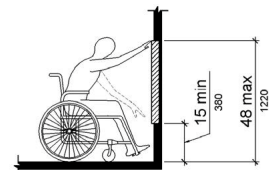
VIOLATIONS

2010 ADA Standards for Accessible Design Codes: §308.2.1

The card swipe is outside of the unobstructed forward reach range at 56" above the floor.

RECOMMENDATIONS

Install an additional vending machine with an accessible card swipe area located at a reach range of 48" maximum above the floor.





ID:
7957

Facility:
Fort Myers Beach Park and Ride

Priority Score 3



Quick Fix Yes
Built before ADA No

Location: Women's Restroom

Schedule: 2022

Estimated Cost \$100.00

VIOLATIONS

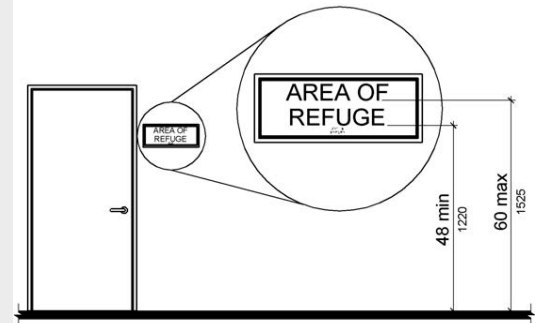
2010 ADA Standards for Accessible Design Codes: §216.4, §703

Doors serving as exits are not marked by tactile signage.

RECOMMENDATIONS

Install missing signage at 48" minimum above the floor measured from the baseline of the lowest character and 60" maximum measured from the baseline of the highest character.

Signs shall be Braille with raised lettering and should be placed on the wall in the center of an 18"x18" clear floor space.





ID:
7924

Facility:
Fort Myers Beach Park and Ride

Priority Score 5



Quick Fix Yes
Built before ADA No

Location: Women's Restroom

Schedule: 2022

Estimated Cost \$100.00

VIOLATIONS

2010 ADA Standards for Accessible Design Codes: §604.8.1.2

The door to the accessible water closet is not self closing. Either self-closing hinges are not installed on the door or if installed, they are defective.

RECOMMENDATIONS

Install or reinstall self-closing hinges on the door to ensure that the door is self-closing per the ADA requirements.





ID:
7903

Facility:
Fort Myers Beach Park and Ride

Priority Score 5



Quick FixNo
Built before ADANo

Location: Women's Restroom

Schedule: 2023

Estimated Cost \$1,000.00

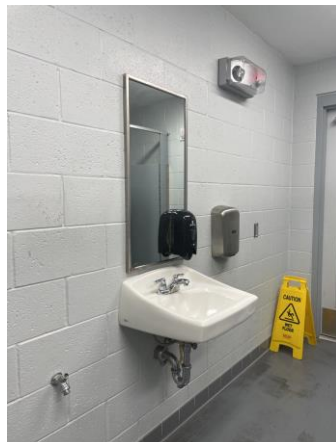
VIOLATIONS

2010 ADA Standards for Accessible Design Codes: §606.3

The sink is 37" above the floor.

RECOMMENDATIONS

Lower the sink to ensure that the higher of the rim is a maximum of 34" above the floor.





ID: 7953 **Facility:** Fort Myers Beach Park and Ride

Priority Score 5



Quick FixNo
Built before ADANo

Location: Women's Restroom

Schedule: 2023

Estimated Cost \$1,000.00

VIOLATIONS

2010 ADA Standards for Accessible Design Codes: §606.3

The sink is 37" above the floor.

RECOMMENDATIONS

Lower the sink to ensure that the higher of the rim is a maximum of 34" above the floor.





ID:
7902

Facility:
Fort Myers Beach Park and Ride

Priority Score 7



Quick Fix Yes
Built before ADA No

Location: Women's Restroom

Schedule: 2022

Estimated Cost \$100.00

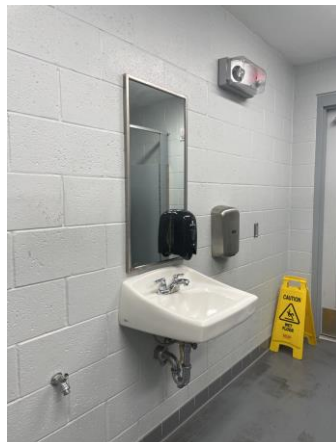
VIOLATIONS

2010 ADA Standards for Accessible Design Codes: §606.5

The pipes under the sink are not insulated from being touched by a person using a wheelchair.

RECOMMENDATIONS

Wrap the pipes beneath the sink with soft protective wrap or plastic.



LeeTran

Cape Coral Transfer Station

Appendix B: Barriers to Accessibility Assessment Report

February 2022



Prepared by





ID: 7915 **Facility:** Cape Coral Transfer Station

Priority Score 3



Quick Fix No
Built before ADANo

Location: 30W Route

Schedule: 2022

Estimated Cost \$2,000.00

VIOLATIONS

2010 ADA Standards for Accessible Design Codes: §403.3

The running slope at the top of the brick path ranges from 4.6% to 6.4%.

RECOMMENDATIONS

Resurface the route to reduce the running slope to a maximum of 5%. Ensure that the cross slope does not exceed 2%.





ID: 7886 **Facility:** Cape Coral Transfer Station

Priority Score 3



Quick FixNo
Built before ADANo

Location: 40N Route

Schedule: 2022

Estimated Cost \$2,000.00

VIOLATIONS

2010 ADA Standards for Accessible Design Codes: §403.3

The brick walking surface has a running slope of 6.8%.

RECOMMENDATIONS

Resurface the route to reduce the running slope to a maximum of 5%.
Ensure that the cross slope has a slope not exceeding 2%.
Or add handrails on either side of the ramp and ensure there are level landings at the top and bottom of the ramp.





ID: 7951 **Facility:** Cape Coral Transfer Station

Priority Score 8



Quick Fix Yes
Built before ADA No

Location: Fare Pass Machine

Schedule: 2022

Estimated Cost \$100.00

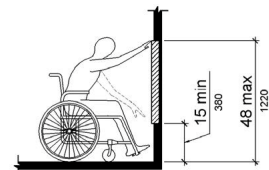
VIOLATIONS

2010 ADA Standards for Accessible Design Codes: §308.2.1

The Braille instructions on the fare pass machine is located at 53" above the floor.

RECOMMENDATIONS

Lower the Braille instructions or install supplementary instructions at an accessible height of 48" maximum above the floor.





ID: 7877 **Facility:** Cape Coral Transfer Station

Priority Score 7



Quick FixNo
Built before ADANo

Location: Route from Parking to the Station

Schedule: 2023

Estimated Cost \$1,000.00

VIOLATIONS

2010 ADA Standards for Accessible Design Codes: §705

The curb ramp and median island do not have detectable warnings.

RECOMMENDATIONS

Install detectable warnings that contrast visually with the adjacent surface with either light-on-dark, or dark-on-light. The detectable warning shall extend the full width of the curb ramp.





ID: 7868 **Facility:** Cape Coral Transfer Station

Priority Score 7



Quick FixNo
Built before ADANo

Location: Route from Parking to the Station

Schedule: 2023

Estimated Cost \$1,500.00

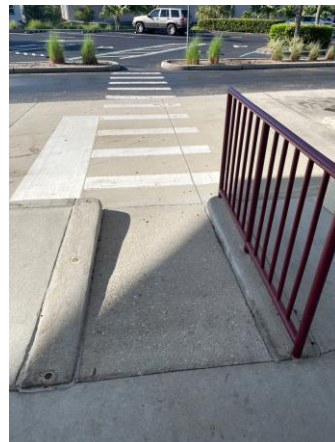
VIOLATIONS

2010 ADA Standards for Accessible Design Codes: §405.2

The running slope of the ramp is 8.7%.
The curb ramp does not have a detectable warning.

RECOMMENDATIONS

Reconstruct the ramp to reduce the running slope to be a maximum of 8.3%. The curb ramp shall have side flares with a maximum slope of 10%. Ensure that the cross slope does not exceed 2%.
Install a detectable warning that is 24" deep, extends the full width of the curb ramp, and contrasts visually with the adjacent surface. Ensure that the landing with a clear length of 36" and maximum slope of 2%.





ID:
7905

Facility:
Cape Coral Transfer Station

Priority Score 3



Quick FixNo
Built before ADANo

Location: SE 8 Ct Street

Schedule: 2022

Estimated Cost \$5,000.00

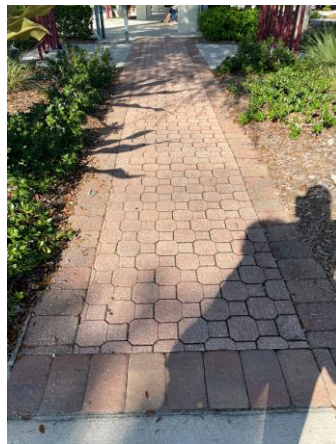
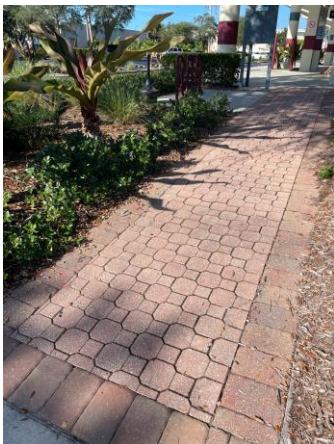
VIOLATIONS

2010 ADA Standards for Accessible Design Codes: §403.3

The brick walking surface has a running slope of 11.5%.

RECOMMENDATIONS

Reconstruct the route to reduce the running slope to a maximum of 5%.
Ensure that the cross slope does not exceed 2%.
Or reduce the running slope to 8.3% with level landings and handrails.





ID:
7873

Facility:
Cape Coral Transfer Station

Priority Score 7



Quick Fix No
Built before ADANo

Location: SE 8 Ct Street

Schedule: 2023

Estimated Cost \$1,000.00

VIOLATIONS

2010 ADA Standards for Accessible Design Codes: §705

The curb ramps do not have detectable warnings.

RECOMMENDATIONS

Install detectable warnings that contrast visually with the adjacent surface with either light-on-dark, or dark-on-light. The detectable warning shall extend the full width of the curb ramp.



LeeTran



Rosa Parks Transportation Center

Appendix C: Barriers to Accessibility Assessment
Report

February 2022

Prepared by





ID: 7879 **Facility:** Rosa Parks Transportation Center

Priority Score 7



Quick Fix No
Built before ADA Unknown

Location: 140N Ramp

Schedule: 2023

Estimated Cost \$1,500.00

VIOLATIONS

2010 ADA Standards for Accessible Design Codes: §405.2, §705

The running slope of the ramp is 10%.
The curb ramp does not have a detectable warning.

RECOMMENDATIONS

Resurface the ramp to reduce the running slope to be a maximum of 8.3%. The cross slope shall not exceed 2%. Install flared sides with a slope not exceeding 10%. Ensure that the landing with a clear length of 36" and maximum slope of 2%.

Install a detectable warning that is 24" deep, extends the full width of the curb ramp, and contrasts visually with the adjacent surface.





ID: 7944 **Facility:** Rosa Parks Transportation Center

Priority Score 8



Quick Fix No
Built before ADA Unknown

Location: Aquafina Vending Machine

Schedule: 2023

Estimated Cost \$3,000.00

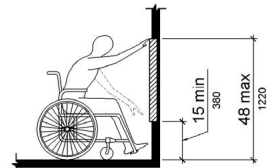
VIOLATIONS

2010 ADA Standards for Accessible Design Codes: §308.2.1

The card swipe is outside of the unobstructed forward reach range at 57" above the floor.

RECOMMENDATIONS

Install an additional vending machine with an accessible card swipe area located at a reach range of 48" maximum above the floor.





ID: 7939 **Facility:** Rosa Parks Transportation Center

Priority Score 8



Quick Fix No
Built before ADA Unknown

Location: Coke Vending Machine

Schedule: 2023

Estimated Cost \$3,000.00

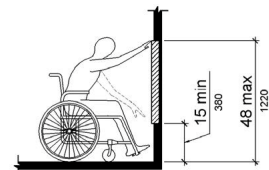
VIOLATIONS

2010 ADA Standards for Accessible Design Codes: §308.2.1

The card swipe is outside of the unobstructed forward reach range at 50" above the floor.

RECOMMENDATIONS

Install an additional vending machine with an accessible card swipe area located at a reach range of 48" maximum above the floor.





ID: 7936 **Facility:** Rosa Parks Transportation Center

Priority Score 3



Quick Fix Yes
Built before ADA Unknown

Location: Employee Door

Schedule: 2022

Estimated Cost \$100.00

VIOLATIONS

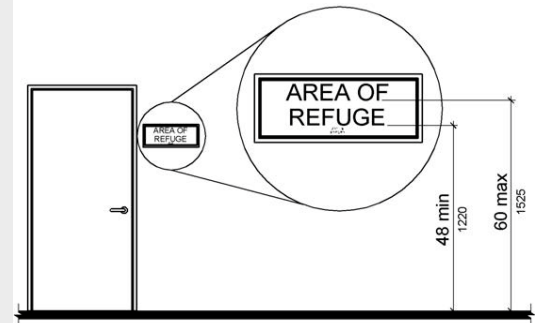
2010 ADA Standards for Accessible Design Codes: §216.2, §703

There are no tactile signs identifying the permanent rooms.

RECOMMENDATIONS

Install tactile signage on the latch side of the doorway at a height of 48" minimum to 60" maximum above the floor, identifying room by name or room number.

Signs shall be Braille with raised lettering and should be placed on the wall in the center of an 18"x18" clear floor space.





ID: 7967 **Facility:** Rosa Parks Transportation Center

Priority Score 3



Quick Fix Yes
Built before ADA Unknown

Location: Employee Door

Schedule: 2022

Estimated Cost \$100.00

VIOLATIONS

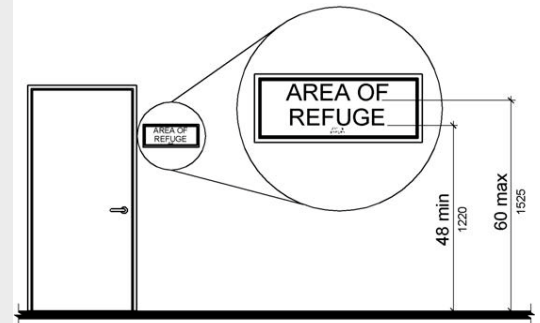
2010 ADA Standards for Accessible Design Codes: §216.2, §703

There are no tactile signs identifying the permanent rooms.

RECOMMENDATIONS

Install tactile signage on the latch side of the doorway at a height of 48” minimum to 60” maximum above the floor, identifying room by name or room number.

Signs shall be Braille with raised lettering and should be placed on the wall in the center of an 18" x 18" clear floor space.





ID:
7968

Facility:
Rosa Parks Transportation Center

Priority Score 8



Quick Fix Yes
Built before ADA Unknown

Location: Fare Pass Machine

Schedule: 2022

Estimated Cost \$100.00

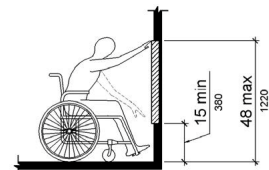
VIOLATIONS

2010 ADA Standards for Accessible Design Codes: §308.2.1

The Braille instructions on the fare pass machine is located at 53" above the floor.

RECOMMENDATIONS

Lower the Braille instructions or install supplementary instructions at an accessible height of 48" maximum above the floor.





ID: 7933 **Facility:** Rosa Parks Transportation Center

Priority Score 3



Quick Fix Yes
Built before ADA Unknown

Location: Greyhound

Schedule: 2022

Estimated Cost \$100.00

VIOLATIONS

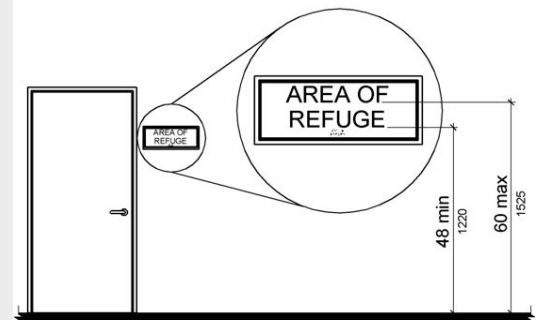
2010 ADA Standards for Accessible Design Codes: §216.2, §703

There are no tactile signs identifying the permanent rooms.

RECOMMENDATIONS

Install tactile signage on the latch side of the doorway at a height of 48" minimum to 60" maximum above the floor, identifying room by name or room number.

Signs shall be Braille with raised lettering and should be placed on the wall in the center of an 18"x18" clear floor space.





ID: 7934 **Facility:** Rosa Parks Transportation Center

Priority Score 3



Quick Fix Yes
Built before ADA Unknown

Location: Greyhound

Schedule: 2022

Estimated Cost \$100.00

VIOLATIONS

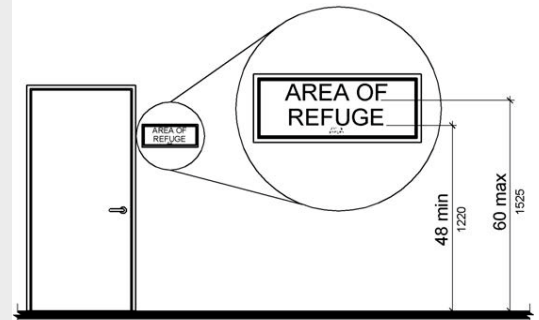
2010 ADA Standards for Accessible Design Codes: §216.2, §703

There are no tactile signs identifying the permanent rooms.

RECOMMENDATIONS

Install tactile signage on the latch side of the doorway at a height of 48" minimum to 60" maximum above the floor, identifying room by name or room number.

Signs shall be Braille with raised lettering and should be placed on the wall in the center of an 18"x18" clear floor space.





ID: 7935 **Facility:** Rosa Parks Transportation Center

Priority Score 7



Quick Fix Yes
Built before ADA Unknown

Location: Greyhound

Schedule: 2022

Estimated Cost \$500.00

VIOLATIONS

2010 ADA Standards for Accessible Design Codes: §705

The curb ramp does not have a detectable warning.

RECOMMENDATIONS

Install detectable warnings that contrast visually with the adjacent surface with either light-on-dark, or dark-on-light. The detectable warning shall extend the full width of the curb ramp.





ID:
7897

Facility:
Rosa Parks Transportation Center

Priority Score 4



Quick Fix No
Built before ADA Unknown

Location: Greyhound Counter

Schedule: 2022

Estimated Cost \$1,000.00

VIOLATIONS

2010 ADA Standards for Accessible Design Codes: §904.4.1

The counter is 49" above the floor.

RECOMMENDATIONS

A portion of the service counter must be no higher than 36" above the floor for a horizontal distance of 36".





ID:
7941

Facility:
Rosa Parks Transportation Center

Priority Score 8



Quick Fix Yes
Built before ADA Unknown

Location: Greyhound Fire Alarm

Schedule: 2022

Estimated Cost \$500.00

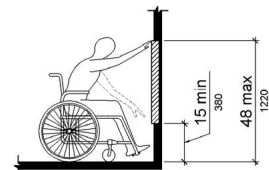
VIOLATIONS

2010 ADA Standards for Accessible Design Codes: §308.2.1

The fire alarm is outside of the unobstructed forward reach range at 49" above the floor.

RECOMMENDATIONS

Lower the fire alarm by 1" to meet the accessible reach range of 48" maximum above the floor.





ID:
7888

Facility:
Rosa Parks Transportation Center

Priority Score 7



Quick FixNo
Built before ADAUnknown

Location: Greyhound Ramps

Schedule: 2023

Estimated Cost \$1,500.00

VIOLATIONS

2010 ADA Standards for Accessible Design Codes: §405.2, §705

The running slope of the ramp is 8.5%.
The curb ramps do not have detectable warnings.

RECOMMENDATIONS

Resurface the ramp to reduce the running slope to be a maximum of 8.3%. The cross slope shall not exceed 2%. Install flared sides with a slope not exceeding 10%.
Install a detectable warning that is 24" deep, extends the full width of the curb ramp, and contrasts visually with the adjacent surface. Ensure that the landing with a clear length of 36" and maximum slope of 2%.





ID: 7911 **Facility:** Rosa Parks Transportation Center

Priority Score 7



Quick Fix No
Built before ADA Unknown

Location: Greyhound side to Leetran

Schedule: 2023

Estimated Cost \$3,500.00

VIOLATIONS

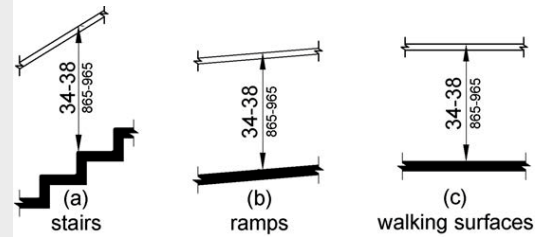
2010 ADA Standards for Accessible Design Codes: §405.2, §505.2

There are no handrails.
The running slope of the ramp is 9.6%.

RECOMMENDATIONS

Install handrails at a minimum height of 34" and maximum height of 38" above the ground. Make sure there are adequate handrail extensions both at the top and bottom of the handrail.

Reconstruct the ramp to reduce the running slope to be a maximum of 8.3%. Ensure that the landing with a clear length of 36" and maximum slope of 2%.





ID:
7917

Facility:
Rosa Parks Transportation Center

Priority Score 7



Quick Fix No
Built before ADA Unknown

Location: Hendry St.

Schedule: 2023

Estimated Cost \$1,000.00

VIOLATIONS

2010 ADA Standards for Accessible Design Codes: §705

The curb ramps do not have detectable warnings.

RECOMMENDATIONS

Install detectable warnings that contrast visually with the adjacent surface with either light-on-dark, or dark-on-light. The detectable warning shall extend the full width of the curb ramp.





ID: 7919 **Facility:** Rosa Parks Transportation Center

Priority Score 7



Quick FixNo
Built before ADAUnknown

Location: Jackson St. and Hendry St.

Schedule: 2023

Estimated Cost \$1,000.00

VIOLATIONS

2010 ADA Standards for Accessible Design Codes: §705

The curb ramps do not have detectable warnings.

RECOMMENDATIONS

Install detectable warnings that contrast visually with the adjacent surface with either light-on-dark, or dark-on-light. The detectable warning shall extend the full width of the curb ramp.





ID: 7918 **Facility:** Rosa Parks Transportation Center

Priority Score 7



Quick FixNo
Built before ADAUnknown

Location: Jackson St. and Hendry St.

Schedule: 2023

Estimated Cost \$3,000.00

VIOLATIONS

2010 ADA Standards for Accessible Design Codes: §405.2, §705

The curb ramp does not have a detectable warning.
The running slope of the curb ramp is 14.7%.

RECOMMENDATIONS

Install a detectable warning that is 24" deep, extends the full width of the curb ramp, and contrasts visually with the adjacent surface. Ensure that the landing with a clear length of 36" and maximum slope of 2%.
Reconstruct the curb ramp to reduce the running slope to be a maximum of 8.3%. The cross slope shall not exceed 2%. Install flared side with a slope not exceeding 10%.





ID: 7909 **Facility:** Rosa Parks Transportation Center

Priority Score 7



Quick FixNo
Built before ADAUnknown

Location: LeeTran Left Side of Terminal

Schedule: 2023

Estimated Cost \$1,000.00

VIOLATIONS

2010 ADA Standards for Accessible Design Codes: §705

The curb ramps do not have detectable warnings.

RECOMMENDATIONS

Install detectable warnings that contrast visually with the adjacent surface with either light-on-dark, or dark-on-light. The detectable warning shall extend the full width of the curb ramp.





ID: 7910 **Facility:** Rosa Parks Transportation Center

Priority Score 7



Quick FixNo
Built before ADAUnknown

Location: LeeTran Left Side of Terminal

Schedule: 2023

Estimated Cost \$1,500.00

VIOLATIONS

2010 ADA Standards for Accessible Design Codes: §405.2, §705

The running slope of the curb ramp is 9.6%.
The curb ramps do not have detectable warnings.

RECOMMENDATIONS

Resurface the curb ramp to reduce the running slope to be a maximum of 8.3%. The cross slope shall not exceed 2%. Install flared side with a slope not exceeding 10%.
Ensure that the landing with a clear length of 36" and maximum slope of 2%. Install a detectable warning that is 24" deep, extends the full width of the curb ramp, and contrasts visually with the adjacent surface.





ID: 7947 **Facility:** Rosa Parks Transportation Center

Priority Score 7



Quick FixNo
Built before ADAUnknown

Location: LeeTran Left Side of Terminal

Schedule: 2023

Estimated Cost \$1,500.00

VIOLATIONS

2010 ADA Standards for Accessible Design Codes: §405.2, §705

The curb ramp does not have a detectable warning.
The running slope of the ramp is 8.7%.

RECOMMENDATIONS

Install a detectable warning that is 24" deep, extends the full width of the curb ramp, and contrasts visually with the adjacent surface. Ensure that the landing with a clear length of 36" and maximum slope of 2%. Resurface the curb ramp to reduce the running slope to be a maximum of 8.3%. The cross slope shall not exceed 2%. Install flared side with a slope not exceeding 10%.





ID: 7965 **Facility:** Rosa Parks Transportation Center

Priority Score 3



Quick Fix Yes
Built before ADA Unknown

Location: Men's Restroom

Schedule: 2022

Estimated Cost \$100.00

VIOLATIONS

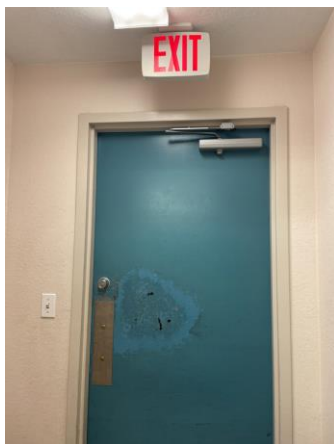
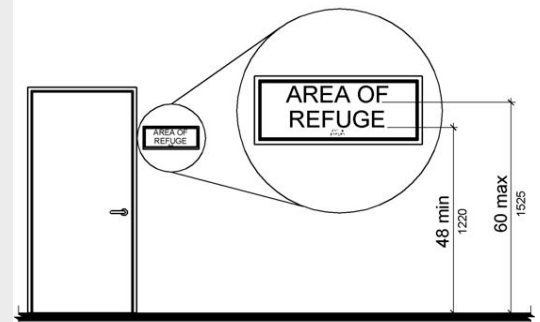
2010 ADA Standards for Accessible Design Codes: §216.4, §703

Doors serving as exits are not marked by tactile signage.

RECOMMENDATIONS

Install missing signage at 48" minimum above the floor measured from the baseline of the lowest character and 60" maximum measured from the baseline of the highest character.

Signs shall be Braille with raised lettering and should be placed on the wall in the center of an 18"x18" clear floor space.





ID: 7942 **Facility:** Rosa Parks Transportation Center

Priority Score 5



Quick Fix Yes
Built before ADA Unknown

Location: Men's Restroom

Schedule: 2022

Estimated Cost \$100.00

VIOLATIONS

2010 ADA Standards for Accessible Design Codes: §604.8.1.2

The door to the accessible water closet is not self closing. Either self-closing hinges are not installed on the door or if installed, they are defective.

RECOMMENDATIONS

Install or reinstall self-closing hinges on the door to ensure that the door is self-closing per the ADA requirements.





ID: 7862 **Facility:** Rosa Parks Transportation Center

Priority Score 5



Quick Fix No
Built before ADA Unknown

Location: Men's Restroom

Schedule: 2023

Estimated Cost \$1,000.00

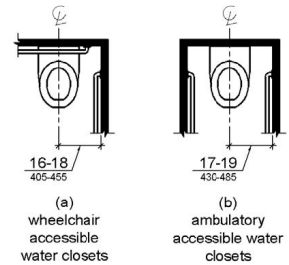
VIOLATIONS

2010 ADA Standards for Accessible Design Codes: §604.2

The toilet is located 19" from the sidewall.

RECOMMENDATIONS

Reposition the toilet to be within 16" minimum and 18" maximum from the sidewall.





ID:
7972

Facility:
Rosa Parks Transportation Center

Priority Score 5



Quick FixNo
Built before ADAUnknown

Location: Men's Restroom

Schedule: 2023

Estimated Cost \$1,000.00

VIOLATIONS

2010 ADA Standards for Accessible Design Codes: §604.6

The flush control is located on the wall side of the toilet.

RECOMMENDATIONS

Either make the toilet flush automatically or relocate the flush control to be operated on the open side of the toilet.





ID: 7925 **Facility:** Rosa Parks Transportation Center

Priority Score 7



Quick Fix Yes
Built before ADA Unknown

Location: Men's Restroom

Schedule: 2022

Estimated Cost \$100.00

VIOLATIONS

2010 ADA Standards for Accessible Design Codes: §603.3

The mirror is too high to be accessible at 41" above the floor.

RECOMMENDATIONS

Lower the mirror to ensure that the bottom edge is a maximum height of 40" above the floor.





ID: 7937 **Facility:** Rosa Parks Transportation Center

Priority Score 7



Quick Fix Yes
Built before ADA Unknown

Location: Men's Restroom

Schedule: 2022

Estimated Cost \$100.00

VIOLATIONS

2010 ADA Standards for Accessible Design Codes: §603.3

The mirror is too high to be accessible at 41" above the floor.

RECOMMENDATIONS

Lower the mirror to ensure that the bottom edge is a maximum height of 40" above the floor.





ID:
7859

Facility:
Rosa Parks Transportation Center

Priority Score 8



Quick Fix Yes
Built before ADA Unknown

Location: Men's Restroom

Schedule: 2022

Estimated Cost \$100.00

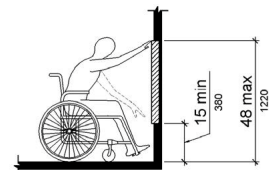
VIOLATIONS

2010 ADA Standards for Accessible Design Codes: §308.2.1

The toilet paper dispenser is outside of the unobstructed forward reach range at 49" above the floor.

RECOMMENDATIONS

Lower the toilet paper dispense by 1" to meet the acceptable reach range of 48" maximum above the floor.





ID:
7961

Facility:
Rosa Parks Transportation Center

Priority Score 8



Quick Fix Yes
Built before ADA Unknown

Location: Men's Restroom

Schedule: 2022

Estimated Cost \$100.00

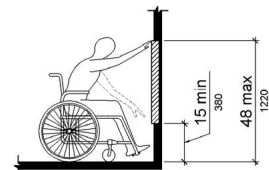
VIOLATIONS

2010 ADA Standards for Accessible Design Codes: §308.2.1

The changing table is outside of the unobstructed forward reach range at 53.5" above the floor.

RECOMMENDATIONS

Lower the changing table by 5.5" to meet the accessible reach range of 48" maximum above the floor.





ID:
7970

Facility:
Rosa Parks Transportation Center

Priority Score 8



Quick Fix Yes
Built before ADA Unknown

Location: Men's Restroom

Schedule: 2022

Estimated Cost \$100.00

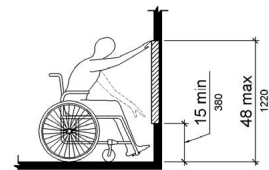
VIOLATIONS

2010 ADA Standards for Accessible Design Codes: §308.2.1

The hook is outside of the unobstructed forward reach range at 58" above the floor.

RECOMMENDATIONS

Lower the hook by 10" to meet the accessible reach range of 48" maximum above the floor.





ID:
7906

Facility:
Rosa Parks Transportation Center

Priority Score 3



Quick Fix No
Built before ADA Unknown

Location: Parking

Schedule: 2022

Estimated Cost \$1,000.00

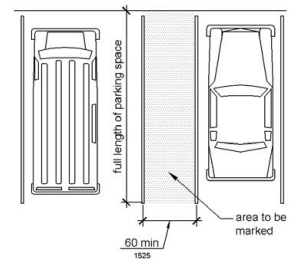
VIOLATIONS

2010 ADA Standards for Accessible Design Codes: §502.3

The access aisles are not of sufficient width at 58" wide.

RECOMMENDATIONS

Repaint the accessible parking spaces and access aisles so that all accessible car parking spaces are a minimum of 144" wide and their adjacent access aisles are a minimum of 60" wide.





ID:
7907

Facility:
Rosa Parks Transportation Center

Priority Score 3



Quick FixNo
Built before ADAUnknown

Location: Parking

Schedule: 2022

Estimated Cost \$2,000.00

VIOLATIONS

2010 ADA Standards for Accessible Design Codes: §502.4

The accessible parking space has a 2.4% slope and the access aisle has a 3% running slope.

RECOMMENDATIONS

Resurface the parking space and access aisle to reduce the slope to a maximum of 2% in all directions.





ID: 7921 **Facility:** Rosa Parks Transportation Center

Priority Score 3



Quick FixNo
Built before ADAUnknown

Location: Route from Jackson St.

Schedule: 2022

Estimated Cost \$1,000.00

VIOLATIONS

2010 ADA Standards for Accessible Design Codes: §403.3

The route from Jackson St. has a running slope of 5.7%.

RECOMMENDATIONS

Resurface the route to reduce the running slope to a maximum of 5%.
Ensure that the cross slope does not exceed 2%.
Or add handrails on either side of the ramp and ensure there are level landings at the top and bottom of the ramp.





ID:
7882

Facility:
Rosa Parks Transportation Center

Priority Score 7



Quick Fix No
Built before ADA Unknown

Location: Route from Jackson St.

Schedule: 2023

Estimated Cost \$1,000.00

VIOLATIONS

2010 ADA Standards for Accessible Design Codes: §705

The curb ramps do not have detectable warnings.

RECOMMENDATIONS

Install detectable warnings that contrast visually with the adjacent surface with either light-on-dark, or dark-on-light. The detectable warning shall extend the full width of the curb ramp.





ID:
7881

Facility:
Rosa Parks Transportation Center

Priority Score 7



Quick Fix No
Built before ADA Unknown

Location: Route from Jackson St.

Schedule: 2023

Estimated Cost \$2,000.00

VIOLATIONS

2010 ADA Standards for Accessible Design Codes: §405.2, §705

The curb ramps do not have detectable warnings.
The running slope of the curb ramp is 9%.

RECOMMENDATIONS

Install a detectable warning that is 24" deep, extends the full width of the curb ramp, and contrasts visually with the adjacent surface.
Ensure that the landing with a clear length of 36" and maximum slope of 2%. Resurface the curb ramp to reduce the running slope to be a maximum of 8.3%. The cross slope shall not exceed 2%.





ID: 7932 **Facility:** Rosa Parks Transportation Center

Priority Score 8



Quick Fix No
Built before ADA Unknown

Location: Snack Vending Machine

Schedule: 2023

Estimated Cost \$3,000.00

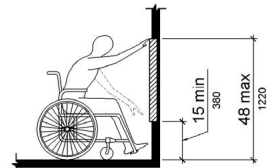
VIOLATIONS

2010 ADA Standards for Accessible Design Codes: §308.2.1

The card swipe and selection buttons are outside of the unobstructed forward reach range at 58.5" and 54" above the floor.

RECOMMENDATIONS

Install an additional vending machine with an accessible card swipe area located at a reach range of 48" maximum above the floor.





ID:
7913

Facility:
Rosa Parks Transportation Center

Priority Score 3



Quick Fix Yes
Built before ADA Unknown

Location: Terminal

Schedule: 2022

Estimated Cost \$200.00

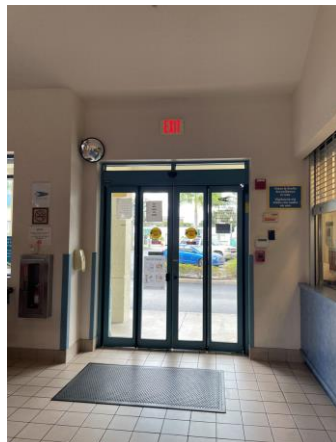
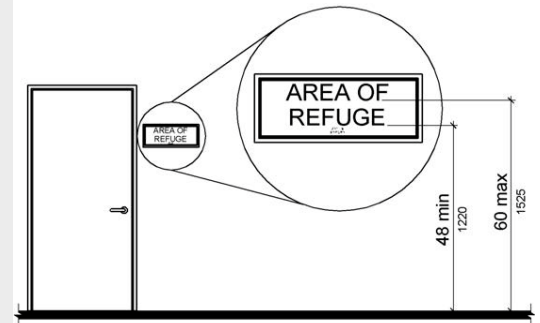
VIOLATIONS

2010 ADA Standards for Accessible Design Codes: §216.4, §703

Doors serving as exits are not marked by tactile signage.

RECOMMENDATIONS

Place a tactile exit sign on the right side of the right hand door, that complies with §703.1, §703.2 and §703.5, identifying the exit doors. Install missing signage at 48" minimum above the floor measured from the baseline of the lowest character and 60" maximum measured from the baseline of the highest character.





ID: 7950 **Facility:** Rosa Parks Transportation Center

Priority Score 3



Quick Fix Yes
Built before ADA Unknown

Location: Women's Restroom

Schedule: 2022

Estimated Cost \$100.00

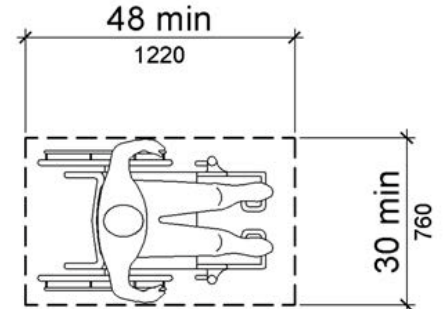
VIOLATIONS

2010 ADA Standards for Accessible Design Codes: §305.2

The clear floor space at the hand dryer is obstructed.

RECOMMENDATIONS

Relocate the garbage can to ensure that there is a 30"x48" clear floor space in front of the hand dryer.





ID: 7966 **Facility:** Rosa Parks Transportation Center

Priority Score 3



Quick Fix Yes
Built before ADA Unknown

Location: Women's Restroom

Schedule: 2022

Estimated Cost \$100.00

VIOLATIONS

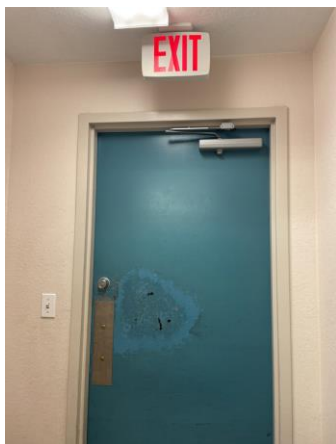
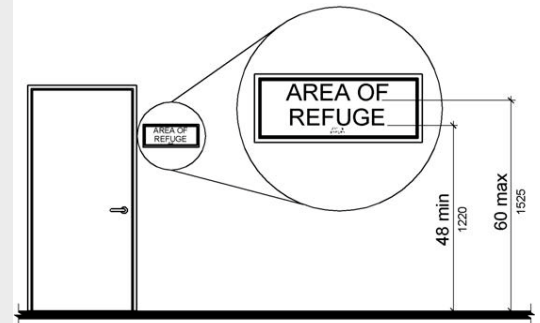
2010 ADA Standards for Accessible Design Codes: §216.4, §703

Doors serving as exits are not marked by tactile signage.

RECOMMENDATIONS

Install missing signage at 48" minimum above the floor measured from the baseline of the lowest character and 60" maximum measured from the baseline of the highest character.

Signs shall be Braille with raised lettering and should be placed on the wall in the center of an 18"x18" clear floor space.





ID: 7866 **Facility:** Rosa Parks Transportation Center

Priority Score 5



Quick Fix Yes
Built before ADA Unknown

Location: Women's Restroom

Schedule: 2022

Estimated Cost \$100.00

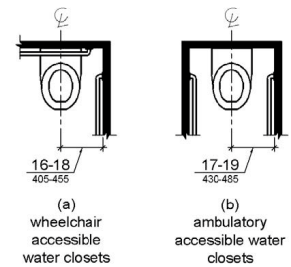
VIOLATIONS

2010 ADA Standards for Accessible Design Codes: §604.2

The toilet is located 19" from the sidewall.

RECOMMENDATIONS

Reposition the toilet to be within 16" minimum and 18" maximum from the sidewall.





ID: 7943 **Facility:** Rosa Parks Transportation Center

Priority Score 5



Quick Fix Yes
Built before ADA Unknown

Location: Women's Restroom

Schedule: 2022

Estimated Cost \$100.00

VIOLATIONS

2010 ADA Standards for Accessible Design Codes: §604.8.1.2

The door to the accessible water closet is not self closing. Either self-closing hinges are not installed on the door or if installed, they are defective.

RECOMMENDATIONS

Install or reinstall self-closing hinges on the door to ensure that the door is self-closing per the ADA requirements.





ID:
7973

Facility:
Rosa Parks Transportation Center

Priority Score 5



Quick FixNo
Built before ADAUnknown

Location: Women's Restroom

Schedule: 2023

Estimated Cost \$1,000.00

VIOLATIONS

2010 ADA Standards for Accessible Design Codes: §604.6

The flush control is located on the wall side of the toilet.

RECOMMENDATIONS

Either make the toilet flush automatically or relocate the flush control to be operated on the open side of the toilet.





ID: 7926 **Facility:** Rosa Parks Transportation Center

Priority Score 7



Quick Fix Yes
Built before ADA Unknown

Location: Women's Restroom

Schedule: 2022

Estimated Cost \$100.00

VIOLATIONS

2010 ADA Standards for Accessible Design Codes: §603.3

The mirror is too high to be accessible at 41" above the floor.

RECOMMENDATIONS

Lower the mirror to ensure that the bottom edge is a maximum height of 40" above the floor.





ID: 7938 **Facility:** Rosa Parks Transportation Center

Priority Score 7



Quick Fix Yes
Built before ADA Unknown

Location: Women's Restroom

Schedule: 2022

Estimated Cost \$100.00

VIOLATIONS

2010 ADA Standards for Accessible Design Codes: §603.3

The mirror is too high to be accessible at 41" above the floor.

RECOMMENDATIONS

Lower the mirror to ensure that the bottom edge is a maximum height of 40" above the floor.





ID:
7863

Facility:
Rosa Parks Transportation Center

Priority Score 8



Quick Fix Yes
Built before ADA Unknown

Location: Women's Restroom

Schedule: 2022

Estimated Cost \$100.00

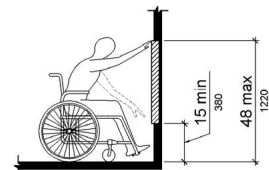
VIOLATIONS

2010 ADA Standards for Accessible Design Codes: §308.2.1

The toilet paper dispenser is outside of the unobstructed forward reach range at 49" above the floor.

RECOMMENDATIONS

Lower the toilet paper dispenser by 1" to meet the acceptable reach range of 48" maximum above the floor.





ID: 7962 **Facility:** Rosa Parks Transportation Center

Priority Score 8



Quick Fix Yes
Built before ADA Unknown

Location: Women's Restroom

Schedule: 2022

Estimated Cost \$100.00

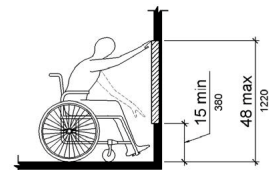
VIOLATIONS

2010 ADA Standards for Accessible Design Codes: §308.2.1

The changing table is outside of the unobstructed forward reach range at 53.5" above the floor.

RECOMMENDATIONS

Lower the changing table by 5.5" to meet the accessible reach range of 48" maximum above the floor.





ID:
7971

Facility:
Rosa Parks Transportation Center

Priority Score 8



Quick Fix Yes
Built before ADA Unknown

Location: Women's Restroom

Schedule: 2022

Estimated Cost \$100.00

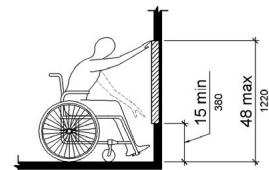
VIOLATIONS

2010 ADA Standards for Accessible Design Codes: §308.2.1

The hook is outside of the unobstructed forward reach range at 58" above the floor.

RECOMMENDATIONS

Lower the hook by 10" to meet the accessible reach range of 48" maximum above the floor.



LeeTran



Edison Mall Transfer Station

Appendix D: Barriers to Accessibility Assessment Report

February 2022

Prepared by





ID:
7874

Facility:
Edison Mall Transfer Station

Priority Score 7



Quick Fix No
Built before ADA Unknown

Location: 110E Ramp

Schedule: 2023

Estimated Cost \$1,000.00

VIOLATIONS

2010 ADA Standards for Accessible Design Codes: §405.2

The running slope of the ramp is 9.4%.

RECOMMENDATIONS

Reconstruct the ramp to reduce the running slope to be a maximum of 8.3%. The cross slope shall not exceed 2%. Install flared sides with a slope not exceeding 10%.

Ensure that the detectable warnings extend the full width of the curb ramp. Ensure that the landing with a clear length of 36" and maximum slope of 2%.





ID: 7895 **Facility:** Edison Mall Transfer Station

Priority Score 7



Quick Fix Yes
Built before ADA Unknown

Location: 140S Ramps

Schedule: 2022

Estimated Cost \$500.00

VIOLATIONS

2010 ADA Standards for Accessible Design Codes: §705

The detectable warning is faded.

RECOMMENDATIONS

Replace the detectable warning with one that visually contrasts with adjacent surface either light-on-dark or dark-on-light.





ID: 7922 **Facility:** Edison Mall Transfer Station

Priority Score 3



Quick Fix Yes
Built before ADA Unknown

Location: Back Door

Schedule: 2022

Estimated Cost \$100.00

VIOLATIONS

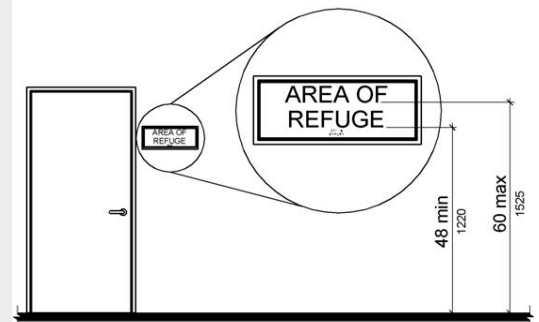
2010 ADA Standards for Accessible Design Codes: §216.2, §703

There are no tactile signs identifying the permanent rooms.

RECOMMENDATIONS

Install tactile signage on the latch side of the doorway at a height of 48" minimum to 60" maximum above the floor, identifying room by name or room number.

Signs shall be Braille with raised lettering and should be placed on the wall in the center of an 18"x18" clear floor space.





ID: 7904 **Facility:** Edison Mall Transfer Station

Priority Score 7



Quick Fix Yes
Built before ADA Unknown

Location: Crosswalk by Macy's and Dillard's

Schedule: 2022

Estimated Cost \$500.00

VIOLATIONS

2010 ADA Standards for Accessible Design Codes: §705

The detectable warning is uplifting.

RECOMMENDATIONS

Replace the detectable warning.





ID:
7896

Facility:
Edison Mall Transfer Station

Priority Score 3



Quick FixNo
Built before ADAUnknown

Location: Crosswalks

Schedule: 2022

Estimated Cost \$1,000.00

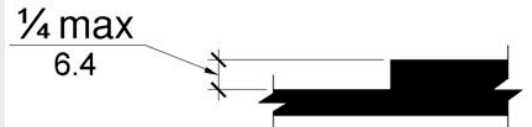
VIOLATIONS

2010 ADA Standards for Accessible Design Codes:§302.1

The changes in vertical elevation in the accessible route are tripping hazards for users.

RECOMMENDATIONS

Repave the area of the sidewalk to remove the bump. Ensure that the change in level does not exceed 1/4".





ID:
7964

Facility:
Edison Mall Transfer Station

Priority Score 9



Location: Crosswalks

Schedule: 2022

Estimated Cost \$500.00

Quick Fix Yes
Built before ADA Unknown

VIOLATIONS

2010 ADA Standards for Accessible Design Codes: General Guidance

The crosswalk paint is faded.

RECOMMENDATIONS

Repaint the crosswalk.





ID: 7852 **Facility:** Edison Mall Transfer Station

Priority Score 7



Quick Fix No
Built before ADA Unknown

Location: Detectable Warning

Schedule: 2023

Estimated Cost \$1,000.00

VIOLATIONS

2010 ADA Standards for Accessible Design Codes: §705

The detectable warnings are cracked and uplifting which may act as a tripping hazard.

RECOMMENDATIONS

Replace the detectable warning. Ensure that it contrasts visually with the adjacent surface with either light-on-dark, or dark-on-light.

Ensure that the change in level does not exceed 1/4" and that the detectable warning is flush with the surface of the sidewalk to ensure that it does not act as a tripping hazard.





ID:
7857

Facility:
Edison Mall Transfer Station

Priority Score 7



Quick Fix No
Built before ADA Unknown

Location: Detectable Warnings

Schedule: 2023

Estimated Cost \$1,000.00

VIOLATIONS

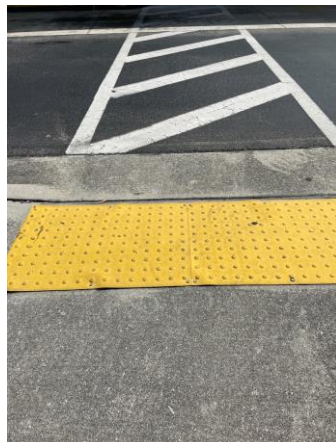
2010 ADA Standards for Accessible Design Codes: §705

The detectable warnings are faded and uplifting.

RECOMMENDATIONS

Replace the detectable warning. Ensure that it contrasts visually with the adjacent surface with either light-on-dark, or dark-on-light.

Ensure that the change in level does not exceed 1/4" and that the detectable warning is flush with the surface of the sidewalk to ensure that it does not act as a tripping hazard.





ID:
7920

Facility:
Edison Mall Transfer Station

Priority Score 8



Quick Fix Yes
Built before ADA Unknown

Location: Fare Pass Machine

Schedule: 2022

Estimated Cost \$100.00

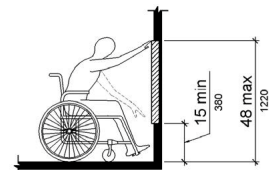
VIOLATIONS

2010 ADA Standards for Accessible Design Codes: §308.2.1

The Braille instructions on the fare pass machine is located at 54" above the floor.

RECOMMENDATIONS

Lower the Braille instructions or install supplementary instructions at an accessible height of 48" maximum above the floor.





ID: 7884 **Facility:** Edison Mall Transfer Station

Priority Score 7



Quick Fix Yes
Built before ADA Unknown

Location: Ramp at Public Storage

Schedule: 2022

Estimated Cost \$500.00

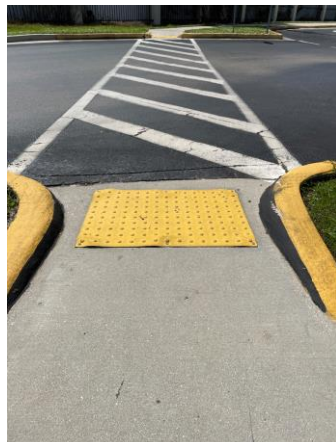
VIOLATIONS

2010 ADA Standards for Accessible Design Codes: §705

The detectable warning is uplifting.

RECOMMENDATIONS

Replace the detectable warning. Ensure that it extends the full width of the curb ramp.





ID: 7854 **Facility:** Edison Mall Transfer Station

Priority Score 5



Quick Fix Yes
Built before ADA Unknown

Location: Restroom

Schedule: 2022

Estimated Cost \$100.00

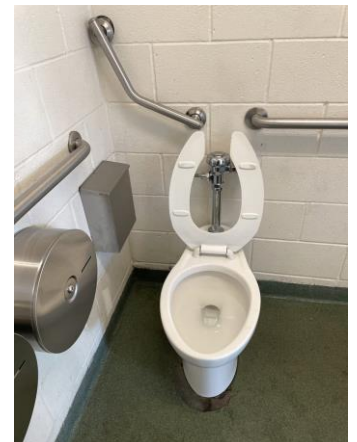
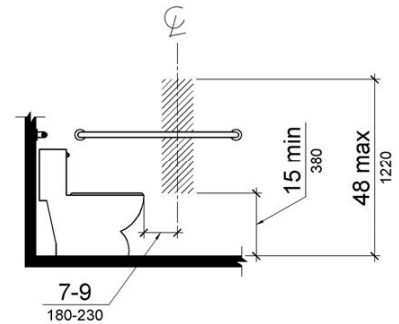
VIOLATIONS

2010 ADA Standards for Accessible Design Codes: §604.7

The center of the toilet paper dispenser is located at the rim of the toilet.

RECOMMENDATIONS

Remount the toilet paper dispenser to 7" minimum and 9" maximum in front of the water closet measured to the centerline of the dispenser. The outlet of the dispenser shall be 15" minimum and 48" maximum above the floor.





ID: 7856 **Facility:** Edison Mall Transfer Station

Priority Score 5



Quick FixNo
Built before ADAUnknown

Location: Restroom

Schedule: 2023

Estimated Cost \$1,000.00

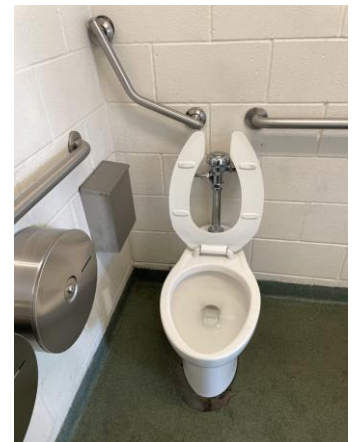
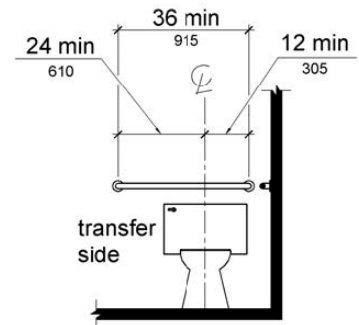
VIOLATIONS

2010 ADA Standards for Accessible Design Codes: §604.5.2

The rear grab bar does not meet the minimum length requirement at 19" long.

RECOMMENDATIONS

Replace the rear grab bar with one that is a minimum of 36" long and extends from the centerline of the water closet 12" minimum on one side and 24" minimum on the other. Note: The diagonal grab bar can be removed.





ID: 7929 **Facility:** Edison Mall Transfer Station

Priority Score 5



Quick FixNo
Built before ADAUnknown

Location: Restroom

Schedule: 2023

Estimated Cost \$1,000.00

VIOLATIONS

2010 ADA Standards for Accessible Design Codes: §605.2

The urinal is 18" above the floor.

RECOMMENDATIONS

Lower the urinal to a maximum height of 17" above the floor.





ID: 7891 **Facility:** Edison Mall Transfer Station

Priority Score 7



Quick Fix Yes
Built before ADA Unknown

Location: Restroom

Schedule: 2022

Estimated Cost \$100.00

VIOLATIONS

2010 ADA Standards for Accessible Design Codes: §606.5

The pipes under the sink are not insulated from being touched by a person using a wheelchair.

RECOMMENDATIONS

Wrap the pipes beneath the sink with soft protective wrap or plastic.





ID: 7892 **Facility:** Edison Mall Transfer Station

Priority Score 7



Quick Fix Yes
Built before ADA Unknown

Location: Restroom

Schedule: 2022

Estimated Cost \$100.00

VIOLATIONS

2010 ADA Standards for Accessible Design Codes: §603.3

The mirror is too high to be accessible at 41" above the floor.

RECOMMENDATIONS

Lower the mirror to ensure that the bottom edge is a maximum height of 40" above the floor.

