

CONSTRUCTION PLANS

FOR



GALT NATURE PRESERVE VARIOUS BOARDWALK REPAIRS

FEMA DI : 1291096

FEMA PROJECT # : 739393

SECTION 35, TOWNSHIP 45 S., RANGE 22 E.

LEE COUNTY, FLORIDA

INDEX OF PLANS

SHEET NO.	DESCRIPTION
C01	COVER
C02	GENERAL NOTES & ABBREVIATIONS
C03	AERIAL KEY MAP
C04	FLUCFCS MAP
C05	SOILS MAP
C06 - C08	EXISTING CONDITIONS AND DEMOLITION PLAN
C09	EROSION CONTROL PLAN
C10 - C12	SITE PLAN & PAVING, GRADING, AND DRAINAGE PLAN



LOCATION MAP

0 1000 2000 4000
 INTENDED DISPLAY SCALE:
 22"X34" PLAN 1"=2000'
 11"X17" PLAN 1"=4000'

FEBRUARY 2025

This item has been digitally signed and sealed by Jordan L. Varble, P.E., on the date adjacent to the seal.
 Printed copies of this document are not considered signed and sealed and the signature must be verified on any electronic copies.

OWNER

LEE COUNTY
 2115 SECOND ST
 FORT MYERS, FL 33901
 PHONE: (239) 533-2221
 FAX: (239) 485-2262

SITE ADDRESS

3661 STRINGFELLOW RD.
 ST. JAMES CITY, FL 33956

STRAP NUMBERS

35-45-22-00-00001.0000

SIZE OF PARCEL

261.71 ACRES

ZONING

EC

BOARD OF COUNTY COMMISSIONERS

KEVIN RUANE	DISTRICT 1
CECIL PENDERGRASS	DISTRICT 2
DAVID MULICKA	DISTRICT 3
BRIAN HAMMAN	DISTRICT 4
MIKE GREENWELL	DISTRICT 5

COUNTY MANAGER

DAVE HARNER

ASSISTANT COUNTY MANAGER

PETER WINTON
 CHRISTINE BRADY
 GLEN SALTER
 MARC MORA
 ROBERT CODIE

FACILITIES CONSTRUCTION & MANAGEMENT

EHAB GUIRGUIS, P.E.

WEILER ENGINEERING CORPORATION



WEILER ENGINEERING CORP.
 201 WEST MARION AVENUE SUITE
 1306 PUNTA GORDA, FLORIDA 33950
 PHONE: (941) 505-1700
 FAX: (941) 505-1702



— An Apex Company —

JOHNSON ENGINEERING, LLC.
 2122 JOHNSON STREET
 FORT MYERS, FLORIDA 33901
 PHONE: (239) 334-0046
 E.R. #642 & L.B. #642

REGISTERED PROFESSIONAL ENGINEER
 FLORIDA LICENSE NO. 81414

JORDAN LEVI VARBLE, PE

DATE



NOTICE TO ALL CONTRACTORS
 IT'S THE LAW IN FLORIDA
 2 BUSINESS DAYS BEFORE
 YOU DIG
 CALL SUNSHINE
 1-800-432-4770
 STATE, COUNTIES & CITIES
 ARE "NOT" PART OF THE
 ONE CALL SYSTEM THEY
 MUST BE CALLED
 INDIVIDUALLY.

SHEET NUMBER
C01

ABBREVIATIONS

AC	ACRE
ALT	ALTERNATE
APPROX.	APPROXIMATE
ASB	ASBESTOS
BM	BENCH MARK
BLDG	BUILDING
BOT	BOTTOM
CB	CATCH BASIN
CF	CUBIC FEET
CFM	CUBIC FEET PER MINUTE
CI	CAST IRON
QIP	CAST IRON PIPE
CJ	CONSTRUCTION JOINT
CMP	CORRUGATED METAL PIPE
CO	CLEANOUT
CV	CHECK VALVE
CF	CUBIC FOOT
CY	CUBIC YARD
CL	CENTER LINE
CLKG	CAULKING
CLF	CHAIN LINK FENCE
COL	COLUMN, COLOR
CONC	CONCRETE
CONST	CONSTRUCTION
CONT	CONTINUOUS
CONTR	CONTRACTOR
CTRS	CENTERS
CU	COPPER
CU, IN.	CUBIC INCH
DIA., Ø	DIAMETER
DIAG	DIAGONAL
DM	DIMENSION
DIST.	DISTANCE
DIP	DUCTILE IRON PIPE
DR	DRAINAGE EASEMENT
DWG	DRAWING
E	EAST
EL/ELEV	ELEVATION
EQUIP	EQUIPMENT
ERCP	ELLIPTICAL REINFORCED CONCRETE PIPE
ESMT	EASEMENT
EX	EXISTING
FF	FINISHED FLOOR
FFE	FINISHED FLOOR ELEVATION
FM	FORCE MAIN
FDC	FIRE DEPARTMENT CONNECTION
FDN	FOUNDATION
FIN	FINISH
FRP	FIBERGLASS REINFORCED PLASTIC
FT	FEET
G	NATURAL GAS
GC	GENERAL CONTRACTOR
GI	GALVANIZED IRON
GPM	GALLONS PER MINUTE
GV	GATE VALVE
GA	GAUGE
GAL	GALLON
GALV	GALVANIZED
GR	GRADE
HDPE	HIGH DENSITY POLYETHYLENE
HOR	HORIZONTAL
HVD	HYDRANT
ID	INSIDE DIAMETER
IDD	IONA DRAINAGE DISTRICT
INV	INVERT
IRR	IRRIGATION
LAE	LAKE ACCESS EASEMENT
LCUE	LEE COUNTY UTILITY EASEMENT
LF	LINEAL FEET
LME	LAKE MAINTENANCE EASEMENT
LMT	LAKE MAINTENANCE TRACT
MGD	MILLION GALLONS PER DAY
MH	MANHOLE
MJ	MECHANICAL JOINT
MAX	MAXIMUM
MECH	MECHANICAL
MES	MITERED END SECTION
MFR	MANUFACTURER
MIN	MINIMUM
MISC	MISCELLANEOUS
N	NORTH
NE	NORTHEAST
NW	NORTHWEST
NPW	NON POTABLE WATER
NTS	NOT TO SCALE
NUM/#	NUMBER
NOM	NOMINAL
OC	NATURAL GAS ON CENTERS
OCEW	ON CENTER EACH WAY
OD	OUTSIDE DIAMETER
OCF	POUNDS PER CUBIC FOOT
PSF	POUNDS PER SQUARE FOOT
PV	PLUG VALVE
PSI	POUNDS PER SQUARE INCH
PVC	POLYVINYL CHLORIDE
POLY, PE	POLYETHYLENE
PAVT	PAVEMENT
PC	POINT OF CURVATURE
PGL	PROPOSED GRADE LINE
P	PROPERTY LINE
PLBG	PLUMBING
PLWD	PLYWOOD
PW	POTABLE WATER
PT	POINT OF TANGENCY
PUE	PUBLIC UTILITY EASEMENT
PVI	POINT OF VERTICAL INTERSECTION
QJAN	QUANTITY
R	RADIUS
RD	ROAD
RCP	REINFORCED CONCRETE PIPE
REQ'D	REQUIRED
ROW	RIGHT OF WAY
RU	REUSE LINE
R/W	RIGHT OF WAY
S	SOUTH
SE	SOUTHEAST
SW	SOUTHWEST
SS	SANITARY SEWER
SAN	SANITARY
SCH	SCHEDULE
SECT	SECTION
SEW	SEWER
SH	SHEET
SPEC	SPECIFICATION
SQ	SQUARE
ST	STREET
STA	STATION
STL	STEEL
STD	STANDARD
SUR	SURFACE
SYM	SYMMETRICAL
TOE	TOE OF SLOPE
TOB	TOP OF BANK
THK	THICK
TEL	TELEPHONE
TEMP	TEMPERATURE
TRANS	TRANSFORMER
TYP	TYPICAL
UE	UTILITY EASEMENT
VERT	VERTICAL
W	WATER
WM	WATER MAIN
W/	WITH
W/O	WITHOUT
WD	WOOD
WT	WEIGHT
WV	WATER VALVE
WH	WALL HYDRANT

SYMBOLS

	GATE VALVE		IRRIGATION SERVICE (DOUBLE)
	TEE ASSEMBLY		IRRIGATION SERVICE (SINGLE)
	REDUCER		SEWER SERVICE (DOUBLE)
	BLOW OFF		SEWER SERVICE (SINGLE)
	FIRE HYDRANT		WATER SERVICE (DOUBLE)
	FIRE HYDRANT ASSEMBLY W/ GATE VALVE		WATER SERVICE (SINGLE)
	MITERED END SECTION		HEADWALL
	MANHOLE W/ NUMBER		DRAINAGE INLET (SEE PLAN FOR TYPES)
	PLUG VALVE		THROAT INLET
			FLARED END SECTION

HATCH PATTERNS

	WETLAND		EXISTING LAKE TO BE FILLED
	UPLAND BUFFER		PROPOSED LAKE
	UPLAND PRESERVE		LITTORAL SHELF AREA
	INDIGENOUS AREA		COMPENSATING LITTORAL PLANTING AREA
	NATURAL AREA		RIPRAP / GRAVEL
	FILTER MARSH		BRICK PAVERS
	EXISTING LAKE		

NOTE:
HATCH PATTERNS ARE FOR ILLUSTRATIVE PURPOSES ONLY. ACTUAL HATCH PATTERNS ON DRAWING MAY VARY IN SCALE & ANGLE

LINETYPES

	EXISTING	PROPOSED
RIGHT-OF-WAY LINE	---	---
CENTER LINE	---	---
LAKE MAINTENANCE EASEMENT	---	---
PUBLIC UTILITY EASEMENT	---	---
DRAINAGE EASEMENT	---	---
WETLAND BOUNDARY	---	---
FORCE MAIN	---	---
SANITARY SEWER	---	---
WATER MAIN	---	---
IRRIGATION MAIN	---	---
RE-USE MAIN	---	---
PERIMETER BERM	---	---
FENCE LINE	---	---
SILT FENCE	---	---
BULKHEAD	---	---
STRUCTURAL BUFFER	---	---

GENERAL NOTES:

- ELEVATIONS REFERENCE TO NAVD 1988. CONVERSION TO NGVD 1929 IS: NAVD 1988 + 1.18 = NGVD 1929.
- THE GENERAL NOTES MUST BE PART OF THIS ENTIRE DOCUMENT PACKAGE AND ARE PART OF THE CONTRACT DOCUMENTS. THE GENERAL NOTES ARE REFERENCED HEREIN AND MUST BE REFERRED TO BY THE CONTRACTOR. THE CONTRACTOR MUST BE FAMILIAR WITH AND ACKNOWLEDGE FAMILIARITY WITH ALL THE GENERAL NOTES AND ALL OF THE PLANS SPECIFICATION NOTES.
- CONTRACTOR MUST VERIFY ALL DIMENSIONS INCLUDED WITHIN THE PLAN SET AND SHOULD NOT SCALE OFF THE DRAWINGS DUE TO POTENTIAL PRINTING INACCURACIES. ALL DIMENSIONS ARE TO BE CHECKED AND CONFIRMED BY THE GENERAL CONTRACTOR PRIOR TO PREPARATION OF SHOP DRAWINGS, FABRICATION/ORDERING OF PARTS AND MATERIALS AND START OF SITE WORK.
- JOHNSON ENGINEERING, LLC. IS NOT RESPONSIBLE FOR AND HAVE NO CONTRACTUAL LEGAL OR OTHER RESPONSIBILITIES FOR JOB SITE SAFETY, JOB SITE SUPERVISION, OR ANYTHING RELATED TO THE SAME. JOHNSON ENGINEERING, INC. IS NOT RESPONSIBLE TO IDENTIFY OR REPORT ANY JOB SITE SAFETY ISSUES OR ANY JOB SITE CONDITIONS, AT ANY TIME.
- ALL CONSTRUCTION SHALL BE IN ACCORDANCE WITH STATE OF FLORIDA, DEPARTMENT OF TRANSPORTATION, STANDARD PLANS (LATEST EDITION), LEE COUNTY DEVELOPMENT STANDARDS AND SPECIFICATIONS AND LEE COUNTY UTILITIES REQUIREMENTS.
- CONTRACTOR SHALL RETAIN, ON THE WORK SITE, COPIES OF ANY PERMITS NECESSARY FOR CONSTRUCTION.
- CONTRACTOR SHALL BE RESPONSIBLE FOR OBTAINING ANY REQUIRED TREE REMOVAL PERMITS.
- THE SITE CONTRACTOR SHALL BECOME FAMILIAR WITH THE GEOTECHNICAL REPORT IF ONE WAS PREPARED. THE CONTRACTOR SHALL COMPLY WITH ALL THE SITE PREPARATION AND OTHER SITE RELATED ITEMS, RECOMMENDATIONS AND PROCEDURES.
- CONTRACTOR ACKNOWLEDGES THAT CONSTRUCTION SITE IS WITHIN A PUBLIC USE AREA AND SHALL MAINTAIN A SAFE AND SECURE WORK AREA.
- CONTRACTOR IS REQUIRED TO OBTAIN FROM THE ENGINEER AND OWNER WRITTEN APPROVAL FOR ANY DEVIATIONS FROM THE PLANS AND/OR SPECIFICATIONS.
- EXISTING OFF-SITE DRAINAGE PATTERNS SHALL BE MAINTAINED DURING CONSTRUCTION.
- ANY PUBLIC LAND CORNER WITHIN THE LIMITS OF CONSTRUCTION IS TO BE PROTECTED. IF A CORNER MONUMENT IS IN DANGER OF BEING DESTROYED AND HAS NOT BEEN PROPERLY REFERENCED, THE CONTRACTOR SHOULD NOTIFY THE OWNER/ENGINEER WITHOUT DELAY.
- THE LOCATION OF EXISTING UTILITIES, PAVEMENT, VEGETATION, AND MISCELLANEOUS IMPROVEMENTS ARE APPROXIMATE ONLY. THE EXACT LOCATIONS SHALL BE FIELD VERIFIED BY THE CONTRACTOR.
- CONTRACTOR SHALL NOTIFY THE LEE COUNTY DIVISION OF DEVELOPMENT REVIEW A MINIMUM OF 72 HOURS PRIOR TO ALL REQUIRED INSPECTIONS.
- CONTRACTOR TO PROVIDE SILT FENCE AND OTHER APPROPRIATE MEASURES TO AFFECT THE FILTRATION OF SURFACE WATER FLOWS AND TO PROVIDE EROSION PROTECTION DURING CONSTRUCTION ACTIVITIES. PROTECTION IS TO BE MAINTAINED DURING THE CONSTRUCTION PERIOD UNTIL DISTURBED SOILS HAVE BEEN STABILIZED WITH VEGETATION OR SUITABLE EROSION PROTECTION TREATMENT.
- DURING CONSTRUCTION, GRATE INLET AND JUNCTION BOX OPENINGS SHALL BE COVERED WITH FILTER FABRIC (MIRAFI 140N OR APPROVED EQUAL) TO PREVENT DEBRIS AND FILL FROM FALLING INTO THE INLET.
- CONTRACTOR SHALL USE DESIGNATED CONSTRUCTION ENTRANCES FOR EMPLOYEES AND DELIVERY OF MATERIALS.
- ALL CONSTRUCTION DEBRIS AND OTHER WASTE MATERIAL SHALL BE DISPOSED OF OFF-SITE IN ACCORDANCE WITH APPLICABLE REGULATION. IT IS THE CONTRACTOR'S RESPONSIBILITY TO ENSURE SITE IS CLEAN ONCE CONSTRUCTION IS FINISHED.
- CONTRACTOR SHALL PROMPTLY REPORT ALL FIELD CHANGES TO THE ENGINEER.
- THE CONTRACTOR SHALL ACCURATELY PLOT THE LOCATIONS AND DEPTHS OF ALL IMPROVEMENTS INSTALLED ON A FINAL SET OF RECORDED DRAWINGS WHICH SHALL BE DELIVERED TO THE ENGINEER.
- CONTRACTOR SHALL INCORPORATE BEST MANAGEMENT PRACTICES TO PREVENT CONSTRUCTION DEBRIS, DUST, AND OTHER MATERIALS FROM LEAVING THE IMMEDIATE WORK AREA AND ENTERING LOCAL WATERS. THIS INCLUDES TURBIDITY CONTROLS AND MONITORING FOR IN-WATER WORK AND OTHER LAND-DISTURBING ACTIVITIES. TURBIDITY CONTROLS AND MONITORING SHALL BE IN ACCORDANCE WITH PROJECT PERMITS.
- ALL PILES SHALL ACHIEVE EMBEDMENT AS SHOWN IN PLANS.
- CONSTRUCTION OF BOARDWALK DESIGN MAY REQUIRE MINOR GRADING BY CONTRACTOR TO ACHIEVE DESIRED GRADES. CONTRACTOR MUST RECEIVE WRITTEN APPROVAL FROM ENGINEER PRIOR TO GRADING COMMENCEMENT.
- UNLESS OTHERWISE NOTED, PILES SHALL BE INSTALLED IN THE SAME LOCATIONS AS PREVIOUS PILES TO MINIMIZE ENVIRONMENTAL IMPACT.
- REMOVAL OF VEGETATION SHALL ONLY BE ALLOWED WITHIN BOARDWALK LIMITS. REMOVAL OF VEGETATION OUTSIDE BOARDWALK LIMITS SHALL REQUIRE PRIOR APPROVAL FROM COUNTY OR ENGINEER.
- ALL CONSTRUCTION MATERIALS SHALL BE PER PLAN DETAILS.
- ALL PILES SHALL BE CUT OFF BELOW DECK. WATERPROOF PILE TOPS WITH DENSO 35 TAPE.
- BEVEL TOP EDGE OF STANCHIONS, RAILS, AND DECKING TO REMOVE SHARP EDGES AND SPLINTERS.
- CONTRACTOR SHALL ENSURE RAILING IS FREE OF BURRS AND SHARP EDGES.
- CONTRACTOR SHALL CONDUCT CLEANUP ON A DAILY BASIS.
- CONTRACTOR SHALL NOT SAW CUT PLASTIC MATERIALS WITHIN PRESERVE AREA. ALL COMPOSITE DECK BOARDS SHALL BE CUT TO LENGTH OFFSITE.

SITE DEMOLITION:

- ANY SITE DEMOLITION IS BASED ON AVAILABLE INFORMATION PROVIDED TO ENGINEER AND MAY NOT COVER ALL ASPECTS OF THE PROJECT. IT IS THE CONTRACTOR'S RESPONSIBILITY TO COVER ALL EXISTING INFRASTRUCTURE TO BE REMOVED IN THEIR DEMOLITION BUDGET.
- CONTRACTOR SHALL SUBMIT VERIFICATION OF COMPLIANCE THAT ALL DEMOLITION DEBRIS IS DISPOSED OF IN A MANNER CONSISTENT WITH FDEP REGULATIONS.

EXISTING UTILITY NOTE:

- CONTRACTOR TO CONTACT "SUNSHINE 811" FOR LOCATES TWO BUSINESS DAYS BEFORE YOU DIG, 1-800-432-4770. STATE, COUNTIES, AND CITIES ARE NOT PART OF THE ONE CALL SYSTEM, THEY MUST BE CALLED INDIVIDUALLY.

ACCESSIBILITY DESIGN GUIDELINES:

- ALL ACCESSIBLE (A.K.A. ADA) COMPONENTS AND ACCESSIBLE ROUTES MUST BE CONSTRUCTED TO MEET, AT A MINIMUM THE MOST STRINGENT OF: (A) THE REQUIREMENTS OF THE "AMERICANS WITH DISABILITIES ACT" (ADA) CODE (42 U.S.C. § 12101 ET SEQ. AND 42 U.S.C. § 4151 ET SEQ.); AND (B) ANY APPLICABLE LOCAL AND STATE GUIDELINES; AND ANY AND ALL AMENDMENTS TO BOTH, WHICH ARE IN EFFECT AT THE TIME OF CONSTRUCTION.

CONDITIONS FOR WORKING AROUND ANIMALS:

- CONTRACTOR SHALL COMPLY WITH THE STANDARD PROTECTION MEASURES FOR THE EASTERN INDIGO SNAKE, REVISED AUGUST 2013 DOCUMENT.

JOHNSON ENGINEERING
— An Apex Company —
JOHNSON ENGINEERING, LLC.
2122 JOHNSON STREET
FORT MYERS, FLORIDA 33901
PHONE: (239) 334-0046
E.F., #642 & L.B., #642

WEILER ENGINEERING CORPORATION
WEC
— An Apex Company —
WEILER ENGINEERING CORP.
201 WEST MARION AVENUE SUITE
1306 PUNTA GORDA, FLORIDA 33950
PHONE: (941) 505-1700
FAX: (941) 505-1702

JORDAN LEVI VARBLE, PE
FL License No. 81414



GALT NATURE
PRESERVE VARIOUS
BOARDWALK REPAIRS
LEE COUNTY, FLORIDA

NO.	REVISIONS DESCRIPTION	DATE

DATE: FEBRUARY 2025
PROJECT NO. 20236180-000
FILE NO. 35-45-22
SCALE: AS SHOWN

GENERAL NOTES & ABBREVIATIONS

SHEET NUMBER

C02

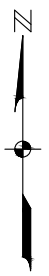
SHEET 8 & 12

LIMITS OF CONSTRUCTION (TYP.)

SHEET 6 & 10

SHEET 7 & 11

PARCEL: 35-45-22-00-00001.0000
OWNER: LEE COUNTY



0 15 30 60
INTENDED DISPLAY SCALE:
22"x34" PLAN 1"=30'
11"x17" PLAN 1"=60'

1. CONTRACTOR MAY UTILIZE A PORTION OF THE EXISTING PARKING LOT FOR EQUIPMENT STAGING, IF NEEDED.
2. PARK VISITOR TRAFFIC SHALL BE MAINTAINED AT ALL TIMES.
3. CONTRACTOR TO SUBMIT MOT PLAN, SIGNED AND SEALED BY A LICENSED ENGINEER, TO OWNER FOR APPROVAL.

JOHNSON ENGINEERING
— An Apex Company —
JOHNSON ENGINEERING, LLC.
2122 JOHNSON STREET
FORT MYERS, FLORIDA 33901
PHONE: (239) 334-0046
E.R. #642 & L.B. #642

WEILER ENGINEERING CORPORATION
— An Apex Company —
WEC
WEILER ENGINEERING CORP.
201 WEST MARION AVENUE SUITE
1306 PUNTA GORDA, FLORIDA 33950
PHONE: (841) 505-1700
FAX: (841) 505-1702

JORDAN LEVI VARBLE, PE
FL License No. 81414



**GALT NATURE
PRESERVE VARIOUS
BOARDWALK REPAIRS
LEE COUNTY, FLORIDA**

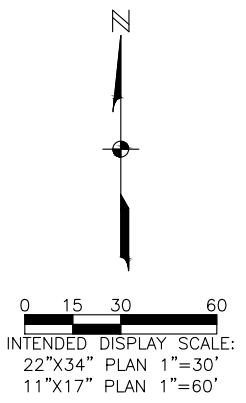
NO.	DESCRIPTION	DATE

DATE: FEBRUARY 2025
PROJECT NO. 20236180-000
FILE NO. 35-45-22
SCALE: AS SHOWN

AERIAL KEY MAP

SHEET NUMBER

C03



JOHNSON ENGINEERING
 — An Apex Company —
 JOHNSON ENGINEERING, LLC.
 2122 JOHNSON STREET
 FORT MYERS, FLORIDA 33901
 PHONE: (239) 334-0046
 E.R. #642 & L.B. #642

WEILER ENGINEERING CORPORATION
 — An Apex Company —
WEC
 WEILER ENGINEERING CORP.
 201 WEST MARION AVENUE SUITE
 1306 PUNTA GORDA, FLORIDA 33950
 PHONE: (941) 505-1700
 FAX: (941) 505-1702

JORDAN LEVI VARBLE, PE
 FL License No. 81414



GALT NATURE PRESERVE VARIOUS BOARDWALK REPAIRS LEE COUNTY, FLORIDA

NO.	DESCRIPTION	DATE

DATE: FEBRUARY 2025
 PROJECT NO. 20236180-000
 FILE NO. 35-45-22
 SCALE: AS SHOWN

FLUCFCS Code	Description	Status	Area in Acres
426	Tropical Hardwoods	N	0.10
530	Over-Water Structures	SW	0.04
610	Boardwalk in Wetland Hardwood Forests	W	0.19
Total Site			0.33
Legend			
N = Non Wetlands			Total N 0.10
W = Wetlands			Total W 0.19
SW = Surface Waters			Total SW 0.04
Total Site			0.33

FLUCFCS MAP

SHEET NUMBER

C04



INTENDED DISPLAY SCALE:
 22"X34" PLAN 1"=30'
 11"X17" PLAN 1"=60'

JOHNSON ENGINEERING
 — An Apex Company —
 JOHNSON ENGINEERING, LLC.
 2122 JOHNSON STREET
 FORT MYERS, FLORIDA 33901
 PHONE: (239) 334-0046
 E.R. #642 & L.B. #642

WEILER ENGINEERING CORPORATION
 — An Apex Company —
WEC
 WEILER ENGINEERING CORP.
 201 WEST MARION AVENUE SUITE
 1306 PUNTA GORDA, FLORIDA 33950
 PHONE: (941) 505-1700
 FAX: (941) 505-1702

JORDAN LEVI VARBLE, PE
 FL License No. 81414



**GALT NATURE
 PRESERVE VARIOUS
 BOARDWALK REPAIRS
 LEE COUNTY, FLORIDA**

NO.	DESCRIPTION	DATE

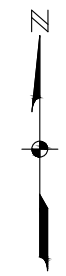
DATE: FEBRUARY 2025
 PROJECT NO. 20236180-000
 FILE NO. 35-45-22
 SCALE: AS SHOWN

SOILS MAP

SHEET NUMBER

C05

NRCS SOILS		
Soil ID	Description	Hydric Status
10	Pompano Fine Sand, 0 to 2 percent slopes	Hydric
69	Mattacha Gravelly Fine Sand, 0 to 2 percent slopes	Non-Hydric
99	Water	



0 5 10 20
 INTENDED DISPLAY SCALE:
 22"X34" PLAN 1"=10'
 11"X17" PLAN 1"=20'

1. ELEVATIONS REFERENCE TO NAVD 1988. CONVERSION TO NGVD 1929 IS: NAVD 1988 + 1.18 = NGVD 1929.

LEGEND

AREA TO REMAIN (MINOR REPAIRS)

AREA TO BE REPLACED

JOHNSON ENGINEERING
 — An Apex Company —
 JOHNSON ENGINEERING, LLC.
 2122 JOHNSON STREET
 FORT MYERS, FLORIDA 33901
 PHONE: (239) 334-0046
 E.R. #642 & L.B. #642

WEILER ENGINEERING CORPORATION
 — An Apex Company —
WEC
 WEILER ENGINEERING CORP.
 201 WEST MARION AVENUE SUITE
 1306 PUNTA GORDA, FLORIDA 33950
 PHONE: (941) 505-1700
 FAX: (941) 505-1702

JORDAN LEVI VARBLE, PE
 FL License No. 81414



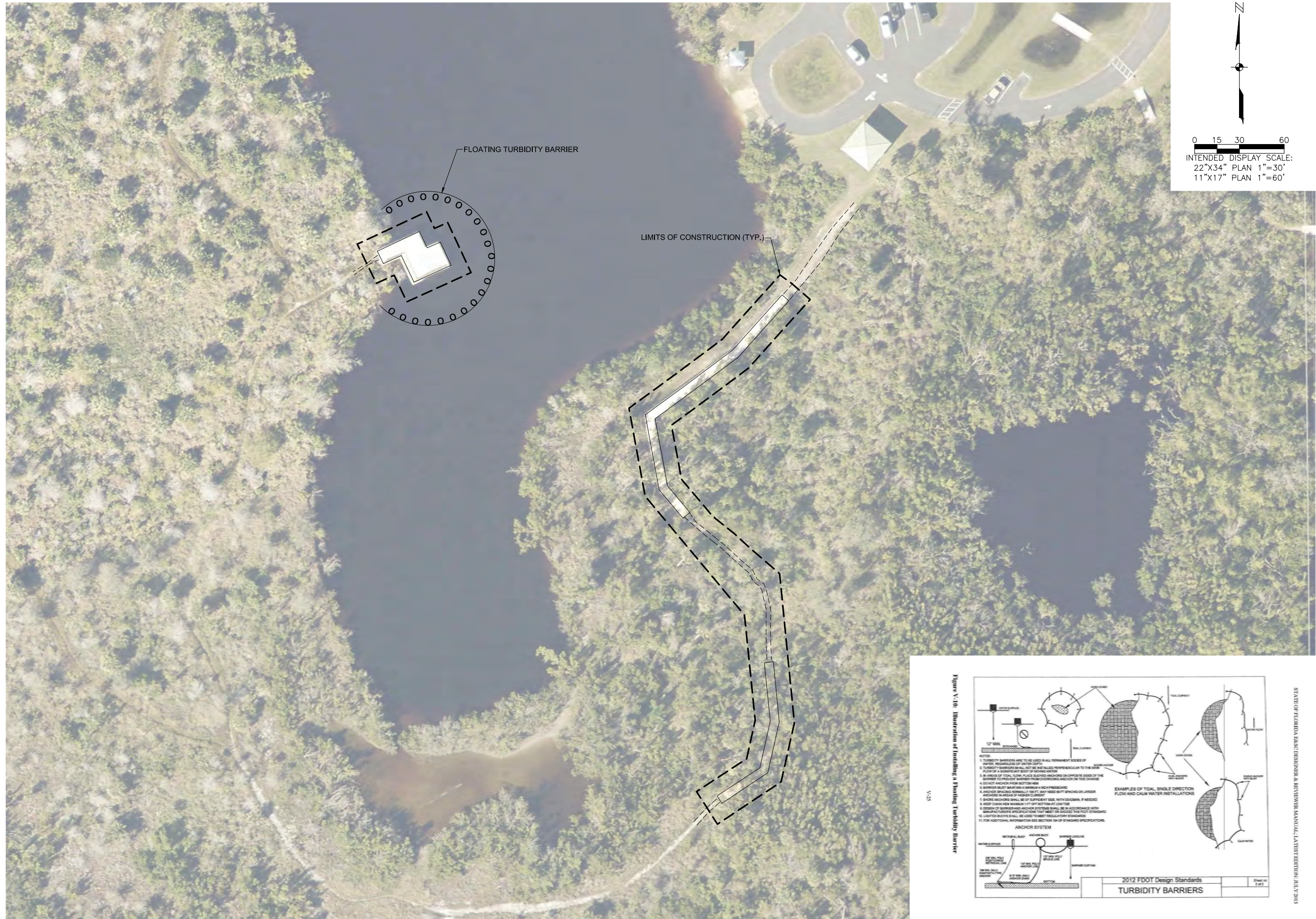
GALT NATURE PRESERVE VARIOUS BOARDWALK REPAIRS LEE COUNTY, FLORIDA

NO.	REVISIONS DESCRIPTION	DATE

DATE: FEBRUARY 2025
 PROJECT NO. 20236180-000
 FILE NO. 35-45-22
 SCALE: AS SHOWN

EXISTING CONDITIONS AND DEMOLITION PLAN

SHEET NUMBER
C08



NORTH
 0 15 30 60
 INTENDED DISPLAY SCALE:
 22"X34" PLAN 1"=30'
 11"X17" PLAN 1"=60'

JOHNSON ENGINEERING
 — An Apex Company —
 JOHNSON ENGINEERING, LLC.
 2122 JOHNSON STREET
 FORT MYERS, FLORIDA 33901
 PHONE: (239) 334-0046
 E.R. #642 & L.B. #642

WEILER ENGINEERING CORPORATION
 — An Apex Company —
WEC
 WEILER ENGINEERING CORP.
 201 WEST MARION AVENUE SUITE
 1306 PUNTA GORDA, FLORIDA 33950
 PHONE: (813) 505-1700
 FAX: (813) 505-1702

JORDAN LEVI VARBLE, PE
 FL License No. 81414



**GALT NATURE
 PRESERVE VARIOUS
 BOARDWALK REPAIRS
 LEE COUNTY, FLORIDA**

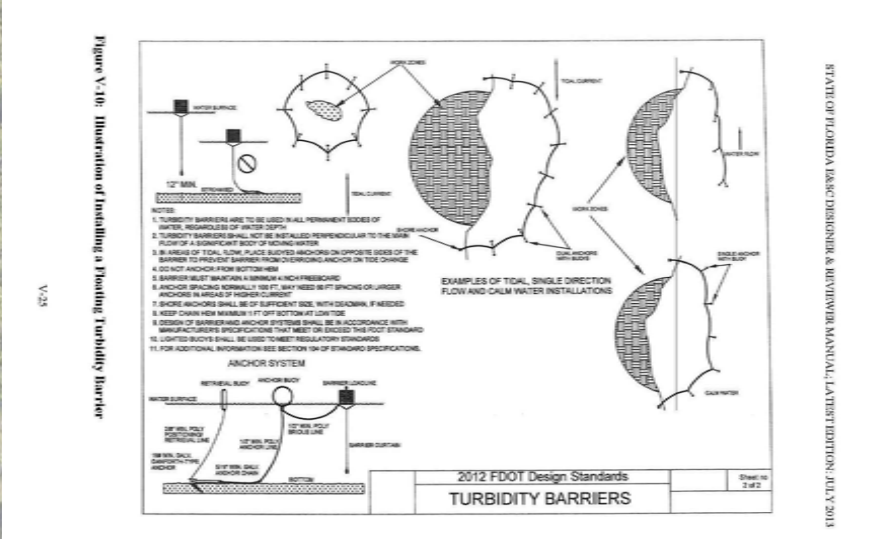
NO.	REVISIONS DESCRIPTION	DATE

DATE: FEBRUARY 2025
 PROJECT NO. 20236180-000
 FILE NO. 35-45-22
 SCALE: AS SHOWN

EROSION CONTROL PLAN

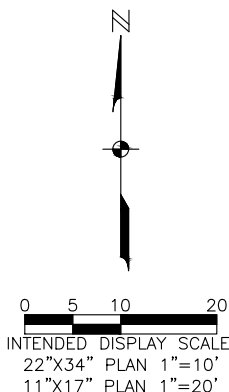
SHEET NUMBER

C09

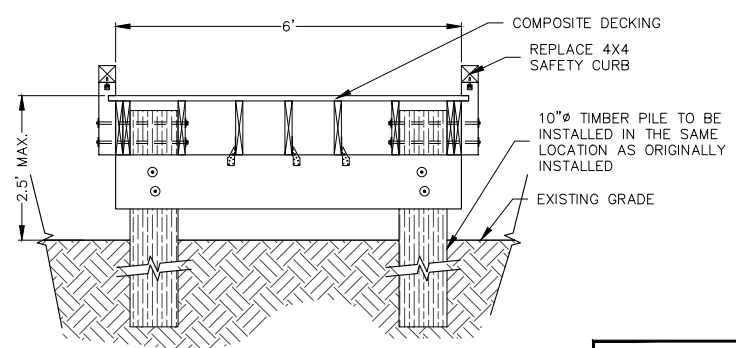




1. ELEVATIONS REFERENCE TO NAVD 1988. CONVERSION TO NGVD 1929 IS: NAVD 1988 + 1.18 = NGVD 1929.



FOR STRUCTURAL DETAILS, SEE PLANS BY WEILER ENGINEERING CORP.



BOARDWALK SECTION VIEW
N.T.S.

LEGEND	
±2.61	EXISTING GRADE
←4.00	PROPOSED GRADE

JOHNSON ENGINEERING
— An Apex Company —
JOHNSON ENGINEERING, LLC.
2122 JOHNSON STREET
FORT MYERS, FLORIDA 33901
PHONE: (239) 334-0046
E.R. #642 & L.B. #642

WEILER ENGINEERING CORPORATION
— An Apex Company —
WEC
WEILER ENGINEERING CORP.
201 WEST MARION AVENUE SUITE
1306 PUNTA GORDA, FLORIDA 33950
PHONE: (941) 505-1700
FAX: (941) 505-1702

JORDAN LEVI VARBLE, PE
FL License No. 81414



GALT NATURE PRESERVE VARIOUS BOARDWALK REPAIRS LEE COUNTY, FLORIDA

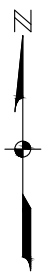
NO.	REVISIONS DESCRIPTION	DATE

DATE: FEBRUARY 2025
PROJECT NO. 20236180-000
FILE NO. 35-45-22
SCALE: AS SHOWN

SITE PLAN & PAVING, GRADING, AND DRAINAGE PLAN

SHEET NUMBER
C10

MATCHLINE (SEE SHEET C10)



0 5 10 20
 INTENDED DISPLAY SCALE:
 22"x34" PLAN 1"=10'
 11"x17" PLAN 1"=20'

1. ELEVATIONS REFERENCE TO NAVD
 1988. CONVERSION TO NGVD 1929
 IS: NAVD 1988 + 1.18 = NGVD 1929.



PROPOSED LOCATIONS FOR
 (4) COMPOSITE DECK EDGE PROTECTION
 BOARDS, WITH SPACERS

LIMITS OF CONSTRUCTION (TYP.)

WOOD PILING (TYP.)

EXISTING BOARDWALK 2
 109 LF; 6' WIDTH

LEGEND	
	EXISTING GRADE
	PROPOSED GRADE



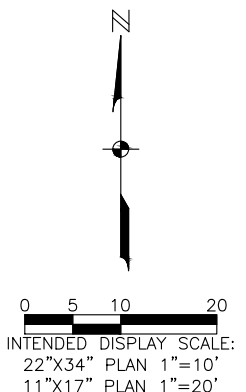
**GALT NATURE
 PRESERVE VARIOUS
 BOARDWALK REPAIRS
 LEE COUNTY, FLORIDA**

NO.	REVISIONS DESCRIPTION	DATE

DATE: FEBRUARY 2025
 PROJECT NO. 20236180-000
 FILE NO. 35-45-22
 SCALE: AS SHOWN

**SITE PLAN &
 PAVING, GRADING,
 AND DRAINAGE
 PLAN**

SHEET NUMBER
C11



1. ELEVATIONS REFERENCE TO NAVD 1988. CONVERSION TO NGVD 1929 IS: NAVD 1988 + 1.18 = NGVD 1929.

JOHNSON ENGINEERING
 — An Apex Company —
 JOHNSON ENGINEERING, LLC.
 2122 JOHNSON STREET
 FORT MYERS, FLORIDA 33901
 PHONE: (239) 334-0046
 E.R. #642 & L.B. #642

WEILER ENGINEERING CORPORATION
 — An Apex Company —
WEC
 WEILER ENGINEERING CORP.
 201 WEST MARION AVENUE SUITE
 1306 PUNTA GORDA, FLORIDA 33950
 PHONE: (941) 505-1700
 FAX: (941) 505-1702

JORDAN LEVI VARBLE, PE
 FL License No. 81414



GALT NATURE PRESERVE VARIOUS BOARDWALK REPAIRS LEE COUNTY, FLORIDA

NO.	REVISIONS DESCRIPTION	DATE

DATE: FEBRUARY 2025
 PROJECT NO. 20236180-000
 FILE NO. 35-45-22
 SCALE: AS SHOWN

SITE PLAN & PAVING, GRADING, AND DRAINAGE PLAN

SHEET NUMBER
C12