

LEE COUNTY BOARD OF COUNTY COMMISSIONERS

Public Works Administration  
Department of Transportation  
Map Locations of Proposed

COUNTYWIDE ARTERIALS RESURFACING  
ROADWAY IMPROVEMENT  
PINE ISLAND ROAD - TIPTON DR TO WEST OF MATLACHA  
STRINGFELLOW ROAD - BOMAR LANE TO NO NAME ROAD



Location Map  
LEE COUNTY, FLORIDA

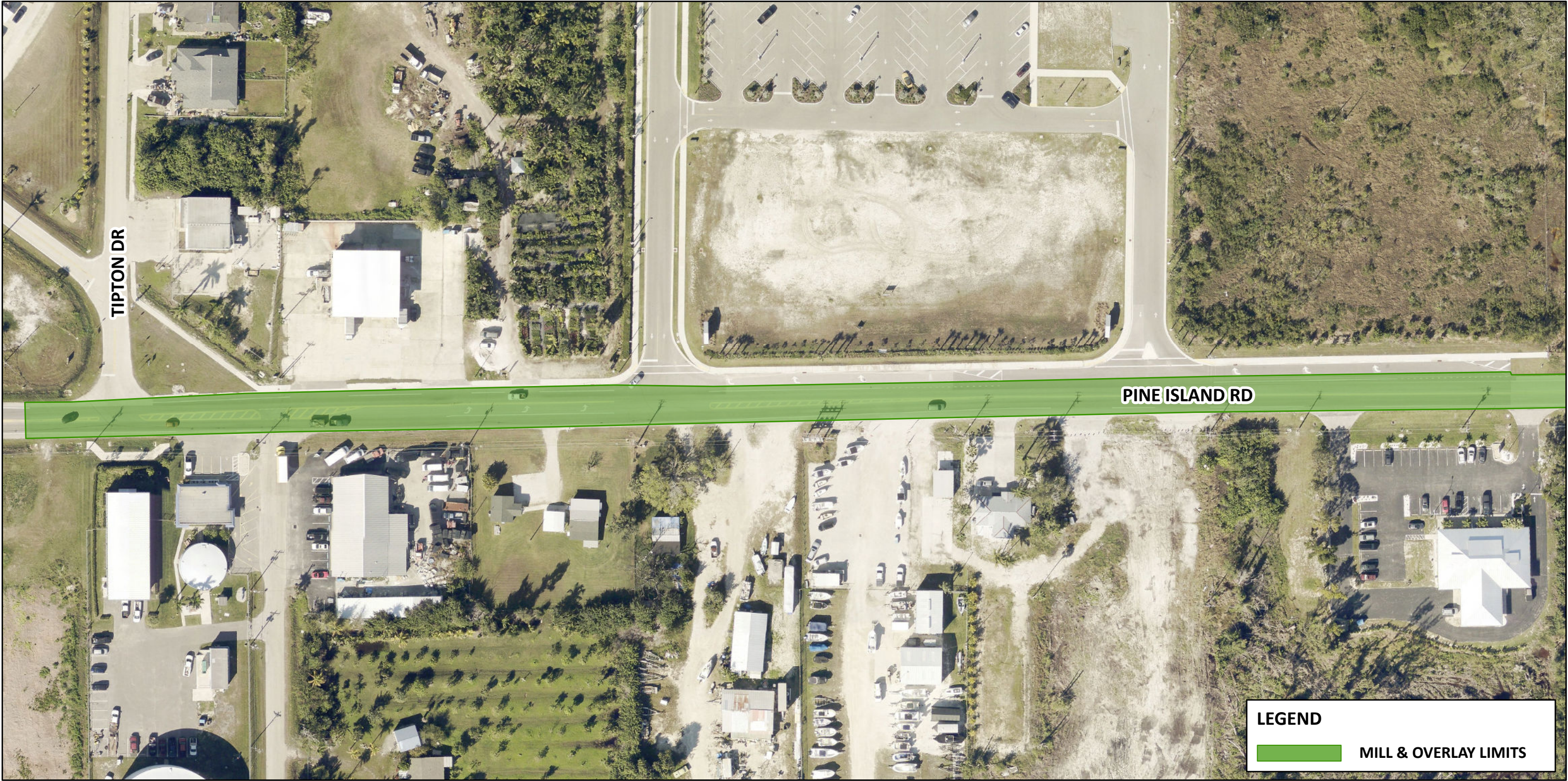
May 9, 2024

INDEX

1.....	Coversheet
2.....	Typical & Notes
3-5.....	Pine Island Road
6-9.....	Stringfellow Road



RESURFACING  
AERIAL LAYOUT  
LOCATION MAP



Resurfacing Project  
Location Map  
Countywide Arterial Roads



COUNTYWIDE  
ARTERIAL  
RESURFACING  
3FY2025H

Public Works  
Southwest  
Florida  
(239) 533-8900

Dept of Transportation  
1500 Monroe St  
Ft Myers, Florida, 33901

Drawn By: DRW

Checked By: FJL

Date: 5/9/2024

COUNTYWIDE

Sheet 3 of 10



RESURFACING  
AERIAL LAYOUT  
LOCATION MAP



Resurfacing Project Location Map Countywide Arterial Roads		COUNTYWIDE ARTERIAL RESURFACING 3FY2025H	Dept of Transportation 1500 Monroe St Ft Myers, Florida, 33901	COUNTYWIDE
		Public Works Southwest Florida (239)533-8900	Drawn By: DRW	Sheet 4 of 10
			Checked By: FJL	
			Date: 5/9/2024	



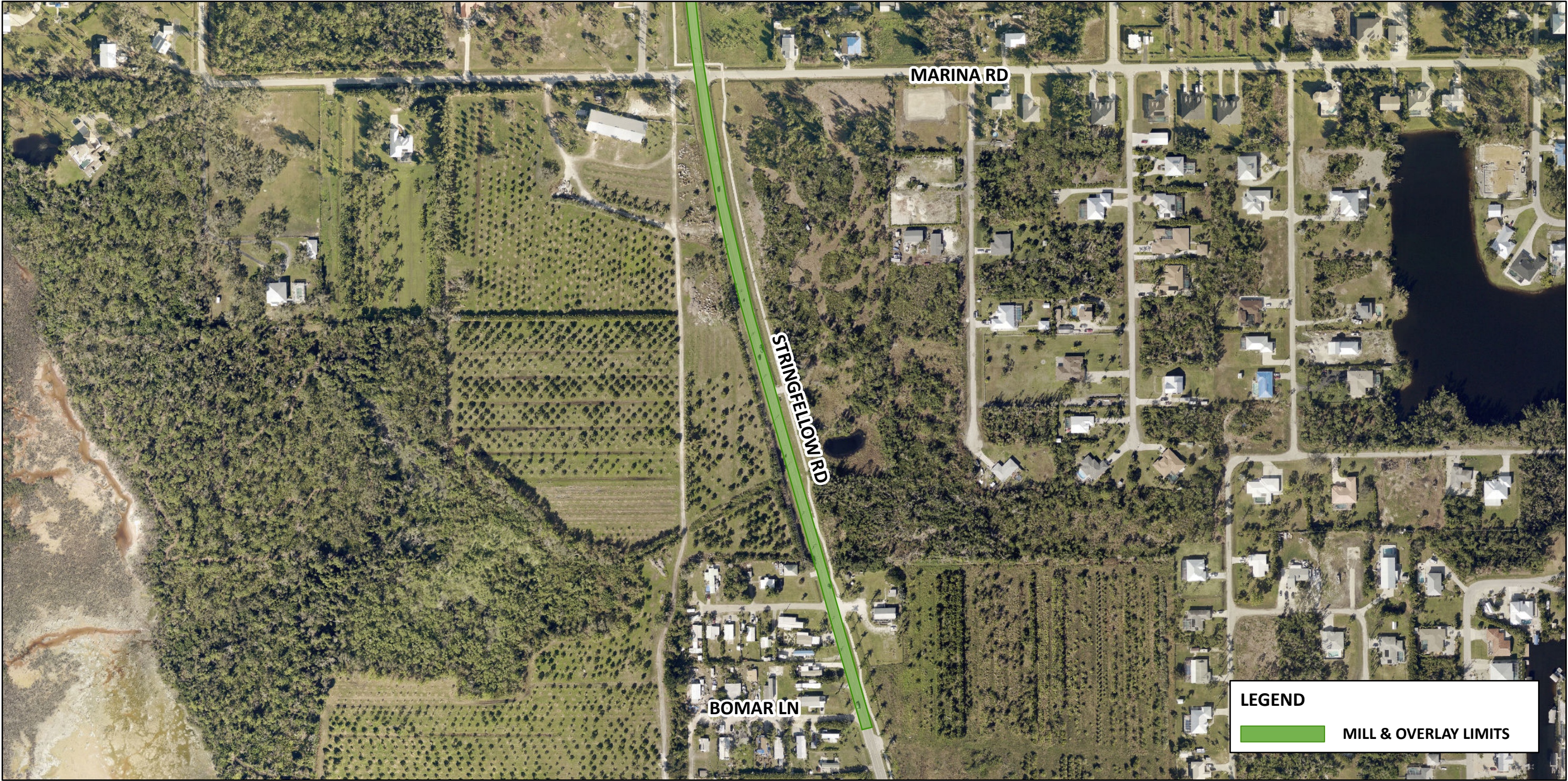
RESURFACING  
AERIAL LAYOUT  
LOCATION MAP



Resurfacing Project Location Map Countywide Arterial Roads		COUNTYWIDE ARTERIAL RESURFACING 3FY2025H	Dept of Transportation 1500 Monroe St Ft Myers, Florida, 33901	COUNTYWIDE
		Public Works Southwest Florida (239)533-8900	Drawn By: DRW	Sheet 5 of 10
			Checked By: FJL	
			Date: 5/9/2024	



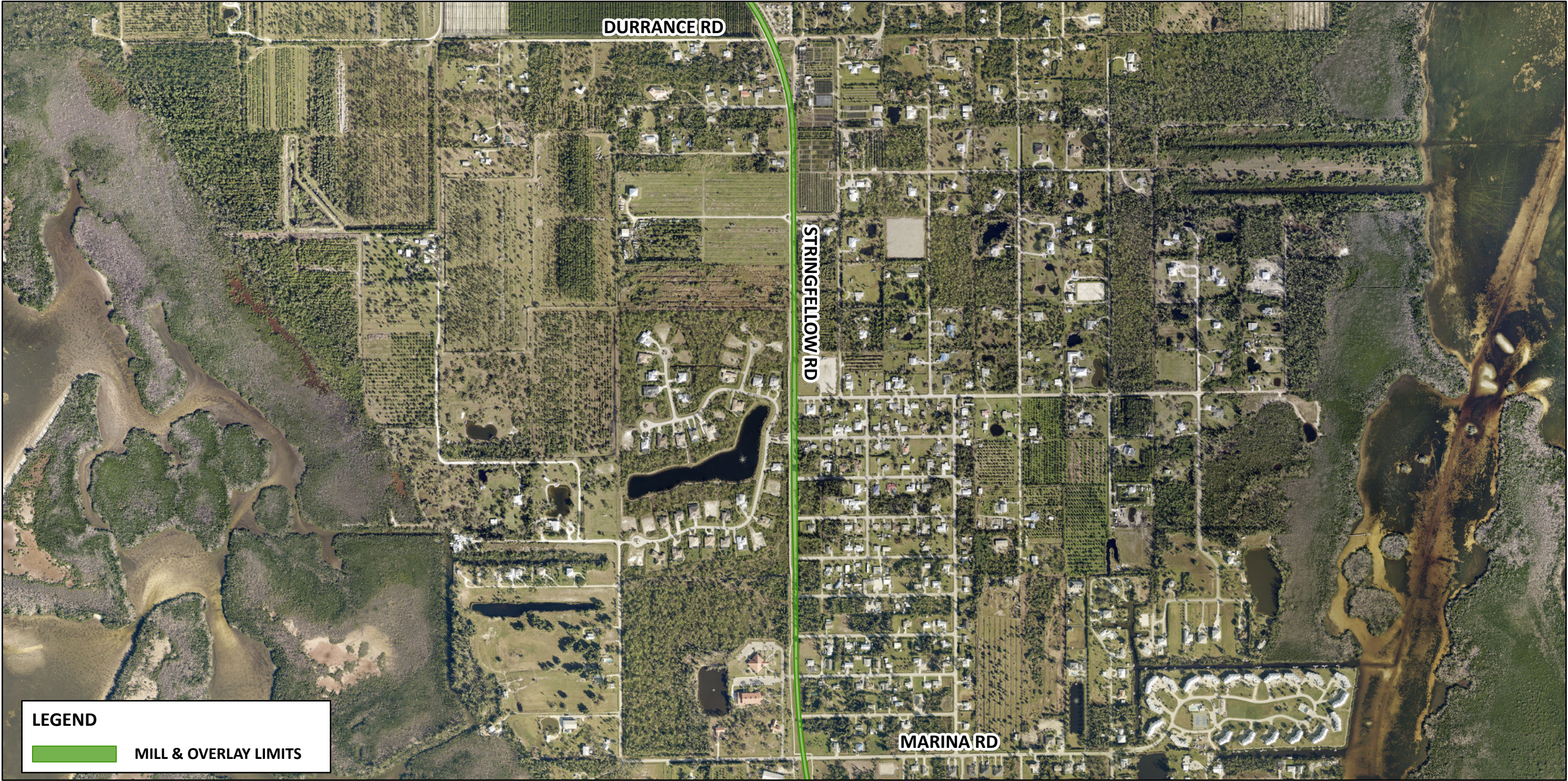
RESURFACING  
AERIAL LAYOUT  
LOCATION MAP



Resurfacing Project Location Map Countywide Arterial Roads		COUNTYWIDE ARTERIAL RESURFACING 3FY2025H	Dept of Transportation 1500 Monroe St Ft Myers, Florida, 33901	COUNTYWIDE
		Public Works Southwest Florida (239) 533-8900	Drawn By: DRW	Sheet 6 of 9
			Checked By: FJL	
			Date: 5/9/2024	



RESURFACING  
AERIAL LAYOUT  
LOCATION MAP



Resurfacing Project  
Location Map  
Countywide Arterial Roads



COUNTYWIDE  
ARTERIAL  
RESURFACING  
3FY2025H

Public Works  
Southwest  
Florida  
(239) 533-8900

Dept of Transportation  
1500 Monroe St  
Ft Myers, Florida, 33901

Drawn By: DRW

Checked By: FJL

Date: 5/9/2024

COUNTYWIDE

Sheet 7 of 9



RESURFACING  
AERIAL LAYOUT  
LOCATION MAP



LEGEND

 MILL & OVERLAY LIMITS

Resurfacing Project  
Location Map  
Countywide Arterial Roads



COUNTYWIDE  
ARTERIAL  
RESURFACING  
3FY2025H

Public Works  
Southwest  
Florida  
(239)533-8900

Dept of Transportation  
1500 Monroe St  
Ft Myers, Florida, 33901

Drawn By: DRW

Checked By: FJL

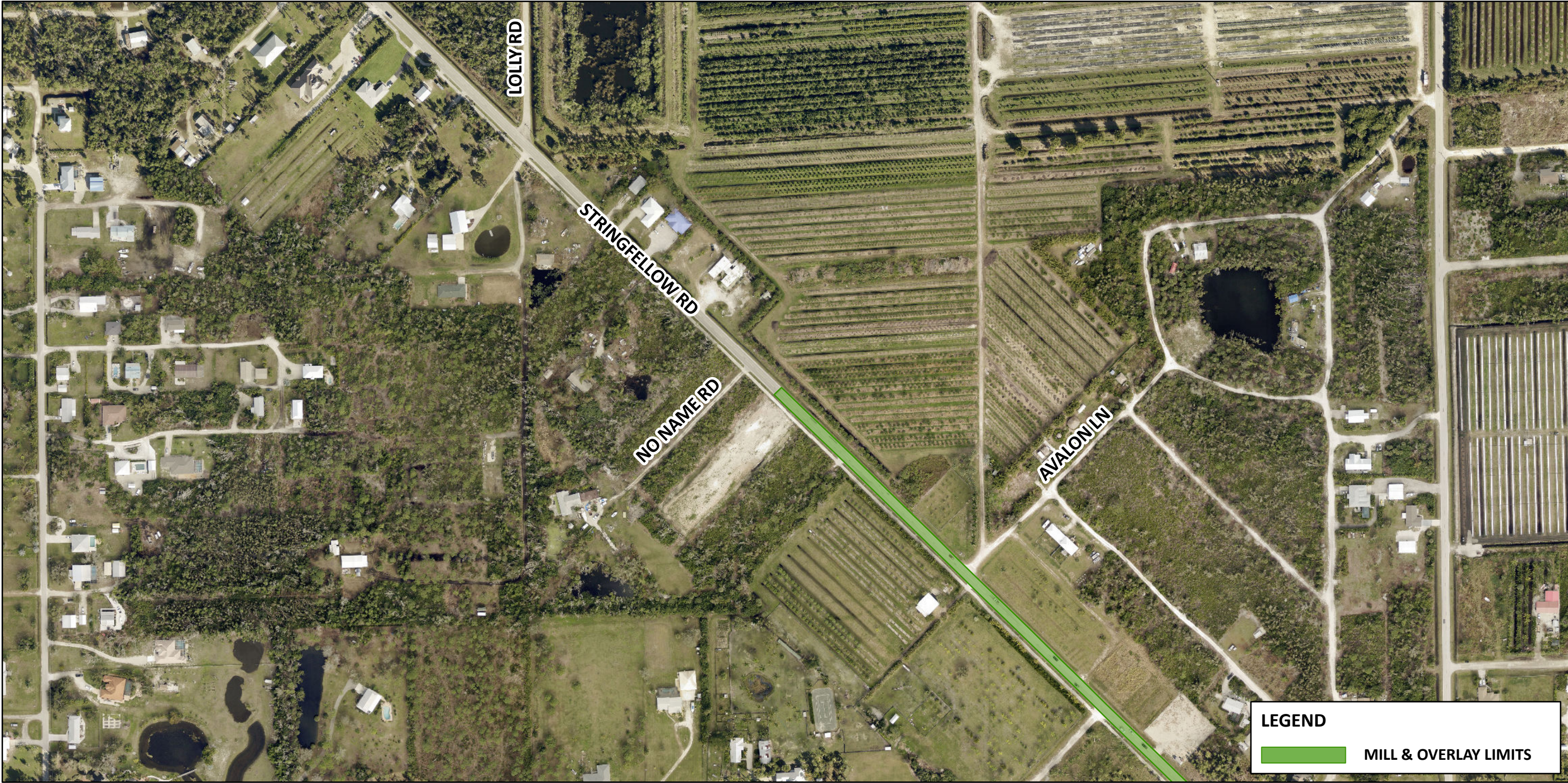
Date: 5/9/2024

COUNTYWIDE

Sheet 8 of 9



RESURFACING  
AERIAL LAYOUT  
LOCATION MAP



**LEGEND**

MILL & OVERLAY LIMITS

Resurfacing Project Location Map Countywide Arterial Roads		COUNTYWIDE ARTERIAL RESURFACING 3FY2025H	Dept of Transportation 1500 Monroe St Ft Myers, Florida, 33901	COUNTYWIDE
		Public Works Southwest Florida (239)533-8900	Drawn By: DRW	Sheet 9 of 9
			Checked By: FJL	
			Date: 5/9/2024	