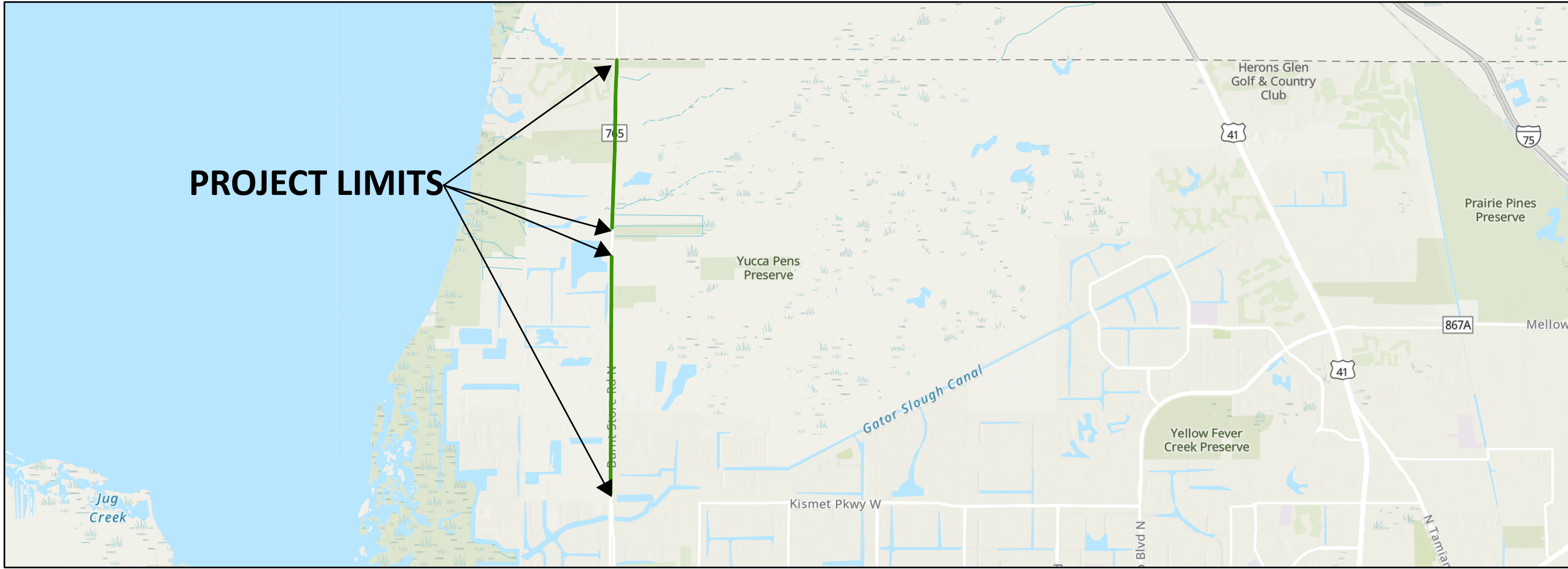


# LEE COUNTY BOARD OF COUNTY COMMISSIONERS

Public Works Administration  
Department of Transportation  
Map Locations of Proposed

## COUNTYWIDE ARTERIALS RESURFACING ROADWAY IMPROVEMENT BURNT STORE ROAD - DELILAH DR TO CHARLOTTE COUNTY LINE

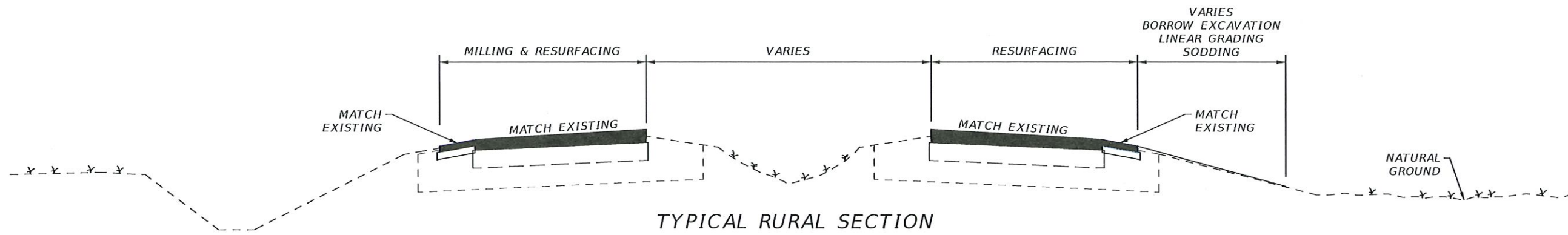


Location Map  
LEE COUNTY, FLORIDA

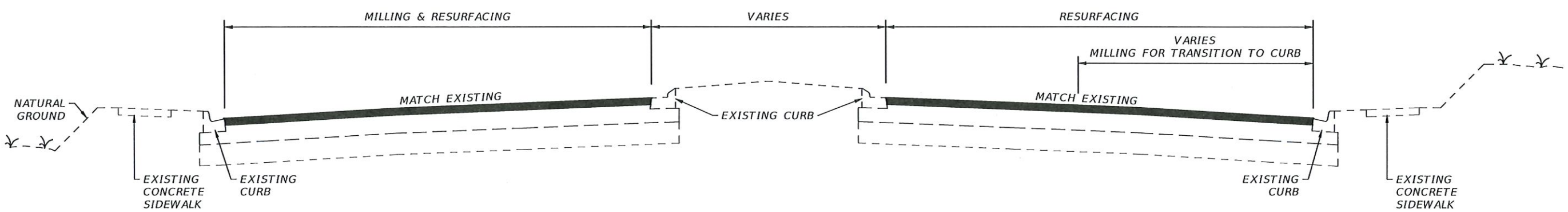
March 5, 2024

INDEX

1.....	Coversheet
2.....	Typical & Notes
3-5.....	Burnt Store Road



TYPICAL RURAL SECTION



TYPICAL URBAN SECTION

**MILLING & RESURFACING NOTES**

1. Scheduling of all work is subject to the prior approval of the Engineer, The Contractor's attention is directed to the highly seasonal nature of traffic volumes and the Engineer's application of discretion to minimize disruption during high volume times.
2. Where connecting to an existing driveway is necessary, a smooth transition to edge of pavement shall be established to the satisfaction of the Engineer. No feathered joints.
3. The Contractor shall protect private property. Any damage caused by the Contractor in the performance of this work shall be corrected to the satisfaction of the Engineer and property owner at the Contractor's expense. No direct payment will be made.
4. Any damage to state, county, or local roads caused by the Contractor's hauling activities shall be repaired by The Contractor to the satisfaction of the Engineer at the Contractor's expense, no direct payment will be made.
5. Texas swale locations and elevations will be established and laid out by the County. The Contractor is responsible for all other stakeout of the project and establishment of any necessary lines, grades, slope stakes, utility locations or any other stakeout necessary to complete the work. The cost of staking shall be subsidiary to other items of work, no direct payment will be made.
6. The State of Florida does not require a project specific National Pollutant Discharge Elimination System (NPDES) permit for construction activities that disturb less than one acre of land. However, the Contractor is responsible for installation, maintenance, and removal of any necessary best management practices devices necessary to prevent sediment from leaving the project site. The cost of this work is subsidiary to other items, no direct payment will be made.
7. Exact limits of milling and resurfacing work within each specific segment will be established by the Engineer prior to commencement of work. No payment will be made for work outside the authorized limits of resurfacing.
8. Milling and/or resurfacing shall be performed such that the original cross-slopes of the roadway are maintained to the extent practical. Any deviations shall be subject to prior authorization of the Engineer.
9. Shoulders shall be restored to the satisfaction of the Engineer prior to Final Acceptance of the work.
10. Clean-up of the project shall be accomplished by the Contractor to the Satisfaction of the Engineer. Cleanup shall be subsidiary to other items of work, no direct payment will be made.
11. MOT to be in compliance with FDOT 102-600 series.

REVISIONS			
DATE	DESCRIPTION	DATE	DESCRIPTION



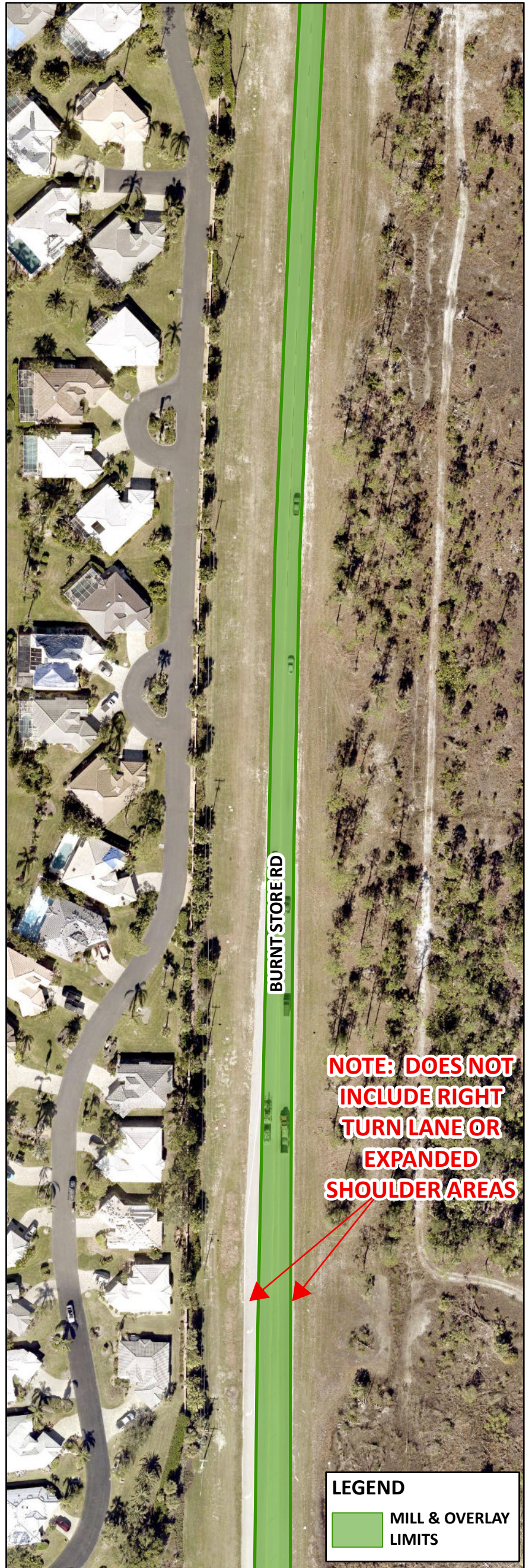
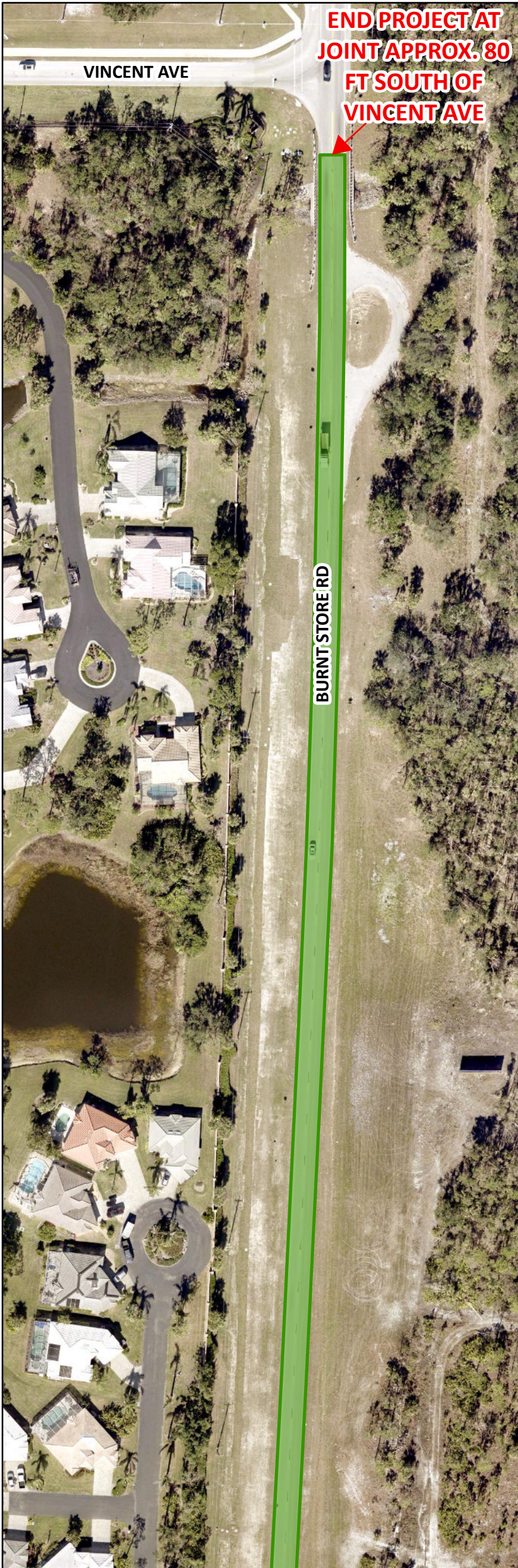
LEE COUNTY DEPARTMENT OF TRANSPORTATION		
ROAD NAME	COUNTY	PROJECT ID
	LEE	

TYPICAL SECTION

SHEET NO.
2

THE OFFICIAL RECORD OF THIS SHEET IS THE ELECTRONIC FILE DIGITALLY SIGNED AND SEALED UNDER RULE 61G15-23.004, F.A.C.

RESURFACING  
AERIAL LAYOUT  
LOCATION MAP



Resurfacing Project  
Location Map  
Countywide Arterial Roads



COUNTYWIDE  
ARTERIAL  
RESURFACING  
3FY2025D

Public Works  
Southwest  
Florida  
(239)533-8900

Dept of Transportation  
1500 Monroe St  
Ft Myers, Florida, 33901

Drawn By: DRW

Checked By: FJL

Date: 3/5/2024

COUNTYWIDE

Sheet 3 of 11

# RESURFACING AERIAL LAYOUT LOCATION MAP



**LEGEND**

MILL & OVERLAY LIMITS

**Resurfacing Project  
Location Map  
Countywide Arterial Roads**



COUNTYWIDE  
ARTERIAL  
RESURFACING  
3FY2025D

Public Works  
Southwest  
Florida  
(239)533-8900

Dept of Transportation  
1500 Monroe St  
Ft Myers, Florida, 33901

Drawn By: DRW

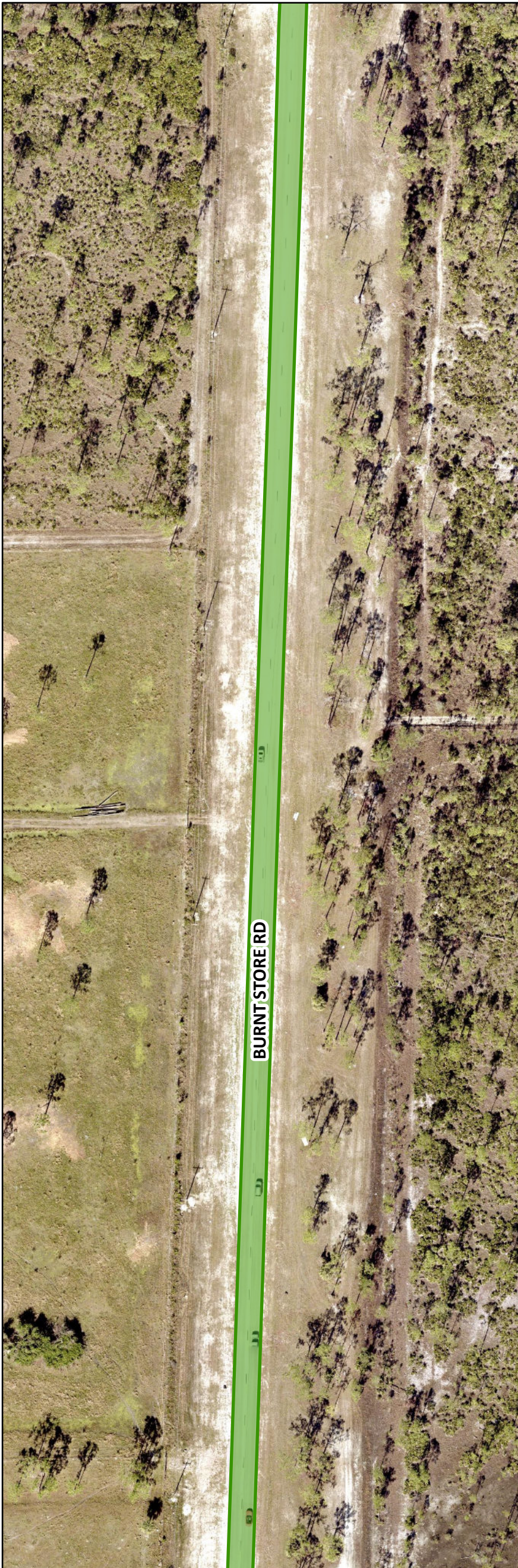
Checked By: FJL

Date: 3/5/2024

COUNTYWIDE

Sheet 4 of 11

# RESURFACING AERIAL LAYOUT LOCATION MAP



**LEGEND**

MILL & OVERLAY LIMITS

**Resurfacing Project  
Location Map  
Countywide Arterial Roads**



COUNTYWIDE  
ARTERIAL  
RESURFACING  
3FY2025D

Public Works  
Southwest  
Florida  
(239)533-8900

Dept of Transportation  
1500 Monroe St  
Ft Myers, Florida, 33901

Drawn By: DRW

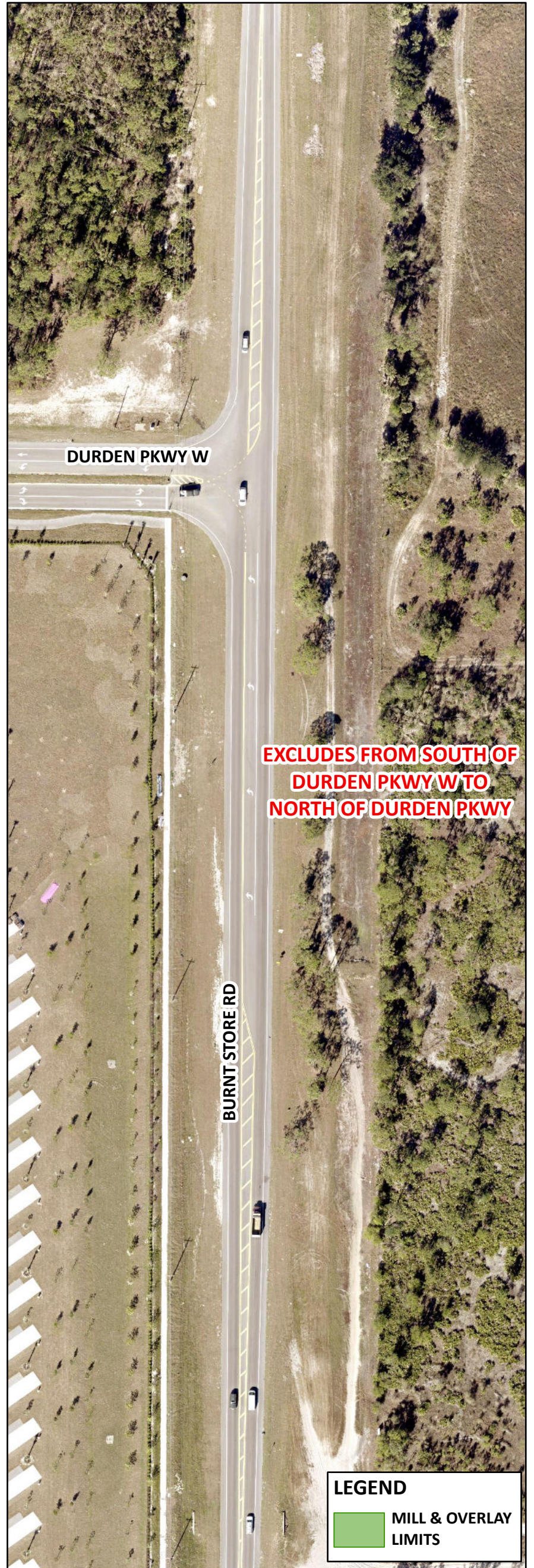
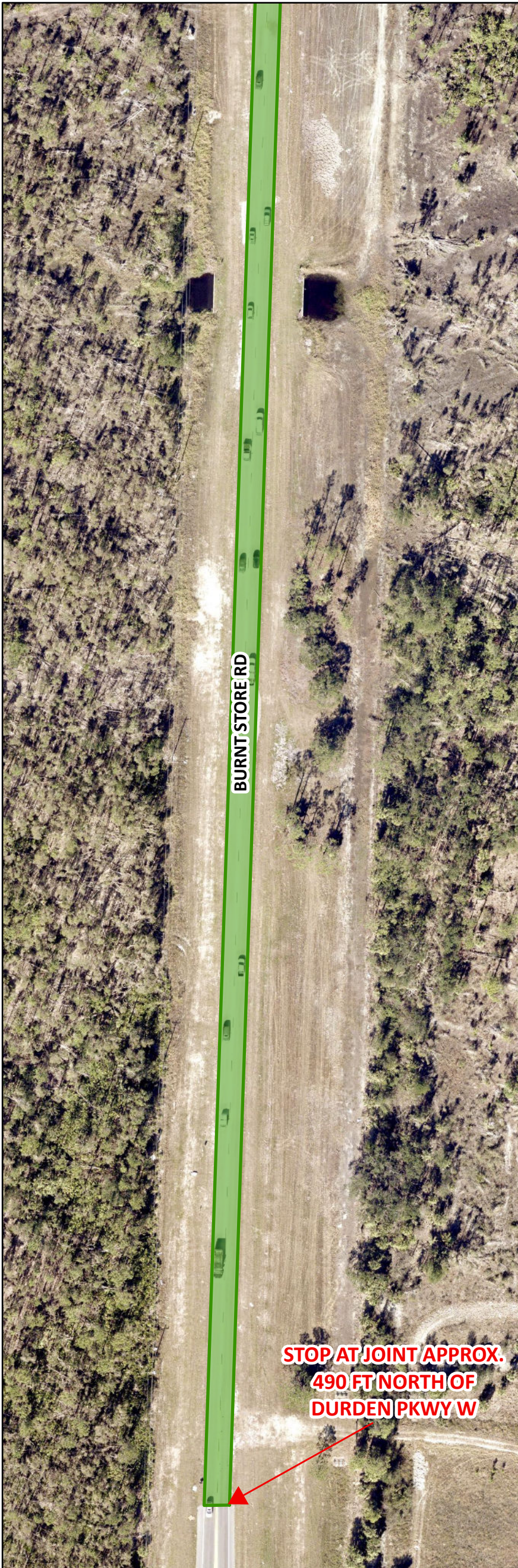
Checked By: FJL

Date: 3/5/2024

**COUNTYWIDE**

**Sheet 5 of 11**

# RESURFACING AERIAL LAYOUT LOCATION MAP



**Resurfacing Project  
Location Map  
Countywide Arterial Roads**



COUNTYWIDE  
ARTERIAL  
RESURFACING  
3FY2025D

Public Works  
Southwest  
Florida  
(239)533-8900

Dept of Transportation  
1500 Monroe St  
Ft Myers, Florida, 33901

Drawn By: DRW

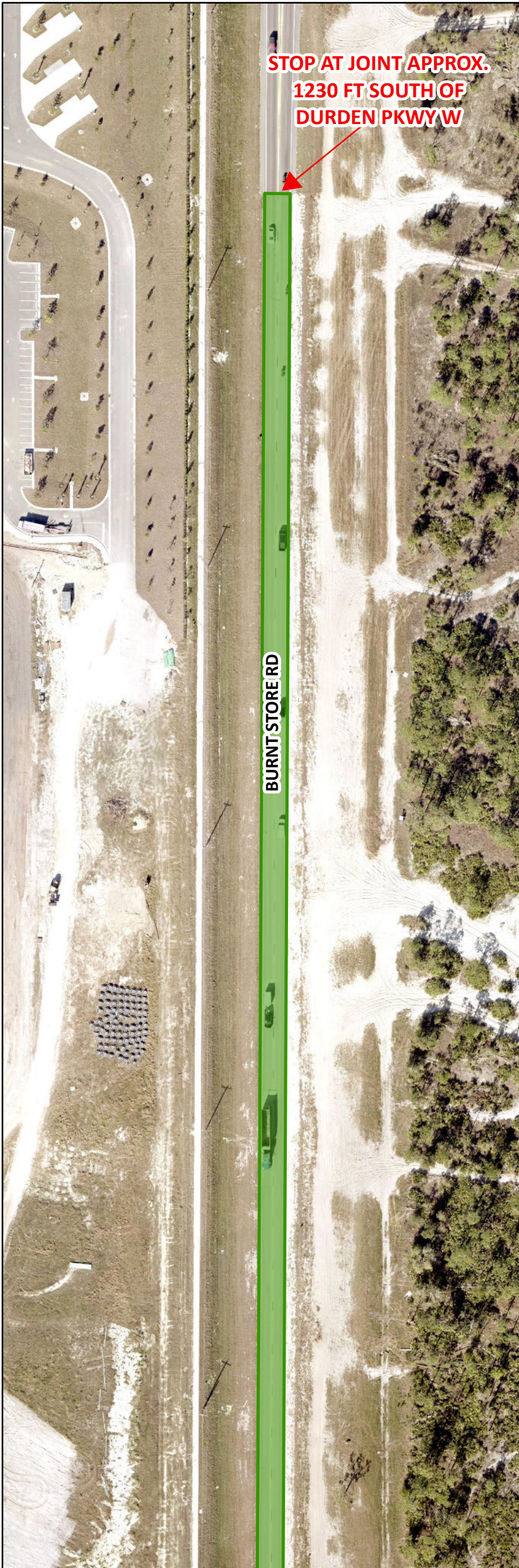
Checked By: FJL

Date: 3/5/2024

**COUNTYWIDE**

**Sheet 6 of 11**

# RESURFACING AERIAL LAYOUT LOCATION MAP



**Resurfacing Project  
Location Map  
Countywide Arterial Roads**



COUNTYWIDE  
ARTERIAL  
RESURFACING  
3FY2025D

Public Works  
Southwest  
Florida  
(239)533-8900

Dept of Transportation  
1500 Monroe St  
Ft Myers, Florida, 33901

Drawn By: DRW

Checked By: FJL

Date: 3/5/2024

**COUNTYWIDE**

**Sheet 7 of 11**

# RESURFACING AERIAL LAYOUT LOCATION MAP



**LEGEND**

MILL & OVERLAY LIMITS

**Resurfacing Project  
Location Map  
Countywide Arterial Roads**



COUNTYWIDE  
ARTERIAL  
RESURFACING  
3FY2025D

Public Works  
Southwest  
Florida  
(239)533-8900

Dept of Transportation  
1500 Monroe St  
Ft Myers, Florida, 33901

Drawn By: DRW

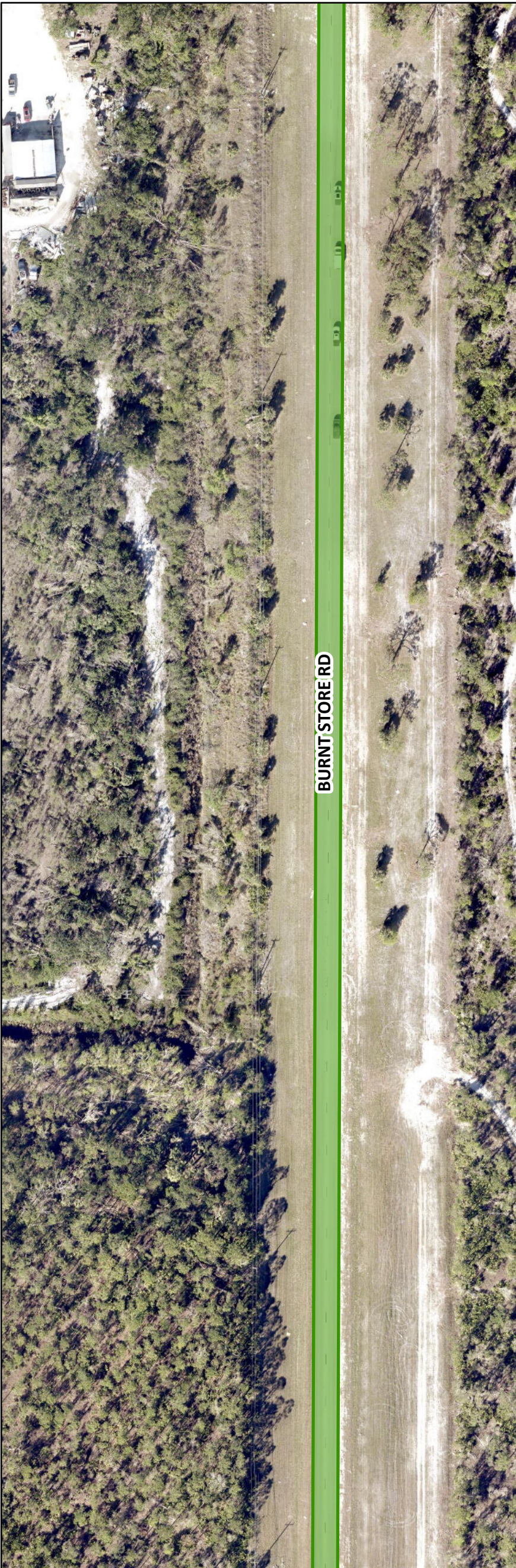
Checked By: FJL

Date: 3/5/2024

**COUNTYWIDE**

**Sheet 8 of 11**

# RESURFACING AERIAL LAYOUT LOCATION MAP



**Resurfacing Project  
Location Map  
Countywide Arterial Roads**



COUNTYWIDE  
ARTERIAL  
RESURFACING  
3FY2025D

Public Works  
Southwest  
Florida  
(239)533-8900

Dept of Transportation  
1500 Monroe St  
Ft Myers, Florida, 33901

Drawn By: DRW

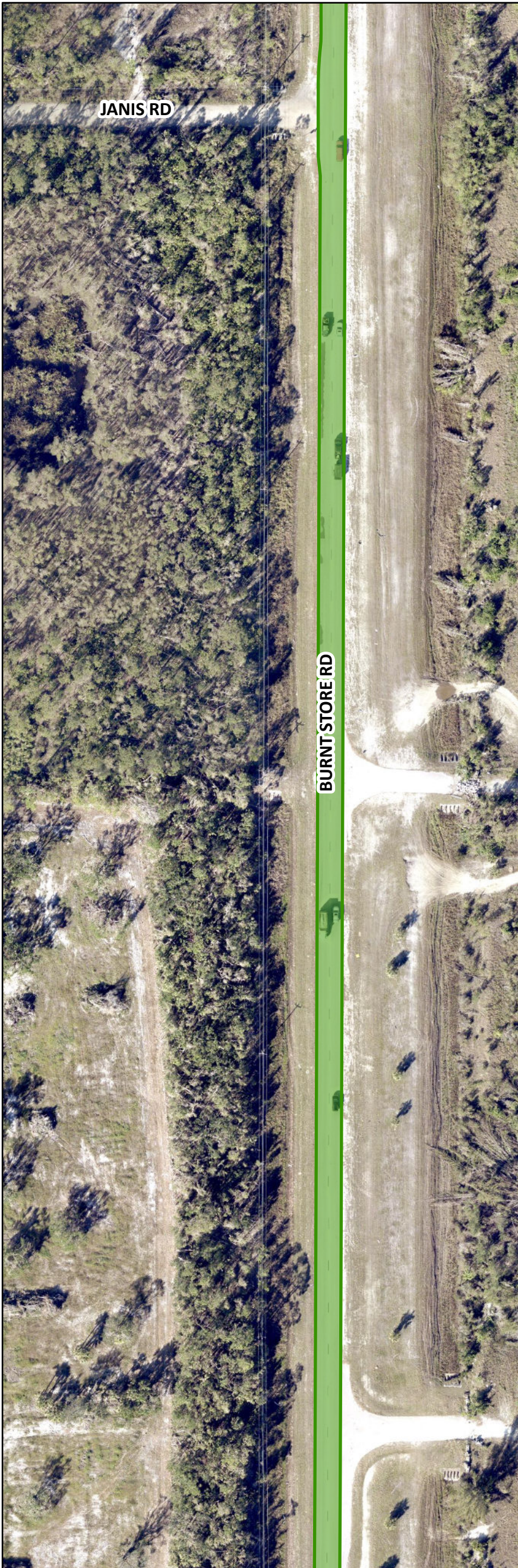
Checked By: FJL

Date: 3/5/2024

**COUNTYWIDE**

**Sheet 9 of 11**

# RESURFACING AERIAL LAYOUT LOCATION MAP



**LEGEND**

MILL & OVERLAY LIMITS

**Resurfacing Project  
Location Map  
Countywide Arterial Roads**



COUNTYWIDE  
ARTERIAL  
RESURFACING  
3FY2025D

Public Works  
Southwest  
Florida  
(239)533-8900

Dept of Transportation  
1500 Monroe St  
Ft Myers, Florida, 33901

Drawn By: DRW

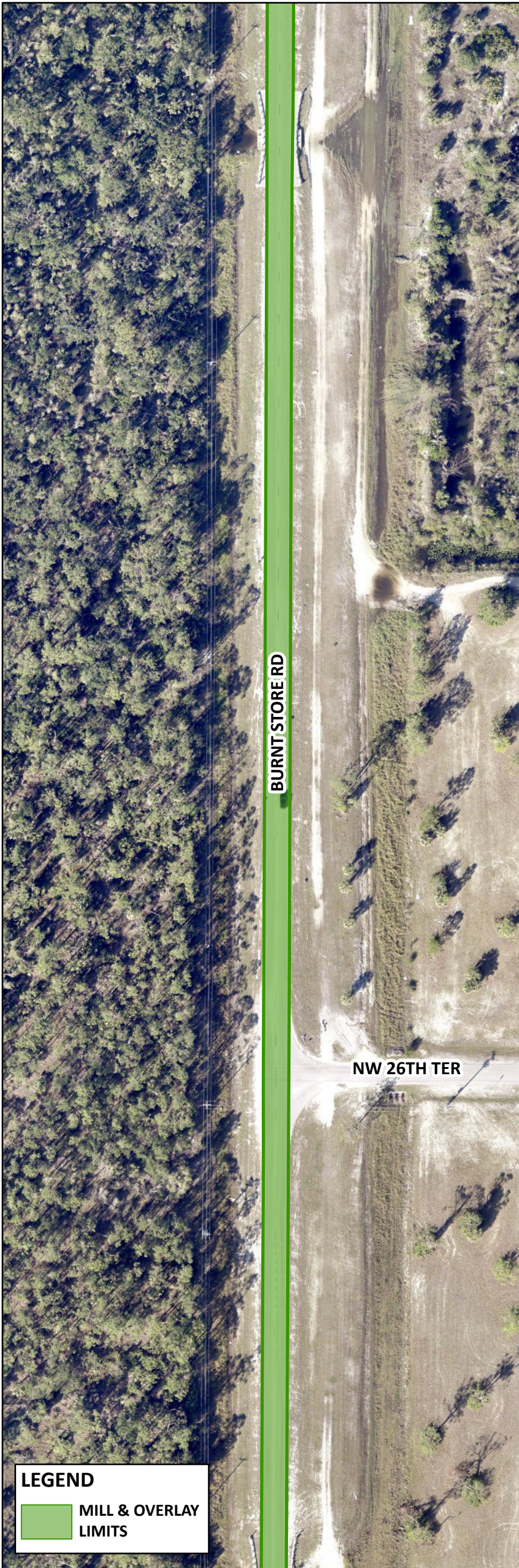
Checked By: FJL

Date: 3/5/2024

**COUNTYWIDE**

**Sheet 10 of 11**

# RESURFACING AERIAL LAYOUT LOCATION MAP



**LEGEND**

MILL & OVERLAY LIMITS

**Resurfacing Project  
Location Map  
Countywide Arterial Roads**



COUNTYWIDE  
ARTERIAL  
RESURFACING  
3FY2025D

Public Works  
Southwest  
Florida  
(239)533-8900

Dept of Transportation  
1500 Monroe St  
Ft Myers, Florida, 33901

Drawn By: DRW  
Checked By: FJL  
Date: 3/5/2024

COUNTYWIDE

Sheet 11 of 11