

CITY OF FORT MYERS

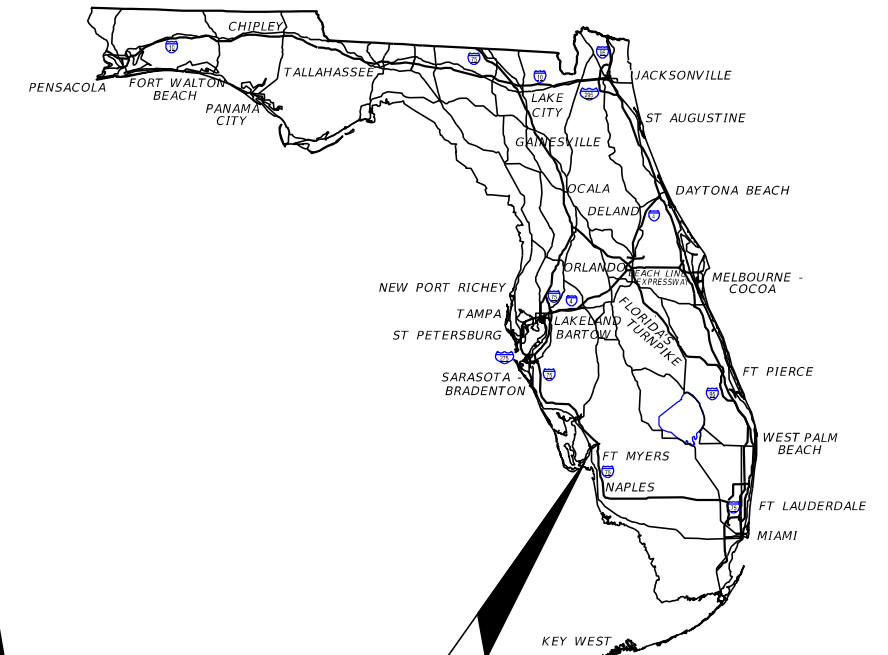
*PARKING LOT MODIFICATIONS
AT BUREAU OF CORRECTIONS*

INDEX OF ROADWAY PLANS

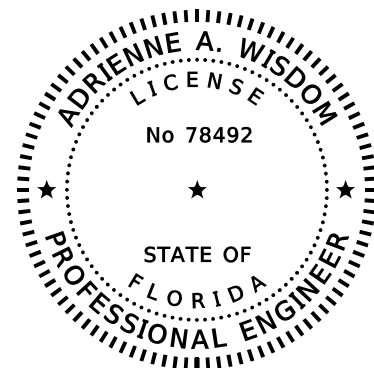
SHEET NO.	SHEET DESCRIPTION
1	KEY SHEET
2	SUMMARY OF PAY ITEMS
3	GENERAL NOTES
4-5	ROADWAY PLAN
6-7	GRADING PLAN
8-9	STORM WATER POLLUTION PREVENTION PLAN (SWPPP)
10-11	SIGNING & PAVEMENT MARKINGS
SQ-1	SUMMARY OF QUANTITIES

2501 ORTIZ AVENUE, FORT MYERS

PROJECT LOCATION



PROJECT LOCATION
<https://goo.gl/maps/pkUqGrXMONMU8KZv7>



THIS ITEM HAS BEEN DIGITALLY
SIGNED AND SEALED BY

ON THE DATE ADJACENT TO THE SEAL

PRINTED COPIES OF THIS DOCUMENT ARE
NOT CONSIDERED SIGNED AND SEALED
AND THE SIGNATURE MUST BE VERIFIED
ON ANY ELECTRONIC COPIES.

KISINGER CAMPO & ASSOCIATES CORP.
13461 PARKER COMMONS BLVD, SUITE 104
FORT MYERS, FL 33912
ADRIENNE A. WISDOM, P.E. NO.: 78492

GOVERNING STANDARD PLANS:

Florida Department of Transportation, FY 2022-23 Standard Plans for Road and Bridge Construction and applicable Interim Revisions (IRs).

Standard Plans for Road Construction and associated IRs are available at the following website: <http://www.fdot.gov/design/standardplans>

GOVERNING STANDARD SPECIFICATIONS:

Florida Department of Transportation, July 2022 Standard Specifications for Road and Bridge Construction at the following website: <http://www.fdot.gov/programmanagement/Implemented/SpecBooks>



ROADWAY PLANS

ENGINEER OF RECORD:

ADRIENNE A. WISDOM, P.E.
P.E. NO.: 78492
KISINGER CAMPO AND ASSOCIATES CORP.
CONSULTING ENGINEERS & PLANNERS
13461 PARKER COMMONS BLVD., SUITE 104
FORT MYERS, FLORIDA 33912
PHONE: (239) 278-5999
FAX: (239) 278-1776
CONTRACT NO. RFQ 0024-20

CITY OF FORT MYERS PROJECT MANAGER:

CARL KARAKOS

SHEET
NO.

1

THE OFFICIAL RECORD OF THIS SHEET IS THE ELECTRONIC FILE DIGITALLY SIGNED AND SEALED UNDER RULE 61G15-23.004, F.A.C.

CITY OF FORT MYERS
PROJECT SUMMARY OF PAY ITEMS
2501 ORTIZ AVENUE

ITEM NO.	ITEM DESCRIPTION	UNIT	QTY,
ROADWAY ITEMS			
101-1	MOBILIZATION	LS	1
102-1	MAINTENANCE OF TRAFFIC	LS	1
107-1	LITTER REMOVAL AND DISPOSAL	AC	0.09
107-2	MOWING	AC	0.08
110-1-1	CLEARING & GRUBBING	AC	0.21
110-4-10	REMOVAL OF EXISTING CONCRETE	SY	10
120-6	EMBANKMENT	CY	62.4
160-4	TYPE B STABILIZATION	SY	349
285-703	OPTIONAL BASE GROUP 3	SY	325
327-70-6	MILLING EXISTING ASPHALT PAVEMENT, 1 1/2" AVG DEPTH	SY	289
334-1-12	SUPERPAVE ASPHALTIC CONCRETE, TRAFFIC B	TN	50.6
520-2-4	CONCRETE CURB, TYPE D	LF	407
570-1-2	PERFORMANCE TURF, SOD	SY	389
DRAINAGE ITEMS			
104-10-3	SEDIMENT BARRIER	LF	333
104-18	INLET PROTECTION SYSTEM	EA	4
SIGNING AND PAVEMENT MARKINGS ITEMS			
0700 1 11	SINGLE POST SIGN, F&I GROUND MOUNT, UP TO 12 SF	AS	3
0700 1 50	SINGLE POST SIGN, RELOCATE	AS	1
0700 1 60	SINGLE POST SIGN, REMOVE	AS	6
0711 11 125	THERMOPLASTIC, STANDARD, WHITE, SOLID, 24" FOR STOP LINE AND CROSSWALK	LF	33
0711 16 101	THERMOPLASTIC, STANDARD-OTHER SURFACES, WHITE, SOLID, 6"	GM	0.061
711-16-201	THERMOPLASTIC, STANDARD-OTHER SURFACES, YELLOW, SOLID, 6"	GM	0.015
0711 17 1	THERMOPLASTIC, REMOVE EXISTING THERMOPLASTIC PAVEMENT MARKINGS- SURFACE TO REMAIN	SF	80

REVISIONS				KCA KISINGER CAMPO & ASSOCIATES P.E. No.: 78492	CITY OF FORT MYERS			SUMMARY OF PAY ITEMS	SHEET NO.
DATE	DESCRIPTION	DATE	DESCRIPTION		ROAD	CITY	CONTRACT NO.		2
					2501 ORTIZ AVE.	FORT MYERS	RFO 0024-20		

THE OFFICIAL RECORD OF THIS SHEET IS THE ELECTRONIC FILE DIGITALLY SIGNED AND SEALED UNDER RULE 61G15-23.004, F.A.C.

GENERAL NOTES:

1. THE HORIZONTAL CONTROL FOR THIS PROJECT IS BASED ON THE FLORIDA STATE PLANE COORDINATE SYSTEM, WEST ZONE, NAD83 (2011). ELEVATIONS ARE BASED ON THE NORTH AMERICAN VERTICAL DATUM OF 1988 (NAVD 88).
2. ALL SURVEY INFORMATION WAS OBTAINED FROM A LICENSED FLORIDA PROFESSIONAL SURVEYOR AND MAPPER AND UTILIZED AS SUPPORTING DATA IN THE PRODUCTION OF DESIGN PLANS AND FOR CONSTRUCTION ON SUBJECT PROJECT. THE PROFESSIONAL SURVEYOR AND MAPPER OF RECORD IS:
SCOTT URQUHART, PSM
PSM NO.: LS4920
5670 ZIP DRIVE
FORT MYERS, FL 33905
CERTIFICATE OF AUTHORIZATION: LB8336
3. EXISTING DRAINAGE STRUCTURES AND PIPES WITHIN THE PROJECT LIMITS ARE TO REMAIN.
4. AT THE COMPLETION OF THE PROJECT ALL DISTURBED SURFACES MUST BE COVERED BY SOD.
5. NO DROP-OFF CONDITIONS ARE ALLOWED TO REMAIN. NO MATERIALS, EQUIPMENT, ETC. MUST BE STORED WITHIN THE WORK ZONE WHILE THE WORK ZONE IS INACTIVE.
6. DETERMINE AND COMPLY WITH ALL APPLICABLE COUNTY AND MUNICIPAL ORDINANCES.
7. ANY FORM OF UNPERMITTED STORM WATER DISCHARGE MUST NOT BE INTRODUCED INTO THE RIGHT OF WAY DURING OR AFTER CONSTRUCTION.
8. ANY PUBLIC LAND CORNER WITHIN THE LIMITS OF CONSTRUCTION IS TO BE PROTECTED. IF A CORNER MONUMENT IS IN DANGER OF BEING DESTROYED AND HAS NOT BEEN PROPERLY REFERENCED, LEE COUNTY MUST BE NOTIFIED, WITHOUT DELAY, BY TELEPHONE AT (239) 533-8117.
9. EXISTING TRAFFIC/ACCESS, EXISTING DRAINAGE AND EXISTING UTILITIES MUST BE MAINTAINED DURING CONSTRUCTION UNLESS OTHERWISE APPROVED BY THE CITY OF FORT MYERS.
10. PAYMENT FOR ACQUISITION OF CONSTRUCTION RELATED PERMITS MUST BE INCIDENTAL TO THE COST OF CONSTRUCTION RELATED ACTIVITIES. NO ADDITIONAL PAYMENT MUST BE MADE.
11. A STORMWATER POLLUTION PREVENTION PLAN MUST BE IMPLEMENTED AND ABIDE ALL NPDES REQUIREMENTS.
12. EXISTING CONCRETE CURB AND GUTTER, CONCRETE SEPARATOR AND CONCRETE SIDEWALK WITHIN THE ORTIZ AVE. RIGHT OF WAY ARE TO REMAIN UNLESS OTHERWISE NOTED IN THE PLANS.
13. ALL DIMENSIONS AND ELEVATIONS MUST BE VERIFIED PRIOR TO COMMENCEMENT OF CONSTRUCTION. ANY DEVIATION IN PLAN INFORMATION MUST BE REPORTED TO THE ENGINEER AND OWNER'S REPRESENTATIVE IMMEDIATELY.
14. SAWCUT ALL SIDES OF THE EXISTING PAVEMENT AT ALL WIDENING AREAS.

SIGNING AND PAVEMENT MARKING NOTES:


1. ALL SIGNING AND PAVEMENT MARKINGS MUST BE IN ACCORDANCE WITH THE F.D.O.T. STANDARDS FOR ROAD AND BRIDGE CONSTRUCTION, LATEST EDITION, THE F.D.O.T. ROADWAY AND TRAFFIC DESIGN STANDARDS LATEST EDITION AND THE MANUAL ON UNIFORM TRAFFIC CONTROL DEVICES (MUTCD).
 - a. PARKING SPACES MUST BE DELINEATED BY ALL-WEATHER PAINTED LINES, OR THERMOPLASTIC STRIPING, NOT LESS THAN FOUR INCHES IN WIDTH, CENTERED ON THE DIVIDING LINE BETWEEN SPACES.
2. MATCH EXISTING PAVEMENT MARKINGS AT EXISTING ROADS AND FACILITIES.
3. REMOVE ANY EXISTING SIGNS OR PAVEMENT MARKINGS IN CONFLICT WITH THOSE SHOWN ON PLANS.
4. ALL STOP SIGN LOCATIONS MUST INCLUDE A 24" PAINTED WHITE STOP BAR UNLESS NOTED OTHERWISE.
5. COMPLY WITH THE "STATE OF FLORIDA MANUAL OF TRAFFIC CONTROL AND SAFE PRACTICES FOR STREET AND HIGHWAY CONSTRUCTION, MAINTENANCE, AND UTILITY OPERATIONS" AND WITH THE "MANUAL ON UNIFORM TRAFFIC CONTROL DEVICES".
6. ALL SIGNING, PAVEMENT MARKINGS, STREET NAME SIGNS, ETC. ARE TO BE INCLUDED IN THE LUMP SUM PRICE FOR SIGNING AND MARKING.
7. FURNISH AND INSTALL STREET NAME SIGNS IN ACCORDANCE WITH THE CITY OF FORT MYERS DEVELOPMENT STANDARDS.

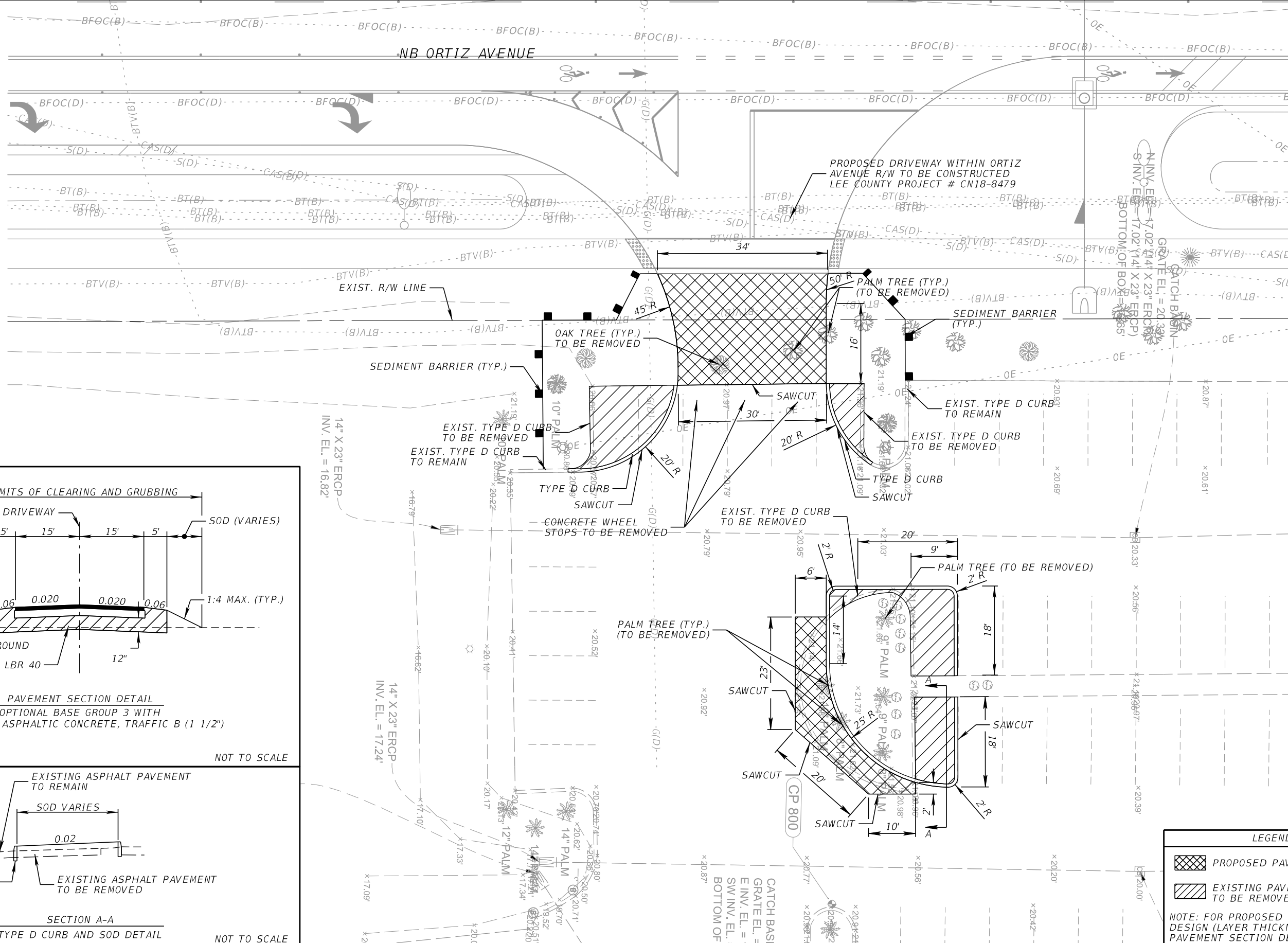
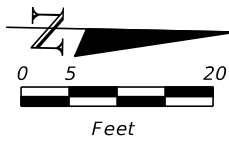
UTILITY NOTES:

1. THE LOCATIONS OF THE EXISTING UTILITIES SHOWN IN THE PLANS ARE BASED ON LIMITED INVESTIGATION TECHNIQUES AND SHOULD BE CONSIDERED APPROXIMATE ONLY.
2. CALL SUNSHINE 811 AT 1-800-432-4770 AND THE UTILITY OWNERS TWO FULL BUSINESS DAYS BEFORE BEGINNING WORK. ALL UTILITIES MAY NOT BE MEMBERS OF SUNSHINE 811 AND WILL THEREFORE REQUIRE DIRECT CONTACT.
3. ALL UTILITY OWNERS WITHIN THE PROJECT'S LIMITS MUST BE CONTACTED FOR COORDINATION ON THE PROPOSED RELOCATION/INSTALLATION SCHEDULES FOR ALL IMPACTED UTILITIES PRIOR TO THE BEGINNING OF CONSTRUCTION. IDENTIFYING AND VERIFYING THE EXACT LOCATION OF ALL EXISTING UTILITIES.

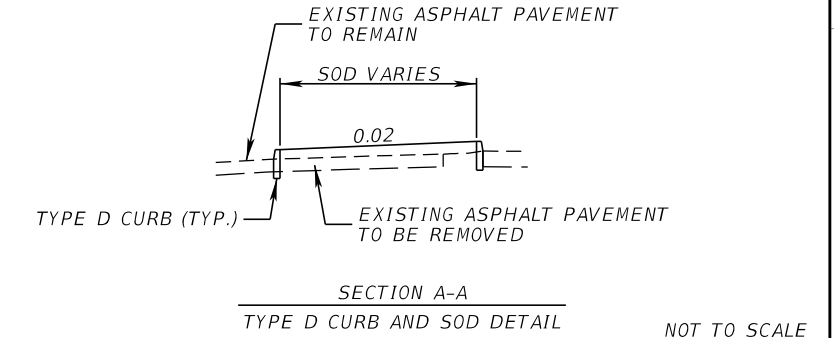
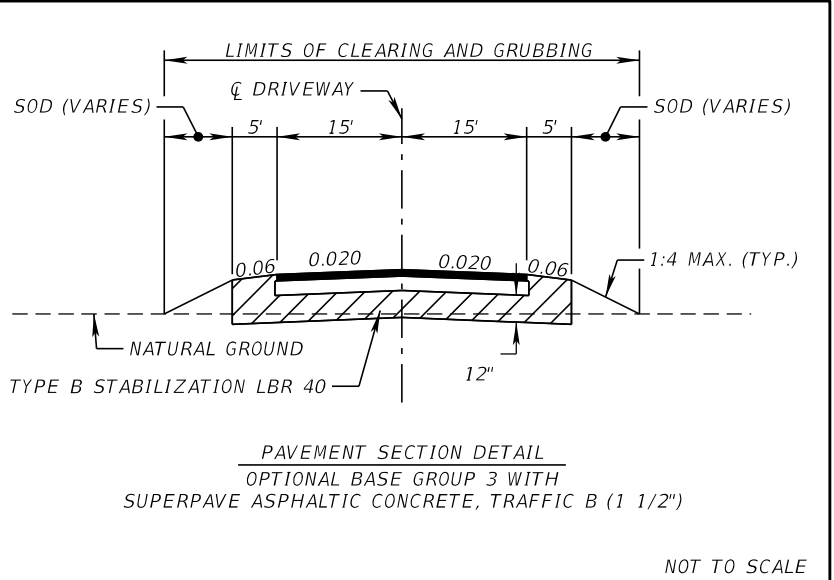
UTILITY AGENCY OWNERS:	COMPANY	CONTACT	TELEPHONE NUMBERS
	AT&T	MICHAEL GAMBOA	(863) 888-8300
	CENTURY LINK	VIVIAN MCKEON	(630) 217-9384
	CITY OF FORT MYERS	ANGELO THOMAS	(239) 321-7463
	COMCAST	SCOTT LETZELTER	(239) 986-6975
	CROWN CASTLE	CHUCK FERGUSON	(570) 872-6637
	FP&L DISTRIBUTION	CHRIS MCJUNKIN	(941) 423-4833
	LEE COUNTY UTILITIES	WILLIAM HULL	(239) 533-8162
	LEE COUNTY TECHNOLOGY	ADAM BOISSIERE	(239) 533-7371
	LEE COUNTY TRAFFIC	MICHAEL PADGETT	(239) 533-9500
	SUMMIT	BETSY BECKER	(407) 468-5735
	TECO PEOPLE'S GAS	ANTHONY BAUBLITZ	(941) 342-4025

4. SOME EXISTING POWER POLES MAY BE LOCATED IN THE BACK SLOPE OF THE PROPOSED IMPROVEMENTS. ADDITIONAL CARE WHILE GRADING MUST BE TAKEN.

REVISIONS				 13461 Parker Commons Blvd, Suite 104 Fort Myers, Florida 33912 Engineer of Record: Adrienne A. Wisdom & ASSOCIATES P.E. No.: 78492	CITY OF FORT MYERS			SHEET NO. GENERAL NOTES 3
DATE	DESCRIPTION	DATE	DESCRIPTION		ROAD	CITY	CONTRACT NO.	
					2501 ORTIZ AVE.	FORT MYERS	RFO 0024-20	



MATCHLINE



LEGEND

- PROPOSED PAVEMENT
- EXISTING PAVEMENT TO BE REMOVED & SODDED

NOTE: FOR PROPOSED PAVEMENT DESIGN (LAYER THICKNESS) SEE THE PAVEMENT SECTION DETAIL

REVISIONS			
DATE	DESCRIPTION	DATE	DESCRIPTION

KCA
KISINGER CAMPO & ASSOCIATES P.E. No.: 78492

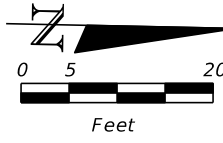
13461 Parker Commons Blvd, Suite 104
Fort Myers, Florida 33912
Engineer of Record: Adrienne A. Wisdom

CITY OF FORT MYERS		
ROAD	CITY	CONTRACT NO.
2501 ORTIZ AVE.	FORT MYERS	RFQ 0024-20

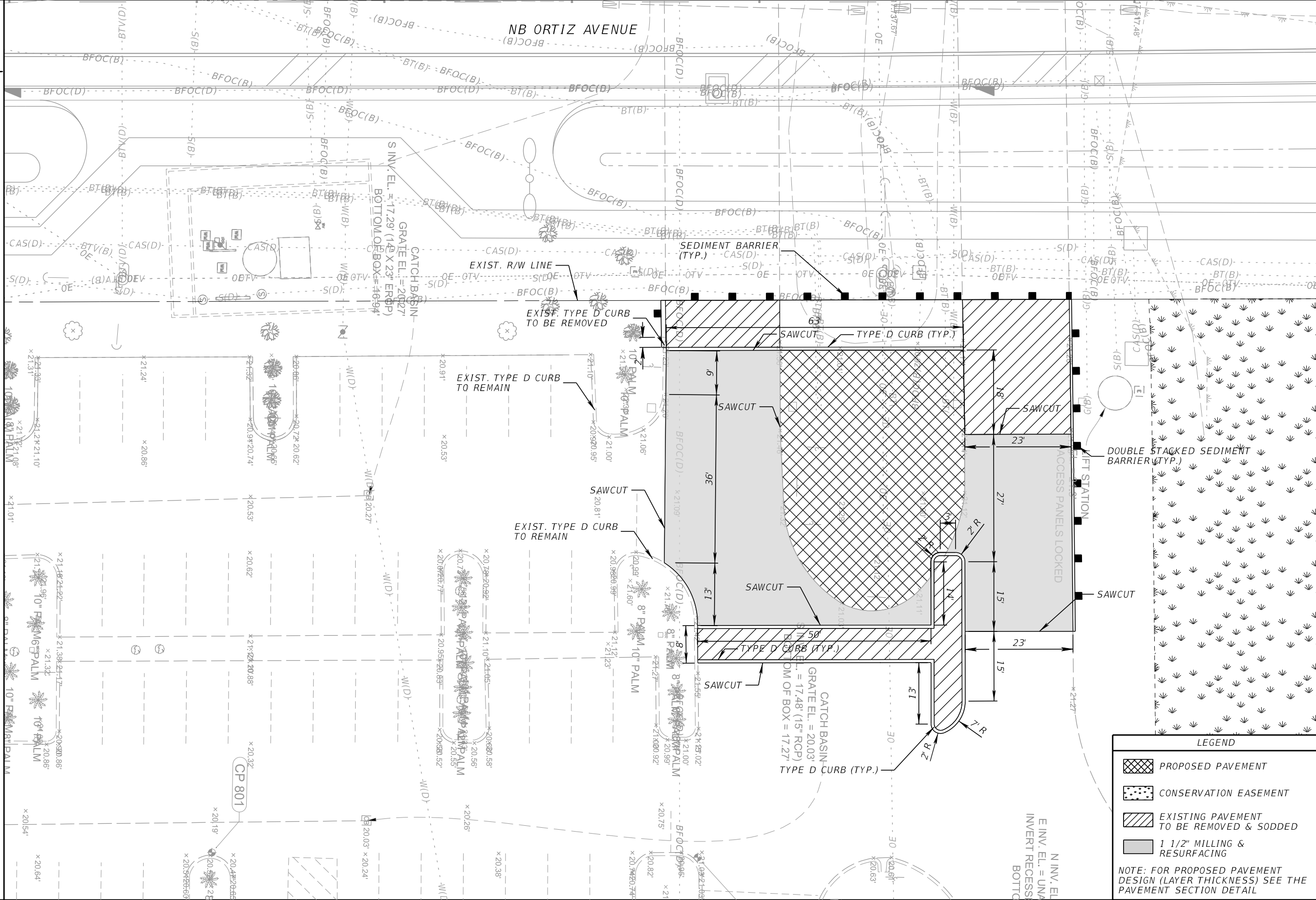
ROADWAY PLAN (1)

SHEET NO.
4

THE OFFICIAL RECORD OF THIS SHEET IS THE ELECTRONIC FILE DIGITALLY SIGNED AND SEALED UNDER RULE 61G15-23.004, F.A.C.



MATCHLINE



REVISIONS

DATE	DESCRIPTION	DATE	DESCRIPTION

KCA
KISINGER CAMPO & ASSOCIATES P.E. No.: 78492

13461 Parker Commons Blvd, Suite 104
Fort Myers, Florida 33912
Engineer of Record: Adrienne A. Wisdom

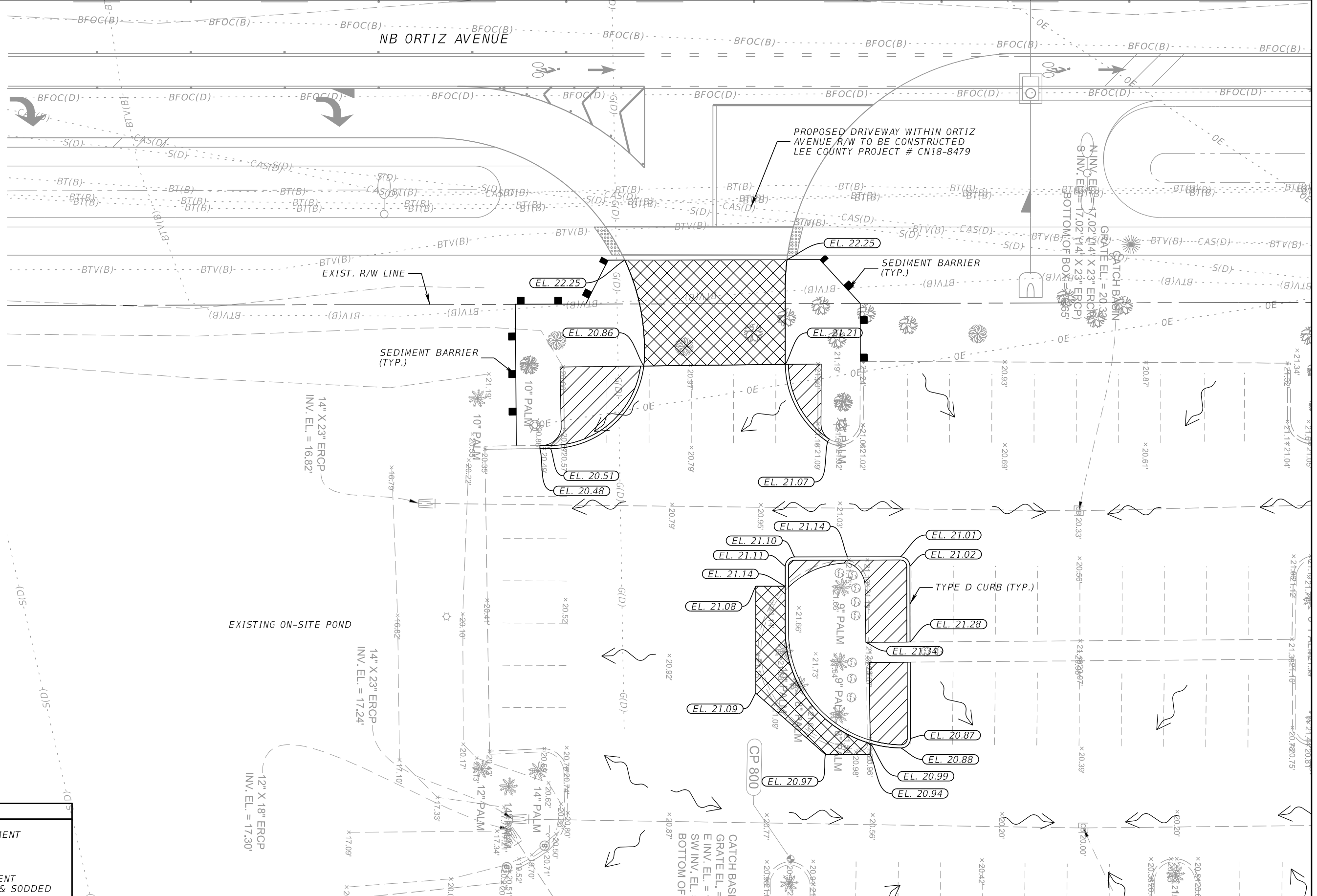
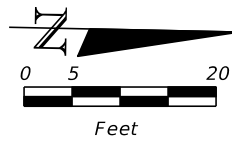
CITY OF FORT MYERS

ROAD	CITY	CONTRACT NO.
2501 ORTIZ AVE.	FORT MYERS	RFQ 0024-20

ROADWAY PLAN (2)

SHEET NO.
5

THE OFFICIAL RECORD OF THIS SHEET IS THE ELECTRONIC FILE DIGITALLY SIGNED AND SEALED UNDER RULE 61G15-23.004, F.A.C.



LEGEND	
	PROPOSED PAVEMENT
	FLOW ARROW
	EXISTING PAVEMENT TO BE REMOVED & SODDED

REVISIONS			
DATE	DESCRIPTION	DATE	DESCRIPTION

KCA 13461 Parker Commons Blvd, Suite 104
 Fort Myers, Florida 33912
 Engineer of Record: Adrienne A. Wisdom
 & ASSOCIATES P.E. No.: 78492

CITY OF FORT MYERS		
ROAD	CITY	CONTRACT NO.
2501 ORTIZ AVE.	FORT MYERS	RFQ 0024-20

GRADING PLAN (1)		SHEET NO. 6
-------------------------	--	-----------------------

THE OFFICIAL RECORD OF THIS SHEET IS THE ELECTRONIC FILE DIGITALLY SIGNED AND SEALED UNDER RULE 61G15-23.004, F.A.C.

THE FOLLOWING NARRATIVE OF THE STORMWATER POLLUTION PREVENTION PLAN CONTAINS REFERENCES TO THE STANDARD SPECIFICATIONS FOR ROAD AND BRIDGE CONSTRUCTION, THE DESIGN STANDARDS, AND OTHER SHEETS OF THESE CONSTRUCTION PLANS. THE FIRST SHEET OF THE CONSTRUCTION PLANS CONTAINS AN INDEX TO THE OTHER SHEETS. THE COMPLETE STORMWATER POLLUTION PREVENTION PLAN INCLUDES SEVERAL ITEMS: THIS NARRATIVE DESCRIPTION, THE DOCUMENTS REFERENCED IN THIS NARRATIVE, THE CONTRACTOR'S APPROVED EROSION CONTROL PLAN REQUIRED BY SPECIFICATION 104 AND REPORTS OF INSPECTIONS MADE DURING CONSTRUCTION.

1.0 SITE DESCRIPTION

1.A. NATURE OF CONSTRUCTION ACTIVITY:

THE PURPOSE OF THIS PROJECT IS TO CONSTRUCT A NEW DRIVEWAY CONNECTION FOR THE LEE COUNTY CORRECTIONAL FACILITY TO ORTIZ AVENUE AND CLOSE THE EXISTING CONNECTION. THIS INVOLVES RECONSTRUCTING A PAVED DRIVEWAY CONNECTION FOR THE NEW CONNECTION AND THE RECONFIGURATION OF THE EXISTING ACCESS TO CONVERT INTO ADDITIONAL PARKING SPACES.

1.B. SEQUENCE OF MAJOR SOIL DISTURBING ACTIVITIES:

PREPARE A SITE SPECIFIC EROSION CONTROL PLAN ALONG WITH A DETAILED CONSTRUCTION SCHEDULE TO INDICATE DATES OF GRADING ACTIVITIES AND DETERMINE SEQUENCES OF TEMPORARY AND PERMANENT SOIL DISTURBING ACTIVITIES ON ALL PORTIONS OF THE PROJECT. APPLICABLE EROSION CONTROL DEVICES AND IMPLEMENTATION PROCEDURES ARE SUPPLIED IN THE FDOT EROSION & SEDIMENT CONTROL MANUAL. THE CONTRACTOR IS RESPONSIBLE FOR DETERMINING IF ANY MODIFICATIONS OR ADDITIONAL CONTROLS ARE REQUIRED AND FOR MODIFYING THE CONSTRUCTION SCHEDULE FOR THE IMPLEMENTATION OF ALL ADDITIONAL EROSION CONTROL DEVICES.

- FOR EACH CONSTRUCTION PHASE, INSTALL PERIMETER CONTROLS AFTER CLEARING AND GRUBBING NECESSARY FOR INSTALLATION OF CONTROLS BUT BEFORE BEGINNING OTHER WORK IN THE CONSTRUCTION PHASE.
- INSTALL SEDIMENT BARRIER WHERE LISTED IN THE CONTRACTOR'S APPROVED EROSION CONTROL PLAN FOR PERIMETER CONTROLS BEFORE THE LAND IS DISTURBED.
- PROVIDE INLET PROTECTION WHERE LISTED IN THE CONTRACTOR'S APPROVED EROSION CONTROL PLAN.
- COVER AND STABILIZE DISTURBED AREAS AS SOON AS POSSIBLE.
- DO NOT DISTURB AN AREA UNTIL IT IS NECESSARY FOR CONSTRUCTION TO PROCEED.
- TIME CONSTRUCTION ACTIVITIES TO LIMIT IMPACT FROM SEASONAL CLIMATE CHANGES OR WEATHER EVENTS.
- REMOVE PERIMETER CONTROLS ONLY AFTER ALL UPSTREAM AREAS ARE FULLY STABILIZED AND PERMANENT GRASSING IS ESTABLISHED.

1.C. AREA ESTIMATES:

TOTAL SITE AREA: 2.67 ac
TOTAL AREA TO BE DISTURBED: 0.15 ac

1.D. RUNOFF DATA

RUNOFF COEFFICIENTS:
GRASSED ISLANDS IN PARKING LOT: C=0.25
IMPERVIOUS ROADWAYS AND PAVED SHOULDERS: C=0.95
DISTURBED AREAS, EXPOSED SOIL DURING CONST.: C=0.40

WEIGHTED RUN-OFF COEFFICIENT:
BEFORE: Cw(B) =0.47
DURING: Cw(D) =0.40
AFTER: Cw(A) =0.58

THE RUNOFF COEFFICIENT DURING CONSTRUCTION Cw(D), IS CALCULATED ASSUMING THAT THE MAXIMUM ALLOWABLE AREA OF SOIL IS DISTURBED DURING CONSTRUCTION, AND THE REMAINING AMOUNT IS THE EXISTING IMPERVIOUS AND GRASSED SHOULDER AREAS.

SOILS DATA:
THE SOILS WITHIN THE PROJECT LIMITS ARE CYPRESS LAKE FINE SAND AND MATLACHA GRAVELLY FINE SAND. THE SEASONAL HIGH GROUNDWATER TABLE IS 3" TO 42".

OUTFALL INFORMATION:

- DESCRIPTION: MITERED END SECTION
LOCATION: LAT 26°37'57.42", LONG 81°48'38.83"
RECEIVING WATER: ON-SITE POND SOUTH SIDE OF PARKING LOT.
- DESCRIPTION: MITERED END SECTION
LOCATION: LAT 26°37'57.42", LONG 81°48'38.81"
RECEIVING WATER: ON-SITE POND SOUTH SIDE OF PARKING LOT.

OUTFALL INFORMATION (CONTINUED):

- DESCRIPTION: MITERED END SECTION
LOCATION: LAT 26°37'57.21", LONG 81°48'39.57"
RECEIVING WATER: ON-SITE POND SOUTH SIDE OF PARKING LOT.

1.E. SITE MAP

THE CONSTRUCTION PLANS ARE BEING USED AS THE SITE MAPS. THE LOCATION OF THE REQUIRED INFORMATION IS DESCRIBED BELOW. THE SHEET NUMBERS FOR THE PLAN SHEETS REFERENCED ARE IDENTIFIED ON THE KEY SHEET OF THESE CONSTRUCTION PLANS.

- DRAINAGE PATTERNS: FLOW DIRECTION IS SHOWN ON THE GRADING PLANS. CHANGES TO THE EXISTING DRAINAGE PATTERNS ARE NOT ANTICIPATED.
- APPROXIMATE SLOPES: APPROXIMATE SLOPES FOR IMPERVIOUS SURFACE IS 2.0%. APPROXIMATE SLOPES OF GRASSED AREAS IS 1:4 MAXIMUM.
- AREAS OF SOIL DISTURBANCE: THE AREAS TO BE DISTURBED ARE INDICATED ON THE PLAN SHEETS. ANY AREAS WHERE PERMANENT FEATURES ARE SHOWN TO BE CONSTRUCTED ABOVE OR BELOW GROUND, WILL BE DISTURBED.
- LOCATIONS OF TEMPORARY CONTROLS: SINCE THE DRAINAGE PATTERNS ARE EXPECTED TO REMAIN AS EXISTING, NO TEMPORARY CONTROL IS NEEDED.
- LOCATION OF PERMANENT CONTROLS: THE STORM WATER POND IS THE PRIMARY PERMANENT STORM WATER MANAGEMENT CONTROLS. THESE ARE LOCATED ON THE SOUTH SIDE OF THE PARKING LOT AS SHOWN IN THE PLAN SHEETS.
- AREAS TO BE STABILIZED: AREAS TO BE STABILIZED ARE SHOWN IN THE PLAN SHEETS.
- SURFACE WATERS: N/A
- DISCHARGE POINTS TO SURFACE WATERS: N/A

1.F. RECEIVING WATERS

SEE ITEM 1.D FOR THE OUTFALL LOCATIONS AND RECEIVING WATER NAMES. NO WETLAND AREAS ON THE PROJECT SITE WILL BE IMPACTED.


2.0 CONTROLS

2.A EROSION AND SEDIMENT CONTROLS

- SEDIMENT BARRIERS SHOULD BE USED ALONG THE AREA OF THE PROJECT WHERE THE GROUND SLOPES AWAY FROM THE PROPERTY, PROJECT AREA, WORK AREA, OR WHERE THERE IS POTENTIAL FOR SEDIMENT TO BE TRANSPORTED OFFSITE.
- ALL EROSION CONTROL DEVICES SHALL BE INSTALLED ACCORDING TO THE CONTRACT DOCUMENTS & THE CONTRACTOR'S APPROVED EROSION CONTROL PLAN.
- ANY TEMPORARY MATERIAL USED FOR POLLUTION OR EROSION & SEDIMENT CONTROL DURING CONSTRUCTION SHALL BE REMOVED AT THE COMPLETION OF THE PROJECT & FINAL STABILIZATION OF THE PROJECT HAS BEEN ACHIEVED.

2.A.1. STABILIZATION PRACTICES

STABILIZATION MEASURES, SUCH AS PERFORMANCE SODDING OR SEEDING OF SIDE SLOPES SHALL BE INITIATED AS SOON AS PRACTICABLE IN PORTIONS OF THE SITE WHERE CONSTRUCTION ACTIVITIES HAVE TEMPORARILY OR PERMANENTLY CEASED. IN NO CASE SHALL THE STABILIZATION MEASURES BE CONDUCTED LONGER THAN 7 DAYS AFTER THE CONSTRUCTION ACTIVITY TEMPORARILY OR PERMANENTLY CEASES. ANY SLOPES 1:3 OR GREATER WILL HAVE SOD STAKED IN PLACE.

REVISIONS				 13461 Parker Commons Blvd, Suite 104 Fort Myers, Florida 33912 Engineer of Record: Adrienne A. Wisdom & ASSOCIATES P.E. No.: 78492	CITY OF FORT MYERS			STORMWATER POLLUTION PREVENTION PLAN	SHEET NO.
DATE	DESCRIPTION	DATE	DESCRIPTION		ROAD	CITY	CONTRACT NO.		
					2501 ORTIZ AVE.	FORT MYERS	RFO 0024-20		8

2.A.2 STRUCTURAL PRACTICES INCLUDE:

IN THE SEDIMENT AND EROSION CONTROL PLAN, PROPOSED STRUCTURAL PRACTICES MUST BE DESCRIBED TO CONTROL OR TRAP SEDIMENT AND OTHERWISE PREVENT THE DISCHARGE OF POLLUTANTS FROM EXPOSED AREA OF THE SITE. SEDIMENT CONTROLS SHALL BE IN PLACE BEFORE DISTURBING SOIL UPSTREAM OF THE CONTROL. THE STRUCTURAL PRACTICES SHALL INCLUDE AT LEAST THE FOLLOWING.

- STAKED SILT FENCE SHALL BE USED ALONG THE LENGTH OF THE PROJECT AT THE CONSTRUCTION LIMITS AND WHERE THERE IS POTENTIAL FOR SEDIMENT TO BE DIRECTED OFF-SITE AND AROUND THE PERIMETER OF STOCKPILE AREAS.
- SYNTHETIC BALES AND SAND BAGS SHALL GENERALLY BE INSTALLED AT PROPOSED AND EXISTING DITCH BOTTOM INLET LOCATIONS AND AROUND PARTIAL INLETS AND AS DITCH BLOCKS TO AVOID DOWNSTREAM SILTATION.
- INLET PROTECTIONS SYSTEMS SHALL BE USED ON EXISTING INLETS REQUIRING PROTECTION.

2.C. OTHER CONTROLS

2.C.1. WASTE DISPOSAL

IN THE SEDIMENT AND EROSION CONTROL PLAN, PROPOSED METHODS MUST BE DESCRIBED TO PREVENT THE DISCHARGE OF SOLID MATERIALS, INCLUDING BUILDING MATERIALS, TO WATER OF THE UNITED STATES. THE PROPOSED METHODS SHALL INCLUDE AT LEAST THE FOLLOWING, UNLESS OTHERWISE APPROVED BY THE ENGINEER.

- PROVIDING LITTER CONTROL AND COLLECTION WITHIN THE PROJECT DURING CONSTRUCTION ACTIVITIES.
- DISPOSING OF ALL FERTILIZER OR OTHER CHEMICAL CONTAINERS ACCORDING TO EPA'S STANDARD PRACTICES AS DETAILED BY THE MANUFACTURER.
- DISPOSING OF SOLID MATERIALS INCLUDING BUILDING AND CONSTRUCTION MATERIALS OFF THE PROJECT SITE BUT NOT IN SURFACE WATERS OR WETLANDS.
- ALL SANITARY WASTE WILL BE COLLECTED FROM PORTABLE UNITS BY A LICENSED SANITARY WASTE MANAGEMENT CONTRACTOR AS REQUIRED BY STATE REGULATIONS.

2.C.2. OFF-SITE VEHICLE TRACKING AND DUST CONTROL

IN THE SEDIMENT AND EROSION CONTROL PLAN, THE CONTRACTOR SHALL DESCRIBE THE PROPOSED METHODS FOR MINIMIZING OFF-SITE VEHICLE TRACKING OF SEDIMENTS AND GENERATING DUST. THE PROPOSED METHODS SHALL INCLUDE AT LEAST THE FOLLOWING UNLESS OTHERWISE APPROVED BY THE ENGINEER.

- COVERING LOADED HAUL TRUCKS WITH TARPAULINS
- REMOVING EXCESS DIRT FROM ROADS DAILY
- USING ROADWAY SWEEPERS DURING DUST GENERATING ACTIVITIES SUCH AS EXCAVATION.

2.C.3 STATE AND LOCATION REGULATIONS FOR WASTE DISPOSAL, SANITARY SEWER, OR SEPTIC TANK REGULATIONS

PERMITS WILL BE REQUIRED FROM SFWMD, EPA/FDEP (NPDES), FDEP, DOH AND LEE COUNTY.

2.C.4 FERTILIZERS AND PESTICIDES:

THE CONTRACTOR'S EROSION CONTROL PLAN SHALL INCLUDE SPILL CONTAINMENT, REPORTING, AND RESPONSES. THE PLAN SHALL SPECIFY WHAT MANAGEMENT PRACTICES AND CONTAINMENT METHODS WILL BE USED TO PREVENT POTENTIAL POLLUTANTS SUCH AS FUEL, LUBRICANTS, HERBICIDES, ETC. FROM SPILLING ONTO THE SOIL OR INTO THE SURFACE WATERS. IF A SPILL DOES OCCUR, OR IF CONTAMINATED SOIL OR GROUNDWATER IS ENCOUNTERED, CONTACT THE CITY OF FORT MYERS AT (239)321-7925.

2.C.5 TOXIC SUBSTANCES

IN THE SEDIMENT AND EROSION CONTROL PLAN, PROVIDE A LIST OF TOXIC SUBSTANCES THAT ARE LIKELY TO BE USED ON THE JOB AND A PLAN ADDRESSING THE GENERATION, APPLICATION, MIGRATION, STORAGE, AND DISPOSAL OF THESE SUBSTANCES.

3.0 MAINTENANCE

- THE RESPONSIBILITY FOR MAINTENANCE AND REPAIRS OF EROSION AND SEDIMENT CONTROL DEVICES AND REMOVAL OF EROSION AND SEDIMENT CONTROL DEVICES MUST BE TAKEN WHEN NOTICE OF TERMINATION IS MAILED.
- INSTALLATION, MAINTENANCE, REPAIR AND REMOVAL REQUIRED FOR THE CONTROL AND ABATEMENT OF EROSION AND WATER POLLUTION SHALL BE INCLUDED IN THE COSTS FOR THE EROSION CONTROL DEVICES ON THE PROJECT.
- ALL CONTROL MEASURES WILL BE MAINTAINED DAILY BY THE CONTRACTOR. ALL MEASURES WILL BE MAINTAINED IN GOOD WORKING ORDER. IF A REPAIR IS NECESSARY, IT WILL BE INITIATED WITHIN 24 HOURS OF NOTICE.
- SODDING WILL BE INSPECTED FOR BARE SPOTS, WASHOUTS, AND HEALTHY GROWTH. SYNTHETIC BALES SHALL BE MAINTAINED TO ENSURE THEIR USEFULNESS AND NOT BLOCK OR IMPEDE STORMWATER FLOW OR DRAINAGE. STABILIZED CONSTRUCTION ENTRANCES SHALL BE MAINTAINED TO PREVENT CLOGGING OF ROCK BEDDING WHICH MAY IMPEDE THE USEFULNESS OF THE STRUCTURE.

4.0 INSPECTIONS


- INSTALL AND MAINTAIN RAIN GAUGES ON THE PROJECT SITE AND RECORD WEEKLY RAINFALL IN ACCORDANCE WITH THE NPDES PERMIT. ALL CONTROL MEASURES WILL BE MAINTAINED DAILY BY THE CONTRACTOR.
- ALL EROSION AND WATER POLLUTION ABATEMENT AND CONTROL MEASURES WILL BE INSPECTED DAILY BY THE CONTRACTOR'S PERSONNEL WHO ARE F.D.E.P. CERTIFIED STORMWATER MANAGEMENT INSPECTORS.
- COMPLETE ALL SWPPP INSPECTION REPORT FORMS REQUIRED FOR THE NPDES PERMIT.
- A WEEKLY REPORT MUST BE SUBMITTED TO THE CITY OF FORT MYERS DOCUMENTING THE DAILY INSPECTIONS AND MAINTENANCE OR REPAIRS TO THE SEDIMENT CONTROL DEVICES. THE CONTRACTOR SHALL MAINTAIN ALL REQUIRED REPORTS AND COMPLETE ALL SWPPP INSPECTION FORMS.
- PREPARATION OF ALL THE CONTRACTOR'S REPORTS OF INSPECTION, SHALL BE INCLUDED IN THE INDIVIDUAL COSTS OF THE EROSION CONTROL DEVICES OR LUMP SUM COST OF THE PROJECT.
- THE CONTRACTOR SHALL USE THE FDOT CONSTRUCTION INSPECTION REPORT 650-040-03, FOR DAILY INSPECTIONS.

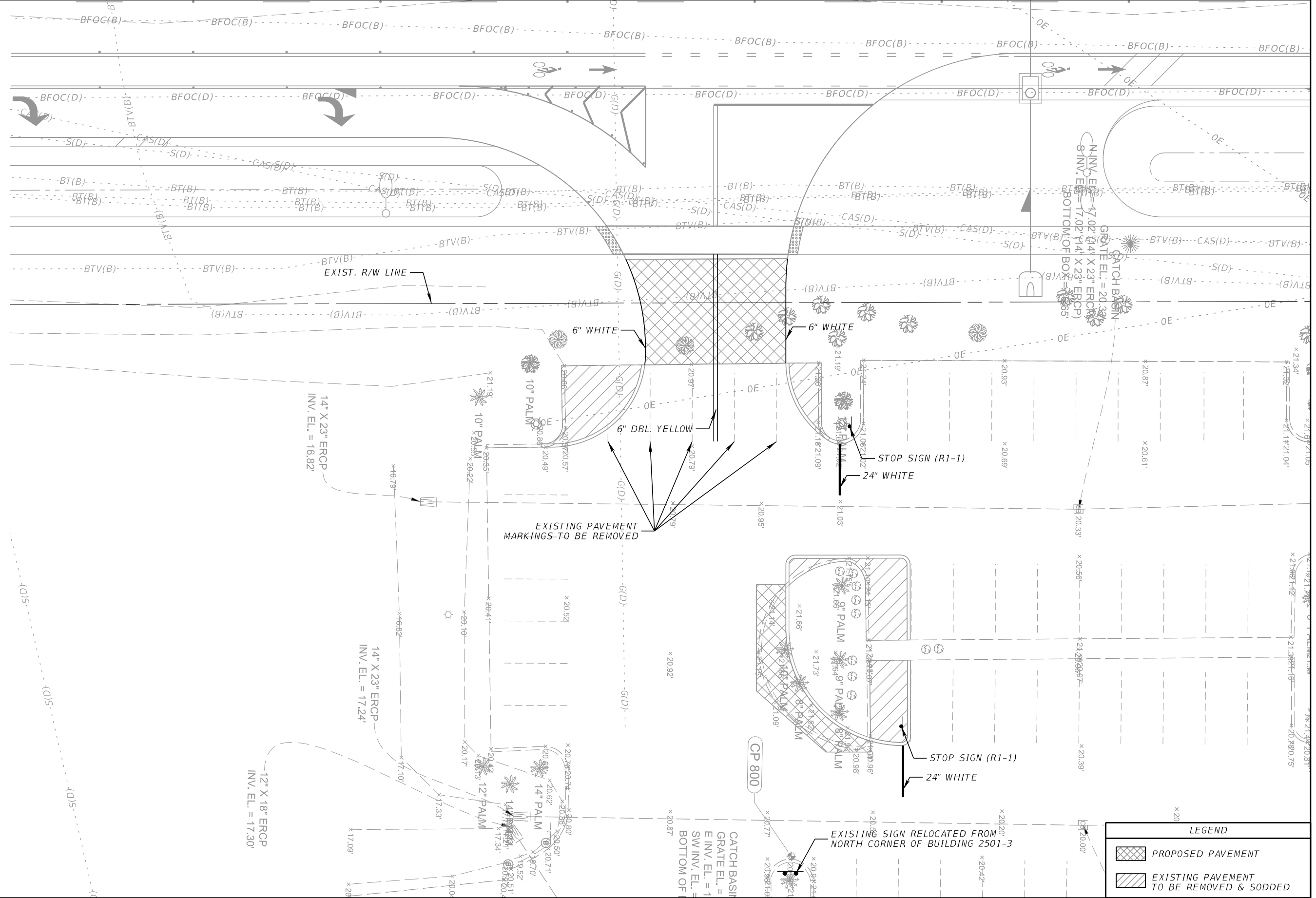
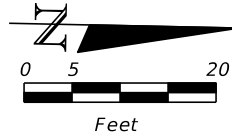
5.0 NON-STORMWATER DISCHARGES

IN THE SECTION 104 EROSION CONTROL PLAN, IDENTIFY ALL ANTICIPATED NON-STORMWATER DISCHARGES (EXCEPT FLOWS FROM FIRE FIGHTING ACTIVITIES) THE CONTRACTOR SHALL DESCRIBE THE PROPOSED MEASURES TO PREVENT POLLUTION OF THESE NON-STORMWATER DISCHARGES. IF THE CONTRACTOR ENCOUNTERS CONTAMINATED SOIL OR GROUNDWATER, THE CONTRACTOR SHALL NOTIFY THE ENGINEER AND THE CITY OF FORT MYERS.

6.0 TRACKING & REPORTING:

- (1) A WEEKLY REPORT MUST BE SUBMITTED TO THE CITY OF FORT MYERS DOCUMENTING THE DAILY INSPECTIONS & MAINTENANCE OR REPAIRS TO THE EROSION & SEDIMENT CONTROL DEVICES. THE CONTRACTOR SHALL MAINTAIN ALL REQUIRED REPORTS & COMPLETE ALL SWPPP INSPECTION FORMS.
- (2) PREPARATION OF ALL THE CONTRACTOR'S REPORTS OF INSPECTION, MAINTENANCE & REPAIRS REQUIRED FOR THE CONTROL & ABATEMENT OF EROSION & WATER POLLUTION, SHALL BE INCLUDED IN THE INDIVIDUAL COSTS OF THE EROSION & SEDIMENT CONTROL DEVICES.
- (3) USE THE SWPPP CONSTRUCTION INSPECTION REPORT FORM # 650-040-03, FOR WEEKLY INSPECTIONS OR FOR INSPECTION AFTER A RAINFALL EVENT OF 0.5 INCHES OR MORE.

REVISIONS				 13461 Parker Commons Blvd, Suite 104 Fort Myers, Florida 33912 Engineer of Record: Adrienne A. Wisdom & ASSOCIATES P.E. No.: 78492	CITY OF FORT MYERS			STORMWATER POLLUTION PREVENTION PLAN	SHEET NO.
DATE	DESCRIPTION	DATE	DESCRIPTION		ROAD	CITY	CONTRACT NO.		
					2501 ORTIZ AVE.	FORT MYERS	RFO 0024-20		9



LEGEND	
	PROPOSED PAVEMENT
	EXISTING PAVEMENT TO BE REMOVED & SODDED

REVISIONS			
DATE	DESCRIPTION	DATE	DESCRIPTION

KCA
KISINGER CAMPO & ASSOCIATES P.E. No.: 78492

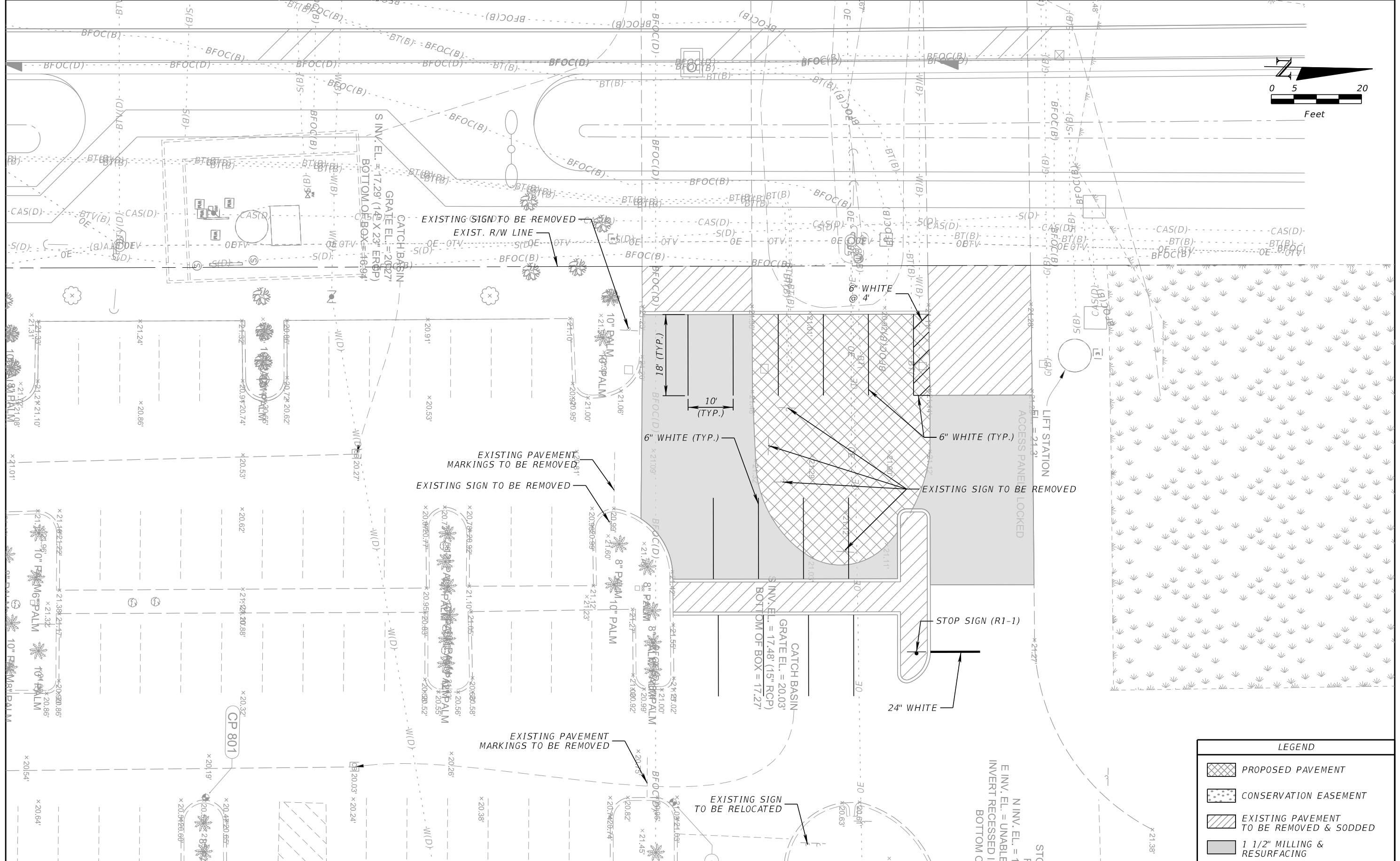
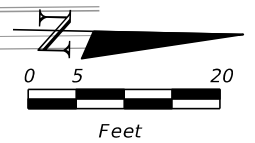
13461 Parker Commons Blvd, Suite 104
Fort Myers, Florida 33912
Engineer of Record: Adrienne A. Wisdom

CITY OF FORT MYERS		
ROAD	CITY	CONTRACT NO.
2501 ORTIZ AVE.	FORT MYERS	RFQ 0024-20

SIGNING AND PAVEMENT MARKINGS (1)

SHEET NO.	10
-----------	----

THE OFFICIAL RECORD OF THIS SHEET IS THE ELECTRONIC FILE DIGITALLY SIGNED AND SEALED UNDER RULE 61G15-23.004, F.A.C.



LEGEND	
	PROPOSED PAVEMENT
	CONSERVATION EASEMENT
	EXISTING PAVEMENT TO BE REMOVED & SODDED
	1 1/2" MILLING & RESURFACING

REVISIONS			
DATE	DESCRIPTION	DATE	DESCRIPTION

KCA
KISINGER CAMPO & ASSOCIATES P.E. No.: 78492

13461 Parker Commons Blvd, Suite 104
Fort Myers, Florida 33912
Engineer of Record: Adrienne A. Wisdom

CITY OF FORT MYERS		
ROAD	CITY	CONTRACT NO.
2501 ORTIZ AVE.	FORT MYERS	RFQ 0024-20

SIGNING AND PAVEMENT MARKINGS (2)


SHEET NO.	11
-----------	----

THE OFFICIAL RECORD OF THIS SHEET IS THE ELECTRONIC FILE DIGITALLY SIGNED AND SEALED UNDER RULE 61G15-23.004, F.A.C.

N INV. EL. = 17.48' (15" RCP)
BOTTOM OF BOX = 17.27'

TABULATION OF QUANTITIES

PAY ITEM NO.	DESCRIPTION	UNIT	SHEET NUMBER				TOTAL
			4	5	10	11	FINAL
			PLANS	PLANS	PLANS	PLANS	
101-1	MOBILIZATION	LS	-	-	-	-	1
102-1	MAINTENANCE OF TRAFFIC	LS	-	-	-	-	1
104-10-3	SEDIMENT BARRIER	LF	92	241			333
104-18	INLET PROTECTION SYSTEM	EA	2	2			4
107-1	LITTER REMOVAL AND DISPOSAL	AC	0.040	0.046			0.09
107-2	MOWING	AC	0.037	0.042			0.08
110-1-1	CLEARING & GRUBBING	AC	0.062	0.150			0.21
110-4-10	REMOVAL OF EXISTING CONCRETE	SY	9.5	0.1			10
120-6	EMBANKMENT	CY	55.28	7.14			62.4
160-4	TYPE B STABILIZATION	SY	134.8	214.1			349
285-703	OPTIONAL BASE GROUP 3	SY	111.1	214.1			325
327-70-6	MILLING EXISTING ASPHALT PAVEMENT, 1 1/2" AVG DEPTH	SY	-	289.2			289
334-1-12	SUPERPAVE ASPHALTIC CONCRETE, TRAFFIC B	TN	9.03	41.52			50.6
520-2-4	CONCRETE CURB, TYPE D	LF	166.4	241.0			407
570-1-2	PERFORMANCE TURF, SOD	SY	180.5	208.4			389
700-1-11	SINGLE POST SIGN, F&I GROUND MOUNT, UP TO 12 SF	AS			2	1	3
700-1-50	SINGLE POST SIGN, RELOCATE	AS				1	1
700-1-60	SINGLE POST SIGN, REMOVE	AS				6	6
711-11-125	THERMOPLASTIC, STANDARD, WHITE, SOLID, 24" FOR STOP LINE AND CROSSWALK	LF			22.0	11.0	33
711-16-101	THERMOPLASTIC, STANDARD-OTHER SURFACES, WHITE, SOLID, 6"	GM			0.0086	0.0527	0.061
711-16-201	THERMOPLASTIC, STANDARD-OTHER SURFACES, YELLOW, SOLID, 6"	GM			0.0152		0.015
711-17-1	THERMOPLASTIC, REMOVE EXISTING THERMOPLASTIC PAVEMENT MARKINGS- SURFACE TO REMAIN	SF			36.5	43.3	80

REVISIONS				 13461 Parker Commons Blvd, Suite 104 Fort Myers, Florida 33912 Engineer of Record: Adrienne A. Wisdom & ASSOCIATES P.E. No.: 78492	CITY OF FORT MYERS			SUMMARY OF QUANTITIES	SHEET NO.
DATE	DESCRIPTION	DATE	DESCRIPTION		ROAD	CITY	CONTRACT NO.		SQ-1
					2501 ORTIZ AVE.	FORT MYERS	RFO 0024-20		

THE OFFICIAL RECORD OF THIS SHEET IS THE ELECTRONIC FILE DIGITALLY SIGNED AND SEALED UNDER RULE 61G15-23.004, F.A.C.