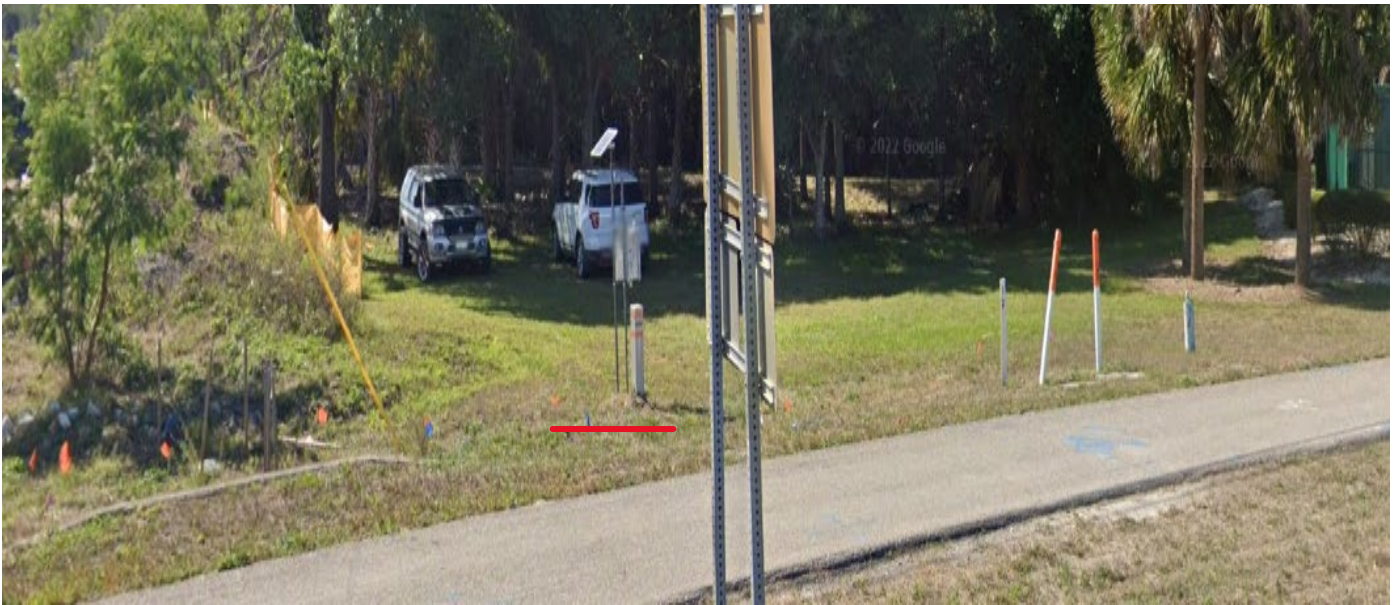




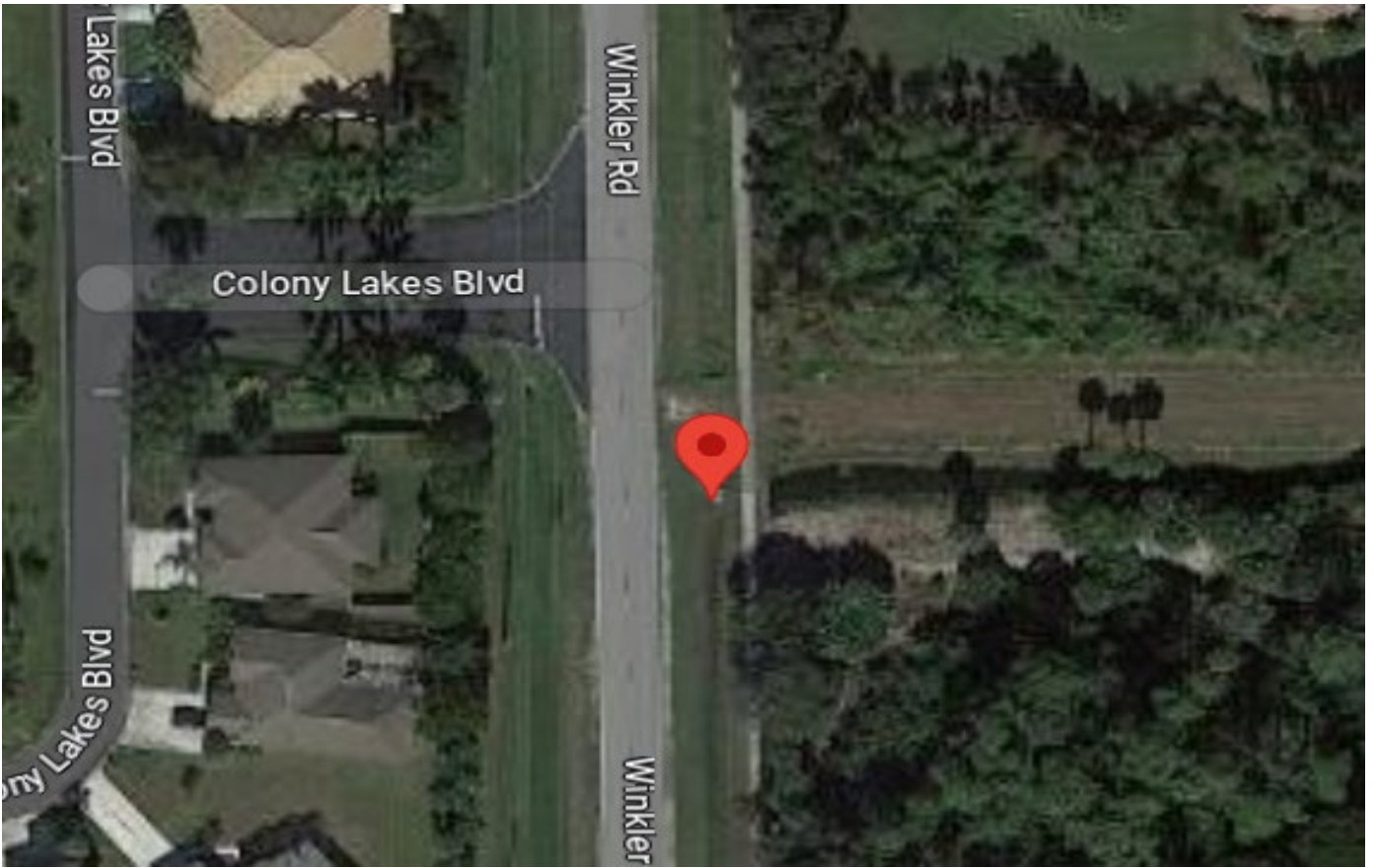
Stage Recorder Site Location

Deep Lagoon	Median of Summerlin Rd. Approximately 1 mile East of Pine Ridge near Lexington Middle School	26° 29'53.09"N 81° 55'13.20"W	26.49808	-81.920
-------------	---	----------------------------------	----------	---------



Monitoring Well Site Locations

46A-GW23 Six Mile Cypress	NW corner of Colonial Blvd & Ortiz Ave	26° 36' 47.621"N 81° 48' 41.91"W	26.61323	-81.81164
---------------------------	--	-------------------------------------	----------	-----------



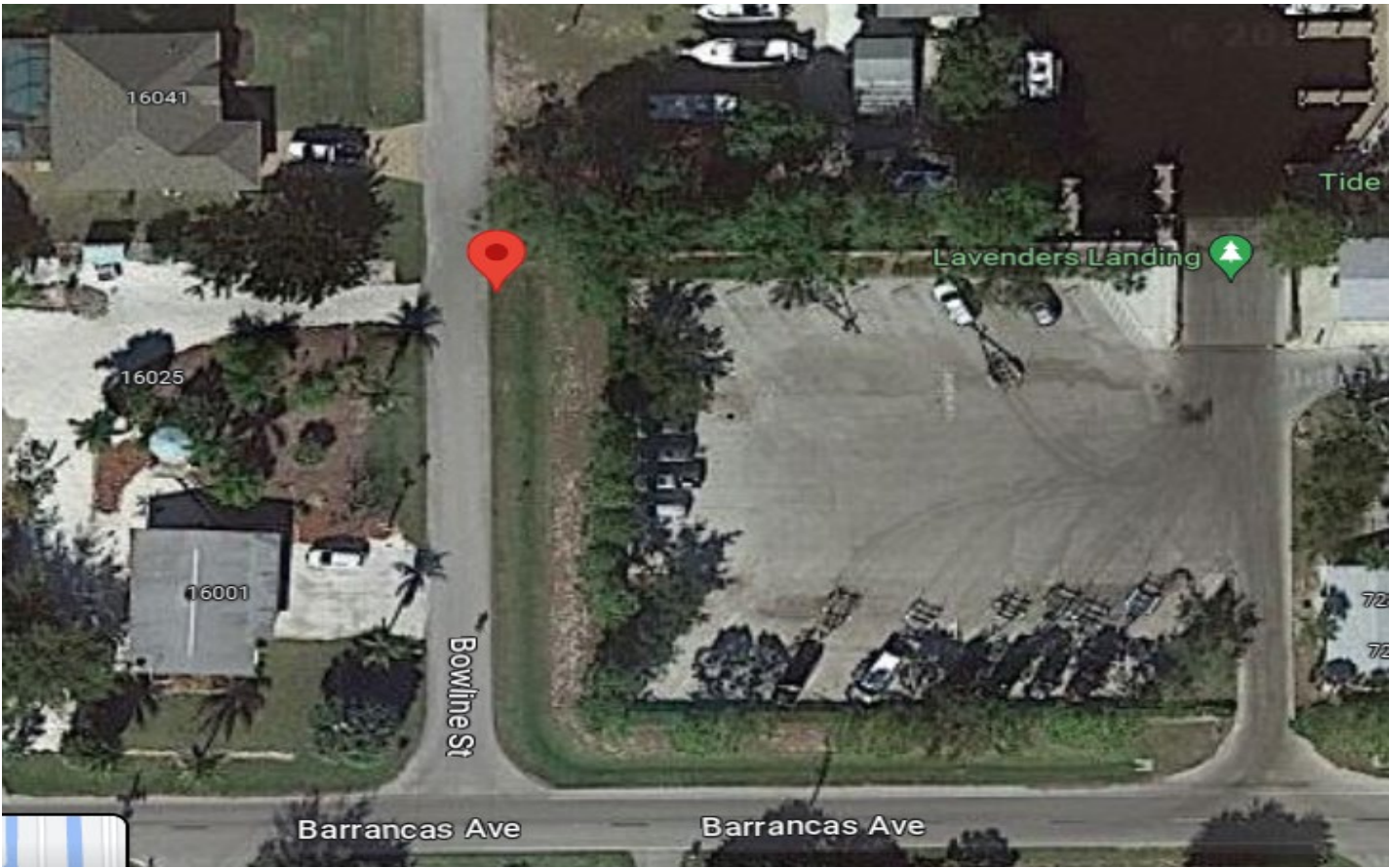
Monitoring Well Site Locations

44-GW1 Hendry Creek	SE corner Winkler Rd & Crown Arbor Way Across from Colony Lakes, E side of Winkler Rd	26° 29' 41.741"N 81° 53' 55.33"W	26.49493	-81.89870
------------------------	---	-------------------------------------	----------	-----------



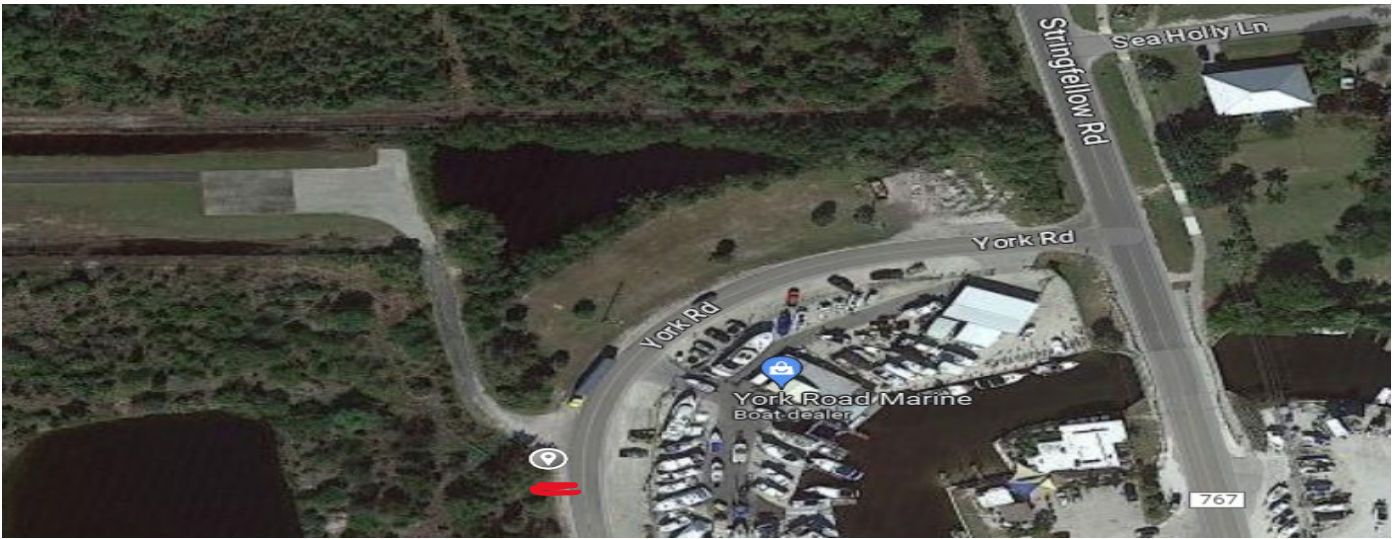
Monitoring Well Site Locations

43-GW6 Deep Lagoon	~0.25 mi N of Gladiolus Dr on A&W Blvd. On W side of A&W along canal easement ~150'	26° 31' 25.72"N 81° 55' 12.46"W	26.52381	-81.92013
43-GW5 Deep Lagoon	~0.25 mi N of Gladiolus Dr on A&W Blvd. On W side of A&W along canal easement ~150'	26° 31' 26.691"N 81° 55' 12.5"W	26.52380	-81.92014



Monitoring Well Site Locations

PI-GW1 Pine Island	~100' N of Barrancas Ave on Bowline St	26° 41' 39.401"N 82° 8' 47.529"W	26.69428	-82.14654
--------------------	--	-------------------------------------	----------	-----------



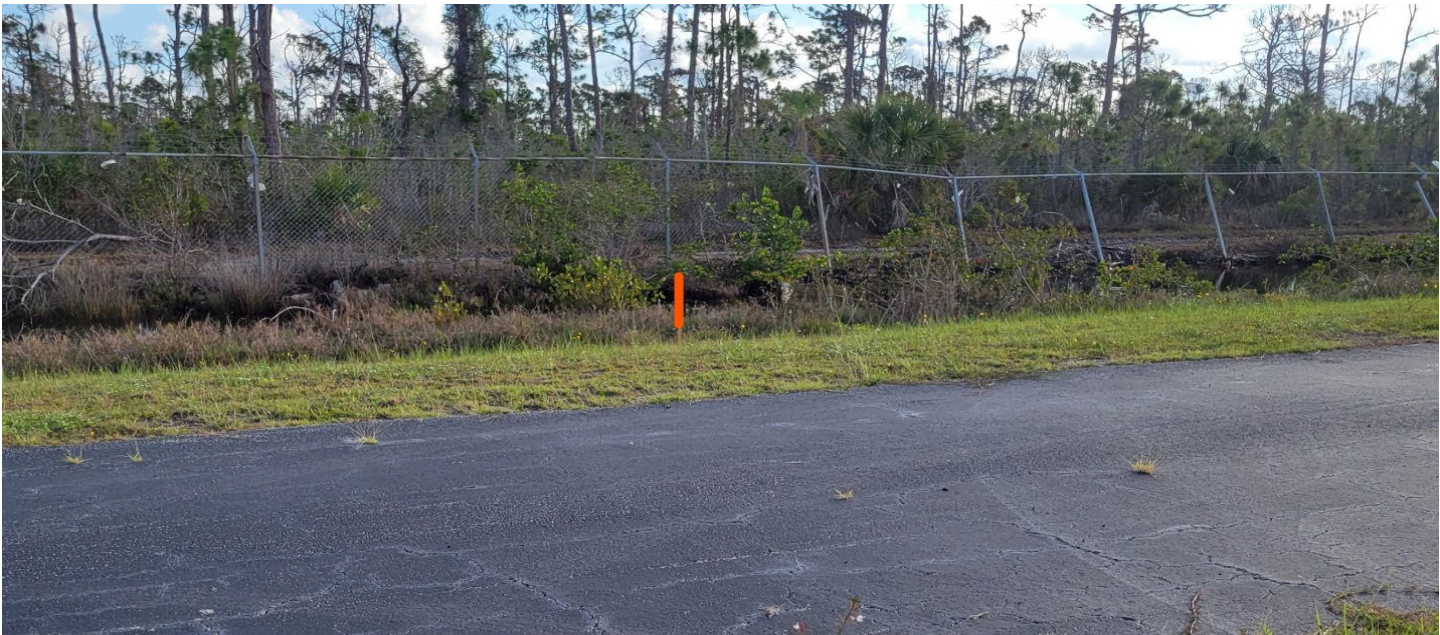
Monitoring Well Site Locations

PI-GW2 Pine Island	~450' W of Stringfellow Rd on York Rd.	26° 30' 35.978"N 82° 5' 4.109"W	26.50999	-82.08448
--------------------	--	------------------------------------	----------	-----------



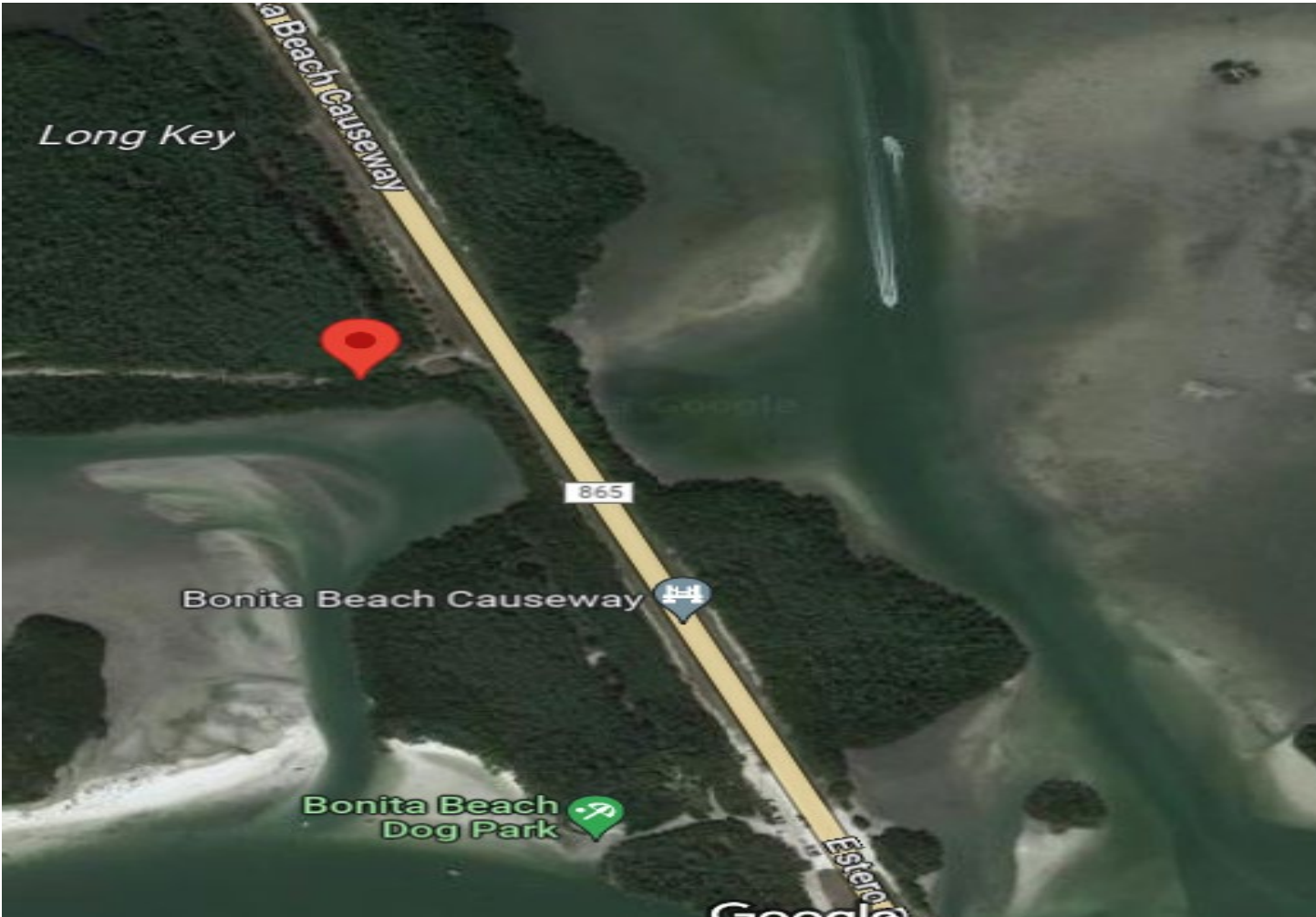
Monitoring Well Site Locations

45-GW5 Hendry Creek	~0.44 mi W of Island Park Rd along FPL easement	26° 29' 16.958"N 81° 51' 55.559"W	26.48804	-81.86543
---------------------	---	--------------------------------------	----------	-----------



Rain Gauge Site Locations

Saint James City	Mosquito control on St. James City off of York Rd.	26° 30'39.29"N 82° 5'7.88"W	26.51091	-82.08552
------------------	--	--------------------------------	----------	-----------



Rain Gauge Site Locations

Lovers Key	Lover's Key State Park	26° 23' 07.0"N 81°51' 54.0"W	26.38528	-81.86500
------------	------------------------	---------------------------------	----------	-----------



Rain Gauge Site Locations

Fort Myers Beach	Fort Myers Beach Plant, Pine Rd. Between Summerlin and San Carlos Blvd.	26° 29' 28.68"N 81° 56' 00.77"W	26.49130	-81.93355
------------------	---	------------------------------------	----------	-----------



Rain Gauge Site Locations

Gateway Water Plant	Gateway Service District East of Commerce Dr.	26° 34' 23.65"N 81° 44' 11.649"W	26.57324	-81.73657
---------------------	---	-------------------------------------	----------	-----------



Rain Gauge Site Locations

Bowman's Beach on Sanibel Island	At mosquito control off of Bowman's Beach Rd.	26° 27'46.42"N 82° 9'15.12"W	26.46289	-82.15420
----------------------------------	---	---------------------------------	----------	-----------