



LEHIGH ACRES PARK AND RIDE FACILITY - DUMPSTER ENCLOSURE

LEE COUNTY, FLORIDA

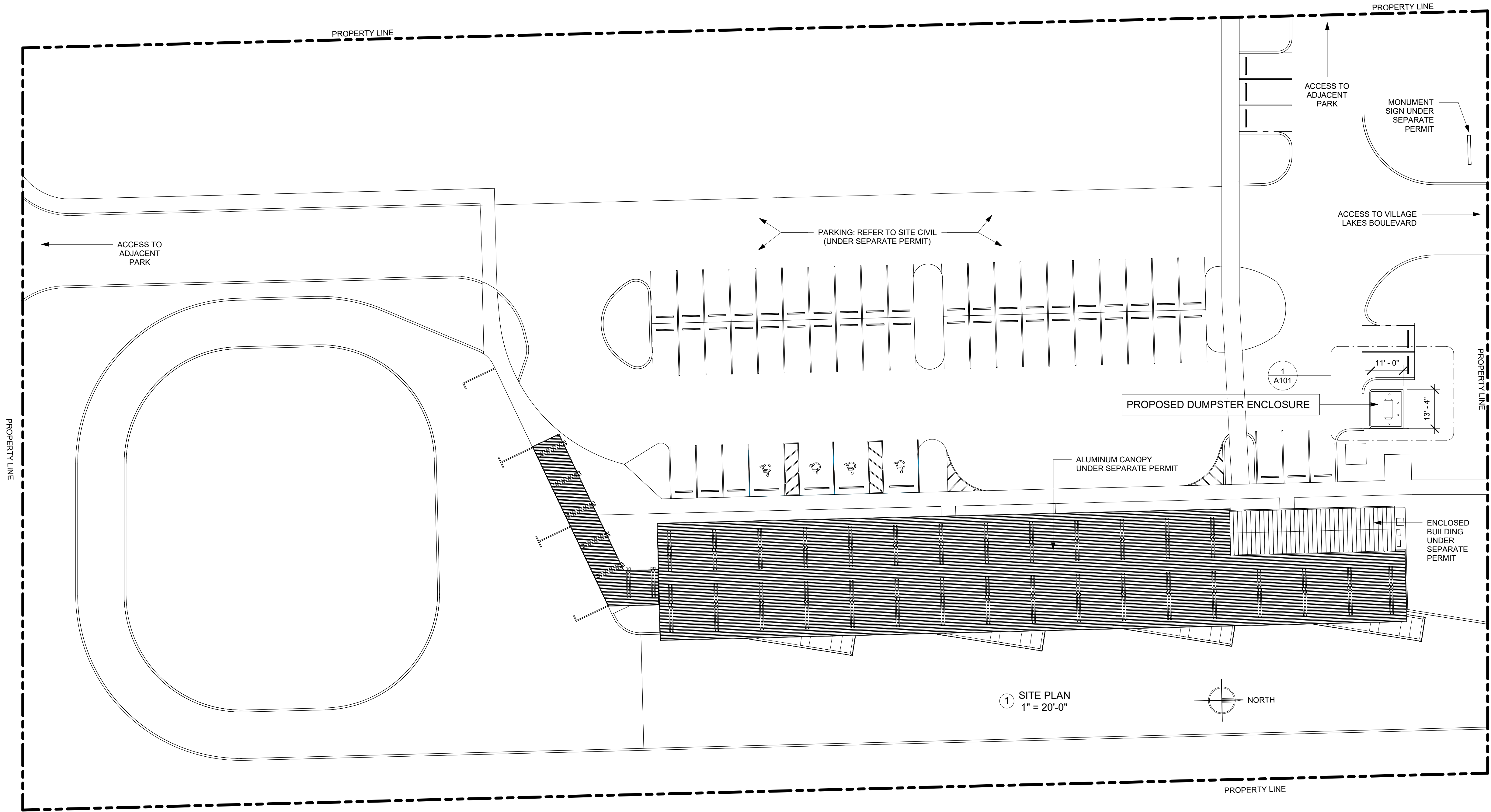
GENERAL NOTES:	
PROJECT DESCRIPTION:	DUMPSTER ENCLOSURE
PROJECT ZONING:	CFPD - COMMUNITY FACILITIES PLANNED DEVELOPMENT DISTRICT CF - COMMUNITY FACILITIES
PROJECT STRAP #:	30-44-27-09-0000A.001A
PROJECT ADDRESS:	1121 VILLAGE LAKES BLVD, LEHIGH ACRES, FLORIDA 33972

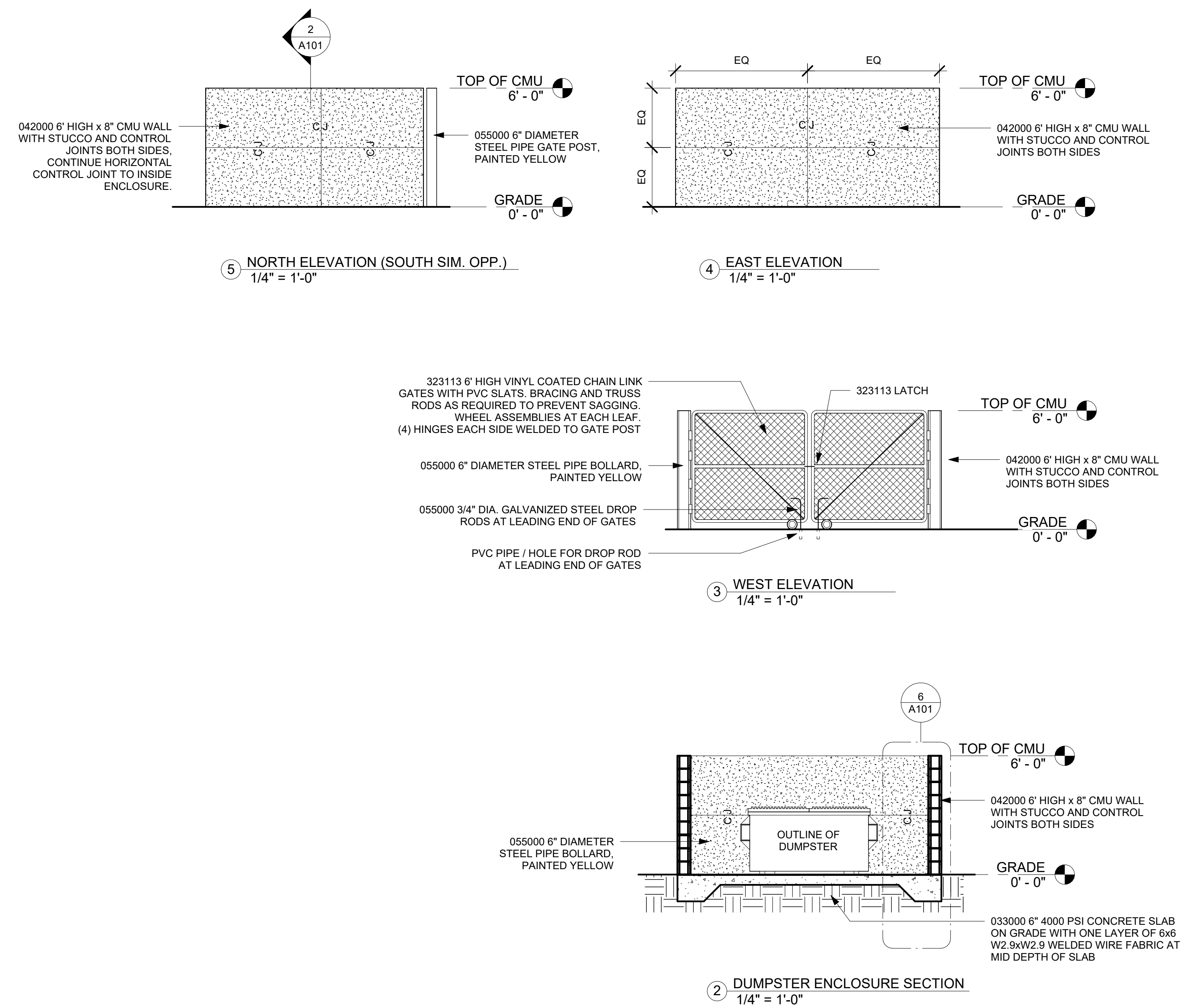
PROJECT LOCATION



SHEET INDEX

G001 SITE LOCATION, SITE PAN
A101 PLAN, ELEVATIONS, SECTIONS, DETAILS





055000 6" DIA. GATE PIPE, PAINTED YELLOW

PVC PIPE / HOLE FOR DROP ROD AT LEADING END OF GATES

FLUSH CONDITION AT CONCRETE APRON AND PAVEMENT

12'-0" MIN CLEAR WITH GATES OPEN

3231 13' 6" HIGH CHAIN LINK GATE WITH PVC SLATS. BRACING AND TRUSS RODS AS REQUIRED TO PREVENT SAGGING. WHEEL ASSEMBLIES AT EACH LEAF. (4) HINGES EACH SIDE WELDED TO GATE POST

PVC PIPE SET IN CONCRETE FOR DROP ROD AT LEADING END OF GATES

055000 6" DIA. GATE PIPE, PAINTED YELLOW

033000 CRACK CONTROL JOINT IN SLAB: 1/8" WIDE x 1-1/2" DEEP SAWCUT WITHIN 4 HOURS OF CONCRETE PLACEMENT

11'-0"

4'-0"

5"

1'-0"

1'-0"

1'-0"

1'-0"

13'-4"

4'-0"

4'-0"

4'-0"

042000 6" HIGH x 8" CMU WALL WITH STUCCO AND CONTROL JOINTS BOTH SIDES

055000 6" DIAMETER STEEL PIPE BOLLARDS PAINTED YELLOW, TYP OF (4)

OUTLINE OF DUMPSTER

SLOPE 3/16" PER FOOT MAX

120°

120°

C J

A101 5

2 A101

A101 3

A101 4

1 DUMPSTER ENCLOSURE FLOOR PLAN

1/4" = 1'-0"