



LEHIGH ACRES PARK AND RIDE FACILITY - MONUMENT SIGN

LEE COUNTY, FLORIDA

GENERAL NOTES:

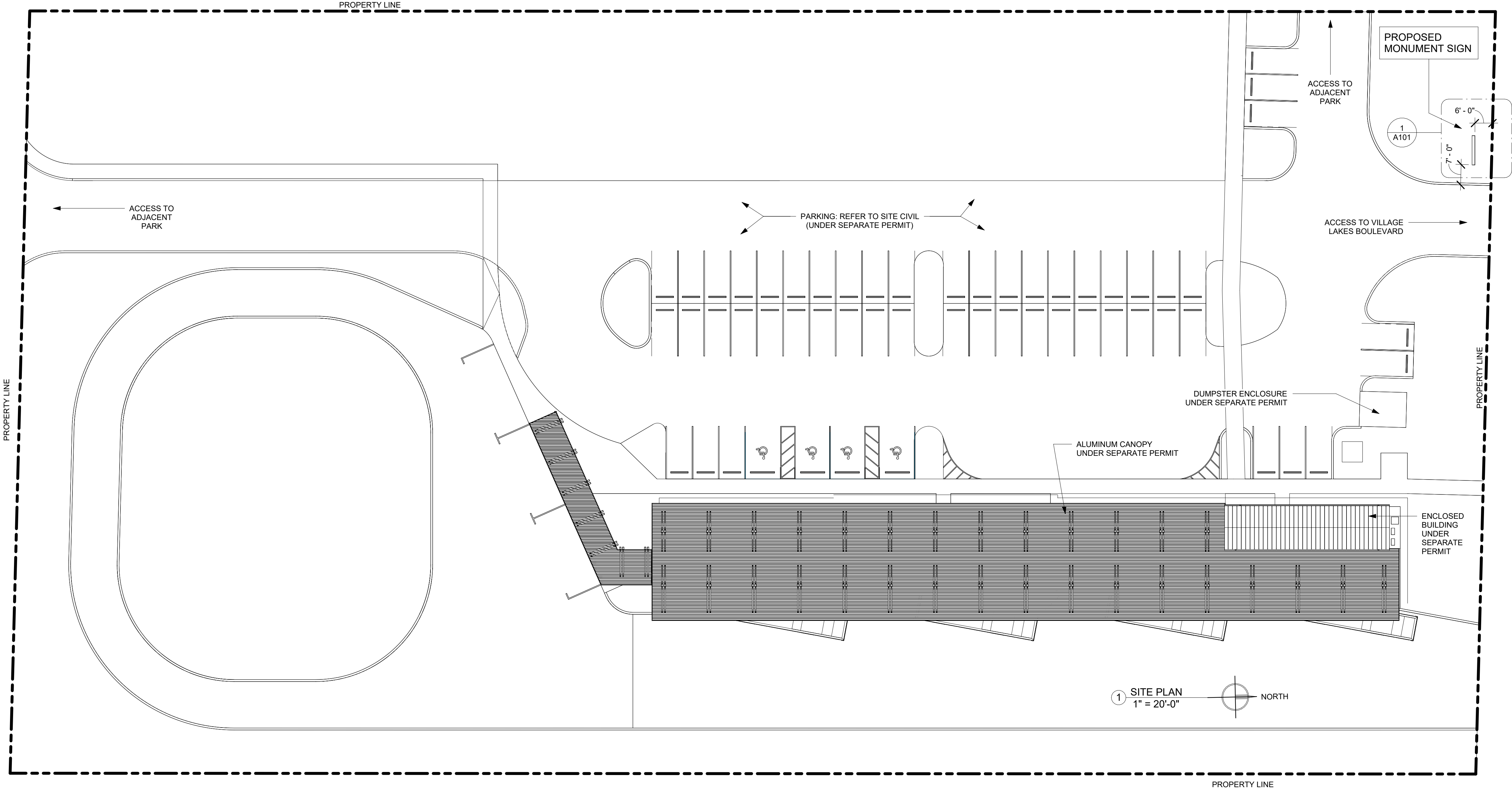
PROJECT DESCRIPTION:	MONUMENT SIGN
PROJECT ZONING:	CFPD - COMMUNITY FACILITIES PLANNED DEVELOPMENT DISTRICT CF - COMMUNITY FACILITIES
PROJECT STRAP #:	30-44-27-09-0000A.001A
PROJECT ADDRESS:	1121 VILLAGE LAKES BLVD, LEHIGH ACRES, FLORIDA 33972

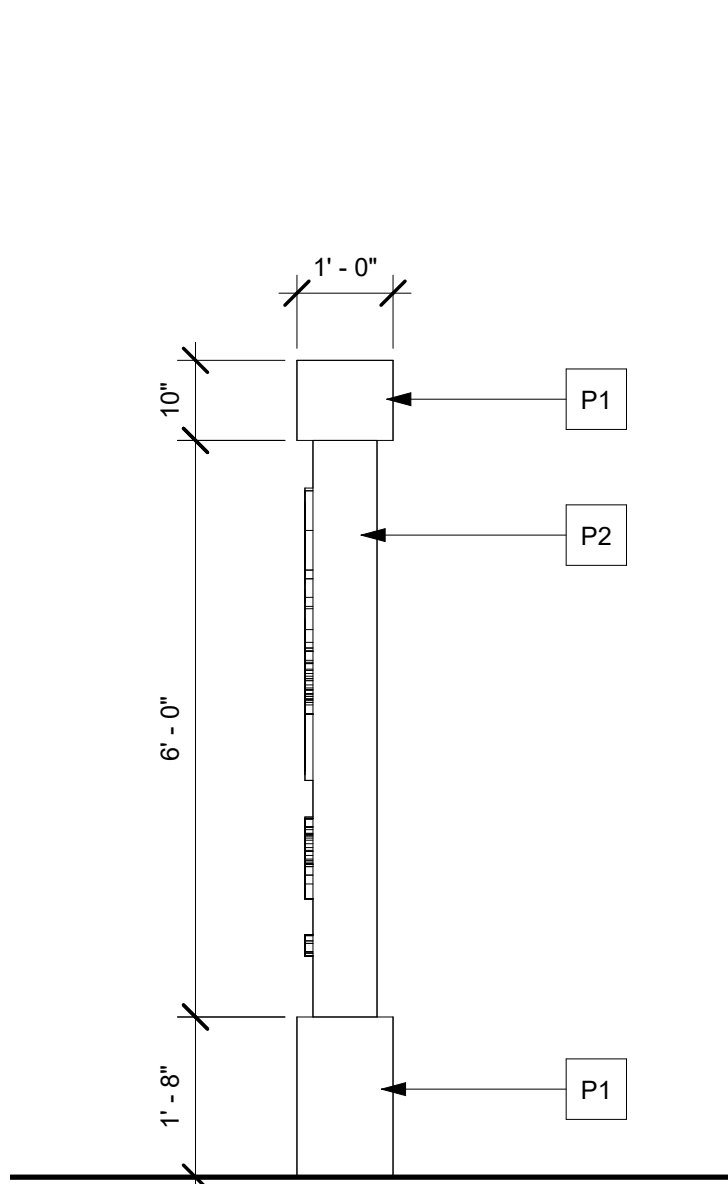
PROJECT LOCATION



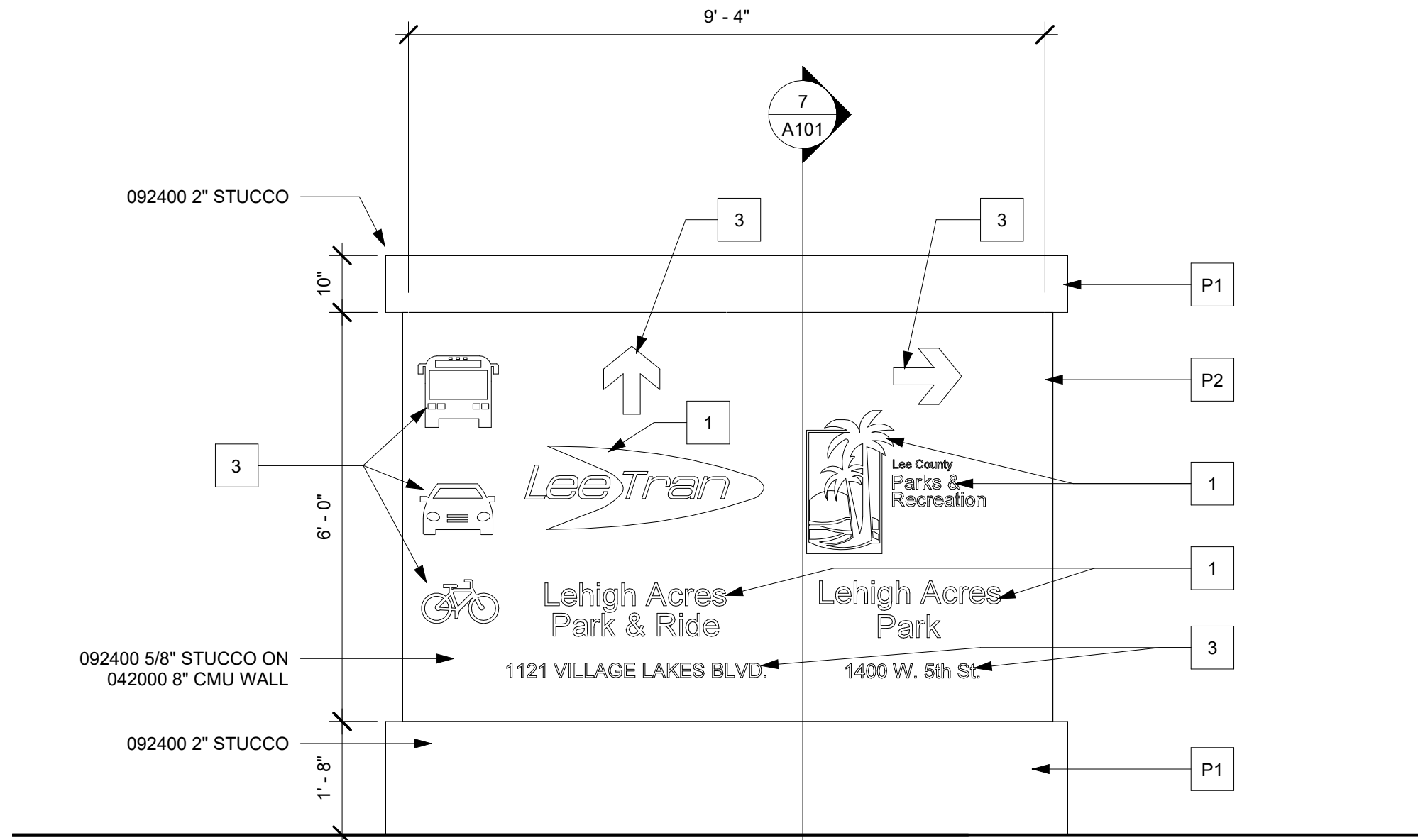
SHEET INDEX

G001 SITE LOCATION, SITE PAN
A101 PLAN, ELEVATIONS, SECTIONS, DETAILS

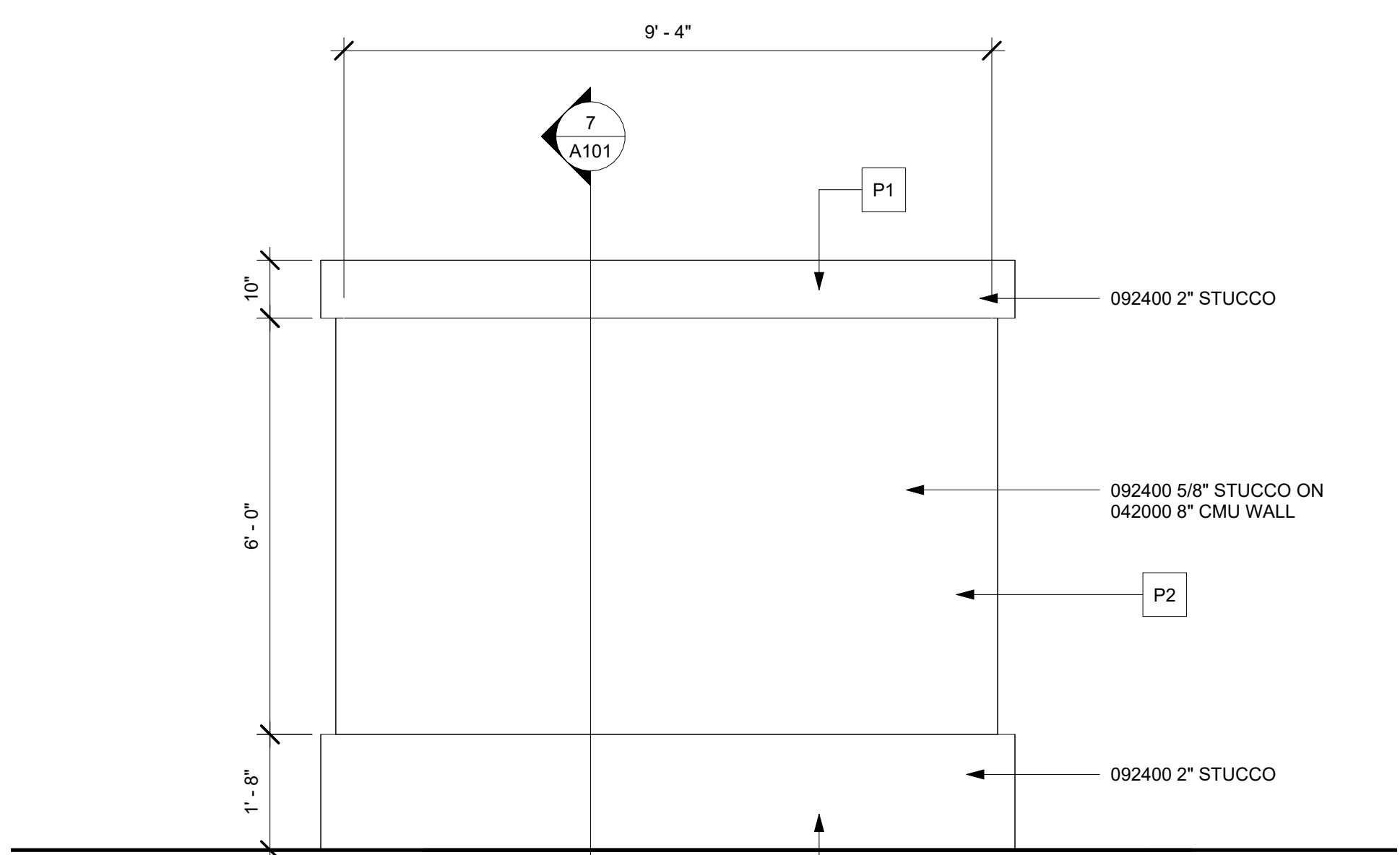




2 WEST ELEVATION (EAST SIM.)
1/2" = 1'-0"



3 NORTH ELEVATION
1/2" = 1'-0"



4 SOUTH ELEVATION
1/2" = 1'-0"

VERIFY ALL SIGN GRAPHICS WITH
OWNER PRIOR TO FABRICATION

ELEVATION CALLOUTS

- | | |
|----|----------------------|
| 1 | BLUE ACRYLIC |
| P1 | BLUE PAINTED STUCCO |
| P2 | WHITE PAINTED STUCCO |
| 3 | BLACK ACRYLIC |

GENERAL NOTES AND DESIGN CRITERIA

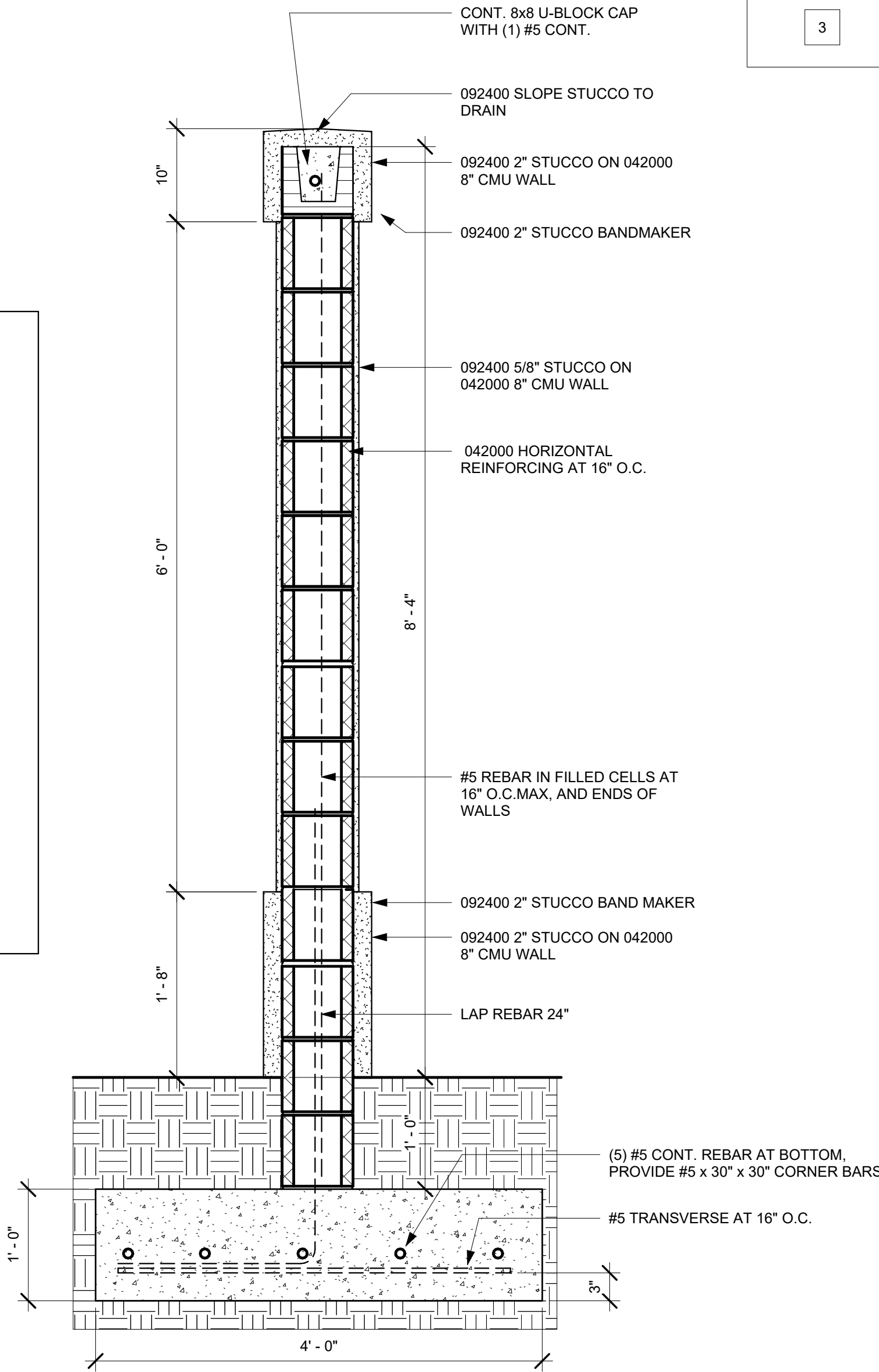
STRUCTURAL DESIGN IS IN ACCORDANCE WITH THE 2020 FLORIDA BUILDING CODE, 7TH EDITION. THE FOLLOWING DESIGN CRITERIA APPLIES:

- WIND LOADS (F.B.C. SECTION 1609, ASCE 7-16):
- ULTIMATE DESIGN WIND SPEED = 160 MPH
- NOMINAL DESIGN WIND SPEED = 124 MPH
- BUILDING RISK CATEGORY = II
- WIND EXPOSURE = CATEGORY C
- ENCLOSURE CLASSIFICATION = OPEN
- INTERNAL PRESSURE COEFFICIENTS = 0
- NOMINAL COMPONENT & CLADDING WALL PRESSURES: SEE +/-58 PSF

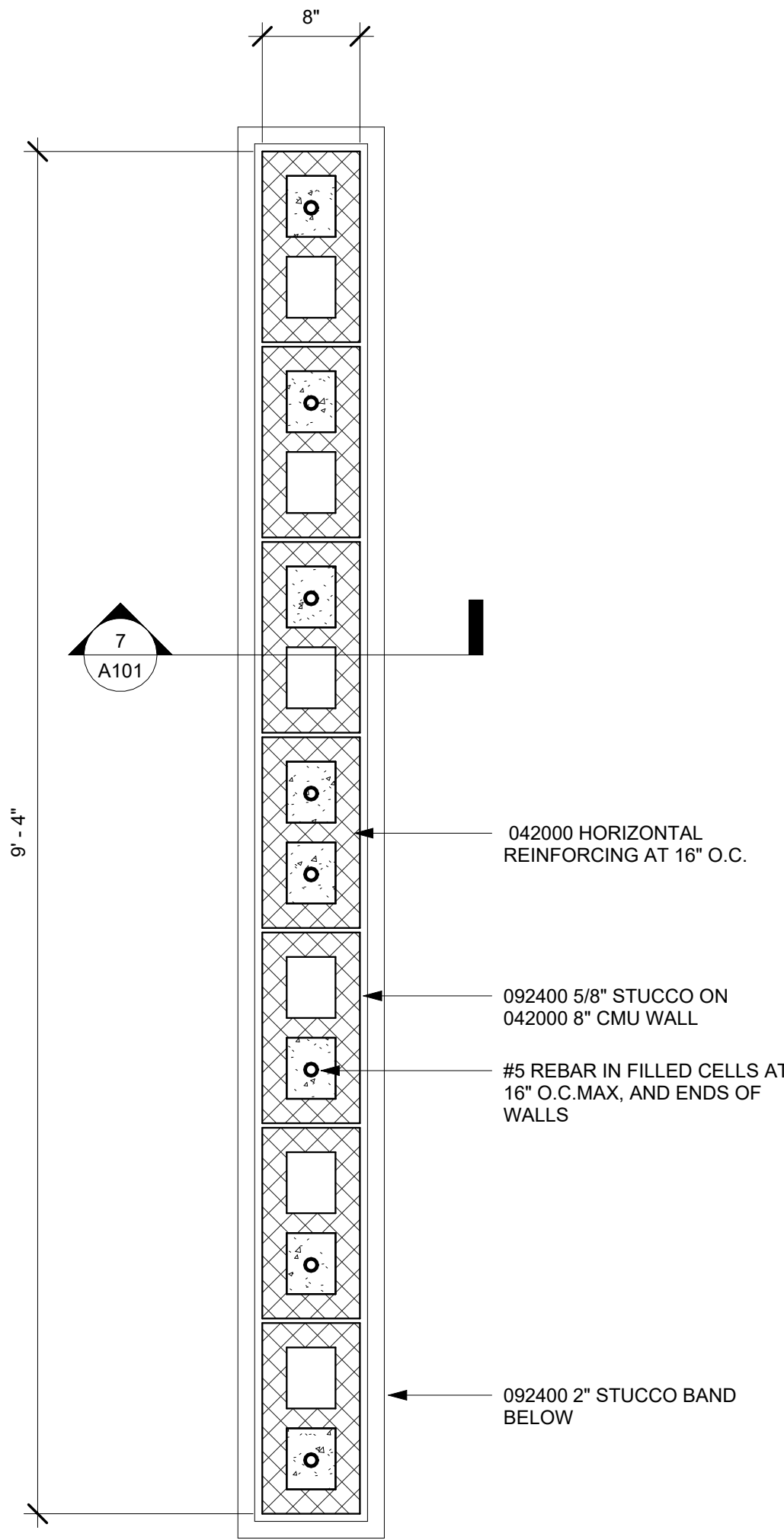
THE STRUCTURE IS DESIGNED FOR THE CONDITION OF THE BUILDING IN A COMPLETED STATE. THE CONTRACTOR SHALL BE RESPONSIBLE FOR PROVIDING TEMPORARY BRACING, GUYING, SHORING, SHEETING, TIEDOWNS OR OTHER MEANS AS REQUIRED TO AVOID EXCESSIVE STRESSES, MAINTAIN THE STABILITY OF THE STRUCTURE, AND SAFEGUARD THE WELFARE OF PERSONNEL DURING CONSTRUCTION. THE STRUCTURAL ENGINEER SHALL NOT HAVE CONTROL OR BE RESPONSIBLE FOR CONSTRUCTION MEANS, METHODS, TECHNIQUES, PROCEDURES OR SEQUENCES, FOR THE ACTS OR OMISSIONS OF THE CONTRACTOR, OR ANY OTHER PERSONS PERFORMING THE WORK, OR FOR THE FAILURE OF ANY ENTITY TO CARRY OUT THE WORK IN ACCORDANCE WITH THE CONSTRUCTION DOCUMENTS.

THE CONTRACTOR SHALL VERIFY ALL EXISTING DIMENSIONS AND CONDITIONS OF EXISTING STRUCTURE, SITE AND UTILITIES THAT ARE AFFECTED BY NEW WORK. CONTRACTOR VERIFICATION SHALL INCLUDE, BUT NOT BE LIMITED TO, MEMBER SIZES, ELEVATIONS, CONNECTIONS, MATERIALS AND DETAILS. CONTRACTOR SHALL IMMEDIATELY NOTIFY ENGINEER OF ANY DISCREPANCIES OR CONFLICTS, PRIOR TO PROCEEDING WITH FABRICATION OR CONSTRUCTION.

- REINFORCING STEEL SHALL BE PLAIN DEFORMED BARS ASTM A615, GR. 60
- CONCRETE PER CURRENT EDITION OF ACI 318 f'c=3,000 PSI
- CONCRETE MASONRY PER CURRENT EDITION OF ACI 530 f'm=2,000 PSI
- FOUNDATION DESIGN: PRESUMED BEARING PRESSURE 2,500 PSF
- VERIFY THE ABOVE BY MEANS OF A SUBSURFACE INVESTIGATION, FIELD TESTS AND CERTIFIED LABORATORY TESTS.



7 SECTION
1" = 1'-0"



1 MONUMENT SIGN PLAN
1" = 1'-0"