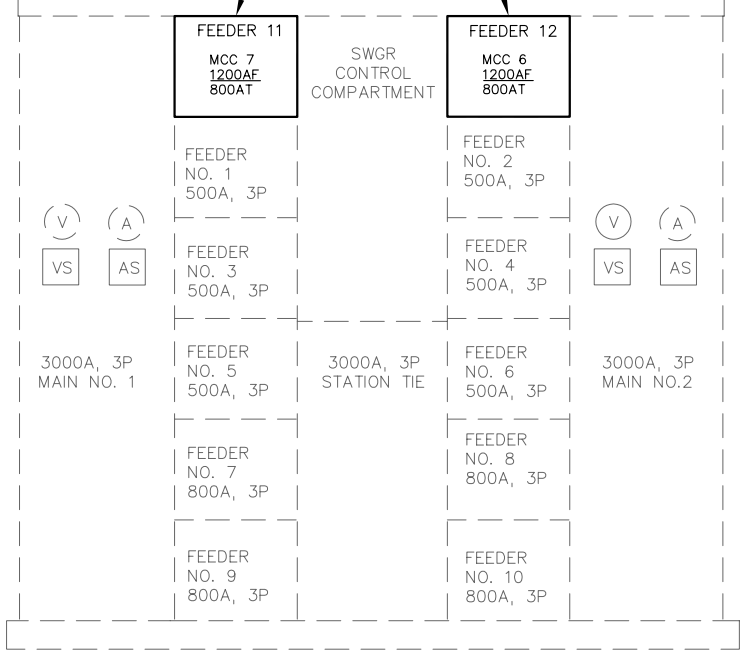


MCC-6 and MCC-7
will remain as is,
no cable needs to
be run to them.

MODIFICATION TO EXISTING SINGLE LINE POWER DIAGRAM



SWGR FRONT VIEW PROPOSED

DWG: X:\Projects\154 (Lee County)\100 (R. Myers Beach WTP Filter Replacement)\CAD\Plan set\Electrical\Addenda #3\A E200.dwg
 DATE: Sep 21, 2005 2:04pm USER: roy

SCALE: NONE	
DATE: 05/05	
DRAWN: TMP	
DESIGN: DHW	9/01/05 ADDENDA #3 TMP
CHECK: DHW	7/25/05 ADDENDA #1 AK
APPROVED: DHW	DATE REMARKS DRAWN

**LEE COUNTY UTILITIES
ENGINEERING**

1500 Monroe St. Fort Myers, Florida 33901
Ph. (239) 479-8181 Fax. (239) 479-8176

4415 Metro Parkway, Suite 404
Fort Myers, Florida 33916 (239) 278-7996
FL Engineering Business No. EB-2005

Electrical, Instrumentation & Control Design
15400 Shamrock Dr. Fort Myers, FL 33912

DON WILLIAMS P.E.
PE #29504 Certificate of Authorization #8212

**WASTEWATER TREATMENT PLANT
FILTER REPLACEMENT**

**MODIFICATIONS TO EXISTING
ELECTRICAL SERVICE SINGLE LINE**

SHEET:

E-200

066 OF 075