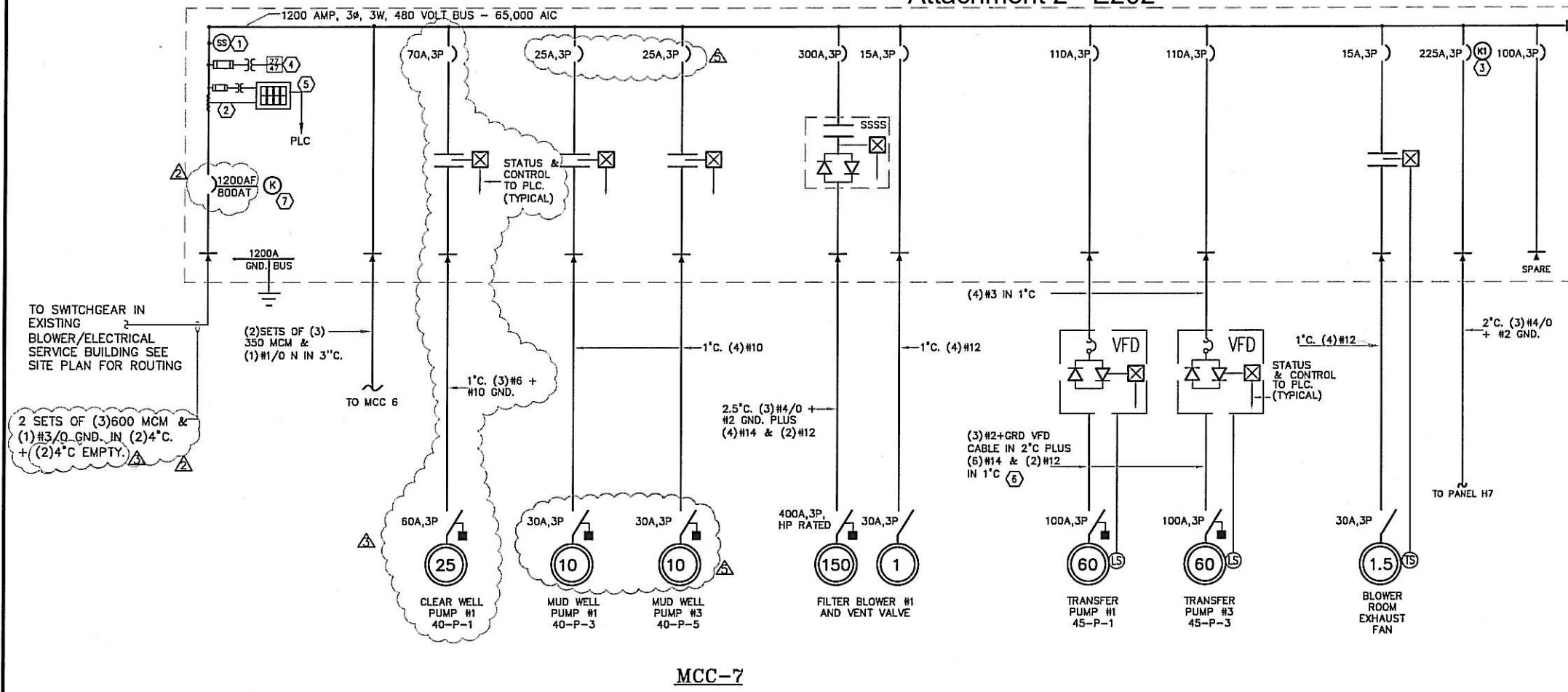


Attachment 2 - E202



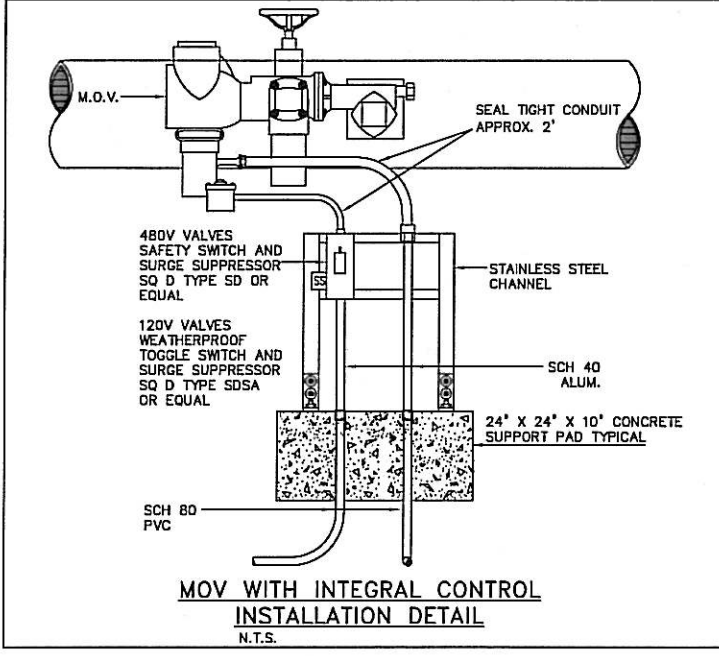
PROVIDE FOR FUTURE MCC SECTIONS WITH BUS STUB

PANEL: LP6A		BUS: 100A; 100A MCB		VOLTAGE: 208/120V, 3P, 4W	
MOUNTING: SURFACE		POLES: 30 WITH INTEGRAL SURGE SUPPRESSION			
LOCATION: ELECTRICAL ROOM		NEMA 1 ENCLOSURE			
CIR. NO.	DESCRIPTION	TRIP	POLES	REMARKS	
1	ANALYZER ROOM LIGHTING	20	1		
2	ANALYZER ROOM RECEPT	20	1		
3	TURBIDITY SAMPLER	20	1		
4	TURBIDITY ANALYZER	20	1		
5	FLOWMETER INDICATOR	20	1		
6	PH ANALYZER	20	1		
7, 9, 10	FILTER LOCAL CONTROL PNLS	20	1		
8	CL2 ANALYZER	20	1		
11	MDV'S	20	1		
12	MDV'S	20	1		
13	MDV'S	20	1		
14	MDV'S	20	1		
15	MDV'S	20	1		
16	MDV'S	20	1		
17	MDV'S	20	1		
18	MDV'S	20	1		
19	MDV'S	20	1		
20	MDV'S	20	1		
21	MDV'S	20	1		
22	MDV'S	20	1		
23, 24	SPARES	20	1		
25, 26, 27	SPARES	20	1		
28, 29, 30	SPARES	20	1		
**	INTEGRAL SURGE SUPPRESSION				

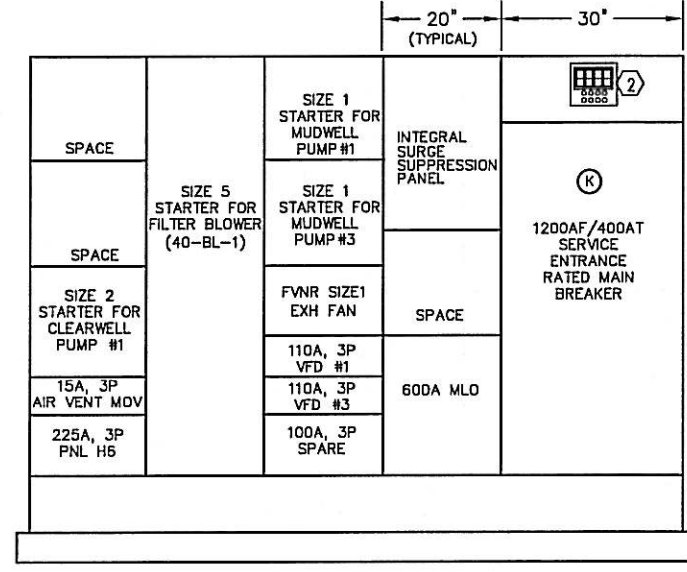
TO SWITCHGEAR IN EXISTING BLOWER/ELECTRICAL SERVICE BUILDING SEE SITE PLAN FOR ROUTING

2 SETS OF (3) 600 MCM & (1) #3/0 GND. IN (2) 4" C. + (2) 4" C. EMPTY.

MCC-7



- KEYNOTES:**
- INTEGRAL SURGE SUPPRESSION PANEL WITH BUS STAB-IN CONNECTION; RATED FOR 200,000 AMPS PER PHASE SINGLE PULSE SURGE CURRENT; 100,000 AMPS PER MODULE; 277/480V 3PH-4W. PROVIDE UNIT WITH EM/RFI FILTER, SURGE COUNTER, INTEGRAL FUSED DISCONNECT, AND PILOT LIGHT STATUS MONITOR. UNIT RATED 1000V UL1449 LINE TO GROUND; 2000V LINE TO LINE. CURRENT TECHNOLOGY C-GUARD OR EQUAL BY MCC MANUFACTURER.
 - PROPOSED MCC INTEGRAL DIGITAL METERING.
 - KIRKKEY INTERLOCKED FEEDER BREAKER, KEY K1 IS REQUIRED TO BE INSERTED TO CLOSE BREAKER.
 - PHASE SEQUENCE, IMBALANCE VOLTAGE RELAY & 3PHASE UNDERVOLTAGE RELAY. PROVIDE MULTIPOLE RELAY; FACTORY WIRED INTO ALL STARTER CONTROL CIRCUITS WITHIN MCC. PROVIDE CONTACT TO PLC. PROVIDE FRONT PANEL INDICATOR LIGHT ("3-PHASE VOLTAGE FAULT").
 - 5 CONDUCTOR #14 CONTROL CABLE IN 1" C.
 - VERIFY VFD CONDUIT SIZE WITH CABLE MANUFACTURER.
 - KIRKKEY INTERLOCK MAIN BREAKER WITH MCC6 MAIN/TIE. KEY IS REQUIRED TO BE INSERTED TO CLOSE BREAKER.



MCC-7 FRONT VIEW

PANEL: LP6B		BUS: 100A; 100A MCB		VOLTAGE: 208/120V, 3P, 4W	
MOUNTING: SURFACE		POLES: 30 WITH INTEGRAL SURGE SUPPRESSION			
LOCATION: ELECTRICAL ROOM		NEMA 1 ENCLOSURE			
CIR. NO.	DESCRIPTION	TRIP	POLES	REMARKS	
1, 3, 5	MDV'S (FCV-4A, FCV-4B, FCV-4C)	20	1		
2, 4, 6	MDV'S (FCV-4E, FCV-4F, FCV-4G)	20	1		
7, 9, 11	MDV'S (FCV-4H, FCV-5A, FCV-5B)	20	1		
8, 10, 12	MDV'S (FCV-5C, FCV-5E, FCV-5F)	20	1		
13, 15, 17	MDV'S (FCV-5G, FCV-5H, FCV-6A)	20	1		
14, 16, 18	MDV'S (FCV-6B, FCV-6C, FCV-6E)	20	1		
19, 21	MDV'S (FCV-6F, FCV-6G)	20	1		
20	MDV'S (FCV-6H)	20	1		
22, 24, 26	MDV'S	20	1		
23, 25, 27	MDV'S	20	1		
28, 30	MDV'S	20	1		
29	MDV'S	20	1		
31, 33, 35	SPARES	20	1		
32, 34, 36	SPARES	20	1		
**	INTEGRAL SURGE SUPPRESSION				

** PROVIDE PANELBOARDS WITH INTEGRAL SURGE SUPPRESSION MODULES EQUAL TO CUTLER HAMMER CLIPPER SYSTEM MOD#CPS-S3 RATED 200KA PER PHASE; 100KA L-L, L-G. MIL SPEC FILTER; DIRECT BUS BAR CONNECTION, 10YR WARRANTY

DATE: 05/05
 DRAWN: TMP
 DESIGN: DHW
 CHECK: DHW
 APPROVED: DHW
 3/28/06
 2/15/06
 9/21/05
 9/01/05
 7/25/05
 7/5/05
 ASBULTS
 Shop Drg Coord
 COORDINATION
 ADDENDA #3
 ADDENDA #2
 ADDENDA #1
 DW
 DW
 TMP
 TMP
 AK
 AK
 DRAWN

LEE COUNTY UTILITIES ENGINEERING
 1500 Monroe St. Fort Myers, Florida 33901
 Ph. (239) 479-8181 Fax. (239) 479-8176

LEE COUNTY SOUTHWEST FLORIDA

BOYLE ENGINEERING CORPORATION
 4415 Metro Parkway, Suite 404
 Fort Myers, Florida 33916
 FL Engineering Business No. EB-2005

RKS Consulting Engineers
 Electrical, Instrumentation & Control Design
 15400 Shamrock Dr. Fort Myers, FL 33912
 DON WILLIAMS P.E.
 PE #29504 Certificate of Authorization #8212

WASTEWATER TREATMENT PLANT FILTER REPLACEMENT
PROPOSED FILTER ELECTRICAL SERVICE SINGLE LINE & MCC-7 ELEVATIONS

SHEET:
E-202
 068 OF 075