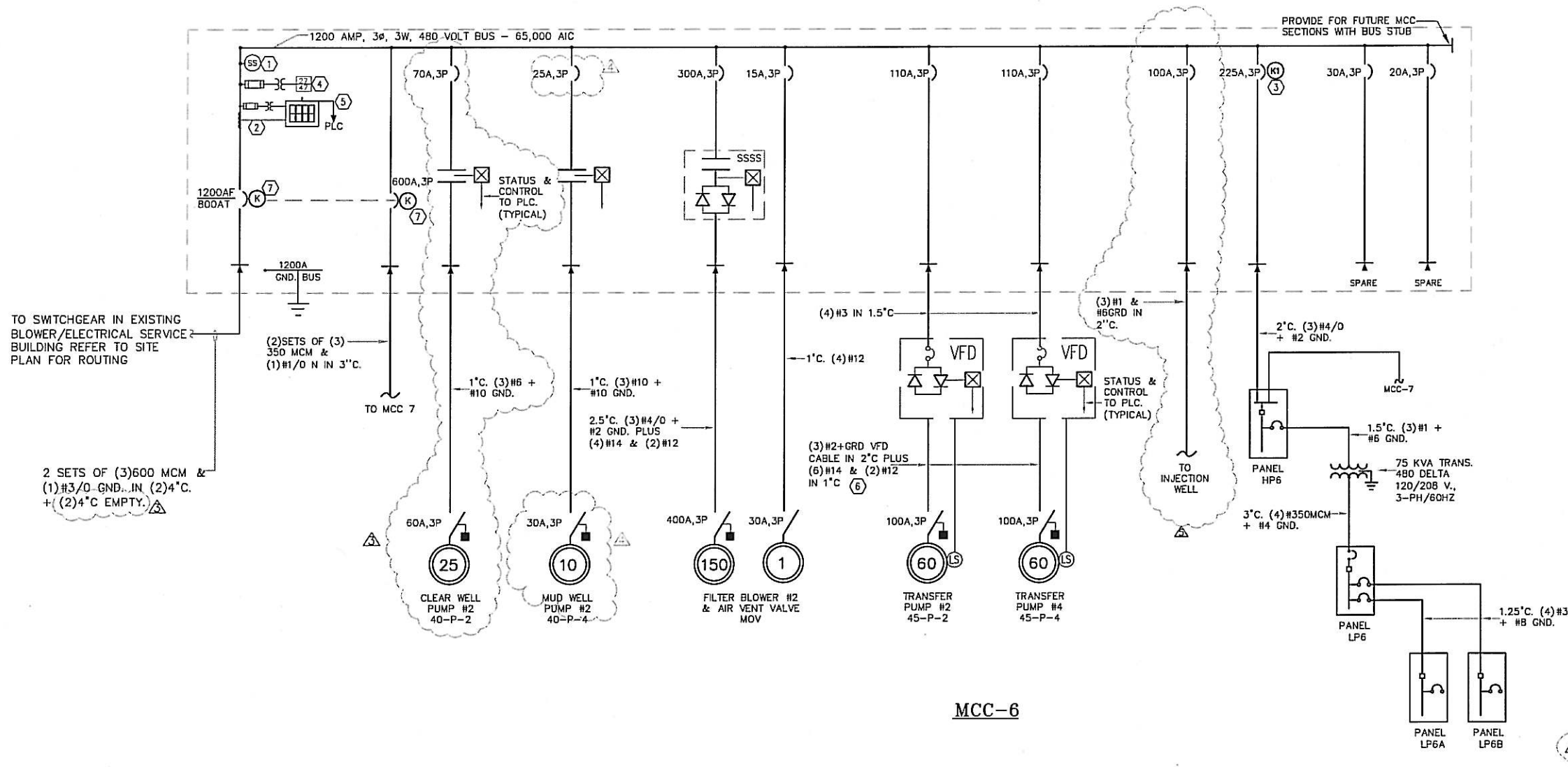


Attachment 1 - E201

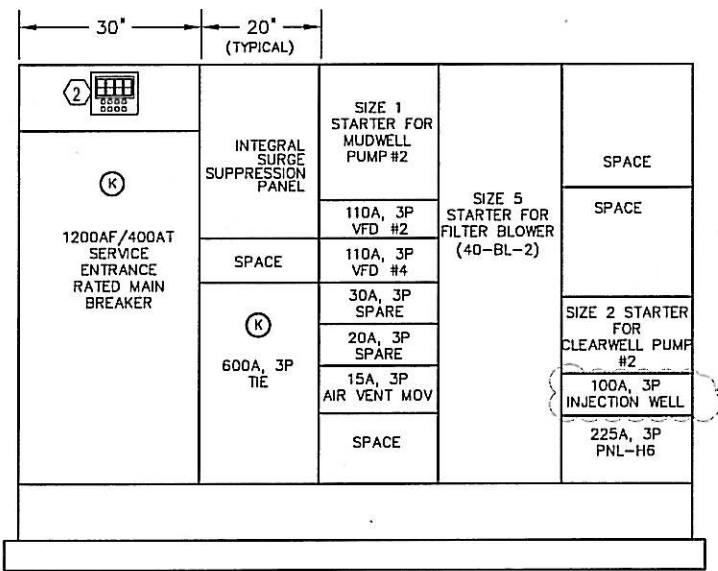


| PANEL: | HP6 | BUS: | 225A, MLD | VOLTAGE: | 480V, 3P, 3W |
|------------|------------------------------------|--------|------------------------------------|----------|------------------|
| MOUNTING: | SURFACE | POLES: | 42 WITH INTEGRAL SURGE SUPPRESSION | | |
| LOCATION: | ELECTRICAL ROOM | | | | NEMA 1 ENCLOSURE |
| CIR. NO. | DESCRIPTION | TRIP | POLES | REMARKS | |
| 1, 3, 5 | GATE ACTUATOR | 20 | 3 | | |
| 2, 4, 6 | GATE ACTUATOR | 20 | 3 | | |
| 7, 9, 11 | GATE ACTUATOR | 20 | 3 | | |
| 8, 10, 12 | GATE ACTUATOR | 20 | 3 | | |
| 13, 15, 17 | GATE ACTUATOR | 20 | 3 | | |
| 14, 16, 18 | GATE ACTUATOR | 20 | 3 | | |
| 19, 21, 23 | PANEL LP6 VIA STEPDOWN TRANSFORMER | 125 | 3 | | |
| 20, 22, 24 | HOIST TROLLEY SYSTEM | 20 | 3 | | |
| 25, 27, 29 | AIR SCOUR VENT MOV | 20 | 3 | | |
| 26, 28, 30 | AIR SCOUR VENT MOV | 20 | 3 | | |
| 31, 33, 35 | SPARES | 20 | 3 | | |
| 32, 34, 36 | SPARES | 20 | 3 | | |
| 37, 39, 41 | SPARES | 20 | 3 | | |
| 38, 40, 42 | SPARES | 20 | 3 | | |
| ** | INTEGRAL SURGE SUPPRESSION | | | | |

| PANEL: | LP6 | BUS: | 400A, 300A MCB | VOLTAGE: | 208/120V, 3P, 4W |
|------------|-----------------------------------|--------|------------------------------------|----------|------------------|
| MOUNTING: | SURFACE | POLES: | 42 WITH INTEGRAL SURGE SUPPRESSION | | |
| LOCATION: | ELECTRICAL ROOM | | | | NEMA 1 ENCLOSURE |
| CIR. NO. | DESCRIPTION | TRIP | POLES | REMARKS | |
| 1, 3 | FILTER BUILDING INTERIOR LIGHTING | 20 | 1 | | |
| 2 | FILTER BUILDING EXTERIOR LIGHTING | 20 | 1 | | |
| 4, 6 | FILTER BUILDING RECEPTACLES | 20 | 1 | | |
| 5 | EXTERIOR SITE LIGHTING | 20 | 1 | | |
| 7 | SPARE | 20 | 1 | | |
| 8, 10 | PLC CABINET | 20 | 1 | | |
| 9 | 17 & C7 TERMINATION CABINETS | 20 | 1 | | |
| 11 | SPARE | 20 | 1 | | |
| 12 | HVAC CONTROL PANEL | 20 | 1 | | |
| 13 | LIGHTING CONTROL PANEL | 20 | 1 | | |
| 14, 16, 18 | FILTER LIGHTING | 20 | 1 | | |
| 15, 17, 19 | FILTER LIGHTING & RECEPTACLES | 20 | 1 | | |
| 20 | SPARE | 20 | 1 | | |
| 21 | SPARE | 20 | 1 | | |
| 22 | SPARE | 20 | 1 | | |
| 23 | SPARE | 20 | 1 | | |
| 24, 26 | FILTER MASTER CONTROL PANEL | 20 | 1 | | |
| 25, 27 | CU-1 | 30 | 2 | ** | HACR RATED |
| 28, 30 | AHU-1 | 20 | 2 | ** | HACR RATED |
| 29, 31 | CU-2 | 30 | 2 | ** | HACR RATED |
| 32, 34 | AHU-2 | 20 | 2 | ** | HACR RATED |
| 33, 35, 37 | PANEL LP6A | 100 | 3 | | |
| 36, 38, 40 | PANEL LP6B | 100 | 3 | | |
| 39- 42 | SPARES | 20 | 1 | | |
| ** | INTEGRAL SURGE SUPPRESSION | | | | |

* VERIFY WITH SHOP DRAWINGS

** PROVIDE PANELBOARDS WITH INTEGRAL SURGE SUPPRESSION MODULES EQUAL TO CUTLER HAMMER CLIPPER SYSTEM MOD#CPS-33 RATED 200KA PER PHASE, 100KA L-L, L-G. MIL SPEC FILTER, DIRECT BUS BAR CONNECTION, 10YR WARRANTY



MCC-6 FRONT VIEW

GENERAL NOTES:

1. ALL LOCAL SWITCHES (OFF/REMOTE; HAND-OFF-REMOTE) AT MOTOR LOCATION INCLUDES (BUT IS NOT INDICATED), A SERIES AUX CONTACT IN THE DISCONNECT SWITCH. IF THE DISCONNECT IS OFF OR THE LOCAL SWITCH IS OFF THE AUTO READY RELAY IS DE-ENERGIZED.

- KEYNOTES:**
- INTEGRAL SURGE SUPPRESSION PANEL WITH BUS STAB IN CONNECTION; RATED FOR 200,000 AMPS PER PHASE SINGLE PULSE SURGE CURRENT; 100,000 AMPS PER MODULE; 277/480V 3PH-4W. PROVIDE UNIT WITH EMI/RFI FILTER, SURGE COUNTER INTEGRAL FUSED DISCONNECT, AND PILOT LIGHT STATUS MONITOR. UNIT RATED 1000V UL1449 LINE TO GROUND; 2000V LINE TO LINE. CURRENT TECHNOLOGY C-GUARD OR EQUAL BY MCC MANUFACTURER.
 - PROPOSED MCC INTEGRAL DIGITAL METERING.
 - KIRKKEY INTERLOCKED FEEDER BREAKER, KEY K1 IS REQUIRED TO BE INSERTED TO CLOSE BREAKER.
 - PHASE SEQUENCE, IMBALANCE VOLTAGE RELAY & 3PHASE UNDERVOLTAGE RELAY. PROVIDE MULTIPOLE RELAY; FACTORY WIRED INTO ALL STARTER CONTROL CIRCUITS WITHIN MCC. PROVIDE CONTACT TO PLC. PROVIDE FRONT PANEL INDICATOR LIGHT ("3-PHASE VOLTAGE FAULT").
 - 5 CONDUCTOR #14 CONTROL CABLE IN 1" C
 - VERIFY VFD CONDUIT SIZE WITH CABLE MANUFACTURER.
 - KIRKKEY INTERLOCK MAIN BREAKER WITH MCC7 MAIN/TIE. KEY IS REQUIRED TO BE INSERTED TO CLOSE BREAKER.

DWG: V:\Projects\LEU (Lee County)\100 (Fort Myers Beach WWP Filter Replacement)\DWG\Plan set\Electrical\Attachment 1 - E201.dwg
 DATE: 05/22/2006 10:58am
 USER: erench
 SHEET: 0118

| | | | | | |
|-----------|-------|-------|---------|------------------------|-------|
| SCALE: | NONE | DATE: | 3/28/06 | ASBUILTS: | DW |
| DATE: | 05/05 | DATE: | 3/24/06 | INJECTION WELL REFEED: | DW |
| DRAWN: | TMP | DATE: | 2/15/06 | Shop Drg Coord: | DW |
| DESIGN: | DHW | DATE: | 9/01/05 | ADDENDA#3: | TMP |
| CHECK: | DHW | DATE: | 7/25/05 | ADDENDA#2: | AK |
| APPROVED: | DHW | DATE: | 7/5/05 | ADDENDA#1: | AK |
| APPROVED: | DHW | DATE: | | REMARKS: | DRAWN |

LEE COUNTY UTILITIES ENGINEERING

1500 Monroe St. Fort Myers, Florida 33901
 Ph. (239) 479-8181 Fax. (239) 479-8176

LEE COUNTY SOUTHWEST FLORIDA

BOYLE ENGINEERING CORPORATION

4415 Metro Parkway, Suite 404
 Fort Myers, Florida 33916 (239) 278-7996
 FL Engineering Business No. EB-2005

RKS Consulting Engineers

Electrical, Instrumentation & Control Design
 15405 Shamrock Dr. Fort Myers, FL 33912

DDH WILLIAMS P.E.
 PE #29504 Certificate of Authorization #8212

WASTEWATER TREATMENT PLANT FILTER REPLACEMENT

PROPOSED FILTER ELECTRICAL SERVICE SINGLE LINE & MCC-6 ELEVATIONS

SHEET: **E-201**

067 OF 075