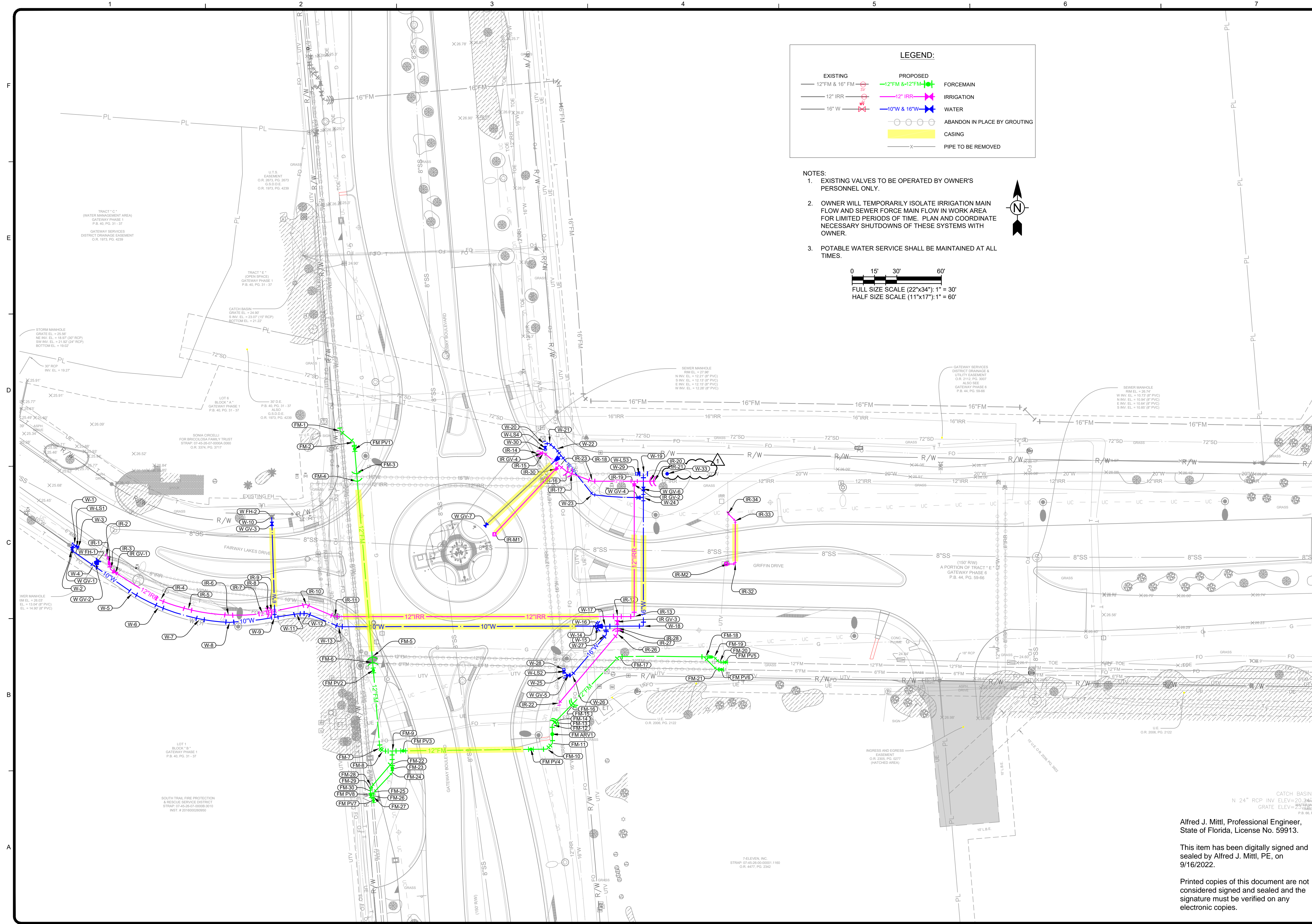


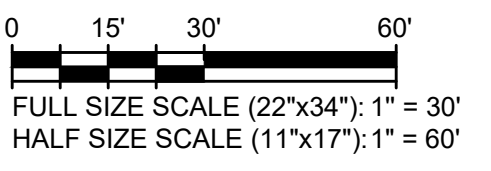
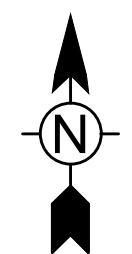
9/16/2022 8:30:32 AM - C:\PROJECTS\ORLANDO\IER37678\200-37678-200\10\CAD\SHEETFILES\C-100 OVERALL SITE PLAN.DWG - MARQUEZ, GERMAN



**LEGEND:**

EXISTING	PROPOSED	FORCEMAIN
12" FM & 16" FM	12" FM & 12" FM	IRRIGATION
12" IRR	12" IRR	WATER
16" W	10" W & 16" W	ABANDON IN PLACE BY GROUTING
		CASING
		PIPE TO BE REMOVED

- NOTES:**
- EXISTING VALVES TO BE OPERATED BY OWNER'S PERSONNEL ONLY.
  - OWNER WILL TEMPORARILY ISOLATE IRRIGATION MAIN FLOW AND SEWER FORCE MAIN FLOW IN WORK AREA FOR LIMITED PERIODS OF TIME. PLAN AND COORDINATE NECESSARY SHUTDOWNS OF THESE SYSTEMS WITH OWNER.
  - POTABLE WATER SERVICE SHALL BE MAINTAINED AT ALL TIMES.



MATCH LINE - SEE CONTINUATION ON SHEET C-101

**TETRA TECH**  
 ENGINEERING BUSINESS No. 2429  
 WWW.TETRA-TECH.COM  
 10600 CHEVROLET WAY, SUITE 102  
 ESTERO, FLORIDA 33928  
 Ph: (239) 390-1467 Fax: (239) 390-1769



Alfred J. Mittl, P.E.  
 P.E. No. 59913, FL  
 Tetra Tech, Suite 102  
 10600 Chevrolet Way, Estero, Florida 33928  
 Engineering Business No. 2429

MARK	DATE	DESCRIPTION	BY	DATE
▲	9/15/22	ADDED POTABLE WATER	AM	
		TEMPORARY LINE STOP		

GATEWAY SERVICES DISTRICT  
 GATEWAY BLVD / GRIFFIN DRIVE  
 UTILITY RELOCATION  
 GATEWAY BLVD AND  
 GRIFFIN LS SITE PLAN  
 EAST

Project No.: 200-37678-20010  
 Designed By: TW  
 Drawn By: GM  
 Checked By: TW

**C-100**

Copyright: Tetra Tech

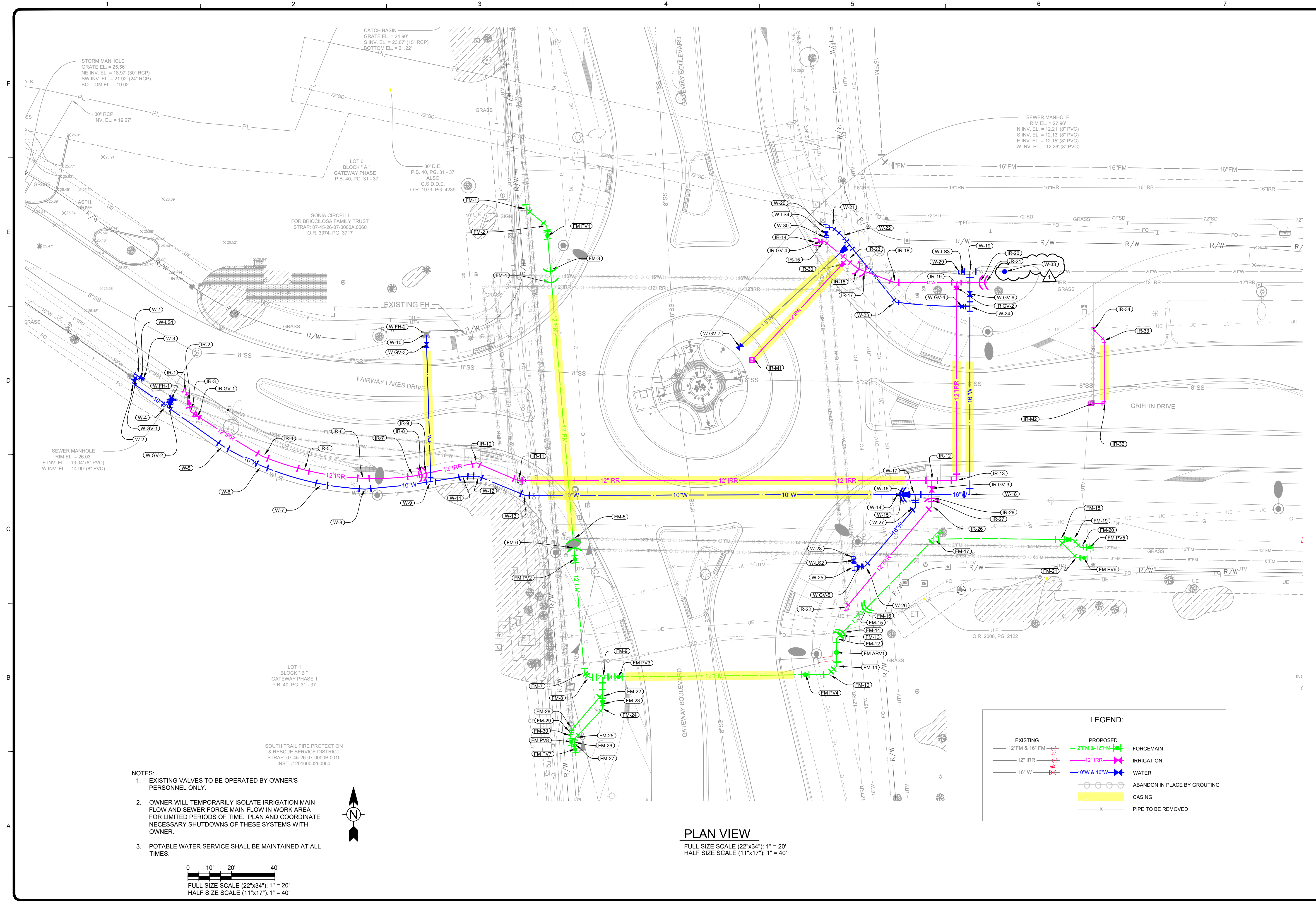
Bar Measures 1 inch

Alfred J. Mittl, Professional Engineer,  
 State of Florida, License No. 59913.

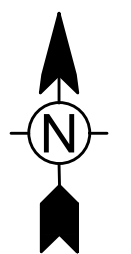
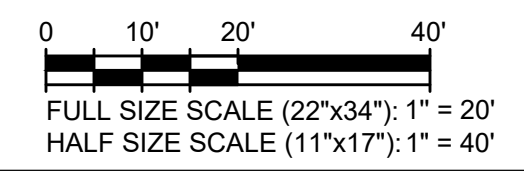
This item has been digitally signed and sealed by Alfred J. Mittl, PE, on 9/16/2022.

Printed copies of this document are not considered signed and sealed and the signature must be verified on any electronic copies.

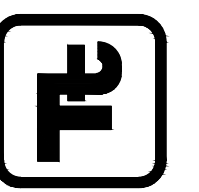
9/16/2022 8:30:53 AM - C:\PROJECTS\ORLANDO\IER37678\200-37678-200\10\CAD\SHETS\FILES\C-100 OVERALL SITE PLAN.DWG - MARQUEZ, GERMAN



- NOTES:**
- EXISTING VALVES TO BE OPERATED BY OWNER'S PERSONNEL ONLY.
  - OWNER WILL TEMPORARILY ISOLATE IRRIGATION MAIN FLOW AND SEWER FORCE MAIN FLOW IN WORK AREA FOR LIMITED PERIODS OF TIME. PLAN AND COORDINATE NECESSARY SHUTDOWNS OF THESE SYSTEMS WITH OWNER.
  - POTABLE WATER SERVICE SHALL BE MAINTAINED AT ALL TIMES.




**PLAN VIEW**  
 FULL SIZE SCALE (22"x34"): 1" = 20'  
 HALF SIZE SCALE (11"x17"): 1" = 40'



**TETRA TECH**  
 ENGINEERING BUSINESS No. 2429  
 WWW.TETRA-TECH.COM

10600 CHEVROLET WAY, SUITE 102  
 ESTERO, FLORIDA 33928  
 Ph: (239) 390-1467 Fax: (239) 390-1769



**GATEWAY SERVICES DISTRICT**

Alfred J. Mihl, P.E.  
 P.E. No. 55913, FL  
 Tetra Tech, Suite 102  
 10600 Chevrolet Way, Estero, Florida 33928  
 Engineering Business No. 2429

MARK	DATE	DESCRIPTION	BY	DATE
A	9/15/22	ADDED POTABLE WATER	AJM	
		TEMPORARY LINE STOP		

GATEWAY SERVICES DISTRICT  
 GATEWAY BLVD / GRIFFIN DRIVE  
 UTILITY RELOCATION

**OVERALL SITE PLAN  
 AT GATEWAY AND GRIFFIN**

Project No.: 200-37678-20010  
 Designed By: TW  
 Drawn By: GM  
 Checked By: TW

C-102

Copyright: Tetra Tech  
Bar Measures 1 inch

WATER TABLES

FITTING TABLE				
ID	DIAMETER	TYPE	COORDINATES	ELEV. (CENTER)
W-1	10 X 10	TEE	N:813596.4001 E:737967.7734	22.42
W-2	10	90° BEND	N:813593.0515 E:737965.4750	22.27
W-3	10	CAP	N:813594.6871 E:737970.3426	22.42
W-4	10 X 6	TEE	N:813582.1199 E:737981.3142	22.29
W-5	10	11.25° BEND	N:813563.8681 E:738007.2516	22.42
W-6	10	11.25° BEND	N:813554.6416 E:738025.0405	22.47
W-7	10	11.25° BEND	N:813546.2721 E:738052.5437	22.55
W-8	10	11.25° BEND	N:813544.2140 E:738072.4377	22.61
W-9	10 X 6	TEE	N:813547.4713 E:738102.8091	22.65
W-10	6	90° BEND	N:813615.5409 E:738100.5843	22.66
W-11	10	11.25° BEND	N:813550.0393 E:738117.7193	22.42
W-12	10	22.5° BEND	N:813550.1284 E:738124.3685	22.22
W-13	10	22.5° BEND	N:813541.3110 E:738146.0445	21.11
W-14	10	45° BEND	N:813541.6501 E:738117.6794	20.88
W-15	10	45° BEND	N:813541.6516 E:738319.9081	22.70
W-16	16 X 10	REDUCER	N:813541.6505 E:738322.1771	22.70
W-17	16 X 16	TEE	N:813541.6490 E:738325.3667	22.70
W-18	16	90° BEND	N:813541.6991 E:738350.6178	22.60
W-19	20 X 16	TEE	N:813644.2569 E:738350.6753	22.66
W-20	16 X 16	TEE	N:813664.4166 E:738284.2879	22.87
W-21	16	45° BEND	N:813664.6836 E:738287.2720	22.84
W-22	16	11.25° BEND	N:813660.9590 E:738291.7292	22.82
W-23	16	45° BEND	N:813630.1714 E:738316.6003	22.87
W-24	16 X 16	TEE	N:813628.2144 E:738350.6322	22.63
W-25	16 X 16	TEE	N:813508.3850 E:738297.4583	23.05
W-26	16	45° BEND	N:813508.7916 E:738302.5088	23.04
W-27	16	45° BEND	N:813536.0780 E:738325.7283	22.71
W-28	16	CAP	N:813512.8508 E:738297.0792	23.05
W-29	20	CAP	N:813644.2683 E:738345.8195	23.00
W-30	16	CAP	N:813659.9517 E:738284.6781	22.87
W-31	16 X 6	TEE	N:813656.5278 E:738295.3088	22.83
W-32	6 X 3	REDUCER	N:813654.2834 E:738292.5305	22.83
W-33	20	TEMPORARY LINE STOP	N:813644.2683 E:738366.5975	22.65

PIPE TABLE		
LENGTH	PIPE SIZE	DESCRIPTION
0.68'	10"	PROP 10" WTR*
0.73'	10"	PROP 10" WTR*
0.98'	10"	PROP 10" WTR*
0.99'	16"	PROP 16" WTR*
1.03'	16"	PROP 16" WTR*
1.08'	16"	PROP 16" WTR*
1.14'	6"	PROP 6" WTR*
1.19'	16"	PROP 16" WTR*
1.27'	6"	PROP 6" WTR*
1.46'	10"	PROP 10" WTR*
1.81'	16"	PROP 16" WTR*
1.95'	6"	PROP 6" WTR*
3.67'	16"	PROP 16" WTR*
3.78'	16"	PROP 16" WTR*
4.06'	6"	PROP 6" WTR*
4.06'	16"	PROP 16" WTR*
4.48'	16"	PROP 16" WTR*
5.57'	10"	PROP 10" WTR*
8.09'	16"	PROP 16" WTR*
9.51'	16"	PROP 16" WTR*
9.64'	16"	PROP 16" WTR*
9.64'	10"	PROP 10" WTR*
10.09'	16"	PROP 16" WTR*
10.13'	10"	PROP 10" WTR*
11.55'	10"	PROP 10" WTR*
13.67'	10"	PROP 10" WTR*
17.41'	10"	PROP 10" WTR*
18.92'	10"	PROP 10" WTR*
18.96'	10"	PROP 10" WTR*
19.46'	10"	PROP 10" WTR*
22.32'	10"	PROP 10" WTR*
22.75'	16"	PROP 16" WTR*
27.67'	10"	PROP 10" WTR*
30.26'	10"	PROP 10" WTR*
31.97'	16"	PROP 16" WTR*
34.50'	16"	PROP 16" WTR*
61.93'	6"	PROP 6" WTR*
64.67'	1.5"	PROP 1.5" WTR*
84.02'	16"	PROP 16" WTR*
148.88'	10"	PROP 10" WTR*

PIPE TABLE		
LENGTH	PIPE SIZE	DESCRIPTION
51.01'	30"	30" CASING PIPE (WTR)*
52.80'	12"	12" CASING PIPE (WTR)*
148.92'	20"	20" CASING PIPE (WTR)*

APPURTENANCE TABLE				
ID	DIAMETER	TYPE	COORDINATES	ELEV. (CENTER)
W-LS1	10"	PROP 10" WATER HOT TAP WITH LINE STOP AND CAP	N:813595.2630 E:737969.4638	22.42
W-LS2	16"	PROP 16" WATER HOT TAP WITH LINE STOP AND CAP	N:813511.2946 E:738297.2139	23.05
W-LS3	20"	PROP 20" WATER HOT TAP WITH LINE STOP AND CAP	N:813644.2569 E:738347.5101	22.66
W-LS4	16"	PROP 16" WATER HOT TAP WITH LINE STOP AND CAP	N:813661.5889 E:738284.5426	22.87
W-FH-1	6"	FIRE HYDRANT	N:813585.3268 E:737983.4691	22.64
W-FH-2	6"	RELOCATED EX FIRE HYDRANT	N:813615.5051 E:738100.5192	27.17
W-GV-1	10"	GATE VALVE	N:813594.7449 E:737966.8420	22.36
W-GV-2	6"	GATE VALVE	N:813584.1514 E:737982.6859	22.47
W-GV-3	6"	GATE VALVE	N:813610.5500 E:738100.7406	22.67
W-GV-4	16"	GATE VALVE	N:813628.2660 E:738347.0013	22.64
W-GV-5	16"	GATE VALVE	N:813508.6131 E:738300.2920	23.05
W-GV-6	16"	GATE VALVE	N:813634.0958 E:738359.6510	22.64
W-GV-7	4"	GATE VALVE	N:813609.7513 E:738244.8343	22.83

IRRIGATION TABLES

PIPE TABLE		
LENGTH	PIPE SIZE	DESCRIPTION
0.27'	12"	PROP 12" IRR*
0.74'	12"	PROP 12" IRR*
0.86'	12"	PROP 12" IRR*
0.96'	12"	PROP 12" IRR*
1.51'	12"	PROP 12" IRR*
1.55'	12"	PROP 12" IRR*
1.61'	4"	PROP 4" IRR*
1.88'	12"	PROP 12" IRR*
2.14'	12"	PROP 12" IRR*
2.40'	12"	PROP 12" IRR*
2.68'	12"	PROP 12" IRR*
2.93'	12"	PROP 12" IRR*
3.08'	12"	PROP 12" IRR*
3.19'	12"	PROP 12" IRR*
4.10'	6"	PROP 6" IRR*
4.42'	2"	PROP 2" IRR SERVICE LINE*
5.03'	12"	PROP 12" IRR*
6.41'	2"	PROP 2" IRR SERVICE LINE*
7.53'	12"	PROP 12" IRR*
8.84'	12"	PROP 12" IRR*
9.32'	12"	PROP 12" IRR*
11.47'	12"	PROP 12" IRR*
13.16'	12"	PROP 12" IRR*
16.00'	12"	PROP 12" IRR*
18.02'	12"	PROP 12" IRR*
18.61'	12"	PROP 12" IRR*
19.57'	12"	PROP 12" IRR*
21.82'	12"	PROP 12" IRR*
22.20'	12"	PROP 12" IRR*
26.66'	12"	PROP 12" IRR*
26.81'	12"	PROP 12" IRR*
28.21'	2"	PROP 2" IRR SERVICE LINE*
59.36'	2"	PROP 2" IRR*
59.63'	12"	PROP 12" IRR*
87.31'	12"	PROP 12" IRR*
181.24'	12"	PROP 12" IRR*

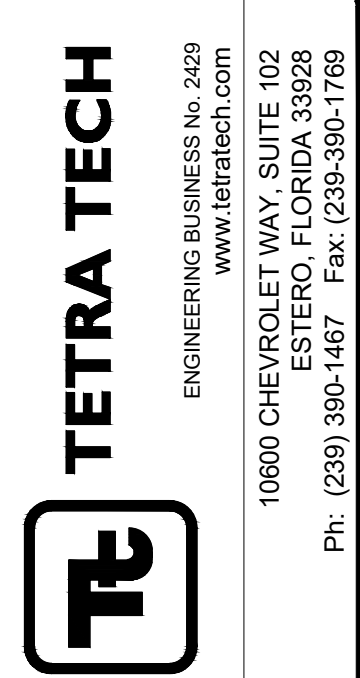
PIPE TABLE		
LENGTH	PIPE SIZE	DESCRIPTION
25.23'	4"	4" CASING PIPE (IRR)*
51.35'	24"	24" CASING PIPE (IRR)*
172.05'	24"	24" CASING PIPE (IRR)*

FITTING TABLE				
ID	DIAMETER	TYPE	COORDINATES	ELEV. (CENTER)
IR-1	6	45° BEND	N:813588.0773 E:737990.0646	22.38
IR-2	12 X 6	REDUCER	N:813584.1177 E:737991.2520	22.38
IR-3	12	45° BEND	N:813579.9212 E:737992.1570	22.39
IR-4	12	11.25° BEND	N:813559.2852 E:738025.2700	22.45
IR-5	12	11.25° BEND	N:813552.7781 E:738044.0352	22.48
IR-6	12	11.25° BEND	N:813548.8907 E:738071.6759	22.53
IR-7	12	11.25° BEND	N:813550.1905 E:738094.7088	22.55
IR-8	12	45° BEND	N:813550.9689 E:738098.2741	22.54
IR-9	12	45° BEND	N:813551.4615 E:738100.6167	20.88
IR-10	12	45° BEND	N:813556.2869 E:738123.5673	20.95
IR-11	12	22.5° BEND	N:813548.1451 E:738142.7173	21.00
IR-12	12 X 12	TEE	N:813548.1689 E:738333.1111	20.96
IR-13	12	90° BEND	N:813548.1423 E:738344.4310	20.93
IR-14	12 X 12	TEE	N:813657.8613 E:738279.8533	22.84
IR-15	12	45° BEND	N:813658.2167 E:738263.8609	22.87
IR-16	12	45° BEND	N:813645.6081 E:738299.0804	22.98
IR-17	12	45° BEND	N:813644.3115 E:738302.5301	20.49
IR-18	12	22.5° BEND	N:813639.2483 E:738316.0010	20.57

FITTING TABLE				
ID	DIAMETER	TYPE	COORDINATES	ELEV. (CENTER)
IR-19	12 X 12	TEE	N:813639.2335 E:738344.4349	20.39
IR-20	12	45° BEND	N:813639.2364 E:738354.8989	20.39
IR-21	12	45° BEND	N:813639.2364 E:738357.6587	22.98
IR-22	12	45° BEND	N:813489.8985 E:738293.8517	21.84
IR-23	12 X 4	TEE	N:813649.8586 E:738293.9564	22.94
IR-26	12	45° BEND	N:813536.4109 E:738333.1242	21.83
IR-27	12	45° BEND	N:813539.2057 E:738333.1326	21.82
IR-28	12	45° BEND	N:813540.3963 E:738333.1361	20.61
IR-30	4 X 3	REDUCER	N:813647.6283 E:738292.1063	22.94
IR-32	4	90° BEND	N:813583.5570 E:738412.4228	24.47
IR-33	4	45° BEND	N:813612.6413 E:738412.4100	23.21
IR-34	4	45° BEND	N:813617.6430 E:738407.4083	23.15

APPURTENANCE TABLE				
ID	DIAMETER	TYPE	COORDINATES	ELEV. (CENTER)
IR-M1	2"	2" IRR METER	N:813604.2834 E:738251.1179	22.94
IR-M2	2"	2" IRR METER	N:813583.5583 E:738407.4597	24.55
IR-GV-1	12"	GATE VALVE	N:813577.7716 E:737995.4867	22.38
IR-GV-2	12"	GATE VALVE	N:813636.8660 E:738344.4348	20.68
IR-GV-3	12"	GATE VALVE	N:813544.6184 E:738333.1148	20.66
IR-GV-4	12"	GATE VALVE	N:813658.0436 E:738281.9929	22.85

9/16/2022 8:35:37 AM - C:\PROJECTS\ORLANDO\IER376\200-37678-200\10\CAD\SHEETFILES\C-200 PROFILES.DWG - MARQUEZ, GERMAIN



Alfred J. Mihl, P.E.  
P.E. No. 58913, FL  
Tetra Tech, Suite 102  
10600 Chevolet Way, Estero, Florida 33928  
Engineering Business No. 2429

MARK	DATE	DESCRIPTION
1	9/15/22	ADDED POTABLE WATER
		TEMPORARY LINE STOP

GATEWAY SERVICES DISTRICT  
GATEWAY BLVD / GRIFFIN DRIVE  
UTILITY RELOCATION

IRRIGATION AND  
WATER MAIN TABLES

Project No.: 200-37678-20010  
Designed By: TW  
Drawn By: GM  
Checked By: TW

C-204