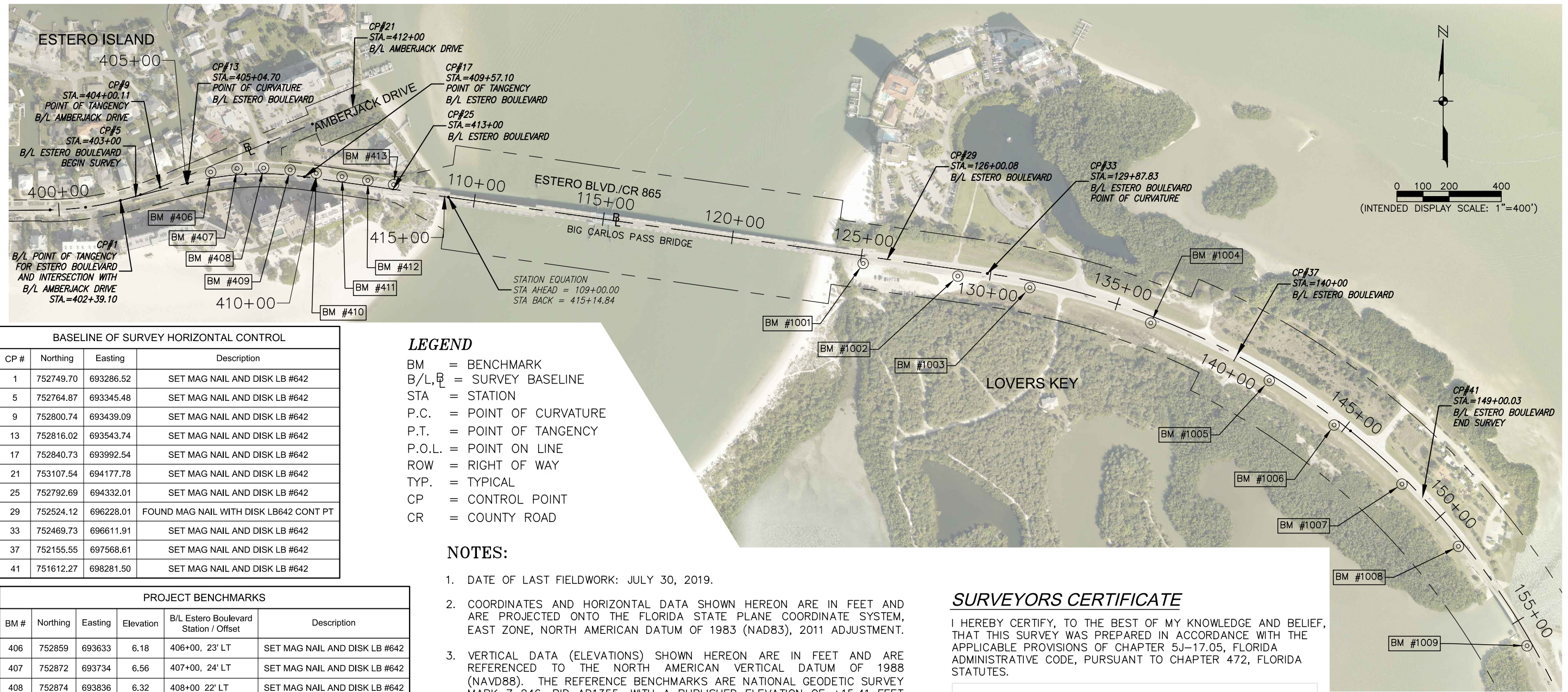


\\FTMS01\Drawings\2016\20160355-000\Surveying\Worksheets\20160355 Control Worksheet.dwg (SHEET 1) RGD Dec 13, 2021 - 1:44pm



BASELINE OF SURVEY HORIZONTAL CONTROL			
CP #	Northing	Easting	Description
1	752749.70	693286.52	SET MAG NAIL AND DISK LB #642
5	752764.87	693345.48	SET MAG NAIL AND DISK LB #642
9	752800.74	693439.09	SET MAG NAIL AND DISK LB #642
13	752816.02	693543.74	SET MAG NAIL AND DISK LB #642
17	752840.73	693992.54	SET MAG NAIL AND DISK LB #642
21	753107.54	694177.78	SET MAG NAIL AND DISK LB #642
25	752792.69	694332.01	SET MAG NAIL AND DISK LB #642
29	752524.12	696228.01	FOUND MAG NAIL WITH DISK LB642 CONT PT
33	752469.73	696611.91	SET MAG NAIL AND DISK LB #642
37	752155.55	697568.61	SET MAG NAIL AND DISK LB #642
41	751612.27	698281.50	SET MAG NAIL AND DISK LB #642

**LEGEND**

- BM = BENCHMARK
- B/L,  $\overline{\text{B}}$  = SURVEY BASELINE
- STA = STATION
- P.C. = POINT OF CURVATURE
- P.T. = POINT OF TANGENCY
- P.O.L. = POINT ON LINE
- ROW = RIGHT OF WAY
- TYP. = TYPICAL
- CP = CONTROL POINT
- CR = COUNTY ROAD

**NOTES:**

- DATE OF LAST FIELDWORK: JULY 30, 2019.
- COORDINATES AND HORIZONTAL DATA SHOWN HEREON ARE IN FEET AND ARE PROJECTED ONTO THE FLORIDA STATE PLANE COORDINATE SYSTEM, EAST ZONE, NORTH AMERICAN DATUM OF 1983 (NAD83), 2011 ADJUSTMENT.
- VERTICAL DATA (ELEVATIONS) SHOWN HEREON ARE IN FEET AND ARE REFERENCED TO THE NORTH AMERICAN VERTICAL DATUM OF 1988 (NAVD88). THE REFERENCE BENCHMARKS ARE NATIONAL GEODETIC SURVEY MARK Z 246, PID AD1355, WITH A PUBLISHED ELEVATION OF +15.41 FEET (NAVD88) AND NATIONAL GEODETIC SURVEY MARK 872 5325 TIDAL 3, PID AD1360, WITH A PUBLISHED ELEVATION OF +9.82 FEET (NAVD88).
- THE HORIZONTAL COORDINATES FOR BENCHMARKS SET HAVE BEEN ROUNDED THE NEAREST FOOT.
- THIS MAP WAS MADE SOLELY FOR THE PURPOSE OF DEPICTING THE HORIZONTAL AND VERTICAL CONTROL POINTS FOR THE BIG CARLOS PASS BRIDGE PROJECT.
- ADDITIONS OR DELETIONS TO THIS SURVEY MAP OR REPORT BY OTHER THAN THE SIGNING PARTY IS PROHIBITED WITHOUT THE WRITTEN CONSENT OF THE SIGNING PARTY.
- BASELINE OF SURVEY HORIZONTAL CONTROL POINT REFERENCE DETAILS ON SHEETS 2 AND 3.
- MAP CONSISTS OF 3 SHEETS. NOT VALID UNLESS ACCOMPANIED BY ALL SHEETS IN SET.

FIELD BOOK 2700, PAGE 52  
 FIELD BOOK 2798, PAGE 1  
 FIELD BOOK 2837, PAGE 22-25

**SURVEYORS CERTIFICATE**

I HEREBY CERTIFY, TO THE BEST OF MY KNOWLEDGE AND BELIEF, THAT THIS SURVEY WAS PREPARED IN ACCORDANCE WITH THE APPLICABLE PROVISIONS OF CHAPTER 5J-17.05, FLORIDA ADMINISTRATIVE CODE, PURSUANT TO CHAPTER 472, FLORIDA STATUTES.

THIS SURVEY HAS BEEN DIGITALLY SIGNED BY:  
 RICHARD G. DANIELS (FOR THE FIRM L.B. 642)  
 PROFESSIONAL SURVEYOR AND MAPPER  
 FLORIDA CERTIFICATE NO. 7229  
 ON THE DATE ADJACENT TO THE SEAL.

THIS CERTIFICATION IS TO THE DATE OF LAST FIELD WORK AS SHOWN IN NOTE 1 AND NOT THE SIGNATURE DATE. PRINTED COPIES OF THIS DOCUMENT ARE NOT CONSIDERED SIGNED AND SEALED, AND THE DIGITAL SIGNATURE MUST BE VERIFIED ON ANY ELECTRONIC COPIES.

MAP PREPARED BY:



JOHNSON ENGINEERING, INC.  
 2122 JOHNSON STREET  
 P.O. BOX 1550  
 FORT MYERS, FLORIDA 33902-1550  
 PHONE: (239) 334-0046  
 FAX: (239) 334-3661  
 E.B. #642 & L.B. #642

JEI PROJECT #20160355-001

REVISIONS			
DATE	DESCRIPTION	DATE	DESCRIPTION
12/13/2021	REVISED PER COMMENTS		

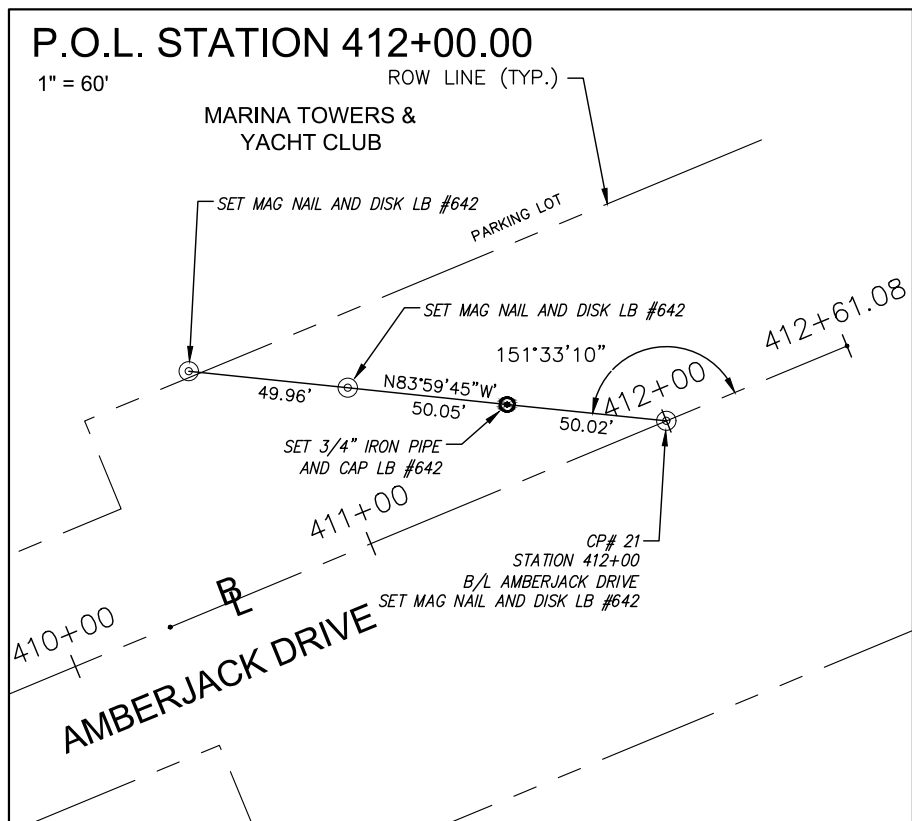
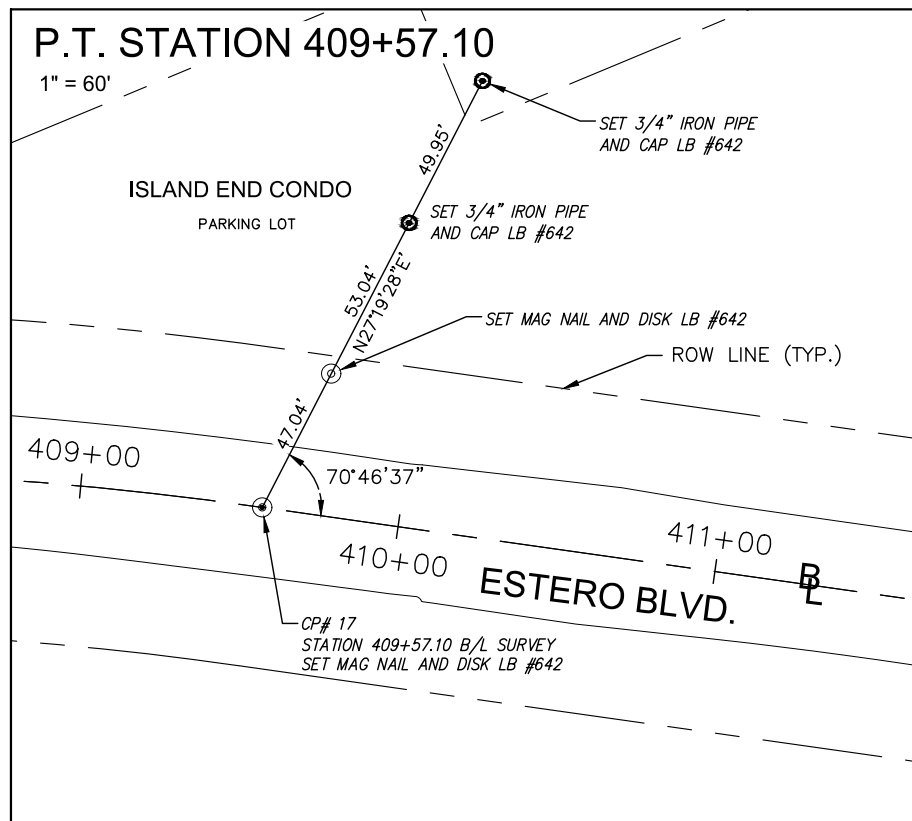
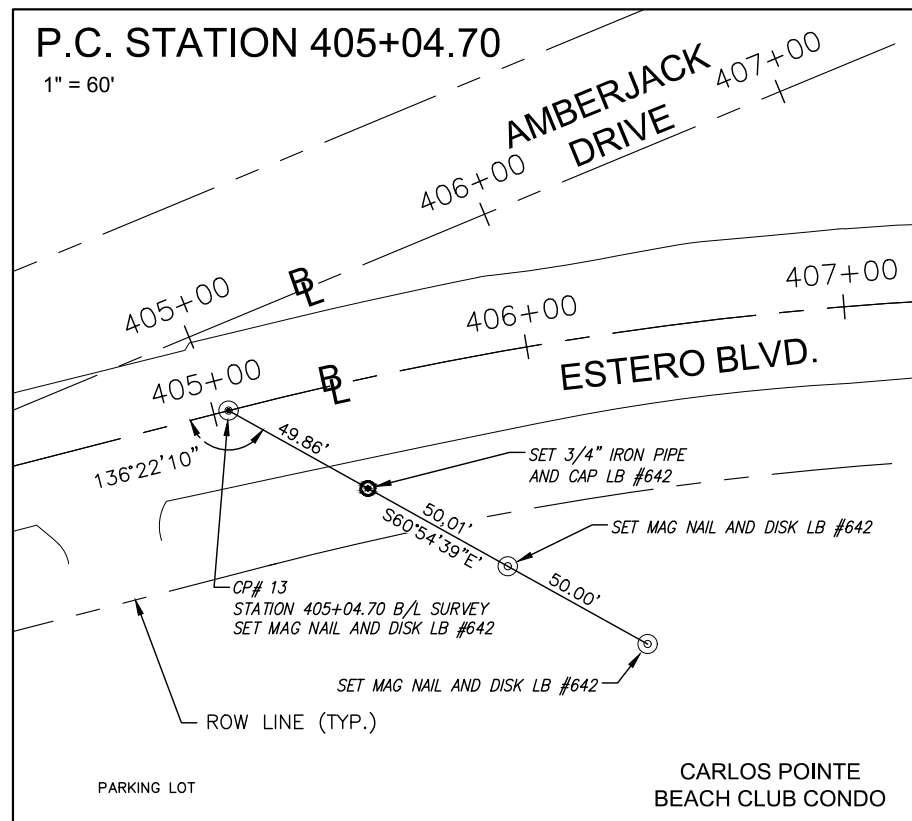
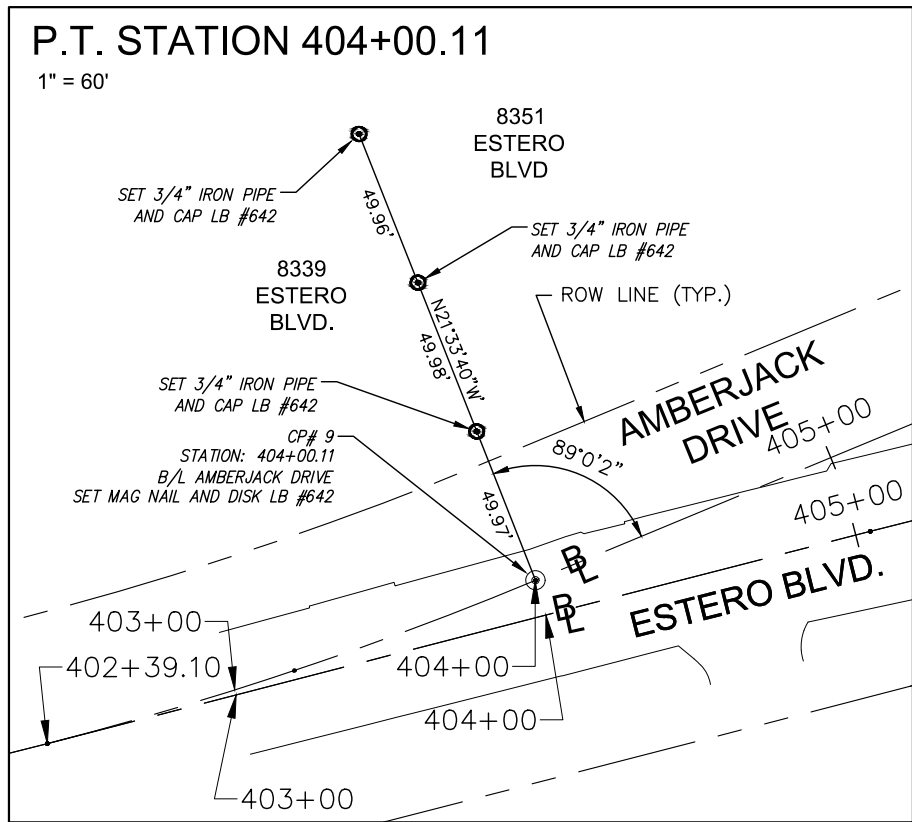
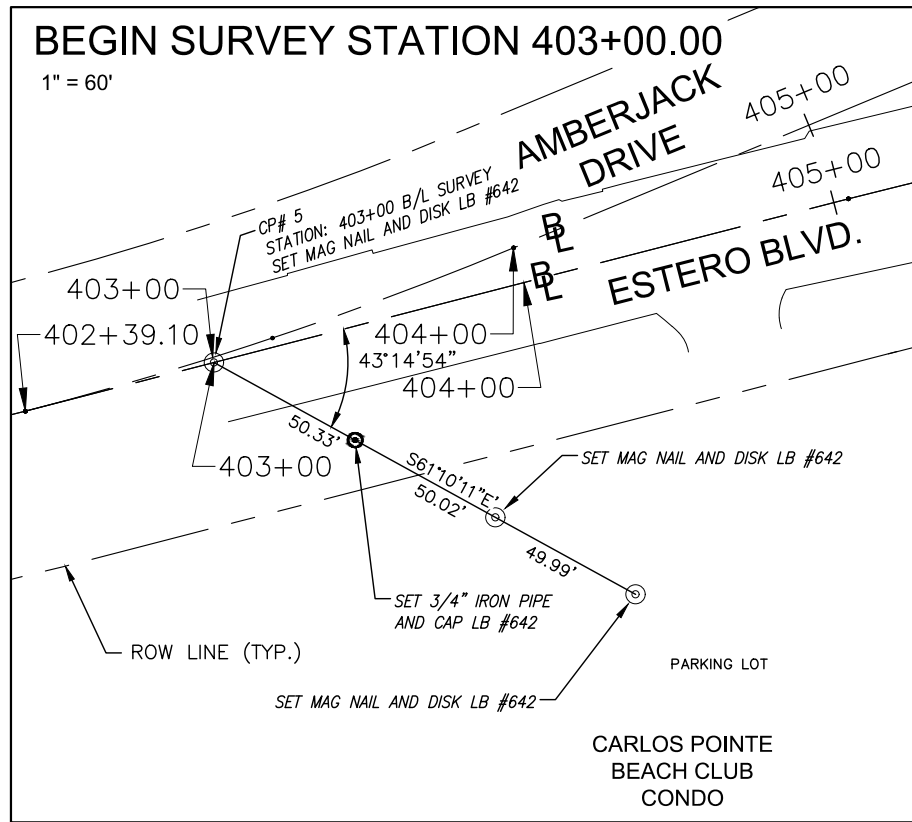
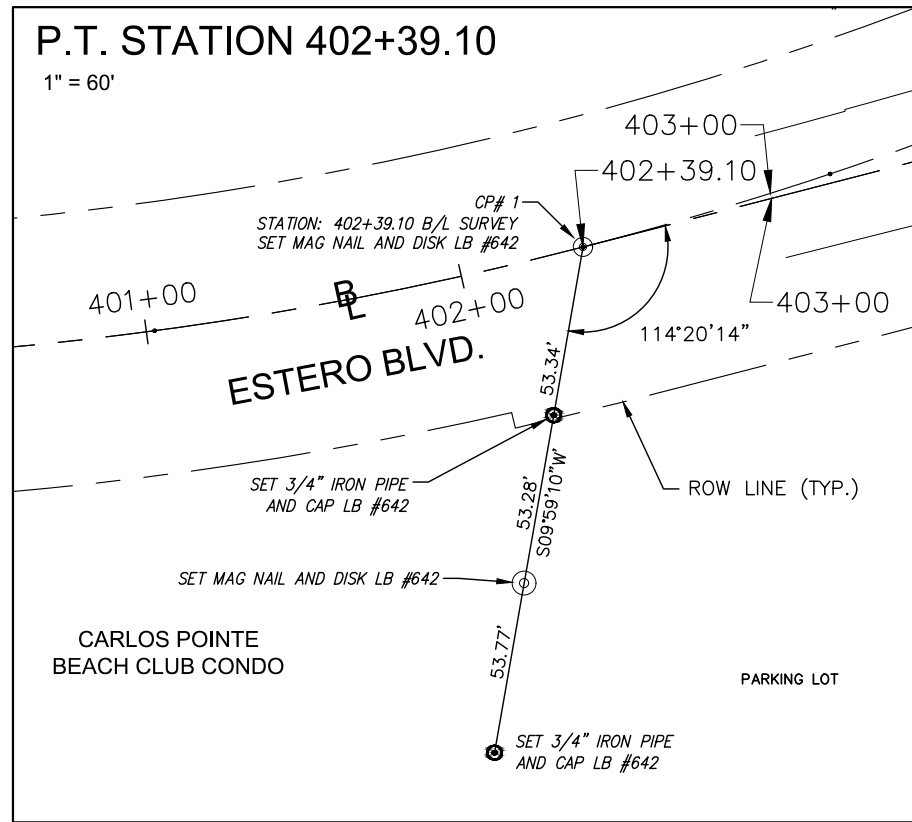
RICHARD G. DANIELS  
 PROFESSIONAL SURVEYOR AND MAPPER  
 FLORIDA CERTIFICATE NO. 7229  
 JOHNSON ENGINEERING, INC.  
 2122 JOHNSON STREET  
 FORT MYERS, FLORIDA 33901  
 PHONE: (239) 334-0046

LEE COUNTY DEPARTMENT OF TRANSPORTATION		
ROAD NO.	COUNTY	CONTRACT NO.
CR 865	LEE	CN16-0002

**PROJECT CONTROL SURVEY  
 BIG CARLOS PASS BRIDGE**  
 SECTION 3, TOWNSHIP 47 SOUTH, RANGE 24 EAST  
 LEE COUNTY, FLORIDA

SHEET NO.  
 CTL - 1

NOTICE: THE OFFICIAL RECORD OF THIS SHEET IS THE ELECTRONIC FILE DIGITALLY SIGNED AND SEALED UNDER RULE 5J-17.062, F.A.C.



PREPARED BY:  
JOHNSON ENGINEERING, INC.  
JEI PROJECT #20160355-001

REVISIONS			
DATE	DESCRIPTION	DATE	DESCRIPTION
12/13/2021	REVISED PER COMMENTS		

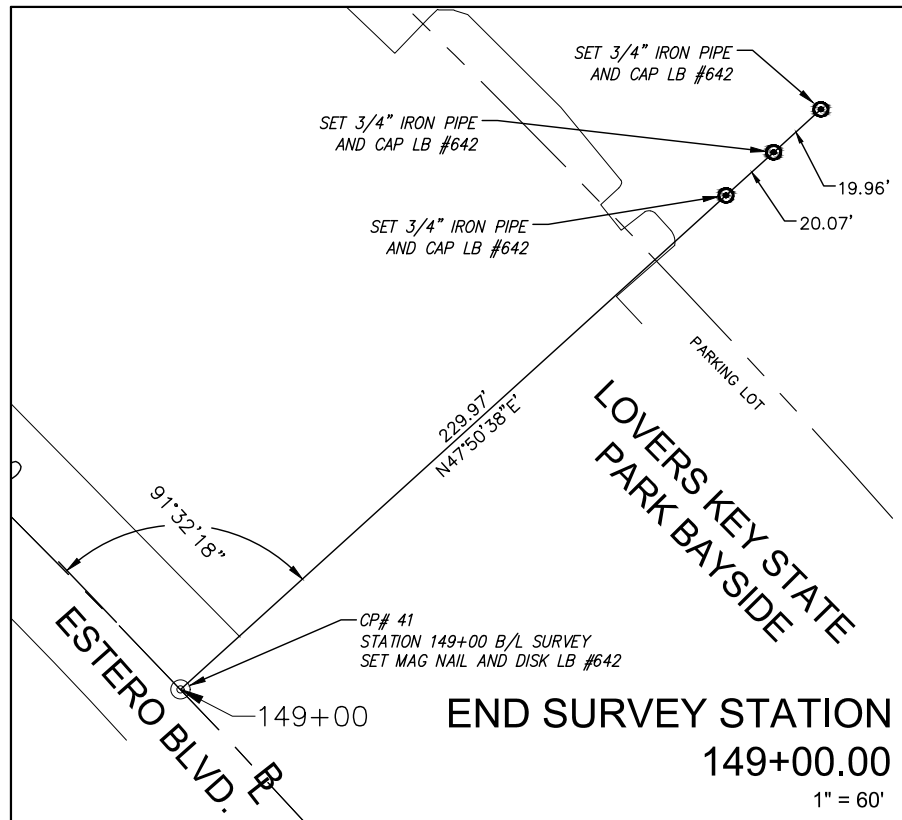
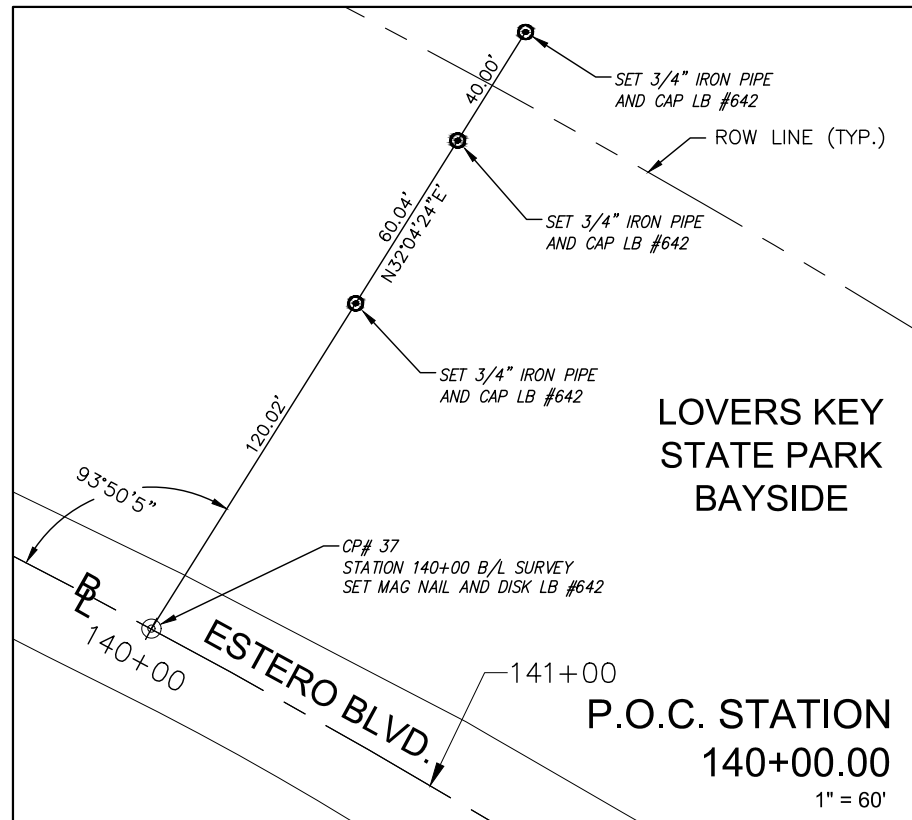
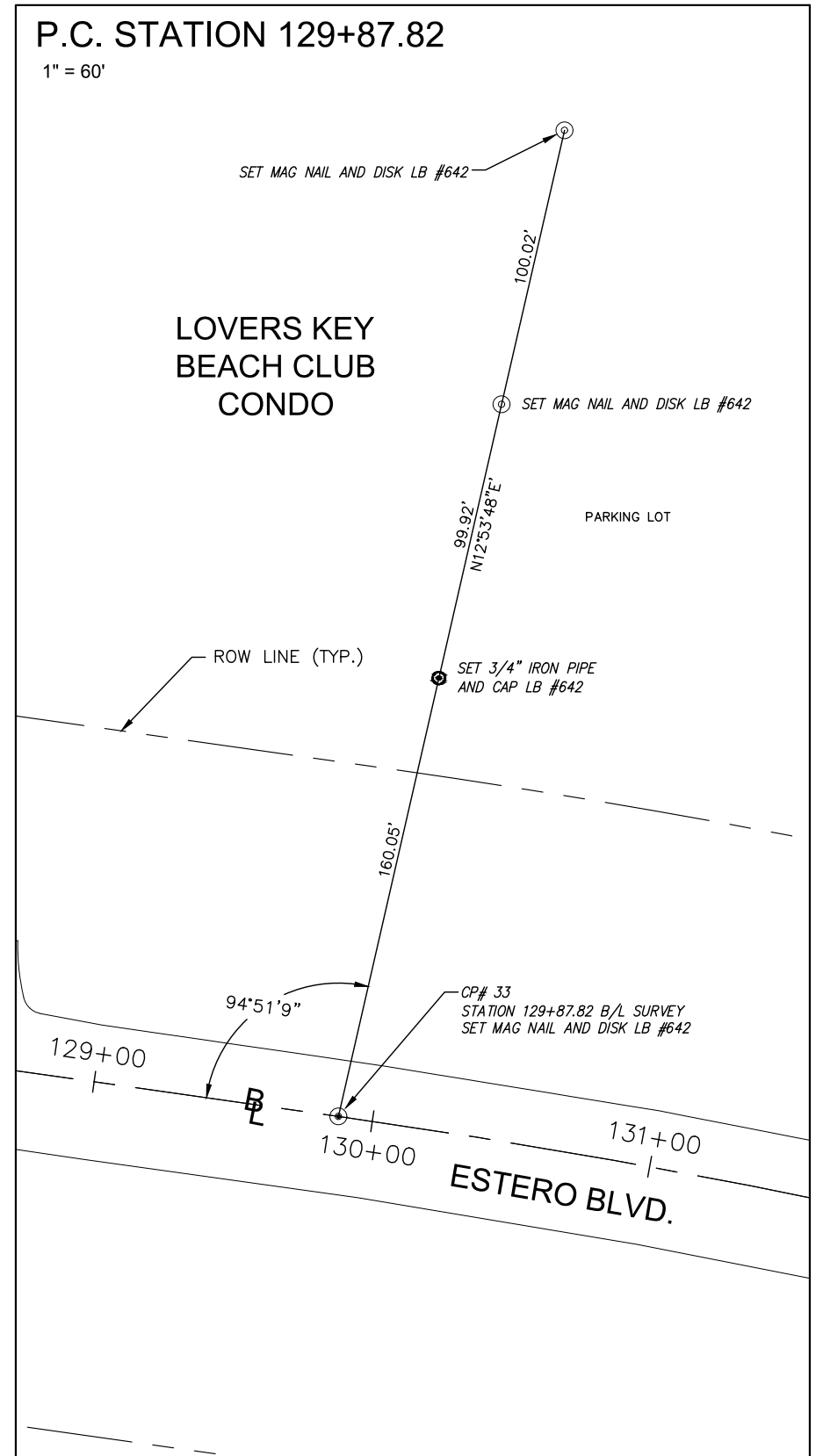
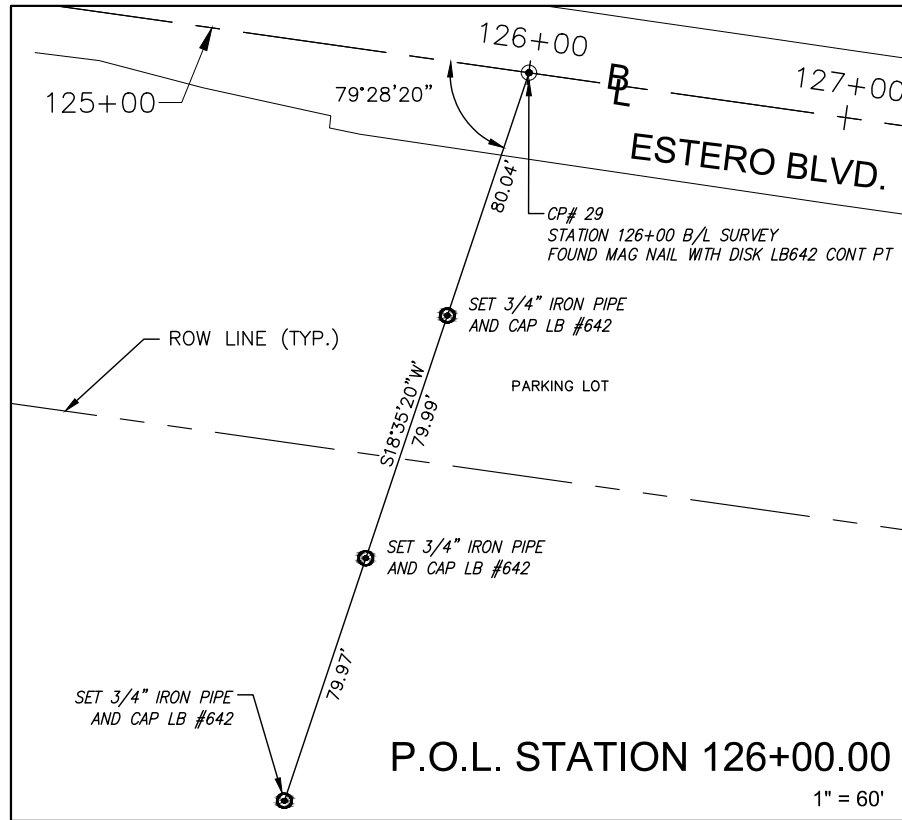
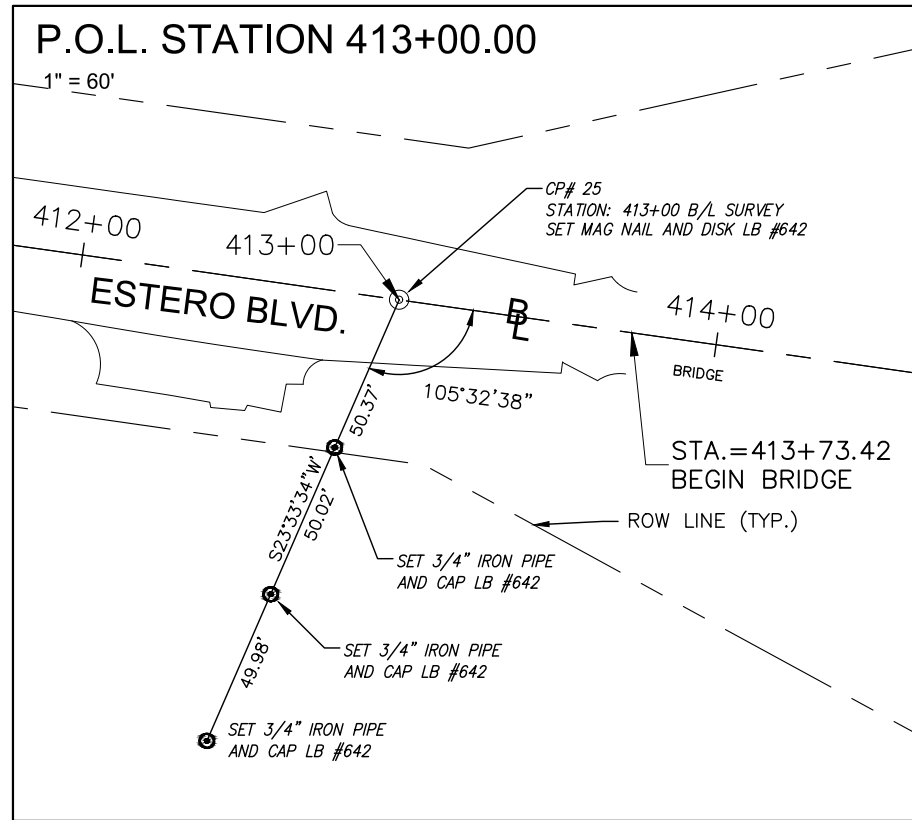
RICHARD G. DANIELS  
PROFESSIONAL SURVEYOR AND MAPPER  
FLORIDA CERTIFICATE NO. 7229  
JOHNSON ENGINEERING, INC.  
2122 JOHNSON STREET  
FORT MYERS, FLORIDA 33901  
PHONE: (239) 334-0046

LEE COUNTY DEPARTMENT OF TRANSPORTATION		
ROAD NO.	COUNTY	CONTRACT NO.
CR 865	LEE	CN16-0002

**PROJECT CONTROL SURVEY  
BIG CARLOS PASS BRIDGE**  
SECTION 3, TOWNSHIP 47 SOUTH, RANGE 24 EAST  
LEE COUNTY, FLORIDA

SHEET  
NO.  
CTL - 2

NOTICE: THE OFFICIAL RECORD OF THIS SHEET IS THE ELECTRONIC FILE DIGITALLY SIGNED AND SEALED UNDER RULE 5J-17.062, F.A.C.



PREPARED BY:  
JOHNSON ENGINEERING, INC.  
JEI PROJECT #20160355-001

REVISIONS			
DATE	DESCRIPTION	DATE	DESCRIPTION
12/13/2021	REVISED PER COMMENTS		

RICHARD G. DANIELS  
PROFESSIONAL SURVEYOR AND MAPPER  
FLORIDA CERTIFICATE NO. 7229  
JOHNSON ENGINEERING, INC.  
2122 JOHNSON STREET  
FORT MYERS, FLORIDA 33901  
PHONE: (239) 334-0046

LEE COUNTY DEPARTMENT OF TRANSPORTATION		
ROAD NO.	COUNTY	CONTRACT NO.
CR 865	LEE	CN16-0002

PROJECT CONTROL SURVEY  
BIG CARLOS PASS BRIDGE  
SECTION 3, TOWNSHIP 47 SOUTH, RANGE 24 EAST  
LEE COUNTY, FLORIDA

SHEET NO.  
CTL - 3

NOTICE: THE OFFICIAL RECORD OF THIS SHEET IS THE ELECTRONIC FILE DIGITALLY SIGNED AND SEALED UNDER RULE 5J-17.062, F.A.C.