

*LEE COUNTY BOARD OF
COUNTY COMMISSIONERS*

*PUBLIC WORKS ADMINISTRATION
DEPARTMENT OF TRANSPORTATION
CONTRACT PLANS
PLANS OF PROPOSED*

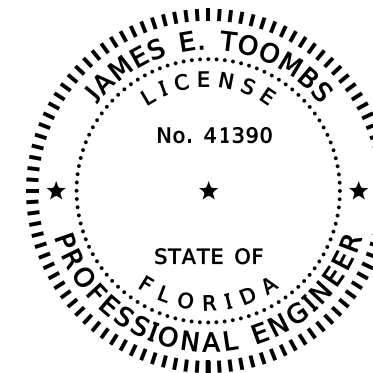
*SUMMERLIN ROAD / WINKLER ROAD
INTERSECTION IMPROVEMENTS*

COUNTY PROJECT NO. 6211

SIGNING AND PAVEMENT MARKING PLANS

INDEX OF SIGNING & PAVEMENT MARKING PLANS

SHEET NO.	SHEET DESCRIPTION
S-1	KEY SHEET
S-2	TABULATION OF QUANTITIES
S-3	GENERAL NOTES
S-4 TO S-7	PLAN SHEETS



THIS DOCUMENT HAS BEEN DIGITALLY SIGNED AND SEALED BY:

PRINTED COPIES OF THIS DOCUMENT ARE NOT CONSIDERED SIGNED AND SEALED. THE SIGNATURE MUST BE VERIFIED ON THE ELECTRONIC DOCUMENTS.

**SIGNING AND PAVEMENT MARKING PLANS
ENGINEER OF RECORD:**

JAMES E. TOOMBS, P.E.
P.E. NO.: 41390
AIM ENGINEERING & SURVEYING, INC.
3802 CORPOREX PARK DRIVE, STE. 225
TAMPA, FLORIDA 33619
TELEPHONE (888) 627-4144
CONTRACT NO. CN-12-13
VENDOR NO. F650197775003
CERTIFICATE OF AUTHORIZATION NO. 3114

LEE COUNTY PROJECT MANAGER:
LEE C. WERST

FISCAL YEAR	SHEET NO.
19	S-1

THE OFFICIAL RECORD OF THIS SHEET IS THE ELECTRONIC FILE DIGITALLY SIGNED AND SEALED UNDER RULE 61G15-23.004, F.A.C.

TABULATION OF QUANTITIES

PAY ITEM NO.	DESCRIPTION	UNIT	SHEET NUMBERS												TOTAL THIS SHEET		GRAND TOTAL	
			S-4		S-5		S-6		S-7									
			PLAN	FINAL	PLAN	FINAL	PLAN	FINAL	PLAN	FINAL	PLAN	FINAL	PLAN	FINAL	PLAN	FINAL	PLAN	FINAL
0700-1-11	SINGLE POST SIGN, F&I, GROUND MOUNT, UP TO 12 SF	AS			1				2								3	3
0700-1-12	SINGLE POST SIGN, F&I, GROUND MOUNT, 12-20 SF	AS			1		1										2	2
0700-1-50	SINGLE POST SIGN, RELOCATE	AS	1		2												3	3
0700-1-60	SINGLE POST SIGN, REMOVE	AS						1									1	1
0705-10-1	OBJECT MARKER, TYPE 1	EA			1												1	1
0706-3	RETRO-REFLECTIVE PAVEMENT MARKERS	EA	49		64		87		45								245	245
0710-11-290	ISLAND NOSE PAINT, YELLOW	SF			6												6	6
0711-11-123	THERMOPLASTIC, STANDARD, WHITE, SOLID, 12" FOR CROSSWALK AND ROUNDABOUT	LF			1023												1023	1023
0711-11-124	THERMOPLASTIC, STANDARD, WHITE, SOLID, 18" FOR DIAGONALS AND CHEVRONS	LF			41		211										252	252
0711-11-125	THERMOPLASTIC, STANDARD, WHITE, SOLID, 24" FOR STOP LINE AND CROSSWALK	LF			152												152	152
0711-11-141	THERMOPLASTIC, STANDARD, WHITE, 2-4 DOTTED GUIDELINE, 6"	GM	0.030		0.043		0.039										0.112	0.112
0711-11-160	THERMOPLASTIC, STANDARD, WHITE, MESSAGE	EA			2				1								3	3
0711-11-170	THERMOPLASTIC, STANDARD, WHITE, ARROW	EA	7		11		7		5								30	30
0711-11-224	THERMOPLASTIC, STANDARD, YELLOW, SOLID, 18" FOR DIAGONALS AND CHEVRONS	LF			6				23								29	29
0711-11-241	THERMOPLASTIC, STANDARD, YELLOW, 2-4 DOTTED GUIDELINE, 6"	GM			0.124												0.124	0.124
0711-14-160	THERMOPLASTIC, PREFORMED, WHITE, MESSAGE	EA	1		1		1										3	3
0711-14-170	THERMOPLASTIC, PREFORMED, WHITE, ARROW	EA	1		1		1										3	3
0711-16-101	THERMOPLASTIC, STANDARD-OTHER SURFACES, WHITE, SOLID, 6"	GM	0.257		0.233		0.209		0.148								0.847	0.847
0711-16-102	THERMOPLASTIC, STANDARD-OTHER SURFACES, WHITE, SOLID, 8"	GM			0.065		0.123										0.188	0.188
0711-16-131	THERMOPLASTIC, STANDARD-OTHER SURFACES, WHITE, SKIP, 10-30, 6"	GM			0.028		0.143		0.092								0.263	0.263
0711-16-201	THERMOPLASTIC, STANDARD-OTHER SURFACES, YELLOW, SOLID, 6"	GM	0.071		0.148		0.082		0.145								0.446	0.446

NO.	DATE	BY	REVISIONS - DESCRIPTION

AIM ENGINEERING & SURVEYING, INC.
 3802 CORPOREX PARK DRIVE STE. 225
 TAMPA, FLORIDA 33619
 TELEPHONE (888) 627-4144
 FAX (813) 664-1899
 CERTIFICATE OF AUTHORIZATION NO. 3114

APPROVED BY:
JAMES E. TOOMBS, P.E.
 REGISTERED PROFESSIONAL ENGINEER
 FLORIDA CERTIFICATE NO. 41390

PUBLIC WORKS DEPARTMENT
 LEE COUNTY of TRANSPORTATION
 SOUTHWEST FLORIDA
 1500 MONROE STREET FORT MYERS, FLORIDA 33901
 (239) 479-8900

TABULATION OF QUANTITIES


SHEET NO.
S-2

THE OFFICIAL RECORD OF THIS SHEET IS THE ELECTRONIC FILE DIGITALLY SIGNED AND SEALED UNDER RULE 61G15-23.004, F.A.C.

SIGNING AND PAVEMENT MARKING GENERAL NOTES

1. ALL FLORIDA ROUTE MARKERS MUST CONFORM TO FDOT DESIGN STANDARDS INDEX No. 17355.
2. PAVEMENT MARKINGS SHOULD BE PLACED AS SHOWN IN THE PLANS AND THE APPROPRIATE FDOT STANDARD PLANS.
3. VERIFY THE LENGTH OF COLUMN SUPPORTS IN THE FIELD PRIOR TO FABRICATION.
4. REFER TO FDOT STANDARD PLANS. No. 706-001 FOR RETRO-REFLECTIVE PAVEMENT MARKER PLACEMENT DETAILS.
5. CAUTION SHOULD BE EXERCISED WHILE RELOCATING EXISTING SIGNS SO AS TO PREVENT DAMAGE TO THE SIGNS. IF THE SIGNS ARE DAMAGED BEYOND USE, AS DETERMINED BY THE ENGINEER, THEY SHALL BE REPLACED AT NO ADDITIONAL COMPENSATION.
6. THE SIGN LOCATIONS SHOWN ARE APPROXIMATE AND MAY REQUIRE FIELD ADJUSTMENT AS DIRECTED BY THE ENGINEER.
7. ALL ROUTE MARKER AUXILIARIES SHALL MATCH THE COLOR COMBINATION OF THE RESPECTIVE MARKER WHICH THEY SUPPLEMENT.
8. ANY EXISTING SIGN TO REMAIN THAT IS DISTURBED DURING CONSTRUCTION OR RELOCATED SHALL BE RESET TO CURRENT STANDARDS FOR HEIGHT, OFFSET, AND METHOD OF INSTALLATION. COST OF THIS WORK SHALL BE REFLECTED IN THE PAY ITEM No. 102-1 IN THE SUMMARY OF ROADWAY PAY ITEMS.
9. USE W-SHAPE STEEL POSTS FOR MULTI-POST SIGNS. ALL COLUMNS (POSTS) FOR SINGLE COLUMN SIGNS SHALL BE ALUMINUM ROUND TUBE.
10. ALL SINGLE COLUMN SIGNS WITHIN THE LIMITS OF CLEARING AND GRUBBING SHALL BE REMOVED UNLESS OTHERWISE NOTED IN THE PLANS. PAYMENT SHALL BE REFLECTED IN THE PAY ITEM No. 110-1-1 IN THE SUMMARY OF ROADWAY PAY ITEMS.
11. APPLY THERMOPLASTIC AS THE FINAL TRAFFIC STRIPES AND MARKINGS A MINIMUM OF 30 DAYS AFTER THE FIRST APPLICATION OF PAINT BUT PRIOR TO FINAL ACCEPTANCE OF THE PROJECT.

NO.	DATE	BY	REVISIONS - DESCRIPTION



AIM ENGINEERING & SURVEYING, INC.
 3802 CORPOREX PARK DRIVE STE. 225
 TAMPA, FLORIDA 33619
 TELEPHONE (888) 627-4144
 FAX (813) 664-1899
 CERTIFICATE OF AUTHORIZATION NO. 3114

APPROVED BY:
JAMES E. TOOMBS, P.E.
 REGISTERED PROFESSIONAL ENGINEER
 FLORIDA CERTIFICATE NO. 41390

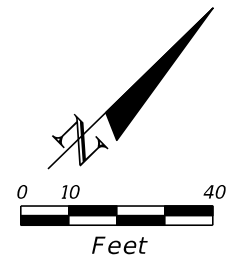
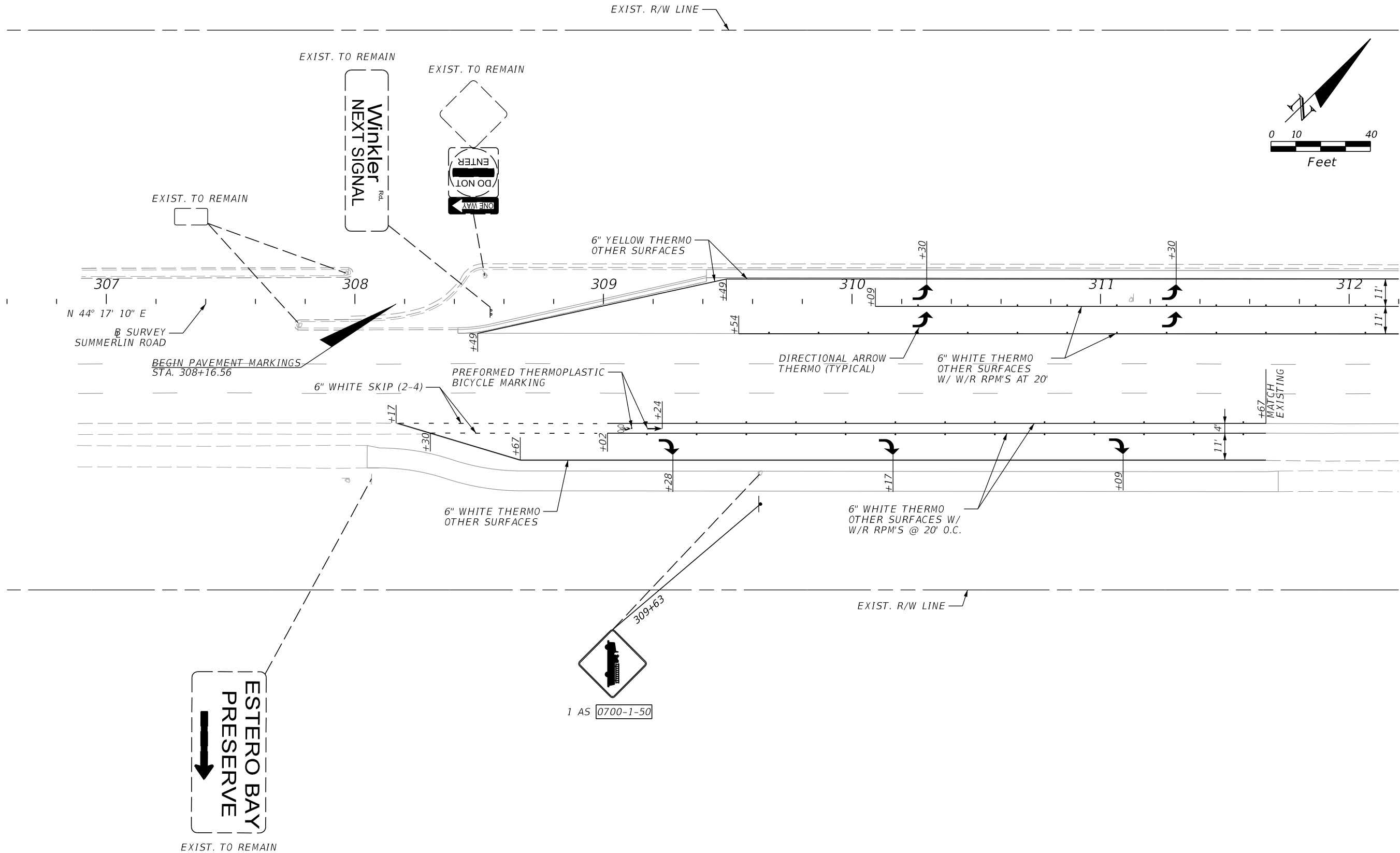


PUBLIC WORKS DEPARTMENT
 LEE COUNTY of
 SOUTHWEST FLORIDA TRANSPORTATION
 1500 MONROE STREET FORT MYERS, FLORIDA 33901
 (239) 479-8900


GENERAL NOTES

SHEET NO.
S-3


THE OFFICIAL RECORD OF THIS SHEET IS THE ELECTRONIC FILE DIGITALLY SIGNED AND SEALED UNDER RULE 61G15-23.004, F.A.C.



NO.	DATE	BY	REVISIONS - DESCRIPTION


AIM ENGINEERING & SURVEYING, INC.
 3802 CORPOREX PARK DRIVE STE. 225
 TAMPA, FLORIDA 33619
 TELEPHONE (888) 627-4144
 FAX (813) 664-1899
 CERTIFICATE OF AUTHORIZATION NO. 3114

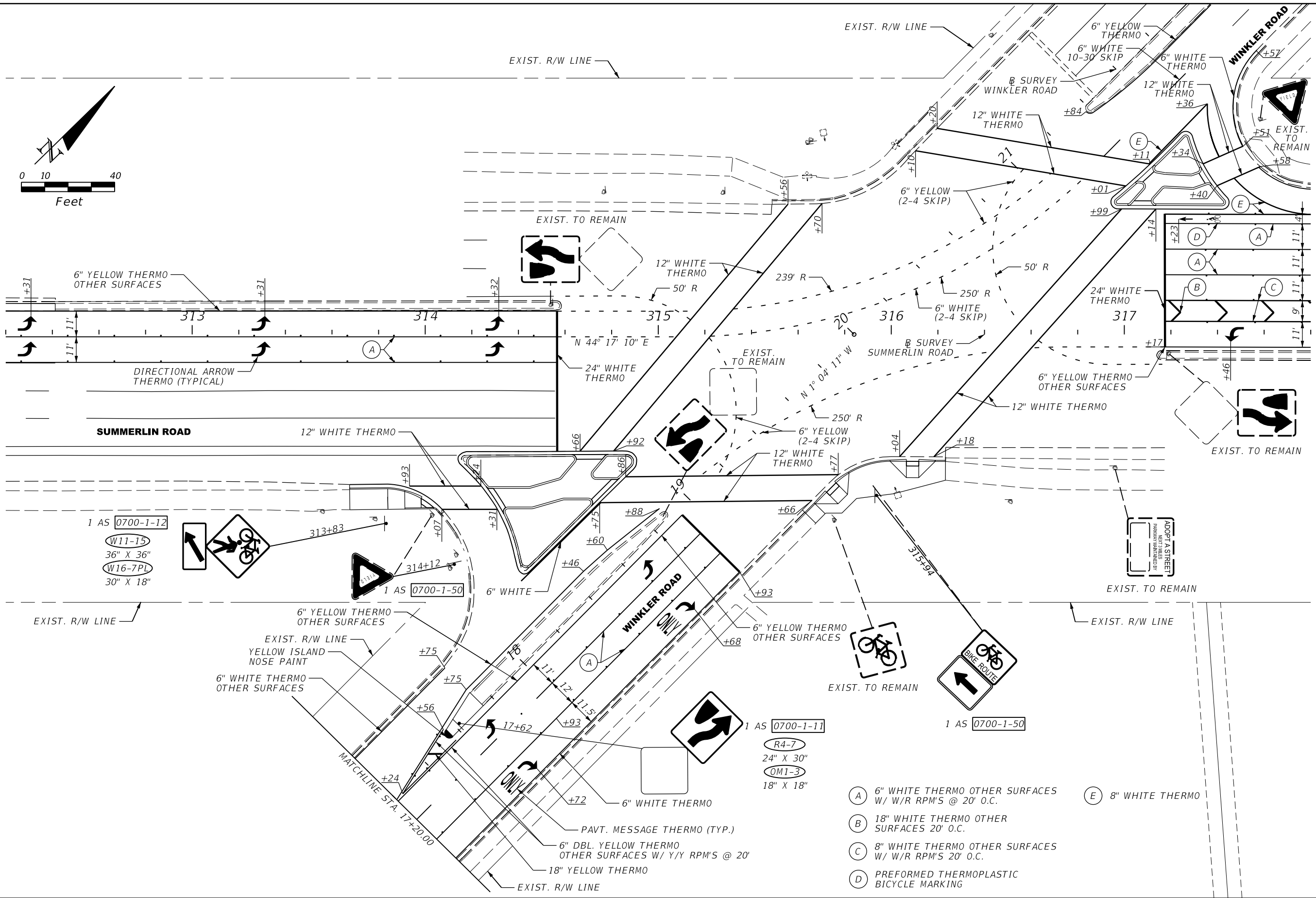
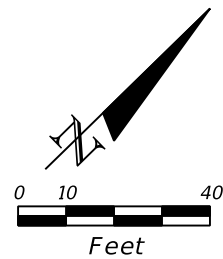
APPROVED BY:
JAMES E. TOOMBS, P.E.
 REGISTERED PROFESSIONAL ENGINEER
 FLORIDA CERTIFICATE NO. 41390


 PUBLIC WORKS
 LEE COUNTY
 S O U T H W E S T
 F L O R I D A
 1500 MONROE STREET
 FORT MYERS, FLORIDA 33901
 DEPARTMENT of TRANSPORTATION

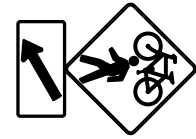
**SIGNING AND PAVEMENT
 MARKING PLANS**

SHEET NO.
S-4

THE OFFICIAL RECORD OF THIS SHEET IS THE ELECTRONIC FILE DIGITALLY SIGNED AND SEALED UNDER RULE 61G15-23.004, F.A.C.



- 1 AS 0700-1-12
- (W11-15)
- 36" X 36"
- (W16-7PL)
- 30" X 18"



- 1 AS 0700-1-50

- 1 AS 0700-1-11
- (R4-7)
- 24" X 30"
- (OM1-3)
- 18" X 18"

- 1 AS 0700-1-50

- (A) 6" WHITE THERMO OTHER SURFACES W/ W/R RPM'S @ 20' O.C.
- (B) 18" WHITE THERMO OTHER SURFACES 20' O.C.
- (C) 8" WHITE THERMO OTHER SURFACES W/ W/R RPM'S 20' O.C.
- (D) PREFORMED THERMOPLASTIC BICYCLE MARKING
- (E) 8" WHITE THERMO

NO.	DATE	BY	REVISIONS - DESCRIPTION

AIM ENGINEERING & SURVEYING, INC.
 3802 CORPOREX PARK DRIVE STE. 225
 TAMPA, FLORIDA 33619
 TELEPHONE (888) 627-4144
 FAX (813) 664-1899
 CERTIFICATE OF AUTHORIZATION NO. 3114

APPROVED BY:
JAMES E. TOOMBS, P.E.
 REGISTERED PROFESSIONAL ENGINEER
 FLORIDA CERTIFICATE NO. 41390

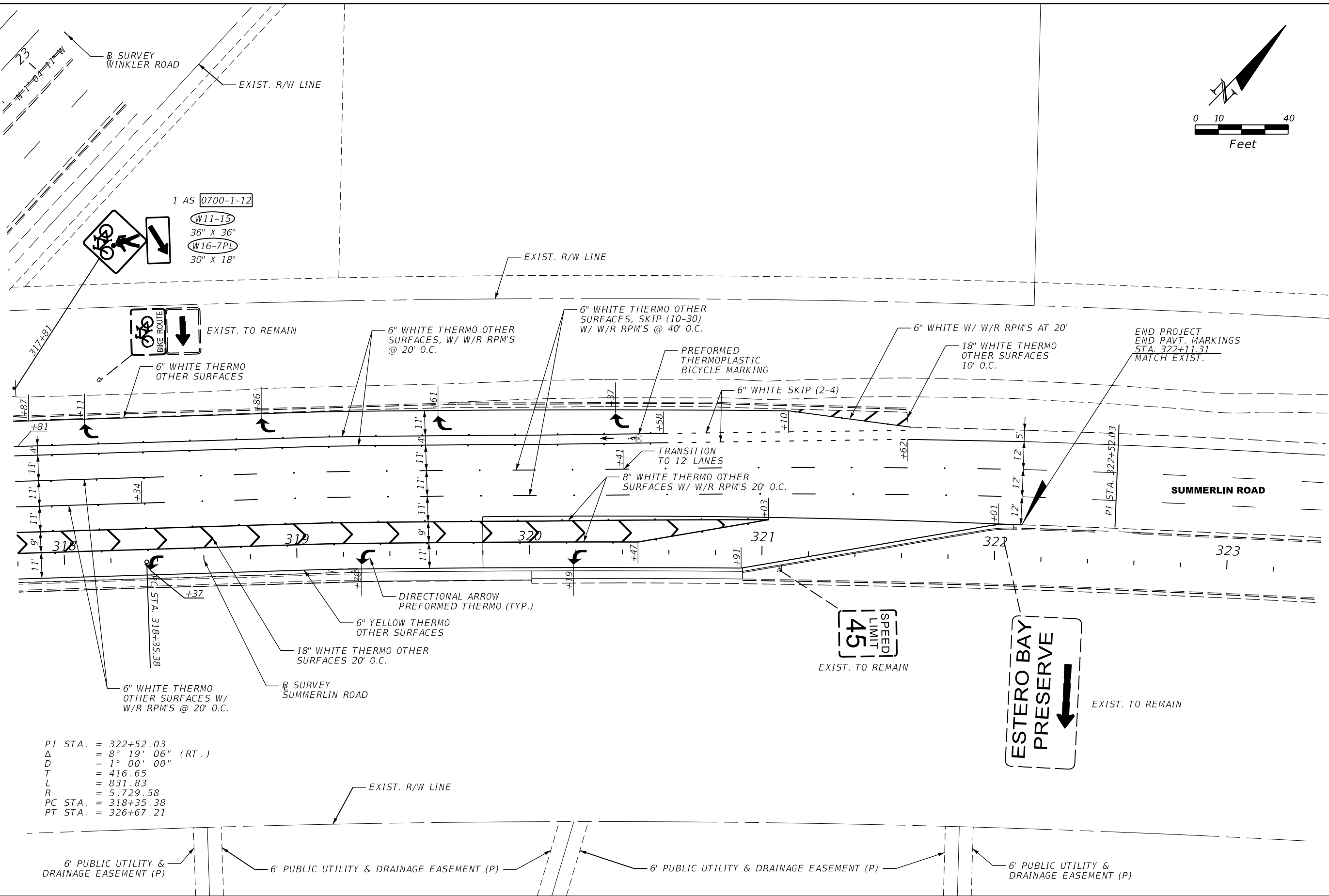
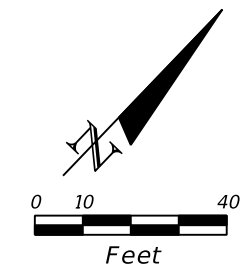
PUBLIC WORKS
 LEE COUNTY
 S O U T H W E S T
 F L O R I D A
 1500 MONROE STREET
 (239) 479-8900

DEPARTMENT
 of
 TRANSPORTATION
 FORT MYERS, FLORIDA 33901

**SIGNING AND PAVEMENT
 MARKING PLANS**

SHEET NO.
S-5

THE OFFICIAL RECORD OF THIS SHEET IS THE ELECTRONIC FILE DIGITALLY SIGNED AND SEALED UNDER RULE 61G15-23.004, F.A.C.



PI STA. = 322+52.03
 Δ = 8° 19' 06" (RT.)
 D = 1° 00' 00"
 T = 416.65
 L = 831.83
 R = 5,729.58
 PC STA. = 318+35.38
 PT STA. = 326+67.21

NO.	DATE	BY	REVISIONS - DESCRIPTION

AIM ENGINEERING & SURVEYING, INC.
 3802 CORPOREX PARK DRIVE STE. 225
 TAMPA, FLORIDA 33619
 TELEPHONE (888) 627-4144
 FAX (813) 664-1899
 CERTIFICATE OF AUTHORIZATION NO. 3114

APPROVED BY:
JAMES E. TOOMBS, P.E.
 REGISTERED PROFESSIONAL ENGINEER
 FLORIDA CERTIFICATE NO. 41390

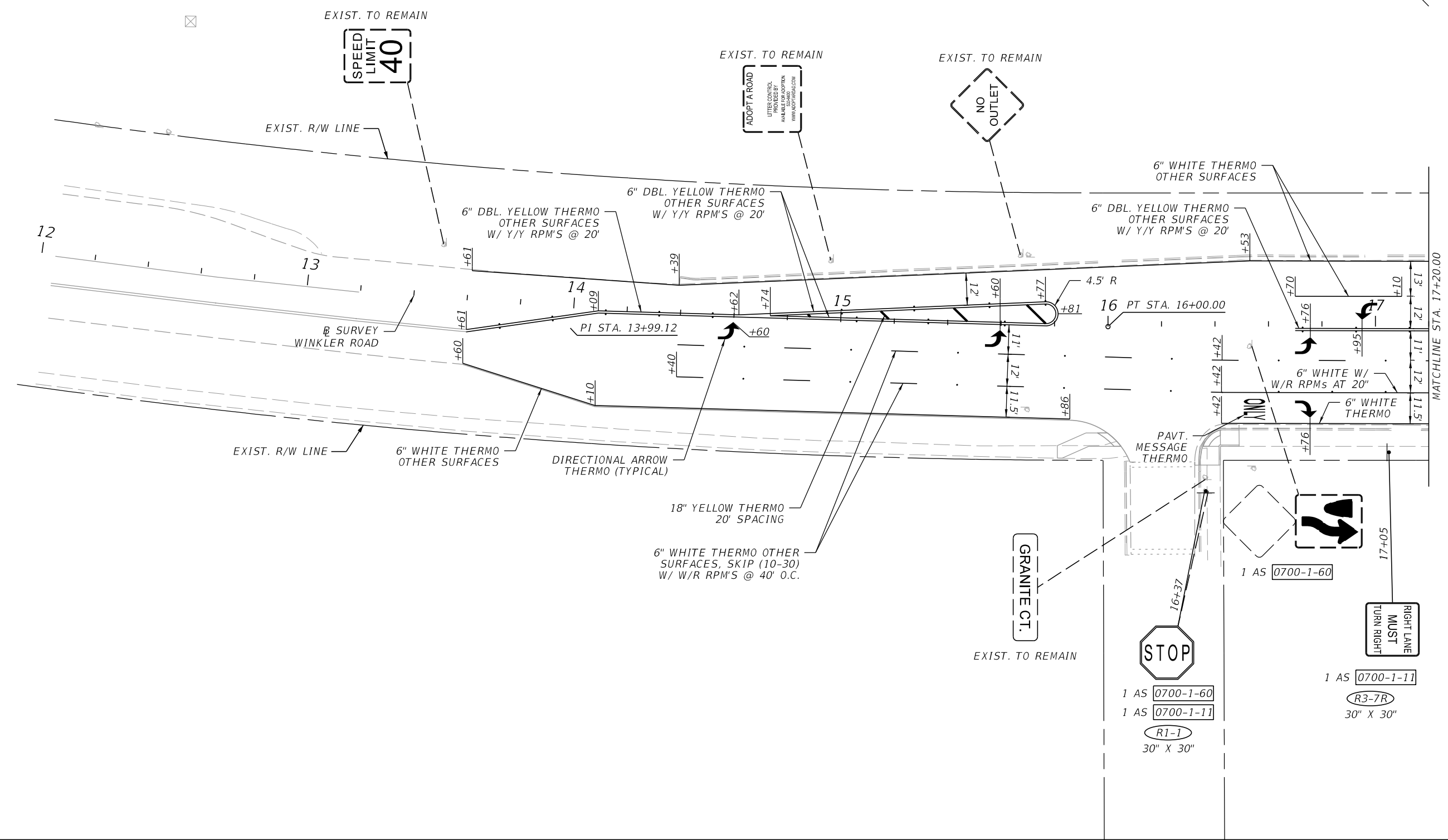
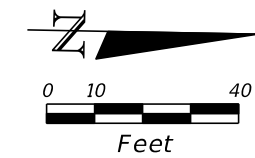
PUBLIC WORKS
LEE COUNTY
 S O U T H W E S T
 F L O R I D A
 1500 MONROE STREET
 (239) 479-8900

DEPARTMENT
 of
TRANSPORTATION
 FORT MYERS, FLORIDA 33901

**SIGNING AND PAVEMENT
 MARKING PLANS**

SHEET NO.
S-6

THE OFFICIAL RECORD OF THIS SHEET IS THE ELECTRONIC FILE DIGITALLY SIGNED AND SEALED UNDER RULE 61G15-23.004, F.A.C.



THE OFFICIAL RECORD OF THIS SHEET IS THE ELECTRONIC FILE DIGITALLY SIGNED AND SEALED UNDER RULE 61G15-23.004, F.A.C.

NO.	DATE	BY	REVISIONS - DESCRIPTION

AIM ENGINEERING & SURVEYING, INC.
 3802 CORPOREX PARK DRIVE STE. 225
 TAMPA, FLORIDA 33619
 TELEPHONE (888) 627-4144
 FAX (813) 664-1899
 CERTIFICATE OF AUTHORIZATION NO. 3114

APPROVED BY:
JAMES E. TOOMBS, P.E.
 REGISTERED PROFESSIONAL ENGINEER
 FLORIDA CERTIFICATE NO. 41390

PUBLIC WORKS
 LEE COUNTY
 SOUTHWEST
 FLORIDA
 1500 MONROE STREET
 (239) 479-8900

DEPARTMENT
 of
 TRANSPORTATION
 FORT MYERS, FLORIDA 33901

SIGNING AND PAVEMENT MARKING PLANS

SHEET NO.
S-7