

WA-KE HATCHEE WEEK 1

IMPORTANT ANNOUNCEMENTS & REMINDERS

Southern Sno Balls on Friday **Cash only** \$3 and \$5
Make sure you check lost and found Every day!

**LOST &
FOUND**

**Monday
June 15th**

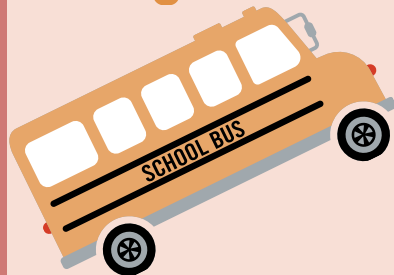


Announcements and
Icebreakers
Capture the flag



**Tuesday
June 16th**

Lakes Regional Library



**Wednesday
June 17th**

Calusa
BlueWay

**GUEST
SPEAKER**



**Thursday
June 18th**

Animal Tracking
Lesson/ Scavenger
Hike



**Friday
June 19th**



CAMPER OF THE
WEEK RAFFLE



- **Camp Hours** 7:30 a.m. - 6 p.m.
- Have questions? Refer to the "How to have a Perfect Week at Camp" document.
- Calendars are subject to change



CAMP DIRECTOR:

Stephen Cuffe | Scuffe@leegov.com

WA-KE HATCHEE MIDDLE SCHOOL CAMP

O: (239) 533-6850 C: (239) 841-7226

PERFECT WEEK AT MIDDLE CAMP

WA-KE HATCHEE WEEK #1

CAMPER DAILY'S

- Lunch
- Am/pm snack
- SUNSCREEN
 - (Don't let the sun win!)
- Bug spray
- Refillable Water bottle to stay cool & hydrated
- Closed toed shoes
- Wednesday require a swim suit, and a change of clothes and a towel

GUARDIAN DAILY'S

- Please make sure your supplemental form is completed before the first day
- Photo ID is required at sign out
- Phones & electronics are not Allowed
- Campers Will have access to the center phone

CAMP HOURS

- Monday- Friday 7:30 a.m. - 6 p.m.
- Morning Snack: 9:45 a.m.
- Lunch 12:30 p.m.-1:30 p.m.
- Afternoon Snack 4:15 p.m.

SPECIAL EVENTS

- Summer Camp Theme: Under the SEA
- Welcome Party First Day of Camp
- Field Trip to Lakes Regional Library on Tuesday, June 16!
- Guest Speaker: Mike Hammond on Wednesday, June 17!
- Snow Cone Money due THURSDAY

GUEST SPEAKERS

- Mike Hammond w/ Calusa BlueWay

REMINDERS

- Check lost and found
- Write campers names on All items
- Sno Cones are cash only \$3 \$5



CAMPER SIGN-IN/OUT POLICY

A parent or guardian is required to sign in and sign out each camper daily. Only people who have previously been listed on the Supplemental Information Sheet will be permitted to sign for your child at pick up. Photo ID will be required. Changes must be submitted in writing.

WA-KE HATCHEE WEEK 2



IMPORTANT ANNOUNCEMENTS & REMINDERS

Sothern Sno Balls on Friday **Cash Only** \$3 and \$5
Make sure you check lost and found Every day!

LOST & FOUND

Monday
June 22nd

Wacky sock Day



Announcements and
Icebreakers

Tuesday
June 23rd

Hat Day

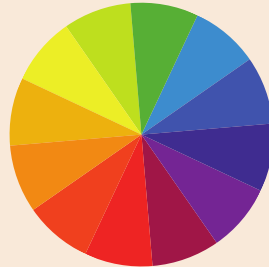


New World Self
Defense presentation



Wednesday
June 24th

Neon Day



Field Trip to Spinz



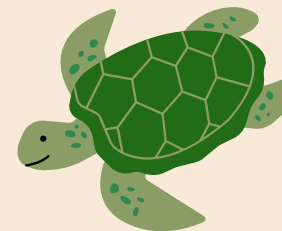
Thursday
June 25th

Jersey day



SCCF

GUEST
SPEAKER



Friday
June 26th

Pajama day



CAMPER OF THE
WEEK RAFFLE

- **Camp Hours** 7:30 a.m. - 6 p.m.
- Have questions? Refer to the "How to have a Perfect Week at Camp" document.
- Calendars are subject to change



CAMP DIRECTOR:

Stephen Cuffe | Scuffe@leegov.com

WA-KE HATCHEE MIDDLE SCHOOL CAMP

O: (239) 533-6850 C: (239) 841-7226

PERFECT WEEK AT MIDDLE CAMP

WA-KE HATCHEE WEEK #2

CAMPER DAILY'S

- Lunch
- Am/pm snack
- SUNSCREEN
 - (Don't let the sun win!)
- Bug spray
- Refillable Water bottle to stay cool & hydrated
- Closed toed shoes
- Wednesday require a swim suit, and a change of clothes and a towel

GUARDIAN DAILY'S

- Please make sure your supplemental form is completed before the first day
- Photo ID is required at sign out
- Phones & electronics are not Allowed
- Campers Will have access to the center phone

CAMP HOURS

- Monday- Friday 7:30 a.m. - 6 p.m.
- Morning Snack: 9:45 a.m.
- Lunch 12:30 p.m.-1:30 p.m.
- Afternoon Snack 4:15 p.m.

SPECIAL EVENTS

- ALL CAMP FIELD TRIP: Spinz on Wednesday, June 24 Campers arrive by 9:00am
- Wear your camp shirt!
- We will leave at 9:00a.m. sharp!
- Please bring a lunch!
- NO WATER DAY THIS WEEK!
- SPIRIT WEEK

GUEST SPEAKERS

- New World Self Defense

REMINDERS

- Its Spirt week! check the camp Check dailey to see whats to wear
- Lost and found
- Write campers names on items
- Sno Cones are cash only \$3 \$5

CAMPER SIGN-IN/OUT POLICY

A parent or guardian is required to sign in and sign out each camper daily. Only people who have previously been listed on the Supplemental Information Sheet will be permitted to sign for your child at pick up. Photo ID will be required. Changes must be submitted in writing.



WA-KE HATCHEE WEEK 3

IMPORTANT ANNOUNCEMENTS & REMINDERS

Sothern Sno Balls on Thursday **Cash only** \$3 and \$5
 Make Sure you check lost and found Every day!

LOST & FOUND

**Monday
June 29th**

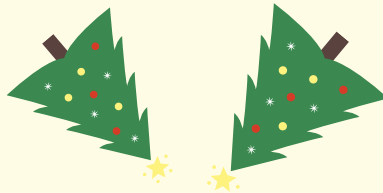
Announcements and
Icebreakers



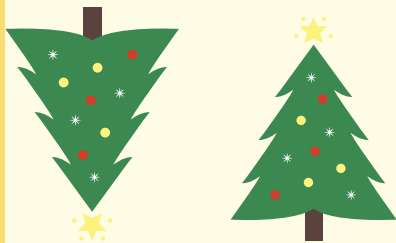
Wear your Favorite
Halloween Costume



**Tuesday
June 30th**

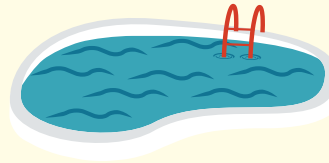


Wear your Favorite
Holiday Outfit



**Wednesday
July 1st**

Pool Day



Wear your Favorite
Easter Outfit



**Thursday
July 2nd**



Happy 4th of July!

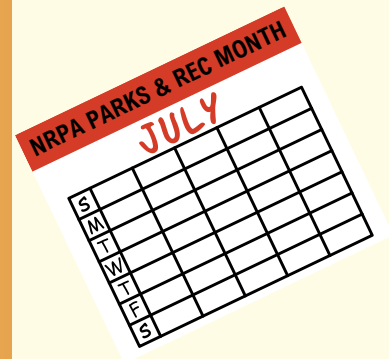
Wear red, White and
Blue



CAMPER OF THE
WEEK RAFFLE

**Friday
July 3rd**

No
Camp



- **Camp Hours** 7:30 a.m. - 6 p.m.
- Have questions? Refer to the "How to have a Perfect Week at Camp" document.
- Calendars are subject to change



CAMP DIRECTOR:

Stephen Cuffe | Scuffe@leegov.com

WA-KE HATCHEE MIDDLE SCHOOL CAMP

O: (239) 533-6850 C: (239) 841-7226

PERFECT WEEK AT MIDDLE CAMP

WA-KE HATCHEE WEEK #3

CAMPER DAILY'S

- Lunch
- Am/pm snack
- SUNSCREEN
 - (Don't let the sun win!)
- Bug spray
- Refillable Water bottle to stay cool & hydrated
- Closed toed shoes
- Wednesday require a swim suit, and a change of clothes and a towel

GUARDIAN DAILY'S

- Please make sure your supplemental form is completed before the first day
- Photo ID is required at sign out
- Phones & electronics are not Allowed
- Campers Will have access to the center phone

CAMP HOURS

- Monday- Thursday 7:30 a.m. - 6 p.m.
- Morning Snack: 9:45 a.m.
- Lunch 12:30 p.m.-1:30 p.m.
- Afternoon Snack 4:15 p.m.

SPECIAL EVENTS

- **Water Day on Wednesday**
 - Bring a towel, swimsuit, change of clothes, sunscreen, and water shoes
 - Pool Day
- **Holiday Week**
 - Halloween
 - Christmas
 - Easter
 - Fourth of July

REMINDERS

- Its Holiday Week Check the Camp calander to see what to wear
- Check lost and found
- Write campers names on all items
- Sno Cones are cash only \$3 \$5
- **NO CAMP FRIDAY, JULY 3**
 - **Happy Fourth of July!**



CAMPER SIGN-IN/OUT POLICY

A parent or guardian is required to sign in and sign out each camper daily. Only people who have previously been listed on the Supplemental Information Sheet will be permitted to sign for your child at pick up. Photo ID will be required. Changes must be submitted in writing.

WA-KE HATCHEE WEEK 4

IMPORTANT ANNOUNCEMENTS & REMINDERS

Sothern Sno Balls on Friday \$3 and \$5
Make Sure you check lost and found Every day!

**LOST &
FOUND**

Monday
July 6th



Announcements and
Icebreaker Games
Tug o war!

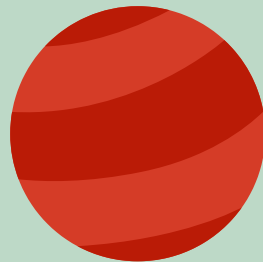


Tuesday
July 7th

Ranger Presentation



Vampire Kickball



Wednesday
July 8th

Pool Day

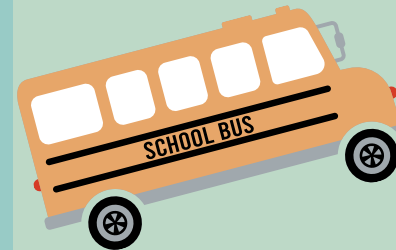


Game Room Fun!



Thursday
July 9th

Sky Zone!



Friday
July 10th



CAMPER OF THE
WEEK RAFFLE

- **Camp Hours** 7:30 a.m. - 6 p.m.
- Have questions? Refer to the "How to have a Perfect Week at Camp" document.
- Calendars are subject to change



CAMP DIRECTOR:

Stephen Cuffe | Scuffe@leegov.com

WA-KE HATCHEE MIDDLE SCHOOL CAMP

O: (239) 533-6850 C: (239) 841-7226

PERFECT WEEK AT MIDDLE CAMP

WA-KE HATCHEE WEEK #4

CAMPER DAILY'S

- Lunch
- Am/pm snack
- SUNSCREEN
 - (Don't let the sun win!)
- Bug spray
- Refillable Water bottle to stay cool & hydrated
- Closed toed shoes
- Wednesday require a swim suit, and a change of clothes and a towel

GUARDIAN DAILY'S

- Please make sure your supplemental form is completed before the first day
- Photo ID is required at sign out
- Phones & electronics are not Allowed
- Campers Will have access to the center phone

CAMP HOURS

- Monday- Friday 7:30 a.m. - 6 p.m.
- Morning Snack: 9:45 a.m.
- Lunch 12:30 p.m.-1:30 p.m.
- Afternoon Snack 4:15 p.m.

SPECIAL EVENTS

- **Water Day on Wednesday**
 - Bring a towel, swimsuit, change of clothes, sunscreen, and water shoes
 - Pool Day
- **ALL CAMP FIELD TRIP:** Skyzone Trampoline Park on Thursday, July 9!
 - Wear your camp shirt
 - **We will leave at 8:15 a.m. sharp!**

GUEST SPEAKERS

- Ranger Presentation

REMINDERS

- Check lost and found
- Write campers names on items
- Sno Cones are cash only \$3 \$5



CAMPER SIGN-IN/OUT POLICY

A parent or guardian is required to sign in and sign out each camper daily. Only people who have previously been listed on the Supplemental Information Sheet will be permitted to sign for your child at pick up. Photo ID will be required. Changes must be submitted in writing.

WA-KE HATCHEE WEEK 5

IMPORTANT ANNOUNCEMENTS & REMINDERS

Sothern Sno Balls on Friday **Cash only** \$3 and \$5
Make Sure you check lost and found Every day!

**LOST &
FOUND**

Monday
July 13th



Announcements and
Icebreaker Games

Field Trip to public safety



Tuesday
July 14th

Field Day



Field Trip to public safety

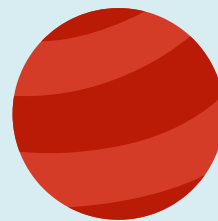


Wednesday
July 15th

Pool Day



Dodgeball



Thursday
July 16th

Hanley
Foundation

**GUEST
SPEAKER**

Science Fair!



Friday
July 17th



CAMPER OF THE
WEEK RAFFLE

- **Camp Hours** 7:30 a.m. - 6 p.m.
- Have questions? Refer to the "How to have a Perfect Week at Camp" document.
- Calendars are subject to change



CAMP DIRECTOR:
Stephen Cuffe | Scuffe@leegov.com

WA-KE HATCHEE MIDDLE SCHOOL CAMP
O: (239) 533-6850 C: (239) 841-7226

PERFECT WEEK AT MIDDLE CAMP

WA-KE HATCHEE WEEK #5

CAMPER DAILY'S

- Lunch
- Am/pm snack
- SUNSCREEN
 - (Don't let the sun win!)
- Bug spray
- Refillable Water bottle to stay cool & hydrated
- Closed toed shoes
- Wednesday require a swim suit, and a change of clothes and a towel

GUARDIAN DAILY'S

- Please make sure your supplemental form is completed before the first day
- Photo ID is required at sign out
- Phones & electronics are not Allowed
- Campers Will have access to the center phone

CAMP HOURS

- Monday- Friday 7:30 a.m. - 6 p.m.
- Morning Snack: 9:45 a.m.
- Lunch 12:30 p.m.-1:30 p.m.
- Afternoon Snack 4:15 p.m.

SPECIAL EVENTS

- **Water Day on Wednesday**
 - Bring a towel, swimsuit, change of clothes, sunscreen, and water shoes
 - Pool Day
- **Thursday, July 16th**
 - Science Project Display
 - 4:30 p.m. - 6:30 p.m.
- **Feild trip to the EOC**
- Monday and Tuesday
- 130 p.m. - 3 p.m.
-

GUEST SPEAKERS

- Hanley Foundation

REMINDERS

- Check lost and found
- Write campers names on items
- Sno Cones are cash only \$3 \$5



CAMPER SIGN-IN/OUT POLICY

A parent or guardian is required to sign in and sign out each camper daily. Only people who have previously been listed on the Supplemental Information Sheet will be permitted to sign for your child at pick up. Photo ID will be required. Changes must be submitted in writing.

WA-KE HATCHEE WEEK 6

IMPORTANT ANNOUNCEMENTS & REMINDERS

Sothern Sno Balls on Friday **Cash only** \$3 and \$5
 Make Sure you check lost and found Every day!

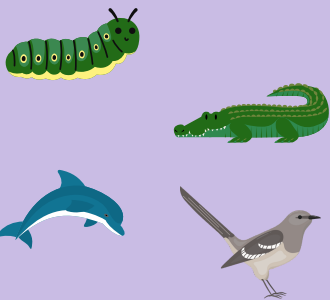
LOST & FOUND

Monday
 July 20th

Announcements and
 Icebreaker Games



Parks Matching Game



Tuesday
 July 21st



Tug o war

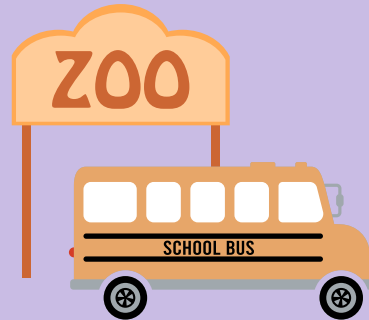


Dodge Ball



Wednesday
 July 22th

Naples Zoo



Animal Dioramas



Thursday
 July 23rd

Hanley
 Foundation

**GUEST
 SPEAKER**

Clean Up the Park
 Expedition!



Friday
 July 24th



**CAMPER OF THE
 WEEK RAFFLE**

- **Camp Hours** 7:30 a.m. - 6 p.m.
- Have questions? Refer to the "How to have a Perfect Week at Camp" document.
- Calendars are subject to change



CAMP DIRECTOR:

Stephen Cuffe | Scuffe@leegov.com

WA-KE HATCHEE MIDDLE SCHOOL CAMP

O: (239) 533-6850 C: (239) 841-7226

PERFECT WEEK AT MIDDLE CAMP

WA-KE HATCHEE WEEK #6

CAMPER DAILY'S

- Lunch
- Am/pm snack
- SUNSCREEN
 - (Don't let the sun win!)
- Bug spray
- Refillable Water bottle to stay cool & hydrated
- Closed toed shoes
- Wednesday require a swim suit, and a change of clothes and a towel

GUARDIAN DAILY'S

- Please make sure your supplemental form is completed before the first day
- Photo ID is required at sign out
- Phones & electronics are not Allowed
- Campers Will have access to the center phone

CAMP HOURS

- Monday- Friday 7:30 a.m. - 6 p.m.
- Morning Snack: 9:45 a.m.
- Lunch 12:30 p.m.-1:30 p.m.
- Afternoon Snack 4:15 p.m.

SPECIAL EVENTS

- Monday Group 1 & 2 FGCU Wet walk
- Tuesday Group 2 & 3 FGCU wet walk
- **ALL CAMP FIELD TRIP:** Naples Zoo on Wednesday, July 22!
 - Wear your camp shirt
 - **We will leave at 9:15 a.m. sharp!**
- Snow Cones Every Friday, Money due on THURSDAY

GUEST SPEAKERS

- Hanley Foundation

REMINDERS

- Check lost and found
- Write campers names on items
- Sno Cones are cash only \$3 \$5



CAMPER SIGN-IN/OUT POLICY

A parent or guardian is required to sign in and sign out each camper daily. Only people who have previously been listed on the Supplemental Information Sheet will be permitted to sign for your child at pick up. Photo ID will be required. Changes must be submitted in writing.

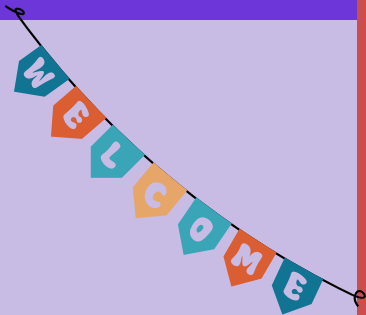
WA-KE HATCHEE WEEK 7

IMPORTANT ANNOUNCEMENTS & REMINDERS

Sothern Sno Balls on Friday **Cash Only** \$3 and \$5
Make Sure you check lost and found Every day!

**LOST &
FOUND**

**Monday
July 27th**



Announcements and
Icebreaker Games

**Tuesday
July 28th**

Campers Cup



Tie Dye

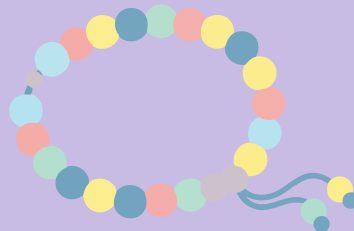


**Wednesday
July 29th**

Pool Day



Necklace and Bracelet
Bead Making

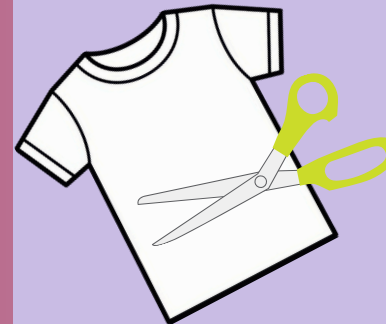


**Thursday
July 30th**

Hanley
Foundation

**GUEST
SPEAKER**

No-Sew T-shirt Bags



**Friday
July 31st**



**HAVE A
GREAT
SCHOOL
YEAR**

**CAMPER OF THE
WEEK RAFFLE**

- **Camp Hours** 7:30 a.m. - 6 p.m.
- Have questions? Refer to the "How to have a Perfect Week at Camp" document.
- Calendars are subject to change



CAMP DIRECTOR:

Stephen Cuffe | Scuffe@leegov.com

WA-KE HATCHEE MIDDLE SCHOOL CAMP

O: (239) 533-6850 C: (239) 841-7226

PERFECT WEEK AT MIDDLE CAMP

WA-KE HATCHEE WEEK #7

CAMPER DAILY'S

- Lunch
- Am/pm snack
- SUNSCREEN
 - (Don't let the sun win!)
- Bug spray
- Refillable Water bottle to stay cool & hydrated
- Closed toed shoes
- Wednesday require a swim suit, and a change of clothes and a towel

GUARDIAN DAILY'S

- Please make sure your supplemental form is completed before the first day
- Photo ID is required at sign out
- Phones & electronics are not Allowed
- Campers Will have access to the center phone

CAMP HOURS

- Monday- Friday 7:30 a.m. - 6 p.m.
- Morning Snack: 9:45 a.m.
- Lunch 12:30 p.m.-1:30 p.m.
- Afternoon Snack 4:15 p.m.

SPECIAL EVENTS

- **Water Day on Wednesday**
 - Bring a towel, swimsuit, change of clothes, sunscreen, and water shoes
 - Pool Day
- Snow Cones on Friday, Money due on THURSDAY

GUEST SPEAKERS

- Hanley Foundation

REMINDERS

- Check lost and found
- Write campers names on items
- Sno Cones are cash only \$3 \$5



CAMPER SIGN-IN/OUT POLICY

A parent or guardian is required to sign in and sign out each camper daily. Only people who have previously been listed on the Supplemental Information Sheet will be permitted to sign for your child at pick up. Photo ID will be required. Changes must be submitted in writing.