

WA-KE TRADITIONAL CAMP WEEK 1

IMPORTANT ANNOUNCEMENTS & REMINDERS

Under The Sea Week
Southern Snoballs on Friday! **Cash Only**; \$3, \$5, and \$6
Make sure you check the lost & found every day!

**Monday
June 15**

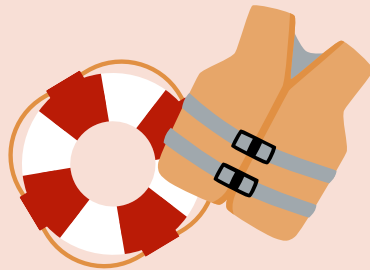
Welcome Party



Let's
Party

**Tuesday
June 16**

Water Safety Class
Water Day



**Wednesday
June 17**

Reptile Presentation
Jellyfish Making



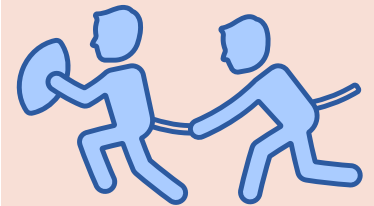
**Thursday
June 18**

Animal Tracking
Lesson/ Scavenger
Hike



**Friday
June 19**

Flag Football



Southern Snoballs



- **Camp Hours** 7:30 a.m. - 6 p.m.
- Have questions? Refer to the "How to have a Perfect Week at Camp" document.
- Calendars are subject to change



CAMP DIRECTOR:
Shanell Washington | SWashington@leegov.com
WA-KE HATCHEE REC CENTER TRADITIONAL CAMP
(239) 533-6850

PERFECT WEEK AT TRADITIONAL CAMP

WA-KE HATCHEE WEEK 1

CAMPER DAILY'S

- Lunch
- a.m./p.m. snack
- SUNSCREEN
- Bug spray
- Refillable Water Bottle
- Closed toed shoes (No crocs)

GUARDIAN DAILY'S

- Make sure to complete your Supplemental Form before Monday
- Phones and other electronics are not allowed
- Money for Sno cones on Thursday
- K-Second grade aged kids need to have an extra change of clothes packed with them DAILY in their backpack

CAMP HOURS

- Monday- Friday: 7:30 a.m.- 6 p.m.
- Morning Snack: 9:30 a.m.
- Lunch: 12:30 p.m. -1:30 p.m.
- Afternoon Snack: 3:15 p.m.

SPECIAL EVENTS

- **Summer Camp Theme: Under the SEA**
- **Welcome Party First Day of Camp**
- **Water Safety Class/Water Day on Tuesday, June 16!**
 - Bring a towel, swimsuit, change of clothes, sunscreen, and water shoes

GUEST SPEAKERS

- Tuesday
 - Water Safety Class
- Wednesday
 - Mike Hammond's Reptile Presentation
- Thursday
 - Ms. Amanda's Animal Tracking Lesson
- Friday
 - Scavenger Hike

REMINDERS

- Write your camper's names on their items
- Check Lost & Found every day!
- Southern Snowballs (snow cones)
 - Cash Only due Thursday: \$3, \$5, or \$6



CAMPER SIGN-IN/OUT POLICY

A parent or guardian is required to sign in and sign out each camper daily. Only people who have previously been listed on the Supplemental Information Sheet will be permitted to sign for your child at pick up. Photo ID will be required. Changes must be submitted in writing.

WA-KE TRADITIONAL CAMP WEEK 2

IMPORTANT ANNOUNCEMENTS & REMINDERS

Spirit Week

Southern Snoballs on Friday! **Cash Only**; \$3, \$5, and \$6

Make sure you check the lost & found every day!

Monday
June 22

Wacky Sock Day



Game Room Activities



Tuesday
June 23

Hat Day



LCEC Presentation



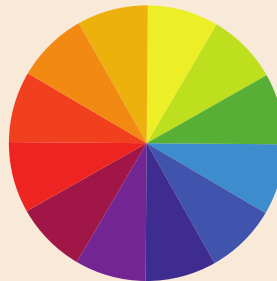
Wednesday
June 24

ALL CAMP FIELD
TRIP



SPINZ Roller Skating
9:15 a.m. - 12:45 p.m.

Neon Day



Thursday
June 25

Sports Jersey
Day



Friday
June 26

Pajama Day



Southern Snoballs



- **Camp Hours** 7:30 a.m. - 6 p.m.
- Have questions? Refer to the "How to have a Perfect Week at Camp" document.
- Calendars are subject to change



CAMP DIRECTOR:

Shanell Washington | SWashington@leegov.com

WA-KE HATCHEE REC CENTER TRADITIONAL CAMP

(239) 533-6850

PERFECT WEEK AT TRADITIONAL CAMP

WA-KE HATCHEE WEEK 2

CAMPER DAILY'S

- Lunch
- a.m./p.m. snack
- SUNSCREEN
- Bug spray
- Refillable Water Bottle
- Closed toed shoes (No crocs)

GUARDIAN DAILY'S

- Make sure to complete your Supplemental Form before Monday
- Phones and other electronics are not allowed
- Money for Sno cones on Thursday
- K-Second grade aged kids need to have an extra change of clothes packed with them DAILY in their backpack

CAMP HOURS

- Monday- Friday 7:30 a.m.- 6 p.m.
- Morning Snack: 9:30 a.m.
- Lunch 12:30 p.m. -1:30 p.m.
- Afternoon Snack 3:15 p.m.

SPECIAL EVENTS

- **ALL CAMP FIELD TRIP:** Spinz on **Wednesday, June 24** Campers arrive by 9 a.m.
 - Wear your camp shirt!
 - **We will leave at 9 a.m. sharp!**
 - Please bring a lunch!
- **NO WATER DAY THIS WEEK!**
- **SPIRIT WEEK**
 - Monday: Wacky Sock Day
 - Tuesday: Hat Day
 - Wednesday: Neon Day
 - Thursday: Sports Jersey Day
 - Friday: Pajama Day

GUEST SPEAKERS

- Tuesday
 - LCEC Presentation
- Thursday
 - SCCF Presentation

REMINDERS

- **It's Spirit Week**
 - **Check the Camp Calendar to see what to wear each day!**
- Write your camper's names on their items
- Check Lost & Found every day!
- Southern Snowballs (snow cones)
 - Cash Only; due Thursday: \$3, \$5, or \$6



CAMPER SIGN-IN/OUT POLICY

A parent or guardian is required to sign in and sign out each camper daily. Only people who have previously been listed on the Supplemental Information Sheet will be permitted to sign for your child at pick up. Photo ID will be required. Changes must be submitted in writing.

WA-KE TRADITIONAL CAMP WEEK 3

IMPORTANT ANNOUNCEMENTS & REMINDERS

Holiday Week

NO CAMP ON FRIDAY, JULY 3rd!

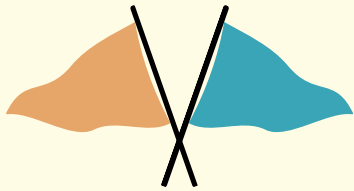
Southern Snoballs on Thursday! **Cash Only**; \$3, \$5, and \$6

**Monday
June 29**

Halloween Day
Dress Up



Obstacle Course



**Tuesday
June 30**

Christmas
Dress Up

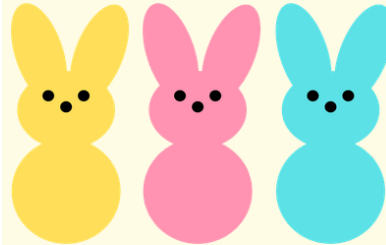


Playground Games



**Wednesday
July 1**

Easter Day
Dress Up



Fishing Contest



**Thursday
July 2**

4th of July Day
Dress Up



Nerf Day

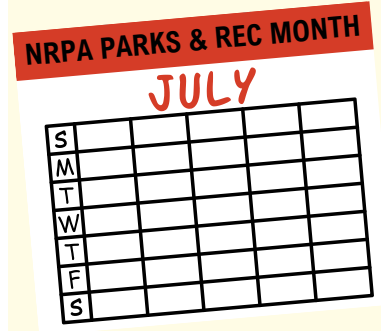


Southern Snoballs



**Friday
July 3**

NO CAMP!!!



- **Camp Hours** 7:30 a.m. - 6 p.m.
- Have questions? Refer to the "How to have a Perfect Week at Camp" document.
- Calendars are subject to change



CAMP DIRECTOR:

Shanell Washington | SWashington@leegov.com

WA-KE HATCHEE REC CENTER TRADITIONAL CAMP

(239) 533-6850

PERFECT WEEK AT TYPE CAMP

WA-KE HATCHEE WEEK 3

CAMPER DAILY'S

- Lunch
- a.m./p.m. snack
- SUNSCREEN
- Bug spray
- Refillable Water Bottle
- Closed toed shoes (No Crocs)

GUARDIAN DAILY'S

- Make sure to complete your Supplemental Form before Monday
- Phones and other electronics are not allowed
- Money for Sno cones on Thursday
- K-Second grade aged kids need to have an extra change of clothes packed with them DAILY in their backpack

CAMP HOURS

- Monday- Thursday 7:30 a.m.- 6 p.m.
- Morning Snack: 9:30 a.m.
- Lunch 12:30 p.m. -1:30 p.m.
- Afternoon Snack 3:15 p.m.

SPECIAL EVENTS

- **Water Day on Wednesday**
 - Bring a towel, swimsuit, change of clothes, sunscreen, and water shoes
 - Fishing Contest
- **Thursday**
 - Nerf Day
 - Food Truck Day
- **Holiday Week**
 - Halloween
 - Christmas
 - Easter
 - Fourth of July
- **NO CAMP ON FRIDAY, JULY 3!**
HAVE A FUN AND SAFE HOLIDAY!

GUEST SPEAKERS

- Tuesday
 - Probation Officer Presentation
- Wednesday
 - LCEC Presentation

REMINDERS

- **It's Holiday Week no camp on Friday July 3, 2026**
 - **Check the Camp Calendar to see what to wear each day!**
- Write your camper's names on their items
- Check Lost & Found every day!
- Southern Snowballs (snow cones)
 - Cash Only due Thursday: \$3, \$5, or \$6



CAMPER SIGN-IN/OUT POLICY

A parent or guardian is required to sign in and sign out each camper daily. Only people who have previously been listed on the Supplemental Information Sheet will be permitted to sign for your child at pick up. Photo ID will be required. Changes must be submitted in writing.

WA-KE TRADITIONAL CAMP WEEK 4

IMPORTANT ANNOUNCEMENTS & REMINDERS

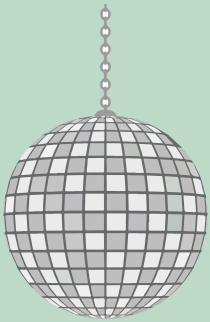
Shark Week

Southern Snoballs on Friday! **Cash Only**; \$3, \$5, and \$6

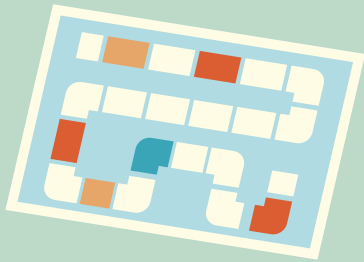
Make sure you check the lost & found every day!

**Monday
July 6**

Dance Party



Board Games



**Tuesday
July 7**

Ranger Presentation

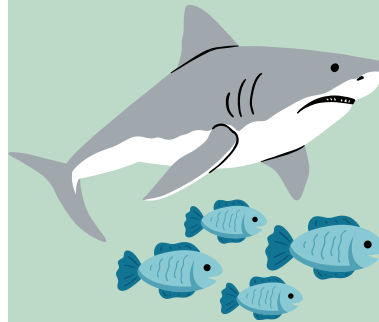


Soccer



**Wednesday
July 8**

Sharks & Minnows



Water Gun Battle



**Thursday
July 9**

ALL CAMP FIELD
TRIP

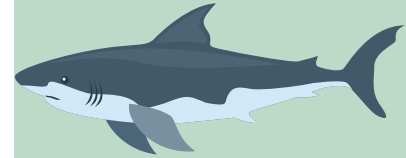
SkyZone Trampoline
Park

9 a.m. - 12:45 p.m.



**Friday
July 10**

Shark Tank
Challenge



Southern Snoballs



- **Camp Hours** 7:30 a.m. - 6 p.m.
- Have questions? Refer to the "How to have a Perfect Week at Camp" document.
- Calendars are subject to change



CAMP DIRECTOR:

Shanell Washington | SWashington@leegov.com

WA-KE HATCHEE REC CENTER TRADITIONAL CAMP

(239) 533-6850

PERFECT WEEK AT TYPE CAMP

WA-KE HATCHEE WEEK 4

CAMPER DAILY'S

- Lunch
- a.m./p.m. snack
- SUNSCREEN
- Bug spray
- Refillable Water Bottle
- Closed toed shoes (No Crocs)

GUARDIAN DAILY'S

- Make sure to complete your Supplemental Form before Monday
- Phones and other electronics are not allowed
- Money for Sno cones on Thursday
- K-Second grade aged kids need to have an extra change of clothes packed with them DAILY in their backpack

CAMP HOURS

- Monday- Friday 7:30 a.m.- 6 p.m.
- Morning Snack: 9:30 a.m.
- Lunch 12:30 p.m. -1:30 p.m.
- Afternoon Snack 3:15 p.m.

SPECIAL EVENTS

- **Water Day on Wednesday**
 - Bring a towel, swimsuit, change of clothes, sunscreen, and water shoes
- **ALL CAMP FIELD TRIP: Skyzone Trampoline Park on Thursday, July 9!**
 - Wear your camp shirt
 - **We will leave at 9:45 a.m. sharp!**

GUEST SPEAKERS

- Tuesday
 - Ranger Presentation

REMINDERS

- Write your camper's names on their items
- Check Lost & Found every day!
- Southern Snowballs (snow cones)
- Cash Only due Thursday: \$3, \$5, or \$6



CAMPER SIGN-IN/OUT POLICY

A parent or guardian is required to sign in and sign out each camper daily. Only people who have previously been listed on the Supplemental Information Sheet will be permitted to sign for your child at pick up. Photo ID will be required. Changes must be submitted in writing.

WA-KE TRADITIONAL CAMP WEEK 5

IMPORTANT ANNOUNCEMENTS & REMINDERS

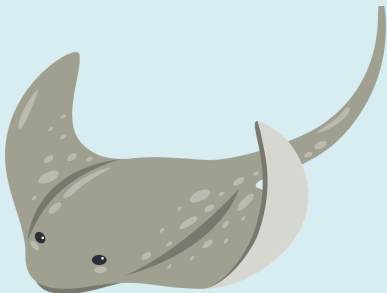
Ocean Explorer Week
Southern Snoballs on Friday! **Cash Only**; \$3, \$5, and \$6
Make sure you check the lost & found every day!

**Monday
July 13**

Groups 11 & 12 Field
Trip

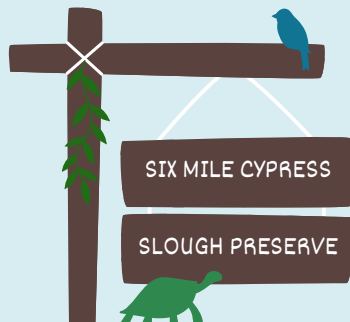


Paper Stingray Craft

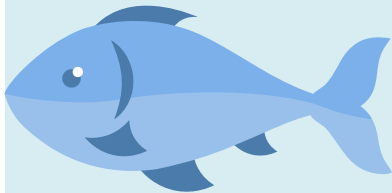


**Tuesday
July 14**

Group 11 Field Trip



Coffee Filter Fish Craft

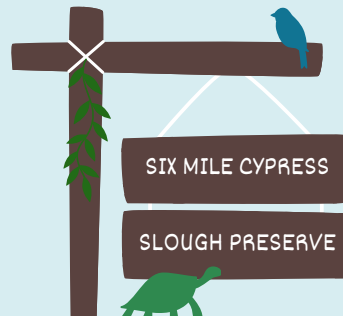


**Wednesday
July 15**

Water Balloon Toss



Group 12 Field Trip



**Thursday
July 16**

Science Project



Clay Stamp Making



**Friday
July 17**

Tug of War



Southern Snoballs



- **Camp Hours** 7:30 a.m. - 6 p.m.
- Have questions? Refer to the "How to have a Perfect Week at Camp" document.
- Calendars are subject to change



CAMP DIRECTOR:
Shanell Washington | SWashington@leegov.com
WA-KE HATCHEE REC CENTER TRADITIONAL CAMP
(239) 533-6850

PERFECT WEEK AT TYPE CAMP

WA-KE HATCHEE WEEK 5

CAMPER DAILY'S

- Lunch
- a.m./p.m. snack
- SUNSCREEN
- Bug spray
- Refillable Water Bottle
- Closed toed shoes (No Crocs)

GUARDIAN DAILY'S

- Make sure to complete your Supplemental Form before Monday
- Phones and other electronics are not allowed
- Money for Sno cones on Thursday
- K-Second grade aged kids need to have an extra change of clothes packed with them DAILY in their backpack

CAMP HOURS

- Monday- Friday 7:30 a.m.- 6 p.m.
- Morning Snack: 9:30 a.m.
- Lunch 12:30 p.m. -1:30 p.m.
- Afternoon Snack 3:15 p.m.

SPECIAL EVENTS

- **Water Day on Wednesday**
 - Bring a towel, swimsuit, change of clothes, sunscreen, and water shoes
- **Thursday, July 16**
 - Science Project Display
 - 4:30pm - 6:30pm

GUEST SPEAKERS

- Thursday
 - 4H Youth Development Presentation

REMINDERS

- Write your camper's names on their items
- Check Lost & Found every day!
- Southern Snowballs (snow cones)
- Cash Only due Thursday: \$3, \$5, or \$6



CAMPER SIGN-IN/OUT POLICY

A parent or guardian is required to sign in and sign out each camper daily. Only people who have previously been listed on the Supplemental Information Sheet will be permitted to sign for your child at pick up. Photo ID will be required. Changes must be submitted in writing.

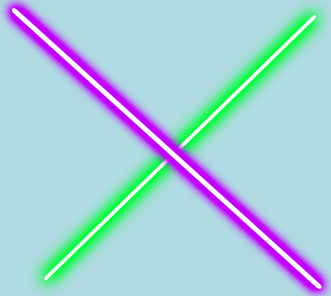
WA-KE TRADITIONAL CAMP WEEK 6

IMPORTANT ANNOUNCEMENTS & REMINDERS

Deep Sea Outlaw Week
Southern Snoballs on Friday! **Cash Only**; \$3, \$5, and \$6
Make sure you check the lost & found every day!

**Monday
July 20**

Glow Party



Treasure Hunt

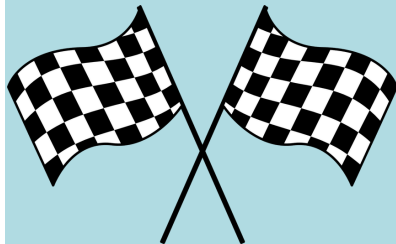


**Tuesday
July 21**

Slime Party



Water Boat Race

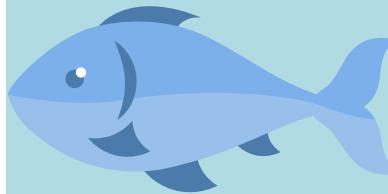


**Wednesday
July 22**

Field Trip to the Zoo

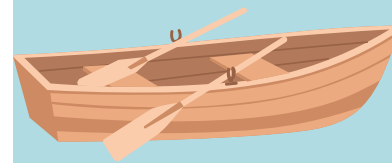


Red Rover (Fishy, Fishy
Cross my Ocean



**Thursday
July 23**

Build a Boat

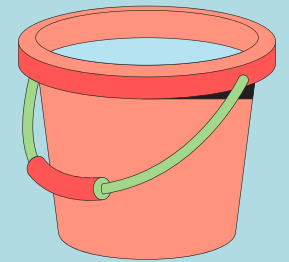


Animal Dioramas



**Friday
July 24**

Fill the Bucket Relay
Race



Southern Snoballs



- **Camp Hours** 7:30 a.m. - 6 p.m.
- Have questions? Refer to the "How to have a Perfect Week at Camp" document.
- Calendars are subject to change



CAMP DIRECTOR:

Shanell Washington | SWashington@leegov.com

WA-KE HATCHEE REC CENTER TRADITIONAL CAMP
(239) 533-6850

THE GREAT OUTDOORS AT WA-KE HATCHEE

DEEP SEA GLOW WEEK 6

CAMPER DAILY'S

- Lunch
- a.m./p.m. snack
- SUNSCREEN
- Bug spray
- Refillable Water Bottle
- Closed toed shoes (No Crocs)

GUARDIAN DAILY'S

- Make sure to complete your Supplemental Form before Monday
- Phones and other electronics are not allowed
- Money for Sno cones on Thursday
- K-Second grade aged kids need to have an extra change of clothes packed with them DAILY in their backpack

CAMP HOURS

- Monday- Friday 7:30 a.m.- 6 p.m.
- Morning Snack: 9:30 a.m.
- Lunch 12:30 p.m. -1:30 p.m.
- Afternoon Snack 3:15 p.m.

SPECIAL EVENTS

- **ALL CAMP FIELD TRIP: Naples Zoo on Wednesday, July 22!**
 - Wear your camp shirt
 - **We will leave at 9:15 a.m. sharp!**
- **Water Day on Friday**
 - Bring a towel, swimsuit, change of clothes, sunscreen, and water shoes

GUEST SPEAKERS

- Tuesday
 - Library Walk Through

REMINDERS

- Write your camper's names on their items
- Check Lost & Found every day!
- Southern Snoballs (snow cones)
- Cash Only: \$3, \$5, or \$6



CAMPER SIGN-IN/OUT POLICY

A parent or guardian is required to sign in and sign out each camper daily. Only people who have previously been listed on the Supplemental Information Sheet will be permitted to sign for your child at pick up. Photo ID will be required. Changes must be submitted in writing.

WA-KE TRADITIONAL CAMP WEEK 7

IMPORTANT ANNOUNCEMENTS & REMINDERS

Island Survival Week

Southern Snoballs on Friday! **Cash Only**; \$3, \$5, and \$6

Make sure you check the lost & found every day!

Monday
July 27

Groups 9 & 10 Field
Trip

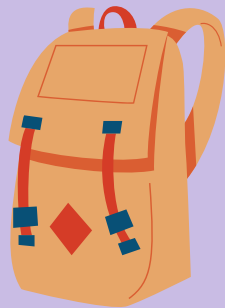


Guess Who

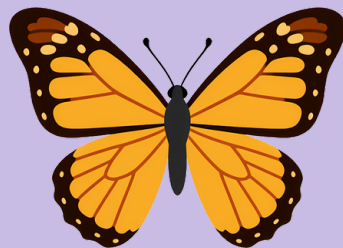


Tuesday
July 28

Outdoor Wear Making



Ecosystem Survival
Game



Wednesday
July 29

Relay Race

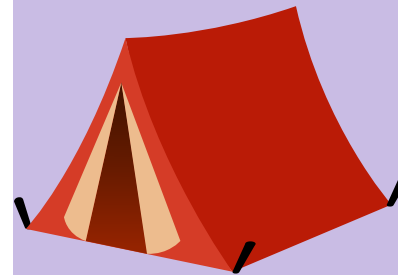


Cross the River Game

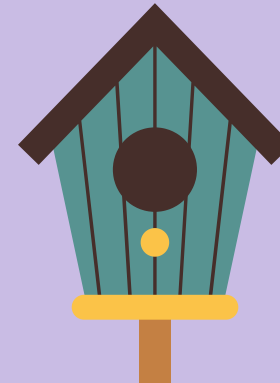


Thursday
July 30

Building a Shelter



Natural Bird Feeders



Friday
July 31

Field Day



Sno Cones



- **Camp Hours** 7:30 a.m. - 6 p.m.
- Have questions? Refer to the "How to have a Perfect Week at Camp" document.
- Calendars are subject to change



CAMP DIRECTOR:

Shanell Washington | SWashington@leegov.com

WA-KE HATCHEE REC CENTER TRADITIONAL CAMP
(239) 533-6850

PERFECT WEEK AT TYPE CAMP

ISLAND SURVIVAL WEEK 7

CAMPER DAILY'S

- Lunch
- Am/pm snack
- SUNSCREEN
- Bug spray
- Refillable Water Bottle
- Closed toed shoes

GUARDIAN DAILY'S

- Make sure to complete your Supplemental Form before Monday
- Phones and other electronics are not allowed
- Money for Sno cones on Thursday
- K-2nd grade aged kids need to have an extra change of clothes packed with them DAILY in their backpack

CAMP HOURS

- Monday- Friday 7:30 a.m.- 6 p.m.
- Morning Snack: 9:30 a.m.
- Lunch 12:30 p.m. -1:30 p.m.
- Afternoon Snack 3:15 p.m.

SPECIAL EVENTS

- **Water Day on Wednesday**
 - Bring a towel, swimsuit, change of clothes, sunscreen, and water shoes

GUEST SPEAKERS

- None this week!

REMINDERS

- Write your camper's names on their items
- Check Lost & Found every day!
- Southern Snoballs (snow cones)
- Cash Only: \$3, \$5, or \$6



CAMPER SIGN-IN/OUT POLICY

A parent or guardian is required to sign in and sign out each camper daily. Only people who have previously been listed on the Supplemental Information Sheet will be permitted to sign for your child at pick up. Photo ID will be required. Changes must be submitted in writing.