

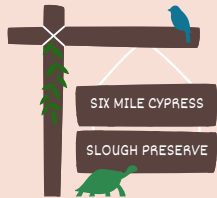
# SLOUGH SECRETS - WEEK 1

## IMPORTANT ANNOUNCEMENTS & REMINDERS

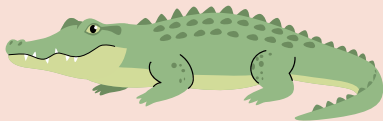
- All campers MUST be signed in and out daily at the Interpretive Center at Six Mile Cypress Slough by a parent or guardian.
- Personal items such as cell phones and gaming devices should be left home.
- Campers must bring a non-perishable lunch, snacks, and refillable water bottle daily.
- Please bring a change of clothes, a towel, and extra closed-toed shoes on Friday.

**Monday  
June 16**

Guided Boardwalk Hike



Gators & Herons Game



Call of the Wild Challenge



**Tuesday  
June 17**

Wildlife Olympics



Bare Facts About Bears



Know Your Noggins



**Wednesday  
June 18**

Nature Portrait



Wading Bird Snacktivity



Nocturnal Animals  
Presentation



**Thursday  
June 19**

Camper Led Walk



Butterfly Presentation



Befriend a Tree



**Friday  
June 20**

Wet Walk



Camp Trivia



Parent Presentation 3:00



- **Camp Hours** 8 a.m. - 4:30 p.m.
- Have questions? Refer to the "How to have a Perfect Week at Camp" document.
- Calendars are subject to change



**CAMP DIRECTOR:**

Gerald Thompson | [GThompson@leegov.com](mailto:GThompson@leegov.com)

**SIX MILE CYPRESS SLOUGH SPECIALTY CAMP:**

(239) 565-7880

# PERFECT WEEK AT SIX MILE CYPRESS SLOUGH SPECIALTY CAMP

## SLOUGH SECRETS

### CAMPER DAILIES

- Campers must wear closed-toed shoes.
- Bring a non-perishable lunch and snacks.
- Bring a refillable water bottle.

### GUARDIAN DAILIES

- Campers must be signed in and out at the Interpretive Center daily.
- Camp activities begin promptly at 8:30 a.m.
- Don't forget your photo ID!

### CAMP HOURS

8 a.m. - 4:30 p.m.

Lunch at 12 p.m.

Snack times may vary based on activities

### SPECIAL EVENTS

You are invited to a special end-of-week presentation on Friday put on by our campers.

Family and friends welcome!

Seating begins at 2:45 p.m.

Friday will be an **OPTIONAL** early release day!

### GUEST SPEAKERS

- Thursday, June 18 - Ranger Rudd will join us at camp to teach us about Florida's butterflies and how we can help them flourish!

### REMINDERS

- Friday morning is our wet walk! Campers must wear closed-toed shoes and long pants.

Please bring:

- change of clothes
- towel
- extra closed-toed shoes
- bag for wet clothes



### CAMPER SIGN-IN/OUT POLICY

A parent or guardian is required to sign in and sign out each camper daily. Only people who have previously been listed on the Supplemental Information Sheet will be permitted to sign for your child at pick up. Photo ID will be required. Changes must be submitted in writing.

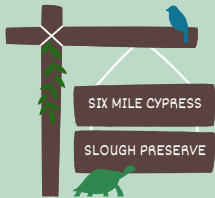
# SUMMER NATURALISTS - WEEK 4

## IMPORTANT ANNOUNCEMENTS & REMINDERS

- All campers **MUST** be signed in and out daily at the Interpretive Center at Six Mile Cypress Slough by a parent or guardian.
- Personal items such as cell phones and gaming devices should be left home.
- Campers must bring a non-perishable lunch, snacks, and refillable water bottle daily.
- Please bring a change of clothes, a towel, and extra closed-toed shoes on Friday.

**Monday  
July 6th**

Guided Boardwalk Hike



Slime Mold Presentation



Mushroom Spore Art



**Tuesday  
July 7th**

Photography Workshop



Dung Beetle Dodgeball



Butterfly Camouflage  
Challenge

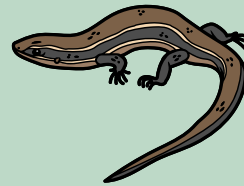


**Wednesday  
July 8th**

Frog Treasure Hunt



Slinky Skinky Craft



Reptiles Meet & Greet



**Thursday  
July 9th**

Seed Bomb Activity



Scat & Track ID



Owl Pellet Dissection



**Friday  
July 10th**

Wet Walk



Camp Trivia



Parent Presentation 3:00



- **Camp Hours** 8 a.m. - 4:30 p.m.
- Have questions? Refer to the "How to have a Perfect Week at Camp" document.
- Calendars are subject to change



**CAMP DIRECTOR:**

Gerald Thompson | [GThompson@leegov.com](mailto:GThompson@leegov.com)

**SIX MILE CYPRESS SLOUGH SPECIALTY CAMP:**

(239) 565-7880

# PERFECT WEEK AT SIX MILE CYPRESS SLOUGH SPECIALTY CAMP

## SUMMER NATURALISTS

### CAMPER DAILIES

- Campers must wear closed-toed shoes.
- Bring a non-perishable lunch and snacks.
- Bring a refillable water bottle.

### GUARDIAN DAILIES

- Campers must be signed in and out at the Interpretive Center daily.
- Camp activities begin promptly at 8:30 a.m.
- Don't forget your photo ID!

### CAMP HOURS

8 a.m. - 4:30 p.m.

Lunch at 12 p.m.

Snack times may vary based on activities

### SPECIAL EVENTS

You are invited to a special end-of-week presentation on Friday of everything we learned during the week put on by our campers.

Family and friends welcome!

Seating begins at 2:45 p.m.

Friday will be an OPTIONAL early release day!

### GUEST SPEAKERS

- Tuesday, July 7 - Photography lesson hosted by the Friends of Six Mile Cypress Slough Preserve.

### REMINDERS

- Friday morning is our wet walk! Campers must wear closed-toed shoes and long pants.

Please bring:

- change of clothes
- towel
- extra closed-toed shoes
- bag for wet clothes



### CAMPER SIGN-IN/OUT POLICY

A parent or guardian is required to sign in and sign out each camper daily. Only people who have previously been listed on the Supplemental Information Sheet will be permitted to sign for your child at pick up. Photo ID will be required. Changes must be submitted in writing.

# ART IN NATURE - WEEK 7

## IMPORTANT ANNOUNCEMENTS & REMINDERS

- All campers **MUST** be signed in and out daily at the Interpretive Center at Six Mile Cypress Slough by a parent or guardian.
- Personal items such as cell phones and gaming devices should be left home.
- Campers must bring a non-perishable lunch, snacks, and refillable water bottle daily.
- Please bring a change of clothes, a towel, and extra closed-toed shoes on Friday.

**Monday**  
July 20th

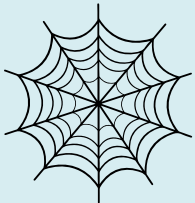
Guided Boardwalk Hike



Nature Journaling



Spider Web Weaving



**Tuesday**  
July 21st

Photography Workshop



Butterfly Camouflage  
Challenge



Building Blooms



**Wednesday**  
July 22nd

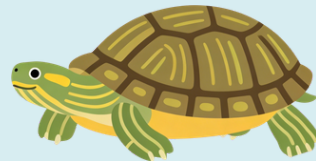
Garden Painting



Nature Portrait



Clay Critter Creations



**Thursday**  
July 23rd

PoeTree Writing



Ugly is Beautiful Craft



Eco-Sketch Performances



**Friday**  
July 24th

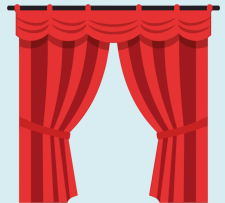
Wet Walk



Camp Trivia



Art Show 3:00



- **Camp Hours** 8 a.m. - 4:30 p.m.
- Have questions? Refer to the "How to have a Perfect Week at Camp" document.
- Calendars are subject to change



**CAMP DIRECTOR:**

Gerald Thompson | [GThompson@leegov.com](mailto:GThompson@leegov.com)

**SIX MILE CYPRESS SLOUGH SPECIALTY CAMP:**

(239) 565-7880

# PERFECT WEEK AT SIX MILE CYPRESS SLOUGH SPECIALTY CAMP

## ART IN NATURE

### CAMPER DAILIES

- Campers must wear closed-toed shoes.
- Bring a non-perishable lunch and snacks.
- Bring a refillable water bottle.

### GUARDIAN DAILIES

- Campers must be signed in and out at the Interpretive Center daily.
- Camp activities begin promptly at 8:30 a.m.
- Don't forget your photo ID!

### CAMP HOURS

8 a.m. - 4:30 p.m.

Lunch at 12 p.m.

Snack times may vary based on activities

### SPECIAL EVENTS

We are pleased to invite you to the 2025 Six Mile Cypress Slough Summer Camp Art Show on Friday hosted by our campers. Family and friends welcome!

Gallery opens at 3 p.m.

Friday will be an OPTIONAL early release day!

### GUEST SPEAKERS

- Tuesday, July 21 - Photography lesson hosted by the Friends of Six Mile Cypress Slough Preserve.
- Wednesday, July 22 - Local artist Dayarmys Piloto de la Paz will be leading us in a botanical painting workshop.

### REMINDERS

- Friday morning is our wet walk! Campers must wear closed-toed shoes and long pants.

Please bring:

- change of clothes
- towel
- extra closed-toed shoes
- bag for wet clothes



### CAMPER SIGN-IN/OUT POLICY

A parent or guardian is required to sign in and sign out each camper daily. Only people who have previously been listed on the Supplemental Information Sheet will be permitted to sign for your child at pick up. Photo ID will be required. Changes must be submitted in writing.

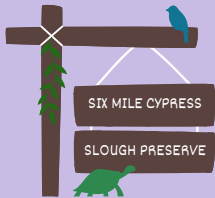
# WILDERNESS EXPLORERS - WEEK 7

## IMPORTANT ANNOUNCEMENTS & REMINDERS

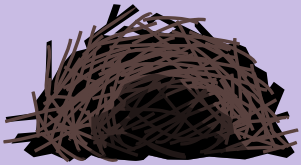
- All campers **MUST** be signed in and out daily at the Interpretive Center at Six Mile Cypress Slough by a parent or guardian.
- Personal items such as cell phones and gaming devices should be left home.
- Campers must bring a non-perishable lunch, snacks, and refillable water bottle daily.
- Please bring a change of clothes, a towel, and extra closed-toed shoes on Friday.

**Monday  
July 27th**

Guided Boardwalk Hike



Shelter Building

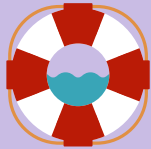


Cordage & Knot-Tying



**Tuesday  
July 28th**

Water Survival Skills



Open Swim



Ice Cream



**Wednesday  
July 29th**

Canning Workshop



Dung Beetle Dodgeball



Wilderness First Aid



**Thursday  
July 30th**

Kayaking



Fishing



Fire Building



**Friday  
July 31st**

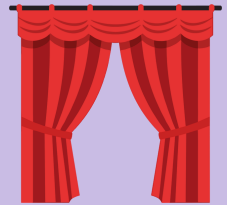
Wet Walk



Camp Trivia



Skills Demonstration 3:00



- **Camp Hours** 8 a.m. - 4:30 p.m.
- Have questions? Refer to the "How to have a Perfect Week at Camp" document.
- Calendars are subject to change



### CAMP DIRECTOR:

Gerald Thompson | [GThompson@leegov.com](mailto:GThompson@leegov.com)

### SIX MILE CYPRESS SLOUGH SPECIALTY CAMP:

(239) 565-7880

# PERFECT WEEK AT SIX MILE CYPRESS SLOUGH SPECIALTY CAMP WILDERNESS EXPLORERS

## CAMPER DAILIES

- Campers must wear closed-toed shoes.
- Bring a non-perishable lunch and snacks.
- Bring a refillable water bottle.

## GUARDIAN DAILIES

- Campers must be signed in and out at the Interpretive Center daily.
- Camp activities begin promptly at 8:30 a.m.
- Don't forget your photo ID!

## CAMP HOURS

8 a.m. - 4:30 p.m.

Lunch at 12 p.m.

Snack times may vary based on activities

## SPECIAL EVENTS

Tuesday, July 28 will be a pool day at Pine Island Pool to learn water survival techniques.

Thursday, July 30 - We will be traveling to Manatee Park to learn kayaking and fishing skills.

You are invited to a special skills presentation on Friday put on by our campers. Family and friends welcome! Presentation begins at 3:00 p.m.

Friday will be an OPTIONAL early release day!

## GUEST SPEAKERS

- Wednesday, July 29 - UF/IFAS will be teaching our campers how to can vegetables!
- Wednesday, July 29 - Lt. Keith Kuiper will be teaching our campers about wilderness first aid techniques.

## REMINDERS

- We are kayaking on Thursday and going for a Slough Wet Walk on Friday!

Please bring:

- change of clothes
- towel
- extra closed-toed shoes
- bag for wet clothes

## CAMPER SIGN-IN/OUT POLICY

A parent or guardian is required to sign in and sign out each camper daily. Only people who have previously been listed on the Supplemental Information Sheet will be permitted to sign for your child at pick up. Photo ID will be required. Changes must be submitted in writing.

