

OLGA TRADITIONAL CAMP WEEK #1

CAMP ADVENTURES KICK OFF IMPORTANT ANNOUNCEMENTS & REMINDERS

Welcome to camp! Please check the sign in sheet to see which group you are in this week!
Please bring cash for Kona Ice on Thursday.

Monday
June 15



Camp Do's and Don'ts -
Who and What to Know

Create a Team Name and
Cheer with your group.



Group Ice Breakers

Tuesday
June 16

Group Craft -
DIY Binoculars



Group 3-Ball



Wednesday
June 17

Guest Speaker -
Riverdale Library
GPS 1 & 2 at 10 a.m.
GPS 3 & 4 at 10:30 a.m.

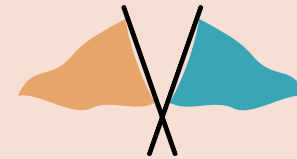


Olga Scavenger Hunt



Thursday
June 18

Group Capture the Flag



Kona Ice
1 p.m.
\$5-\$8



Friday
June 19

Water Day at Camp!

Groups 1 & 2 at 10 a.m.
Groups 3 & 4 at 1 p.m.

Don't forget to bring:
Sunscreen
Towel
Water shoes
Change of clothes



- **Camp Hours** 7:30 a.m. - 6 p.m. | **Lunch** 11:30 a.m. | **Snack** 9 a.m. & 3 p.m.
- Anyone signing out a camper **must show photo I.D.**
- Have questions? Refer to the "How to have a Perfect Week at Camp" or Parent Guide documents.
- Calendars are subject to change.



CAMP DIRECTOR:

Becca Wemer | BWemer@leegov.com

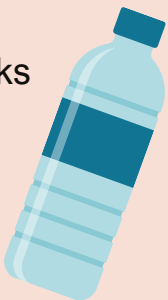
OLGA COMMUNITY CENTER TRADITIONAL CAMP
(239) 694-2291

PERFECT WEEK AT TRADITIONAL CAMP

OLGA WEEK #1

CAMPER DAILY'S

- **Bring** to camp
 - Lunch & snacks
 - Water bottle
- **Leave** at home
 - Electronics
 - Toys/Sports equipment
 - Stuffed animals/blankets
- **Wear** closed toed shoes; no Crocs.



GUARDIAN DAILY'S

- Please sign your camper in/out daily with photo I.D. in the front lobby of the center.
- Check with staff about any reminders or reports.

CAMP HOURS

- **Camp** 7:30 a.m. - 6 p.m.
 - **Morning announcements** 9:15 a.m.
 - **Lunch** 11:30 a.m.
 - **Snacks** 9 a.m. & 3 p.m.



SPECIAL EVENTS

- **Create a Team Name & Cheer** on Monday
- **Kona Ice** on Thursday
 - Bring cash \$5 - \$8 to participate
- **Water Day at Camp** on Friday
 - GPS 1 & 2 at 10 a.m.
 - GPS 3 & 4 at 1 p.m.



GUEST SPEAKERS

- Riverdale Library on Wednesday



REMINDERS

- Please label all your camper's belongings; i.e. water bottle, camp shirt, etc.
- Be sure to check the lost and found before your last day.



CAMPER SIGN-IN/OUT POLICY

A parent or guardian is required to sign in and sign out each camper daily. Only people who have previously been listed on the Supplemental Information Sheet will be permitted to sign for your child at pick up. Photo ID will be required. Changes must be submitted in writing.

OLGA TRADITIONAL CAMP WEEK #2

CAMP GAMES IMPORTANT ANNOUNCEMENTS & REMINDERS

Welcome to camp! Please check the sign in sheet to see which group you are in this week!
Don't forget to pack a bathing suit, towel, and sunscreen for your group's swim day. Also, bring cash for Kona Ice on Thursday.

Monday
June 22



Camp Do's and Don'ts -
Who and What to Know

Play kickball with your
group today!



NRPA Project -
"The Power of..."

Guest Speaker -
UF/IFAS Bee Hotels
GPS 1 & 2 1-1:30p.m.
GPS 3 & 4 1:45-2:15p.m.

Tuesday
June 23

Punting Contest



Swimming at
Tice Community Pool
GPS 3 & 4
12:30-2:30 p.m.
Vans leave at noon
Vans return at 3 p.m.



Wednesday
June 24

King of the Court



Swimming at
Tice Community Pool
GPS 1 & 2
12:30-2:30 p.m.
Vans leave at noon
Vans return at 3 p.m.



Thursday
June 25

World Cup



Kona Ice
1 p.m.
\$5-\$8



Friday
June 26

Olga Olympics

Bottle Flipping
20-yard Dash
Clown Toss
Paper Plate Discus
Hula Hoop Marathon



Group Craft -
Mosaic Sports

- **Camp Hours** 7:30 a.m. - 6 p.m. | **Lunch** 11:30 a.m. | **Snack** 9 a.m. & 3 p.m.
- Anyone signing out a camper **must show photo I.D.**
- Have questions? Refer to the "How to have a Perfect Week at Camp" or Parent Guide documents.
- Calendars are subject to change.



CAMP DIRECTOR:

Becca Wemer | BWemer@leegov.com

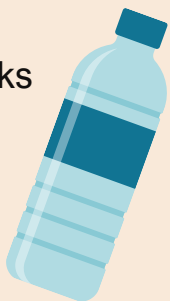
OLGA COMMUNITY CENTER TRADITIONAL CAMP
(239) 694-2291

PERFECT WEEK AT TRADITIONAL CAMP

OLGA WEEK #2

CAMPER DAILY'S

- **Bring** to camp
 - Lunch & snacks
 - Water bottle
- **Leave** at home
 - Electronics
 - Toys/Sports equipment
 - Stuffed animals/blankets
- **Wear** closed toed shoes; no Crocs.



GUARDIAN DAILY'S

- Please sign your camper in/out daily with photo I.D. in the front lobby of the center.
- Check with staff about any reminders or reports.

CAMP HOURS

- **Camp** 7:30 a.m. - 6 p.m.
 - **Morning announcements** 9:15 a.m.
 - **Lunch** 11:30 a.m.
 - **Snacks** 9 a.m. & 3 p.m.



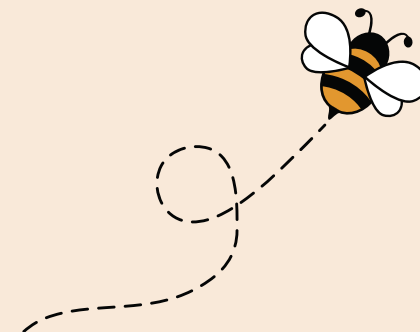
SPECIAL EVENTS

- **Celebrate Parks & Rec Month** this week
 - Starts on Monday and ends on Friday
 - See your camper's Flat Stanley in the lobby
- **Swimming**
 - GPS 3 & 4 on Tuesday
 - GPS 1 & 2 on Wednesday
- **Kona Ice** on Thursday
 - Bring cash \$5 - \$8 to participate
- **Olga Olympics** on Friday



GUEST SPEAKERS

- UF/IFAS - Bee Hotels on Monday



REMINDERS

- Please label all your camper's belongings; i.e. water bottle, camp shirt, etc.
- Be sure to check the lost and found before your last day.



CAMPER SIGN-IN/OUT POLICY

A parent or guardian is required to sign in and sign out each camper daily. Only people who have previously been listed on the Supplemental Information Sheet will be permitted to sign for your child at pick up. Photo ID will be required. Changes must be submitted in writing.

OLGA TRADITIONAL CAMP WEEK #3

CAMP SCIENCE

IMPORTANT ANNOUNCEMENTS & REMINDERS

Welcome to camp! Please check the sign in sheet to see which group you are in this week!

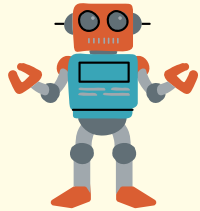
Don't forget to pack a bathing suit, towel, and sunscreen for your group's swim day. Also, we have a field trip on Thursday.

**Monday
June 29**



Camp Do's and Don'ts -
Who and What to Know

Invention Challenge



Guest Speaker -
Captains for Clean Water
GPS 1 & 2 at 1 p.m.
GPS 3 & 4 at 1:45 p.m.

**Tuesday
June 30**

Group Craft -
Bird Feeders



Swimming at
Tice Community Pool
GPS 3 & 4
12:30-2:30 p.m.
Vans leave at noon
Vans return at 3 p.m.



**Wednesday
July 1**

Guest Speaker -
Pickles with
UF/IFAS Extension
Groups 1 & 2 at 9:30 a.m.
Groups 3 & 4 at 10:30 a.m.

Swimming at
Tice Community Pool
GPS 1 & 2
12:30-2:30 p.m.
Vans leave at noon
Vans return at 3 p.m.



**Thursday
July 2**

Field Trip
ALL GROUPS
Manatee Park &
Top Golf
10 a.m. - 3 p.m.
Bus leaves camp at 9:45 a.m.
Bus returns at 3:30 p.m.

Don't forget to bring:
Cold lunch
Insulated water bottle



**Friday
July 3**

NO CAMP

HAPPY 4TH OF JULY!



Have a fun and
safe holiday!

- **Camp Hours** 7:30 a.m. - 6 p.m. | **Lunch** 11:30 a.m. | **Snack** 9 a.m. & 3 p.m.
- Anyone signing out a camper **must show photo I.D.**
- Have questions? Refer to the "How to have a Perfect Week at Camp" or Parent Guide documents.
- Calendars are subject to change.



CAMP DIRECTOR:

Becca Wemer | BWemer@leegov.com

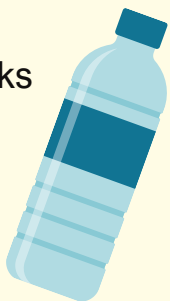
OLGA COMMUNITY CENTER TRADITIONAL CAMP
(239) 694-2291

PERFECT WEEK AT TRADITIONAL CAMP

OLGA WEEK #3

CAMPER DAILY'S

- **Bring** to camp
 - Lunch & snacks
 - Water bottle
- **Leave** at home
 - Electronics
 - Toys/Sports equipment
 - Stuffed animals/blankets
- **Wear** closed toed shoes; no Crocs.



GUARDIAN DAILY'S

- Please sign your camper in/out daily with photo I.D. in the front lobby of the center.
- Check with staff about any reminders or reports.

CAMP HOURS

- **Camp** 7:30 a.m. - 6 p.m.
 - **Morning announcements** 9:15 a.m.
 - **Lunch** 11:30 a.m.
 - **Snacks** 9 a.m. & 3 p.m.



SPECIAL EVENTS

- **Swimming**
 - GPS 3 & 4 on Tuesday
 - GPS 1 & 2 on Wednesday
- **Bus Field Trip** to Manatee Park & Top Golf on Thursday
 - All GPS
 - Please come prepared and be to camp on time
- **NO CAMP** on Friday
 - Enjoy your holiday!



GUEST SPEAKERS

- Captains for Clean Water on Monday
- UF/IFAS - Pickling on Wednesday



REMINDERS

- Please label all your camper's belongings; i.e. water bottle, camp shirt, etc.
- Be sure to check the lost and found before your last day.



CAMPER SIGN-IN/OUT POLICY

A parent or guardian is required to sign in and sign out each camper daily. Only people who have previously been listed on the Supplemental Information Sheet will be permitted to sign for your child at pick up. Photo ID will be required. Changes must be submitted in writing.

OLGA TRADITIONAL CAMP WEEK #4

CAMP HOLIDAYS

IMPORTANT ANNOUNCEMENTS & REMINDERS

Welcome to camp! Please check the sign in sheet to see which group you are in this week!

Don't forget to pack a bathing suit, towel, and sunscreen for your group's swim day. Also, we have a field trip on Thursday.

**Monday
July 6**



Valentine's Day

Wear PINK or RED today!

Camp Do's and Don'ts -
Who and What to Know

Group Craft -
Love You to Pieces

Guest Speaker -
Shell Museum

GPS 1 & 2 at 1 p.m.
GPS 3 & 4 at 1:50 p.m.



**Tuesday
July 7**

St. Patrick's Day

Wear GREEN today!

Let's Play Lucky Bingo

Swimming at
Tice Community Pool
GPS 3 & 4

12:30-2:30 p.m.

Vans leave at noon
Vans return at 3 p.m.



**Wednesday
July 8**

Halloween

Wear your favorite
costume today!
NO MASKS



Swimming at
Tice Community Pool
GPS 1 & 2

12:30-2:30 p.m.

Vans leave at noon
Vans return at 3 p.m.



**Thursday
July 9**

Veteran's Day

Field Trip
ALL GROUPS
Lakes Park &
Bowling at Gator Lanes
10:30 a.m.-3:45 p.m.
Bus leaves camp at 9:45 a.m.
Bus returns at 3:45 p.m.

Don't forget to bring:
Cold lunch
Insulated water bottle



**Friday
July 10**

Christmas

Dress up to show your
holiday spirit!

Movie
The Santa Claus



Group Santa Says



- **Camp Hours** 7:30 a.m. - 6 p.m. | **Lunch** 11:30 a.m. | **Snack** 9 a.m. & 3 p.m.
- Anyone signing out a camper **must show photo I.D.**
- Have questions? Refer to the "How to have a Perfect Week at Camp" or Parent Guide documents.
- Calendars are subject to change.



CAMP DIRECTOR:

Becca Wemer | BWemer@leegov.com

OLGA COMMUNITY CENTER TRADITIONAL CAMP
(239) 694-2291

PERFECT WEEK AT TRADITIONAL CAMP

OLGA WEEK #4

CAMPER DAILY'S

- **Bring** to camp
 - Lunch & snacks
 - Water bottle
- **Leave** at home
 - Electronics
 - Toys/Sports equipment
 - Stuffed animals/blankets
- **Wear** closed toed shoes; no Crocs.



GUARDIAN DAILY'S

- Please sign your camper in/out daily with photo I.D. in the front lobby of the center.
- Check with staff about any reminders or reports.

CAMP HOURS

- **Camp** 7:30 a.m. - 6 p.m.
 - **Morning announcements** 9:15 a.m.
 - **Lunch** 11:30 a.m.
 - **Snacks** 9 a.m. & 3 p.m.



SPECIAL EVENTS

- **Dress Up** each day to help celebrate the holiday
- **Swimming**
 - GPS 3 & 4 on Tuesday
 - GPS 1 & 2 on Wednesday
- Bus **Field Trip** on Thursday to Lakes Park & Gator Lanes
 - All GPS
 - Please come prepared and be to camp on time



GUEST SPEAKERS

- Shell Museum



REMINDERS

- Please label all your camper's belongings; i.e. water bottle, camp shirt, etc.
- Be sure to check the lost and found before your last day.



CAMPER SIGN-IN/OUT POLICY

A parent or guardian is required to sign in and sign out each camper daily. Only people who have previously been listed on the Supplemental Information Sheet will be permitted to sign for your child at pick up. Photo ID will be required. Changes must be submitted in writing.

OLGA TRADITIONAL CAMP WEEK #5

CAMP WILDERNESS

IMPORTANT ANNOUNCEMENTS & REMINDERS

Welcome to camp! Please check the sign in sheet to see which group you are in this week!

Don't forget to pack a bathing suit, towel, and sunscreen for your group's swim day. Also, we have a field trip on Thursday.

Monday
July 13



Camp Do's and Don'ts -
Who and What to Know

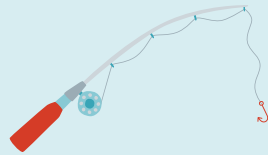
Group Craft -
Nature Drawing



Guest Speaker -
Captains for Clean Water
GPS 1 & 2 at 1 p.m.
GPS 3 & 4 at 1:45 p.m.

Tuesday
July 14

Fishing Challenges



Swimming at
Tice Community Pool
GPS 3 & 4
12:30-2:30 p.m.
Vans leave at noon
Vans return at 3 p.m.



Wednesday
July 15

Let's Play
Foxes and Squirrels!



Swimming at
Tice Community Pool
GPS 1 & 2
12:30-2:30 p.m.
Vans leave at noon
Vans return at 3 p.m.



Thursday
July 16

Field Trip
ALL GROUPS
Brightwater Lagoon
10 a.m. - 3 p.m.
Bus leaves camp at 9:45 a.m.
Bus returns at 3:15 p.m.

Don't forget to bring:
Cold lunch
Insulated water bottle
Swimsuit
Towel
Sunscreen
Change of clothes
Sneakers & sandals



Friday
July 17

Guest Speaker -
Wilderness Explorers with
Ms. Brooke
GPS 3 & 4 at 9:30 a.m.
GPS 1 & 2 at 10:30 a.m.



Guest Speaker -
Animal Tracking with
Ms. Amanda
GPS 3 & 4 at 1 p.m.
GPS 1 & 2 at 2 p.m.



- **Camp Hours** 7:30 a.m. - 6 p.m. | **Lunch** 11:30 a.m. | **Snack** 9 a.m. & 3 p.m.
- Anyone signing out a camper **must show photo I.D.**
- Have questions? Refer to the "How to have a Perfect Week at Camp" or Parent Guide documents.
- Calendars are subject to change.



CAMP DIRECTOR:

Becca Wemer | BWemer@leegov.com

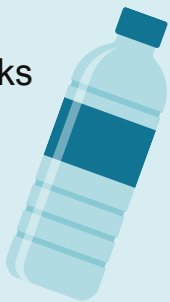
OLGA COMMUNITY CENTER TRADITIONAL CAMP
(239) 694-2291

PERFECT WEEK AT TRADITIONAL CAMP

CAMP NAME WEEK #5

CAMPER DAILY'S

- **Bring** to camp
 - Lunch & snacks
 - Water bottle
- **Leave** at home
 - Electronics
 - Toys/Sports equipment
 - Stuffed animals/blankets
- **Wear** closed toed shoes; no Crocs.



GUARDIAN DAILY'S

- Please sign your camper in/out daily with photo I.D. in the front lobby of the center.
- Check with staff about any reminders or reports.

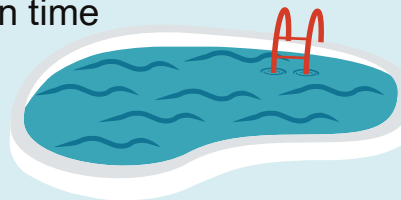
CAMP HOURS

- **Camp** 7:30 a.m. - 6 p.m.
 - **Morning announcements** 9:15 a.m.
 - **Lunch** 11:30 a.m.
 - **Snacks** 9 a.m. & 3 p.m.



SPECIAL EVENTS

- **Swimming**
 - GPS 3 & 4 on Tuesday
 - GPS 1 & 2 on Wednesday
- **Field Trip** on Thursday to Brightwater Lagoon
 - All GPS
 - Please come prepared and be to camp on time



GUEST SPEAKERS

- Captains for Clean Water
- LCPR Ranger Roy - Fishing Challenges
- LCPR Ms. Brooke - Wilderness Explorers
- LCPR Ms. Amanda - Animal Tracking

REMINDERS

- Please label all your camper's belongings; i.e. water bottle, camp shirt, etc.
- Be sure to check the lost and found before your last day.



CAMPER SIGN-IN/OUT POLICY

A parent or guardian is required to sign in and sign out each camper daily. Only people who have previously been listed on the Supplemental Information Sheet will be permitted to sign for your child at pick up. Photo ID will be required. Changes must be submitted in writing.

OLGA TRADITIONAL CAMP WEEK #6

CAMP TALENT

IMPORTANT ANNOUNCEMENTS & REMINDERS

Welcome to camp! Please check the sign in sheet to see which group you are in this week!

Don't forget to pack a bathing suit, towel, and sunscreen for your group's swim day. Also, please bring cash for Kona Ice on Thursday.

**Monday
July 20**



Camp Do's and Don'ts -
Who and What to Know

Group Craft -
My Mini Microphone

Camp Karaoke



Talent Show Sign-Ups
After Lunch

**Tuesday
July 21**

Practice for the
Talent Show

Charades with
GPS 1 & 2

Swimming at
Tice Community Pool
GPS 3 & 4
12:30-2:30 p.m.
Vans leave at noon
Vans return at 3 p.m.



**Wednesday
July 22**

Practice for the
Talent Show

Charades with
GPS 3 & 4

Swimming at
Tice Community Pool
GPS 1 & 2
12:30-2:30 p.m.
Vans leave at noon
Vans return at 3 p.m.



**Thursday
July 23**

Practice for the
Talent Show

Guest Speaker -
Lee County Elections
GPS 1 & 2 at 9:30 a.m.
GPS 3 & 4 at 10:30 a.m.



Kona Ice
1 p.m.
\$5-\$7



**Friday
July 24**

Practice for the
Talent Show

Talent Show
1:30 p.m.
Parents/Guardians
are invited!



- **Camp Hours** 7:30 a.m. - 6 p.m. | **Lunch** 11:30 a.m. | **Snack** 9 a.m. & 3 p.m.
- Anyone signing out a camper **must show photo I.D.**
- Have questions? Refer to the "How to have a Perfect Week at Camp" or Parent Guide documents.
- Calendars are subject to change.



CAMP DIRECTOR:

Becca Wemer | BWemer@leegov.com

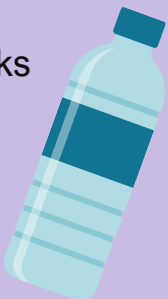
OLGA COMMUNITY CENTER TRADITIONAL CAMP
(239) 694-2291

PERFECT WEEK AT TRADITIONAL CAMP

OLGA WEEK #6

CAMPER DAILY'S

- **Bring** to camp
 - Lunch & snacks
 - Water bottle
- **Leave** at home
 - Electronics
 - Toys/Sports equipment
 - Stuffed animals/blankets
- **Wear** closed toed shoes; no Crocs.



GUARDIAN DAILY'S

- Please sign your camper in/out daily with photo I.D. in the front lobby of the center.
- Check with staff about any reminders or reports.

CAMP HOURS

- **Camp** 7:30 a.m. - 6 p.m.
 - **Morning announcements** 9:15 a.m.
 - **Lunch** 11:30 a.m.
 - **Snacks** 9 a.m. & 3 p.m.



SPECIAL EVENTS

- **Swimming**
 - GPS 3 & 4 on Tuesday
 - GPS 1 & 2 on Wednesday
- **Kona Ice** on Thursday
 - Bring cash \$5 - \$8 to participate
- **Talent Show** on Friday
 - Sign up on Monday
 - Parents/Guardians Invited



GUEST SPEAKERS

- Lee County Elections



REMINDERS

- Please label all your camper's belongings; i.e. water bottle, camp shirt, etc.
- Be sure to check the lost and found before your last day.



CAMPER SIGN-IN/OUT POLICY

A parent or guardian is required to sign in and sign out each camper daily. Only people who have previously been listed on the Supplemental Information Sheet will be permitted to sign for your child at pick up. Photo ID will be required. Changes must be submitted in writing.

OLGA TRADITIONAL CAMP WEEK #7

CAMP SPIRIT WEEK IMPORTANT ANNOUNCEMENTS & REMINDERS

Welcome to camp! Please check the sign in sheet to see which group you are in this week!

Please leave bikes, scooters, etc. at home on Wednesday that are not man-powered. Please check lost and found before your last day of camp.

**Monday
July 27**



Dress Up:
Favorite Color

Camp Do's and Don'ts -
Who and What to Know

Guest Speaker -
Lee County
Animal Services
All GPS 1 p.m.

**Tuesday
July 28**

Dress Up:
Wacky Tacky

Let's Play
Pirates of the Carribean!

Service Learning Project -
Cat Toys



Don't forget to check lost &
found before your last day



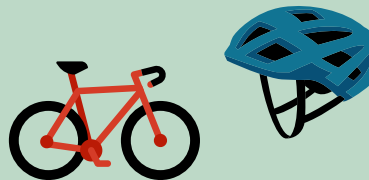
**Wednesday
July 29**

Dress Up:
Sport Team

Bike Day!

You are welcome to bring
a manpowered:

Bike
Rollerblades/Skates
Scooter
Skateboard
HELMETS ARE
MANDATORY



**Thursday
July 30**

Dress Up:
Favorite Counselor

Let's Play
Moon Monster!



Lee County Sheriff Ice
Cream Truck
1:30 p.m.



**Friday
July 31**

Dress Up:
Pajama

Last Day of Camp

Movie
Title TBD



GOODBYE

- **Camp Hours** 7:30 a.m. - 6 p.m. | **Lunch** 11:30 a.m. | **Snack** 9 a.m. & 3 p.m.
- Anyone signing out a camper **must show photo I.D.**
- Have questions? Refer to the "How to have a Perfect Week at Camp" or Parent Guide documents.
- Calendars are subject to change.



CAMP DIRECTOR:

Becca Wemer | BWemer@leegov.com

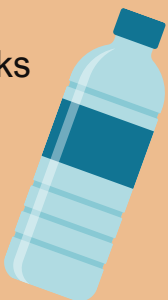
OLGA COMMUNITY CENTER TRADITIONAL CAMP
(239) 694-2291

PERFECT WEEK AT TRADITIONAL CAMP

OLGA WEEK #7

CAMPER DAILY'S

- **Bring** to camp
 - Lunch & snacks
 - Water bottle
- **Leave** at home
 - Electronics
 - Toys/Sports equipment
 - Stuffed animals/blankets
- **Wear** closed toed shoes; no Crocs.



GUARDIAN DAILY'S

- Please sign your camper in/out daily with photo I.D. in the front lobby of the center.
- Check with staff about any reminders or reports.

CAMP HOURS

- **Camp** 7:30 a.m. - 6 p.m.
 - **Morning announcements** 9:15 a.m.
 - **Lunch** 11:30 a.m.
 - **Snacks** 9 a.m. & 3 p.m.



SPECIAL EVENTS

- **Dress up for Spirit Week**
- **Service Learning Week - Cat toys**
- **Bike Day**
 - Helmet required
 - Self propelled equipment only



GUEST SPEAKERS

- Lee County Animal Services
- Lee County Sheriff Office



REMINDERS

- This is the last week of camp.
- Please label all your camper's belongings; i.e. water bottle, camp shirt, etc.
- Be sure to check the lost and found before your last day.



CAMPER SIGN-IN/OUT POLICY

A parent or guardian is required to sign in and sign out each camper daily. Only people who have previously been listed on the Supplemental Information Sheet will be permitted to sign for your child at pick up. Photo ID will be required. Changes must be submitted in writing.