

MATLACHA TRADITIONAL CAMP WEEK #1

IMPORTANT ANNOUNCEMENTS & REMINDERS

Parents please apply sunscreen before you drop your camper off.
Bring water bottle, pack morning & afternoon snack & lunch everyday.
Wear closed toe shoes, No electronics

**Monday
June 15**

WELCOME

**GUEST
SPEAKER**

10 a.m.



**Tuesday
June 16**

Pine Island Pool
leave by 10:30 a.m.
bring lunch, water
bottle, towel,
sunscreen & \$1 for
ice cream



**Wednesday
June 17**

**GUEST
SPEAKER**



10 a.m.

Dream Catcher
Craft



**Thursday
June 18**

Pine Island Pool
leave by 10:30 a.m.
bring lunch, water
bottle, towel,
sunscreen.



2 p.m.



Bring \$3-\$5

**Friday
June 19**



Bring \$3-\$5
10:30 a.m.

**GUEST
SPEAKER**

1:30 p.m.



- **Camp Hours** 7:30 a.m. - 6 p.m.
- Have questions? Refer to the "How to have a Perfect Week at Camp" document.
- Calendars are subject to change



CAMP DIRECTOR:
Tiffany Vance | Tvance@leegov.com
MATLACHA COMMUNITY CENTER / TRADITIONAL

PERFECT WEEK AT MATLACHA COMMUNITY CENTER

TRADITIONAL CAMP WEEK 1

GUARDIAN / CAMPER DAILY'S

- Parents/Guardians please read camp calendar and weekly email for any updates.
- Parents please send water bottle, morning & afternoon snack & lunch daily.



- Parents make sure to apply sunscreen on your child before dropping them off at camp.



CAMP HOURS

- Camp hours are 7:30 a.m. - 6 p.m. Monday through Friday
- Morning snack is at 8:30 a.m.
- Lunch is at 12 p.m.
- Afternoon snack is at 3:30 p.m.

SPECIAL EVENTS

- On Tuesday and Thursday at 10:30 a.m. we will shuttle to the Pine Island Pool. Campers, please bring swimsuit, towel, sunscreen, and \$1 for ice cream.



- Thursday we will stop at Spots Ice Cream Shoppe after the pool, please bring \$3-\$5.

GUEST SPEAKERS

- **Monday** at 10 a.m.
 - LCEC
- **Wednesday** at 10 a.m.
 - Conservation 20/20
- **Friday** at 10:30 a.m.
 - Southern Sno Balls
 - Please bring \$3-\$5



- **Friday** at 1 p.m.
 - Lee County Library System



REMINDERS

- Parents please remember to write your campers name on their personal items.
- Parents please check our lost and found for any missing items.



CAMPER SIGN-IN/OUT POLICY

A parent or guardian is required to sign in and sign out each camper daily. Only people who have previously been listed on the Supplemental Information Sheet will be permitted to sign for your child at pick up. Photo ID will be required. Changes must be submitted in writing.

MATLACHA TRADITIONAL CAMP WEEK #2

IMPORTANT ANNOUNCEMENTS & REMINDERS

Parents please apply sunscreen before you drop your camper off.
Bring water bottle, pack morning & afternoon snack & lunch everyday.
Wear closed toe shoes, No electronics

Monday
June 22

**GUEST
SPEAKER**

10 a.m.



Paint with Chalk



Tuesday
June 23

Pine Island Pool
leave by 10:30 a.m.
return by 2 p.m.
bring lunch, water
bottle, towel,
sunscreen & \$1 for
ice cream



Wednesday
June 24

All Camp Field Trip
wear camp t-shirt,
bring a water bottle
& pack a lunch
leave by 10 a.m.



Return by 4 p.m.

Thursday
June 25

Pine Island Pool
leave by 10:30 a.m.
bring water bottle,
towel, sunscreen.



2 p.m.



Bring \$3-\$5

Friday
June 26



Bring \$3-\$5
10:30 a.m.

Arts n Crafts
Sun Catchers



- **Camp Hours** 7:30 a.m. - 6 p.m.
- Have questions? Refer to the "How to have a Perfect Week at Camp" document.
- Calendars are subject to change



CAMP DIRECTOR:

Tiffany Vance | Tvance@leegov.com

MATLACHA COMMUNITY CENTER / TRADITIONAL
Phone Number

PERFECT WEEK AT PINE ISLAND ELEMENTARY

TRADITIONAL CAMP WEEK 2

GUARDIAN/CAMPER DAILY'S

- Parents/Guardians please read camp calendar and weekly email for any updates.
- Parents please send water bottle, morning & afternoon snack & lunch daily.



- Parents make sure to apply sunscreen on your child before dropping them off at camp.



CAMP HOURS

- Camp hours are 7:30 a.m. - 6 p.m. Monday through Friday
- Morning snack is at 8:30 a.m.
- Lunch is at 12 p.m.
- Afternoon snack is at 3:30 p.m.

SPECIAL EVENTS

- **Tuesday** and **Thursday** at 10:30 a.m. we will shuttle to the Pine Island Pool. Campers, please bring swimsuit, towel, sunscreen, and \$1 for ice cream.
- **Wednesday** all camp field trip
- We will leave by 9:30 a.m. return by 4 p.m.



- **Thursday** we will stop at Spots Ice Cream Shoppe after the pool, please bring \$3-\$5.

GUEST SPEAKERS

- Monday at 10 a.m.
 - National Shell Museum



- Friday at 10:30 a.m.
 - Southern Sno Balls
 - Please bring \$3-\$5



REMINDERS

- Parents please remember to write your campers name on their personal items.
- Parents please check our lost and found for any missing items.

CAMPER SIGN-IN/OUT POLICY

A parent or guardian is required to sign in and sign out each camper daily. Only people who have previously been listed on the Supplemental Information Sheet will be permitted to sign for your child at pick up. Photo ID will be required. Changes must be submitted in writing.



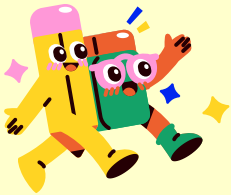
MATLACHA TRADITIONAL CAMP WEEK #3

IMPORTANT ANNOUNCEMENTS & REMINDERS

Parents please apply sunscreen before you drop your camper off.
Bring water bottle, pack morning & afternoon snack & lunch everyday.
Wear closed toe shoes, No electronics

**Monday
June 29**

Build Together Play
Together project



**GUEST
SPEAKER**

10 a.m.

**Household
Chemical Waste
and Electronics**
RECYCLING FACILITY

**Tuesday
June 30**

Pine Island Pool
leave by 10:30 a.m.
bring water bottle,
towel, sunscreen
& \$1 for ice cream.



**Wednesday
July 1**

Fishing with
Ranger Priddy
on the Pier
from
10 a.m. - 12 p.m.



**Thursday
July 2**

Pine Island Pool
leave by 10:30 a.m.
bring water bottle,
towel, sunscreen.



2 p.m.

Spots
ICE CREAM, CREPES & SAUCES

Bring \$3-\$5

**Friday
July 3**

No Camp



- **Camp Hours** 7:30 a.m. - 6 p.m.
- Have questions? Refer to the “How to have a Perfect Week at Camp” document.
- Calendars are subject to change



CAMP DIRECTOR:

Tiffany Vance | Tvance@leegov.com

MATLACHA COMMUNITY CENTER /TRADITIONAL

PERFECT WEEK AT PINE ISLAND ELEMENTARY

TRADITIONAL CAMP WEEK 3

GUARDIAN/CAMPER DAILY'S

- Parents/Guardians please read camp calendar and weekly email for any updates.
- Parents please send water bottle, morning & afternoon snack & lunch daily.



- Parents make sure to apply sunscreen on your child before dropping them off at camp.



CAMP HOURS

- Camp hours are 7:30 a.m. - 6 p.m. Monday through Friday
- Morning snack is at 8:30 a.m.
- Lunch is at 12 p.m.
- Afternoon snack is at 3:30 p.m.

SPECIAL EVENTS

- **Tuesday** and **Thursday** at 10:30 a.m. we will shuttle to the Pine Island Pool. Campers, please bring swimsuit, towel, sunscreen, and \$1 for ice cream.



- **Thursday** we will stop at Spots Ice Cream Shoppe after the pool, please bring \$3-\$5.

GUEST SPEAKERS

- **Monday** at 10a.m.
 - Household Chemical Waste and Electronics Recycling Facility



- **Wednesday** at 10 a.m.
 - Fishing on the Pier with Lee County Rangers



REMINDERS

- **There will be no camp on Friday July 3**
- Parents please remember to write your campers name on their personal items.
- Parents please check our lost and found for any missing items.

CAMPER SIGN-IN/OUT POLICY

A parent or guardian is required to sign in and sign out each camper daily. Only people who have previously been listed on the Supplemental Information Sheet will be permitted to sign for your child at pick up. Photo ID will be required. Changes must be submitted in writing.



MATLACHA TRADITIONAL CAMP WEEK #4

IMPORTANT ANNOUNCEMENTS & REMINDERS

Parents please apply sunscreen before you drop your camper off.
Bring water bottle, pack morning & afternoon snack & lunch everyday.
Wear closed toe shoes, No electronics

**Monday
July 6**

Outdoor Group Games



Arts n crafts



**Tuesday
July 7**

Pine Island Pool
leave by 10:30 a.m.
bring lunch, water
bottle, towel,
sunscreen,
& water bottle
& \$1 for ice cream.



**Wednesday
July 8**

All camp field trip
leave by 10:30 a.m.
return by 4 p.m.
wear your
camp t-Shirt



**Day of Week
July 9**

Pine Island Pool
leave by 10:30 a.m.
bring water bottle,
towel, sunscreen



2 p.m.



Bring \$3-\$5

**Day of Week
July 10**

Butterfly
Presentation
9:30 a.m.



**GUEST
SPEAKER**



Bring \$3-\$5
10:30 a.m.

- **Camp Hours** 7:30 a.m. - 6 p.m.
- Have questions? Refer to the "How to have a Perfect Week at Camp" document.
- Calendars are subject to change



CAMP DIRECTOR:
Tiffany Vance | Tvance@leegov.com
MATLACHA COMMUNITY CENTER /TRADITIONAL

PERFECT WEEK AT PINE ISLAND ELEMENTARY

TRADITIONAL CAMP WEEK 4

GUARDIAN/CAMPER DAILY'S

- Parents/Guardians please read camp calendar and weekly email for any updates.
- Parents please send water bottle, morning & afternoon snack & lunch daily.



- Parents make sure to apply sunscreen on your child before dropping them off at camp.



CAMP HOURS

- Camp hours are 7:30 a.m. - 6 p.m. Monday through Friday
- Morning snack is at 8:30 a.m.
- Lunch is at 12 p.m.
- Afternoon snack is at 3:30 p.m.

SPECIAL EVENTS

- **Tuesday and Thursday** at 10:30 a.m. we will shuttle to the Pine Island Pool. Campers, please bring swimsuit, towel, sunscreen, and \$1 for ice cream.
- **Wednesday** all camp field trip. Leave by 10:30 a.m. return by 4 p.m.



- **Thursday** we will stop at Spots Ice Cream Shoppe after the pool, please bring \$3-\$5

GUEST SPEAKERS

- **Friday** at 9:30 a.m.
 - Ranger Rudd Butterfly Presentation



REMINDERS

- Parents please remember to write your campers name on their personal items.
- Parents please check our lost and found for any missing items.

CAMPER SIGN-IN/OUT POLICY

A parent or guardian is required to sign in and sign out each camper daily. Only people who have previously been listed on the Supplemental Information Sheet will be permitted to sign for your child at pick up. Photo ID will be required. Changes must be submitted in writing.



MATLACHA TRADITIONAL CAMP WEEK #5

IMPORTANT ANNOUNCEMENTS & REMINDERS

Parents please apply sunscreen before you drop your camper off.
Bring water bottle, pack morning & afternoon snack & lunch everyday.
Wear closed toe shoes, No electronics

**Monday
July 13**

Tie Dye
Bring an old T-Shirt



Bingo



**Tuesday
July 14**

Pine Island Pool
leave by 10:30 a.m.
bring water bottle,
towel, sunscreen,
& \$1 for ice cream.



**Wednesday
July 15**

All camp field trip
leave by 9:30 a.m.
return by 4 p.m.
wear camp t- shirt,
comfortable
shoes, bring
water bottle and
pack a lunch.



**Thursday
July 16**

Pine Island Pool
leave by 10:30 a.m.
bring water bottle,
towel, sunscreen



2 p.m.



Bring \$3-\$5

**Friday
July 17**



10 a.m.
Bring \$3-\$5

**GUEST
SPEAKER**

1 p.m.



- **Camp Hours** 7:30 a.m. - 6 p.m.
- Have questions? Refer to the “How to have a Perfect Week at Camp” document.
- Calendars are subject to change



CAMP DIRECTOR:
Tiffany Vance | Tvance@leegov.com
MATLACHA COMMUNITY CENTER / TRADITIONAL

PERFECT WEEK AT PINE ISLAND ELEMENTARY

TRADITIONAL CAMP WEEK 5

GUARDIAN/CAMPER DAILY'S

- Parents/Guardians please read camp calendar and weekly email for any updates.
- Parents please send water bottle, morning & afternoon snack & lunch daily.



- Parents make sure to apply sunscreen on your child before dropping them off at camp.



CAMP HOURS

- Camp hours are 7:30 a.m. - 6 p.m. Monday through Friday
- Morning snack is at 8:30am
- Lunch is at 12 p.m.
- Afternoon snack is at 3:30 p.m.

SPECIAL EVENTS

- **Tuesday** and **Thursday** at 10:30 a.m. we will shuttle to the Pine Island Pool. Campers, please bring swimsuit, towel, sunscreen, and \$1 for ice cream.



- **Wednesday** all camp field trip to the leave by 9:30 a.m. return by 4:30 p.m.



- **Thursday** we will stop at Spots Ice Cream Shoppe after the pool, please bring \$3-\$5

GUEST SPEAKERS

- **Friday** at 10:30 a.m.
 - Southern Sno Balls
 - Please bring \$3-\$5.



- **Friday** at 1p.m.
 - 4-H



REMINDERS

- Parents please remember to write your campers name on their personal items.
- Parents please check our lost and found for any missing items.



CAMPER SIGN-IN/OUT POLICY

A parent or guardian is required to sign in and sign out each camper daily. Only people who have previously been listed on the Supplemental Information Sheet will be permitted to sign for your child at pick up. Photo ID will be required. Changes must be submitted in writing.

MATLACHA TRADITIONAL CAMP WEEK #6

IMPORTANT ANNOUNCEMENTS & REMINDERS

Parents please apply sunscreen before you drop your camper off.
Bring water bottle, pack morning & afternoon snack & lunch everyday.
Wear closed toe shoes, No electronics

**Monday
July 20**

Pinwheel craft



Ping Pong
Tournament



**Tuesday
July 21**

Pine Island Pool
leave by 10:30 a.m.
bring water bottle,
towel, sunscreen,
& \$1 for ice cream.



**Wednesday
July 22**

All camp field trip
leave by 9:15 a.m.
wear camp t-shirt,
bring water bottle
and pack a lunch.



return to camp
by 4 p.m.

**Thursday
July 23**

Pine Island Pool
leave by 10:30 a.m.
bring water bottle,
towel, sunscreen.



2 p.m.



Bring \$3-\$5

**Friday
July 24**



10:30 a.m.
Bring \$3-\$5



Kayaking with Mike
Hammond 10 a.m.
Bring extra pair of
shoes, clothes,
towel, sunscreen
and water bottle.

- **Camp Hours** 7:30 a.m. - 6 p.m.
- Have questions? Refer to the "How to have a Perfect Week at Camp" document.
- Calendars are subject to change



CAMP DIRECTOR:

Tiffany Vance | Tvance@leegov.com

MATLACHA COMMUNITY CENTER / TRADITIONAL

PERFECT WEEK AT PINE ISLAND ELEMENTARY

TRADITIONAL CAMP WEEK 6

GUARDIAN/CAMPER DAILY'S

- Parents/Guardians please read camp calendar and weekly email for any updates.
- Parents please send water bottle, morning & afternoon snack & lunch daily.



- Parents make sure to apply sunscreen on your child before dropping them off at camp.



CAMP HOURS

- Camp hours are 7:30 a.m. - 6 p.m. Monday through Friday
- Morning snack is at 8:30 a.m.
- Lunch is at 12 p.m.
- Afternoon snack is at 3:30 p.m.

SPECIAL EVENTS

- **Tuesday** and **Thursday** at 10:30 a.m. we will shuttle to the Pine Island Pool. Campers, please bring swimsuit, towel, sunscreen, and \$1 for ice cream.



- **Wednesday** all camp field trip leave by 9:15 a.m. return by 4 p.m.



- **Thursday** we will stop at Spots Ice Cream Shoppe after the pool, please bring \$3-\$5

GUEST SPEAKERS

- **Friday** at 10 a.m.
 - Kayaking with Mike Hammond



- **Friday** 10:30 a.m.
 - Southern Sno Balls
 - Please bring \$3-\$5



REMINDERS

- Parents please remember to write your campers name on their personal items.
- Parents please check our lost and found for any missing items.



CAMPER SIGN-IN/OUT POLICY

A parent or guardian is required to sign in and sign out each camper daily. Only people who have previously been listed on the Supplemental Information Sheet will be permitted to sign for your child at pick up. Photo ID will be required. Changes must be submitted in writing.

MATLACHA TRADITIONAL CAMP WEEK #7

IMPORTANT ANNOUNCEMENTS & REMINDERS

Parents please apply sunscreen before you drop your camper off.
Bring water bottle, pack morning & afternoon snack & lunch everyday.
Wear closed toe shoes, No electronics

**Monday
July 27**

Obstacle course



Group Game



**Tuesday
July 28**

Pine Island Pool
leave by 10:30 a.m.
bring water bottle,
towel, sunscreen
& \$1 for ice cream .

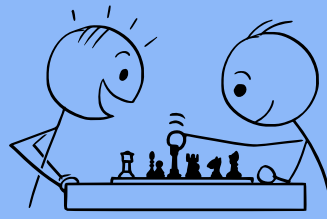


**Wednesday
July 29**

Make Friendship
Bracelets



Chess



**Thursday
July 30**

Pine Island Pool
leave by 10:30 a.m.
bring water bottle,
towel, sunscreen.



2 p.m.



Bring \$3-\$5

**Friday
July 31**



10:30 a.m.
Bring \$3-\$5

End of camp party!



- **Camp Hours** 7:30 a.m. - 6 p.m.
- Have questions? Refer to the "How to have a Perfect Week at Camp" document.
- Calendars are subject to change



CAMP DIRECTOR:

Tiffany Vance | Tvance@leegov.com

MATLACHA COMMUNITY CENTER / TRADITIONAL

PERFECT WEEK AT PINE ISLAND ELEMENTARY

TRADITIONAL CAMP WEEK 7

GUARDIAN/CAMPER DAILY'S

- Parents/Guardians please read camp calendar and weekly email for any updates.
- Parents please send water bottle, morning & afternoon snack & lunch daily.



- Parents make sure to apply sunscreen on your child before dropping them off at camp.



CAMP HOURS

- Camp hours are 7:30 a.m. - 6 p.m. Monday through Friday
- Morning snack is at 8:30 a.m.
- Lunch is at 12 p.m.
- Afternoon snack is at 3:30 p.m.

SPECIAL EVENTS

- **Tuesday and Thursday** at 10:30 a.m. we will shuttle to the Pine Island Pool. Campers, please bring swimsuit, towel, sunscreen, and \$1 for ice cream.



- **Thursday** we will stop at Spots Ice Cream Shoppe after the pool, please bring \$3-\$5.

GUEST SPEAKERS

- **Friday** at 10:30 a.m.
 - Southern Sno Balls
 - Please bring \$3-\$5



REMINDERS

LAST DAY OF CAMP 7/31

Parents please take a look at our wish list for party supplies

- Parents please remember to write your campers name on their personal items.
- Parents please check our lost and found for any missing items.

CAMPER SIGN-IN/OUT POLICY

A parent or guardian is required to sign in and sign out each camper daily. Only people who have previously been listed on the Supplemental Information Sheet will be permitted to sign for your child at pick up. Photo ID will be required. Changes must be submitted in writing.

