

MANATEE PARK WEEK 2

IMPORTANT ANNOUNCEMENTS & REMINDERS

Campers will get wet when the Fire Department visits. Pack a change of clothes, swimsuit, towel, and closed-toe shoes that can get wet. On Friday you are invited to a special presentation hosted by the campers. Seating starts at 2:45 p.m. and Design presentation starts promptly at 3 p.m. Campers are free to leave after the presentation.

Mon. June 22
Pollinators

9 a.m. Ranger Program



Butterfly Game



2:15 p.m. Design-A-
Butterfly Garden



Tue. June 23
Bees

Bee game



Make a pollinator house

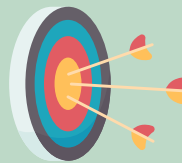


Ice Cream Time!
Bring \$4 (Gift Shop)



Wed. June 24
Archery & Fire Dept.

8:30 a.m. Archery



12:30 p.m. Fire
Department



Paint a Palm Frond



Thurs. June 25
Field Trip

Lovers Key State Park
Beach Bird Watching



Visit the Discovery
Center



Fri. June 26
Kindness Day

Bug Collecting Program



Kindness Award



Doors open at 2:45 p.m.
Design Presentation at 3
p.m.



- **Camp Hours** 8 a.m. - 4:30 p.m.
- Lunch: Noon - 12:30 p.m. | Snack: 10 - 10:15 a.m. & 2 - 2:15 p.m.
- Photo ID required at sign out by anyone picking up a camper.
- Calendars are subject to change.



CAMP DIRECTOR:

Zuliana Mueller | ZMueller@leegov.com

MANATEE PARK SPECIALTY CAMP

(239) 229 0493

PERFECT WEEK AT MANATEE CAMP

MANATEE PARK WEEK #2

CAMPER DAILY'S

- Lunch: 12 p.m. - 12:30 p.m.
- Snacks at: 10 a.m. & 2 p.m.

GUARDIAN DAILY'S

- **Morning Checklist:**
- Food
- Water bottle
- Closed-toe shoes
- Towel
- Change of clothes
- Change of shoes
- Sunscreen
- Hat
- No flip-flops
- No Crocs (except for water days)

CAMP HOURS

- Camp Hours: 8 a.m. - 4:30 p.m.

SPECIAL EVENTS

- Archery on Wednesday.
- Fire Department on Wednesday: Please pack: towel, sunscreen, change of clothes and shoes.
- Field Trip on Thursday.
- Garden Design Presentation and Award Ceremony on Friday: Doors open at 2:45 p.m. and Presentation starts promptly at 3 p.m. Campers are free to go after the play.

GUEST SPEAKERS

- Park Ranger Program on Monday.
- Big Waters Land Trust: Bug Collection Program on Friday.

REMINDERS

- ID required for check out.
- Please label all of your camper's items.
- Check for daily reminders.
- Wear camp T-shirt on Friday



CAMPER SIGN-IN/OUT POLICY

A parent or guardian is required to sign in and sign out each camper daily. Only people who have previously been listed on the Supplemental Information Sheet will be permitted to sign for your child at pick up. Photo ID will be required. Changes must be submitted in writing.

MANATEE PARK WEEK 5

IMPORTANT ANNOUNCEMENTS & REMINDERS

Campers will get wet when the Fire Department visits. Pack a change of clothes, swimsuit, closed-toe shoes that can get wet. You are invited to a special presentation hosted by the campers. Seating starts at 2:45 p.m. and presentation starts promptly at 3 p.m. Campers are free to leave after the presentation.

Mon. July 13
Shark

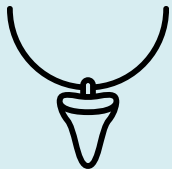
Ranger Program



Game: Sharks and Minnows



Shark Teeth Craft



Tue. July 14
Cetacean

8:30 a.m. Kayaking



Sound Map Activity



Ice Cream time
Gift Shop

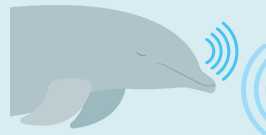


Wed. July 15
Dolphin

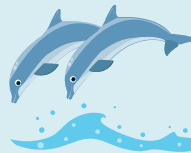
8:30 a.m. Fishing



Echolocation Activity



Dolphin Race



Thur. July 16
Sanibel

8:30 a.m. Field Trip!
Ding Darling Tour



Bailey-Mathews
National Shell Museum
and Aquarium



Fri. July 17
Presentation

Ocean Trivia



12:30 p.m. Fire
Department



Doors open at 2:45 p.m.
Presentation starts
at 3 p.m.



- **Camp Hours** 8 a.m. - 4:30 p.m.
- Lunch: noon - 12:30 p.m. | Snack: 10 - 10:15 a.m. & 2 - 2:15 p.m.
- Photo ID required at sign out by anyone picking up a camper.
- Calendars are subject to change.



CAMP DIRECTOR:

Zuliana Mueller | ZMueller@leegov.com

MANATEE PARK, SPECIALTY CAMP

(239) 229 0493

PERFECT WEEK AT MANATEE CAMP

MANATEE PARK WEEK 5

CAMPER DAILY'S

- Lunch: 12 p.m. - 12:30 p.m.
- Snacks at: 10 a.m. & 2 p.m.

GUARDIAN DAILY'S

- **Morning Checklist:**
- Food
- Water bottle
- Closed-toe shoes
- Towel
- Change of clothes
- Change of shoes
- Sunscreen
- Hat
- No flip-flops
- No Crocs (except for water days)

CAMP HOURS

- Camp Hours: 8 a.m. - 4:30 p.m.

GUEST SPEAKERS

- Ranger Program: Sharks on Monday.
- Horsehoecrab presentation on Friday.

SPECIAL EVENTS

- Kayaking on Tuesday.
- **Tuesday: Bring \$4 for ice cream.**
- Fishing on Wednesday.
- Field Trip to Sanibel on Thursday.
- Fire Department on Friday.
- Diorama Presentation and Ceremony on Friday: Doors open at 2:45 p.m. and Play starts promptly at 3 p.m. Campers are free to go after play.

REMINDERS

- ID required for check out.
- Please label all of your camper's items.
- Check for daily reminders.
- Wear camp T-shirt on Thursday!



CAMPER SIGN-IN/OUT POLICY

A parent or guardian is required to sign in and sign out each camper daily. Only people who have previously been listed on the Supplemental Information Sheet will be permitted to sign for your child at pick up. Photo ID will be required. Changes must be submitted in writing.