

# CAMP SUNSHINE WEEK 1

## IMPORTANT ANNOUNCEMENTS & REMINDERS

Pack a change of clothes, swimsuit, towel, and closed-toe shoes that can get wet. Please label all items.  
On field trip days, campers typically return by 3 p.m.

### Mon. June 15 Field Trip

Get to know each other.  
Play Icebreakers with  
your group today!



### Tue. June 16 Swim Day

9 a.m. Let's get it  
started!



Pool Day 11 a.m.



Sensory Play



### Wed. June 17 Field Trip

Movie Day



Migration or  
Transformers One

\$5 Snack Pack  
(Optional)

Animal Encounters at  
Dunbar Library



### Thurs. June 18 Arts and Crafts

9:30 a.m. Craft Time



Pool Day 11 a.m.



Game: Hide and Seek



### Fri. June 19 Pool Day

Character  
Development:  
Courage



Pool Day 11 p.m.



- **Camp Hours 8 a.m. - 4:30 p.m.**
- Lunch: noon - 12:30 p.m. | Snack: 10 - 10:15 a.m. & 3 - 3:15 p.m.
- Photo ID required at sign out by anyone picking up a camper.
- Calendars are subject to change.



### CAMP DIRECTOR:

U. Shay Robertson | [URobertson@leegov.com](mailto:URobertson@leegov.com)

**KARL J. DREWS COMMUNITY CENTER**

(239) 707-7493

# PERFECT WEEK AT CAMP SUNSHINE

# CAMP SUNSHINE WEEK #1

## CAMPER DAILY'S

- Lunch: 12 p.m. - 12:30 p.m.
- Snacks at: 10 a.m. & 3 p.m.

## GUARDIAN DAILY'S

- **Morning Checklist:**
- Food
- Water bottle
- Closed-toe shoes
- Towel
- Change of clothes
- Change of shoes
- Sunscreen
- Hat
- No flip-flops
- No Crocs (except for water days)

## CAMP HOURS

- Camp Hours: 8 a.m. - 4:30 p.m.

## SPECIAL EVENTS

- Wednesday is Movie Day at Regal Gulf Coast. Snack Packs (\$5.00) are optional.
- Monday's trip is to Headpinz Bowling. Please wear socks and sneakers.

## REMINDERS

- ID required for check out.
- Please label all of your camper's items.
- Check for daily reminders.
- Wear camp T-shirt on Monday and Wednesday.



## CAMPER SIGN-IN/OUT POLICY

A parent or guardian is required to sign in and sign out each camper daily. Only people who have previously been listed on the Supplemental Information Sheet will be permitted to sign for your child at pick up. Photo ID will be required. Changes must be submitted in writing.

# CAMP SUNSHINE WEEK 2

## IMPORTANT ANNOUNCEMENTS & REMINDERS

Pack a change of clothes, swimsuit, towel, and closed-toe shoes that can get wet. Please label all items.  
On field trip days, campers typically return by 3 p.m.

### Mon. June 22 Field Trip

10 a.m. Mosquito Control Guest Speaker



Chuck E Cheese



### Tue. June 23 Swim Day

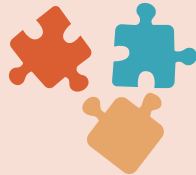
9 a.m. Let's get it started!



Pool Day 11 a.m.



Sensory Play



### Wed. June 24 Field Trip

Movie Day



Sonic the Hedgehog or Dog Man

\$5 Snack Pack (Optional)

Headpinz Bowling



### Thurs. June 25 Arts and Crafts

4-H Guest Speaker



Pool Day 11 a.m.



Craft Time



### Fri. June 26 Swim Day

Bingo



Board Games



Pool Day 11 p.m.



- **Camp Hours 8 a.m. - 4:30 p.m.**
- Lunch: noon - 12:30 p.m. | Snack: 10 - 10:15 a.m. & 3 - 3:15 p.m.
- Photo ID required at sign out by anyone picking up a camper.
- Calendars are subject to change.



**CAMP DIRECTOR:**

U. Shay Robertson | [URobertson@leegov.com](mailto:URobertson@leegov.com)

**KARL J. DREWS COMMUNITY CENTER**

(239) 707-7493

# PERFECT WEEK AT CAMP SUNSHINE

# CAMP SUNSHINE WEEK #2

## CAMPER DAILY'S

- Lunch: 12 p.m. - 12:30 p.m.
- Snacks at: 10 a.m. & 3 p.m.

## GUARDIAN DAILY'S

- **Morning Checklist:**
- Food
- Water bottle
- Closed-toe shoes
- Towel
- Change of clothes
- Change of shoes
- Sunscreen
- Hat
- No flip-flops
- No Crocs (except for water days)

## CAMP HOURS

- Camp Hours: 8 a.m. - 4:30 p.m.

## SPECIAL EVENTS

- Monday's trip is to Chuck E Cheese. Please wear socks and sneakers.
- Wednesday is Movie Day at Regal Gulf Coast. Snack Packs (\$5.00) are optional. Headpinz Bowling after the movie. Please wear socks and sneakers.

## GUEST SPEAKERS

- Lee County Mosquito Control
- Lee County 4-H

## REMINDERS

- ID required for check out.
- Please label all of your camper's items.
- Check for daily reminders.
- Wear camp T-shirt on Monday and Wednesday.



## CAMPER SIGN-IN/OUT POLICY

A parent or guardian is required to sign in and sign out each camper daily. Only people who have previously been listed on the Supplemental Information Sheet will be permitted to sign for your child at pick up. Photo ID will be required. Changes must be submitted in writing.

# CAMP SUNSHINE WEEK 3

## IMPORTANT ANNOUNCEMENTS & REMINDERS

Pack a change of clothes, swimsuit, towel, and closed-toe shoes that can get wet. Please label all items.  
On field trip days, campers typically return by 3 p.m.

### Mon. June 29 Field Trip

Get to know each other.  
Play Icebreakers with  
your group today!



Edison Mall Scavenger  
Hunt



### Tue. June 30 Arts and Crafts

9:30 a.m. Craft Time



Pool Day 11 a.m.



Game: 4 Corners



### Wed. July 1 Field Trip

Movie Day



Sonic the Hedgehog 2  
or The Garfield Movie

\$5 Snack Pack  
(Optional)

HeadPinz Bowling



### Thurs. July 2 Game Day

Bingo



Board Games



Card Games



### Fri. July 3 No Camp

4th of July!



Have a safe holiday!



Camp Sunshine does  
not meet.



- **Camp Hours 8 a.m. - 4:30 p.m.**
- Lunch: noon - 12:30 p.m. | Snack: 10 - 10:15 a.m. & 3 - 3:15 p.m.
- Photo ID required at sign out by anyone picking up a camper.
- Calendars are subject to change.



### CAMP DIRECTOR:

U. Shay Robertson | [URobertson@leegov.com](mailto:URobertson@leegov.com)

**KARL J. DREWS COMMUNITY CENTER**

(239) 707-7493

# PERFECT WEEK AT CAMP SUNSHINE

## CAMP SUNSHINE WEEK #3

### CAMPER DAILY'S

- Lunch: 12 p.m. - 12:30 p.m.
- Snacks at: 10 a.m. & 3 p.m.

### GUARDIAN DAILY'S

- **Morning Checklist:**
- Food
- Water bottle
- Closed-toe shoes
- Towel
- Change of clothes
- Change of shoes
- Sunscreen
- Hat
- No flip-flops
- No Crocs (except for water days)

### CAMP HOURS

- Camp Hours: 8 a.m. - 4:30 p.m.

### SPECIAL EVENTS

- Monday's trip is to Edison Mall. Wear comfortable shoes.
- Wednesday is Movie Day at Regal Gulf Coast. Snack Packs (\$5.00) are optional. Headpinz Bowling after the movie. Please wear socks and sneakers.

### REMINDERS

- ID required for check out.
- Please label all of your camper's items.
- Check for daily reminders.
- Wear camp T-shirt on Monday and Wednesday.
- There is no Camp on Friday, July 3.



### CAMPER SIGN-IN/OUT POLICY

A parent or guardian is required to sign in and sign out each camper daily. Only people who have previously been listed on the Supplemental Information Sheet will be permitted to sign for your child at pick up. Photo ID will be required. Changes must be submitted in writing.

# CAMP SUNSHINE WEEK 4

## IMPORTANT ANNOUNCEMENTS & REMINDERS

Pack a change of clothes, swimsuit, towel, and closed-toe shoes that can get wet. Please label all items.  
On field trip days, campers typically return by 3 p.m.

### Mon. July 6 Field Trip

Get to know each other.  
Play Icebreakers with  
your group today!



Lunch at McDonald's



### Tue. July 7 Swim Day

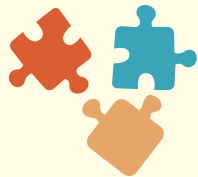
9 a.m. Let's get it  
started!



Pool Day 11 a.m.



Sensory Play



### Wed. July 8 Field Trip

Movie Day



The Bad Guys 2 or  
Smurfs

\$5 Snack Pack  
(Optional)

Headpinz Bowling



### Thurs. July 9 Arts and Crafts

9:30 a.m. Craft Time



Pool Day 11 a.m.



Game: Hide and Seek



### Fri. July 10 Swim Day

Character  
Development:  
Kindness



Pool Day 1 p.m.



- **Camp Hours 8 a.m. - 4:30 p.m.**
- Lunch: noon - 12:30 p.m. | Snack: 10 - 10:15 a.m. & 3 - 3:15 p.m.
- Photo ID required at sign out by anyone picking up a camper.
- Calendars are subject to change.



**CAMP DIRECTOR:**

U. Shay Robertson | [URobertson@leegov.com](mailto:URobertson@leegov.com)

**KARL J. DREWS COMMUNITY CENTER**

(239) 707-7493

# PERFECT WEEK AT CAMP SUNSHINE

# CAMP SUNSHINE WEEK #4

## CAMPER DAILY'S

- Lunch: 12 p.m. - 12:30 p.m.
- Snacks at: 10 a.m. & 3 p.m.

## GUARDIAN DAILY'S

- **Morning Checklist:**
- Food
- Water bottle
- Closed-toe shoes
- Towel
- Change of clothes
- Change of shoes
- Sunscreen
- Hat
- No flip-flops
- No Crocs (except for water days)

## CAMP HOURS

- Camp Hours: 8 a.m. - 4:30 p.m.

## SPECIAL EVENTS

- Monday's trip is a bus ride to McDonald's. Lunch is optional. Bring lunch or money.
- Wednesday is Movie Day at Regal Gulf Coast. Snack Packs (\$5.00) are optional. Headpinz Bowling after the movie. Please wear socks and sneakers.

## REMINDERS

- ID required for check out.
- Please label all of your camper's items.
- Check for daily reminders.
- Wear camp T-shirt on Monday and Wednesday.



## CAMPER SIGN-IN/OUT POLICY

A parent or guardian is required to sign in and sign out each camper daily. Only people who have previously been listed on the Supplemental Information Sheet will be permitted to sign for your child at pick up. Photo ID will be required. Changes must be submitted in writing.

# CAMP SUNSHINE WEEK 5

## IMPORTANT ANNOUNCEMENTS & REMINDERS

Pack a change of clothes, swimsuit, towel, and closed-toe shoes that can get wet. Please label all items.  
On field trip days, campers typically return by 3 p.m.

Mon. July 13  
Field Trip

Babcock Ranch



BABCOCK RANCH  
Buggy Ride

Coconut Point  
Scavenger Hunt



Tue. July 14  
Swim Day

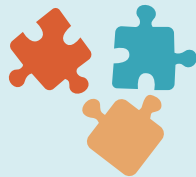
Ranger Program



Pool Day 11 a.m.



Sensory Play



Wed. July 15  
Field Trip

Movie Day



The Bad Guys 2 or  
Smurfs

\$5 Snack Pack  
(Optional)

Headpinz Bowling



Thurs. July 16  
Arts and Crafts

9:30 a.m. Craft Time



Pool Day 11 a.m.



Game: Hide and Seek



Fri. July 17  
Swim Day

Character  
Development:  
Calmness



Pool Day 1 p.m.



- **Camp Hours 8 a.m. - 4:30 p.m.**
- Lunch: noon - 12:30 p.m. | Snack: 10 - 10:15 a.m. & 3 - 3:15 p.m.
- Photo ID required at sign out by anyone picking up a camper.
- Calendars are subject to change.



**CAMP DIRECTOR:**

U. Shay Robertson | [URobertson@leegov.com](mailto:URobertson@leegov.com)

**KARL J. DREWS COMMUNITY CENTER**

(239) 707-7493

# PERFECT WEEK AT CAMP SUNSHINE

# CAMP SUNSHINE WEEK #5

## CAMPER DAILY'S

- Lunch: 12 p.m. - 12:30 p.m.
- Snacks at: 10 a.m. & 3 p.m.

## GUARDIAN DAILY'S

- **Morning Checklist:**
- Food
- Water bottle
- Closed-toe shoes
- Towel
- Change of clothes
- Change of shoes
- Sunscreen
- Hat
- No flip-flops
- No Crocs (except for water days)

## CAMP HOURS

- Camp Hours: 8 a.m. - 4:30 p.m.

## SPECIAL EVENTS

- Monday's trip is a swamp buggy tour at Babcock Ranch. Pack a cold lunch. Microwaves are not available.
- Wednesday is Movie Day at Regal Gulf Coast. Snack Packs (\$5.00) are optional. Headpinz Bowling after the movie. Please wear socks and sneakers.

## GUEST SPEAKERS

- Lee County Parks and Recreation - Ranger Program

## REMINDERS

- ID required for check out.
- Please label all of your camper's items.
- Check for daily reminders.
- Wear camp T-shirt on Monday and Wednesday.



## CAMPER SIGN-IN/OUT POLICY

A parent or guardian is required to sign in and sign out each camper daily. Only people who have previously been listed on the Supplemental Information Sheet will be permitted to sign for your child at pick up. Photo ID will be required. Changes must be submitted in writing.

# CAMP SUNSHINE WEEK 6

## IMPORTANT ANNOUNCEMENTS & REMINDERS

Pack a change of clothes, swimsuit, towel, and closed-toe shoes that can get wet. Please label all items.  
On Friday, we are taking a bus ride to Cheddar's Scratch Kitchen. Lunch is optional for \$20.  
On field trip days, campers typically return by 3 p.m.

**Mon. July 20**  
**Field Trip**

Boat Ride Freedom Waters Foundation



Explore Naples



**Tue. July 21**  
**Swim Day**

9 a.m. Let's get it started!



Pool Day 11 a.m.



Sensory Play



**Wed. July 22**  
**Field Trip**

Movie Day



Sonic the Hedgehog 3  
or Harold and the Purple Crayon

\$5 Snack Pack  
(Optional)

Board Games



**Thurs. July 23**  
**Arts and Crafts**

9:30 a.m. Craft Time



Pool Day 11 a.m.



Game: Hide and Seek



**Fri. July 24**  
**Field Trip**

Character  
Development:  
Happiness



Pool Day 1 p.m.



- **Camp Hours 8 a.m. - 4:30 p.m.**
- Lunch: noon - 12:30 p.m. | Snack: 10 - 10:15 a.m. & 3 - 3:15 p.m.
- Photo ID required at sign out by anyone picking up a camper.
- Calendars are subject to change.



**CAMP DIRECTOR:**

U. Shay Robertson | [URobertson@leegov.com](mailto:URobertson@leegov.com)

**KARL J. DREWS COMMUNITY CENTER**

(239) 707-7493

# PERFECT WEEK AT CAMP SUNSHINE

## CAMP SUNSHINE WEEK #6

### CAMPER DAILY'S

- Lunch: 12 p.m. - 12:30 p.m.
- Snacks at: 10 a.m. & 3 p.m.

### GUARDIAN DAILY'S

- **Morning Checklist:**
- Food
- Water bottle
- Closed-toe shoes
- Towel
- Change of clothes
- Change of shoes
- Sunscreen
- Hat
- No flip-flops
- No Crocs (except for water days)

### CAMP HOURS

- Camp Hours: 8 a.m. - 4:30 p.m.

### SPECIAL EVENTS

- Monday's trip is a boat ride down the Gordon River. Bring cold lunch or money. Microwaves are not available.
- Wednesday is Movie Day at Regal Gulf Coast. Snack Packs (\$5.00) are optional. Headpinz Bowling after the movie. Please wear socks and sneakers.

### REMINDERS

- ID required for check out.
- Please label all of your camper's items.
- Check for daily reminders.
- Wear camp T-shirt on Monday and Wednesday.



### CAMPER SIGN-IN/OUT POLICY

A parent or guardian is required to sign in and sign out each camper daily. Only people who have previously been listed on the Supplemental Information Sheet will be permitted to sign for your child at pick up. Photo ID will be required. Changes must be submitted in writing.

# CAMP SUNSHINE WEEK 7

## IMPORTANT ANNOUNCEMENTS & REMINDERS

Pack a change of clothes, swimsuit, towel, and closed-toe shoes that can get wet. Please label all items.  
On field trip days, campers typically return by 3 p.m.

**Mon. July 27**  
**Field Trip**

Fire Station Tour



Chuck E Cheese



**Tue. July 28**  
**Arts and Crafts**

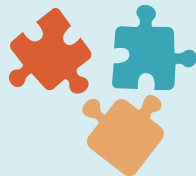
9 a.m. Let's get it started!



Pool Day 11 a.m.



Sensory Play



**Wed. July 29**  
**Field Trip**



Gabby's Dollhouse: The Movie or Trolls Band Together

\$5 Snack Pack (Optional)



**Thurs. July 30**  
**Swim Day**

9:30 a.m. Craft Time



Pool Day 11 a.m.

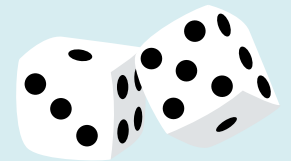


Card Games



**Fri. July 31**  
**Games Galore**

Minute to Win It



Game: Pool Noodle Tag



Pool Day 1 p.m.



- **Camp Hours 8 a.m. - 4:30 p.m.**
- Lunch: noon - 12:30 p.m. | Snack: 10 - 10:15 a.m. & 3 - 3:15 p.m.
- Photo ID required at sign out by anyone picking up a camper.
- Calendars are subject to change.



**CAMP DIRECTOR:**

U. Shay Robertson | [URobertson@leegov.com](mailto:URobertson@leegov.com)

**KARL J. DREWS COMMUNITY CENTER**

(239) 707-7493

# PERFECT WEEK AT CAMP SUNSHINE

# CAMP SUNSHINE WEEK #7

## CAMPER DAILY'S

- Lunch: 12 p.m. - 12:30 p.m.
- Snacks at: 10 a.m. & 3 p.m.

## GUARDIAN DAILY'S

- **Morning Checklist:**
- Food
- Water bottle
- Closed-toe shoes
- Towel
- Change of clothes
- Change of shoes
- Sunscreen
- Hat
- No flip-flops
- No Crocs (except for water days)

## CAMP HOURS

- Camp Hours: 8 a.m. - 4:30 p.m.

## SPECIAL EVENTS

- Monday's trip is a fire station tour. Bring cold lunch or money. Microwaves are not available.
- Wednesday is Movie Day at Regal Gulf Coast. Snack Packs (\$5.00) are optional. Headpinz Bowling after the movie. Please wear socks and sneakers.

## REMINDERS

- ID required for check out.
- Please label all of your camper's items.
- Check for daily reminders.
- Wear camp T-shirt on Monday and Wednesday.



## CAMPER SIGN-IN/OUT POLICY

A parent or guardian is required to sign in and sign out each camper daily. Only people who have previously been listed on the Supplemental Information Sheet will be permitted to sign for your child at pick up. Photo ID will be required. Changes must be submitted in writing.