



PERFECT WEEK AT CAMP WA-KE HATCHEE - WEEK 1



Camper Daily's:

p.m. snack
Water bottle
Tennis shoes
(No Crocs)
Comfortable clothing
Sunscreen

Guardian Daily's:

Please make sure
your supplemental
form is completed
before the first day!

Photo ID required at
sign out

Camp Hours:

Camp Hours: 7:30 a.m. - 6 p.m.

NO CAMP on July 4th.
Have a fun and safe holiday!

Special Events:

Southern SnoBalls
(Every Monday - \$3, \$5, \$6)

Water day on Wednesday!

Did you have fun
this week?
Scan this QR code
to let us know
how we did!



Guest Speakers:

Solid Waste and
Natural Resources

Reminders:

Wear your camp shirt
on the first day of
camp! (Monday)

Don't forget to pack a
swimsuit, towel,
change of clothes
and sunscreen for all
pool and water days



A parent or guardian is required to sign in and sign out each camper daily. Only persons who have previously been listed on the Supplemental Information Sheet will be permitted to sign for your child at pick up. Photo ID will be required. Changes must be submitted in writing.

WA-KE HATCHEE TRADITIONAL CAMP

WEEK 1

COLORS WEEK

Monday
June 10

9:00am- Morning
Announcements!



SNOW CONES 1pm
(Please bring cash)

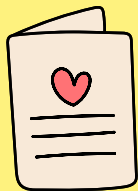


Tuesday
June 11

9:00am- Morning
Announcements!



Golisanos Card
making for
Children's Hospital



Wednesday
June 12

9:00am- Morning
Announcements!



ALL GROUPS
WATER DAY



Thursday
June 13

9:00am- Morning
Announcements!



10am Yoga and
Mindfulness with
4H

WEAR YOUR GROUP
COLOR!



Friday
June 14

9:00am- Morning
Announcements!



10:00am
Solid Waste and
Natural Resources



- Camp Hours: 7:30 a.m.- 6 p.m. | 9 a.m. Announcements
- Bring swimsuit, towel, change of clothes and sunscreen for Water days.
- Cash only for Snow cone days, \$3, \$5 & \$6.
- Calendars are subject to change



Traditional Camp Director:
Yvette Sanchez |
Ysanchez@leegov.com
**Wa-Ke Hatchee Recreation
Center**
(239) 634-0141



PERFECT WEEK AT CAMP WA-KE HATCHEE - WEEK 2



Camper Daily's:

p.m. Snack
Water bottle
Tennis shoes
(No Crocs)
Comfortable clothing
Sunscreen

Guardian Daily's:

Photo ID required at
sign out

Camp Hours:

Camp Hours: 7:30 a.m. - 6 p.m.

**NO CAMP on July 4th.
Have a fun and safe holiday!**

Special Events:

Halloween in June!
(Thursday)
Dress up in your favorite
Halloween costume or be
creative and create your own!

Did you have fun
this week?
Scan this QR code
to let us know
how we did!



Reminders

Don't forget to pack a
swimsuit, towel,
change of clothes
and sunscreen for all
pool and water days

Southern SnoBalls
(Every Monday - \$3,
\$5, \$6)

Field Trips:

Wednesday: Skyzone
and lunch at Lakes
Park



A parent or guardian is required to sign in and sign out each camper daily. Only persons who have previously been listed on the Supplemental Information Sheet will be permitted to sign for your child at pick up. Photo ID will be required. Changes must be submitted in writing.

WA-KE HATCHEE TRADITIONAL CAMP

WEEK 2

TROPICAL WEEK

Monday
June 17

9:00am- Morning
Announcements!



SNOW CONES 1pm
(Please bring cash)



Tuesday
June 18

9:00am- Morning
Announcements!



ALL GROUPS
WATER DAY



Hula Hoop Contest



Wednesday
June 19

9:00am-12pm
SKY ZONE
(Wear your camp
shirt)



Lunch at
Lakes Park



Thursday
June 20

9:00am- Morning
Announcements!



**TRICK
OR
TREAT**



**Halloween in
June!**

Wear your favorite
costume or create
your own!

Friday
June 21

9:00am- Morning
Announcements!



ALL GROUPS
WATER DAY

National Selfie
Day!



- Camp Hours: 7:30 a.m.- 6 p.m. | 9 a.m. Announcements
- Bring swimsuit, towel, change of clothes and sunscreen for Water days.
- Cash only for Snow cone days, \$3, \$5 & \$6.
- Calendars are subject to change



Traditional Camp Director:

Yvette Sanchez |

Ysanchez@leegov.com

**Wa-Ke Hatchee Recreation
Center**

(239) 634-0141



PERFECT WEEK AT CAMP WA-KE HATCHEE - WEEK 3



Camper Daily's:

p.m. Snack
Water bottle
Tennis shoes
(No Crocs)
Comfortable clothing
Sunscreen

Guardian Daily's:

Photo ID required at
sign out

Camp Hours:

Camp Hours: 7:30 a.m. - 6 p.m.

**NO CAMP on July 4th.
Have a fun and safe holiday!**

Special Events:

Southern SnoBalls
(Every Monday - \$3, \$5, \$6)

Water day on Tuesday!

Did you have fun
this week?
Scan this QR code
to let us know
how we did!



Reminders

Don't forget to pack a
swimsuit, towel,
change of clothes
and sunscreen for all
pool and water days

Guest Speaker

Butterfly Presentation
with Matthew Rudd



A parent or guardian is required to sign in and sign out each camper daily. Only persons who have previously been listed on the Supplemental Information Sheet will be permitted to sign for your child at pick up. Photo ID will be required. Changes must be submitted in writing.

WA-KE HATCHEE TRADITIONAL CAMP

WEEK 3

STEAM WEEK

Monday
June 24

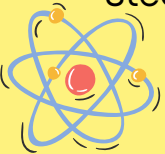
9:00am- Morning
Announcements!



SNOW CONES 1pm
(Please bring cash)



Science Day
Steam Project



Tuesday
June 25

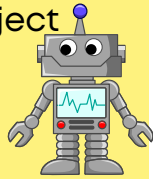
9:00am- Morning
Announcements!



ALL GROUPS
WATER DAY



Technology Day
Steam Project



Wednesday
June 26

9:00am- Morning
Announcements!



Engineering Day
Steam Project



Thursday
June 27

9:00am- Morning
Announcements!



Matthew Rudd
Butterfly
Presentation 10am

Art Day
Steam Project



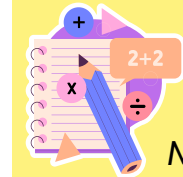
Friday
June 28

9:00am- Morning
Announcements!



1:00pm

All Summer Camp
Scavenger Hunt



Math Day
Steam Project

- Camp Hours: 7:30 a.m.- 6 p.m. | 9 a.m. Announcements
- Bring swimsuit, towel, change of clothes and sunscreen for Water days.
- Cash only for Snow cone days, \$3, \$5 & \$6.
- Calendars are subject to change



Traditional Camp Director:

Yvette Sanchez |

Ysanchez@leegov.com

**Wa-Ke Hatchee Recreation
Center**

(239) 634-0141



PERFECT WEEK AT CAMP WA-KE HATCHEE - WEEK 4



Camper Daily's:

p.m. Snack
Water bottle
Tennis shoes
(No Crocs)
Comfortable clothing
Sunscreen

Guardian Daily's:

Photo ID required at
sign out

Camp Hours:

Camp Hours: 7:30 a.m. - 6 p.m.
**NO CAMP this Thursday
July 4th.**
Have a fun and safe holiday!

Special Events:

Camp Family Cookout!
Family is invited to participate in
this fun event! Please sign up to
bring an item.

Did you have fun
this week?
Scan this QR code
to let us know
how we did!



Reminders

Don't forget to pack a
swimsuit, towel,
change of clothes
and sunscreen for all
pool and water days

Southern SnoBalls
(Every Monday - \$3,
\$5, \$6)

Field Trips:

Tuesday and
Wednesday: Six Mile
Cypress Slough Wet
Walk



A parent or guardian is required to sign in and sign out each camper daily. Only persons who have previously been listed on the Supplemental Information Sheet will be permitted to sign for your child at pick up. Photo ID will be required. Changes must be submitted in writing.

WA-KE HATCHEE TRADITIONAL CAMP

WEEK 4

PATRIOTIC WEEK

Monday
July 1

9:00am- Morning
Announcements!



SNOW CONES 1pm
(Please Bring Cash)



Tuesday
July 2

9:00am- Morning
Announcements!



**WEAR YOUR CAMP
SHIRT!**



Camp Cookout
donations needed.
See sign up sheet!

Wednesday
July 3

9:00am- Morning
Announcements!



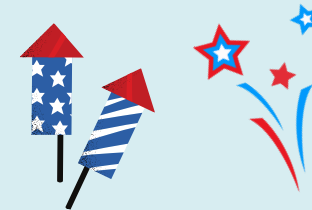
**WEAR YOUR CAMP
SHIRT!**



Camp Cookout
donations needed.
See sign up sheet!

Thursday
July 4

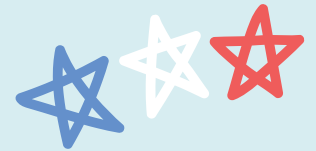
NO CAMP



HAPPY 4TH
OF JULY

Friday
July 5

Wear your
Red, White
and Blue



**BRING YOUR
FAMILY TO
THE FAMILY
COOKOUT!**



- Camp Hours: 7:30 a.m.- 6 p.m. | 9 a.m. Announcements
- Bring swimsuit, towel, change of clothes and sunscreen for Water days.
- Cash only for Snow cone days, \$3, \$5 & \$6.
- Calendars are subject to change



Traditional Camp Director:

Yvette Sanchez |

Ysanchez@leegov.com

**Wa-Ke Hatchee Recreation
Center**

(239) 634-0141



PERFECT WEEK AT CAMP WA-KE HATCHEE - WEEK 5



Camper Daily's:

p.m. Snack
Water bottle
Tennis shoes
(No Crocs)
Comfortable clothing
Sunscreen

Guardian Daily's:

Photo ID required at
sign out

Don't forget to pack a
swimsuit, towel,
change of clothes
and sunscreen for all
pool and water days

Camp Hours:

Camp Hours: 7:30 a.m. - 6 p.m.

Special Events:

All Group water Day on Tuesday

Did you have fun
this week?
Scan this QR code
to let us know
how we did!



Reminders

Wear your favorite
pjs all day on Friday

Southern SnoBalls
(Every Monday - \$3,
\$5, \$6)

Guest Speaker:

LCISO Presentation
and Ice Cream (No
cash is needed)



A parent or guardian is required to sign in and sign out each camper daily. Only persons who have previously been listed on the Supplemental Information Sheet will be permitted to sign for your child at pick up. Photo ID will be required. Changes must be submitted in writing.

WA-KE HATCHEE TRADITIONAL CAMP

WEEK 5

AROUND THE WORLD WEEK

Monday
July 8

9:00am- Morning
Announcements!



SNOW CONES 1pm
(Please bring cash)



Tuesday
July 9

9:00am- Morning
Announcements!



ALL GROUPS
WATER DAY



Wednesday
July 10

9:00am- Morning
Announcements!



Thursday
July 11

9:00am- Morning
Announcements!



1:30pm LCSO
Presentation
and Ice Cream!
(No cash
needed)



Bring in a can
for the Harry
Chapin Food
Bank!



Friday
July 12

Wear your
favorite
PJ'S

PAJAMA
PARTY

Day at the
movies!



- Camp Hours: 7:30 a.m.- 6 p.m. | 9 a.m. Announcements
- Bring swimsuit, towel, change of clothes and sunscreen for Water days.
- Cash only for Snow cone days, \$3, \$5 & \$6.
- Calendars are subject to change



Traditional Camp Director:

Yvette Sanchez |
Ysanchez@leegov.com

**Wa-Ke Hatchee Recreation
Center**

(239) 634-0141



PERFECT WEEK AT CAMP WA-KE HATCHEE - WEEK 6



Camper Daily's:

p.m. Snack
Water bottle
Tennis shoes
(No Crocs)
Comfortable clothing
Sunscreen

Guardian Daily's:

Photo ID required at
sign out

Don't forget to pack a
swimsuit, towel,
change of clothes
and sunscreen for all
pool and water days

Camp Hours:

Camp Hours: 7:30 a.m. - 6 p.m.

Special Events:

Southern SnoBalls
(Every Monday - \$3, \$5, \$6)

Sunsplash on Wednesday!
Please wear your camp shirt

Did you have fun
this week?
Scan this QR code
to let us know
how we did!



Reminders

Don't forget to pack a
swimsuit, towel,
change of clothes
and sunscreen for all
pool and water days

Wear your Favorite
Sports team t-shirt or
jersey

Guest Speaker:

Mike Hammond with
the Calusa Blueway



A parent or guardian is required to sign in and sign out each camper daily. Only persons who have previously been listed on the Supplemental Information Sheet will be permitted to sign for your child at pick up. Photo ID will be required. Changes must be submitted in writing.

WA-KE HATCHEE TRADITIONAL CAMP

WEEK 6

CAREER WEEK

Monday
July 15

9:00am- Morning
Announcements!



SNOW CONES 1pm
(Please bring cash)



Tuesday
July 16

9:00am- Morning
Announcements!



10:00am
Calusa Blue
Way
Presentation



Wednesday
July 17



SUNSPASH!

Please bring a
swimsuit, towel,
change of
clothes and
sunscreen



**WEAR YOUR CAMP
SHIRT!**

Thursday
July 18

9:00am- Morning
Announcements!



**Wear your
favorite sports
team t-shirt or
jersey!**



Friday
July 19

9:00am- Morning
Announcements!



Campers create
thank you cards for
essential workers in
their community!



- Camp Hours: 7:30 a.m.- 6 p.m. | 9 a.m. Announcements
- Bring swimsuit, towel, change of clothes and sunscreen for Water days.
- Cash only for Snow cone days, \$3, \$5 & \$6.
- Calendars are subject to change



Traditional Camp Director:
Yvette Sanchez |
Ysanchez@leegov.com
**Wa-Ke Hatchee Recreation
Center**
(239) 634-0141



PERFECT WEEK AT CAMP WA-KE HATCHEE - WEEK 7



Camper Daily's:

p.m. Snack
Water bottle
Tennis shoes
(No Crocs)
Comfortable clothing
Sunscreen

Guardian Daily's:

Photo ID required at
sign out

Camp Hours:

Camp Hours: 7:30 a.m. - 6 p.m.

Special Events:

Southern SnoBalls
(Every Monday - \$3, \$5, \$6)
Christmas in July

Olympic Awards Community
Event

Did you have fun
this week?
Scan this QR code
to let us know
how we did!



Reminders

Wear red and green
for Christmas in July!

Don't forget to pack a
swimsuit, towel,
change of clothes
and sunscreen for all
pool and water days

Guest Speaker

Iona McGregor
Fire Department



A parent or guardian is required to sign in and sign out each camper daily. Only persons who have previously been listed on the Supplemental Information Sheet will be permitted to sign for your child at pick up. Photo ID will be required. Changes must be submitted in writing.

WA-KE HATCHEE TRADITIONAL CAMP

WEEK 7

OLYMPICS WEEK

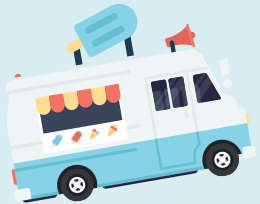
Monday
July 22

9:00am- Morning
Announcements!



OLYMPICS
WEEK

SNOW CONES 1pm
(Please bring cash)



Tuesday
July 23

9:00am- Morning
Announcements!



OLYMPICS
WEEK



Wednesday
July 24

9:00am- Morning
Announcements!



OLYMPIC
EVENTS



ALL GROUPS
WATER DAY



Thursday
July 25

9:00am- Morning
Announcements!



CHRISTMAS IN
JULY



1pm Iona McGregor
Fire Department



Friday
July 26

9:00am- Morning
Announcements!



OLYMPIC
GAMES AND
AWARDS



- Camp Hours: 7:30 a.m.- 6 p.m. | 9 a.m. Announcements
- Bring swimsuit, towel, change of clothes and sunscreen for Water days.
- Cash only for Snow cone days, \$3, \$5 & \$6.
- Calendars are subject to change



Traditional Camp Director:

Yvette Sanchez |

Ysanchez@leegov.com

**Wa-Ke Hatchee Recreation
Center**

(239) 634-0141



PERFECT WEEK AT CAMP WA-KE HATCHEE - WEEK 8



Camper Daily's:

p.m. Snack
Water bottle
Tennis shoes
(No Crocs)
Comfortable clothing
Sunscreen

Guardian Daily's:

Photo ID required at
sign out

Camp Hours:

Camp Hours: 7:30 a.m. - 6 p.m.

Special Events:

Southern SnoBalls
(Every Monday - \$3, \$5, \$6)

Talent Show on Friday!

Did you have fun
this week?
Scan this QR code
to let us know
how we did!



Reminders

Bring a can to
support the Harry
Chapin Food Bank

Don't forget to pack a
swimsuit, towel,
change of clothes
and sunscreen for all
pool and water days

Guest Speaker:

LCDAS Presentation
with Karen Frick



A parent or guardian is required to sign in and sign out each camper daily. Only persons who have previously been listed on the Supplemental Information Sheet will be permitted to sign for your child at pick up. Photo ID will be required. Changes must be submitted in writing.

WA-KE HATCHEE TRADITIONAL CAMP

WEEK 8

ENTERTAINMENT WEEK

Monday
July 29

9:00am- Morning
Announcements!



SNOW CONES 1pm
(Please bring cash)



TALENT
SHOW
PRACTICE

Show
your
Talent

Tuesday
July 30

9:00am- Morning
Announcements!



TALENT
SHOW
PRACTICE



Wednesday
July 31

9:00am- Morning
Announcements!



LCDAS GUEST
SPEAKER



TALENT
SHOW
PRACTICE

Thursday
August 1

9:00am- Morning
Announcements!

Bring in a can
for the Harry
Chapin Food
Bank!



TALENT
SHOW
PRACTICE



Friday
August 2

9:00am- Morning
Announcements!



Talent
Show

- Camp Hours: 7:30 a.m.- 6 p.m. | 9 a.m. Announcements
- Bring swimsuit, towel, change of clothes and sunscreen for Water days.
- Cash only for Snow cone days, \$3, \$5 & \$6.
- Calendars are subject to change



Traditional Camp Director:

Yvette Sanchez |

Ysanchez@leegov.com

**Wa-Ke Hatchee Recreation
Center**

(239) 634-0141