



PERFECT WEEK AT CAMP WA-KE HATCHEE - WEEK 1



Camper Daily's:

p.m. snack
Water bottle
Tennis shoes
(No Crocs)
Comfortable clothing
Sunscreen

Guardian Daily's:

Please make sure
your supplemental
form is completed
before the first day!

Photo ID required at
sign out

Camp Hours:

Camp Hours: 7:30 a.m. - 6 p.m.

NO CAMP on July 4th.
Have a fun and safe holiday!

Special Events:

Southern SnoBalls
(Every Monday - \$3, \$5, \$6)

Pool day on
Tuesday (Groups 1 & 2) or
Wednesday (Groups 3 & 4)

Did you have fun
this week?
Scan this QR code
to let us know
how we did!



Guest Speakers:

Solid Waste and
Natural Resources

Reminders:

Wear your camp shirt
on the first day of
camp! (Monday)

Don't forget to pack a
swimsuit, towel,
change of clothes
and sunscreen for all
pool and water days



A parent or guardian is required to sign in and sign out each camper daily. Only persons who have previously been listed on the Supplemental Information Sheet will be permitted to sign for your child at pick up. Photo ID will be required. Changes must be submitted in writing.

WA-KE HATCHEE MIDDLE SCHOOL CAMP

WEEK 1

COLORS WEEK

Monday
June 10

9:00am- Morning
Announcements!



SNOW CONES AT 1 PM
(Please bring cash if
you would like to
purchase)



Tuesday
June 11

9:00am- Morning
Announcements!

11:00 am-3:00pm
Karl Draws Pool
Bring swimsuit,
towel, change of
clothes and
sunscreen



Golisanos Card
making for
Children's Hospital

Wednesday
June 12

9:00am- Morning
Announcements!



12:45pm-3:00pm
San Carlos Pool
Bring swimsuit,
towel, change of
clothes and
sunscreen



Thursday
June 13

9:00am- Morning
Announcements!



10am Yoga and
Mindfulness with
4H

**WEAR YOUR GROUP
COLOR!**



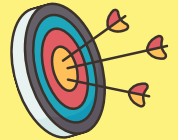
Friday
June 14

9:00am- Morning
Announcements!

10:00am
Solid Waste and
Natural Resources



1:00pm-3:00pm
Archery Practice



- Camp Hours: 7:30 a.m.- 6 p.m. | 9 a.m. Announcements
- Bring swimsuit, towel, change of clothes and sunscreen for Water days.
- Cash only for Snow cone days, \$3, \$5 & \$6.
- Calendars are subject to change



Middle School Camp Director:

Juliana Silva |

Jsilva@leegov.com

**Wa-Ke Hatchee Recreation
Center**

(239) 634-0141



PERFECT WEEK AT CAMP WA-KE HATCHEE - WEEK 2



Camper Daily's:

p.m. Snack
Water bottle
Tennis shoes
(No Crocs)
Comfortable clothing
Sunscreen

Guardian Daily's:

Photo ID required at
sign out

Camp Hours:

Camp Hours: 7:30 a.m. - 6 p.m.

**NO CAMP on July 4th.
Have a fun and safe holiday!**

Special Events:

Halloween in June!
(Thursday)
Dress up in your favorite
Halloween costume or be
creative and create your own!

Did you have fun
this week?
Scan this QR code
to let us know
how we did!



Reminders

Don't forget to pack a
swimsuit, towel,
change of clothes
and sunscreen for all
pool and water days

Southern SnoBalls
(Every Monday - \$3,
\$5, \$6)

Field Trips:

Tuesday : Pool day

Wednesday: Skyzone
and lunch at Lakes
Park



A parent or guardian is required to sign in and sign out each camper daily. Only persons who have previously been listed on the Supplemental Information Sheet will be permitted to sign for your child at pick up. Photo ID will be required. Changes must be submitted in writing.

WA-KE HATCHEE MIDDLE SCHOOL CAMP

WEEK 2

TROPICAL WEEK

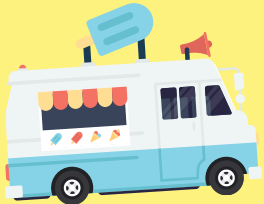
Monday
June 17

9:00am- Morning
Announcements!



SNOW CONES AT 1 PM

(Please bring cash if
you would like to
purchase)



Tuesday
June 18

9:00am- Morning
Announcements!

11:00 am-3:00pm
Karl Drews Pool
Bring swimsuit,
towel, change of
clothes and
sunscreen



Hula Hoop
Contest!



Wednesday
June 19



9:00am-12pm
SKYZONE



Lunch at Lakes
Park



Thursday
June 20

9:00am- Morning
Announcements!



**TRICK
OR
TREAT**



HALLOWEEN IN JUNE!

Dress up in your
favorite
Halloween
costume or be
creative and
create your own!

Friday
June 21

9:00am- Morning
Announcements!



**ALL GROUPS
WATER DAY**

National Selfie
Day!



- Camp Hours: 7:30 a.m.- 6 p.m. | 9 a.m. Announcements
- Bring swimsuit, towel, change of clothes and sunscreen for Water days.
- Cash only for Snow cone days, \$3, \$5 & \$6.
- Calendars are subject to change



Middle School Camp Director:

Juliana Silva |

Jsilva@leegov.com

**Wa-Ke Hatchee Recreation
Center**

(239) 634-0141



PERFECT WEEK AT CAMP WA-KE HATCHEE - WEEK 3



Camper Daily's:

p.m. Snack
Water bottle
Tennis shoes
(No Crocs)
Comfortable clothing
Sunscreen

Guardian Daily's:

Photo ID required at
sign out

Camp Hours:

Camp Hours: 7:30 a.m. - 6 p.m.

NO CAMP on July 4th.
Have a fun and safe holiday!

Special Events:

Southern SnoBalls
(Every Monday - \$3, \$5, \$6)

Pool day on Tuesday
(Groups 3 & 4) or
Wednesday (Groups 1 & 2)

Did you have fun
this week?
Scan this QR code
to let us know
how we did!



Reminders

Don't forget to pack a
swimsuit, towel,
change of clothes
and sunscreen for all
pool and water days

Field Trips:

Thursday: Collier
Museum
Wear your camp
shirt!



A parent or guardian is required to sign in and sign out each camper daily. Only persons who have previously been listed on the Supplemental Information Sheet will be permitted to sign for your child at pick up. Photo ID will be required. Changes must be submitted in writing.

WA-KE HATCHEE MIDDLE SCHOOL CAMP

WEEK 3

STEAM WEEK

Monday
June 24

9:00am- Morning
Announcements!



SNOW CONES AT 1 PM

(Please bring cash if
you would like to
purchase)



SCIENCE

Tuesday
June 25

9:00am- Morning
Announcements!



11:00 am-3:00pm

Karl Drews Pool

Bring swimsuit,
towel, change of
clothes and
sunscreen



TECHNOLOGY

Wednesday
June 26

9:00am- Morning
Announcements!

12:45pm-3:00pm
San Carlos Pool

Bring swimsuit,
towel, change of
clothes and
sunscreen



ENGINEERING

Thursday
June 27

9:00am- Morning
Announcements!



10 am-12 pm
Collier Museum



ART

Friday
June 28

9:00am- Morning
Announcements!



1:00pm
All Camp
Scavenger Hunt

MATH

- Camp Hours: 7:30 a.m.- 6 p.m. | 9 a.m. Announcements
- Bring swimsuit, towel, change of clothes and sunscreen for Water days.
- Cash only for Snow cone days, \$3, \$5 & \$6.
- Calendars are subject to change



Middle School Camp Director:

Juliana Silva |

Jsilva@leegov.com

**Wa-Ke Hatchee Recreation
Center**

(239) 634-0141



PERFECT WEEK AT CAMP WA-KE HATCHEE - WEEK 4



Camper Daily's:

p.m. Snack
Water bottle
Tennis shoes
(No Crocs)
Comfortable clothing
Sunscreen

Guardian Daily's:

Photo ID required at
sign out

Camp Hours:

Camp Hours: 7:30 a.m. - 6 p.m.
**NO CAMP this Thursday,
July 4th.**
Have a fun and safe holiday!

Special Events:

Camp Family Cookout!
Family is invited to participate in
this fun event! Please sign up to
bring an item.

Did you have fun
this week?
Scan this QR code
to let us know
how we did!



Reminders

Don't forget to pack a
swimsuit, towel,
change of clothes
and sunscreen for all
pool and water days

Southern SnoBalls
(Every Monday - \$3,
\$5, \$6)

Field Trips:

Tuesday (Groups 1 & 2)
and Wednesday
(Groups 3 & 4) : Six
Mile Cypress Slough
Wet Walk



A parent or guardian is required to sign in and sign out each camper daily. Only persons who have previously been listed on the Supplemental Information Sheet will be permitted to sign for your child at pick up. Photo ID will be required. Changes must be submitted in writing.

WA-KE HATCHEE MIDDLE SCHOOL CAMP

WEEK 4

PATRIOTIC WEEK

Monday
July 1

9:00am- Morning
Announcements!



SNOW CONES AT 1 PM

(Please bring cash if
you would like to
purchase)



Tuesday
July 2

8:30am-11:00am
Six Mile Cypress
Slough Wet Walk



**WEAR YOUR CAMP
SHIRTS!**

LUNCH AT SIX MILE



**Camp Cookout
donations needed
See sign up sheet!**

Wednesday
July 3

8:30am-11:00am
Six Mile Cypress
Slough Wet Walk



**WEAR YOUR CAMP
SHIRTS!**

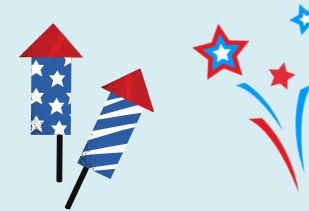
LUNCH AT SIX MILE



**Camp Cookout
donations needed
See sign up sheet!**

Thursday
July 4

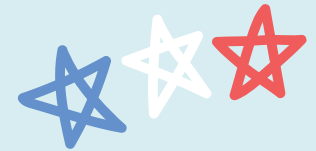
NO CAMP



**HAPPY 4TH
OF JULY**

Friday
July 5

Wear your
Red, White &
Blue



**CAMP FAMILY
COOKOUT - BRING
YOUR FAMILY!**



- Camp Hours: 7:30 a.m.- 6 p.m. | 9 a.m. Announcements
- Bring swimsuit, towel, change of clothes and sunscreen for water days.
- Cash only for Snow cone days, \$3, \$5 & \$6.
- Calendars are subject to change



Middle School Camp Director:

Juliana Silva |

Jsilva@leegov.com

**Wa-Ke Hatchee Recreation
Center**

(239) 634-0141



PERFECT WEEK AT CAMP WA-KE HATCHEE - WEEK 5



Camper Daily's:

p.m. Snack
Water bottle
Tennis shoes
(No Crocs)
Comfortable clothing
Sunscreen

Guardian Daily's:

Photo ID required at
sign out

Don't forget to pack a
swimsuit, towel,
change of clothes
and sunscreen for all
pool and water days

Camp Hours:

Camp Hours: 7:30 a.m. - 6 p.m.

Special Events:

All Group water Day on Tuesday
Mighty Mussels Baseball Game

Did you have fun
this week?
Scan this QR code
to let us know
how we did!



Reminders

Wear your favorite
pjs all day on Friday

Wear your Camp
T-shirt to the Mighty
Mussels Baseball
Game

Southern SnoBalls
(Every Monday - \$3,
\$5, \$6)

Guest Speaker:

LCSO Presentation
and Ice Cream (No
cash is needed)



A parent or guardian is required to sign in and sign out each camper daily. Only persons who have previously been listed on the Supplemental Information Sheet will be permitted to sign for your child at pick up. Photo ID will be required. Changes must be submitted in writing.

WA-KE HATCHEE MIDDLE SCHOOL CAMP

WEEK 5

AROUND THE WORLD WEEK

Monday
July 8

9:00am- Morning
Announcements!



SNOW CONES AT 1 PM

(Please bring cash if
you would like to
purchase)



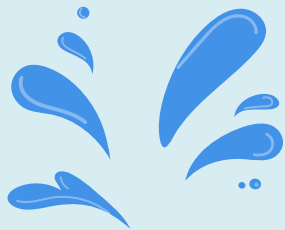
Tuesday
July 9

9:00am- Morning
Announcements!



**ALL GROUPS
WATER DAY**

Bring swimsuit,
towel, change of
clothes and
sunscreen



Wednesday
July 10

**MIGHTY MUSSELS
BASEBALL GAME**



Thursday
July 11

9:00am- Morning
Announcements!



1:30pm LCSO
Presentation
and Ice Cream!
(No cash
needed)



Friday
July 12

**Wear your
favorite
PJ'S**

**PAJAMA
PARTY**

**Day at the
movies!**



- Camp Hours: 7:30 a.m.- 6 p.m. | 9 a.m. Announcements
- Bring swimsuit, towel, change of clothes and sunscreen for water days.
- Cash only for Snow cone days, \$3, \$5 & \$6.
- Calendars are subject to change



Middle School Camp Director:

Juliana Silva |
jsilva@leegov.com

**Wa-Ke Hatchee Recreation
Center**

(239) 634-0141



PERFECT WEEK AT CAMP WA-KE HATCHEE - WEEK 6



Camper Daily's:

p.m. Snack
Water bottle
Tennis shoes
(No Crocs)
Comfortable clothing
Sunscreen

Guardian Daily's:

Photo ID required at
sign out

Don't forget to pack a
swimsuit, towel,
change of clothes
and sunscreen for all
pool and water days

Camp Hours:

Camp Hours: 7:30 a.m. - 6 p.m.

Special Events:

Southern SnoBalls
(Every Monday - \$3, \$5, \$6)

Sunsplash on Wednesday!
Please wear your camp shirt

Did you have fun
this week?
Scan this QR code
to let us know
how we did!



Reminders

Don't forget to pack a
swimsuit, towel,
change of clothes
and sunscreen for all
pool and water days

Wear your Favorite
Sports team t-shirt or
jersey

Guest Speaker:

Mike Hammond with
the Calusa Blueway



A parent or guardian is required to sign in and sign out each camper daily. Only persons who have previously been listed on the Supplemental Information Sheet will be permitted to sign for your child at pick up. Photo ID will be required. Changes must be submitted in writing.

WA-KE HATCHEE MIDDLE SCHOOL CAMP

WEEK 6

CAREER WEEK

Monday
July 15

9:00am- Morning
Announcements!



SNOW CONES AT 1 PM

(Please bring cash if
you would like to
purchase)



Tuesday
July 16

9:00am- Morning
Announcements!



10:00am
The Calusa
BlueWay
Presentation



Wednesday
July 17



SUNSPASH!

Please bring a
swimsuit, towel,
change of
clothes and
sunscreen



**WEAR YOUR CAMP
SHIRTS!**

Thursday
July 18

9:00am- Morning
Announcements!



**Wear your
favorite sports
team t-shirt or
jersey!**



Friday
July 19

9:00am- Morning
Announcements!



Campers create
thank you cards for
essential workers in
their community!



- Camp Hours: 7:30 a.m.- 6 p.m. | 9 a.m. Announcements
- Bring swimsuit, towel, change of clothes and sunscreen for water days.
- Cash only for Snow cone days, \$3, \$5 & \$6.
- Calendars are subject to change



Middle School Camp Director:

Juliana Silva |

Jsilva@leegov.com

**Wa-Ke Hatchee Recreation
Center**

(239) 634-0141



PERFECT WEEK AT CAMP WA-KE HATCHEE - WEEK 7



Camper Daily's:

p.m. Snack
Water bottle
Tennis shoes
(No Crocs)
Comfortable clothing
Sunscreen

Guardian Daily's:

Photo ID required at
sign out

Camp Hours:

Camp Hours: 7:30 a.m. - 6 p.m.

Special Events:

Southern SnoBalls
(Every Monday - \$3, \$5, \$6)
Christmas in July

Olympic Awards Community
Event

Did you have fun
this week?
Scan this QR code
to let us know
how we did!



Reminders

Wear red and green
for Christmas in July!

Don't forget to pack a
swimsuit, towel,
change of clothes
and sunscreen for all
pool and water days

Field Trips:

Wednesday: Pool day

Thursday: Collier
Museum
Wear your camp shirt!



A parent or guardian is required to sign in and sign out each camper daily. Only persons who have previously been listed on the Supplemental Information Sheet will be permitted to sign for your child at pick up. Photo ID will be required. Changes must be submitted in writing.

WA-KE HATCHEE MIDDLE SCHOOL CAMP

WEEK 7

OLYMPICS WEEK

Monday
July 22

9:00am- Morning
Announcements!



**OLYMPIC
EVENTS**



SNOW CONES AT 1 PM

(Please bring cash if
you would like to
purchase)



Tuesday
July 23

9:00am- Morning
Announcements!



**OLYMPIC
EVENTS**



Wednesday
July 24

9:00am- Morning
Announcements!

**OLYMPIC
EVENTS**



12:45pm-3:00pm
San Carlos Pool
Please bring a
swimsuit, towel,
change of clothes
and sunscreen

AT THE
pool

Thursday
July 25

9:00am- Morning
Announcements!



**CHRISTMAS IN
JULY**



**WEAR YOUR CAMP
SHIRTS!**

10am-12pm
Collier
Museum



Friday
July 26

9:00am- Morning
Announcements!



**OLYMPIC
AWARDS!**

Community is
invited!



- Camp Hours: 7:30 a.m.- 6 p.m. | 9 a.m. Announcements
- Bring swimsuit, towel, change of clothes and sunscreen for water days.
- Cash only for Snow cone days, \$3, \$5 & \$6.
- Calendars are subject to change



Middle School Camp Director:

Juliana Silva |

Jsilva@leegov.com

**Wa-Ke Hatchee Recreation
Center**

(239) 634-0141



PERFECT WEEK AT CAMP WA-KE HATCHEE - WEEK 8



Camper Daily's:

p.m. Snack
Water bottle
Tennis shoes
(No Crocs)
Comfortable clothing
Sunscreen

Guardian Daily's:

Photo ID required at
sign out

Camp Hours:

Camp Hours: 7:30 a.m. - 6 p.m.

Special Events:

Southern SnoBalls
(Every Monday - \$3, \$5, \$6)

Talent Show on Friday!

Did you have fun
this week?
Scan this QR code
to let us know
how we did!



Reminders

Bring a can to
support the Harry
Chapin Food Bank

Don't forget to pack a
swimsuit, towel,
change of clothes
and sunscreen for all
pool and water days

Guest Speaker:

LCDAS Presentation
with Karen Frick



A parent or guardian is required to sign in and sign out each camper daily. Only persons who have previously been listed on the Supplemental Information Sheet will be permitted to sign for your child at pick up. Photo ID will be required. Changes must be submitted in writing.

WA-KE HATCHEE MIDDLE SCHOOL CAMP

WEEK 8

ENTERTAINMENT WEEK

Monday
July 29

9:00am- Morning
Announcements!



SNOW CONES AT 1 PM

(Please bring cash if
you would like to
purchase)



TALENT
SHOW
PRACTICE

*Show
your
Talent*

Tuesday
July 30

9:00am- Morning
Announcements!



TALENT SHOW
PRACTICE



Wednesday
July 31

9:00am- Morning
Announcements!



10 am
LCDAS
Presentation



TALENT
SHOW
PRACTICE

Thursday
August 1

9:00am- Morning
Announcements!

**Bring in a can
for the Harry
Chapin Food
Bank!**



TALENT
SHOW
PRACTICE



Friday
August 2

9:00am- Morning
Announcements!



*Talent
Show*

- Camp Hours: 7:30 a.m.- 6 p.m. | 9 a.m. Announcements
- Bring swimsuit, towel, change of clothes and sunscreen for water days.
- Cash only for Snow cone days, \$3, \$5 & \$6.
- Calendars are subject to change



Middle School Camp Director:

Juliana Silva |

Jsilva@leegov.com

**Wa-Ke Hatchee Recreation
Center**

(239) 634-0141