

# WA-KE TRADITIONAL CAMP WEEK 1

## IMPORTANT ANNOUNCEMENTS & REMINDERS

Sports Week

Southern Snoballs on Friday! **Cash Only:** \$3, \$5, and \$6

Make sure you check the lost & found every day!

**LOST &  
FOUND**

**Monday  
June 16**

Announcements  
and Ice Breakers



**Tuesday  
June 17**

Soccer Day  
Wear a Soccer  
Jersey



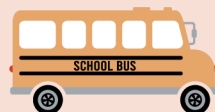
**Wednesday  
June 18**

Baseball Day  
Wear a Baseball  
Jersey



**ALL CAMP FIELD  
TRIP**

Mighty Mussel  
Baseball  
11 a.m.-3 p.m.



**Thursday  
June 19**

All Sports Day  
Wear Your Favorite  
Jersey



**Friday  
June 20**

Track and Field  
Day



Southern Snoballs  
2 p.m.



Camper of the Week  
Raffle

- **Camp Hours** 7:30 a.m. - 6 p.m.
- Have questions? Refer to the "How to have a Perfect Week at Camp" document.
- Calendars are subject to change



### CAMP DIRECTOR:

Nyell Philp | [nphilp@leegov.com](mailto:nphilp@leegov.com)

**WA-KE HATCHEE REC CENTER TRADITIONAL CAMP**  
(239) 533-6850

# PERFECT WEEK AT TRADITIONAL CAMP

## WA-KE HATCHEE WEEK 1

### CAMPER DAILY'S

- Sunscreen
- Water Bottle
- A.M. Snack
- Lunch
- P.M. Snack
- Closed-toed Shoes (No Crocs)
- Bug Spray if needed

### GUARDIAN DAILY'S

- Make sure to complete your Supplemental Form before Monday
- Have your photo ID ready at sign-out
- Phones and other electronics are not allowed.
  - Campers have access to the center phone whenever needed!

### CAMP HOURS

- Camp Hours: 7:30 a.m.-6 p.m.
- Morning Snack: 9:15 a.m.
- Lunch: 11:30 a.m.-12:30 p.m.
- Afternoon Snack: 4 p.m.

### SPECIAL EVENTS

- **ALL CAMP FIELD TRIP:** Might Mussels Baseball Game on Wednesday!
  - Wear your camp shirt
  - We will leave at 10:30 a.m. sharp!
  - Concession stand will be open, but the lines will be long so please bring lunch
- NO WATER DAY THIS WEEK

### GUEST SPEAKERS

- None this Week!

### REMINDERS

- **It's Sports Week!**
  - Check the Camp Calendar to see what to wear each day
- Write your camper's name on their items
- Check Lost & Found everyday!
- Pack a swimsuit, towel, change of clothes, and water shoes for water day next week!
- Southern Snoballs (Snow Cones)
  - Cash Only: \$3, \$5, or \$6



### CAMPER SIGN-IN/OUT POLICY

A parent or guardian is required to sign in and sign out each camper daily. Only people who have previously been listed on the Supplemental Information Sheet will be permitted to sign for your child at pick up. Photo ID will be required. Changes must be submitted in writing.

# WA-KE TRADITIONAL CAMP WEEK 2

## IMPORTANT ANNOUNCEMENTS & REMINDERS

Spirit Week

Southern Snoballs on Friday! **Cash Only:** \$3, \$5, and \$6

Make sure you check the lost & found every day!

**LOST &  
FOUND**

**Monday  
June 23**

Announcements  
and Ice Breakers



**Tuesday  
June 24**

Crazy Hair Day



Lee County Library  
Presentation  
9 a.m.-11 a.m.



**Wednesday  
June 25**

Wacky Wednesday  
Come up with your  
silliest outfit



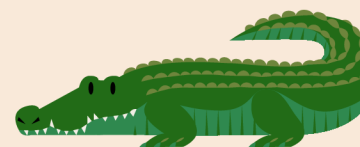
**Water Day**

**Thursday  
June 26**

Twin Day  
Match outfits with a  
friend/counselor



Conservation 20/20  
Greg Kosick  
Presentation  
9 a.m.-11:30 a.m.



**Friday  
June 27**

Rainbow Day  
Wear as many  
colors as possible

Southern Snoballs  
2 p.m.

### COMMUNITY EVENT

Moore's Soul Food  
Truck Friday!  
Parents and the  
Community Invited  
5 p.m.

Camper of the Week  
Raffle

- **Camp Hours** 7:30 a.m. - 6 p.m.
- Have questions? Refer to the "How to have a Perfect Week at Camp" document.
- Calendars are subject to change



### CAMP DIRECTOR:

Nyell Philp | [nphilp@leegov.com](mailto:nphilp@leegov.com)

**WA-KE HATCHEE REC CENTER TRADITIONAL CAMP**  
(239) 533-6850

# PERFECT WEEK AT TRADITIONAL CAMP

## WA-KE HATCHEE WEEK 2

### CAMPER DAILY'S

- Sunscreen
- Water Bottle
- A.M. Snack
- Lunch
- P.M. Snack
- Closed-toed Shoes (No Crocs)
- Bug Spray if needed

### GUARDIAN DAILY'S

- Make sure to complete your Supplemental Form before Monday
- Have your photo ID ready at sign-out
- Phones and other electronics are not allowed.
  - Campers have access to the center phone whenever needed!

### CAMP HOURS

- Camp Hours: 7:30 a.m.-6 p.m.
- Morning Snack: 9:15 a.m.
- Lunch: 11:30 a.m.-12:30 p.m.
- Afternoon Snack: 4 p.m.

### SPECIAL EVENTS

- Water Day on Wednesday
  - Bring a towel, swimsuit, change of clothes, sunscreen, and water shoes
- **COMMUNITY EVENT:** Food Truck Friday!
  - Moore's Soul Food
  - Parents and Community invited
  - 5 p.m.

### GUEST SPEAKERS

- Tuesday
  - Lee County Library Presentation
- Thursday - Greg Kosick
  - Conservation 20/20 Presentation

### REMINDERS

- **It's Sports Week!**
  - Check the Camp Calendar to see what to wear each day
- Write your camper's name on their items
- Check Lost & Found everyday!
- Southern Snoballs (Snow Cones)
  - Cash Only: \$3, \$5, or \$6



### CAMPER SIGN-IN/OUT POLICY

A parent or guardian is required to sign in and sign out each camper daily. Only people who have previously been listed on the Supplemental Information Sheet will be permitted to sign for your child at pick up. Photo ID will be required. Changes must be submitted in writing.



# WA-KE TRADITIONAL CAMP WEEK 3

## IMPORTANT ANNOUNCEMENTS & REMINDERS

Holiday Week

Southern Snoballs on Thursday! **Cash Only**: \$3, \$5, and \$6

Make sure you check the lost & found every day!

**LOST &  
FOUND**

**Monday  
June 30**

Announcements  
and Ice Breakers



4H Presentation  
Arielle Pierce  
9:30 a.m.-11 a.m.

**Tuesday  
July 1**

Halloween Day  
Wear camp  
appropriate costumes



**Wednesday  
July 2**

Winter Holiday Day  
Wear your favorite  
holiday outfit



**Water Day**

**Thursday  
July 3**

Happy 4<sup>th</sup> of July  
Wear red, white and  
blue



Southern Snoballs  
2 p.m.



Camper of the Week  
Raffle

**Friday  
July 4**

**NO CAMP**



Have a safe and fun  
holiday!



- **Camp Hours** 7:30 a.m. - 6 p.m.
- Have questions? Refer to the "How to have a Perfect Week at Camp" document.
- Calendars are subject to change



**CAMP DIRECTOR:**

Nyell Philp | [nphilp@leegov.com](mailto:nphilp@leegov.com)

**WA-KE HATCHEE REC CENTER TRADITIONAL CAMP**  
(239) 533-6850

# PERFECT WEEK AT TRADITIONAL CAMP

## WA-KE HATCHEE WEEK 3

### CAMPER DAILY'S

- Sunscreen
- Water Bottle
- A.M. Snack
- Lunch
- P.M. Snack
- Closed-toed Shoes (No Crocs)
- Bug Spray

### GUARDIAN DAILY'S

- Make sure to complete your Supplemental Form before Monday
- Have your photo ID ready at sign-out
- Phones and other electronics are not allowed. Campers have access to the center phone whenever needed! :)

### CAMP HOURS

- Camp Hours: 7:30 a.m.-6 p.m.
- Morning Snack: 9:15 a.m.
- Lunch: 11:30 a.m.-12:30 p.m.
- Afternoon Snack: 4 p.m

### SPECIAL EVENTS

- Water Day on Wednesday
  - Bring a towel, swimsuit, change of clothes, sunscreen, and water shoes

**NO CAMP ON FRIDAY, JULY 4!**  
**HAVE A FUN AND SAFE HOLIDAY**

### GUEST SPEAKERS

- Monday - Arielle Pierce
  - 4H Youth Development Presentation

### REMINDERS

- It's Holiday Week!
  - **Check the Camp Calendar to see what to wear each day**
- Write your camper's name on their items
- Check Lost & Found everyday!
- Southern Snoballs (Snow Cones)
  - Cash Only: \$3, \$5, or \$6



### CAMPER SIGN-IN/OUT POLICY

A parent or guardian is required to sign in and sign out each camper daily. Only people who have previously been listed on the Supplemental Information Sheet will be permitted to sign for your child at pick up. Photo ID will be required. Changes must be submitted in writing.

# WA-KE TRADITIONAL CAMP WEEK 4

## IMPORTANT ANNOUNCEMENTS & REMINDERS

Around the World Week  
Southern Snoballs on Friday! **Cash Only**: \$3, \$4, and \$6.  
Make sure you check the lost & found every day!

**LOST &  
FOUND**

**Monday  
July 7**

Announcements  
and Ice Breakers



**Tuesday  
July 8**

Learn about Asia &  
Oceania

Page Field  
Presentation  
**Groups 9-13**  
9:30 a.m.-10:30 a.m.



**Wednesday  
July 9**

Learn about  
Europe



**Water Day**

**Thursday  
July 10**

Learn about North  
& South America



**FIELD TRIP**  
Skyzone  
9 a.m.-Noon

**Friday  
July 11**

Learn about Africa

Southern Snoballs  
2 p.m.



Camper of the Week  
Raffle

- **Camp Hours** 7:30 a.m. - 6 p.m.
- Have questions? Refer to the "How to have a Perfect Week at Camp" document.
- Calendars are subject to change



**CAMP DIRECTOR:**

Nyell Philp | [nphilp@leegov.com](mailto:nphilp@leegov.com)

**WA-KE HATCHEE REC CENTER TRADITIONAL CAMP**  
(239) 533-6850

# PERFECT WEEK AT TRADITIONAL CAMP

## WA-KE HATCHEE WEEK 4

### CAMPER DAILY'S

- Sunscreen
- Water Bottle
- A.M. Snack
- Lunch
- P.M. Snack
- Closed-toed Shoes (No Crocs)
- Bug Spray

### GUARDIAN DAILY'S

- Make sure to complete your Supplemental Form before Monday
- Have your photo ID ready at sign-out
- Phones and other electronics are not allowed. Campers have access to the center phone whenever needed! :)

### CAMP HOURS

- Camp Hours: 7:30 a.m.-6 p.m.
- Morning Snack: 9:15 a.m.
- Lunch: 11:30 a.m.-12:30 p.m.
- Afternoon Snack: 4 p.m.

### SPECIAL EVENTS

- Water Day on Wednesday
  - Bring a towel, swimsuit, change of clothes, sunscreen, and water shoes
- **ALL CAMP FIELD TRIP:** SkyZone Trampoline Park on Thursday!
  - Wear your camp shirt
  - Arrive to camp by **8 a.m.**

### GUEST SPEAKERS

- Tuesday
  - Page Field Airport Presentation
  - Only for Groups 9-13

### REMINDERS

- **It's Around the World Week!**
- Write your camper's name on their items
- Check Lost & Found everyday!
- Southern Snoballs (Snow Cones)
  - Cash Only: \$3, \$5, or \$6

### CAMPER SIGN-IN/OUT POLICY

A parent or guardian is required to sign in and sign out each camper daily. Only people who have previously been listed on the Supplemental Information Sheet will be permitted to sign for your child at pick up. Photo ID will be required. Changes must be submitted in writing.



# WA-KE TRADITIONAL CAMP WEEK 5

## IMPORTANT ANNOUNCEMENTS & REMINDERS

Adventure Week

Southern Snoballs on Friday! **Cash Only:** \$3, \$4, and \$6.

Make sure you check the lost & found every day!

**LOST &  
FOUND**

**Monday  
July 14**

Announcements  
and Ice Breakers



Talent Show Practice



**Tuesday  
July 15**

Olympic Games Day



Public Safety  
Presentation

Daniela Rambhajan  
9 a.m.-10:30 a.m.



Talent Show Practice

**Wednesday  
July 16**

Survivor Games Day



**Water Day**

Talent Show Practice

**Thursday  
July 17**

Obstacle Course Day



Southern Snoballs  
2 p.m.



Talent Show Practice

**Friday  
July 18**



**TALENT SHOW**

Parents are invited!

3 p.m.



Camper of the Week  
Raffle

- **Camp Hours** 7:30 a.m. - 6 p.m.
- Have questions? Refer to the "How to have a Perfect Week at Camp" document.
- Calendars are subject to change



**CAMP DIRECTOR:**

Nyell Philp | [nphilp@leegov.com](mailto:nphilp@leegov.com)

**WA-KE HATCHEE REC CENTER TRADITIONAL CAMP**  
(239) 533-6850



# PERFECT WEEK AT TRADITIONAL CAMP

## WA-KE HATCHEE WEEK 5

### CAMPER DAILY'S

- Sunscreen
- Water Bottle
- A.M. Snack
- Lunch
- P.M. Snack
- Closed-toed Shoes (No Crocs)
- Bug Spray

### GUARDIAN DAILY'S

- Make sure to complete your Supplemental Form before Monday
- Have your photo ID ready at sign-out
- Phones and other electronics are not allowed. Campers have access to the center phone whenever needed! :)

### CAMP HOURS

- Camp Hours: 7:30 a.m.-6 p.m.
- Morning Snack: 9:15 a.m.
- Lunch: 11:30 a.m.-12:30 p.m.
- Afternoon Snack: 4 p.m.

### SPECIAL EVENTS

- Water Day on Wednesday
  - Bring a towel, swimsuit, change of clothes, sunscreen, and water shoes
- **FAMILY EVENT:** Talent Show on Friday!
  - Campers who are participating will be practicing all week long to prepare!
  - Family and friends are invited
  - 3 p.m.

### GUEST SPEAKERS

- Tuesday - Daniela Rambhajan
  - Public Safety Presentation

### REMINDERS

- **It's Adventure Week!**
  - Make sure to wear comfortable clothing
- Write your camper's name on their items
- Check Lost & Found everyday!
- Southern Snoballs (Snow Cones)
  - Cash Only: \$3, \$5, or \$6

### CAMPER SIGN-IN/OUT POLICY

A parent or guardian is required to sign in and sign out each camper daily. Only people who have previously been listed on the Supplemental Information Sheet will be permitted to sign for your child at pick up. Photo ID will be required. Changes must be submitted in writing.



# WA-KE TRADITIONAL CAMP WEEK 6

## IMPORTANT ANNOUNCEMENTS & REMINDERS

Board Game Week

Southern Snoballs on Friday! **Cash Only:** \$3, \$4, and \$6.

Make sure you check the lost & found every day!

**LOST &  
FOUND**

**Monday  
July 21**

Announcement  
and Ice Breakers

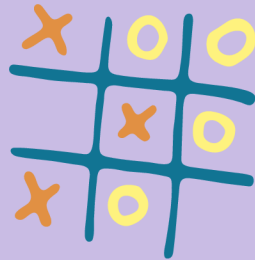


**FOSTER VILLAGE  
CHARITY DRIVE WEEK!  
BRING IN YOUR  
DONATIONS FOR LOCAL  
FOSTER CHILDREN!**



**Tuesday  
July 22**

Giant Tic Tac Toe



Ranger Presentation  
9 a.m.-11 a.m.



**Wednesday  
July 23**

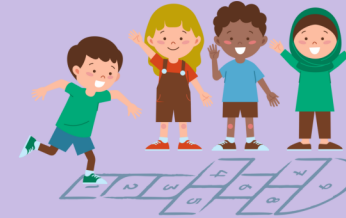
Life Sized  
Four in a Row



**Water Day**

**Thursday  
July 24**

Giant Hopscotch



Conservation 20/20  
Presentation  
Greg Kosick  
9 a.m.-11 a.m.

**Friday  
July 25**



**FIELD TRIP**  
Lakes Park  
Groups 1-4  
9 a.m.-Noon

Southern Snoballs  
2 p.m.



Camper of the Week  
Raffle

- **Camp Hours** 7:30 a.m. - 6 p.m.
- Have questions? Refer to the "How to have a Perfect Week at Camp" document.
- Calendars are subject to change



### CAMP DIRECTOR:

Nyell Philp | [nphilp@leegov.com](mailto:nphilp@leegov.com)

**WA-KE HATCHEE REC CENTER TRADITIONAL CAMP**  
(239) 533-6850

# PERFECT WEEK AT TRADITIONAL CAMP

## WA-KE HATCHEE WEEK 6

### CAMPER DAILY'S

- Sunscreen
- Water Bottle
- A.M. Snack
- Lunch
- P.M. Snack
- Closed-toed Shoes (No Crocs)
- Bug Spray

### GUARDIAN DAILY'S

- Make sure to complete your Supplemental Form before Monday
- Have your photo ID ready at sign-out
- Phones and other electronics are not allowed. Campers have access to the center phone whenever needed! :)

### CAMP HOURS

- Camp Hours: 7:30 a.m.-6 p.m.
- Morning Snack: 9:15 a.m.
- Lunch: 11:30 a.m.-12:30 p.m.
- Afternoon Snack: 4 p.m.

### SPECIAL EVENTS

- **FOSTER VILLAGE CHARITY DRIVE:**
  - Bring in BLANK to donate \*\*check in with contact to see what they'd prefer\*\*
- Water Day on Wednesday
  - Bring a towel, swimsuit, change of clothes, sunscreen, and water shoes
- **FIELD TRIP:** Lakes Park on Friday!
  - Groups 1-4: Wear your camp shirt
  - 9 a.m.-Noon

### GUEST SPEAKERS

- Tuesday
  - Lee County Park Ranger Presentation
- Thursday - Greg Kosick
  - Conversation 20/20 Presentation

### REMINDERS

- **It's Board Game Week!**
  - Make sure to wear comfortable clothing
- Write your camper's name on their items
- Check Lost & Found everyday!
- Southern Snoballs (Snow Cones)
  - Cash Only: \$3, \$5, or \$6



### CAMPER SIGN-IN/OUT POLICY

A parent or guardian is required to sign in and sign out each camper daily. Only people who have previously been listed on the Supplemental Information Sheet will be permitted to sign for your child at pick up. Photo ID will be required. Changes must be submitted in writing.

# WA-KE MIDDLE SCHOOL CAMP WEEK 7

## IMPORTANT ANNOUNCEMENTS & REMINDERS

Entertainment Week

Southern Snoballs on Thursday! **Cash Only:** \$3, \$4, and \$6.

Make sure you check the lost & found every day!

**LOST &  
FOUND**

**Monday  
July 28**

Announcements  
and Ice Breakers



**Tuesday  
July 29**

Pajama Day



Calusa Blueway  
Presentation  
Mike Hammond  
9 a.m.-11:30 a.m.

**Wednesday  
July 30**

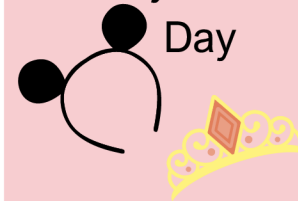
Career Day



**Water Day**

**Thursday  
July 31**

Disney Dress Up  
Day



FCGU ROCK  
Presentation

9 a.m.-11:30 a.m.

**FGCU**

Southern Snoballs  
2 p.m.



**Friday  
August 1**

**FIELD TRIP**

Florida Repertory

Theatre

Peter Pan

11 a.m.



**FLORIDA REP**

Camper of the Week  
Raffle

**HAVE A  
GREAT  
SCHOOL  
YEAR!**

- **Camp Hours** 7:30 a.m. - 6 p.m.
- Have questions? Refer to the "How to have a Perfect Week at Camp" document.
- Calendars are subject to change



**CAMP DIRECTOR:**

Nyell Philp | [nphilp@leegov.com](mailto:nphilp@leegov.com)

**WA-KE HATCHEE REC CENTER TRADITIONAL CAMP**  
(239) 533-6850

# PERFECT WEEK AT TRADITIONAL CAMP

## WA-KE HATCHEE WEEK 7

### CAMPER DAILY'S

- Sunscreen
- Water Bottle
- A.M. Snack
- Lunch
- P.M. Snack
- Closed-toed Shoes (No Crocs)
- Bug Spray

### GUARDIAN DAILY'S

- Make sure to complete your Supplemental Form before Monday
- Have your photo ID ready at sign-out
- Phones and other electronics are not allowed. Campers have access to the center phone whenever needed! :)

### CAMP HOURS

- Camp Hours: 7:30 a.m.-6 p.m.
- Morning Snack: 9:15 a.m.
- Lunch: 11:30 a.m.-12:30 p.m.
- Afternoon Snack: 4 p.m.

### SPECIAL EVENTS

- Water Day on Wednesday
  - Bring a towel, swimsuit, change of clothes, sunscreen, and water shoes
- **ALL CAMP FIELD TRIP:** Florida Repertory Theatre Play on Friday!
  - Wear your camp shirt
  - Peter Pan
  - Please arrive by **10 a.m.**

**HAVE A WONDERFUL SCHOOL YEAR!**

### GUEST SPEAKERS

- Tuesday - Mike Hammond
  - Calusa Blueway Presentation
- Thursday - PERSON NAME
  - FGCU R.O.C.K Presentation

### REMINDERS

- **It's Entertainment Week!**
  - Check the Camp Calendar to see what to wear each day
- Write your camper's name on their items
- Check Lost & Found everyday!
- Southern Snoballs (Snow Cones)
  - Cash Only: \$3, \$5, or \$6



### CAMPER SIGN-IN/OUT POLICY

A parent or guardian is required to sign in and sign out each camper daily. Only people who have previously been listed on the Supplemental Information Sheet will be permitted to sign for your child at pick up. Photo ID will be required. Changes must be submitted in writing.