

# WA-KE MIDDLE SCHOOL CAMP WEEK 1

## IMPORTANT ANNOUNCEMENTS & REMINDERS

Sports Week

Southern Snoballs on Friday! **Cash Only:** \$3, \$5, and \$6

Make sure you check the lost and found everyday!

**LOST &  
FOUND**

**Monday  
June 16**

Announcements and  
Ice Breakers!



**Tuesday  
June 17**

Soccer Day  
Wear a Soccer Jersey



Public Safety Field Trip  
Group 1 & 2  
9 a.m. - 10:30 a.m.



**Wednesday  
June 18**

Baseball Day  
Wear a Baseball Jersey



ALL CAMP FIELD TRIP  
Mighty Mussel Baseball  
11 a.m.-3 p.m.



**Thursday  
June 19**

All Sports Day  
Wear your favorite  
Jersey



Public Safety Field Trip  
Group 3 & 4  
9 a.m. - 10:30 a.m.



**Friday  
June 20**

Track and Field Day



Hanley Foundation  
Presentation  
9:30 a.m. - 10:30 a.m.



Southern Snoballs  
2 p.m.  
Camper of the Week  
Raffle!

- **Camp Hours** 7:30 a.m. - 6 p.m.
- Have questions? Refer to the "How to have a Perfect Week at Camp" document.
- Calendars are subject to change



### CAMP DIRECTOR:

Juliana Silva | [jsilva@leegov.com](mailto:jsilva@leegov.com)

**WA-KE HATCHEE REC CENTER MIDDLE CAMP**  
(239) 533-6850

# PERFECT WEEK AT MIDDLE CAMP

## WA-KE HATCHEE WEEK 1

### CAMPER DAILY'S

- Sunscreen
- Water Bottle
- A.M. Snack
- Lunch
- P.M. Snack
- Closed-toed Shoes (No Crocs)
- Bug Spray if needed

### GUARDIAN DAILY'S

- Please make sure your supplemental form is completed before the first day!
- Photo ID required at sign out
- Phones and electronics are not allowed.
  - Campers have access to the center phone whenever needed!

### CAMP HOURS

- Camp Hours: 7:30 a.m.-6 p.m.
- Morning Snack: 9:15 a.m.
- Lunch: 11:30 a.m.-12:30 p.m.
- Afternoon Snack: 4 p.m.

### SPECIAL EVENTS

- **ALL CAMP FIELD TRIP:** Might Mussels Baseball Game on Wednesday!
  - Wear your camp shirt
  - We will leave at **10:30 a.m.** sharp!
  - Concession stand will be open but lines will be long so please bring lunch
- Public Safety Field Trip
  - Tuesday: Group 1 & 2
  - Thursday: Group 3 & 4
- NO POOL DAYS THIS WEEK

### GUEST SPEAKERS

- Friday - Aly Spradley
  - Hanley Foundation

### REMINDERS

- **It's Sports Week!**
  - **Check the Camp Calendar to see what to wear each day**
- Clearly write campers name on all items
- Check Lost & Found everyday!
- Pack a swimsuit, towel, change of clothes and sunscreen every week!
- Southern SnoBalls
  - Cash Only - \$3, \$5, \$6



### CAMPER SIGN-IN/OUT POLICY

A parent or guardian is required to sign in and sign out each camper daily. Only people who have previously been listed on the Supplemental Information Sheet will be permitted to sign for your child at pick up. Photo ID will be required. Changes must be submitted in writing.

# WA-KE MIDDLE SCHOOL CAMP WEEK 2

## IMPORTANT ANNOUNCEMENTS & REMINDERS

Spirit Week

Southern Snoballs on Friday! **Cash Only:** \$3, \$5, and \$6

Make sure you check the lost and found everyday!

**LOST &  
FOUND**

**Monday  
June 23**

Announcements and  
Ice Breakers!



San Carlos Pool  
11 a.m.-1 p.m.  
Group 1 & 2



**Tuesday  
June 24**

Crazy Hair Day

Field Day with  
Estero Rec Center  
10 a.m.-12 p.m.



**Wednesday  
June 25**

Wacky Wednesday  
Come up with your  
silliest outfit

San Carlos Pool  
11 a.m.-1 p.m.  
Group 3 & 4



**Thursday  
June 26**

Twin Day  
Match outfits with a  
friend/counselor

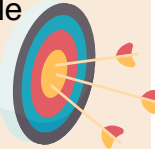


Conservation 2020  
Greg Kosick  
9 a.m.-11:30 a.m.

**Friday  
June 27**

Rainbow Day  
Wear as many colors as  
possible

Archery  
9 a.m.



Groups 1 & 2

Southern Snoballs  
2 p.m.

COMMUNITY EVENT  
Moore's Soul Food  
Truck Friday!  
Parents and the  
Community invited!  
5 PM  
Camper of the Week  
Raffle!

- **Camp Hours** 7:30 a.m. - 6 p.m.
- Have questions? Refer to the "How to have a Perfect Week at Camp" document.
- Calendars are subject to change



### CAMP DIRECTOR:

Juliana Silva | [jsilva@leegov.com](mailto:jsilva@leegov.com)

**WA-KE HATCHEE REC CENTER MIDDLE CAMP**  
(239) 533-6850

# PERFECT WEEK AT MIDDLE CAMP

## WA-KE HATCHEE WEEK 2

### CAMPER DAILY'S

- Sunscreen
- Water Bottle
- A.M. Snack
- Lunch
- P.M. Snack
- Closed-toed Shoes (No Crocs)
- Bug Spray if needed

### GUARDIAN DAILY'S

- Please make sure your supplemental form is completed before the first day!
- Photo ID required at sign out
- Phones and electronics are not allowed.
  - Campers have access to the center phone whenever needed!

### CAMP HOURS

- Camp Hours: 7:30 a.m.-6 p.m.
- Morning Snack: 9:15 a.m.
- Lunch: 11:30 a.m.-12:30 p.m.
- Afternoon Snack: 4 p.m.

### SPECIAL EVENTS

- Pool days on Mondays and Wednesdays from 11 a.m.-1 p.m.
  - Mondays: Groups 1 & 2
  - Wednesdays: Groups 3 & 4
- Field Day with Estero Rec Center Middle Camp on Tuesday!
- **COMMUNITY EVENT:** Moore's Soul Food-Food Truck Friday!
  - Parents and the Community invited at 5 PM to enjoy dinner in the park!

### GUEST SPEAKERS

- Thursday - Greg Kosick
  - Conservation 20/20
- Friday - Brittany Bremer
  - Archery

### REMINDERS

- **It's Spirit Week!**
  - **Check the Camp Calendar to see what to wear each day!**
- Clearly write campers name on all items
- Check lost & Found everyday!
- Pack a swimsuit, towel, change of clothes and sunscreen every week!
- Southern SnoBalls
  - Cash Only - \$3, \$5, \$6



### CAMPER SIGN-IN/OUT POLICY

A parent or guardian is required to sign in and sign out each camper daily. Only people who have previously been listed on the Supplemental Information Sheet will be permitted to sign for your child at pick up. Photo ID will be required. Changes must be submitted in writing.

# WA-KE MIDDLE SCHOOL CAMP WEEK 3

## IMPORTANT ANNOUNCEMENTS & REMINDERS

Holiday Week

Southern Snoballs on Friday! **Cash Only:** \$3, \$5, and \$6

Make sure you check the lost and found everyday!

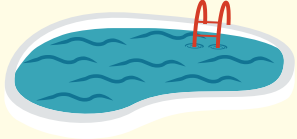
**LOST & FOUND**

**Monday  
June 30**

Announcements and  
Ice Breakers!



San Carlos Pool  
11 a.m.-1 p.m.  
Group 1 & 2



**Tuesday  
July 1**

Halloween Day  
Wear your camp  
appropriate costume

**TRICK  
OR  
TREAT**

Six Mile Cypress  
Self Guided Walk  
9 a.m.-12:30 p.m.  
Groups 1 & 2

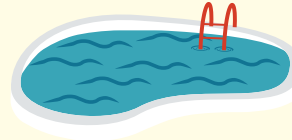


**Wednesday  
July 2**

Winter Holiday Day  
Wear your favorite  
holiday outfit



San Carlos Pool  
11 a.m.-1 p.m.  
Group 3 & 4

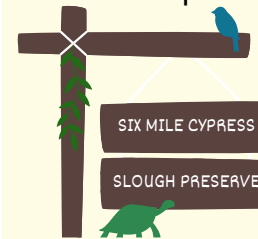


**Thursday  
July 3**

Happy 4<sup>th</sup> of July  
Wear red, white & blue



Six Mile Cypress  
Self Guided Walk  
9 a.m.-12:30 p.m.  
Groups 3 & 4



Southern Snoballs  
2 p.m.  
Camper of the Week  
Raffle!

**Friday  
July 4**

No Camp

Have a safe and fun  
holiday!!



- **Camp Hours** 7:30 a.m. - 6 p.m.
- Have questions? Refer to the "How to have a Perfect Week at Camp" document.
- Calendars are subject to change



### CAMP DIRECTOR:

Juliana Silva | [jsilva@leegov.com](mailto:jsilva@leegov.com)

**WA-KE HATCHEE REC CENTER MIDDLE CAMP**  
(239) 533-6850

# PERFECT WEEK AT MIDDLE CAMP

## WA-KE HATCHEE WEEK 3

### CAMPER DAILY'S

- Sunscreen
- Water Bottle
- A.M. Snack
- Lunch
- P.M. Snack
- Closed-toed Shoes (No Crocs)
- Bug Spray if needed

### GUARDIAN DAILY'S

- Please make sure your supplemental form is completed before the first day!
- Photo ID required at sign out
- Phones and electronics are not allowed.
  - Campers have access to the center phone whenever needed!

### CAMP HOURS

- Camp Hours: 7:30 a.m.-6 p.m.
- Morning Snack: 9:15 a.m.
- Lunch: 11:30 a.m.-12:30 p.m.
- Afternoon Snack: 4 p.m.

### SPECIAL EVENTS

- Pool days on Mondays and Wednesdays
  - Mondays: Groups 1 & 2
  - Wednesdays: Groups 3 & 4
- Six Mile Cypress Self Guided Walk from 9 a.m.-12:30 p.m.
  - Tuesday: Groups 1 & 2
  - Thursday: Groups 3 & 4

**NO CAMP ON FRIDAY, JULY 4!**  
**HAVE A SAFE AND FUN HOLIDAY!**

### GUEST SPEAKERS

### REMINDERS

- It's Holiday Week!
  - **Check the Camp Calendar to see what to wear each day!**
- Clearly write campers name on all items
- Check Lost & Found everyday!
- Pack a swimsuit, towel, change of clothes and sunscreen every week!
- Southern SnoBalls
  - Cash Only - \$3, \$5, \$6



### CAMPER SIGN-IN/OUT POLICY

A parent or guardian is required to sign in and sign out each camper daily. Only people who have previously been listed on the Supplemental Information Sheet will be permitted to sign for your child at pick up. Photo ID will be required. Changes must be submitted in writing.



# WA-KE MIDDLE SCHOOL CAMP WEEK 4

## IMPORTANT ANNOUNCEMENTS & REMINDERS

Around the World Week

Southern Snoballs on Friday! **Cash Only:** \$3, \$4, and \$6.

Make sure you check the lost and found everyday!

**LOST &  
FOUND**

**Monday  
July 7**

Announcements and  
Ice Breakers!



San Carlos Pool  
11 a.m.-1 p.m.  
Group 1 & 2



**Tuesday  
July 8**

Learn about Asia and  
Oceania

Page Field Airport  
Presentation  
10:30 a.m. - 11:30 p.m.



**Wednesday  
July 9**

Learn about Europe

San Carlos Pool  
11 a.m.-1 p.m.  
Group 3 & 4



**Thursday  
July 10**

Learn about North and  
South America



ALL CAMP FIELD TRIP  
SKYZONE  
9 a.m.-12 p.m.

**Friday  
July 11**

Learn about Africa



Southern Snoballs  
2 p.m.

Camper of the Week  
Raffle!

- **Camp Hours** 7:30 a.m. - 6 p.m.
- Have questions? Refer to the "How to have a Perfect Week at Camp" document.
- Calendars are subject to change



### CAMP DIRECTOR:

Juliana Silva | [jsilva@leegov.com](mailto:jsilva@leegov.com)

**WA-KE HATCHEE REC CENTER MIDDLE CAMP**  
(239) 533-6850

# PERFECT WEEK AT MIDDLE CAMP

## WA-KE HATCHEE WEEK 4

### CAMPER DAILY'S

- Sunscreen
- Water Bottle
- A.M. Snack
- Lunch
- P.M. Snack
- Closed-toed Shoes (No Crocs)
- Bug Spray if needed

### GUARDIAN DAILY'S

- Please make sure your supplemental form is completed before the first day!
- Photo ID required at sign out
- Phones and electronics are not allowed.
- Campers have access to the center phone whenever needed!

### CAMP HOURS

- Camp Hours: 7:30 a.m.-6 p.m.
- Morning Snack: 9:15 a.m.
- Lunch: 11:30 a.m.-12:30 p.m.
- Afternoon Snack: 4 p.m.

### SPECIAL EVENTS

- Pool days on Mondays and Wednesdays
  - Mondays: Groups 1 & 2
  - Wednesdays: Groups 3 & 4
- **ALL CAMP FIELD TRIP:** SkyZone Trampoline Park on Thursday!
  - Wear your camp shirt
  - Arrive to camp by **8 a.m.**
  - Concession stand will be open but lines will be long so please bring lunch

### GUEST SPEAKERS

- Tuesday
  - Page Field Airport Presentation

### REMINDERS

- **It's Around the World Week!**
- Clearly write campers name on all items
- Check Lost & Found everyday!
- Pack a swimsuit, towel, change of clothes and sunscreen every week!
- Southern SnoBalls
  - Cash Only - \$3, \$5, \$6



### CAMPER SIGN-IN/OUT POLICY

A parent or guardian is required to sign in and sign out each camper daily. Only people who have previously been listed on the Supplemental Information Sheet will be permitted to sign for your child at pick up. Photo ID will be required. Changes must be submitted in writing.



# WA-KE MIDDLE SCHOOL CAMP WEEK 5

## IMPORTANT ANNOUNCEMENTS & REMINDERS

Adventure Week

Southern Snoballs on Friday! **Cash Only:** \$3, \$4, and \$6.

Make sure you check the lost and found everyday!

**LOST & FOUND**

**Monday  
July 14**

Announcements and  
Ice Breakers!



San Carlos Pool  
11 a.m.-1 p.m.  
Group 1 & 2



Talent Show Practice

**Tuesday  
July 15**

Olympic Games Day



Lakes Regional Library  
Field Trip  
10 a.m.-11:30 a.m.



Talent Show Practice

**Wednesday  
July 16**

Survivor Games Day



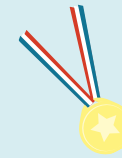
San Carlos Pool  
11 a.m.-1 p.m.  
Group 3 & 4



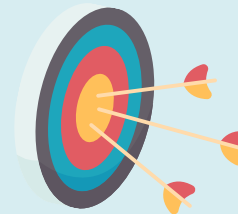
Talent Show Practice

**Thursday  
July 17**

Obstacle Course Day



Archery  
9 a.m.  
Group 3 & 4



Talent Show Practice

**Friday  
July 18**



TALENT SHOW  
Parents are invited!  
3 p.m.



Southern Snoballs  
2 p.m.

Camper of the Week  
Raffle!

- **Camp Hours** 7:30 a.m. - 6 p.m.
- Have questions? Refer to the "How to have a Perfect Week at Camp" document.
- Calendars are subject to change



### CAMP DIRECTOR:

Juliana Silva | [jsilva@leegov.com](mailto:jsilva@leegov.com)

**WA-KE HATCHEE REC CENTER MIDDLE CAMP**  
(239) 533-6850

# PERFECT WEEK AT MIDDLE CAMP

## WAKE HATCHEE WEEK 5

### CAMPER DAILY'S

- Sunscreen
- Water Bottle
- A.M. Snack
- Lunch
- P.M. Snack
- Closed-toed Shoes (No Crocs)
- Bug Spray if needed

### GUARDIAN DAILY'S

- Please make sure your supplemental form is completed before the first day!
- Photo ID required at sign out
- Phones and electronics are not allowed.
  - Campers have access to the center phone whenever needed!

### CAMP HOURS

- Camp Hours: 7:30 a.m.-6 p.m.
- Morning Snack: 9:15 a.m.
- Lunch: 11:30 a.m.-12:30 p.m.
- Afternoon Snack: 4 p.m.

### SPECIAL EVENTS

- Pool days on Mondays and Wednesdays
  - Mondays: Groups 1 & 2
  - Wednesdays: Groups 3 & 4
- Lakes Regional Library
  - All Groups! (Groups 1-4)
  - Please arrive by **9:30 a.m.**
- **FAMILY EVENT:** Talent Show on Friday!
  - Campers who are participating will be practicing all week long to prepare!
  - Family and friends are invited at 3 p.m.

### GUEST SPEAKERS

- Thursday - Brittany Bremer
  - Archery

### REMINDERS

- **It's Adventure Week!**
- Clearly write campers name on all items
- Check Lost & Found everyday!
- Pack a swimsuit, towel, change of clothes and sunscreen every week!
- Southern SnoBalls
  - Cash Only - \$3, \$5, \$6



### CAMPER SIGN-IN/OUT POLICY

A parent or guardian is required to sign in and sign out each camper daily. Only people who have previously been listed on the Supplemental Information Sheet will be permitted to sign for your child at pick up. Photo ID will be required. Changes must be submitted in writing.

# WA-KE MIDDLE SCHOOL CAMP WEEK 6

## IMPORTANT ANNOUNCEMENTS & REMINDERS

Board Game Week

Southern Snoballs on Friday! **Cash Only**: \$3, \$4, and \$6.

Make sure you check the lost and found everyday!

**LOST & FOUND**

**Monday  
July 21**

Announcements and  
Ice Breakers!



San Carlos Pool  
11 a.m.-1 p.m.  
Group 1 & 2

**FOSTER VILLAGE CHARITY  
DRIVE WEEK!  
BRING IN YOUR DONATIONS  
FOR LOCAL FOSTER  
CHILDREN!**



**Tuesday  
July 22**

Giant Tic Tac Toe

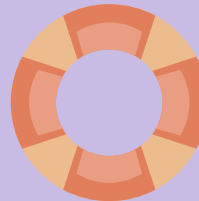
Ranger Presentation  
9 a.m.-11:30 a.m.



**Wednesday  
July 23**

Life Sized Four in a Row

San Carlos Pool  
11 a.m.-1 p.m.  
Group 3 & 4



**Thursday  
July 24**

Giant Hopscotch



Conservation 20/20  
Presentation  
Greg Kosick  
9 a.m.-11:30 a.m.

**Friday  
July 25**

Giant Pac Man



Southern Snoballs  
2 p.m.

Camper of the Week  
Raffle!

- **Camp Hours** 7:30 a.m. - 6 p.m.
- Have questions? Refer to the "How to have a Perfect Week at Camp" document.
- Calendars are subject to change



### CAMP DIRECTOR:

Juliana Silva | Jsilva@leegov.com

**WA-KE HATCHEE REC CENTER MIDDLE CAMP**  
(239) 533-6850

# PERFECT WEEK AT MIDDLE CAMP

## WA-KE HATCHEE WEEK 6

### CAMPER DAILY'S

- Sunscreen
- Water Bottle
- A.M. Snack
- Lunch
- P.M. Snack
- Closed-toed Shoes (No Crocs)
- Bug Spray if needed

### GUARDIAN DAILY'S

- Please make sure your supplemental form is completed before the first day!
- Photo ID required at sign out
- Phones and electronics are not allowed.
  - Campers have access to the center phone whenever needed!

### CAMP HOURS

- Camp Hours: 7:30 a.m.-6 p.m.
- Morning Snack: 9:15 a.m.
- Lunch: 11:30 a.m.-12:30 p.m.
- Afternoon Snack: 4 p.m.

### SPECIAL EVENTS

- Pool days on Mondays and Wednesdays
  - Mondays: Groups 1 & 2
  - Wednesdays: Groups 3 & 4
- **FOSTER VILLAGE CHARITY DRIVE**
- Bring in BLANK to donate \*\*check in with contact to see what they'd prefer\*\*

### GUEST SPEAKERS

- Tuesday
  - Lee County Park Ranger Presentation
- Thursday - Greg Kosick
  - Conservation 20/20

### REMINDERS

- **It's Board Game Week!**
- Clearly write campers name on all items
- Check lost & Found everyday!
- Pack a swimsuit, towel, change of clothes and sunscreen every week!
- Southern SnoBalls
  - Cash Only - \$3, \$5, \$6



### CAMPER SIGN-IN/OUT POLICY

A parent or guardian is required to sign in and sign out each camper daily. Only people who have previously been listed on the Supplemental Information Sheet will be permitted to sign for your child at pick up. Photo ID will be required. Changes must be submitted in writing.

# WA-KE MIDDLE SCHOOL CAMP WEEK 7

## IMPORTANT ANNOUNCEMENTS & REMINDERS

Entertainment Week

Southern Snoballs on Friday! **Cash Only**: \$3, \$4, and \$6.

Make sure you check the lost & found every day!

**LOST & FOUND**

**Monday  
July 28th**

Announcements and  
Ice Breakers



San Carlos Pool  
11 a.m.-1 p.m.  
Group 1 & 2



**Tuesday  
July 29th**

Pajama Day

Calusa Blueway  
Presentation  
Mike Hammond  
9 a.m.-11:30 a.m.



**Wednesday  
July 30th**

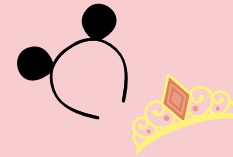
Career Day

San Carlos Pool  
11 a.m.-1 p.m.  
Group 3 & 4



**Thursday  
July 31st**

Disney Dress Up Day



FCGU ROCK  
(roots of compassion and  
kindness) Presentation  
9 a.m.-11:30 a.m.

**FGCU**



Southern Snoballs  
2 p.m.

**Friday  
August 1st**

FIELD TRIP  
Florida Repertory Theatre  
Peter Pan  
11 a.m.



**FLORIDA REP**

Camper of the Week  
Raffle!

**HAVE A  
GREAT  
SCHOOL  
YEAR!**

- **Camp Hours** 7:30 a.m. - 6 p.m.
- Have questions? Refer to the "How to have a Perfect Week at Camp" document.
- Calendars are subject to change



### CAMP DIRECTOR:

Juliana Silva | [jsilva@leegov.com](mailto:jsilva@leegov.com)

**WA-KE HATCHEE REC CENTER TRADITIONAL CAMP**  
(239) 533-6850

# PERFECT WEEK AT MIDDLE CAMP

## WA-KE HATCHEE WEEK 7

### CAMPER DAILY'S

- Sunscreen
- Water Bottle
- A.M. Snack
- Lunch
- P.M. Snack
- Closed-toed Shoes (No Crocs)
- Bug Spray if needed

### GUARDIAN DAILY'S

- Please make sure your supplemental form is completed before the first day!
- Photo ID required at sign out
- Phones and electronics are not allowed.
  - Campers have access to the center phone whenever needed!

### CAMP HOURS

- Camp Hours: 7:30 a.m.-6 p.m.
- Morning Snack: 9:15 a.m.
- Lunch: 11:30 a.m.-12:30 p.m.
- Afternoon Snack: 4 p.m.

### SPECIAL EVENTS

- Pool days on Mondays and Wednesdays
  - Mondays: Groups 1 & 2
  - Wednesdays: Groups 3 & 4
- **ALL CAMP FIELD TRIP:** Florida Repertory Theatre Play on Friday!
  - Peter Pan
  - Please arrive by **10 a.m.**

### GUEST SPEAKERS

- Tuesday - Mike Hammond
  - Calusa Blueway Presentation
- Thursday - PERSON NAME
  - FGCU R.O.C.K Presentation

### REMINDERS

- **It's Board Game Week!**
- Write your camper's name on their items
- Check Lost & Found everyday!
- Southern Snoballs
- Cash Only: \$3, \$5, or \$6



### CAMPER SIGN-IN/OUT POLICY

A parent or guardian is required to sign in and sign out each camper daily. Only people who have previously been listed on the Supplemental Information Sheet will be permitted to sign for your child at pick up. Photo ID will be required. Changes must be submitted in writing.