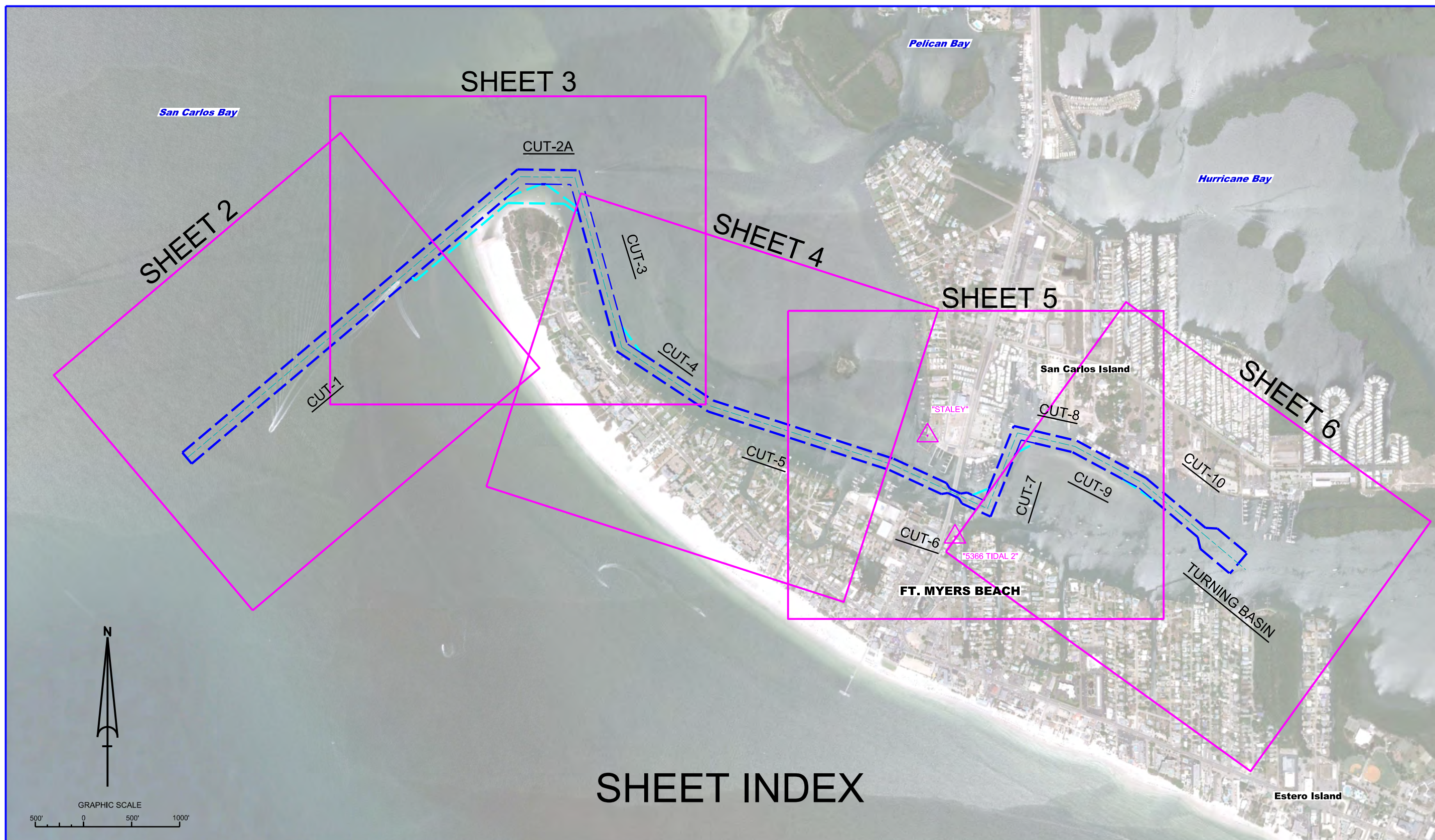


# FORT MYERS BEACH HARBOR LEE COUNTY, FLORIDA PROJECT CONDITION SURVEY FY14 11 & 12-FOOT PROJECT

US Army Corps of Engineers  
Jacksonville District

SAFETY ON THIS JOB  
DEPENDS ON YOU

DEPARTMENT OF THE ARMY  
JACKSONVILLE DISTRICT, CORPS OF ENGINEERS  
JACKSONVILLE, FLORIDA



- SURVEY NOTES**
- REFER TO SURVEY NO. 14-101.
  - SOUNDINGS ARE IN FEET AND TENTHS AND REFER TO NOAA'S REPORTED MEAN LOWER LOW WATER (MLLW) OF THE 1983-2001 TIDAL EPOCH, AS REPORTED BY THE NATIONAL OCEANIC AND ATMOSPHERIC ADMINISTRATION (NOAA). NOAA'S DATUM MODEL WAS USED AND CALIBRATED TO THE PUBLISHED MLLW HEIGHTS OF THE BENCH MARKS ASSOCIATED WITH THE TIDE GAGE SITE SPECIFIED BELOW:  
  
NOAA TIDAL STATION 872-5366 (PID: AD1372) ALL CUTS.
  - TIDAL REDUCTIONS WERE OBTAINED UTILIZING A REAL-TIME KINEMATIC (RTK) GPS AND REFERENCED TO MLLW UTILIZING A HYPACK KINEMATIC TIDE DATUM (KTD) MODEL. KTD FILE NAME IS: "SPC-FL-WEST-2010-12-07.KTD".
  - ALL ELEVATIONS ARE BELOW THE CHART DATUM UNLESS PRECEDED BY A (+) SIGN.
  - PLANE COORDINATES ARE BASED ON THE TRANSVERSE MERCATOR PROJECTION FOR THE WEST ZONE OF FLORIDA AND REFERENCED TO NORTH AMERICAN DATUM OF 1983 (NAD83).
  - ALL AZIMUTHS ARE GRID; RECKONED CLOCKWISE FROM SOUTH.
  - ALL STATIONING REFERS TO THE CENTERLINE OF THE CHANNEL.
  - SURVEY WAS PERFORMED USING REAL-TIME KINEMATIC GPS FOR POSITIONING WITH THE FOLLOWING REFERENCE BASE LOCATIONS:  
"REFERENCE BASE LOCATED AT "STALEY" (PID: BBCJ30)  
"TIDE STAFF LOCATED AT "872-5366 TIDAL 2" (PID: AD1372)  
VERTICAL MEASUREMENTS WERE MADE USING AN EDGETECH 6205 ALL SOUNDINGS SHOWN ARE IN HIGH FREQUENCY.
- | VESSEL | DATE OF SURVEY | CUT        |
|--------|----------------|------------|
| SB-48  | 14-15 MAY 2014 | 1-10, T.B. |
- AIDS TO NAVIGATION WERE LOCATED DURING THIS SURVEY.
  - THE INFORMATION DEPICTED ON THIS MAP REPRESENTS THE RESULTS OF SURVEYS MADE ON THE DATES INDICATED ABOVE AND CAN ONLY BE CONSIDERED AS INDICATING THE GENERAL CONDITIONS AT THAT TIME. THIS CHART IS SOLELY FOR THE DISTRIBUTION OF AVAILABLE DEPTHS AT THE TIME OF THE SURVEY AND IS NOT TO BE USED FOR NAVIGATION.
  - SURVEY ACCURACY PERFORMANCE STANDARDS, QUALITY CONTROL, AND QUALITY ASSURANCE REQUIREMENTS WERE FOLLOWED DURING THIS SURVEY IN ACCORDANCE WITH USACE EM 1110-2-1003, HYDROGRAPHIC SURVEYING, 30 NOV 13.

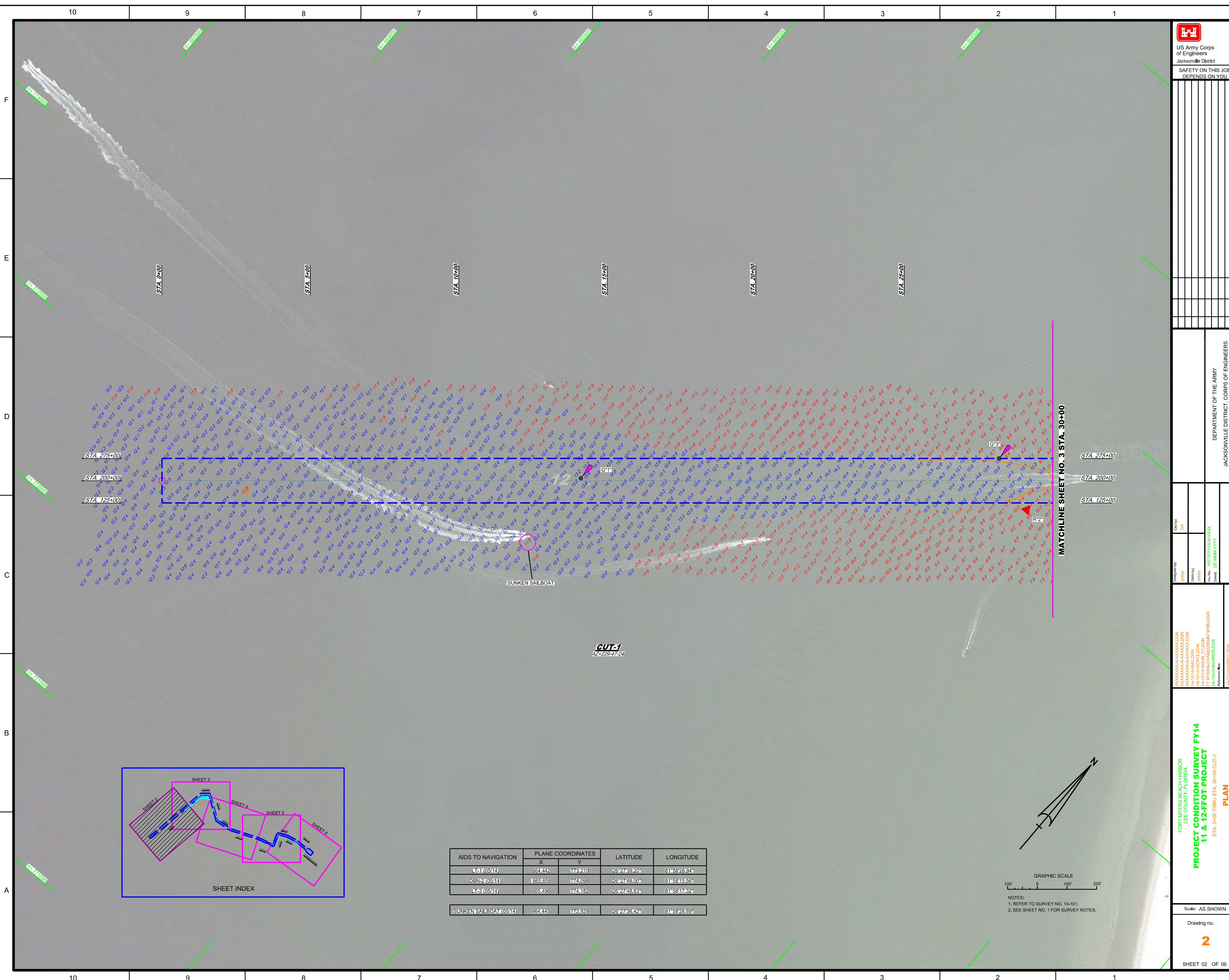
LEGEND	
	MONUMENT
	LIGHTED BEACON
	GREEN DAY BEACON
	RED DAY BEACON
	RED LIGHTED BUOY
	GREEN LIGHTED BUOY
	CAN BUOY
	NUN BUOY
	TIDE STAFF
	PROJECT DEPTH

PROJECT CONDITION SURVEY FY14  
11 & 12-FOOT PROJECT  
INDEX, LOCATION AND VICINITY  
MAP

Scale: AS SHOWN

Drawing no.  
**1**

SHEET 01 OF 06

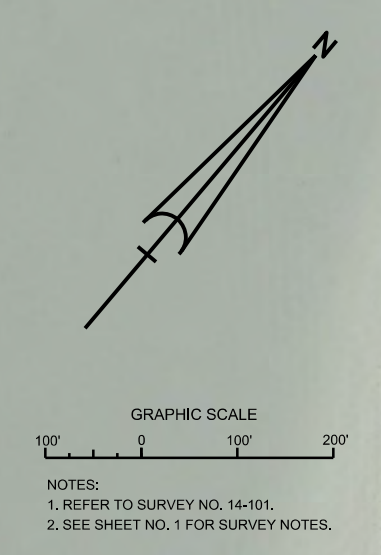


Designed By: WRM  
 Drawn By: WRM  
 File No: W0325P-0000-0000  
 Project: FT MYERS BEACH HARBOR WINTERWAGON  
 Reference Map: 14-101-MSH-02.DGN  
 Plot Name: 14-101-MSH-02.DGN

**PROJECT CONDITION SURVEY FY14**  
 FORT MYERS BEACH HARBOR  
 LEE COUNTY, FLORIDA  
**11 & 12-FOOT PROJECT**  
 STA. 0+00 THRU STA. 30+00 CUT-1  
**PLAN**



AIDS TO NAVIGATION	PLANE COORDINATES		LATITUDE	LONGITUDE
	X	Y		
11 (05/14)	664442	774210	28°27'39.20"	81°58'28.94"
DBN-2 (05/14)	665658	774098	28°27'48.00"	81°58'15.56"
12 (05/14)	665496	774182	28°27'48.89"	81°58'17.32"
SUNKEN SAILBOAT (05/14)	664445	772829	28°27'38.42"	81°58'28.89"



NOTES:  
 1. REFER TO SURVEY NO. 14-101.  
 2. SEE SHEET NO. 1 FOR SURVEY NOTES.





US Army Corps  
of Engineers

Jacksonville District

SAFETY ON THIS JOB  
DEPENDS ON YOU

DATE: 09/22/14  
DRAWN BY: DVT  
CHECKED BY: WRM  
DESIGNED BY: WRM  
IN CHARGE: WRM  
PROJECT NO.: 14-101  
JOB NO.: 14-101-304  
JOB NAME: PROJECT CONDITION SURVEY FY14  
JOB DESCRIPTION: STA. 19+00 CUT-3 THRU STA. 19+00 CUT-5  
PLAN

SCALE: AS SHOWN

DRAWING NO. 4

SHEET 04 OF 06

DEPARTMENT OF THE ARMY  
JACKSONVILLE DISTRICT, CORPS OF ENGINEERS  
JACKSONVILLE, FLORIDA

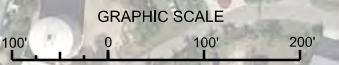
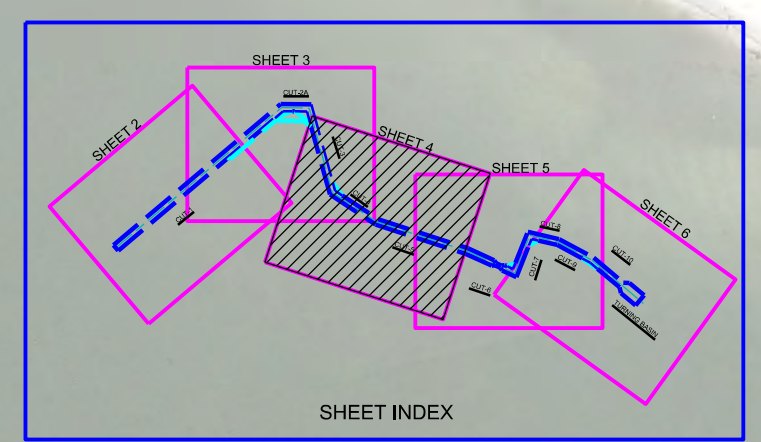
AIDS TO NAVIGATION	PLANE COORDINATES		LATITUDE	LONGITUDE
	X	Y		
DBN-13 (05/14)	667,967	772,965	26°27'44.43"	81°57'50.13"
LT-15 (05/14)	669,037	772,965	26°27'36.78"	81°57'38.36"

**MATCHLINE SHEET NO. 3 STA. 15+00**

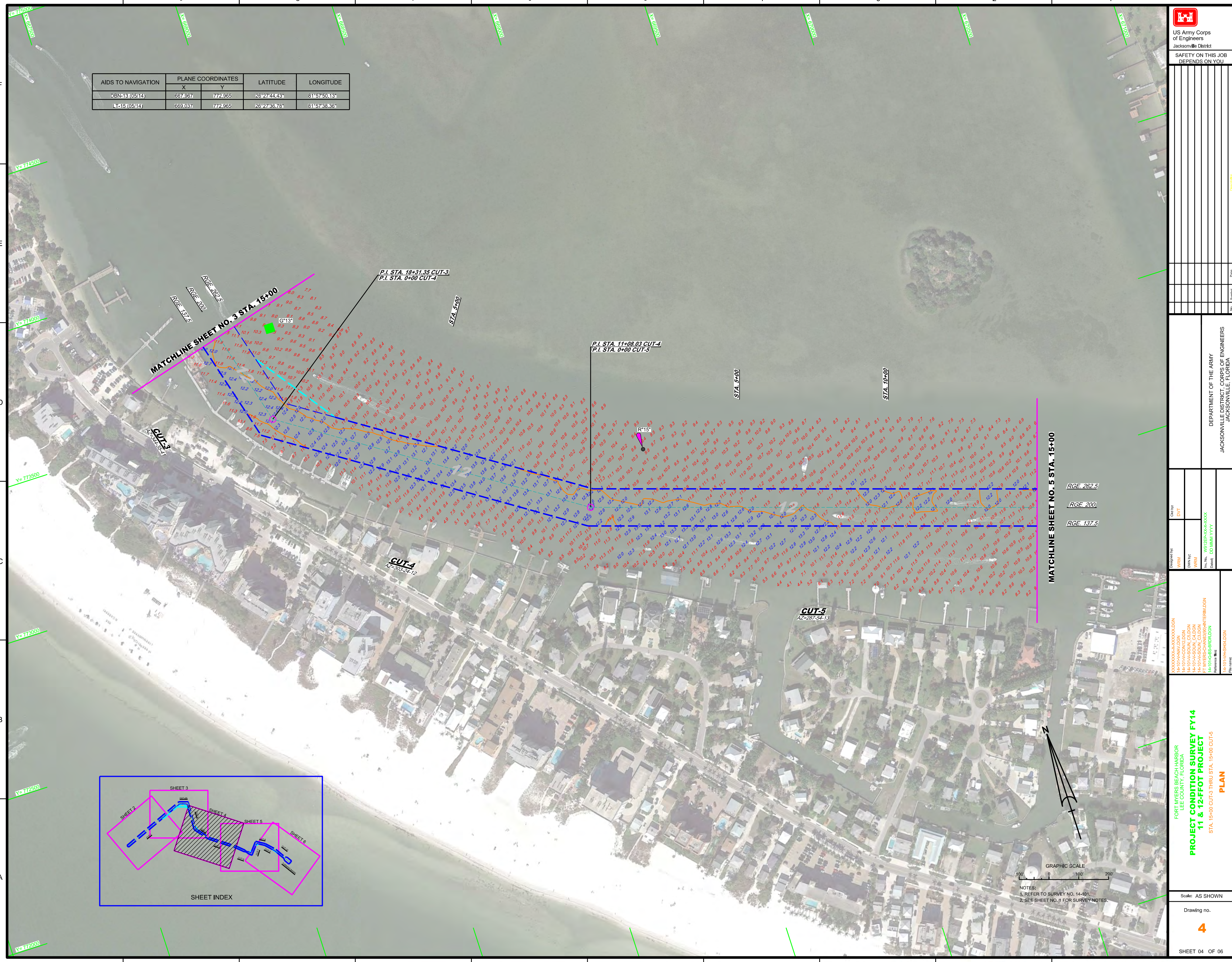
P.I. STA. 18+31.35 CUT-3  
P.I. STA. 0+00 CUT-4

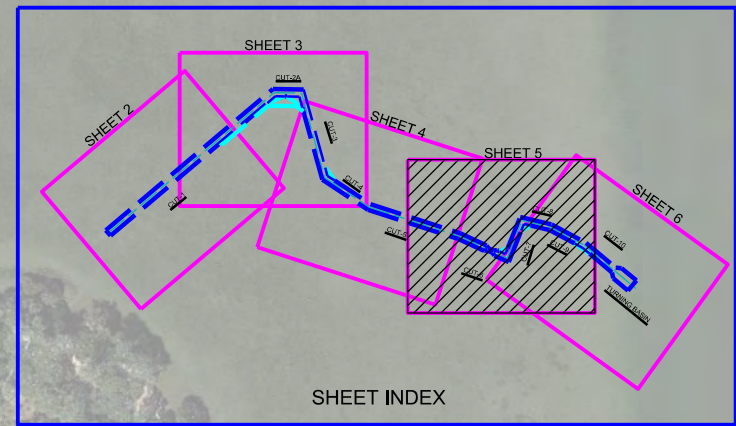
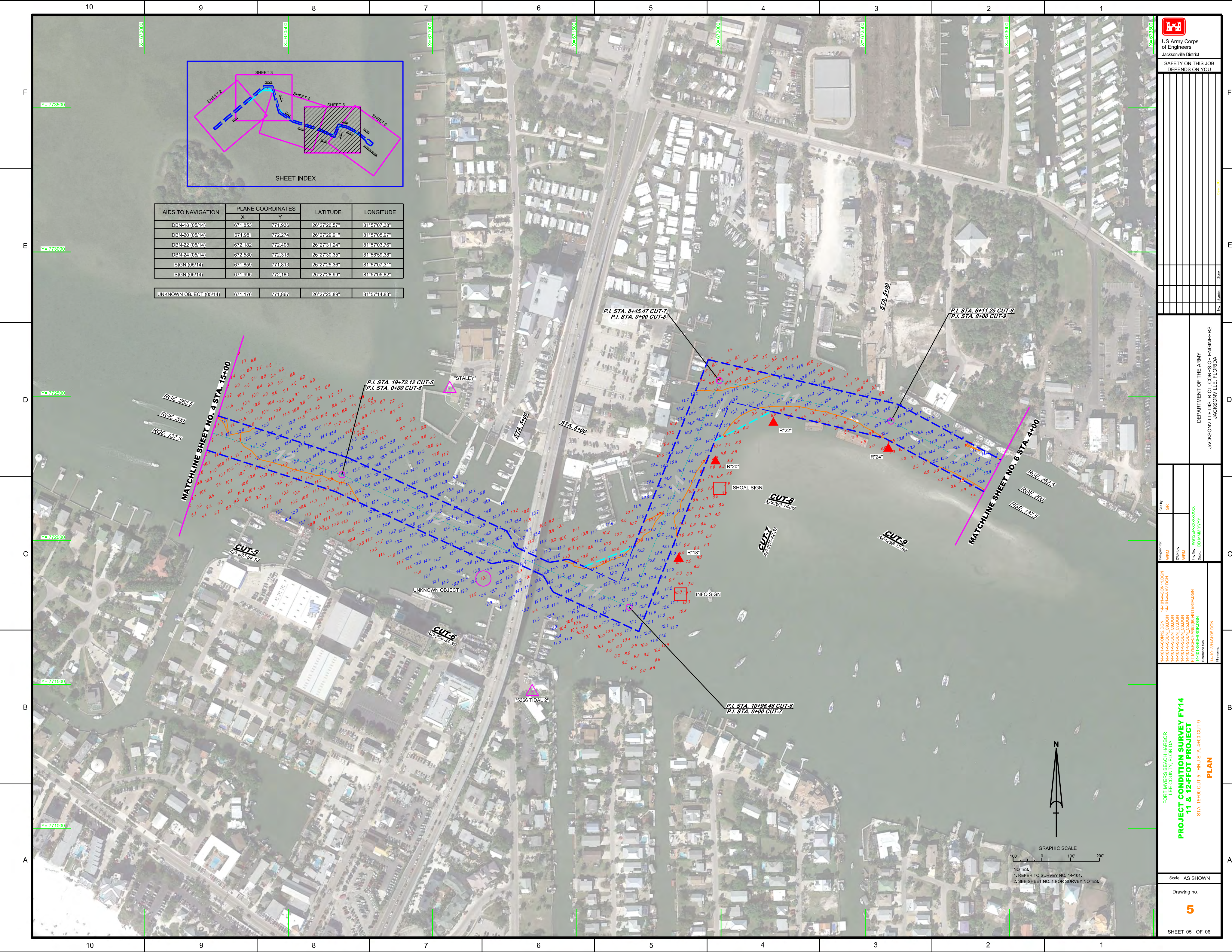
P.I. STA. 11+08.03 CUT-4  
P.I. STA. 0+00 CUT-5

**MATCHLINE SHEET NO. 5 STA. 15+00**




- NOTES:  
1. REFER TO SURVEY NO. 14-101.  
2. SEE SHEET NO. 1 FOR SURVEY NOTES.





AIDS TO NAVIGATION	PLANE COORDINATES		LATITUDE	LONGITUDE
	X	Y		
DBN-18 (05/14)	674.853	771.936	28°27'26.57"	81°57'07.38"
DBN-20 (05/14)	674.981	772.214	28°27'29.91"	81°57'05.97"
DBN-22 (05/14)	672.182	772.408	28°27'31.24"	81°57'03.76"
DBN-24 (05/14)	672.690	772.318	28°27'30.35"	81°56'59.38"
SIGN (05/14)	674.859	774.813	28°27'25.36"	81°57'07.31"
SIGN (05/14)	674.995	772.180	28°27'28.99"	81°57'05.82"
UNKNOWN OBJECT (05/14)	674.176	774.867	28°27'25.89"	81°57'14.83"

UNKNOWN OBJECT (05/14)	674.176	774.867	28°27'25.89"	81°57'14.83"
------------------------	---------	---------	--------------	--------------


**US Army Corps of Engineers**  
 Jacksonville District  
 SAFETY ON THIS JOB  
 DEPENDS ON YOU

Drawn by: GR	Checked by: GR
Designed by: GR	Reviewed by: GR
Field No.: WSP25P-0000000	Project No.: 14-101-0001
Client: US Army Corps of Engineers	Contract: DDMMWYVY

DEPARTMENT OF THE ARMY  
 JACKSONVILLE DISTRICT, CORPS OF ENGINEERS  
 JACKSONVILLE, FLORIDA

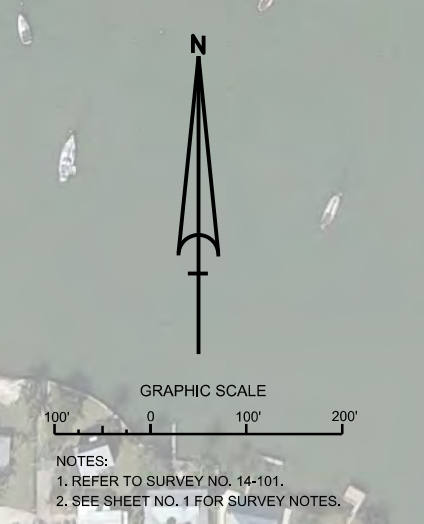
MATCHLINE SHEET NO. 4 STA. 15+00  
 RGE 200  
 RGE 137.5

MATCHLINE SHEET NO. 6 STA. 4+00  
 RGE 200  
 RGE 137.5

14-101-0001.DGN	14-101-0001.DGN
14-101-0001_CAD.DGN	14-101-0001_CAD.DGN
14-101-0001_C7.DGN	14-101-0001_C7.DGN
14-101-0001_C8.DGN	14-101-0001_C8.DGN
14-101-0001_C9.DGN	14-101-0001_C9.DGN
14-101-0001_C10.DGN	14-101-0001_C10.DGN
14-101-0001_C11.DGN	14-101-0001_C11.DGN
14-101-0001_C12.DGN	14-101-0001_C12.DGN
14-101-0001_C13.DGN	14-101-0001_C13.DGN
14-101-0001_C14.DGN	14-101-0001_C14.DGN
14-101-0001_C15.DGN	14-101-0001_C15.DGN


FORT MYERS BEACH HARBOR  
 LEE COUNTY, FLORIDA  
**PROJECT CONDITION SURVEY FY14**  
**11 & 12-FOOT PROJECT**  
 STA. 15+00 CUT-5 THRU STA. 4+00 CUT-9  
**PLAN**

Scale: AS SHOWN  
 Drawing No. **5**  
 SHEET 05 OF 06





AIDS TO NAVIGATION	PLANE COORDINATES		LATITUDE	LONGITUDE
	X	Y		
DBN-9 (05/14)	674.120	774.156	26°27'18.83"	81°56'42.44"
DBN-26 (05/14)	673.875	774.990	26°27'27.10"	81°56'52.84"
SIGN (05/14)	674.601	774.170	26°27'18.97"	81°56'37.15"
SIGN (05/14)	673.815	774.296	26°27'20.22"	81°56'45.80"

  
 US Army Corps  
 of Engineers  
 Jacksonville District  
 SAFETY ON THIS JOB  
 DEPENDS ON YOU

DEPARTMENT OF THE ARMY  
 JACKSONVILLE DISTRICT, CORPS OF ENGINEERS  
 JACKSONVILLE, FLORIDA

Designed By: **WRM**  
 Drawn By: **WRM**  
 Check By: **DVT**  
 File No: **KR235-05-000-0000**  
 Project: **DDMMWVYVY**

PROJECT CONDITION SURVEY FY14  
 11 & 12-FFOT PROJECT  
 STA. 4+00 CUT-9 THRU STA 9+00 TURNING BASIN  
 PLAN

Scale: AS SHOWN  
 Drawing no. **6**  
 SHEET 06 OF 06



- NOTES:  
 1. REFER TO SURVEY NO. 14-01.  
 2. SEE SHEET NO. 1 FOR SURVEY NOTES.

