

Public Meeting

Blind Pass Inlet Management Study

April 27, 2018

1:30 PM, Sea Pearl Room
South Seas Island Resort



AGENDA

- **2nd Public Meeting Recap**
- **Study Findings**
- **Comments & Questions**

LAST MEETING...

- **2nd Public Meeting**
- **Preliminary alternatives testing & results**
- **Beneficial features identified**
- **Next steps identified**
 - ✓ **Combine alternatives/management strategies**
 - ✓ **Coordination with Technical Advisory Committee**
 - **Study report & recommendation of management option(s)**

DESIGN FEATURES ANALYSIS

Truncated Template

Benefits
natural sand
bypassing.

Sand Placement

Benefits the
north end of
Sanibel
Island.

Connections to Pine Island Sound

Increases
the inlet
channel
stability.

Sanibel Structure

No benefit
to channel
stability.

DESIGN FEATURES ANALYSIS

Truncated Template

Benefits
natural sand
bypassing.

Sand Placement

Benefits the
north end of
Sanibel
Island.

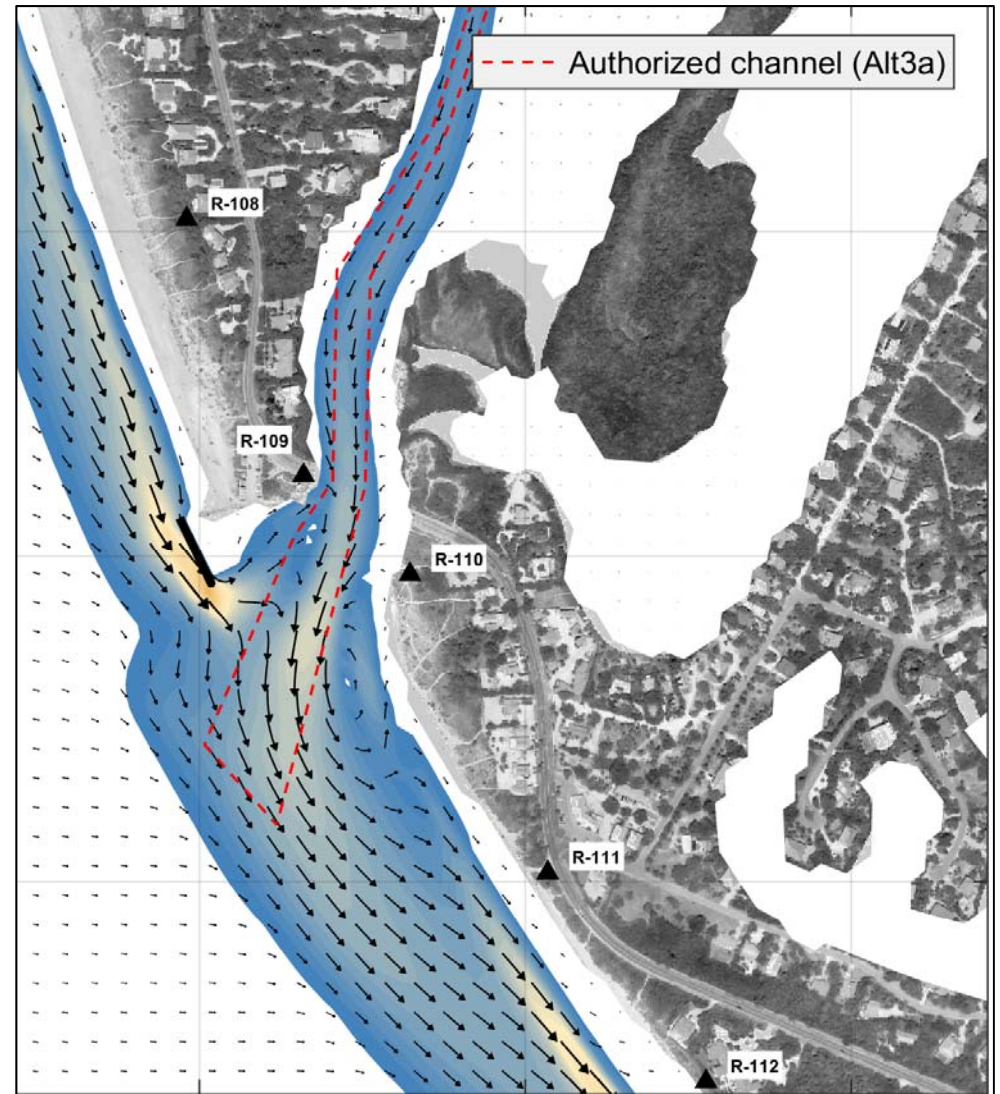
Connections to Pine Island Sound

Increases
the inlet
channel
stability.

Blind Pass Jetty Spur

Increases
the inlet
channel
stability.

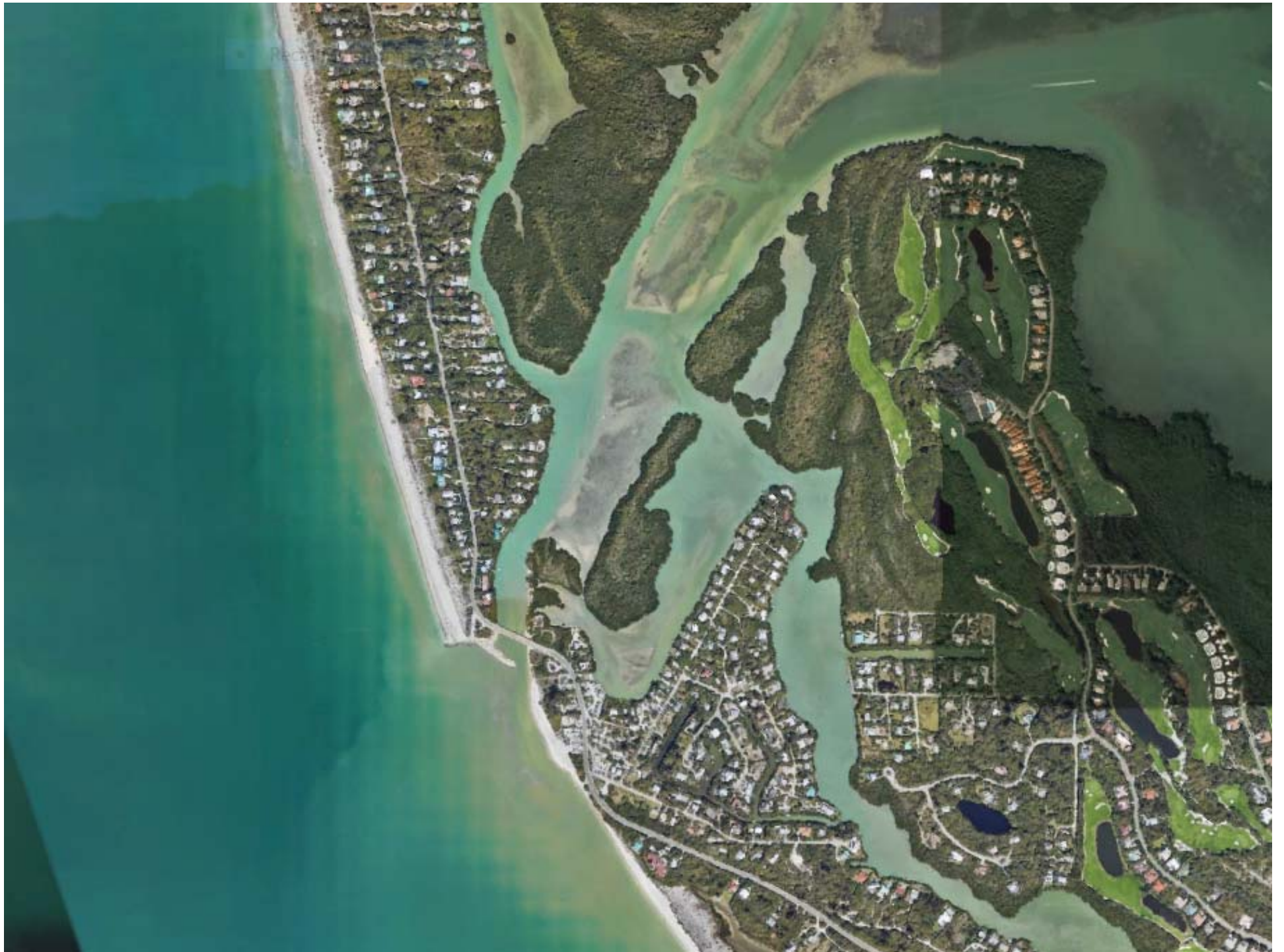
PERMITTED TEMPLATE / SPUR



COMBINED ALTERNATIVES

Features	ALT 1	ALT 2	ALT 3
Truncated template	✓	✓	✓
Connection to Pine Island Sound (Wulfert)	✓	✓	✓*
Sanibel beach fill	✓	✓	✓
Connection to Pine Island Sound (Sunset Bay)		✓	✓*
Spur at Blind Pass jetty			✓

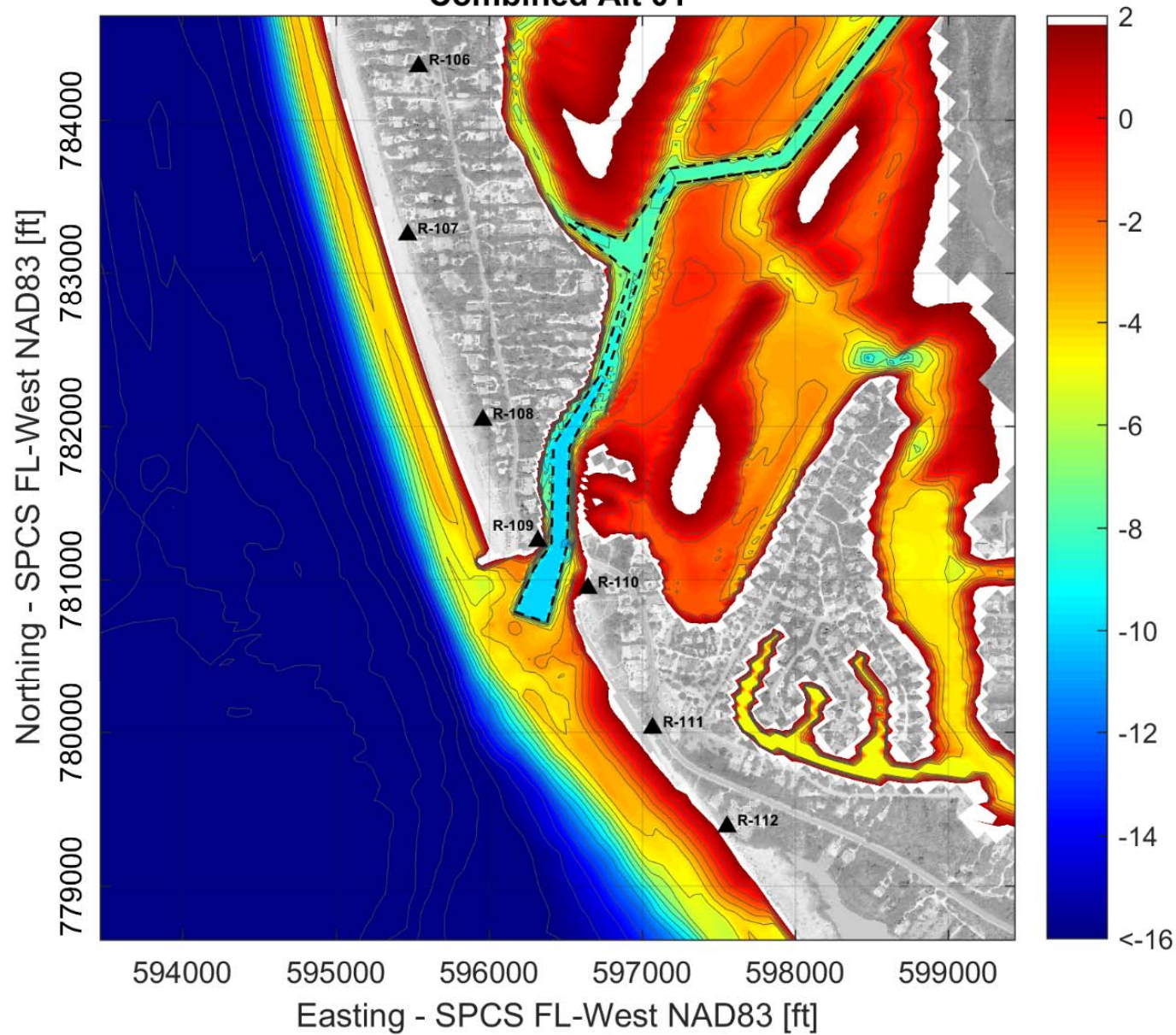
*Smaller connection than Alt 2. See graphics.



COMBINED ALTERNATIVE 1

Initial model bathymetry [ft NAVD]

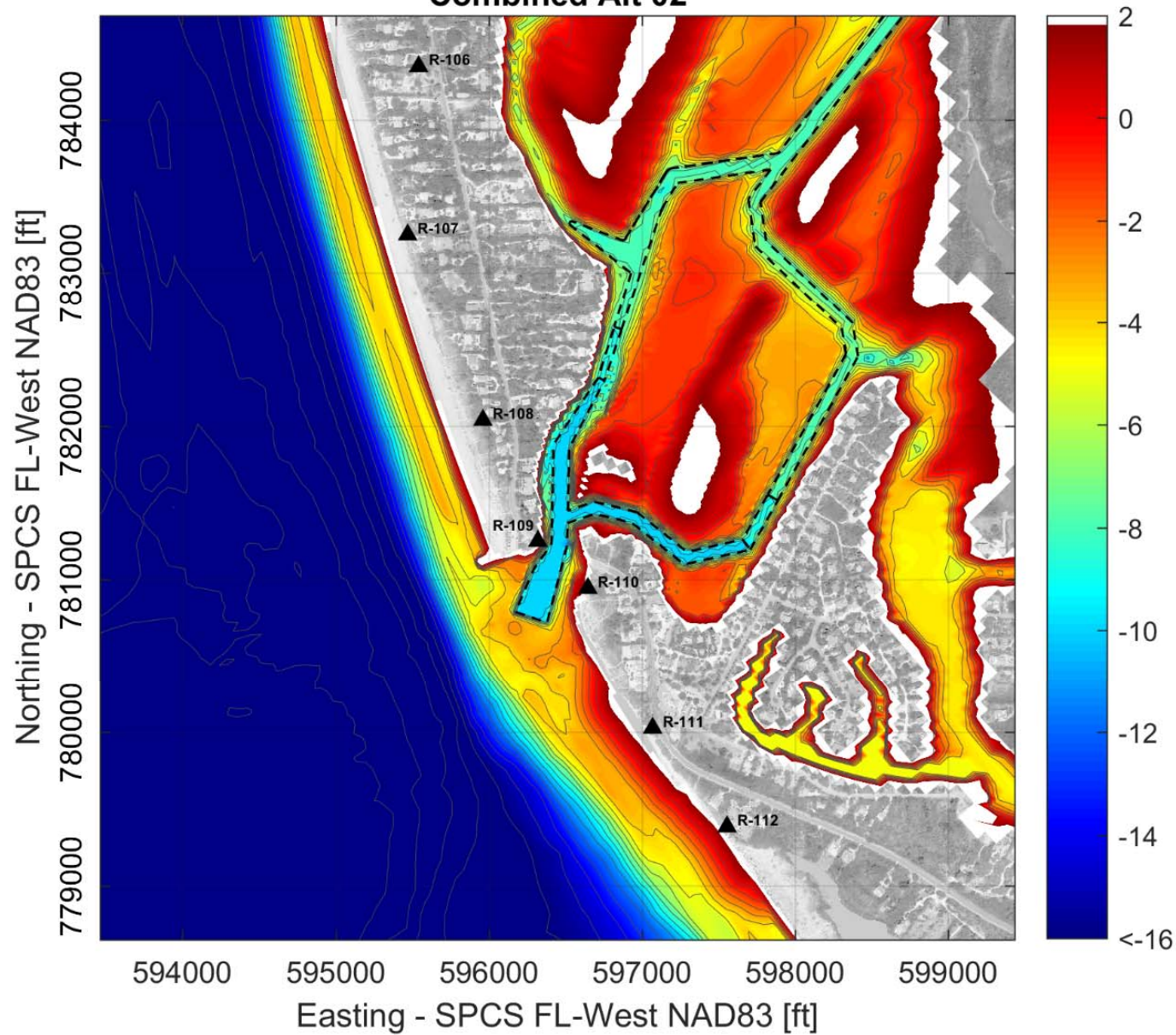
Combined Alt 01



COMBINED ALTERNATIVE 2

Initial model bathymetry [ft NAVD]

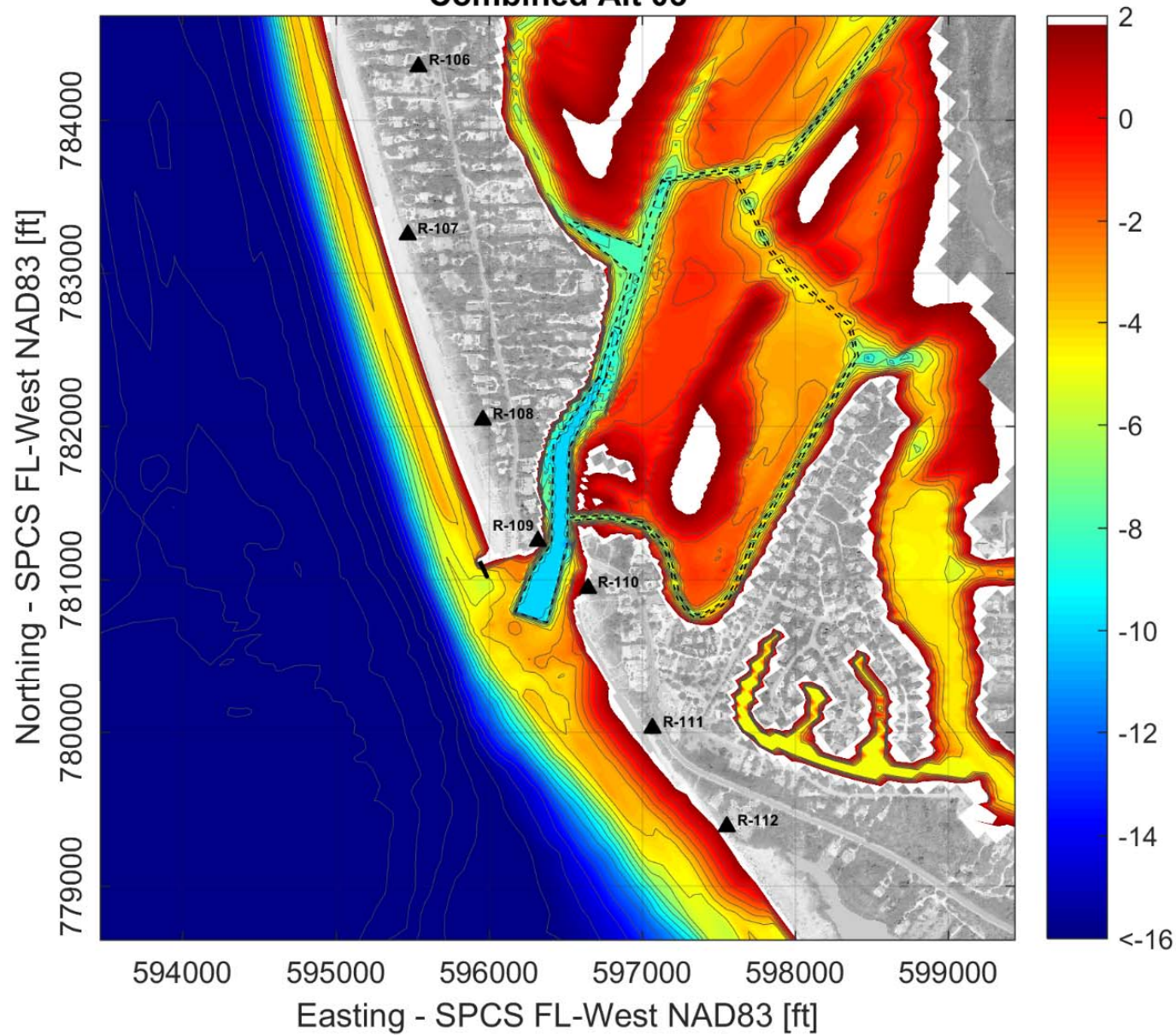
Combined Alt 02



COMBINED ALTERNATIVE 3

Initial model bathymetry [ft NAVD]

Combined Alt 03



RESULTS

ALTERNATIVES COMPARISON

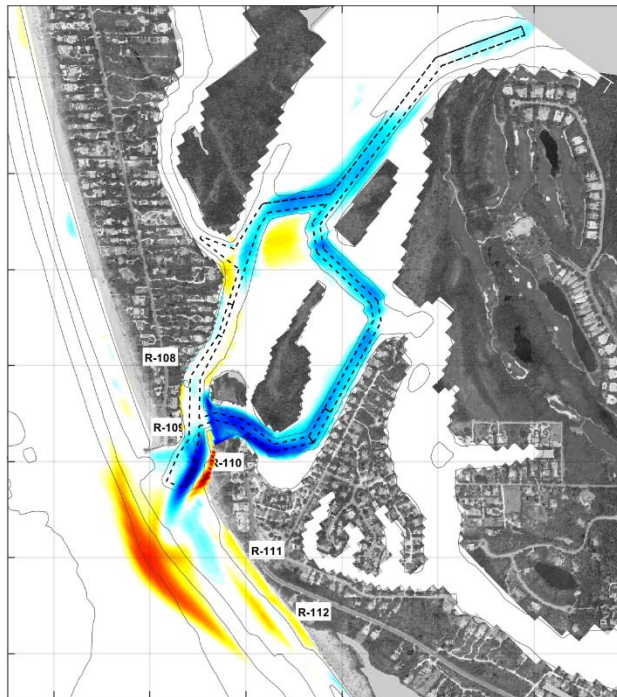
Warm = Shallower than Permitted Template

Cool = Deeper than Permitted Template

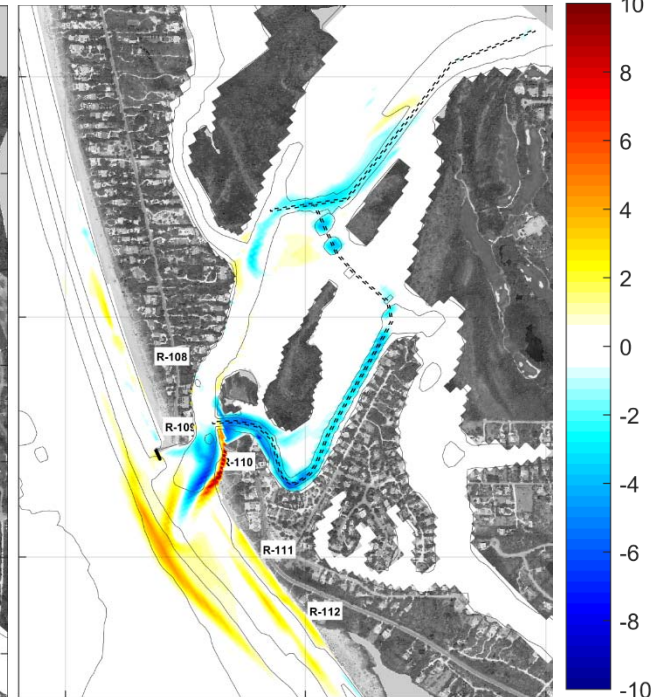
ALTERNATIVE 1



ALTERNATIVE 2



ALTERNATIVE 3



	ALT 1	ALT 2	ALT 3
Truncated template	✓	✓	✓
Connection to Pine Island Sound (Wulfert)	✓	✓	✓ *
Sanibel beach fill	✓	✓	✓
Connection to Pine Island Sound (Sunset Bay)		✓	✓ *
Spur at Blind Pass jetty			✓

*Smaller connection than Alt 2

FINDINGS MATRIX

Legend

Similar	Positive	Negative
o	+	-

Location	ALT 1	ALT 2	ALT 3
Captiva Island (South end)	o	o	o
Channel	o	+ +	+
Interior shoreline (NE of bridge)	o	- -	-
Sanibel Island (North of R-112)	+	+ + +	+ +
Sanibel Island (R-113)	-	- -	-

Note: The findings matrix is a condensed form of the results relative to current plan for qualitative discussion purposes.

Public Meeting

Blind Pass Inlet Management Study

April 27, 2018

1:30 PM, Sea Pearl Room
South Seas Island Resort

