

EXHIBIT "A"
PROJECT PLAN

PROJECT DESCRIPTION

The PROJECT is a cooperative funding project located within *Koreshan State Park* in Lee County. The PROJECT is consistent with the park’s unit management plan and maintenance plan for the Boat Launch Improvement.

The Existing launch is in poor condition and requires complete redevelopment. Currently, park visitors with paddle craft and power vessels must share the same launch. This is not efficient, as the launch was not designed with multiple uses in mind and causes a long wait time for the visitors. The new launch would replace the existing launch, improving upon the current design and add a separate area for paddle craft to access the river that would be ADA accessible, allowing for safer interactions between paddle craft and power vessels.

MEASURABLE BENEFIT

The redevelopment of boat launch and the addition of ADA kayak launch.

PROJECT TASKS

Key tasks to be performed by the DEP:

1. *ADA Kayak & Boat Launch Improvement* – Request for bids will be conducted by the DEP for the scope of work to include replacing the existing boat launch with an ADA Kayak & boat launch. Bids will be reviewed with the Department of Environmental Protection Bureau of Design and Construction (BDC) prior to proceeding with the PROJECT.
2. *Construction of Launch* – *Once the bid has been awarded, BDC will oversee the construction phase and assure all construction deliverables are met.*
3. *Vendor Payment* – BDC will also make all payments to vendor as construction deliverables are met throughout the construction phase of project until complete.

DELIVERABLES

- TBD by BDC once scope of work is completed.

PROJECT SCHEDULE

DESCRIPTION	COMMENCE	COMPLETE
Develop Scope of Work for launch contractor bids	TBD	TBD

Request for bids and selection of contractor for ADA kayak & boat launch	TBD	TBD
Replace launch	TBD	TBD
Final Inspection	TBD	TBD

Additional task deadlines contained in the performance schedules will be incorporated herein by reference.

PROJECT BUDGET

DESCRIPTION	DEP	COUNTY	TOTAL
ADA Kayak & Boat Launch	\$0	\$363,945.00	\$363,945.00
	\$0		
TOTAL	\$0	\$363,945.00	\$363,945.00

Reimbursement for expenditures of contingency funds is contingent upon **COUNTY** approval in accordance with the Funding Paragraph in the Agreement. The **DEP** must provide justification for the expenditure that will require documentation including, but not limited to, the purpose and necessity of the expenditure, the reason the expenditure was not included in the consultant or contractor agreement with the **DEP** expenditure cost comparisons and justification of the cost.

24 - Koreshan State Park - ADA Kayak & Boat Launch Improvement

Beach & Shoreline Funding Request 2021-22

Koreshan State Park

Zachary Lozano
3800 Corkscrew Rd
Estero, Florida 33928

O: 239-253-1673

Zachary Lozano

3800 Corkscrew Rd
Estero, Florida 33928

zachary.lozano@floridadep.gov
O: 239-253-1673

Application Form

Project Name

Project Name*

Name of Project

24 - Koreshan State Park - ADA Kayak & Boat Launch Improvement

Project Summary

Project Summary*

One or two sentence summary of the request.

Existing launch is in poor condition and requires complete redevelopment. Currently, park visitors with paddle craft and power vessels must share the same launch. This is not efficient, as the launch was not designed with multiple uses in mind and causes a long wait time for the visitors. The new launch would replace the existing launch, improving upon the current design and add a separate area for paddle craft to access the river that would be ADA accessible, allowing for safer interactions between paddle craft and power vessels.

FY 21-22 Funding Request*

Enter amount requested.

\$363,944.63

Project Type*

Capital

If Other

Please describe how the project is eligible based on FS Statute 125.0104

Project Priority*

Agencies with more than one request must prioritize their requests.

#1

Funding Request

If this project is a maintenance request or capital request that will be phased over more than one fiscal year, identify the anticipated future request(s) for TDC funding by fiscal year below:

Please note: Future funding is subject to TDC/BOCC approval in the appropriate cycle.

FY 22-23

FY 23-24

Previous TDC Funding*

If this project has received previous TDC funding, list the fiscal year(s) and amount allocated. If not applicable, please write N/A.

FY 18-19

Lee County Project #400959

\$25,000.00

This was the design and permit phase of the project. The funds being requested for FY 21-22 are for the construction phase of the project.

Other Funding Sources

Other Funds*

If other sources of funding are being requested for the construction and/or maintenance of this project, please indicate.

No

Has other funding already been approved?

If yes, list the source(s) and approved amount(s)

If no,

If other funding has been applied for, but not yet approved, list the amount you have requested, the agency you requested funding from and the anticipated approval date:

Request Narrative

Project Description*

Briefly describe your project.

The Estero River runs through the heart of a hidden Southwest Florida learning destination, Koreshan State Park. The river and the Koreshan Unity Settlement are the focal points of many park interpretive programs. These programs are conducted by park staff, Friends of Koreshan State Park members and even groups like Paddle Florida use the park as an access point for programs. The existing launch has acted as a center point for learning in SWFL, but its age and continued popularity has made it ill-equipped to provide the level of access to learning features that the ever-increasing population and diversity of the area demands. The proposed project is for the construction of redesigned launch that would be ADA accessible and include a separate launch exclusive to paddle craft. This redevelopment would greatly improve the overall tourist experience while enhancing the learning opportunities at the park.

Overall Context

If this request is part of a larger project, describe the larger project and how this component is integrated

Relationship to Beach/Shoreline*

Include a detailed description of how this project relates to **the repair, protection or enhancement of the beach/shoreline**; if this is a shoreline protection project, attach your agency's shoreline protection plan.

This project is an enhancement to the only existing public access launch on the shoreline of the Estero River. The current launch is unstable and in poor condition, requiring a complete redevelopment. The new design stays within the footprint of the existing launch while increasing efficiency of space.

Impact on Tourism*

Elaborate on the benefits this project will have on the visitor experience and/or positive impact on the tourism economy.

Please note: You may also upload supporting documents below. If you have multiple documents combine into one file before uploading.

2019-2020 EIA Report FINAL and COVER MEMO .pdf

The Estero River launch at Koreshan State Park, the only public access launch on the Estero River, is a significant tourist destination and is an important access point for the Calusa Blueway Paddling Trail. The redevelopment of this launch will not only improve accessibility and safety but increase opportunity for programming. In fiscal year 2019 - 2020, Koreshan State Park had 107,143 visitors with a direct economic impact of \$9,967,703. In the calendar year of 2019, the park hosted 720 learning programs with the Estero River and the Koreshan Unity Settlement being the main platforms.

Park Brochure.pdf

Project Design/Timeline*

Include estimates for design, permitting and construction as well as project timeline.

Please note: You may also upload supporting documents below. If you have multiple documents combine into one file before uploading.

Koreshan State Park Cost Estimate.pdf

The proposed project is for the construction phase which has an estimated complete cost of \$363,945.00. The design and permitting phase of this project was funded by Lee County TDC in FY 18-19 for \$25,000.00. This phase of the project was completed in April of 2020. If funded, the construction phase of this project is estimated to be completed during FY 21/22.

100% Sealed Plans.pdf

Budget Information

Budget for the Project*

UPLOAD INSTRUCTIONS

1. Click on the link to download the budget form to your computer.
2. Save the worksheet to your computer.
3. All requestors are required to complete this budget form.
4. Upload in the file upload area below.

beach-shoreline-budget-form-Koreshan State Park.xls

Supporting Documentation for Budget Narrative

For Maintenance projects that fund more than one facility, please include a budget breakdown by facility.

Budget Detail Form and/or Budget Narrative

Note: Maintenance projects are required to provide detail on each budget line by using the Detail Budget Breakdown form.

1. Click on the link to download the Detail Budget Breakdown to your computer.
2. Complete the worksheet by listing anticipated expenses in each category.
3. Save the worksheet to your computer.
4. Upload in the file upload area below.

Note: Capital projects must provide the following Budget Narrative:

1. A description of who will operate and maintain the facility.
2. The anticipated first full year of operating and maintenance costs.
3. The funding source for these expenses.

The facility will be fully operated and maintain by the Florida Department of Environmental Protection, Division of Recreation & Parks. The funding source of all expenses after construction will be the responsibility of Koreshan State Park.

Maps

Location of site*

UPLOAD INSTRUCTIONS:

1. Click on the link to download the Lee County Map to your computer.
2. Print the map.
3. Circle the site location.
4. Scan and upload map.

Lee County Map - Location of Site.pdf

Site map

For Capital projects: Submit a site map indicating the project's location and relationship to the beach/shoreline.

Relation Map.pdf

Signature

Signature*

Enter your full name and title

Zachary Lozano, Park Manager

Confirmation*

By entering your signature information above and clicking "I Agree" below, you certify that the statements contained in this application are true and correct to the best of your knowledge and belief.

I Agree.

Application Deadline: Feb. 25

Click SAVE to retain in draft form for future editing - OR - Click Submit if request is complete.

File Attachment Summary

Applicant File Uploads

- 2019-2020 EIA Report FINAL and COVER MEMO .pdf
- Park Brochure.pdf
- Koreshan State Park Cost Estimate.pdf
- 100% Sealed Plans.pdf
- beach-shoreline-budget-form-Koreshan State Park.xls
- Lee County Map - Location of Site.pdf
- Relation Map.pdf



FLORIDA DEPARTMENT OF Environmental Protection

Marjory Stoneman Douglas Building
3900 Commonwealth Boulevard
Tallahassee, FL 32399

Ron DeSantis
Governor

Jeanette Nuñez
Lt. Governor

Noah Valenstein
Secretary

Memorandum

TO: INTERESTED PARTIES

FROM: Steven A. Cutshaw, Chief, Office of Park Planning

SUBJECT: Economic Impact Assessment – Florida State Park System

DATE: September 25, 2020

Attached is the 2020 Annual Economic Impact Assessment Report for the Florida State Park System.

The Division of Recreation and Parks has generated the annual report since 1994. Numerous models and software exist to assess economic impact. To assess the economic impact of state parks and greenways and trails on Florida's economy, the Division of Recreation and Parks uses information from the National Park Service and Visit Florida, as well as Division of Recreation and Parks' data on annual park expenditures and attendance. This report is an estimate of economic benefits in the local area around a park.

If you have questions concerning the data found in the attached report, please contact the Office of Park Planning at 850.245.3051.

SC/dpd
Attachment

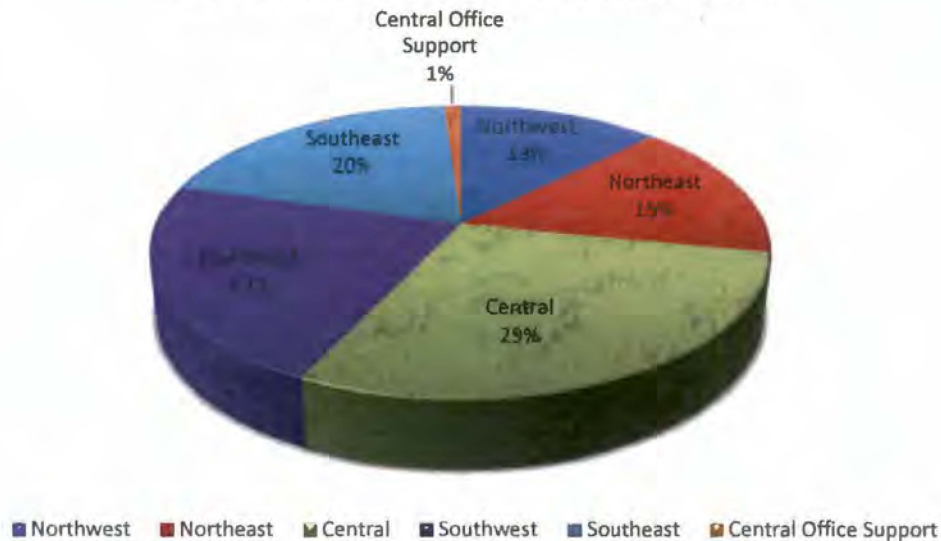
FISCAL YEAR 2019-2020 FLORIDA STATE PARK SYSTEM – ECONOMIC IMPACT ASSESSMENT

Summary of Data

Based on Fiscal Year (FY) 2019-2020 data, a total of 24,837,900 Florida residents and visitors enjoyed our award-winning system of state parks and trails. This year the estimated total economic impact of Florida State Parks is over \$2.2 Billion in direct economic impact, generating over \$150 Million in increased sales tax revenue. In addition, 31,810 jobs were supported by state park operations. The implication of this data is that for every 1,000 persons visiting a state park in Florida, the total direct impact on the local community is approximately \$91,479.

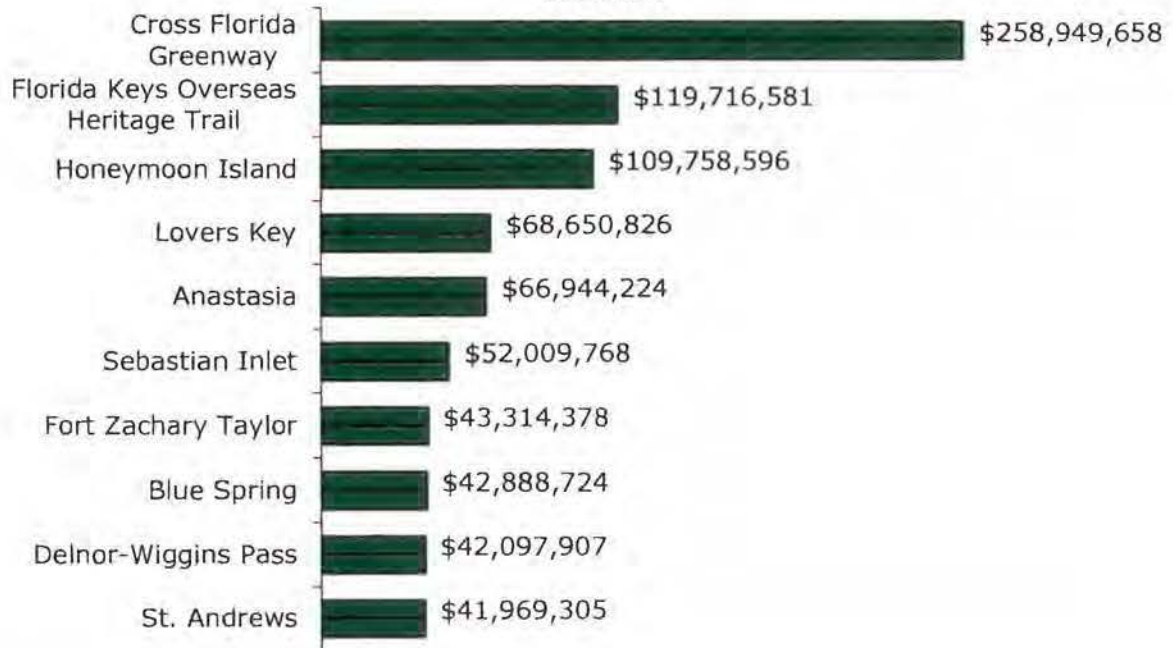
FY 2019-2020 DIRECT ECONOMIC IMPACT BY ADMINISTRATIVE UNIT				
ADMINISTRATIVE UNIT	TOTAL DIRECT IMPACT	INCREASED STATE SALES TAX	JOBS SUPPORTED	
CENTRAL	\$ 659,835,720	\$ 44,633,559	9,238	
CENTRAL OFFICE SUPPORT	\$ 23,907,507	\$	383	
NORTHEAST	\$ 351,356,220	\$ 23,466,021	4,919	
NORTHWEST	\$ 287,163,700	\$ 18,977,782	4,020	
SOUTHEAST	\$ 447,193,554	\$ 29,774,484	6,261	
SOUTHWEST	\$ 502,686,874	\$ 33,533,555	7,038	
STATEWIDE	\$ 2,272,143,576	\$ 150,385,401	31,810	

TOTAL DIRECT IMPACT BY ADMINISTRATIVE UNIT



FISCAL YEAR 2019-2020
FLORIDA STATE PARK SYSTEM – ECONOMIC IMPACT ASSESSMENT

PARKS AND TRAILS WITH GREATEST DIRECT ECONOMIC IMPACT



The ten units with the greatest direct economic impacts in the state are shown above. The economic impacts of these parks are due to many factors including: geographic location and available amenities.

FISCAL YEAR 2019-2020
FLORIDA STATE PARK SYSTEM – ECONOMIC IMPACT ASSESSMENT

Definition of Terms

1. Total Direct Economic Impact: The number of new dollars spent in a local economy by non-local park visitors and park operations.
2. Increased State Sales Tax: The estimated amount of tax dollars the state receives from park visitor expenditures.
3. Total Jobs Supported: This may be any combination of seasonal, temporary, part-time or full-time employment that adds up to 16 full-time jobs per one million dollars in total new expenditures in the local area. Source: [Thomas, C., Huber, C. & Koontz, L. 2012 National Park Visitor Spending Effects: Economic Contributions to Local Communities, States, and the Nation. Fort Collins, Colorado: U.S. Geological Survey & National Park Service]
4. Park Annual Attendance: The total attendance which occurred during the 12-month FY 2019-2020. Source: DEP Bureau of Operational Services.
5. Non-Local Visitor Percentage: The percentage of visitors to a state park unit that are not from the local area. "Impact" is a measure of new dollars introduced to a community.
6. Average Per-Person Per-Day Expenditure: For the purposes of this assessment, the average per-person, per-day expenditure is defined as "the average amount that residents and non-residents traveling by automobile will spend, per-person, per-day in Florida". The spending categories include transportation, food (grocery & restaurant), and lodging. State park-specific data on this factor is not available. The information on visitor expenditures for this assessment is based on the 2019-2020 annual data from VISIT FLORIDA.
7. FY 2019-2020 Expenditures: Total expenditures (salaries/benefits, operating expenses, and fixed capital expenditures) made by the park or administrative unit during the 12-month FY 2019-2020. Source: DEP Bureau of Finance and Accounting.

**STATE PARK SYSTEM DIRECT ECONOMIC IMPACT ASSESSMENT
FISCAL YEAR 2019-2020
STATEWIDE TOTAL**

DISTRICT	PARK ANNUAL ATTENDANCE	AVERAGE NON-LOCAL VISITOR PERCENT*	X	AVERAGE PER-PERSON/DAY EXPENDITURE**	=	VISITOR EXPENDITURES IN LOCAL AREA	+	FY 19/20 EXPENDITURES	=	TOTAL DIRECT ECONOMIC IMPACT	INCREASED STATE SALES TAX REVENUE ON VISITOR EXPENDITURES (7%)	TOTAL JOBS SUPPORTED ***
DISTRICT 1	3,134,284	0.74		\$ 116.89		\$ 271,111,178		\$ 16,052,522		\$ 287,163,700	\$ 18,977,782	4,020
DISTRICT 2	3,876,474	0.74		\$ 116.89		\$ 335,228,871		\$ 16,127,350		\$ 351,356,220	\$ 23,466,021	4,919
DISTRICT 3	7,371,475	0.74		\$ 116.89		\$ 637,622,267		\$ 22,213,453		\$ 659,835,720	\$ 44,633,559	9,238
DISTRICT 4	5,538,249	0.74		\$ 116.89		\$ 479,050,785		\$ 23,636,089		\$ 502,686,874	\$ 33,533,555	7,038
DISTRICT 5	4,917,418	0.74		\$ 116.89		\$ 425,349,773		\$ 21,843,781		\$ 447,193,554	\$ 29,774,484	6,261
CENTRAL OFFICE SUPPORT	0	0.74		\$ 116.89		\$		\$ 23,907,507		\$ 23,907,507	\$	383
STATEWIDE	24,837,900	0.74		\$ 116.89		\$ 2,148,362,874		\$ 123,780,702		\$ 2,272,143,576	\$ 150,385,401	31,810

*16 jobs per \$1 million in total expenditures in local area [Thomas, C., Huber, C. & Koontz, L. 2012 *National Park Visitor Spending Effects: Economic Contributions to Local Communities, States, and the Nation*. Fort Collins, Colorado: U.S. Geological Survey & National Park Service].

**STATE PARK SYSTEM DIRECT ECONOMIC IMPACT ASSESSMENT
FISCAL YEAR 2019-2020
DISTRICT 1**

PARK	PARK ANNUAL ATTENDANCE	AVERAGE NON-LOCAL VISITOR PERCENT*	AVERAGE PER-PERSON/DAY EXPENDITURE**	VISITOR EXPENDITURES IN LOCAL AREA	FY 19/20 EXPENDITURES	TOTAL DIRECT ECONOMIC IMPACT	INCREASED STATE SALES TAX REVENUE ON VISITOR EXPENDITURES (7%)	TOTAL JOBS SUPPORTED ***
Alfred B. MacIay Gardens	93,658	0.74	\$116.89	\$ 8,101,286	\$ 808,427	\$ 8,909,713	\$ 567,090	125
Bald Point	30,621	0.74	\$116.89	\$ 2,648,674	\$ 130,799	\$ 2,779,473	\$ 185,407	39
Big Lagoon	110,254	0.74	\$116.89	\$ 9,536,817	\$ 799,719	\$ 10,336,536	\$ 667,577	145
Blackwater Heritage Trail	218,287	0.74	\$116.89	\$ 18,881,520	\$ 89,594	\$ 18,971,114	\$ 1,321,706	266
Blackwater River	78,680	0.74	\$116.89	\$ 6,805,710	\$ 295,853	\$ 7,101,563	\$ 476,400	99
Camp Helen	32,773	0.74	\$116.89	\$ 2,834,819	\$ 298,891	\$ 3,133,710	\$ 198,437	44
Constitution Convention	698	0.74	\$116.89	\$ 60,376	\$ 52,374	\$ 112,750	\$ 4,226	2
Deer Lake	19,557	0.74	\$116.89	\$ 1,691,653	\$ 46,420	\$ 1,738,073	\$ 118,416	24
Dr. Julian G. Bruce St. George Island	166,541	0.74	\$116.89	\$ 14,405,563	\$ 740,318	\$ 15,145,881	\$ 1,008,389	212
Econfinn River	11,198	0.74	\$116.89	\$ 968,611	\$ 4,240	\$ 972,852	\$ 67,803	14
Eden Gardens	36,128	0.74	\$116.89	\$ 3,125,021	\$ 110,160	\$ 3,235,182	\$ 218,751	45
Edward Ball Wakulla Springs	154,457	0.74	\$116.89	\$ 13,360,314	\$ 1,518,772	\$ 14,879,086	\$ 935,222	208
Falling Waters	58,866	0.74	\$116.89	\$ 5,091,827	\$ 418,202	\$ 5,510,029	\$ 356,428	77
Florida Caverns	39,405	0.74	\$116.89	\$ 3,408,477	\$ 682,099	\$ 4,090,576	\$ 238,593	57
Fred Gannon Rocky Bayou	83,636	0.74	\$116.89	\$ 7,234,397	\$ 324,569	\$ 7,558,966	\$ 506,408	106
Grayton Beach	186,686	0.74	\$116.89	\$ 16,148,078	\$ 924,030	\$ 17,072,108	\$ 1,130,365	239
Henderson Beach	385,841	0.74	\$116.89	\$ 33,374,706	\$ 692,615	\$ 34,067,321	\$ 2,336,229	477
John Gorrie Museum	2,711	0.74	\$116.89	\$ 234,498	\$ 34,866	\$ 269,364	\$ 16,415	4
Lake Jackson Mounds	20,627	0.74	\$116.89	\$ 1,784,207	\$ 237,840	\$ 2,022,047	\$ 124,894	28
Lake Talquin (Includes Yellow River Bluff)	8,821	0.74	\$116.89	\$ 763,004	\$ 186,355	\$ 949,359	\$ 53,410	13
Letchworth-Love Mounds	5,969	0.74	\$116.89	\$ 516,310	\$ 57,615	\$ 573,926	\$ 36,142	8
Natural Bridge Battlefield	4,441	0.74	\$116.89	\$ 384,140	\$ 57,552	\$ 441,693	\$ 26,890	6
Ochlockonee River	31,578	0.74	\$116.89	\$ 2,731,453	\$ 314,660	\$ 3,046,113	\$ 191,202	43
Orman House	3,199	0.74	\$116.89	\$ 276,709	\$ 37,339	\$ 314,048	\$ 19,370	4
Perdido Key	198,276	0.74	\$116.89	\$ 17,150,596	\$ 40,610	\$ 17,191,206	\$ 1,200,542	241
Ponce de Leon Springs	78,277	0.74	\$116.89	\$ 6,770,851	\$ 140,644	\$ 6,911,495	\$ 473,960	97
San Marcos de Apalache	10,212	0.74	\$116.89	\$ 883,324	\$ 125,449	\$ 1,008,772	\$ 61,833	14
St. Andrews	472,087	0.74	\$116.89	\$ 40,834,865	\$ 1,134,441	\$ 41,969,305	\$ 2,858,441	588
St. Marks River Preserve	-	0.74	\$116.89	\$ -	\$ -	\$ -	\$ -	0
T.H. Stone Memorial St. Joseph	88,025	0.74	\$116.89	\$ 7,614,039	\$ 956,833	\$ 8,570,873	\$ 532,983	120
Tallahassee-St. Marks Historic Railroad	179,326	0.74	\$116.89	\$ 15,511,448	\$ 384,165	\$ 15,895,613	\$ 1,085,801	223
Tarkiln Bayou	40,932	0.74	\$116.89	\$ 3,540,561	\$ 4,886	\$ 3,545,446	\$ 247,839	50
Three Rivers	30,637	0.74	\$116.89	\$ 2,650,058	\$ 265,948	\$ 2,916,005	\$ 185,504	41
Topsail Hill	213,693	0.74	\$116.89	\$ 18,484,145	\$ 1,049,536	\$ 19,533,681	\$ 1,293,890	273
Torreya	31,662	0.74	\$116.89	\$ 2,738,719	\$ 479,732	\$ 3,218,451	\$ 191,710	45
Yellow River Marsh	6,525	0.74	\$116.89	\$ 564,403	\$ 14,204	\$ 578,608	\$ 39,508	8
District 1 Administration					\$ 2,592,765	\$ 2,592,765		36
DISTRICT 1 TOTAL	3,134,284			\$ 271,111,178	\$ 16,052,522	\$ 287,163,700	18,977,782	4,020

*Non-local ratio average derived from the 2006 Florida State Park Visitor Study.

**Per person per day visitor expenditure data is provided by Visit Florida.

***16 jobs per \$1 million in total expenditures in local area [Thomas, C., Huber, C. & Koontz, L. 2012 *National Park Visitor Spending Effects: Economic Contributions to Local Communities, States, and the Nation*. Fort Collins, Colorado: U.S. Geological Survey & National Park Service].

**STATE PARK SYSTEM DIRECT ECONOMIC IMPACT ASSESSMENT
FISCAL YEAR 2019-2020
DISTRICT 2**

PARK	PARK ANNUAL ATTENDANCE	X	AVERAGE NON-LOCAL VISITOR		AVERAGE PER-PERSON/DAY EXPENDITURE**	=	VISITOR EXPENDITURES		FY 19/20 EXPENDITURES	=	TOTAL DIRECT ECONOMIC IMPACT	INCREASED STATE SALES TAX REVENUE ON VISITOR EXPENDITURES (7%)	TOTAL JOBS SUPPORTED ***
			PERCENT*	X			IN LOCAL AREA	+					
Amelia Island	92,966		0.74		\$ 116.89	=	\$ 8,041,429	+	\$ 102,075	=	\$ 8,143,504	\$ 562,900	114
Big Shoals	11,722		0.74		\$ 116.89	=	\$ 1,013,937	+	\$ 122,408	=	\$ 1,136,344	\$ 70,976	16
Big Talbot Island	353,010		0.74		\$ 116.89	=	\$ 30,534,871	+	\$ 46,318	=	\$ 30,581,189	\$ 2,137,441	428
Cedar Key Museum	5,596		0.74		\$ 116.89	=	\$ 484,046	+	\$ 54,134	=	\$ 538,181	\$ 33,883	8
Cedar Key Scrub	10,940		0.74		\$ 116.89	=	\$ 946,295	+	\$ -	=	\$ 946,295	\$ 66,241	13
Crystal River Archaeological	58,427		0.74		\$ 116.89	=	\$ 5,053,854	+	\$ 209,689	=	\$ 5,263,543	\$ 353,770	74
Crystal River Preserve	133,789		0.74		\$ 116.89	=	\$ 11,572,561	+	\$ 307,787	=	\$ 11,880,348	\$ 810,079	166
Devil's Millhopper	53,686		0.74		\$ 116.89	=	\$ 4,643,764	+	\$ 132,003	=	\$ 4,775,767	\$ 325,063	67
Dudley Farm	15,552		0.74		\$ 116.89	=	\$ 1,345,226	+	\$ 161,997	=	\$ 1,507,224	\$ 94,166	21
Ellie Schiller Homosassa Springs	228,004		0.74		\$ 116.89	=	\$ 19,722,027	+	\$ 1,715,381	=	\$ 21,437,408	\$ 1,380,542	300
Fanning Springs	179,322		0.74		\$ 116.89	=	\$ 15,511,102	+	\$ 264,146	=	\$ 15,775,248	\$ 1,085,777	221
Forest Capital	2,589		0.74		\$ 116.89	=	\$ 223,945	+	\$ 78,182	=	\$ 302,127	\$ 15,676	4
Fort Clinch (Includes Fernandina Plaza)	244,272		0.74		\$ 116.89	=	\$ 21,129,186	+	\$ 888,738	=	\$ 22,017,924	\$ 1,479,043	308
Fort Cooper	68,883		0.74		\$ 116.89	=	\$ 5,958,283	+	\$ 218,575	=	\$ 6,176,858	\$ 417,080	86
Fort George Island	60,325		0.74		\$ 116.89	=	\$ 5,218,028	+	\$ 145,233	=	\$ 5,363,262	\$ 365,262	75
Gainesville to Hawthorne Trail	18,913		0.74		\$ 116.89	=	\$ 1,635,948	+	\$ -	=	\$ 1,635,948	\$ 114,516	23
George Crady Bridge Fishing Pier	252,620		0.74		\$ 116.89	=	\$ 21,851,276	+	\$ -	=	\$ 21,851,276	\$ 1,529,589	306
Gilchrist Blue Springs	97,736		0.74		\$ 116.89	=	\$ 8,454,027	+	\$ 324,584	=	\$ 8,778,611	\$ 591,782	123
Ichetucknee Springs	245,298		0.74		\$ 116.89	=	\$ 21,217,934	+	\$ 1,451,800	=	\$ 22,669,734	\$ 1,485,255	317
Ichetucknee Trace	-		0.74		\$ 116.89	=	\$ -	+	\$ -	=	\$ -	\$ -	0
Lafayette Blue Springs	15,280		0.74		\$ 116.89	=	\$ 1,321,699	+	\$ 325,332	=	\$ 1,647,030	\$ 92,519	23
Little Talbot Island	106,933		0.74		\$ 116.89	=	\$ 9,249,555	+	\$ 720,196	=	\$ 9,969,751	\$ 647,469	140
Madison Blue Spring	16,327		0.74		\$ 116.89	=	\$ 1,412,263	+	\$ 137,640	=	\$ 1,549,902	\$ 98,858	22
Manatee Springs (includes Anderson's Land	174,642		0.74		\$ 116.89	=	\$ 15,106,289	+	\$ 696,246	=	\$ 15,802,535	\$ 1,057,440	221
Marjorie Kinnan Rawlings	13,544		0.74		\$ 116.89	=	\$ 1,171,537	+	\$ 215,428	=	\$ 1,386,965	\$ 82,008	19
Mike Roess Gold Head Branch (excludes Sig	72,098		0.74		\$ 116.89	=	\$ 6,236,376	+	\$ 858,104	=	\$ 7,094,480	\$ 436,546	99
Nature & Heritage Tourism Center	-		0.74		\$ 116.89	=	\$ -	+	\$ -	=	\$ -	\$ -	0
Nature Coast Trail	115,697		0.74		\$ 116.89	=	\$ 10,007,629	+	\$ 119,695	=	\$ 10,127,324	\$ 700,534	142
O'Leno	77,755		0.74		\$ 116.89	=	\$ 6,725,699	+	\$ 378,039	=	\$ 7,103,738	\$ 470,799	99
Olustee Battlefield	23,888		0.74		\$ 116.89	=	\$ 2,066,279	+	\$ 75,354	=	\$ 2,141,633	\$ 144,639	30
Palatka-Lake Butler Trail	73,611		0.74		\$ 116.89	=	\$ 6,367,248	+	\$ 108,178	=	\$ 6,475,426	\$ 445,707	91
Paynes Prairie (Includes Price's Scrub)	144,363		0.74		\$ 116.89	=	\$ 12,487,197	+	\$ 903,867	=	\$ 13,391,064	\$ 874,104	187
Peacock Springs	13,896		0.74		\$ 116.89	=	\$ 1,201,985	+	\$ 73,278	=	\$ 1,275,262	\$ 84,139	18
Pumpkin Hill Creek	27,351		0.74		\$ 116.89	=	\$ 2,365,823	+	\$ 181,644	=	\$ 2,547,467	\$ 165,608	36
Rainbow Springs	249,959		0.74		\$ 116.89	=	\$ 21,621,104	+	\$ 842,977	=	\$ 22,464,081	\$ 1,513,477	314
River Rise	11,544		0.74		\$ 116.89	=	\$ 998,540	+	\$ -	=	\$ 998,540	\$ 69,898	14
San Felasco Hammock	42,441		0.74		\$ 116.89	=	\$ 3,671,087	+	\$ 134,492	=	\$ 3,805,579	\$ 256,976	53
Stephen Foster	58,536		0.74		\$ 116.89	=	\$ 5,063,282	+	\$ 1,096,895	=	\$ 6,160,177	\$ 354,430	86
Suwannee River	34,522		0.74		\$ 116.89	=	\$ 2,986,105	+	\$ 370,633	=	\$ 3,356,738	\$ 209,027	47
Suwannee River Wilderness Trail	3,257		0.74		\$ 116.89	=	\$ 281,726	+	\$ 89,291	=	\$ 371,017	\$ 19,721	5
Troy Spring	11,354		0.74		\$ 116.89	=	\$ 982,105	+	\$ 79,493	=	\$ 1,061,598	\$ 68,747	15
Waccasassa Bay	67,571		0.74		\$ 116.89	=	\$ 5,844,797	+	\$ 142,412	=	\$ 5,987,209	\$ 409,136	84
Withlacoochee Trail	344,503		0.74		\$ 116.89	=	\$ 29,799,027	+	\$ 137,294	=	\$ 29,936,321	\$ 2,085,932	419
Yellow Bluff Fort	527		0.74		\$ 116.89	=	\$ 45,585	+	\$ -	=	\$ 45,585	\$ 3,191	1
Yulee Sugar Mill Ruins	42,292		0.74		\$ 116.89	=	\$ 3,658,199	+	\$ -	=	\$ 3,658,199	\$ 256,074	51
District 2 Administration									\$ 2,217,810		\$ 2,217,810	\$ -	31
DISTRICT 2 TOTAL	3,875,541						\$ 335,228,871		\$ 16,127,350		\$ 351,356,220	\$ 23,466,021	4,919

*Non-local ratio average derived from the 2006 Florida State Park Visitor Study.

**Per person per day visitor expenditure data is provided by Visit Florida.

***16 full-time jobs per one million dollars in total new expenditures in the local area. Source: [Thomas, G., Huber, C. & Koortz, L. 2012 National Park Visitor Spending Effects: Economic Contributions to Local Communities, States, and the Nation. Fort Collins, Colorado: U.S. Geological Survey & National Park Service]

**STATE PARK SYSTEM DIRECT ECONOMIC IMPACT ASSESSMENT
FISCAL YEAR 2019-2020
DISTRICT 3**

PARK	PARK ANNUAL ATTENDANCE	X	AVERAGE NON-LOCAL VISITOR PERCENT*	X	AVERAGE PER-PERSON/DAY EXPENDITURE**	=	VISITOR EXPENDITURES IN LOCAL AREA	+	FY 19/20 EXPENDITURES	=	TOTAL DIRECT ECONOMIC IMPACT	INCREASED STATE SALES TAX REVENUE ON VISITOR EXPENDITURES (7%)	TOTAL JOBS SUPPORTED ***
A.D. Broussard Catfish Creek	3,458		0.74		\$ 116.89		\$ 299,112		\$ 64,676		\$ 363,788	\$ 20,938	5
Anastasia	750,872		0.74		\$ 116.89		\$ 64,949,377		\$ 1,994,847		\$ 66,944,224	\$ 4,546,456	937
Blue Spring	485,423		0.74		\$ 116.89		\$ 41,988,410		\$ 900,314		\$ 42,888,724	\$ 2,939,189	600
Bulow Creek	138,420		0.74		\$ 116.89		\$ 11,973,136		\$ -		\$ 11,973,136	\$ 838,120	168
Bulow Plantation Ruins	31,407		0.74		\$ 116.89		\$ 2,716,662		\$ 54,989		\$ 2,771,651	\$ 190,166	39
Colt Creek	45,747		0.74		\$ 116.89		\$ 3,957,051		\$ 383,516		\$ 4,340,567	\$ 276,994	61
Cross Florida Greenway	2,956,374		0.74		\$ 116.89		\$ 255,722,212		\$ 3,227,446		\$ 258,949,658	\$ 17,900,555	3,625
De Leon Springs	179,880		0.74		\$ 116.89		\$ 15,559,368		\$ 554,617		\$ 16,113,985	\$ 1,089,156	226
Dunns Creek	42,568		0.74		\$ 116.89		\$ 3,682,072		\$ 191,910		\$ 3,873,982	\$ 257,745	54
Faver-Dykes	30,338		0.74		\$ 116.89		\$ 2,624,195		\$ 589,138		\$ 3,213,333	\$ 183,694	45
Fort Mose	68,369		0.74		\$ 116.89		\$ 5,913,823		\$ 25,990		\$ 5,939,813	\$ 413,968	83
Gamble Rogers - Flagler Beach	136,902		0.74		\$ 116.89		\$ 11,841,831		\$ 1,291,457		\$ 13,133,288	\$ 828,928	184
Haw Creek	4,935		0.74		\$ 116.89		\$ 426,871		\$ -		\$ 426,871	\$ 29,881	6
Hontoon Island	30,815		0.74		\$ 116.89		\$ 2,665,454		\$ 245,621		\$ 2,911,075	\$ 186,582	41
Indian River Lagoon	-		0.74		\$ 116.89		\$ -		\$ -		\$ -	\$ -	0
Klissimnee Prairie	28,318		0.74		\$ 116.89		\$ 2,449,467		\$ 701,667		\$ 3,151,135	\$ 171,463	44
Lake Griffin	45,310		0.74		\$ 116.89		\$ 3,919,252		\$ 349,467		\$ 4,268,719	\$ 274,348	60
Lake Klissimnee	59,160		0.74		\$ 116.89		\$ 5,117,257		\$ 852,203		\$ 5,969,460	\$ 358,208	84
Lake Louisa	150,060		0.74		\$ 116.89		\$ 12,979,980		\$ 875,094		\$ 13,855,074	\$ 908,599	194
Lower Wekiva River	32,526		0.74		\$ 116.89		\$ 2,813,453		\$ -		\$ 2,813,453	\$ 196,942	39
North Peninsula	266,396		0.74		\$ 116.89		\$ 23,042,881		\$ -		\$ 23,042,881	\$ 1,613,002	323
Okeechobee Battlefield	3,557		0.74		\$ 116.89		\$ 307,676		\$ -		\$ 307,676	\$ 21,537	4
Palatka-St. Augustine Rail Trail	104,681		0.74		\$ 116.89		\$ 9,054,760		\$ 28,478		\$ 9,083,238	\$ 633,833	127
Ravine Gardens	178,030		0.74		\$ 116.89		\$ 15,399,346		\$ 758,641		\$ 16,157,987	\$ 1,077,954	226
Rock Springs Run	38,530		0.74		\$ 116.89		\$ 3,332,791		\$ 81,890		\$ 3,414,681	\$ 233,295	48
Sebastian Inlet	584,327		0.74		\$ 116.89		\$ 50,543,467		\$ 1,466,301		\$ 52,009,768	\$ 3,538,043	728
Silver Springs	308,741		0.74		\$ 116.89		\$ 26,705,664		\$ 1,439,396		\$ 28,145,061	\$ 1,869,396	394
St. Sebastian River	56,674		0.74		\$ 116.89		\$ 4,902,222		\$ 553,540		\$ 5,455,762	\$ 343,156	76
Tomoka (Includes Addison Blockhouse)	166,486		0.74		\$ 116.89		\$ 14,400,806		\$ 850,730		\$ 15,251,536	\$ 1,008,056	214
Van Fleet Trail	15,074		0.74		\$ 116.89		\$ 1,303,880		\$ 169,047		\$ 1,472,927	\$ 91,272	21
Washington Oaks	103,970		0.74		\$ 116.89		\$ 8,993,259		\$ 704,803		\$ 9,698,062	\$ 629,528	136
Wekiwa Springs	324,127		0.74		\$ 116.89		\$ 28,036,532		\$ 1,493,156		\$ 29,529,688	\$ 1,962,557	413
District 3 Administration									\$ 2,364,517		\$ 2,364,517		33
DISTRICT 3 TOTAL	7,371,475						\$ 637,622,267		\$ 22,213,453		\$ 659,835,720	44,633,559	9,238

*Non-local ratio average derived from the 2006 Florida State Park Visitor Study.

**Per person per day visitor expenditure data is provided by Visit Florida.

***16 jobs per \$1 million in total expenditures in local area [Thomas, C., Huber, C. & Koontz, L. 2012 *National Park Visitor Spending Effects: Economic Contributions to Local Communities, States, and the Nation*. Fort Collins, Colorado: U.S. Geological Survey & National Park Service].

In this report.

**STATE PARK SYSTEM DIRECT ECONOMIC IMPACT ASSESSMENT
FISCAL YEAR 2019-2020
DISTRICT 4**

PARK	PARK ANNUAL ATTENDANCE	AVERAGE NON-LOCAL VISITOR PERCENT*	AVERAGE PER-PERSON/DAY EXPENDITURE**	VISITOR EXPENDITURES IN LOCAL AREA	FY 19/20 EXPENDITURES	TOTAL DIRECT ECONOMIC IMPACT	INCREASED STATE SALES TAX REVENUE ON VISITOR EXPENDITURES (7%)	TOTAL JOBS SUPPORTED ***
	X	X	=	+	=	=		***
Alafia River	132,571	0.74	\$ 116.89	\$ 11,467,206	\$ 461,752	\$ 11,928,958	\$ 802,704	167
Anclote Key	155,785	0.74	\$ 116.89	\$ 13,475,184	\$ 75,111	\$ 13,550,295	\$ 943,263	190
Caladesi Island	161,930	0.74	\$ 116.89	\$ 14,006,718	\$ 335,545	\$ 14,342,264	\$ 980,470	201
Cayo Costa	121,835	0.74	\$ 116.89	\$ 10,538,557	\$ 451,257	\$ 10,989,814	\$ 737,699	154
Charlotte Harbor	242,504	0.74	\$ 116.89	\$ 20,976,256	\$ 444,338	\$ 21,420,594	\$ 1,468,338	300
Cockroach Bay	-	0.74	\$ 116.89	\$ -	\$ -	\$ -	\$ -	0
Collier-Seminole	64,304	0.74	\$ 116.89	\$ 5,562,206	\$ 1,666,536	\$ 7,228,742	\$ 389,354	101
Dade Battlefield	38,725	0.74	\$ 116.89	\$ 3,349,658	\$ 284,689	\$ 3,634,347	\$ 234,476	51
Delnor-Wiggins Pass	477,776	0.74	\$ 116.89	\$ 41,326,955	\$ 770,952	\$ 42,097,907	\$ 2,892,887	589
Don Pedro Island	75,407	0.74	\$ 116.89	\$ 6,522,600	\$ 99,092	\$ 6,621,692	\$ 456,582	93
Egmont Key	218,668	0.74	\$ 116.89	\$ 18,914,476	\$ 48,988	\$ 18,963,464	\$ 1,324,013	265
Estero Bay	22,654	0.74	\$ 116.89	\$ 1,959,539	\$ 116,558	\$ 2,076,097	\$ 137,168	29
Fakahatchee Strand	40,211	0.74	\$ 116.89	\$ 3,478,195	\$ 694,942	\$ 4,173,137	\$ 243,474	58
Gasparilla Island	256,660	0.74	\$ 116.89	\$ 22,200,731	\$ 389,123	\$ 22,589,854	\$ 1,554,051	316
Highlands Hammock	147,488	0.74	\$ 116.89	\$ 12,757,506	\$ 909,184	\$ 13,666,690	\$ 893,025	191
Hillsborough River	191,328	0.74	\$ 116.89	\$ 16,549,604	\$ 1,156,687	\$ 17,706,291	\$ 1,158,472	248
Honeymoon Island	1,252,866	0.74	\$ 116.89	\$ 108,371,155	\$ 1,387,441	\$ 109,758,596	\$ 7,585,981	1,537
J. P. Benjamin - Gamble Plantation	50,241	0.74	\$ 116.89	\$ 4,345,776	\$ 399,639	\$ 4,745,415	\$ 304,204	66
Koreshan	107,143	0.74	\$ 116.89	\$ 9,267,719	\$ 699,983	\$ 9,967,703	\$ 648,740	140
Lake June-in-Winter Scrub	7,567	0.74	\$ 116.89	\$ 654,535	\$ 67,436	\$ 721,971	\$ 45,817	10
Lake Manatee	54,612	0.74	\$ 116.89	\$ 4,723,862	\$ 400,303	\$ 5,124,165	\$ 330,670	72
Little Manatee River	53,500	0.74	\$ 116.89	\$ 4,627,675	\$ 730,661	\$ 5,358,336	\$ 323,937	75
Lovers Key	758,572	0.74	\$ 116.89	\$ 65,615,416	\$ 3,035,410	\$ 68,650,826	\$ 4,593,079	961
Madira Bickel Mound	381	0.74	\$ 116.89	\$ 32,956	\$ -	\$ 32,956	\$ 2,307	0
Mound Key	1,591	0.74	\$ 116.89	\$ 137,619	\$ -	\$ 137,619	\$ 9,633	2
Myakka River	301,852	0.74	\$ 116.89	\$ 26,109,775	\$ 2,282,643	\$ 28,392,418	\$ 1,827,684	397
Oscar Scherer	120,706	0.74	\$ 116.89	\$ 10,440,900	\$ 1,284,510	\$ 11,725,410	\$ 730,863	164
Paynes Creek	10,265	0.74	\$ 116.89	\$ 887,908	\$ 286,955	\$ 1,174,863	\$ 62,154	16
Skyway Fishing Pier	176,371	0.74	\$ 116.89	\$ 15,255,845	\$ -	\$ 15,255,845	\$ 1,067,909	214
South Fork (formerly Beker)	-	0.74	\$ 116.89	\$ -	\$ -	\$ -	\$ -	0
Stump Pass Beach	89,839	0.74	\$ 116.89	\$ 7,770,948	\$ 89,794	\$ 7,860,742	\$ 543,966	110
Terra Ceia	1,647	0.74	\$ 116.89	\$ 142,463	\$ 152,455	\$ 294,918	\$ 9,972	4
Weeki Wachee Springs	178,061	0.74	\$ 116.89	\$ 15,402,027	\$ 3,104,645	\$ 18,506,672	\$ 1,078,142	259
Werner-Boyce Salt Springs	15,383	0.74	\$ 116.89	\$ 1,330,608	\$ 317,134	\$ 1,647,742	\$ 93,143	23
Wingate Creek (formerly Beker)	46	0.74	\$ 116.89	\$ 3,979	\$ -	\$ 3,979	\$ 279	0
Ybor City	9,760	0.74	\$ 116.89	\$ 844,226	\$ 146,448	\$ 990,675	\$ 59,096	14
District 4 Administration					\$ 1,345,877	\$ 1,345,877	\$ -	19
DISTRICT 4 TOTAL	5,538,249			\$ 479,050,785	\$ 23,636,089	\$ 502,686,874	\$33,533,555	7,038

*Non-local ratio average derived from the 2006 Florida State Park Visitor Study.

**Per person per day visitor expenditure data is provided by Visit Florida.

***16 jobs per \$1 million in total expenditures in local area [Thomas, C., Huber, C. & Koontz, L. 2012 National Park Visitor Spending Effects: Economic Contributions to Local Communities, States, and the Nation. Fort Collins, Colorado: U.S. Geological Survey & National Park Service].

**STATE PARK SYSTEM DIRECT ECONOMIC IMPACT ASSESSMENT
FISCAL YEAR 2019-2020
DISTRICT 5**

PARK	PARK ANNUAL ATTENDANCE	AVERAGE NON-LOCAL VISITOR PERCENT**	AVERAGE PER-PERSON/DAY EXPENDITURE**	VISITOR EXPENDITURES IN LOCAL AREA	FY 19/20 EXPENDITURES	TOTAL DIRECT ECONOMIC IMPACT	INCREASED STATE SALES TAX REVENUE ON VISITOR EXPENDITURES (7%)	TOTAL JOBS SUPPORTED ***
Atlantic Ridge	6,039	0.74	\$ 116.89	\$ 522,365	\$ 124,734	\$ 647,099	\$ 36,566	9
Avalon	159,423	0.74	\$ 116.89	\$ 13,789,866	\$ 147,734	\$ 13,937,601	\$ 965,291	195
Bahia Honda	359,134	0.74	\$ 116.89	\$ 31,064,588	\$ 5,531,343	\$ 36,595,932	\$ 2,174,521	512
Bill Baggs Cape Florida	406,057	0.74	\$ 116.89	\$ 35,123,362	\$ 1,172,831	\$ 36,296,193	\$ 2,458,635	508
Curry Hammock	65,976	0.74	\$ 116.89	\$ 5,706,832	\$ 588,655	\$ 6,295,486	\$ 399,478	88
Dagny Johnson Key Largo Hammock	19,041	0.74	\$ 116.89	\$ 1,647,020	\$ 762,505	\$ 2,409,525	\$ 115,291	34
Florida Keys Overseas Heritage Trail	1,378,791	0.74	\$ 116.89	\$ 119,263,491	\$ 453,090	\$ 119,716,581	\$ 8,348,444	1,676
Fort Pierce Inlet (includes Jack Island)	207,243	0.74	\$ 116.89	\$ 17,926,229	\$ 786,268	\$ 18,712,497	\$ 1,254,836	262
Fort Zachary Taylor	492,028	0.74	\$ 116.89	\$ 42,559,733	\$ 754,645	\$ 43,314,378	\$ 2,979,181	606
Hugh Taylor Birch	285,725	0.74	\$ 116.89	\$ 24,714,812	\$ 899,006	\$ 25,613,818	\$ 1,730,037	359
Indian Key	13,788	0.74	\$ 116.89	\$ 1,192,643	\$ -	\$ 1,192,643	\$ 83,485	17
John D. MacArthur Beach	99,526	0.74	\$ 116.89	\$ 8,608,860	\$ 737,005	\$ 9,345,864	\$ 602,620	131
John Pennkamp Coral Reef	377,293	0.74	\$ 116.89	\$ 32,635,316	\$ 1,657,552	\$ 34,292,869	\$ 2,284,472	480
John U. Lloyd Beach	210,299	0.74	\$ 116.89	\$ 18,190,569	\$ 1,098,017	\$ 19,288,586	\$ 1,273,340	270
Jonathan Dickinson	255,101	0.74	\$ 116.89	\$ 22,065,879	\$ 1,488,715	\$ 23,554,595	\$ 1,544,612	330
Lignumvitae Key	56,587	0.74	\$ 116.89	\$ 4,894,696	\$ 1,184,250	\$ 6,078,946	\$ 342,629	85
Long Key	31,699	0.74	\$ 116.89	\$ 2,741,919	\$ 707,091	\$ 3,449,010	\$ 191,934	48
Oleta River	241,625	0.74	\$ 116.89	\$ 20,900,224	\$ 974,106	\$ 21,874,331	\$ 1,463,016	306
San Pedro	20,866	0.74	\$ 116.89	\$ 1,804,880	\$ -	\$ 1,804,880	\$ 126,342	25
Savannas	46,954	0.74	\$ 116.89	\$ 4,061,455	\$ 623,080	\$ 4,684,535	\$ 284,302	66
Seabranck	43,810	0.74	\$ 116.89	\$ 3,789,504	\$ -	\$ 3,789,504	\$ 265,265	53
St. Lucie Inlet	9,596	0.74	\$ 116.89	\$ 830,041	\$ 363,830	\$ 1,193,871	\$ 58,103	17
The Barnacle	119,544	0.74	\$ 116.89	\$ 10,340,389	\$ 328,398	\$ 10,668,786	\$ 723,827	149
Windley Key Fossil Reef	11,273	0.74	\$ 116.89	\$ 975,099	\$ 140,620	\$ 1,115,718	\$ 68,257	16
District 5 Administration					\$ 1,320,307	\$ 1,320,307	\$ -	18
DISTRICT 5 TOTAL	4,917,418			\$ 425,349,773	\$ 21,843,781	\$ 447,193,554	\$ 29,774,484	6,261

**Non-local ratio average derived from the 2006 Florida State Park Visitor Study.

***Per person per day visitor expenditure data is provided by Visit Florida.

***16 jobs per \$1 million in total expenditures in local area [Thomas, C., Huber, C. & Koontz, L. 2012. *National Park Visitor Spending Effects: Economic Contributions to Local Communities, States, and the Nation*. Fort Collins, Colorado: U.S. Geological Survey & National Park Service].

HISTORIC BEGINNINGS

Koreshan State Park offers a window into the lives of a unique and interesting pioneer group that made its home under towering oaks on the banks of the Estero River.

The founding of the Koreshan Unity Settlement in Florida continued a movement that began in Moravia, New York, in 1880. Dr. Cyrus R. Teed led the religious group that shared a commitment to communal living and a belief that the universe existed on the inside of the Earth.

Facing criticism and hostility for their beliefs, Dr. Teed and 200 followers relocated to the Florida frontier in 1894 to build their utopian community. Encouraged by their visionary leader, the industrious Koreshans built and operated a store, bakery, sawmill, boat works, printing press and machine shop. Education, science and art also helped shape the community, which produced plays and created elaborate gardens.

After the death of Dr. Teed in 1908, membership of his religious group began to decline. In 1961, the four remaining members deeded 305 acres of their land to the state of Florida as a park and memorial. The Koreshan Unity Settlement Historic District is on the National Register of Historic Places.

Koreshan State Park maintains the heart of Dr. Teed's "New Jerusalem" with historic buildings and landscaped grounds. Today, the pioneer settlement is a quiet refuge with opportunities to learn and to enjoy nature.



KORESHAN STATE PARK

3800 Corkscrew Road
Estero, FL 33928
239-992-0311

PARK GUIDELINES

- Hours are 8 a.m. until sunset, 365 days a year.
- An entrance fee is required.
- All plants, animals and park property are protected. Please help preserve our historic resources.
- Pets are permitted in designated areas only. Pets must be kept on a hand-held leash no longer than 6 feet and well-behaved at all times.
- Fishing, boating and fires are allowed in designated areas only. A Florida fishing license may be required.
- Fireworks and hunting are prohibited.
- Consumption of alcoholic beverages is prohibited, except in designated areas

MORE INFORMATION

- Inquire at the ranger station about becoming a volunteer.
- For camping information, call 866-I CAMP FL, or contact Reserve America at 800-326-3521 or TDD 888-433-0287 or online at ReserveAmerica.com.
- Florida State Parks are committed to providing equal access to all facilities and programs. Should you need assistance to enable your participation, please contact the ranger station.

FloridaStateParks.org

Follow us on social media
#FLStateParks



KORESHAN STATE PARK

A historic treasure



**FLORIDA
STATE PARKS**

...the Real Florida™

EXPERIENCES AND AMENITIES

Experience the past as you explore the place where the settlers of the Koreshan Unity lived and worked. Join a **guided tour** and learn about the daily life of the Koreshans, from what they ate to how they produced electricity. **Self-guided tour booklets** are available.

Visitors also can enjoy **hiking, picnicking, canoeing** and **camping** in the 200-acre park.

A **nature trail** meanders along the Estero River through pines, palmettos, oaks and palms where bobcats, gray foxes, river otters and alligators can be found. Koreshan is home to over 100 bird species, including bald eagles.

A **boat ramp** provides access to the brackish Estero River with snook, mullet and other popular game fish. Estero Bay is nearby and offers saltwater **fishing**. **Canoe and kayak rentals** are available at the park.

Sixty secluded **campsites** have water, electricity, a picnic table and fire ring. Other amenities include a utility area with a washer, dryer and sinks, and a vending machine. Twelve tent-only campsites are located next to the Estero River; limited hammock camping is available. A well-shaded **picnic area** with a **playground** is a short walk away.

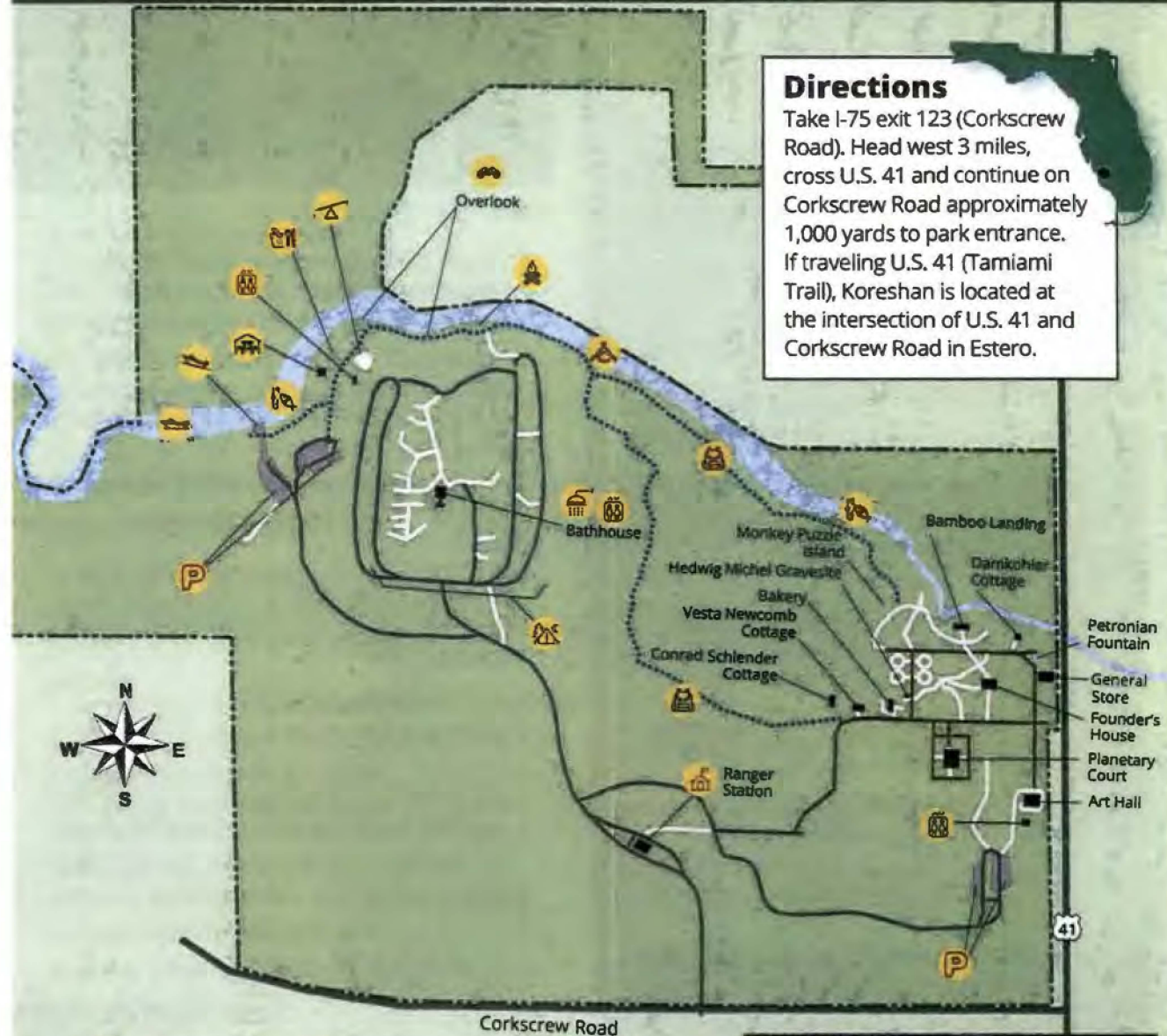
The nearest Gulf Coast beaches are found to the south at Delnor-Wiggins Pass State Park and to the west at Lovers Key State Park. Estero Bay Preserve State Park, just northwest of Koreshan State Park, has hiking trails.



Koreshan State Park

Directions

Take I-75 exit 123 (Corkscrew Road). Head west 3 miles, cross U.S. 41 and continue on Corkscrew Road approximately 1,000 yards to park entrance. If traveling U.S. 41 (Tamiami Trail), Koreshan is located at the intersection of U.S. 41 and Corkscrew Road in Estero.



PO00316_04.20

	Bathhouse		Canoeing/Kayaking		Pavilion
	Boating		Fishing		Picnicking
	Boat Ramp		Hiking		Playground
	Campfire Circle		Parking		Restrooms
	Camping		Nature Trail		Wildlife Viewing



CPH, INC.
 2216 ALTAMONT AVENUE
 FORT MYERS, FL 33901
 Phone Number: 239-332-5499
 Fax Number: 239-332-2955

Date: 4/9/2020
 Koreshan State Park Boat Ramp & Kayak Launch
 Estero, FL

Preliminary Opinion of Probable Cost

Item	Quantity	Unit	Unit Cost	Total
0101 1 Mobilization	1	Lump Sum	\$20,000.00	\$20,000.00
0104 11 Floating Turbidity Barrier	150	L.F.	\$10.00	\$1,500.00
0110 1 1 Clearing and Grubbing	0.1	AC.	\$10,000.00	\$1,000.00
0120 1 Regular Excavation	133	C.Y.	\$6.00	\$798.00
0145 1 Geosynthetic Reinforced Soil Slope	2817	S.F.	\$7.00	\$19,719.00
0160 4 Type B Stabilization	313	S.Y.	\$5.00	\$1,565.00
0265 709 Optional Base Group 9	130	S.Y.	\$20.00	\$2,600.00
0285 785 Optional Base - 12" Graded Aggregate	70	S.Y.	\$75.00	\$5,250.00
0339 1 Miscellaneous Asphalt Pavement	15	TN.	\$460.00	\$6,900.00
0350 3 5 Plain Cement Pavement, 6"	52	S.Y.	\$65.00	\$3,380.00
0400 0 11 Concrete Class NS, Gravity Wall	15	C.Y.	\$547.39	\$8,210.85
0400 2 8 Class II Concrete, Bulkhead	12	C.Y.	\$1,532.00	\$18,384.00
0455 14 Concrete Sheet Piling, 10" x 30"	184	L.F.	\$600.00	\$110,400.00
0515 2311 Ped/Bicycle Railing, Alum, 42", Type 1	283	L.F.	\$74.00	\$20,942.00
0522 1 Concrete Sidewalk & Driveways, 4"	85	S.Y.	\$39.00	\$3,315.00
0711 11123 Thermoplastic, STD, White, Solid, 12"	26	L.F.	\$4.00	\$104.00
0711 11125 Thermoplastic, STD, White, Solid, 24"	21	L.F.	\$6.00	\$126.00
Boat Ramp Removal / Dredging / Replacement	1	LS	\$50,000.00	\$50,000.00
Composite Floating Dock	1	LS	\$13,000.00	\$13,000.00
Composite Kayak Launch	1	EACH	\$10,000.00	\$10,000.00
Pilings	1	LS	\$17,500.00	\$17,500.00
10" CCA Treated Wood Anchor Piles with Caps	3	EACH	\$100.00	\$300.00
Aluminum Gangway	1	EACH	\$10,000.00	\$10,000.00
Sub-total				\$324,993.85
TOTAL ONSITE CONSTRUCTION COST				\$324,993.85
<i>Contingency (10%)</i>				<i>\$32,499.39</i>
Total Cost				\$357,493.24

Jeffrey M Satfield, P.E.

License #61905

4/27/2020

Wayne Thomas
Department of Environmental Protection
Project Manager
Bureau of Design and Construction
3800 Commonwealth Boulevard 260M, MS 520
Tallahassee, FL 32399

RE: *CN210*
Koreshan State Park - Boat Ramp/Canoe Launch Project

Dear *Wayne*;

For your review, CPH, Inc., has provided a proposal summary and man-hour documentation for the services tasks identified below:

- FDEP has requested a Construction Administration Proposal for the Koreshan ADA Boat Ramp/Kayak Launch Project.

Please review the attached Proposal Summary and deliverables.

Sincerely,

Ariel Elvambuena, P.E.
CPH, Inc.

**Boat Ramp Design
Koreshan State Park
CN210, TA20**

Subtask 7: Construction Administration Services

Description:

- 7A: Bidding - CPH will provide bid phase services to include: Preparing the final plans including a bid form to be used by potential contractors bidding on the project, attend the Pre-Bid meeting and respond to contractor Requests for Information (RFI) during the bid.
- 7B: Construction Phase Services – CPH will provide Construction Administration Services to include: Attend the pre-construction meeting, perform up to 4 progress inspections of the project, responding to contractor RFI during construction, review and approve (or reject) shop drawings, attending the substantial and final walk-through inspections, and providing project certification. CPH will assist should any revision to the plans occur.

Deliverable:

- 7A: Bidding - CPH will provide a complete plan set in pdf format suitable for FDEP to bid the project and responses to RFIs (as needed).
- 7B: Construction Phase Services – CPH will provide responses to RFIs (as needed) shop drawings approvals/resubmittals, punchlist reports for each of the four progress inspections and two walk-through inspections noted above, and project completion certification, in pdf format

Performance Measure: Deliverables will be reviewed by the Department to confirm they are complete, accurate, and timely.

Fixed Price Cost:

Subtask 7A - Bidding				
Firm Name	Position Classification	Hourly Rate	Hours	Total Fixed Price Cost
CPH, Inc.	Sr. Project Manager	\$132.61	1	\$132.61
CPH, Inc.	Project Manager	\$98.73	2	\$197.46
CPH, Inc.	Project Engineer	\$73.37	20	\$1,467.40
			Total	\$1,797.47
Subtask 7B – Construction Phase Services				
Firm Name	Position Classification	Hourly Rate	Hours	Total Fixed Price Cost
CPH, Inc.	Sr. Construction Manager	40	32	\$3,469.12
CPH, Inc.	Administrative	\$59.24	20	\$1,184.80
			Total	\$4,653.92

Total for Subtask 7: \$6,451.39

Project Schedule:

Activity	Duration (Calendar Days)	Dates
Subtask 7A: Bidding	Construction Duration	
Subtask 7B: Construction Phase Services	Construction Duration	

Summary of Fees:

Subtask	Subtask Fixed Price Cost	Subtask Reimbursable
Subtask 7A: Bidding	\$1,797.47	
Subtask 7B: Construction Phase Services	\$4,653.92	
Total Fixed Cost:	\$6,451.39	
Total Reimbursable Cost:	\$0	
Overall Total Cost:	\$6,451.39	

Payment will be made upon approval of deliverables for each subtask by the FDEP in the amount specified.

FDEP GENERAL NOTES

1. The contractor shall be responsible for obtaining all necessary permits from the appropriate agencies.
2. The contractor shall be responsible for obtaining all necessary easements from the appropriate agencies.
3. The contractor shall be responsible for obtaining all necessary utility information from the appropriate agencies.
4. The contractor shall be responsible for obtaining all necessary survey information from the appropriate agencies.
5. The contractor shall be responsible for obtaining all necessary engineering information from the appropriate agencies.
6. The contractor shall be responsible for obtaining all necessary construction information from the appropriate agencies.
7. The contractor shall be responsible for obtaining all necessary maintenance information from the appropriate agencies.
8. The contractor shall be responsible for obtaining all necessary safety information from the appropriate agencies.
9. The contractor shall be responsible for obtaining all necessary environmental information from the appropriate agencies.
10. The contractor shall be responsible for obtaining all necessary historical information from the appropriate agencies.
11. The contractor shall be responsible for obtaining all necessary archaeological information from the appropriate agencies.
12. The contractor shall be responsible for obtaining all necessary paleontological information from the appropriate agencies.
13. The contractor shall be responsible for obtaining all necessary biological information from the appropriate agencies.
14. The contractor shall be responsible for obtaining all necessary geological information from the appropriate agencies.
15. The contractor shall be responsible for obtaining all necessary hydrological information from the appropriate agencies.
16. The contractor shall be responsible for obtaining all necessary meteorological information from the appropriate agencies.
17. The contractor shall be responsible for obtaining all necessary climatological information from the appropriate agencies.
18. The contractor shall be responsible for obtaining all necessary oceanographic information from the appropriate agencies.
19. The contractor shall be responsible for obtaining all necessary atmospheric information from the appropriate agencies.
20. The contractor shall be responsible for obtaining all necessary geophysical information from the appropriate agencies.
21. The contractor shall be responsible for obtaining all necessary geodetic information from the appropriate agencies.
22. The contractor shall be responsible for obtaining all necessary geomatics information from the appropriate agencies.
23. The contractor shall be responsible for obtaining all necessary geographic information from the appropriate agencies.
24. The contractor shall be responsible for obtaining all necessary cartographic information from the appropriate agencies.
25. The contractor shall be responsible for obtaining all necessary topographic information from the appropriate agencies.
26. The contractor shall be responsible for obtaining all necessary hydrographic information from the appropriate agencies.
27. The contractor shall be responsible for obtaining all necessary bathymetric information from the appropriate agencies.
28. The contractor shall be responsible for obtaining all necessary tidal information from the appropriate agencies.
29. The contractor shall be responsible for obtaining all necessary current information from the appropriate agencies.
30. The contractor shall be responsible for obtaining all necessary wave information from the appropriate agencies.
31. The contractor shall be responsible for obtaining all necessary wind information from the appropriate agencies.
32. The contractor shall be responsible for obtaining all necessary precipitation information from the appropriate agencies.
33. The contractor shall be responsible for obtaining all necessary temperature information from the appropriate agencies.
34. The contractor shall be responsible for obtaining all necessary humidity information from the appropriate agencies.
35. The contractor shall be responsible for obtaining all necessary atmospheric pressure information from the appropriate agencies.
36. The contractor shall be responsible for obtaining all necessary solar radiation information from the appropriate agencies.
37. The contractor shall be responsible for obtaining all necessary ultraviolet radiation information from the appropriate agencies.
38. The contractor shall be responsible for obtaining all necessary infrared radiation information from the appropriate agencies.
39. The contractor shall be responsible for obtaining all necessary visible light information from the appropriate agencies.
40. The contractor shall be responsible for obtaining all necessary radio wave information from the appropriate agencies.
41. The contractor shall be responsible for obtaining all necessary microwave information from the appropriate agencies.
42. The contractor shall be responsible for obtaining all necessary acoustic information from the appropriate agencies.
43. The contractor shall be responsible for obtaining all necessary seismic information from the appropriate agencies.
44. The contractor shall be responsible for obtaining all necessary geoelectrical information from the appropriate agencies.
45. The contractor shall be responsible for obtaining all necessary geophysical information from the appropriate agencies.
46. The contractor shall be responsible for obtaining all necessary geodetic information from the appropriate agencies.
47. The contractor shall be responsible for obtaining all necessary geomatics information from the appropriate agencies.
48. The contractor shall be responsible for obtaining all necessary geographic information from the appropriate agencies.
49. The contractor shall be responsible for obtaining all necessary cartographic information from the appropriate agencies.
50. The contractor shall be responsible for obtaining all necessary topographic information from the appropriate agencies.
51. The contractor shall be responsible for obtaining all necessary hydrographic information from the appropriate agencies.
52. The contractor shall be responsible for obtaining all necessary bathymetric information from the appropriate agencies.
53. The contractor shall be responsible for obtaining all necessary tidal information from the appropriate agencies.
54. The contractor shall be responsible for obtaining all necessary current information from the appropriate agencies.
55. The contractor shall be responsible for obtaining all necessary wave information from the appropriate agencies.
56. The contractor shall be responsible for obtaining all necessary wind information from the appropriate agencies.
57. The contractor shall be responsible for obtaining all necessary precipitation information from the appropriate agencies.
58. The contractor shall be responsible for obtaining all necessary temperature information from the appropriate agencies.
59. The contractor shall be responsible for obtaining all necessary humidity information from the appropriate agencies.
60. The contractor shall be responsible for obtaining all necessary atmospheric pressure information from the appropriate agencies.
61. The contractor shall be responsible for obtaining all necessary solar radiation information from the appropriate agencies.
62. The contractor shall be responsible for obtaining all necessary ultraviolet radiation information from the appropriate agencies.
63. The contractor shall be responsible for obtaining all necessary infrared radiation information from the appropriate agencies.
64. The contractor shall be responsible for obtaining all necessary visible light information from the appropriate agencies.
65. The contractor shall be responsible for obtaining all necessary radio wave information from the appropriate agencies.
66. The contractor shall be responsible for obtaining all necessary microwave information from the appropriate agencies.
67. The contractor shall be responsible for obtaining all necessary acoustic information from the appropriate agencies.
68. The contractor shall be responsible for obtaining all necessary seismic information from the appropriate agencies.
69. The contractor shall be responsible for obtaining all necessary geoelectrical information from the appropriate agencies.
70. The contractor shall be responsible for obtaining all necessary geophysical information from the appropriate agencies.
71. The contractor shall be responsible for obtaining all necessary geodetic information from the appropriate agencies.
72. The contractor shall be responsible for obtaining all necessary geomatics information from the appropriate agencies.
73. The contractor shall be responsible for obtaining all necessary geographic information from the appropriate agencies.
74. The contractor shall be responsible for obtaining all necessary cartographic information from the appropriate agencies.
75. The contractor shall be responsible for obtaining all necessary topographic information from the appropriate agencies.
76. The contractor shall be responsible for obtaining all necessary hydrographic information from the appropriate agencies.
77. The contractor shall be responsible for obtaining all necessary bathymetric information from the appropriate agencies.
78. The contractor shall be responsible for obtaining all necessary tidal information from the appropriate agencies.
79. The contractor shall be responsible for obtaining all necessary current information from the appropriate agencies.
80. The contractor shall be responsible for obtaining all necessary wave information from the appropriate agencies.
81. The contractor shall be responsible for obtaining all necessary wind information from the appropriate agencies.
82. The contractor shall be responsible for obtaining all necessary precipitation information from the appropriate agencies.
83. The contractor shall be responsible for obtaining all necessary temperature information from the appropriate agencies.
84. The contractor shall be responsible for obtaining all necessary humidity information from the appropriate agencies.
85. The contractor shall be responsible for obtaining all necessary atmospheric pressure information from the appropriate agencies.
86. The contractor shall be responsible for obtaining all necessary solar radiation information from the appropriate agencies.
87. The contractor shall be responsible for obtaining all necessary ultraviolet radiation information from the appropriate agencies.
88. The contractor shall be responsible for obtaining all necessary infrared radiation information from the appropriate agencies.
89. The contractor shall be responsible for obtaining all necessary visible light information from the appropriate agencies.
90. The contractor shall be responsible for obtaining all necessary radio wave information from the appropriate agencies.
91. The contractor shall be responsible for obtaining all necessary microwave information from the appropriate agencies.
92. The contractor shall be responsible for obtaining all necessary acoustic information from the appropriate agencies.
93. The contractor shall be responsible for obtaining all necessary seismic information from the appropriate agencies.
94. The contractor shall be responsible for obtaining all necessary geoelectrical information from the appropriate agencies.
95. The contractor shall be responsible for obtaining all necessary geophysical information from the appropriate agencies.
96. The contractor shall be responsible for obtaining all necessary geodetic information from the appropriate agencies.
97. The contractor shall be responsible for obtaining all necessary geomatics information from the appropriate agencies.
98. The contractor shall be responsible for obtaining all necessary geographic information from the appropriate agencies.
99. The contractor shall be responsible for obtaining all necessary cartographic information from the appropriate agencies.
100. The contractor shall be responsible for obtaining all necessary topographic information from the appropriate agencies.

SYMBOLS:

- 1. 1/2" = 1' (Scale)
- 2. 1/4" = 1' (Scale)
- 3. 1/8" = 1' (Scale)
- 4. 1/16" = 1' (Scale)
- 5. 1/32" = 1' (Scale)
- 6. 1/64" = 1' (Scale)
- 7. 1/128" = 1' (Scale)
- 8. 1/256" = 1' (Scale)
- 9. 1/512" = 1' (Scale)
- 10. 1/1024" = 1' (Scale)
- 11. 1/2048" = 1' (Scale)
- 12. 1/4096" = 1' (Scale)
- 13. 1/8192" = 1' (Scale)
- 14. 1/16384" = 1' (Scale)
- 15. 1/32768" = 1' (Scale)
- 16. 1/65536" = 1' (Scale)
- 17. 1/131072" = 1' (Scale)
- 18. 1/262144" = 1' (Scale)
- 19. 1/524288" = 1' (Scale)
- 20. 1/1048576" = 1' (Scale)
- 21. 1/2097152" = 1' (Scale)
- 22. 1/4194304" = 1' (Scale)
- 23. 1/8388608" = 1' (Scale)
- 24. 1/16777216" = 1' (Scale)
- 25. 1/33554432" = 1' (Scale)
- 26. 1/67108864" = 1' (Scale)
- 27. 1/134217728" = 1' (Scale)
- 28. 1/268435456" = 1' (Scale)
- 29. 1/536870912" = 1' (Scale)
- 30. 1/1073741824" = 1' (Scale)
- 31. 1/2147483648" = 1' (Scale)
- 32. 1/4294967296" = 1' (Scale)
- 33. 1/8589934592" = 1' (Scale)
- 34. 1/17179869184" = 1' (Scale)
- 35. 1/34359738368" = 1' (Scale)
- 36. 1/68719476736" = 1' (Scale)
- 37. 1/137438953472" = 1' (Scale)
- 38. 1/274877906944" = 1' (Scale)
- 39. 1/549755813888" = 1' (Scale)
- 40. 1/1099511627776" = 1' (Scale)
- 41. 1/2199023255552" = 1' (Scale)
- 42. 1/4398046511104" = 1' (Scale)
- 43. 1/8796093022208" = 1' (Scale)
- 44. 1/17592186044416" = 1' (Scale)
- 45. 1/35184372088832" = 1' (Scale)
- 46. 1/70368744177664" = 1' (Scale)
- 47. 1/140737488355328" = 1' (Scale)
- 48. 1/281474976710656" = 1' (Scale)
- 49. 1/562949953421312" = 1' (Scale)
- 50. 1/1125899906842624" = 1' (Scale)
- 51. 1/2251799813685248" = 1' (Scale)
- 52. 1/4503599627370496" = 1' (Scale)
- 53. 1/9007199254740992" = 1' (Scale)
- 54. 1/18014398509481984" = 1' (Scale)
- 55. 1/36028797018963968" = 1' (Scale)
- 56. 1/72057594037927936" = 1' (Scale)
- 57. 1/144115188075855872" = 1' (Scale)
- 58. 1/288230376151711744" = 1' (Scale)
- 59. 1/576460752303423488" = 1' (Scale)
- 60. 1/1152921504606846976" = 1' (Scale)
- 61. 1/2305843009213693952" = 1' (Scale)
- 62. 1/4611686018427387904" = 1' (Scale)
- 63. 1/9223372036854775808" = 1' (Scale)
- 64. 1/18446744073709551616" = 1' (Scale)
- 65. 1/36893488147419103232" = 1' (Scale)
- 66. 1/73786976294838206464" = 1' (Scale)
- 67. 1/147573952589676412928" = 1' (Scale)
- 68. 1/295147905179352825856" = 1' (Scale)
- 69. 1/590295810358705651712" = 1' (Scale)
- 70. 1/1180591620717411303424" = 1' (Scale)
- 71. 1/2361183241434822606848" = 1' (Scale)
- 72. 1/4722366482869645213696" = 1' (Scale)
- 73. 1/9444732965739290427392" = 1' (Scale)
- 74. 1/18889465931478580854784" = 1' (Scale)
- 75. 1/37778931862957161709568" = 1' (Scale)
- 76. 1/75557863725914323419136" = 1' (Scale)
- 77. 1/151115727451828646838272" = 1' (Scale)
- 78. 1/302231454903657293676544" = 1' (Scale)
- 79. 1/604462909807314587353088" = 1' (Scale)
- 80. 1/1208925819614629174706176" = 1' (Scale)
- 81. 1/2417851639229258349412352" = 1' (Scale)
- 82. 1/4835703278458516698824704" = 1' (Scale)
- 83. 1/9671406556917033397649408" = 1' (Scale)
- 84. 1/19342813113834066795298816" = 1' (Scale)
- 85. 1/38685626227668133590597632" = 1' (Scale)
- 86. 1/77371252455336267181195264" = 1' (Scale)
- 87. 1/154742504910672534362390528" = 1' (Scale)
- 88. 1/309485009821345068724781056" = 1' (Scale)
- 89. 1/618970019642690137449562112" = 1' (Scale)
- 90. 1/1237940039285380274899124224" = 1' (Scale)
- 91. 1/2475880078570760549798248448" = 1' (Scale)
- 92. 1/4951760157141521099596496896" = 1' (Scale)
- 93. 1/9903520314283042199192993792" = 1' (Scale)
- 94. 1/19807040628566084398385987584" = 1' (Scale)
- 95. 1/39614081257132168796771975168" = 1' (Scale)
- 96. 1/79228162514264337593543950336" = 1' (Scale)
- 97. 1/158456325028528675187087900672" = 1' (Scale)
- 98. 1/316912650057057350374175801344" = 1' (Scale)
- 99. 1/633825300114114700748351602688" = 1' (Scale)
- 100. 1/1267650600228229401496703205376" = 1' (Scale)

ABBREVIATIONS:

- 1. A - Access
- 2. B - Barrier
- 3. C - Canal
- 4. D - Dam
- 5. E - Easement
- 6. F - Fence
- 7. G - Gate
- 8. H - Highway
- 9. I - Island
- 10. J - Jetty
- 11. K - Kayak
- 12. L - Launch
- 13. M - Marina
- 14. N - Navigational
- 15. O - Obstruction
- 16. P - Pier
- 17. Q - Quay
- 18. R - Ramp
- 19. S - Sign
- 20. T - Tidal
- 21. U - Utility
- 22. V - Vessel
- 23. W - Wall
- 24. X - Xing
- 25. Y - Yacht
- 26. Z - Zone
- 27. AA - Area
- 28. AB - Abutment
- 29. AC - Accessory
- 30. AD - Addition
- 31. AE - Alteration
- 32. AF - Annex
- 33. AG - Aisle
- 34. AH - Aisleway
- 35. AI - Aisleway
- 36. AJ - Aisleway
- 37. AK - Aisleway
- 38. AL - Aisleway
- 39. AM - Aisleway
- 40. AN - Aisleway
- 41. AO - Aisleway
- 42. AP - Aisleway
- 43. AQ - Aisleway
- 44. AR - Aisleway
- 45. AS - Aisleway
- 46. AT - Aisleway
- 47. AU - Aisleway
- 48. AV - Aisleway
- 49. AW - Aisleway
- 50. AX - Aisleway
- 51. AY - Aisleway
- 52. AZ - Aisleway
- 53. BA - Bay
- 54. BB - Bay
- 55. BC - Bay
- 56. BD - Bay
- 57. BE - Bay
- 58. BF - Bay
- 59. BG - Bay
- 60. BH - Bay
- 61. BI - Bay
- 62. BJ - Bay
- 63. BK - Bay
- 64. BL - Bay
- 65. BM - Bay
- 66. BN - Bay
- 67. BO - Bay
- 68. BP - Bay
- 69. BQ - Bay
- 70. BR - Bay
- 71. BS - Bay
- 72. BT - Bay
- 73. BU - Bay
- 74. BV - Bay
- 75. BW - Bay
- 76. BX - Bay
- 77. BY - Bay
- 78. BZ - Bay
- 79. CA - Canal
- 80. CB - Canal
- 81. CC - Canal
- 82. CD - Canal
- 83. CE - Canal
- 84. CF - Canal
- 85. CG - Canal
- 86. CH - Canal
- 87. CI - Canal
- 88. CJ - Canal
- 89. CK - Canal
- 90. CL - Canal
- 91. CM - Canal
- 92. CN - Canal
- 93. CO - Canal
- 94. CP - Canal
- 95. CQ - Canal
- 96. CR - Canal
- 97. CS - Canal
- 98. CT - Canal
- 99. CU - Canal
- 100. CV - Canal

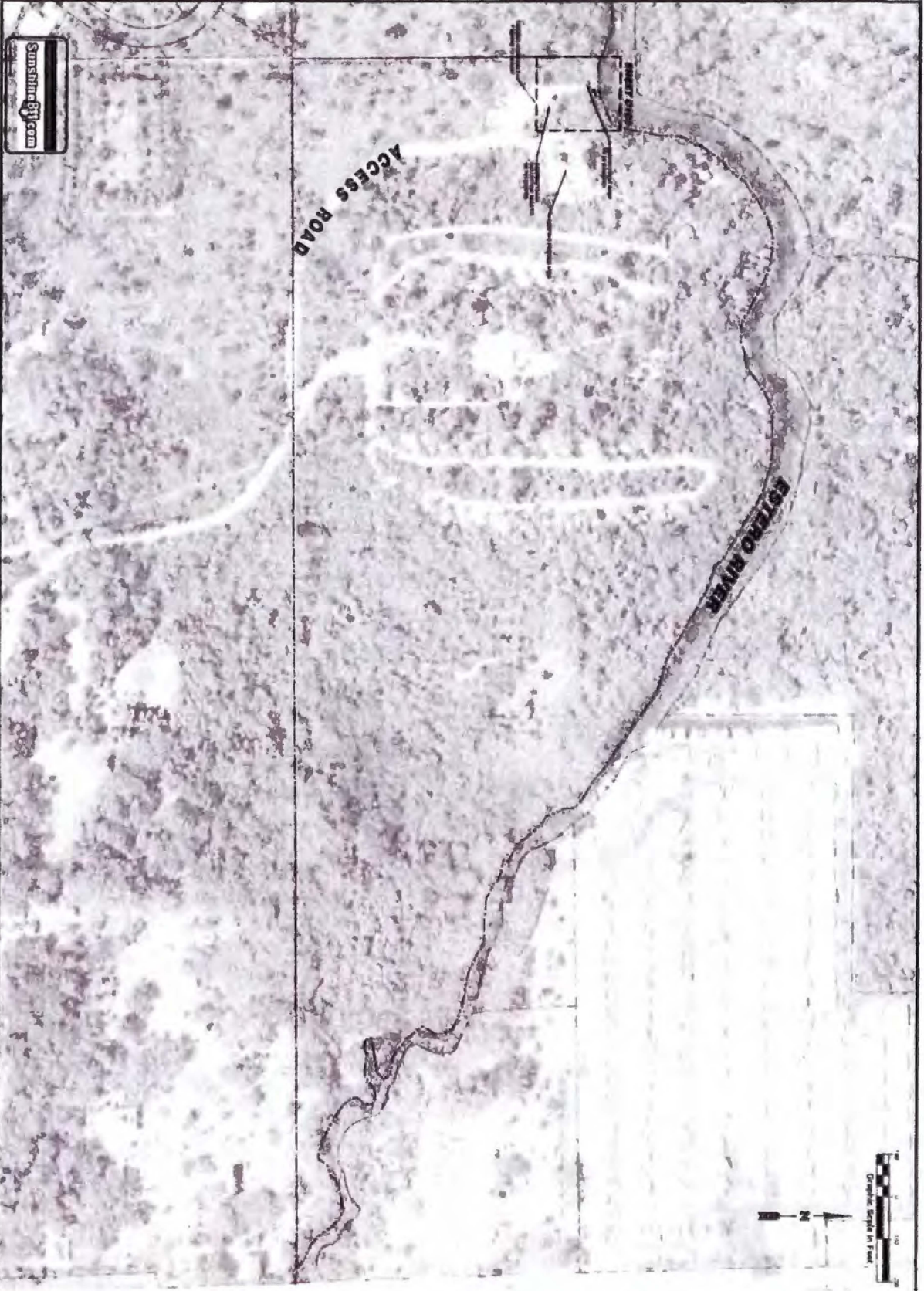
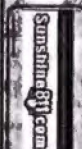
PAINT STRIPES:

- 1. 1/2" = 1' (Scale)
- 2. 1/4" = 1' (Scale)
- 3. 1/8" = 1' (Scale)
- 4. 1/16" = 1' (Scale)
- 5. 1/32" = 1' (Scale)
- 6. 1/64" = 1' (Scale)
- 7. 1/128" = 1' (Scale)
- 8. 1/256" = 1' (Scale)
- 9. 1/512" = 1' (Scale)
- 10. 1/1024" = 1' (Scale)
- 11. 1/2048" = 1' (Scale)
- 12. 1/4096" = 1' (Scale)
- 13. 1/8192" = 1' (Scale)
- 14. 1/16384" = 1' (Scale)
- 15. 1/32768" = 1' (Scale)
- 16. 1/65536" = 1' (Scale)
- 17. 1/131072" = 1' (Scale)
- 18. 1/262144" = 1' (Scale)
- 19. 1/524288" = 1' (Scale)
- 20. 1/1048576" = 1' (Scale)
- 21. 1/2097152" = 1' (Scale)
- 22. 1/4194304" = 1' (Scale)
- 23. 1/8388608" = 1' (Scale)
- 24. 1/16777216" = 1' (Scale)
- 25. 1/33554432" = 1' (Scale)
- 26. 1/67108864" = 1' (Scale)
- 27. 1/134217728" = 1' (Scale)
- 28. 1/268435456" = 1' (Scale)
- 29. 1/536870912" = 1' (Scale)
- 30. 1/1073741824" = 1' (Scale)
- 31. 1/2147483648" = 1' (Scale)
- 32. 1/4294967296" = 1' (Scale)
- 33. 1/8589934592" = 1' (Scale)
- 34. 1/17179869184" = 1' (Scale)
- 35. 1/34359738368" = 1' (Scale)
- 36. 1/68719476736" = 1' (Scale)
- 37. 1/137438953472" = 1' (Scale)
- 38. 1/274877906944" = 1' (Scale)
- 39. 1/549755813888" = 1' (Scale)
- 40. 1/1099511627776" = 1' (Scale)
- 41. 1/2199023255552" = 1' (Scale)
- 42. 1/4398046511104" = 1' (Scale)
- 43. 1/8796093022208" = 1' (Scale)
- 44. 1/17592186044416" = 1' (Scale)
- 45. 1/35184372088832" = 1' (Scale)
- 46. 1/70368744177664" = 1' (Scale)
- 47. 1/140737488355328" = 1' (Scale)
- 48. 1/281474976710656" = 1' (Scale)
- 49. 1/562949953421312" = 1' (Scale)
- 50. 1/1125899906842624" = 1' (Scale)
- 51. 1/2251799813685248" = 1' (Scale)
- 52. 1/4503599627370496" = 1' (Scale)
- 53. 1/9007199254740992" = 1' (Scale)
- 54. 1/18014398509481984" = 1' (Scale)
- 55. 1/36028797018963968" = 1' (Scale)
- 56. 1/72057594037927936" = 1' (Scale)
- 57. 1/144115188075855872" = 1' (Scale)
- 58. 1/288230376151711744" = 1' (Scale)
- 59. 1/576460752303423488" = 1' (Scale)
- 60. 1/1152921504606846976" = 1' (Scale)
- 61. 1/2305843009213693952" = 1' (Scale)
- 62. 1/4611686018427387904" = 1' (Scale)
- 63. 1/9223372036854775808" = 1' (Scale)
- 64. 1/18446744073709551616" = 1' (Scale)
- 65. 1/36893488147419103232" = 1' (Scale)
- 66. 1/73786976294838206464" = 1' (Scale)
- 67. 1/147573952589676412928" = 1' (Scale)
- 68. 1/295147905179352825856" = 1' (Scale)
- 69. 1/590295810358705651712" = 1' (Scale)
- 70. 1/1180591620717411303424" = 1' (Scale)
- 71. 1/2361183241434822606848" = 1' (Scale)
- 72. 1/4722366482869645213696" = 1' (Scale)
- 73. 1/9444732965739290427392" = 1' (Scale)
- 74. 1/18889465931478580854784" = 1' (Scale)
- 75. 1/37778931862957161709568" = 1' (Scale)
- 76. 1/75557863725914323419136" = 1' (Scale)
- 77. 1/151115727451828646838272" = 1' (Scale)
- 78. 1/302231454903657293676544" = 1' (Scale)
- 79. 1/604462909807314587353088" = 1' (Scale)
- 80. 1/1208925819614629174706176" = 1' (Scale)
- 81. 1/2417851639229258349412352" = 1' (Scale)
- 82. 1/4835703278458516698824704" = 1' (Scale)
- 83. 1/9671406556917033397649408" = 1' (Scale)
- 84. 1/19342813113834066795298816" = 1' (Scale)
- 85. 1/38685626227668133590597632" = 1' (Scale)
- 86. 1/77371252455336267181195264" = 1' (Scale)
- 87. 1/154742504910672534362390528" = 1' (Scale)
- 88. 1/309485009821345068724781056" = 1' (Scale)
- 89. 1/618970019642690137449562112" = 1' (Scale)
- 90. 1/1237940039285380274899124224" = 1' (Scale)
- 91. 1/2475880078570760549798248448" = 1' (Scale)
- 92. 1/4951760157141521099596496896" = 1' (Scale)
- 93. 1/9903520314283042199192993792" = 1' (Scale)
- 94. 1/19807040628566084398385987584" = 1' (Scale)
- 95. 1/39614081257132168796771975168" = 1' (Scale)
- 96. 1/79228162514264337593543950336" = 1' (Scale)
- 97. 1/158456325028528675187087900672" = 1' (Scale)
- 98. 1/316912650057057350374175801344" = 1' (Scale)
- 99. 1/633825300114114700748351602688" = 1' (Scale)
- 100. 1/1267650600228229401496703205376" = 1' (Scale)

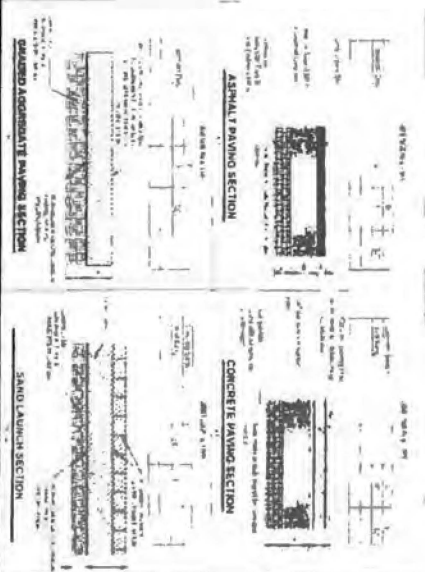
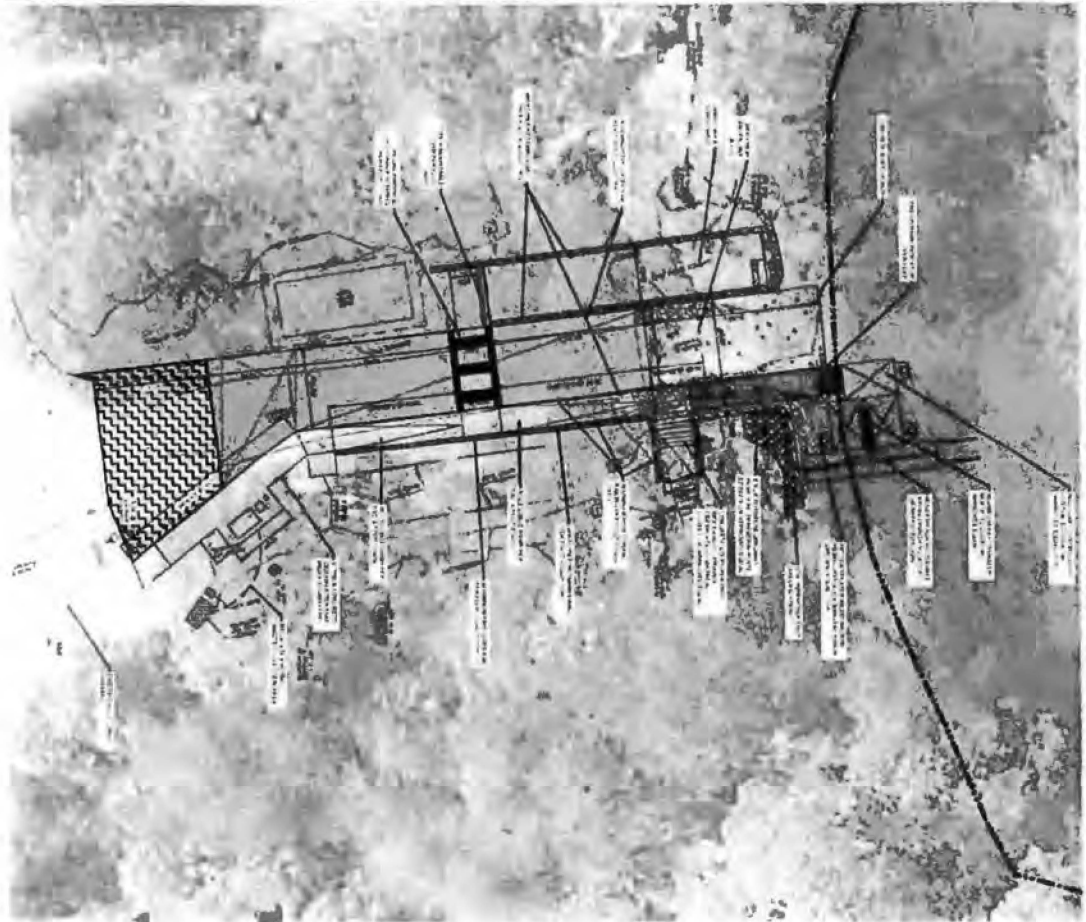
ABBREVIATIONS:

- 1. A - Access
- 2. B - Barrier
- 3. C - Canal
- 4. D - Dam
- 5. E - Easement
- 6. F - Fence
- 7. G - Gate
- 8. H - Highway
- 9. I - Island
- 10. J - Jetty
- 11. K - Kayak
- 12. L - Launch
- 13. M - Marina
- 14. N - Navigational
- 15. O - Obstruction
- 16. P - Pier
- 17. Q - Quay
- 18. R - Ramp
- 19. S - Sign
- 20. T - Tidal
- 21. U - Utility
- 22. V - Vessel
- 23. W - Wall
- 24. X - Xing
- 25. Y - Yacht
- 26. Z - Zone
- 27. AA - Area
- 28. AB - Abutment
- 29. AC - Accessory
- 30. AD - Addition
- 31. AE - Alteration
- 32. AF - Annex
- 33. AG - Aisle
- 34. AH - Aisleway
- 35. AI - Aisleway
- 36. AJ - Aisleway
- 37. AK - Aisleway
- 38. AL - Aisleway
- 39. AM - Aisleway
- 40. AN - Aisleway
- 41. AO - Aisleway
- 42. AP - Aisleway
- 43. AQ - Aisleway
- 44. AR - Aisleway
- 45. AS - Aisleway
- 46. AT - Aisleway
- 47. AU - Aisleway
- 48. AV - Aisleway
- 49. AW - Aisleway
- 50. AX - Aisleway
- 51. AY - Aisleway
- 52. AZ - Aisleway
- 53. BA - Bay
- 54. BB - Bay
- 55. BC - Bay
- 56. BD - Bay
- 57. BE - Bay
- 58. BF - Bay
- 59. BG - Bay
- 60. BH - Bay
- 61. BI - Bay
- 62. BJ - Bay
- 63. BK - Bay
- 64. BL - Bay
- 65. BM - Bay
- 66. BN - Bay
- 67. BO - Bay
- 68. BP - Bay
- 69. BQ - Bay
- 70. BR - Bay
- 71. BS - Bay
- 72. BT - Bay
- 73. BU - Bay
- 74. BV - Bay
- 75. BW - Bay
- 76. BX - Bay
- 77. BY - Bay
- 78. BZ - Bay
- 79. CA - Canal
- 80. CB - Canal
- 81. CC - Canal
- 82. CD - Canal
- 83. CE - Canal
- 84. CF - Canal
- 85. CG - Canal
- 86. CH - Canal
- 87. CI - Canal
- 88. CJ - Canal
- 89. CK - Canal
- 90. CL - Canal
- 91. CM - Canal
- 92. CN - Canal
- 93. CO - Canal
- 94. CP - Canal
- 95. CQ - Canal
- 96. CR - Canal
- 97. CS - Canal
- 98. CT - Canal
- 99. CU - Canal
- 100. CV - Canal

LINE TYPES:



C104	KORSHAN STATE PARK	DATE: 07/01/2015	PROJECT NO: F13615	SCALE: 6G102C	NO.:	DATE:	BY:	CHKD:
	PROJECT LAYOUT	DESIGNED BY: J. ABER	PROJECT NO: F13615	SCALE: 6G102C				
	ADA BOAT RAMP & CANOE / KAYAK LAUNCH	DESIGNED BY: A. ENRIQUETA	PROJECT NO: F13615	SCALE: 6G102C				
		Department of Environmental Protection Division of Recreation and Parks Bureau of Design and Construction 3310 Thomasville Rd, Tallahassee, FL 32309 (850) 488-5377						



WESTLAND IMPACT ARENA 100' x 100' x 10' 100' x 100' x 10' 100' x 100' x 10' 100' x 100' x 10'	INTERMEDIATE SURFACE ARENA 100' x 100' x 10' 100' x 100' x 10' 100' x 100' x 10' 100' x 100' x 10'
--	---

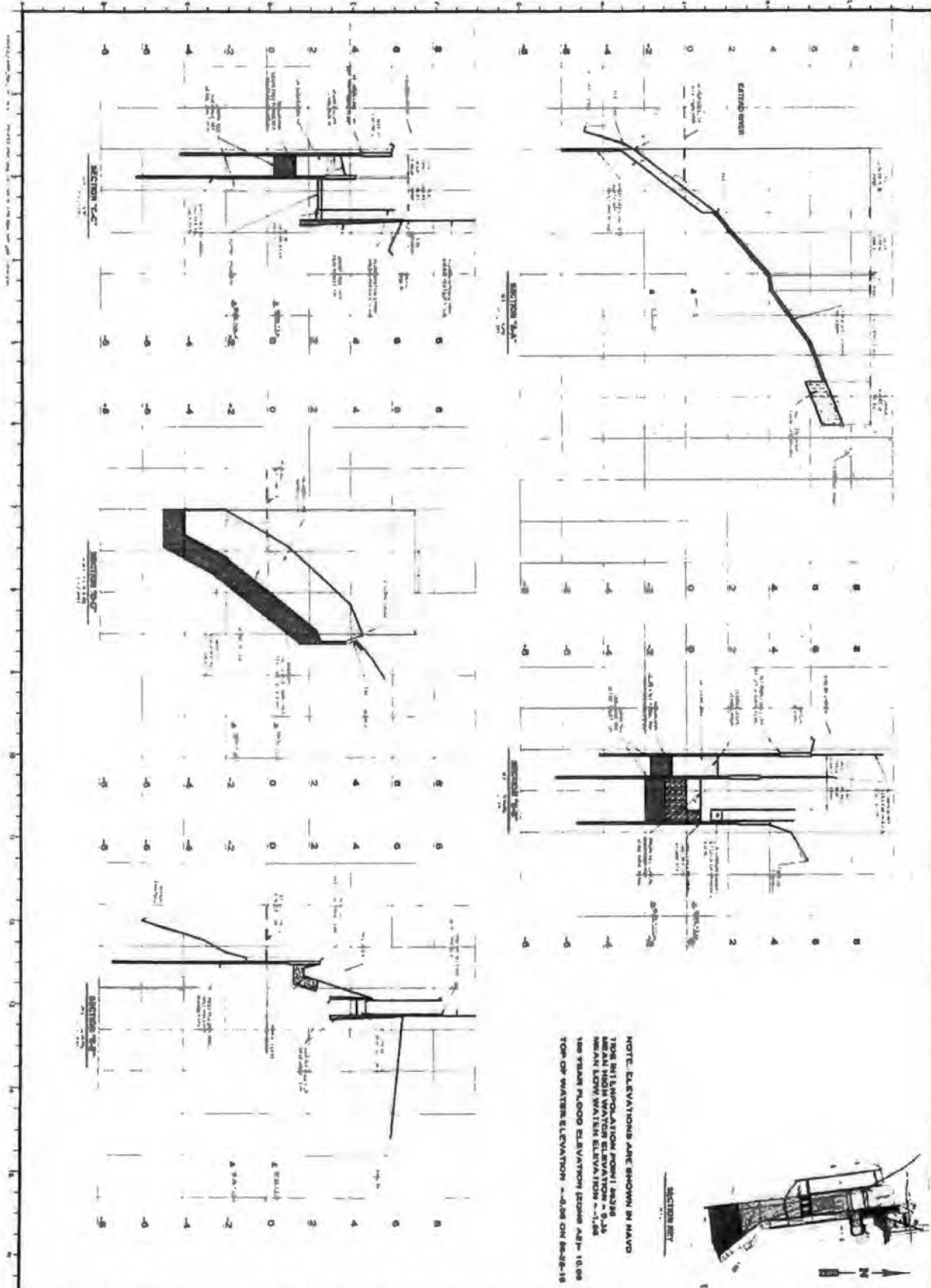
LEGEND:

- ASPHALT PAVING
- CONCRETE PAVING
- GRAVEL ACCUMULATIVE PAVING
- SAND LAUNCH SECTION

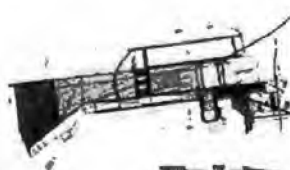
GRAPHIC SCALE IN FEET

0 10 20 30 40 50 60 70 80 90 100

105	KURESCHAN STATE PARK SITE DIMENSION PLAN ADA BOAT RAMP & CANOE / KAYAK LAUNCH	PROJECT NO. 105 DATE 10/24/2014	DESIGNER: J. Ailer CHECKER: J. Zaleski APPROVED: A. Chambers	DRAWING NO. 105-001 PROJECT NO. F13615 SHEET NO. EG103C	SCALE: AS SHOWN DATE: 10/24/2014	SHEET NO. 105-001 TOTAL SHEETS: 105-001
	Department of Environmental Protection Division of Recreation and Parks Bureau of Design and Construction 3501 Thomassville Rd., Tallahassee, FL 32309 (850) 486-6332					



NOTE: ELEVATIONS ARE SHOWN IN NAVD
 1988 DATUM
 MEAN HIGH WATER ELEVATION = 9.34
 MEAN LOW WATER ELEVATION = 7.14
 100 YEAR FLOOD ELEVATION (FORM A3) = 10.00
 TOP OF WATER ELEVATION = 8.28 ON 8/2/18



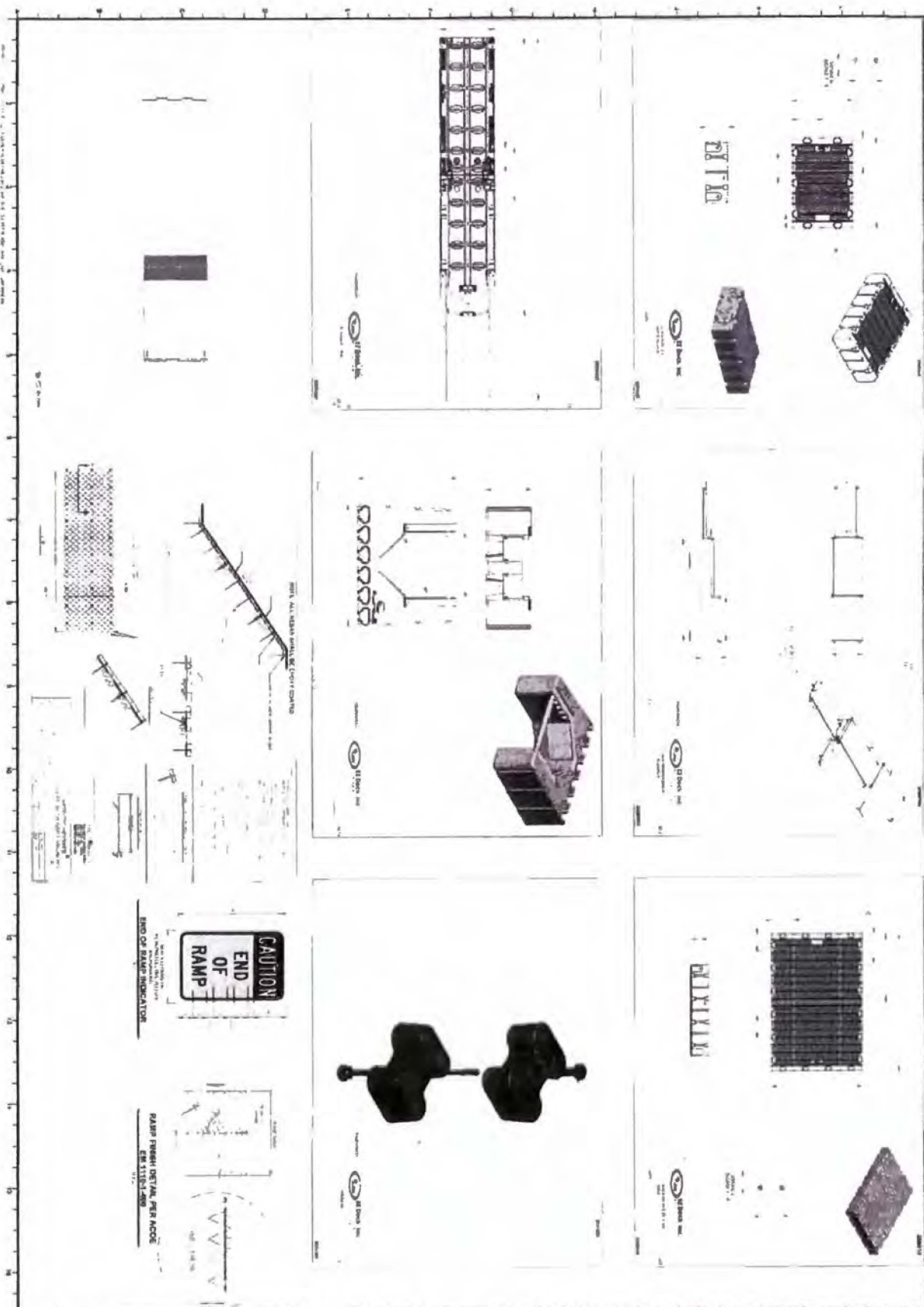
C107

KOKESHAN STATE PARK	
CROSS SECTIONS	
ADA BOAT RAMP & CANOE / KAYAK LAUNCH	

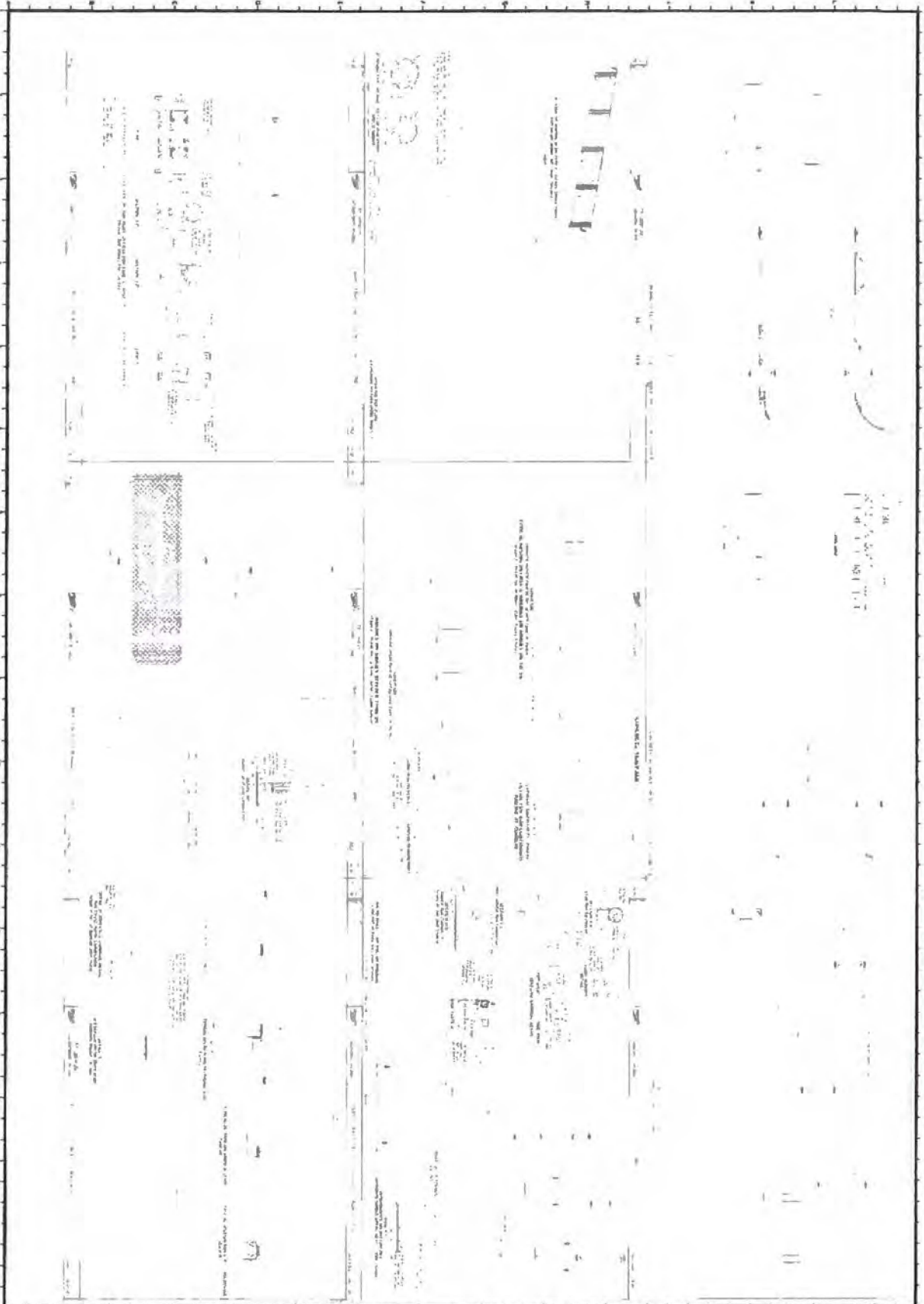
PROFESSIONAL REGISTRATION NO.	REGISTRATION STATE

DESIGNED BY	J. Allen	DATE	07/01/2018
CHECKED BY	V. Zaleski	PROJECT NO.	F13615
DATE	8/2/18	SCALE	AS SHOWN

Department of Environmental Protection Division of Recreation and Parks Bureau of Design and Construction 3546 Thomasville Rd., Tallahassee, FL 32309 (850) 488-5372	
---	--



SCALE C500	KORESHAN STATE PARK CONSTRUCTION DETAILS	PROFESSIONAL REGISTRATION STATE OF FLORIDA REGISTERED PROFESSIONAL ENGINEER No. 12345 EXP. 12/31/2025	Project No. 0701/2019 Date: 07/01/2019 Scale: F13615 Project: EG103C			
	ADA BOAT RAMP & CANCE / KAYAK LAUNCH		Department of Environmental Protection Division of Recreation and Parks Bureau of Design and Construction 2500 E. Missouri Blvd., Tallahassee, FL 32309 (904) 488-5372			



C502	KORESMAN STATE PARK	PROJECT TITLE	STRUCTURAL DETAILS		
	ADA BOAT RAMP & CANOE / KAYAK LAUNCH				
PROFESSIONAL REPRESENTATIVE		DATE		SCALE	
NAME ROBERTA NOLAN, P.E.		DATE 07/01/2015		SCALE AS SHOWN	
PROJECT NO. F12615		DRAWING NO. 06103C		SHEET NO. 1	
DESIGNER J. Allen		CHECKED BY V. Zeleznak		APPROVED BY A. Ehsanzadeh	
cph		A Full Service A & E Firm		Department of Environmental Protection	
3540 Thomasville Rd., Tallahassee, FL 32309 (904) 486-5372		Bureau of Design and Construction		3540 Thomasville Rd., Tallahassee, FL 32309 (904) 486-5372	

BUDGET BREAKDOWN

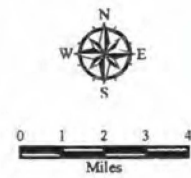
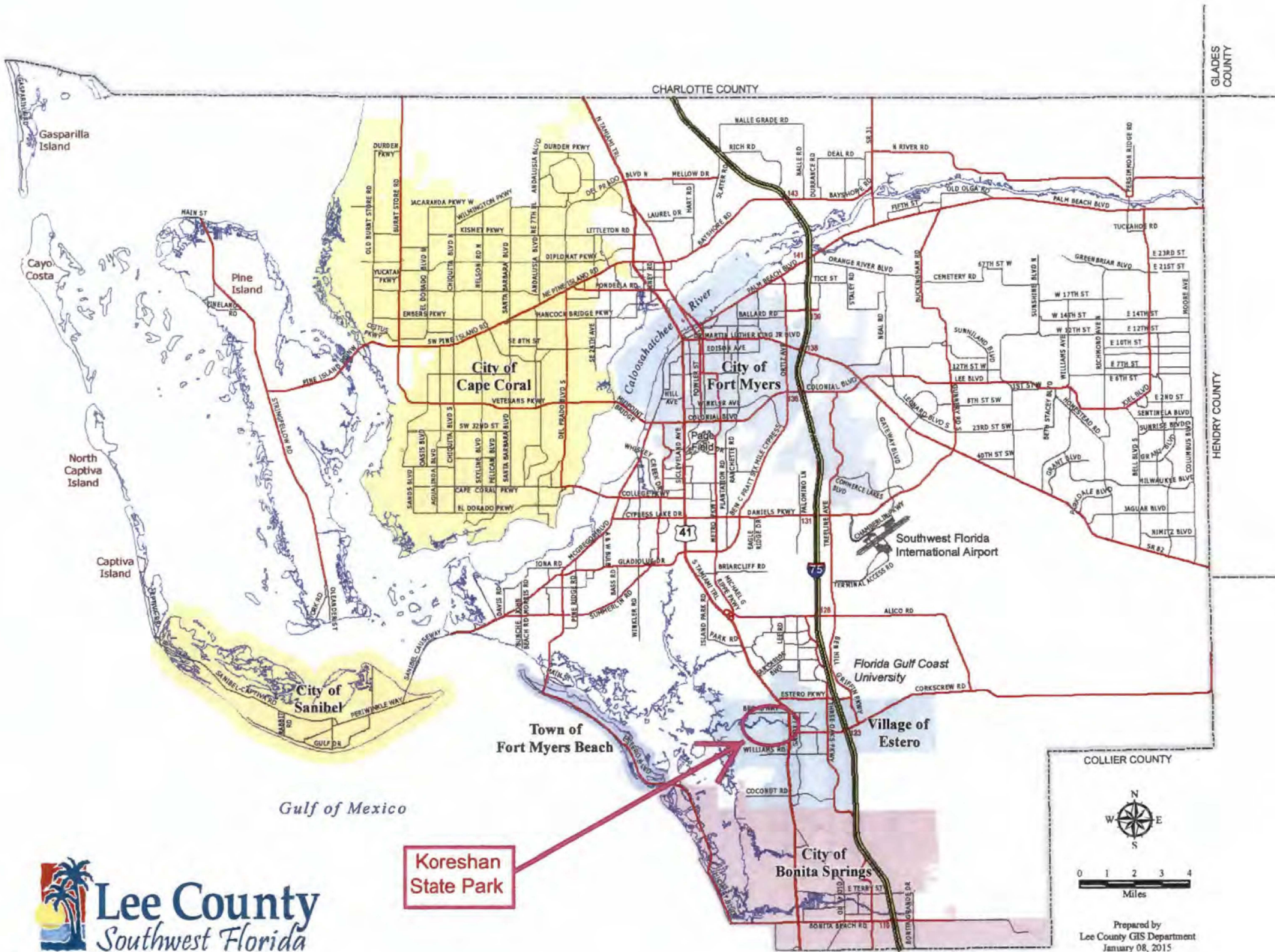
Project Name:

Moreshan State Park - ADA Kayak & Boat Launch Improvement

	TDC Request	Agency Match	Total
Personnel			
In-house Labor			\$0.00
Contract Labor			\$0.00
Contracted Services			
Janitorial Services			\$0.00
Landscape Maintenance			\$0.00
Travel			
Bridge Tickets & Passes (Transponders)			\$0.00
Communications			
Cellular Phones/Pagers			\$0.00
Radios			\$0.00
Repairs & Maintenance			
Building Maintenance			\$0.00
Maintenance Materials			\$0.00
Vehicle Maintenance			\$0.00
Equipment Maintenance			\$0.00
Equipment Repair Parts			\$0.00
Other Charges & Obligations			
Indirect Cost			\$0.00
Operating Supplies			
Fuel & Lubricants			\$0.00
Uniforms			\$0.00
Janitorial Supplies			\$0.00
Maintenance Supplies			\$0.00
Signage			\$0.00
Utilities			
Electric			\$0.00
Water & Sewer			\$0.00
Solid Waste Removal			\$0.00
Insurance			
Insurance Premiums			\$0.00
Equipment			
Equipment			\$0.00
Vehicles			\$0.00
Construction - Capital Projects Only			
Architect & Engineering Services			\$0.00
Permits			\$0.00
Site Preparation			\$0.00
Construction	\$363,945.00		\$363,945.00
Contingency			\$0.00
TOTAL	\$363,945.00	\$0.00	\$363,945.00

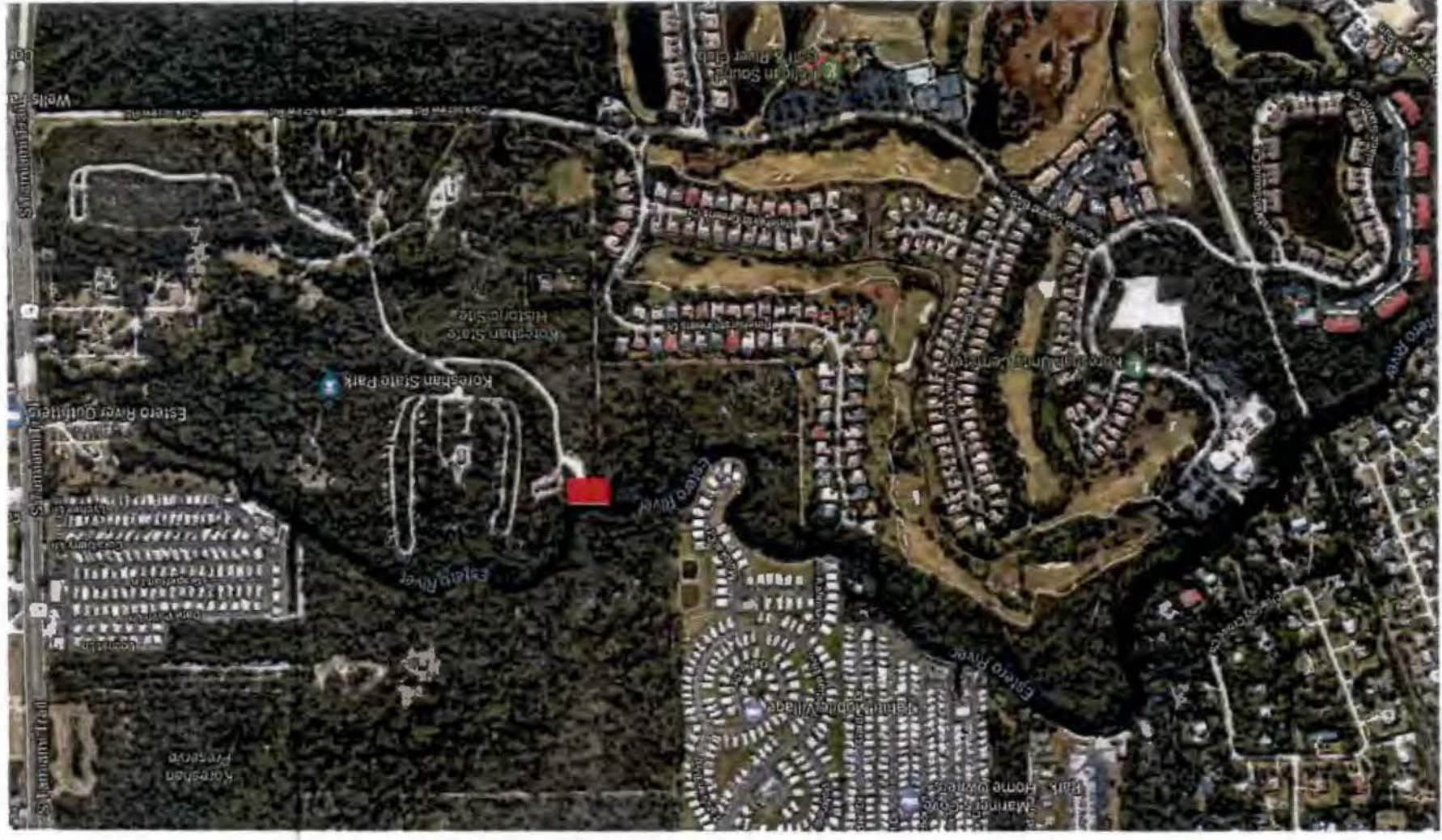
Notes: 1. Buildings must be open to the public in order to be eligible for funding.

2. Personnel/Equipment must be 100% assigned to the project in order to be 100% eligible for funding.



Prepared by
Lee County GIS Department
January 08, 2015

PROJECT AREA. =



CLARIFICATION on Permit expiration - provided March 22, 2021

Thomas, Wayne <Wayne.Thomas@FloridaDEP.gov>

Mon 3/22/2021 4:52 PM

Zach,

The SWFWMD Permit expires 2/7/2025. For the ACOE: The time limit for completing the work authorized ends on March 18, 2022 Regional General Permit (GP) SAJ-20 authorization is valid until March 27, 2023

Thank you, Wayne D. Thomas Department of Environmental Protection

Lozano, Zachary <Zachary.Lozano@dep.state.fl.us>

Mon 3/22/2021 4:31 PM

Inbox

Wayne-

See Nancy's questions below about permitting for the Koreshan Boat Ramp. If possible, please send whatever dates you have for expiration. I feel 5 years is not accurate and the time frame is way shorter.

Zach Lozano, Park Manager III

Florida Department of Environmental Protection
Division of Recreation and Parks
Koreshan State Park, Estero Bay Preserve State Park,
Old Mound Key Archaeological State Park
100 Corkscrew Rd.
Leesville, FL 33928
Zachary.Lozano@FloridaDEP.gov
Phone: 239-992-0311

Macphee, Nancy

Mon 3/22/2021 12:27 PM

Sent Items

Good morning Zach & Bryon,

Coastal Advisory Council workshop went well this morning.
You both have projects previously funded for design and permitting.

One CAC member asked how long are the permits good for?
Another CAC member replied permits are sometimes good for up to 5 years.

I will need to reflect those statements on the determination spreadsheet, but wanted to just reach out and double check. Please advise on permit expiration.

**TOURIST DEVELOPMENT TAX GRANT FUNDING AGREEMENT
BETWEEN
LEE COUNTY BOARD OF COUNTY COMMISSIONERS
AND
FLORIDA DEPARTMENT OF ENVIRONMENTAL PROTECTION
FOR
LOVERS KEY STATE PARK-BEACH MAINTENANCE (400965)**

THIS GRANT AGREEMENT is entered into by and between LEE COUNTY BOARD OF COUNTY COMMISSIONERS, a political subdivision and charter county of the State of Florida, hereinafter referred to as the “**COUNTY**” and the Florida Department of Environmental Protection, Division of Recreation and Parks, Lovers Key State Park, a state agency of the State of Florida hereinafter referred to as “**RECIPIENT**”, for funding provided pursuant to the **COUNTY’S** Tourist Development Plan and Florida Statutes Section 125.0104.

WITNESSETH:

WHEREAS, pursuant to Florida Statutes §125.0104 and Lee County Ordinances No. 13-14 and 16-18, and as may be further amended from time to time, Lee County collects tourist development tax; and

WHEREAS, the **COUNTY** has the authority to enter into this Agreement and distribute Tourist Development Tax funds in the amount and manner set forth in this Agreement; and

WHEREAS, the **COUNTY** and **RECIPIENT** acknowledge that the Tourist Development Tax may only be spent in accordance with state law, case law and the Tourist Development Plan adopted by Lee County; and

WHEREAS, the **COUNTY** approved the **RECIPIENT’S** request for funding under its Tourist Development Tax Plan for implementation of the following project:

AR
12/07/21R

NAME: LOVERS KEY STATE PARK-BEACH MAINTENANCE

NUMBER: 400965

NOW, THEREFORE, for and in consideration of the covenants and obligations set forth herein and for other good and valuable consideration, the receipt and sufficiency of which are hereby acknowledged, the Parties intending to be legally bound hereby agree to perform the duties described herein in this Agreement as follows:

1. SCOPE OF WORK

The **RECIPIENT** will perform the work necessary to complete the Project in accordance with the Project Request (attached). **RECIPIENT** may not make any major alterations, changes or substitutions to the Project without obtaining prior approval from the **COUNTY**. The Director of the Visitor and Convention Bureau or designee may approve minor changes, alterations and/or substitutions. **RECIPIENT** shall be solely responsible for managing and controlling the Project, including the hiring and supervising of any consultants or contractors it engages.

- 1.1 The parties agree that time is of the essence in the performance of each obligation under this Agreement.
- 1.2 The parties acknowledge that the Project is for *maintenance of Lovers Key State Park Beach*.

2. CONTRACT PERIOD

This Agreement is effective as of October 1, 2021 (the "Effective Date") and shall continue until the earlier occurs (a) September 30, 2022 (the "Expiration Date") or (b) the date on which either Party terminates this Agreement (the "Termination Date"). The **RECIPIENT** shall not be eligible for reimbursement for any work that is commenced, or costs that are incurred, prior to the effective date of this Agreement.

3. FUNDING

This Agreement is a cost reimbursement Agreement. The parties agree that the total cost of the Project will be Sixty two thousand dollars (\$62,000.00). The **COUNTY** will reimburse the **RECIPIENT** for an amount not to exceed Sixty two thousand dollars and no cents (\$62,000.00) during the **COUNTY'S** fiscal year 2021/2022.

- 3.1 The **RECIPIENT** shall pay Project costs prior to requesting reimbursement from the **COUNTY**. The **COUNTY** shall reimburse the **RECIPIENT** for the **COUNTY'S** share of allowable Project costs in accordance with the Project Budget set forth in the Project Plan.
- 3.2 To receive payment, the **RECIPIENT** shall submit request for reimbursement and supporting documentation to the **COUNTY** within forty-five (45) days after completion of the Project. The invoices must describe the services performed, show proof of payment, and all supporting documentation related to the expenses. The **COUNTY** will forward the documentation to the Clerk of Courts Office for payment. Any other additional documentation requested by the Clerk shall be provided. At no point in time will the **COUNTY'S** reimbursement amount under this Agreement exceed Sixty two thousand dollars. (\$62,000.00)
- 3.3 The **RECIPIENT** may contract with consultant(s), contractor(s) or both to accomplish the Project without approval of the **COUNTY**.
- 3.4 The parties acknowledge that the Project was approved for funding by the **COUNTY** based upon the benefits expected to be achieved by the Project. The parties also acknowledge that the **RECIPIENT** is solely responsible for implementing the Project in such a manner that the expected benefits are achieved. If at any point during the progression of the Project, the **COUNTY** determines that it is likely that the Project will not be completed, the **COUNTY** shall provide the **RECIPIENT** with fifteen (15) days advance written notice that the **COUNTY** shall withhold payments to the **RECIPIENT** until such time as the **RECIPIENT** demonstrates that the Project shall reach completion, to provide the **RECIPIENT** with an opportunity to cure the deficiencies.
- 3.5 **RECIPIENT** shall provide the **COUNTY** evidence of substantial activity within six (6) months of the beginning of the fiscal year the grant funding is awarded.
- 3.6 Unspent or unencumbered funds remaining at the end of the fiscal year may not be carried over into the next fiscal year unless approved by the Board of County Commissioners.
- 3.7 In the event any dispute or disagreement arises during the course of the Project, including whether expenses are reimbursable under accordance with the Project Request, the **RECIPIENT** is under a duty to seek clarification and resolution of any issue, discrepancy, or dispute by providing the details and basis of the dispute to the Director, Visitor and Convention Bureau, no later than ten (10) days after the precipitating event. If not resolved by the Director, Visitor and Convention Bureau, within ten (10) days of receipt of notice the dispute will be forwarded to the Assistant County

Manager assigned to the Visitor and Convention Bureau. The Assistant County Manager in consultation with the County Attorney's Office will issue the COUNTY'S final determination. The RECIPIENT'S continuation of the Project work as required under this subparagraph shall not constitute a waiver of any legal remedy available to the RECIPIENT concerning the dispute.

4. COMPLETION DATES

The **RECIPIENT** shall commence and complete the Project and meet the deadlines in accordance with the Project Schedule set forth in the Project Plan. In the event of hurricanes, tornado, floods, acts of God, acts of war, or other such catastrophes, or other man-made emergencies such as labor strikes or riots, which are beyond the control of the **RECIPIENT**, the **RECIPIENT'S** obligation to meet the time frames provided in this Agreement shall be suspended for the period of time the condition continues to exist. During such suspension, this Agreement shall remain in effect. When the **RECIPIENT** is able to resume performance of its obligations under this Agreement, in whole or in part, it shall immediately give the **COUNTY** written notice to that effect and shall resume performance no later than two (2) working days after the notice is delivered. The suspension of the **RECIPIENT'S** obligations provided for in this paragraph shall be the **RECIPIENT'S** sole remedy for the delays set forth herein.

5. REPAYMENT

- 5.1 Notwithstanding anything in this Agreement to the contrary, **COUNTY** has an absolute right to recoup Grant Funds. **COUNTY** may refuse to reimburse **RECIPIENT** for any cost if **COUNTY** determines, in its sole discretion, that such cost was not incurred in compliance with the terms of this Agreement. **COUNTY** may demand return of the Grant Funds if **COUNTY** terminates this Agreement.
- 5.2 In the event the **RECIPIENT** is obligated to repay the **COUNTY** under any paragraph of this Agreement, the **RECIPIENT** shall repay the **COUNTY** within a reasonable time, as determined by the **COUNTY** in its sole discretion.
- 5.3 The **RECIPIENT** shall pay attorney's fees and costs incurred by the **COUNTY**, including appeals, as a result of the **RECIPIENT'S** failure to repay the **COUNTY** as required by this Agreement.
- 5.4 This Repayment Paragraph, including all subparagraphs, shall survive the expiration or termination of this Agreement.

6. PROJECT RECORDS

The **RECIPIENT** shall maintain accurate records of all expenditures, and **RECIPIENT** shall make records related to this Agreement available at all reasonable time for inspection, review or audit by the **COUNTY**.

Records shall be kept for a period of at least three (3) years following the end of the funding period. Each party shall comply with Chapter 119, F.S., the Public Records Act, including allowing public access to the Project documents and materials made or received by either party.

Should either party assert any exemption to the requirements of Chapter 119, F.S., the burden of establishing such exemption, by way of injunctive or other relief as provided by law, shall be upon the asserting party. This paragraph shall survive the expiration or termination of this Agreement.

7. REPORTS

7.1 **RECIPIENT** shall provide quarterly status updates to the **COUNTY** describing the progress of the Project, adherence to the Project Schedule and any developments affecting the Project. The **RECIPIENT** shall promptly advise the **COUNTY** of issues that arise that may impact the successful and timely completion of the Project. Quarterly reports shall be submitted to the **COUNTY'S** Manager, Visitor and Convention Bureau no later than forty-five (45) days following the completion of the quarterly reporting period.

7.2 **RECIPIENT** will submit quarterly expenditure reports to the **COUNTY**. Sufficient supporting invoices and documentation to support pre-audit and post-audit review must accompany expenditure reports. The Clerk of the Circuit Court, who may seek additional information, as the circumstances require, shall determine the sufficiency of said documentation.

7.3 The **RECIPIENT** shall provide the reports and documents referenced in this paragraph at no cost to the **COUNTY**.

8. LIABILITY AND INDEMNIFICATION

8.1 To the extent permitted by Florida law, the **RECIPIENT** assumes all risks relating to the Project and agrees to be solely liable for, and to indemnify and hold the **COUNTY** harmless from all claims, loss, damage and other expenses, including attorney's fees and costs and attorneys' fees and cost on appeal, arising from the project.

8.2 The **COUNTY** shall not be liable to any person, firm or corporation that contracts with the **RECIPIENT** to provide goods and services

associated with the project conducted with the funding. Nor shall the **COUNTY** be liable to any person, firm or corporation for claims against the **RECIPIENT** or debts incurred by the **RECIPIENT**.

8.3 This Liability and Indemnification paragraph, including all subparagraphs, shall not be construed as a waiver of the **RECIPIENT'S** sovereign immunity or an extension of the **RECIPIENT'S** liability beyond the limits established in Section 768.28, F.S., nor be construed as consent by the **RECIPIENT** to be sued by third parties in any manner arising out of this Agreement.

8.4 Nothing in this Agreement shall be interpreted as a waiver of the **COUNTY'S** sovereign immunity or an extension of its liability beyond the limits established in Section 768.28, F.S., nor be construed as consent by the **COUNTY** to be sued by third parties in any manner arising out of this Agreement. This Liability and Indemnification paragraph, including all subparagraphs, shall survive the expiration or termination of this Agreement

9. TERMINATION

9.1 The **COUNTY**, by written notice to **RECIPIENT** may terminate this Agreement immediately and cancel any unpaid disbursement if the **COUNTY** determines, in its sole discretion, that:

- a) **RECIPIENT** used any portion of the grant funds for purposes not included in the terms of this Agreement.
- b) **RECIPIENT** is not making satisfactory progress toward the completion of the Project or has violated the terms of this Agreement.

Upon receipt of the written notice, **RECIPIENT** shall not provide any further deliverables after receiving the notice of termination. Within 30 days after receiving written notice from the **COUNTY** of such termination, the **RECIPIENT** shall return the funds reimbursed. The **COUNTY** will have no liability to pay the **RECIPIENT** any further sums in relation to this Agreement.

9.2 **RECIPIENT** may terminate this Agreement for inability to obtain all permits and local government approvals necessary to complete the Project or inability to complete the Project. To effect termination, **RECIPIENT** shall provide **COUNTY** with written "Notice of Termination". **RECIPIENT** shall refund all grant funds provided under this Agreement to the **COUNTY** for the Project within 30 days of termination.

10. LAW COMPLIANCE

The **RECIPIENT** shall comply with all applicable federal, state and local laws, rules, regulations and guidelines related to performance under this Agreement.

11. ASSIGNMENT

Except as otherwise provided in this Agreement, no party may assign any of its rights or delegate any of its obligations under this Agreement, including any operation or maintenance duties related to the Project, without the prior written consent of the other party. Any attempted assignment in violation of this paragraph is void. This paragraph shall survive the expiration or termination of this Agreement.

12. GOVERNING LAW

The laws of the State of Florida shall govern the construction, enforcement, and interpretation of this Agreement, regardless of and without reference to whether any applicable conflicts of laws principles may point to the application of the laws of another jurisdiction. The Parties expressly consent to exclusive jurisdiction and venue in any state court located in Lee County, Florida, and waive any defense of forum non conveniens, lack of personal jurisdiction, or like defense.

13. SEVERABILITY

If any paragraph or paragraphs of this Agreement shall be held to be invalid, illegal, or unenforceable, the validity, legality and enforceability of the remaining paragraphs shall not in any way be effected or impaired thereby. Notwithstanding the above, if a paragraph or paragraphs of this Agreement setting forth the requirements or expectations of the benefit of promoting tourism resulting from the Project is held to be invalid, illegal or unenforceable during the term of this Agreement, this Agreement shall terminate in accordance with the Repayment paragraph. This paragraph shall survive the expiration or termination of this Agreement.

14. COUNTERPARTS

The parties may execute this Agreement, and any amendments related to this Agreement, each of which constitutes an original, and all of which, collectively, constitute only one Agreement. The signatures of all of the parties need not appear on the same counterpart.

15. MISCELLANEOUS

- 15.1 The **RECIPIENT** covenants to the **COUNTY** that it has lawful authority to enter into this Agreement and has authorized the execution of this agreement by its authorized representative.
- 15.2 This Agreement embodies the entire agreement of the Parties with respect to the subject matter hereof. There are no provisions, terms, conditions, or obligations other than those contained in this Agreement; and this Agreement supersedes all previous communications, representations, or agreements, either verbal or written, between the Parties. If a court of competent jurisdiction voids or holds unenforceable any provision of this Agreement, then that provision shall be enforced only to the extent that it is not in violation of law or is not otherwise unenforceable, and all other provisions shall remain in full force and effect.
- 15.3 This Agreement may not be modified, amended or extended orally. This Agreement may only be amended by written agreement executed by the governing bodies of both parties.

16. CONTACT INFORMATION

COUNTY

Lee County Board of County Commissioners
Director, Visitor and Convention Bureau
2201 Second Street, Suite 600
Fort Myers, FL 33901

RECIPIENT

FL DEP - DIVISION OF RECREATION & PARKS
Manager, Lovers Key State Park
8700 Estero Blvd
Fort Myers Beach, FL 33931

The Parties' respective contact and notice information is set forth in the immediately preceding paragraph, and may be subject to change at the Parties' discretion. If the contact information changes, the Party making such change will notify the other Party in writing. When the term "written notice" is used to specify a notice requirement herein, said notice shall be deemed to have been given (i) when personally delivered; (ii) when transmitted by email, if the sender on the same day sends a confirming copy of such notice by certified or registered mail; (iii) the next business day following the day on which the same has been delivered prepaid to a recognized overnight delivery service; or (iv) the third business day following the day on which the same is sent by certified or registered mail, postage prepaid, with return receipt.

IN WITNESS WHEREOF, and in consideration of the mutual covenants set forth above, the Parties, through their duly-authorized representatives, sign this Agreement and represent and warrant that they understand the Agreement as of this 9th day of December, 2021.

ATTEST:
LINDA DOGGETT, CLERK

BY: 
DEPUTY CLERK



BOARD OF COUNTY COMMISSIONERS
LEE COUNTY, FLORIDA

BY: 

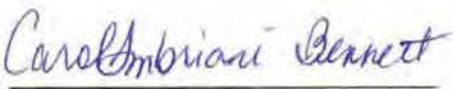
Cecil L. Pendergrass, Chairman
Lee County Board of County Commissioners
District 2

APPROVED AS TO FORM FOR THE
RELIANCE OF LEE COUNTY ONLY

BY: 
OFFICE OF THE COUNTY ATTORNEY

ATTEST:

FLORIDA DEPARTMENT OF
ENVIRONMENTAL PROTECTION, DIVISION
OF RECREATION AND PARKS, Lovers Key
State Park

BY: 

BY: 

The attached document has been approved by the Board of County Commissioners. Please review the instructions below and forward to the appropriate office when complete.

Meeting Date:	12/07/2021
Agenda Item #:	A8
Agenda Item Title:	Approve Interlocal Agreements with Beach and Shoreline Funding Recipients
Attachment(s):	(17) Interlocal Agreement

Department	Instructions
County Attorney	Please review the attached document(s) at the BLUE sticker. If you have any questions concerning the document(s), contact the originating department. After completion, forward to the CHAIR/VICE CHAIR for signature.
Chair/Vice Chair	Sign the attached document(s) at the RED sticker. After completion, forward to the MINUTES OFFICE for execution.
Minutes Office	Execute the attached document(s). After document(s) are completely executed, return the remaining originals to Laurel Chick, County Administration for distribution.

12/8/21 CA

Date out from Administration: 12/07/21
Return to Dept. Novus

2021 DEC -7 AM 11:42
RECEIVED BY
LEE CO. ATTORNEY

2021 DEC -8 AM 8:29

RECEIVED
MINUTES OFFICE

AGENDA ITEM REPORT

DATE: December 7, 2021
DEPARTMENT: Visitor and Convention Bureau
REQUESTER: Tamara Pigott
TITLE: Approve Interlocal Agreements with Beach and Shoreline Funding Recipients

I. MOTION REQUESTED

Authorize Chair to execute interlocal agreements on behalf of Board of County Commissioners between Lee County and the Barrier Island Parks Society, Captiva Erosion Prevention District, City of Cape Coral, City of Fort Myers, Town of Fort Myers Beach, City of Sanibel and State of Florida DEP for seventeen (17) separate Lee County Beach & Shoreline Projects.

II. ITEM SUMMARY

Finalizes Interlocal Agreements between Lee County and the Barrier Island Parks Society, Captiva Erosion Prevention District, City of Cape Coral, City of Fort Myers, Town of Fort Myers Beach, City of Sanibel and State of Florida DEP for seventeen (17) separate Lee County Beach & Shoreline Projects receiving Tourist Development Tax funding in the total amount of \$4,540,684.

III. BACKGROUND AND IMPLICATIONS OF ACTION

A) Board Action and Other History

The Lee County VCB administers the Tourist Development Tax funding for Beach and Shoreline projects. In May, 2021, the Tourist Development Council recommended tourist tax funding for the seventeen projects listed below. The Board of County Commissioners approved this funding with the adoption of the FY 2021/2022 budget.

B) Policy Issues

According to Florida State Statute 125.0104(5)(a)5, tourist development tax funds shall be used to finance beach park facilities or beach improvement, maintenance, renourishment, restoration and erosion control to which there is public access as those uses relate to the physical preservation of the beach, shoreline, etc.

C) BoCC Goals

Strategic Priority - Tourism

D) Analysis

The attached interlocal agreements authorize entities to perform the specific work and Lee County VCB to reimburse expenses incurred. The agencies/projects are:

Agency	Project #/ Name	Amount
Barrier Island Park Society	1710/Gasparilla Island Walking Trail Maint.	\$ 40,175
Barrier Island Park Society	0964/Port Boca Grande Beach Maintenance	\$11,896
Captiva Erosion Prevention Dist.	1911/Beach Park Maintenance	\$ 127,500
Captiva Erosion Prevention Dist.	0963/Alison Hagerup Parking Lot Upgrades	\$231,000
City of Cape Coral	1926/Beach Park Facility Maintenance	\$ 138,000
City of Fort Myers	3278/Legacy Island Stabilization	\$ 279,180
City of Sanibel	1656/Facility Beach Maintenance	\$1,605,100
City of Sanibel	1747/Beach Erosion Monitoring	\$ 40,000
City of Sanibel	1708/Bowmans Bch Bridge Replacement	\$ 225,000
City of Sanibel	3284/Changing Rm Rehab @ Bowmans Pk	\$ 200,000
Town of Fort Myers Beach	1895/Beach & Shoreline Maintenance	\$ 862,875

Town of Fort Myers Beach	3278/Beach Erosion Monitoring	\$ 32,013
Town of Fort Myers Beach	3307/Estero Island Renourishment	\$40,000
Town of Fort Myers Beach	0962/Beach Access Restroom @ Palm Ave	\$ 95,000
FL DEP/Gasparilla State Park	0958/Gasparilla Beach Shade Structure	\$ 187,000
FL DEP/Koreshan State Park	0959/Koreshan ADA Kayak & Boat Launch	\$ 363,945
FL DEP/Lovers Key State Park	0965/Lovers Key Beach Maintenance	\$62,000
	Total	\$4,540,684

E) Options

IV. **FINANCIAL INFORMATION**

A)	Current year dollar amount of item:	\$4,540,684
B)	Is this item approved in the current budget?	Yes
C)	Is this a revenue or expense item?	Expense
D)	Is this Discretionary or Mandatory?	Discretionary
E)	Will this item impact future budgets? If yes, please include reasons in III(D) above.	No
F)	Fund: Tourist Development Tax; Major Maintenance Program: VCB Project: Account Strings: 40xxx30101.508150	
G)	Fund Type?	Other: Tourist Development Tax
H)	Comments:	

V. **RECOMMENDATION**

Approve

VI. **TIMING/IMPLEMENTATION**

VII. **FOLLOW UP**

ATTACHMENTS:

Description	Upload Date	Type
FY2021-22 TDC Beach&Shoreline Funding Allocations	11/9/2021	Backup Material
Minutes from the May, 2021 TDC Meeting	11/9/2021	Backup Material
Barrier Island Park Society \$40,175	11/9/2021	Interlocal Agreement
Barrier Island Park Society \$11,896	11/9/2021	Interlocal Agreement
Captiva Erosion Prevention District \$127,500	11/16/2021	Interlocal Agreement
Captiva Erosion Prevention District \$231,000	11/16/2021	Interlocal Agreement
City of Cape Coral \$138,000	11/9/2021	Interlocal Agreement
City of Fort Myers \$279,180	11/9/2021	Interlocal Agreement
City of Sanibel \$1,605,100	11/9/2021	Interlocal Agreement
City of Sanibel \$40,000	11/9/2021	Interlocal Agreement
City of Sanibel \$225,000	11/9/2021	Interlocal Agreement
City of Sanibel \$200,000	11/9/2021	Interlocal Agreement

Town of Fort Myers Beach \$862,875	11/9/2021	Interlocal Agreement
Town of Fort Myers Beach \$32,013	11/9/2021	Interlocal Agreement
Town of Fort Myers Beach \$40,000	11/9/2021	Interlocal Agreement
Town of Fort Myers Beach \$95,000	11/9/2021	Interlocal Agreement
FL DEP/Gasparilla State Park \$187,000	11/9/2021	Interlocal Agreement
FL DEP/Koreshan State Park \$363,945	11/9/2021	Interlocal Agreement
FL DEP/Lovers Key State Park \$62,000	11/9/2021	Interlocal Agreement

REVIEWERS:

Department	Reviewer	Action	Date
Visitor and Convention Bureau	Pigott, Tamara	Approved	11/23/2021 - 12:34 PM
Budget Services	Guttery, Angela	Approved	11/24/2021 - 7:50 AM
Budget Services	Winton, Peter	Approved	11/24/2021 - 8:47 AM
County Attorney	Jacob, Michael D.	Approved	11/24/2021 - 9:28 AM
County Manager	Salyer, Glen	Approved	11/29/2021 - 9:27 AM