

Hurricane Ian Debris Collection

Board of Lee County Commissioners

Special Workshop

October 26, 2022
1:30 PM



Lee County
Southwest Florida



AGENDA

- Progress & Accomplishments
- Collection & Disposal Process
- Jurisdictions & Agencies
- FEMA Reimbursement
- Next Phases of Collection
- Communications Plan
- Citizen Tools
- BoCC Discussion

Progress & Accomplishments

9/28/2022

Wednesday



LANDFALL

10/3/2022

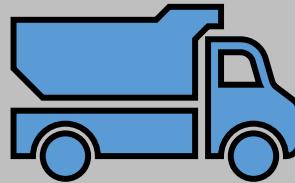
Monday



**FIRST PUSH
COMPLETE**

10/04/2022

Tuesday



**FIRST PASS
BEGAN**

10/22/2022

Saturday



Unincorporated Lee
**1 MILLION
CUBIC YDS
COLLECTED**

11/05/2022

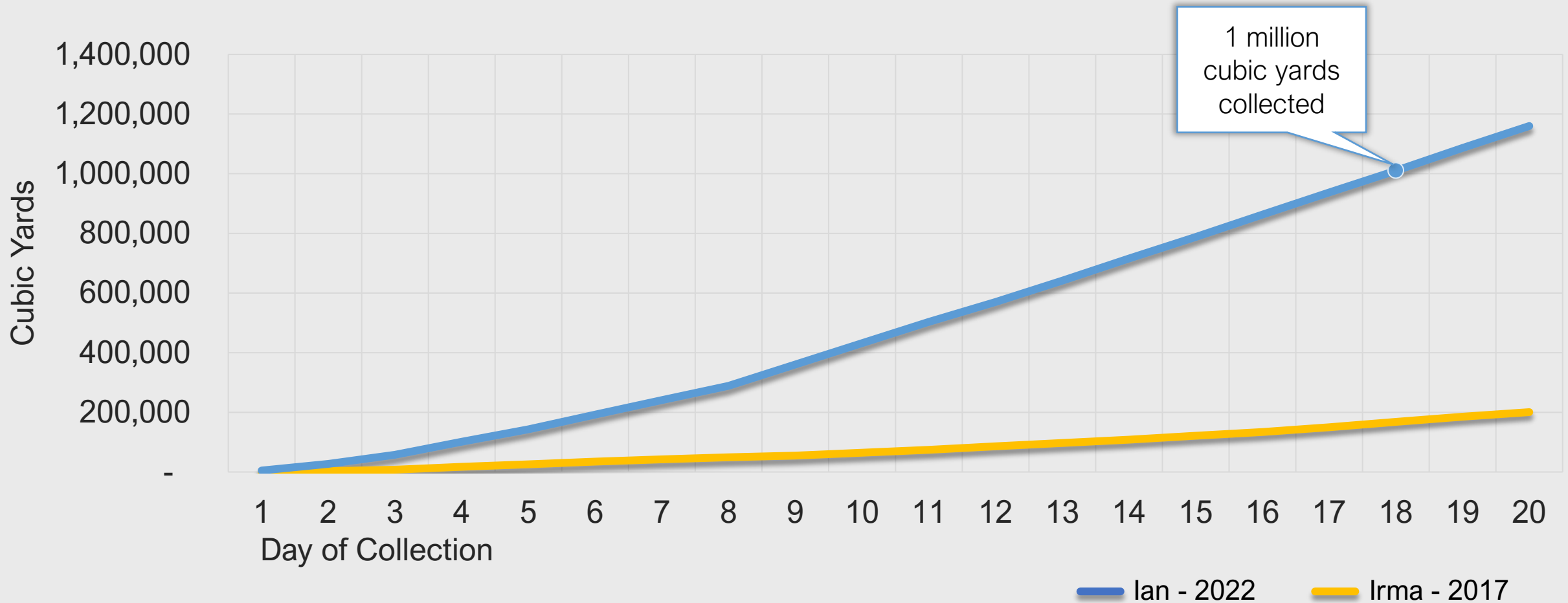
Saturday



**PROJECTION:
REACH IRMA TOTAL
COLLECTION**

First pass: 1,035 road miles >> Drive from Lee County to Cincinnati, OH

Cumulative Debris Collection Comparisons Unincorporated Lee County: Irma (2017) to Ian (2022)



Note:
Day 1 Irma Debris Collection: 9/16/2017
Day 1 Ian Debris Collection: 10/05/2022



DEBRIS

WHAT WE ENCOUNTERED

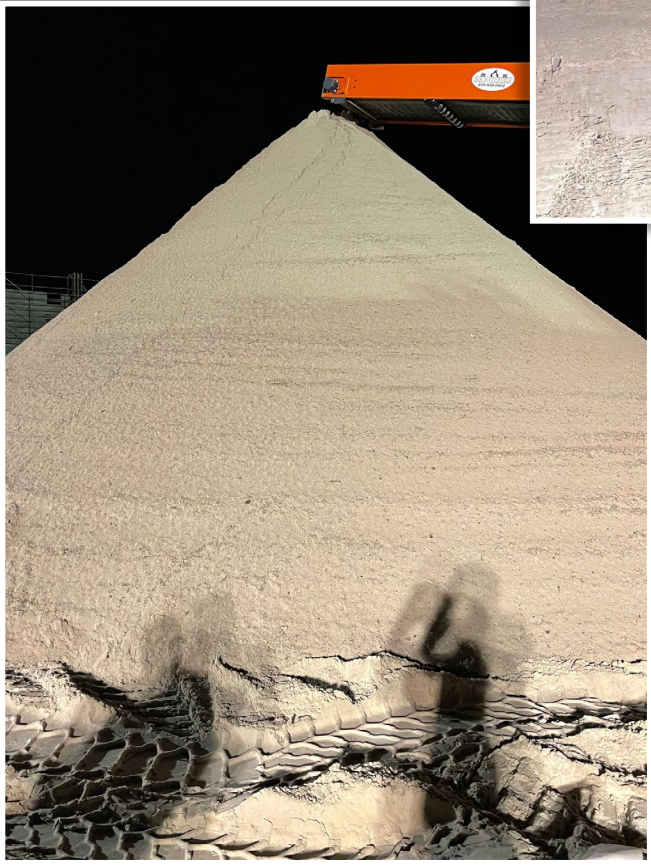
PICKUP



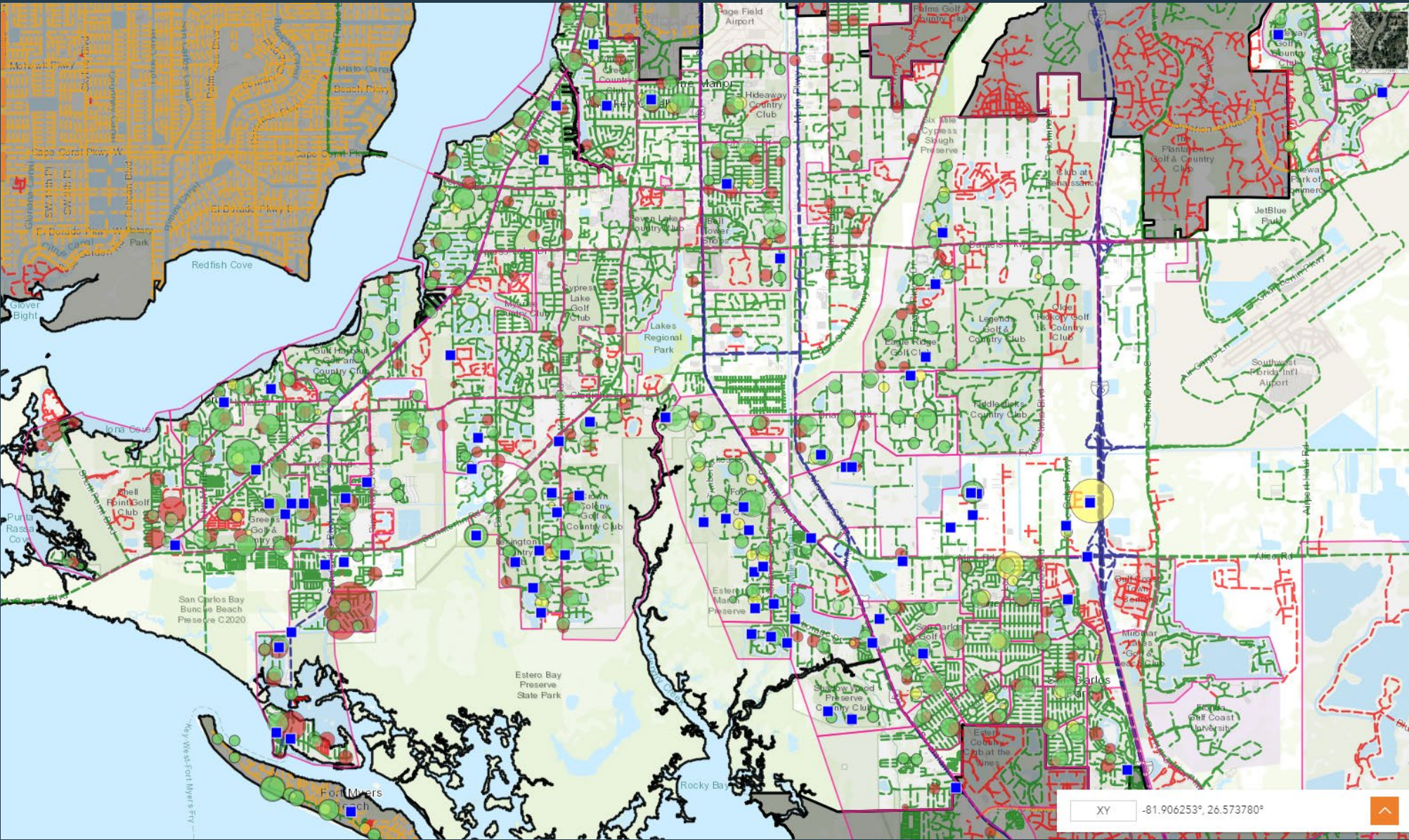
STAGING



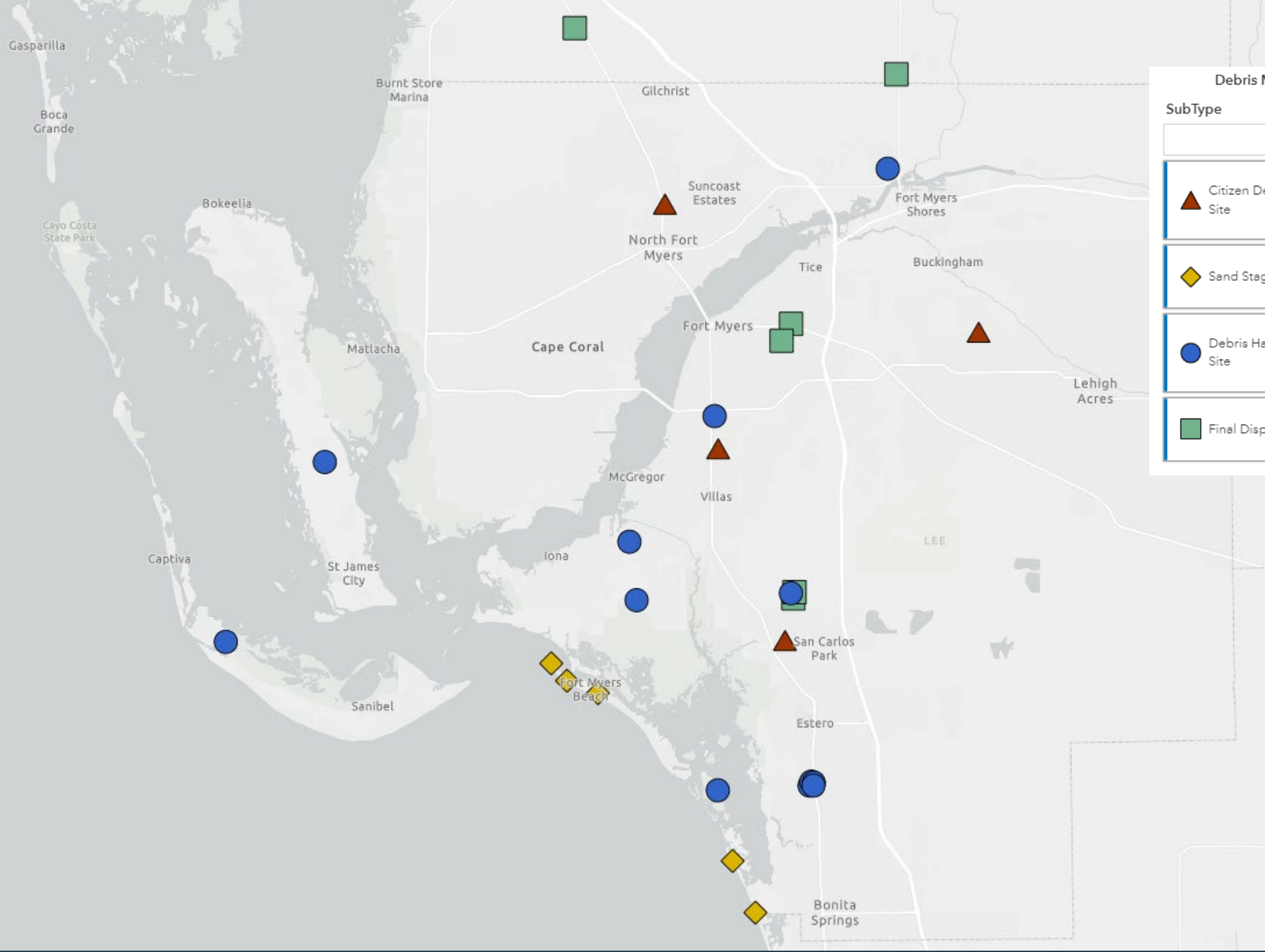
SAND CLEAN UP



DEBRIS MANAGEMENT SYSTEM







DEBRIS SITES DASHBOARD



Debris Management Sites

SubType

Show All

-  Citizen Debris Drop-Off Site
-  Sand Staging Site
-  Debris Hauler Drop-Off Site
-  Final Disposal Site

INITIAL DAMAGE ASSESSMENT

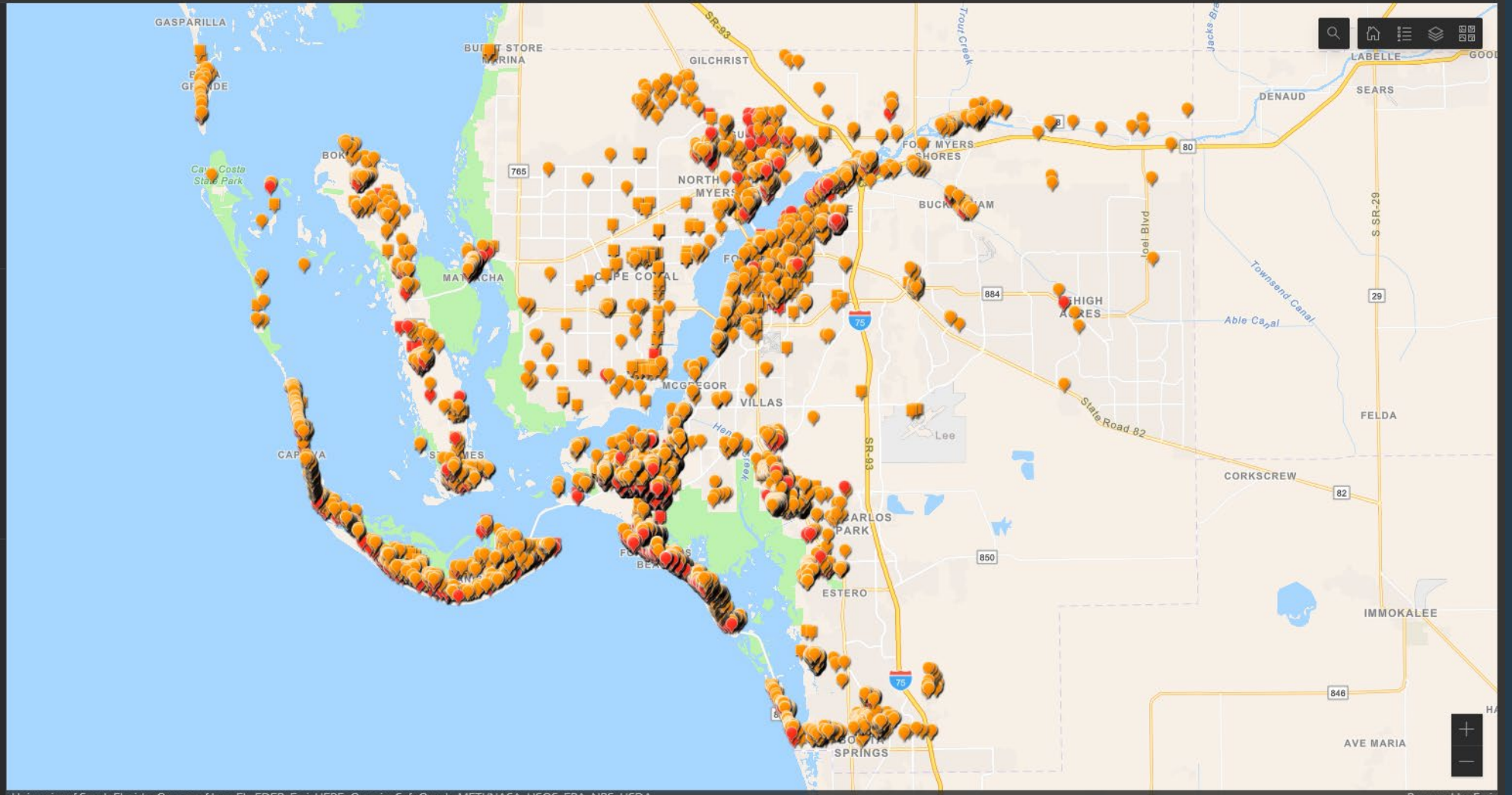
Lee County Initial Damage Assessments

Damage Category
All

Destroyed
5,339

Major
14,201

Total
19,540



Jurisdictions - Debris Projections

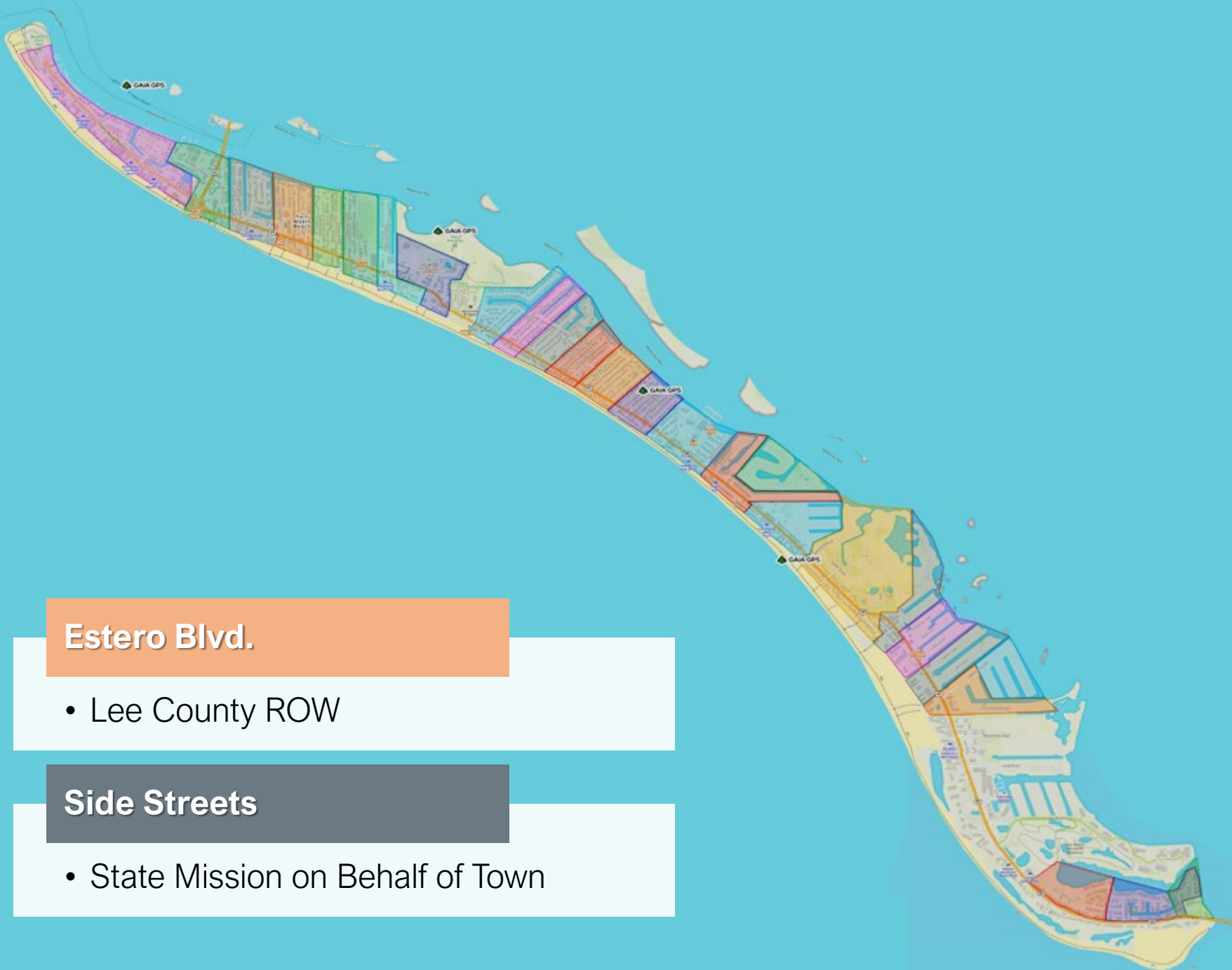


ESTIMATE: TOTAL DEBRIS COUNTY-WIDE

9 - 10 MILLION CUBIC YARDS

Jurisdiction	Total Debris Estimate	Debris Collection Activity
Unincorporated Lee County	3.5 million	1,152,762
Bonita Springs	275,000	135,000
Cape Coral	2 million	589,025
Village of Estero	150,000	80,000
Fort Myers	600,000	320,000
Town of Fort Myers Beach	2.5 million	202,000
Sanibel	600,000	110,000

FORT MYERS BEACH



Estero Blvd.

- Lee County ROW

Side Streets

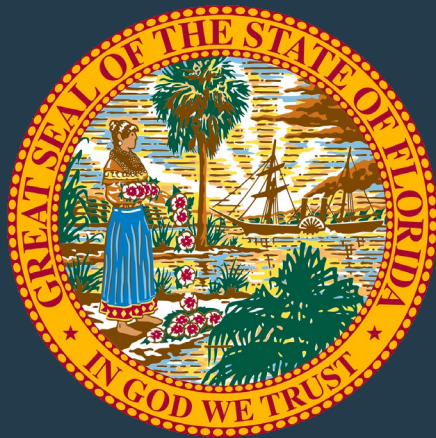
- State Mission on Behalf of Town

Agency Roles for Debris Collection



AGENCY	DEBRIS TYPE									
	ROW Veg	ROW C&D	Appliances	Sand	Registered Property	PPDR	CPDR	Waterway C&D / Veg	Pollution	HHCW
Cities	✓	✓	✓	✓				✓		✓
County	✓	✓	✓	✓				✓		✓
FDEM					✓	✓	✓	↕		✓
FDEP									✓	
FWC					✓					
SFWMD								✓		
Federal									✓	

STATE MISSIONS



REGISTERED PROPERTY

- Marine Vessels
- Automobiles
- RV/Trailers/Motorcycles
- Containers

WATERWAY DEBRIS

- Vegetative
- Construction & Demolition
- Select Watercourses

LAND DEBRIS

- Private Property Debris Removal
- Commercial Property Debris Removal

FEMA Reimbursement



FEMA

Debris Monitoring

- Rigorous Documentation To Meet Strenuous Federal/State Requirements
- Financial Recordkeeping To Facilitate Reimbursement
- Development Of Audit File

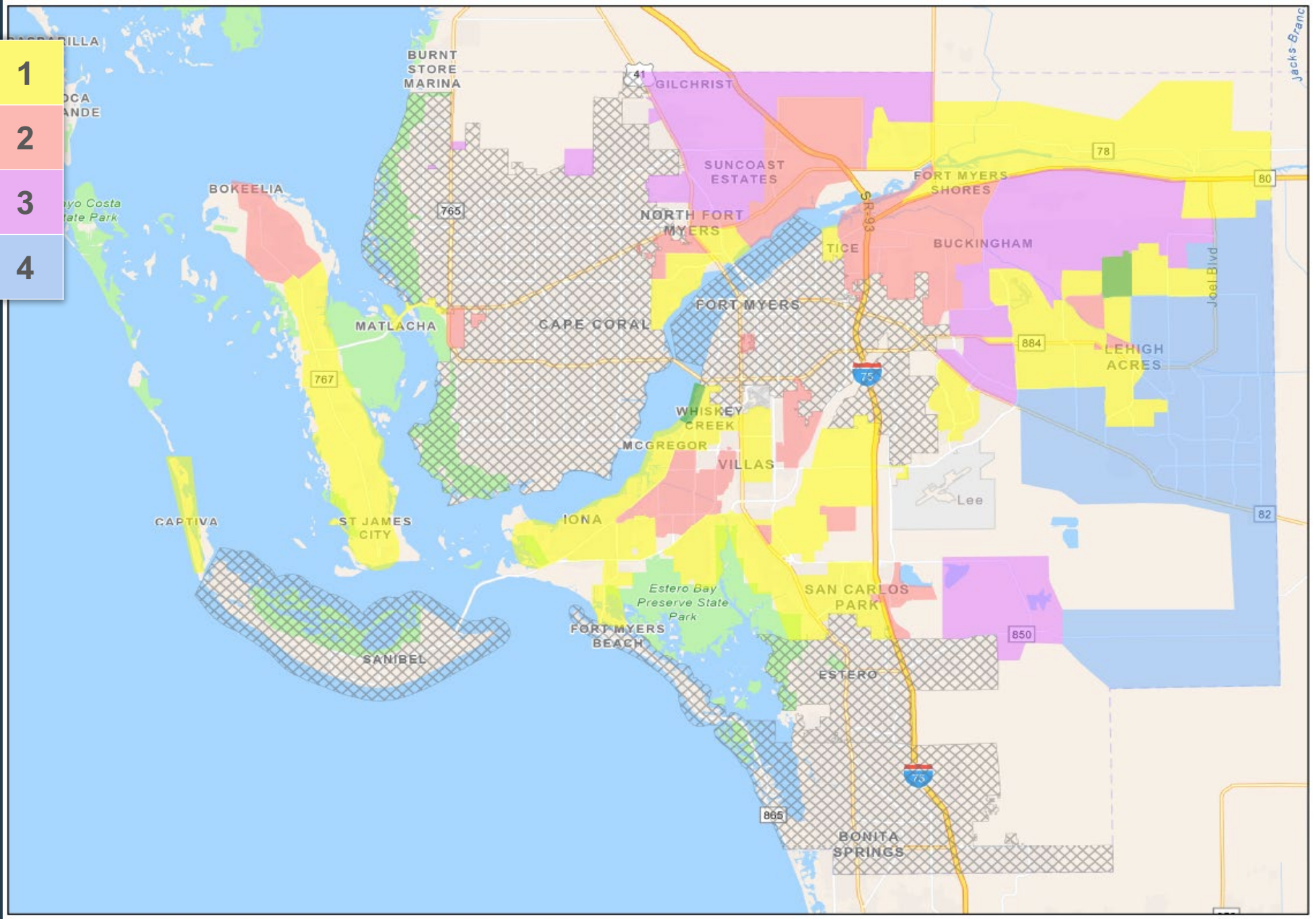
Private Property Debris Removal (PPDR) Commercial Property Debris Removal (CPDR)

- Programs Reserved for Most Extreme Disaster / Damages
- Typically PPDR Programs Are Undertaken 3-6 Months Post-event
- State Of Florida & FEMA Region IV have taken a Forward-leaning Posture on PPDR
- Even with FDEM Program Delivery, Certain Requirements Must be Met
 - Right-of-entry
 - Hold Harmless
 - Subrogation Of Insurance
 - Proof Of Legal Authority
 - Documentation Of Threat On Private Property
 - Field Monitoring

WHAT TO EXPECT

COLLECTION PHASES

- 1
- 2
- 3
- 4



COMMUNICATION PLAN



GOAL

ONGOING MESSAGING

Evolving message using story map	Community engagement & crowd sourcing	Current frequently asked questions	Up-to-date statistics	Updates using Graphics & videos
----------------------------------	---------------------------------------	------------------------------------	-----------------------	---------------------------------

PUBLIC EDUCATION CAMPAIGN

Best practices	Solid waste terminology	Debris Types	Lee County Solid Waste coverage areas
----------------	-------------------------	--------------	---------------------------------------

MULTI-PLATFORM APPROACH

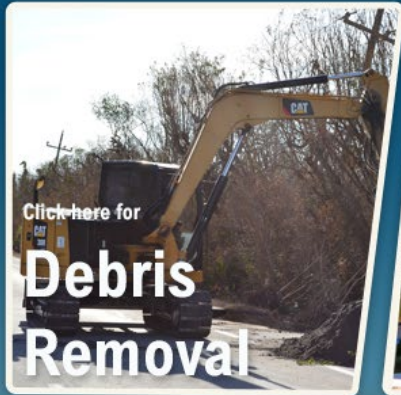
Traditional media, outdoor advertising, e-newsletters, social media, traditional & digital advertising

RECOVERY RESOURCES

FEMA reimbursement, marine debris, etc.

COMMUNICATION PLAN

 **Hurricane Ian Recovery Resources**
Click here for most up-to-date information



[Home](#) » [Hurricane Guide](#) » [Storm Updates](#) » Debris Removal

Hurricane Ian Debris

Font Size: [+](#) [-](#) [+](#) [Share & Bookmark](#) [\[+\]](#) [Feedback](#) [Print](#)

 View current Hurricane Ian [Debris Removal Information Dashboard](#) for unincorporated Lee County.

Lee County has more than 1,000 people working on debris and waste recovery. About 200 local residents, many who lost their jobs due to the hurricane, have found new employment as debris monitors. The county's contracted waste haulers, Waste Pro and WM (Waste Management), have 285 drivers, assistants, and administrative workers ensuring that regular garbage is pulled from curbs and businesses. Additionally, there are 325 people working in private construction and demolition recycling businesses - all aimed at helping the county recover.

Lee County reached an important milestone during the weekend by collecting 1 million cubic yards of debris from Hurricane Ian. As of



- ✓ Enhance current messaging
- ✓ Continuously evolve
- ✓ Update community

Citizen Tools

Webpage: www.leegov.com/hurricane/storm



Lee County
Southwest Florida

TRASH, DEBRIS, & RECYCLING COLLECTION UPDATE!

What we are picking up:
Place these in clear separate piles



Separate your Storm Debris

- Create separate piles for four types of debris
- Keep piles away from obstacles such as mailboxes
- Do not bag or put storm debris in containers



Hurricane Clean Up - Separating Your Debris

Debris should be placed curbside, without blocking the roadway or storm drains.

NO PICKUP ZONE
Any debris placed from the sidewalk toward your property will not be picked up.

DEBRIS SEPARATION
Separate debris into the six categories shown.

DO NOT STACK OR LEAN
Placing debris near or on trees, poles, or other structures makes removal difficult. This includes fire hydrants and meters.

UNSURE WHERE TO PLACE DEBRIS?
If you don't have a sidewalk, ditch, or utility line in front of your house, place debris at the edge of your property before the curb.

HOUSEHOLD HAZARDOUS WASTE
Please, no chemicals at the curb. They can create a fire hazard. Please take them to: 844 Topaz Ct, Fort Myers, FL 33966

ELECTRONICS
• Computers
• Radios
• Stereos
• Televisions
• Other devices with a cord

APPLIANCES & WHITE GOODS
• Air conditioners
• Dishwashers
• Freezers
• Refrigerators
• Stoves
• Washers, dryers
• Water heaters

CONSTRUCTION & DEMOLITION DEBRIS
• Building materials
• Carpet
• Drywall
• Furniture
• Lumber
• Mattresses
• Plumbing

VEGETATIVE DEBRIS
• Logs
• Stumps
• Tree branches
• Leaves (do not put in bags) * If you have a lot of leaves and twigs in plastic bags, please seal these bags from any breakage.

Normal Household Trash
Normal household trash and bagged debris of any kind will not be picked up with disaster debris. You should continue to follow your normal garbage-removal schedule.

The brush will be ground into mulch, so plastic must be avoided.

FREQUENTLY ASKED QUESTIONS ABOUT HURRICANE CLEAN UP

What is the difference between storm-related debris and regular household trash?
Storm debris includes any trees, tree limbs and shrubs that went down in the hurricane. Regular household trash is what you would throw away in a typical week.

When will the storm debris be collected from my curb and what should I do to prepare?
There is no schedule for when storm debris will be collected from your neighborhood, but be assured that it will. Cleanup efforts take time.

When will my regular household collections resume?
Regular collections of garbage, recycling and your normal weekly yard waste resume as soon as it is safe for collection crews to do so.

Hurricane Ian Debris Removal

Hurricane Ian debris removal is Active. See below for details in your area.

Last Update: Oct 24, 2022 at 10 AM

Total Loads Collected	Total Collected	C & D Collected	Vegetation Collected
20,717 Loads	1,019,418 Cubic Yards	285,282 Cubic Yards	734,136 Cubic Yards

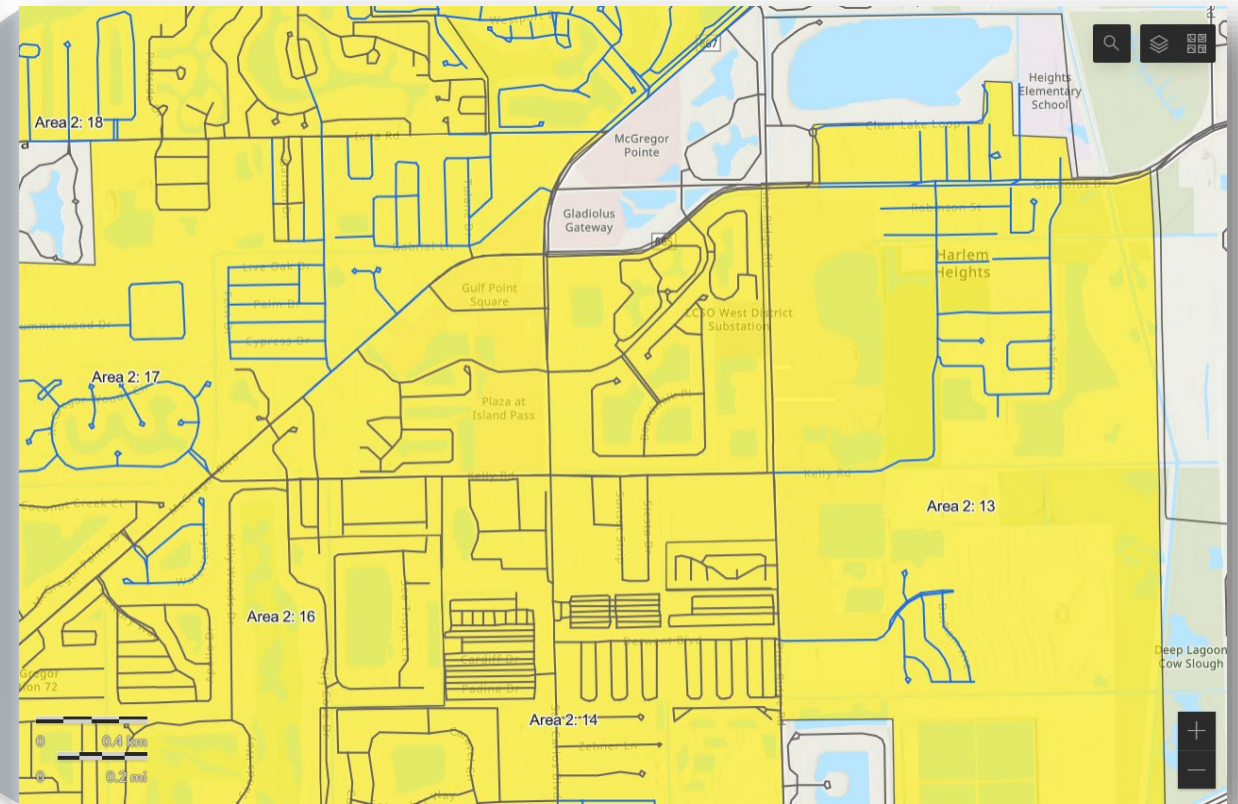
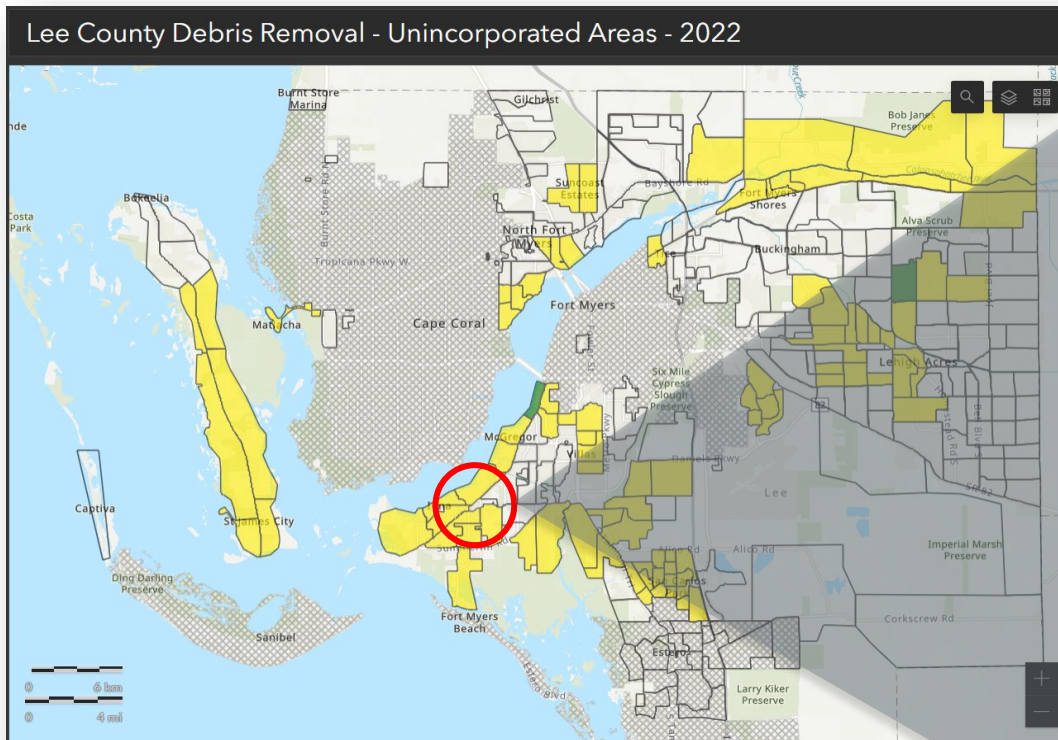
Lee County Debris Removal - Unincorporated Areas - 2022

104 Zones (1st Pass In Progress)
2 Zones (1st Pass Complete)

Citizen Tools

Debris Dashboard for Unincorporated Lee County

Zoom in to see street level details



BOCC Discussion



Lee County
Southwest Florida

Lee Board of County Commissioners | Special Workshop | October 26, 2022