

COMPONENTS OF CONTRACT PLANS SET
ROADWAY PLANS

LEE COUNTY BOARD OF COUNTY COMMISSIONERS

PUBLIC WORKS ADMINISTRATION
DEPARTMENT OF TRANSPORTATION

CONTRACT PLANS

PLANS OF PROPOSED GLENWOOD AVENUE SIDEWALK

COUNTY PROJECT NO. 6002

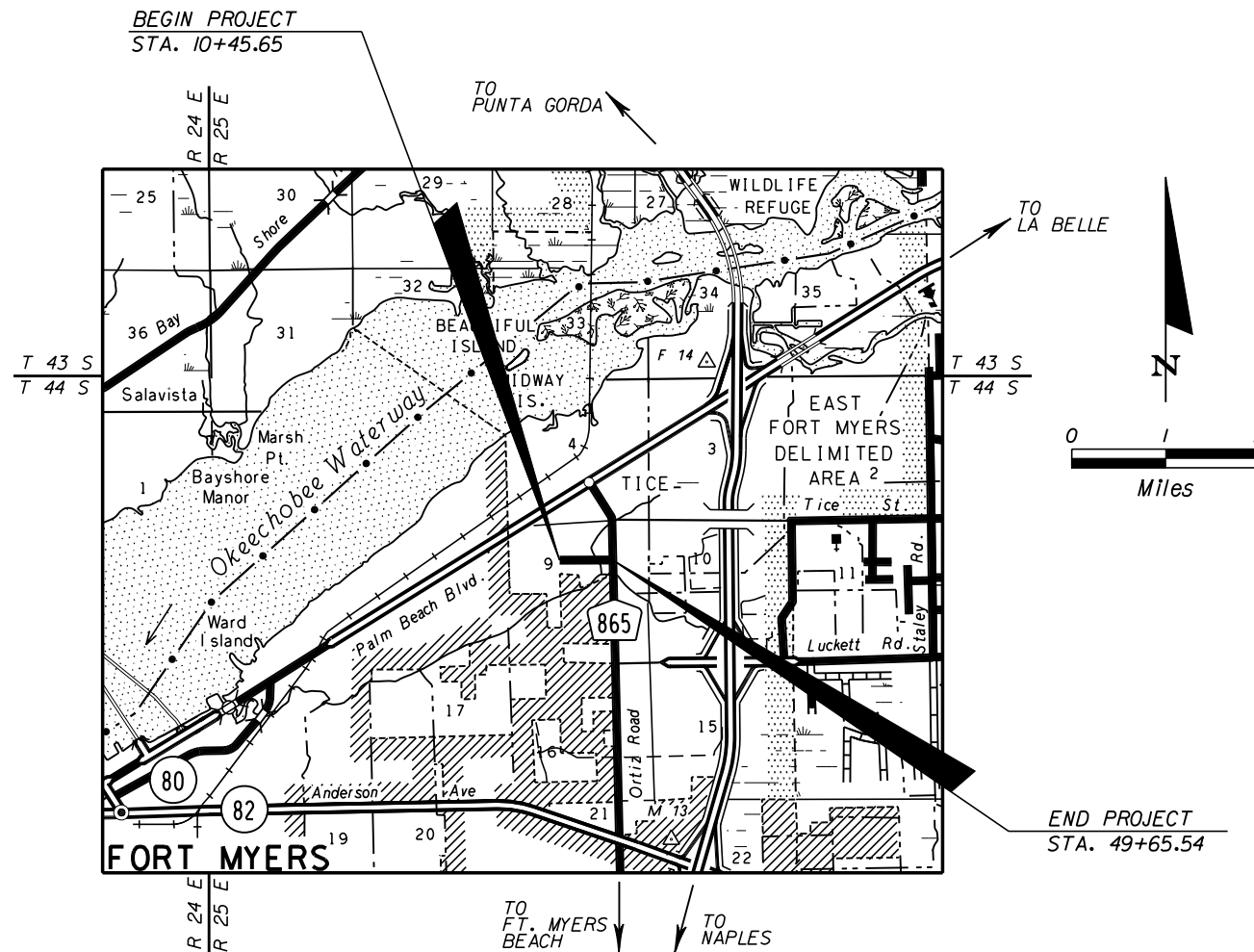
A DETAILED INDEX APPEARS ON THE
KEY SHEET OF EACH COMPONENT

INDEX OF ROADWAY PLANS

SHEET NO.	SHEET DESCRIPTION
1	KEY SHEET
2	SUMMARY OF PAY ITEMS
3	TYPICAL SECTION
4 - 5	SUMMARY OF QUANTITIES
6 - 7	SUMMARY OF DRAINAGE STRUCTURES
8	GENERAL NOTES
9 - 12	ROADWAY PLAN SHEETS
13 - 22	CROSS SECTIONS
23	STORMWATER POLLUTION PREVENTION PLAN

GOVERNING STANDARDS AND SPECIFICATIONS:
FLORIDA DEPARTMENT OF TRANSPORTATION,
DESIGN STANDARDS DATED JANUARY 2006.
STANDARD SPECIFICATIONS FOR ROAD AND BRIDGE
CONSTRUCTION DATED 2007,
AS AMENDED BY CONTRACT DOCUMENTS.

REVISIONS:



LOCATION MAP

LEE COUNTY, FLORIDA

LEE COUNTY PROJECT MANAGER: EYRA CASH, PE

ROADWAY SHOP DRAWINGS
TO BE SUBMITTED TO:



AIM ENGINEERING & SURVEYING, INC.
5802 BRECKENRIDGE PARKWAY, SUITE 100
TAMPA, FLORIDA 33610
TELEPHONE (888) 627-4144
FAX (813) 664-1899
ATTN: DAWN M. RATICAN, P.E. NO. 60226

PLANS PREPARED BY:



AIM ENGINEERING & SURVEYING, INC.
5802 BRECKENRIDGE PARKWAY, SUITE 100
TAMPA, FLORIDA 33610
TELEPHONE (888) 627-4144
FAX (813) 664-1899
Certificate of Authorization No. 3114
Contract No. C-7485
Vendor No. 59-2009167

NOTE: THE SCALE OF THESE PLANS MAY
HAVE CHANGED DUE TO REPRODUCTION.

THIS IS TO CERTIFY THAT THESE PLANS AND THE ASSOCIATED
CONSTRUCTION PROJECT ARE IN SUBSTANTIAL COMPLIANCE WITH
THE LEE COUNTY LAND DEVELOPMENT CODE WITH THE EXCEPTION
OF THE FOLLOWING DEVIATIONS WHICH HAVE BEEN APPROVED BY
THE DIRECTOR OF PUBLIC WORKS:
LIST OF DEVIATIONS: NONE

DEVELOPMENT ORDER APPROVED:
LEE COUNTY PUBLIC WORKS
ADMINISTRATOR

JIM LAVENDER _____ DATE _____
DIRECTOR OF PUBLIC WORKS.

ROADWAY PLANS
ENGINEER OF RECORD:


DAWN M. RATICAN, P.E. _____ DATE _____
P.E. NO. 60226

KEY SHEET REVISIONS		
DATE	BY	DESCRIPTION

FISCAL YEAR	SHEET NO.
07	1

<u>ITEM NUMBER</u>	<u>ITEM DESCRIPTION</u>	<u>UNIT</u>	<u>QUANTITY</u>
101-1	MOBILIZATION	LS	1
102-1	MAINTENANCE OF TRAFFIC	LS	1
104-10-2	SYNTHETIC BALE	LF	597
104-12	STAKED TURBIDITY BARRIER	LF	56
104-13-1	STAKED SILT FENCE, TYPE III	LF	122
110-1-1	CLEARING & GRUBBING	LS	1
110-7-1	MAILBOX-FURNISH AND INSTALL	EA	5
120-1	REGULAR EXCAVATION	CY	275
120-6	EMBANKMENT	CY	342
121-70	FLOWABLE FILL	CY	32
400-1-2	CONCRETE CLASS 1, ENDWALLS	CY	12.5
425-1-521	DITCH BOTTOM INLET, TYPE C (<10')	EA	2
425-1-531	DITCH BOTTOM INLET, TYPE C (MOD.<10')	EA	20
425-1-551	DITCH BOTTOM INLET, TYPE E (<10')	EA	4
425-2-41	MANHOLE, TYPE P-7 (<10')	EA	2
425-2-61	MANHOLE, TYPE P-8 (<10')	EA	2
425-2-71	MANHOLE, TYPE J-7 (<10')	EA	2
425-2-91	MANHOLE, TYPE J-8 (<10')	EA	1
430-171-101	PIPE CULV. OPT. MAT. (SS) (RND.) (UP TO 24")	LF	1961
430-172-101	PIPE CULV. OPT. MAT. (CD) (RND.) (UP TO 24")	LF	65
430-172-103	PIPE CULV. OPT. MAT. (CD) (RND.) (37-48")	LF	6
430-172-202	PIPE CULV. OPT. MAT. (CD) (OTHER) (25-36")	LF	9
430-174-104	PIPE CULV. OPT. MAT. (SD) (RND.) (UP TO 24")	LF	44
430-942-25	PIPE DESILTING, CROSS DRAIN, 18"	LF	46
430-942-29	PIPE DESILTING, CROSS DRAIN, 24"	LF	104
430-942-38	PIPE DESILTING, CROSS DRAIN, 36"	LF	37
430-942-40	PIPE DESILTING, CROSS DRAIN, 42"	LF	49
430-944-23	PIPE DESILTING, SIDE DRAIN, 15"	LF	71
430-944-25	PIPE DESILTING, SIDE DRAIN, 18"	LF	27
430-984-125	MES (SD) (18")	EA	3
430-984-129	MES (SD) (24")	EA	1
515-1-2	PIPE HANDRAIL, GUIDERAIL, ALUMINUM	LF	180
515-2-301	PEDESTRIAN/BICYCLE RAILING (ALUMINUM) (42" PICKET RAILING)	LF	155
522-1	SIDEWALK CONCRETE, 4" THICK	SY	1934
522-2	SIDEWALK CONCRETE, 6" THICK	SY	98
575-1	TURF COMPLETE - SODDING	SY	4840

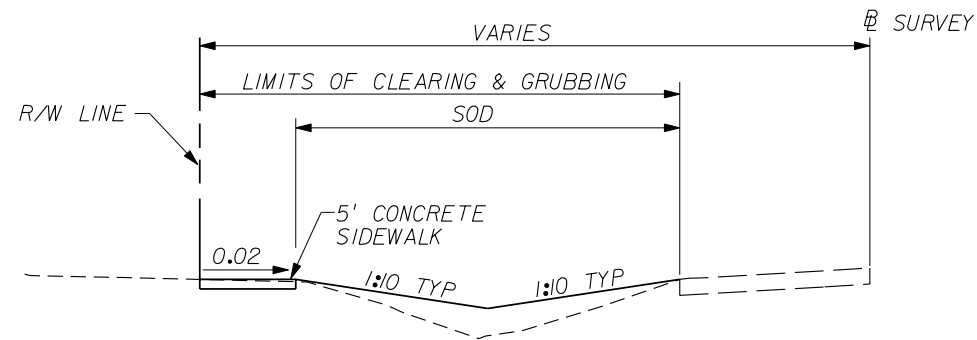
NO.	DATE	BY	REVISIONS - DESCRIPTION

AIM Engineering & Surveying, Inc.
5802 BRECKENRIDGE PARKWAY STE. 100
TAMPA, FLORIDA 33610
TELEPHONE (888) 627-4144
FAX (813) 664-1899
 CERTIFICATE OF AUTHORIZATION NO. 3114

APPROVED BY:
DAWN M. RATCAN, P.E.
REGISTERED PROFESSIONAL ENGINEER
FLORIDA CERTIFICATE NO. 60226

 PUBLIC WORKS DEPARTMENT
LEE COUNTY of
SOUTHWEST FLORIDA TRANSPORTATION
1500 MONROE STREET FORT MYERS, FLORIDA 33901
(239) 479-8900 www.lee-county.com/publloworks/do1111e.htm

SUMMARY OF PAY ITEMS



TYPICAL SECTION
N.T.S.

GLENWOOD AVENUE SIDEWALK PROJECT
FROM PROSPECT AVE. TO ORTIZ AVE.
STA. 10+43.65 TO STA. 49+65.54

NO.	DATE	BY	REVISIONS - DESCRIPTION



AIM Engineering & Surveying, Inc.
5802 BRECKENRIDGE PARKWAY STE. 100
TAMPA, FLORIDA 33610
TELEPHONE (888) 627-4144
FAX (813) 664-1899
CERTIFICATE OF AUTHORIZATION NO. 3114

APPROVED BY:
DAWN M. RATCAN, P.E.
REGISTERED PROFESSIONAL ENGINEER
FLORIDA CERTIFICATE NO. 60226



PUBLIC WORKS DEPARTMENT
LEE COUNTY of
SOUTHWEST FLORIDA TRANSPORTATION
1500 MONROE STREET FORT MYERS, FLORIDA 33901
(239) 479-8900 www.lee-county.com/publloworks/do1111e.htm

TYPICAL SECTION

SHEET
3 of 23
SHEETS

SUMMARY OF EARTHWORK		
DESCRIPTION	CY	
	P	F
REGULAR EXCAVATION =	275	
EMBANKMENT =	342	

SUMMARY OF SYNTHETIC BALE				
LOCATION STA. TO STA.	SIDE	QUANTITY (LF)		REMARKS
		P	F	
10+50.00	LT.	21		
11+70.00	LT.	12		
13+40.00	LT.	12		
22+00.00	LT.	12		
30+05.00	RT.	12		
33+00.00	LT.	12		
36+00.00	LT.	12		
38+00.00	LT.	12		
38+70.00	LT.	12		
18 DBI @ 10 EA.	LT.	180		
60 MOD DBI @ 5 EA.	LT.	300		
TOTAL		597		

SUMMARY OF PIPE DESILTING			
STATION	SIDE	SIZE	LENGTH (FT)
10+56.35 TO 10+55.64	LT. TO RT.	24" RCP	30
11+46.39 TO 11+66.73	LT.	15" RCP	20
13+10.28 TO 13+36.88	LT.	18" RCP TO CMP	27
20+30.45 TO 20+30.25	LT. TO RT.	24" RCP	37
20+34.17 TO 20+33.37	LT. TO RT.	24" RCP	37
30+37.91 TO 30+38.57	LT. TO RT.	18" RCP	46
36+88.01	LT. TO RT.	29" X 45" RCP	37
37+12.08 TO 37+28.85	LT.	15" RCP	17
38+32.09 TO 38+66.42	LT.	15" RCP	34
43+97.08 TO 44+21.94	LT. TO RT.	48" X 76" TO 42" CMP	49

SUMMARY OF SODDING				
LOCATION STA. TO STA.	SIDE	P	F	FIELD BOOK REFERENCE
		SY	SY	
10+46.59 TO 13+52.52	LT.	405.1		
10+47.04 TO 10+62.01	LT.	8.3		
13+44.19 TO 13+59.11	LT.	8.2		
13+81.44 TO 14+22.02	LT.	11.3		
13+88.70 TO 16+90.29	LT.	260.7		
16+55.28 TO 16+97.26	LT.	12.0		
17+24.18 TO 17+50.77	LT.	9.9		
17+28.85 TO 26+75.55	LT.	912.3		
20+13.95 TO 20+22.50	LT.	1.3		
20+42.50 TO 20+51.18	LT.	1.7		
24+98.62 TO 25+56.76	LT.	16.9		
26+98.69 TO 27+19.24	LT.	13.0		
27+00.51 TO 30+13.19	LT.	462.2		
29+80.44 TO 30+12.84	LT.	28.0		
29+96.23 TO 30+13.34	RT.	197.8		
30+33.02 TO 38+40.45	LT.	997.7		
30+33.67 TO 30+43.85	LT.	20.7		
36+97.94 TO 37+10.71	LT.	3.0		
37+76.44 TO 38+41.59	LT.	26.9		
38+58.71 TO 46+67.73	LT.	1116.1		
38+58.98 TO 38+74.64	LT.	8.4		
43+19.91 TO 43+80.56	LT.	44.4		
44+03.97 TO 44+24.50	LT.	26.3		
44+41.83 TO 44+92.60	LT.	41.2		
45+08.11 TO 45+39.63	LT.	8.4		
46+49.03 TO 46+69.85	LT.	13.7		
46+95.39 TO 47+09.99	LT.	8.8		
DRAINAGE STRUCTURES		175.0		
TOTAL		4840		

SUMMARY OF SILT FENCE				
LOCATION STA. TO STA.	SIDE	LENGTH (FT)		REMARKS
		P	F	
20+20.00 TO 20+45.00	LT.	22		
30+05.00	RT.	10		
36+72.00 TO 36+81.00	LT.	9		
36+90.00 TO 37+00.00	LT.	10		
43+22.00 TO 43+78.00	LT.	56		
44+05.00 TO 44+20.00	LT.	15		
TOTAL		122		

SUMMARY OF HANDRAIL				
LOCATION STA. TO STA.	SIDE	LENGTH (FT)		REMARKS
		P	F	
13+95.50-14+04.50	LT.	9		INDEX 282,870
14+45.50-14+54.50	LT.	9		INDEX 282,870
15+28.50-15+37.50	LT.	9		INDEX 282,870
15+70.50-15+79.50	LT.	9		INDEX 282,870
16+45.50-16+54.50	LT.	9		INDEX 282,870
16+75.50-16+84.50	LT.	9		INDEX 282,870
17+35.50-17+44.50	LT.	9		INDEX 282,870
18+05.50-18+14.50	LT.	9		INDEX 282,870
18+55.50-18+64.50	LT.	9		INDEX 282,870
19+45.50-19+54.50	LT.	9		INDEX 282,870
20+13.00-20+52.00	LT.	40		INDEX 860
21+15.50-21+24.50	LT.	9		INDEX 282,870
22+45.50-22+54.50	LT.	9		INDEX 282,870
24+35.50-24+44.50	LT.	9		INDEX 282,870
25+25.50-25+34.50	LT.	9		INDEX 282,870
26+25.50-26+34.50	LT.	9		INDEX 282,870
27+10.50-27+19.50	LT.	9		INDEX 282,870
36+67.00-37+07.00	LT.	40		INDEX 860
43+47.00-44+22.00	LT.	75		INDEX 860
44+75.50-44+84.50	LT.	9		INDEX 282,870
45+75.50-45+84.50	LT.	9		INDEX 282,870
46+50.50-46+59.50	LT.	9		INDEX 282,870
47+05.50-47+14.50	LT.	9		INDEX 282,870
TOTAL		155		INDEX 860
TOTAL		180		INDEX 870

SUMMARY OF STAKED TURBIDITY BARRIER				
LOCATION STA. TO STA.	SIDE	LENGTH (FT)		REMARKS
		P	F	
20+29.00 TO 20+37.00	RT.	8		
36+80.00 TO 36+90.00	RT.	10		
43+78.00 TO 44+05.00	RT.	28		
30+05.00	RT.	10		
TOTAL		56		

PAY ITEM FOOTNOTES

- 102- 1 INCLUDES COST OF ANY EXISTING SIGNS REMOVED DURING CONSTRUCTION TO BE REPLACED. CLOSURES OF ANY LANES OR STREETS SHALL BE APPROVED BY THE COUNTY.
- 110- 1-1 INCLUDES COST OF REMOVAL OF CONCRETE ENDWALLS AND DRIVEWAYS NECESSARY FOR CONSTRUCTION OF SIDEWALK AND PIPE.
- 121- 70 TO BE USED ON PIPES CROSSING UNDER SIDE STREETS.

- 430-172-129 COST OF EXISTING ROADWAY REPLACEMENT SHALL INCLUDE 10" LIMEROCK AND 2" TYPE S PAVEMENT AND SHALL BE INCLUDED IN THE COST OF THE PIPE.
- 430-171-125 INCLUDES 345 LF OF REINFORCED CONCRETE PIPE (RCP) AND 466 LF OF HIGH DENSITY POLYETHYLENE PIPE (HDPE)
- 430-171-129 INCLUDES 688 LF OF REINFORCED CONCRETE PIPE (RCP) AND 462 LF OF HIGH DENSITY POLYETHYLENE PIPE (HDPE)

NO.	DATE	BY	REVISIONS - DESCRIPTION

AIM Engineering & Surveying, Inc.
 5802 BRECKENRIDGE PARKWAY STE. 100
 TAMPA, FLORIDA 33610
 TELEPHONE (888) 627-4144
 FAX (813) 664-1899
 CERTIFICATE OF AUTHORIZATION NO. 3114

APPROVED BY:
DAWN M. RATCAN, P.E.
 REGISTERED PROFESSIONAL ENGINEER
 FLORIDA CERTIFICATE NO. 60226

PUBLIC WORKS DEPARTMENT
 LEE COUNTY of SOUTHWEST FLORIDA TRANSPORTATION
 1500 MONROE STREET FORT MYERS, FLORIDA 33901
 (239) 479-8900 www.lee-county.com/publworks/do111e.htm

SUMMARY OF QUANTITIES

SUMMARY OF 4" SIDEWALK

LOCATION			SIDE	SY		FIELD BOOK REFERENCE
STA.	TO STA.			P	F	
10+45.00	TO	11+48.67	LT.	57.1		
11+65.40	TO	13+17.00	LT.	84.4		
13+28.32	TO	13+55.78	LT.	15.6		
13+84.28	TO	13+98.29	LT.	6.6		
14+01.62	TO	14+48.33	LT.	26.6		
14+51.66	TO	15+13.17	LT.	34.1		
15+22.52	TO	15+31.33	LT.	5.2		
15+34.66	TO	15+73.33	LT.	21.5		
15+76.66	TO	16+48.33	LT.	39.8		
16+51.66	TO	16+78.34	LT.	15.0		
16+81.67	TO	16+95.05	LT.	6.1		
17+24.18	TO	17+38.33	LT.	6.8		
17+41.66	TO	18+08.32	LT.	37.0		
18+11.64	TO	18+58.33	LT.	26.3		
18+61.65	TO	19+48.35	LT.	46.2		
19+51.67	TO	21+18.62	LT.	92.4		
21+21.94	TO	22+48.62	LT.	70.4		
22+51.94	TO	23+53.43	LT.	55.9		
23+67.26	TO	24+38.32	LT.	40.0		
24+41.64	TO	24+87.06	LT.	25.1		
24+99.77	TO	25+56.76	LT.	25.9		
25+80.95	TO	26+28.33	LT.	26.4		
26+31.65	TO	26+78.74	LT.	25.3		
26+98.71	TO	27+13.31	LT.	7.4		
27+16.62	TO	28+95.97	LT.	99.5		
29+12.89	TO	30+12.87	LT.	56.0		
30+32.59	TO	38+41.51	LT.	449.9		
38+57.87	TO	39+83.78	LT.	69.7		
39+96.11	TO	40+58.84	LT.	34.8		
40+74.36	TO	44+24.94	LT.	194.8		
44+42.33	TO	44+78.34	LT.	20.4		
44+81.66	TO	44+95.19	LT.	6.8		
45+09.60	TO	45+78.34	LT.	39.0		
45+81.67	TO	46+53.38	LT.	39.8		
46+56.70	TO	46+71.06	LT.	7.1		
46+94.66	TO	47+08.03	LT.	6.6		
47+11.35	TO	49+11.44	LT.	112.5		
TOTAL				1934		

SUMMARY OF 6" SIDEWALK

LOCATION			SIDE	SY		FIELD BOOK REFERENCE
STA.	TO STA.			P	F	
11+48.67	TO	11+65.40	LT.	9.2		
13+17.00	TO	13+28.32	LT.	6.2		
15+13.17	TO	15+22.52	LT.	5.0		
23+53.43	TO	23+67.26	LT.	7.7		
24+87.06	TO	24+99.77	LT.	6.8		
25+56.76	TO	25+80.95	LT.	13.3		
28+95.97	TO	29+12.89	LT.	10.0		
39+83.78	TO	39+96.11	LT.	6.8		
40+58.84	TO	40+74.36	LT.	8.1		
44+24.94	TO	44+42.33	LT.	9.9		
44+95.19	TO	45+09.60	LT.	8.1		
49+11.44	TO	49+24.25	LT.	7.0		
TOTAL				98.1		

NO.	DATE	BY	REVISIONS - DESCRIPTION

AIM Engineering & Surveying, Inc.
 5802 BRECKENRIDGE PARKWAY STE. 100
 TAMPA, FLORIDA 33610
 TELEPHONE (888) 627-4144
 FAX (813) 664-1899
 CERTIFICATE OF AUTHORIZATION NO. 3114

APPROVED BY:
DAWN M. RATCAN, P.E.
 REGISTERED PROFESSIONAL ENGINEER
 FLORIDA CERTIFICATE NO. 60226

PUBLIC WORKS DEPARTMENT
 LEE COUNTY of
 SOUTHWEST FLORIDA TRANSPORTATION
 1500 MONROE STREET FORT MYERS, FLORIDA 33901
 (239) 479-8900 www.lee-county.com/publloworks/do1111e.htm

SUMMARY OF QUANTITIES

GENERAL NOTES
=====

1. EXISTING DRAINAGE STRUCTURES WITHIN CONSTRUCTION LIMITS SHALL REMAIN, UNLESS OTHERWISE NOTED.
2. ANY PUBLIC LAND CORNER OR BENCH MARK WITHIN THE LIMITS OF CONSTRUCTION IS TO BE PROTECTED. IF A CORNER MONUMENT IS IN DANGER OF BEING DESTROYED AND HAS NOT BEEN PROPERLY REFERENCED, THE ENGINEER SHALL BE NOTIFIED.
3. THE CONTRACTOR SHALL USE CARE IN LOCATIONS WHERE SIDEWALK IS JOGGED TO AVOID IMPACTS TO EXISTING TREES. OR IMPACTS TO EXISTING FENCE THAT ARE TO REMAIN.
4. THE CONTRACTOR SHALL FURNISH THE ENGINEER, PRIOR TO INCORPORATION INTO THE PROJECT. A CERTIFICATION FROM THE FLORIDA DEPARTMENT OF AGRICULTURE AND CONSUMER SERVICES DIVISION OF PLANT INDUSTRY, STATING THAT THE SOD, HAY, STRAW AND MULCH MATERIALS ARE FREE OF NOXIOUS WEEDS, INCLUDING TROPICAL SODA APPLE.
5. ALL SYNTHETIC BALES AND SILT FENCE SHALL BE REMOVED AT THE COMPLETION OF THE PROJECT.
6. ALL LANES ON GLENWOOD AVE. MUST BE OPEN FOR TRAFFIC DURING AN EVACUATION NOTICE OF A HURRICANE OR OTHER CATASTROPHIC EVENTS AND SHALL REMAIN OPEN FOR THE DURATION OF THE EVACUATION OR EVENT AS DIRECTED BY THE PROJECT ENGINEER.
7. THE CONTRACTOR IS TO MAINTAIN AND KEEP STREET NAME IDENTIFICATION VISIBLE DURING CONSTRUCTION OPERATIONS.
8. THE CONTRACTOR SHALL STOCKPILE ALL MATERIALS AND EQUIPMENT WITHIN RIGHT-OF-WAY LIMITS. ALL DRIVEWAYS AND STREETS SHALL BE ACCESSIBLE AT ALL TIMES.
9. ALL ELEVATIONS REFERENCED TO THE NATIONAL GEODETIC VERTICAL DATUM OF 1929.
10. A TWO FOOT DETECTABLE WARNING AREA (INDEX NO 304) SHALL BE PLACED ON SIDEWALK AT ALL LOCATIONS THAT INTERSECT WITH SIDE ROADS.
11. THE LOCATION(S) OF THE UTILITIES SHOWN IN THE PLANS AND CROSS SECTIONS ARE BASED ON LIMITED INVESTIGATION TECHNIQUES AND SHOULD BE CONSIDERED APPROXIMATE ONLY. UTILITIES SHALL REMAIN UNLESS OTHERWISE NOTED.
12. THE CONTRACTOR SHALL COORDINATE WITH LEE COUNTY TO ADDRESS UTILITIES AT STA. 23+30 +/- LT. AND STA. 25+30 +/- LT. PRIOR TO CONSTRUCTION IN THAT VACINITY.
13. THE CONTRACTOR SHALL NOTIFY UTILITY OWNERS THROUGH SUNSHINE STATE ONE CALL OF FLORIDA (1-800-432-4770) AND UTILITY OWNERS LISTED BELOW IN TWO BUSINESS DAYS (OR 10 DAYS IF DIGGING UNDER WATER) IN ADVANCE OF BEGINNING CONSTRUCTION ON THE JOB SITE.

UTILITY OWNERS:

COMPANY	CONTACT	TELEPHONE
LEE COUNTY TRAFFIC & OPERATIONS	MIKE SAY	239-533-9514
LEE COUNTY UTILITIES	VIOLET MOLNAR	239-479-8181
FLORIDA POWER & LIGHT	W.R. GARRISON	239-332-9129
AT&T	STEFAN ERIKSSON	407-578-8000
EMBARQ	RONALD POPP	239-336-2162
TECO/PEOPLES GAS	JERIMIAH JOHNSON	239-690-5513
COMCAST	SAM MORGAN	239-332-2004

DRAINAGE STRUCTURE NOTES
=====

1. ALL STRUCTURE BOTTOMS ARE ALT. B UNLESS OTHERWISE NOTED.
2. OFFSETS FOR DITCH BOTTOM INLETS AND MANHOLES ARE TO THE CENTER OF THE STRUCTURE. OFFSETS FOR STRAIGHT CONCRETE ENDWALLS ARE TO THE REFERENCE POINT AS IDENTIFIED IN FDOT STANDARD INDEX 250. OFFSETS FOR MITERED END SECTIONS ARE TO THE REFERENCE POINT AS IDENTIFIED IN FDOT STANDARD INDEX 272 AND 273.
3. UNLESS SPECIFICALLY CALLED FOR, REINFORCED CONCRETE PIPE (RCP) SHALL INCLUDE BOTH FIBER REINFORCED CONCRETE PIPE (FRCP) MEETING ASTM C-1450 AND STEEL REINFORCED CONCRETE PIPE (SRCP) MEETING ASTM C-76 AS SPECIFIED IN SECTION 449 AND SHALL BE INSTALLED IN ACCORDANCE WITH SECTION 125, OF THE FDOT STANDARDS AND SPECIFICATIONS FOR ROAD AND BRIDGE CONSTRUCTION.
4. HIGH DENSITY POLYETHYLENE PIPE (HDPE) SHALL BE ADS BLACK OR CONTACT A2000.
5. THE CONTRACTOR IS RESPONSIBLE FOR REPAIRING OR REPLACING ANY EXISTING STRUCTURES THAT ARE TO REMAIN AND ARE DAMAGED DURING CONSTRUCTION.

NO.	DATE	BY	REVISIONS - DESCRIPTION

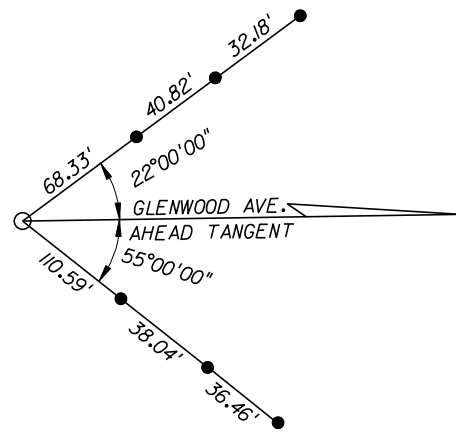
AIM Engineering & Surveying, Inc.
5802 BRECKENRIDGE PARKWAY STE. 100
TAMPA, FLORIDA 33610
TELEPHONE (888) 627-4144
FAX (813) 664-1899
CERTIFICATE OF AUTHORIZATION NO. 3114

APPROVED BY:
DAWN M. RATCAN, P.E.
REGISTERED PROFESSIONAL ENGINEER
FLORIDA CERTIFICATE NO. 60226

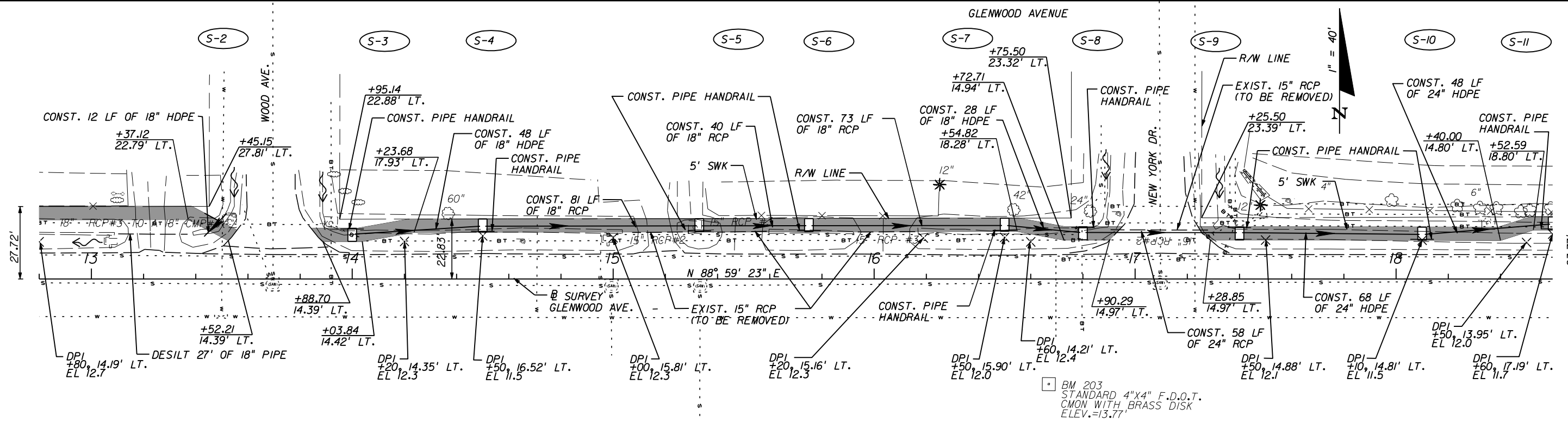
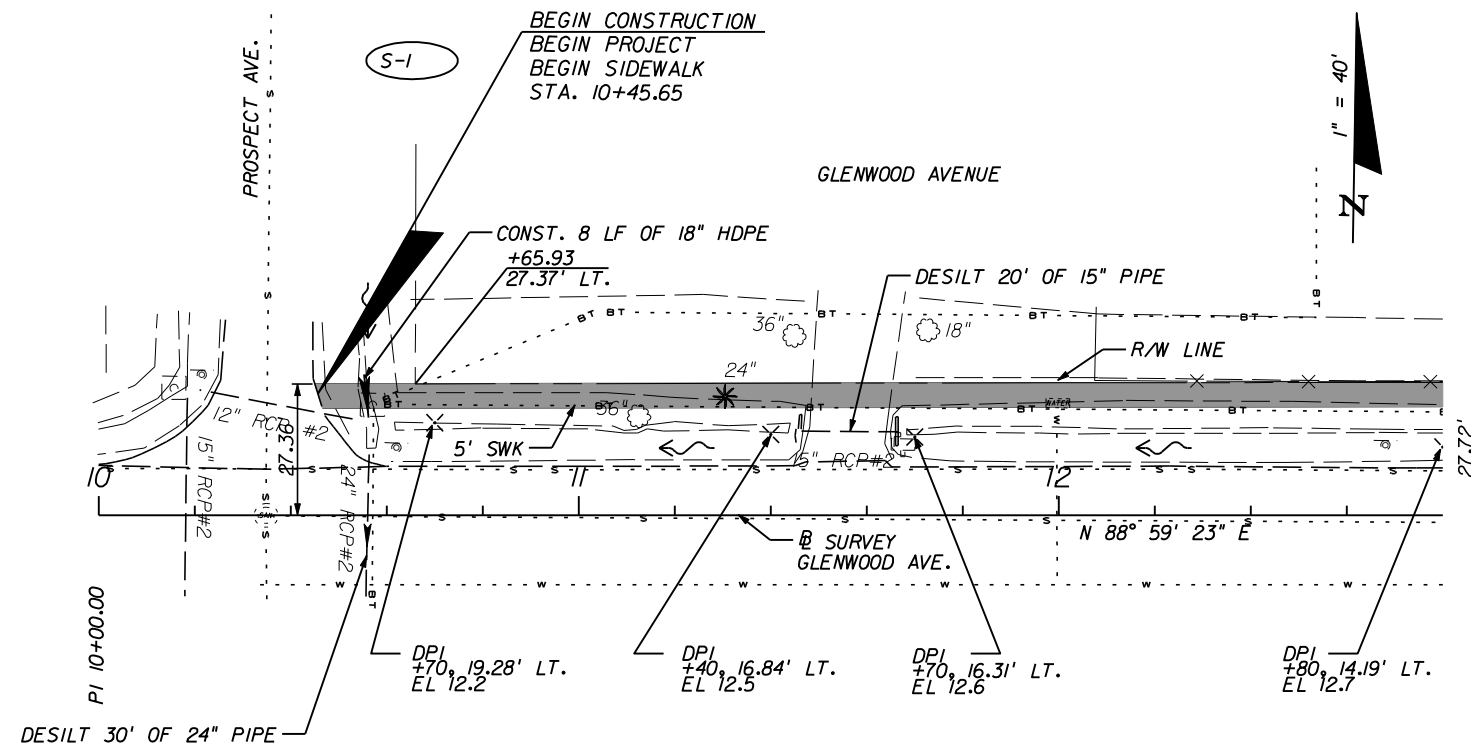
PUBLIC WORKS DEPARTMENT
LEE COUNTY of
SOUTHWEST FLORIDA TRANSPORTATION
1500 MONROE STREET FORT MYERS, FLORIDA 33901
(239) 479-8900 www.lee-county.com/publloworks/do1111e.htm

GENERAL NOTES

BM 204
STANDARD 4"x4" F.D.O.T.
COMMON WITH BRASS DISK
ELEV.=13.73'
N 848069.40
E 712983.45



B.O.S. STA. 10+00.00
SURVEY CENTER LINE GLENWOOD AVE.



BM 203
STANDARD 4"x4" F.D.O.T.
COMMON WITH BRASS DISK
ELEV.=13.77'

NO.	DATE	BY	REVISIONS - DESCRIPTION

AIM Engineering & Surveying, Inc.
5802 BRECKENRIDGE PARKWAY STE. 100
TAMPA, FLORIDA 33610
TELEPHONE (888) 627-4144
FAX (813) 664-1899
CERTIFICATE OF AUTHORIZATION NO. 3114

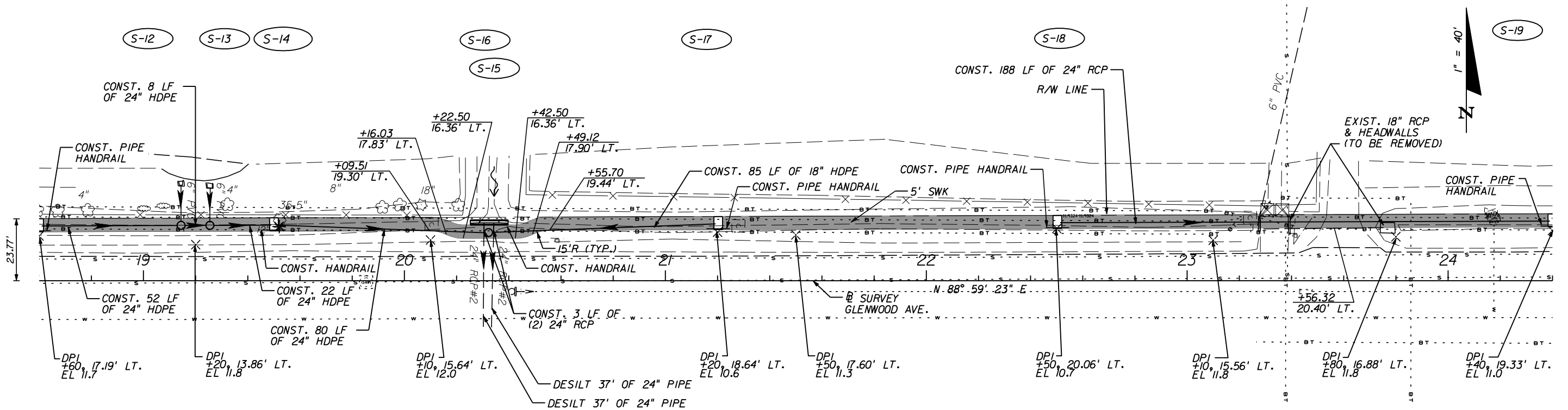
APPROVED BY:
DAWN M. RATICAN, P.E.
REGISTERED PROFESSIONAL ENGINEER
FLORIDA CERTIFICATE NO. 60226

PUBLIC WORKS DEPARTMENT
LEE COUNTY of SOUTHWEST FLORIDA TRANSPORTATION
1500 MONROE STREET FORT MYERS, FLORIDA 33901
(239) 479-8900 www.lee-county.com/publworksw/dot111e.htm

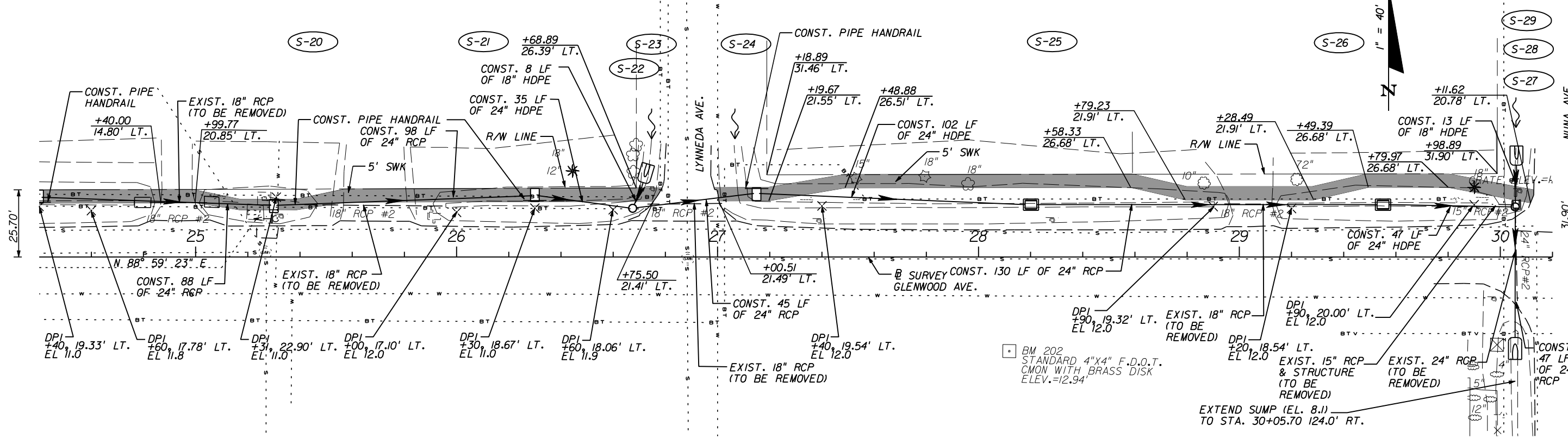
PLAN SHEET (1)
GLENWOOD AVENUE
STA. 10+45.65 TO STA. 18+60.00

SHEET
9 of 23
SHEETS

GLENWOOD AVENUE



GLENWOOD AVENUE



NO.	DATE	BY	REVISIONS - DESCRIPTION

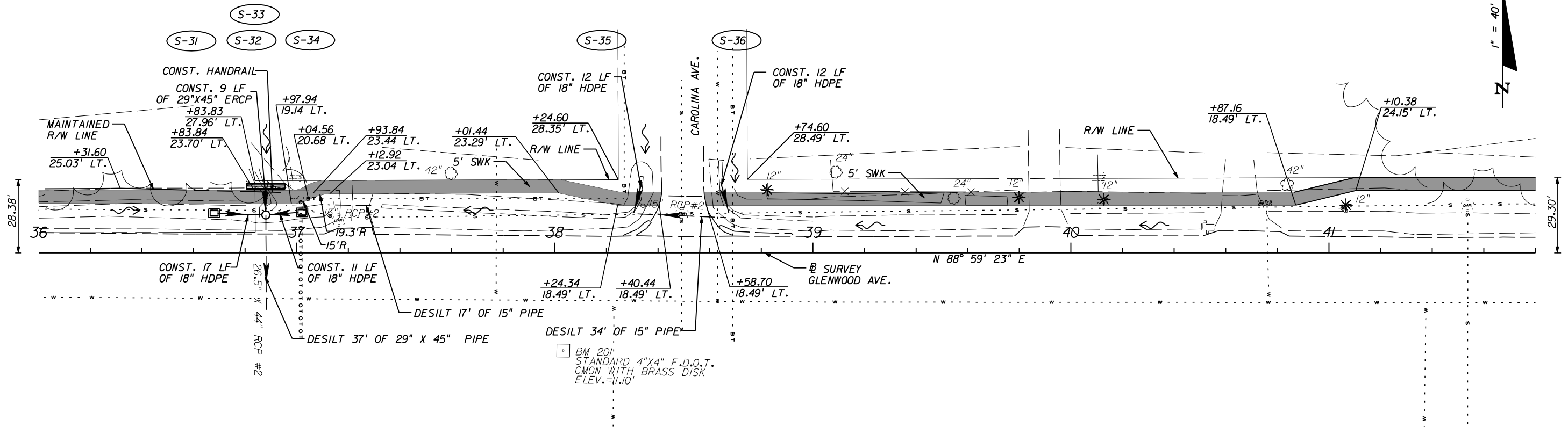
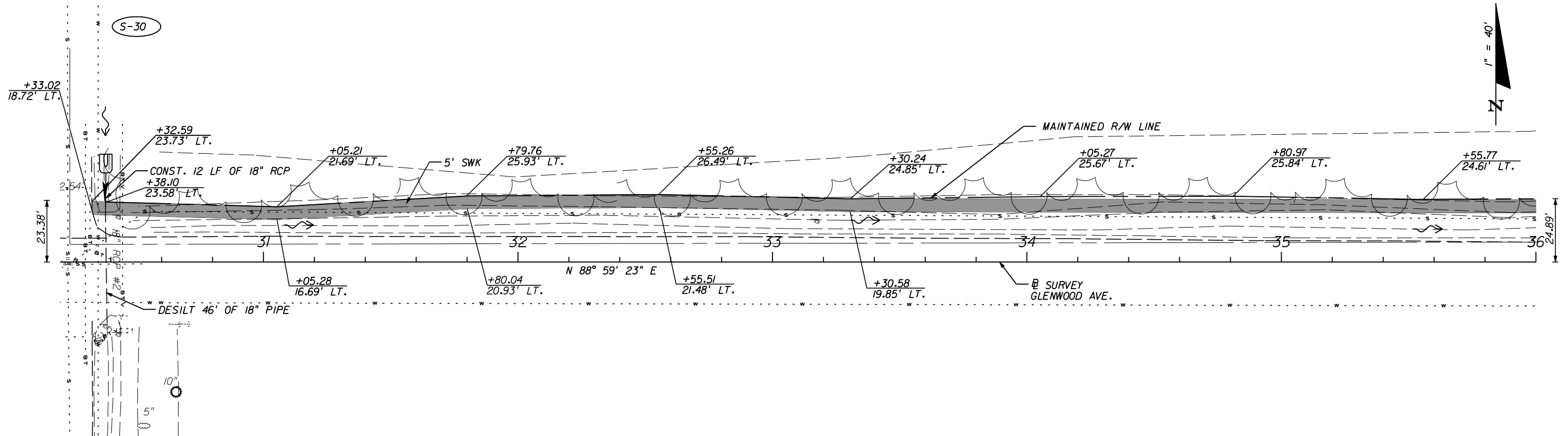
AIM Engineering & Surveying, Inc.
 5802 BRECKENRIDGE PARKWAY STE. 100
 TAMPA, FLORIDA 33610
 TELEPHONE (888) 627-4144
 FAX (813) 664-1899
 CERTIFICATE OF AUTHORIZATION NO. 3114

APPROVED BY:
DAWN M. RATIGAN, P.E.
 REGISTERED PROFESSIONAL ENGINEER
 FLORIDA CERTIFICATE NO. 60226

PUBLIC WORKS DEPARTMENT
 LEE COUNTY of SOUTHWEST FLORIDA
 1500 MONROE STREET FORT MYERS, FLORIDA 33901
 (239) 479-8900 www.lee-county.com/publiworks/dot11e.htm

PLAN SHEET (2)
GLENWOOD AVENUE
STA. 18+60.00 TO STA. 30+20.00

SHEET
 10 of 23
 SHEETS



NO.	DATE	BY	REVISIONS - DESCRIPTION

AIM Engineering & Surveying, Inc.
 5802 BRECKENRIDGE PARKWAY STE. 100
 TAMPA, FLORIDA 33610
 TELEPHONE (888) 627-4144
 FAX (813) 664-1899
 CERTIFICATE OF AUTHORIZATION NO. 3114

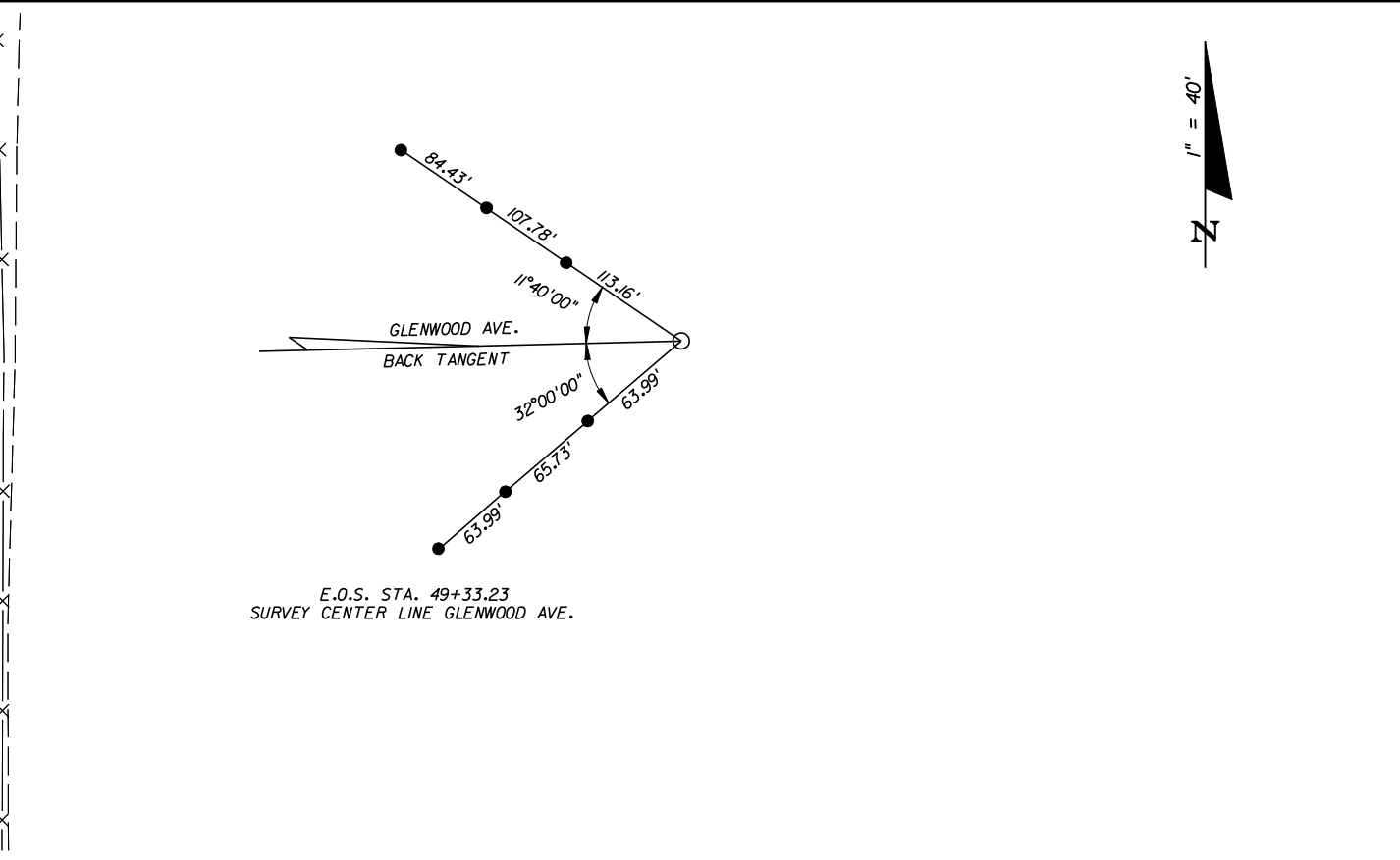
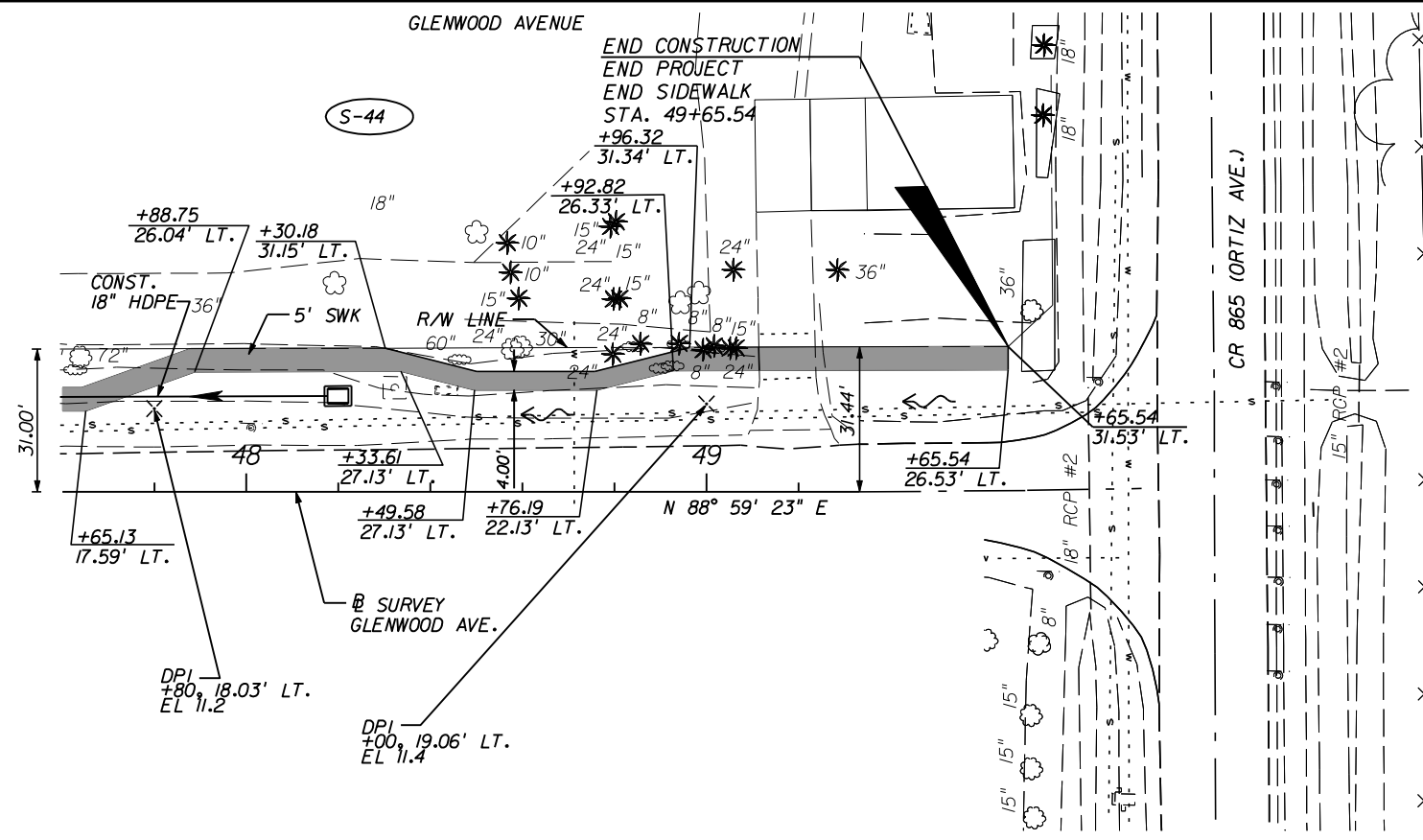
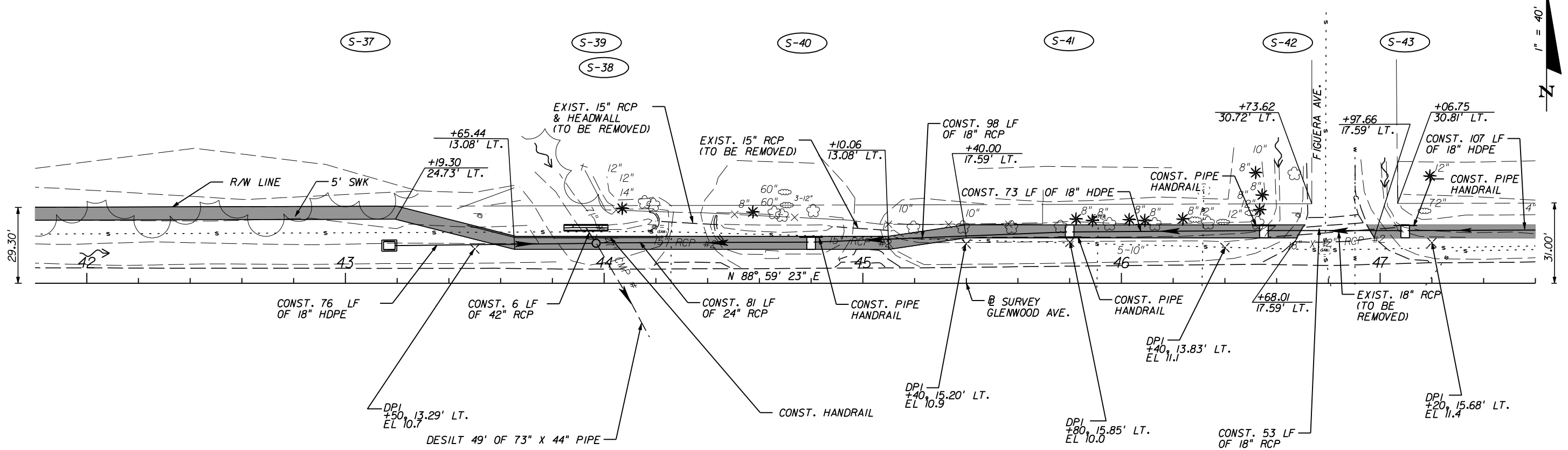
APPROVED BY:
DAWN M. RATICAN, P.E.
 REGISTERED PROFESSIONAL ENGINEER
 FLORIDA CERTIFICATE NO. 60226

PUBLIC WORKS DEPARTMENT
 LEE COUNTY of
 SOUTHWEST FLORIDA TRANSPORTATION
 1500 MONROE STREET FORT MYERS, FLORIDA 33901
 (239) 479-8900 www.lee-county.com/publiworks/dot11e.htm

PLAN SHEET (3)
GLENWOOD AVENUE
STA. 30+20.00 TO STA. 41+80.00

SHEET
 11 of 23
 SHEETS

GLENWOOD AVENUE



NO.	DATE	BY	REVISIONS - DESCRIPTION

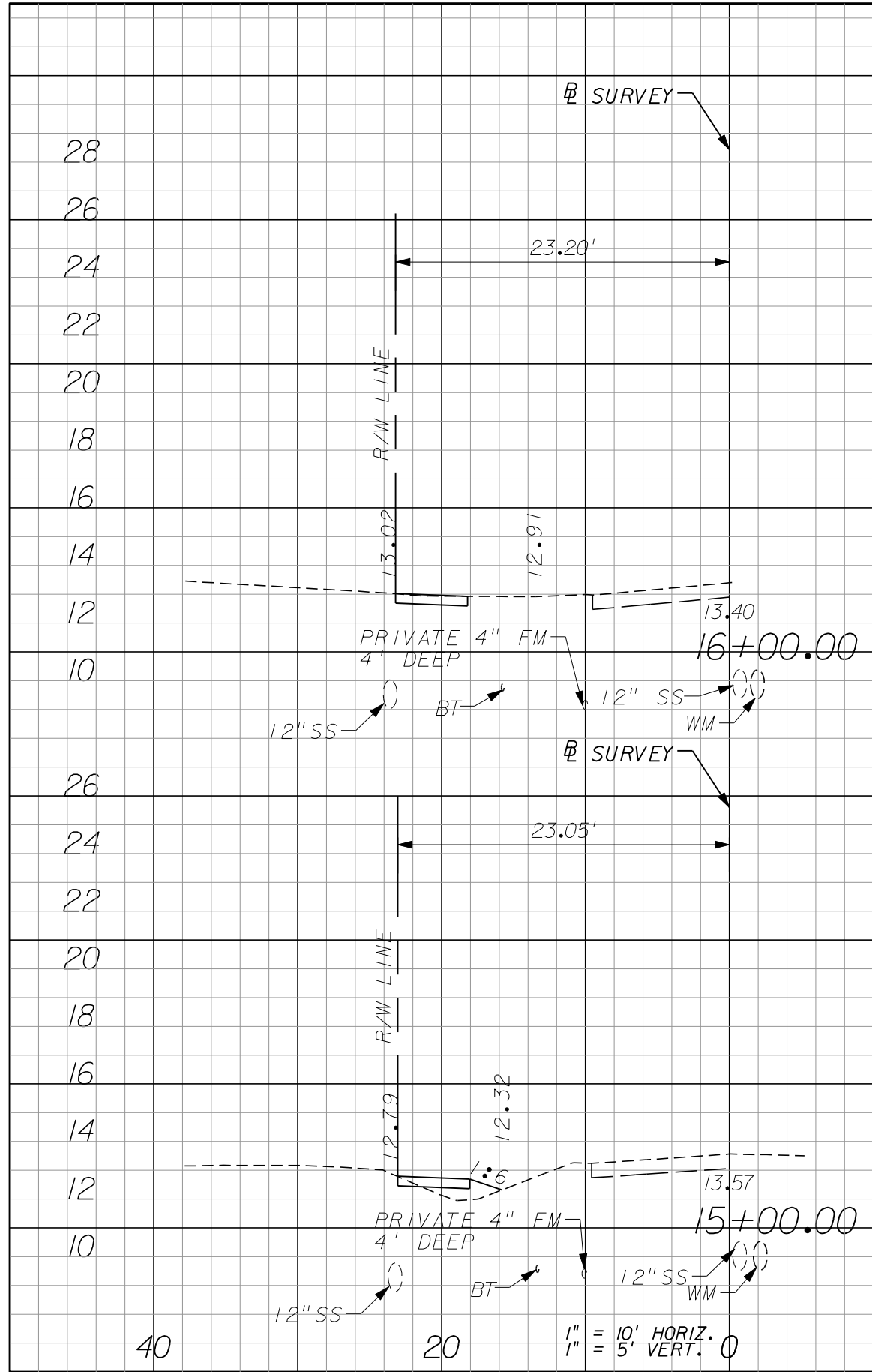
AIM Engineering & Surveying, Inc.
 5802 BRECKENRIDGE PARKWAY STE. 100
 TAMPA, FLORIDA 33610
 TELEPHONE (888) 627-4144
 FAX (813) 664-1899
 CERTIFICATE OF AUTHORIZATION NO. 3114

APPROVED BY:
DAWN M. RATICAN, P.E.
 REGISTERED PROFESSIONAL ENGINEER
 FLORIDA CERTIFICATE NO. 60226

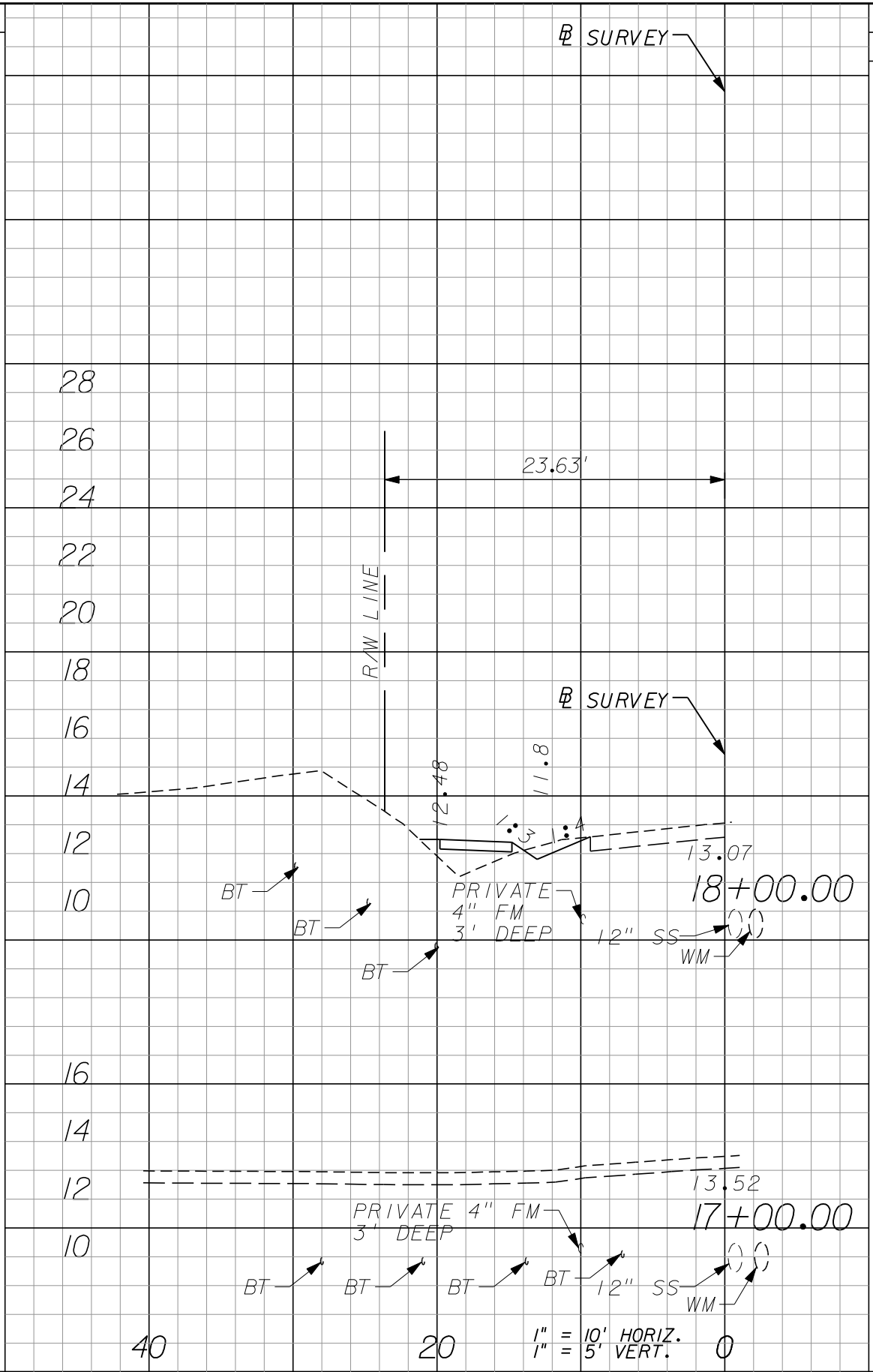
PUBLIC WORKS DEPARTMENT
 LEE COUNTY of SOUTHWEST FLORIDA TRANSPORTATION
 1500 MONROE STREET FORT MYERS, FLORIDA 33901
 (239) 479-8900 www.lee-county.com/publiworks/dot11e.htm

PLAN SHEET (4)
GLENWOOD AVENUE
STA. 41+80.00 TO STA. 49+11.44

SHEET
 12 of 23
 SHEETS



Regular		Exc.		Embankment	
A	V	A	V	A	V
2	3	0	3	0	3
0	1	2	8		



Regular		Exc.		Embankment	
A	V	A	V	A	V
1	9	3	10		

NO.	DATE	BY	REVISIONS - DESCRIPTION

AIM Engineering & Surveying, Inc.
 5802 BRECKENRIDGE PARKWAY STE. 100
 TAMPA, FLORIDA 33610
 TELEPHONE (888) 627-4144
 FAX (813) 664-1899
 CERTIFICATE OF AUTHORIZATION NO. 3114

APPROVED BY:
DAWN M. RATCAN, P.E.
 REGISTERED PROFESSIONAL ENGINEER
 FLORIDA CERTIFICATE NO. 60226

PUBLIC WORKS DEPARTMENT
 LEE COUNTY of
 SOUTHWEST FLORIDA TRANSPORTATION
 1500 MONROE STREET FORT MYERS, FLORIDA 33901
 (239) 479-8900 www.lee-county.com/publoworks/dot11e.htm

CROSS SECTIONS

⊕ SURVEY

⊕ SURVEY

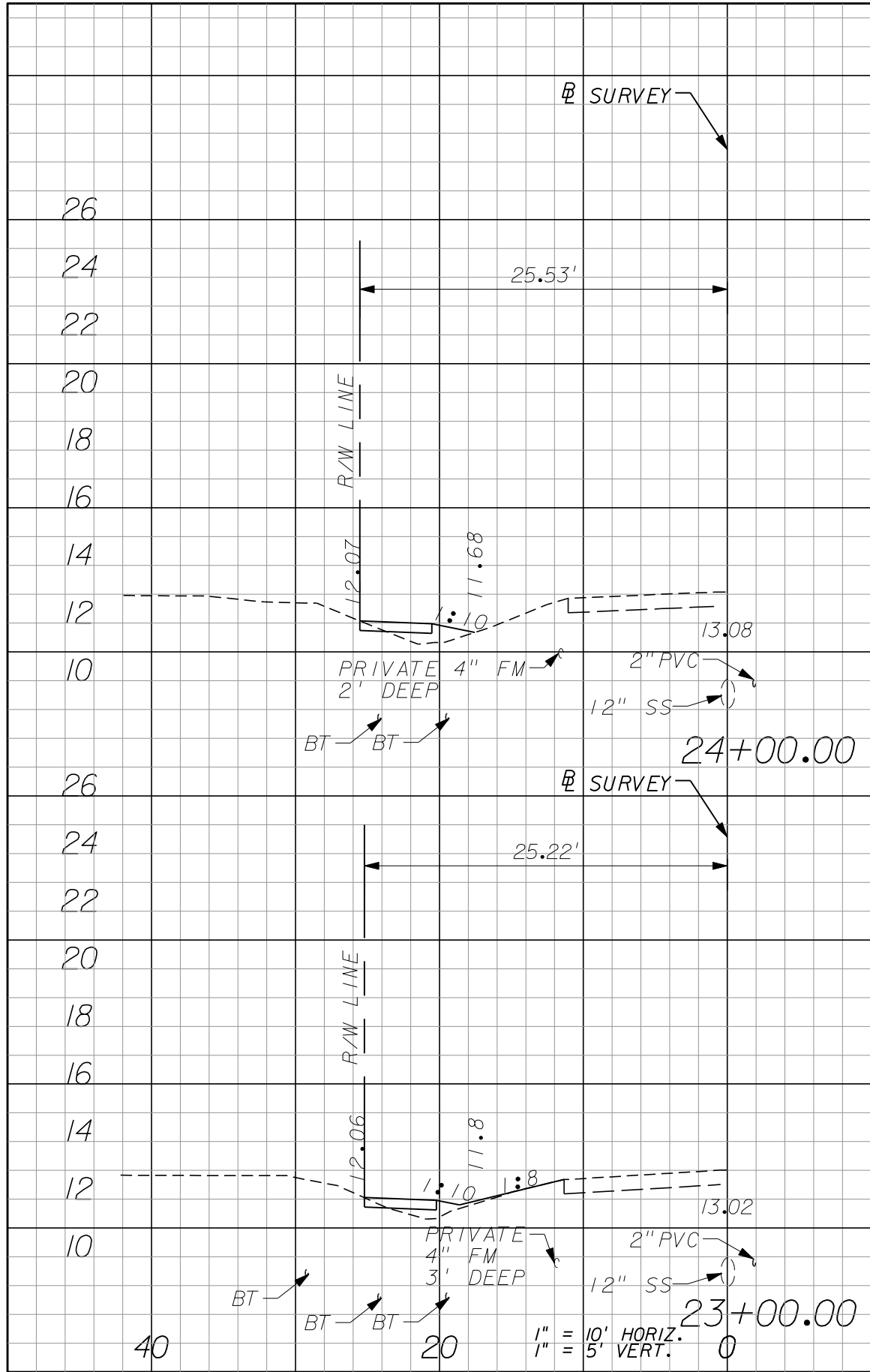
⊕ SURVEY

⊕ SURVEY

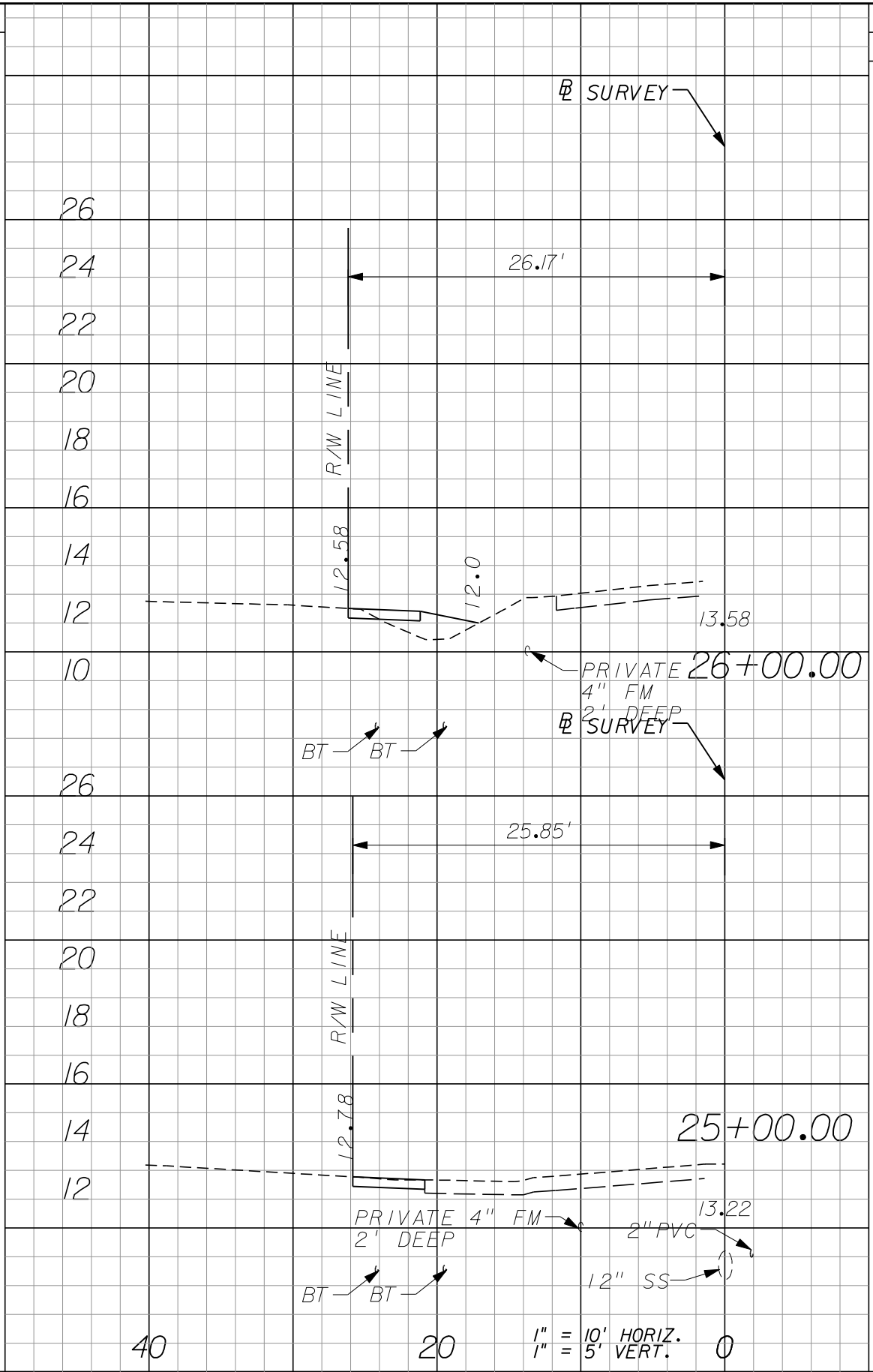
1" = 10' HORIZ.
 1" = 5' VERT.

1" = 10' HORIZ.
 1" = 5' VERT.

1" = 10' HORIZ.
 1" = 5' VERT.



Regular		Exc.		Embankment	
A	V	A	V	A	V
0	1	2	6	0	5



Regular		Exc.		Embankment	
A	V	A	V	A	V
1	4	3	6	2	4

NO.	DATE	BY	REVISIONS - DESCRIPTION

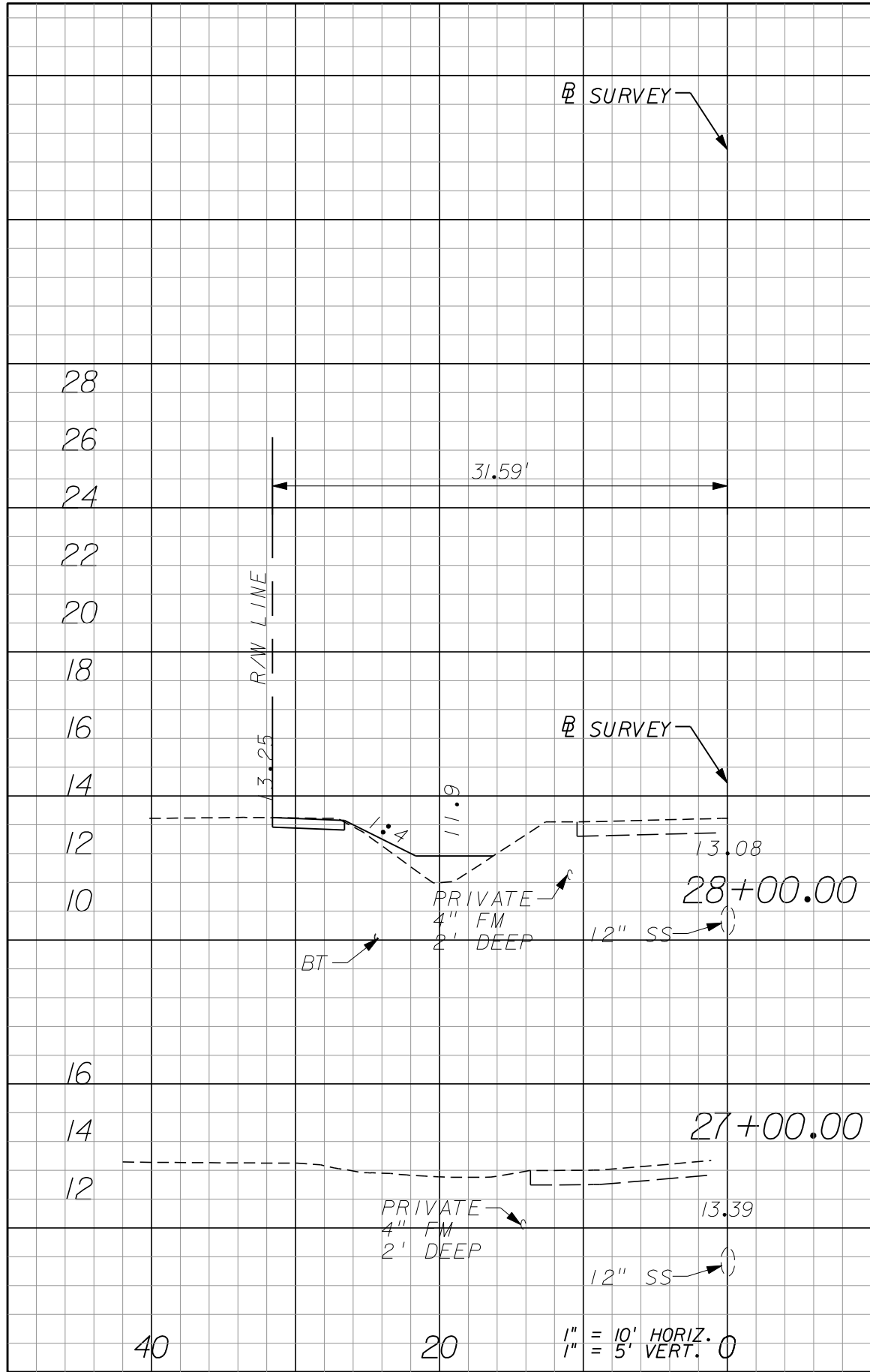
AIM Engineering & Surveying, Inc.
 5802 BRECKENRIDGE PARKWAY STE. 100
 TAMPA, FLORIDA 33610
 TELEPHONE (888) 627-4144
 FAX (813) 664-1899
 CERTIFICATE OF AUTHORIZATION NO. 3114

APPROVED BY:
DAWN M. RATICAN, P.E.
 REGISTERED PROFESSIONAL ENGINEER
 FLORIDA CERTIFICATE NO. 60226

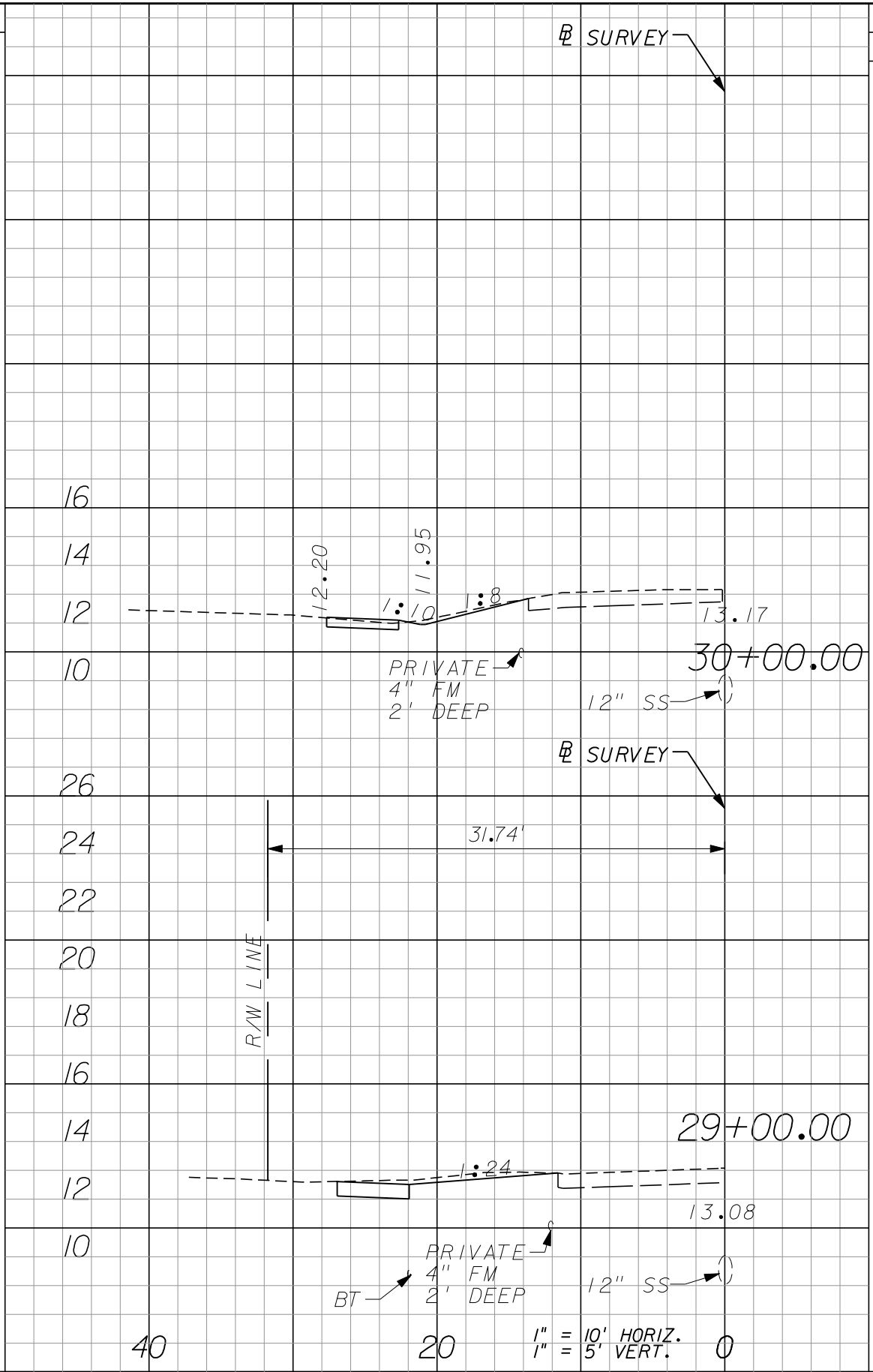
PUBLIC WORKS DEPARTMENT
 LEE COUNTY of
 SOUTHWEST FLORIDA TRANSPORTATION
 1500 MONROE STREET FORT MYERS, FLORIDA 33901
 (239) 479-8900 www.lee-county.com/publoworks/dot111e.htm

CROSS SECTIONS

SHEET
 16 of 23
 SHEETS



Regular		Exc.		Embankment	
A	V	A	V	A	V
2	8	5	26		



Regular		Exc.		Embankment	
A	V	A	V	A	V
6	14	0	8		
2	15	0	0		

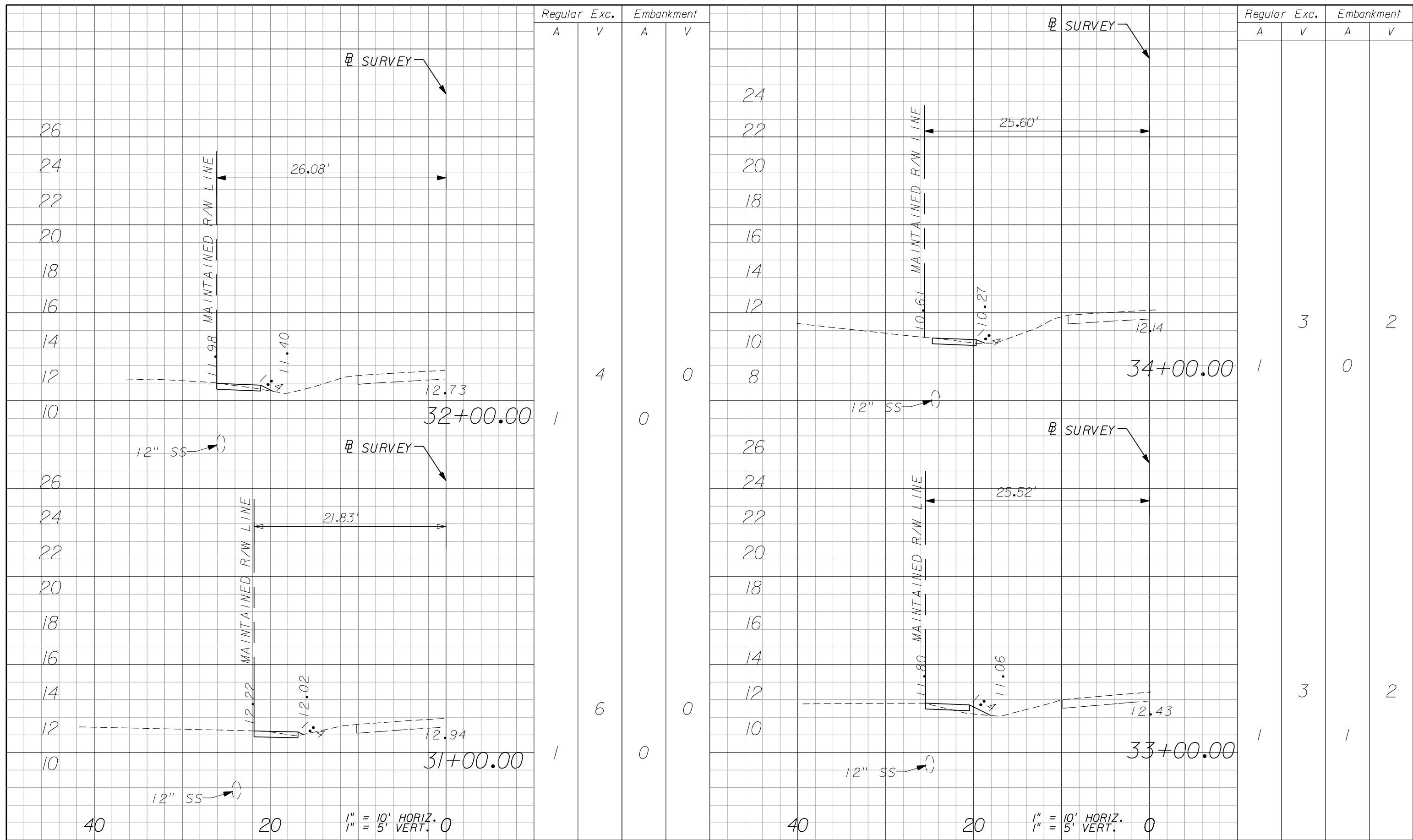
NO.	DATE	BY	REVISIONS - DESCRIPTION

AIM Engineering & Surveying, Inc.
 5802 BRECKENRIDGE PARKWAY STE. 100
 TAMPA, FLORIDA 33610
 TELEPHONE (888) 627-4144
 FAX (813) 664-1899
 CERTIFICATE OF AUTHORIZATION NO. 3114

APPROVED BY:
DAWN M. RATICAN, P.E.
 REGISTERED PROFESSIONAL ENGINEER
 FLORIDA CERTIFICATE NO. 60226

PUBLIC WORKS DEPARTMENT
 LEE COUNTY of
 SOUTHWEST FLORIDA TRANSPORTATION
 1500 MONROE STREET FORT MYERS, FLORIDA 33901
 (239) 479-8900 www.lee-county.com/publworks/dot11e.htm

CROSS SECTIONS



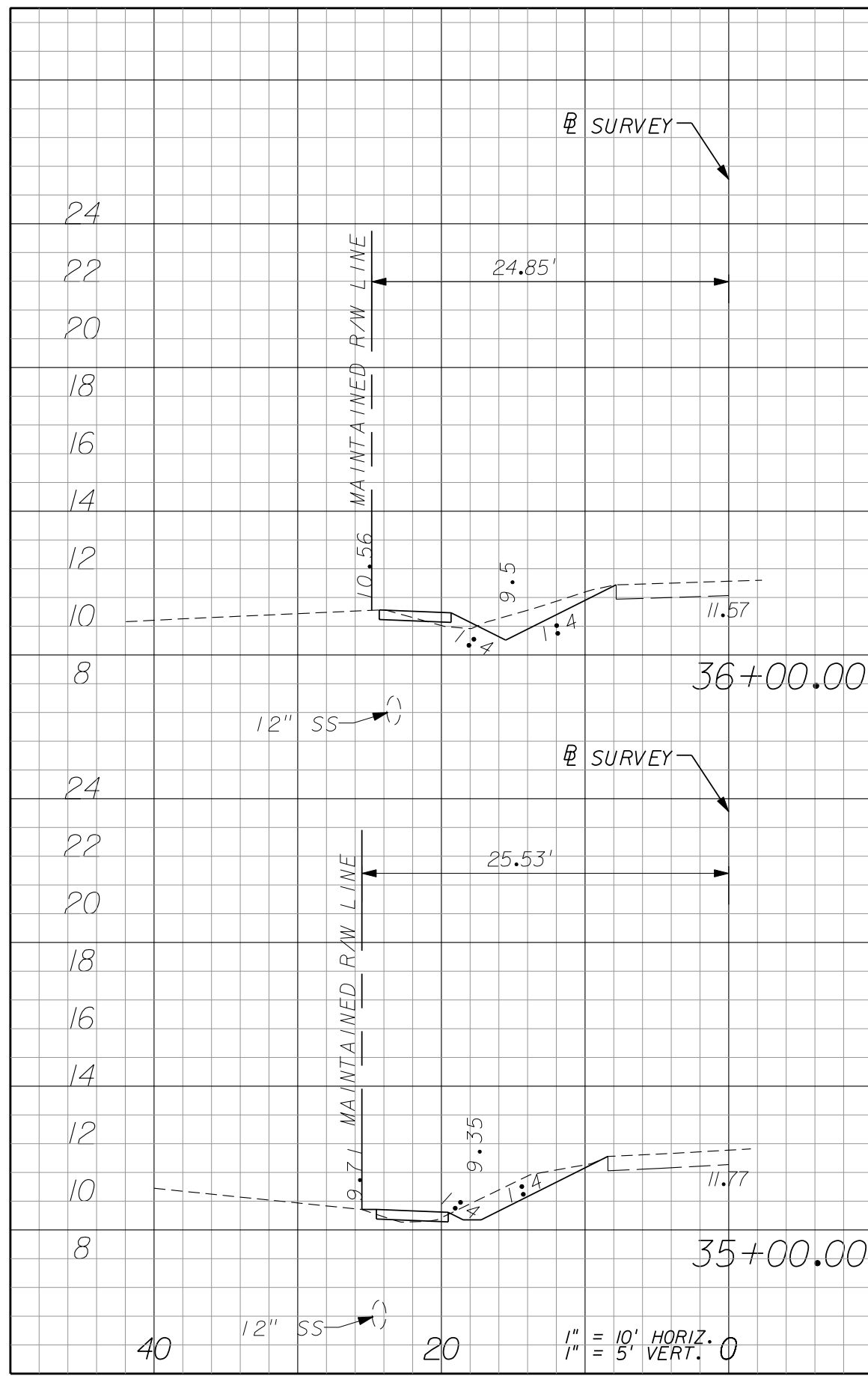
NO.	DATE	BY	REVISIONS - DESCRIPTION

AIM Engineering & Surveying, Inc.
 5802 BRECKENRIDGE PARKWAY STE. 100
 TAMPA, FLORIDA 33610
 TELEPHONE (888) 627-4144
 FAX (813) 664-1899
 CERTIFICATE OF AUTHORIZATION NO. 3114

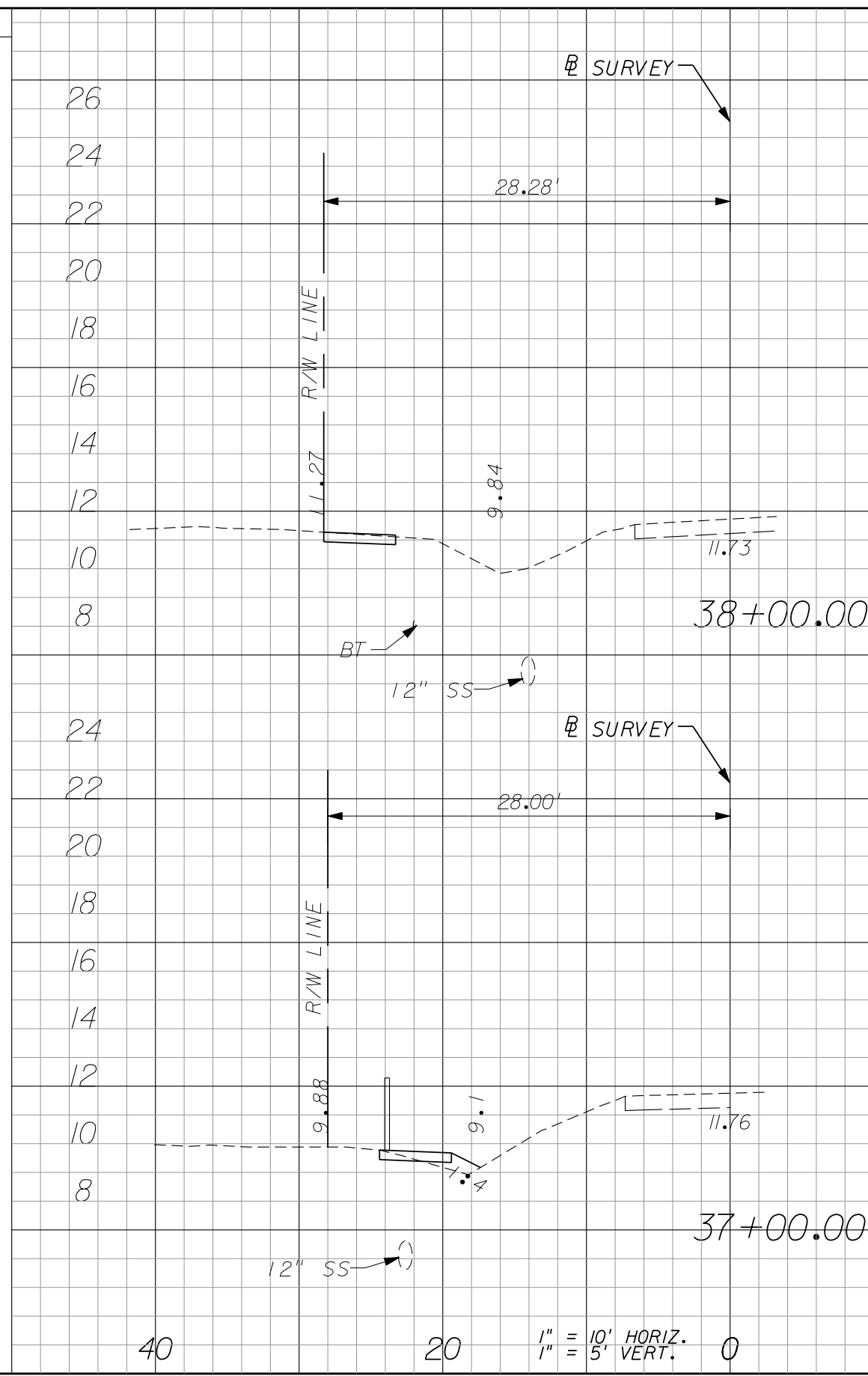
APPROVED BY:
DAWN M. RATCAN, P.E.
 REGISTERED PROFESSIONAL ENGINEER
 FLORIDA CERTIFICATE NO. 60226

PUBLIC WORKS DEPARTMENT
 LEE COUNTY of SOUTHWEST FLORIDA TRANSPORTATION
 1500 MONROE STREET FORT MYERS, FLORIDA 33901
 (239) 479-8900 www.lee-county.com/publiworks/dot111e.htm

CROSS SECTIONS



Regular		Exc.		Embankment	
A	V	A	V	A	V
5		19		1	



Regular		Exc.		Embankment	
A	V	A	V	A	V
2		4		0	
1		11		1	

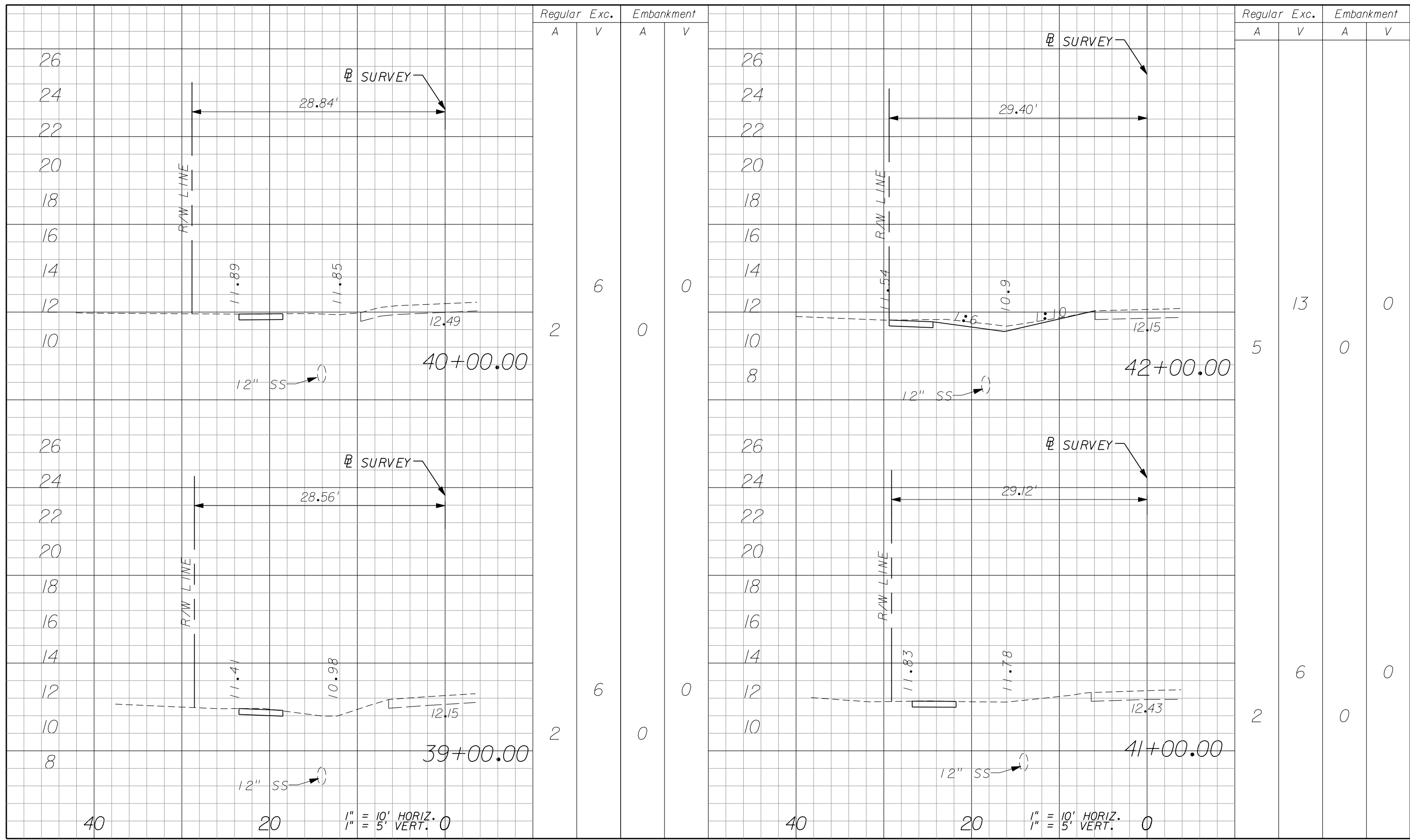
NO.	DATE	BY	REVISIONS - DESCRIPTION

AIM Engineering & Surveying, Inc.
 5802 BRECKENRIDGE PARKWAY STE. 100
 TAMPA, FLORIDA 33610
 TELEPHONE (888) 627-4144
 FAX (813) 664-1899
 CERTIFICATE OF AUTHORIZATION NO. 3114

APPROVED BY:
DAWN M. RATCAN, P.E.
 REGISTERED PROFESSIONAL ENGINEER
 FLORIDA CERTIFICATE NO. 60226

PUBLIC WORKS DEPARTMENT
 LEE COUNTY of SOUTH WEST FLORIDA TRANSPORTATION
 1500 MONROE STREET FORT MYERS, FLORIDA 33901
 (239) 479-8900 www.lee-county.com/publworks/do111e.htm

CROSS SECTIONS



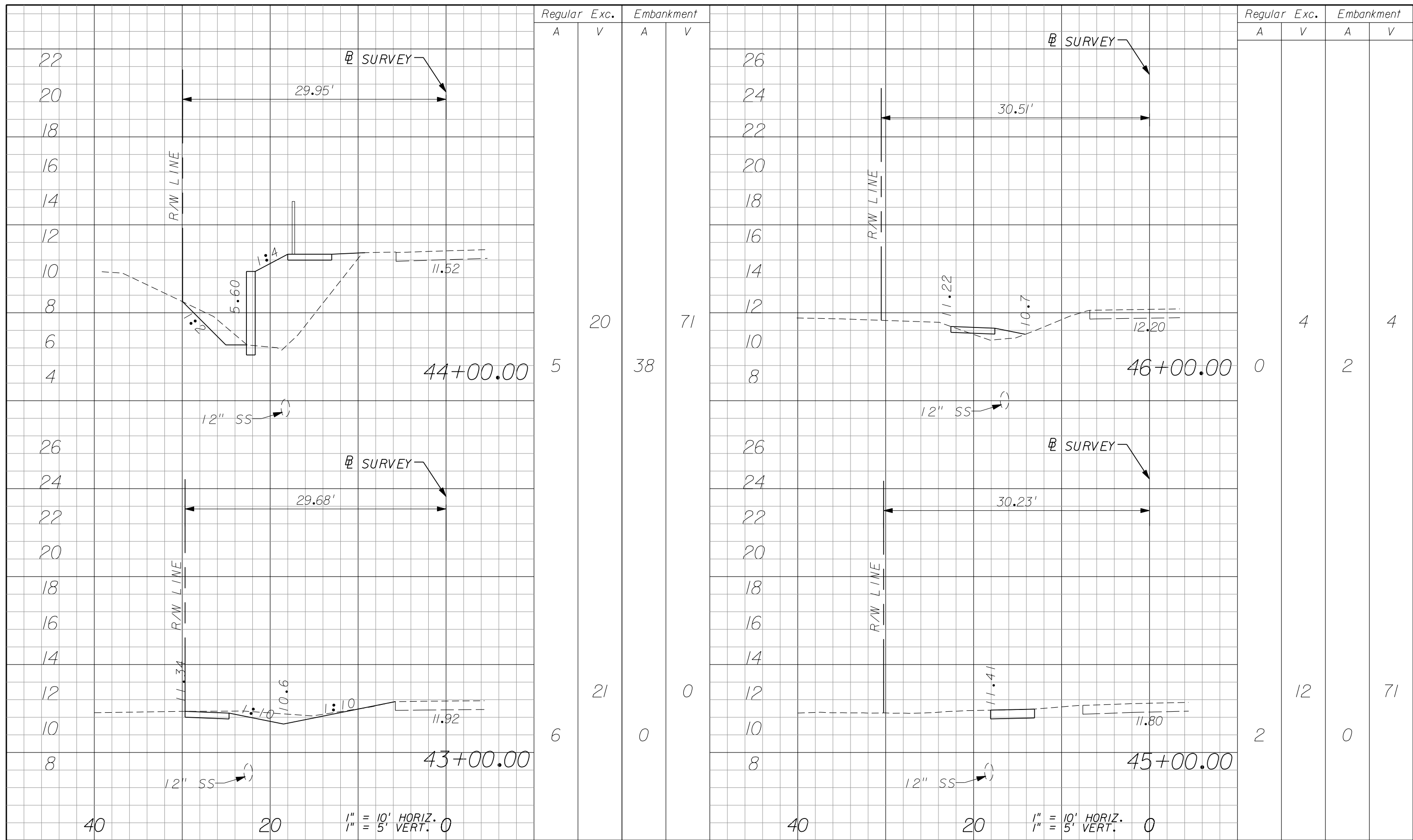
NO.	DATE	BY	REVISIONS - DESCRIPTION

AIM Engineering & Surveying, Inc.
 5802 BRECKENRIDGE PARKWAY STE. 100
 TAMPA, FLORIDA 33610
 TELEPHONE (888) 627-4144
 FAX (813) 664-1899
 REGISTERED PROFESSIONAL ENGINEER
 FLORIDA CERTIFICATE NO. 3114

APPROVED BY:
DAWN M. RATCAN, P.E.
 REGISTERED PROFESSIONAL ENGINEER
 FLORIDA CERTIFICATE NO. 60226

PUBLIC WORKS DEPARTMENT
 LEE COUNTY of SOUTHWEST FLORIDA TRANSPORTATION
 1500 MONROE STREET FORT MYERS, FLORIDA 33901
 (239) 479-8900 www.lee-county.com/publiworks/dot111e.htm

CROSS SECTIONS



Regular		Exc.		Embankment	
A	V	A	V	A	V
5		20		71	
				38	

Regular		Exc.		Embankment	
A	V	A	V	A	V
0		4		4	
				2	

Regular		Exc.		Embankment	
A	V	A	V	A	V
6		21		0	
				0	

Regular		Exc.		Embankment	
A	V	A	V	A	V
2		12		71	
				0	

1" = 10' HORIZ.
1" = 5' VERT.

1" = 10' HORIZ.
1" = 5' VERT.

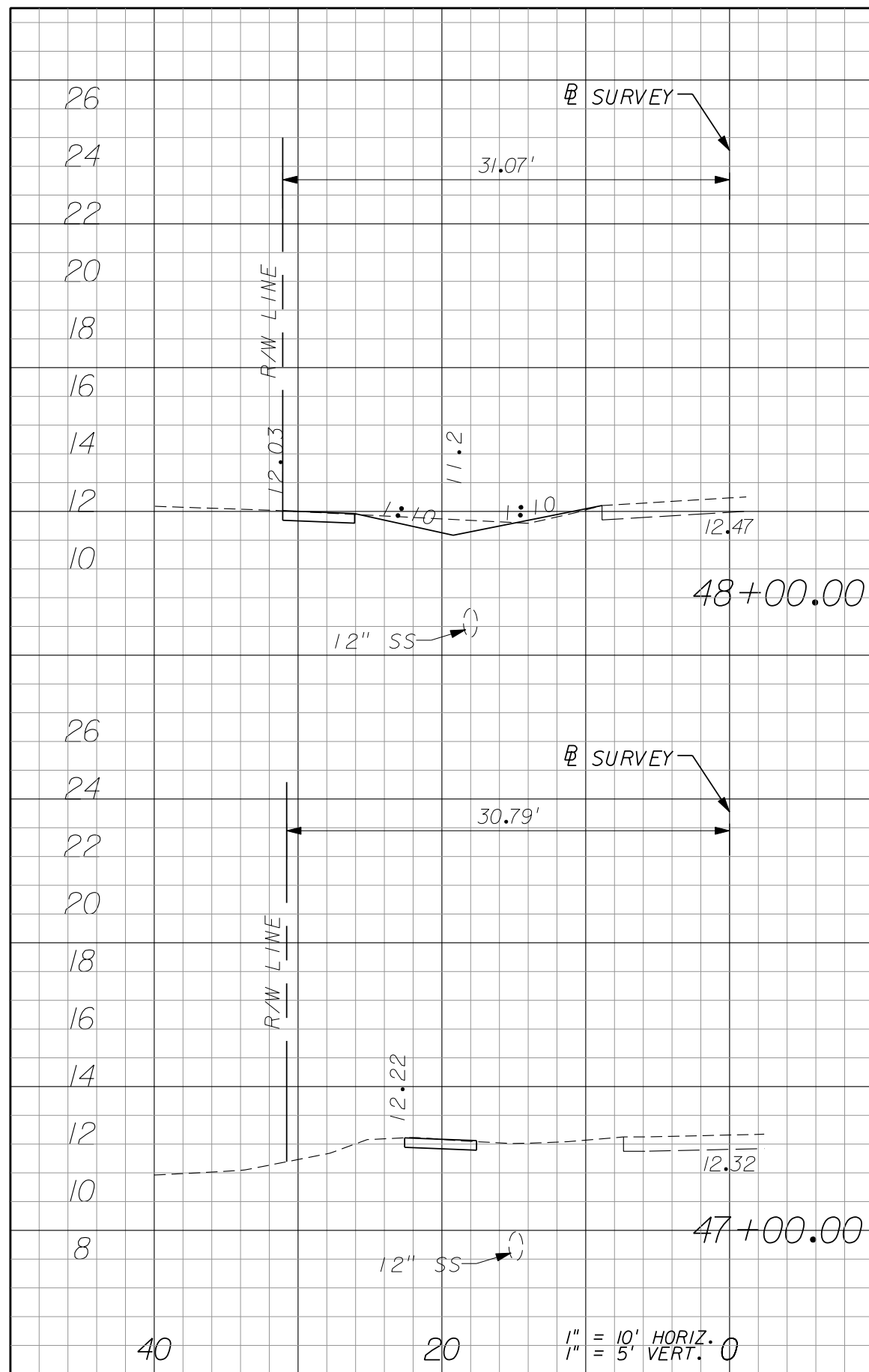
NO.	DATE	BY	REVISIONS - DESCRIPTION

AIM Engineering & Surveying, Inc.
 5802 BRECKENRIDGE PARKWAY STE. 100
 TAMPA, FLORIDA 33610
 TELEPHONE (888) 627-4144
 FAX (813) 664-1899
 CERTIFICATE OF AUTHORIZATION NO. 3114

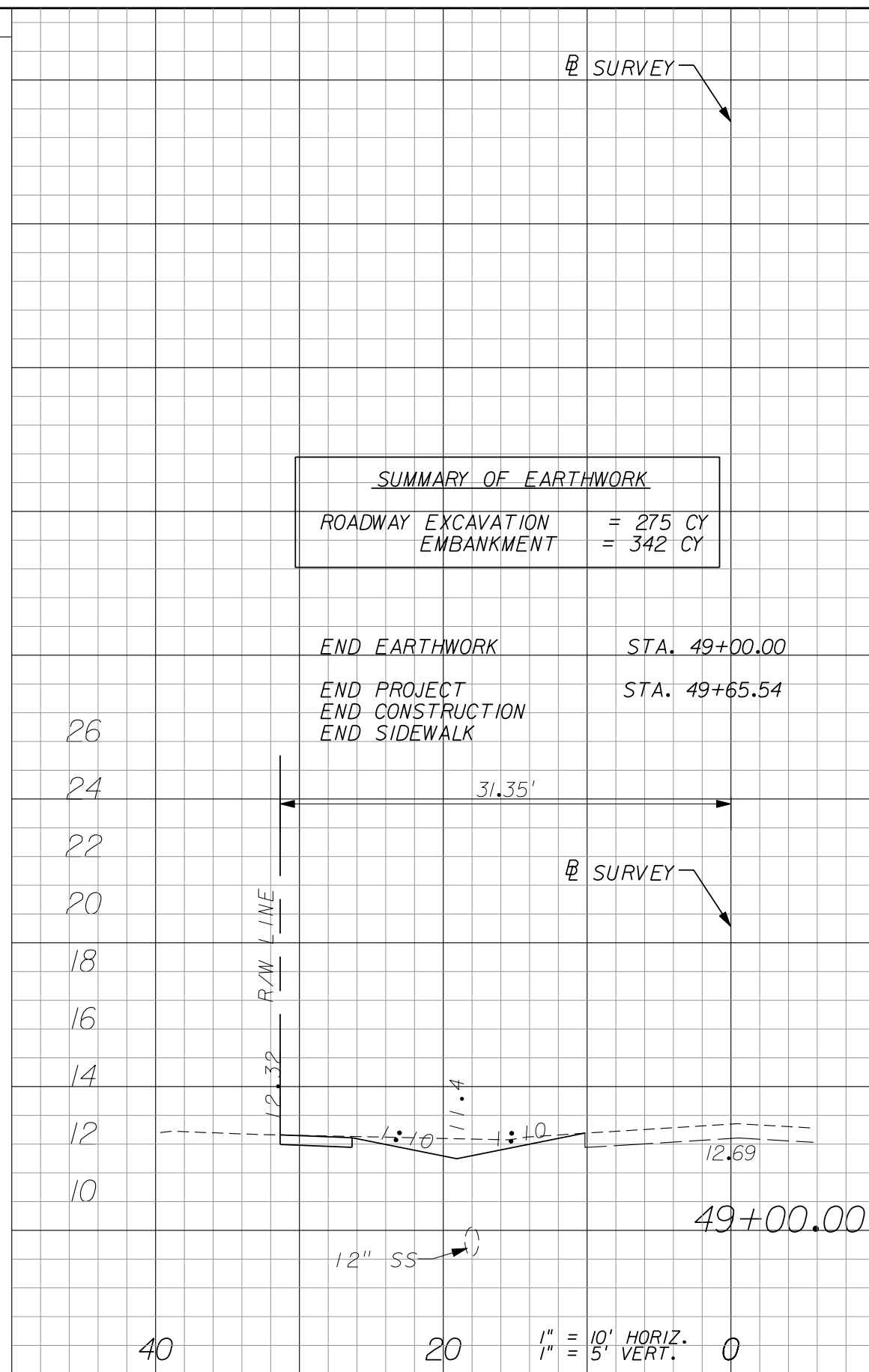
APPROVED BY:
DAWN M. RATCAN, P.E.
 REGISTERED PROFESSIONAL ENGINEER
 FLORIDA CERTIFICATE NO. 60226

PUBLIC WORKS DEPARTMENT
 LEE COUNTY of SOUTHWEST FLORIDA TRANSPORTATION
 1500 MONROE STREET FORT MYERS, FLORIDA 33901
 (239) 479-8900 www.lee-county.com/publloworks/d0111e.htm

CROSS SECTIONS



Regular		Exc.		Embankment	
A	V	A	V	A	V
5		12		0	1
2		4		0	4



SUMMARY OF EARTHWORK	
ROADWAY EXCAVATION	= 275 CY
EMBANKMENT	= 342 CY

END EARTHWORK STA. 49+00.00
 END PROJECT STA. 49+65.54
 END CONSTRUCTION
 END SIDEWALK

Regular		Exc.		Embankment	
A	V	A	V	A	V
7		22		0	1

NO.	DATE	BY	REVISIONS - DESCRIPTION

AIM Engineering & Surveying, Inc.
 5802 BRECKENRIDGE PARKWAY STE. 100
 TAMPA, FLORIDA 33610
 TELEPHONE (888) 627-4144
 FAX (813) 664-1899
 CERTIFICATE OF AUTHORIZATION NO. 3114

APPROVED BY:
DAWN M. RATCAN, P.E.
 REGISTERED PROFESSIONAL ENGINEER
 FLORIDA CERTIFICATE NO. 60226

PUBLIC WORKS DEPARTMENT
 LEE COUNTY of SOUTHWEST FLORIDA TRANSPORTATION
 1500 MONROE STREET FORT MYERS, FLORIDA 33901
 (239) 479-8900 www.lee-county.com/publiworks/do1111e.htm

CROSS SECTIONS

THE FOLLOWING NARRATIVE OF THE STORMWATER POLLUTION PREVENTION PLAN (SWPPP) CONTAINS REFERENCES TO THE STANDARD SPECIFICATION FOR ROAD AND BRIDGE CONSTRUCTION, THE DESIGN STANDARDS, AND OTHER PLANS SHEETS WITHIN THIS SET OF CONSTRUCTION PLANS. THE FIRST SHEET OF THE CONSTRUCTION PLANS (REFERRED TO AS THE KEY SHEET) CONTAINS AN INDEX OF ROADWAY PLANS. THE SWPPP INCLUDES SEVERAL ITEMS: THIS NARRATIVE DESCRIPTION, THE DOCUMENTS REFERENCED IN THIS NARRATIVE, THE CONTRACTOR'S APPROVED EROSION CONTROL PLAN (REQUIRED BY SPECIFICATION SECTION 104), AND REPORTS OF INSPECTIONS MADE DURING CONSTRUCTION.

SECTION 1.0

1.A. NATURE OF CONSTRUCTION ACTIVITY:

THIS PROJECT HAS BEEN DESIGNATED AS THE NEW CONSTRUCTION OF SIDEWALK ON THE NORTH SIDE OF GLENWOOD AVENUE FROM EAST OF PROSPECT AVENUE TO ORTIZ AVENUE. ACTIVITIES INCLUDE CLOSING OF THE ROADSIDE DITCH WITH AN ADEQUATE DRAINAGE SYSTEM AND CONVEYING THE RUNOFF TO THE EXISTING CROSS DRAINS. THE PROJECT IS APPROXIMATELY 0.75 MILES IN LENGTH AND IS LOCATED IN SECTION 9 WITHIN TOWNSHIP 44S AND RANGE 25E OF LEE COUNTY.

1.B. SEQUENCE OF MAJOR SOIL DISTURBING ACTIVITIES:

THE FOLLOWING SEQUENCE OF MAJOR ACTIVITIES SHALL BE FOLLOWED UNLESS THE CONTRACTOR CAN PROPOSE AN ALTERNATIVE PLAN THAT IS EQUAL TO OR BETTER AT CONTROLLING EROSION AND SEDIMENT AND IS APPROVED BY THE ENGINEER. THE DETAILED SEQUENCE OF CONSTRUCTION ACTIVITIES FOR THE ENTIRE PROJECT CAN VARY SIGNIFICANTLY FROM CONTRACTOR TO CONTRACTOR. AS REFERENCED IN SPECIFICATION 104, THE CONTRACTOR IS RESPONSIBLE FOR PROVIDING A DETAILED SEQUENCE OF CONSTRUCTION ACTIVITIES FOR ALL CONSTRUCTION ACTIVITIES ASSOCIATED WITH THIS PROJECT AND SHALL INCLUDE IT IN THE CONTRACTOR'S EROSION CONTROL PLAN.

STEPS:

1. INSTALL ADVANCE WARNING SIGNS AND WARNING DEVICES UTILIZING INDEXES 600, 601, 602
2. INSTALL EROSION CONTROL DEVICES
3. CONSTRUCT SIDEWALK
4. CONSTRUCT DRAINAGE IMPROVEMENTS
5. PLACE SOD
6. REMOVE EROSION CONTROL, WARNING SIGNS, AND WARNING DEVICES

1.C. AREA ESTIMATES:

- TOTAL SITE AREA = 2.6 AC
- TOTAL DISTURBED AREA = 1.4 AC

1.D. RUNOFF COEFFICIENTS FOR:

- GRASS AND OTHER PERVIOUS AREAS: C = 0.25
- IMPERVIOUS AREAS (ROADS, S/W, BLDGS, ETC): C = 0.95
- DISTURBED AREAS (DURING CONSTRUCTION): C = 0.40

CALCULATED WEIGHTED RUNOFF COEFFICIENT:

RUNOFF COEFFICIENT BEFORE CONSTRUCTION CW(B):

- IMPERVIOUS AREA = 1.1 AC
- PERVIOUS AREA = 1.5 AC

$CW(B) = (1.1AC(0.95) + 1.5AC(0.25)) / 2.6AC = 0.55$

RUNOFF COEFFICIENTS DURING CONSTRUCTION CW(D):

USING PHASE 1 AS WORSE CASE SCENARIO:

- AREA UNDER CONSTRUCTION (SIDEWALKS) 0.5 AC

$CW(D) = (1.1AC(0.95) + 0.5AC(0.4) + 1.0AC(0.25)) / 2.6AC = 0.58$

RUNOFF COEFFICIENTS AFTER CONSTRUCTION CW(A):

- IMPERVIOUS AREA = 1.6 AC
- PERVIOUS AREA = 1.0 AC

$CW(A) = (1.6 AC (.95) + 1.0 AC (.25) / 2.6 AC = 0.68$

1.D.1. TO SUMMARIZE, PER NOTE 1.D ABOVE:

THE RUNOFF COEFFICIENT AFTER CONSTRUCTION IS HIGHER THAN THE RUNOFF COEFFICIENT BEFORE CONSTRUCTION DUE TO THE ADDITION OF SIDEWALK.

1.E. SOILS DATA:

BASED ON THE USDA NRCS LEE COUNTY SCS SOIL SURVEY, THE PROJECT SOILS CONSIST OF HALLANDALE FINE SAND, IMMOKALEE-URBAN LAND COMPLEX, AND ISLES FINE SAND (DEPRESSIONAL).

OUTFALL LOCATIONS:

THERE ARE SIX OUTFALL LOCATIONS, ALL OF WHICH ARE EXISTING CROSS DRAINS. A 24" LOCATED AT PROSPECT AVE.; DBL-24" EAST OF NEW YORK AVE.; A 24" EAST AND A 18" WEST OF NUNA AVE.; A 36" LOCATED WEST OF CAROLINA AVE; AND A 42" LOCATED WEST OF FIGUERA AVE. THESE CROSS DRAINS ULTIMATELY DISCHARGE TO BILLY CREEK.

1.F. SITE MAP:

THE TYPICAL SECTION SHEET AND LOCATION MAP ON THE KEY SHEET DESCRIBE AND LOCATE THE SITE.

AREAS OF SOIL DISTURBANCE:

SOIL DISTURBANCE WILL EXIST WHERE THERE IS CONSTRUCTION OF THE SIDEWALK.

AREAS NOT TO BE DISTURBED:

SEE AREAS SHOWN ON ROADWAY SHEETS.

LOCATIONS OF CONTROLS:

DETAILS OF SIDEWALK CONTROLS ARE DESCRIBED IN THE CONSTRUCTION PLANS.

SURFACE WATERS:

NONE.

DISCHARGE POINTS TO SURFACE WATERS:

THE ROADSIDE DITCH WILL CONVEY THE GLENWOOD AVENUE RUNOFF THROUGH A SERIES OF STORM DRAIN SYSTEMS TO THE EXISTING CROSS DRAINS. THERE ARE NO DIRECT DISCHARGES TO DESIGNATED SURFACE WATERS.

1.G. WETLAND IMPACTS:

WETLAND IMPACTS ARE NOT ANTICIPATED FOR THIS PROJECT.

SECTION 2.0

CONTROLS NARRATIVE-SEQUENCE OF ACTIVITIES AND IMPLEMENTATION OF EROSION CONTROL MEASURES:

ALL ITEMS REPRESENTED IN THE FOLLOWING DISCUSSION ARE TREATED IN DETAIL IN THE CONSTRUCTION PLAN SET, SUPPLEMENTED BY THE "FLORIDA DEPARTMENT OF TRANSPORTATION STANDARD SPECIFICATIONS FOR ROAD AND BRIDGE CONSTRUCTION" (2007) AND THE "FDOT DESIGN STANDARDS" (2006).

THE CONTRACTOR WILL BE REQUIRED TO PREPARE A SITE SPECIFIC EROSION CONTROL PLAN ALONG WITH A SPECIFIC CONSTRUCTION SCHEDULE FOR IMPLEMENTATION. THE CONTRACTOR WILL BE REQUIRED TO MODIFY THE PLAN OF MATERIALS TO ADAPT TO SEASONAL VARIATIONS. THE CONTRACTOR IS RESPONSIBLE FOR DETERMINING IF ADDITIONAL CONTROLS ARE REQUIRED AND FOR ASSISTING IN AND OBTAINING DEPLOYMENT SCHEDULES FOR IMPLEMENTATION OF APPLICABLE EROSION CONTROL DEVICES. IMPLEMENTATION PROCEDURES ARE SUPPLIED IN THE FDOT STANDARD INDEXES 100 THROUGH 106.

THE CONTRACTOR IS ADVISED THAT THE CONTRACT DRAWINGS ONLY INDICATE EROSION, SEDIMENT, AND TURBIDITY CONTROLS AT LOCATIONS DETERMINED IN THE DESIGN PROCESS. HOWEVER, THE CONTRACTOR IS REQUIRED TO UPDATE THE SWPPP TO REFLECT ANY ADDITIONAL CONTROLS NECESSARY TO PREVENT THE POSSIBILITY OF SILTING ANY ADJACENT LOWLAND PARCEL, RECEIVING WATER BODY, OR OTHERWISE VIOLATING STATE AND FEDERAL PERMIT REQUIREMENTS.

SECTION 2.0 CONTROLS

2.A. EROSION AND SEDIMENT CONTROLS:

THE FOLLOWING DISCUSSION DEFINES GENERAL GUIDELINES FOR THE SEQUENCES OF CONSTRUCTION AND THE USE OF STABILIZATION AND STRUCTURAL PRACTICES. AS REFERENCED IN SPECIFICATION 104, THE CONTRACTOR SHALL DESCRIBE THE PROPOSED STABILIZATION AND STRUCTURAL PRACTICES BASED ON THE CONTRACTOR'S PROPOSED TRAFFIC CONTROL PLAN AND INCLUDE IT IN HIS EROSION CONTROL PLAN. ALL ITEMS REPRESENTED IN THE FOLLOWING DISCUSSION ARE TREATED IN DETAIL IN THE "FLORIDA DEPARTMENT OF TRANSPORTATION STANDARD SPECIFICATIONS FOR ROAD AND BRIDGE CONSTRUCTION". THE CONTRACTOR WILL GENERATE AN IMPLEMENTATION SCHEDULE FOR EACH PHASE OF CONSTRUCTION OPERATIONS OR ACTIVITIES. ALL PHASES OF CONSTRUCTION: INSTALL EROSION CONTROL MEASURES AS SHOWN IN THE EROSION CONTROL PLAN.

CONTROL DUST GENERATION BY APPROPRIATE EROSION CONTROL MEASURES AS APPROVED BY THE ENGINEER.

2.A.1 STABILIZATION PRACTICES - PERMANENT:

ASPHALT AND SOD SURFACES IN ACCORDANCE WITH SPECIFICATION SECTION 575. STABILIZATION MEASURES SHALL BE INITIATED FOR EROSION AND SEDIMENT CONTROL ON DISTURBED AREAS AS SOON AS PRACTICAL, BUT IN NO CASE AFTER MORE THAN 7 DAYS, IN PORTIONS OF THE SITE WHERE CONSTRUCTION ACTIVITIES HAVE TEMPORARILY OR PERMANENTLY CEASED. PERMANENT SOIL EROSION CONTROL MEASURES FOR ALL SLOPES, CHANNELS, DITCHES OR ANY DISTURBED LAND AREAS SHALL BE COMPLETED IMMEDIATELY AFTER FINAL GRADING. WHEN IT IS NOT POSSIBLE TO PERMANENTLY PROTECT A DISTURBED AREA IMMEDIATELY AFTER GRADING OPERATION, TEMPORARY EROSION CONTROL MEASURES SHALL BE INSTALLED. ALL TEMPORARY PROTECTION SHALL BE MAINTAINED UNTIL PERMANENT MEASURES ARE IN PLACE AND ESTABLISHED.

2.A.2 STRUCTURAL PRACTICES - TEMPORARY:

THE CONTRACTOR SHALL FURNISH, INSTALL, MAINTAIN AND SUBSEQUENTLY REMOVE, ALL NECESSARY EROSION CONTROL, INCLUDING BUT NOT LIMITED TO SILT FENCES, ITEMS AS INDICATED WITHIN THE CONTRACT DOCUMENTS, CONTRACTOR'S EROSION CONTROL PLAN, OR AS REQUIRED PER APPLICABLE STANDARDS OR THE PROJECT ENGINEER. UTILIZE ROCK BAGS, SYNTHETIC BALE, SILT FENCE, & TURBIDITY BARRIER IN ACCORDANCE WITH INDEX 102 AND SPECIFICATION 104. ALL SEDIMENT CONTROLS SHALL BE IN PLACE PRIOR TO INITIATING SOIL DISTURBING ACTIVITIES THAT WILL OCCUR UPSTREAM OF THE PROPOSED CONTROL. AS REFERENCED IN SPECIFICATION 104, THE CONTRACTOR'S EROSION CONTROL PLAN SHALL DESCRIBE THE PROPOSED STRUCTURAL PRACTICES TO CONTROL OR TRAP SEDIMENT AND OTHERWISE PREVENT THE DISCHARGE OF POLLUTANTS GENERATED FROM EXPOSED AREAS OF THE SITE.

2.B. STORMWATER MANAGEMENT:

STORMWATER POLLUTION CONTROL UPON CONSTRUCTION COMPLETION WILL BE ACCOMPLISHED THROUGH THE USE OF STORM SEWER CONVEYANCE AND CONTROLLED DISCHARGE FROM THE ROADSIDE DITCHES/SWALES TO EACH OUTFALL. THE CONTRACTOR SHALL PREVENT UNAUTHORIZED MATERIAL FROM ENTERING SURFACE WATERS AND WETLAND AREAS ADJACENT TO THE PROJECT.

SECTION 3.0 OTHER CONTROLS

3.A.1 WASTE DISPOSAL:

THE CONTRACTOR'S EROSION CONTROL PLAN SHALL DESCRIBE THE PROPOSED METHODS TO PREVENT THE DISCHARGE OF SOLID MATERIALS, INCLUDING BUILDING MATERIALS, TO WATERS OF THE UNITED STATES.

3.A.2 OFFSITE VEHICLE TRACKING AND DUST CONTROL:

CONTROL METHODS:

1. USE OF STABILIZED ENTRANCE OR SOIL TRACKING PREVENTION DEVICES AS REQUIRED IN ACCORDANCE WITH STANDARD INDEX 106. SEE NOTE 3.A.2.B BELOW.
2. LOADED HAUL TRUCKS TO BE COVERED BY TARPULIN.

THE CONTRACTOR'S EROSION CONTROL PLAN SHALL DESCRIBE THE PROPOSED METHODS FOR MINIMIZING OFFSITE VEHICLE TRACKING OF SEDIMENTS AS WELL AS THE GENERATION OF DUST.

3.A.2.A OTHER - EXCESS DIRT AND DUST:

EXCESS DIRT ON ROADWAYS SHALL BE REMOVED DAILY. THE CONTRACTOR SHALL UTILIZE ROADWAY SWEEPERS IN CONJUNCTION WITH DUST GENERATING ACTIVITIES (SUCH AS EXCAVATION OPERATIONS) AS A MEANS TO PROVIDE POLLUTION CONTROL.

THE CONTRACTOR'S EROSION CONTROL PLAN SHALL DESCRIBE THE PROPOSED METHODS FOR MINIMIZING OFFSITE VEHICLE TRACKING OF SEDIMENTS AND THE GENERATION OF DUST.

3.A.2.B CONSTRUCTION ENTRANCES:

THE CONTRACTOR, AT HIS EXPENSE, SHALL BE RESPONSIBLE FOR THE CONSTRUCTION AND MAINTENANCE OF THE PROJECT CONSTRUCTION ENTRANCE OR ENTRANCES THAT PROVIDE ACCESS TO PUBLIC ROADWAYS FROM ONSITE AND OFFSITE STOCKPILE LOCATIONS. THE CONTRACTOR'S PROPOSED CONSTRUCTION ENTRANCE(S) SHALL PREVENT UNAUTHORIZED MATERIALS FROM ENTERING WATERWAYS. THE PROJECT ENGINEER SHALL REVIEW AND APPROVE THE PROPOSED CONSTRUCTION ENTRANCE.

THE CONTRACTOR SHALL CONTACT THE COUNTY PERMITS COORDINATOR IF ANY NON-PERMITTED IMPACT OCCURS TO WETLANDS DURING CONSTRUCTION.

3.A.3 STATE AND LOCAL REGULATIONS FOR WASTE DISPOSAL, SANITARY SEWER, OR SEPTIC SYSTEM REGULATIONS:

ALL SANITARY WASTE WILL BE COLLECTED FROM PORTABLE UNITS BY A LICENSED SANITARY WASTE MANAGEMENT CONTRACTOR AND DISPOSED OF IN ACCORDANCE WITH ALL LOCAL AND STATE REGULATIONS. AS REFERENCED IN SPECIFICATION 104, THE CONTRACTOR'S EROSION CONTROL PLAN SHALL DESCRIBE THE PROPOSED METHODS TO COMPLY WITH LOCAL AND STATE REGULATIONS FOR WASTE DISPOSAL, AND SANITARY SEWER OR SEPTIC SYSTEMS.

3.A.4 FERTILIZERS AND PESTICIDES:

THE CONTRACTOR'S EROSION CONTROL PLAN SHALL DESCRIBE THE PROCEDURES FOR APPLYING FERTILIZERS AND PESTICIDES. THE PROPOSED PROCEDURES SHALL COMPLY WITH APPLICABLE SUBSECTIONS OF EITHER SECTION 570 OR 577 OF THE STANDARD SPECIFICATIONS.

3.B NON-STORMWATER DISCHARGES:

THE CONTRACTOR'S EROSION CONTROL PLAN SHALL IDENTIFY ALL ANTICIPATED NON-STORMWATER DISCHARGES (EXCEPT FLOWS FROM FIRE-FIGHTING ACTIVITIES). THE CONTRACTOR SHALL DESCRIBE THE PROPOSED MEASURES TO PREVENT POLLUTION OF THESE NON-STORMWATER DISCHARGES. WHEN THE CONTRACTOR ENCOUNTERS A SPILL, CONSTRUCTION WILL STOP AND WORK WILL NOT RESUME UNTIL DIRECTED BY THE PROJECT ENGINEER. DISPOSITION OF HAZARDOUS WASTE WILL BE MADE IN ACCORDANCE WITH THE REQUIREMENTS AND REGULATIONS OF LOCAL, STATE, AND/OR FEDERAL AGENCIES HAVING JURISDICTION.

IF CONTAMINATED SOIL OR GROUNDWATER IS ENCOUNTERED, THE CONTRACTOR SHALL CONTACT THE COUNTY ENGINEER.

SECTION 4.0 MAINTENANCE

ITEM	MAINTENANCE	PROPOSED REPLACEMENT INTERVAL
SILT FENCE	SPEC 104	AS NEEDED
SYNTHETIC BALE	SPEC 104	AS NEEDED
STAKED TURBIDITY BARRIER	SPEC 104	AS NEEDED

EROSION DEPOSITS THAT REACH 1/2 THE HEIGHT OF THE SYNTHETIC BALE SHALL BE REMOVED BY THE CONTRACTOR. EROSION DEPOSITS THAT REACH 1/3 THE HEIGHT OF THE SILT FENCE SHALL BE REMOVED BY THE CONTRACTOR.

THE CONTRACTOR'S EROSION CONTROL PLAN SHALL PROVIDE A PLAN FOR MAINTAINING ALL EROSION AND SEDIMENT CONTROLS THROUGHOUT CONSTRUCTION.

THE PROPOSED REPLACEMENT INTERVAL FOR EROSION CONTROL DEVICES IS ONLY AN ESTIMATE. IF, AFTER THE PROPOSED REPLACEMENT INTERVAL EXPIRES, THE EROSION CONTROL DEVICES ARE STILL FUNCTIONING PROPERLY (I.E. DURING THE DRY SEASON) THE EROSION CONTROL DEVICES SHOULD REMAIN IN PLACE UNTIL THEY NO LONGER FUNCTION AS ORIGINALLY DESIGNED.

SECTION 5.0 INSPECTIONS

CONTRACTOR'S QUALIFIED PERSONNEL SHALL INSPECT THE FOLLOWING ITEMS EVERY SEVEN CALENDAR DAYS AND WITHIN 24 HOURS OF THE END OF A STORM THAT IS 0.50" OR GREATER. THE CONTRACTOR WILL REPORT ALL INSPECTION FINDINGS AND CORRECTIVE ACTIONS TAKEN AS A RESULT OF THE INSPECTION. THE CONTRACTOR WILL SIGN EACH INSPECTION REPORT AND SUBMIT IT WEEKLY TO THE ENGINEER. WHERE SITES HAVE BEEN FINALLY STABILIZED, INSPECTIONS SHALL BE CONDUCTED AT LEAST ONCE EVERY MONTH. IT IS THE CONTRACTOR'S RESPONSIBILITY TO INSTALL AND MAINTAIN THE RAIN GAUGE AT THE PROJECT SITE AND RECORD DAILY RAINFALL.

AREAS TO BE INSPECTED FOLLOWING FINAL STABILIZATION OF THE PROJECT SITE SHALL INCLUDE:

- STRUCTURAL CONTROLS.
- STORMWATER MANAGEMENT SYSTEMS.
- LOCATIONS WHERE VEHICLES ENTER & EXIT SITE.
- POINTS OF DISCHARGE TO WATERS OF THE UNITED STATES.
- POINTS OF DISCHARGE TO MUNICIPAL SEPARATE STORM SEWER SYSTEMS.
- DISTURBED AREAS OF THE SITE THAT HAVE NOT BEEN PERMANENTLY STABILIZED.

SECTION 6.0 DEWATERING

THE CONTRACTOR IS REQUIRED TO OBTAIN ALL DEWATERING PERMITS AS REQUIRED BY STATE AGENCIES PRIOR TO COMMENCEMENT OF CONSTRUCTION ACTIVITIES THAT REQUIRE DEWATERING. SEE SFWMD RULES AND REGULATIONS FOR SPECIFIC REQUIREMENTS FOR DEWATERING.

ALL SCHEDULING CONFLICTS AND COSTS INCURRED BY THE CONTRACTOR TO COMPLY WITH THE DEWATERING PERMITTING PRICES WILL BE INCIDENTAL COSTS ASSOCIATED WITH THE PAY ITEMS FOR INSTALLATION OF THE FEATURE WHICH REQUIRES THE DISCHARGE OF GROUND WATER.

COPIES OF THE OBTAINED STATE PERMITS FOR DEWATERING SHALL BE SUBMITTED TO THE PROJECT ENGINEER PRIOR TO ANY DEWATERING (PUMPING) ACTIVITIES. NOTE THAT THE INITIAL TEST IS TO BE CONDUCTED PRIOR TO ACTUAL OFFSITE DEWATERING RESULTING FROM CONSTRUCTION ACTIVITIES.

NO.	DATE	BY	REVISIONS - DESCRIPTION

AIM Engineering & Surveying, Inc.
 5802 BRECKENRIDGE PARKWAY STE. 100
 TAMPA, FLORIDA 33610
 TELEPHONE (888) 627-4144
 FAX (813) 664-1899
 CERTIFICATE OF AUTHORIZATION NO. 3114

APPROVED BY:
DAWN M. RATCAN, P.E.
 REGISTERED PROFESSIONAL ENGINEER
 FLORIDA CERTIFICATE NO. 60226

PUBLIC WORKS DEPARTMENT
 LEE COUNTY of
 SOUTHWEST FLORIDA TRANSPORTATION
 1500 MONROE STREET FORT MYERS, FLORIDA 33901
 (239) 479-8900 www.lee-county.com/publlworks/doi1116.htm

STORMWATER POLLUTION PREVENTION PLAN

SHEET
 23 of 23
 SHEETS