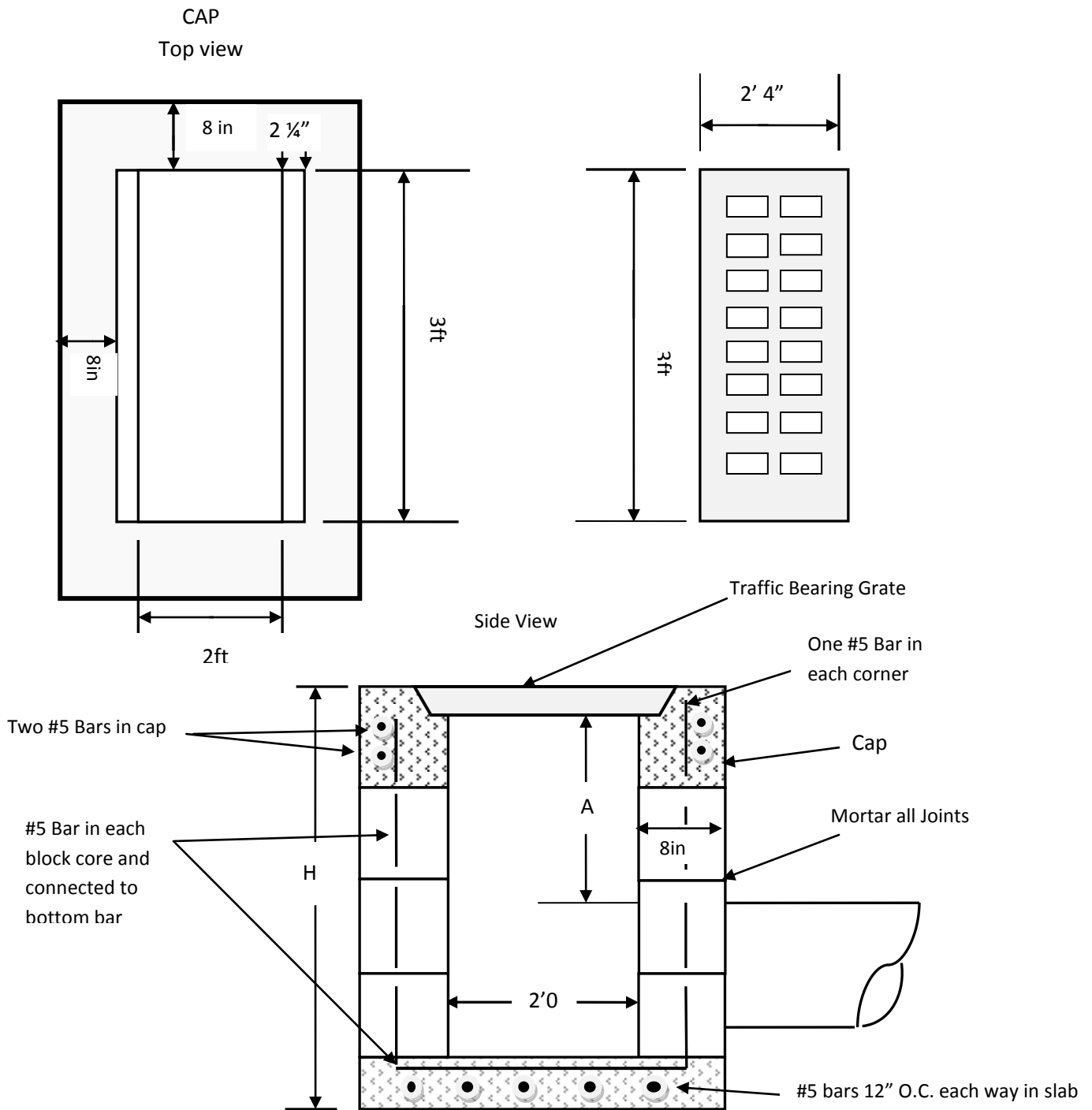


LEE COUNTY D.O.T.

CATCH BASIN SPECIFICATION



1. All reinforcing continuous at all corners
2. Concrete block cores must be filled with concrete
3. All concrete must meet ACI standards for 3000psi concrete
4. Concrete block must conform to ASTM C-90
5. Joints between concrete block and pipe must be completely sealed with mortar or concrete.
6. If "H" is greater than 4ft use FDOT Design Standards
7. Dimension "A" shall be 0.35 min. for residential and .50 for commercial