

Tables and Charts

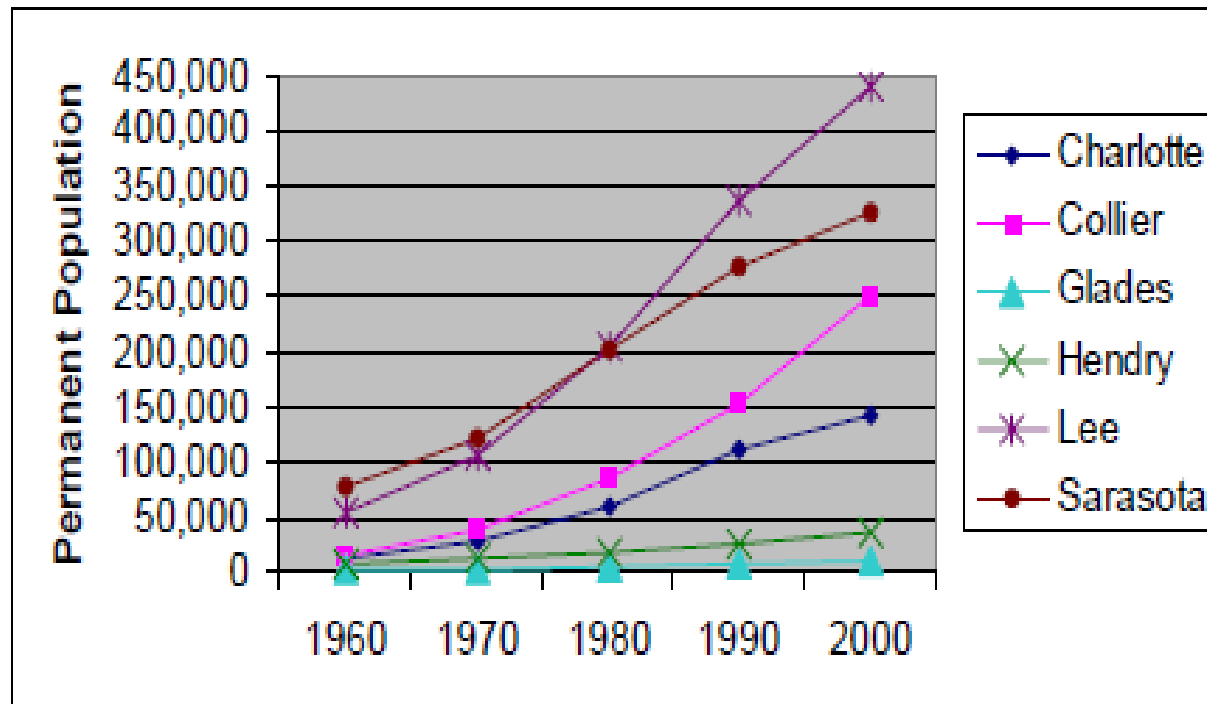
HUD and Local Data to be used for the
development of the
2018 Assessment of Fair Housing

**All HUD provided tables and maps were
obtained at:**

<https://egis.hud.gov/Affht/#>

Chart 1 – Population Growth 1960-2000

POPULATION GROWTH BY COUNTY, 1960 TO 2000

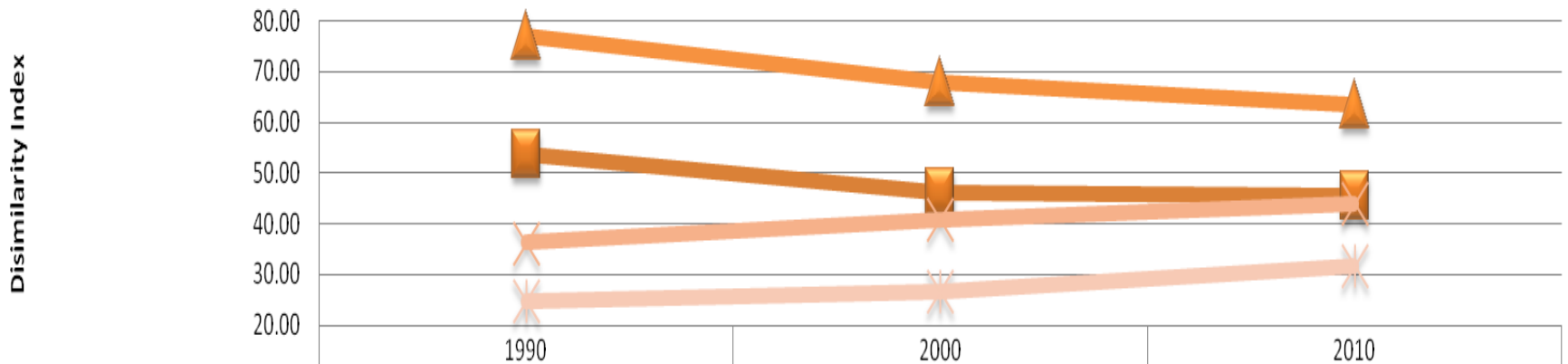


Source: Derived from Table 1.

Southwest Florida Regional Planning Council. (2011). *Volume on of the Strategic Regional Policy Plan (Demographics)*. Retrieved from <http://www.swfrpc.org/srpp.html>

Chart 2 – Dissimilarity Index Cape Coral – Fort Myers Region

Cape Coral-Fort Myers Region

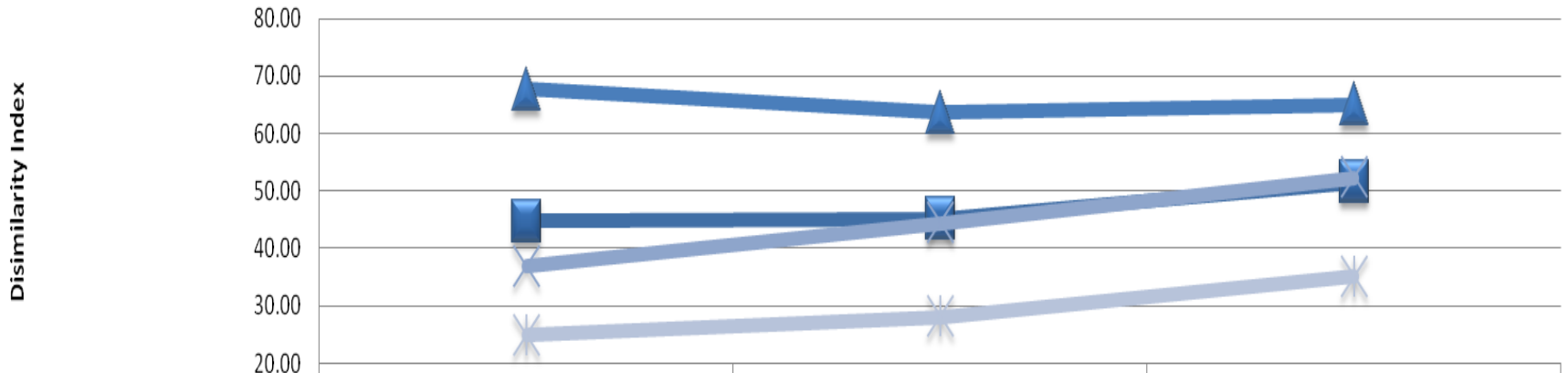


■ Non-White/White	53.68	46.03	45.44
▲ Black/White	77.08	68.02	63.39
✕ Hispanic/White	36.25	40.82	43.86
◆ Asian or Pacific Islander/White	24.60	26.76	31.60

Data Source: HUD Table 2 – Demographic Trends – <https://egis.hud.gov/Affht/>

Chart 3 – Dissimilarity Index Lee County Jurisdiction

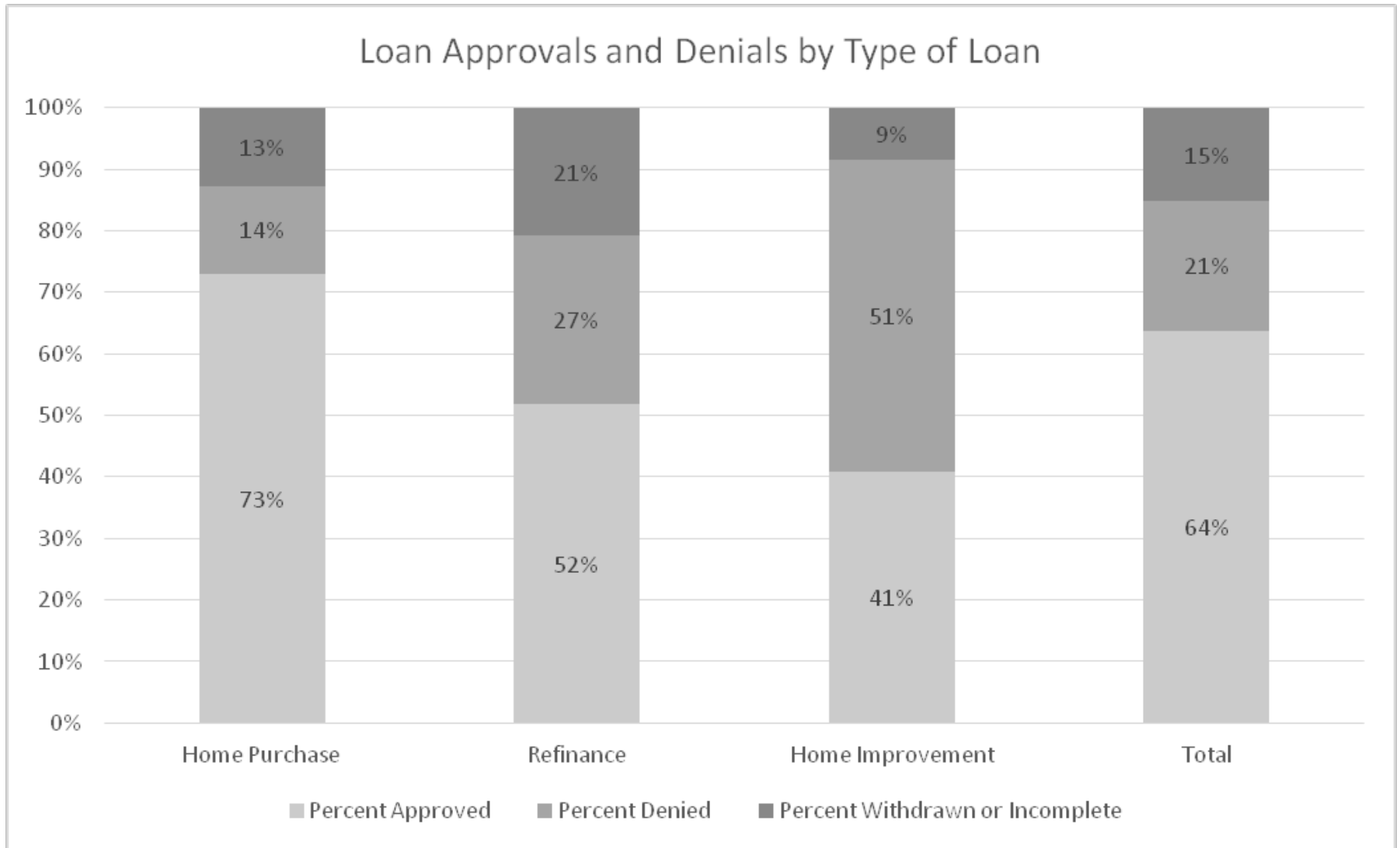
Lee County Jurisdiction



	1990	2000	2010
■ Non-White/White	44.74	45.15	51.49
▲ Black/White	67.74	63.61	65.01
✱ Hispanic/White	36.89	44.39	52.27
✱ Asian or Pacific Islander/White	24.95	28.11	35.13

Data Source: HUD Table 2 – Demographic Trends – <https://egis.hud.gov/Affht/>

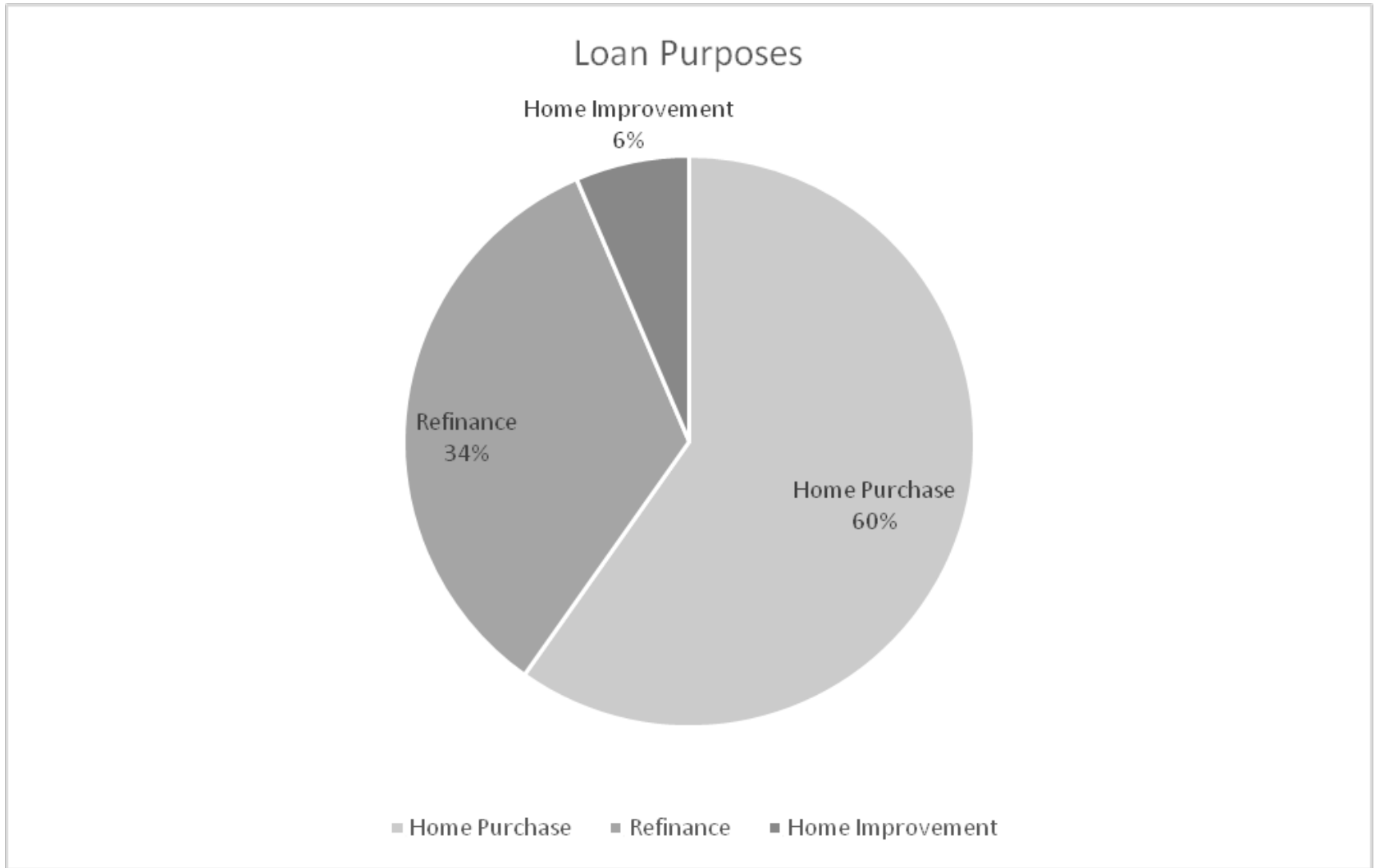
Chart 4 – Loan Approvals and Denials by Type of Loan



Data Source: Home Mortgage Disclosure Act – Tables 5-1, 5-2, 5-3, & 5-4

<https://www.ffiec.gov/hmdaadwebreport/AggMSA.aspx>

Chart 5 – Loan Purposes



Data Source: Home Mortgage Disclosure Act – Tables 5-1, 5-2, 5-3, & 5-4

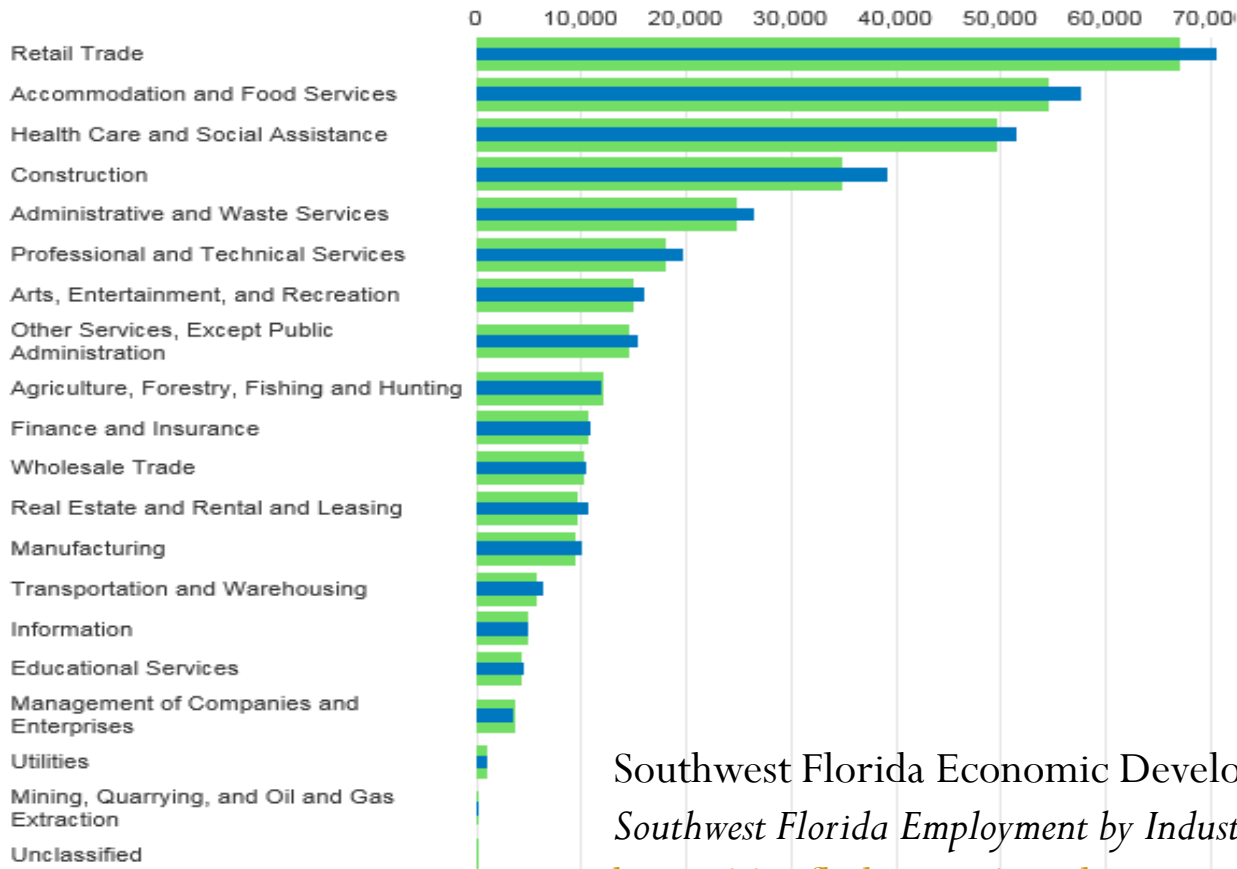
<https://www.ffiec.gov/hmdaadwebreport/AggMSA.aspx>

Chart 6 – Southwest Florida Employment by Industry

Southwest Florida Employment by Industry

Average Annual Employment

2014 2015



Southwest Florida Economic Development Alliance. (2015).

Southwest Florida Employment by Industry. Retrieved from

<https://swfleda.com/employment-by-industry/>

Source: Florida Department of Economic Opportunity

Chart 7 – Southwest Florida Wages by Industry

Southwest Florida Wages by Industry

Average Annual Wages

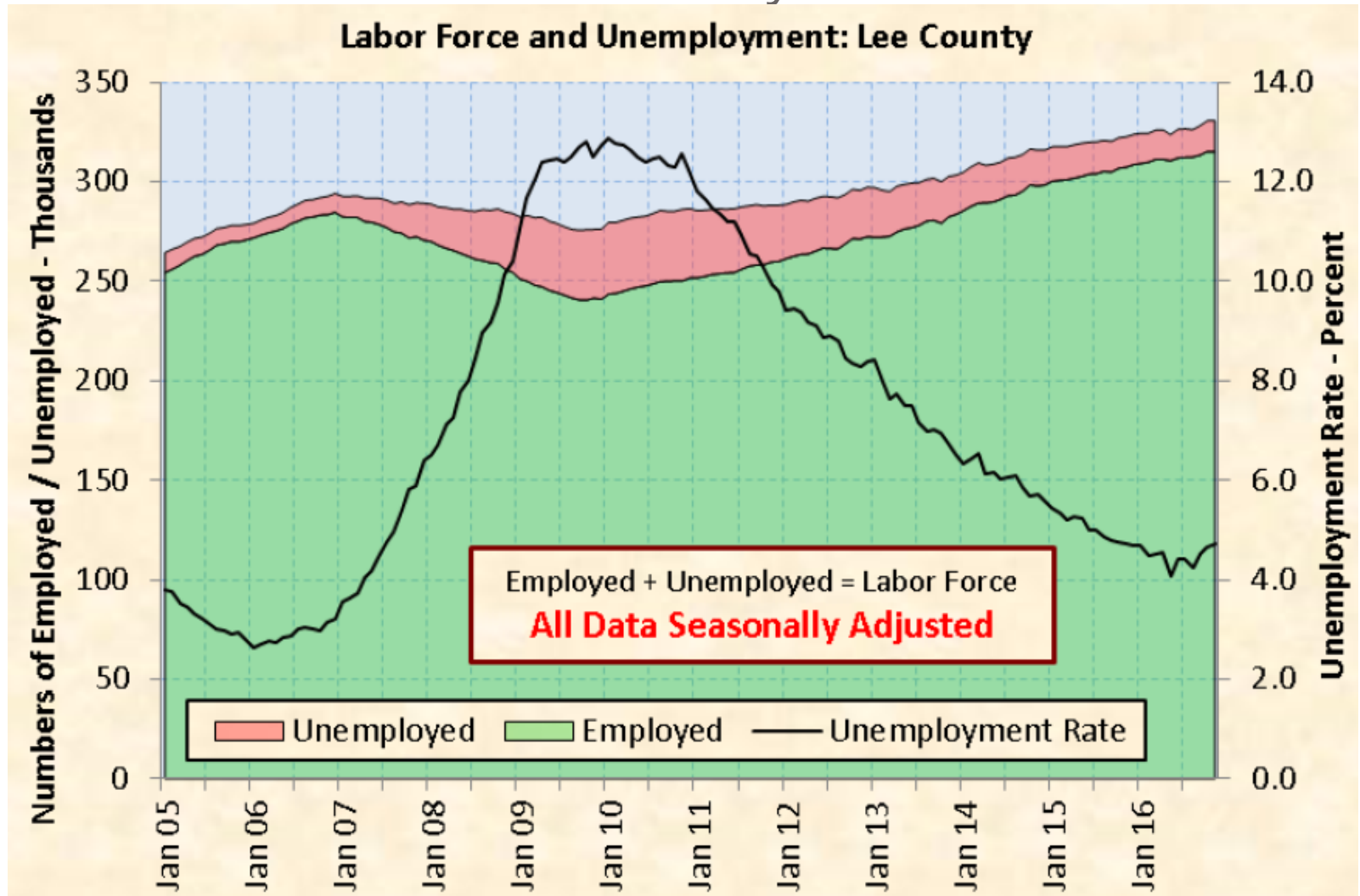
Industry	2014	2015 ▲
Management of Companies and Enterprises	\$111,572	\$113,159
Finance and Insurance	\$75,627	\$80,814
Utilities	\$70,544	\$72,742
Professional and Technical Services	\$62,669	\$65,189
Wholesale Trade	\$60,181	\$62,172
Information	\$58,670	\$59,798
Mining, Quarrying, and Oil and Gas Extraction	\$50,923	\$51,833
Manufacturing	\$46,248	\$51,768
Health Care and Social Assistance	\$49,831	\$51,072
Real Estate and Rental and Leasing	\$48,558	\$50,114
Construction	\$40,533	\$42,273
Transportation and Warehousing	\$37,713	\$38,819
Unclassified	\$46,221	\$38,778
Educational Services	\$35,239	\$36,472
Administrative and Waste Services	\$31,686	\$32,540
Other Services, Except Public Administration	\$30,991	\$32,168
Arts, Entertainment, and Recreation	\$32,477	\$31,993
Agriculture, Forestry, Fishing and Hunting	\$28,492	\$31,063
Retail Trade	\$28,204	\$29,344
Accommodation and Food Services	\$21,072	\$21,653

Source: [Florida Department of Economic Opportunity](#)

Southwest Florida Economic Development Alliance. (2015). *Southwest Florida Wages by Industry*.

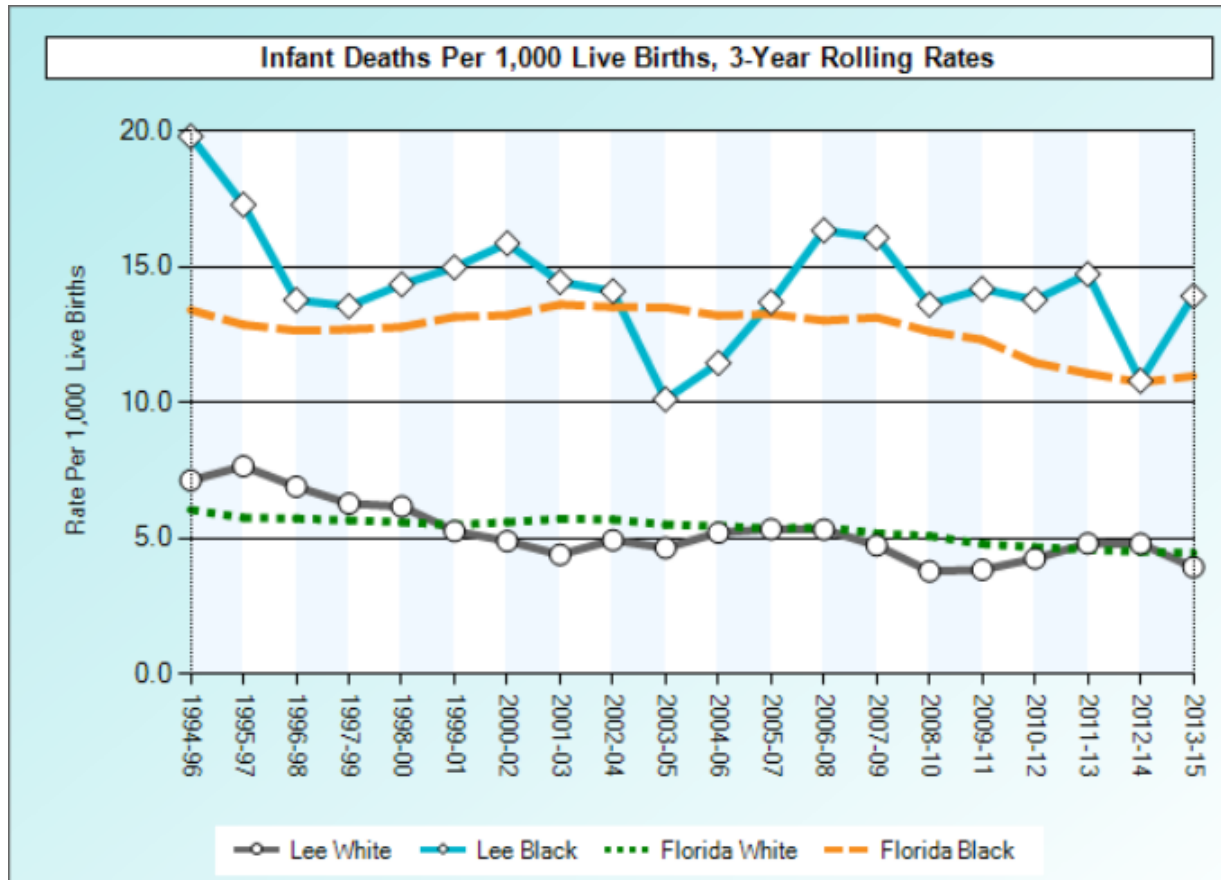
Retrieved from <https://swfleda.com/wages-by-industry/>

Chart 8 – Labor Force and Unemployment: Lee County



Source: Regional Economic Research Institute. (2017, January). *Southwest Florida Regional Economic Indicators*. XI. 1. Florida Gulf Coast University, Lutgert College of Business. Retrieved from <http://www.fgcu.edu/cob/reri/>

Chart 9 – Infant Deaths per 1000 Live Births in Lee County, 3-year Rolling Rates, White/Black

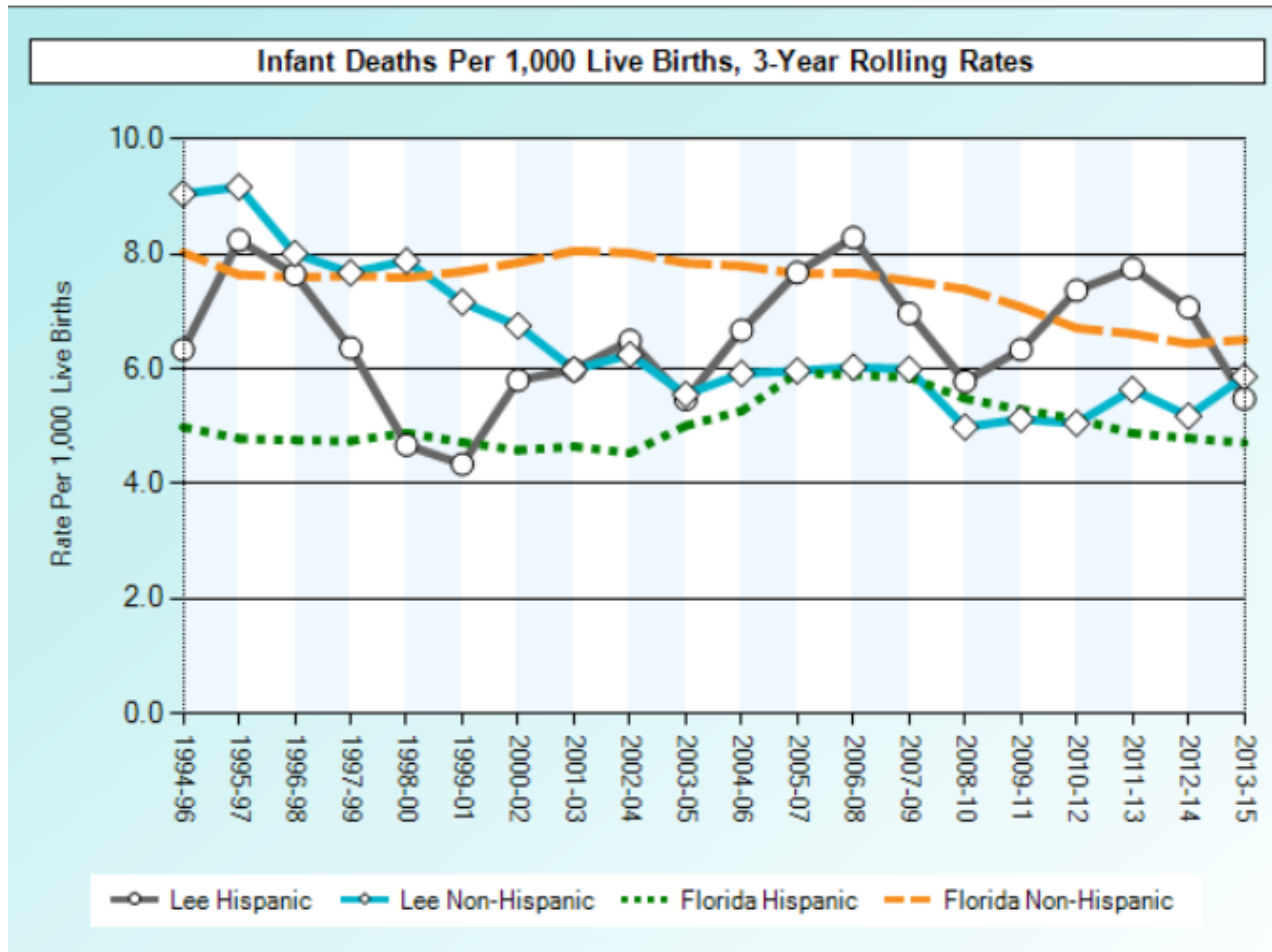


Source: Florida Department of Health, Division of Public Health Statistics & Performance Measurement.

Data Source: Florida Department of Health, Bureau of Vital Statistics.

Retrieved from: <http://www.flhealthcharts.com/charts/DataViewer/InfantDeathViewer/InfantDeathViewer.aspx>

Chart 10 – Infant Deaths per 1000 Live Births in Lee County, 3-year Rolling Rates, Hispanic/Non-Hispanic

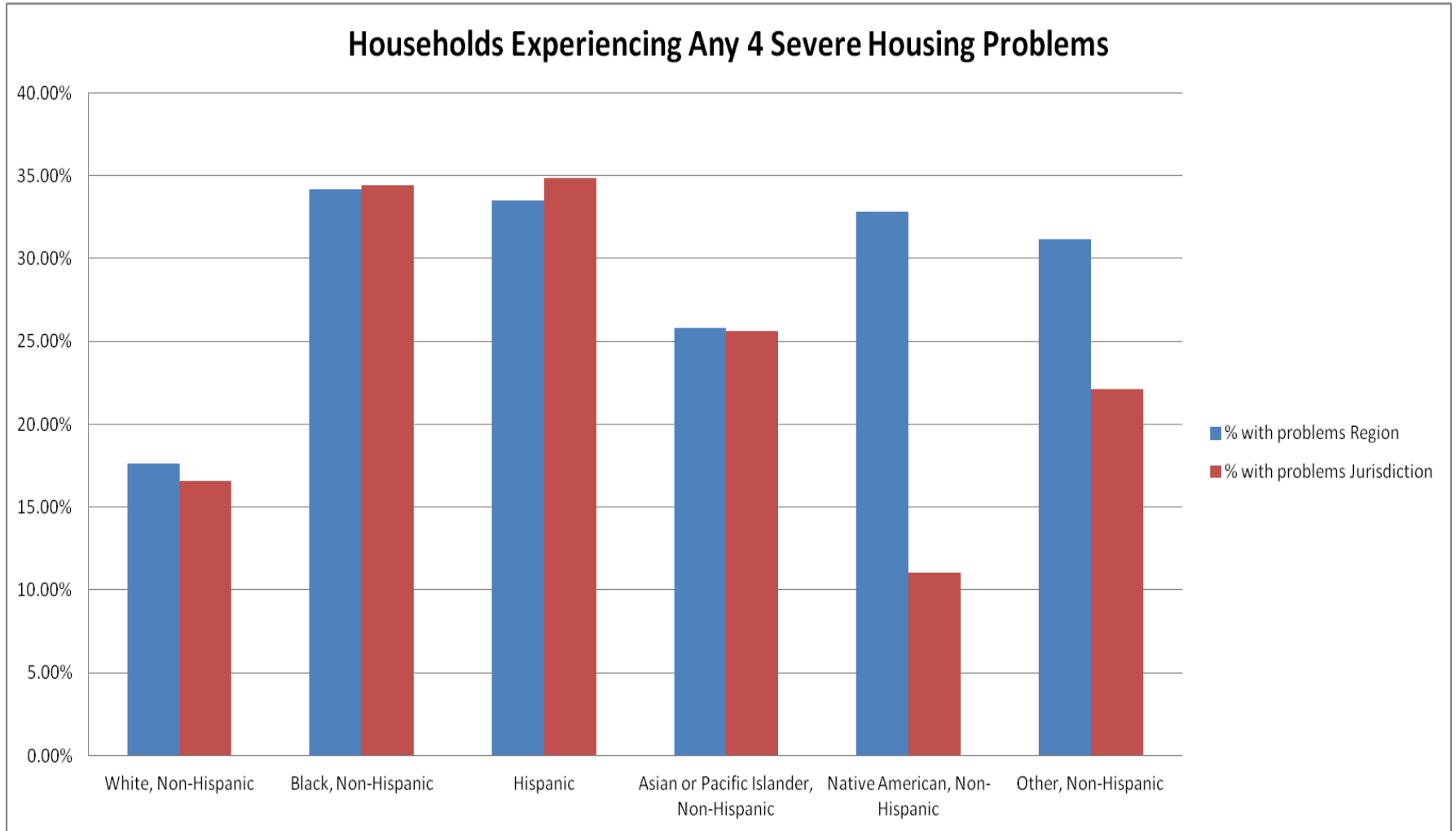


Source: Florida Department of Health, Division of Public Health Statistics & Performance Measurement.

Data Source: Florida Department of Health, Bureau of Vital Statistics.

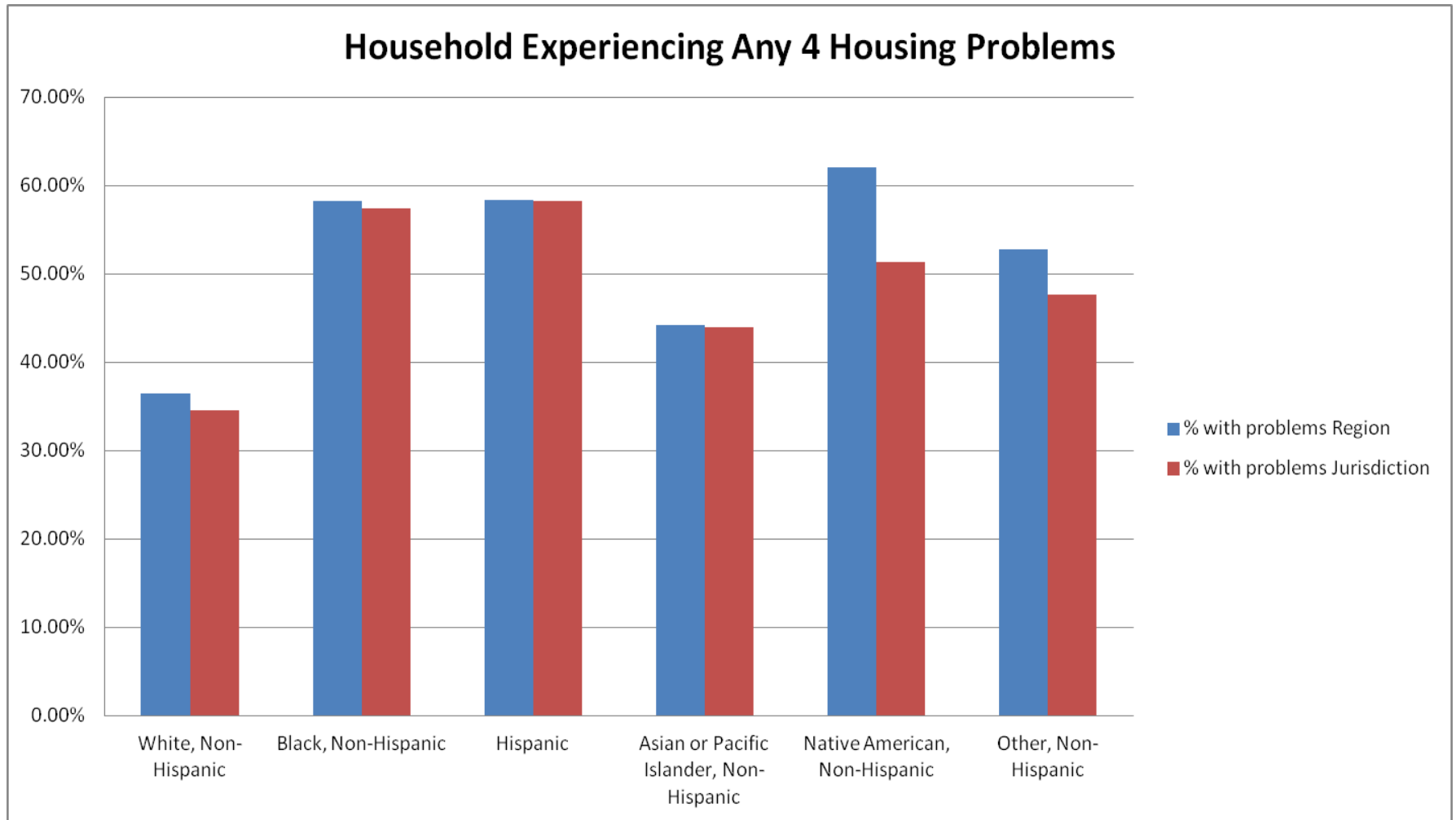
Retrieved from: <http://www.flhealthcharts.com/charts/DataViewer/InfantDeathViewer/InfantDeathViewer.aspx>

Chart 11 – Households Experiencing Any 4 Severe Housing Problems



Data Source: HUD Table 9 – Demographics of Households with Disproportionate Housing Needs – <https://egis.hud.gov/Affht/>

Chart 12 – Households Experiencing Any 4 Housing Problems



Data Source: HUD Table 9 – Demographics of Households with Disproportionate Housing Needs – <https://egis.hud.gov/Affht/>

Chart 13 – Race/Ethnicity OF Households with Severe Housing Cost Burdens

Demographics of Households with Severe Housing Cost Burdens

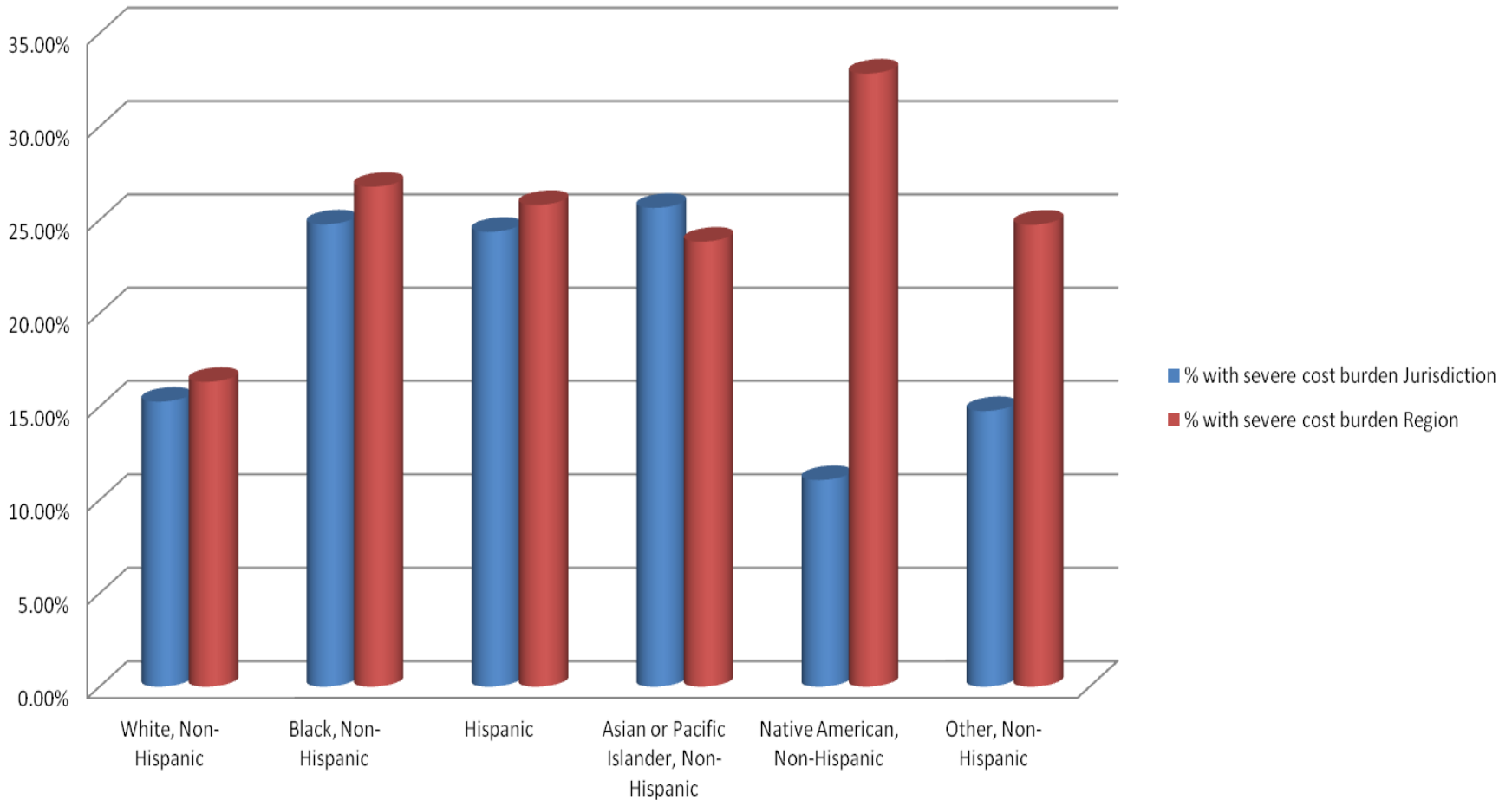
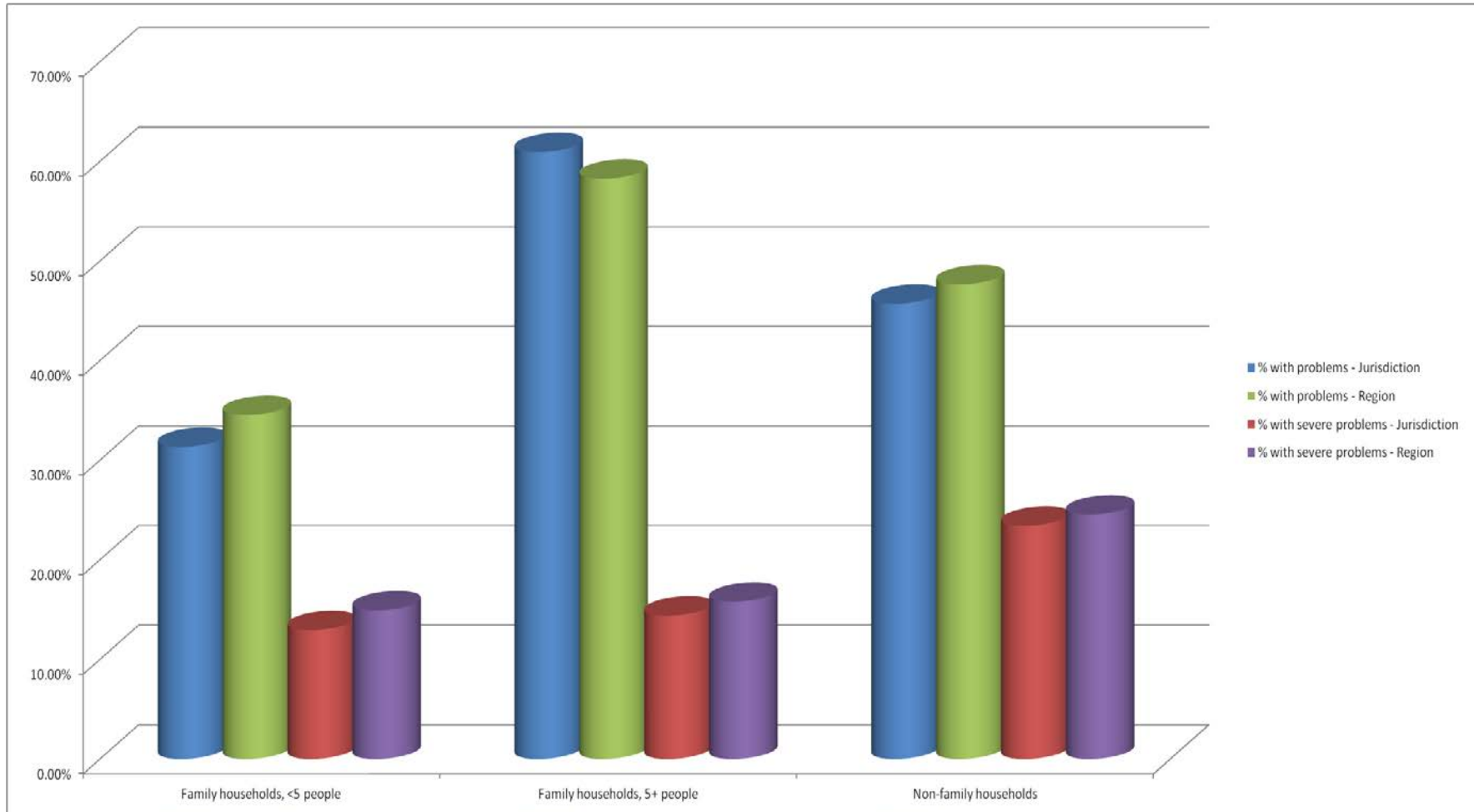
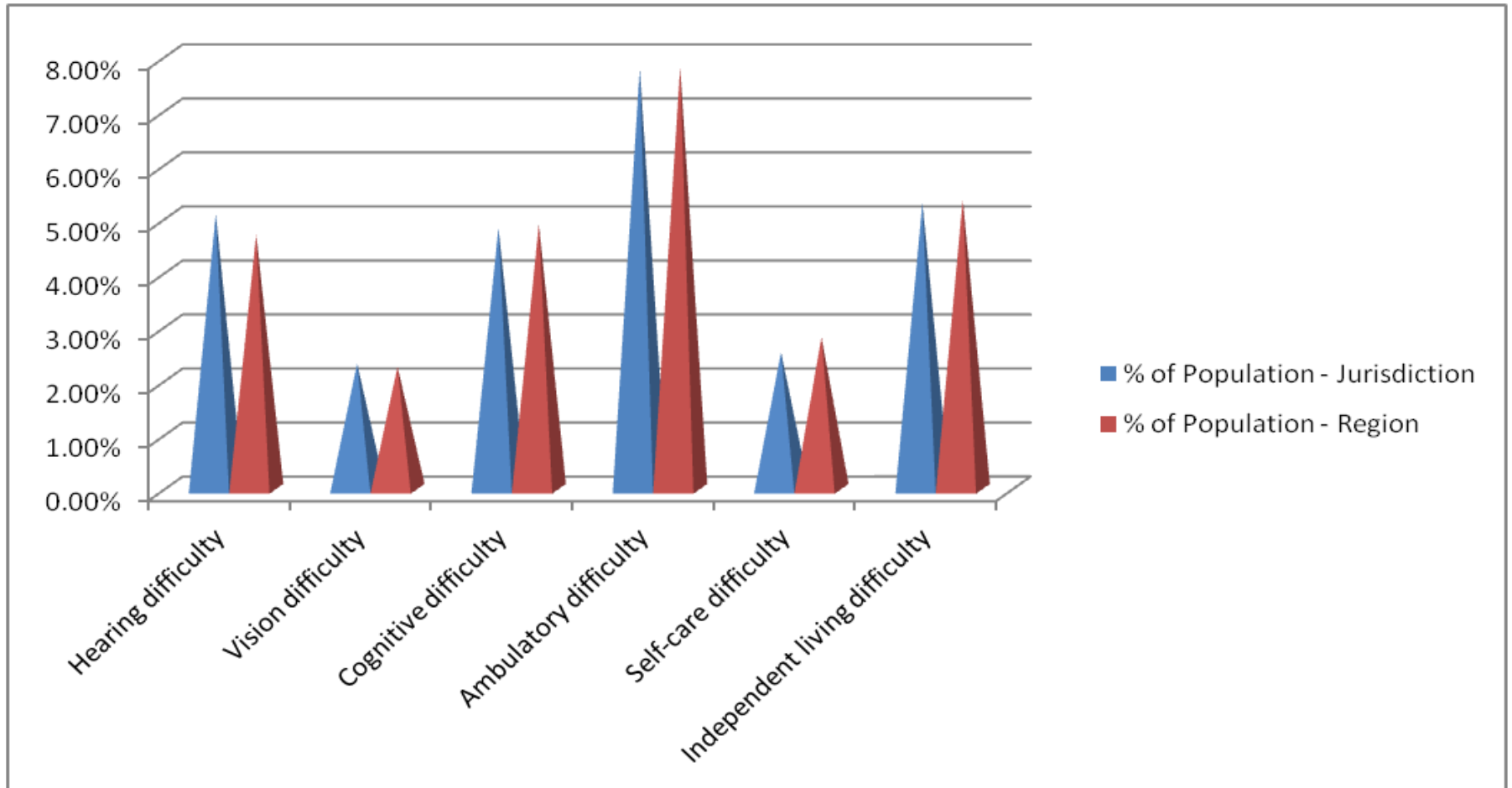


Chart 14 – Family Size and Housing Problems Comparison



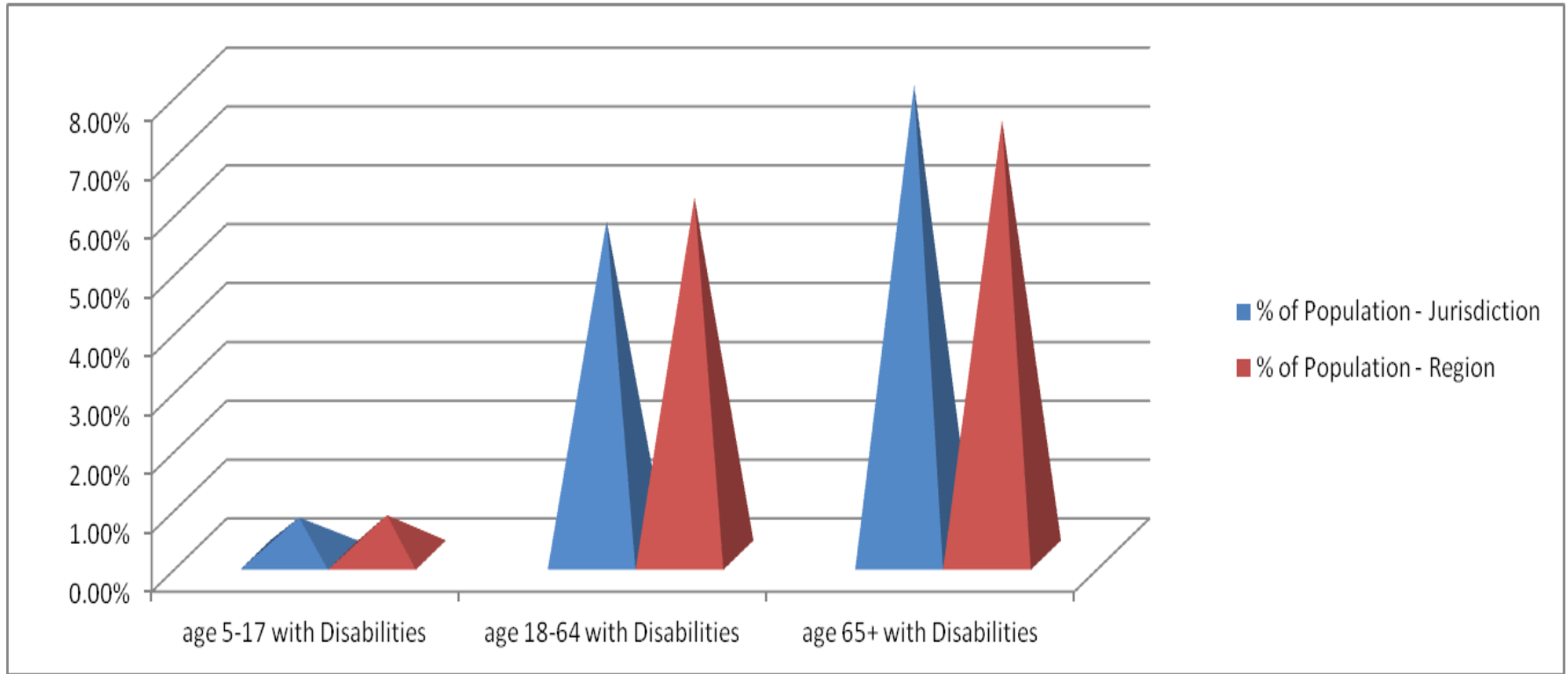
Data Source: HUD Table 9– Demographics of Households with Disproportionate Housing Needs – <https://egis.hud.gov/Affht/>

Chart 15 – % of Population with Certain Disabilities



Data Source: HUD Table 13 – Disability by Type – <https://egis.hud.gov/Affht/>

Chart 16 – % of Population with Disabilities by Age



Data Source: HUD Table 14 – Disability by Age Group – <https://egis.hud.gov/Affht/>

Table 1– Permanent Population and Growth by County

County	1960	1970		1980		1990		2000	
	Total	Total	Increase	Total	Increase	Total	Increase	Total	Increase
Charlotte	12,594	27,559	14,965	58,460	30,901	110,975	52,515	141,627	30,652
Collier	15,753	38,040	22,287	85,971	47,931	152,099	66,128	251,377	99,278
Glades	2,950	3,669	719	5,992	2,323	7,591	1,599	10,576	2,985
Hendry	8,119	11,859	3,740	18,599	6,740	25,773	7,174	36,210	10,437
Lee	54,539	105,216	50,677	205,266	100,050	335,113	129,847	440,888	105,775
Sarasota	76,895	120,413	43,518	202,251	81,838	277,776	75,525	325,957	48,181
Region	170,850	306,756	135,906	576,539	269,783	909,327	332,788	1,206,635	297,308
State	4,951,560	6,791,418	1,839,858	9,747,197	2,955,779	12,937,926	3,190,729	15,982,378	3,044,452
Nation	179,323,175	203,302,031	23,978,856	226,545,805	23,243,774	248,709,873	22,164,068	281,421,906	32,712,033

Sources: Florida Statistical Abstract, 1981, 1998, Table 1.66; 1990 data from Table DP-1, "General Population and Housing Characteristics: 1990," U. S. Census. 2000 data from Table DP-1, "Profile of General Demographic Characteristics: 2000," U. S. Census.

Southwest Florida Regional Planning Council. (2011). *Volume on of the Strategic Regional Policy Plan (Demographics)*. Retrieved from <http://www.swfrpc.org/srpp.html>

Table 2– Median Household Income and Poverty Rates by Race/Ethnicity, 2015

	Median Household Income	Less than 100% of the Federal Poverty Level
Lee County	\$55,755	14.70%
White	\$59,698	12.20%
Black/African American	\$36,544	25.40%
American Indian and Alaska Native	\$38,530	26.60%
Asian	\$77,368	12.00%
Native Hawaiian and Other Pacific Islander	\$55,607	18.90%

Source: U.S. Census 2015 American Community Survey Table S1903 and S1703

Table 3– Median Household Income and Poverty Rates by Race/Ethnicity, City of Fort Myers

City of Fort Myers RACE AND HISPANIC OR LATINO ORIGIN	MEDIA HH INCOME	POVERTY RATE
Households	\$ 39,039.00	
One race--		
White	\$ 46,316.00	17.9%
Black or African American	\$ 24,737.00	37.8%
American Indian and Alaska Native		41.0%
Asian	\$ 66,250.00	0.6%
Native Hawaiian and Other Pacific Islander		0.0%
Some other race	\$ 35,387.00	30.6%
Two or more races	\$ 41,063.00	36.3%
Hispanic or Latino origin (of any race)	\$ 31,473.00	36.4%
White alone, not Hispanic or Latino	\$ 49,511.00	11.6%

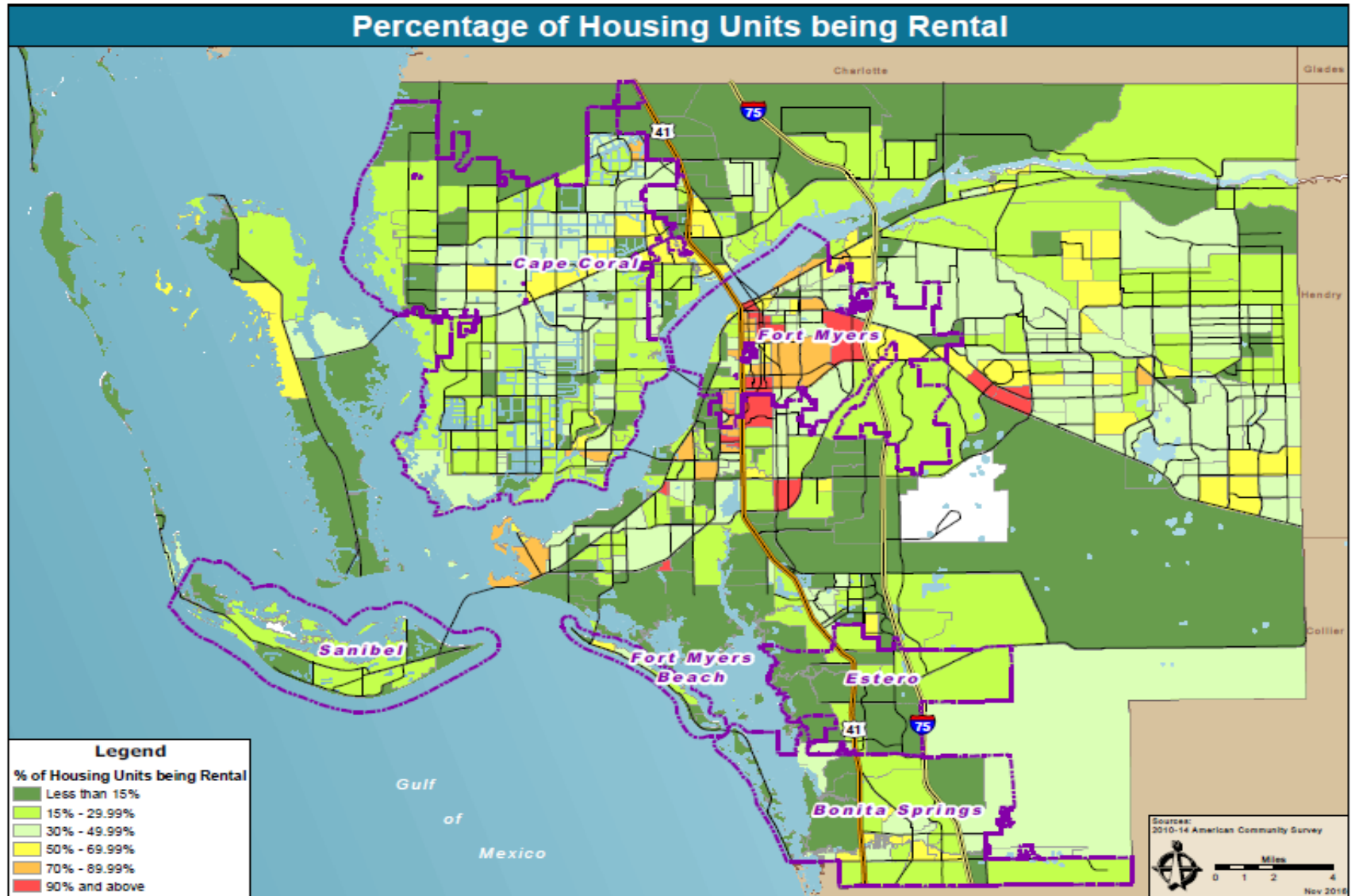
Source: U.S. Census 2015 American Community Survey Table S1903 and S1703

Table 4– Racially/Ethnically Concentrated Area of Poverty Data for Lee County

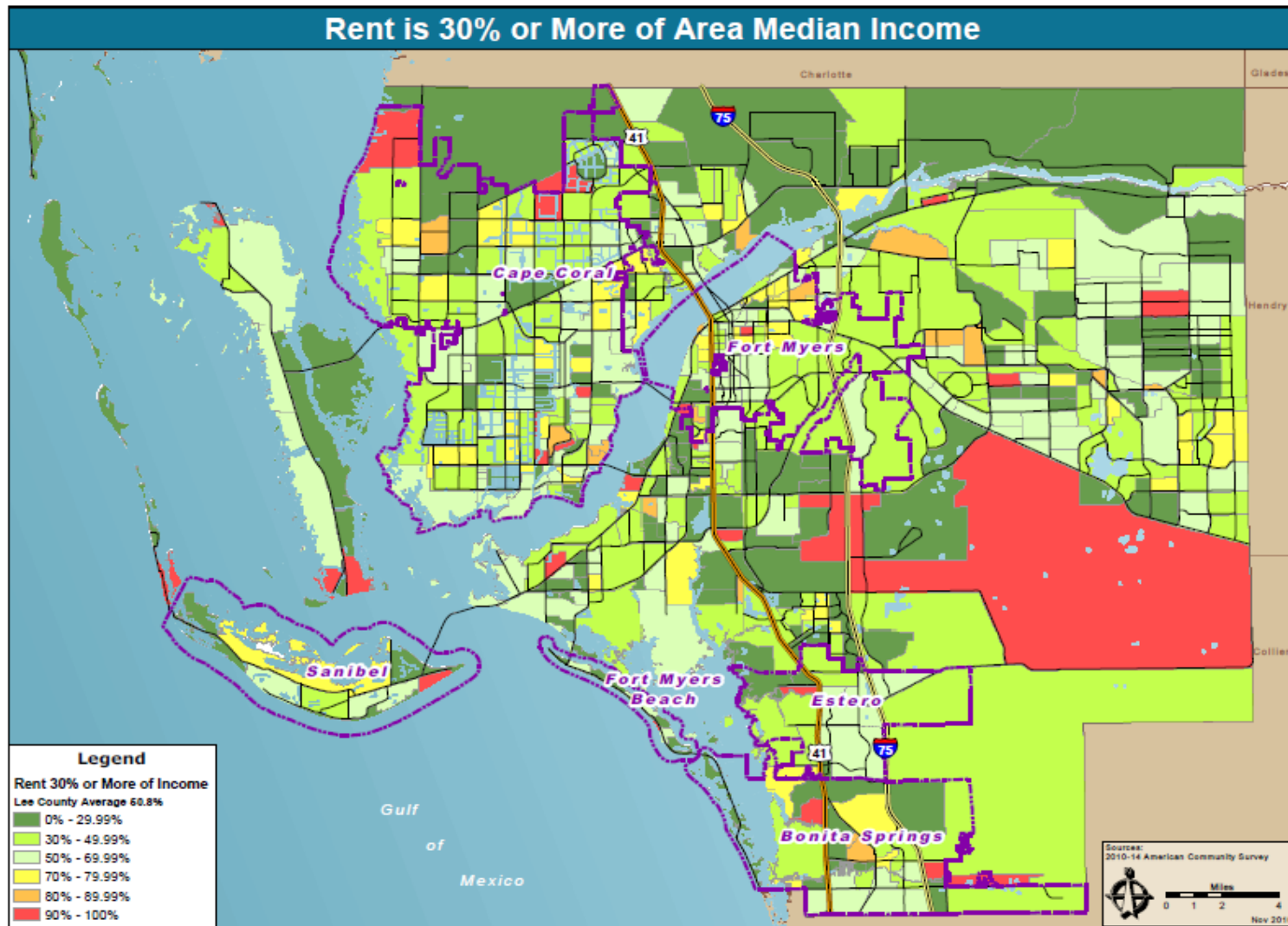
		Sabal Palm	Dunbar	Billy Creek	Westminister	
Parcels	Residential	693	1105	802	942	
	Commercial	39	49	42	2	
	Institutional	109	84	91	10	
	Open Space	405	597	327	1459	
	Industrial	7	83	184	5	
						County Average
	Population being Minority	90.7 %	93.6%	34.6%	52.8%	15.5%
	Households with Children	36.1 %	36.7%	22.0%	59.7%	23.7%
	People with Disabilities	14.1 %	13.6%	11.4%	6.1%	10.5%
	Percent Male	47.7 %	50.0%	54.6%	46.9%	49.0%

Source: U.S. Census 2015 American Community Survey

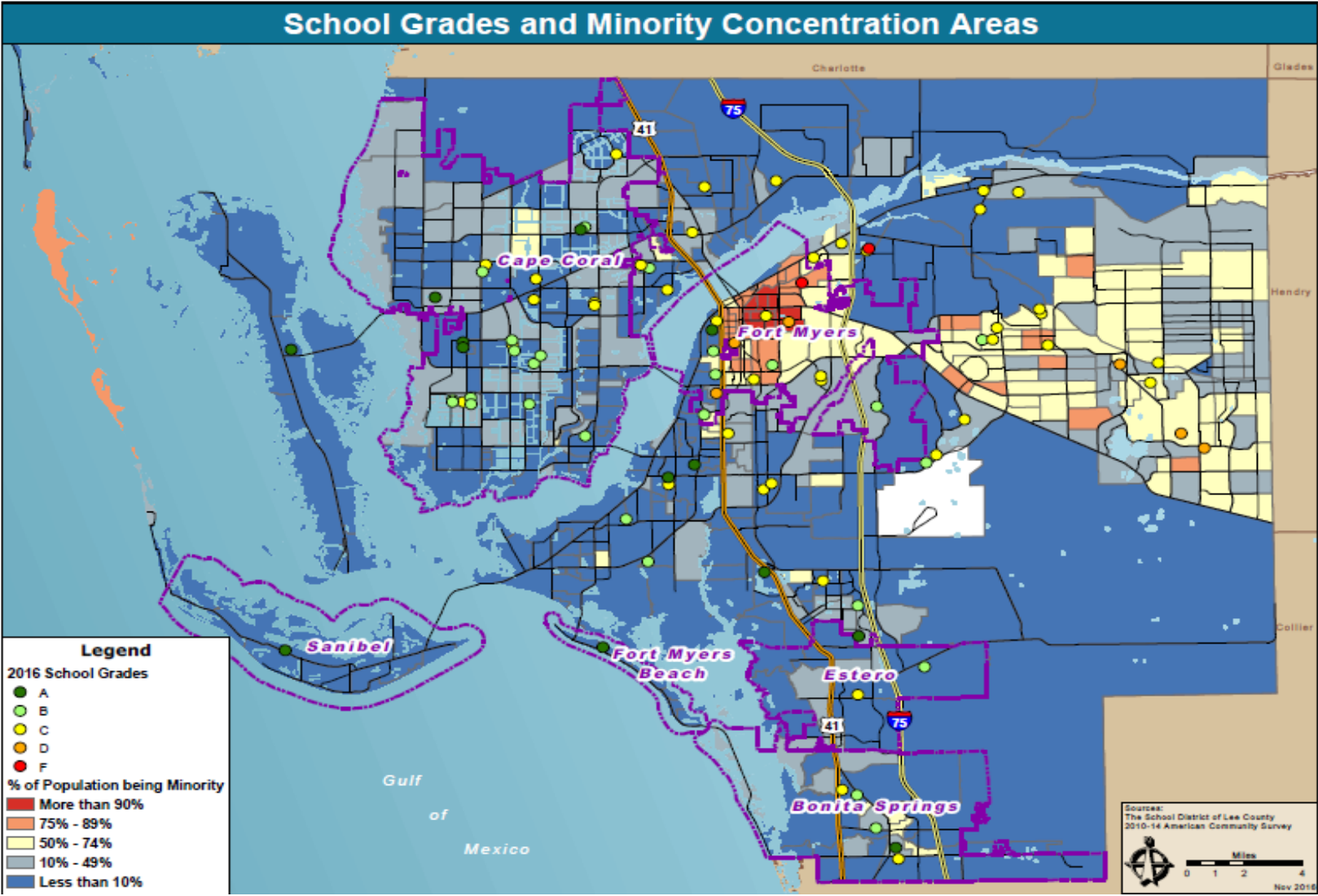
Local Map 1- % of Housing Units being Rented



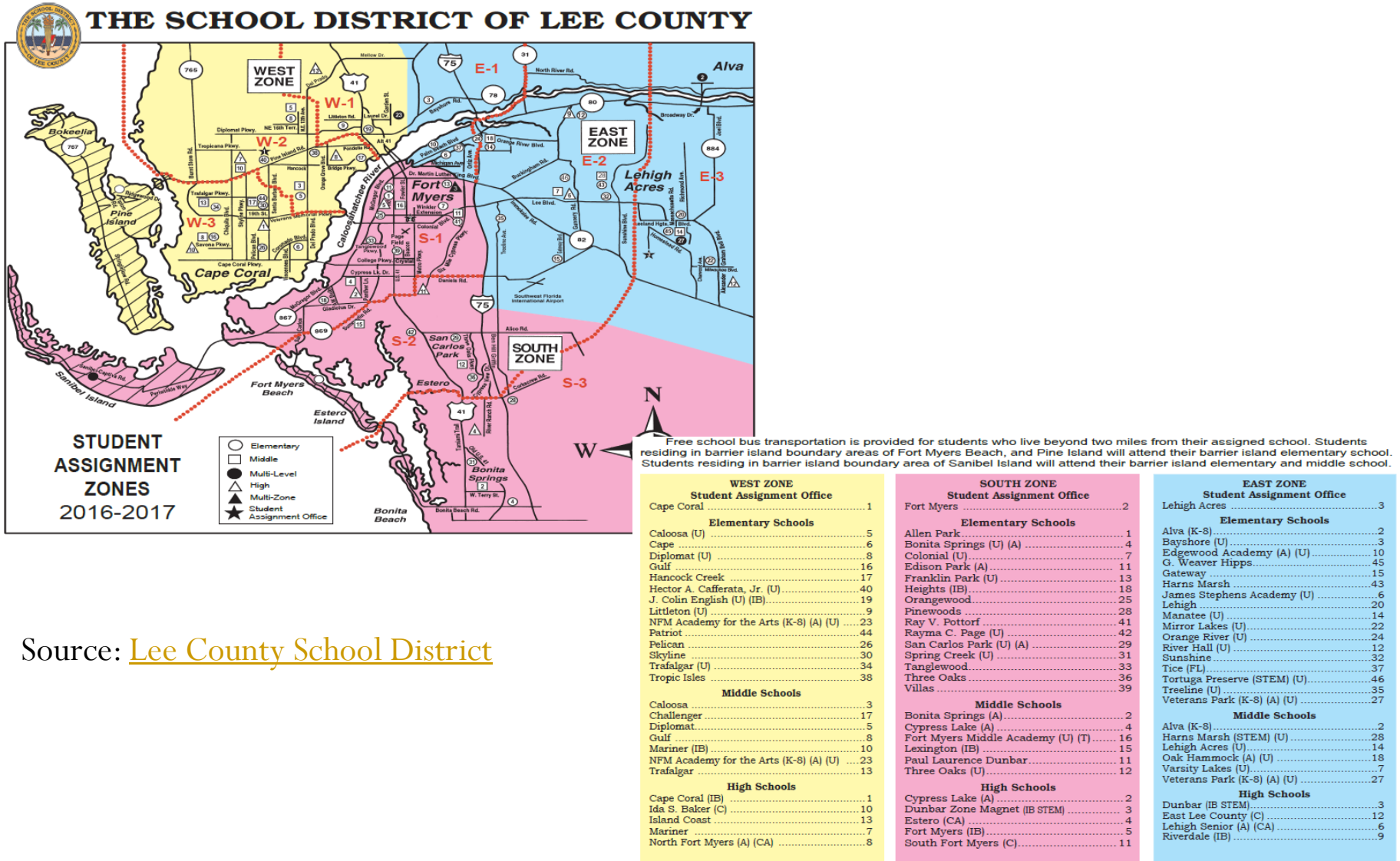
Local Map 2– Rent is 30% or More of AMI



Local Map 3- School Grade and Minority Concentration Areas



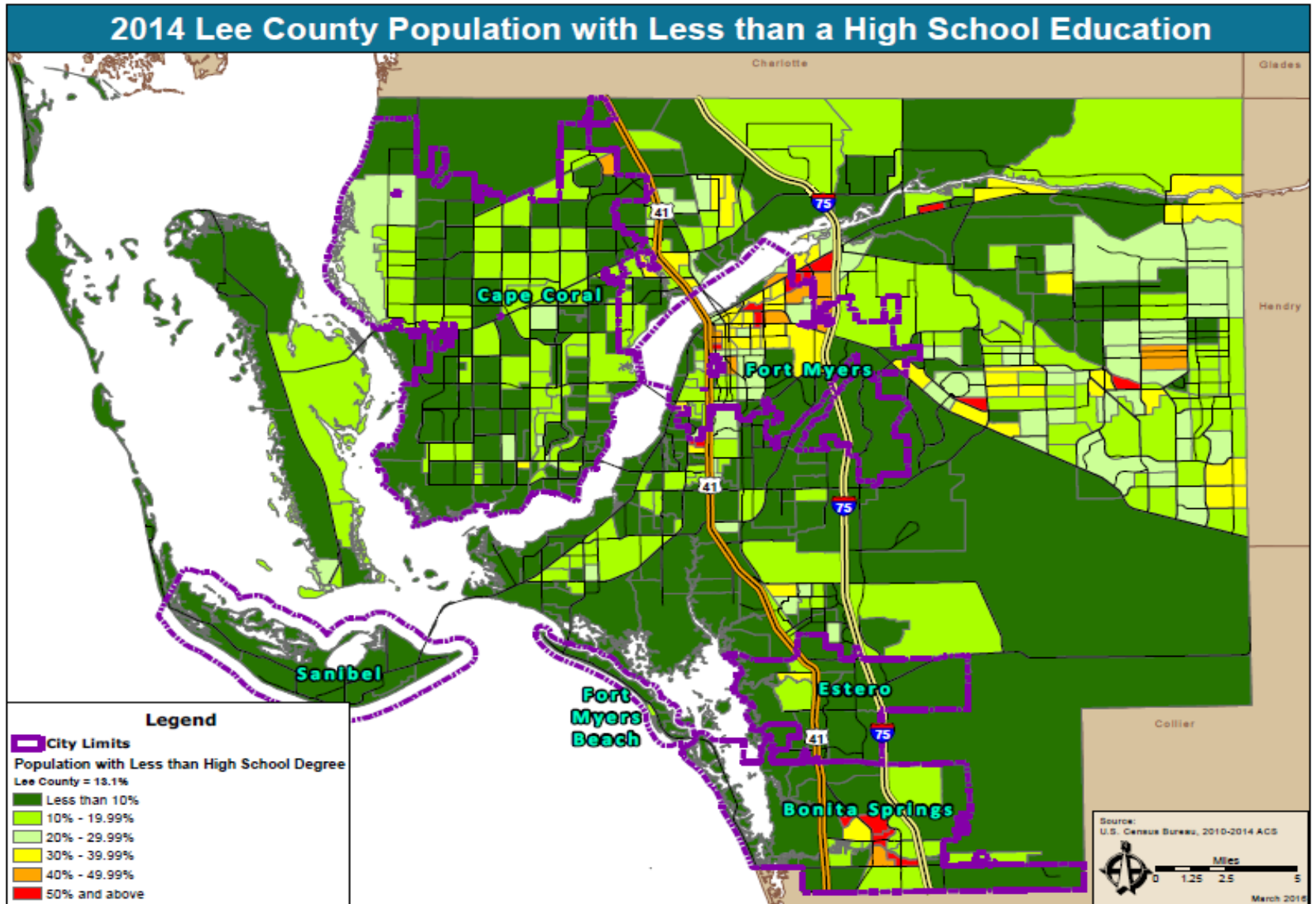
Local Map 4- Lee County School District Student Assignment Zones (2016/2017)



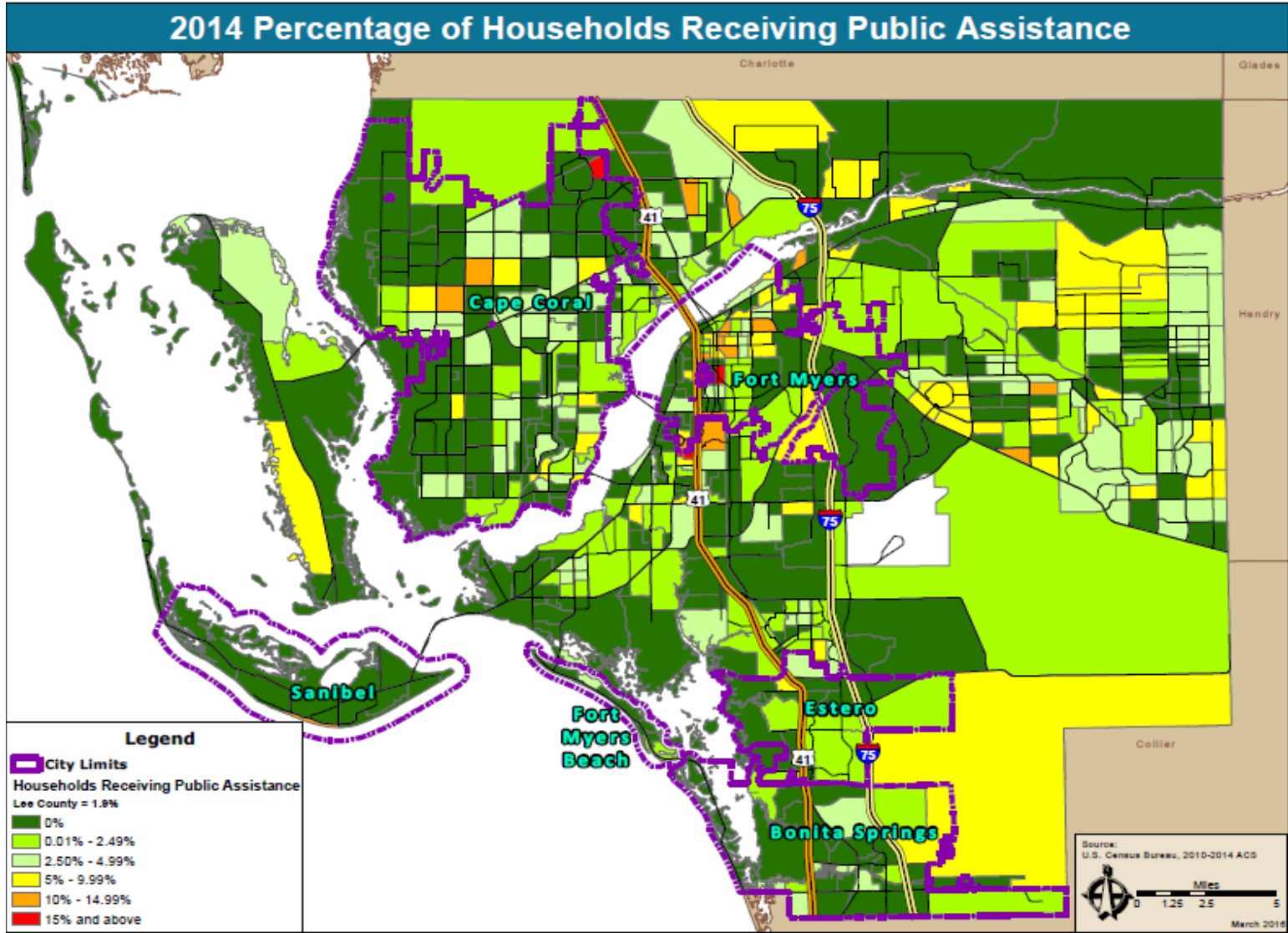
Source: [Lee County School District](http://www.lee.k12.fl.us)

(A) Arts Program; (C) Comprehensive Program; (IB) International Baccalaureate; (CA) Cambridge Program; (T) Technology Program; (STEM) Science, Technology, Engineering, Math; (FL) Foreign Language; (U) this school has a uniform clothing policy

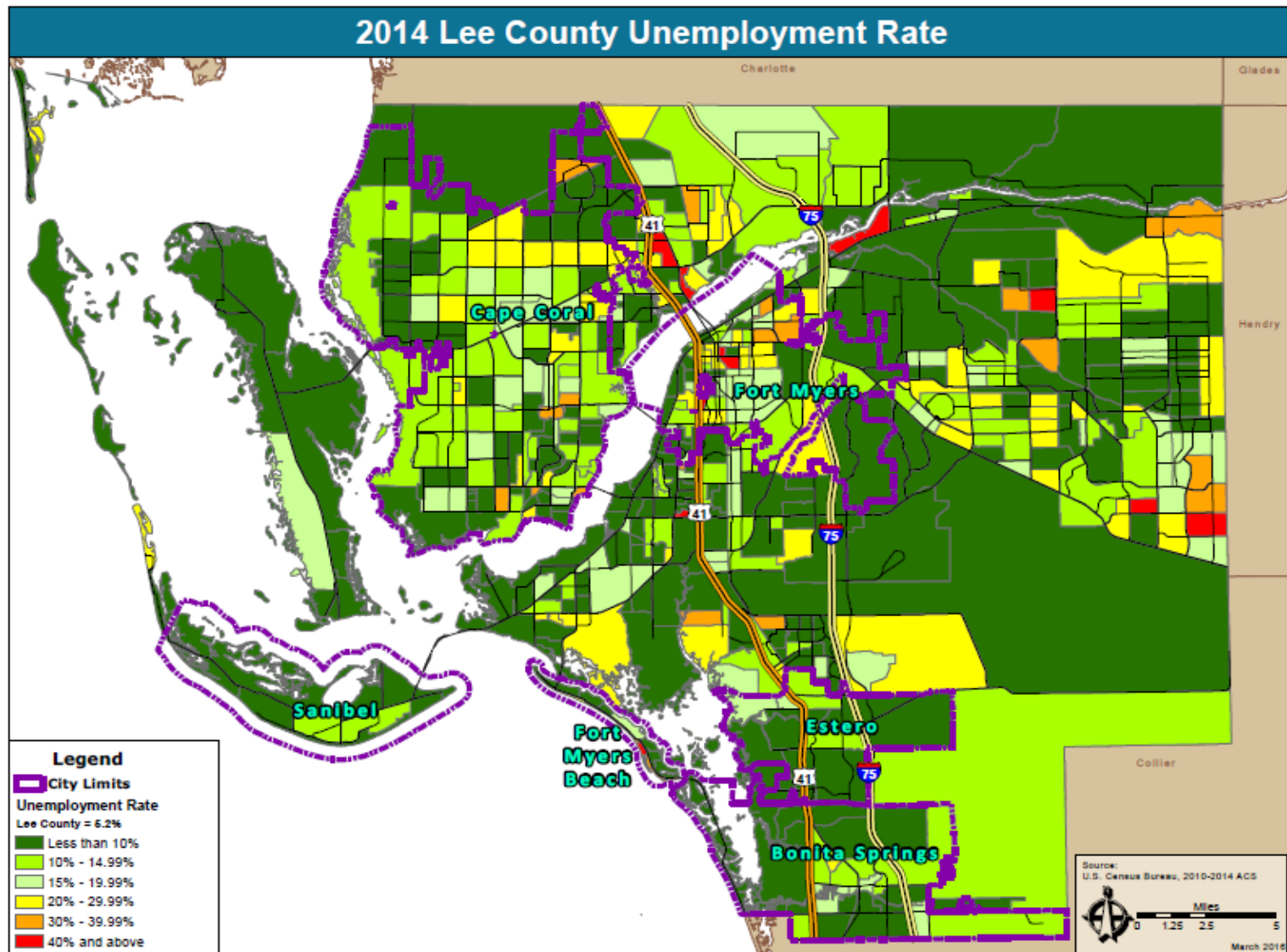
Local Map 5– Lee County Education Levels



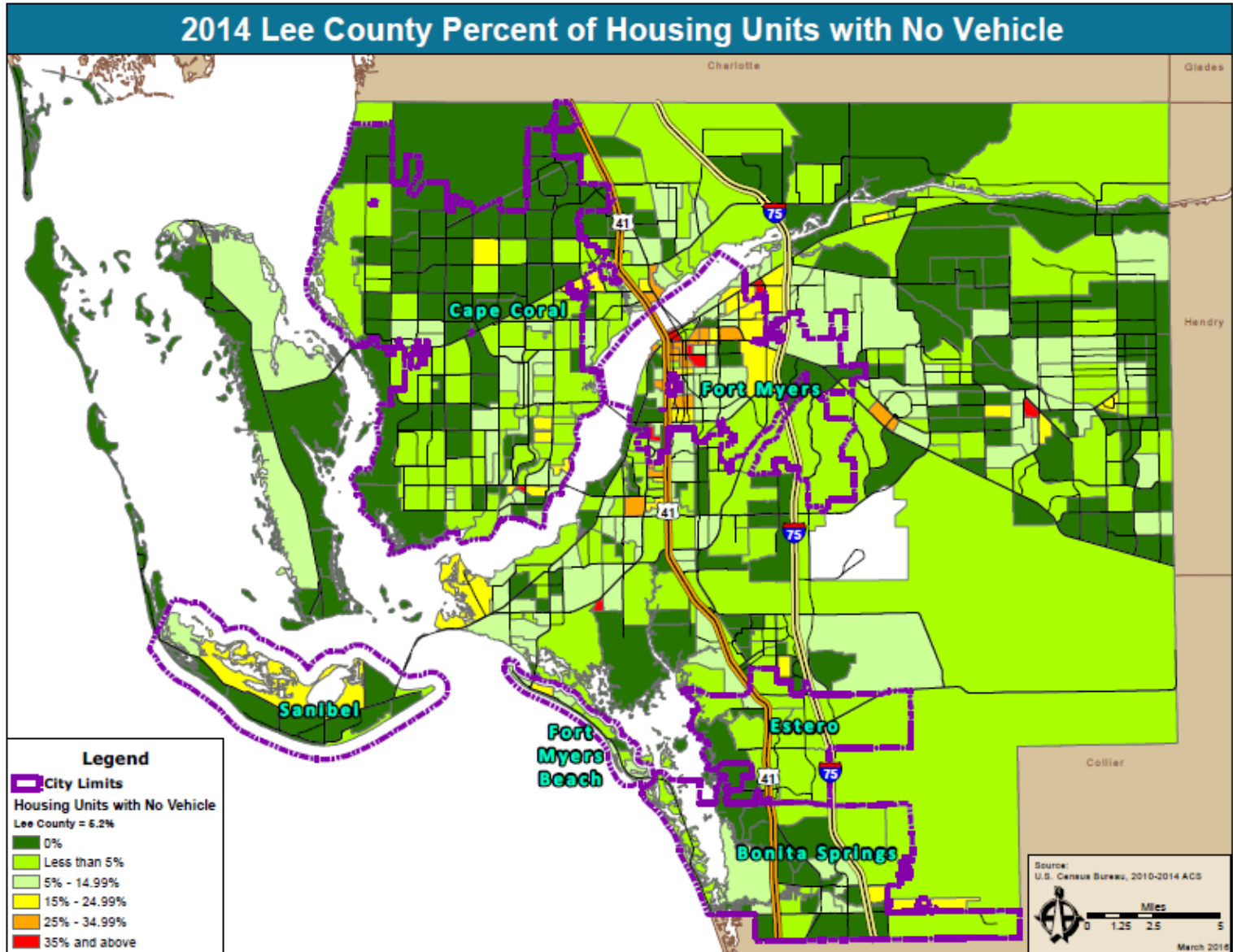
Local Map 6- % of Households Receiving Public Assistance



Local Map 7 – Lee County Unemployment Rate



Local Map 8- % of Households with No Vehicle



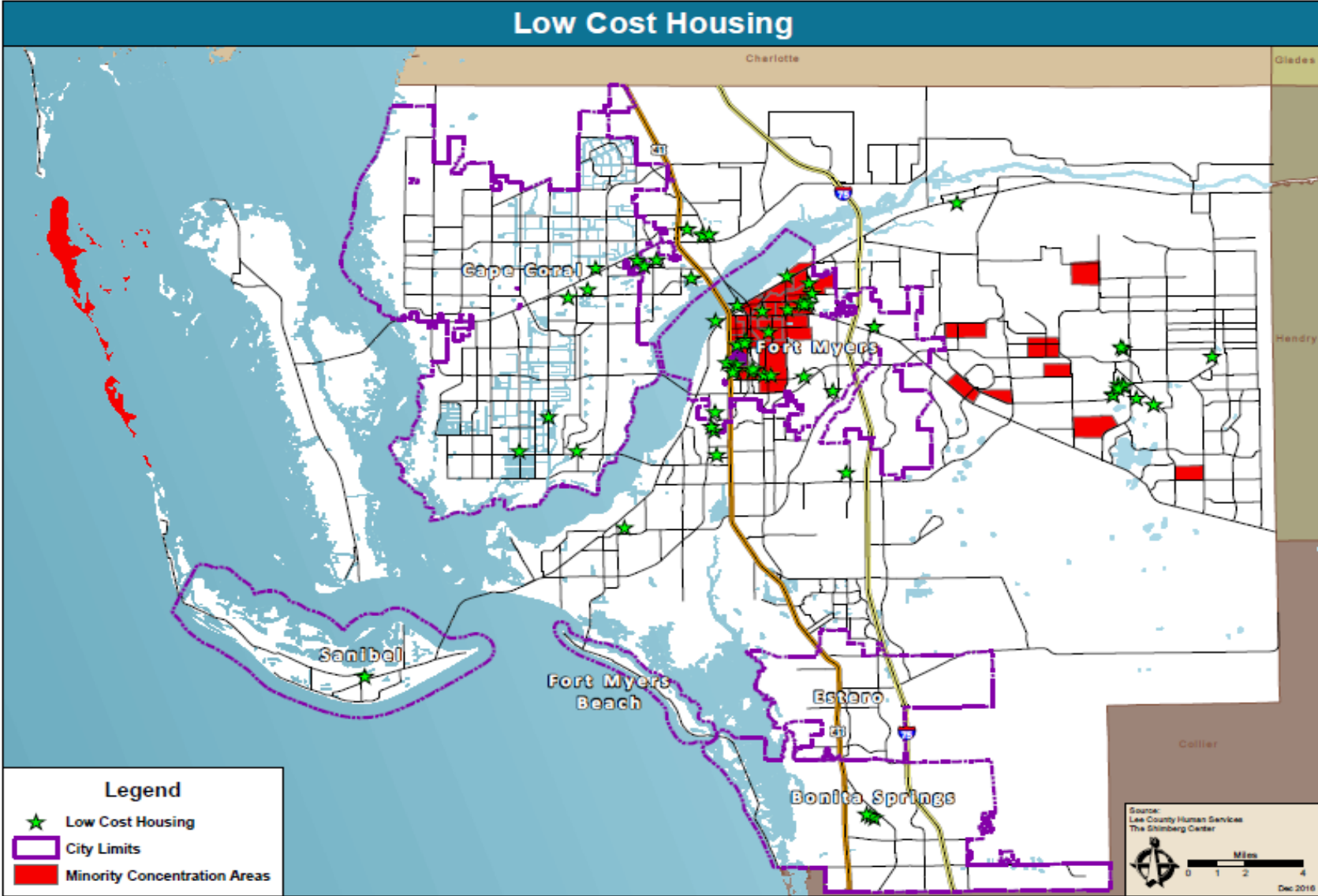
Local Map 9- Lee Tran Routes

Source: Lee Tran System Map, Retrieved from:

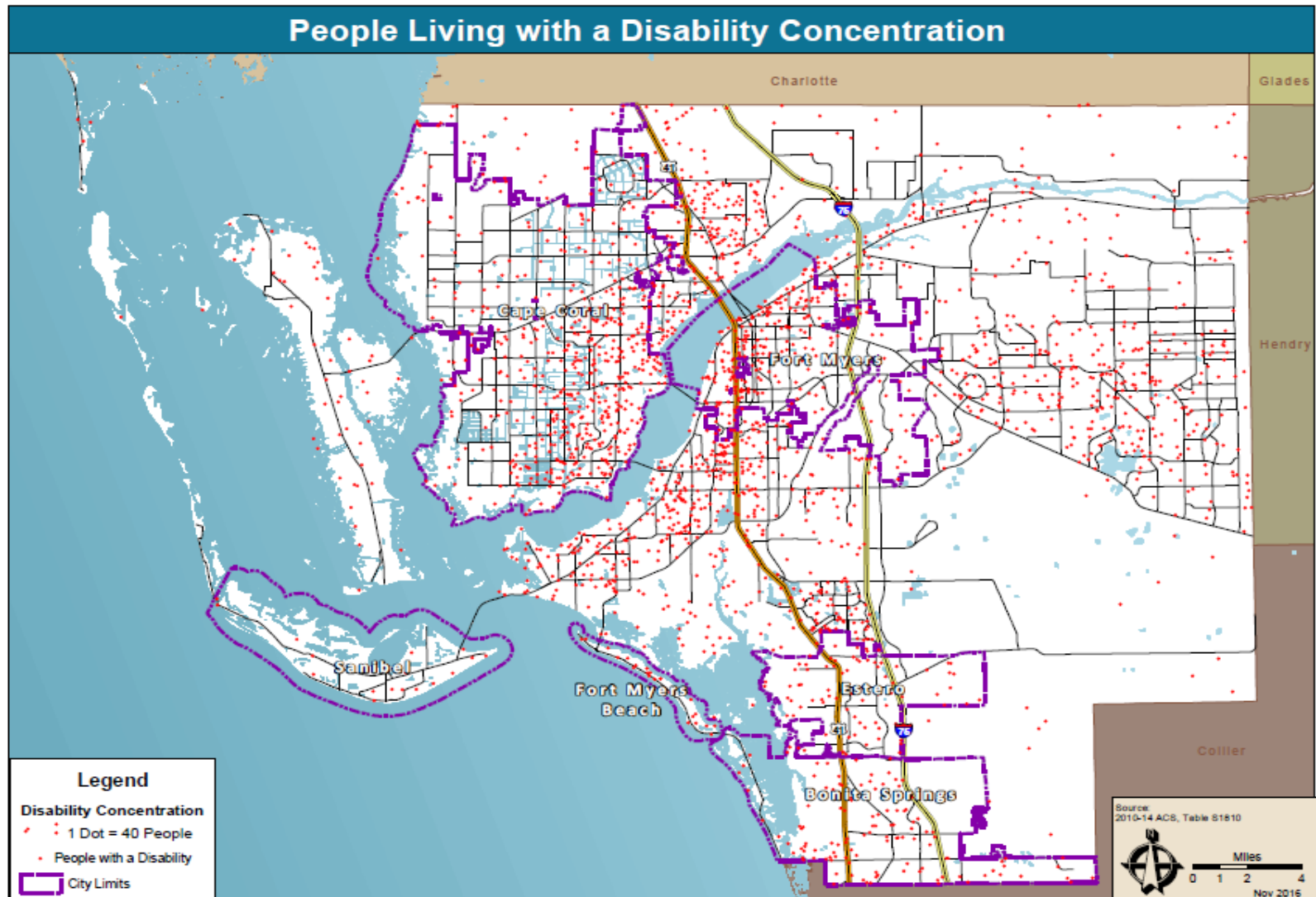
<http://www.lee.gov/leetran/Documents/Lee%20Tran%20System%20Map.pdf>



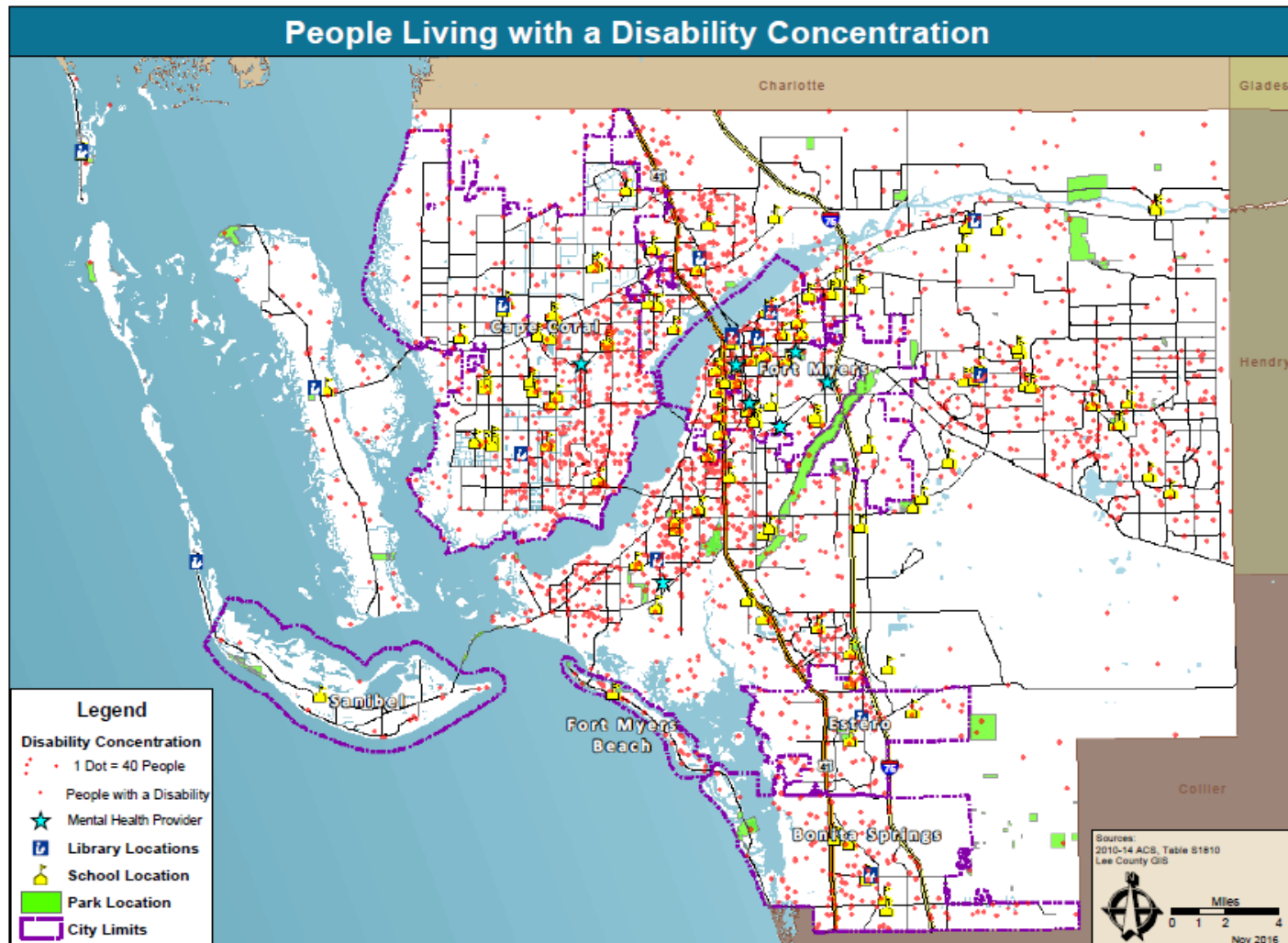
Local Map 10- Low Cost Housing Locations



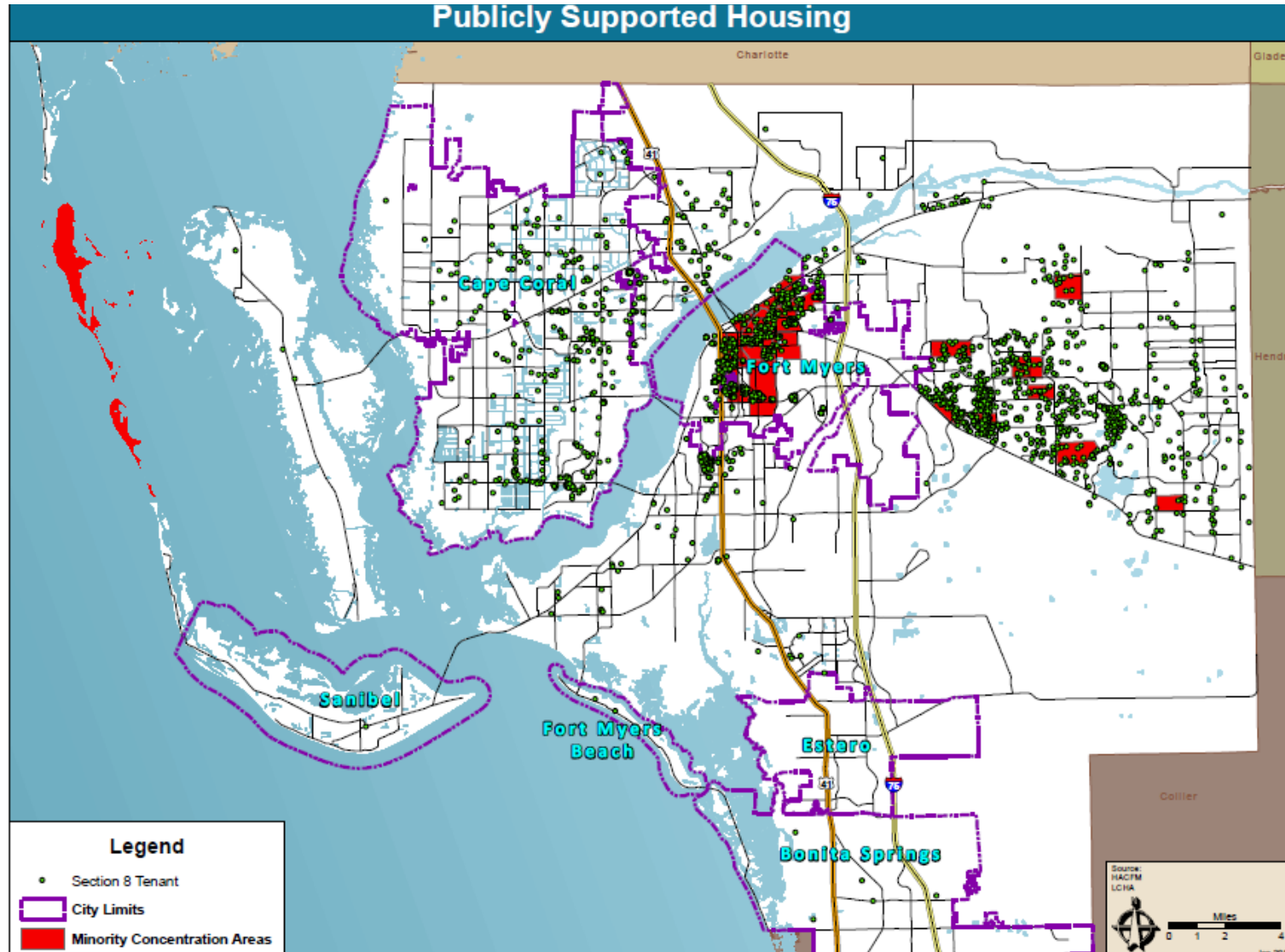
Local Map 11- Persons living with Disabilities in Lee County



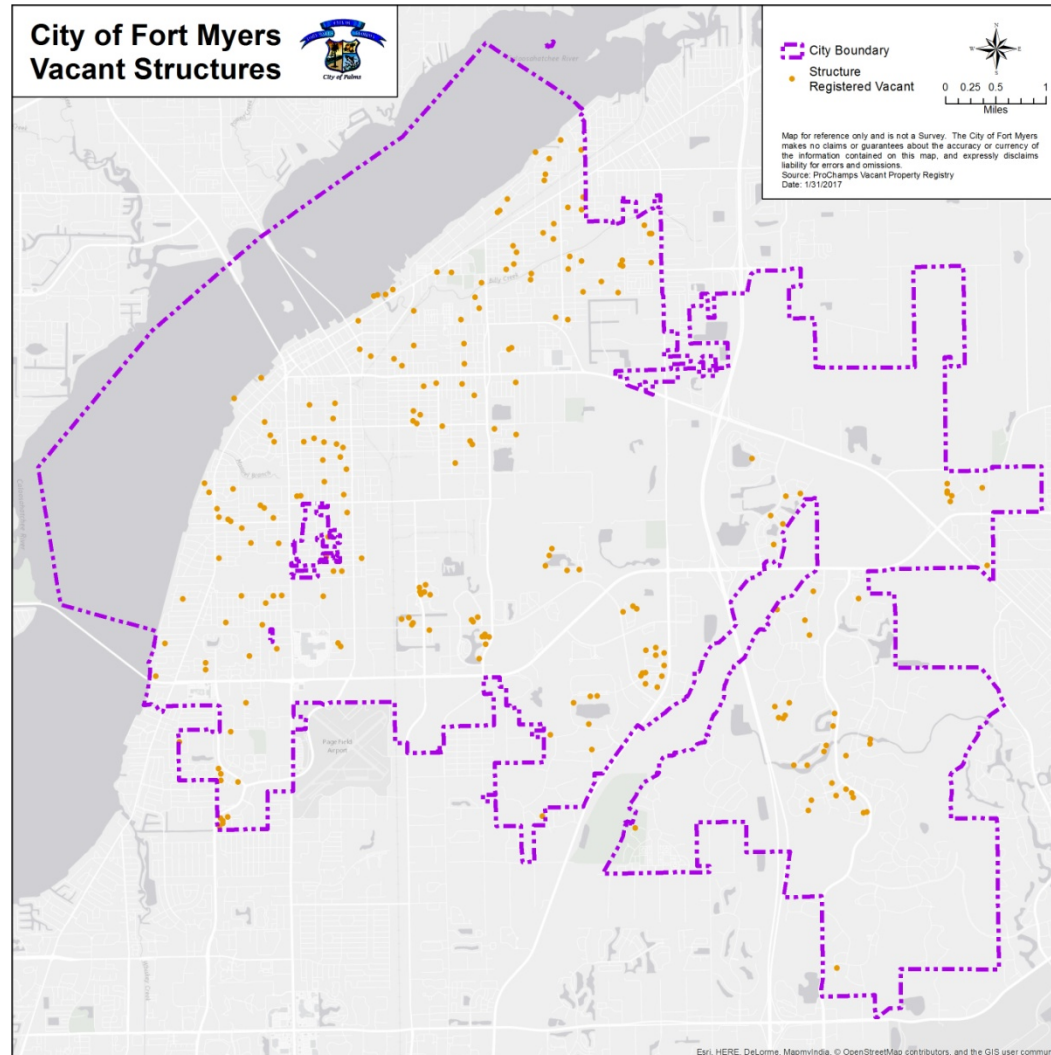
Local Map 11a– Persons living with Disabilities in Lee County near Public Facilities



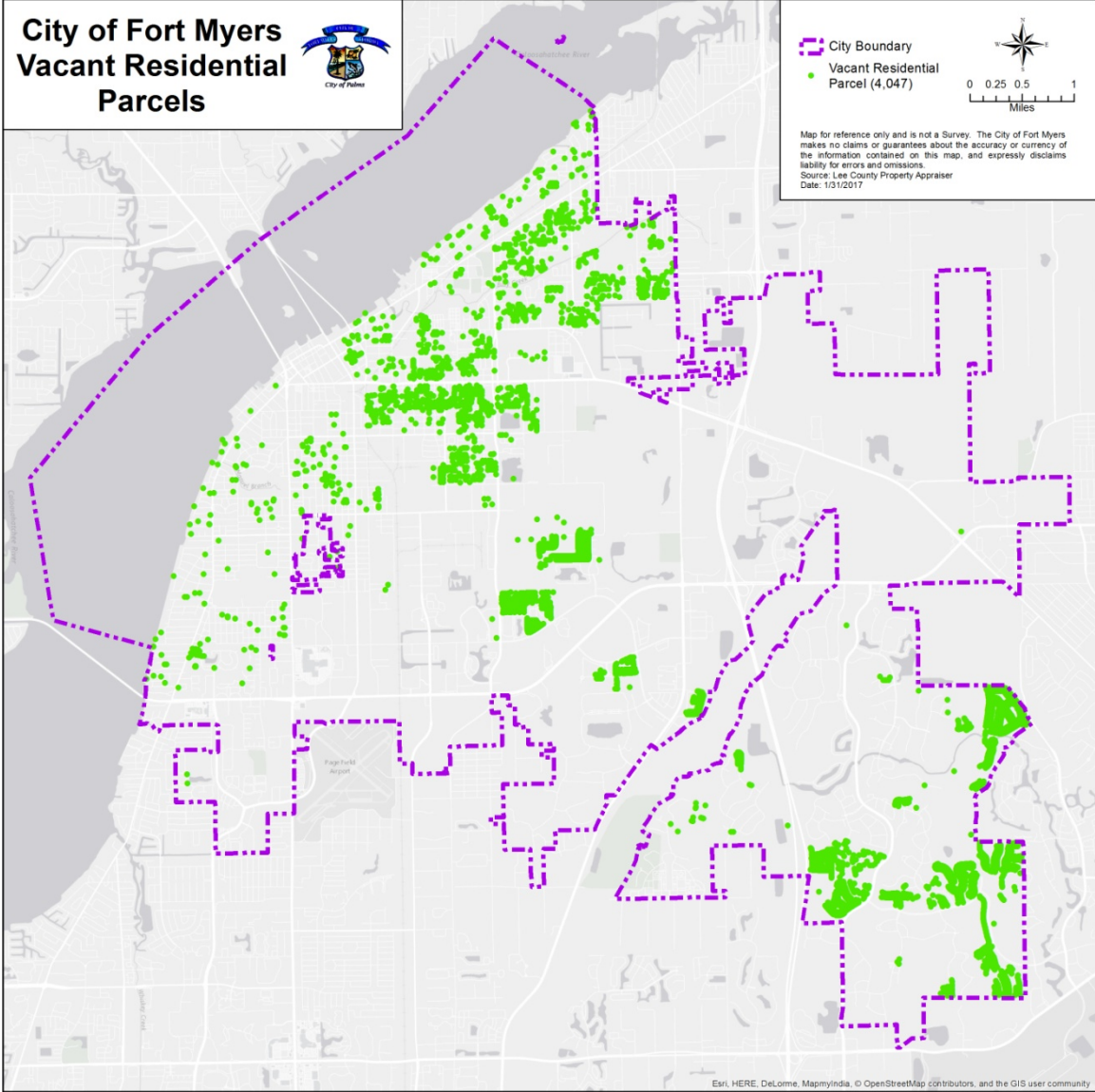
Local Map 12– Publically Supported Housing and Minority Concentration Areas



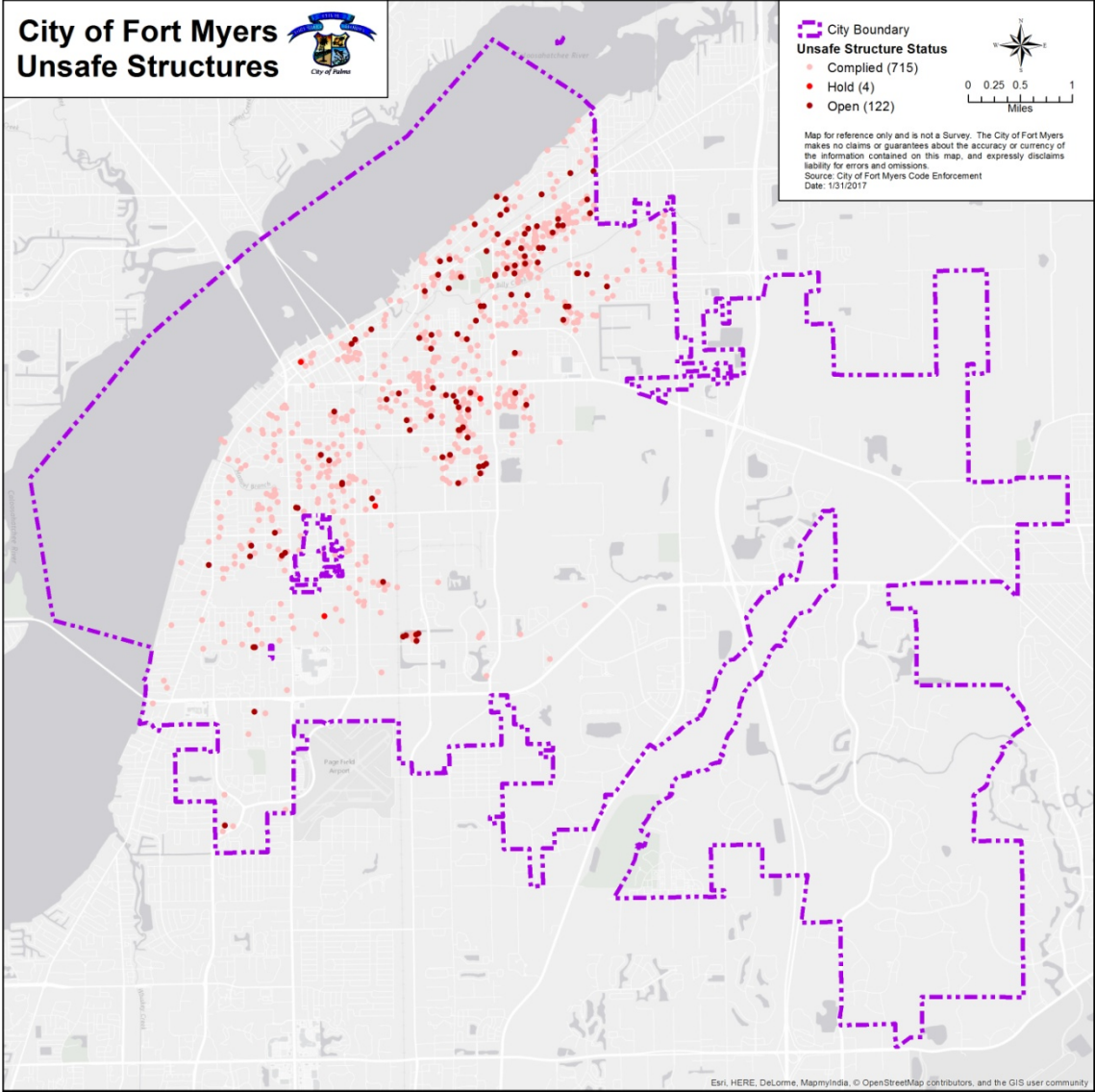
Local Map 13– City of Fort Myers Vacant Structures



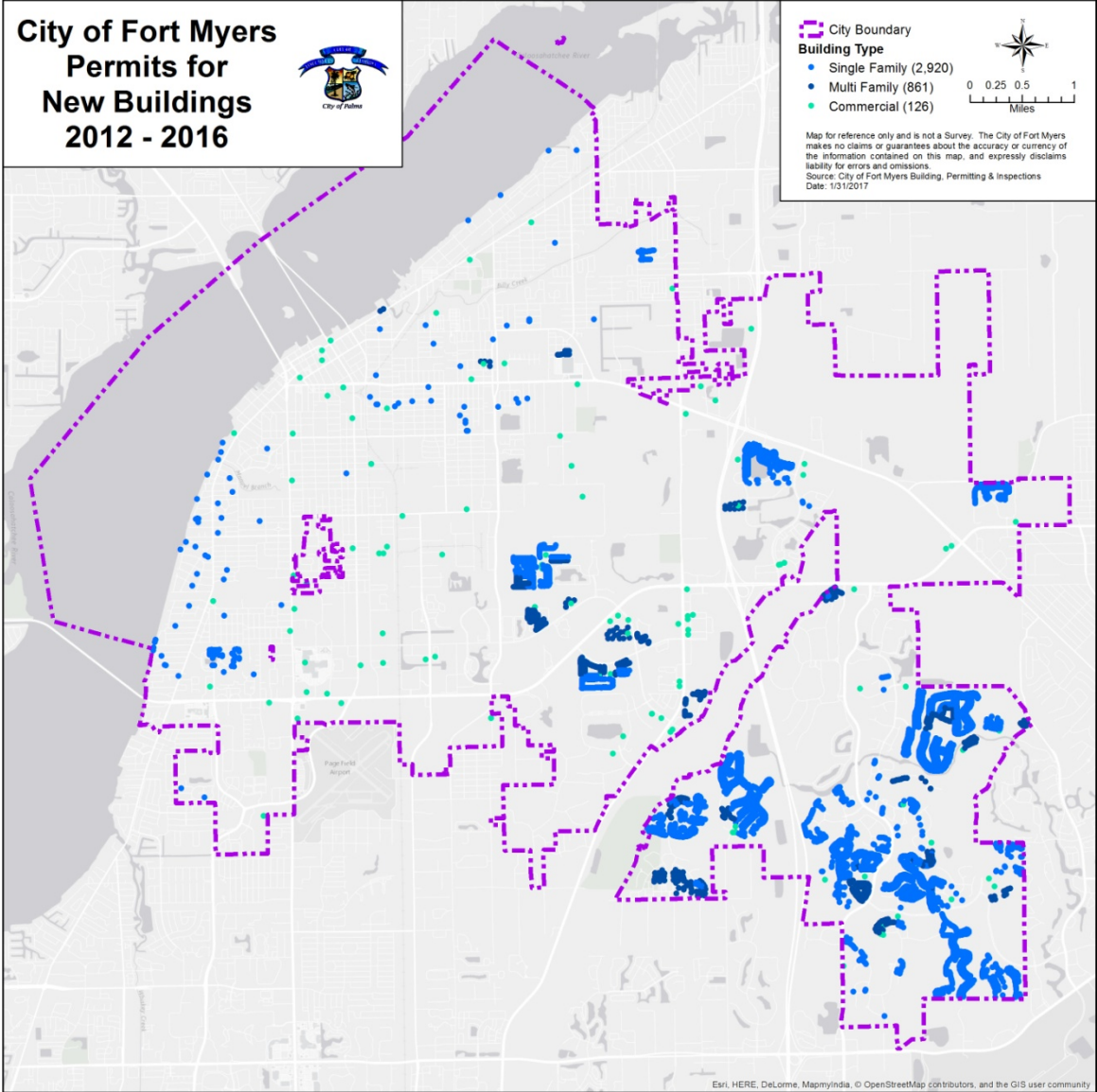
Local Map 14- City of Fort Myers Vacant Residential Parcels



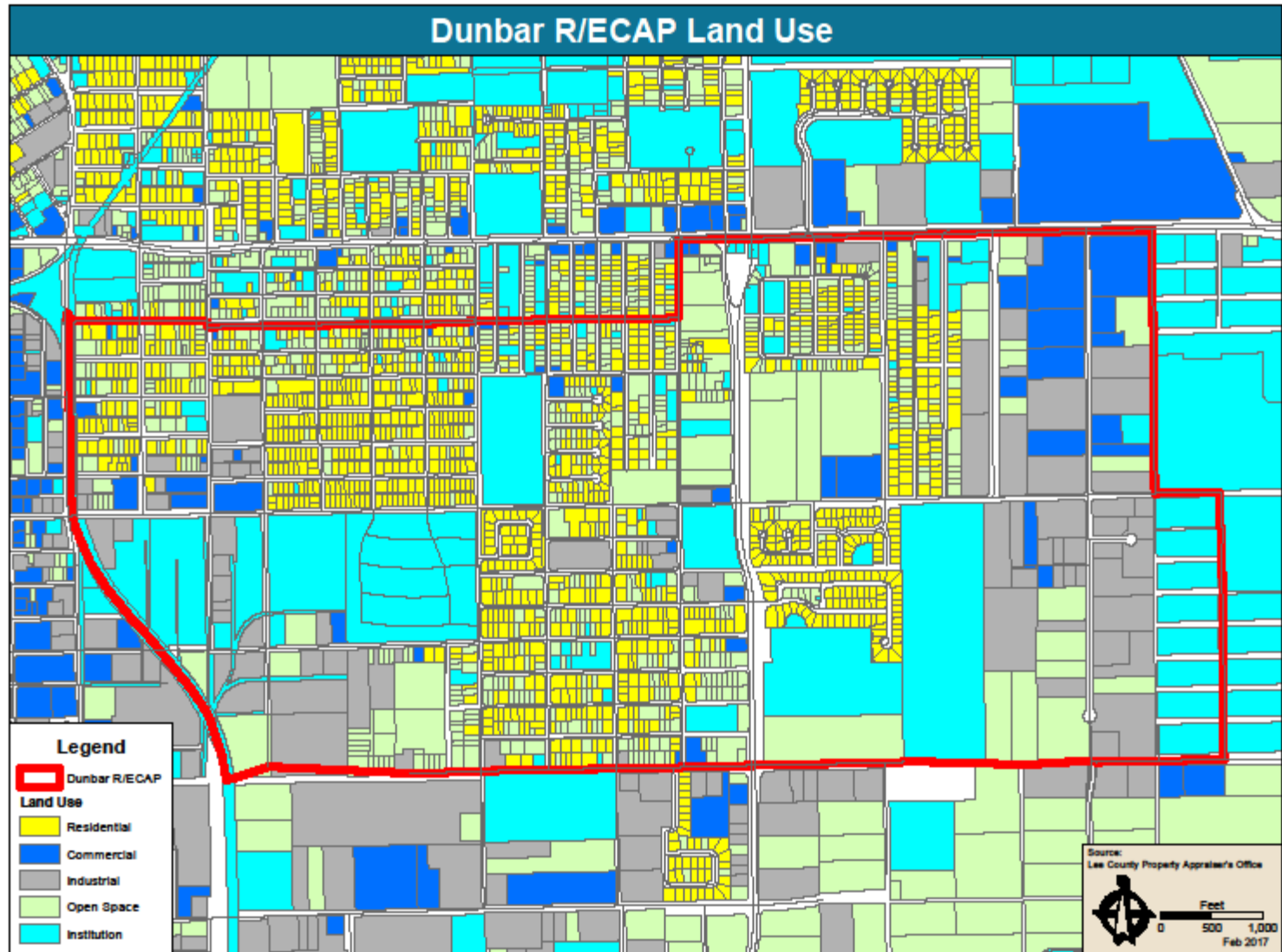
Local Map 15– City of Fort Myers Unsafe Structures



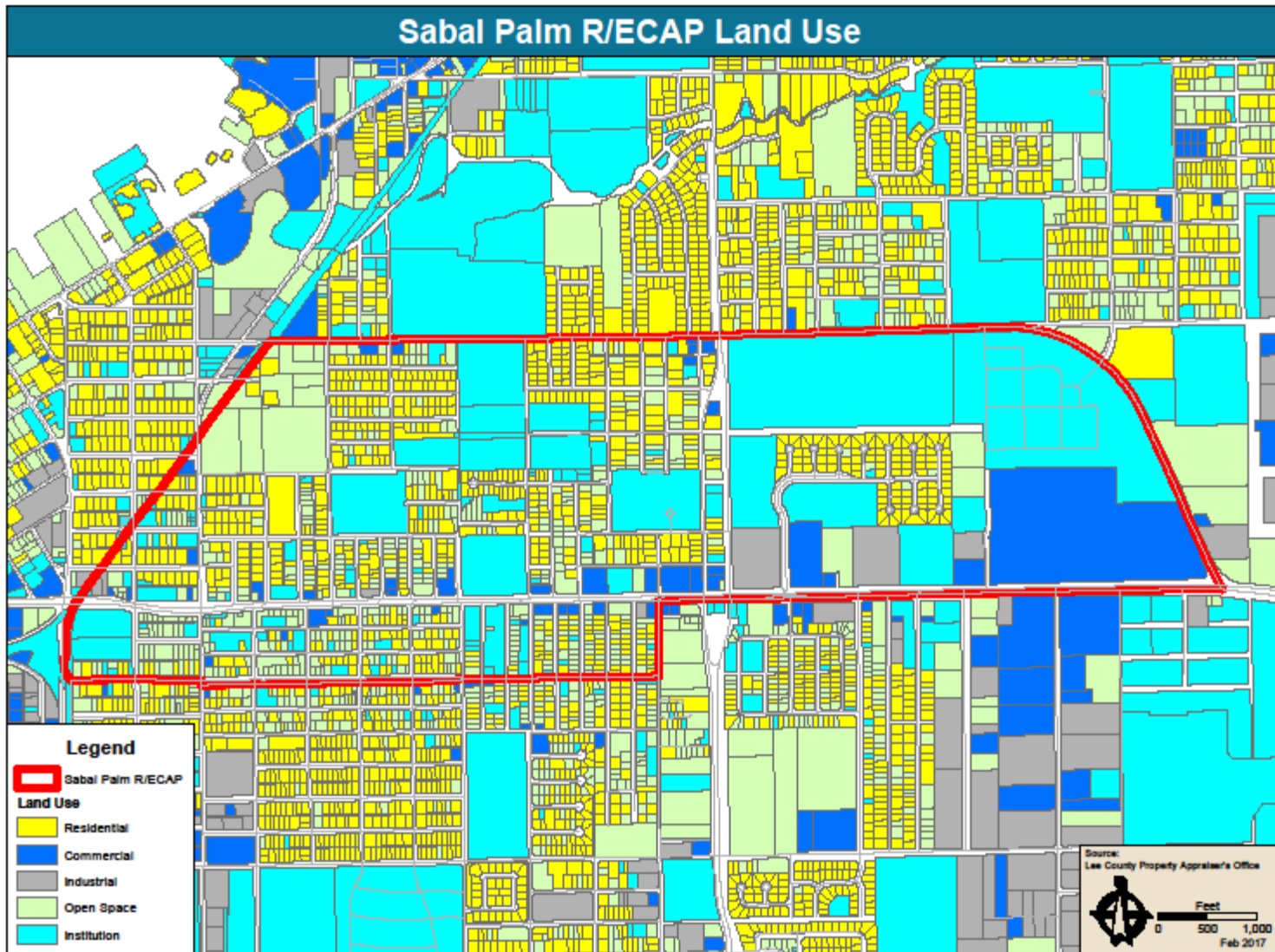
Local Map 16- City of Fort Myers New Building Permits



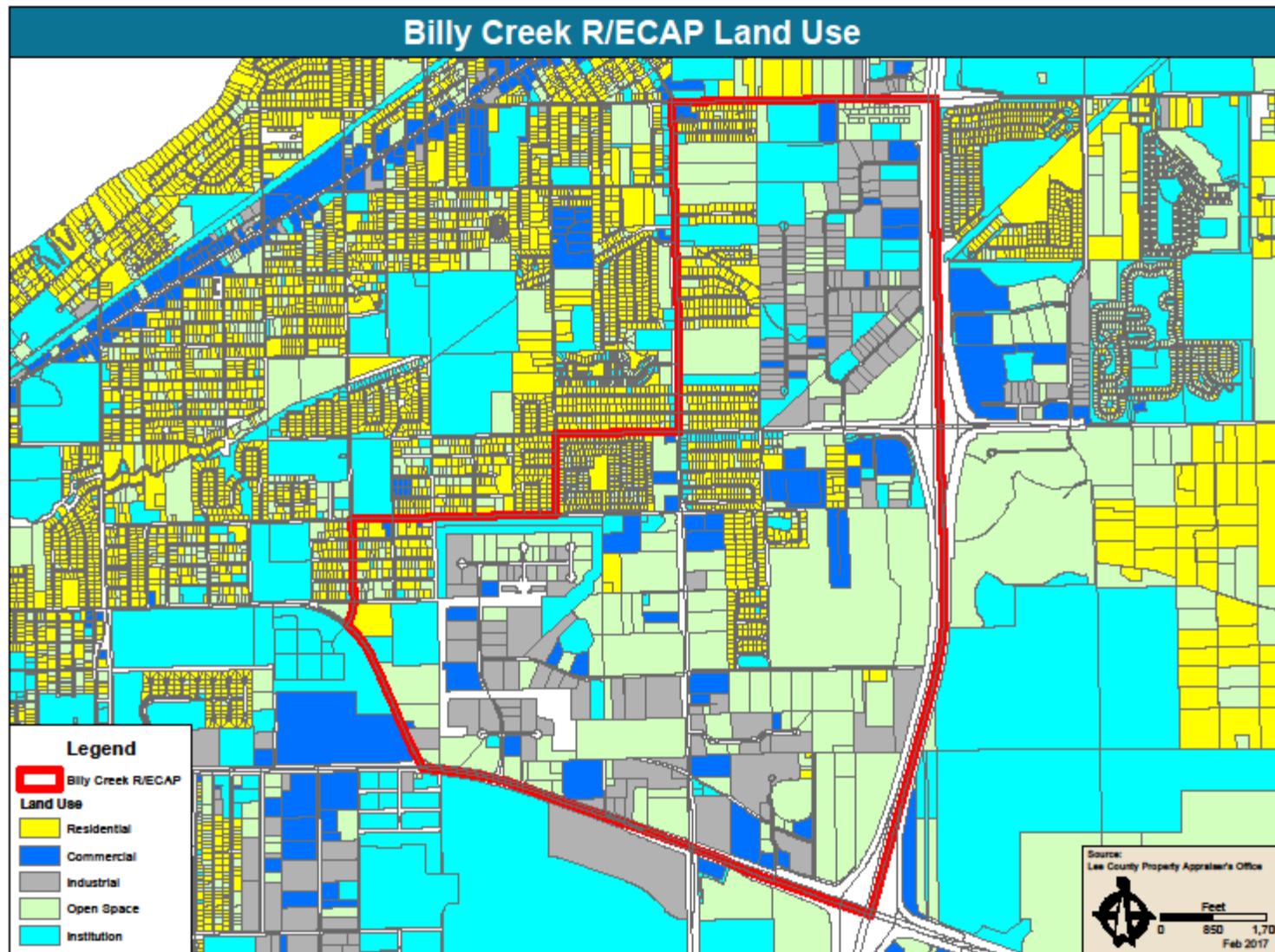
Local Map 17 – Dunbar R/ECAP – Land Use



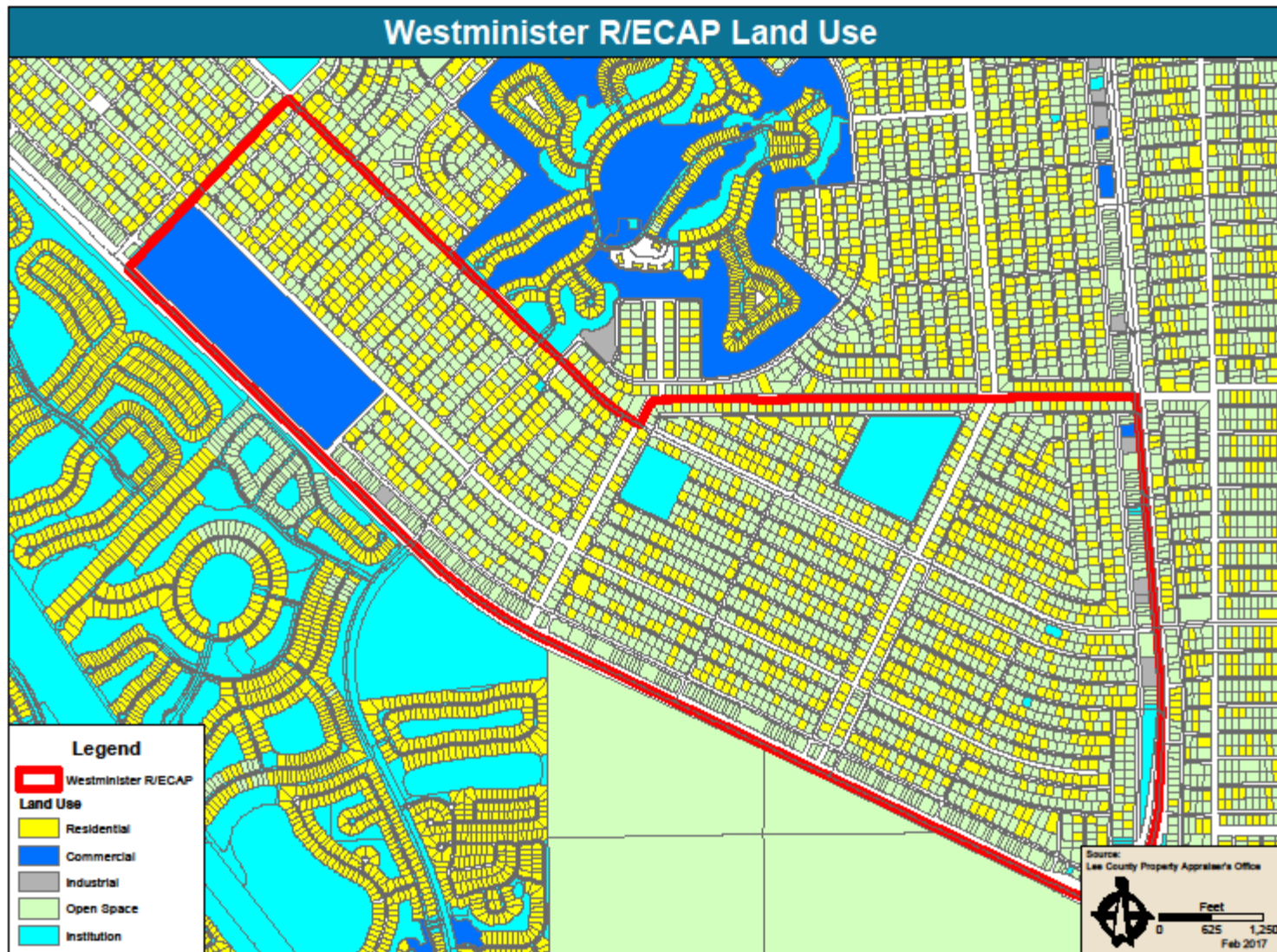
Local Map 18- Sabal Palm R/ECAP - Land Use



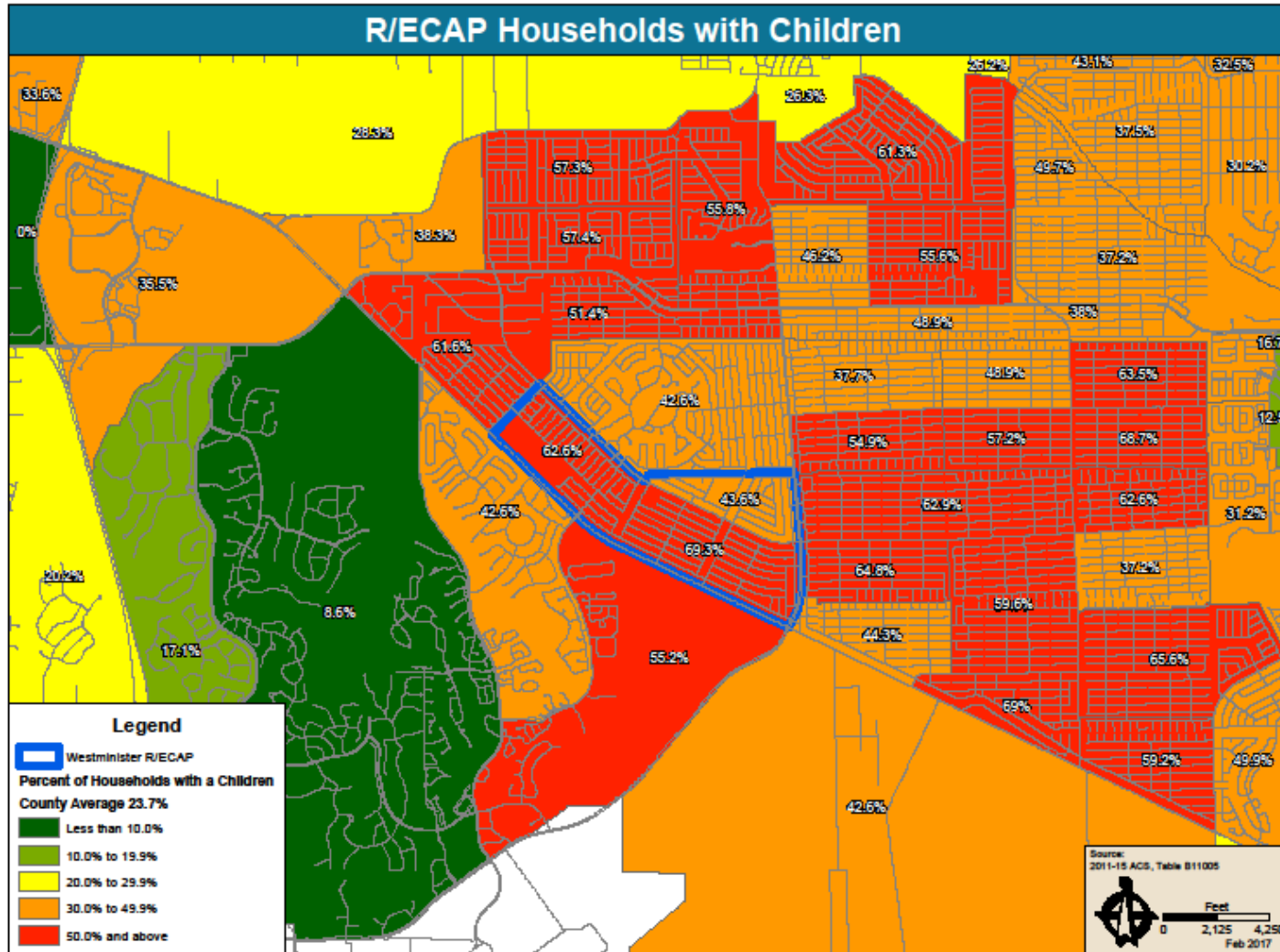
Local Map 19– Billy Creek R/ECAP – Land Use



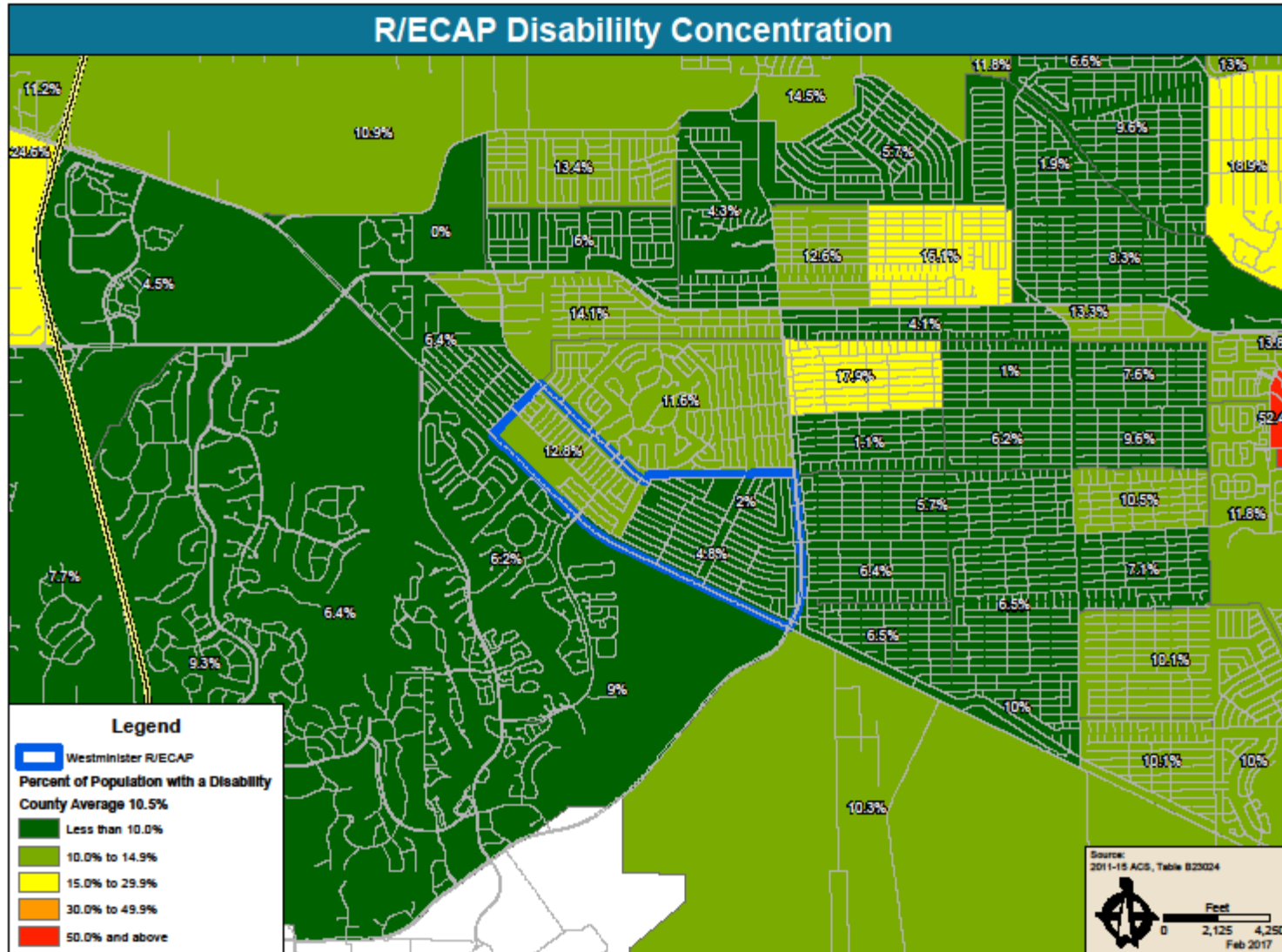
Local Map 20- Westminister R/ECAP - Land Use



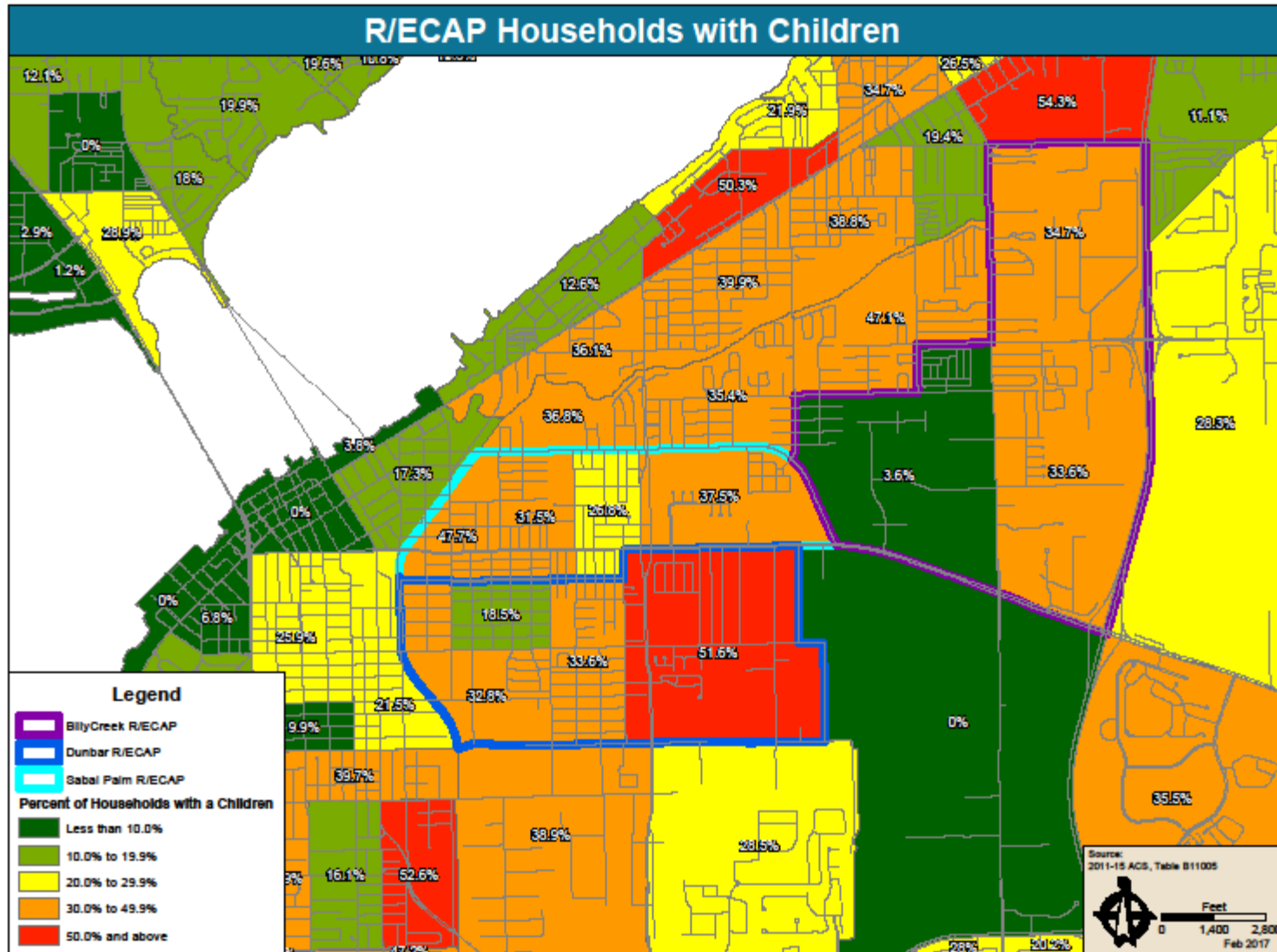
Local Map 21– Westminster R/ECAP – Households with Children



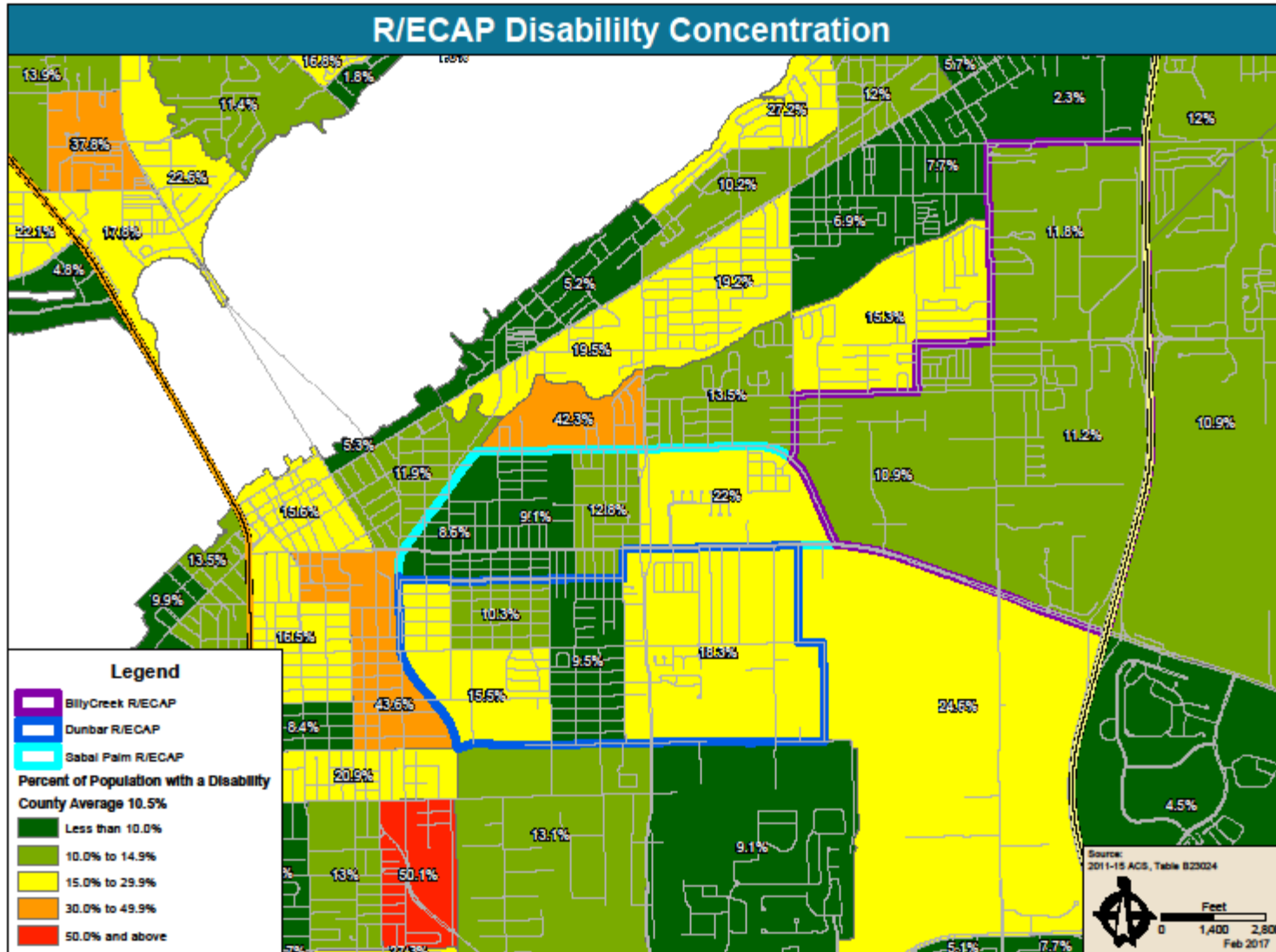
Local Map 22– Westminster R/ECAP – Persons with Disabilities



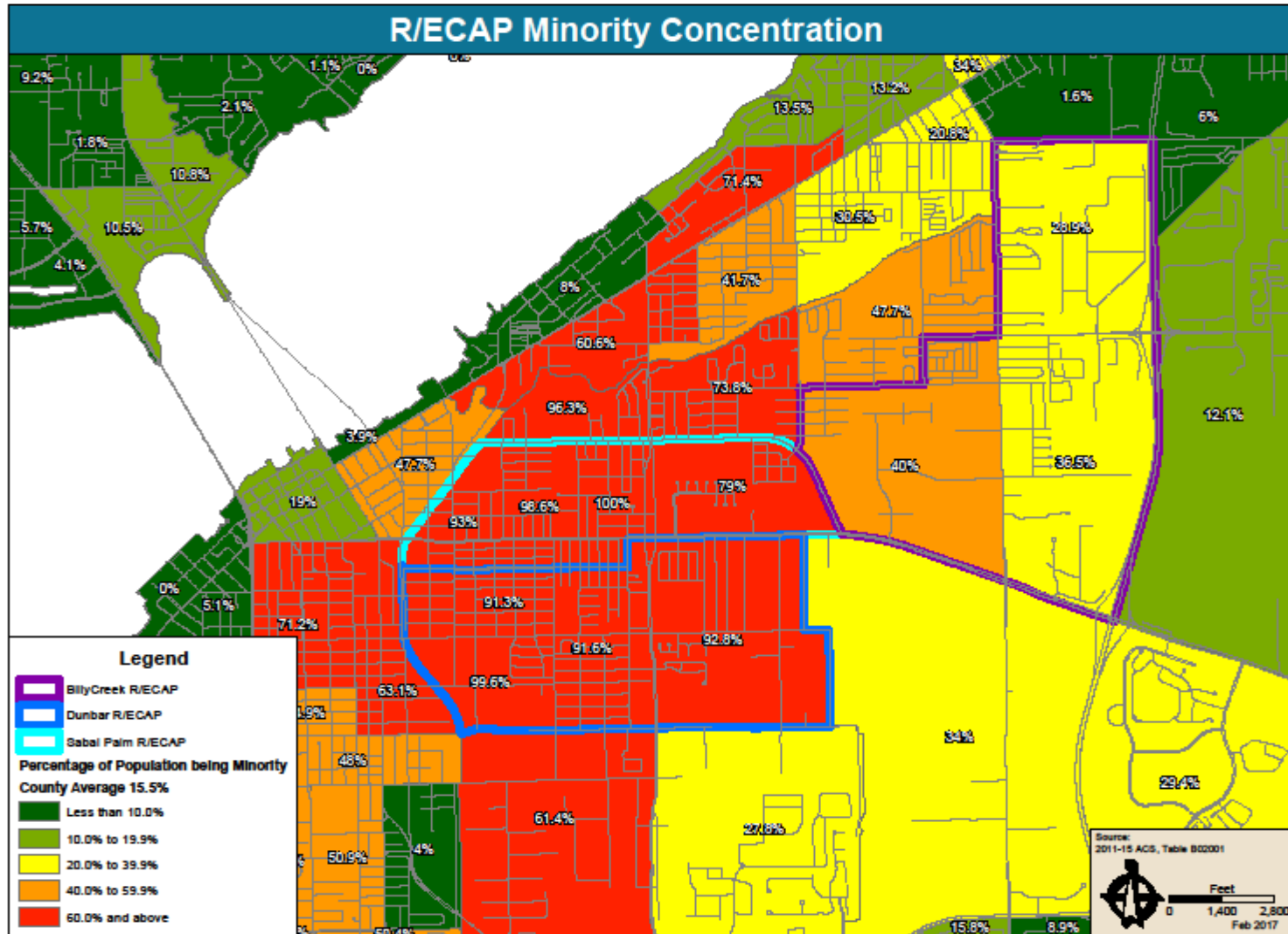
Local Map 23– City of Fort Myers R/ECAPs – Households with Children



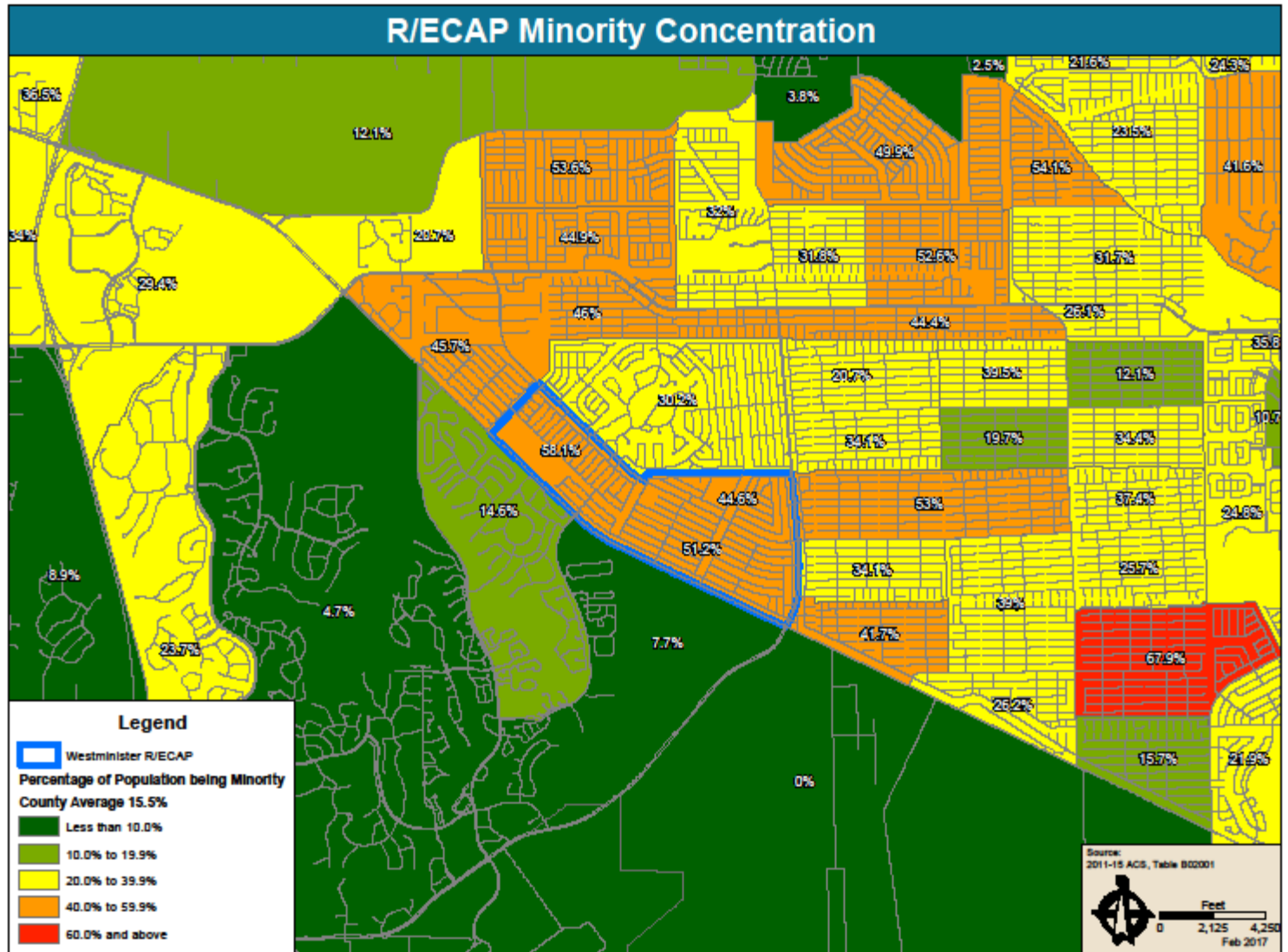
Local Map 24– City of Fort Myers R/ECAPs – Persons with Disabilities



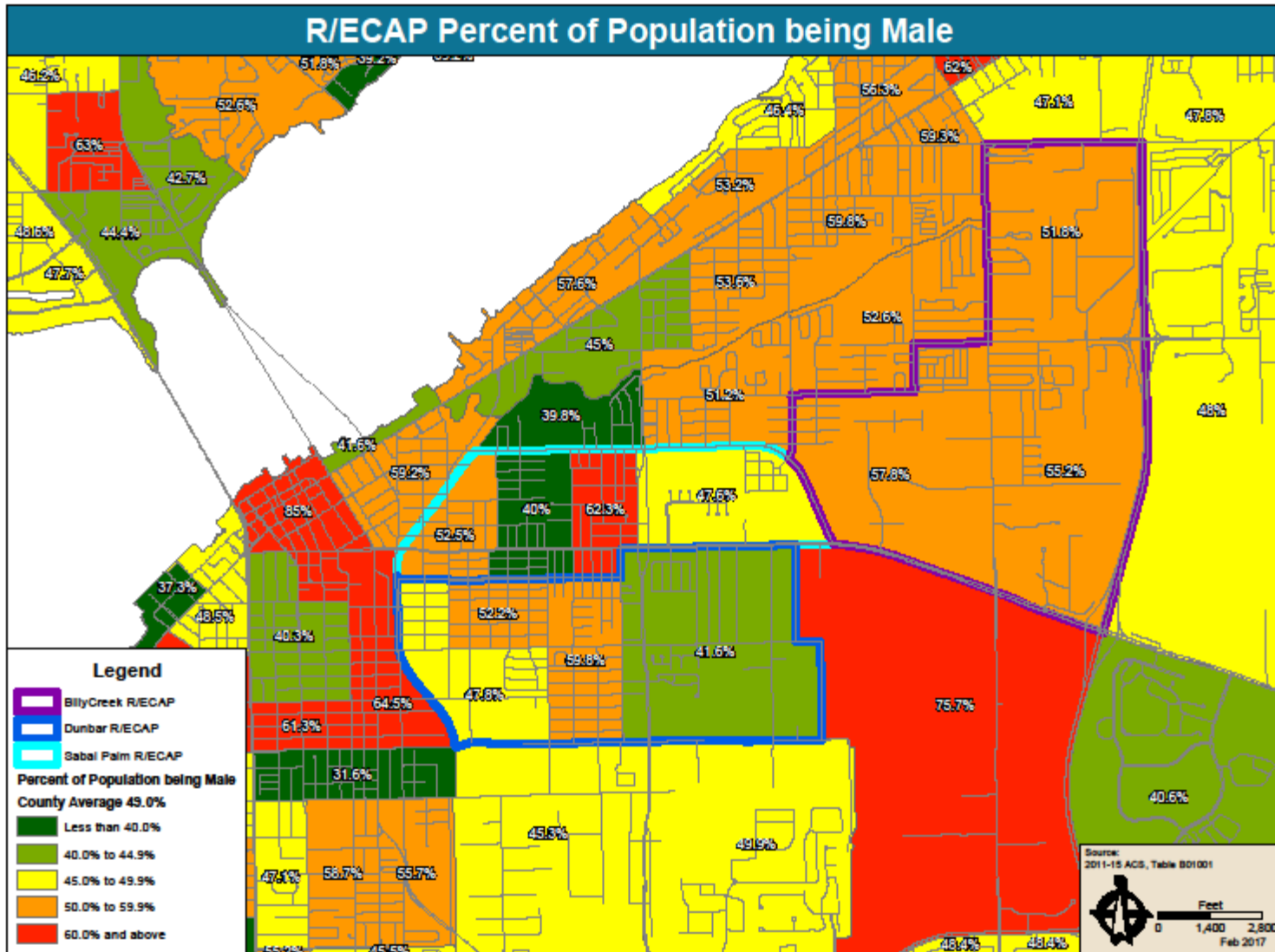
Local Map 25– City of Fort Myers R/ECAPs – Minority Concentration



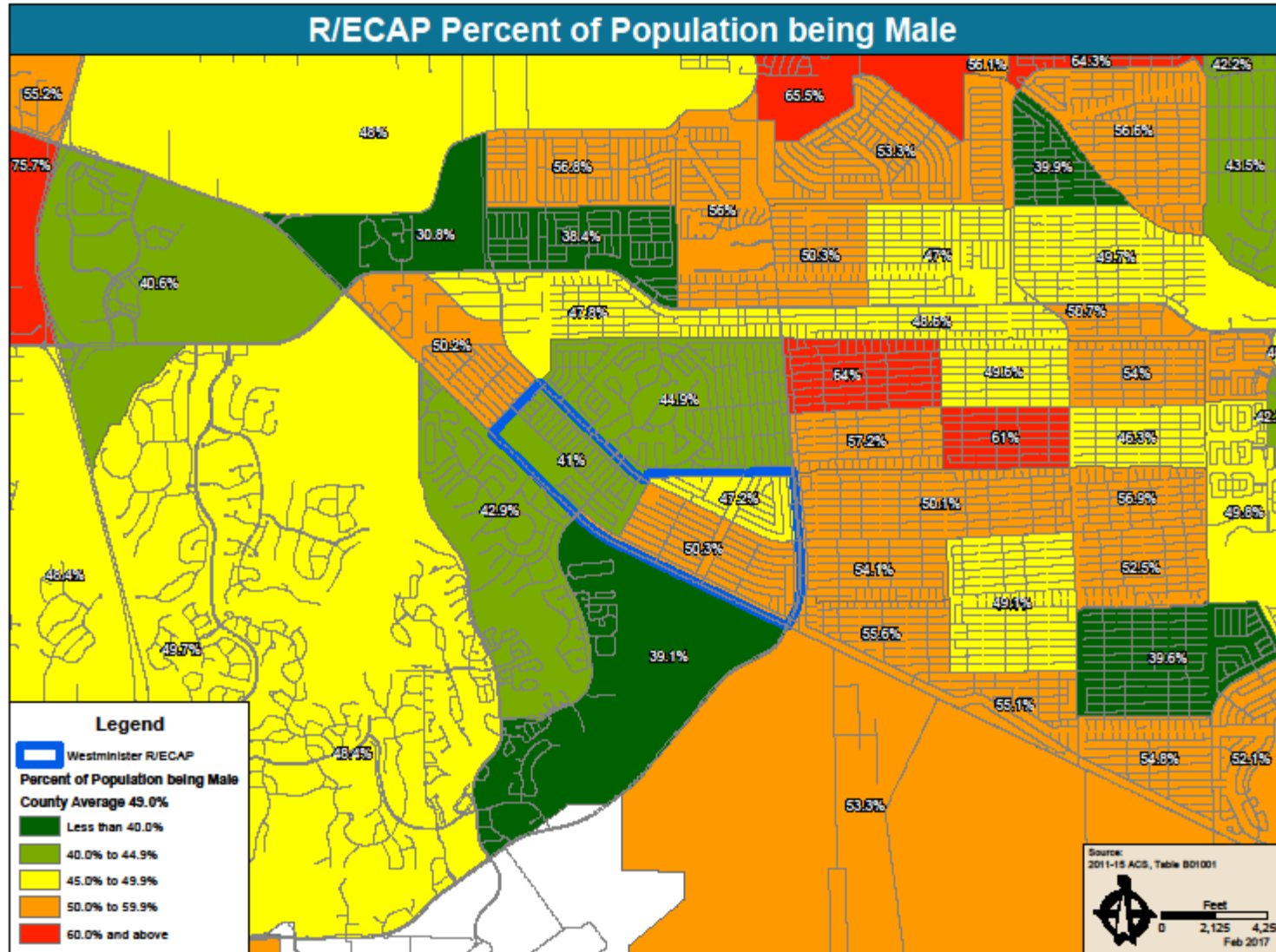
Local Map 26– Westminster R/ECAP – Minority Concentration



Local Map 27 – City of Fort Myers R/ECAPs – Gender Concentration



Local Map 28– Westminster R/ECAP – Gender Concentration



This draft of the HUD and local data to be included in the AFH is available for review and comment until March 17,2017.

Comments and questions should be addressed to Jeannie Sutton, Grants Coordinator, Lee County Department of Human and Veteran Services, 2440 Thompson Street, Fort Myers, Florida 33901, or by email to JSutton@leegov.com.

All comments will be considered in preparing the final assessment and reported in the documents.