



# Federal Emergency Management Agency

Washington, D.C. 20472

## LETTER OF MAP REVISION DETERMINATION DOCUMENT

COMMUNITY AND REVISION INFORMATION		PROJECT DESCRIPTION	BASIS OF REQUEST
COMMUNITY	Lee County Florida (Unincorporated Areas)	NO PROJECT	HYDRAULIC ANALYSIS UPDATED TOPOGRAPHIC DATA FLOODWAY
	COMMUNITY NO.: 125124		
IDENTIFIER	Diplomat RV Storage LOMR	APPROXIMATE LATITUDE AND LONGITUDE: 26.688, -81.907 SOURCE: Precision Mapping Streets DATUM: NAD 83	
ANNOTATED MAPPING ENCLOSURES		ANNOTATED STUDY ENCLOSURES	
TYPE: FIRM* NO.: 12071C0258F DATE: August 28, 2008 TYPE: FIRM* NO.: 12071C0259F DATE: August 28, 2008 TYPE: FIRM* NO.: 12071C0270F DATE: August 28, 2008 TYPE: FIRM* NO.: 12071C0267F DATE: August 28, 2008		DATE OF EFFECTIVE FLOOD INSURANCE STUDY: August 28, 2008 PROFILE: 20P FLOODWAY DATA TABLE: 9	

Enclosures reflect changes to flooding sources affected by this revision.

\* FIRM - Flood Insurance Rate Map

### FLOODING SOURCE AND REVISED REACH

East Branch Yellow Fever Creek - approximately from 700 feet upstream of Pine Island Road to approximately 170 feet upstream of Diplomat Parkway

### SUMMARY OF REVISIONS

Flooding Source	Effective Flooding	Revised Flooding	Increases	Decreases
East Branch Yellow Fever Creek	Zone AE	Zone AE	YES	YES
	Zone AE	Zone X (unshaded)	NONE	YES
	BFEs*	BFEs	NONE	YES
	Zone X (unshaded)	Zone AE	YES	NONE

\* BFEs - Base Flood Elevations

### DETERMINATION

This document provides the determination from the Department of Homeland Security's Federal Emergency Management Agency (FEMA) regarding a request for a Letter of Map Revision (LOMR) for the area described above. Using the information submitted, we have determined that a revision to the flood hazards depicted in the Flood Insurance Study (FIS) report and/or National Flood Insurance Program (NFIP) map is warranted. This document revises the effective NFIP map, as indicated in the attached documentation. Please use the enclosed annotated map panels revised by this LOMR for floodplain management purposes and for all flood insurance policies and renewals in your community.

This determination is based on the flood data presently available. The enclosed documents provide additional information regarding this determination. If you have any questions about this document, please contact the FEMA Map Information eXchange toll free at 1-877-336-2627 (1-877-FEMA MAP) or by letter addressed to the LOMC Clearinghouse, 3601 Eisenhower Avenue, Suite 500, Alexandria, VA 22304-6426. Additional Information about the NFIP is available on our website at <http://www.fema.gov/national-flood-insurance-program>.

Patrick "Rick" F. Sacbibit, P.E., Branch Chief  
Engineering Services Branch  
Federal Insurance and Mitigation Administration



# Federal Emergency Management Agency

Washington, D.C. 20472

## LETTER OF MAP REVISION DETERMINATION DOCUMENT (CONTINUED)

### OTHER COMMUNITIES AFFECTED BY THIS REVISION

**CID Number:** 125095      **Name:** City of Cape Coral, Florida

#### AFFECTED MAP PANEL

TYPE: FIRM\*      NO.: 12071C0258F      DATE: August 28, 2008  
TYPE: FIRM\*      NO.: 12071C0270F      DATE: August 28, 2008

#### AFFECTED PORTIONS OF THE FLOOD INSURANCE STUDY REPORT

DATE OF EFFECTIVE FLOOD INSURANCE STUDY: August 28, 2008  
PROFILE: 20P  
FLOODWAY DATA TABLE: 9

This determination is based on the flood data presently available. The enclosed documents provide additional information regarding this determination. If you have any questions about this document, please contact the FEMA Map Information eXchange toll free at 1-877-336-2627 (1-877-FEMA MAP) or by letter addressed to the LOMC Clearinghouse, 3601 Eisenhower Avenue, Suite 500, Alexandria, VA 22304-6426. Additional Information about the NFIP is available on our website at <http://www.fema.gov/national-flood-insurance-program>.

A handwritten signature in black ink, appearing to read "Rick F. Sacbibit".

Patrick "Rick" F. Sacbibit, P.E., Branch Chief  
Engineering Services Branch  
Federal Insurance and Mitigation Administration



## Federal Emergency Management Agency

Washington, D.C. 20472

### LETTER OF MAP REVISION DETERMINATION DOCUMENT (CONTINUED)

#### COMMUNITY INFORMATION

##### APPLICABLE NFIP REGULATIONS/COMMUNITY OBLIGATION

We have made this determination pursuant to Section 206 of the Flood Disaster Protection Act of 1973 (P.L. 93-234) and in accordance with the National Flood Insurance Act of 1968, as amended (Title XIII of the Housing and Urban Development Act of 1968, P.L. 90-448), 42 U.S.C. 4001-4128, and 44 CFR Part 65. Pursuant to Section 1361 of the National Flood Insurance Act of 1968, as amended, communities participating in the NFIP are required to adopt and enforce floodplain management regulations that meet or exceed NFIP criteria. These criteria, including adoption of the FIS report and FIRM, and the modifications made by this LOMR, are the minimum requirements for continued NFIP participation and do not supersede more stringent State/Commonwealth or local requirements to which the regulations apply.

##### COMMUNITY REMINDERS

We based this determination on the 1-percent-annual-chance flood discharges computed in the FIS for your community without considering subsequent changes in watershed characteristics that could increase flood discharges. Future development of projects upstream could cause increased flood discharges, which could cause increased flood hazards. A comprehensive restudy of your community's flood hazards would consider the cumulative effects of development on flood discharges subsequent to the publication of the FIS report for your community and could, therefore, establish greater flood hazards in this area.

Your community must regulate all proposed floodplain development and ensure that permits required by Federal and/or State/Commonwealth law have been obtained. State/Commonwealth or community officials, based on knowledge of local conditions and in the interest of safety, may set higher standards for construction or may limit development in floodplain areas. If your State/Commonwealth or community has adopted more restrictive or comprehensive floodplain management criteria, those criteria take precedence over the minimum NFIP requirements.

We will not print and distribute this LOMR to primary users, such as local insurance agents or mortgage lenders; instead, the community will serve as a repository for the new data. We encourage you to disseminate the information in this LOMR by preparing a news release for publication in your community's newspaper that describes the revision and explains how your community will provide the data and help interpret the NFIP maps. In that way, interested persons, such as property owners, insurance agents, and mortgage lenders, can benefit from the information.

The changes in the floodway widths are minimal hence there is no revision to the floodway boundary on the revised FIRMs. However, the Floodway Data Table is revised to reflect the flood hazard data computed in the submitted hydraulic analysis.

This determination is based on the flood data presently available. The enclosed documents provide additional information regarding this determination. If you have any questions about this document, please contact the FEMA Map Information eXchange toll free at 1-877-336-2627 (1-877-FEMA MAP) or by letter addressed to the LOMC Clearinghouse, 3601 Eisenhower Avenue, Suite 500, Alexandria, VA 22304-6426. Additional Information about the NFIP is available on our website at <http://www.fema.gov/national-flood-insurance-program>.

A handwritten signature in black ink, appearing to read "Rick F. Sacbibit".

Patrick "Rick" F. Sacbibit, P.E., Branch Chief  
Engineering Services Branch  
Federal Insurance and Mitigation Administration



## Federal Emergency Management Agency

Washington, D.C. 20472

### LETTER OF MAP REVISION DETERMINATION DOCUMENT (CONTINUED)

We have designated a Consultation Coordination Officer (CCO) to assist your community. The CCO will be the primary liaison between your community and FEMA. For information regarding your CCO, please contact:

Mr. Jesse Munoz  
Director, Mitigation Division  
Federal Emergency Management Agency, Region IV  
Koger Center - Rutgers Building, 3003 Chamblee Tucker Road  
Atlanta, GA 30341  
(770) 220-5406

#### STATUS OF THE COMMUNITY NFIP MAPS

We are processing a revised FIRM and FIS report for Lee County in our countywide format; therefore, we will not physically revise and republish the FIRM and FIS report for your community to incorporate the modifications made by this LOMR at this time. Preliminary copies of the countywide FIRM and FIS report, which present information from the effective FIRMs and FIS reports for your community and other incorporated communities in Lee County, were submitted to your community for review on December 15, 2014. We will incorporate the modifications made by this LOMR into the countywide FIRM and FIS report before they become effective.

This determination is based on the flood data presently available. The enclosed documents provide additional information regarding this determination. If you have any questions about this document, please contact the FEMA Map Information eXchange toll free at 1-877-336-2627 (1-877-FEMA MAP) or by letter addressed to the LOMC Clearinghouse, 3601 Eisenhower Avenue, Suite 500, Alexandria, VA 22304-6426. Additional Information about the NFIP is available on our website at <http://www.fema.gov/national-flood-insurance-program>.

A handwritten signature in black ink, appearing to read "Rick F. Sacbibit".

Patrick "Rick" F. Sacbibit, P.E., Branch Chief  
Engineering Services Branch  
Federal Insurance and Mitigation Administration





# Federal Emergency Management Agency

Washington, D.C. 20472

## LETTER OF MAP REVISION DETERMINATION DOCUMENT (CONTINUED)

### PUBLIC NOTIFICATION OF REVISION

A notice of changes will be published in the *Federal Register*. This information also will be published in your local newspaper on or about the dates listed below, and through FEMA's Flood Hazard Mapping website at

[https://www.floodmaps.fema.gov/fhm/bfe\\_status/bfe\\_main.asp](https://www.floodmaps.fema.gov/fhm/bfe_status/bfe_main.asp)

#### LOCAL NEWSPAPER

Name: *Fort Myers News-Press*

Dates: October 19, 2017 and October 26, 2017

Within 90 days of the second publication in the local newspaper, any interested party may request that we reconsider this determination. Any request for reconsideration must be based on scientific or technical data. Therefore, this letter will be effective only after the 90-day appeal period has elapsed and we have resolved any appeals that we receive during this appeal period. Until this LOMR is effective, the revised flood hazard determination presented in this LOMR may be changed.

This determination is based on the flood data presently available. The enclosed documents provide additional information regarding this determination. If you have any questions about this document, please contact the FEMA Map Information eXchange toll free at 1-877-336-2627 (1-877-FEMA MAP) or by letter addressed to the LOMC Clearinghouse, 3601 Eisenhower Avenue, Suite 500, Alexandria, VA 22304-6426. Additional Information about the NFIP is available on our website at <http://www.fema.gov/national-flood-insurance-program>.

A handwritten signature in black ink, appearing to read "Rick F. Sacbibit".

Patrick "Rick" F. Sacbibit, P.E., Branch Chief  
Engineering Services Branch  
Federal Insurance and Mitigation Administration

FLOODING SOURCE		FLOODWAY			BASE FLOOD WATER SURFACE ELEVATION (FEET NAVD)			
CROSS SECTION	DISTANCE <sup>1</sup>	WIDTH (FEET)	SECTION AREA (SQUARE FEET)	MEAN VELOCITY (FEET PER SECOND)	REGULATORY	WITHOUT FLOODWAY	WITH FLOODWAY	INCREASE
EAST BRANCH DAUGHTREY CREEK (Continued)								
T	18,154	235	554	1.1	21.6	21.6	22.4	0.8
U	20,668	410	1,334	0.5	22.7	22.7	23.7	1.0
V	22,453	997	1,831	0.3	22.8	22.8	23.8	1.0
EAST BRANCH YELLOW FEVER CREEK							REVISED DATA	
A	0	212	256	4.7	6.8 <sup>2</sup>	3.2 <sup>3</sup>	3.9	0.7
B	1,130	212	673	1.8	6.8	6.8	7.8	1.0
C	1,780	238	994	1.2	7.4	7.4	8.4	1.0
D	2,180	249	800	1.5	11.0	11.0	11.9	0.9
E	3,347	50	325	3.1	12.6	12.6	13.4	0.8
F	3,844	62	419	2.4	13.0	13.0	13.8	0.8
G	5,126	122	351	2.9	14.1	14.1	14.8	0.7
H	7,950	86	461	1.9	15.1	15.1	16.1	1.0
I	10,429	237	531	1.4	15.6	15.6	16.5	0.9

<sup>1</sup>Feet above mouth.

<sup>2</sup>Elevation computed without consideration of wave effects.

<sup>3</sup>Elevation computed without consideration of backwater effects from Caloosahatchee River

DATA REVISED BY LOMR  
DATED JANUARY 3, 2011

TABLE 9

FEDERAL EMERGENCY MANAGEMENT AGENCY

LEE COUNTY, FL  
AND INCORPORATED AREAS

FLOODWAY DATA

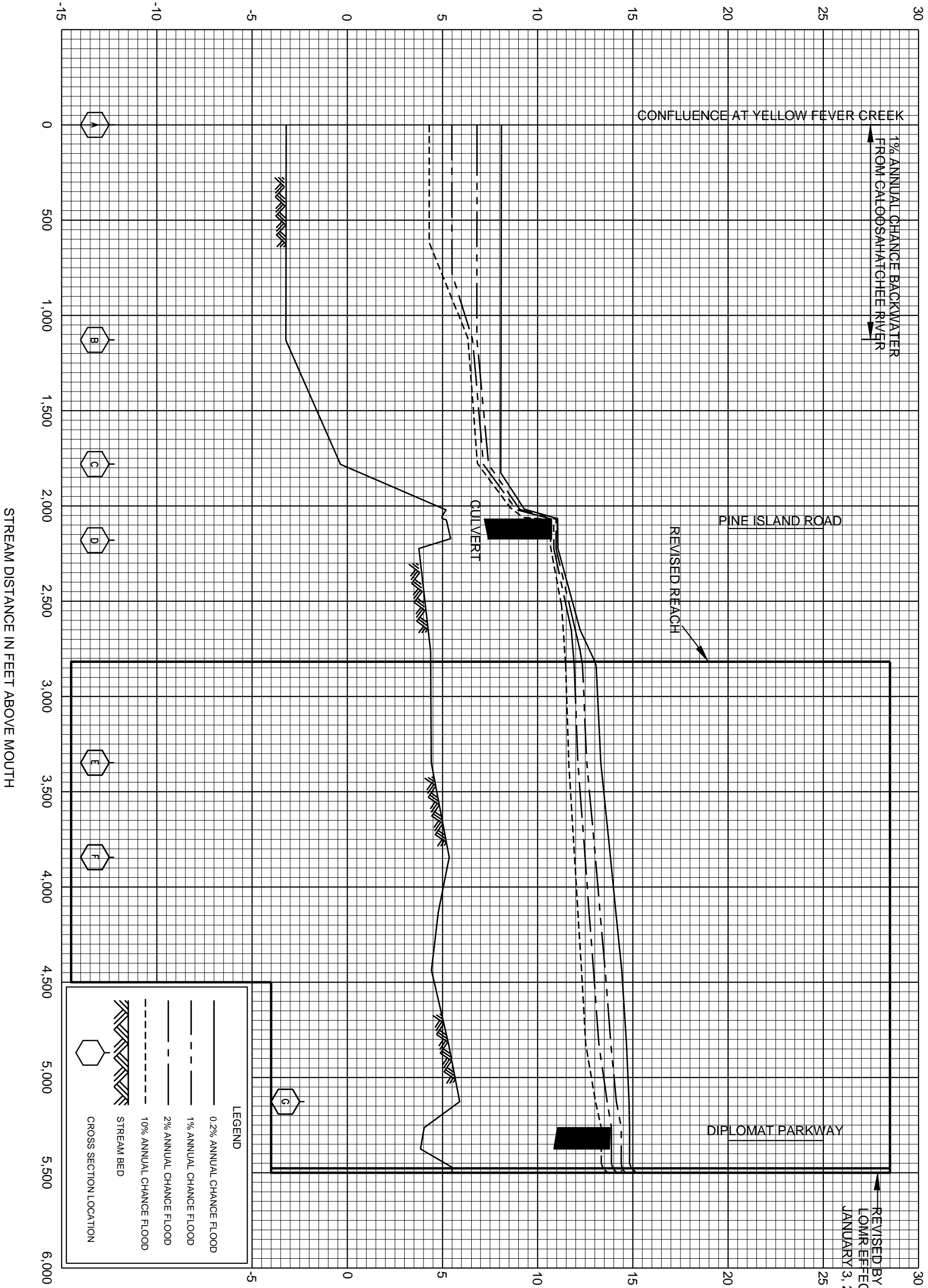
REVISED TO

REFLECT LOMR

EFFECTIVE: February 23, 2018

EAST BRANCH DAUGHTREY CREEK – EAST BRANCH YELLOW FEVER CREEK

ELEVATION IN FEET (NAVD 88)

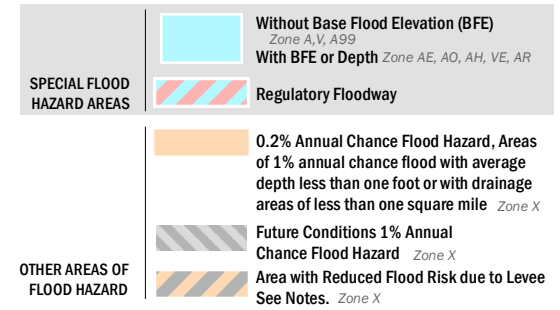
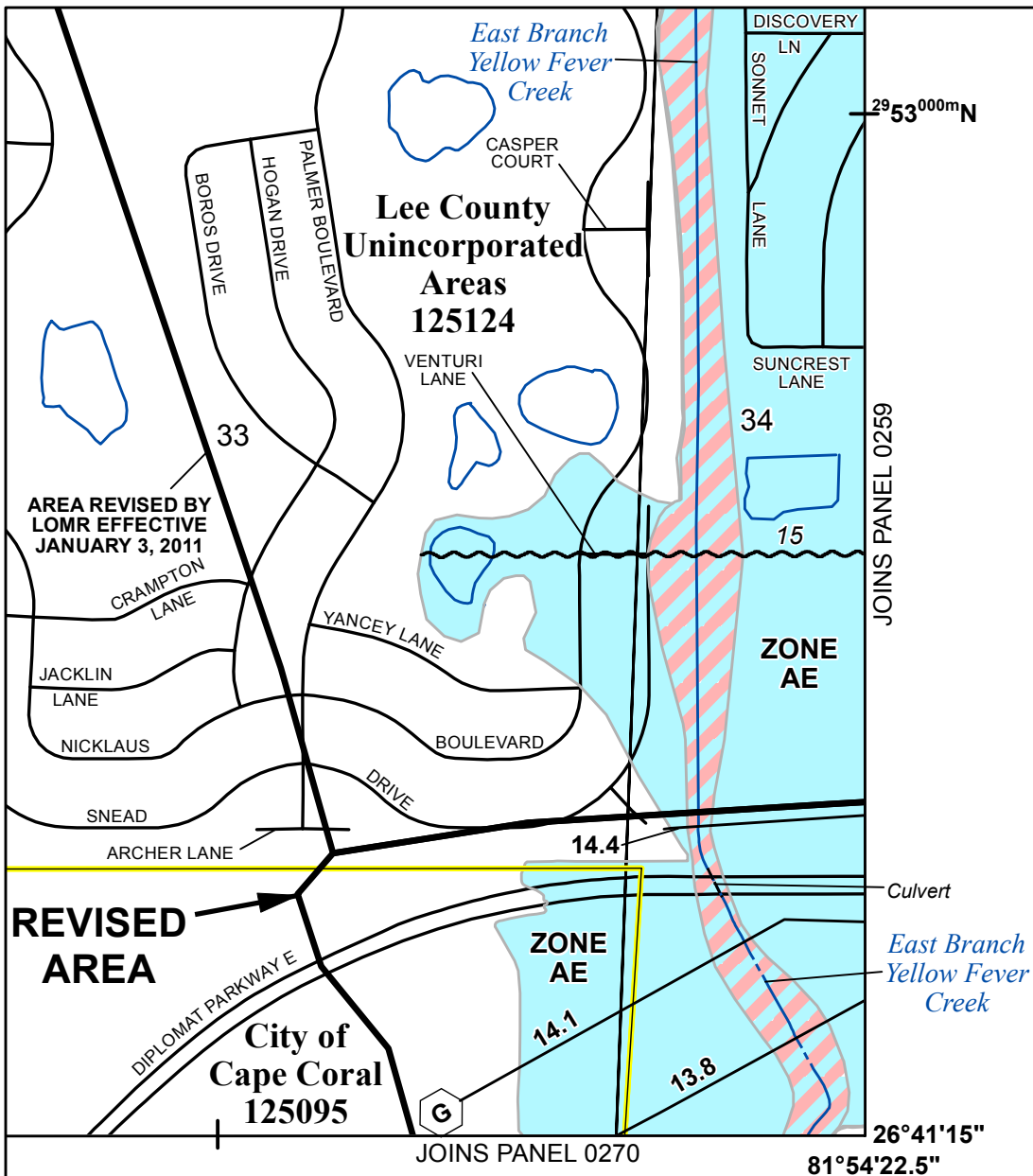


FEDERAL EMERGENCY MANAGEMENT AGENCY

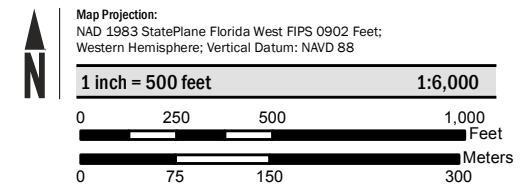
LEE COUNTY, FL  
AND INCORPORATED AREAS

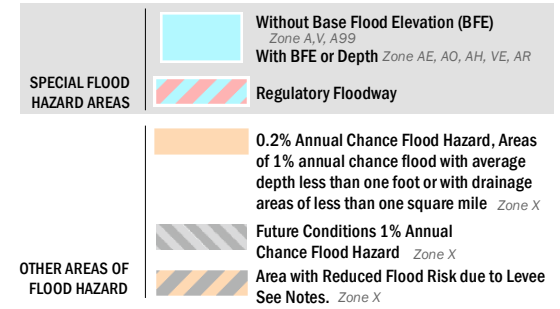
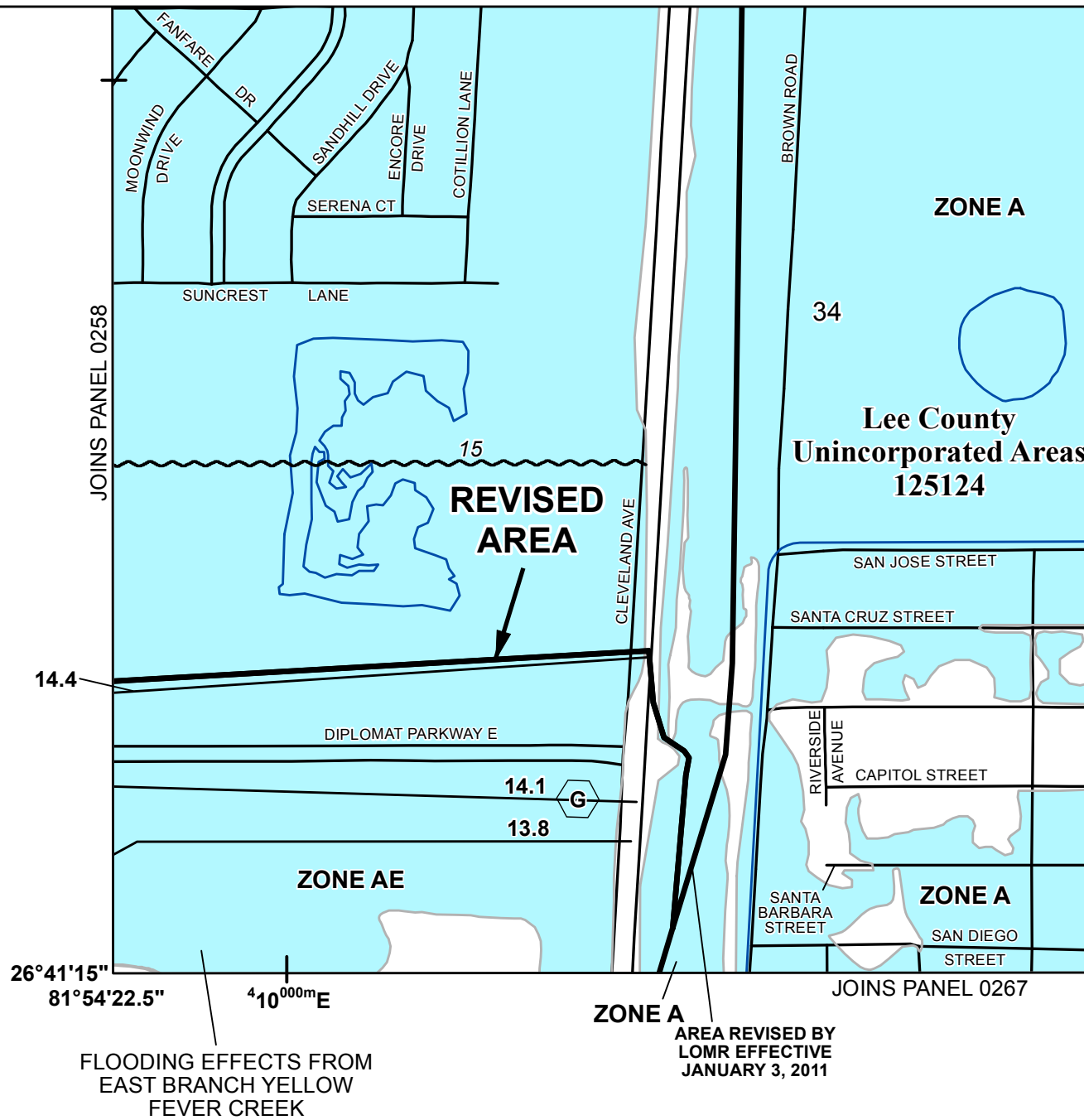
FLOOD PROFILES

EAST BRANCH YELLOW FEVER CREEK

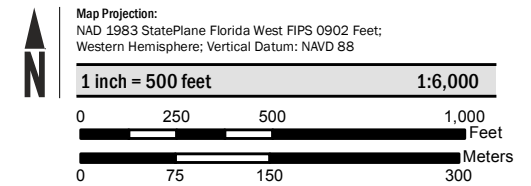


## SCALE





#### SCALE



**FEMA**  
National Flood Insurance Program

#### NATIONAL FLOOD INSURANCE PROGRAM FLOOD INSURANCE RATE MAP

**LEE COUNTY, FLORIDA**  
and Incorporated Areas  
**PANEL 259 OF 685**

Panel Contains:

COMMUNITY	NUMBER	PANEL	SUFFIX
CAPE CORAL, CITY OF	125095	0259	F
LEE COUNTY	125124	0259	F

**REVISED TO REFLECT LOMR  
EFFECTIVE: February 23, 2018**

VERSION NUMBER  
**2.1.3.0**  
MAP NUMBER  
**12071C0259F**  
EFFECTIVE DATE  
**AUGUST 28, 2008**

81°54'22.5"  
26°41'15"

JOINS PANEL 0259

ZONE AE

CURT DRYE ROAD

Lee County  
Unincorporated Areas  
125124

STOCKTON ST

RIVERSIDE AVENUE  
SACRAMENTO ST

855000 FT

ZONE AE

ZONE AE

41

N CLEVELAND AVE

BROWN RD

STATE ST

34  
CLARK ST

RIVERSIDE AVENUE  
ELLIS ST

ZONE A

SAN BERNARDINO ST

REDLIN ST

PINE ISLAND RD

JOINS PANEL 0270

12.6

REVISED AREA

12.3

12

11

10

9

8

7

6

5

4

3

2

1

0

-1

-2

-3

-4

-5

-6

-7

-8

-9

-10

-11

-12

-13

-14

-15

-16

-17

-18

-19

-20

-21

-22

-23

-24

-25

-26

-27

-28

-29

-30

-31

-32

-33

-34

-35

-36

-37

-38

-39

-40

-41

-42

-43

-44

-45

-46

-47

-48

-49

-50

-51

-52

-53

-54

-55

-56

-57

-58

-59

-60

-61

-62

-63

-64

-65

-66

-67

-68

-69

-70

-71

-72

-73

-74

-75

-76

-77

-78

-79

-80

-81

-82

-83

-84

-85

-86

-87

-88

-89

-90

-91

-92

-93

-94

-95

-96

-97

-98

-99

-100

-101

-102

-103

-104

-105

-106

-107

-108

-109

-110

-111

-112

-113

-114

-115

-116

-117

-118

-119

-120

-121

-122

-123

-124

-125

-126

-127

-128

-129

-130

-131

-132

-133

-134

-135

-136

-137

-138

-139

-140

-141

-142

-143

-144

-145

-146

-147

-148

-149

-150

-151

-152

-153

-154

-155

-156

-157

-158

-159

-160

-161

-162

-163

-164

-165

-166

-167

-168

-169

-170

-171

-172

-173

-174

-175

-176

-177

-178

-179

-180

-181

-182

-183

-184

-185

-186

-187

-188

-189

-190

-191

-192

-193

-194

-195

-196

-197

-198

-199

-200

-201

-202

-203

-204

-205

-206

-207

-208

-209

-210

-211

-212

-213

-214

-215

-216

-217

-218

-219

-220

-221

-222

-223

-224

-225

-226

-227

-228

-229

-230

-231

-232

-233

-234

-235

-236

-237

-238

-239

-240

-241

-242

-243

-244

-245

-246

-247

-248

-249

-250

-251

-252

-253

-254

-255

-256

-257

-258

-259

-260

-261

-262

-263

-264

-265

-266

-267

-268

-269

-270

-271

-272

-273

-274

-275

-276

-277

-278

-279

-280

-281

-282

-283

-284

-285

-286

-287

-288

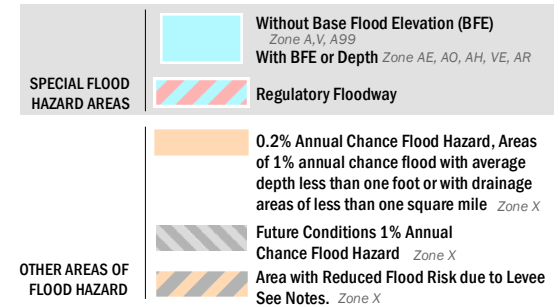
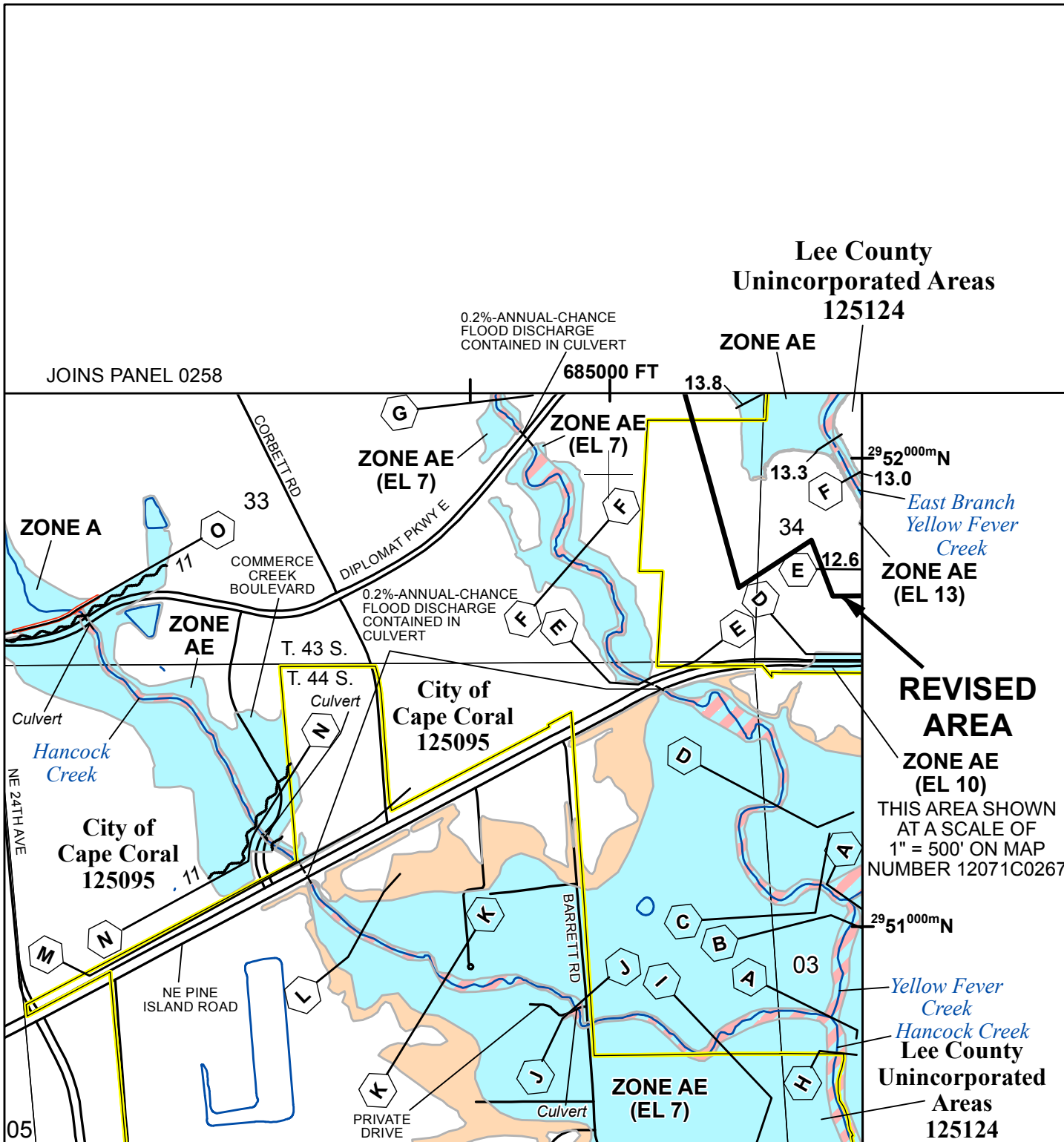
-289

-290

-291

-292





## SCALE

