

CARES Act

Coronavirus Relief Fund

Lee County  
Florida

# AGENDA

**OVERVIEW**

**INDIVIDUALS**

**BUSINESS**

**CHILDCARE**

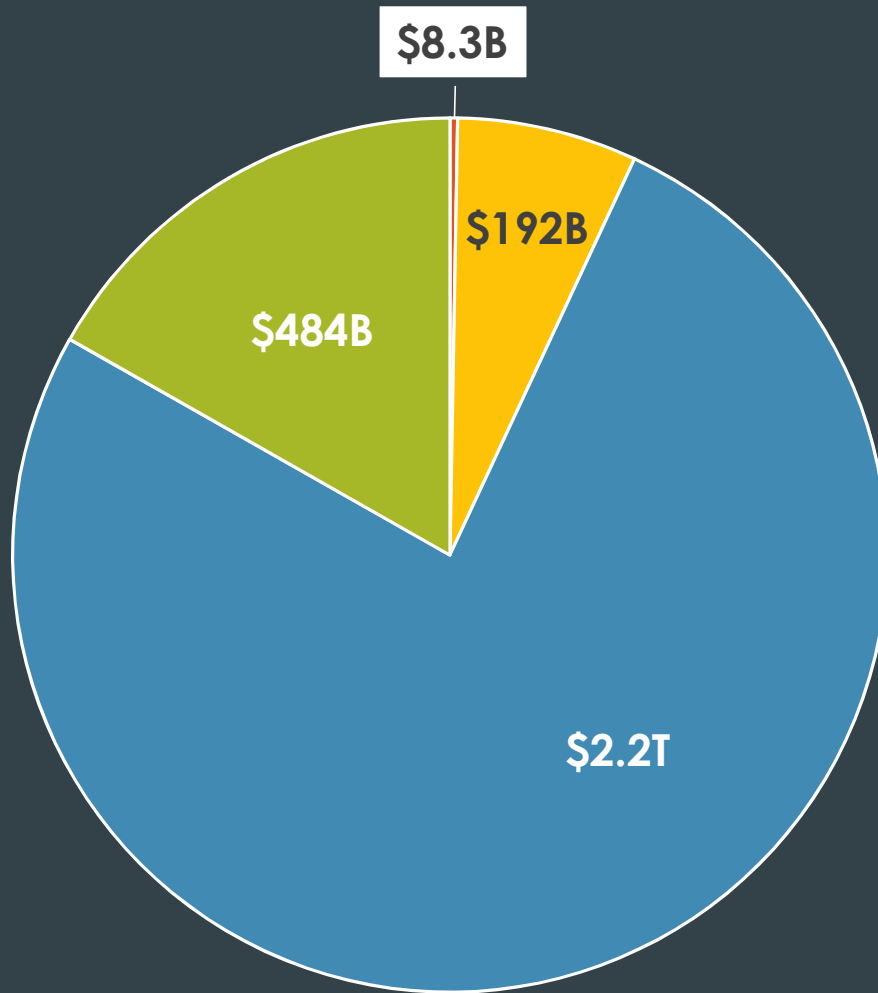
**FOOD SECURITY**

**IMPLEMENTATION**

**REPORTING**

# Coronavirus Legislation to Date

\$2.8 Trillion



Phase 1	Coronavirus Preparedness & Response Supplemental Appropriations Act
Phase 2	Families First Coronavirus Response Act
Phase 3	CARES Act
Phase 3.5	Paycheck Protection Program & Health Care Enhancement Act

## Phase 3 (H.R. 748, March 27) **CARES Act**



\$2.2 Trillion Aid Package Provides Financial Aid to Families, Governments & Businesses Impacted by COVID-19 Public Health Crisis:

- \$290 billion - Direct payments to eligible taxpayers
- \$260 billion - Expanded unemployment insurance
- **\$150 billion - State & local governments**
- \$510 billion - Expanded liquidity lending for businesses/local government
- \$377 billion - New loans & grants for small businesses
- \$127 billion - Hospitals for ventilators and other equipment





## Florida Funding **CARES Act**

### \$8.328 Billion for the State of Florida:

- \$4.6 Billion – Reserved to State
- \$3.7 Billion – Reserved for Local Governments
  - \$2.478 Billion – For Florida's 12 Direct Allocation Counties  
(population > 500,000)
  - Remaining jurisdictions sub-grantees of State



# CARES Act Direct Allocation: Lee County



LOCAL GOVERNMENT	ALLOCATION TO DATE	DETAILS
Lee County BoCC	\$134,459,744	Topic of discussion today
LeeTran	\$19,156,442	COVID-19 related operating costs, lost revenue, marketing, new safety measures barriers for drivers, farebox improvements (touchless)
Human Services	\$2,823,529	Local response related to COVID-19
Public Safety	\$710,922	Local response & care of patients with COVID-19
Lee County Port Authority	\$36,760,212	Eligible operational costs (payroll, utility bills or payment debt service) related to COVID-19
Lee County Sheriff's Office	\$325,489	Purchase & reimbursement for personal protection equipment (PPE) & cleaning / disinfecting supplies related to COVID-19 to protect first responders
<b>Total to Date:</b>	<b>\$194,236,338</b>	

# CARES Act Fund



## Eligible expenditures must be:

- Necessary & incurred due to COVID-19 public health emergency
- Not accounted for in budget most recently approved as of enactment date [3/27/20]
- Incurred during the period beginning 3/1/20 & ending 12/30/20



Inspector General of the U.S. Department of Treasury oversight



Funds not used by December 30, 2020 must be returned Treasury



Funds may NOT be used to fill shortfalls in government revenue

# Eligible Expenditures

## Medical Expenses

- Emergency medical response expenses

## Public Health Expenses

- Communication & enforcement; medical & protective supplies; disinfection

## Payroll Expenses for Public Safety and Public Health Services

- Employees whose job duties have changed to COVID-19 response

## Actions to Facilitate Compliance with Public Health Measures

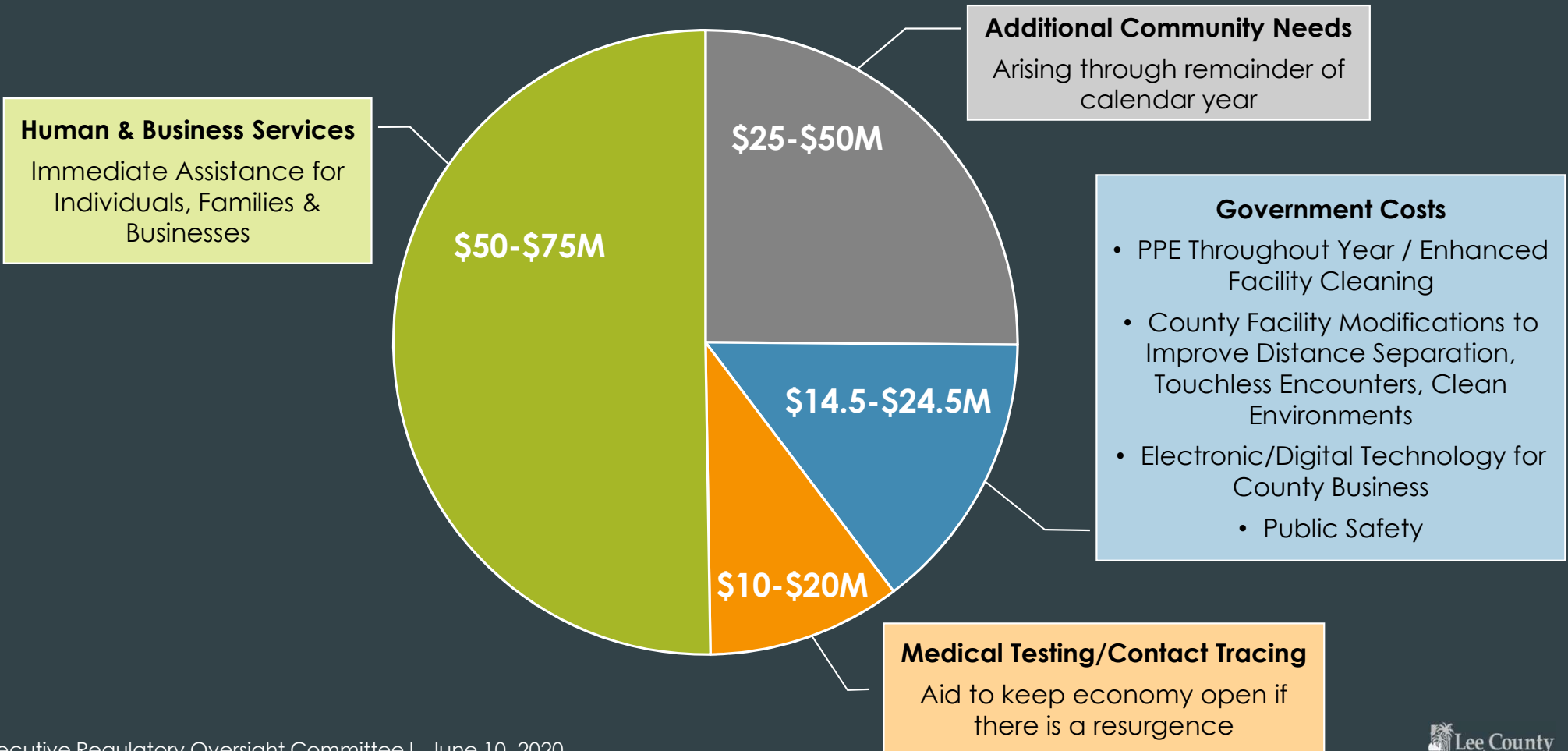
- Sanitation measures; food stability; unforeseen teleworking costs

## Provision of Economic Support

- Small business support programs; mortgage, rent and utility programs

# What Lee County Might Need to Fund?

(Direct & Indirect Expenses)



# Potential Costs

through December 30

Coronavirus  
Testing

Contact Tracing

Isolation &  
Quarantine  
Housing

Personal  
Protective  
Equipment

Data Collection,  
Analysis,  
Reporting

Economic  
Stabilization

Food & Nutrition

Elections

Housing Stability

Utility Assistance

Essential  
Government  
Services

General  
Reserves for  
Unmet Needs

Non-  
Congregate  
Hurricane  
Sheltering

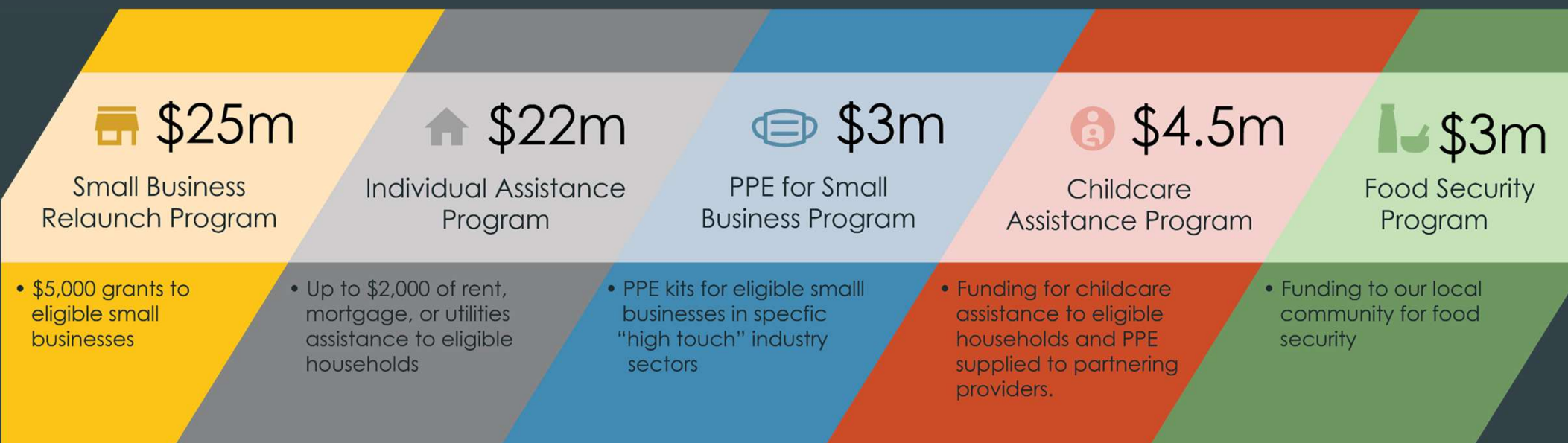
Public Education

Youth Services

Facility Safety  
Improvements



# LeeCares Programs – Phase 1



# Local Coronavirus Relief

# **INDIVIDUAL ASSISTANCE**



# Relief Available for Individuals

## Federal Coronavirus Stimulus Check

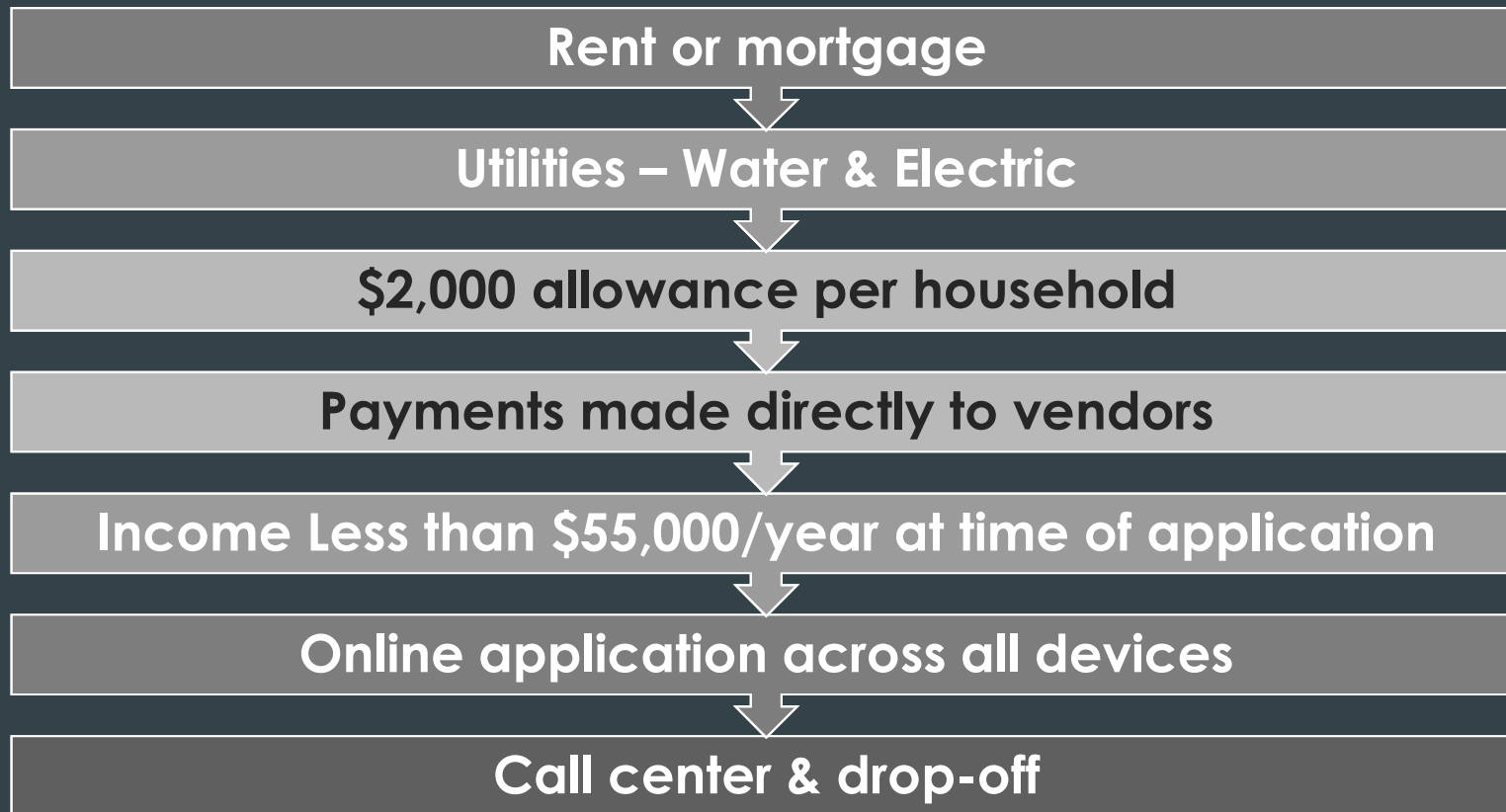
- \$1,200 per adult, \$500 per dependent
- *Income limitations apply*

## Federal Enhanced Re-employment

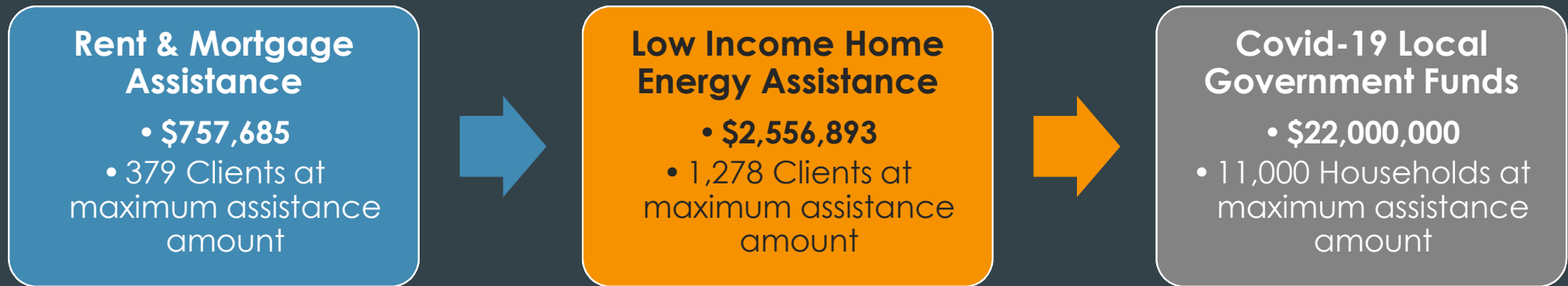
- Provides additional \$600 weekly benefit for individuals eligible for state Reemployment Assistance benefits



# Individual Assistance - \$22 Million



# Overall Program Funding: COVID-19 Rent, Mortgage & Utilities Proposal



- **Proposed Eligibility** – Households currently making less than \$55,000 per year
- **ALICE (Asset Limited, Income Constrained, Employed)** – \$52,140 for a family of four
- **\$2,000 Maximum Benefit**

# Local Coronavirus Relief

## **BUSINESS ASSISTANCE**

- PPE Supply
- Business Relaunch



Phases 3 (H.R. 748, March 27) and 3.5 (H.R. 266, April 24)  
**CARES Act and Paycheck Protection Program**



## **\$746 billion to Small Businesses**

- \$659 billion in Paycheck Protection Program

SBA will forgive loans of up to \$10 million if employees are kept on payroll and the money is used for payroll, rent, mortgage interest, or utilities

- \$87 billion Small businesses loans and grants

Economic Injury Disaster Loan provides loans of up to \$2 million

- \$30.2 billion loaned in FL; ~\$100 billion remaining in program



# Business Relaunch - \$25 Million



\$5,000 Grant

Eligible businesses  
Closed by Safer-at-  
Home Act

25 or Fewer Employees  
as of March 1, 2020

Use for Operating  
Expenses not Covered  
by Other Resources:

- COVID-19 Sanitation / PPE /  
Signage, Outdoor Seating,  
Marketing, Insurance, etc.

Online Application or  
by Appointment

Call Center

# PPE Supply - \$3.0 Million



**Masks**

**Hand Sanitizer**

**Online  
Application**

**Matchmaking  
for Local  
Buyers/Sellers**

**Gloves or  
Disinfectants**

**Specific  
Industry Sectors**

- High intensity personal contact
- Less than 25 employees

**Distribution**  
13180 S.  
Cleveland Ave  
(Elections Center)

# Local Coronavirus Relief

# **CHILDCARE ASSISTANCE**





# Childcare Support - \$4.5 Million

## Scholarships

- Vouchers to help offset childcare and summer camp expenses -- \$1,250 per child
  - United Way processes, approves and disperses vouchers
  - Applications available through childcare provider

## Personal Protective Equipment for Childcare/Camp Facilities

- Supplies: disinfectant, gloves, disposable masks, hand sanitizer
- Provide contracted, deep-cleaning services



# Food Security

## Food Banks

- Extraordinary Expenses Due to COVID-19
- Additional Food Purchases
- Temporary Help, Rental Costs, etc.



# Food Pantries

## Distribution

Receive  
supply  
from food  
banks

Distribute  
food to  
people in  
need

## Grants

\$5,000  
one-time  
grant

Defray  
operating  
expenses



# LEECARES Food Security

PROGRAM	ALLOCATION
Harry Chapin Food Bank	\$1,550,000
Midwest Food Bank	\$425,000
Community Cooperative	\$225,000
Food Pantries	\$500,000
Reserve	\$300,000
<b>FOOD SECURITY TOTAL</b>	<b>\$3,000,000</b>

Local Coronavirus Relief

# LEECARES IMPLEMENTATION



# High-level Readiness Tasks

Established Assistance Parameters & Eligibility Criteria

Created Program Applications

Selected Technology Platforms & Designed Workflows

Designated Workspaces & Fit Up With Technology

Identified & Assigned Staff Through Lee County E-role





# ONE ORGANIZATION

Library

Economic  
Development

LeeTran

Performance  
Management

Human Resources

County Attorney

Fleet

Parks & Recreation

VCB

County  
Administration

Public Safety

Procurement

Natural Resources

Human Services

Sports Development

Innovation &  
Technology

Fiscal Pool

Communications

Transportation

Additional  
Assistance:  
Clerk of Court,  
Supervisor of  
Elections



# On-going Tasks

## LeeCARES

Staff training  
and rotation

Web portal  
build-out

Create fiscal  
procedures as  
new programs  
emerge

Secure  
additional  
supplies

Configure  
physical work  
spaces

Execute  
Communications  
Plan

Evaluate additional community needs for future assistance phases





# Local Coronavirus Relief

## REPORTING



# Transparency and Oversight

Bi-monthly  
Presentations &  
Reports to Executive  
Regulatory Oversight  
Committee

Monthly Reports  
Posted to  
[www.leegov.com](http://www.leegov.com)

BoCC Regular  
Meeting Updates

# LeeCares Dashboard



LEECARES

updated 6/9/2020, 9:00:00 PM

**9,584**

applications received

**9,620**

calls received



Total Number of Calls Received Daily

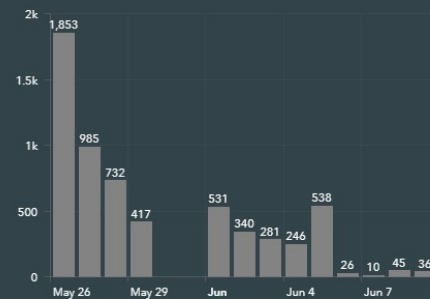
## Individual Assistance Program

**6,040**

applications received

**\$3,024,656**

assistance approved



Number of Applications Received Daily

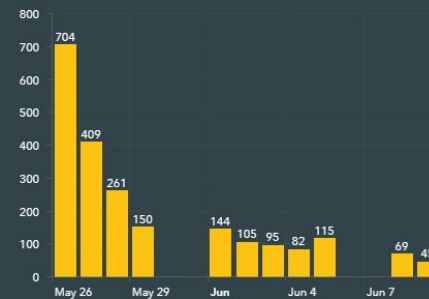
## Business Relaunch Program

**2,179**

applications received

**\$3,840,000**

assistance approved



Number of Applications Received Daily

## PPE Distribution Program

**1,365**

applications received

**1,121,754**

items distributed




Number of Applications Received Daily



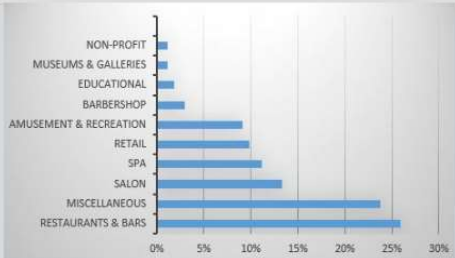
# Business Relaunch Map

## Lee Cares Small Business Relaunch Grant

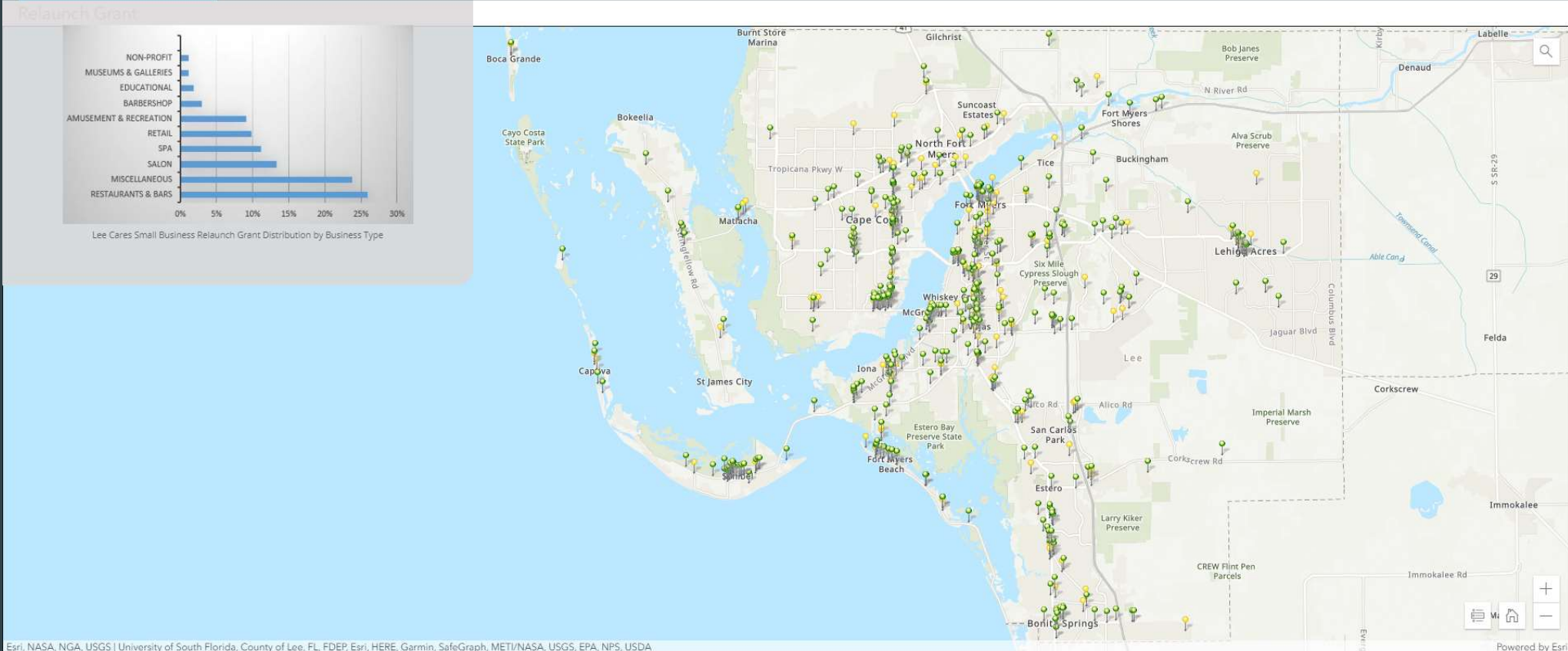
Lee County Economic Development  

### Small Business Grant Distribution

#### Relaunch Grant



Lee Cares Small Business Relaunch Grant Distribution by Business Type



Esri, NASA, NGA, USGS | University of South Florida, County of Lee, FL, FDEP, Esri, HERE, Garmin, SafeGraph, METI/NASA, USGS, EPA, NPS, USDA

Powered by Esri

# PPE Distribution

Surgical Masks	441,800
KN95 Masks	7,300
Disinfectant	1,347
Gloves	746,700
Sanitizer 10 oz.	868
Sanitizer 19 oz.	2,656
Sanitizer 64 oz.	220
Sanitizer 1 gal.	2,656
Total Items Distributed	1,203,768
Cost – to – Date	\$1,644,073



# Childcare Support

## Scholarships

- 57 provider locations
  - United Way is adding more providers daily
  - 220 scholarships approved

## Personal Protective Equipment for Childcare/Camp Facilities

- Distributions ongoing – next delivery date is 6/12
- 29 sites approved for periodic cleaning, more coming



# Government Expenditures

**\$2,557,947**

Through June 8, 2020

Public Safety (EOC, ME, PPE)	\$2,003,740
Facilities	\$289,305
Telework	\$264,902

## Nonexclusive Examples of Eligible Expenditures

Emergency  
Medical Services  
Response

Personal  
Protective  
Equipment

Public Facility  
Disinfection

Public Safety  
Response  
Measures

Non-budgeted  
Payroll Expenses

Telework  
Capabilities

Facility Safety  
Modifications

Public Education  
/Messaging

# Potential Costs

through December 30

Coronavirus  
Testing

Contact Tracing

Isolation &  
Quarantine  
Housing

Personal  
Protective  
Equipment

Data Collection,  
Analysis,  
Reporting

Economic  
Stabilization

Food & Nutrition

Elections

Housing Stability

Utility Assistance

Essential  
Government  
Services

General  
Reserves for  
Unmet Needs

Non-  
Congregate  
Hurricane  
Sheltering

Public Education

Youth Services

Facility Safety  
Improvements





# July EROC Meeting Suggestions



**Formal Expenditure Reports**



**Monthly Website Report Format**



**Additional Dashboard Tools**



**Committee Recommendations for Data Collection,  
Analysis & Sharing**

